

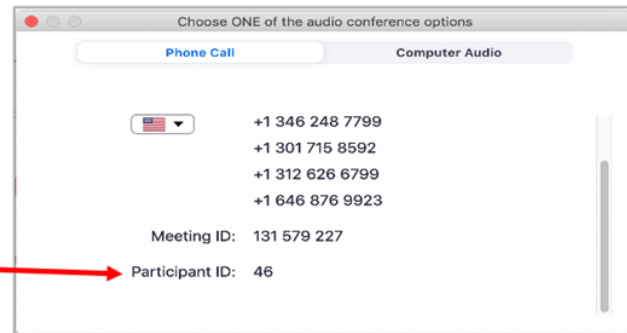
# Franklin Pierce Boundary Review Committee Meeting #7

## Welcome! Please Test Your Zoom Functions

4. Make sure your name appears in your participant video square.

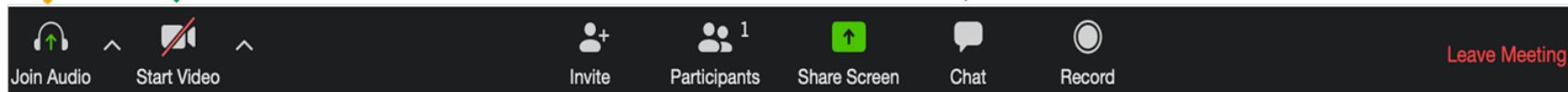
1. Please connect via computer for audio.

If you must connect via phone for audio, ensure your video and audio are linked using the Participant ID pin.



2. Please turn on your video.

3. Do you have any exciting travel plans for this summer? – type it into the **chat box**.



# Franklin Pierce Boundary Review Committee Meeting #7

- This session is being recorded for record-keeping purposes. By participating in this session, you are consenting to the recording, retention, and use of this session.
- At any time if you have a question or comment, feel free to place that in the chat, and we will respond to you as soon as possible. If you ask a question or comment verbally, please note that by doing so, you are consenting to the recording, retention, and use of your statements recorded as part of this session.
- Conversations in breakout groups will not be recorded.

# Welcome to the final meeting!

The logo for Franklin Pierce Schools, featuring the text "FRANKLIN PIERCE SCHOOLS" in white, bold, sans-serif capital letters, stacked vertically within a red rectangular background.

**FRANKLIN  
PIERCE  
SCHOOLS**

**Boundary Review Committee  
Meeting 7  
June 22<sup>nd</sup>, 2021**

# Committee Meeting #7 Intentions & Agenda



## Intentions

1. Participants review and understand Open House 2 feedback
2. Participants engage in scenario modeling
3. Participants develop final boundary recommendation utilizing community feedback
4. Participants develop transition recommendations to accompany their boundary recommendation to the Superintendent

## Agenda

- Review charge and guiding principles
- Review Open House 2 scenario and feedback
- Group discussion and workshop
- Propose final changes and vote
- Discuss transition recommendations
- **Recommendation compiled for Superintendent**

# WHAT is a Boundary Review?

A multi-month, highly structured approach to data analysis & stakeholder engagement that will result in informed, relevant plans for Franklin Pierce School District

Board  
Recommendation  
July 6<sup>th</sup> at 12pm

We are  
here.

## Step 1: Initiation

- Kick-off meeting
- Enrollment forecast review and integration
- Community surveys begin
- Community announcement

December 2020 – January 2021

## Step 2: Assessment

- Community surveys completed
- Guiding Principles finalized
- Springboard finalized
- District data and preparation meetings

January 2021-February 2021

## Step 3: Committee Process

- Committee Process (7 committee meetings)
- Open Houses (2 open houses)
- Community engagement materials

March 2021 – June 2021

## Step 4: Recommendation

- Recommendation from Committee
- Superintendent to vet recommendation
- Final recommendation to Board

July 2021 – August 2021

## Completed meetings:

- Meeting 1 -> April 1<sup>st</sup> ✓
- Meeting 2 -> April 15<sup>th</sup> ✓
- Meeting 3 -> April 22<sup>nd</sup> ✓
- Meeting 4 -> April 29<sup>th</sup> ✓

## Upcoming meetings:

- Open house 1 -> May 6<sup>th</sup> ✓
- Meeting 5 -> May 20<sup>th</sup> ✓
- Meeting 6 -> May 27<sup>th</sup> ✓
- Open house 2 -> June 10<sup>th</sup> ✓
- Meeting 7 (final) -> YOU MADE IT!!!



# Charge & Guiding Principles

6

## Truncated Guiding Principles:

- District-wide perspective to balance enrollment now and in the future
- Minimize disruption to special programs or populations
- Work to maintain feeder system
- Consider transportation impacts
- Maximize proximity to home/walkability
- Consider racial equity lens



## The Boundary Review Committee is charged with:

Working to identify, refine and review proposed updates to school attendance area boundaries to support long-term balanced enrollment and facility capacity. The committee will engage with the public during open houses in the spring to receive feedback on their boundary options. The committee will provide a recommendation to the Superintendent during the last committee meeting (summer, 2021). The Superintendent will evaluate the Committee's recommendation and bring a proposal forward to the Franklin Pierce School District Board of Directors. Committee members may be asked to participate in the Board Meeting.

# Open Houses 1 and 2 Stats

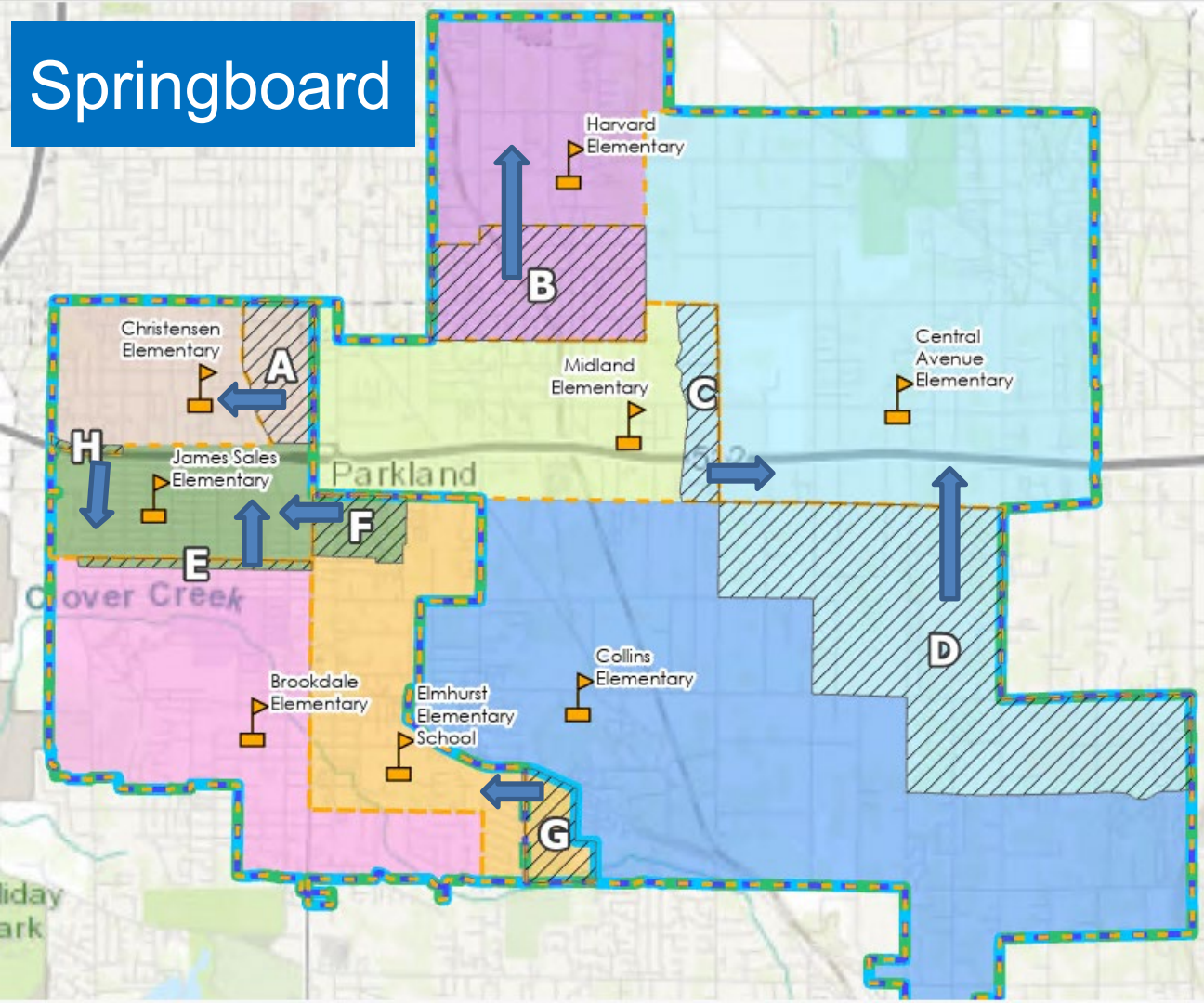
Statistics	Open House 1	Open House 2
Date	5/6/2021	6/10/2021
Number of sessions	3	2
Community members in attendance	28	11
Number of feedback responses	32	28
Webmap views (1 week period)	1,340	1,140
Open house video views (1 week period)	264	315
Open house video views (over 5 min)	63	48

- ❑ Lots of feedback on change area 8 - not popular with the community
- ❑ A couple of actionable items to run scenarios on

**GROUP** • 1-2 main themes from feedback form  
**DISCUSSION:** • Any action items to model?



# Springboard



Under the Springboard Option -  
Change Areas:

- A. Adjusted from James Sales to Christensen
- B. Adjusted from Midland to Harvard
- C. Adjusted from Midland to Central Avenue
- D. Adjusted from Collins to Central Avenue
- E. Adjusted from Brookdale to James Sales
- F. Adjusted from Elmhurst to James Sales
- G. Adjusted from Collins to Elmhurst (MS/HS change as well but no students currently live in this area)
- H. Adjusted from Christensen to James Sales



# Springboard Option Map Statistics

## Enrollment and Forecasted Enrollment

### Attendance Area

### Existing

### Springboard Option

School Name	Total Capacity	2019 Count	2019 + / -	2019 % Capacity	2024 Forecast	2024 + / -	2024 % Capacity	2029 Forecast	2029 + / -	2029 % Capacity	2019 Count	2019 + / -	2019 % Capacity	2024 Forecast	2024 + / -	2024 % Capacity	2029 Forecast	2029 + / -	2029 % Capacity
Central Avenue ES	513	439	-74	86%	409	-104	80%	427	-86	83%	482	-31	94%	455	-58	89%	475	-38	93%
Collins ES	513	516	3	101%	535	22	104%	591	78	115%	402	-111	78%	412	-101	80%	459	-54	89%
Harvard ES	513	400	-113	78%	342	-171	67%	358	-155	70%	497	-16	97%	431	-82	84%	453	-60	88%
Midland ES	519	514	-5	99%	475	-44	92%	513	-6	99%	470	-49	91%	434	-85	84%	473	-46	91%
Brookdale ES	513	502	-11	98%	417	-96	81%	427	-86	83%	474	-39	92%	393	-120	77%	403	-110	79%
Christensen ES	475	447	-28	94%	378	-97	80%	386	-89	81%	490	15	103%	416	-59	88%	427	-48	90%
Elmhurst ES	466	392	-74	84%	355	-111	76%	363	-103	78%	367	-99	79%	347	-119	75%	357	-109	77%
James Sales ES	513	409	-104	80%	355	-158	69%	357	-156	70%	435	-78	85%	377	-136	74%	376	-137	73%
Morris Ford MS	1,095	1,038	-57	95%	950	-145	87%	989	-106	90%	1,025	-70	94%	933	-162	85%	970	-125	89%
Perry G Keithley MS	1,025	901	-124	88%	774	-251	75%	734	-291	72%	914	-111	89%	791	-234	77%	754	-271	74%
Franklin Pierce HS	1,689	1,148	-541	68%	1,237	-452	73%	1,292	-397	76%	1,133	-556	67%	1,214	-475	72%	1,270	-419	75%
Washington HS	1,530	971	-559	63%	954	-576	62%	913	-617	60%	986	-544	64%	977	-553	64%	934	-596	61%

Existing Boundaries  
2019 Enrollment

Existing Boundaries  
Forecasted Enrollment

Scenario Boundaries  
2019 Enrollment

Scenario Boundaries  
Forecasted Enrollment

# Springboard Option Map Statistics

## Socioeconomic Indicators

Based on 2019 enrollment ONLY, NOT FORECASTED

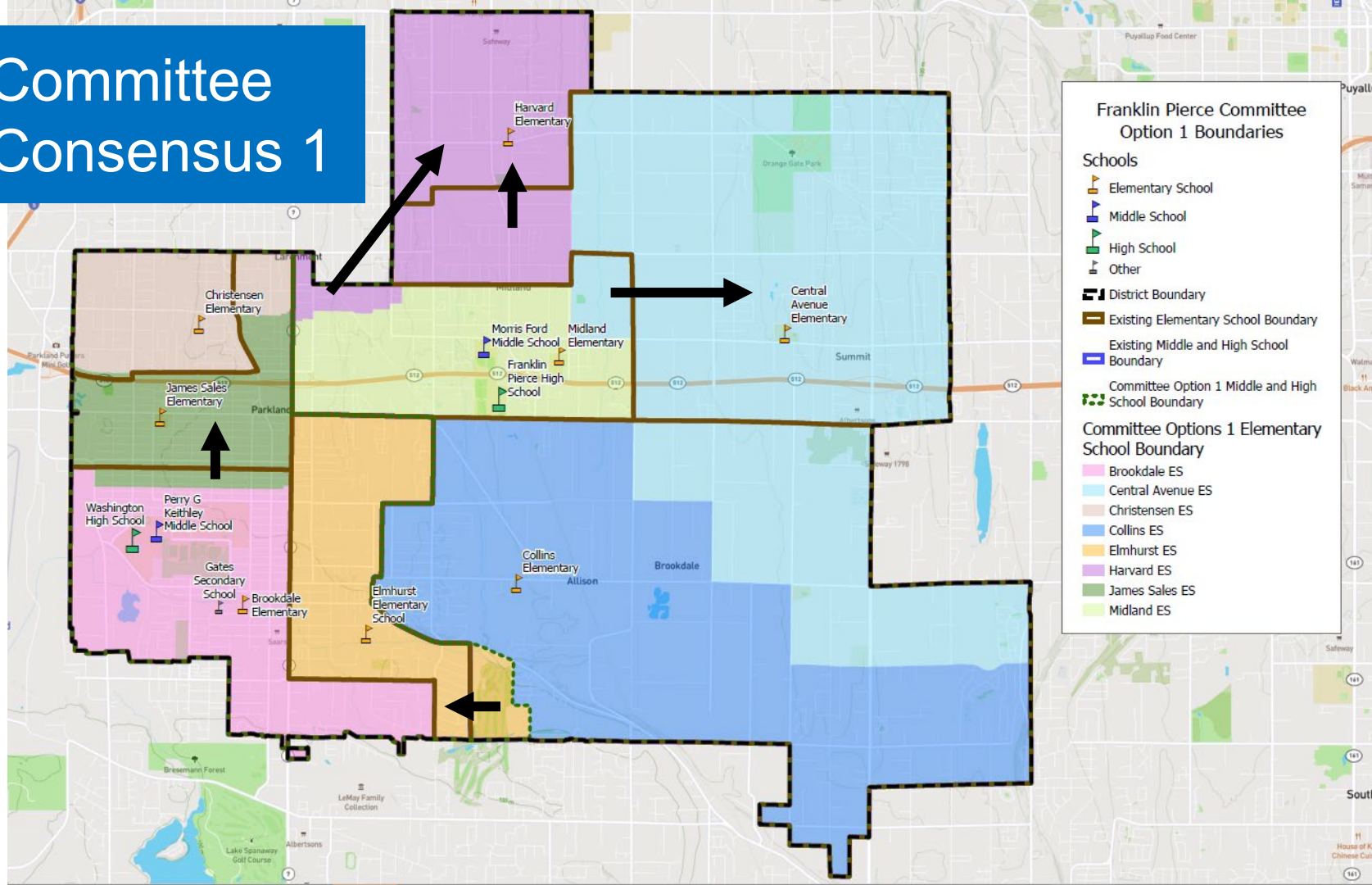
### SES

### Existing

### Springboard Option

Grade Group	Attendance Area (School Boundary)	% Special Education	% Racial Diversity	% LEP	% LAP	% McKinney-Vento	% SPED	% Racial Diversity	% LEP	% LAP	% McKinney-Vento
ES	Central Avenue ES	11.1%	50.1%	11.1%	17.6%	1.1%	12.0%	49.2%	7.4%	16.3%	1.2%
ES	Collins ES	12.2%	59.1%	10.6%	20.7%	2.8%	11.8%	60.4%	11.1%	21.2%	3.0%
ES	Harvard ES	13.9%	83.7%	37.7%	30.6%	6.2%	13.3%	78.7%	33.0%	29.2%	5.0%
ES	Midland ES	15.0%	72.6%	13.8%	20.0%	4.1%	15.2%	73.9%	15.5%	20.1%	4.6%
ES	Brookdale ES	11.6%	70.9%	12.8%	23.7%	6.4%	10.7%	72.7%	13.5%	24.0%	6.6%
ES	Christensen ES	15.1%	76.1%	14.6%	14.9%	4.9%	13.8%	75.8%	15.5%	16.4%	4.4%
ES	Elmhurst ES	10.9%	70.1%	12.4%	18.7%	3.3%	12.0%	66.8%	12.0%	18.4%	3.5%
ES	James Sales ES	12.3%	71.9%	14.1%	25.9%	4.3%	13.3%	72.0%	12.4%	24.5%	4.4%
MS	Morris Ford MS	9.3%	69.0%	7.6%	17.8%	4.5%	9.3%	69.0%	7.6%	17.8%	4.5%
MS	Perry G Keithley MS	13.8%	70.0%	7.7%	18.6%	4.5%	13.8%	70.0%	7.7%	18.6%	4.5%
HS	Franklin Pierce HS	10.0%	62.3%	7.7%	1.4%	4.5%	10.0%	62.3%	7.7%	1.4%	4.5%
HS	Washington HS	14.6%	69.0%	5.9%	5.7%	6.9%	14.6%	69.0%	5.9%	5.7%	6.9%

# Committee Consensus 1



# Committee Consensus Scenario 1 Map Statistics

## Enrollment and Forecasted Enrollment

### Attendance Area

### Existing

### Committee Option 1

School Name	Total Capacity	2019 Count	2019 +/-	2019 % Capacity	2024 Forecast	2024 +/-	2024 % Capacity	2029 Forecast	2029 +/-	2029 % Capacity	2019 Count	2019 +/-	2019 % Capacity	2024 Forecast	2024 +/-	2024 % Capacity	2029 Forecast	2029 +/-	2029 % Capacity
Central Avenue ES	513	439	-74	86%	409	-104	80%	427	-86	83%	447	-66	87%	423	-90	82%	442	-71	86%
Collins ES	513	516	3	101%	535	22	104%	591	78	115%	403	-110	78%	412	-101	80%	459	-54	89%
Harvard ES	513	400	-113	78%	342	-171	67%	358	-155	70%	534	21	104%	462	-51	90%	486	-27	95%
Midland ES	519	514	-5	99%	475	-44	92%	513	-6	99%	470	-49	91%	438	-81	84%	474	-45	91%
Brookdale ES	513	502	-11	98%	417	-96	81%	427	-86	83%	435	-78	85%	363	-150	71%	373	-140	73%
Christensen ES	475	447	-28	94%	378	-97	80%	386	-89	81%	456	-19	96%	395	-80	83%	405	-70	85%
Elmhurst ES	466	392	-74	84%	355	-111	76%	363	-103	78%	409	-57	88%	383	-83	82%	393	-73	84%
James Sales ES	513	409	-104	80%	355	-158	69%	357	-156	70%	466	-47	91%	390	-123	76%	391	-122	76%
Morris Ford MS	1,095	1,038	-57	95%	950	-145	87%	989	-106	90%	1,002	-93	91%	915	-180	84%	953	-142	87%
Perry G Keithley MS	1,025	901	-124	88%	774	-251	75%	734	-291	72%	937	-88	91%	808	-217	79%	771	-254	75%
Franklin Pierce HS	1,689	1,148	-541	68%	1,237	-452	73%	1,292	-397	76%	1,116	-573	66%	1,192	-497	71%	1,248	-441	74%
Washington HS	1,530	971	-559	63%	954	-576	62%	913	-617	60%	1,003	-527	66%	999	-531	65%	956	-574	62%

Existing Boundaries  
2019 Enrollment

Existing Boundaries  
Forecasted Enrollment

Scenario Boundaries  
2019 Enrollment

Scenario Boundaries  
Forecasted Enrollment

# Committee Consensus Scenario 1 Map Statistics

## Socioeconomic Indicators

Based on 2019 enrollment ONLY, NOT FORECASTED

**SES**

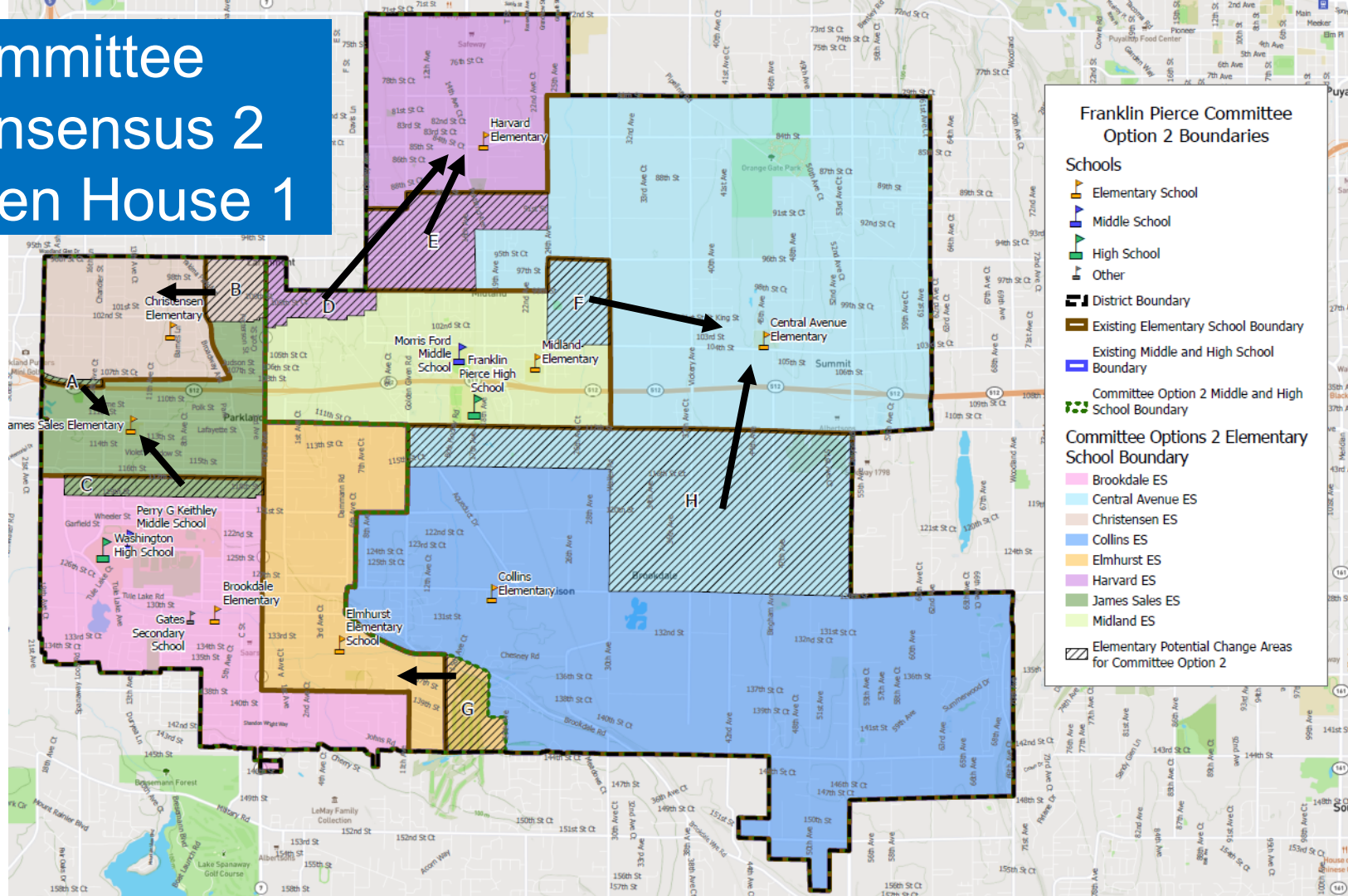
**Existing**

**Committee Option 1**

Grade Group	Attendance Area (School Boundary)	% Special Education	% Racial Diversity	% LEP	% LAP	% McKinney-Vento	%SPED	% Racial Diversity	% LEP	% LAP	% McKinney-Vento
ES	Central Avenue ES	11.1%	50.1%	11.1%	17.6%	1.1%	11.7%	47.3%	8.2%	16.0%	1.3%
ES	Collins ES	12.2%	59.1%	10.6%	20.7%	2.8%	11.8%	60.4%	11.1%	21.2%	3.0%
ES	Harvard ES	13.9%	83.7%	37.7%	30.6%	6.2%	14.7%	78.3%	31.7%	28.4%	4.8%
ES	Midland ES	15.0%	72.6%	13.8%	20.0%	4.1%	13.7%	73.1%	13.7%	20.1%	4.3%
ES	Brookdale ES	11.6%	70.9%	12.8%	23.7%	6.4%	10.4%	72.0%	13.3%	24.2%	6.1%
ES	Christensen ES	15.1%	76.1%	14.6%	14.9%	4.9%	14.3%	76.7%	15.0%	15.7%	4.5%
ES	Elmhurst ES	10.9%	70.1%	12.4%	18.7%	3.3%	10.9%	70.1%	12.4%	18.7%	3.3%
ES	James Sales ES	12.3%	71.9%	14.1%	25.9%	4.3%	13.9%	70.1%	13.2%	24.7%	5.2%
MS	Morris Ford MS	9.3%	69.0%	7.6%	17.8%	4.5%	9.6%	68.4%	7.8%	17.9%	4.6%
MS	Perry G Keithley MS	13.8%	70.0%	7.7%	18.6%	4.5%	13.4%	70.5%	7.5%	18.4%	4.3%
HS	Franklin Pierce HS	10.0%	62.3%	7.7%	1.4%	4.5%	10.1%	62.1%	7.8%	1.4%	4.2%
HS	Washington HS	14.6%	69.0%	5.9%	5.7%	6.9%	14.4%	69.0%	5.9%	5.7%	7.2%



# Committee Consensus 2 Open House 1





# Committee Consensus Scenario 2 Map Statistics

## Enrollment and Forecasted Enrollment

### Attendance Area

### Existing

### Committee Option 2

School Name	Total Capacity	2019 Count	2019 +/-	2019 % Capacity	2024 Forecast	2024 +/-	2024 % Capacity	2029 Forecast	2029 +/-	2029 % Capacity	2019 Count	2019 +/-	2019 % Capacity	2024 Forecast	2024 +/-	2024 % Capacity	2029 Forecast	2029 +/-	2029 % Capacity
Central Avenue ES	513	439	-74	86%	409	-104	80%	427	-86	83%	456	-57	89%	449	-64	87%	465	-48	91%
Collins ES	513	516	3	101%	535	22	104%	591	78	115%	414	-99	81%	406	-107	79%	458	-55	89%
Harvard ES	513	400	-113	78%	342	-171	67%	358	-155	70%	512	-1	100%	442	-71	86%	464	-49	90%
Midland ES	519	514	-5	99%	475	-44	92%	513	-6	99%	471	-48	91%	438	-81	84%	474	-45	91%
Brookdale ES	513	502	-11	98%	417	-96	81%	427	-86	83%	436	-77	85%	363	-150	71%	373	-140	73%
Christensen ES	475	447	-28	94%	378	-97	80%	386	-89	81%	456	-19	96%	395	-80	83%	405	-70	85%
Elmhurst ES	466	392	-74	84%	355	-111	76%	363	-103	78%	409	-57	88%	383	-83	82%	394	-72	84%
James Sales ES	513	409	-104	80%	355	-158	69%	357	-156	70%	466	-47	91%	390	-123	76%	391	-122	76%
Morris Ford MS	1,095	1,038	-57	95%	950	-145	87%	989	-106	90%	1,025	-70	94%	933	-162	85%	970	-125	89%
Perry G Keithley MS	1,025	901	-124	88%	774	-251	75%	734	-291	72%	914	-111	89%	791	-234	77%	754	-271	74%
Franklin Pierce HS	1,689	1,148	-541	68%	1,237	-452	73%	1,292	-397	76%	1,133	-556	67%	1,222	-467	72%	1,277	-412	76%
Washington HS	1,530	971	-559	63%	954	-576	62%	913	-617	60%	986	-544	64%	969	-561	63%	928	-602	61%

Existing Boundaries  
2019 Enrollment

Existing Boundaries  
Forecasted Enrollment

Scenario Boundaries  
2019 Enrollment

Scenario Boundaries  
Forecasted Enrollment

# Committee Consensus Scenario 2 Map Statistics

## Socioeconomic Indicators

Based on 2019 enrollment ONLY, NOT FORECASTED

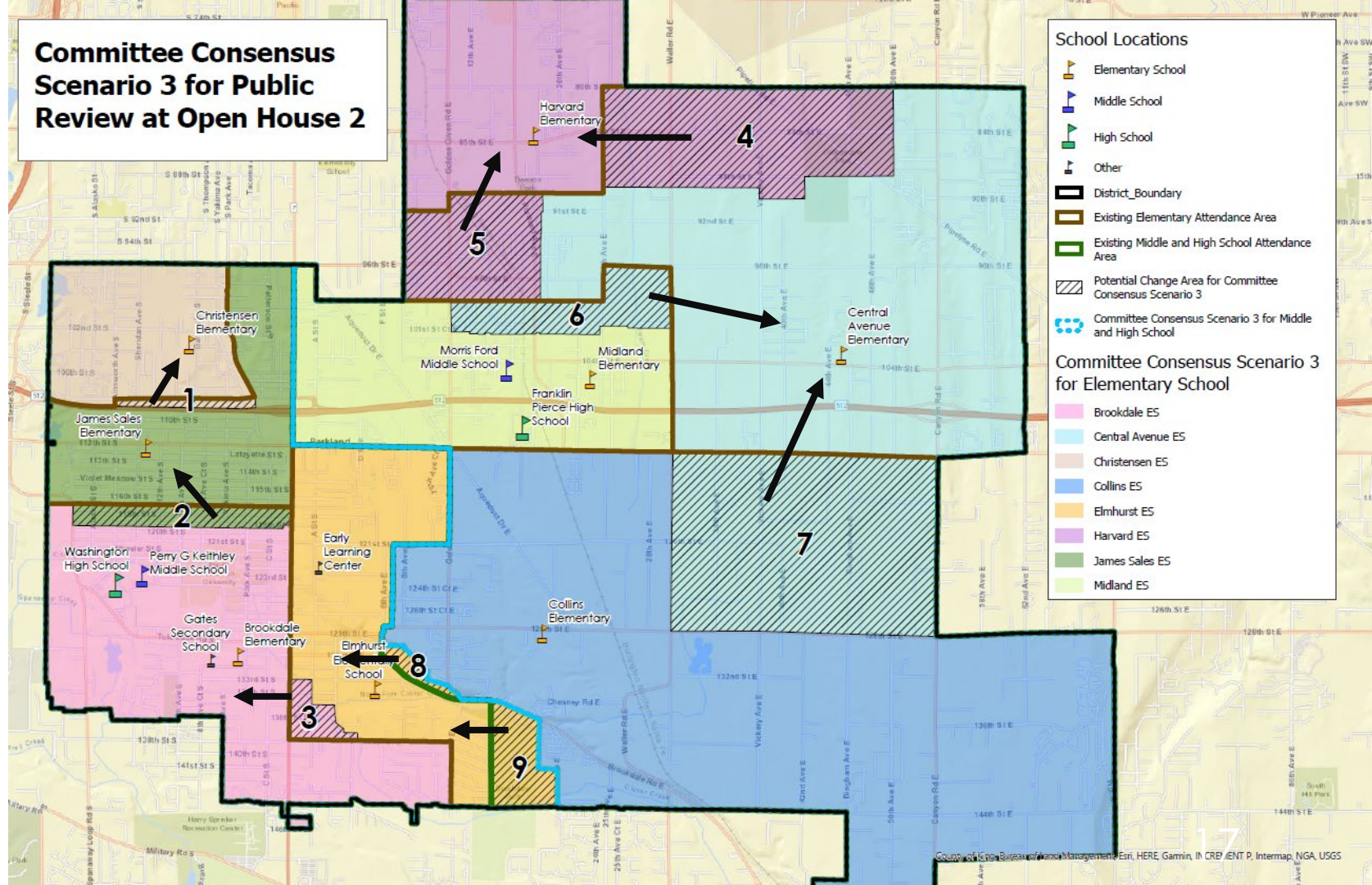
**SES**

**Existing**

**Committee Option 2**

Grade Group	Attendance Area (School Boundary)	% Special Education	% Racial Diversity	% LEP	% LAP	% McKinney-Vento	% SPED	% Racial Diversity	% LEP	% LAP	% McKinney-Vento
ES	Central Avenue ES	11.1%	50.1%	11.1%	17.6%	1.1%	12.1%	52.3%	11.1%	18.6%	2.1%
ES	Collins ES	12.2%	59.1%	10.6%	20.7%	2.8%	11.7%	57.4%	9.2%	20.0%	2.2%
ES	Harvard ES	13.9%	83.7%	37.7%	30.6%	6.2%	14.6%	78.2%	32.2%	27.9%	5.0%
ES	Midland ES	15.0%	72.6%	13.8%	20.0%	4.1%	13.7%	73.1%	13.7%	20.1%	4.3%
ES	Brookdale ES	11.6%	70.9%	12.8%	23.7%	6.4%	10.4%	72.0%	13.3%	24.2%	6.1%
ES	Christensen ES	15.1%	76.1%	14.6%	14.9%	4.9%	14.3%	76.7%	15.0%	15.7%	4.5%
ES	Elmhurst ES	10.9%	70.1%	12.4%	18.7%	3.3%	10.9%	70.1%	12.4%	18.7%	3.3%
ES	James Sales ES	12.3%	71.9%	14.1%	25.9%	4.3%	13.9%	70.1%	13.2%	24.7%	5.2%
MS	Morris Ford MS	9.3%	69.0%	7.6%	17.8%	4.5%	9.3%	69.0%	7.6%	17.8%	4.5%
MS	Perry G Keithley MS	13.8%	70.0%	7.7%	18.6%	4.5%	13.8%	70.0%	7.7%	18.6%	4.5%
HS	Franklin Pierce HS	10.0%	62.3%	7.7%	1.4%	4.5%	10.0%	62.3%	7.7%	1.4%	4.5%
HS	Washington HS	14.6%	69.0%	5.9%	5.7%	6.9%	14.6%	69.0%	5.9%	5.7%	6.9%

# Committee Consensus Scenario 3 for Public Review at Open House 2



# Committee Consensus Scenario 3 Map Statistics

## Enrollment and Forecasted Enrollment

### Attendance Area

### Existing

### Committee Consensus Scenario 3

School Name	Total Capacity	2019 Count	2019 +/-	2019 % Capacity	2024 Forecast	2024 +/-	2024 % Capacity	2029 Forecast	2029 +/-	2029 % Capacity	2019 Count	2019 +/-	2019 % Capacity	2024 Forecast	2024 +/-	2024 % Capacity	2029 Forecast	2029 +/-	2029 % Capacity
Central Avenue ES	513	439	-74	86%	409	-104	80%	427	-86	83%	448	-65	87%	433	-80	85%	452	-61	88%
Collins ES	513	516	3	101%	535	22	104%	591	78	115%	434	-79	85%	426	-87	83%	480	-33	94%
Harvard ES	513	400	-113	78%	342	-171	67%	358	-155	70%	498	-15	97%	433	-80	84%	453	-60	88%
Midland ES	519	514	-5	99%	475	-44	92%	513	-6	99%	459	-60	88%	417	-102	80%	451	-68	87%
Brookdale ES	513	502	-11	98%	417	-96	81%	427	-86	83%	449	-64	88%	377	-136	73%	387	-126	75%
Christensen ES	475	447	-28	94%	378	-97	80%	386	-89	81%	464	-11	98%	392	-83	83%	401	-74	84%
Elmhurst ES	466	392	-74	84%	355	-111	76%	363	-103	78%	408	-58	87%	393	-73	84%	405	-61	87%
James Sales ES	513	409	-104	80%	355	-158	69%	357	-156	70%	459	-54	89%	393	-120	77%	394	-119	77%
Morris Ford MS	1,095	1,038	-57	95%	950	-145	87%	989	-106	90%	1,012	-83	92%	918	-177	84%	957	-138	87%
Perry G Keithley MS	1,025	901	-124	88%	774	-251	75%	734	-291	72%	927	-98	90%	805	-220	79%	767	-258	75%
Franklin Pierce HS	1,689	1,148	-541	68%	1,237	-452	73%	1,292	-397	76%	1,123	-566	66%	1,197	-492	71%	1,253	-436	74%
Washington HS	1,530	971	-559	63%	954	-576	62%	913	-617	60%	996	-534	65%	994	-536	65%	952	-578	62%

Existing Boundaries  
2019 Enrollment

Existing Boundaries  
Forecasted Enrollment

Scenario Boundaries  
2019 Enrollment

Scenario Boundaries  
Forecasted Enrollment



# Committee Consensus Scenario 3 Map Statistics

## Socioeconomic Indicators

Based on 2019 enrollment ONLY, NOT FORECASTED

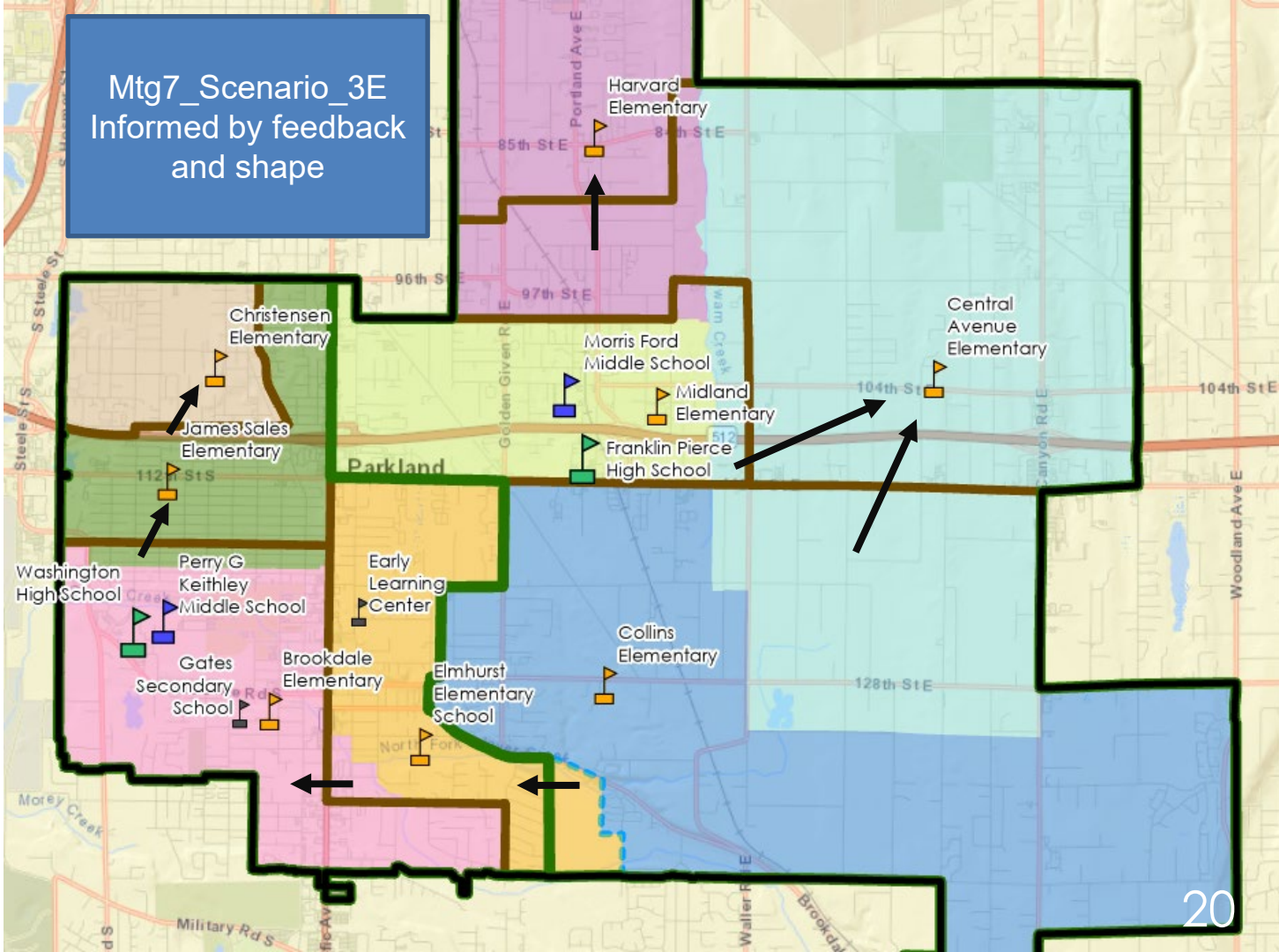
**SES**

**Existing**

**Committee Consensus Scenario 3**

Grade Group	Attendance Area (School Boundary)	% Special Education	% Racial Diversity	% LEP	% LAP	% McKinney-Vento	%SPED	% Racial Diversity	% LEP	% LAP	% McKinney-Vento
ES	Central Avenue ES	11.1%	50.1%	11.1%	17.6%	1.1%	12.7%	52.1%	8.5%	17.2%	2.9%
ES	Collins ES	12.2%	59.1%	10.6%	20.7%	2.8%	11.5%	59.2%	11.7%	20.8%	2.3%
ES	Harvard ES	13.9%	83.7%	37.7%	30.6%	6.2%	12.8%	78.0%	33.7%	28.1%	4.9%
ES	Midland ES	15.0%	72.6%	13.8%	20.0%	4.1%	15.5%	71.8%	12.9%	20.5%	3.7%
ES	Brookdale ES	11.6%	70.9%	12.8%	23.7%	6.4%	10.2%	72.2%	12.9%	23.7%	6.1%
ES	Christensen ES	15.1%	76.1%	14.6%	14.9%	4.9%	15.2%	75.8%	14.9%	15.2%	4.7%
ES	Elmhurst ES	10.9%	70.1%	12.4%	18.7%	3.3%	11.3%	70.1%	12.2%	18.9%	3.0%
ES	James Sales ES	12.3%	71.9%	14.1%	25.9%	4.3%	13.0%	70.9%	13.2%	25.3%	5.1%
MS	Morris Ford MS	9.3%	69.0%	7.6%	17.8%	4.5%	9.5%	68.7%	7.7%	17.9%	4.6%
MS	Perry G Keithley MS	13.8%	70.0%	7.7%	18.6%	4.5%	13.6%	70.2%	7.6%	18.5%	4.4%
HS	Franklin Pierce HS	10.0%	62.3%	7.7%	1.4%	4.5%	10.0%	62.1%	7.7%	1.5%	4.4%
HS	Washington HS	14.6%	69.0%	5.9%	5.7%	6.9%	14.5%	69.1%	6.0%	5.7%	7.0%

Mtg7\_Scenario\_3E  
Informed by feedback  
and shape





# Mtg7\_Scenario\_3E Map Statistics

## Enrollment and Forecasted Enrollment

### Attendance Area

### Baseline

### Mtg7\_Scenario\_3E

School Name	Total Capacity	2019 Count	2019 +/-	2019 % Capacity	2024 Forecast	2024 +/-	2024 % Capacity	2029 Forecast	2029 +/-	2029 % Capacity	2019 Count	2019 +/-	2019 % Capacity	2024 Forecast	2024 +/-	2024 % Capacity	2029 Forecast	2029 +/-	2029 % Capacity
Central Avenue ES	513	439	-74	86%	409	-104	80%	427	-86	83%	462	-51	90%	430	-83	84%	443	-70	86%
Collins ES	513	516	3	101%	535	22	104%	591	78	115%	417	-96	81%	430	-83	84%	484	-29	94%
Harvard ES	513	400	-113	78%	342	-171	67%	358	-155	70%	503	-10	98%	438	-75	85%	460	-53	90%
Midland ES	519	514	-5	99%	475	-44	92%	513	-6	99%	470	-49	91%	435	-84	84%	473	-46	91%
Brookdale ES	513	502	-11	98%	417	-96	81%	427	-86	83%	449	-64	88%	376	-137	73%	386	-127	75%
Christensen ES	475	447	-28	94%	378	-97	80%	386	-89	81%	464	-11	98%	392	-83	83%	401	-74	84%
Elmhurst ES	466	392	-74	84%	355	-111	76%	363	-103	78%	395	-71	85%	371	-95	80%	382	-84	82%
James Sales ES	513	409	-104	80%	355	-158	69%	357	-156	70%	459	-54	89%	393	-120	77%	395	-118	77%
Morris Ford MS	1,095	1,038	-57	95%	950	-145	87%	989	-106	90%	1,025	-70	94%	933	-162	85%	970	-125	89%
Perry G Keithley MS	1,025	901	-124	88%	774	-251	75%	734	-291	72%	914	-111	89%	791	-234	77%	754	-271	74%
Franklin Pierce HS	1,689	1,148	-541	68%	1,237	-452	73%	1,292	-397	76%	1,133	-556	67%	1,214	-475	72%	1,270	-419	75%
Washington HS	1,530	971	-559	63%	954	-576	62%	913	-617	60%	986	-544	64%	977	-553	64%	934	-596	61%

Existing Boundaries  
2019 Enrollment

Existing Boundaries  
Forecasted Enrollment

Scenario Boundaries  
2019 Enrollment

Scenario Boundaries  
Forecasted Enrollment

# Mtg7\_Scenario\_3E Map Statistics

## Socioeconomic Indicators

Based on 2019 enrollment ONLY, NOT FORECASTED

**SES**

**Baseline**

**Mtg7\_Scenario\_3E**

Grade Group	Attendance Area (School Boundary)	% Special Education	% Racial Diversity	% LEP	% LAP	% McKinney-Vento	%SPED	% Racial Diversity	% LEP	% LAP	% McKinney-Vento
ES	Central Avenue ES	11.1%	50.1%	11.1%	17.6%	1.1%	11.7%	49.5%	6.9%	16.5%	2.0%
ES	Collins ES	12.2%	59.1%	10.6%	20.7%	2.8%	12.0%	60.2%	11.6%	20.7%	2.2%
ES	Harvard ES	13.9%	83.7%	37.7%	30.6%	6.2%	13.4%	77.7%	32.5%	29.2%	4.9%
ES	Midland ES	15.0%	72.6%	13.8%	20.0%	4.1%	15.2%	73.9%	15.5%	20.1%	4.6%
ES	Brookdale ES	11.6%	70.9%	12.8%	23.7%	6.4%	10.2%	72.2%	12.9%	23.7%	6.1%
ES	Christensen ES	15.1%	76.1%	14.6%	14.9%	4.9%	15.2%	75.8%	14.9%	15.2%	4.7%
ES	Elmhurst ES	10.9%	70.1%	12.4%	18.7%	3.3%	11.1%	69.8%	12.7%	19.0%	3.2%
ES	James Sales ES	12.3%	71.9%	14.1%	25.9%	4.3%	13.0%	70.9%	13.2%	25.3%	5.1%
MS	Morris Ford MS	9.3%	69.0%	7.6%	17.8%	4.5%	9.3%	69.0%	7.6%	17.8%	4.5%
MS	Perry G Keithley MS	13.8%	70.0%	7.7%	18.6%	4.5%	13.8%	70.0%	7.7%	18.6%	4.5%
HS	Franklin Pierce HS	10.0%	62.3%	7.7%	1.4%	4.5%	10.0%	62.3%	7.7%	1.4%	4.5%
HS	Washington HS	14.6%	69.0%	5.9%	5.7%	6.9%	14.6%	69.0%	5.9%	5.7%	6.9%

# Committee Consensus Scenario XX Vote

**Pros:**

**Guiding Principles (truncated):**

- District-wide perspective to balance enrollment now and in the future
- Minimize disruption to special programs or populations
- Work to maintain feeder system
- Consider transportation impacts
- Maximize proximity to home/walkability
- Consider racial equity lens

**Cons:**

The Committee parent/guardian representatives voted XX to XX for boundary recommendation and provided it to the Superintendent the week of June 21, 2021. The Superintendent will present this recommendation to the Board of Directors on July 6<sup>th</sup>, 2021. The Board plans to vote on the recommendation in XX, 2021.

# Fist to Five

© 2019

**Fist**



I don't  
support  
this

**One**



I have  
some  
concerns, if  
they can be  
addressed,  
I would lend  
my support

**Two**



I have  
some  
concerns  
but will  
support it  
for now

**Three**



I can  
support  
this option

**Four**



I will  
support  
this option

**Five**



I will  
champion  
this option

# Transition Recommendations

## **Siblings:**

- Continue with older siblings at same school
- Transportation availability

## **Boundary exceptions:**

- Should be flexible and based on capacity
- Change area students should have priority over other transfer requests

## **Transportation:**

- Bussing for out of district McKinney Vento students - based on capacity/availability

## **Community outreach**

- An informational session before the transition
- Explain process and paperwork
- Invite parents to provide input
- Conduct survey

## **General**

- Students new to the district have to comply with new boundaries
- Earliest the new boundaries would be implemented is fall of 2022
- Should share the plan with families ASAP to put minds at ease and plan accordingly

# Board Recommendation

## July 6<sup>th</sup> at 12pm

