



STUDENT DEMOGRAPHICS

2020-2021

TABLE OF CONTENTS

<u>TOPICS</u>	<u>PAGE(S)</u>
Cover Letter	3
District Sites	4-5
Third Friday Count	6
K-12 Enrollments	7
Enrollment Projections	8
Kindergarten Enrollments	9-11
Analysis of Private School Enrollments	12
District Ethnic Enrollments	13
English Learner Enrollments	14
Free and Reduced Meals	15
Open Enrollment	16-18
Analysis of Transfer Students	19
Home-Based Education	20



WAUSAU SCHOOL DISTRICT

Longfellow Administration Center

415 Seymour Street • P.O. Box 359 • Wausau, Wisconsin 54402-0359 • 715-261-0500 • www.wausauschools.org
Dr. Keith W. Hilts, Superintendent of Schools

TO: Board of Education
Dr. Keith Hilts Superintendent of Schools
FROM: Jon Euting, Director of Technology and Media Services
DATE: October 26, 2020
RE: 2020-2021 Student Demographics

Each school year, the District completes an analysis of our student demographic information based on the state-mandated Third Friday in September Count. This information illustrates short and long-term trends. The data provides key information to inform both instructional and financial decisions. Finally, the data are used to describe our current conditions to organizations or in grant writing processes.

Important highlights from the full report follow:

- Enrollment in grades 4K-12 decreased this year. We have 426 fewer students than last year.
- Kindergarten enrollment continues to attract approximately 88% of available 5-year old students in the Wausau School District area.
- The Wausau School District continues to support a diverse student body with 36% of students representing a race other than white. Additionally, approximately 12% of students are English Learners and receive support.
- Analysis of available data reveals 572 students moved out of the Wausau School District. This is an increase of 248 students from the previous school year.
- As of the 2020 Third Friday Count, 185 students are listed at Home Based Education which is an increase of 38 students.
- The number of students leaving the Wausau School District through Open Enrollment increased by 168, for a total of 620 students. The number of students entering the Wausau School District through Open Enrollment increased by 17.
- The District Free/Reduced lunch overall average is 53% compared to 46% for 2019-2020 school year.

Please contact my office if you have any questions about the data presented.

Wausau School District Sites

Elementary Campuses

[Franklin Elementary](#)

[Grant Elementary](#)

[Hawthorn Hills Elementary](#)

[Hewitt-Texas Elementary](#)

[Thomas Jefferson Elementary](#)

[G.D. Jones Elementary](#)

[Lincoln Elementary](#)

[Maine Elementary](#)

[John Marshall Elementary](#)

[Rib Mountain Elementary](#)

[Riverview Elementary](#)

[South Mountain Elementary](#)

[Stettin Elementary](#)

Middle School Campuses

[Horace Mann Middle School](#)

[John Muir Middle School](#)

High School Campuses

[Wausau East High School](#)

[Wausau West High School](#)

Charter Campuses

[Enrich, Excel, Achieve Learning Academy](#)
(EEA)

[Wausau Area Montessori Charter School](#)
(Montessori)

[Wausau Area Virtual Education](#)
(WAVE)

Alternative Campuses

Prepare Empower Education
Rebuild
(PEER)

Stepping Stones Transition
Education Program 1
(STEP 1)

Stepping Stones Transition
Education Program 2
(STEP 2)

Alternative High School

Wausau School District
Pre - K - 12 Enrollment Information
Third Friday Count
September 18, 2020

	Franklin	Grant	Hawthorn Hills	Hewitt Texas	Thomas Jefferson	G.D. Jones	Lincoln	Maine	4K Outreach Sites	John Marshall	Rib Mountain	Riverview	South Mountain	Stettin	Montessori	Horace Mann	John Muir	EEA	East	West	Wave	Total	3rd Friday 2019	Difference
E3	0	0	5	0	0	22	0	0	0	0	0	4	0	0	0							31	41	-10
E4	0	0	0	0	0	16	0	0	0	0	0	0	0	0	0							16	16	0
E5	0	0	0	0	0	0	0	0	0	0	0	0	0	0	0							0	0	0
4 Year Old Kindergarten	0	0	45	0	91	88	0	0	127	0	0	55	0	0	0							406	493	-87
Kindergarten	33	26	36	10	43	50	33	34		27	28	66	33	56	12						9	496	562	-66
First	31	32	24	14	49	46	32	34		35	31	66	36	50	14						16	510	525	-15
Second	35	22	28	15	42	41	27	34		30	40	66	31	40	11						11	473	524	-51
Third	32	27	34	15	45	39	33	25		47	25	71	38	46	9						6	492	604	-112
Fourth	44	33	40	19	47	56	30	39		37	39	79	33	46	11						15	568	583	-15
Fifth	38	39	34	14	34	52	38	38		37	35	73	41	51	8						31	563	595	-32
Sixth															7	213	319				14	553	608	-55
Seventh																237	335	4			20	596	620	-24
Eighth																233	366	1			24	624	620	4
Ninth																		10	239	357	21	627	581	46
Tenth																		10	214	331	16	571	636	-65
Eleventh																		22	243	361	13	639	605	34
Twelfth																		13	235	345	30	623	601	22
Total	213	179	246	87	351	410	193	204	127	213	198	480	212	289	72	683	1020	60	931	1394	226	7788	8214	-426
2019 Total	238	224	283	111	394	445	215	236	145	263	231	508	238	309	115	750	1073	66	952	1370	49	8214		
Difference	-25	-45	-37	-24	-43	-35	-22	-32	-18	-50	-33	-28	-26	-20	-43	-67	-53	-6	-21	24	177	-426		

8215

2020 Preschool Enrollment	453
2019 Preschool Enrollment	550
Enrollment Difference	-97

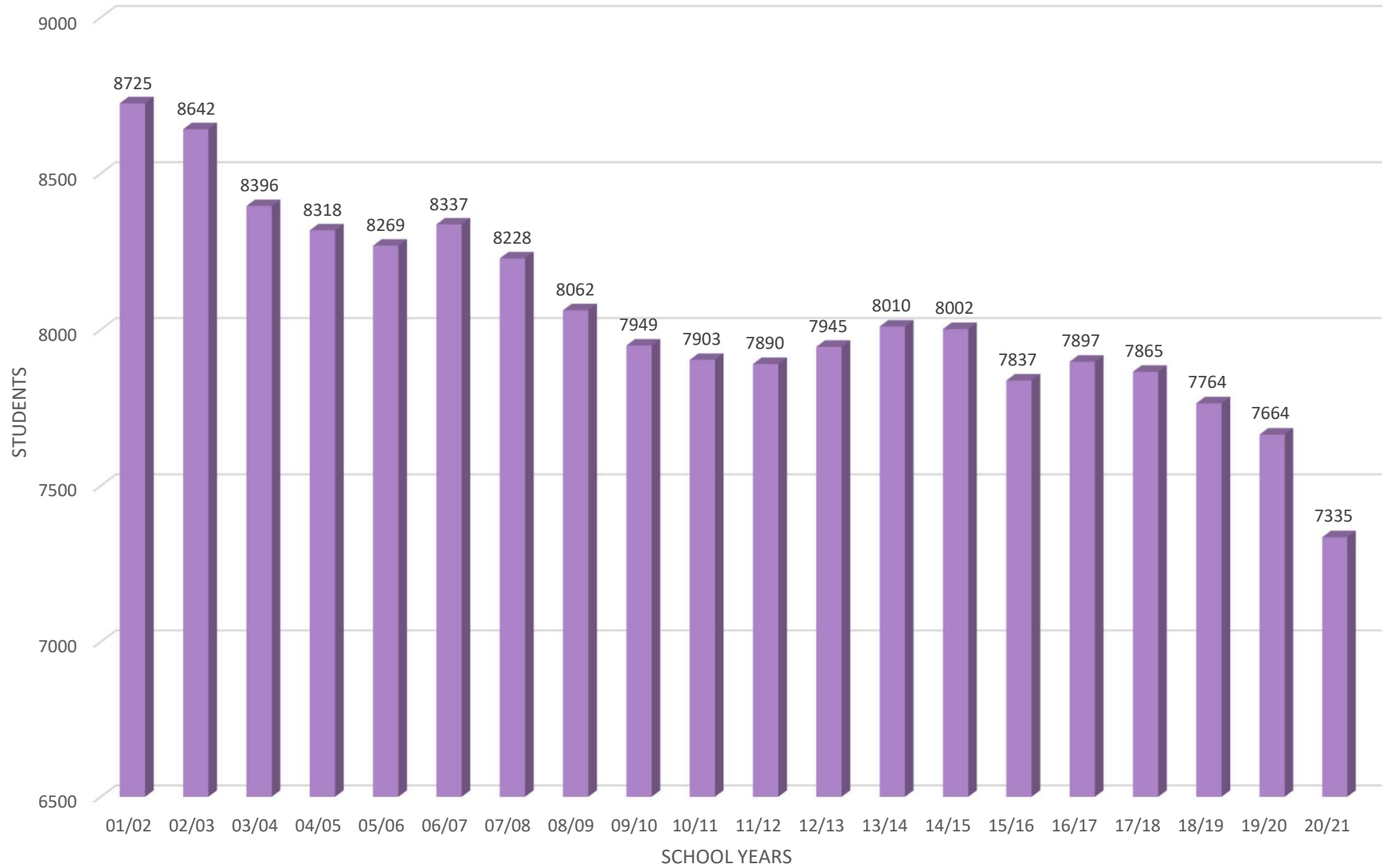
2020 Elementary Enrollment	3102
2019 Elementary Enrollment	3393
Enrollment Difference	-291

2020 Middle School Enrollment	1773
2019 Middle School Enrollment	1848
Enrollment Difference	-75

2020 High School Enrollment	2460
2019 High School Enrollment	2423
Enrollment Difference	37

2020 K-12 Enrollment	7335
2019 K-12 Enrollment	7664
Enrollment Difference	-329

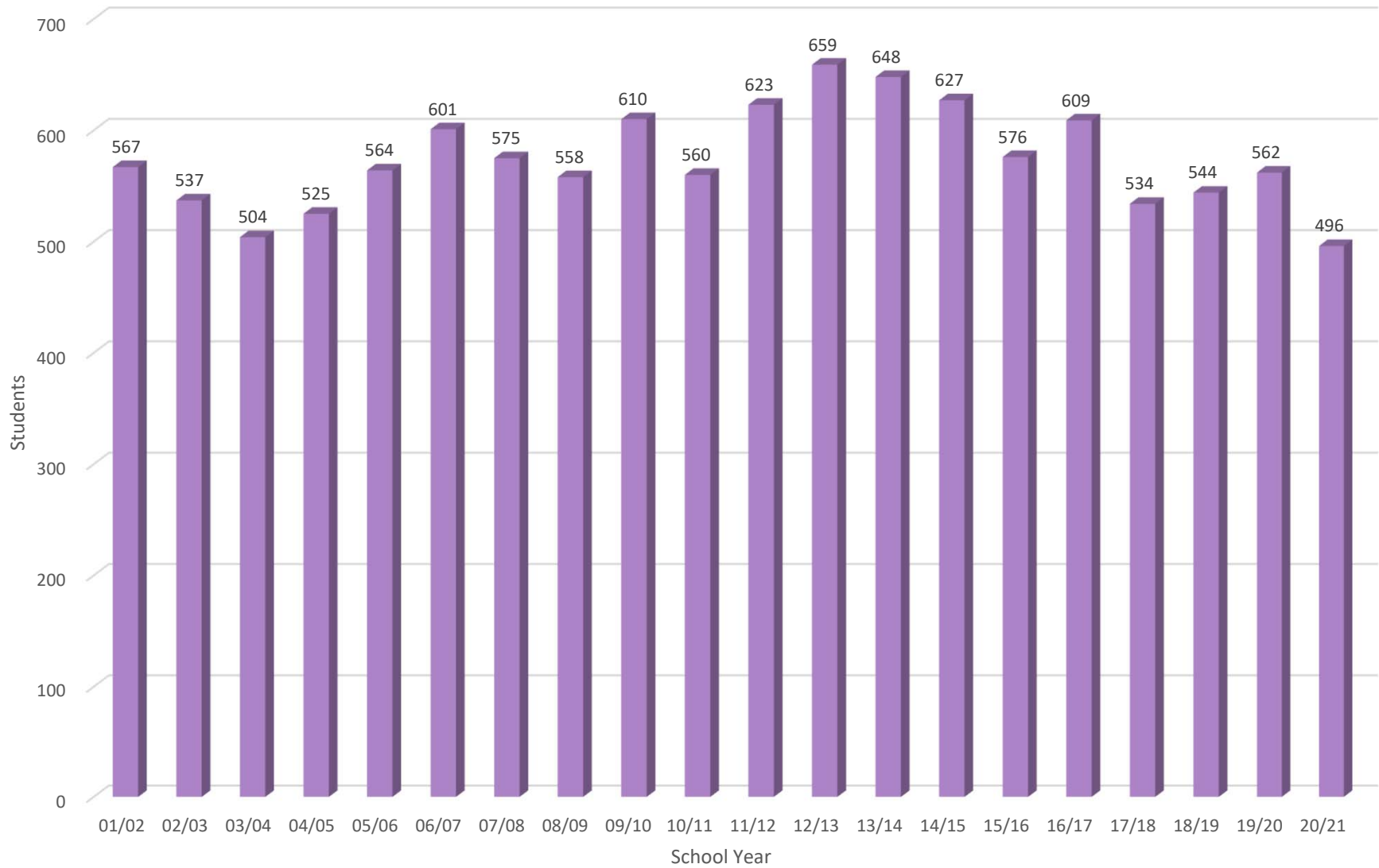
Wausau School District
K-12 Enrollments
September 18, 2020



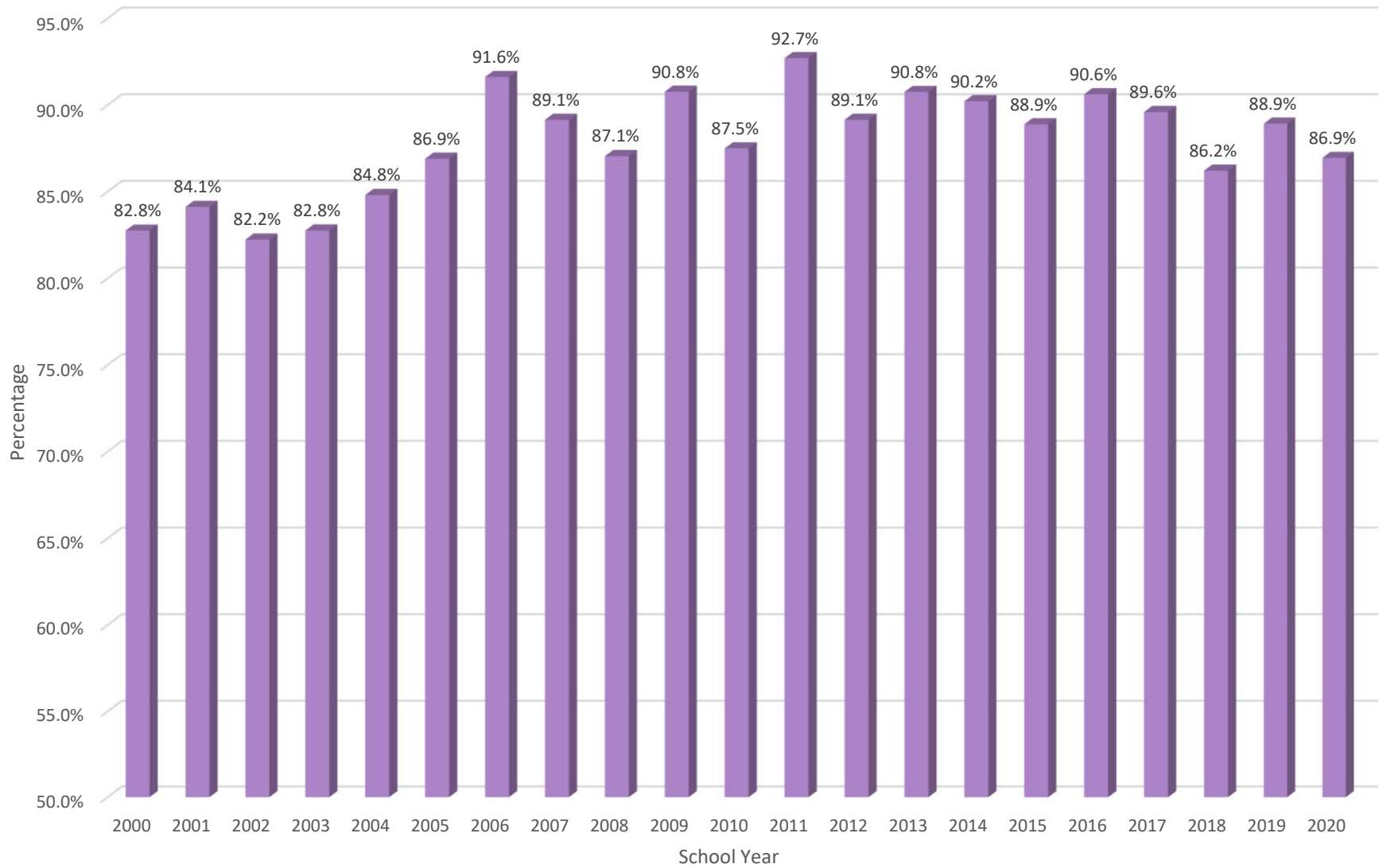
Wausau School District
Enrollment Projections
September 18, 2020

	Actual Enrollments															Projected Enrollments					
	2006 Sept. 2006	2007 Sept. 2007	2008 Sept. 2008	2009 Sept. 2009	2010 Sept. 2010	2011 Sept. 2011	2012 Sept. 2012	2013 Sept. 2013	2014 Sept. 2014	2015 Sept. 2015	2016 Sept. 2016	2017 Sept. 2017	2018 Sept. 2018	2019 Sept. 2019	2020 Sept. 2020	2021 Sept. 2021	2022 Sept. 2022	2023 Sept. 2023	2024 Sept. 2024	2025 Sept. 2025	2026 Sept. 2026
K-12	8337	8228	8062	7949	7903	7890	7942	8009	8002	7837	7897	7865	7758	7664	7335	7172	6997	6909	6718	6554	6394
		(109)	(166)	(113)	(46)	(13)	52	67	(7)	(165)	60	(32)	(107)	(94)	(329)	(163)	(175)	(88)	(191)	(164)	(160)
PK-12	8839	8778	8677	8526	8552	8589	8618	8660	8627	8443	8411	8384	8302	8214	7788	7663	7503	7379	7227	7050	6888
		(61)	(101)	(151)	26	37	29	42	(33)	(184)	(32)	(27)	(82)	(88)	(426)	(125)	(160)	(124)	(152)	(177)	(162)
9-12	3043	2992	2890	2742	2675	2659	2574	2570	2512	2511	2501	2445	2465	2423	2460	2518	2505	2511	2461	2397	2266
		(51)	(102)	(148)	(67)	(16)	(85)	(4)	(58)	(1)	(10)	(56)	20	(42)	37	58	(13)	6	(50)	(64)	(131)
6-8	1868	1808	1794	1748	1761	1723	1787	1755	1743	1690	1725	1808	1805	1848	1773	1714	1672	1594	1480	1384	1354
		(60)	(14)	(46)	13	(38)	64	(32)	(12)	(53)	35	83	(3)	43	(75)	(59)	(42)	(78)	(114)	(96)	(30)
K-5	3426	3428	3378	3459	3467	3508	3581	3684	3747	3636	3671	3612	3488	3393	3102	2940	2820	2804	2777	2773	2774
		2	(50)	81	8	41	73	103	63	(111)	35	(59)	(124)	(95)	(291)	(162)	(120)	(16)	(27)	(4)	1
Early Childhood 4 Year Old Kindergarten	502	550	615	577	649	699	676	651	625	606	514	519	544	550	453	491	506	470	509	496	494
		48	65	(38)	72	50	(23)	(25)	(26)	(19)	(92)	5	25	6	(97)	38	15	(36)	39	(13)	(2)

Wausau School District
Kindergarten Enrollment
September 18, 2020



Wausau School District
Percent of Kindergartners Entering
September 18, 2020



Wausau School District
Kindergarten Enrollments Public and Private
September 18, 2020

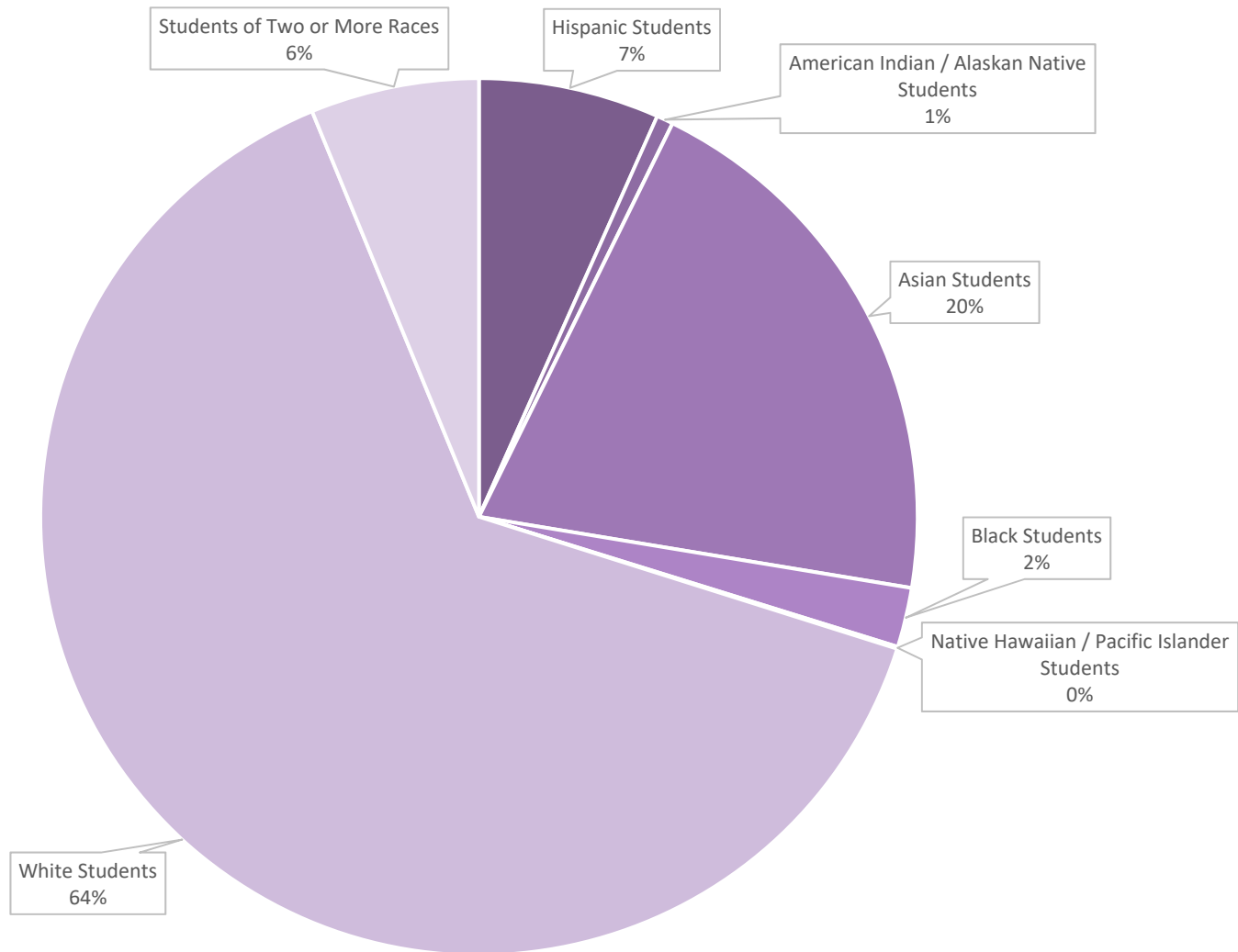
School Year	Wausau School District Total	Private School Total	Total Kindergarten Enrollment	Wausau School District Percent of Kindergarten Enrollment
2001	567	107	674	84.1%
2002	537	116	653	82.2%
2003	504	105	609	82.8%
2004	525	94	619	84.8%
2005	564	85	649	86.9%
2006	601	55	656	91.6%
2007	575	70	645	89.1%
2008	558	83	641	87.1%
2009	610	62	672	90.8%
2010	560	80	640	87.5%
2011	623	49	672	92.7%
2012	657	80	737	89.1%
2013	648	66	714	90.8%
2014	627	68	695	90.2%
2015	576	72	648	88.9%
2016	609	63	672	90.6%
2017	534	62	596	89.6%
2018	544	87	631	86.2%
2019	562	70	632	88.9%
2020	496	74	570	87.0%
AVERAGE OVER LAST FOUR YEARS >>>>				88.5%

Wausau School District
Analysis of Private School Enrollments
September 18, 2020

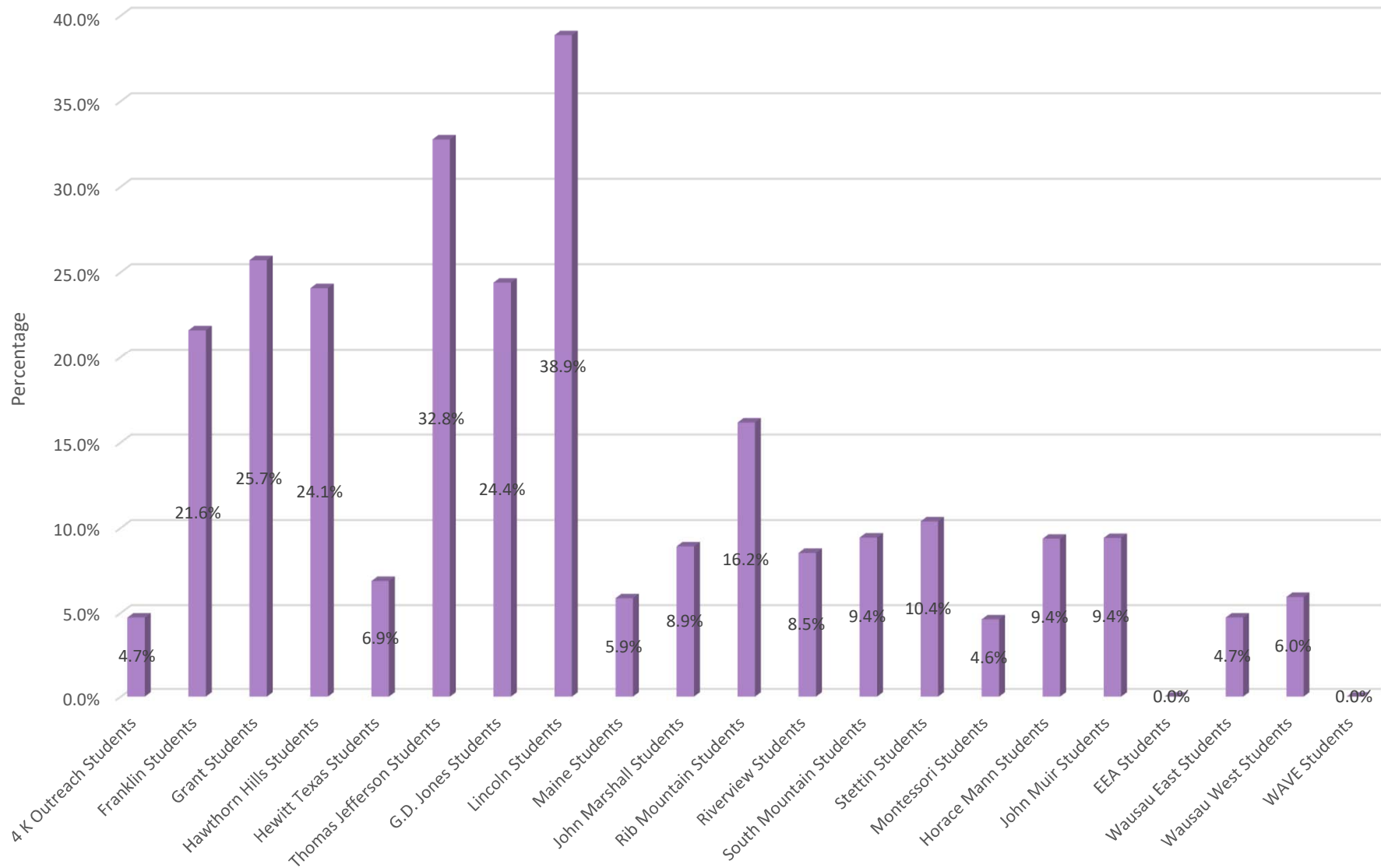
	K4		K		1		2		3		4		5		6		7		8		9		10		11		12		TOTALS	
	ENR	WSD	ENR	WSD	ENR	WSD	ENR	WSD	ENR	WSD	ENR	WSD	ENR	WSD	ENR	WSD	ENR	WSD	ENR	WSD	ENR	WSD	ENR	WSD	ENR	WSD	ENR	WSD	ENR	WSD
Newman Middle/High	0	0	0	0	0	0	0	0	0	0	0	0	0	0	41	26	43	20	52	36	31	19	40	30	30	20	28	17	265	168
St. Annes	0	0	22	18	27	21	32	26	24	21	20	18	33	29	0	0	0	0	0	0	0	0	0	0	0	0	0	0	158	133
Trinity Lutheran - Wausau	18	11	24	21	24	18	24	19	17	15	16	9	16	14	13	8	13	7	18	13	0	0	0	0	0	0	0	0	183	135
Northland	0	0	0	0	0	0	0	0	0	0	0	0	0	0	0	0	0	0	0	0	20	3	17	3	10	0	15	3	62	9
WI Valley Lutheran	0	0	0	0	0	0	0	0	0	0	0	0	0	0	0	0	0	0	0	0	4	0	7	1	12	5	11	4	34	10
Faith Christian	18	14	20	18	35	23	21	13	21	16	12	8	20	14	13	8	14	8	14	7	9	4	9	3	7	2	9	5	222	143
NCES St Mark's	33	4	16	4	15	3	19	1	17	3	13	1	13	1	0	0	0	0	0	0	0	0	0	0	0	0	0	0	126	17
Our Saviors	4	2	5	5	4	2	5	4	2	0	4	3	2	2	5	3	0	0	3	2	0	0	0	0	0	0	0	0	34	23
ST Therese	33	4	0	0	0	0	0	0	0	0	0	0	0	0	0	0	0	0	0	0	0	0	0	0	0	0	0	0	33	4
ST Michael's ECC	32	27	0	0	0	0	0	0	0	0	0	0	0	0	0	0	0	0	0	0	0	0	0	0	0	0	0	0	32	27
St. John - Wausau	9	4	9	4	3	2	7	4	2	1	6	4	4	0	4	2	1	0	2	1	0	0	0	0	0	0	0	0	47	22
St. John - Merrill	21	0	11	0	11	0	19	0	20	0	8	0	11	0	3	0	5	0	7	0	0	0	0	0	0	0	0	0	116	0
Trinity Lutheran - Merrill	24	1	18	1	15	1	19	0	17	1	16	1	11	0	20	0	16	1	3	0	0	0	0	0	0	0	0	0	159	6
St. Peters School	0	0	9	3	8	3	5	4	12	2	6	1	9	3	6	2	10	2	7	1	0	0	0	0	0	0	0	0	72	21
Hillside Christian	0	0	0	0	2	2	1	1	1	0	1	1	1	1	0	0	0	0	4	2	0	0	0	0	0	0	0	0	10	7
Total Enrollment	192		134		144		152		133		102		120		105		102		110		64		73		59		63		1553	
WSD Enrollment		67		74		75		72		59		46		64		49		38		62		26		37		27		29		725

4 K Total	192	Percent of 4K Students from Wausau School District	35%
Elementary Total	785	Percent of Elementary Students from Wausau School District	50%
Middle School Total	317	Percent of Middle School Students from Wausau School District	47%
High School Total	259	Percent of High School Students from Wausau School District	46%

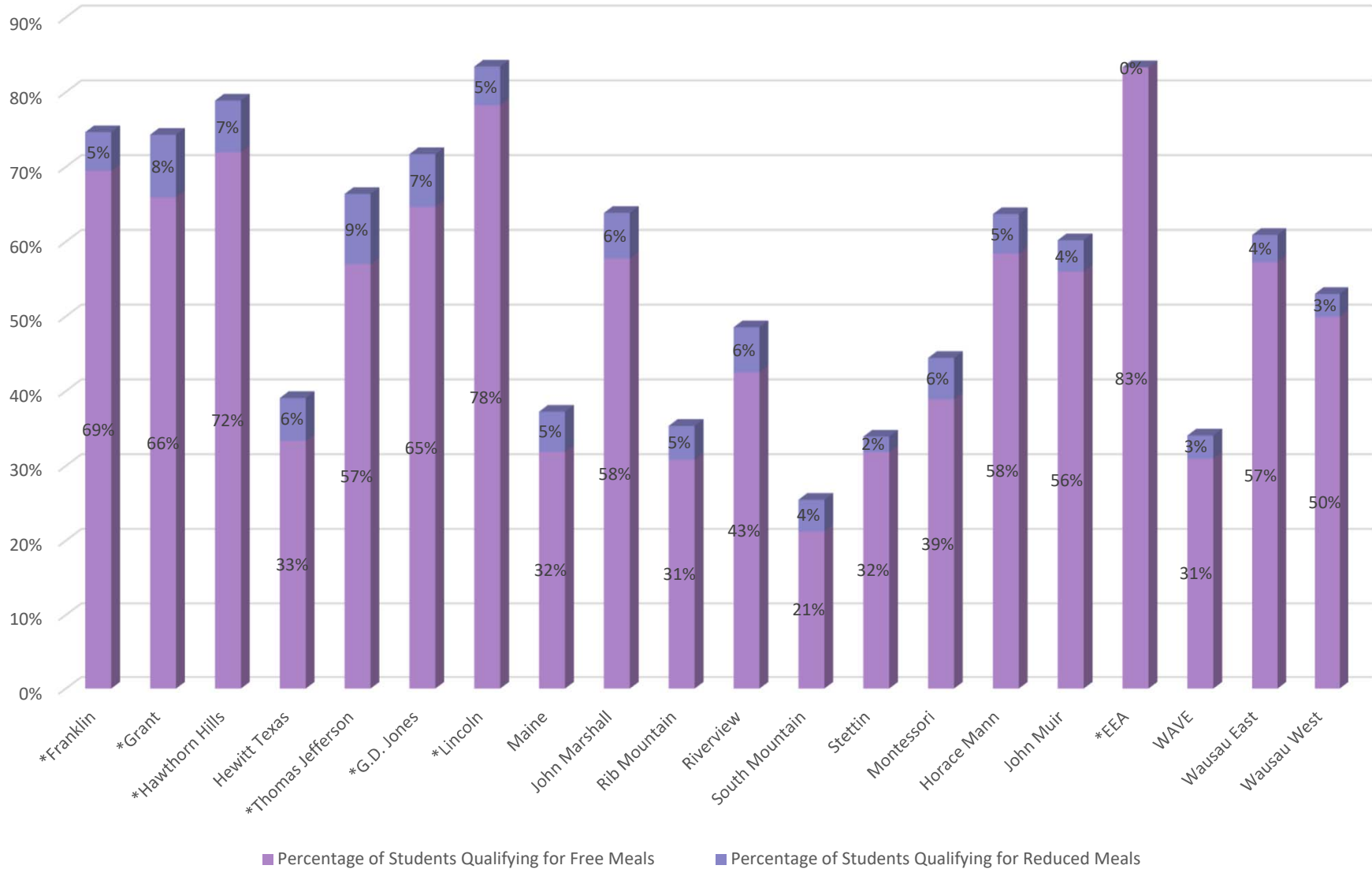
Wausau School District
Ethnicity Percentages
September 18, 2020



Wausau School District
English Learner Enrollments
September 18, 2020



Wausau School District Free and Reduced Meal Percentages September 18, 2020



Wausau School District
Analysis of All Open Enrollment Students
September 18, 2020

Open Enroll INTO the District FROM:				Open Enroll OUT OF the District TO:		
Elementary School	Middle School	High School	FROM or TO	Elementary School	Middle School	High School
0	0	0	Abbotsford	1	0	0
1	0	0	Antigo	0	0	0
0	0	0	Appleton	4	2	1
0	1	1	Athens	3	1	0
2	0	0	Bowler	0	0	0
72	32	69	D.C. Everest	173	48	70
1	2	3	Edgar	7	2	0
0	0	0	Grantsburg	0	0	3
9	3	5	Marathon	44	14	19
0	0	0	McFarland	9	4	6
0	0	0	Medford	37	18	11
12	0	6	Merrill	54	11	8
25	7	13	Mosinee	27	5	10
0	0	0	Northern Ozaukee	3	0	1
0	0	0	Rib Lake	0	0	1
2	3	0	Rhineland	0	0	0
0	0	1	Rice Lake	0	0	0
1	0	0	Stevens Point	2	3	0
0	1	2	Stratford	0	0	1
0	0	2	Suring	0	0	0
0	0	2	Tomahawk	1	0	0
0	0	0	Tomorrow River	4	0	0
0	0	0	Waukesha	2	2	6
0	0	3	Wittenberg-Birnamwood	2	0	0
125	49	107		373	110	137

Total	281
-------	-----

Total	620
-------	-----

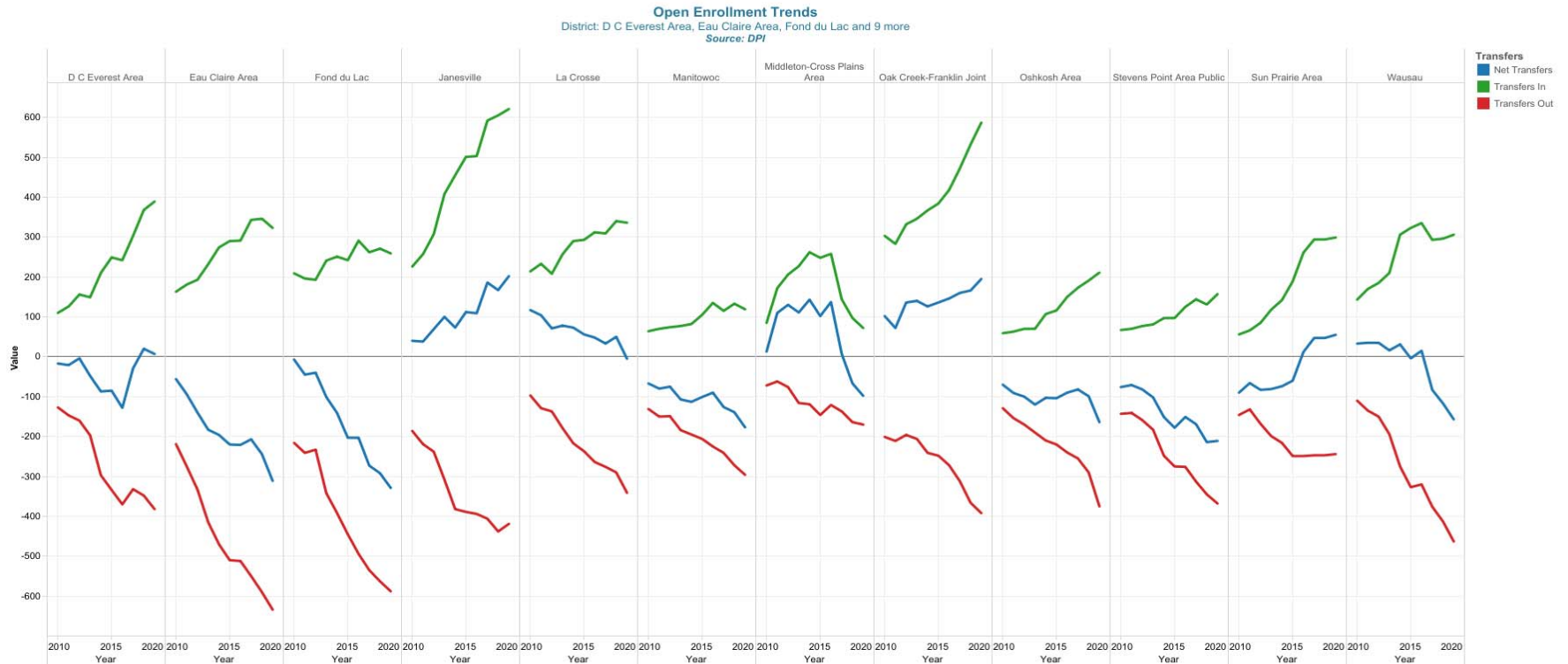
Wausau School District
Analysis of New Open Enrollment Students
September 18, 2020

Open Enroll INTO the District FROM:				Open Enroll OUT OF the District TO:		
Elementary School	Middle School	High School	FROM or TO	Elementary School	Middle School	High School
0	0	0	Abbotsford	0	0	0
1	0	0	Antigo	0	0	0
0	0	0	Appleton	3	2	1
0	1	1	Athens	3	1	0
2	0	0	Bowler	0	0	0
37	3	14	D.C. Everest	107	12	11
1	0	2	Edgar	4	2	0
0	0	0	Grantsburg	0	0	0
4	0	1	Marathon	12	1	2
0	0	0	McFarland	3	2	3
0	0	0	Medford	27	8	4
10	0	2	Merrill	34	3	2
13	1	5	Mosinee	21	0	4
0	0	0	Northern Ozaukee	3	0	0
0	0	0	Rib Lake	0	0	0
2	3	0	Rhineland	0	0	0
0	0	0	Rice Lake	0	0	0
1	0	0	Stevens Point	2	3	0
0	0	0	Stratford	0	0	0
0	0	2	Suring	0	0	0
0	0	2	Tomahawk	1	0	0
0	0	0	Tomorrow River	2	0	0
0	0	0	Waukesha	2	1	2
0	0	1	Wittenberg-Birnamwood	1	0	0
71	8	30		225	35	29

Total	109
-------	-----

Total	289
-------	-----

Wausau School District Analysis of Open Enrollment Trends of Similar Sized Districts September 18, 2020



The above graph depicts Open Enrollment trends from school districts similar to Wausau in the State of Wisconsin for the previous 10 school years.

Points of Importance

- Each district is demonstrating increasing numbers of students opting to Transfer Out through Open Enrollment
- The majority of districts are also experiencing a decrease in Net Transfers through Open Enrollment
- The overall numbers from these districts would also indicate an increasing mobility of students between districts through Open Enrollment

Wausau School District
Analysis of Transfer Students
September 18, 2020

Moving INTO the District FROM:

Moving OUT OF the District TO:

Elementary School	Middle School	High School	<i>FROM or TO</i>	Elementary School	Middle School	High School
19	16	28	Private School	64	15	9
26	6	5	DC Everest	89	21	16
0	3	1	Mosinee	20	5	6
5	1	4	Merrill	18	4	6
1	2	0	Marathon	9	0	1
1	4	4	Home Based Ed.	56	19	2
39	30	46	Other WI School Districts	90	30	21
56	21	19	Out of State	36	13	17
0	1	0	Unknown	2	0	3
147	84	107		384	107	81

Total

338

Total

572

*Includes students who attended the Wausau School District for at least one school day.

Wausau School District
Home-Based Education Students
September 18, 2020

Grade Level	2008-2009	2009-2010	2010-2011	2011-2012	2012-2013	2013-2014	2014-2015	2015-2016	2016-2017	2017-2018	2018-2019	2019-2020	2020-2021
First	9	12	10	13	12	12	15	16	11	12	6	10	15
Second	10	9	12	12	10	14	15	12	12	7	10	7	19
Third	8	7	9	14	5	16	13	12	11	9	4	8	16
Fourth	8	12	9	8	12	3	11	16	10	11	10	6	20
Fifth	7	9	6	7	10	12	5	7	12	8	8	8	10
Sixth	16	11	7	6	9	6	18	9	9	10	5	9	16
Seventh	10	13	12	8	5	10	12	17	9	10	7	7	6
Eighth	7	8	12	5	2	3	13	10	9	3	4	11	12
Ninth	13	6	6	11	8	5	10	18	10	10	4	6	7
Tenth	12	8	8	3	8	6	4	9	9	9	3	6	7
Eleventh	6	14	3	4	0	9	5	3	7	8	6	4	2
Twelfth	10	5	10	5	7	2	14	2	4	7	4	6	3
PK-8 Ungraded	16	22	26	31	34	22	18	40	50	44	30	47	40
9-12 Ungraded	9	9	19	11	12	11	9	11	16	10	7	12	12
Total	141	145	149	138	134	131	162	182	179	158	108	147	185

* Home-Based Education numbers reflect year-end totals except for the current year, which is the total from the Department of Public Instruction.