

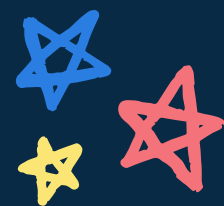
Franklin Special School District

District Improvement Plan

2021-2022



Goal 1:
Increased
Academic
Achievement
in ELA
(English
Language
Arts)



IMPLEMENT EFFECTIVE
STANDARDS-ALIGNED TIER 1
INSTRUCTION




ASSIST SCHOOL LITERACY TEAMS



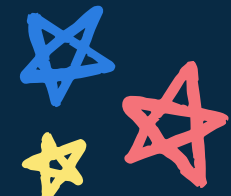
SUPPORT PLANNING AND
INSTRUCTION FOR STUDENTS
WITH CHARACTERISTICS OF
DYSLEXIA



SUPPORT ENGLISH LANGUAGE
LEARNERS



Goal 2:
Supporting
Student
Well-being




UTILIZE A TIERED BEHAVIOR
SUPPORT PROGRAM AT EACH
CAMPUS



WORK WITH COMMUNITY
AGENCIES TO PROVIDE
RESOURCES FOR STUDENT AND
FAMILY SUPPORT



UTILIZE A PROGRESSIVE
TRUANCY INTERVENTION PLAN
CONSISTENT WITH STATE LAW AT
EACH CAMPUS



Goal 3:
Supporting
EL (English
Learners)
Subgroup



INCREASE THE EFFECTIVE USE
OF IMAGINE LEARNING



CREATE COLLABORATIVE
PROFESSIONAL LEARNING
OPPORTUNITIES FOR TEACHERS
WHO WORK WITH ENGLISH
LEARNERS



INCREASE THE EFFECTIVE USE
OF I-READY



Goal 4:
Targeted
Educator
Professional
Development



PROMOTE LEADERSHIP
DEVELOPMENT



VIRTUAL LEARNING
PROFESSIONAL LEARNING



MONITORING AND SUPPORT OF
HIGH-QUALITY INSTRUCTIONAL
MATERIALS



CONTINUE PARAPROFESSIONAL
DEVELOPMENT



Goal 5:
Supporting
Students
with
Disabilities



PROVIDE HIGH-QUALITY EVIDENCE-BASED, INTENSE INTERVENTION MATERIALS AND RESOURCES FOR SWD



INCREASE PARTICIPATION OF SWD IN THE LEAST RESTRICTIVE ENVIRONMENT



INCREASE ACADEMIC ACHIEVEMENT & GROWTH OF SWD ON STATE ASSESSMENTS



INCREASE PARTICIPATION OF SWD IN GRADES 3-8 ON STATE ASSESSMENTS



To see the full
District
Improvement
Plan,
click below:

[LINK TO CURRENT PLAN](#)