

ENROLLMENT TRENDS & PROJECTIONS UPDATE

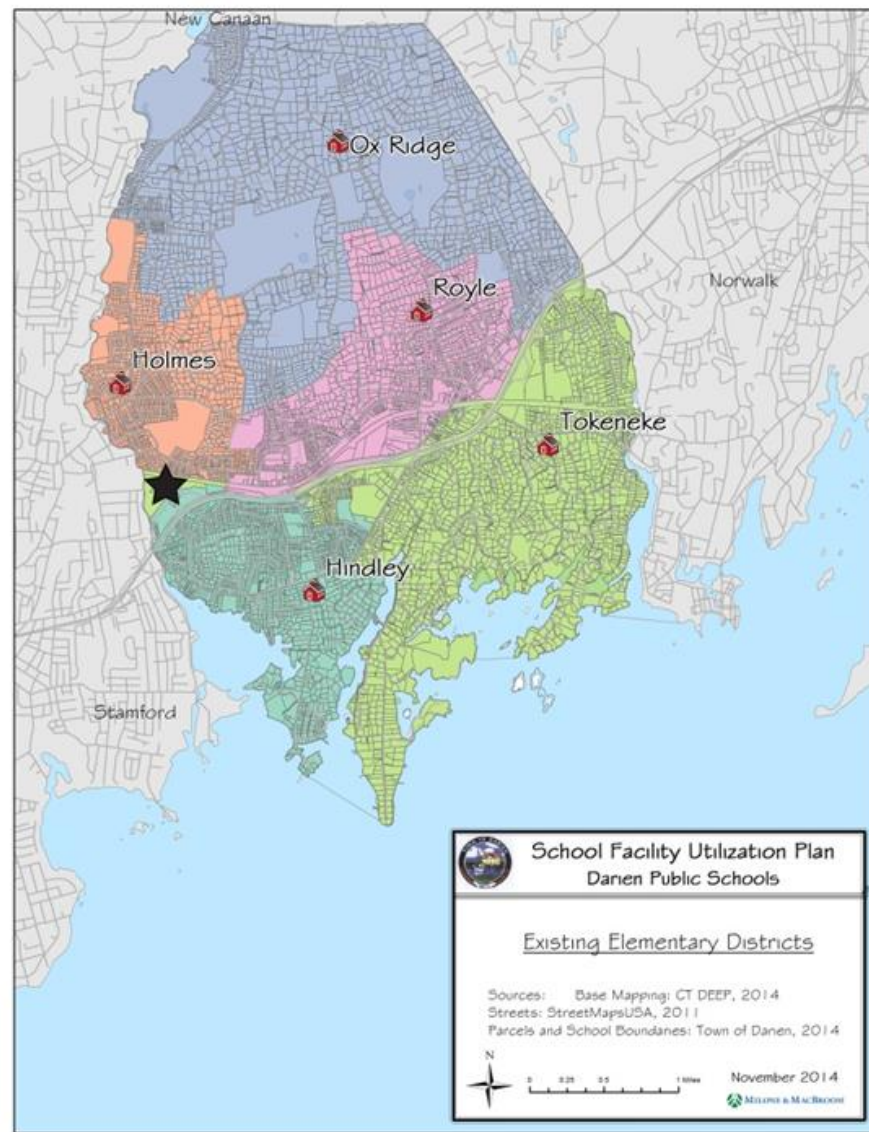


NOVEMBER 2018



Introduction

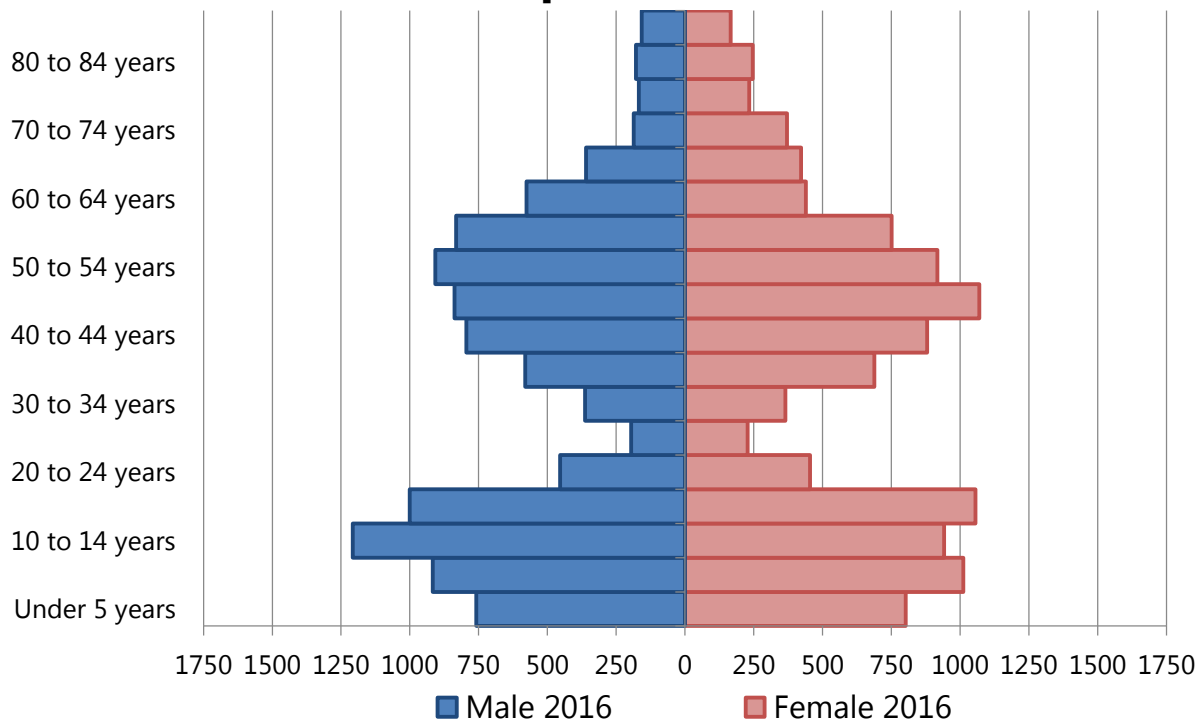
- Key Demographic, Housing and Economic Trends
- Enrollment Trends
- Enrollment Projections





KEY COMMUNITY TRENDS - POPULATION

Darien Population - 2016



Source: U.S. Census 2010, ACS 2016

- Darien's total population increased by 3.8% from 2010 to 2016
 - Females of Child Bearing Age (18-44) Increased by 7.9% during the same time period
 - The Student Age population (5-17) decreased by 3% during the same time period
- The largest increases were in the 15-24 age groups as well as males age 55-64



Key Community Trends

- Home sales are on the decline since 2015 and 2018 estimated sales resemble 2010 post recession sales
 - Total sales remained relatively stable during Great Recession
 - Darien recovered quicker than Fairfield county in home sales but 2018 is estimated to be lower than the countywide estimate for home sales
 - Primarily turn-over of existing units
- **Sales influential on enrollments as incoming enrollments increasingly not the result of births in the community**
- According 2016 POCD, Darien is 97% developed and the existing land use pattern is set. Future growth will come through redevelopment in Downtown and Noroton Heights



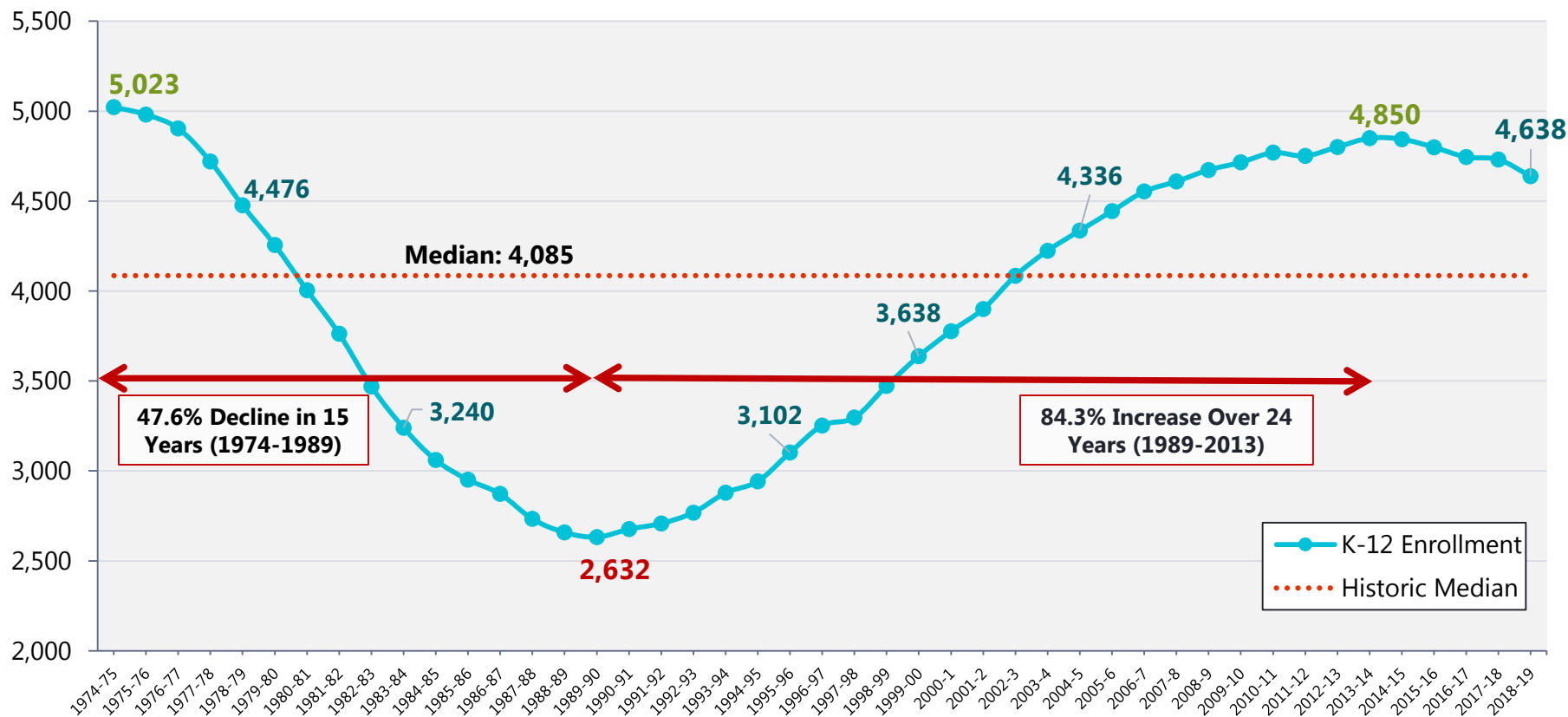
Key Community Trends

- Anticipating transit-oriented, mixed-use development permitting over next five years
 - Primarily redevelopment of existing sites in Noroton Heights and Downtown in close proximity to train station
 - Transit-oriented multi-family housing tends not to attract many families (depending on unit size)
 - 181 units approved across two projects across from Noroton Heights Train Station in the Royle District .
 - The Pemberton 16 has been built for the elderly and a new Baywater project is in the midst of a Planning & Zoning Commission Review Process for 12 apartments proposed for the Elderly/Special Needs Adults.
- The Corbin Block if approved may have a significant impact on school enrollment. New development needs to be closely monitored



K-12 Enrollment Trends

Historic Enrollment, Darien Public Schools, K-12th Grade
(1974-75 to 2018-19)



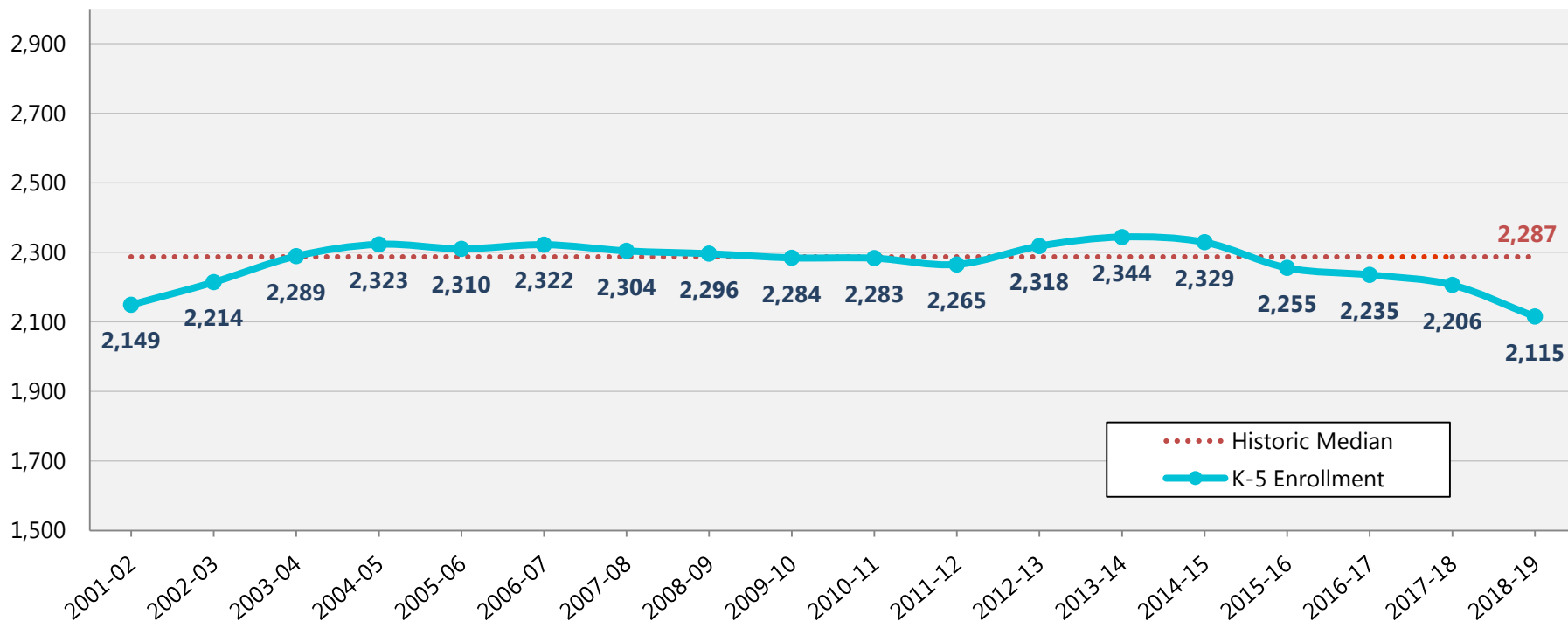
Source: Ed Sight: 1974-2017, Darien Public Schools Enrollment Reports 2018

- Enrollment growth strongest in the 1990s and early 2000s
- Flattening from 2010 on with a steady decrease from 2014 on
- Darien enrollment peaked 10-years after statewide enrollment peak



K-5 Enrollment Trends

Historic Enrollment, Darien Public Schools: K-5th Grade: 2001-02 to 2017-18



- Very stable from 2004-05 through 2006-07
- Small decrease from 2006-07 to 2011-12 (-2.5% over 5 years)
 - Followed by 3.4% increase to 2013-14
- A significant 9.8% decrease in enrollment took place following the 2014-15 year, hitting a record low in 2018-19



K-5 Enrollment Trends

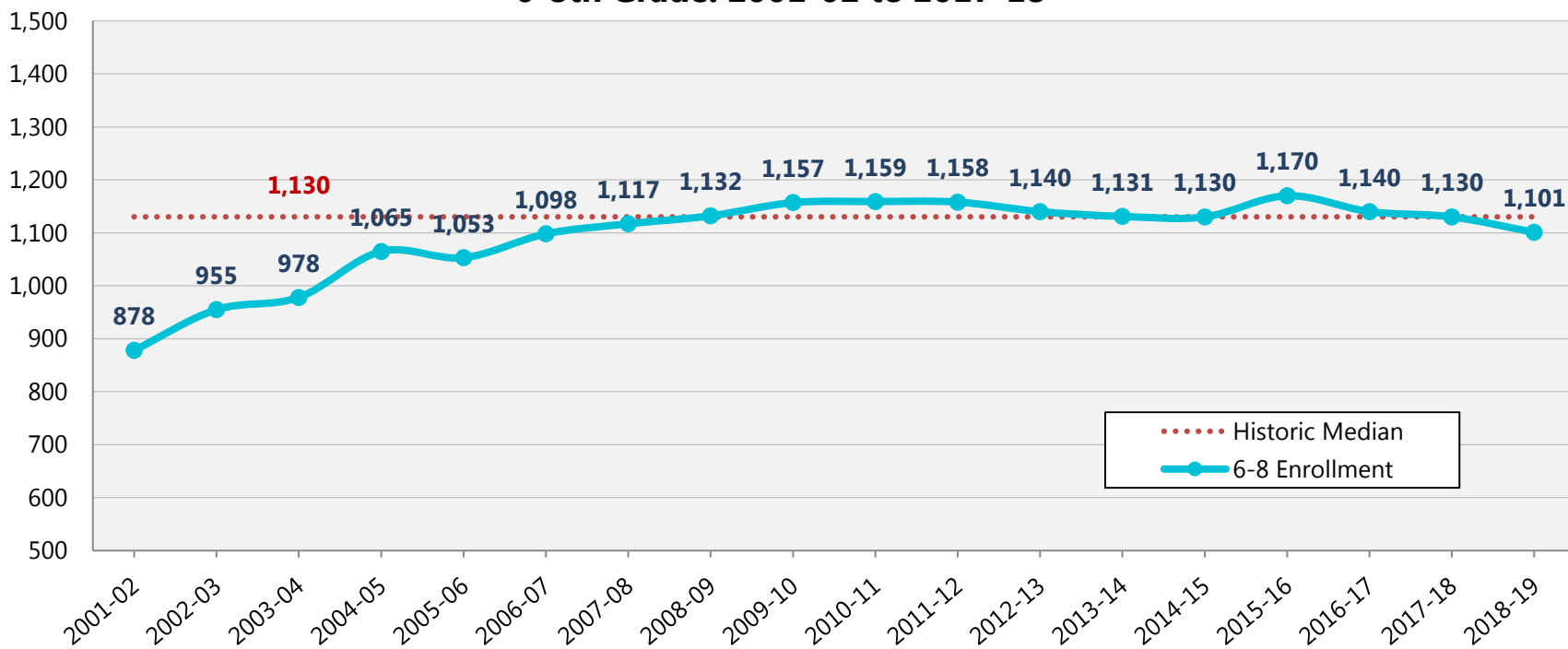
Darien Public School Enrollment History (K-5)								
School Year	Birth Year	Births	K	1	2	3	4	5
2001-02	1996	354	372	358	361	361	325	372
2002-03	1997	365	400	390	370	370	372	312
2003-04	1998	365	406	397	384	371	363	368
2004-05	1999	334	368	425	402	395	361	372
2005-06	2000	355	398	384	405	386	390	347
2006-07	2001	326	381	399	379	398	377	388
2007-08	2002	319	394	373	396	372	394	375
2008-09	2003	295	363	399	371	408	365	390
2009-10	2004	335	422	355	389	367	392	359
2010-11	2005	300	379	421	356	369	374	384
2011-12	2006	290	387	369	423	358	367	361
2012-13	2007	273	388	393	371	433	373	360
2013-14	2008	261	398	383	388	372	430	373
2014-15	2009	243	375	406	380	392	367	409
2015-16	2010	221	362	372	402	380	380	359
2016-17	2011	209	367	354	374	400	378	362
2017-18	2012	199	337	363	358	367	402	379
2018-19	2013	193	318	338	366	350	350	393

- The large 2009-10 Kindergarten cohort will now be entering 9th grade in 2018-19
- 2018-19 Kindergarten class is the smallest in recent memory



6-8 Enrollment Trends

**Historic Enrollment, Darien Public Schools:
6-8th Grade: 2001-02 to 2017-18**

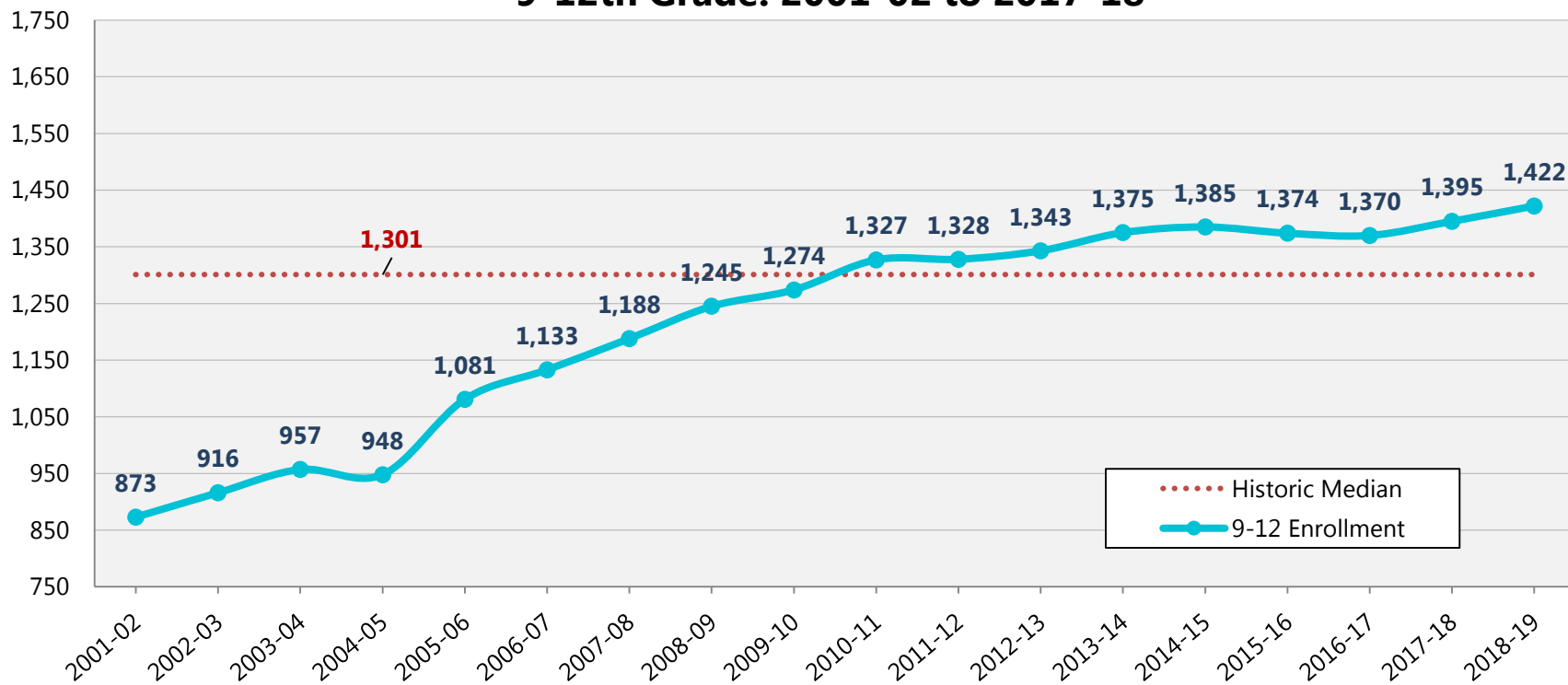


- Middle school enrollment stabilized five years later than elementary enrollments, from 2009-10 to 2011-12
- A 3.5% increase took place from 2014-15 to 2015-16
 - Followed by a 5.9% decrease to 2018-19 where enrollment resembles the 2006-07 year



9-12 Enrollment Trends

**Historic Enrollment, Darien Public Schools:
9-12th Grade: 2001-02 to 2017-18**

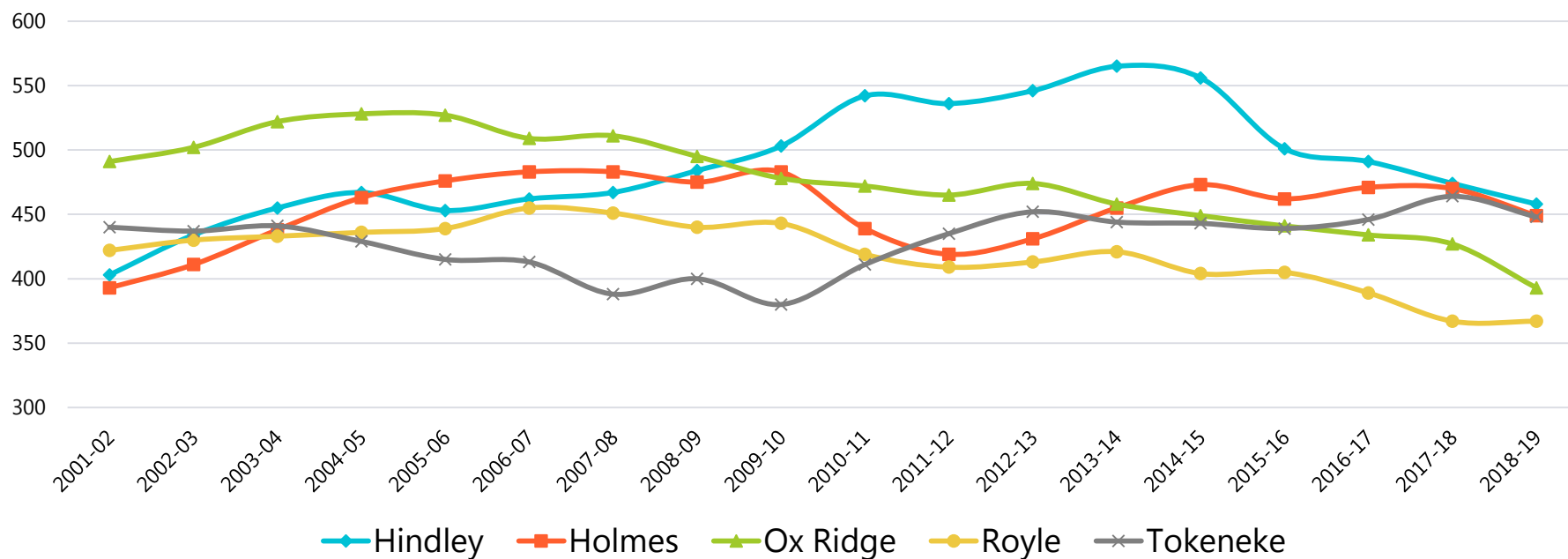


- Continual increases in enrollment (62.9% increase since 2001-02)
- A 2.7% increase in enrollment took place from 2014-15
- 2018-19 enrollment is highest in recent memory



Elementary Enrollment Trends

Historic Elementary (K-5) Enrollment by School Darien Public Schools, 2001-02 to 2018-19



- Despite relatively stable total elementary enrollments, individual school trends vary
- Hindley has experienced the steepest decline in enrollment with a 17% decline since 2014-15
- Although Tokeneke is slightly down from the 2017-18 year it has had increasing enrollment since 2009-10 (includes Avalon development)
- Ox Ridge has been on a steady decline since 2003-04 and has hit a recent historic low enrollment of 421 students
- Holmes and Royle have the most fluctuation in year to year enrollment but have relatively average enrollments for the 2018-19 year



Projections Methodology

Persistency Ratios

- Persistency ratios are calculated from historic enrollment data to determine growth or loss in a class as it progresses through school system
- Persistency ratios account for the various external factors affecting enrollments, including housing characteristics, residential development, economic conditions, student transfers in and out of the system, and student mobility
- Persistency Ratio of 1.0 means cohort size remains the same; 1.05 means the cohort size increases by 5%, or a cohort of 100 grows to 105 the following year
- Changes in population, housing stock and tenure, and economic conditions help explain persistency ratios
- Full-day kindergarten began in 2012-13. Years prior to 2012-13 were not used for B-K and K-1 persistencies



Projection Caveats & Assumptions

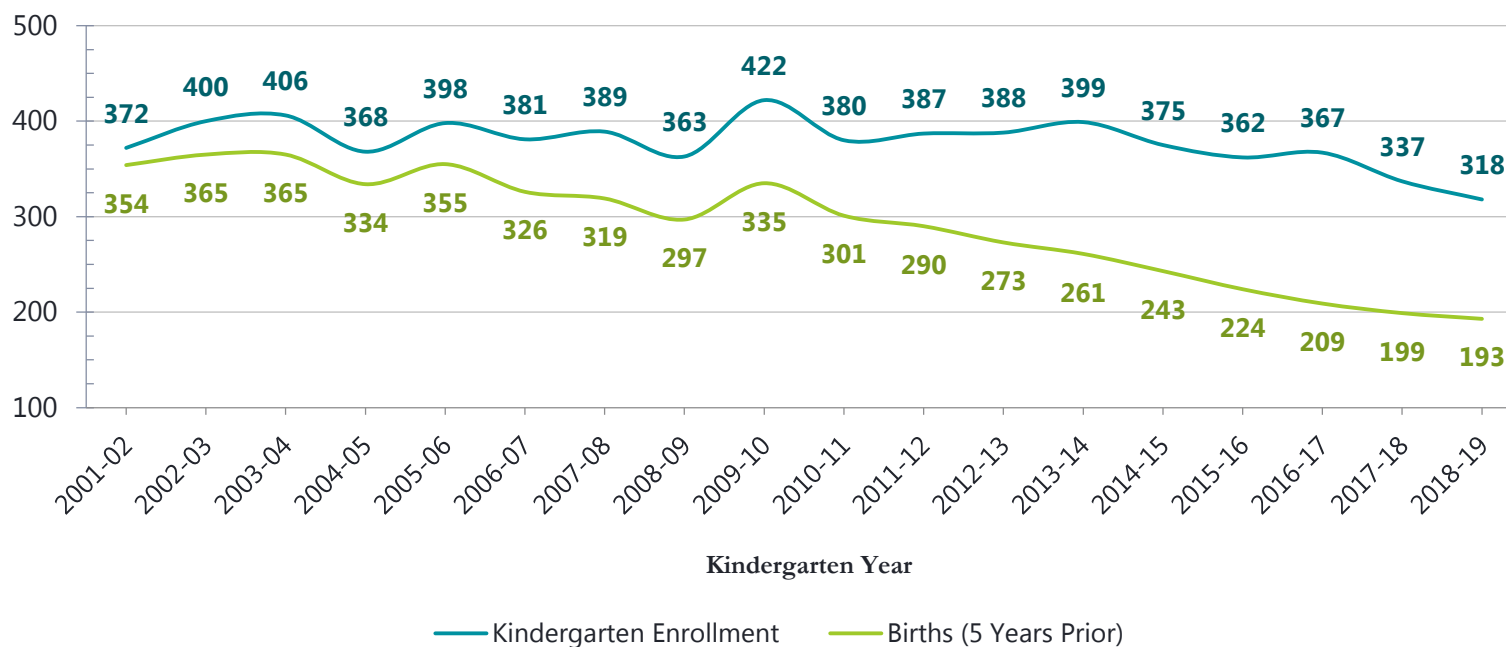
These projections are predicated on the following assumptions:

- The district boundaries for each of the schools and primary placement of Avalon Darien in Tokeneke will not change during the projected time horizon;
- Full-day kindergarten will remain in place;
- There will not be significant changes to deployment of pre-kindergarten programs beyond the planned expansion to approximately 90 students;
- Recent private school enrollment trends will remain stable;
- Trends in children attending a school outside of their designated home attendance zone will not change
- Housing and employment assumptions at the districtwide level will prove accurate
- Estimated housing multipliers for future housing developments hold true



Birth-Kindergarten Ratios

Kindergarten Enrollments Compared to Births Five Years Prior



- Increasing disparity between births and kindergarten enrollments indicates in-migration a growing driver of kindergarten enrollment.
 - In-migration of 0-4 year olds has slightly decreased since 2016-17
- Major rental developments (The Heights, Garden Homes and Avalon) have only generated 34 kindergarteners in the past 3 years or 11 per year on average



Overall Persistency Ratios

- High Birth-K ratios supported by demographic and housing data indicate that families are moving to Darien with children ready to enter school

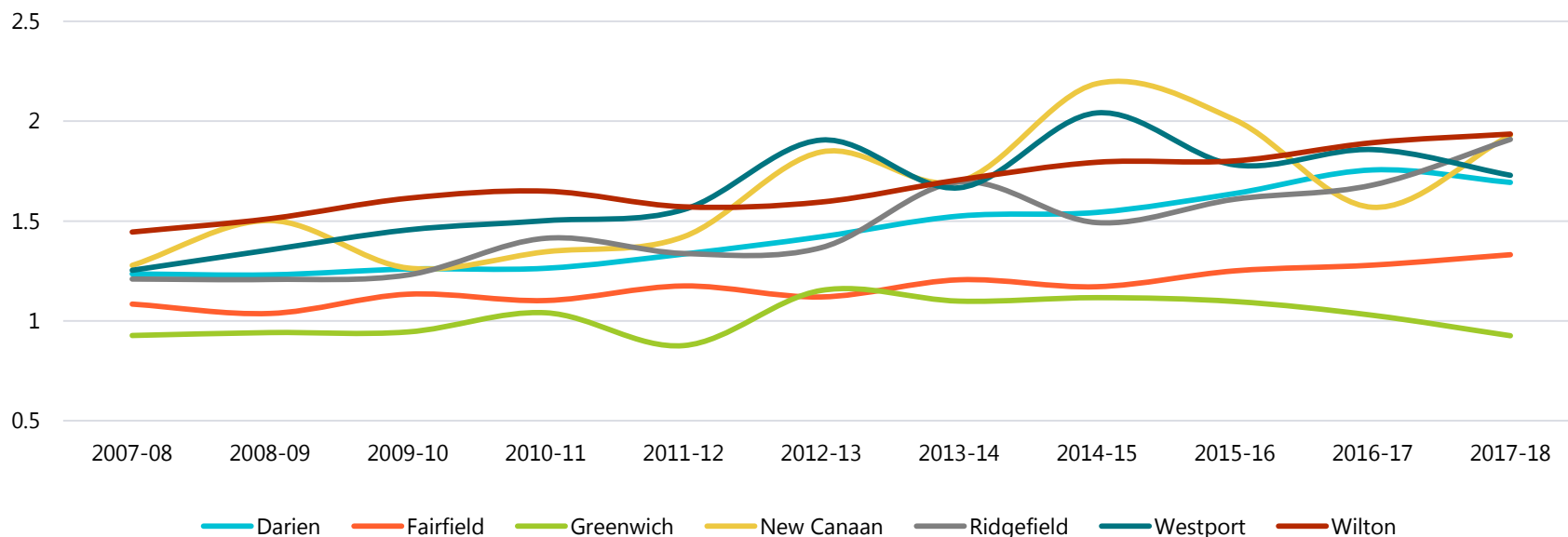
Kindergarten through 12th Grade Persistency Ratios by School Year 2002-2003 to 2018-19															
Year	Birth-K	Adjusted Birth-K	K-1	1-2	2-3	3-4	4-5	5-6	6-7	7-8	8-9	9-10	10-11	11-12	Est. of Migration
2002-03	1.0959	1.1050	1.0484	1.0335	1.0249	1.0305	0.9600	1.0161	0.9837	0.9821	0.8900	0.9595	0.9688	0.9949	0.15%
2003-04	1.1123	1.1123	0.9925	0.9846	1.0027	0.9811	0.9892	1.0096	0.9762	0.9735	0.9164	0.9537	0.9812	1.0040	-1.14%
2004-05	1.1018	1.0729	1.0468	1.0126	1.0286	0.9730	1.0248	1.0190	1.0222	0.9973	0.8878	0.9603	0.9636	0.9904	1.06%
2005-06	1.1211	1.1404	1.0435	0.9529	0.9602	0.9873	0.9612	0.9892	0.9867	0.9783	0.9457	0.9885	0.9669	1.0126	-2.29%
2006-07	1.1687	1.1373	1.0025	0.9870	0.9827	0.9767	0.9949	1.0173	1.0163	1.0027	0.9937	0.9425	0.9806	1.0214	-0.22%
2007-08	1.2351	1.2274	0.9790	0.9925	0.9815	0.9899	0.9947	1.0026	1.0085	0.9947	0.8922	0.9521	0.9360	0.9960	-0.48%
2008-09	1.2305	1.2020	1.0127	0.9946	1.0303	0.9812	0.9898	1.0427	0.9923	0.9972	0.9194	0.9758	0.9295	0.9870	0.57%
2009-10	1.2597	1.3065	0.9780	0.9749	0.9892	0.9608	0.9836	1.0205	0.9744	0.9793	0.9634	0.9444	1.0031	1.0289	-1.56%
2010-11	1.2633	1.2186	0.9976	1.0028	0.9486	1.0191	0.9796	1.0501	1.0000	1.0079	0.9524	0.9708	0.9690	0.9938	0.00%
2011-12	1.3345	1.3208	0.9736	1.0048	1.0056	0.9946	0.9652	1.0234	0.9894	0.9849	0.9063	0.9667	0.9518	1.0096	-0.62%
2012-13	1.4212	1.3957	1.0155	1.0054	1.0236	1.0419	0.9809	1.0471	0.9924	0.9973	0.8954	0.9626	0.9713	1.0095	1.36%
2013-14	1.5249	1.5019	0.9871	0.9873	1.0027	0.9931	1.0000	1.0167	1.0079	0.9846	0.9409	0.9858	0.9940	1.0237	0.04%
2014-15	1.5432	1.5121	1.0201	0.9922	1.0103	0.9866	0.9512	1.0241	1.0301	0.9738	0.9688	0.9629	0.9711	1.0210	-0.52%
2015-16	1.6380	1.5877	0.9920	0.9901	1.0000	0.9694	0.9782	1.0220	0.9817	1.0000	0.9218	0.9462	0.9911	1.0298	-0.78%
2016-17	1.7560	1.7230	0.9779	1.0054	0.9950	0.9947	0.9526	1.0000	0.9761	0.9947	0.9310	0.9883	0.9773	1.0090	-1.47%
2017-18	1.6935	1.6683	0.9891	1.0113	0.9813	1.0050	1.0026	1.0249	0.9972	0.9828	0.9223	1.0199	1.0178	1.0145	-0.13%
2018-19	1.6477	1.6308	1.0030	1.0083	0.9777	0.9537	0.9776	1.0132	0.9892	0.9777	0.9526	0.9826	1.0000	1.0000	-1.83%
Long Term Avg.	1.362		1.003	0.996	0.997	0.991	0.982	1.020	0.996	0.989	0.929	0.968	0.975	1.009	
5-Year Avg. (Low)	1.656		0.996	1.001	0.993	0.982	0.972	1.017	0.995	0.986	0.939	0.980	0.991	1.015	
4-Year Avg.	1.684		0.991	1.004	0.989	0.981	0.978	1.015	0.986	0.989	0.932	0.984	0.997	1.013	
3-Year Avg. (Mid)	1.699		0.990	1.008	0.985	0.984	0.978	1.013	0.988	0.985	0.935	0.997	0.998	1.008	
3-Year Wgt Avg. (High)	1.681		0.994	1.009	0.982	0.978	0.982	1.015	0.990	0.982	0.939	0.996	1.002	1.006	
2-Year Avg	1.671		0.996	1.010	0.980	0.979	0.990	1.019	0.993	0.980	0.937	1.001	1.009	1.007	



Birth-Kindergarten Context

- Rising Birth-K ratio is a recent Fairfield County phenomenon
- Appears to be having a particular impact on those communities whose housing sales weathered the Great Recession the best – Darien, New Canaan, Westport and Wilton
- Kindergarten enrollments have not declined as rapidly as birth data would suggest – in-migration an increasing driver of Kindergarten enrollment

**Fairfield County School District Birth-K Ratios:
(2007-08 to 2017-18)**

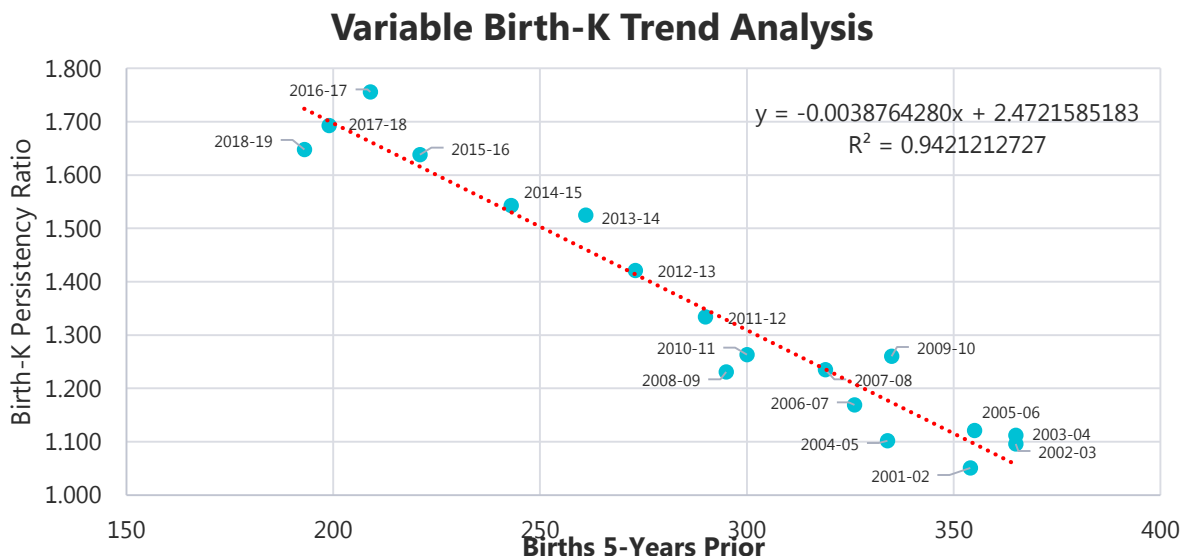




Persistency Ratios – Variable Birth-K

- Reverted to cohort-survival method, but adjusted birth-K to reflect expectation of continued disparity between births and kindergarten enrollments. Large birth cohorts tend to produce a lower Birth-K and smaller birth cohorts tend to produce a higher Birth-K
- Birth-K was determined per year by size of birth cohort, according to the best fit line of births compared to Birth-K ratio five years later

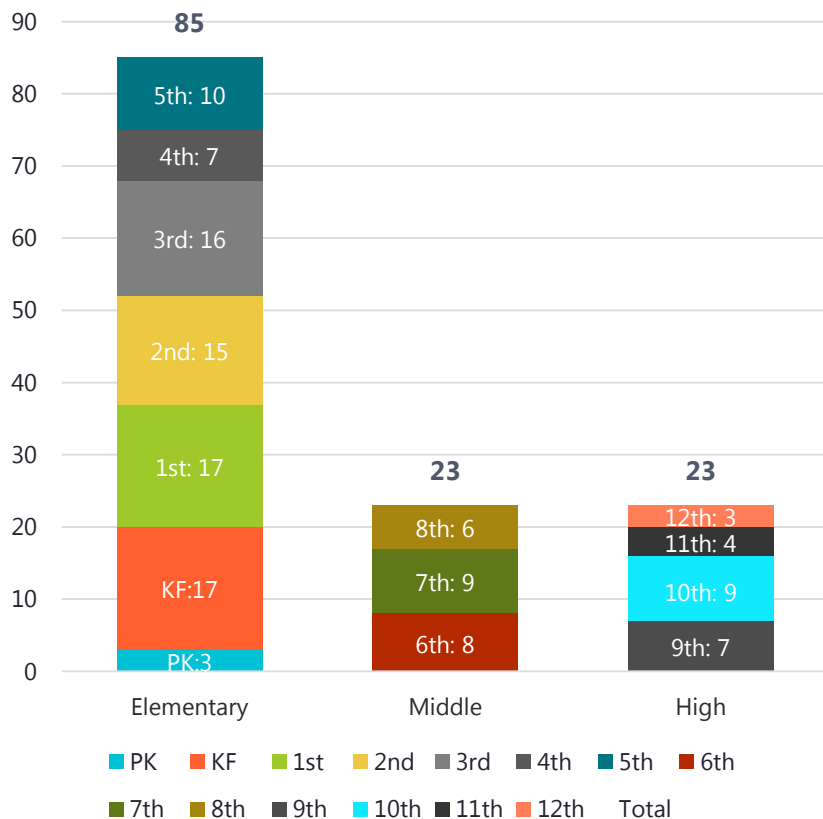
Kindergartners (Y) = The coefficient of the best fit line (-0.004) multiplied by the number of projected births (X) plus the intercept (2.472)



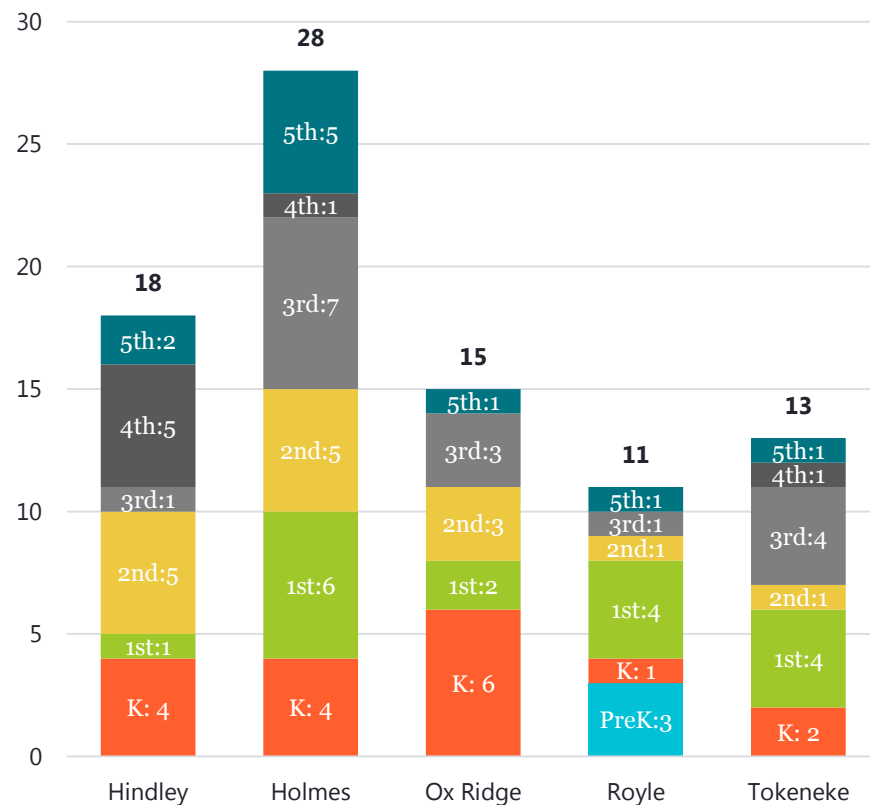


Enrollments from Sales

2018-19 PK-12 Students Generated from Housing Sales, Jan. to Sept. 2018



Elementary Students Generated from Housing Sales by District, Jan-Sept 2018

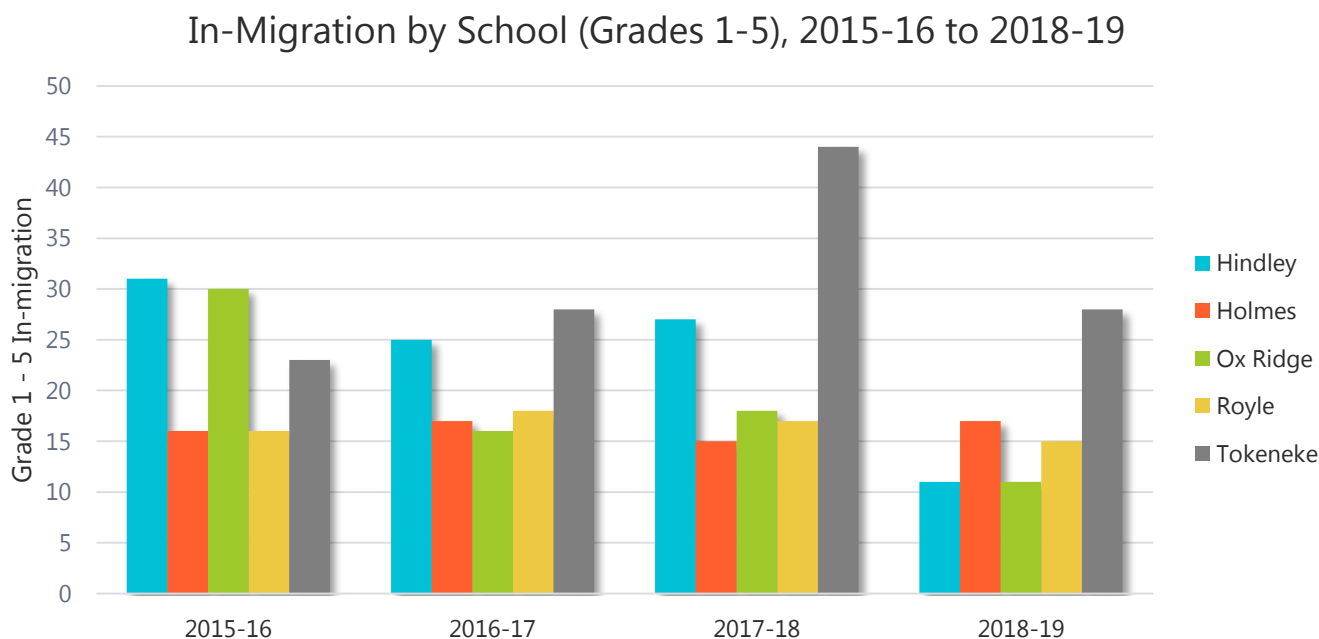


- Average district-wide student multiplier from Jan-Sept sales is 0.62 – varies widely at the elementary school level from year to year



Elementary In-Migration

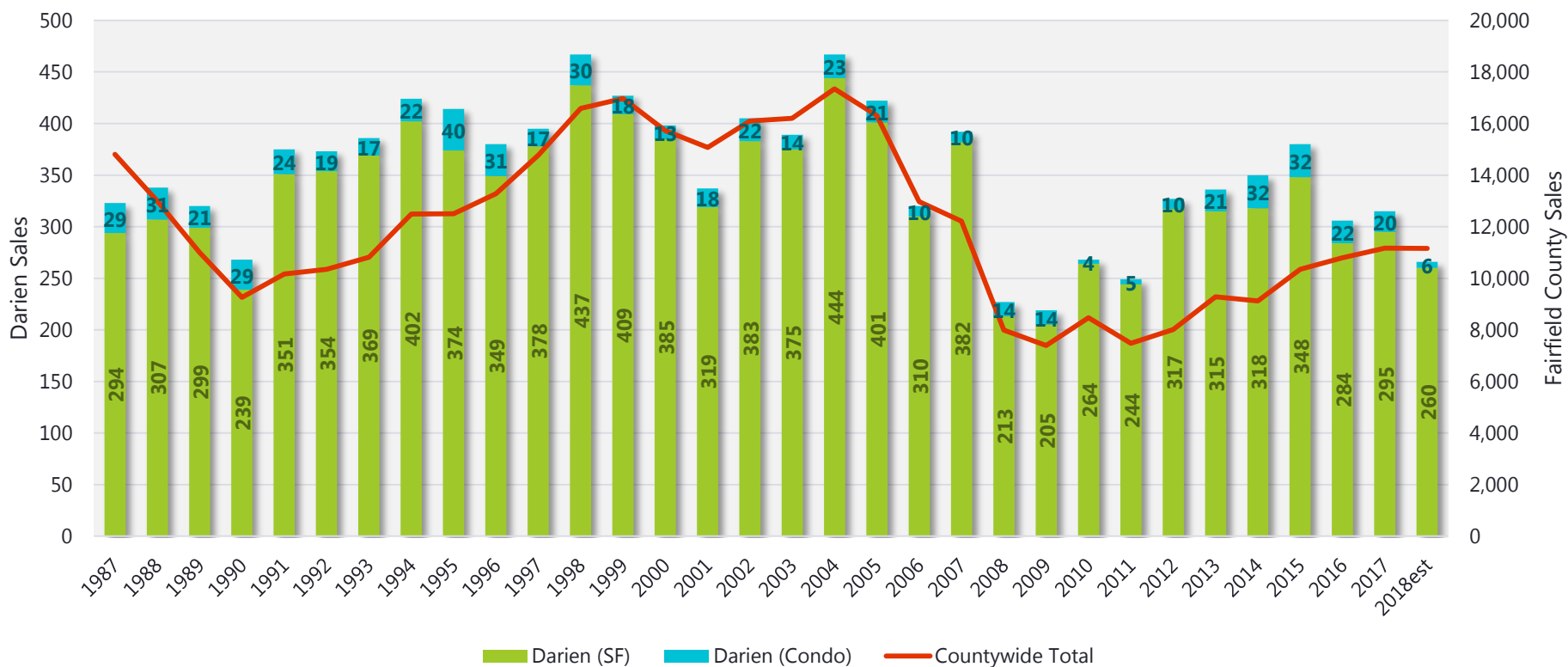
- Highest levels of in-migration in grades 1-5 in Tokeneke (Avalon apartments), lowest in Ox Ridge and Hindley
- Rentals housing and or transfers from private schools account for difference between total in-migration and in-migration from sales





Housing Sales

Darien Housing Sales, 1987 - 2018est

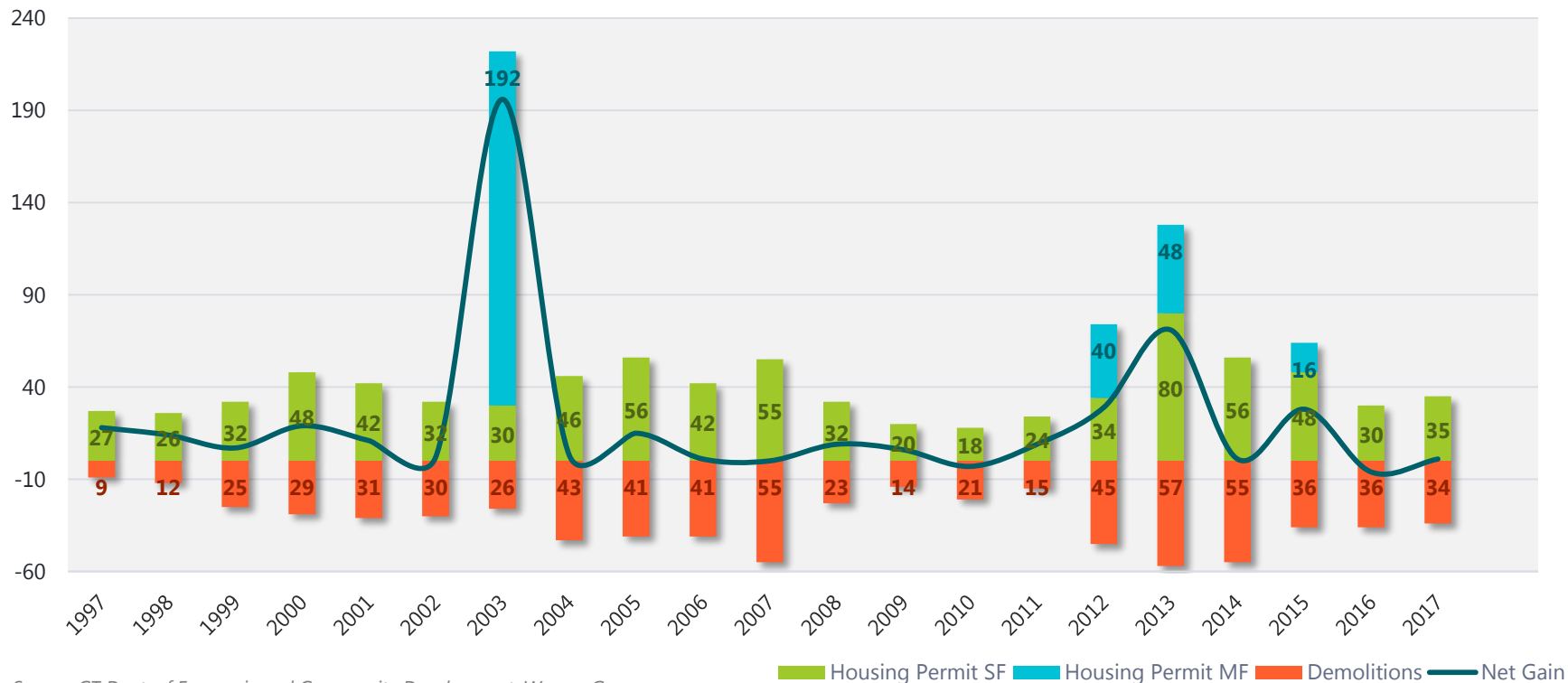


- Darien housing sales have rebounded from recession, but have declined the last three years. 2018 is estimated to resemble 2010 housing sales based on January through September YTD



Housing Permits

Darien Housing Permits and Demolitions, 1997 - 2017



- Large jumps in net gain are due to years with high multi-family (MF) housing construction
- Single Family permits generally cancelled out with demolition permits. Trend of “tear down rebuilds” continues



Students Generated From Housing

Current Housing Multipliers						
Development Name	3-Year Average Enrollment	Total Units	Total Students Generated Per Unit	Students Grades K-5 Generated Per Unit	Students Grades 6-8 Generated Per Unit	Students Grades 9-12 Generated Per Unit
Avalon	94	189	0.47	0.22	0.07	0.18
The Heights at Darien	52	106	0.49	0.26	0.13	0.09
Total	148	295	0.48	0.24	0.09	0.15

- Housing multipliers for existing developments were used to determine the students generated from future housing developments, by unit and by grade grouping



Students Generated From Future Housing

Estimated Students Generated From Future Development

Development Name	Total Units	Total Students Generated Per Unit	Students Grades K-5 Generated Per Unit	Students Grades 6-8 Generated Per Unit	Students Grades 9-12 Generated Per Unit
Palmer Family Development (Noroton Heights Shopping Center)	59	28	14	5	9
Corbin Block Redevelopment (Proposed)	116	56	28	11	17
Commons at Noroton Heights (Federal Realty)	122	58	29	11	18
Total (Approved)	181	86	43	16	27

**Corbin Block Redevelopment is not yet approved and is estimated to be completed in 2021 while the other two developments are approved and estimated to be completed in 2021*

- Palmer Family Development and Commons at Noroton Heights are both approved and estimated to be completed by 2021. Housing multipliers for these projects are incorporated in the projections
- Corbin Block Redevelopment is not yet approved. Housing multipliers for this project is not incorporated in the projections – project should be monitored closely over the coming months

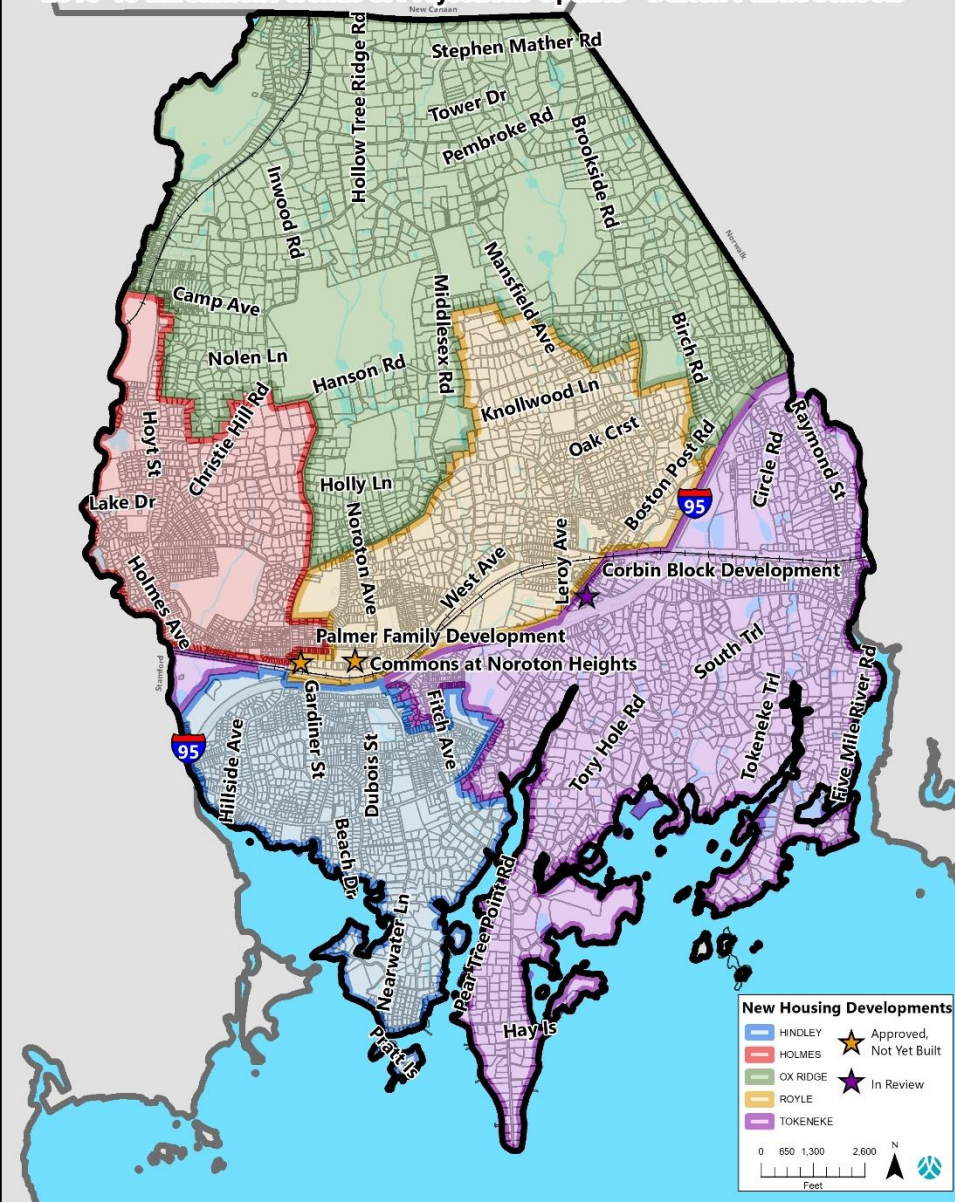


Students Generated From Future Housing

Palmer Family Development and Commons at Noroton Heights in the Royle Elementary School District

Corbin Block Development is currently in review but has the potential to impact future Tokeneke enrollment

2018-19 Enrollment Trends & Projections Update - Darien Public Schools





Projections Assumptions

- Three sets of projections based on varying economic, birth and persistency ratio assumptions:
 - Low-growth: slowing of housing market and economy Medium-growth: continuation of current trends: slow, steady economic recovery with declining unemployment and uptick in housing market
 - High-growth: accelerated economic recovery with quicker decline in unemployment and uptick in housing market
- No change in current PK enrollment – 90
- No change in current program deployment
- Housing Multipliers for approved developments have been applied to all projection models

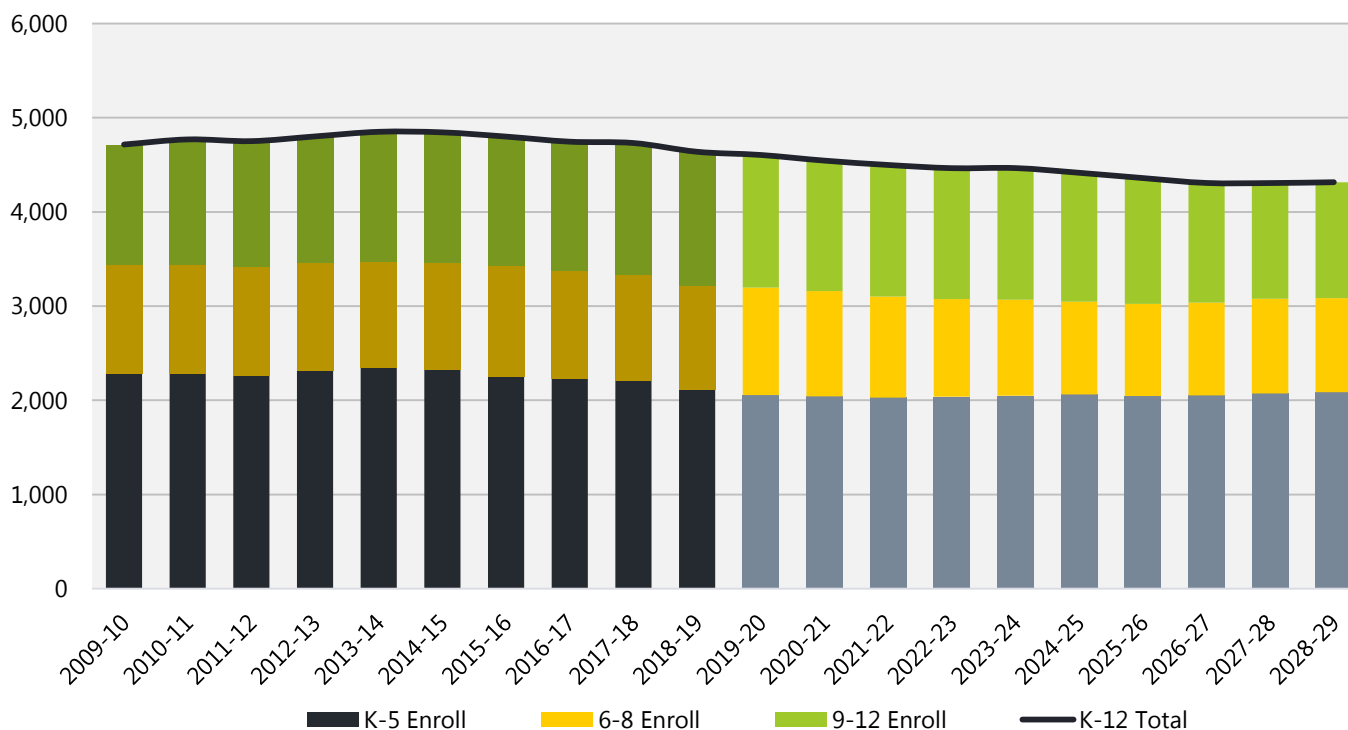
Assumptions			
	Low Growth	Med Growth	High Growth
Annual Births	208 - 199	207 - 228	210 - 275
County Unemployment	3.9% - 4.9%	3.7%	3.6% - 3.4%
Darien Unemployment (Y-1)	3.6% - 4.3%	3.6%	3.6% - 2.9%
Home Sales	268 – 275	278 – 325	288 - 375



District Projections - Medium

- **Demographic & Housing Conditions align best with Medium growth**
- Projecting slow decline in total enrollment over 10-year horizon (-7%)

**Historic and Projected K-12 Enrollment: 2008-09 to 2028-29
(Medium Projections Model)**





Low Projections

Ten-Year Enrollment Projections (Low with Housing Multipliers)																	
School Year	Birth Year	Births	K	1	2	3	4	5	6	7	8	9	10	11	12	PK	Total K-12
2018-19	2013	193	318	338	366	350	350	393	384	367	350	382	338	358	344	88	4,638
2019-20	2014	219	339	317	338	363	344	340	398	379	361	329	374	335	363	90	4,580
2020-21	2015	210	332	338	317	336	356	334	344	393	373	339	322	371	340	90	4,495
2021-22	2016	200	327	334	342	319	334	350	341	343	390	353	335	322	380	90	4,470
2022-23	2017	215	338	326	335	340	313	325	353	337	338	366	346	332	327	90	4,376
2023-24	2018	190	322	341	330	336	337	308	331	351	334	321	363	347	341	90	4,362
2024-25	2019	208	338	321	341	328	330	329	310	326	346	315	316	360	352	90	4,312
2025-26	2020	205	335	337	321	339	322	322	331	305	321	326	310	313	365	90	4,247
2026-27	2021	203	334	334	337	319	333	314	324	326	301	303	321	307	318	90	4,171
2027-28	2022	201	333	333	334	335	313	325	316	319	321	284	298	318	312	90	4,141
2028-29	2023	199	331	332	333	332	329	305	327	311	314	303	279	295	323	90	4,114

Low Projections	K-12th		K-5th		6th-8th		9th-12th	
School Year	TOTAL	% Change	K-5 Total	% Change	6-8 Total	% Change	9-12 Total	% Change
2018-19	4,638	-2.01%	2,115	-4.13%	1,101	-2.63%	1,422	1.94%
2019-20	4,580	-1.25%	2,041	-3.50%	1,138	3.36%	1,401	-1.48%
2020-21	4,495	-1.86%	2,013	-1.37%	1,110	-2.46%	1,372	-2.07%
2021-22	4,470	-0.56%	2,006	-0.35%	1,074	-3.24%	1,390	1.31%
2022-23	4,376	-2.10%	1,977	-1.45%	1,028	-4.28%	1,371	-1.37%
2023-24	4,362	-0.32%	1,974	-0.15%	1,016	-1.17%	1,372	0.07%
2024-25	4,312	-1.15%	1,987	0.66%	982	-3.35%	1,343	-2.11%
2025-26	4,247	-1.51%	1,976	-0.55%	957	-2.55%	1,314	-2.16%
2026-27	4,171	-1.79%	1,971	-0.25%	951	-0.63%	1,249	-4.95%
2027-28	4,141	-0.72%	1,973	0.10%	956	0.53%	1,212	-2.96%
2028-29	4,114	-0.65%	1,962	-0.56%	952	-0.42%	1,200	-0.99%

1st 5-YR Percent Change

-6.0%

-6.7%

-7.7%

-3.5%

2nd 5-YR Percent Change

-5.7%

-0.6%

-6.3%

-12.5%

10-YR Percent Change

-11.3%

-7.2%

-13.5%

-15.6%



Medium Projections

Ten-Year Enrollment Projections (Medium with Housing Multipliers)																	
School Year	Birth Year	Births	K	1	2	3	4	5	6	7	8	9	10	11	12	PK	Total K-12
2018-19	2013	193	318	338	366	350	350	393	384	367	350	382	338	358	344	88	4,638
2019-20	2014	219	355	316	341	359	342	344	399	379	363	327	381	337	361	90	4,604
2020-21	2015	210	348	353	319	335	351	336	349	393	375	339	326	380	340	90	4,544
2021-22	2016	200	342	349	360	317	332	349	344	347	392	354	341	328	386	90	4,541
2022-23	2017	215	355	340	353	354	310	326	353	339	343	367	353	340	331	90	4,464
2023-24	2018	190	337	357	347	350	349	308	333	350	337	324	370	356	347	90	4,465
2024-25	2019	194	341	335	360	341	342	344	311	327	346	316	324	369	359	90	4,415
2025-26	2020	198	345	339	338	354	334	337	347	306	323	325	316	323	372	90	4,359
2026-27	2021	218	362	343	342	332	346	329	340	341	303	303	325	315	326	90	4,307
2027-28	2022	223	366	360	346	336	325	341	332	334	337	285	303	324	317	90	4,306
2028-29	2023	228	369	364	363	340	329	320	344	326	330	316	285	302	327	90	4,315

Medium Projections	K-12th		K-5th		6th-8th		9th-12th	
School Year	TOTAL	% Change	K-5 Total	% Change	6-8 Total	% Change	9-12 Total	% Change
2018-19	4,638	-2.01%	2,115	-4.13%	1,101	-2.63%	1,422	1.94%
2019-20	4,604	-0.73%	2,057	-2.74%	1,141	3.63%	1,406	-1.13%
2020-21	4,544	-1.30%	2,042	-0.73%	1,117	-2.10%	1,385	-1.49%
2021-22	4,541	-0.07%	2,049	0.34%	1,083	-3.04%	1,409	1.73%
2022-23	4,464	-1.70%	2,038	-0.54%	1,035	-4.43%	1,391	-1.28%
2023-24	4,465	0.02%	2,048	0.49%	1,020	-1.45%	1,397	0.43%
2024-25	4,415	-1.12%	2,063	0.73%	984	-3.53%	1,368	-2.08%
2025-26	4,359	-1.27%	2,047	-0.78%	976	-0.81%	1,336	-2.34%
2026-27	4,307	-1.19%	2,054	0.34%	984	0.82%	1,269	-5.01%
2027-28	4,306	-0.02%	2,074	0.97%	1,003	1.93%	1,229	-3.15%
2028-29	4,315	0.21%	2,085	0.53%	1,000	-0.30%	1,230	0.08%

1st 5-YR Percent Change
2nd 5-YR Percent Change
10-YR Percent Change

-3.7%
-3.4%
-7.0%

-3.2%
1.8%
-1.4%

-7.4%
-2.0%
-9.2%

-1.8%
-12.0%
-13.5%



High Projections

Ten-Year Enrollment Projections (High with Multipliers)																	
School Year	Birth Year	Births	K	1	2	3	4	5	6	7	8	9	10	11	12	PK	Total K-12
2018-19	2013	193	318	338	366	350	350	393	384	367	350	382	338	358	344	88	4,638
2019-20	2014	219	383	317	341	359	343	347	400	382	362	329	380	339	360	90	4,642
2020-21	2015	210	374	381	320	334	351	340	353	398	377	340	328	381	341	90	4,618
2021-22	2016	200	367	376	389	318	331	351	349	354	395	357	342	332	386	90	4,647
2022-23	2017	215	381	366	381	381	311	328	356	347	349	371	356	343	334	90	4,604
2023-24	2018	190	360	383	374	376	376	312	336	356	344	331	374	361	349	90	4,632
2024-25	2019	210	381	359	387	367	368	373	315	333	351	324	331	375	363	90	4,627
2025-26	2020	226	396	380	363	379	359	365	377	312	328	331	324	332	377	90	4,623
2026-27	2021	243	408	394	384	356	371	356	369	374	308	309	331	325	334	90	4,619
2027-28	2022	259	419	406	398	376	349	368	360	366	369	291	309	332	327	90	4,670
2028-29	2023	275	428	417	410	390	368	347	372	357	361	348	291	310	334	90	4,733

High Projections	K-12th		K-5th		6th-8th		9th-12th	
School Year	TOTAL	% Change	K-5 Total	% Change	6-8 Total	% Change	9-12 Total	% Change
2018-19	4,638	-2.01%	2,115	-4.13%	1,101	-2.63%	1,422	1.94%
2019-20	4,642	0.09%	2,090	-1.18%	1,144	3.91%	1,408	-0.98%
2020-21	4,618	-0.52%	2,100	0.48%	1,128	-1.40%	1,390	-1.28%
2021-22	4,647	0.63%	2,132	1.52%	1,098	-2.66%	1,417	1.94%
2022-23	4,604	-0.93%	2,148	0.75%	1,052	-4.19%	1,404	-0.92%
2023-24	4,632	0.61%	2,181	1.54%	1,036	-1.52%	1,415	0.78%
2024-25	4,627	-0.11%	2,235	2.48%	999	-3.57%	1,393	-1.55%
2025-26	4,623	-0.09%	2,242	0.31%	1,017	1.80%	1,364	-2.08%
2026-27	4,619	-0.09%	2,269	1.20%	1,051	3.34%	1,299	-4.77%
2027-28	4,670	1.10%	2,316	2.07%	1,095	4.19%	1,259	-3.08%
2028-29	4,733	1.35%	2,360	1.90%	1,090	-0.46%	1,283	1.91%

1st 5-YR Percent Change

-0.1%

3.1%

-5.9%

-0.5%

2nd 5-YR Percent Change

2.2%

8.2%

5.2%

-9.3%

10-YR Percent Change

2.0%

11.6%

-1.0%

-9.8%



District Projection - Summary

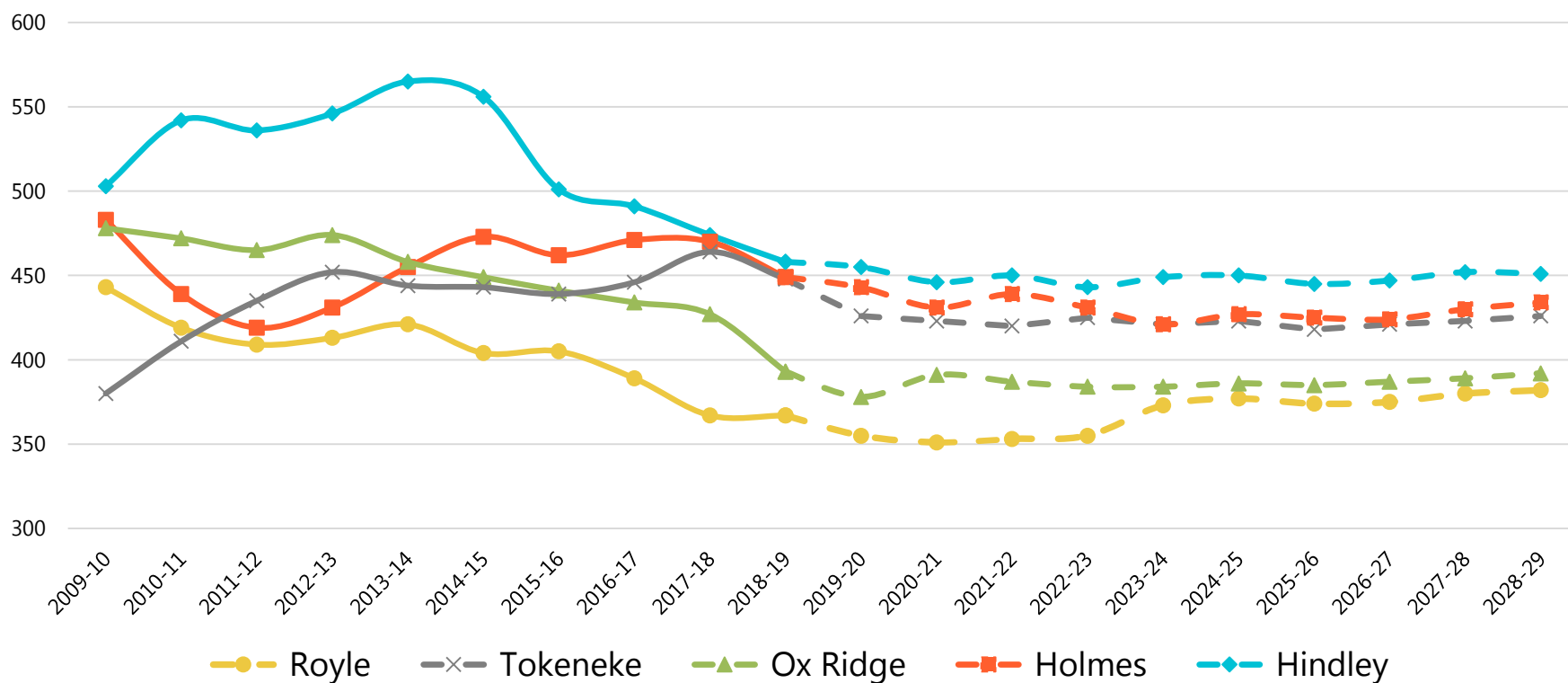
- Next year's projected enrollment:
 - Elementary school decreases 2.7% largely due to the exit of a large 5th grade class
 - Middle school increases 3.6% due to large incoming 6th grade class
 - High school decreases 1.1 %
- Over the next three years:
 - Elementary school projected to decrease by 3.1% in total
 - Middle school projected to decrease by 1.6% in total
 - High school projected to decrease by 0.9% in total
- Beyond five years
 - Total K-5 enrollment is projected to remain stable with little year to year fluctuation
 - Middle school enrollment is projected to decline at the beginning of the five year window but rebound in 2025-26
 - High school enrollment is projected to steadily decline beginning in 2024-25



Elementary (Elem) School Projections

- Medium projection was selected as most likely to occur

**Medium Enrollment Projections (K-5) Enrollment by School
Darien Public Schools, 2009-10 to 2028-29**





Elem School Projections (Medium)

Darien Public Schools Elementary School Enrollment Projections 2019-20							
School	K	1	2	3	4	5	K-5th
Hindley	78	76	66	81	70	84	455
Holmes	78	65	79	83	60	78	443
Ox Ridge	66	56	64	73	68	51	378
Royle	65	51	60	52	71	56	355
Tokeneke	68	68	72	70	73	75	426
TOTAL	355	316	341	359	342	344	2057

Darien Public Schools Elementary School Enrollment Projections 2020-21							
School	K	1	2	3	4	5	K-5th
Hindley	77	76	79	66	79	69	446
Holmes	75	77	64	76	79	60	431
Ox Ridge	65	65	58	65	72	66	391
Royle	63	62	48	57	51	70	351
Tokeneke	68	73	70	71	70	71	423
TOTAL	348	353	319	335	351	336	2042

Darien Public Schools Elementary School Enrollment Projections 2021-22							
School	K	1	2	3	4	5	K-5th
Hindley	76	75	78	79	64	78	450
Holmes	74	75	78	61	73	78	439
Ox Ridge	63	64	67	59	64	70	387
Royle	64	63	62	50	60	54	353
Tokeneke	65	72	75	68	71	69	420
TOTAL	342	349	360	317	332	349	2049

Darien Public Schools Elementary School Enrollment Projections 2022-23							
School	K	1	2	3	4	5	K-5th
Hindley	77	74	76	77	76	63	443
Holmes	76	74	75	74	59	73	431
Ox Ridge	66	62	67	69	58	62	384
Royle	67	61	60	60	49	58	355
Tokeneke	69	69	75	74	68	70	425
TOTAL	355	340	353	354	310	326	2038

Darien Public Schools Elementary School Enrollment Projections 2023-24							
School	K	1	2	3	4	5	K-5th
Hindley	72	75	75	76	75	76	449
Holmes	72	76	73	71	71	58	421
Ox Ridge	62	65	65	68	68	56	384
Royle	67	68	62	62	62	52	373
Tokeneke	64	73	72	73	73	66	421
TOTAL	337	357	347	350	349	308	2048

Darien Public Schools Elementary School Enrollment Projections 2024-25							
School	K	1	2	3	4	5	K-5th
Hindley	74	71	78	76	75	76	450
Holmes	72	72	76	69	68	70	427
Ox Ridge	62	60	67	66	66	65	386
Royle	68	64	64	60	60	61	377
Tokeneke	65	68	75	70	73	72	423
TOTAL	341	335	360	341	342	344	2063

Darien Public Schools Elementary School Enrollment Projections 2025-26							
School	K	1	2	3	4	5	K-5th
Hindley	75	72	73	77	74	74	445
Holmes	74	73	71	73	66	68	425
Ox Ridge	63	61	63	68	65	65	385
Royle	68	65	61	62	59	59	374
Tokeneke	65	68	70	74	70	71	418
TOTAL	345	339	338	354	334	337	2047

Darien Public Schools Elementary School Enrollment Projections 2026-27							
School	K	1	2	3	4	5	K-5th
Hindley	79	73	74	73	76	72	447
Holmes	77	73	72	67	69	66	424
Ox Ridge	66	62	64	64	67	64	387
Royle	71	66	61	59	60	58	375
Tokeneke	69	69	71	69	74	69	421
TOTAL	362	343	342	332	346	329	2054

Darien Public Schools Elementary School Enrollment Projections 2027-28							
School	K	1	2	3	4	5	K-5th
Hindley	80	77	75	74	71	75	452
Holmes	78	77	73	68	65	69	430
Ox Ridge	67	65	64	65	63	65	389
Royle	72	68	62	60	58	60	380
Tokeneke	69	73	72	69	68	72	423
TOTAL	366	360	346	336	325	341	2074

Darien Public Schools Elementary School Enrollment Projections 2028-29							
School	K	1	2	3	4	5	K-5th
Hindley	81	77	78	75	71	69	451
Holmes	79	78	77	69	66	65	434
Ox Ridge	67	66	67	66	64	62	392
Royle	72	69	65	60	59	57	382
Tokeneke	70	74	76	70	69	67	426
TOTAL	369	364	363	340	329	320	2085



Elementary Projections Summary

- Next year's projected enrollment:
 - Ox Ridge and Tokeneke are projected to experience the largest decreases in enrollment, of 3.8 to 4.9% respectively
 - No elementary school projected to experience enrollment increase
- Over the next three years:
 - Tokeneke is projected to have a 6.3% decline in enrollment, the largest decline among all the schools
 - No elementary schools will gain in enrollment
 - The least overall decline in enrollment is projected at Ox Ridge and Hindley Respectively
- Beyond five years
 - All schools begin to level off and rebound during the second five years
 - Hindley is projected to have the least total growth and Holmes is projected to have the most total growth



Questions?