



Nottingham Elementary School

project advisory team

June 02, 2021 3:30pm – 5:30pm

design meeting #7

TEAM



Becky Hagan
Nottingham Elementary School Principal

Travis Stanford
Associate Superintendent for Operations

Max Buja
Director of Planning and Construction

Noel Moreno
Project Manager

Kris Drosche
Project Manager



Brandon Ross
Partner

Melissa Turnbaugh
Partner

Jorge Tiscareño
Design Principal

Daniel De La Garza
Principal / Senior Designer

Philip Stewart
Senior Project Manager

Juan Valdez
Project Manager



PAT TEAM

Campus Principal

Becky Hagan

Assistant Principal

Sherrie Folger

Parents

Tara Cunningham-Baker
Kristin Anderson

Campus Staff

Kelli Atkinson
Sabrina Lay

PTA President

Linda Dang

HOA Representatives

Ysella Kaseman
Peter DallePezze
Cassie McClung

CIT Members

Watson Potter
Wayne Watson
Courie Anderson
Sarah Davidson
Tonya Spell
Megan Kessler
Claire Mercaldo
Payton Kingsley
Sarah Dale
Sabrina Lay
Melanie Marshall
Thomas Debesse
Jeanette Choy
Kelly Borally
Stacey Zubair

Business Representative

James Warren

PAT #7 Meeting AGENDA

5 min	PAT Charge & Process, Project Overview, Schedule, Guiding Principles
15 min	Recap: PAT-#1-PAT#6
20 min	Interior Design Refinements and Updates
20 min	Break Out Group Discussion: Discuss the Overall PAT Process and the Experience
15 min	Site and Floor Plan updates
15 min	Exterior Design Updates
5 min	Next Steps

SUPERINTENDENT PROJECT ADVISORY TEAM (PAT) CHARGE

GOAL

- The goal of the PAT is to ensure that parents, staff and community members have the opportunity to take part in the planning and design of new schools.
- The PAT will meet as needed throughout the project, from initial planning, through design to the start of construction.
- The PAT concludes its work once construction begins.

CHARGE

- Each Project Advisory Team's (PAT) members are charged with **providing input into planning and design development** for their school's new construction or major renovation project in the 2017 Bond Program.
- The PAT members will **serve as communicators** to and from the community during the design phases of the project and participate in discussions that will lead to recommendations.
- Recommendations will not regard standards, programs, policies, and pedagogy.
- These recommendations will be reached through consensus, and be presented to the Board of Trustees.



THOUGHTFUL EXPLORATION



HANDS ON ENGAGEMENT



INFORMED AND COLLABORATIVE DECISION MAKING

OVERALL PROJECT SCOPE

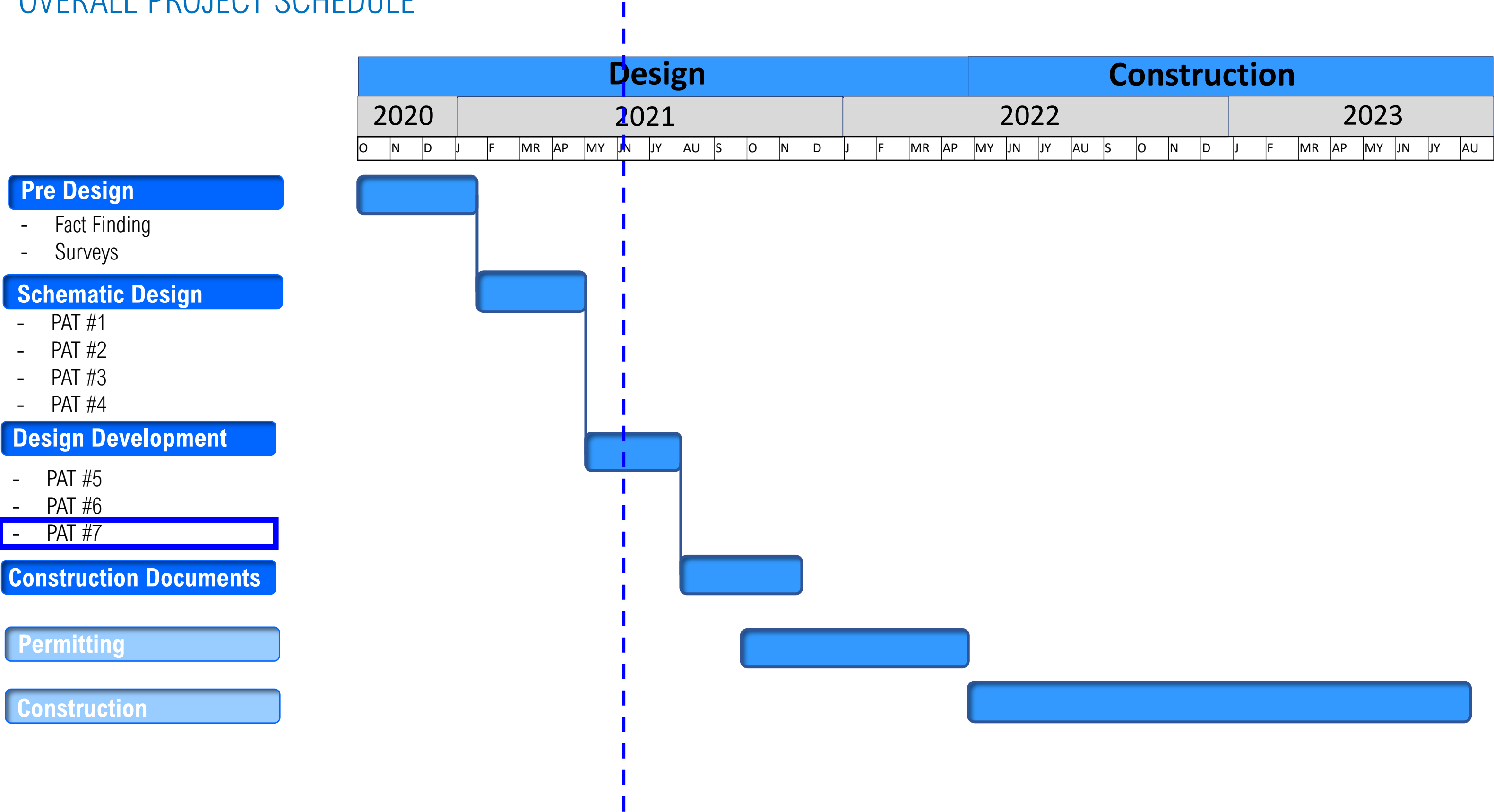
REPLACEMENT NOTTINGHAM ES
min 750 STUDENT CAPACITY
+/- 105,000 GSF

REPLACE SCHOOL ON EXISTING CAMPUS
WHILE EXISTING SCHOOL IS OPERATIONAL

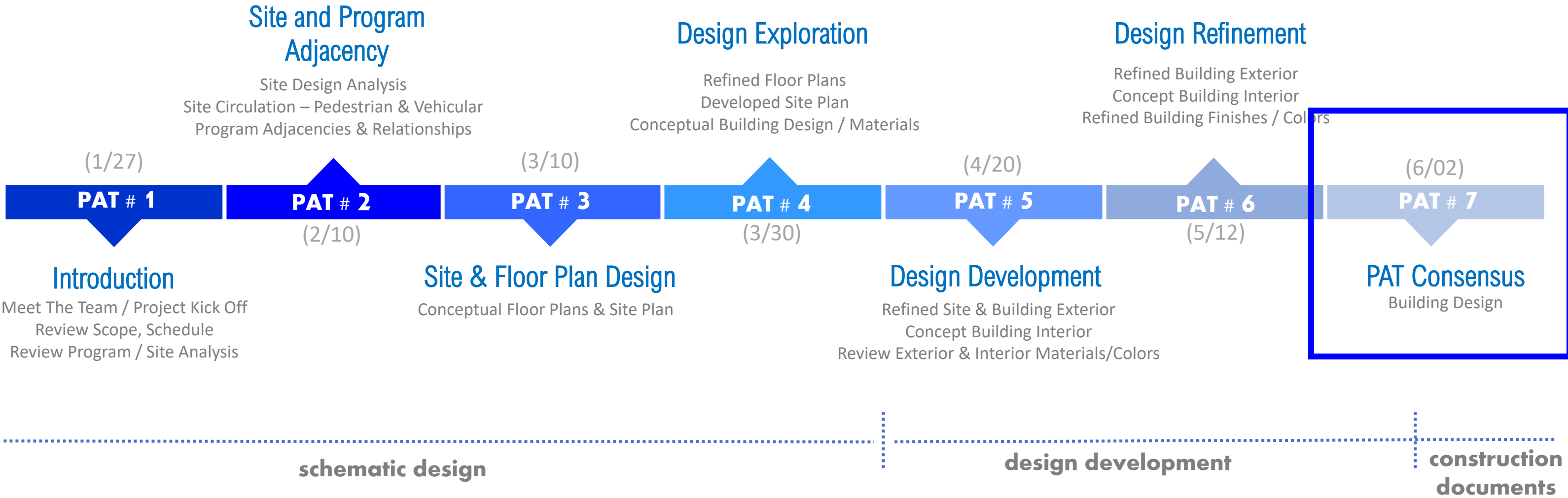
OPENING OF FALL 2023



OVERALL PROJECT SCHEDULE



PAT SCHEDULE DETAIL (meetings 3:30 PM - 5:30 PM)

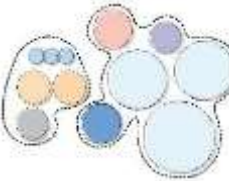


PAT BUILDING DESIGN PROCESS

SITE
FLOOR PLAN
BUILDING



PAT # 1



PAT # 2



PAT # 3



PAT # 4



PAT # 5



PAT # 6



PAT # 7



conceptualize

develop

refine

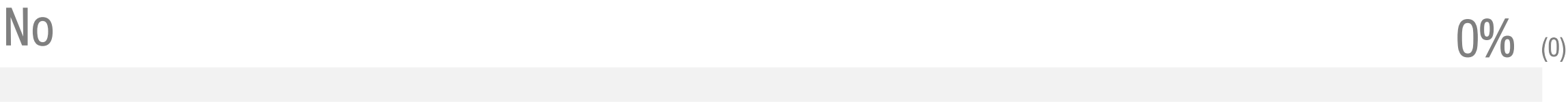
schematic design

design development

PAT #6 RIGHT DIRECTION POLL

Poll Result

Are we heading in the right direction for the New Nottingham Elementary design after PAT#6?

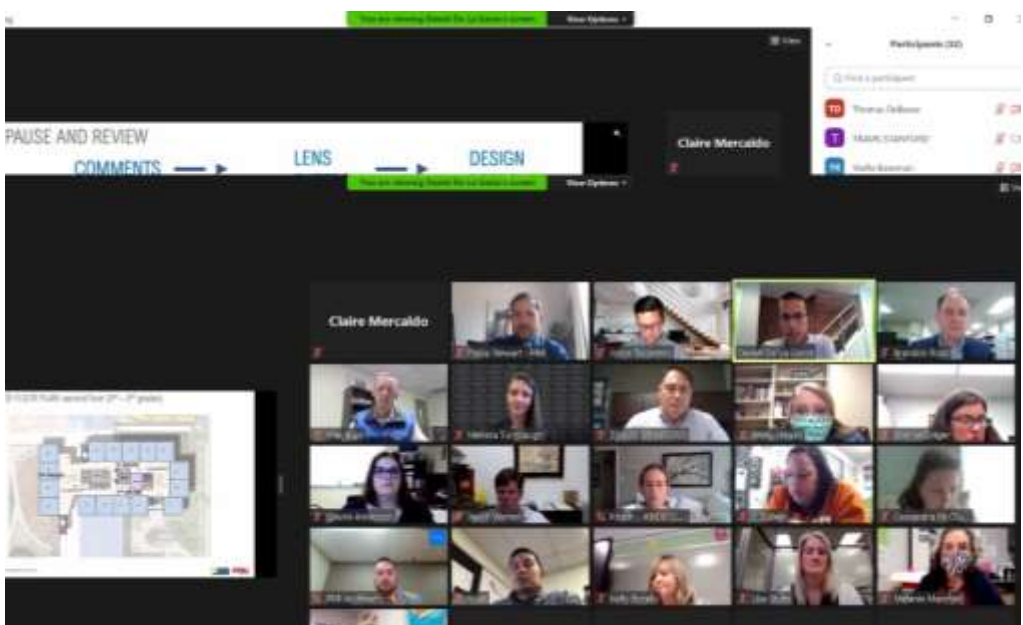
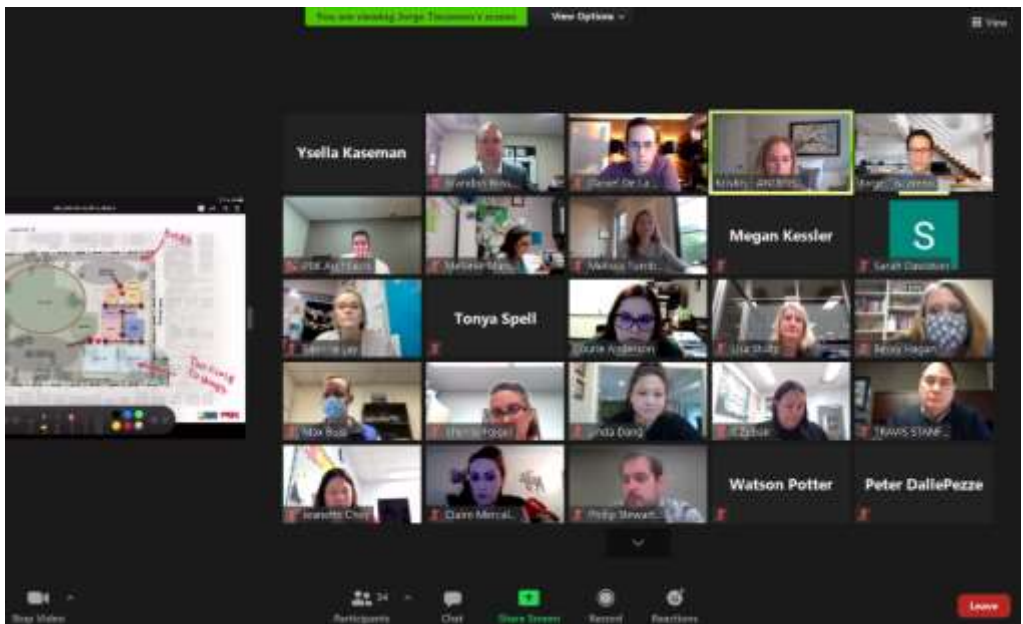


** 7 PAT members did not vote

1. Vote on your preferred Site Program Organization Concept?

Program Diagram #1	(8) 38%
Program Diagram #2	(3) 14%
Program Diagram #3	(1) 5%
Program Diagram #4	(9) 43%

2. Are we heading in the right direction for the New Nottingham Design after PAT#2?



NOTTINGHAM ELEMENTARY SCHOOL



PAT #1-PAT#6 RECAP

All the input and feedback from the PAT has guided us and shaped the design of the New Nottingham Elementary School! THANK YOU!

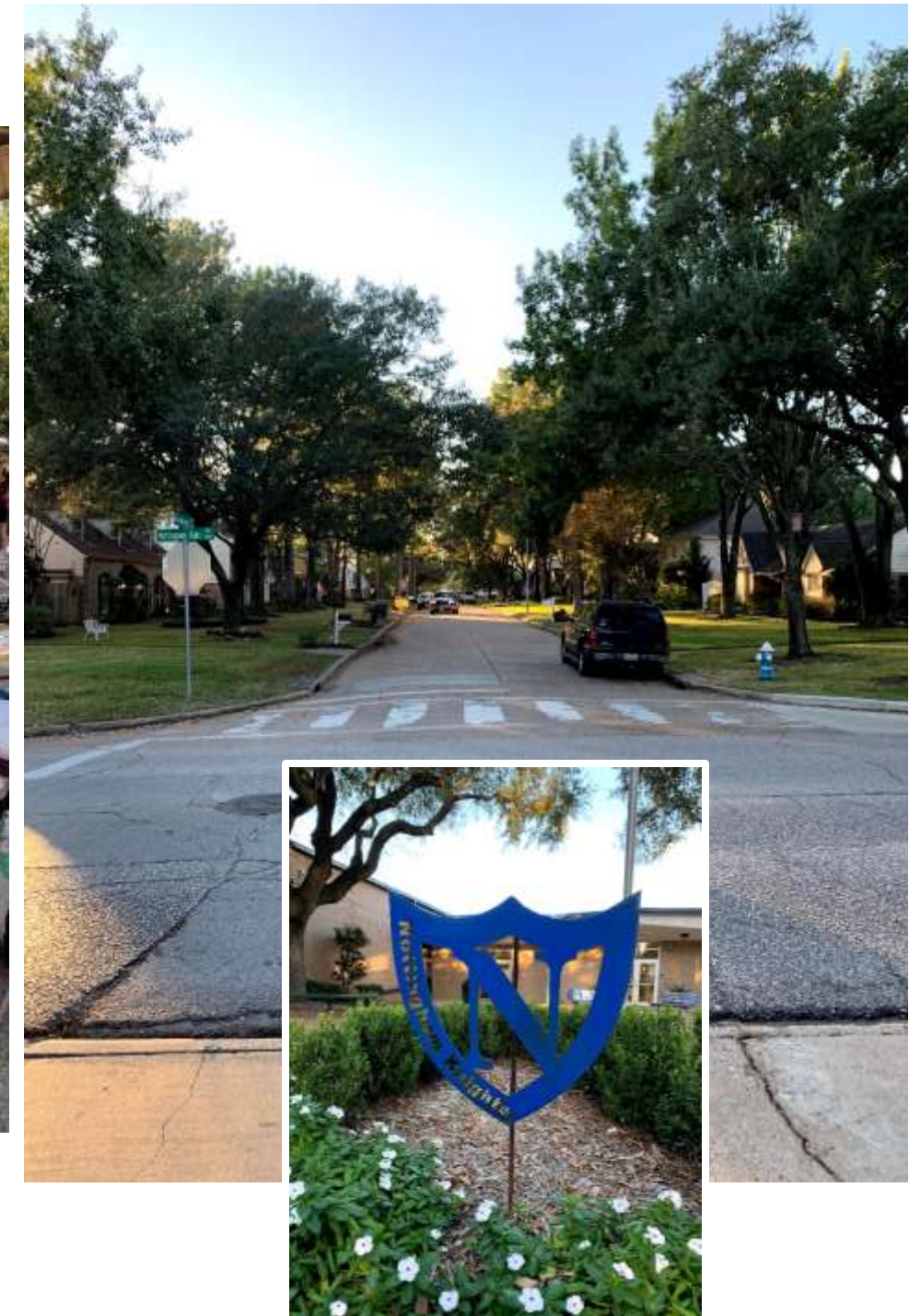
GOALS AND VISION SESSION

Question 1

Describe what makes Nottingham Elementary so special and unique.



What we heard...



Community

Neighborhood

Families

Outdoor Spaces

GOALS AND VISION SESSION

What we heard...

Question 2

What is your **favorite aspect** of the existing campus you don't want to lose?



Outdoor space

Gardens

Nature

Trees

GOALS AND VISION SESSION

What we heard...

Question 3

What is your **least favorite** aspect of the existing campus that needs to change?



Parking

Traffic

Lack of Windows

Dark

GOALS AND VISION SESSION

What we heard...

Question 4

Describe how the New NHE can support family engagement and community activities.



Outdoor Spaces

Flexible

Large Gathering Spaces

GOALS AND VISION SESSION

What we heard...

Question 5

Name **three things** that you think should be a part of a **new learning environment**.



Flexible

Natural Light

Technology

Collaborative

GOALS AND VISION SESSION

What we heard...

Question 6

Describe *your vision* for the New Nottingham Elementary School.



Modern

Bright

Inclusive

Welcoming

PAT GUIDING PRINCIPLES

We take these with us moving forward



PAT SITE AND FLOOR PLAN FEEDBACK AND THEMES:

- PLAY AREA, TRACK, GYM AND COVERED PLAY ALL TOGETHER
- LARGE PARENT LOOP FOR PICK-UP AND DROP-OFF
- LOVE THE SITE PLAN AND FLOW OF OUTDOOR AND COMMUNITY AREAS
- SCIENCE AND ART NEXT TO OUTDOOR AREA
- GROUPING OF THE GRADES WITH 3RD-5TH ON THE SECOND FLOOR
- LIFE SKILLS IS GREAT IN THE SAME WING AS PRE-K / K
- MAXIMIZE DAYLIGHT TO ALL LEARNING AREAS
- LIBRARY AT THE CENTER OF THE SCHOOL



PAT FEEDBACK ON EXTERIOR AND INTERIOR CHARACTER

Exterior Character (3 ✓ and 3 ✗ per person)

Spirit Images 1

01

Entry Plaza Warm Brick and Masonry

02

Sloped Roofs Warm Wood and Glass

03

Bold Entry Warm Brick and Metal

04

Low Entry Warm Modern

Exterior Character (3 ✓ and 3 ✗ per person)

Spirit Images 2

05

Modern Eclectic Metal and Wood

06

Bold Entry Metal and Wood Striking Facade

07

Traditional Bold Entry Brick and Stone

08

Low Entry Metal and Wood Striking Facade

Exterior Character (3 ✓ and 3 ✗ per person)

Spirit Images 3

09

Low Entry Warm Natural Wood

10

Bold Sloping Roofs Metal and Glass

11

Colorful Circular Metal and Glass

12

Modern Boxes Brick and Glass

Interior Character (3 ✓ and 3 ✗ per person)

Spirit Images 1

01

Warm Organic Natural Materials

02

Bright Open Monochrome

03

Colorful Bright Bold

04

Exposed Materials Bright Colors Modern

Interior Character (3 ✓ and 3 ✗ per person)

Spirit Images 2

05

Active Spaces Bright Colors NextGen Furniture

06

Organic Natural Materials Colorful Glass

07

Bold Eclectic Natural Materials

08

Bright Colors Abundant Daylight Modern

Interior Character (3 ✓ and 3 ✗ per person)

Spirit Images 3

09

Open Exposed Materials NextGen Furniture

10

Warm Graphics Active Spaces

11

Bright Colors Natural Materials Abundant Daylight

12

Open Monochrome Modern

PAT FEEDBACK ON EXTERIOR DEVELOPMENT

OPTION 1



PROS:

- LIKE THE CLEAN LINES OF THE FLAT ROOFS
- HIGHER ROOF LINES IN THE CENTER PREFERRED
- MORE GLASS AND NATURAL LIGHT INTO MAIN CORRIDOR/ LIBRARY A PLUS
- LIKE THE SCALE OF THE LIBRARY AREA
- LIKE THE ENTRY EXTENDED OUT

CONS:

- ALL FLAT ROOFS COULD MAKE IT LOOK LIKE A BUSINESS AND LESS LIKE A SCHOOL
- DON'T LIKE FLAT ROOF OF THE BASKETBALL COURT

PAT FEEDBACK ON EXTERIOR DEVELOPMENT

OPTION 2



PROS:

- **GABLES FIT NICER WITH THE NEIGHBORHOOD**
- **GABLES MAKE IT LOOK MORE LIKE A SCHOOL**

CONS:

- **ROOF LINES TOO BROKEN UP IN THE CENTER**
- **ENTRY IS PUSHED BACK FARTHER THAN OPTION 1**
- **LESS NATURAL LIGHT INTO THE LIBRARY/ MAIN CORRIDOR**



OPTION A



OPTION B



PAT#6 RECAP PAT FEEDBACK ON LEARNING PLAZA

1. What is your preferred Learning Plaza concept?



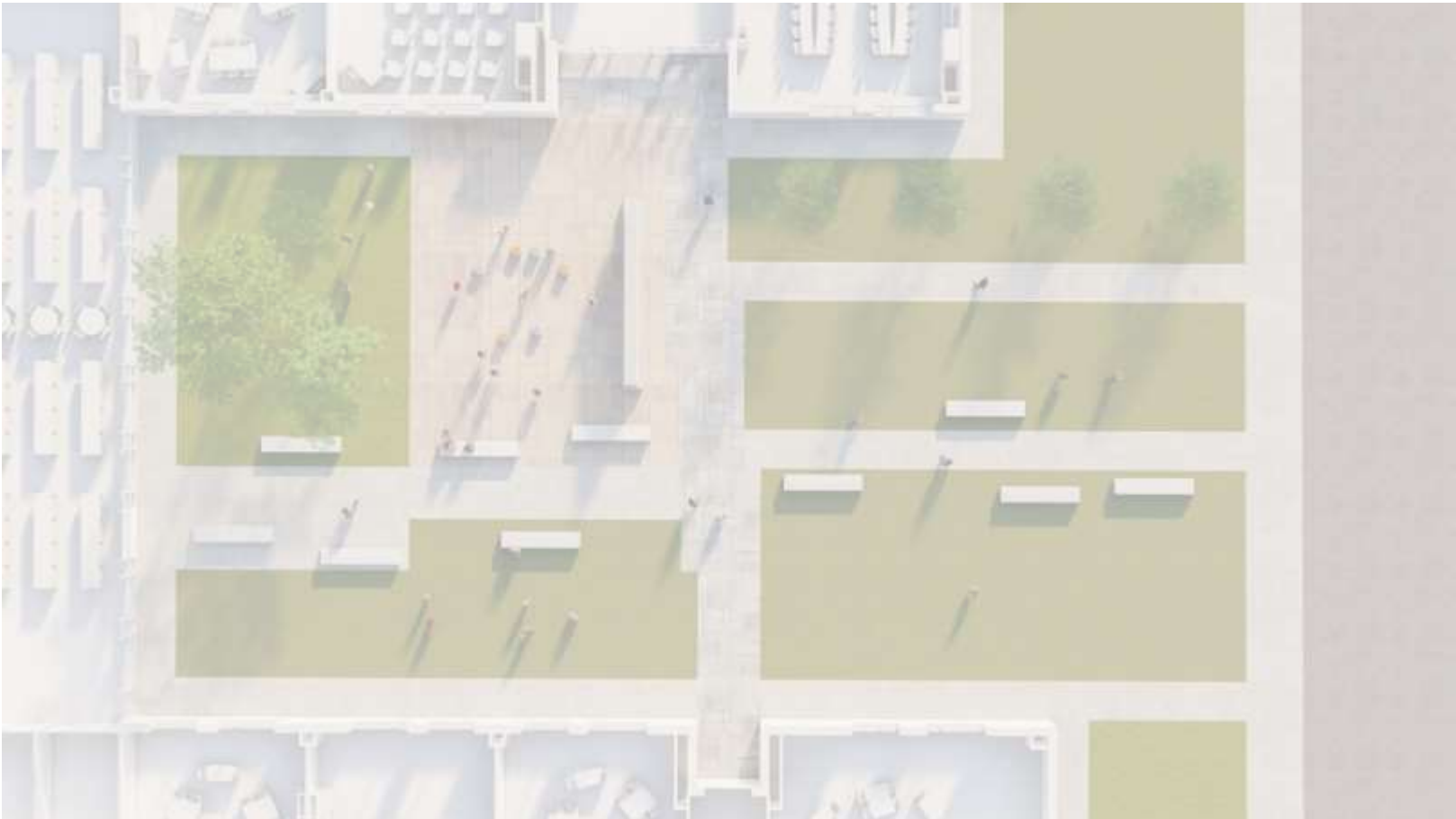
OPTION 1



OPTION 2



ORGANIC SHAPES AND PATHS



RECTILINEAR SHAPES AND PATHS



CONCEPT 1

- DOESN'T FEEL LIKE AN ELEMENTARY SCHOOL
- LIKED THE SIMPLE STRAIGHT FLOORING PATTERN
- LIKED THE WOOD MATERIALS
- MORE FIT FOR AN OFFICE INTERIOR



CONCEPT 2

- LIKED THE COLOR BUT TOO MONOCHROMATIC
- ROUND LIGHTS LOOK TOO BRIGHT
- DID NOT LIKE THE CURVED FLOOR PATTERNS FOR KIDS MOVING IN STRAIGHT LINES

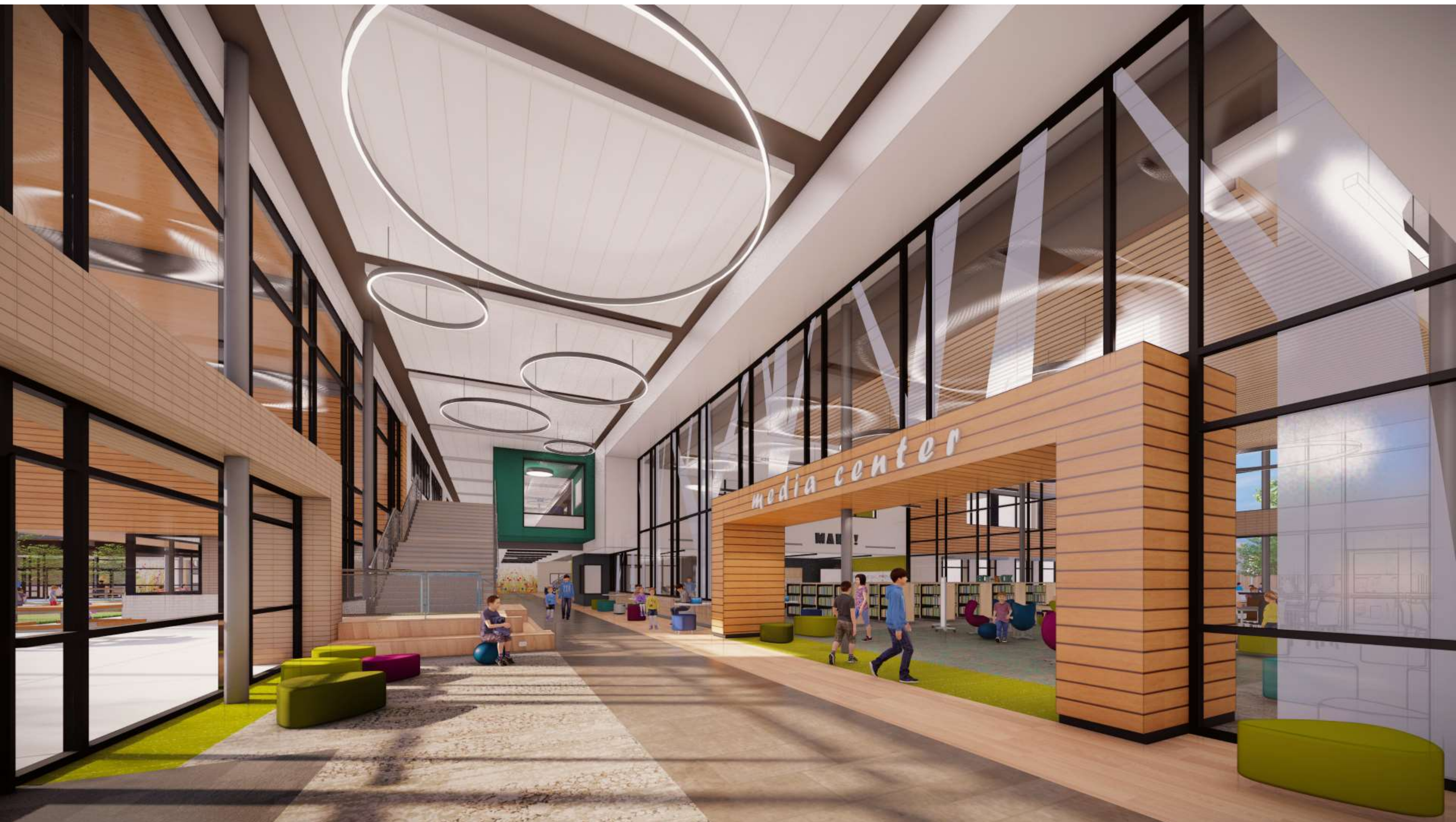


CONCEPT 3

- LOVE THE FROSTED TREE FILM
- REALLY LIKED THE CIRCLE LIGHTS
- LIKED THE WOOD ENTRANCE PORTAL TO THE LIBRARY
- LIKED THE POPS OF COLOR
- CARPET PATTERN TOO BUSY, BUT LIKED ACCENTS OF COLOR
- SPACE LOOKS INVITING
- LIKE THE DIFFERENT SIZE LIGHT FIXTURES

Interior Character Refinement

INTERIOR DEVELOPMENT: MAIN CORRIDOR AT LIBRARY



INTERIOR DEVELOPMENT: MAIN CORRIDOR AT LIBRARY



INTERIOR DEVELOPMENT: MAIN CORRIDOR AT LIBRARY



INTERIOR DEVELOPMENT: LIBRARY ENTRY PORTAL



INTERIOR DEVELOPMENT: LIBRARY



INTERIOR DEVELOPMENT: MAIN CORRIDOR AT BUS ENTRY



INTERIOR DEVELOPMENT: GYM / DINING ENTRY LOBBY



INTERIOR DEVELOPMENT: DINING ENTRY LOBBY



INTERIOR DEVELOPMENT: GYM / DINING ENTRY LOBBY



INTERIOR DEVELOPMENT: GYM VIEW



INTERIOR DEVELOPMENT: GYM VIEW



INTERIOR DEVELOPMENT: GYM VIEW



INTERIOR DEVELOPMENT: GYM VIEW



INTERIOR DEVELOPMENT: DINING VIEW



INTERIOR DEVELOPMENT: DINING VIEW



INTERIOR DEVELOPMENT: DINING VIEW



SMALL GROUP DISCUSSIONS

DISCUSSION ON THE PAT PROCESS AND THE NES DESIGN

BREAKOUT GROUPS (remain in zoom)

Group 1 – Jorge/Juan

Group 2 – Phillip / Melissa

Group 3 – Daniel / Brandon

Breakout Group Discussions: 15 minutes total

Regroup 10 minutes

GROUP DISCUSSION RECAP

Poll

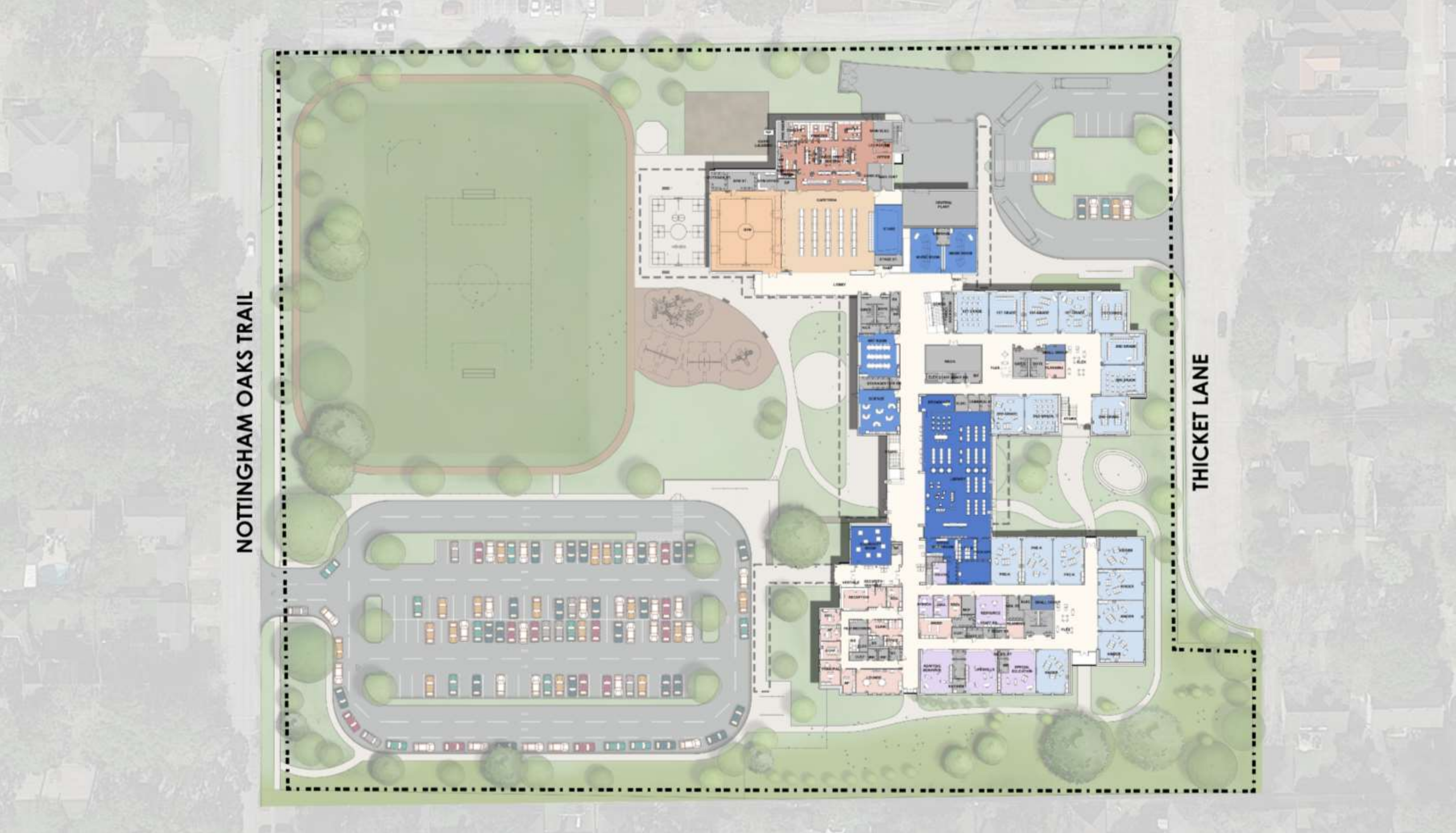
BASED ON YOUR PREVIOUS FEEDBACK AND COMMENTS ON THE INTERIORS, HAVE WE SUCCESSFULLY ADDRESSED YOUR COMMENTS OF THE INTERIOR DESIGN FOR THE NEW NOTTINGHAM ELEMENTARY SCHOOL?

Site and Floor Plan Update

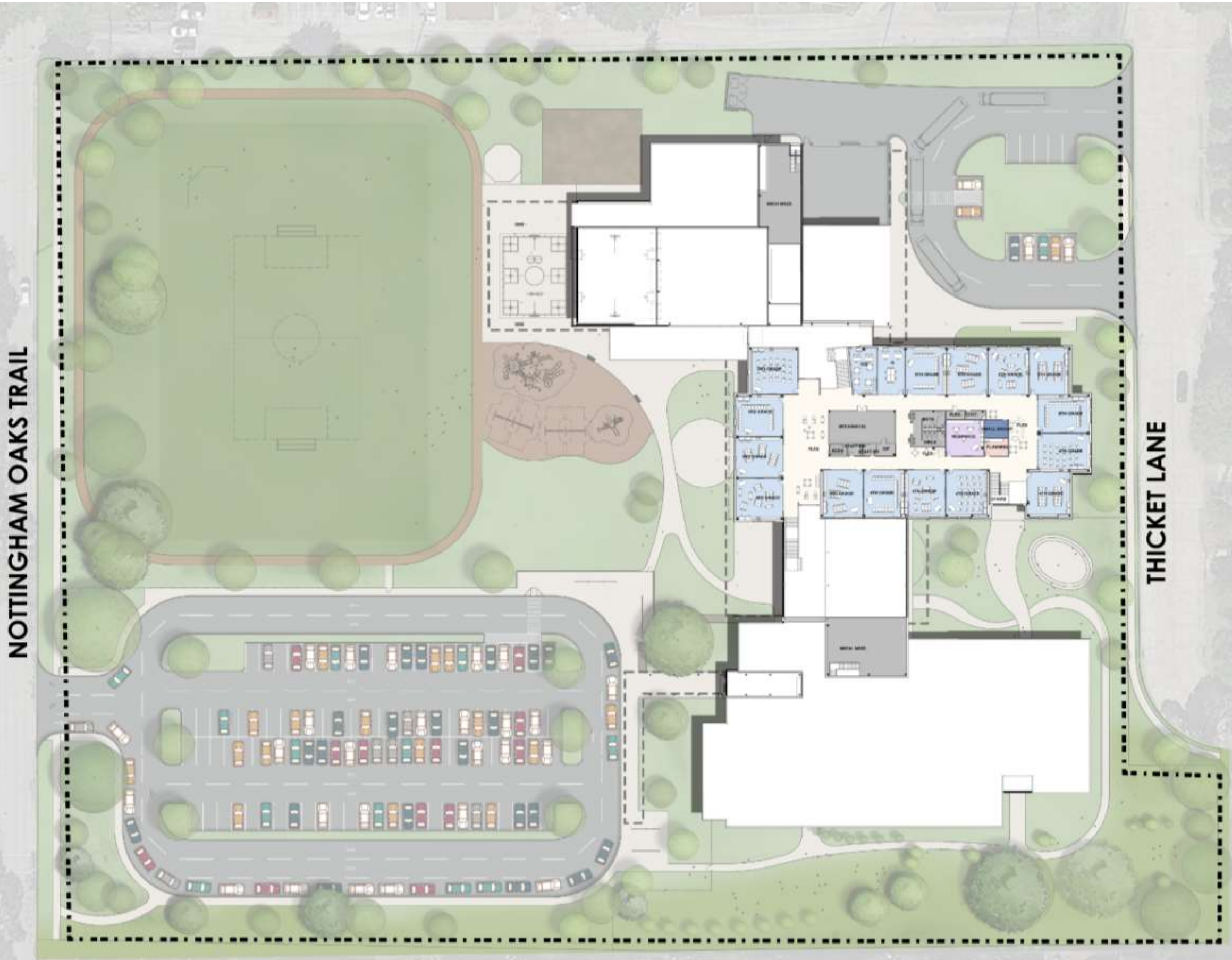
REFINED SITE PLAN: overall site plan



REFINED FLOOR PLANS: first floor



REFINED FLOOR PLANS: second floor



Exterior Character Development

EXTERIOR DEVELOPMENT: MAIN ENTRY



NOTTINGHAM ELEMENTARY SCHOOL



EXTERIOR DEVELOPMENT: MAIN ENTRY



NOTTINGHAM ELEMENTARY SCHOOL

EXTERIOR DEVELOPMENT: MAIN ENTRY AND LIBRARY AREA



NOTTINGHAM ELEMENTARY SCHOOL

EXTERIOR DEVELOPMENT: OUTDOOR COMMUNITY SPACE



NOTTINGHAM ELEMENTARY SCHOOL

EXTERIOR DEVELOPMENT: OUTDOOR COMMUNITY SPACE



NOTTINGHAM ELEMENTARY SCHOOL

EXTERIOR DEVELOPMENT: OUTDOOR SCIENCE/ ART CLASSROOM



EXTERIOR DEVELOPMENT: **PLAYGROUND AREA**



EXTERIOR DEVELOPMENT: **PLAYGROUND AREA**



EXTERIOR DEVELOPMENT: COVERED PLAY AREA



EXTERIOR DEVELOPMENT: COMMUNITY OUTDOOR AREAS



EXTERIOR DEVELOPMENT: COVERED PLAY AREA



EXTERIOR DEVELOPMENT: BUS LOOP ENTRY



NOTTINGHAM ELEMENTARY SCHOOL

EXTERIOR DEVELOPMENT: BUS LOOP ENTRY



NOTTINGHAM ELEMENTARY SCHOOL

EXTERIOR DEVELOPMENT: **LEARNING PLAZA / LIBRARY VIEW**



EXTERIOR DEVELOPMENT: **LEARNING PLAZA / LIBRARY VIEW**



EXTERIOR DEVELOPMENT: LEARNING PLAZA



GROUP DISCUSSION RECAP

Poll

BASED OFF OF THE PAT'S GUIDING PRINCIPLES, AND YOUR FEEDBACK AND COMMENTS THROUGHOUT THE PAT PROCESS, HAVE WE SUCCESSFULLY ACHIEVED THE GOALS FOR THE NEW NOTTINGHAM ELEMENTARY SCHOOL DESIGN?

NEXT STEPS

PLEASE JOIN US!

August 24, 2020: PRESENT DESIGN OF NES RECOMMENDATION TO THE BOARD

- SPRING BRANCH AND PBK WILL WORK WITH OUR CONSTRUCTION MANAGER AT RISK DURING CONSTRUCTION DOCUMENTS AND DEVELOP COST ESTIMATES FOR THE PROJECT
- POSSIBLE FUTURE PAT #8 SO THE TEAM CAN PROVIDE FUTURE UPDATES ON THE PROJECT.





**Thank you for all your
feedback and time!!**

Nottingham Elementary School