

2018-2019 Year End Fiscal Report



Summary of Revenues to Expenditures

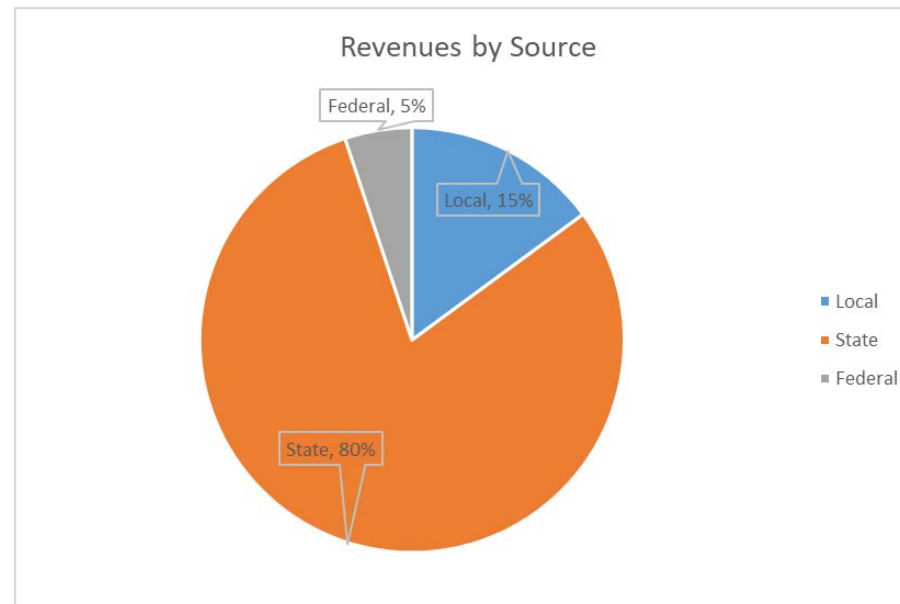
F196 Annual Report	17-18	18-19
Revenues	\$ 125,600,998.00	\$ 146,706,559.00
Expenditures	\$ 124,620,964.00	\$ 144,810,980.00
Revenues Over (Under) Expenditures	\$ 980,034.00	\$ 1,895,579.00



General Fund Revenues Budget vs. Actual

	Budget	Actual
Beginning Total Fund Balance 9-01-2018	\$16,000,000	\$17,687,410
Total Revenues and Other Financing Sources	148,188,839	146,706,559
Total Resources Available	164,188,839	164,393,969

Revenues by source	
Local	\$ 21,897,702.93
State	\$ 117,311,246.50
Federal	\$ 7,497,609.81
Total	\$ 146,706,559.24



General Fund Expenditures Budget vs. Actual

	Budget	Actual
Total Expenditures and Other Financing Uses	152,998,858	146,820,031
Excess of Revenues Over (Under) Expenditures	-4,810,019	1,895,579



General Fund Summary

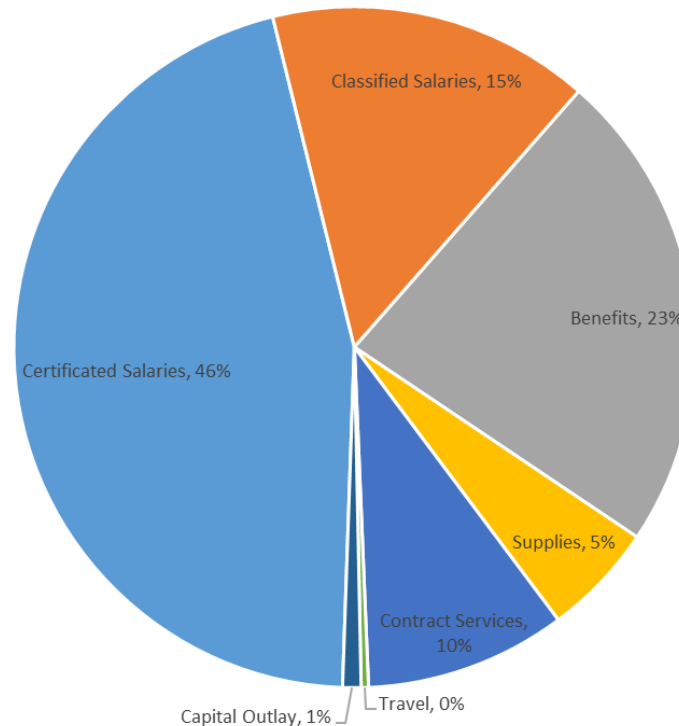
	Budget	Actual
Beginning Total Fund Balance 9-01-2018	\$16,000,000	\$17,687,410
Excess of Revenues Over (Under) Expenditures	-4,810,019	1,895,579
Ending Total Fund Balance 8-31-2019	<u>\$11,189,981</u>	<u>\$17,573,938</u>
Difference between budget and actual ending fund balance of \$6,383,957 represents 3.8% of total district resources		



General Fund Expenditure by Object

Object	YTD	% Of Total
Certificated Salaries	\$ 66,010,343	45.58%
Classified Salaries	\$ 22,185,701	15.32%
Benefits	\$ 33,240,427	22.95%
Supplies	\$ 7,772,199	5.37%
Contract Services	\$ 13,837,014	9.56%
Travel	\$ 501,781	0.35%
Capital Outlay	\$ 1,263,515	0.87%
Total	\$ 144,810,980	100%

2018-19 Expenditures by Object

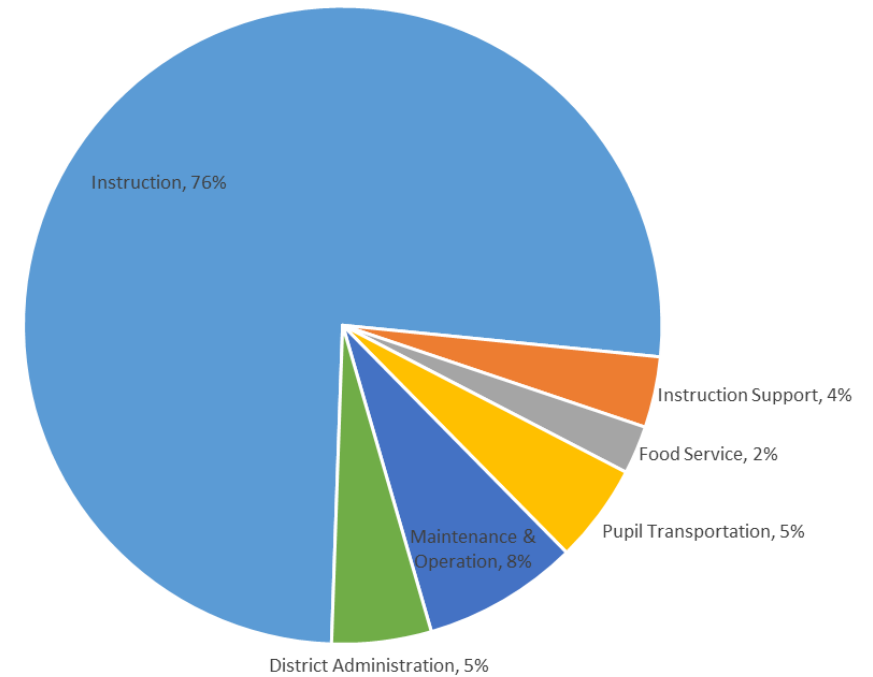


General Fund Expenditure by Activity

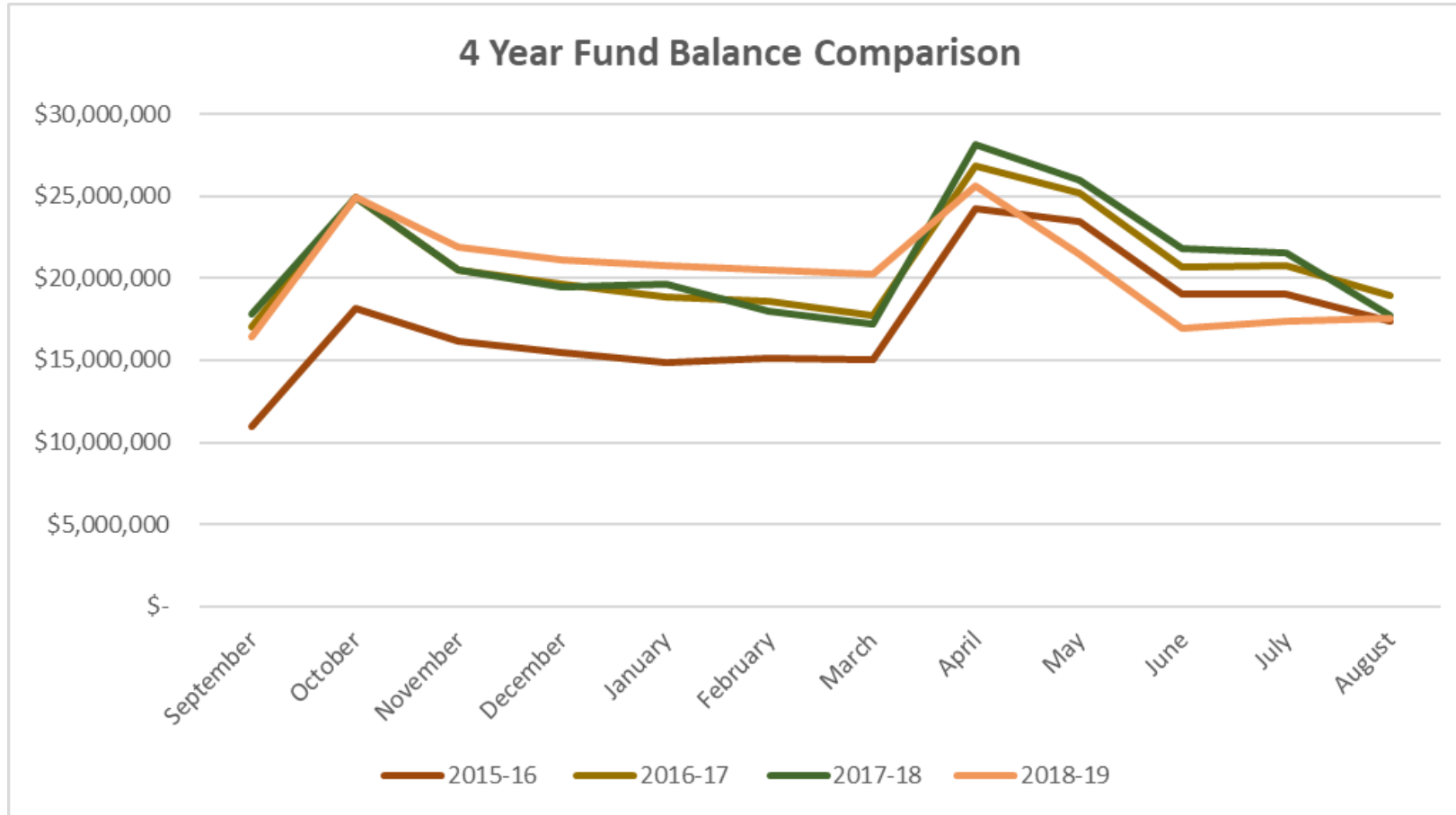
Activity		% Of Total
Instruction	\$ 110,098,843	76%
Instruction Support	\$ 5,201,314	4%
Food Service	\$ 3,544,696	2%
Pupil Transportation	\$ 7,242,121	5%
Maintenance & Operation	\$ 11,431,647	8%
District Administration	\$ 7,292,358	5%
Total	\$ 144,810,980	100%

Instruction	Teachers (Paras), supervision, library etc.
Instruction Support	Curriculum, professional development etc.
Food Service	Food, operations, supervision etc.
Pupil Transportation	Operations, maintenance, supervision, etc.
Maintenance & Operation	Insurance, utilities, security, grounds etc.
District Administration	Board, Supt, Bus Office, HR, Comm, IT etc.

2018-19 Expenditures by Activity



Fund Balance History



Fund Balance

<u>Unassigned, Assigned and Restricted Fund Balances-</u> Contingencies, Program Carryover, Levy Funds, Minimum Fund Balance (per Board Policy)	\$16,238,599
<u>Restricted Fund Balance - GL 821</u> Amounts restricted by legislation	\$367,637
<u>Non-spendable - GL 840</u> Inventories, assets that are not in spendable form (food services, warehouse etc.)	\$967,702
<u>Grand Total</u>	\$17,573,938



ASB Summary

These funds are for the extracurricular benefit of the students and disbursal must be student approved.

<u>Beginning Fund Balance</u>	\$734,667
<u>Total Revenues</u>	\$974,120
<u>Total Expenditures</u>	\$960,171
<u>Excess Revenues over Expenditures</u>	\$13,949
<u>Total Ending Fund Balance</u>	\$748,616

Capital Projects Summary

<u>Beginning Fund Balance</u>	\$1,295,139
<u>Total Revenues and other Financing</u>	\$4,035,893
<u>Total Expenditures</u>	\$3,618,535
<u>Excess Revenues over Expenditures</u>	-\$417,358
<u>Total Ending Fund Balance</u>	\$1,712,497

Capital Projects

The Capital Levy provided funding for many projects during the 2018-19 year including:

- Access control doors
- New roofs at Marcus Whitman and John Sedgwick Middle schools
- Middle school Projectors

Future plans include:

- Fire Alarm Upgrades at the High School
- Hiring a Capital Projects Coordinator to begin developing a plan for and overseeing upcoming projects



Transportation Summary

Only to be used for the purchase of School Buses.

<u>Beginning Fund Balance</u>	\$625,086
<u>Total Revenues and other Financing</u> Includes state depreciation, a transfer in from General Fund as well as a Grant received from the Department of Ecology.	\$1,357,646
<u>Total Expenditures</u>	\$1,360,662
<u>Excess Revenues over Expenditures</u>	-\$3,016
<u>Total Ending Fund Balance</u>	\$622,069



Year End Summary

The 2018-19 Budget was built in order to support many District goals including:

- Special Education Program Re-Boot
- K-5 Curriculum Adoption
- Maintenance of class sizes
- Continuation of Kindergarten Paraeducators
- Safety and Security improvements
- Facilities and Operations improvements



Thank you

