

FESLER-LAMPERT

Performing Arts Series 2011-12

Native Pride Dancers

King Arthur's Quest
Presented by Missoula Children's Theatre

Jevetta Steele

The Butch Thompson Trio

Zorongo Flamenco Dance Theatre

William Shakespeare's
"The Taming of the Shrew"

Acoustic Roots

Shattuck-St. Mary's Music Series 2011-12

TRAMPLED BY TURTLES
with Molly Maher & Her Disbelievers
and Alison Rae

JAY UNGAR AND MOLLY MASON
The Heart and Soul of
American Roots Music

GREG HERRIGES & TELLURIC CURRENTS
World Music that Blends Eastern
and Western Cultures

All performances take place in **Historic Newhall Auditorium**

Tickets and order information call: **507-333-1620 ext. 2**

Make Checks Payable To: **SHATTUCK-ST. MARY'S**

Package Discounts: **FOUR or MORE FESLER-LAMPERT SHOWS SAVE 10%
ALL 3 ACOUSTIC ROOTS SHOWS FOR \$45**

Founded in 1858, the same year that Minnesota became a state, Shattuck-St. Mary's is rich in tradition and pioneering spirit. Built on a lush 250-acre campus on the bluffs of the Straight River in Faribault, our collegiate stone buildings are listed in the National Register of Historic Places. A coeducational, college preparatory boarding and day school for students in grades 6-12, Shattuck-St. Mary's was home to 438 students from 37 states and 20 countries during the 2010-2011 school year. Our diverse student body benefits from our small class sizes, rigorous academics, and numerous opportunities for excellence in athletics, academics and the arts.

Package Discounts:
**4 or MORE FESLER-LAMPERT SHOWS SAVE 10%
ALL 3 ACOUSTIC ROOTS SHOWS FOR \$45**

Send us your email address and we'll keep
you informed about upcoming arts events
at Shattuck-St. Mary's.
feslerlampert@s-sm.org

All performances take place in
Historic Newhall Auditorium
Tickets and order information call:
507-333-1620 ext. 2
Make Checks Payable To:
SHATTUCK-ST. MARY'S



P.O. Box 218, Faribault, MN 55021

FORWARDING SERVICE REQUESTED

NONPROFIT ORG.
U.S. POSTAGE
PAID
FARIBAULT, MN
Permit No. 21

Acoustic Roots 2011-12

A Shattuck-St. Mary's Music Series

Shattuck-St. Mary's is pleased to partner with the Minnesota Music Coalition to host one of the performances in MMC's CARAVAN DU NORD: A Traveling Showcase of Minnesota Music. On Saturdays during September and October, seven Minnesota communities host residencies and performances by some of the state's best independent artists. Groups selected for the tour include Low, New Standards, Doomtree, Trampled by Turtles, Heiruspecs, Roma Di Luna, Ben Weaver, Nicholas Mrozinski and the Feelin Band, Lucy Michelle and the Velvet Lapelles, Molly Maher and Her Disbelievers, and Alison Scott. This is the first project of the Minnesota Music Coalition. See their website for a complete listing of the Caravan du Nord tour. www.mnmusiccoalition.org



TRAMPLED BY TURTLES*

ADULTS \$20, STUDENTS \$15

with **MOLLY MAHER & HER DISBELIEVERS** and **ALISON RAE**

A Traveling Showcase of Minnesota Music • MINNESOTA MUSIC COALITION presents "CARAVAN DU NORD"

SATURDAY, OCTOBER 8, 2011 at 7:30 PM

With four self-released albums to their credit and a word-of-mouth reputation that draws legions of diehard fans to their must-see-to-believe live shows, northern roots music hybrid Trampled by Turtles released Palomino, in April, 2010. With a sound that's a bracing hybrid of classic American songwriting, bluegrass and folk, this is forceful acoustic music from the land of ice and snow – of dark winters, isolation and numbing cold – delivered at breakneck pace with the fervor of religion. While they never set out to be a "bluegrass" band, the band employs the same time-honored tools of the trade – guitar, acoustic bass, banjo, mandolin and fiddle – as their 'grass-fed country cousins. But their soul-deep differences in influences, attitude and attack, from their quicksilver, deadly accurate picking to their lonesome, hauntingly spare ballads, make for a very different musical beast indeed. Opening sets by Alison Rae, followed by Molly Maher & Her Disbelievers.

www.mnmusiccoalition.org

www.trampledbyturtles.com

www.mollymaher.com

www.myspace.com/alisonraemusic



JAY UNGAR AND MOLLY MASON

ADULTS \$15, STUDENTS \$9

The Heart and Soul of
American Roots Music

THURSDAY, OCTOBER 20, 2011 at 7:30 PM

Jay Ungar and Molly Mason achieved international acclaim when their performance of Jay's composition, Ashokan Farewell, became the musical hallmark of Ken Burns' The Civil War on PBS. The soundtrack won a Grammy and Ashokan Farewell was nominated for an Emmy. Jay and Molly play Cajun and Celtic fiddle tunes, and favorites from the golden age of country and swing—along with their

own numbers. In recent years, Jay and Molly have reached an ever widening audience through their appearances on Great Performances, A Prairie Home Companion, their own public radio specials and through their work on film soundtracks such as Brother's Keeper, Legends of the Fall, and a host of Ken Burns' PBS documentaries. They've had the honor of performing at the White House for two sitting Presidents and continue to tour extensively delighting audiences across the country. www.jayandmolly.com



GREG HERRIGES & TELLURIC CURRENTS

ADULTS \$15, STUDENTS \$9

World Music that Blends Eastern
and Western Cultures

THURSDAY, NOVEMBER 10, 2011 at 7:30 PM

Greg Herriges plays an eclectic mix of original and traditional world music on guitar, voice, and bouzouki (Greek lute), with an innovative approach honed by his studies of Asian and other international styles. A virtuoso performer and award-winning composer, his music and writing have found international acclaim. Among other honors, Greg was selected to receive

the 2009-10 Bush Artist Fellowship for Music Composition, which speaks volumes for his artistry and dedication to music. For this concert in the Acoustic Roots Music Series, Greg presents "Telluric Currents," a dynamic fusion of East and West with classical Indian singing and tabla mastery. Named after the natural electrical currents beneath the Earth, "Telluric Currents" explores the traditions of East and West and whirles them together to create a mesmerizing cultural music experience!

www.gregherriges.com

The Acoustic Roots Music Series is funded in part by The Fesler-Lampert Performing Arts Endowment Fund which was established in 1985 by Elizabeth P. and David R. Fesler (Shattuck School Class of 1946). Through performances, artist residencies and workshops, the series presents an exciting array of cultural enrichment experiences for students, faculty and the community of Faribault.

Shattuck-St. Mary's School Presents...

The 2011-12 Fesler-Lampert Performing Arts Series

The Fesler-Lampert Performing Arts Endowment Fund was established in 1985 by Elizabeth P. and David R. Fesler (Shattuck School Class of 1946). Through performances, artist residencies and workshops, the series presents an exciting array of cultural enrichment experiences for students, faculty and the community of Faribault.

All performances take place in Historic Newhall Auditorium



NATIVE PRIDE DANCERS* WITH LARRY YAZZIE ADULTS \$15, STUDENTS \$9

THURSDAY, SEPTEMBER 8, 2011 at 7:30 PM

www.nativepridearts.org

Experience the excitement of Native American traditional dance, singing and music! World champion fancy dancer Larry Yazzie of the Meskwaki Nation brings the Native Pride Dancers to the Newhall Auditorium stage. The dancers perform the movement and music of their ancestors that have been passed down over the centuries. The dances feature spectacular costumes, flamboyant fancy dance, high energy free-style movement and sacred songs from the tribes of the Northern Plains. The program includes singing, flute music, drumming and a variety of dance styles including the buffalo, eagle, round dance and hoop dancing that celebrate various animals, crops, the sun and the wind.

KING ARTHUR'S QUEST ADULTS \$10, STUDENTS \$6

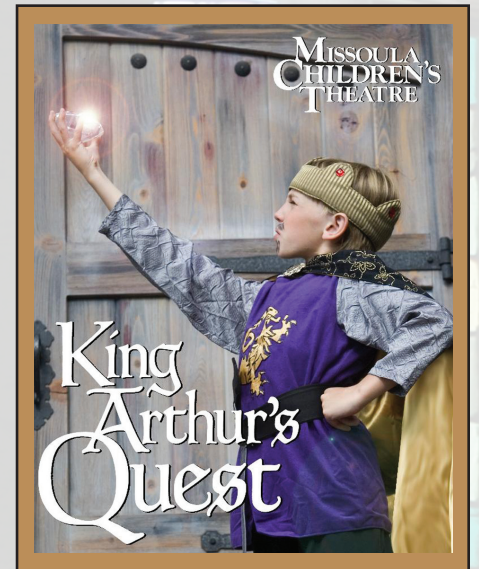
Presented by MISSOULA CHILDREN'S THEATRE

(Open Auditions, Monday, September 19, 2011 at 4:00 PM)

SATURDAY, SEPTEMBER 24, 2011 at 3:00 and 5:30 PM

www.mctinc.org

When the little red truck from Missoula Children's Theatre pulls into Faribault, it has everything it takes to mount a full-scale musical production of King Arthur's Quest... except the cast. That's where the local children come in. On Monday they're cast as characters. By Saturday, they've gained character – the kind that really counts. King Arthur, of legend and song, strode across Medieval England with courage and confidence...or did he? What if the troubles of his kingdom threatened to overwhelm him? All your favorite characters of Camelot are here – King Arthur, Guinevere, Merlin, Lancelot, Damsels in Distress, and even a terrible Dragon! Follow the original twist on this familiar story as it weaves its way through a landscape full of surprises!



JEVETTA STEELE

THURSDAY, DECEMBER 8, 2011 at 7:30 PM

ADULTS \$15, STUDENTS \$9

www.thestelesmusic.com

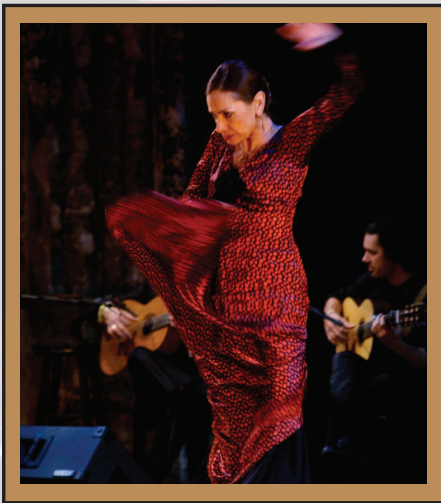
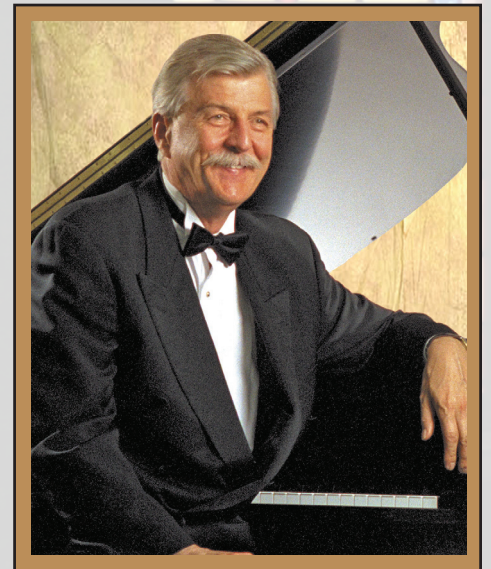
Jevetta Steele is a musical tour de force. A member of the acclaimed Minneapolis musical family, The Steeles, Jevetta's career has taken her around the world. Her lead role in the international touring show "The Gospel at Colonus" included an international tour and eventually a run on Broadway. Jevetta has enjoyed performing on many stages from London to Brazil, Carnegie Hall to the Guthrie Theater performing jazz, gospel, R&B, classic show tunes and opera. She has enjoyed recording and touring with legends including Prince, Mavis Staples, George Clinton, Natalie Merchant, Kirk Whalum and The Sounds of Blackness. She was nominated for an Academy Award for her song "Calling You" from the film "Baghdad Café". Join us in Newhall Auditorium for a very special evening of song!

THE BUTCH THOMPSON TRIO* ADULTS \$15, STUDENTS \$9

THURSDAY, JANUARY 19, 2012 at 7:30 PM

www.butchthompson.com

The sweetness and buoyant rhythm of New Orleans music took hold of Butch Thompson's life at an early age and hasn't let go. His roots run deep, and he has played his personal style of traditional jazz and ragtime piano from Kansas City to Cairo. Audiences know him from his long run on the popular nationally broadcast show A Prairie Home Companion. Now discover Butch Thompson as one of the world's top jazz and ragtime performers, a concert artist who connects easily with his audience as he gives them a personally guided tour of a rich American tradition. Newhall Auditorium is a wonderful, intimate concert hall... the perfect place to enjoy an engaging and dazzling performance by The Butch Thompson Trio!



ZORONGO FLAMENCO DANCE THEATRE* ADULTS \$15, STUDENTS \$9

THURSDAY, JANUARY 26, 2012 at 7:30 PM

www.zorongo.org

Clapping hands rise and fall. The haunting laments of the singers join the explosive rhythms of the guitars. The dancers' staccato feet, drum like heartbeats. This is the power and passion of the Spanish dance of Zorongo Flamenco Dance Theatre! Foot-stomping dance shows like Riverdance, Stomp!, Tap Dogs, Rhythmic Circus, and Lord of the Dance have been filling performance halls throughout the world. Groups like The Gypsy Kings are bringing flamenco music to new audiences. Now, Zorongo Flamenco Dance Theater brings world class, traditional flamenco (the dance and music of the gypsies of southern Spain) to life. Flamenco is known for its raw and primitive style... a dance form that stirs the blood and lets the spirit soar!

WILLIAM SHAKESPEARE'S "THE TAMING OF THE SHREW"

ADULTS \$15, STUDENTS \$9

Presented by NATIONAL PLAYERS

THURSDAY, MARCH 22, 2012 at 7:30 PM

The National Players troupe has earned a distinctive place in American theater. They are America's longest running touring company, presenting the world's greatest dramatic literature to audiences from coast to coast for over sixty years. This year they bring William Shakespeare's bawdy comedy "The Taming of the Shrew" to the Newhall stage as part of SSM's Shakespeare Week. National Players present the show with a Wild West flare. Cowboy boots, whips, and lassos give a biting punch to this classic. The play is an examination of the nature of love and relationships that focuses on a battle of wills between two strong and independent individuals. The verbal duel never stops in this rollicking western comedy!



CALL FOR GROUP RATES Tickets & Order Information call: 507-333-1620, ext. 2

Package Discounts: Four or more Fesler-Lampert shows save 10%

Mail Orders: Shattuck-St. Mary's, Fesler-Lampert Office, P.O. Box 218, Faribault, MN 55021

Make Checks payable to: SHATTUCK-ST. MARY'S SCHOOL

Send us your email address and we'll keep you informed about upcoming arts events at Shattuck-St. Mary's School. feslerlampert@s-sm.org