

# SUFFIELD PUBLIC SCHOOLS

**FY22 BOE Budget Proposal**

**Town Meeting**

**May 26, 2021**

---



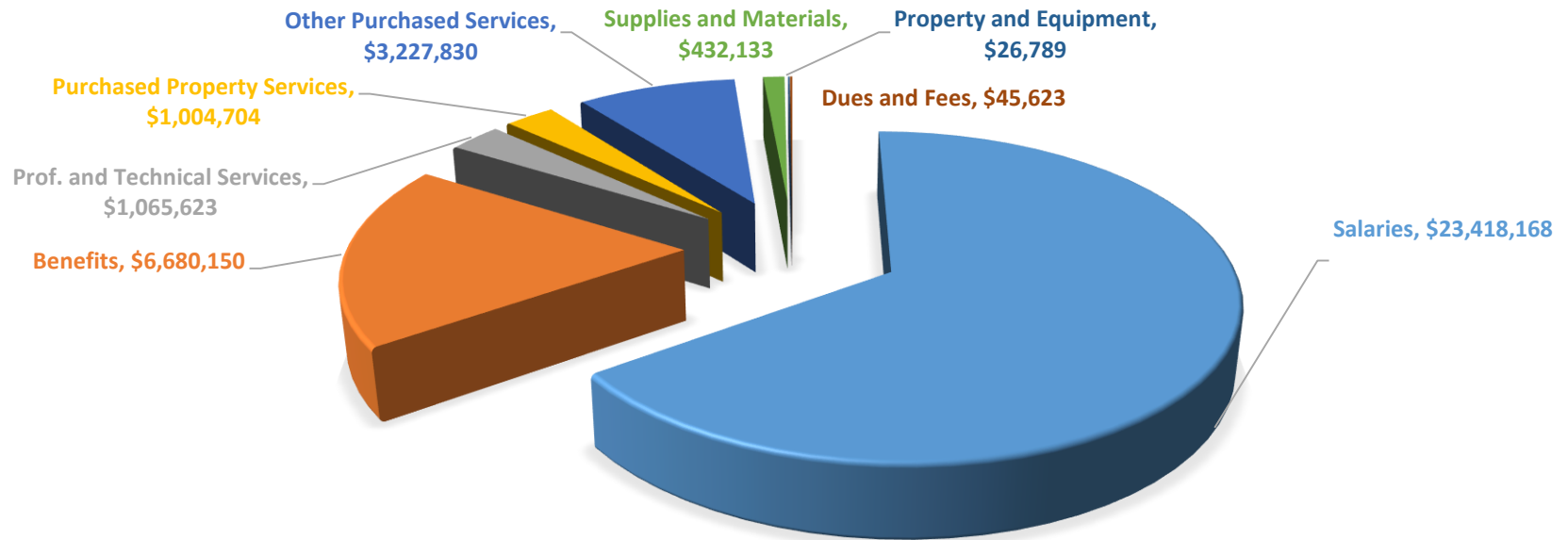
# Key Takeaways

□ BOE Proposed Budget:

\$35,901,022

0%

\$0 increase over 2020-2021





# Personnel Impacts



## □ Proposed Personnel Reductions

### **0.2 FTE Physical Education Teacher & 0.8 FTE Non-admin Athletic Director**

0.2 FTE PE reduction will be covered by PE Department

0.8 FTE Non-admin Athletic Director will be covered w/Admin. 1.0 FTE Athletic Director

### **210 Day Work Year for Intermediate Assistant Principal**

### **210 Work Year for Elementary Special Education Supervisor (New Hire)**

### **1.0 FTE English Language Learning Teacher**

Reflects realignment of intervention program and reassignment of EL responsibilities

### **1.5 FTE School Secretary**

0.5 FTE MIS Secretary (Pupil Services)

1.0 SHS Secretary (Main Office)

### **\* 6.6 FTE Paraprofessional \***

Reflects current status of positions based upon student need

Phased out through attrition

### **0.8 FTE SHS Hall Monitors**

SHS will continue to have hallway monitor coverage

# Personnel Impacts

□ Proposed Personnel Increases

**1.0 FTE Director of Athletics and Student Activities (Administrative)**

**0.38 FTE Part-time Cleaner (15 hours per week)**

Will increase custodial staffing and reduce overtime wages

□ Alternate Personnel Impacts to BOE Budget

**2.0 STEM Elementary Classroom Teachers  
(Open Choice to BOE Operating Budget)**

Due to reduced funds in Open Choice Grant

**0.68 FTE Instructional Coaches  
(Title II to BOE)**

Due to reduced funds in Title II

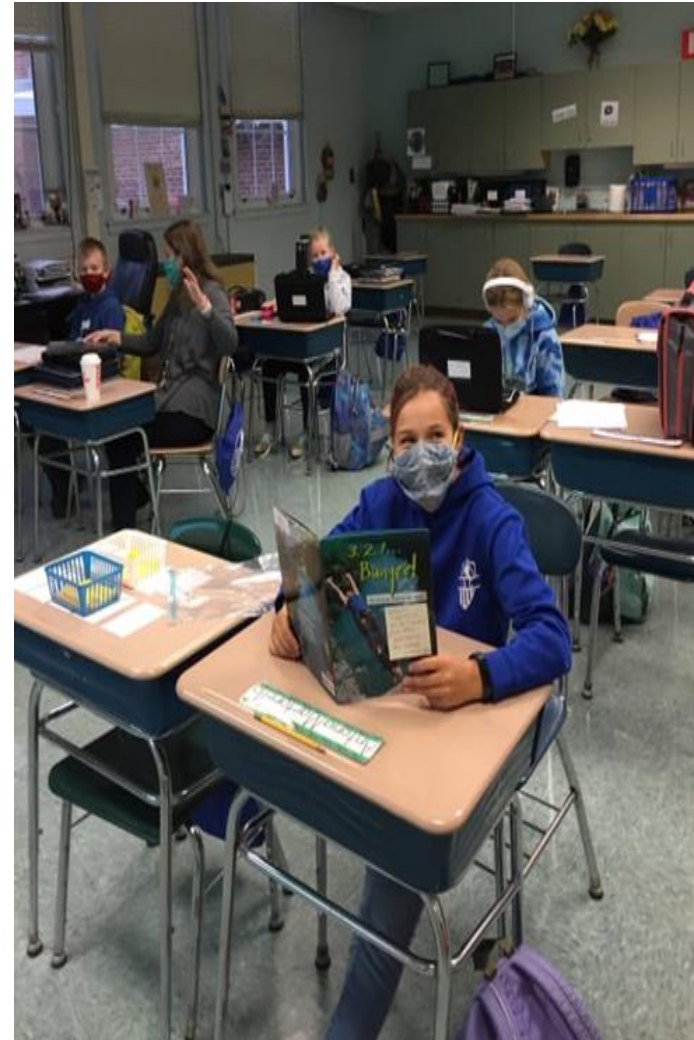
**\*\*\* 8.42 FTE to ESSER (1 Year Change) \*\*\***

Position	FTE	Salary
Academic Support	2.00	\$45,328
Psychologist	2.00	\$129,289
Social Worker	2.04	\$111,433
Guidance Counselor	2.00	\$202,204
Cleaner	0.38	\$14,776
<b>Total</b>	<b>8.42</b>	<b>\$503,030</b>



# Additional Savings and Liabilities

- Potential Additional Savings
  - 10% Health Insurance Increase
  - Health Insurance Enrollment Savings
  - Faculty and Staff Turnover
  
- Potential Additional Liabilities
  - Teamsters Local 671 CBA (Negotiations Pending)
  - Special Education Outplacements
  - Faculty and Staff Turnover





**\$35,901,022**

**0%**

**(\$0)**



# Thank You!

---

