

Orange Unified

EDGE

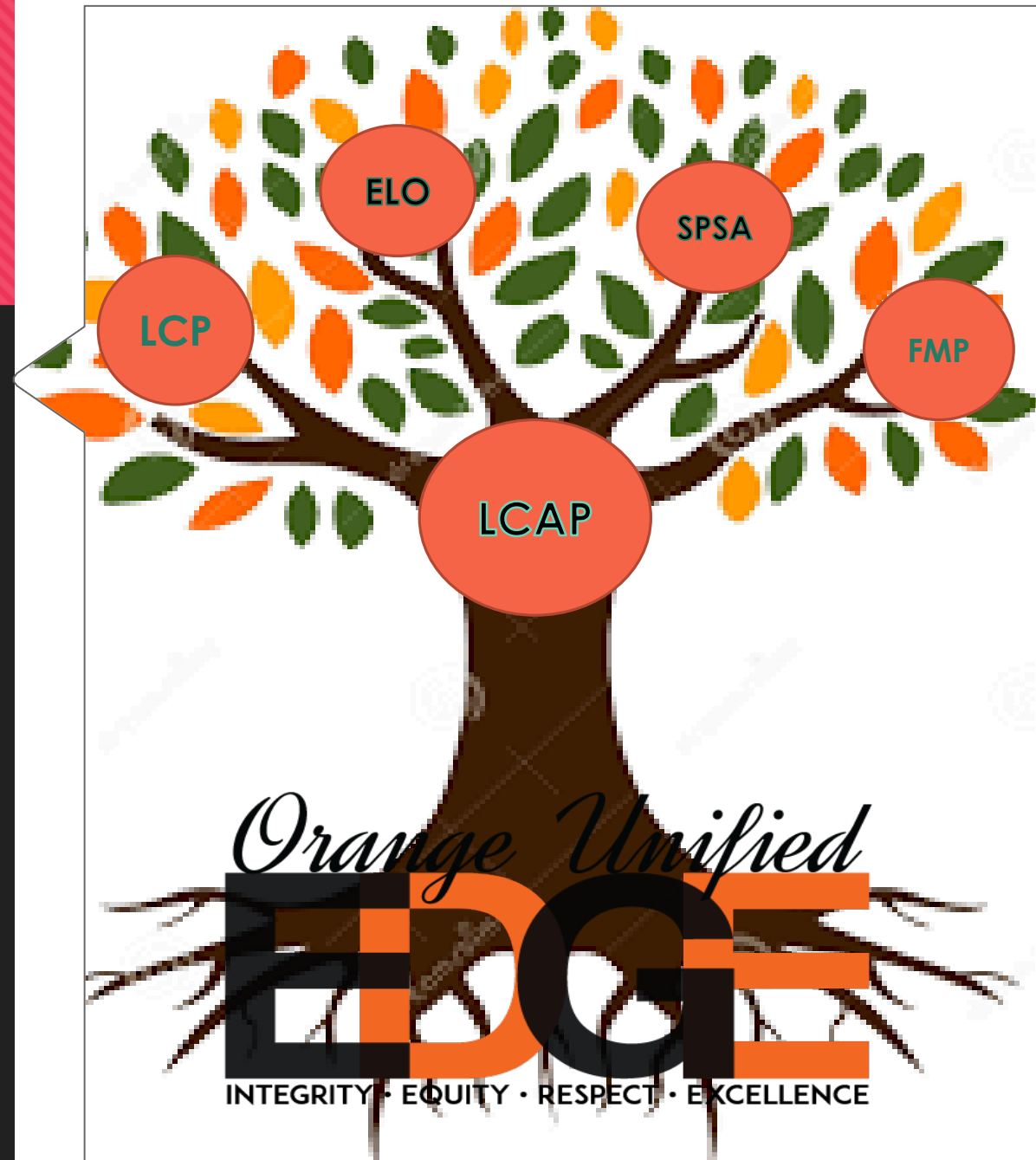
INTEGRITY • EQUITY • RESPECT • EXCEL

**EXPANDED LEARNING
OPPORTUNITIES
GRANT PLAN**

2021-2022

OUR FOUNDATION

- OUSD EDGE provides the foundation
- LCAP is deeply rooted in the EDGE
- All plans are a branch of the LCAP



INTENT OF ELO GRANT FUNDING

- Provide funding for expanded learning time, intervention, and learning supports to close identified gaps
- 85% of expenditures must be spent on in-person services
- 10% of these services must include paraprofessionals
- 15% of expenditures may target services for distance learning students



Expanded Learning Opportunities Grant

- Extended instructional learning time such as summer school
- Accelerating progress to close learning gaps such as tutoring & paraprofessional support
- Integrated student supports to address other barriers to learning such as counseling services
- Supports for credit deficient students such as credit recovery
- Additional academic services such as diagnostic, progress monitoring assessments
- Training for school staff on strategies
- Community learning hubs for technology



Stakeholder Input

- Counseling services
- Physical Education services integrated with wellness components
- Summer School Opportunities
- Tutoring Services (contracted services, as well as teacher provided)
- Sections to address learning loss, expand EL co-teaching, & AVID intervention
- Various Instructional materials/programs
- Paraprofessionals
- Technology
- Personal protective equipment (PPE) & cleaning supplies
- Professional development



Next Steps...

- Approved plan will be sent to California Department of Education
- Posted on website alongside LCAP
- Continued updates on expenditures in Weekly Friday Letter
- Continued commitment to transparency, flexibility & long-term sustainability.

