



Nottingham Elementary School

project advisory team

March 30, 2021 | 3:30pm – 5:30pm

design meeting #4

TEAM



Becky Hagan

Nottingham Elementary School Principal

Travis Stanford

Associate Superintendent for Operations

Max Buja

Director of Planning and Construction

Noel Moreno

Project Manager

Kris Drosche

Project Manager



Brandon Ross

Partner

Melissa Turnbaugh

Partner

Jorge Tiscareño

Design Principal

Daniel De La Garza

Principal / Senior Designer

Philip Stewart

Senior Project Manager

Juan Valdez

Project Manager

PAT TEAM

Campus Principal

Becky Hagan

Assistant Principal

Sherrie Folger

Parents

Tara Cunningham-Baker
Kristin Anderson

Campus Staff

Kelli Atkinson
Sabrina Lay

PTA President

Linda Dang

HOA Representatives

Ysella Kaseman
Peter DallePezze
Cassie McClung

CIT Members

Watson Potter
Wayne Watson
Courie Anderson
Sarah Davidson
Tonya Spell
Megan Kessler
Claire Mercaldo
Payton Kingsley
Sarah Dale
Sabrina Lay
Melanie Marshall
Thomas Debesse
Jeanette Choy
Kelly Borally
Stacey Zubair

Business Representative

James Warren

PAT #4 Meeting AGENDA

10 min	PAT Charge & Process, Project Overview, Schedule, Guiding Principals
10 min	PAT #3 Recap – Discussion outcome on the 2 options
30 min	Present Site & Floor Plan Development and Refinement
35 min	Break Out Group Discussions and Regroup
25 min	Exterior Images Recap and Present Exterior Design Concepts
5 min	Next Steps

SUPERINTENDENT PROJECT ADVISORY TEAM (PAT) CHARGE

GOAL

- The goal of the PAT is to ensure that parents, staff and community members have the opportunity to take part in the planning and design of new schools.
- The PAT will meet as needed throughout the project, from initial planning, through design to the start of construction.
- The PAT concludes its work once construction begins.

CHARGE

- Each Project Advisory Team's (PAT) members are charged with **providing input into planning and design development** for their school's new construction or major renovation project in the 2017 Bond Program.
- The PAT members will **serve as communicators** to and from the community during the design phases of the project and participate in discussions that will lead to recommendations.
- Recommendations will not regard standards, programs, policies, and pedagogy.
- These recommendations will be reached through consensus, and be presented to the Board of Trustees.



THOUGHTFUL EXPLORATION



HANDS ON ENGAGEMENT



INFORMED AND COLLABORATIVE DECISION MAKING

OVERALL PROJECT SCOPE

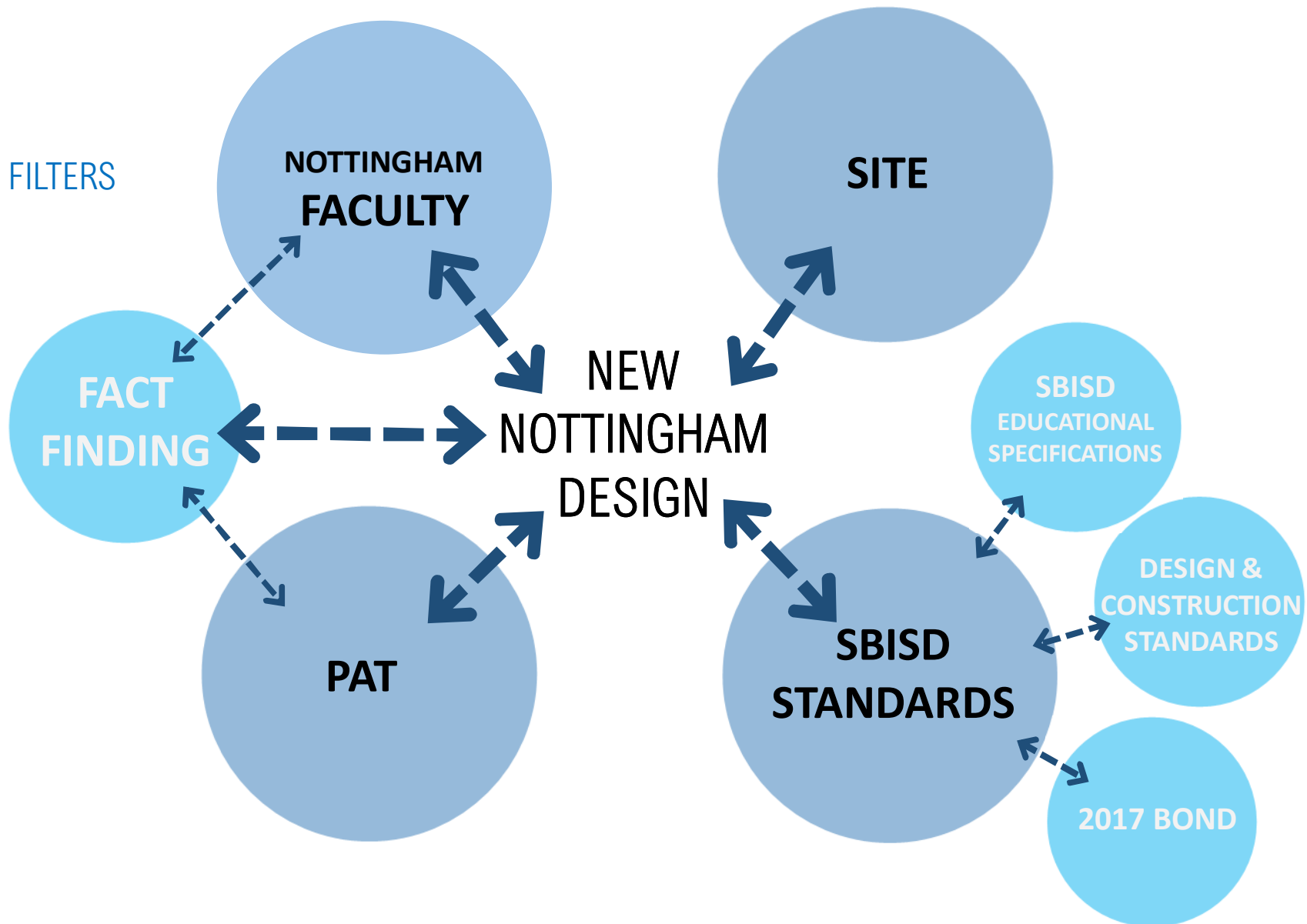
REPLACEMENT NOTTINGHAM ES
min 750 STUDENT CAPACITY
+/- 105,000 GSF

REPLACE SCHOOL ON EXISTING CAMPUS
WHILE EXISTING SCHOOL IS OPERATIONAL

OPENING OF FALL 2023



DESIGN LENS FILTERS

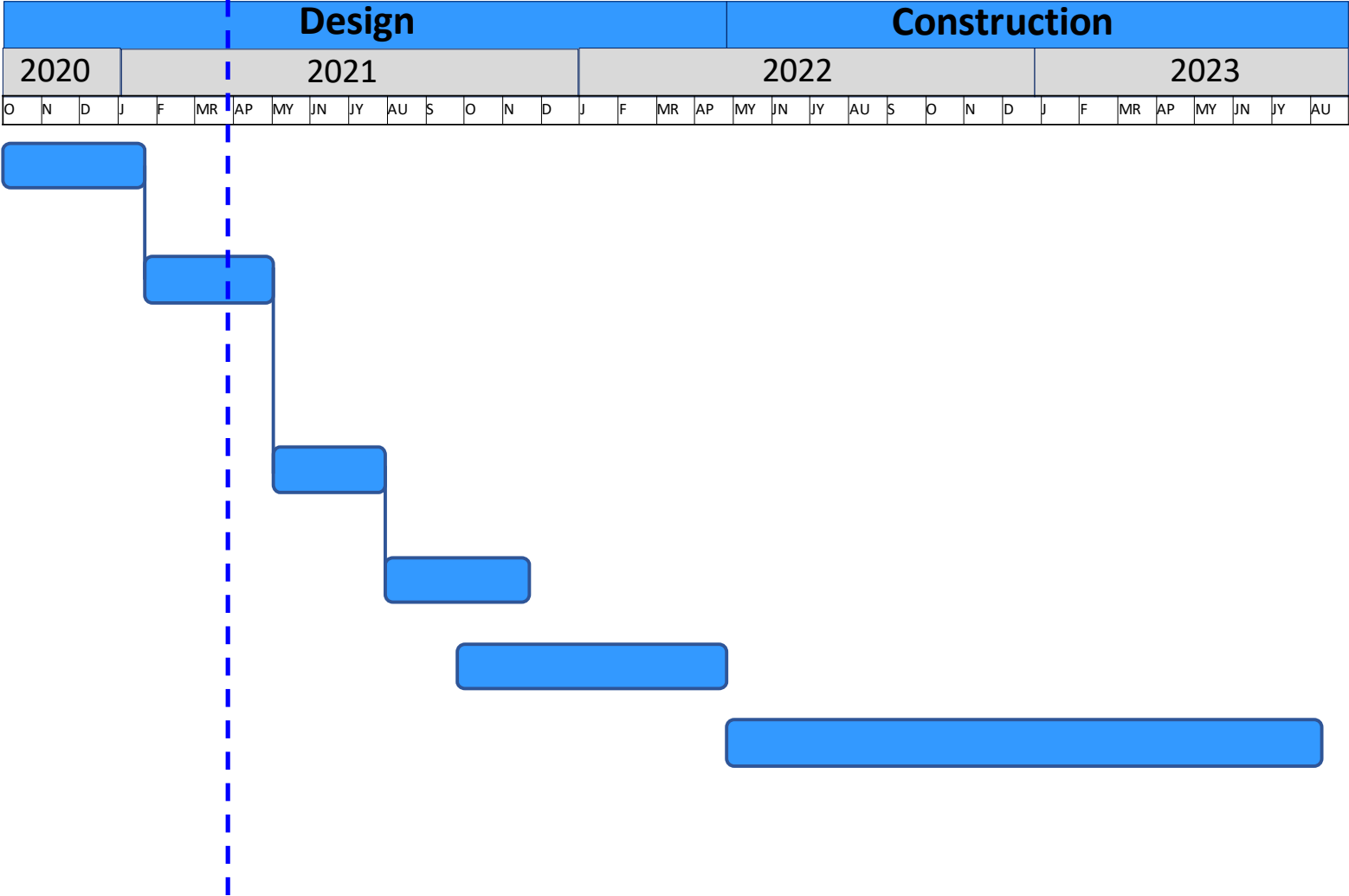


PAT GUIDING PRINCIPLES

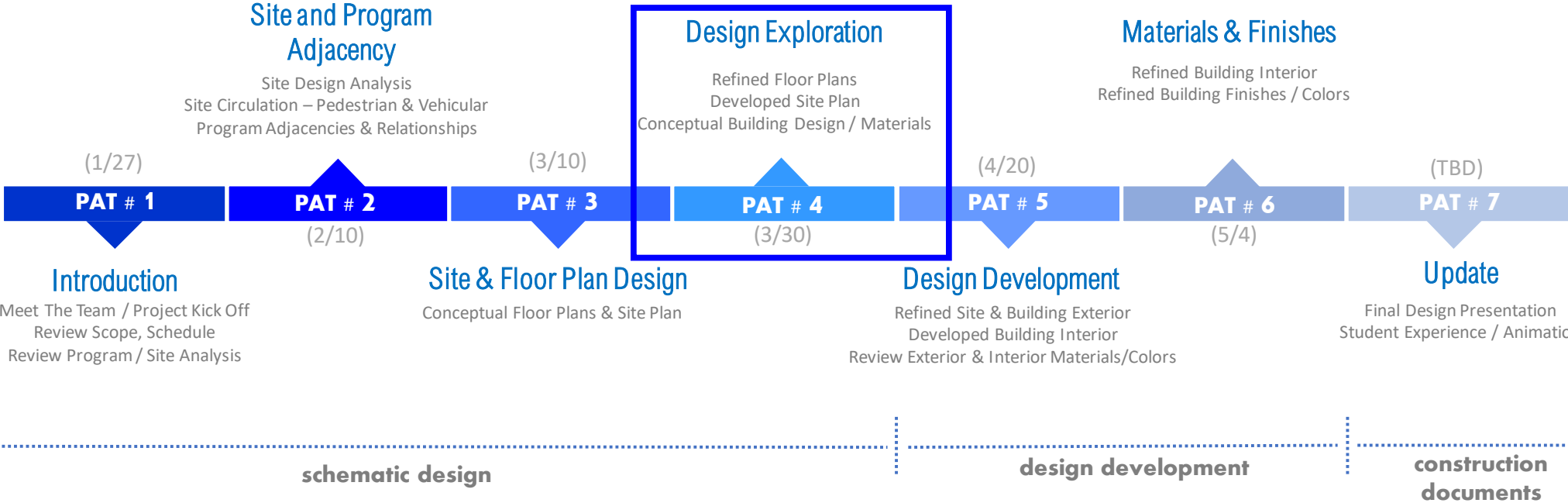
We take these with us moving forward



OVERALL PROJECT SCHEDULE



PAT SCHEDULE DETAIL (meetings 3:30 PM - 5:30 PM)



PAT BUILDING DESIGN PROCESS

PAT # 1



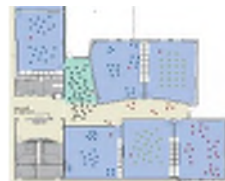
PAT # 2



PAT # 3



PAT # 4



PAT # 5



PAT # 6



conceptualize

develop

refine

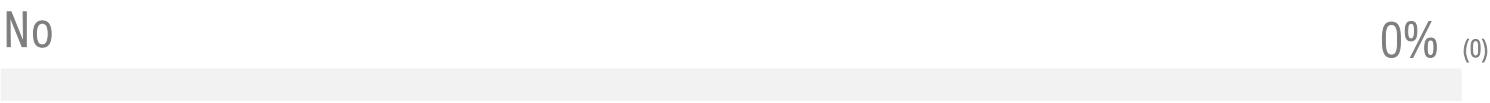
schematic design

design development

PAT #3 RIGHT DIRECTION POLL

Poll Result

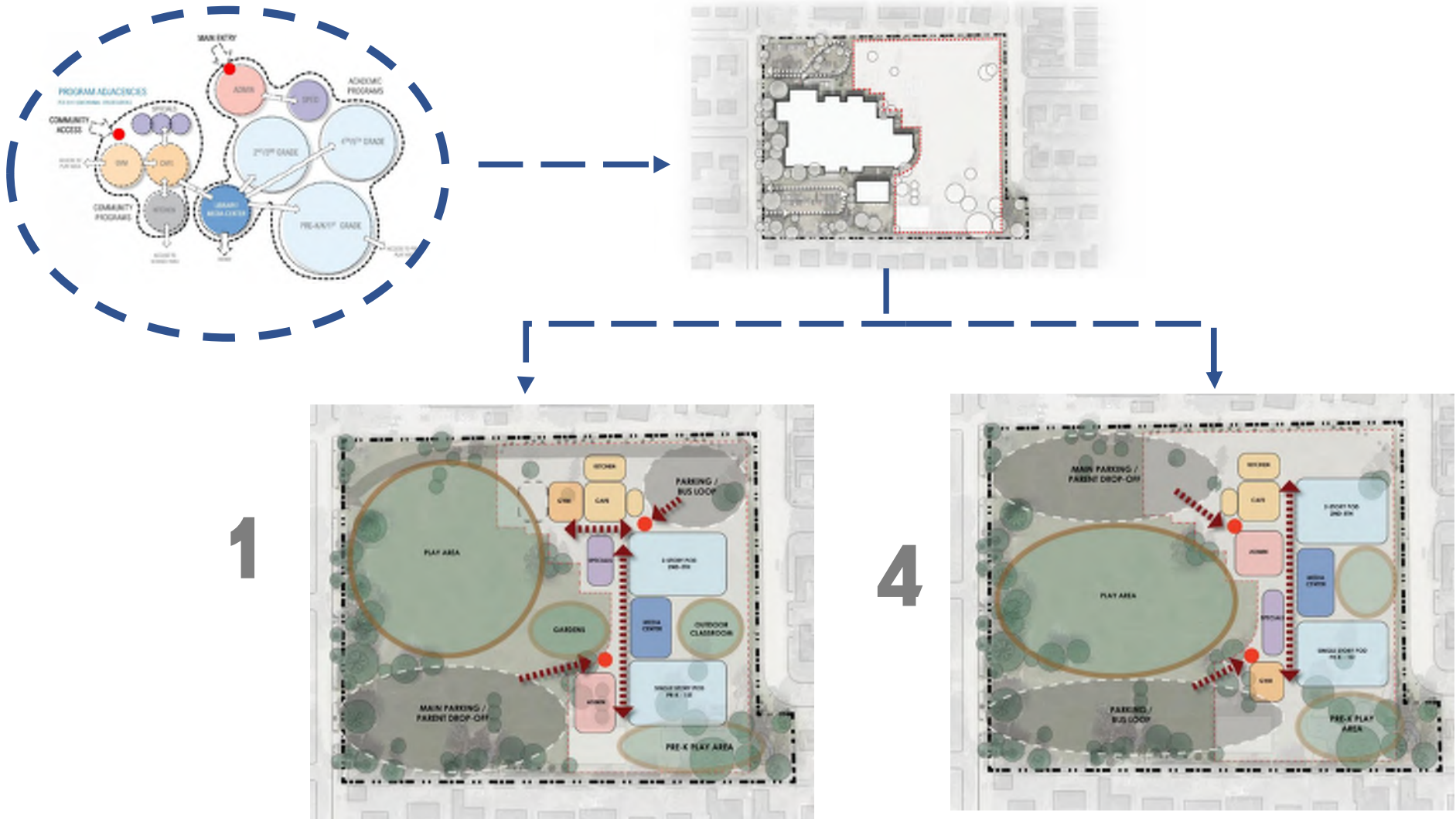
Are we heading in the right direction for the New Nottingham Elementary design after PAT#3?



** 5 PAT members did not vote

RECAP FROM PAT#3

WE EXPLORED 2 OPTIONS BASED ON PAT #2 FEEDBACK AND DISCUSSED



Comments on Option 1

- Preferred floor plan layout
- Good connection of gym-covered play-play fields
- Like covered play next to gym
- Good location of drop-off lane toward the south
- Disconnected playgrounds
- Locate spark park closer to the main play fields
- Good location of Science next to outdoor area
- Life Skill is great in the same wing as PK and K
- Great layout of grades for STARR testing
- Possibly good to separate PK/K playground from older kids

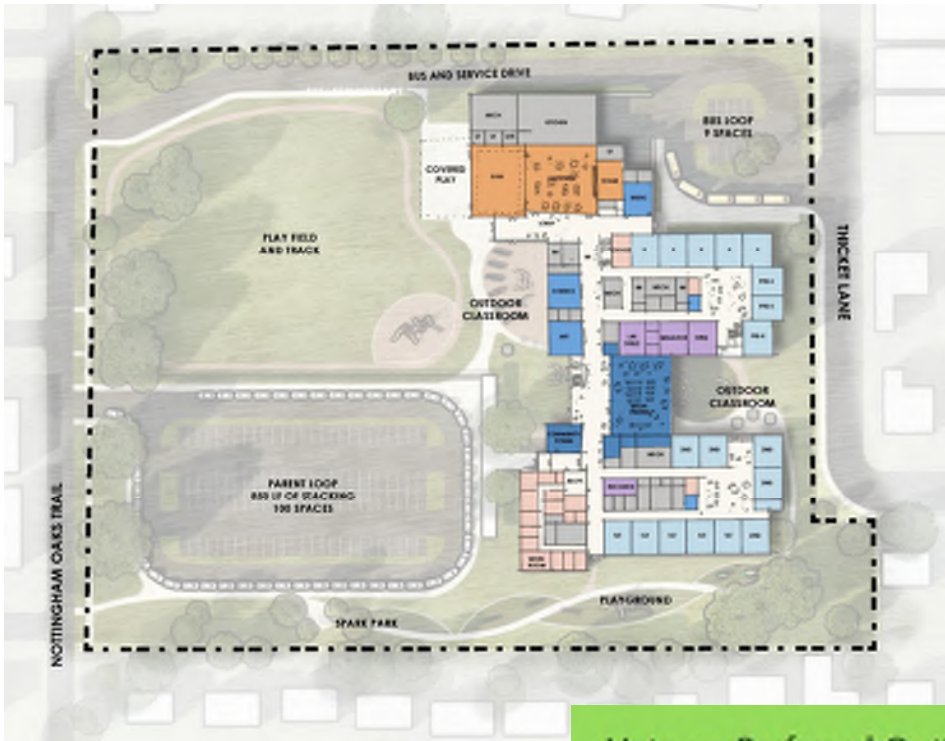


COMMENTS ON OPTION 4

- Like connected play areas
- Issue with gym connection to play fields
- Drop-off lane location to close to church
- Prefer having grades 3, 4 and 5 on their own for better flow when doing testing
- Good connection of science classroom and outdoor area
- Like the library in between the academic wings
- Maximize daylighting to all learning areas
- Concerns with having parent entry too close to Memorial



VOTED ON PREFERRED OPTION



Option 1 (11 votes)



Option 4 (9 votes)

Vote on Preferred Option in Progress

Attendees are now viewing questions20 of 30 (66%) voted

1. Vote on your preferred Site Program Organization Concept?

Option 1

(11) 55%

Option 4

(9) 45%

PAUSE AND REVIEW

COMMENTS —▶

FROM OPTION 1

- Preferred floor plan layout
- Good connection of gym-covered play-play fields
- Like covered play next to gym
- Good location of drop-off lane toward the south
- Disconnected playgrounds
- Locate spark park closer to the main play fields
- Good location of Science next to outdoor area
- Life Skill is great in the same wing as PK and K
- Great layout of grades for STARR testing
- Possibly good to separate PK/K playground from older kids

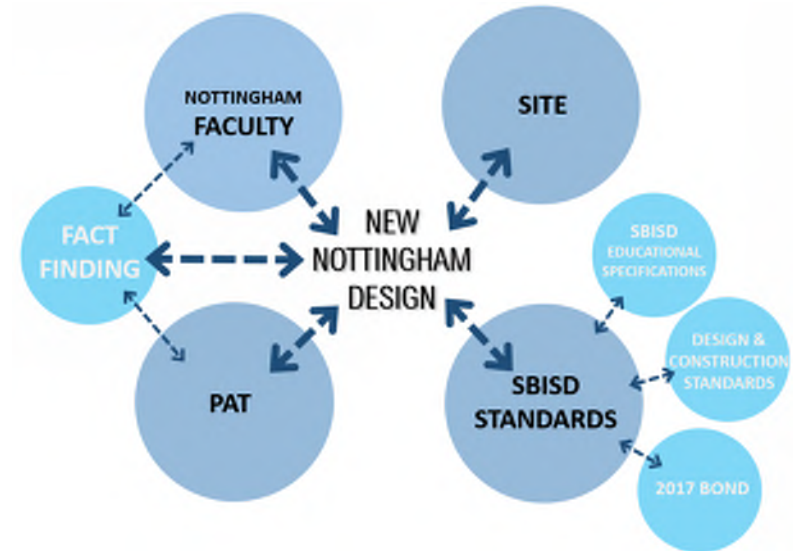
FROM OPTION 4

- Like connected play areas
- Issue with gym connection to play fields
- Drop-off lane location to close to church
- Prefer having grades 3, 4 and 5 on their own for better flow when doing testing
- Good connection of science classroom and outdoor area
- Like the library in between the academic wings
- Maximize daylighting to all learning areas
- Concerns with having parent entry too close to Memorial

LENS FILTERS —▶

- 2017 BOND
- EDUCATION SPECIFICATIONS
- DESIGN & CONSTRUCTION STANDARDS
- SITE CONSTRAINTS
- FACT FINDING
- GUIDING PRINCIPLES

DESIGN RESPONSE

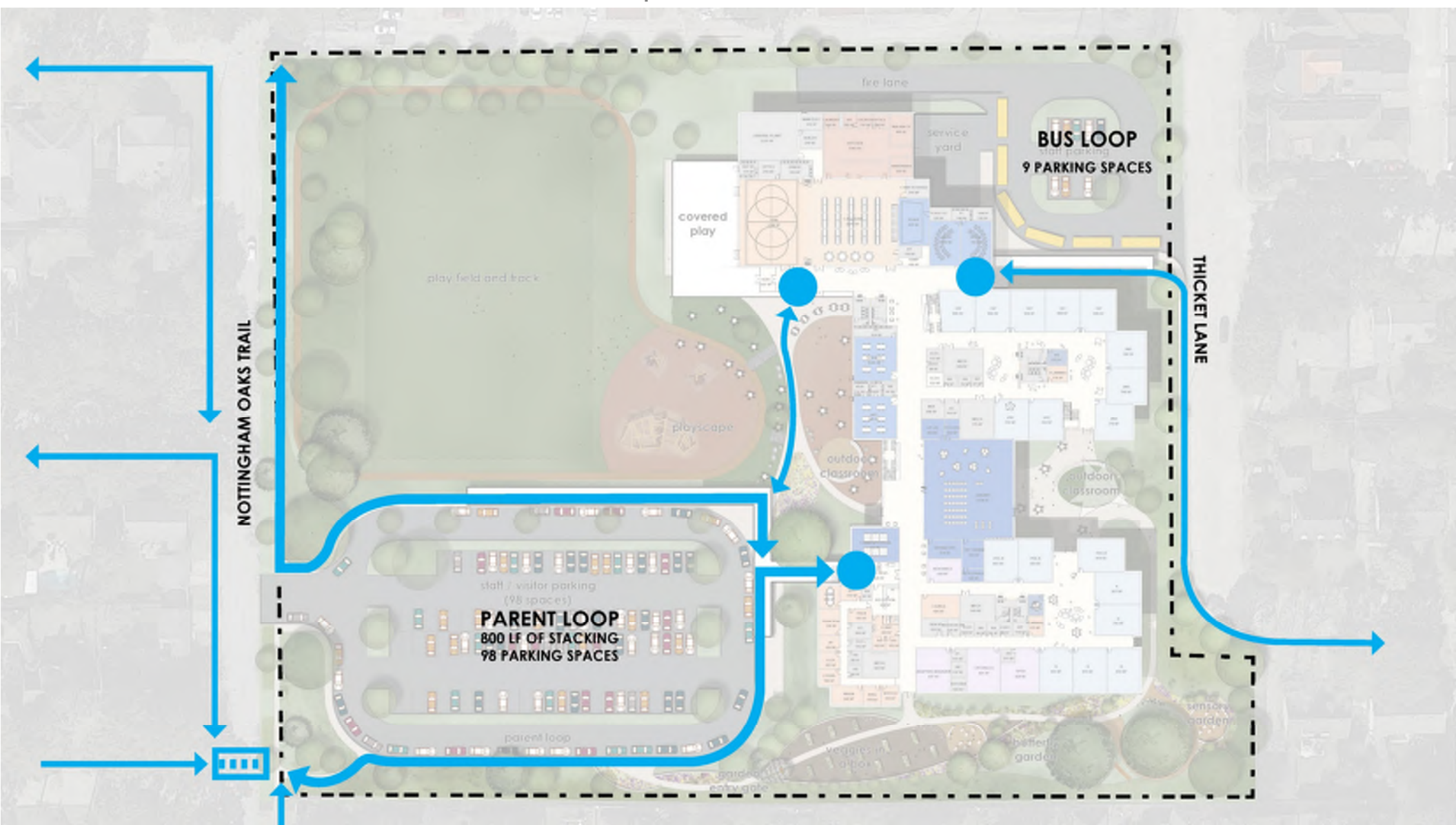


DEVELOPED SITE PLAN CONCEPT

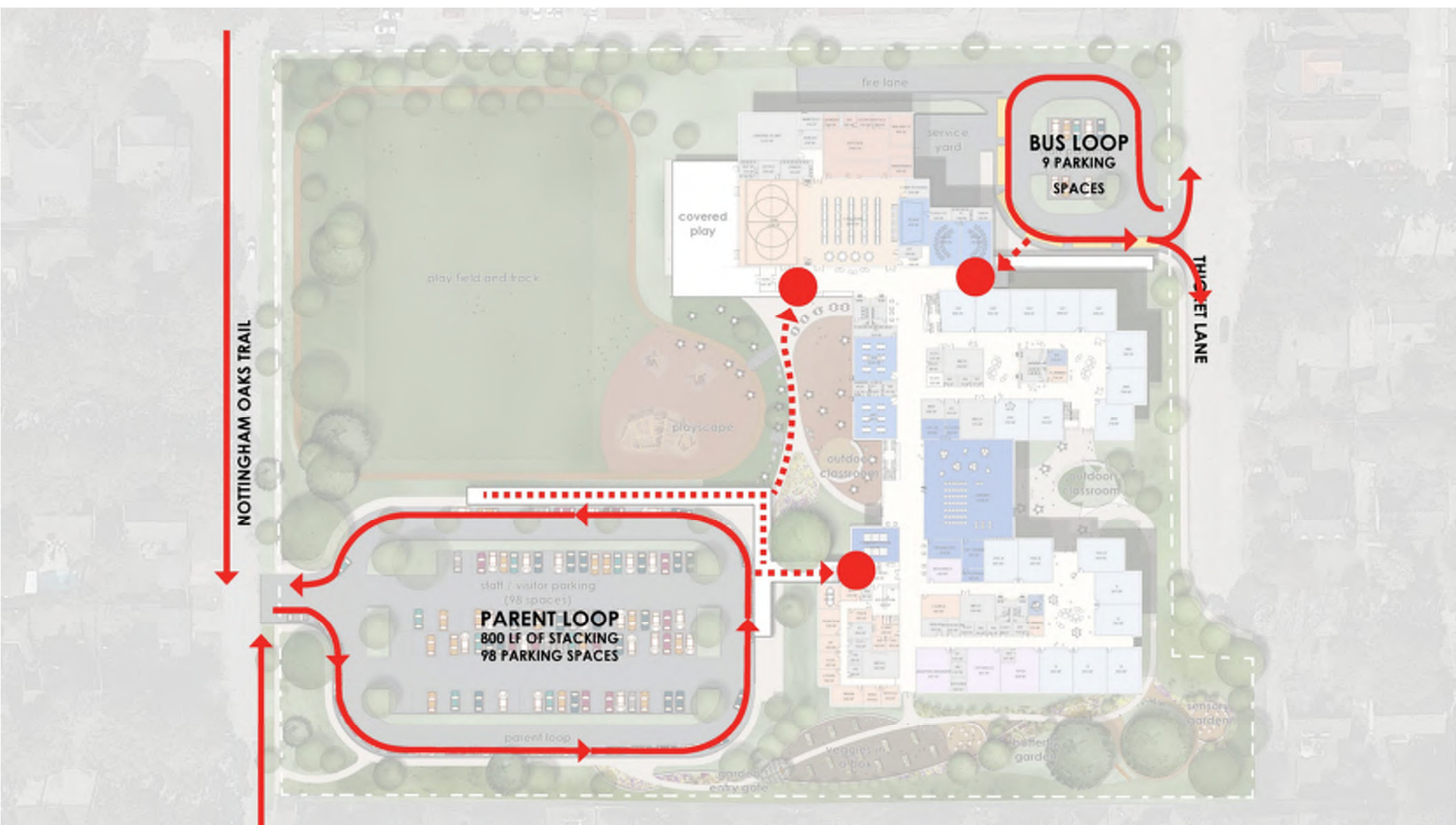


NOTTINGHAM ELEMENTARY SCHOOL

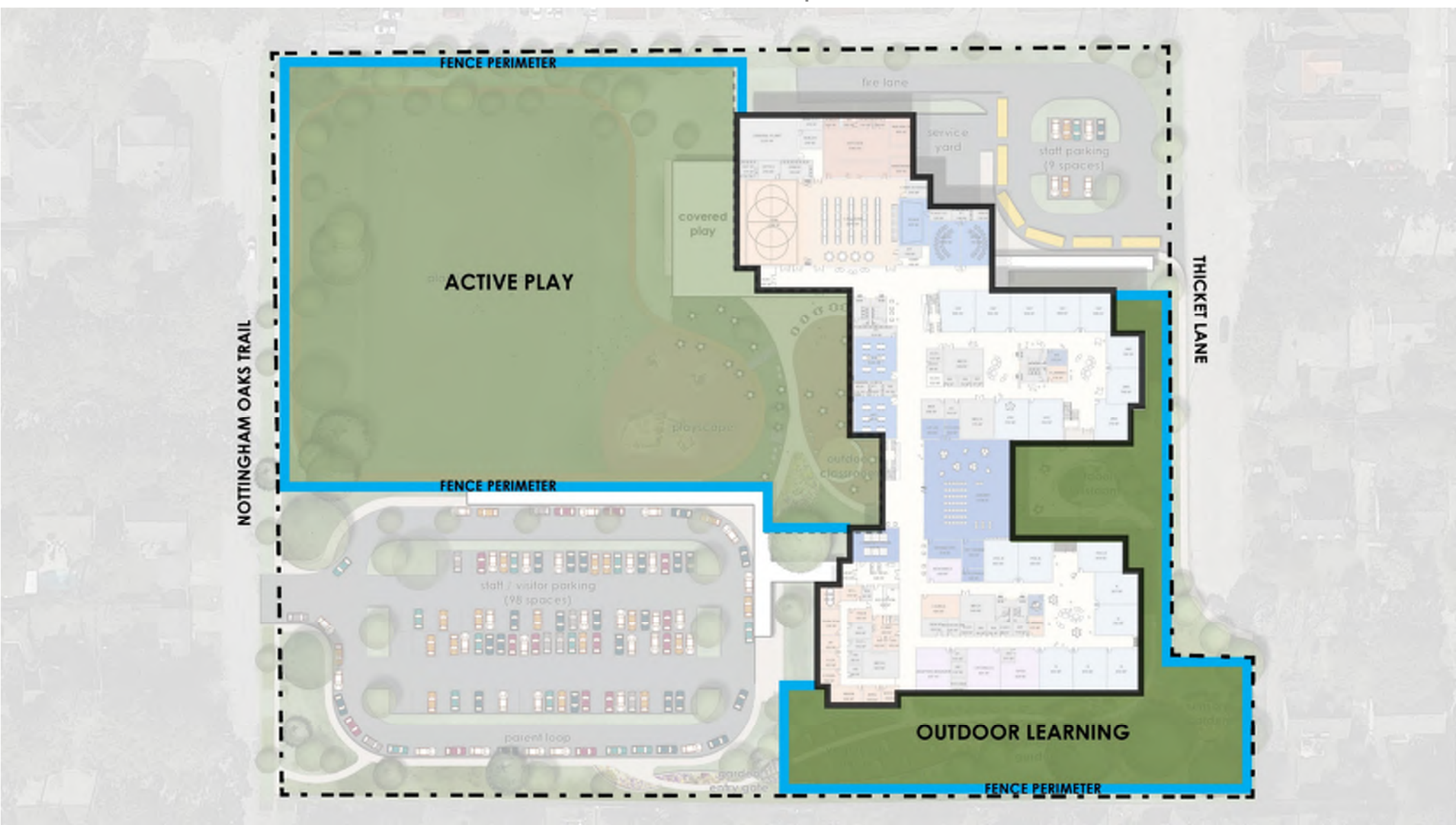
DEVELOPED SITE PLAN CONCEPT: pedestrian circulation



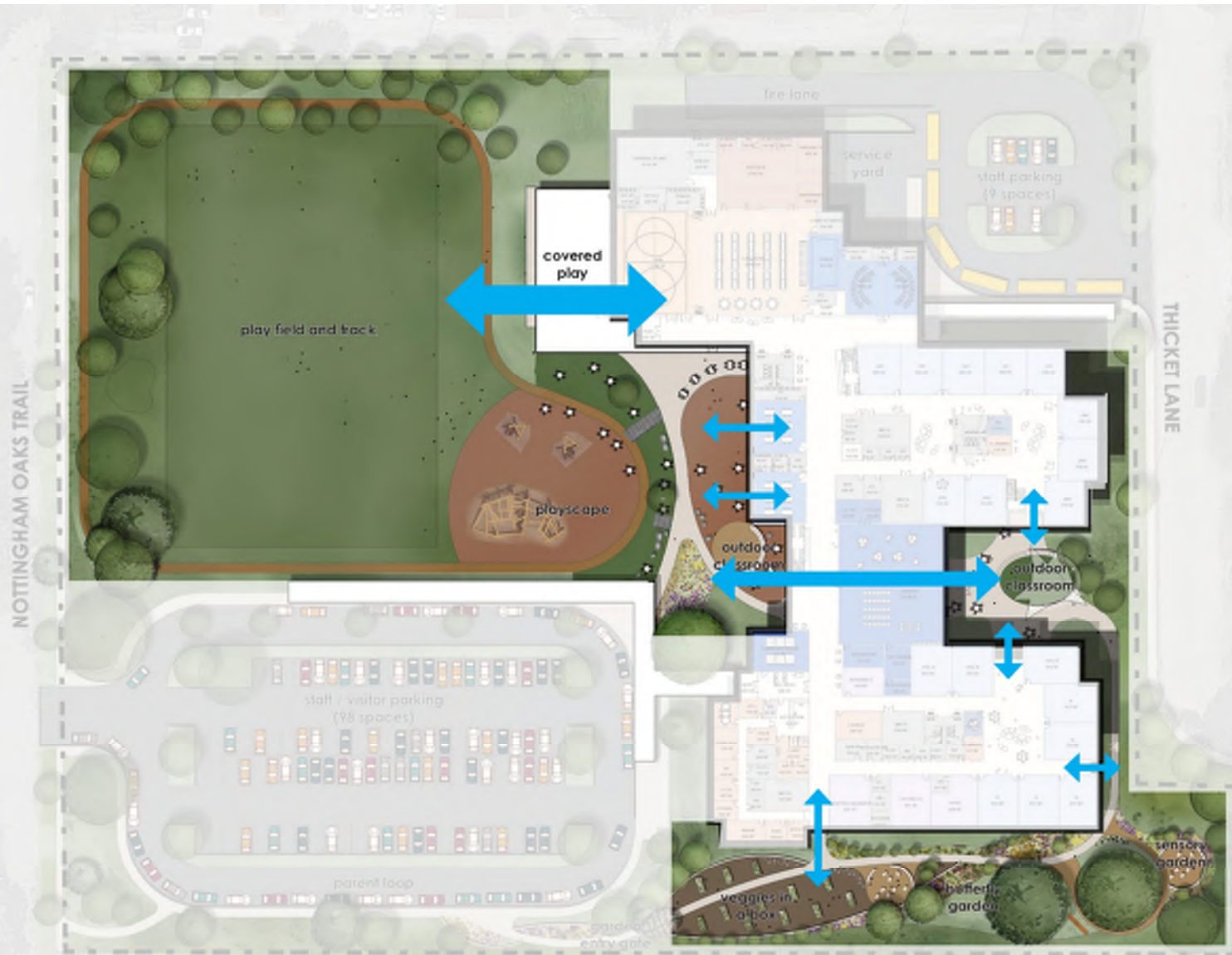
DEVELOPED SITE PLAN CONCEPT: vehicular circulation



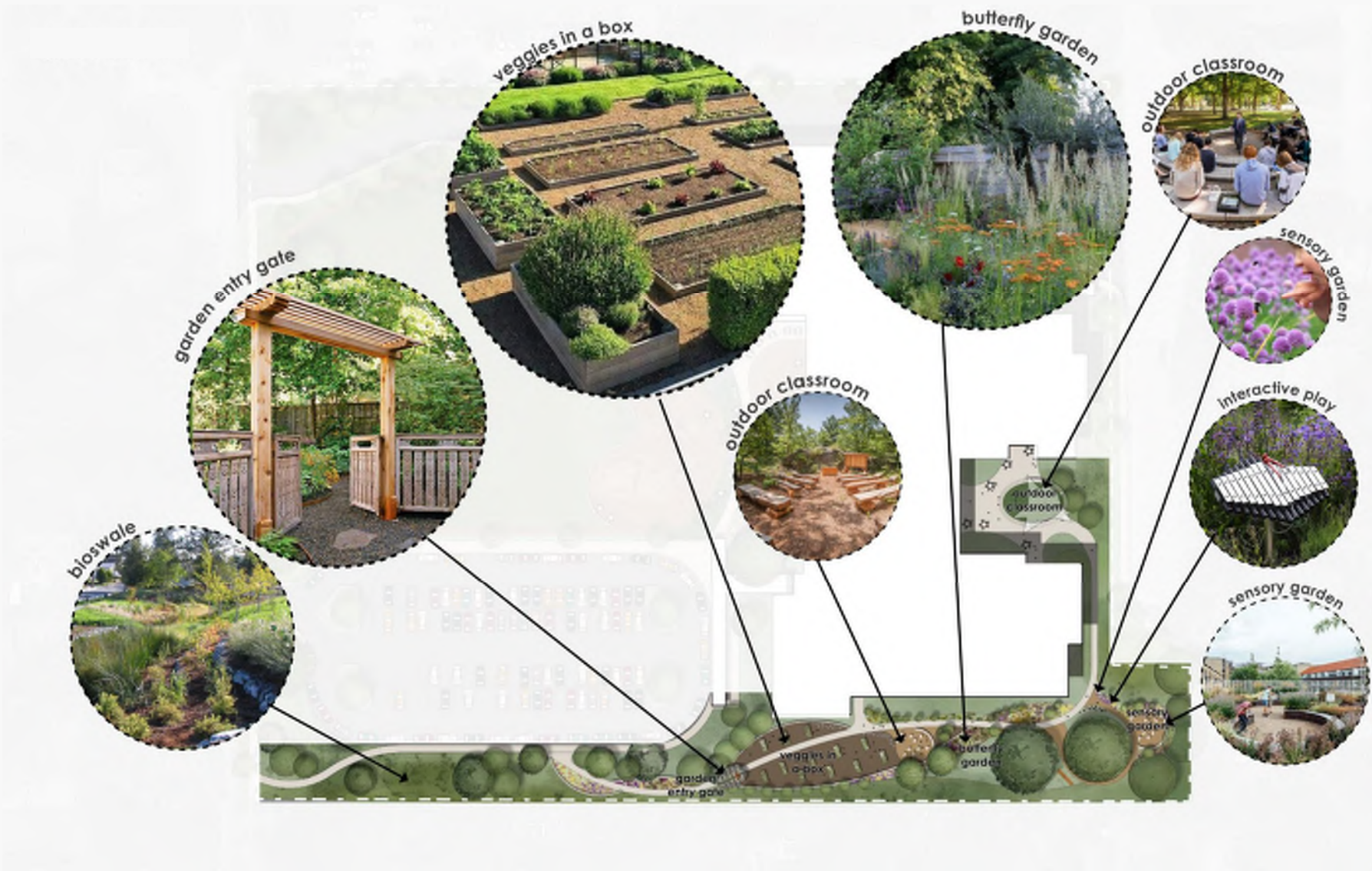
DEVELOPED SITE PLAN CONCEPT: outdoor space



DEVELOPED SITE PLAN CONCEPT: outdoor space



DEVELOPED SITE PLAN CONCEPT: garden areas & outdoor classrooms



DEVELOPED SITE PLAN CONCEPT: active play / playgrounds / community events



DEVELOPED SITE PLAN CONCEPT: overall site plan layout



REFINED FLOOR PLANS: first floor plan



NOTTINGHAM ELEMENTARY SCHOOL

REFINED FLOOR PLANS: first floor plan



NOTTINGHAM ELEMENTARY SCHOOL

REFINED FLOOR PLANS: first floor plan



NOTTINGHAM ELEMENTARY SCHOOL

REFINED FLOOR PLANS: first floor plan



NOTTINGHAM ELEMENTARY SCHOOL

REFINED FLOOR PLANS: first floor plan



NOTTINGHAM ELEMENTARY SCHOOL

REFINED FLOOR PLANS: first floor plan



NOTTINGHAM ELEMENTARY SCHOOL

REFINED FLOOR PLANS: first floor plan



NOTTINGHAM ELEMENTARY SCHOOL

REFINED FLOOR PLANS: first floor plan



NOTTINGHAM ELEMENTARY SCHOOL

REFINED FLOOR PLANS: second floor plan



ENLARGED FLOOR PLAN: admin, academic wings, library and specials

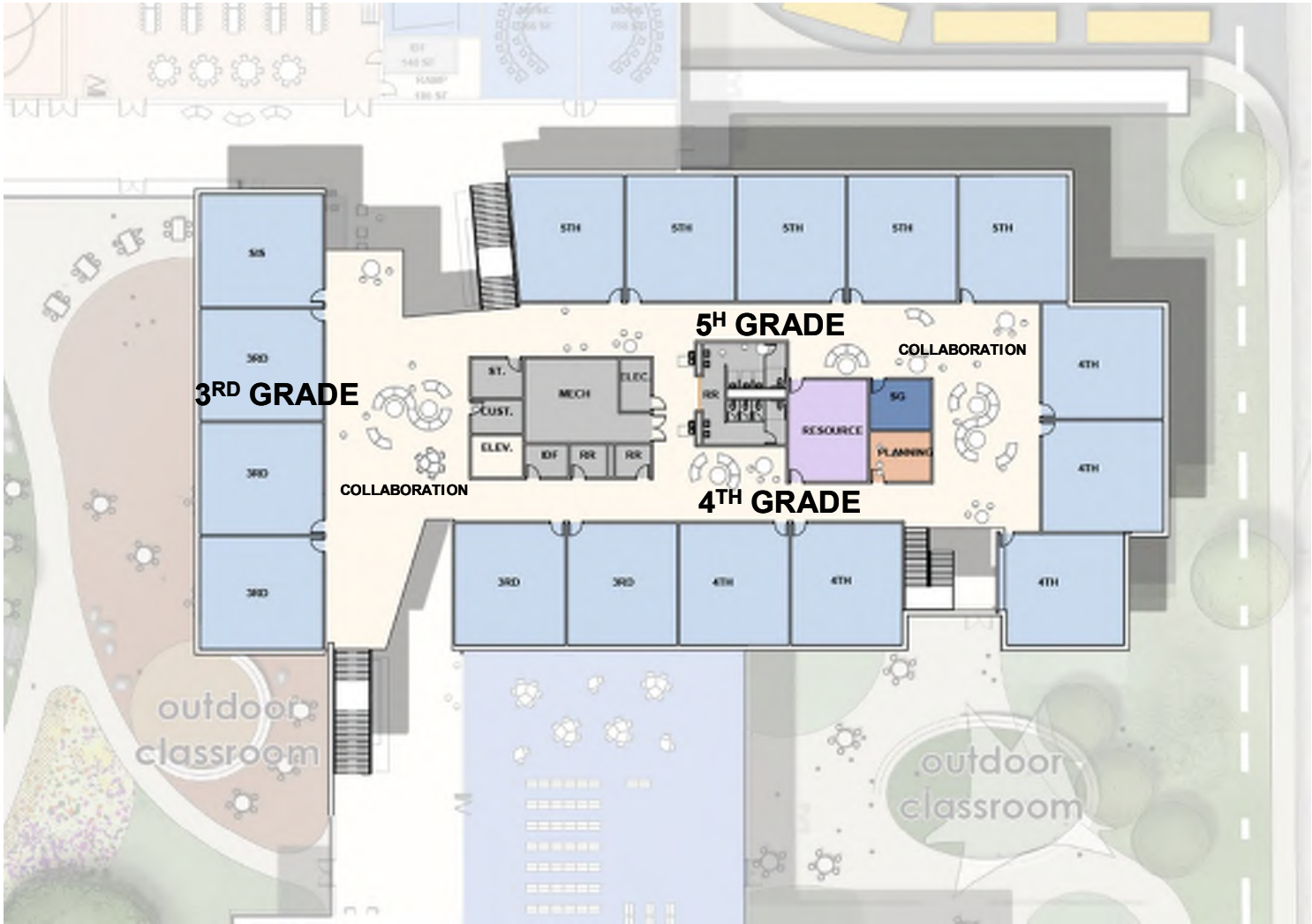


NOTTINGHAM ELEMENTARY SCHOOL

ENLARGED FLOOR PLAN: gym, cafeteria and music



ENLARGED FLOOR PLAN: second floor (3rd – 5th grades)



PAT GUIDING PRINCIPLES

We take these with us moving forward



SMALL GROUP DISCUSSIONS

SITE/ LAYOUT REVIEW AND DISCUSSION

BREAKOUT GROUPS (remain in zoom)

Group 1 – Jorge/Juan

Group 2 – Phillip / Melissa

Group 3 – Daniel / Brandon

Breakout Group Discussions: (20 minutes total)

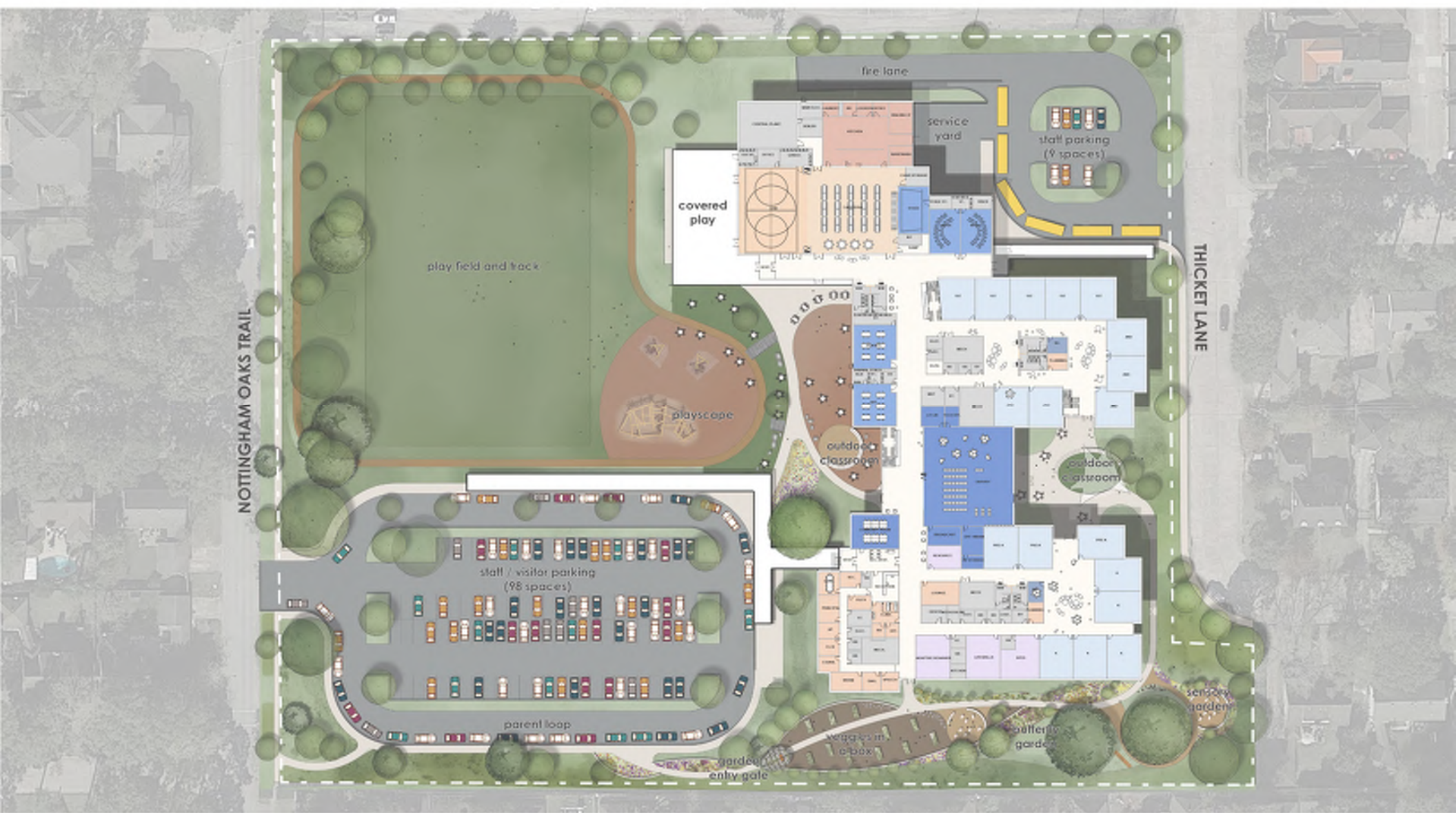
Site Plan 10 minutes

Floor Plan 10 minutes

Regroup, Discuss, Poll 15 minutes



PAT SITE AND FLOOR PLAN REGROUP AND POLL



NOTTINGHAM ELEMENTARY SCHOOL

Exterior Character (✓ and ✗)

Spirit Images 1

Exterior Character (3 ✓ and 3 ✗ per person)

01

Entry Plaza Warm Brick and Masonry

02

Sloped Roofs Warm Wood and Glass

03

NOTTINGHAM ELEMENTARY SCHOOL | Spirit Images 1

Bold Entry Warm Brick and Metal

04

T. WHITCOMB ELEMENTARY

Low Entry Warm Modern

Spring Branch PBK

Spirit Images 1

11 - Green Check Mark
1 - Red X

4 - Green Check Mark
15 - Red X

9 - Green Check Mark
6 - Red X

17 - Green Check Mark
0 - Red X

Exterior Character — 17 Green Check Marks

Spirit Images 1



Exterior Character (✓ and ✗)

Spirit Images 2

Exterior Character (3 ✓ and 3 ✗ per person)

05

Modern Eclectic Metal and Wood

06

Bold Entry Metal and Wood Striking Facade

07

Traditional Bold Entry Brick and Stone

NOTTINGHAM ELEMENTARY SCHOOL | Spirit Images 1

08

Low Entry Metal and Wood Striking Facade

Spring Branch PRK

Spirit Images 2

6 - Green Check Mark
5 - Red X

9 - Green Check Mark
5 - Red X

1 - Green Check Mark
18 - Red X

15 - Green Check Mark
2 - Red X

Exterior Character — 15 Green Check Marks

Spirit Images 2



Exterior Character (✓ and ✗)

Spirit Images 3

Exterior Character (3 ✓ and 3 ✗ per person)



NOTTINGHAM ELEMENTARY SCHOOL | Spirit Images 1



Spring Branch PRK

23 - Green Check Mark
(Including 2 hearts)
0 - Red X

0 - Green Check Mark
15 - Red X

1 - Green Check Mark
12 - Red X

1 - Green Check Mark
8 - Red X

Exterior Character — 23 Green Check Marks

Spirit Images 3



Concept Exterior Design COLOR 1

Exterior Design



Concept Exterior Design COLOR 2

Exterior Design



NOTTINGHAM ELEMENTARY SCHOOL

Concept Exterior Design COLOR 1

Exterior Design



Concept Exterior Design COLOR 2

Exterior Design



NOTTINGHAM ELEMENTARY SCHOOL

COMING UP ON PAT #5...

April 20, 2021 3:30 PM – 5:30 PM

Design Development

Refined Site & Building Exterior

Developed Building Interior

Review Exterior & Interior Materials/Colors

PAT # 5



PAT # 6



NEXT STEPS

Closing Remarks

ARE WE HEADING IN THE RIGHT DIRECTION FOR THE NEW NOTTINGHAM DESIGN AFTER PAT #4?

Next PAT meeting

April 20, 2021 3:30 PM – 5:30 PM

Design Development

Refined Site & Building Exterior

Developed Building Interior

Review Exterior & Interior Materials/Colors



Thank you!

Nottingham Elementary School