

A word that best describes how you're feeling about NEXT STEPS in the process is:



## OBJECTIVES

- Final District Initiative Thoughts
- Tier Prioritization Outdoor Learning, Building Improvement, Safety & Security
- Values & Guiding Principles
- Project Type Prioritization

01

02

03

04

05

06

07

Dr. Reid &  
Duggan  
Harman

Racial &  
Educational  
Justice

Outdoor  
Learning &  
Athletics

Building  
Improvements

Safety &  
Security

Guiding  
Principles

Project Type  
Prioritization

Time  
Out

Q & A



# Racial & Educational Justice

**Chris Bigelow - Executive Director**

**Ayva Thomas - Asst. Director**

# Racial and Educational Justice

- Introduction
- Roles and Responsibilities
- Racial and Educational Justice Background
  - Department name change

## Racial and Educational Justice: Where we are today

- What does justice mean?
- What does justice mean to Northshore School District?



Outdoor Learning &

Athletics

**Steve Simpson**

Facilities, Grounds, & Sports Complex Supervisor | NSD Support Services

# Outdoor Learning & Athletics

The background of the slide is a photograph of an outdoor soccer field. A soccer goal is visible on the left side of the frame. The field is green and well-maintained. In the background, there is a dense line of trees under a clear blue sky with a few wispy clouds. The overall scene is bright and sunny.

## **DETERMINING NEED**

**Safety**

**Community Relationships - Revenue**

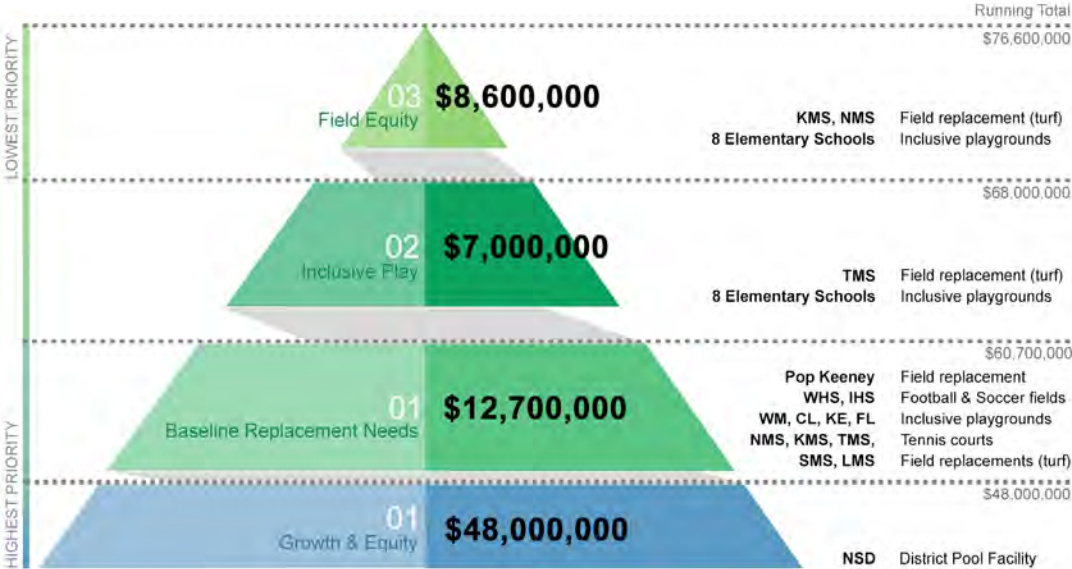
**Reduce Annual Maintenance Costs**

**Equity Between Facilities**



# Outdoor Learning & Athletics

## TIER 3 PRIORITY





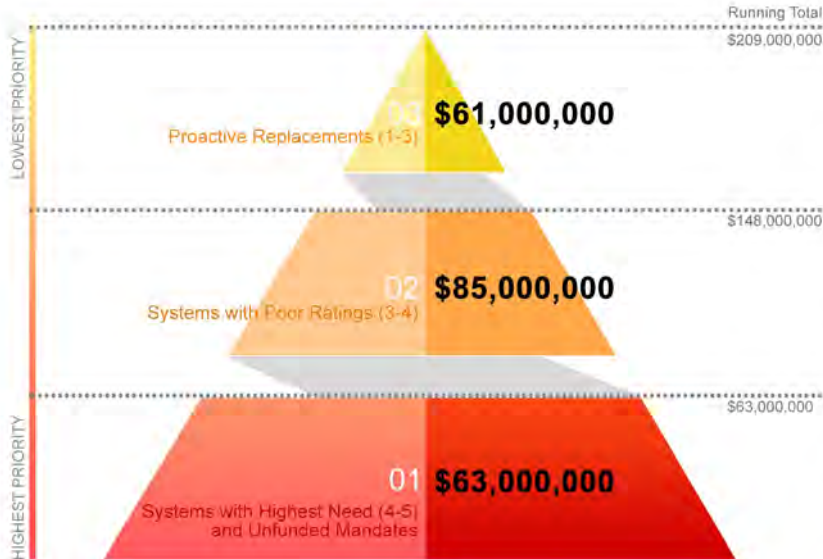


**Grant Granger**

Account Executive, Technical Services | McKinstry

# Building Improvement

## PROACTIVE APPROACH



All tiers include the following project types by need:

Bleachers  
Control Systems  
Conveyance  
Domestic Water Distribution  
Door/Hardware  
Electrical Distribution  
Exterior Walls and Windows  
Fire/Life Safety  
Flooring  
HVAC System  
Interior Ceilings  
Interior Walls  
Kitchen Equipment  
Lighting  
Lockers  
Roofing and Gutter System  
Security

Tier 1 also includes long-term deferred maintenance and unfunded mandates:

Septic Transition  
House Bill 1257 Energy Upgrades

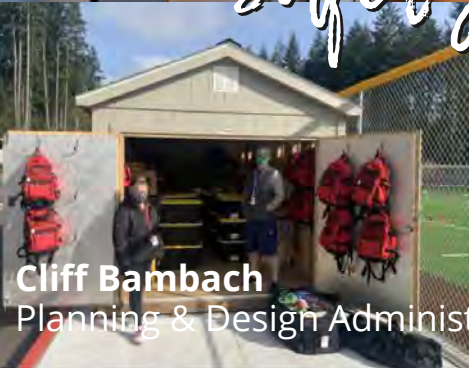
# Building Improvement

## PROJECT LIST

	HVAC	Lighting Electrical	Fire Life Safety	Roofing	Flooring	Other	Running Total
02	Bothell High School Canyon Park Middle School Cottage Lake Elementary Crystal Springs Elementary Hollywood Hill Elementary Inglemoor High School Kenmore Middle School Kokanee Elementary Leota Middle School Moorlands Elementary Northshore Middle School Skyview Middle School Sorenson ECC Timbercrest Middle School Westhill Elementary Woodin Elementary	Bear Creek Elementary Bothell High School Cottage Lake Elementary Fernwood Elementary Frank Love Elementary Kenmore Elementary Lockwood Elementary Sunrise Elementary Woodmoor Elementary	Timbercrest Middle School	Canyon Park Middle School Frank Love Elementary Hollywood Hill Elementary Inglemoor High School Moorlands Elementary	Canyon Park Middle School Frank Love Elementary Hollywood Hill Elementary Inglemoor High School Moorlands Elementary		\$148,000,000
01	Bear Creek Elementary Bothell High School Canyon Park Middle School Fernwood Elementary Hollywood Hill Elementary Inglemoor High School Leota Middle School Maywood Hills Elementary Moorlands Elementary Sunrise Elementary Woodin Elementary	Canyon Creek Elementary Hollywood Hill Elementary Wellington Elementary		Cottage Lake Elementary Leota Middle School Maywood Hills Elementary	Canyon Park Middle School	Timbercrest Middle School East Ridge Elementary Cottage Lake Elementary Bear Creek Elementary Leota Middle School Wellington Elementary Kokanee Elementary Fernwood Elementary Bothell High School Inglemoor High North Creek High Northshore Middle SAS Skyview Middle School Timbercrest Middle School Woodinville High School Woodmoor Elementary	\$63,000,000



# *Safety & Security*

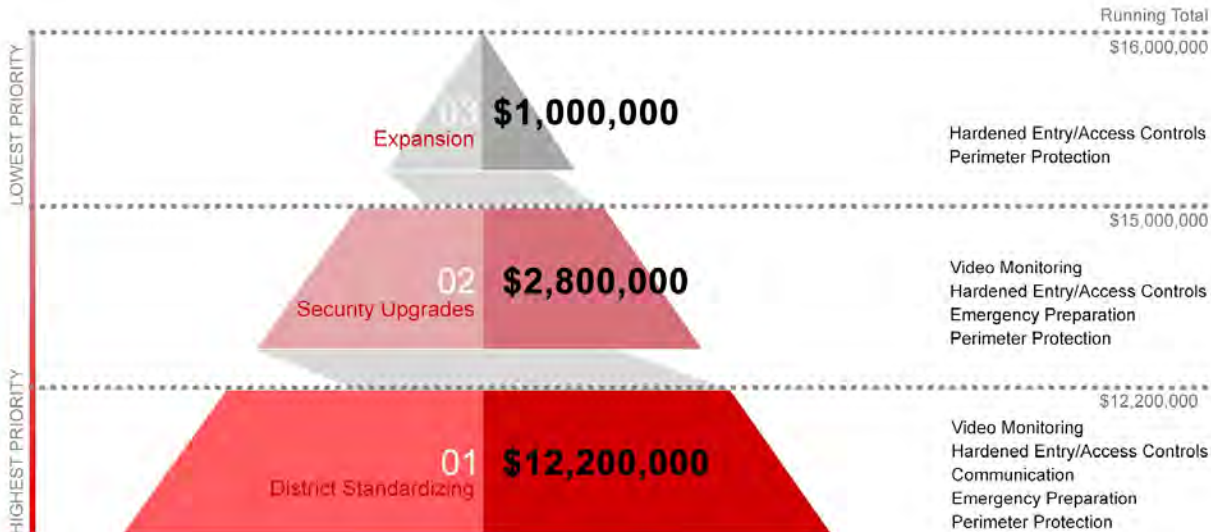


**Cliff Bambach**

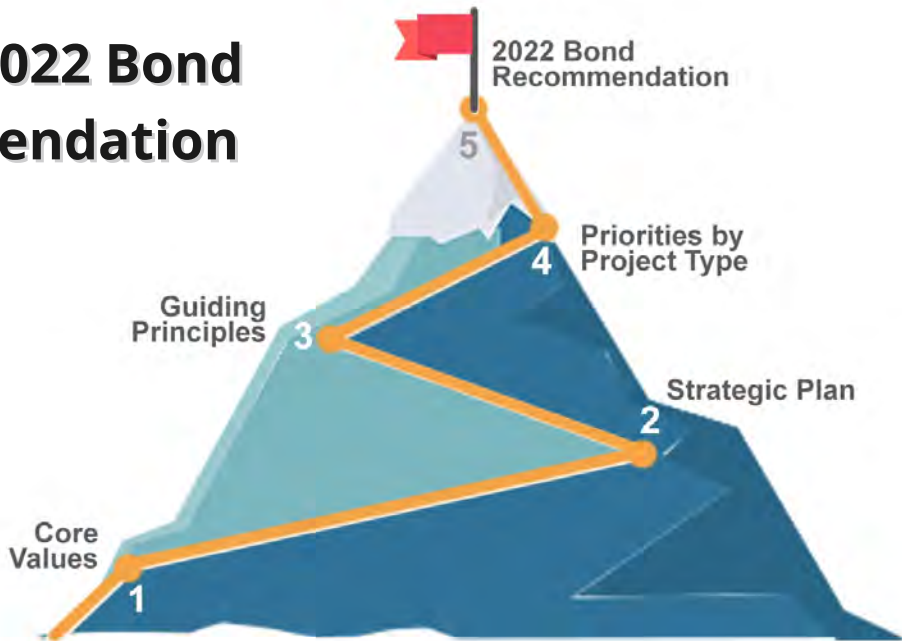
Planning & Design Administrator | NSD Capital Projects

# Safety & Security

## TIER 3 PRIORITY



# Path to 2022 Bond Recommendation





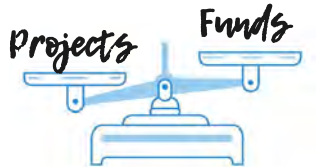
# Guiding Principles





For guiding principles to be effective they have to be **verbs**.  
By articulating guiding principles with action you get  
a clear idea of how to act in a difficult situation.

For instance, when there are more projects than there are funds.



Reduce

Distribute

Improve

Support

Provide

Address



With keeping Northshore School District's values in mind, place a dot on the **TOP FIVE** principles you believe the 2022 bond package recommendation should address:

Add capacity to  
district buildings

Reduce number of  
students in  
portables

Expand student  
health programs

Improve Special  
Education programs

Improve outdoor  
learning facilities

Improve building  
conditions

Distribute bond  
resources  
geographically

Improve Technology  
Infrastructure

Add district-wide  
resources

Address multiple  
issues with each  
project

Improve facility  
functional  
performance

Support projects for  
students furthest from  
educational justice

Improve security  
Systems

Improve equity  
among district-wide  
facilities

Something else?  
(please list and place  
one of your 3 dots)



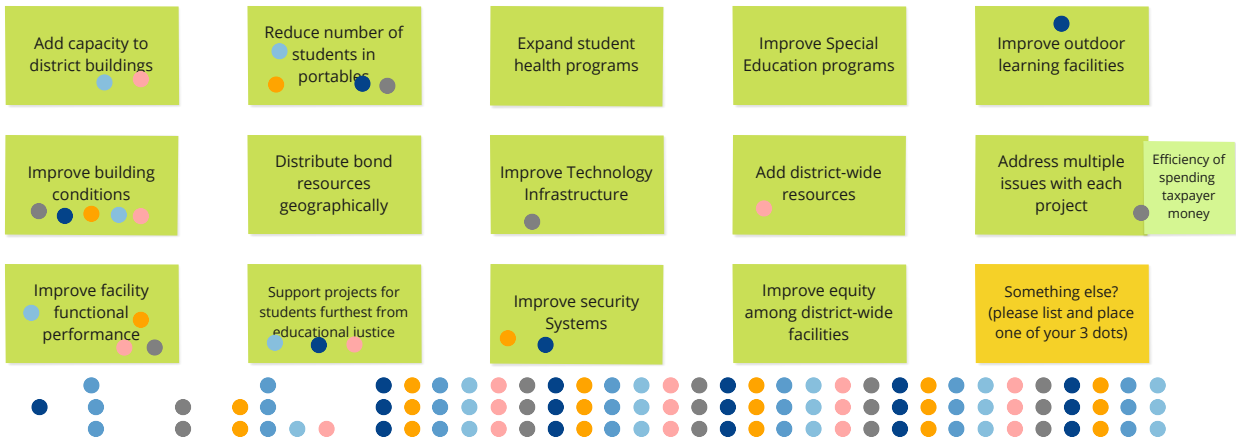
When reporting out be prepared to explain what each choice means to your group.



# Break Out!

**Dot Voting**

With keeping Northshore School District's values in mind, place a dot on the **TOP FIVE** principles you believe the 2022 bond package recommendation should address:



When reporting out be prepared to explain what each choice means to your group.

With keeping Northshore School District's values in mind, place a dot on the **TOP FIVE** principles you believe the 2022 bond package recommendation should address:

Add capacity to district buildings	Reduce number of students in portables	Expand student health programs	Improve Special Education programs	Improve Outdoor learning facilities
Improve building conditions	Distribute bond resources geographically	Improve Technology Infrastructure	Add district-wide resources	Address multiple issues with each project
Improve facility functional performance	Support projects for students furthest from educational justice	Improve security systems	Improve equity among district-wide facilities	Something else? (please list and place one of your 3 dots)

When reporting out be prepared to explain what each choice means to your group.

With keeping Northshore School District's values in mind, place a dot on the **TOP FIVE** principles you believe the 2022 bond package recommendation should address:

Add capacity to district buildings ●	Reduce number of students in portables ● ●	Expand student health programs	Improve Special Education programs	Improve outdoor learning facilities ●
Improve building conditions ● ●	Distribute bond resources geographically ● ● ●	Improve Technology Infrastructure ● ● ● ●	Add district-wide resources ●	Address multiple issues with each project ● ● ●
Improve facility functional performance ●	Support projects for students furthest from educational justice ● ● ● ●	Improve security Systems	Improve equity among district-wide facilities ● ● ●	Something else? (please list and place one of your 3 dots) ●



When reporting out be prepared to explain what each choice means to your group.

With keeping Northshore School District's values in mind, place a dot on the **TOP FIVE** principles you believe the 2022 bond package recommendation should address:

Add capacity to district buildings



Reduce number of students in portables



Expand student health programs

Improve Special Education programs



Improve outdoor learning facilities



Improve building conditions



Distribute bond resources geographically

Improve Technology Infrastructure

Add district-wide resources



Address multiple issues with each project

Improve facility functional performance

Support projects for students furthest from educational justice



Improve security Systems

Improve equity among district-wide facilities



Something else?  
(please list and place one of your 3 dots)



When reporting out be prepared to explain what each choice means to your group.



With keeping Northshore School District's values in mind, place a dot on the **TOP FIVE** principles you believe the 2022 bond package recommendation should address:

Add capacity to district buildings

Reduce number of students in portables

Expand student health programs

Improve Special Education programs

Improve outdoor learning facilities

Improve building conditions

Distribute bond resources geographically

## Improve Technology Infrastructure

Add district-wide resources

Address multiple issues with each project

Improve facility functional performance

Support projects for students furthest from educational justice

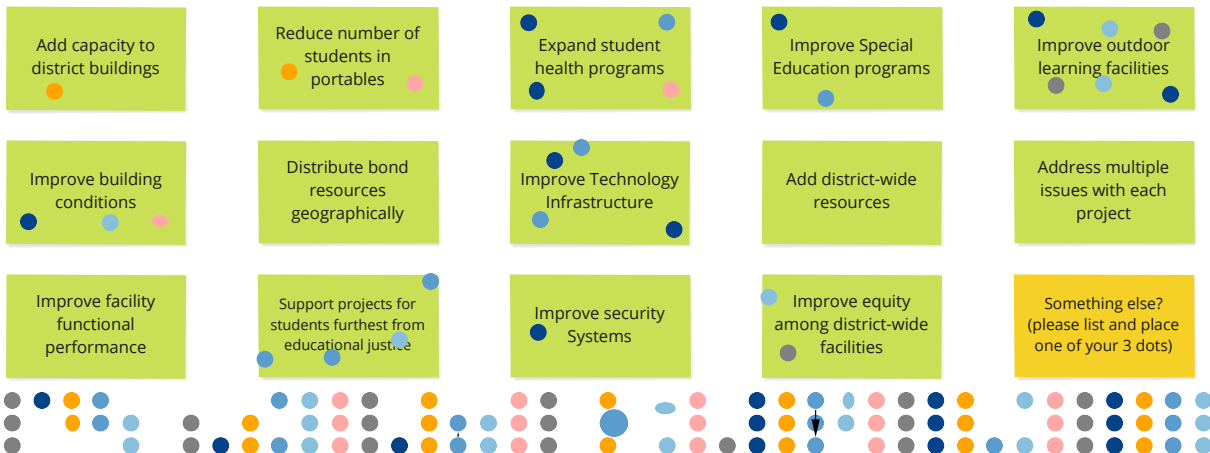
## Improve security Systems

- Improve equity among district-wide facilities

Something else?  
(please list and place  
one of your 3 dots)

When reporting out be prepared to explain what each choice means to your group.

With keeping Northshore School District's values in mind, place a dot on the **TOP FIVE** principles you believe the 2022 bond package recommendation should address:



When reporting out be prepared to explain what each choice means to your group.

With keeping Northshore School District's values in mind, place a dot on the **TOP FIVE** principles you believe the 2022 bond package recommendation should address:

Add capacity to district buildings	Reduce number of students in portables	Expand student health programs	Improve Special Education programs	Improve outdoor learning facilities
Improve building conditions	Distribute bond resources geographically	Improve Technology Infrastructure	Add district-wide resources	Address multiple issues with each project
Improve facility functional performance	Support projects for students furthest from educational justice	Improve security Systems	Improve equity among district-wide facilities	Something else? (please list and place one of your 3 dots)

Sustainability and green design to reduce carbon

When reporting out be prepared to explain what each choice means to your group.

With keeping Northshore School District's values in mind, place a dot on the **TOP FIVE** principles you believe the 2022 bond package recommendation should address:

Add capacity to district buildings

Reduce number of students in portables

Expand student health programs

Improve Special Education programs

Improve outdoor learning facilities

Improve building conditions

Distribute bond resources geographically

Improve Technology Infrastructure

Add district-wide resources

Address multiple issues with each project

Improve facility functional performance

Support projects for students furthest from educational justice

Improve security Systems

Improve equity among district-wide facilities

Something else?  
(please list and place one of your 3 dots)

add experiential learning offerings



When reporting out be prepared to explain what each choice means to your group.

With keeping Northshore School District's values in mind, place a dot on the **TOP FIVE** principles you believe the 2022 bond package recommendation should address:

Add capacity to district buildings	Reduce number of students in portables	Expand student health programs	Improve Special Education programs	Improve outdoor learning facilities
Improve building conditions	Distribute bond resources geographically	Improve Technology Infrastructure	Add district-wide resources	Address multiple issues with each project
Improve facility functional performance	Support projects for students furthest from educational justice	Improve security Systems	Improve equity among district-wide facilities	Something else? (please list and place one of your 3 dots)

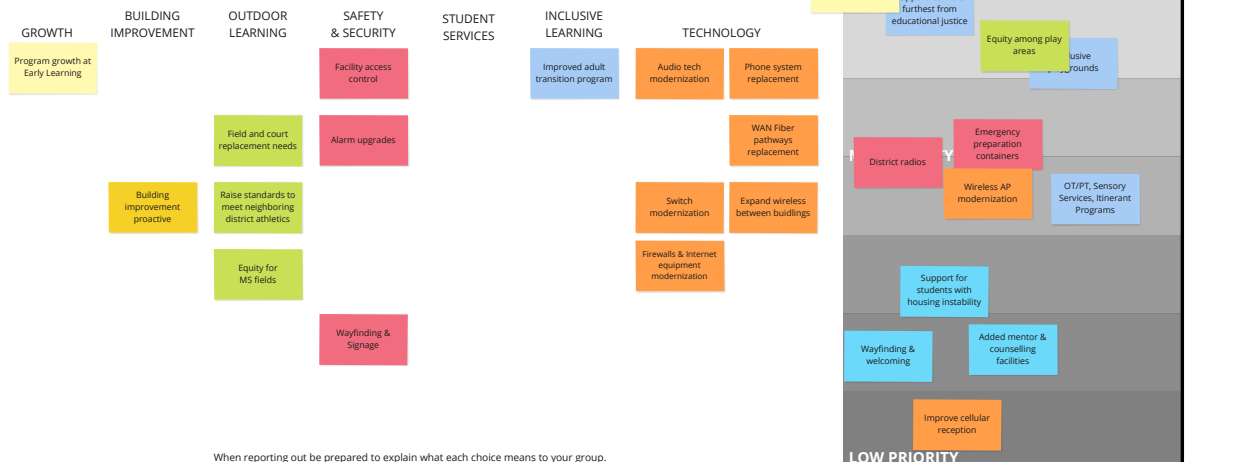
When reporting out be prepared to explain what each choice means to your group.



# Break Out!

**Stack Rank**

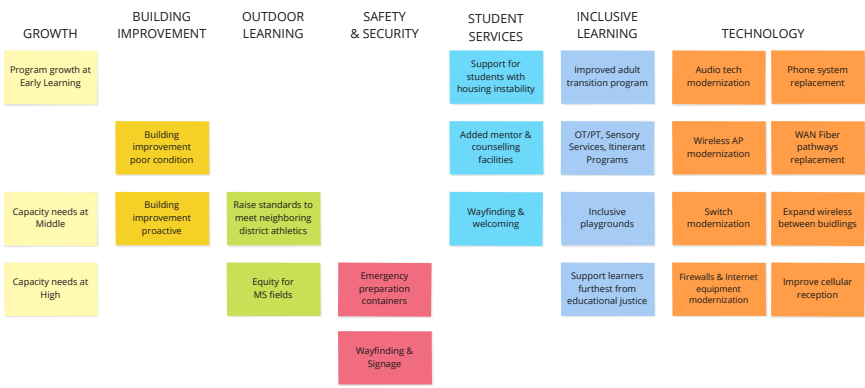
The following is a list of needs that have been identified in previous meetings. **Prioritize** them from highest to lowest by moving them to the right. **Rank** their sense of urgency high to low based on the GUIDING PRINCIPLES your team identified in the first breakout.



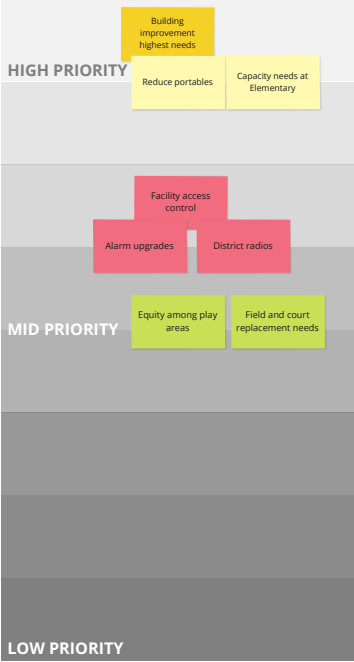
When reporting out be prepared to explain what each choice means to your group.



The following is a list of needs that have been identified in previous meetings. **Prioritize** them from highest to lowest by moving them to the right. **Rank** their sense of urgency high to low based on the GUIDING PRINCIPLES your team identified in the first breakout.



When reporting out be prepared to explain what each choice means to your group.



LOW PRIORITY

**Prioritize** them from highest to lowest by moving them to the right. **Rank** their sense of urgency high to low based on the GUIDING PRINCIPLES your team identified in the first breakout.

Priority Level	Need
HIGH PRIORITY	Building improvement highest needs
	Building improvement poor condition
	Capacity needs at Elementary
	Support learners furthest from educational justice
	Improved adult transition program
MID PRIORITY	Wayfinding & welcoming
	Wayfinding & Signage
	Improve cellular reception
LOW PRIORITY	Improve cellular reception
	Wayfinding & Signage

The following is a list of needs that have been identified in previous meetings. **Prioritize** them from highest to lowest by moving them to the right. **Rank** their sense of urgency high to low based on the GUIDING PRINCIPLES your team identified in the first breakout.

GROWTH      BUILDING IMPROVEMENT      OUTDOOR LEARNING      SAFETY & SECURITY      STUDENT SERVICES      INCLUSIVE LEARNING      TECHNOLOGY



When reporting out be prepared to explain what each choice means to your group.

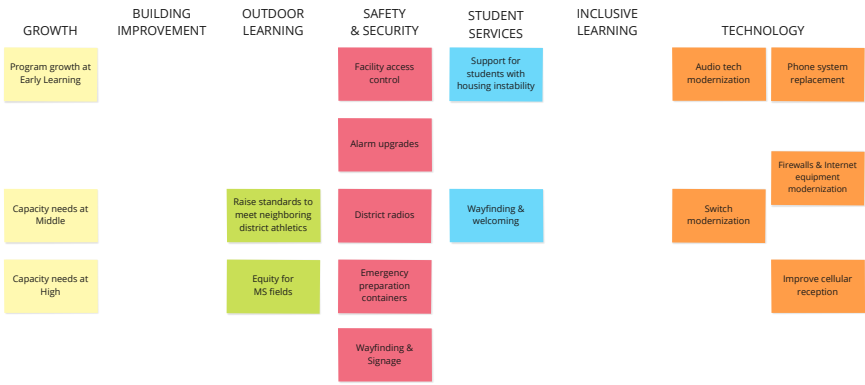
The following is a list of needs that have been identified in previous meetings. **Prioritize** them from highest to lowest by moving them to the right. **Rank** their sense of urgency high to low based on the GUIDING PRINCIPLES your team identified in the first breakout.

GROWTH	BUILDING IMPROVEMENT	OUTDOOR LEARNING	SAFETY & SECURITY	STUDENT SERVICES	INCLUSIVE LEARNING	TECHNOLOGY	
			Facility access control				Phone system replacement
Capacity needs at Elementary		Field and court replacement needs	Alarm upgrades	Added mentor & counselling facilities	OT/PT, Sensory Services, Itinerant Programs	Wireless AP modernization	WAN Fiber pathways replacement
Capacity needs at Middle	Building improvement proactive	Raise standards to meet neighboring district athletics	District radios	Wayfinding & welcoming		Switch modernization	Expand wireless between buildings
Capacity needs at High		Equity for MS fields	Emergency preparation containers			Firewalls & Internet equipment modernization	Improve cellular reception
			Wayfinding & Signage				

When reporting out be prepared to explain what each choice means to your group.



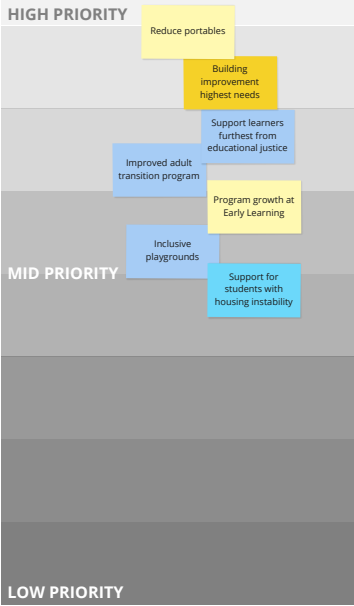
The following is a list of needs that have been identified in previous meetings. **Prioritize** them from highest to lowest by moving them to the right. **Rank** their sense of urgency high to low based on the GUIDING PRINCIPLES your team identified in the first breakout.



The following is a list of needs that have been identified in previous meetings. **Prioritize** them from highest to lowest by moving them to the right. **Rank** their sense of urgency high to low based on the GUIDING PRINCIPLES your team identified in the first breakout.

GROWTH	BUILDING IMPROVEMENT	OUTDOOR LEARNING	SAFETY & SECURITY	STUDENT SERVICES	INCLUSIVE LEARNING	TECHNOLOGY	
		Equity among play areas	Facility access control			Audio tech modernization	Phone system replacement
Capacity needs at Elementary	Building improvement poor condition	Field and court replacement needs	Alarm upgrades	Added mentor & counselling facilities	OT/PT, Sensory Services, Itinerant Programs	Wireless AP modernization	WAN Fiber pathways replacement
Capacity needs at Middle	Building improvement proactive	Raise standards to meet neighboring district athletics	District radios	Wayfinding & welcoming		Switch modernization	Expand wireless between buildings
Capacity needs at High		Equity for MS fields	Emergency preparation containers			Firewalls & Internet equipment modernization	Improve cellular reception
			Wayfinding & Signage				

When reporting out be prepared to explain what each choice means to your group.



The following is a list of needs that have been identified in previous meetings. **Prioritize** them from highest to lowest by moving them to the right. **Rank** their sense of urgency high to low based on the GUIDING PRINCIPLES your team identified in the first breakout.

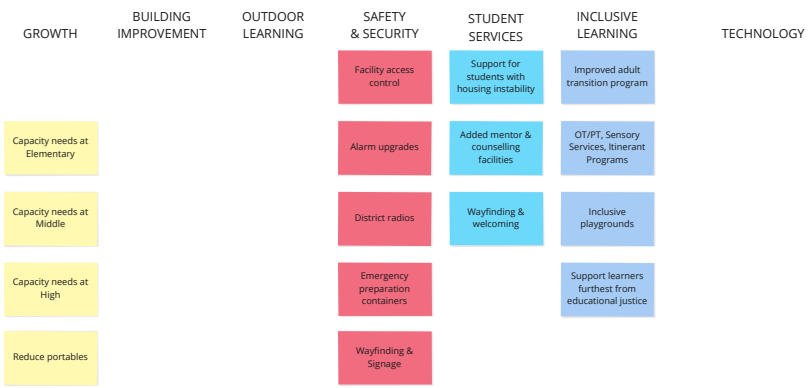
- GROWTH
- BUILDING IMPROVEMENT
- OUTDOOR LEARNING
- SAFETY & SECURITY
- STUDENT SERVICES
- INCLUSIVE LEARNING
- TECHNOLOGY



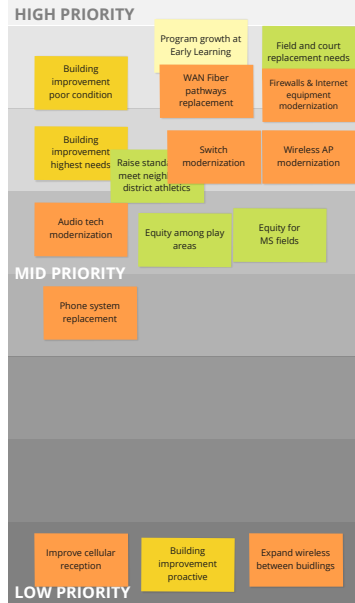
When reporting out be prepared to explain what each choice means to your group.



The following is a list of needs that have been identified in previous meetings. **Prioritize** them from highest to lowest by moving them to the right. **Rank** their sense of urgency high to low based on the GUIDING PRINCIPLES your team identified in the first breakout.



When reporting out be prepared to explain what each choice means to your group.



The following is a list of needs that have been identified in previous meetings. **Prioritize** them from highest to lowest by moving them to the right. **Rank** their sense of urgency high to low based on the GUIDING PRINCIPLES your team identified in the first breakout.

GROWTH	BUILDING IMPROVEMENT	OUTDOOR LEARNING	SAFETY & SECURITY	STUDENT SERVICES	INCLUSIVE LEARNING	TECHNOLOGY	
Program growth at Early Learning	Building improvement highest needs	Equity among play areas	Facility access control	Support for students with housing instability	Improved adult transition program	Audio tech modernization	Phone system replacement
Capacity needs at Elementary	Building improvement poor condition	Field and court replacement needs	Alarm upgrades	Added mentor & counselling facilities	OT/PT, Sensory Services, Itinerant Programs	Wireless AP modernization	WAN Fiber pathways replacement
Capacity needs at Middle	Building improvement proactive	Raise standards to meet neighboring district athletics	District radios	Wayfinding & welcoming	Inclusive playgrounds	Switch modernization	Expand wireless between buidlings
Capacity needs at High		Equity for MS fields	Emergency preparation containers		Support learners furthest from educational justice	Firewalls & Internet equipment modernization	Improve cellular reception
Reduce portables			Wayfinding & Signage				

When reporting out be prepared to explain what each choice means to your group.

HIGH PRIORITY

MID PRIORITY

LOW PRIORITY

A background image showing several smiling children of diverse backgrounds. In the foreground, a boy with glasses and a girl are visible, with other children behind them. The image is slightly faded to allow text to be read.

# Thank You!

The next meeting is:

**Monday, May 17, 5:30-7:30 p.m.**

Summaries of today's meeting will be sent to each of you and posted to the website one week from today.

Optional Office Hours:

**Wednesday, May 5, 2 - 3:00 p.m.**

For questions please contact:

Ashley McClaran [amccclaran@oacsvcs.com](mailto:amccclaran@oacsvcs.com)

Steve Murakami [smurakami@oacsvcs.com](mailto:smurakami@oacsvcs.com)