



Annual Report 2021
Presented May 15, 2021

Connecting Wellesley Women Since 1891

TABLE OF CONTENTS

Slate of Nominations.....	2
Meet the 2021-2022 Board.....	3
President’s Report.....	11
Treasurer’s Report.....	12
Communications Report.....	13
Admissions Report.....	14
Community Service Report.....	16
Membership Report.....	17
Programming Report.....	18
Affinity Groups Reports.....	21
Supper Club.....	22
40s and 50s Decade Group.....	23
Book Award Program.....	24
Chicago Wellesley Club Scholarship Fund Report.....	25
Secretary’s Report.....	26
Minutes of Chicago Wellesley Club Annual Meeting 2020.....	26

SLATE OF NOMINATIONS

Members of the Board of Directors are elected on alternating two-year terms. The following listing includes both the nominees for the 2021 – 2023 term and those who will complete an unexpired two-year term ending in 2022.

Slate for the Board of Directors of the Chicago Wellesley Club

<u>Position</u>	<u>Name and Year</u>	<u>Term Ends</u>
President	Hollee Mangrum-Willis '04	2022
Vice President	Pat Mell '75	2022
Treasurer	Arlevea Freeman '15	2023
Secretary	Felice Ojo '08	2023
Co-Chair of Programming	Cece Countryman '15	2023
Co-Chair of Programming	Lina George '99	2022
Co-Chair of Membership	Jill White-Cross '00	2023
Co-Chair of Membership	Deb Moldover '09	2022
Co-Chair of Admissions	Tamar Zmora '11	2023
Co-Chair of Admissions	Deana Haya '98	2022
Co-Chair of Communications	Amaya Arcelus '15	2023
Co-Chair of Communications	Alix Mikesell '88	2022
Co-Chair of Community Service	Maria Acosta '15	2023
Co-Chair of Community Service	Laurie Breitkopf '75	2022
Co-Chair of Liaison to Affinity Groups	Marian Chen '99	2023
Co-Chair of Liaison to Affinity Groups	Angela Barnes '91	2022

We are very grateful for the service of those Board members who will complete their terms with the board this year: Dianne Goren Radtke '75, Katherine Nunes '11, Heather Saylor '88, Yeena Yoon-Yoo '01, and Ellen Rheame '06. We also thank those Board members who are staying on with the board for a new term or new position: Hollee Mangrum-Willis '04, Arlevea Freeman '15, Lina George '99, Alix Mikesell '88, and Laurie Breitkopf '75.

Thank you to those who have volunteered this year. If you are interested in getting involved, please contact nominations@chicagowellesleyclub.org.

Respectfully submitted,
The Chicago Wellesley Club Board

MEET THE 2021-2022 BOARD



HOLLEE MANGRUM-WILLIS
President

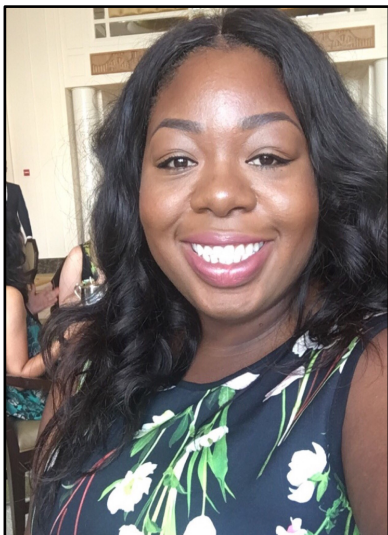
Hollie Mangrum-Willis '04 is Wellesley class of 2004 and majored in Psychology and Theatre Studies. She is a non-profit leader with over fifteen years of experience in program development, training, public speaking, and engagement strategies. Rooted in youth program management, arts, and entertainment, Hollie's non-linear path includes Youth Work Methods Trainer certification and a twenty-year career as a dance educator. As the new Deputy Director of One In Tech, an ISACA Foundation, she works to shift the culture of how we address and sustain diversity in the cybersecurity workforce and make the digital world more accessible to everyone. Hollie is married to wonderful husband and budding artist, Dorian Hampton, and bonus mother to a U.S. Army Soldier currently stationed in Kuwait. In her "spare time" she volunteers with WRJI and revels in being "Auntie Hollie" to three nieces and countless other children around the world.



PATRICIA MELL
Vice President

Patricia Mell '75 had a double major at Wellesley in French and Political Theory and returned home to Cleveland, Ohio for her law degree at Case Western Reserve University School of Law. She started practice as an Assistant Attorney General in the State of Ohio and then became Corporations Counsel for the Ohio Secretary of State. She left the practice for academia, eventually attaining the rank of Associate Dean for Academic Affairs at what is now Michigan State Law School. She came to Chicago in 2003 as the 11th Dean and first African American and female Dean of John Marshall Law School. She was the second African American woman in the United States to hold such a position. Currently, she is the President of P. Mell Advisors, a boutique insurance consulting firm assisting organizations and individuals in making strategic benefits decisions through planning and insurance products. As a

business consultant, legal and insurance practitioner, faculty member, academic dean, and CEO, she has over 30 years' experience. She has written several scholarly articles and made presentations in a number of national and international venues. Pat has been a director of Ethos, a Wellesley News Editor, a 1975 class officer, a Chicago Wellesley Club Programs VP and had the honor of being the first President of the Wellesley Alumnae of African Descent (WAAD, pronounced wade). Recently Pat was recognized by Marquis Who's Who in America 2017-2018 and received a Humanitarian Award from Marquis Who's Who 2017- 2018. In addition to serving the CWC, Pat serves on the boards of the Nathan Manilow Sculpture Park at Governors State University and the Legislative Committee of the Orland Park Chamber of Commerce. Pat is also president of the A.I.M. B.N.I. Chapter of Naperville-Plainfield. She gardens (weather permitting) and travels with her husband, Dr. Michael Ragland.



FELICE OJO
Secretary

Felice Ojo '08 is a native of Chicago. At Wellesley College, Felicia was a French Major and Economics Minor. She also danced with Yanvalou and was an active member of both Wellesley African Students Association (WASA) and Ethos. Since graduation Felicia has obtained an MBA in International Finance and a Masters in Accounting. Felicia has worked in the Real Estate Industry for the last twelve years and is an Accounting Manager at Brookfield Properties. Felicia previously served on the CWC Board as Communications Co-Chair from 2012-2014 and looks forward to re-joining the CWC board as Secretary.



ARLEVEA FREEMAN
Treasurer

Arlevea Freeman '15, also known as Leve, graduated from Wellesley in 2015 having studied Economics. She is originally from Chicago and moved to the Downtown area post-graduation. Arlevea is a Statistics Analyst at Federal Reserve Bank of Chicago working mainly with monetary policy related data. Besides her more quantitative career, she has been leading community engagement efforts at the bank for the women's network group. She also lends her vocal talents as a voiceover actor for the Federal Reserve System.



LINA GEORGE
Programming

Lina George '99 was an Economics Major at Wellesley and moved from NYC in the summer of 2017 to make downtown Chicago her home. At Wellesley, Lina served as First Year and Social Coordinator for WASAC, co-president of the Running Club and Advertising Editor for Wellesley's Yearbook '95-'96. Lina has worked in Higher Education both on the industry and the consulting side for the last 20+ years. Currently, Lina is a Senior Manager at Accenture serving clients in the Higher Education, Health and Public Sectors on their journey to the Cloud. Lina has completed two years as Programming Co-Chair of the CWC and will continue on for another term.



CECE COUNTRYMAN
Programming

Cece Countryman '15 was a Biology and French major at Wellesley. She was involved in different organizations at Wellesley, including having a Features column in the Wellesley News and serving as co-chair of the Relay For Life Planning Committee, on the CWS Service Council, and as Vice President and President of the Belly Dancing Society. After graduating, Cece spent a year in France teaching English, then returned to the Chicago area, where she is from. Cece currently works as a Research Technologist in a genomics lab at the University of Illinois at Chicago. She has greatly enjoyed helping with CWC programming committee this year and looks forward to joining the Board as Programming Co-Chair!



ALIX MIKESELL
Communications

Alix Mikesell '88 majored in studio art at Wellesley and received an MFA in Metalsmithing and Jewelry Design from Indiana University. Her early work in Judaica was exhibited nationally, published in *Metalsmith Magazine*, and two of her pieces became part of the permanent collection of the Jewish Museum of New York. She currently designs and makes jewelry focusing on the clever reuse of alternative materials such as laminate countertop, flooring, vintage buttons, pebbles and swizzle sticks. Alix has taught Metalsmithing and Jewelry Design at Indiana University, The School of the Art Institute of Chicago, Northeastern Illinois University; she now teaches part-time at College of DuPage. Alix lives in Oak Park with her husband and has two sons in college.



AMAYA ARCELUS
Communications

Amaya Arcelus '15 is a Boston native. While at Wellesley, a Psychology major, Amaya was part of the first-ever TEDxWellesley event. She also taught spin classes at the sports center. Since graduation, Amaya worked at Nielsen in a variety of roles in the CPG industry, ranging from retailer pricing strategy to marketing analytics. During her free time, Amaya loves to explore the incredible Chicago food and coffee scene. She looks forward to being a part of the Board as Communication Co-Chair and getting to know other CWC members!



JILL WHITE-CROSS
MEMBERSHIP

Jill White-Cross '00 is part of the Red Class of 2000. After graduation, Jill completed a Masters of Science in Neurobiology at Northwestern University. She met and married a Houstonian, Chadrick Cross. Jill and her husband moved to Houston, TX where Jill joined the Wellesley Club of Houston and served as the young alumni representative. Jill coordinated monthly young alumni Ivy Plus happy hours with MIT, Harvard, Northwestern, U Michigan, Dartmouth, Cornell, and other alumni. She had the pleasure to represent the Wellesley Club of Houston at ALC (now called BLUEprint). Professionally, Jill worked at MD Anderson Cancer Center as a senior research assistant in a gastrointestinal pathology lab. Jill and her family returned to Chicago in 2008 for her husband's cardiothoracic surgery fellowship. She is currently a stay-at-home mom to three boys aged, 10, 8, and 2. Jill is an avid volunteer at her children's school and holds leadership positions in various parenting groups.



DEB MOLDOVER
Membership

Deb Moldover '09 is originally from outside D.C. but has made her home in Chicago for almost the last 10(!) years. At Wellesley she double majored in Music (vocal performance) and History, and ended her tenure as Co-President of the College Democrats. Now a practicing defense attorney, Deb typically represents manufacturers of industrial products and thanks her time at Wellesley for those still far too frequent times when she is one of a handful of women in the room. When not pouring over case law, Deb sings with the Chicago Bar Association Chorus, delights in the antics of her feline overlord and companion Yoisher, and spends her time getting to know a city she thinks of as a place she accidentally moved to and now cannot imagine leaving. She looks forward to her time on the Board as Membership Co-Chair and serving the CWC community.



DEANA HAYA
Admissions

Deana Haya '98 was a Biochemistry and Art History major at Wellesley. Deana has worked in technology for almost two decades and is currently an HR Technology Consultant at Accenture. Deana has been involved in women's education initiatives in Afghanistan for 20 years and works with several non-profits to promote educational and vocational opportunities in the Bamiyan and Kabul provinces. In her free time, Deana enjoys camping, hiking and art museums.



TAMAR ZMORA
Admissions

Tamar Zmora '11 was a Studio Art and English Major at Wellesley. In 2018, she moved to Chicago after studying animation in San Francisco. She works as a freelance Illustrator and writer at a start-up technology company. Tamar enjoys volunteering and currently mentors with Chicago Scholars. She also loves reading, drawing, and listening to true crime podcasts.



LAURIE BREITKOPF
Community Service

Laurie Breitkopf '75 created an Independent Major (at that time) in Environmental Studies. She returned to her native Chicago to obtain a law degree at DePaul University College of Law, with the intention of focusing on environmental law. Laurie specialized in environmental law for fifteen years of her thirty-year legal career, later adding practice in international law, real estate, occupational health and safety, corporate law, and mergers and acquisitions until her retirement in 2009. Laurie currently is involved in environmental protection activities, including environmental equity and anti-racism projects in Lake County, as well as volunteering in local government as the Chair of the Riverwoods Plan Commission. She also delights in growing vegetables in the community garden and rejoices in the arrival of spring (especially this year!). Laurie has served the Chicago Wellesley Club in the past as Co-Chair of the Admissions Committee and Co-Chair of the 70s Decade Group.



MARIA ACOSTA
Community Service

Maria A. Acosta '15 is the incoming Community Service Co-Chair and has previously served as Membership Co-Chair. She majored in Biological Sciences and minored in Psychology and is currently completing her masters degree at Michigan State University. During her time at Wellesley, she was an active member of Mezcla and Wellesley Wushu. Maria has experience working in public health, the government sector, and technology field. She is currently a change management consultant for a fortune 500 company. In her spare time, she enjoys running, spending time with friends, and catching up on her long list of shows and books.



ANGELA BARNES
Liaison to the Affinity Groups

Angela Barnes '91 was a Political Science and Philosophy major at Wellesley and received her Juris Doctor from Columbia University School of Law. She is a corporate lawyer, a risk management and compliance professional, and a life-long southside Chicagoan. Angela currently serves as the General Counsel and Director of Legal Affairs & Growth Initiatives for City Tech Collaborative. She is a Certified Compliance and Ethics Professional (CCEP) and a member of the Society of Corporate Compliance and Ethics (SCCE). Angela is a passionate advocate for providing services and resources to underserved geographic and demographic communities. She stands at the intersection of race, gender, and sexual orientation to help guide the strategic thinking and direction for organizations where she has proudly served as a member of the board of directors. Angela's board service includes being the current Board Chair for the Center on Halsted and the immediate past Board Chair for Chicago Coalition for the Homeless. Angela is also a member of the Racial Justice Diversity Committee for the Northern District of Illinois. Serving as the Affinity Co-Chair will mark her third tour of duty with the Chicago Wellesley Club Board.



MARIAN CHEN
Liaison to the Affinity Groups

Marian Chen '99 double majored in Cognitive Science and Language Studies while at Wellesley and went on to obtain a PhD in Psychology at Rutgers University-New Brunswick, focusing on Cognitive Development. She currently works as an institutional research analyst at Loyola University, where she is completing a master's degree in Information Systems and Analysis. She and her Shiba Inu Chie are proud residents of Uptown.

PRESIDENT'S REPORT

Dear Chicago Wellesley Club Members,

Thank you for joining our Board and volunteers in connecting Chicago alums with one another and the College again this year, as we have since 1891. While the past year has brought more “unprecedented” situations in our lives, in our Club, and across the globe than we might ever have imagined, we are heartened to be able to support and be supported by our fellow Wellesley alums in our journeys.

The Club moved into the virtual arena seamlessly, bringing enjoyable and fascinating programs to our members and alums across the country. Our affinity groups have continued to meet virtually – especially for book discussions!

Though our dues paid memberships have decreased this year, the Club continues to support its activities and was still able to provide donations to both the CWC Scholarship Fund and Wellesley Student Aid Society this year. Members were also generous with their donations to the musical instrument drive and their time to *Get Out the Vote* last fall. The Board shared invitations to participate in these activities through our many media platforms.

This year, the Chicago Wellesley Club Board began the work of increasing racial awareness and justice, undertaking training and considering how we can improve the processes and programming of the CWC. Although we are only at the beginning of what will be ongoing work, these efforts are a chance to develop a more inclusive environment for all members of our Club.

None of this would be possible without the many volunteers supporting this Club and you – the members we serve. As you read the committee reports that follow, I hope you enjoy taking a look back at all we did together in 2020-2021 and are inspired to participate again – or participate anew – next year.

It has been my privilege to serve as your club president and I look forward to seeing you virtually or in person at a CWC event soon!

Respectfully submitted,
Dianne Goren Radtke '75
President, Chicago Wellesley Club
president@chicagowellesleyclub.org

TREASURER'S REPORT

As of May 2, 2021, the Chicago Wellesley Club ("CWC") had the following balances:

Checking Account	\$ 16,503.06
BlueSnap Account	\$ 86.02
<u>High Yield Savings Account</u>	<u>\$ 6,644.30</u>
Total Assets	\$ 23,233.38

The accounts are with Chase Bank, our long-time bank, and we pay no fees.

CWC's budgeted expenses for this fiscal year ending 6/30/21 are \$13,140, or roughly \$2,198 less than last year's budget and \$2,673 (21%) higher than last year's actual expenses. Our balance sheet and YTD financials were very sound throughout 2020 going into 2021. Due to the COVID-19 pandemic, all previously in-person events were held online at little or no expense.

As of this writing, virtually all expenses for the Club are known through the rest of the fiscal year. Therefore, the Club's total asset-to-annual budget ratio (\$23,233: \$13,140) is currently 177%; the historical target is 100%, compared to over 200% last year (FY20), 198% (FY19), 111% in FY 2018, and 125% in FY 2017. We have traditionally followed a financial philosophy that event revenue should generally cover the "variable" expenses for an event, excluding "fixed" costs such as invitations. Dues receipts are expected to cover the printing and mailing of major event invitations and general expenses of running the Club, such as web hosting and technology fees. Over the last two years, your CWC Board made some significant decisions which have cut down on general club expenses based on the results of club surveys, technology, the "greening" of America, and available volunteer support.

There were two new cost expenditures for this year compared to last year. The first was the revitalization of the Book Award program, which resulted in roughly \$200 spent on book purchases and book distribution. The second was a \$3,000 donation for the CWC Board participation in a 5 session racial justice training led by the Wellesley Racial Justice Initiative (WRJI); for this expenditure CWC Board members donated \$1,300 of their own funds and the CWC funds covered the remaining \$1,700.

Though our balance sheet is strong, given these new expenditures for the year coupled with a decrease in membership dues paid, the Board decided to continue our allegiance to *Sed Ministrare*, support the College campus and students during by making gifts totaling \$2,200 to the CWC Scholarship Fund and \$300 to the Wellesley Students Aid Society on an unrestricted basis.

The aforementioned CWC Scholarship Fund, which is administered by the College, had a market value of \$353,854 as of 06/30/2020. The estimated fiscal year 2021 available distribution is \$13,178, down 6.8% over last year. Gifts over the four previous years ranged from \$1,000 to \$3,500 (when President Johnson visited). Our Scholarship Fund

recipient this year is Genevieve Fisher, Class of 2021, Anthropology Major, from Chicago, IL.

We have a second fund with the College, which is the Chicago Wellesley Club Faculty Salary Advancement Fund. The market value of this fund was \$218,023 as of 06/30/2020 and the estimated FY 2021 available distribution is \$8,119, down 7.6% over last year. Our most recent gift to this fund was \$10,000 in 1990; since then, we have mainly supported the Scholarship Fund.

Respectfully submitted,
Arlevea Freeman '15, Treasurer
treasurer@chicagowellesleyclub.org

COMMUNICATIONS REPORT

MISSION: The timely, effective dissemination of information about the activities and programs of the Chicago Wellesley Club to the Chicago Wellesley community through various media including the CWC official website, monthly and mid-month e-blasts, Facebook, as well as the facilitation of communication between the CWC Board and Wellesley College.

Committee Members: Yeena Yoon-Yoo '01, Alix Mikesell '88, and Helen Marshall '77.

Responsibilities:

1. Monthly e-newsletter

Produce monthly e-newsletter. Newsletter is compiled from news and events submitted by board members and affinity group leaders. It is sent out by the 1st of each month to all CWC members who have opted in to receiving club emails.

2. Mid-month e-blast

Send out an email mid-month that promotes events requiring an extra push for attendance / participation or have a change in plans.

3. Announcements

Email occasional reminders or important announcements to decade groups and to club membership.

4. Website

Ensure all content is current and appropriate, updating once or twice a month with new events and photos. Communications committee also maintains the website domain name.

5. Email forwarding

Assign and keep up to date all Chicago Wellesley Club email addresses (for board members and affinity group leaders, etc.) and make sure addresses forward to people's personal emails.

6. Social media (primarily Facebook and Instagram)

Maintain the official CWC Facebook page, posting CWC sponsored events and photos. Moderate CWC Community Group page. Confirm requests to join either page. Answer Facebook queries about CWC. Post event information and event photos on Instagram.

7. Printed flyer (to accompany Membership Committee's dues appeal)

Assemble content and design layout for flyer that highlights what CWC has done during the last year.

8. Photos

Collect and store event photos on Google Drive and on our website platform.

9. Committee reports

Provide monthly reports to the Board that are incorporated into the Board's monthly meeting minutes. Provide yearly report to the Board for Annual Report.

Respectfully Submitted,

Alix Mikesell '88 and Yeena Yoon-Yoo '01

Co-Chairs of Communications

communications@chicagowellesleyclub.org

ADMISSIONS REPORT

The Chicago Wellesley Club has continued to help the College select and recruit future Wellesley students, help that proved to be more critical in the face of the pandemic. Typical recruiting methods such as college fairs, discussion panels, and other in-person events were no longer available. The vast majority of interactions with the incoming class of 2025 occurred through the interviewing process, which we were able to conduct via phone or virtual platforms. Despite the reduction in recruitment activity, we saw an approximate 40% increase in interview requests in comparison to the 2020 cycle. We were fortunate for local alum engagement in modified admissions programming that maintained our connection to the talented prospective and admitted students and their families. Welcome Wellesley Class of 2025!

The Class of 2025

The Chicago Wellesley Club played a significant role in interviewing applicants who requested off-campus interviews. Local alums conducted eighty-six (86) virtual interviews for first-year applicants. This report went to print before the numbers for the

Class of 2025 were finalized, but as of this date: twenty-one (21) students from the Chicago area were admitted. Of these, five (5) were admitted Early Decision I.

The following information was available for thirteen (13) of twenty-one (21) admitted students.

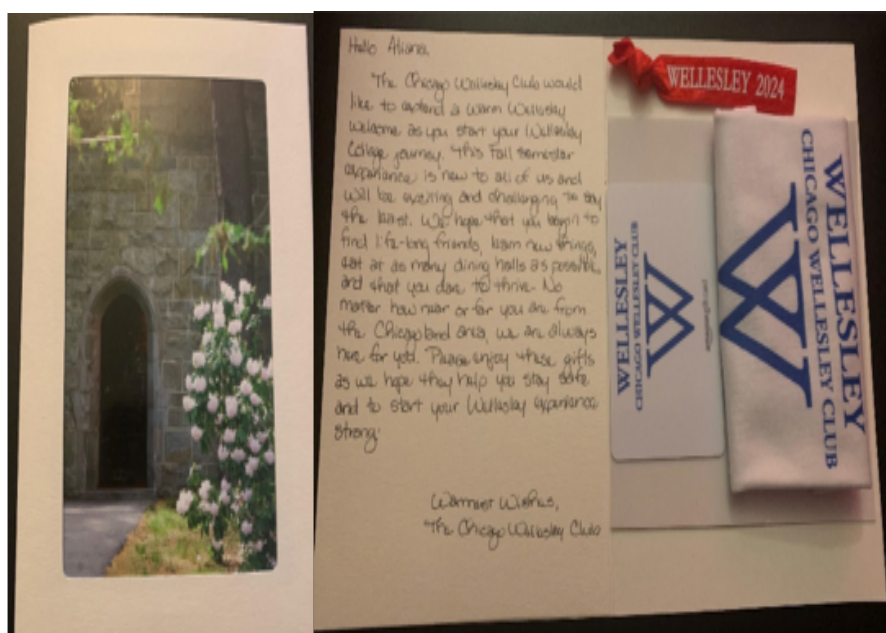
- Accepted students represent eleven (11) different high schools: seven (7) from high schools in Chicago; four (4) from suburban high schools; and one (1) from a boarding school.
- Three (3) of the admitted students attend private schools and ten (10) attend public high schools, of which five (5) attend public selective enrollment/magnet schools.

College Fairs

No college fairs were attended this admissions cycle due to the pandemic. The Chair of Admissions did participate in one virtual panel event for women's colleges hosted by The Nova Network and Regina Dominican College Prep High School on March 29, 2021.

Sending off the Class of 2024

Due to COVID-19 we were unable to host our annual first year send-off. However, we were able to welcome the incoming first-years and expose them to the Chicago Wellesley Club in a unique way. All 15 rising first-years received the following: a CWC face mask, a \$20 personalized Amazon Gift Card, and a card that contained photos of Wellesley made by a current Wellesley student. In addition, Wellesley's Office of Parent and Family Programs sent red hair ties and Wellesley car decals to be included in the cards as an added surprise.



Spring Admitted Student Event

We invited admitted students to our April Sibling Circle event honoring International Black Women's History Month. The two-hour virtual event featured preparation of refreshing soda and lemonade beverages, collard greens and cornbread cooking demonstrations, and headwrap tutorials. Admitted students also were able to hear fun stories from alums about their time at Wellesley and have questions answered. One

student who attended joined us from her boarding school and announced mid-event that her roommate had just committed to the college.

Thank you!

All of the admissions programming and outreach is made possible by the wonderful Chicago-area alums who volunteer their time and energy to recruit and connect with the next generation of Wellesley students. We could not do it without you and we are grateful for your support.

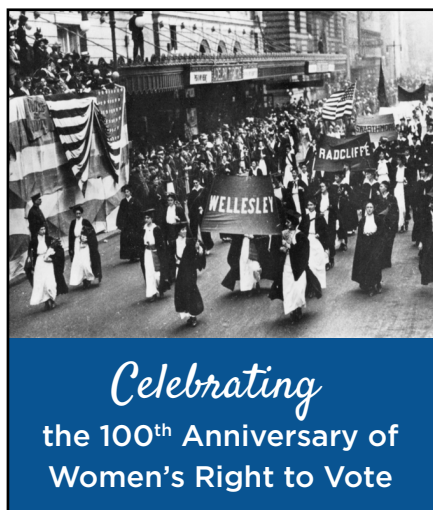
Respectfully submitted,
Hollie Mangrum-Willis '04
Chair of Admissions
admissions@chicagowellesleyclub.org

COMMUNITY SERVICE REPORT

The goal of the Community Service Committee in 2020-2021 was to provide meaningful service opportunities for Wellesley alums in the Chicago area to uphold the College's motto of service to others, while observing social distancing and health requirements during the pandemic. As with all activities during the pandemic, these requirements presented a challenge to planning community service projects.

Fall 2020 Project

In Fall 2020, the Chicago Wellesley Club partnered with the League of Women Voters of Illinois to conduct a nonpartisan *Get Out The Vote* project for the November 3, 2020 general election. 2020 was the 100th anniversary of women's right to vote, so this was a particularly relevant and timely project. At least 15 people undertook the project.



The goal of the *Get Out The Vote* project was for volunteers to:

1. Prepare themselves to vote,
2. Vote safely, and
3. Contact at least 10 people in their networks to inform them about registering to vote, educating themselves in preparation for their votes, and voting safely. CWC volunteers were to ask their 10 contacts to contact 10 additional people.

In addition to our volunteers, the Committee gives many thanks to Allyson Haut '80, President of the League of Women Voters of Illinois, for her support and that of her extremely capable staff.

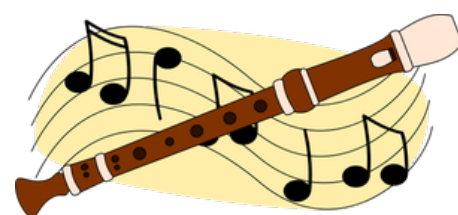
Spring 2021 Project

In Spring 2021, the CWC partnered with Bravo Waukegan, a nonprofit organization that brings music programs to the Waukegan public schools, to conduct a socially-distanced instrument collection drive from April 8 through April 11.

CWC offered four drop off locations/opportunities: April 10th in Wilmette (Laura Nieder '01), April 11th in Oak Park (Alix Mikesell '88), April 8-11th by appointment on the south side of Chicago (Hollie Mangrum-Willis '04), and April 8-11th by appointment in Wilmette (Helen Marshall '77). Donations also were received in Hyde Park, Mundelein and Barrington Hills. Bravo Waukegan arranged to pick up the instruments and accessories from all collection sites except Mundelein. Pam Ohman '80 delivered the items she collected from Mundelein neighbors to Bravo Waukegan's founder Pat Sikorovsky '52 in Lake Forest.

The following items have been collected to date:

Three violins, two electric keyboards, two guitars, ten music stands, three violin cases, one sousaphone chair, flute, violin bow, viola and case, oboe, and two music notebooks.



Bravo Waukegan welcomes any additional donations of musical instruments and music accessories. Please contact Pat Sikorovsky at patsikorovsky@yahoo.com.

Thank you to everyone who helps the Chicago Wellesley Club embody the spirit of "Non Ministrari sed Ministrare". We are grateful for your generosity and your service.

Respectfully submitted,
Laurie Breitkopf '75
Chair, Community Service Committee
communityservice@chicagowellesleyclub.org

MEMBERSHIP REPORT

The Chicago Wellesley Club has continuously been a nationwide leader with one of the highest dues-paid membership rates for alums. Unfortunately, dues-paid membership for the Club declined significantly in FY 2021. Based on the online directory of 854 alums in the Chicagoland area, our dues-paid membership figure translates to a 5.8% paid membership rate down from 18.5% from the previous year. Within that, we have 27 regular dues-paid members (down from 98), 19 patron members (down from 55), 0 young alum members (down from 4) (those who graduated in the last five years), and 0 recent graduates (class of 2020). We did have 4 members opt for the special dues category we added for members who might be experiencing hardship due to this past

year's events. Multiple opportunities are offered for Wellesley alums to become dues-paid members or participate in the Chicago Wellesley Club throughout the year, including in person events and online activities.

There are several contributing factors to the decline in membership including the migration by the college to a new website management system that made paying for dues online inaccessible for the better part of 3 months in FY2021. The new website management system also removed automatic reminders of expiring membership dues to members; in light of this change, the CWC has returned to a fiscal year membership period. We will now have all dues paying memberships to run from July 1 - June 30. And finally, in an effort to be sensitive to the various needs of members during this challenging time, we opted to forgo our annual membership campaign drive. It is the recommendation of this committee to reinstate the annual membership drive and to work more closely with various members of the board to encourage dues paying membership in the coming year.

All of our wonderful programs are made possible by the generous support of our dues-paid members. We would like to extend a special thank you to our Patron members:

Prudence Beidler '67	Dianne Goren Radtke '75	Hollie Mangrum-Willis '04
Linda Bowsher '70	Sandra Polk Guthman '65	Ann Nunez '72
Laurel Bretkopf '75	Martha Hinchman '73	Marian Percy '56
Ann Burnstine '53	Judy Keller '61	Pier Rogers '75
Ann Cole '59	Brigid Kennedy '86	Katherine Stelletello '60
Sylvia Decker '60	Ann Kuppe '79	<i>Patron Dues-paid Member List</i>
Arlevea Freeman '15	Helen Marshall '77	<i>as of May 1, 2021.</i>

Respectfully,
Heather Wahl Saylor '88
Chair of Membership
membership@chicagowellesleyclub.org

PROGRAMMING REPORT

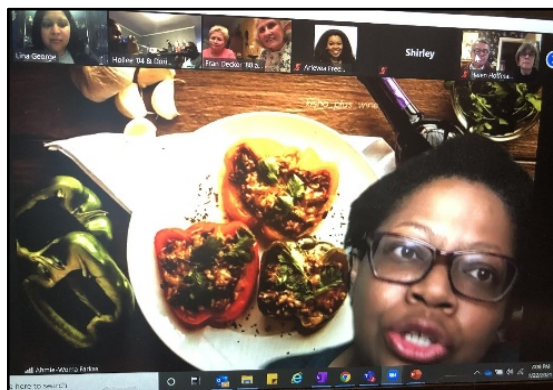
Programming this past year was 100% Virtual and featured the interests and diverse talents of Chicago Wellesley Club members as we came together to share cultural and educational experiences, and delight in one another's company.

CWC Celebrates! and Annual Meeting featuring Professor Jennifer Chudy

CWC alums and guests came together virtually on May 2, 2020 to recap the year and hear Professor Chudy speak on the topic of "Race in Politics." Attendees were able to partake in virtual breakout rooms to hold small group discussions and networking after the keynote portion of the event. During the recap of the year, Chicago Wellesley Club President and Committee Chairs highlighted the Club's activities and contributions of the prior year and announced results of the virtual election of board members to serve during the 2020-2021 year.



2020 Summer Spotlight on Ahmie-Woma Farkas '00 and Virtual Wine Tasting Event



Wellesley alums across the country came together virtually on July 24, 2020 while Ahmie-Woma Farkas '00 took us through her journey as a wine guide and sommelier. The participants enjoyed a virtual wine tasting and food pairing. Due to the success of this event, Ahmie-Woma Farkas '00 led the CWC in an encore Virtual Wine Tasting event on January 22, 2021.

CWC Sibling Circle Virtual Series

Wellesley alums across the country came together virtually for 10 different happy hour events throughout the past year that featured alums showcasing their knowledge of cocktails and food pairings which included the themes of spirits, holidays, and cultural celebrations.



CWC Virtual Trivia Night

Wellesley alums across the country came together virtually and recreated Pub Night Trivia virtually at home in two different events on October 25, 2020 and February 7, 2021. Prizes were given to first and second place winners for each event. Due to the success of these events, the CWC will be hosting games nights quarterly moving forward.

2020 Virtual Holiday Tea

CWC alums met virtually for the 2020 Holiday Tea. It was a fun and festive event that featured traditions such as step singing and a recipe exchange. We introduced a fun ice breaker; tea preparation demos from China, India & Africa; holiday themed virtual games; and had a breakout room activity for alums to mingle.



CWC Virtual Movie Discussions

Wellesley alums across the country came together virtually and were led in exciting movie critiques of “Mona Lisa Smiles,” on September 27, 2020 and “Hidden Figures” on January 10, 2021 by Paul Hurder, Northwestern OLLI movie discussion leader.

2021 Winter Spotlight on Alix Mikesell '88

Wellesley alums from across the country gathered virtually to hear Alix Mikesell '88 guide us through her artistic journey and the distinctions between conventional jewelry, contemporary jewelry and wearable art. She currently designs and makes jewelry focusing on the clever reuse of alternative materials such as laminate countertop, flooring, vintage buttons, pebbles, and swizzle sticks. Aix has taught Metalsmithing and Jewelry Design at Indiana University, The School of the Art Institute of Chicago, Northeastern Illinois University; she now teaches part-time at College of DuPage.



Wellesley Alum Virtual Speed Networking Event

Wellesley alums from across the globe were able to network in this CWC sponsored virtual networking event. Alums worked on developing their personal brand and took part in an activity to hone their elevator pitch. Due to the success of this event, the CWC will be hosting similar events quarterly going forward.

“Wellesleyscapes” Virtual Paint Party

The CWC and the WCAA collaborated to host a paid Virtual Paint Party event on April 18, 2021 where alums from across the country were led by a third-party vendor in painting four Wellesley scenes:

- Galen Stone Tower
- Lake Waban
- Iconic Wellesley Lamp post
- Graduate Hoop rolling



The Programming Committee and Board of Directors gratefully acknowledge the many CWC members who helped make each program a success by volunteering to showcase their talents, speak, or contribute in many other ways behind the scenes. We thank those who shared in the camaraderie of CWC by attending events this year and welcome your suggestions for future programming.

Respectfully submitted,
Lina George '99, Chair of Programming
programs@chicagowellesleyclub.org

AFFINITY GROUPS

The Chicago Wellesley Club currently has the following local Affinity Groups and group leaders:

- 40s & 50s book group: Martha Cray '58 and Nancy Phair '55
- 70s decade group: Susan Morrison '76
- Book Club: Pat Anderson '79
- Supper Club: Cece Countryman '15
- MBA/Women in Business Group: Sally Augustin '81
- MIT / Wellesley young alumni co-sponsored events coordinators: Gabriela Salcedo '15 (W) / Steven Carreno (MIT)
- Scholarship Fund Manager: Helen K. Marshall '77
- Around Town is on hiatus this year due to the pandemic.

The Chicago Wellesley Club also has liaisons with shared identity and interest groups and run through the college, including:

- WAAD (Wellesley Alums of African Descent)
- WLAN (Wellesley Latina Alumnae Network)
- W3A (Wellesley Asian Alumnae Association)
- WAPA (Wellesley Alum Pride Alliance)
- Wellesley Jewish Alumnae (WJA)
- Friends of Art

CWC is also happy to welcome to this list the Wellesley Muslim Alums (WMA) shared identity group, which has been newly established in 2020-2021.

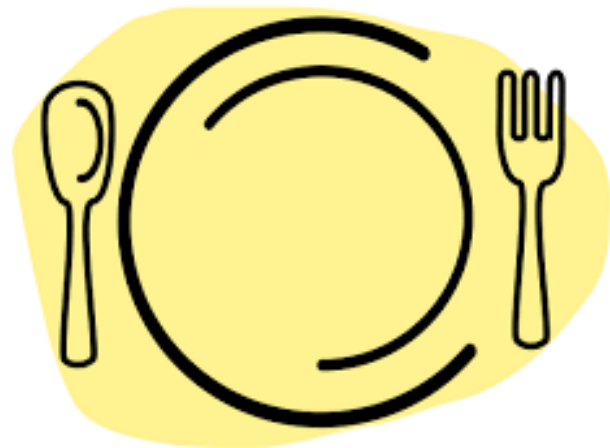
Great thanks to Toni Harkness '57 and Anne Martin '58 who have recently stepped down from their role as the '40s and '50s decade co-chairs after more than sixteen years of service to the club.

If you have a question about a particular group or are interested in organizing an affinity group, please contact affinitygroups@chicagowellesleyclub.org.

Respectfully submitted,
 Ellen Rheaume '06
 Liaison to the Affinity Groups
affinitygroups@chicagowellesleyclub.org

SUPPER CLUB REPORT

After five years of making our way around Chicago trying fun/delicious/inexpensive restaurants, the Chicago Wellesley Club Supper Club moved virtual this year. We continued to meet monthly, focusing on themed evenings, including *Food During Travel*, *Apples, apples everywhere*, *Pajama Party*, and *New Year, New Food*. Looking towards 2021-2022, we are excited to check out new restaurants, visit old favorites, and continue on our path of culinary adventures and good times!



To get involved, contact supperclub@chicagowellesleyclub.org.

40s AND 50s DECADE GROUP REPORT

The year of the pandemic brought our decade group many new challenges, among them having to sacrifice our in-person gatherings at Vi in the Glen. The good news is that all of us turned to Zoom! We not only found this concept enjoyable, but also realized that some of our decade members could more easily join in on the book discussions, especially if they lived outside the Chicago area. Maya Percy '56 generously stepped up to be our "Zoom host."



We launched our first meeting on October 27, and Nancy Phair '55 led nine of us in discussing *The Plague* by Albert Camus. The book was published in 1948, and awarded the Nobel Prize for Literature in 1957, so some of us had read it during our college years. We felt we all understood the "parable" better now, and were aware of how Camus made the pain of loneliness so vivid and heartfelt.

Our second Zoom gathering was on February 16, led by Martha Cray '58. Twelve of us signed up to read and discuss Isabel Wilkerson's *Caste: The Origins of our Discontent*, and could agree with the critics who commended her impressive research, combined with incredible story-telling about real people.

We'll be zooming on May 12 to discuss our third book this year, *The Other Americans* by Laila Lalami. Helene Rosenberg '57 will lead our discussion. This book was required reading for incoming Wellesley freshmen last fall and was the first selection for the newly initiated national Wellesley Book Club. As always, we're looking forward to reading together, seeing one another, and sharing a meaningful discussion.

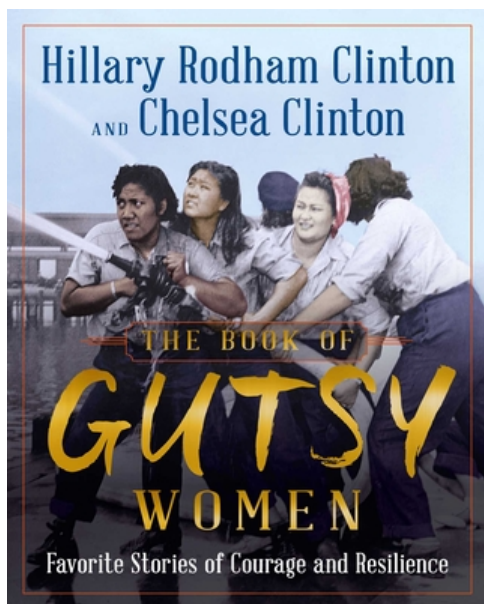
Respectfully Submitted,

Martha Cray '58, Nancy Phair '55, Anne Martin '58, and Toni Harkness '57
Chairs and Organizers, 40s and 50s Decade Group

BOOK AWARD PROGRAM REPORT

The Book Award Program, which operates under the auspices of the Wellesley College Alumnae Association, honors young women in their junior year of high school. Recipients are selected by their schools; recognized for their achievements and contributions in their communities. The Award program gives students, families, high school faculty and staff the opportunity to become better acquainted with Wellesley.

After suspending the Book Award program for the 2019-2020 school year, we were able to reinstate the program and form a relationship with Chicago Public Schools for the 2020-2021 school year. We were also able to engage a south-suburban high school and reconnect with a previously engaged school. Six (6) students will receive *The Book of Gutsy Women: Favorite Stories of Courage and Resilience* by Hillary Rodham Clinton '69 and Chelsea Clinton, which contains portraits of groundbreaking women throughout history and embodies the spirit of Wellesley's mission: to educate women who will make a difference in the world.



This year's recipients attend the following schools:

- Benito Juarez Community High School
- Thomas Kelly College Preparatory
- Whitney Young Magnet High School (2 students)
- Lincoln Way East
- New Trier High School

We hope to expand our Chicago Public Schools relationship, re-engage other previously involved suburban high schools, and engage more south suburban high schools in the next school year. Thank you for your donations!

Respectfully Submitted,
Book Award Program Volunteers
bookaward@chicagowellesleyclub.org

CHICAGO WELLESLEY CLUB SCHOLARSHIP FUND

Make your tax-deductible donation now.

www.chicagowellesleyclub.org - choose "Support Our Club"

The Chicago Wellesley Club congratulates Genevieve Fisher '21 of Chicago, the 2020-2021 recipient of a grant from the Club's Scholarship Fund. Genevieve is a major in Anthropology.



Genevieve Fisher (Facebook)

Thank you! I've been so grateful for all of the assistance from the Chicago Wellesley Club chapter. – Genevieve Fisher

The Chicago Wellesley Club Scholarship Fund is supported by donations from alums, who contributed \$2,195 in FY21 (as of 4/1/21.) Donations are forwarded to the College to be added to the principal of the fund, and to be invested.

The Chicago Wellesley Club Scholarship Fund was established in 1939. The beneficiary of income from the fund is a Chicago-area student chosen by Wellesley College Student Financial Services, based on need. The Club also has a Faculty Salary

Advancement Fund that supports faculty salaries.

The financial status reported by Wellesley College Office of Development as of June 30, 2020 (most recent figures available):

Chicago Wellesley Club Scholarship Fund

Market Value: \$353,854.38

Estimated FY21 Income Distribution: \$13,178.14

Chicago Wellesley Club Faculty Salary Advancement Fund

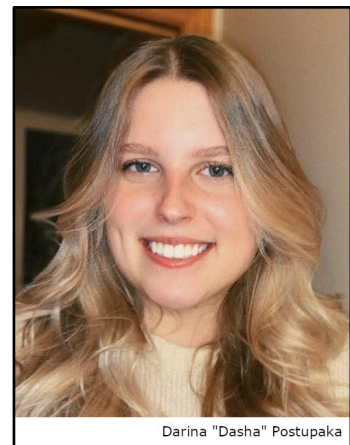
Market Value: \$218,023.20

Estimated FY21 Income Distribution: \$8,119.56

We also have an update from Darina "Dasha" Postupaka '21 of Tinley Park, our scholarship recipient for 2019-2020.

I am a senior looking forward to in-person graduation in June. I'm majoring in Biology on the pre-med track, and currently working toward publishing my research on Bluegill Sunfish from our very own Lake Waban. Upon graduation, I hope to secure a research assistant position before continuing to medical school. I am very grateful to the Chicago Wellesley Club for supporting me over the years, and excited to return to Chicago and join all of you as an alumna soon!

– Dasha Postupaka



Darina "Dasha" Postupaka

Respectfully submitted,

Helen Kriz Marshall '77

Development Volunteer - Chicago Wellesley Club Scholarship Fund

scholarshipfund@chicagowellesleyclub.org

SECRETARY'S REPORT

The Chicago Wellesley Club Board of Directors held nine Board meetings during the 2020-2021 year, including the Annual Meeting. Except that Alix Mikesell '88 resigned as the Vice President to fill the vacant position for Communications, the directors approved at the 2020 Annual Meeting of the Chicago Wellesley Club represented the interests of Club members during this year. Meeting minutes are below.

Chicago Wellesley Club Annual Meeting Minutes

Via Videoconference on May 2, 2020

Charlotte Christian, President, called the meeting to order at 11:15 AM.

President Christian welcomed all attendees. She provided a short year-in-review for club activities. President Christian then reported the results of the vote of members of the Chicago Wellesley Club on questions posed to the members on April 19, 2020 that remained open for voting until April 29, 2020.

She reported that the members of the Chicago Wellesley Club:

- approved the minutes of the last meeting of members of the Chicago Wellesley Club which was held on May 11, 2019;
- approved the adoption of the amendments to the Chicago Wellesley Club Articles of Incorporation as recommended by the board of directors (on April 4, 2020);
- approved the proposed slate of nominees to the board of directors for the 2020-2021 year, as follows:
 - Dianne Goren Radtke, President
 - Alix Mikesell, Vice President
 - Arlevea Freeman, Treasurer
 - Hollee Mangrum-Willis, Admissions

President Christian asked that members consider volunteering for the board of directors as some positions remain vacant. President Christian thanked members for their volunteerism in many roles. She also reported to the members on the decision of the board of directors to increase the amount of annual giving on behalf of the Club.

Directors reported on dues-paid membership, programming and activities of members during the past year and results of the survey of members.

After a short introduction, Professor Jennifer Chudy presented on Race in Politics. Members participated in question and answer with Professor Chudy, then participated in breakout discussion groups.

President Christian adjourned the meeting at 12:40 PM.

Respectfully submitted,
Katherine Nunes '11, Secretary
secretary@chicagowellesleyclub.org

WELLESLEY
CHICAGO WELLESLEY CLUB



Connecting Wellesley Women Since 1891