

LEA Name : Unionville-Chadds Ford SD
Address : 740 Unionville Road
Kennett Square , PA 19348

County : Chester
AUN Number : 124158503
LEA Type : SD

Annual Financial Report
Accuracy Certification Statement

For Fiscal Year Ending
6/30/2020

Pennsylvania Department of Education
&
Office of Comptroller Operations

PDE-2056: Intermediate Unit
PDE-2057: School District, AVTS/CTC, Charter School,
and Special Program Jointure

CERTIFICATION: By signing this page I agree that the electronic data submitted is a complete and accurate statement of the financial operations and status of the local education agency for the fiscal year. It has been prepared in accordance with generally accepted accounting principles and established Commonwealth of PA reporting guidelines.



Chief School Administrator Signature

11.20.20

Date



Board Secretary Signature

11.20.2020

Date

Joseph Deady

Contact Person

(610)347-0970 Ext :3320

Contact Person Telephone Number

jdeady@ucfsd.net

Contact Person E-mail Address

Contact Person Fax Number

Audit Certification
Annual Financial Report:
For Fiscal Year Ending **6/30/2020**
(Pursuant to PA School Code Section 218(b))

LEA Name : Unionville-Chadds Ford SD
AUN Number : 124158503
County : Chester

Audit Certification Due: 12/31/2020

This certification is applicable to the Annual Financial Report data submitted through the Consolidated Financial Reporting System (CFRS).

CERTIFICATION: By signing this page I agree that the financial statements of the school have been properly audited as noted above pursuant to Article XXIV, and in the auditor's professional opinion, the Annual Financial Report (PDE-2057) submitted through CFRS is materially consistent with the audited financial statements.

Chief School Administrator


Signature
11.20.20
Date

Board Secretary


Signature
11.20.2020
Date

Joseph Deady

Contact Person

jdeady@ucfsd.net

Contact Person E-mail Address

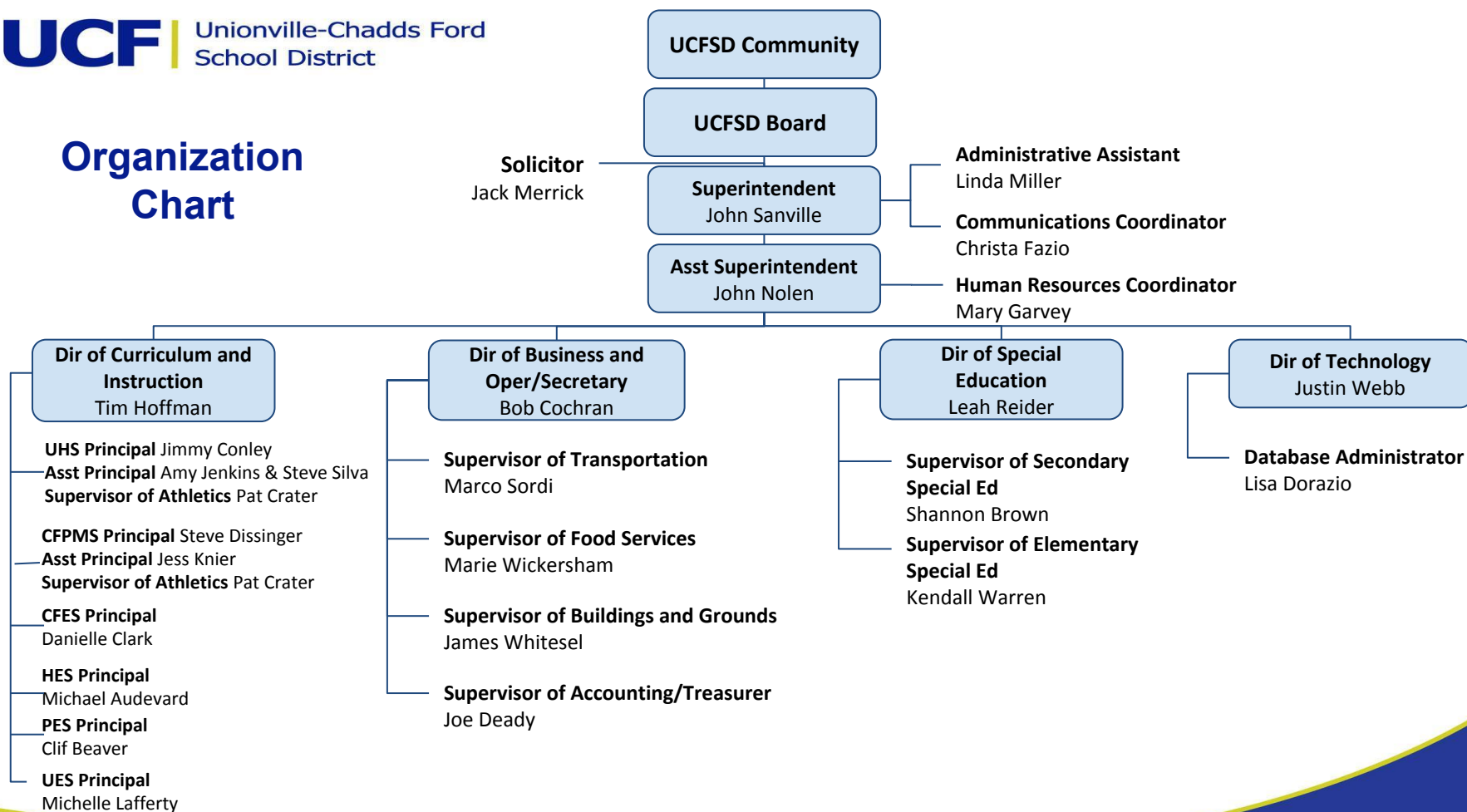
(610)347-0970

Ext :3320

Contact Person Telephone Number

Contact Person Fax Number

Organization Chart





Book	Policy Manual
Section	600 Finances
Title	GASB Statement 34
Code	622
Status	Active
Adopted	January 20, 2015

Purpose

The Board recognizes the need to implement the required accounting and financial reporting standards stipulated by the Pennsylvania Department of Education.

The primary objectives of implementing the Governmental Accounting Standards Board (GASB) Statement 34 are to assure compliance with state requirements, and properly account for both the financial and economic resources of the district.

Authority

Participation of the school district in any such activity shall be in accordance with Board policy.[\[1\]](#)[\[2\]](#)

Delegation of Responsibility

The responsibility to coordinate the compilation and preparation of all information necessary to implement this policy is delegated to the Director of Business and Operations.

The designated individual shall be responsible for implementing the necessary procedures to establish and maintain a fixed asset inventory, including depreciation schedules. Depreciation shall be computed on a straight-line basis over the useful lives of the assets, using an averaging convention. Normal maintenance and repairs shall be charged to expense as incurred; major renewals and betterments that materially extend the life or increase the value of the asset shall be capitalized. A schedule of accumulated depreciation shall be consistent from year to year. The basis for depreciation, including groups of assets and useful lives, shall be in writing and submitted for review to the Board.

The Director of Business and Operations shall prepare the required Management Discussion and Analysis (MD&A). The MD&A shall be in the form required by GASB Statement 34 and shall be submitted to the Board for approval, prior to publication.

Prior to submission of the MD&A for Board approval, the district's independent auditors shall review the MD&A, in accordance with SAS No. 52, "Required Supplementary Information".

Legal

1. 24 P.S. 218

2. 24 P.S. 613

Governmental Accounting Standards Board, Statement No. 34

LEA : 124158503 Unionville-Chadds Ford SD

Printed 12/11/2020 3:43:04 PM

Amounts Expressed in Whole Dollars		<u>General Fund</u> <u>(10)</u>	<u>Student Sponsored</u> <u>Activity Fund</u> <u>(21)</u>	<u>Public Purpose Trust</u> <u>(27)</u>	<u>Other Compt Approved</u> <u>(28)</u>	<u>Athletic / Activity</u> <u>(29)</u>
Assets And Deferred Outflows Of Resources						
Assets						
0100	Cash and Cash Equivalents	13,302,036				
0110	Investments	3,222,000				
0120	Taxes Receivable	1,100,385				
0130	Due From Other Funds					
0141	Due From Other Governments	4,887,183				
0142	State Revenue Receivable					
0143	Federal Revenue Receivable					
0145	Other Intergovernmental Revenue Receivable					
0146	Due from Primary Government					
0147	Due from Component Unit					
0150	Other Receivables	15,437				
0170	Inventories					
0180	Prepaid Expenses (Expenditures)	8,589				
0190	Other Current Assets					
Total Assets		\$22,535,630				
0910	Deferred Outflows of Resources					
Total Assets And Deferred Outflows Of Resources		\$22,535,630				

LEA : 124158503 Unionville-Chadds Ford SD

Printed 12/11/2020 3:43:04 PM

Amounts Expressed in Whole Dollars		<u>Capital Reserve (690.</u> <u>1850)</u> <u>(31)</u>	<u>Capital Reserve (1431)</u> <u>(32)</u>	<u>Other Capital Projects</u> <u>Fund</u> <u>(39)</u>	<u>Debt Service</u> <u>(40)</u>	<u>Permanent</u> <u>(90)</u>
Assets And Deferred Outflows Of Resources						
Assets						
0100	Cash and Cash Equivalents		3,167,092	4,022,543		
0110	Investments					
0120	Taxes Receivable					
0130	Due From Other Funds					
0141	Due From Other Governments					
0142	State Revenue Receivable					
0143	Federal Revenue Receivable					
0145	Other Intergovernmental Revenue Receivable					
0146	Due from Primary Government					
0147	Due from Component Unit					
0150	Other Receivables					
0170	Inventories					
0180	Prepaid Expenses (Expenditures)					
0190	Other Current Assets					
Total Assets			\$3,167,092	\$4,022,543		
0910	Deferred Outflows of Resources					
Total Assets And Deferred Outflows Of Resources			\$3,167,092	\$4,022,543		

Amounts Expressed in Whole Dollars		<u>Total Governmental Funds</u>
Assets And Deferred Outflows Of Resources		
Assets		
0100 Cash and Cash Equivalents	20,491,671	
0110 Investments	3,222,000	
0120 Taxes Receivable	1,100,385	
0130 Due From Other Funds		
0141 Due From Other Governments	4,887,183	
0142 State Revenue Receivable		
0143 Federal Revenue Receivable		
0145 Other Intergovernmental Revenue Receivable		
0146 Due from Primary Government		
0147 Due from Component Unit		
0150 Other Receivables	15,437	
0170 Inventories		
0180 Prepaid Expenses (Expenditures)	8,589	
0190 Other Current Assets		
Total Assets	\$29,725,265	
0910 Deferred Outflows of Resources		
Total Assets And Deferred Outflows Of Resources	\$29,725,265	

Amounts Expressed in Whole Dollars		<u>General Fund</u> <u>(10)</u>	<u>Student Sponsored</u> <u>Activity Fund</u> <u>(21)</u>	<u>Public Purpose Trust</u> <u>(27)</u>	<u>Other Compt Approved</u> <u>(28)</u>	<u>Athletic / Activity</u> <u>(29)</u>
Liabilities And Deferred Inflows Of Resources And Fund Balances						
Liabilities						
0400	Due to Other Funds	540,495				
0411	Due to Other Governments					
0412	Due to Primary Government					
0413	Due to Component Unit					
0420	Accounts Payable	787,723				
0430	Contracts Payable					
0440	Current Portion of Long-Term Debt					
0450	Short-Term Payables					
0461	Accrued Salaries and Benefits	10,917,618				
0462	Payroll Deductions and Withholding					
0480	Unearned Revenues	744,968				
0490	Other Current Liabilities					
Total Liabilities		\$12,990,804				
0950	Deferred Inflows of Resources					
Fund Balances						
0810	Nonspendable Fund Balance	8,589				
0820	Restricted Fund Balance					
0830	Committed Fund Balance	3,904,044				
0840	Assigned Fund Balance					
0850	Unassigned Fund Balance	5,632,193				
Total Fund Balances		\$9,544,826				
Total Liabilities, Deferred Inflows Of Resources And Fund Balances		\$22,535,630				

LEA : 124158503 Unionville-Chadds Ford SD

Printed 12/11/2020 3:43:04 PM

Amounts Expressed in Whole Dollars		<u>Capital Reserve (690.</u> <u>1850)</u> <u>(31)</u>	<u>Capital Reserve (1431)</u> <u>(32)</u>	<u>Other Capital Projects</u> <u>Fund</u> <u>(39)</u>	<u>Debt Service</u> <u>(40)</u>	<u>Permanent</u> <u>(90)</u>
Liabilities And Deferred Inflows Of Resources And Fund Balances						
Liabilities						
0400	Due to Other Funds			32,615		
0411	Due to Other Governments					
0412	Due to Primary Government					
0413	Due to Component Unit					
0420	Accounts Payable		13,183	1,325,197		
0430	Contracts Payable					
0440	Current Portion of Long-Term Debt					
0450	Short-Term Payables					
0461	Accrued Salaries and Benefits					
0462	Payroll Deductions and Withholding					
0480	Unearned Revenues					
0490	Other Current Liabilities					
Total Liabilities			\$13,183	\$1,357,812		
0950	Deferred Inflows of Resources					
Fund Balances						
0810	Nonspendable Fund Balance					
0820	Restricted Fund Balance		3,153,909	2,664,731		
0830	Committed Fund Balance					
0840	Assigned Fund Balance					
0850	Unassigned Fund Balance					
Total Fund Balances			\$3,153,909	\$2,664,731		
Total Liabilities, Deferred Inflows Of Resources And Fund Balances			\$3,167,092	\$4,022,543		

LEA : 124158503 Unionville-Chadds Ford SD

Printed 12/11/2020 3:43:04 PM

Amounts Expressed in Whole Dollars		<u>Total Governmental Funds</u>
Liabilities And Deferred Inflows Of Resources And Fund Balances		
Liabilities		
0400 Due to Other Funds		573,110
0411 Due to Other Governments		
0412 Due to Primary Government		
0413 Due to Component Unit		
0420 Accounts Payable		2,126,103
0430 Contracts Payable		
0440 Current Portion of Long-Term Debt		
0450 Short-Term Payables		
0461 Accrued Salaries and Benefits		10,917,618
0462 Payroll Deductions and Withholding		
0480 Unearned Revenues		744,968
0490 Other Current Liabilities		
Total Liabilities		\$14,361,799
0950 Deferred Inflows of Resources		
Fund Balances		
0810 Nonspendable Fund Balance		8,589
0820 Restricted Fund Balance		5,818,640
0830 Committed Fund Balance		3,904,044
0840 Assigned Fund Balance		
0850 Unassigned Fund Balance		5,632,193
Total Fund Balances		\$15,363,466
Total Liabilities, Deferred Inflows Of Resources And Fund Balances		\$29,725,265

Amounts Expressed in Whole Dollars	<u>General Fund</u> <u>(10)</u>	<u>Student Sponsored</u> <u>Activity Fund</u> <u>(21)</u>	<u>Public Purpose Trust</u> <u>(27)</u>	<u>Other Compt Approved</u> <u>(28)</u>	<u>Athletic / Activity</u> <u>(29)</u>
Revenues					
6000 Revenue from Local Sources	72,670,118				
7000 Revenue from State Sources	16,190,114				
8000 Revenue from Federal Sources	905,055				
Total Revenues	\$89,765,287				
Expenditures					
1000 Instruction	50,901,213				
2000 Support Services	27,122,776				
3000 Operation of Non-Instructional Services	1,741,840				
4000 Facilities Acquisition, Construction and Improvement Services					
5110 Debt Service	8,485,385				
5130 Refund of Prior Year Revenues / Receipts	10,835				
Total Expenditures	\$88,262,049				
Excess (Deficiency) Of Revenues Over Expenditures	\$1,503,238				
Other Financing Sources (Uses)					
9110 Face Value of Bonds Issued					
9120 Proceeds from Refunding of Bonds					
9130 Bond Premiums					
9200 Proceeds from Extended-Term Financing					
9300 Interfund Transfers - IN					
9400 Sale of or Compensation for Loss of Fixed Assets	4,600				
9710 Transfers from Component Units					
9720 Transfers from Primary Governments					
9910 Other Financing Sources Not Listed in the 9000 Series					
9990 Insurance Recoveries					
5120 Debt Service – Refunded Bonds					
5150 Bond Discounts					
5200 Interfund Transfers – Out	866,752				
5300 Transfers Out to Component Units/Primary Governments					
Total Other Financing Sources (Uses)	(\$862,152)				

Amounts Expressed in Whole Dollars	<u>Capital Reserve (690.1850)</u> <u>(31)</u>	<u>Capital Reserve (1431)</u> <u>(32)</u>	<u>Other Capital Projects</u> <u>Fund</u> <u>(39)</u>	<u>Debt Service</u> <u>(40)</u>	<u>Permanent</u> <u>(90)</u>
Revenues					
6000 Revenue from Local Sources		38,277	90,167		
7000 Revenue from State Sources					
8000 Revenue from Federal Sources					
Total Revenues		\$38,277	\$90,167		
Expenditures					
1000 Instruction					
2000 Support Services					
3000 Operation of Non-Instructional Services					
4000 Facilities Acquisition, Construction and Improvement Services		452,580	5,234,073		
5110 Debt Service					
5130 Refund of Prior Year Revenues / Receipts					
Total Expenditures		\$452,580	\$5,234,073		
Excess (Deficiency) Of Revenues Over Expenditures		(\$414,303)	(\$5,143,906)		
Other Financing Sources (Uses)					
9110 Face Value of Bonds Issued					
9120 Proceeds from Refunding of Bonds					
9130 Bond Premiums					
9200 Proceeds from Extended-Term Financing					
9300 Interfund Transfers - IN		866,752			
9400 Sale of or Compensation for Loss of Fixed Assets					
9710 Transfers from Component Units					
9720 Transfers from Primary Governments					
9910 Other Financing Sources Not Listed in the 9000 Series					
9990 Insurance Recoveries					
5120 Debt Service – Refunded Bonds					
5150 Bond Discounts					
5200 Interfund Transfers – Out					
5300 Transfers Out to Component Units/Primary Governments					
Total Other Financing Sources (Uses)		\$866,752			

Amounts Expressed in Whole Dollars	<u>Total Governmental Funds</u>
Revenues	
6000 Revenue from Local Sources	72,798,562
7000 Revenue from State Sources	16,190,114
8000 Revenue from Federal Sources	905,055
Total Revenues	\$89,893,731
Expenditures	
1000 Instruction	50,901,213
2000 Support Services	27,122,776
3000 Operation of Non-Instructional Services	1,741,840
4000 Facilities Acquisition, Construction and Improvement Services	5,686,653
5110 Debt Service	8,485,385
5130 Refund of Prior Year Revenues / Receipts	10,835
Total Expenditures	\$93,948,702
Excess (Deficiency) Of Revenues Over Expenditures	(\$4,054,971)
Other Financing Sources (Uses)	
9110 Face Value of Bonds Issued	
9120 Proceeds from Refunding of Bonds	
9130 Bond Premiums	
9200 Proceeds from Extended-Term Financing	
9300 Interfund Transfers - IN	866,752
9400 Sale of or Compensation for Loss of Fixed Assets	4,600
9710 Transfers from Component Units	
9720 Transfers from Primary Governments	
9910 Other Financing Sources Not Listed in the 9000 Series	
9990 Insurance Recoveries	
5120 Debt Service – Refunded Bonds	
5150 Bond Discounts	
5200 Interfund Transfers – Out	866,752
5300 Transfers Out to Component Units/Primary Governments	
Total Other Financing Sources (Uses)	\$4,600

Amounts Expressed in Whole Dollars		<u>General Fund</u> <u>(10)</u>	<u>Student Sponsored</u> <u>Activity Fund</u> <u>(21)</u>	<u>Public Purpose Trust</u> <u>(27)</u>	<u>Other Compt Approved</u> <u>(28)</u>	<u>Athletic / Activity</u> <u>(29)</u>
Special And Extraordinary Items						
9920	Special Items – Gains					
9930	Extraordinary Items – Gains					
5520	Special Items – Losses					
5530	Extraordinary Items – Losses					
Net Change In Fund Balances		\$641,086				
Fund Balance						
0001	Fund Balance - Beginning of Fiscal Year	8,903,741				
Fund Balance - End Of Year		\$9,544,827				

Amounts Expressed in Whole Dollars		<u>Capital Reserve (690.</u> <u>1850)</u> <u>(31)</u>	<u>Capital Reserve (1431)</u> <u>(32)</u>	<u>Other Capital Projects</u> <u>Fund</u> <u>(39)</u>	<u>Debt Service</u> <u>(40)</u>	<u>Permanent</u> <u>(90)</u>
Special And Extraordinary Items						
9920	Special Items – Gains					
9930	Extraordinary Items – Gains					
5520	Special Items – Losses					
5530	Extraordinary Items – Losses					
Net Change In Fund Balances			\$452,449	(\$5,143,906)		
Fund Balance						
0001	Fund Balance - Beginning of Fiscal Year		2,701,461	7,808,636		
Fund Balance - End Of Year			\$3,153,910	\$2,664,730		

Amounts Expressed in Whole Dollars		<u>Total Governmental</u> <u>Funds</u>
Special And Extraordinary Items		
9920	Special Items – Gains	
9930	Extraordinary Items – Gains	
5520	Special Items – Losses	
5530	Extraordinary Items – Losses	
Net Change In Fund Balances		(\$4,050,371)
Fund Balance		
0001	Fund Balance - Beginning of Fiscal Year	19,413,838
Fund Balance - End Of Year		\$15,363,467

LEA : 124158503 Unionville-Chadds Ford SD

Printed 12/11/2020 3:43:16 PM

Amounts Expressed in Whole Dollars	Food Service (51)	Child Care Operations (52)	Other Enterprise (58)	TOTAL	Internal Service (60)
Assets And Deferred Outflows Of Resources					
Current Assets					
0100 Cash and Cash Equivalents	653,589			653,589	415,338
0110 Investments					3,750,000
0130 Due From Other Funds	993			993	572,117
0141 Due From Other Governments	44,982			44,982	
0142 State Revenue Receivable					
0143 Federal Revenue Receivable					
0146 Due from Primary Government					
0147 Due from Component Unit					
0150 Other Receivables					
0170 Inventories	39,661			39,661	
0180 Prepaid Expenses (Expenditures)					
0190 Other Current Assets					211,128
Total Current Assets	\$739,225			\$739,225	\$4,948,583
Noncurrent Assets					
0211 Land					
0212 Site Improvements (Net)					
0220 Buildings and Building Improvements (Net)					
0230 Machinery, Equipment and Furniture (Net)	199,290			199,290	
0250 Construction in Progress					
0260 Long Term Prepayments					
0290 Other Noncurrent Assets					
Total Noncurrent Assets	\$199,290			\$199,290	
0910 Deferred Outflows of Resources	272,518			272,518	
Total Assets And Deferred Outflows Of Resources	\$1,211,033			\$1,211,033	\$4,948,583

LEA : 124158503 Unionville-Chadds Ford SD

Printed 12/11/2020 3:43:16 PM

Amounts Expressed in Whole Dollars	Food Service (51)	Child Care Operations (52)	Other Enterprise (58)	TOTAL	Internal Service (60)
Liabilities And Deferred Inflows Of Resources And Net Position					
Current Liabilities					
0400 Due to Other Funds					
0411 Due to Other Governments					
0413 Due to Component Unit					
0420 Accounts Payable					
0430 Contracts Payable					
0440 Current Portion of Long-Term Debt					
0450 Short-Term Payables					
0461 Accrued Salaries and Benefits					572,117
0462 Payroll Deductions and Withholding					
0480 Unearned Revenues	111,625			111,625	
0490 Other Current Liabilities					
Total Current Liabilities	\$111,625			\$111,625	\$572,117
Noncurrent Liabilities					
0510 Bonds Payable					
0520 Extended-Term Financing Agreements Payable					
0530 Lease-Purchase Obligations					
0540 Accumulated Compensated Absences					
0550 Authority Lease Obligations					
0560 Other Post-Employment Benefits (OPEB)	129,402			129,402	
0570 Net Pension Liability	1,951,480			1,951,480	
0599 Other Noncurrent Liabilities					
Total Noncurrent Liabilities	\$2,080,882			\$2,080,882	
Total Liabilities	\$2,192,507			\$2,192,507	\$572,117
0950 Deferred Inflows of Resources	88,900			88,900	
Net Position					
0791 Net Investment in Capital Assets	199,290			199,290	
0008 Restricted Net Position (0792 – 0798)					
0799 Unrestricted Net Position	(1,269,664)			(1,269,664)	4,376,466
Total Net Position	(\$1,070,374)			(\$1,070,374)	\$4,376,466
Total Liabilities And Deferred Inflows Of Resources And Net Position	\$1,211,033			\$1,211,033	\$4,948,583

Amounts Expressed in Whole Dollars	Food Service (51)	Child Care Operations (52)	Other Enterprise (58)	TOTAL	Internal Service (60)
Operating Revenues					
6600 Food Service Revenue	1,040,027			1,040,027	
0071 Charges for Services					7,269,002
0072 Other Operating Revenue					
Total Operating Revenues	\$1,040,027			\$1,040,027	\$7,269,002
Operating Expenses					
100 Personnel Services – Salaries	613,318			613,318	
200 Personnel Services – Employee Benefits	621,327			621,327	7,256,623
300 Purchased Professional and Technical Services					12,379
400 Purchased Property Services					
500 Other Purchased Services					
600 Supplies	655,971			655,971	
740 Depreciation	61,213			61,213	
810 Dues and Fees					
890 Miscellaneous Expenditures					
Total Operating Expenses	\$1,951,829			\$1,951,829	\$7,269,002
Operating Income (Loss)	(\$911,802)			(\$911,802)	\$0
Non Operating Revenues (Expenses)					
6500 Earnings on Investments	13,421			13,421	81,359
6920 Contributions and Donations from Private Sources					
6930 Gains or Losses on Sale of Fixed Assets					
6991 Refunds of a Prior Year Expenditure					
7000 Revenue from State Sources	143,749			143,749	
8000 Revenue from Federal Sources	186,425			186,425	
9990 Insurance Recoveries					
820 Claims and Judgments Against the LEA					
830 Interest					
TOTAL Non Operating Revenues (Expenses)	\$343,595			\$343,595	\$81,359
Income (Loss) Before Contributions And Transfers	(\$568,207)			(\$568,207)	\$81,359

Amounts Expressed in Whole Dollars	<u>Food Service</u> <u>(51)</u>	<u>Child Care Operations</u> <u>(52)</u>	<u>Other Enterprise</u> <u>(58)</u>	<u>TOTAL</u>	<u>Internal Service</u> <u>(60)</u>
Contributions, Transfers, and Special and Extraordinary Items					
5200 Interfund Transfers – Out					
5300 Transfers Out to Component Units/Primary Governments					
5520 Special Items – Losses					
5530 Extraordinary Items – Losses					
9300 Interfund Transfers - IN					
9500 Capital Contributions					
9700 Transfers IN From Component Units/Primary Governments					
9920 Special Items – Gains					
9930 Extraordinary Items – Gains					
Change In Net Position	(\$568,207)			(\$568,207)	\$81,359
0002 Net Position - Beginning of Fiscal Year	(502,167)			(502,167)	4,295,107
0003 Accounting Changes / Residual Equity Transfers					
Net Position - End Of Year	(\$1,070,374)			(\$1,070,374)	\$4,376,466

LEA : 124158503 Unionville-Chadds Ford SD

Printed 12/11/2020 3:43:28 PM

Amounts Expressed in Whole Dollars	<u>Food Service</u> <u>(51)</u>	<u>Child Care Operations</u> <u>(52)</u>	<u>Other Enterprise</u> <u>(58)</u>	<u>TOTAL</u>	<u>Internal Service(60)</u>
Cash Flows From Operating Activities					
0011 Cash Receipts From Users	1,075,766			1,075,766	
0012 Cash Receipts From Assessments Made to Other Funds					7,293,648
0013 Cash Receipts From Earnings on Investments					
0014 Cash Receipts From Other Operating Revenue					
0015 Cash Payments To Employees For Services	927,848			927,848	
0016 Cash Payments For Insurance Claims					7,281,269
0017 Cash Payments To Suppliers For Goods and Services	624,230			624,230	
0018 Cash Payments For Other Operating Expenses					12,379
Net Cash Provided By (Used For) Operating Activities	(\$476,312)			(\$476,312)	\$0
Cash Flows From Non-Capital Financing Activities					
0021 Receipts From Local Sources - 6000					
0022 Receipts From State Sources - 7000	148,070			148,070	
0023 Receipts From Federal Sources -8000	161,861			161,861	
0024 Notes and Loans Received (Repaid)					
0025 Interest Paid on Notes/Loans - 5100-830					
0026 Operating Transfers In (Out)/Residual Equity Trans					
0027 Operating Transfers In (Out) Primary Government / Comp Unit					
0028 Receipts From Refund of Prior Year Expenditures - 6991					
0029 Special and Extraordinary Gains (losses)					
0030 Receipts from Insurance Recoveries -9990					
Net Cash Prov By (Used for) Non-Capital Financing Activities	\$309,931			\$309,931	
Cash Flows From Capital and Related Financing Activities					
0031 Payments For Fac Acq, Const, and Imp - 4000	(41,460)			(41,460)	
0032 Gain / (Loss) on Sale of Fixed Assets - 6930					
0033 Proceeds From Extended Term Financing - 9200					
0034 Principal Paid on Financing Agreements					
0035 Interest Paid on Financing Agreements - 5100-830					
0036 (Inc) Dec in Contributed Capital					
Net Cash Prov By (Used for) Capital and Related Financing Activities	(\$41,460)			(\$41,460)	
Cash Flows From Investing Activities					
0041 Earnings on Investments - 6500	13,421			13,421	81,359
0042 Purchase of Inv Securities / Deposits to Inv Pools					
0043 Receipts From Investment Pool Withdrawals					
0044 Proceeds from Sale and Maturity of Inv Securities					

LEA : 124158503 Unionville-Chadds Ford SD

Printed 12/11/2020 3:43:28 PM

0045 Loans Received (Paid)

Net Cash Prov By (Used for) Investing Activities	\$13,421	\$13,421	\$81,359
--	----------	----------	----------

LEA : 124158503 Unionville-Chadds Ford SD

Printed 12/11/2020 3:43:28 PM

	Food Service (51)	Child Care Operations (52)	Other Enterprise (58)	TOTAL	Internal Service (60)
Net Increase (Decrease) in Cash Flows	(194,420)			(194,420)	81,359
0004 Cash and Cash Equivalents Beginning of Year	848,009			848,009	333,979
Cash and Cash Equivalents at Year End	\$653,589			\$653,589	\$415,338
Reconciliation of Operating Income (Loss) To Net Cash Provided by (Used For) Operating Activities					
0005 Operating Income (Loss) per REP	(911,802)			(911,802)	
Adjustments					
0051 Depreciation and Net Amortization	61,213			61,213	
0052 Provision for Uncollectible Accounts					
0053 Other Adjustments	49,738			49,738	
Effect of Changes in Assets, Liabilities, Deferred Outflows and Deferred Inflows					
0054 (Inc) Dec In Accounts Receivable (0120-0150)					
0055 Advances to Other Funds (0160)					
0056 (Inc) Dec in Inventories (0170)	(17,887)			(17,887)	
0057 (Inc) Dec in Prepaid Expenses (0180)					
0058 (Inc) Dec in Other Current or Noncurrent Assets	138,851			138,851	24,646
0064 Deferred Outflows (0910)	11,476			11,476	
0059 Inc (Dec) in Accounts Payable (0400-0450)	(110)			(110)	
0060 Inc (Dec) in Accrued Salaries/Benefits (0461)	(17,358)			(17,358)	(24,646)
0065 Inc (Dec) in Net Pension Liabilities (0570)	135,318			135,318	
0066 Inc (Dec) in Other Postemp Benefit Oblig (0560)	2,549			2,549	
0061 Inc (Dec) in Payroll Deductions/Withholding (0462)					
0062 Inc (Dec) in Unearned Revenue (0480)	35,739			35,739	
0063 Inc (Dec) in Other Current or Noncurrent Liabilities					
0067 Deferred Inflows (0950)	35,961			35,961	
Total Adjustments	\$435,490			\$435,490	
Cash Provided By (Used for) Total	(\$476,312)			(\$476,312)	

COMBINED STATEMENT OF CASH FLOWS
SCHEDULE OF NONCASH INVESTING, CAPITAL, AND FINANCING ACTIVITIES

Explanation of Transaction and Balance Sheet Effect	Amount
Total	

LEA : 124158503 Unionville-Chadds Ford SD

Printed 12/11/2020 3:43:33 PM

Amounts Expressed in Whole Dollars		<u>Private Purpose Trust</u> <u>(71)</u>	<u>Investment Trust</u> <u>(72)</u>	<u>Pension Trust</u> <u>(73)</u>	<u>Student Activity Custodial</u> <u>(81)</u>
Assets And Deferred Outflows Of Resources					
Assets					
0100	Cash and Cash Equivalents	91,281			368,195
0110	Investments				
0130	Due From Other Funds				
0140	Due from Other Governments, Primary Government and Component Units				
0150	Other Receivables				
0170	Inventories				
0180	Prepaid Expenses (Expenditures)				
0190	Other Current Assets				
0220	Buildings and Building Improvements (Net)				
0230	Machinery, Equipment and Furniture (Net)				
Total Assets		\$91,281			\$368,195
0910	Deferred Outflows of Resources				
Total Assets And Deferred Outflows Of Resources		\$91,281			\$368,195

LEA : 124158503 Unionville-Chadds Ford SD

Printed 12/11/2020 3:43:33 PM

Amounts Expressed in Whole Dollars		<u>Other Custodial</u> <u>(89)</u>	<u>Fiduciary Component Units</u> <u>(98)</u>	<u>Total Fiduciary Funds</u>
Assets And Deferred Outflows Of Resources				
Assets				
0100	Cash and Cash Equivalents			459,476
0110	Investments			
0130	Due From Other Funds			
0140	Due from Other Governments, Primary Government and Component Units			
0150	Other Receivables			
0170	Inventories			
0180	Prepaid Expenses (Expenditures)			
0190	Other Current Assets			
0220	Buildings and Building Improvements (Net)			
0230	Machinery, Equipment and Furniture (Net)			
Total Assets				\$459,476
0910	Deferred Outflows of Resources			
Total Assets And Deferred Outflows Of Resources				\$459,476

LEA : 124158503 Unionville-Chadds Ford SD

Printed 12/11/2020 3:43:33 PM

Amounts Expressed in Whole Dollars		<u>Private Purpose Trust</u>	<u>Investment Trust</u>	<u>Pension Trust</u>	<u>Student Activity Custodial</u>
		<u>(71)</u>	<u>(72)</u>	<u>(73)</u>	<u>(81)</u>
Liabilities, Deferred Inflows Of Resources And Net Position					
Liabilities					
0400	Due to Other Funds				
0410	Due to Other Governments, Primary Government and Component Units				
0420	Accounts Payable				
0430	Contracts Payable				
0450	Short-Term Payables				
0460	Payroll Accruals and Withholdings				
0480	Unearned Revenues				
0490	Other Current Liabilities				368,195
Total Liabilities					\$368,195
0950	Deferred Inflows of Resources				
Net Position					
0791	Net Investment in Capital Assets				
0009	Restricted Net Position (0792 – 0798)	91,281			
0799	Unrestricted Net Position				
Total Net Position		\$91,281			
Total Liabilities, Deferred Inflows Of Resources And Net Position		\$91,281			\$368,195

LEA : 124158503 Unionville-Chadds Ford SD

Printed 12/11/2020 3:43:33 PM

Amounts Expressed in Whole Dollars		<u>Other Custodial</u> <u>(89)</u>	<u>Fiduciary Component Units</u> <u>(98)</u>	<u>Total Fiduciary Funds</u>
Liabilities, Deferred Inflows Of Resources And Net Position				
Liabilities				
0400	Due to Other Funds			
0410	Due to Other Governments, Primary Government and Component Units			
0420	Accounts Payable			
0430	Contracts Payable			
0450	Short-Term Payables			
0460	Payroll Accruals and Withholdings			
0480	Unearned Revenues			
0490	Other Current Liabilities			368,195
Total Liabilities				\$368,195
0950	Deferred Inflows of Resources			
Net Position				
0791	Net Investment in Capital Assets			
0009	Restricted Net Position (0792 – 0798)			91,281
0799	Unrestricted Net Position			
Total Net Position				\$91,281
Total Liabilities, Deferred Inflows Of Resources And Net Position				\$459,476

LEA : 124158503 Unionville-Chadds Ford SD

Printed 12/11/2020 3:43:35 PM

Amounts Expressed in Whole Dollars	<u>Private Purpose Trust</u> (71)	<u>Investment Trust</u> (72)	<u>Pension Trust</u> (73)	<u>Student Activity</u> <u>Custodial</u> (81)	<u>Other Custodial</u> (89)	<u>Fiduciary Component</u> <u>Units</u> (98)
Additions						
0091 Gifts and Contributions	46,950					
0095 Net Investment Earnings						
0092 Other Additions						
Deductions						
0093 Scholarships Awarded	7,000					
0094 Other Deductions						
Change In Net Position	\$39,950					
0006 Net Position – Beginning of Fiscal Year	51,331					
0007 Net Position Held in Trust for Pension Benefits						
Net Position - End of Fiscal Year	\$91,281					

LEA : 124158503 Unionville-Chadds Ford SD

Printed 12/11/2020 3:43:35 PM

Amounts Expressed in Whole Dollars		<u>Total Fiduciary</u>
		<u>Funds</u>
Additions		
0091	Gifts and Contributions	46,950
0095	Net Investment Earnings	
0092	Other Additions	
Deductions		
0093	Scholarships Awarded	7,000
0094	Other Deductions	
Change In Net Position		\$39,950
0006	Net Position – Beginning of Fiscal Year	51,331
0007	Net Position Held in Trust for Pension Benefits	
Net Position - End of Fiscal Year		\$91,281

	Revenue Reported In Current Year	Current Year Tax Accrual	Prior Year Tax Accrual	Taxes Collected In Current Year
Revenue from Local Sources				
6111 Current Real Estate Taxes	67,844,848.87			67,844,848.87
6112 Interim Real Estate Taxes	281,689.98	9,244.00	5,102.90	277,548.88
6113 Public Utility Realty Taxes	62,045.14			62,045.14
6153 Current Act 511 Real Estate Transfer Taxes	1,324,397.84	135,279.71	136,853.00	1,325,971.13
6411 Delinquent Real Estate Taxes	1,277,044.91	210,894.00	197,676.41	1,263,827.32
6500 Earnings on Investments	733,576.94			
6700 Revenues from LEA Activities	249,089.49			
6832 Federal IDEA Revenue Received as Pass Through	519,363.63			
6910 Rentals	62,720.36			
6920 Contributions and Donations from Private Sources	10,000.00			
6941 Regular Day School Tuition	2,518.31			
6944 Receipts from Other LEAs in Pennsylvania - Education	221,343.63			
6949 Other Tuition from Patrons	13,150.00			
6992 Energy Efficiency Revenues and Incentives	44,494.49			
6999 Other Revenues Not Specified Above	23,834.46			
TOTAL Revenue from Local Sources	\$72,670,118.05	\$355,417.71	\$339,632.31	\$70,774,241.34

	Revenue Reported In Current Year			
Revenue from State Sources				
7111 Basic Education Funding-Formula	3,368,201.35			
7112 Basic Education Funding-Social Security	1,384,970.46			
7160 Tuition for Orphans Subsidy	28,260.91			
7271 Special Education funds for School-Aged Pupils	1,841,595.45			
7311 Pupil Transportation Subsidy	457,148.81			
7312 Nonpublic and Charter School Pupil Transportation Subsidy	105,105.00			
7320 Rental and Sinking Fund Payments / Building Reimbursement Subsidy	288,212.05			
7330 Health Services (Medical, Dental, Nurse, Act 25)	78,079.48			
7340 State Property Tax Reduction Allocation	1,488,557.33			
7505 Ready to Learn Block Grant	127,325.00			
7599 Other State Revenue Not Listed Elsewhere in the 7000 Series	250.00			
7820 State Share of Retirement Contributions	7,022,407.72			
TOTAL Revenue from State Sources	\$16,190,113.56			

	Revenue Reported In Current Year			
<u>Revenue from Federal Sources</u>				
8514 NCLB, Title I - Improving the Academic Achievement of the Disadvantaged	103,787.00			
8515 NCLB, Title II - Preparing, Training and Recruiting High Quality Teachers and Principals	51,656.00			
8516 NCLB, Title III - Language Instruction for Limited English Proficient and Immigrant Students	8,671.64			
8517 NCLB, Title IV - 21St Century Schools	10,000.00			
8810 School-Based Access Medicaid Reimbursement Program (SBAP) Reimbursements (Access)	730,940.71			
TOTAL Revenue from Federal Sources	\$905,055.35			

	Revenue Reported In Current Year			
<u>Other Financing Sources</u>				
9400 Sale of or Compensation for Loss of Fixed Assets	4,600.00			
TOTAL Other Financing Sources	\$4,600.00			
TOTAL FROM ALL SOURCES	\$89,769,886.96	\$355,417.71	\$339,632.31	\$70,774,241.34

LEA : 124158503 Unionville-Chadds Ford SD

Printed 12/11/2020 3:43:43 PM

	<u>General Fund (10)</u>	<u>Student Sponsored Activity Fund (21)</u>	<u>Public Purpose Trust (27)</u>	<u>Other Compt Approved (28)</u>	<u>Athletic / Activity (29)</u>	<u>Capital Reserve (690, 1850) (31)</u>
6000 Revenue from Local Sources						
6111 Current Real Estate Taxes	67,844,848.87					
6112 Interim Real Estate Taxes	281,689.98					
6113 Public Utility Realty Taxes	62,045.14					
6153 Current Act 511 Real Estate Transfer Taxes	1,324,397.84					
6411 Delinquent Real Estate Taxes	1,277,044.91					
6500 Earnings on Investments	733,576.94					
6700 Revenues from LEA Activities	249,089.49					
6832 Federal IDEA Revenue Received as Pass Through	519,363.63					
6910 Rentals	62,720.36					
6920 Contributions and Donations from Private Sources	10,000.00					
6941 Regular Day School Tuition	2,518.31					
6944 Receipts from Other LEAs in Pennsylvania - Education	221,343.63					
6949 Other Tuition from Patrons	13,150.00					
6992 Energy Efficiency Revenues and Incentives	44,494.49					
6999 Other Revenues Not Specified Above	23,834.46					
6000 Total Revenue from Local Sources	\$72,670,118.05					
7000 Revenue from State Sources						
7111 Basic Education Funding-Formula	3,368,201.35					
7112 Basic Education Funding-Social Security	1,384,970.46					
7160 Tuition for Orphans Subsidy	28,260.91					
7271 Special Education funds for School-Aged Pupils	1,841,595.45					
7311 Pupil Transportation Subsidy	457,148.81					
7312 Nonpublic and Charter School Pupil Transportation Subsidy	105,105.00					
7320 Rental and Sinking Fund Payments / Building Reimbursement Subsidy	288,212.05					
7330 Health Services (Medical, Dental, Nurse, Act 25)	78,079.48					
7340 State Property Tax Reduction Allocation	1,488,557.33					
7505 Ready to Learn Block Grant	127,325.00					
7599 Other State Revenue Not Listed Elsewhere in the 7000 Series	250.00					
7820 State Share of Retirement Contributions	7,022,407.72					
7000 Total Revenue from State Sources	\$16,190,113.56					
8000 Revenue from Federal Sources						
8514 NCLB, Title I - Improving the Academic Achievement of the Disadvantaged	103,787.00					
8515 NCLB, Title II - Preparing, Training and Recruiting High Quality Teachers and Principals	51,656.00					
8516 NCLB, Title III - Language Instruction for Limited English Proficient and Immigrant Students	8,671.64					

LEA : 124158503 Unionville-Chadds Ford SD

Printed 12/11/2020 3:43:43 PM

	Capital Reserve (1431) (32)	Other Capital Projects Fund (39)	Debt Service (40)	Permanent (90)	Total
6000 Revenue from Local Sources					
6111 Current Real Estate Taxes					67,844,848.87
6112 Interim Real Estate Taxes					281,689.98
6113 Public Utility Realty Taxes					62,045.14
6153 Current Act 511 Real Estate Transfer Taxes					1,324,397.84
6411 Delinquent Real Estate Taxes					1,277,044.91
6500 Earnings on Investments	38,276.52	90,166.77			862,020.23
6700 Revenues from LEA Activities					249,089.49
6832 Federal IDEA Revenue Received as Pass Through					519,363.63
6910 Rentals					62,720.36
6920 Contributions and Donations from Private Sources					10,000.00
6941 Regular Day School Tuition					2,518.31
6944 Receipts from Other LEAs in Pennsylvania - Education					221,343.63
6949 Other Tuition from Patrons					13,150.00
6992 Energy Efficiency Revenues and Incentives					44,494.49
6999 Other Revenues Not Specified Above					23,834.46
6000 Total Revenue from Local Sources	\$38,276.52	\$90,166.77			\$72,798,561.34
7000 Revenue from State Sources					
7111 Basic Education Funding-Formula					3,368,201.35
7112 Basic Education Funding-Social Security					1,384,970.46
7160 Tuition for Orphans Subsidy					28,260.91
7271 Special Education funds for School-Aged Pupils					1,841,595.45
7311 Pupil Transportation Subsidy					457,148.81
7312 Nonpublic and Charter School Pupil Transportation Subsidy					105,105.00
7320 Rental and Sinking Fund Payments / Building Reimbursement Subsidy					288,212.05
7330 Health Services (Medical, Dental, Nurse, Act 25)					78,079.48
7340 State Property Tax Reduction Allocation					1,488,557.33
7505 Ready to Learn Block Grant					127,325.00
7599 Other State Revenue Not Listed Elsewhere in the 7000 Series					250.00
7820 State Share of Retirement Contributions					7,022,407.72
7000 Total Revenue from State Sources					\$16,190,113.56
8000 Revenue from Federal Sources					
8514 NCLB, Title I - Improving the Academic Achievement of the Disadvantaged					103,787.00
8515 NCLB, Title II - Preparing, Training and Recruiting High Quality Teachers and Principals					51,656.00
8516 NCLB, Title III - Language Instruction for Limited English Proficient and Immigrant Students					8,671.64

LEA : 124158503 Unionville-Chadds Ford SD

Printed 12/11/2020 3:43:43 PM

	<u>General Fund (10)</u>	<u>Student Sponsored Activity Fund (21)</u>	<u>Public Purpose Trust (27)</u>	<u>Other Compt Approved (28)</u>	<u>Athletic / Activity (29)</u>	<u>Capital Reserve (690, 1850) (31)</u>
8000 Revenue from Federal Sources						
8517 NCLB, Title IV - 21st Century Schools	10,000.00					
8810 School-Based Access Medicaid Reimbursement Program (SBAP) Reimbursements (Access)	730,940.71					
8000 Total Revenue from Federal Sources	\$905,055.35					
9000 Other Financing Sources						
9310 General Fund Transfers						
9400 Sale of or Compensation for Loss of Fixed Assets	4,600.00					
9000 Total Other Financing Sources	\$4,600.00					
Total From All Sources	\$89,769,886.96					

LEA : 124158503 Unionville-Chadds Ford SD

Printed 12/11/2020 3:43:43 PM

	<u>Capital Reserve</u> <u>(1431) (32)</u>	<u>Other Capital</u> <u>Projects Fund (39)</u>	<u>Debt Service (40)</u>	<u>Permanent (90)</u>	<u>Total</u>
8000 Revenue from Federal Sources					
8517 NCLB, Title IV - 21st Century Schools					10,000.00
8810 School-Based Access Medicaid Reimbursement Program (SBAP) Reimbursements (Access)					730,940.71
8000 Total Revenue from Federal Sources					\$905,055.35
9000 Other Financing Sources					
9310 General Fund Transfers	866,752.00				866,752.00
9400 Sale of or Compensation for Loss of Fixed Assets					4,600.00
9000 Total Other Financing Sources	\$866,752.00				\$871,352.00
Total From All Sources	\$905,028.52	\$90,166.77			\$90,765,082.25

	<u>General Fund (10)</u>	<u>Student Sponsored Activity Fund (21)</u>	<u>Public Purpose Trust (27)</u>	<u>Other Compt Approved (28)</u>	<u>Athletic / Activity (29)</u>	<u>Capital Reserve (690.1850) (31)</u>
Revenue from Local Sources	72,670,118.05					
Revenue from State Sources	16,190,113.56					
Revenue from Federal Sources	905,055.35					
Other Financing Sources	4,600.00					
Total From All Sources	\$89,769,886.96					

LEA : 124158503 Unionville-Chadds Ford SD

Printed 12/11/2020 3:43:48 PM

	<u>Capital Reserve (1431)</u> <u>(32)</u>	<u>Other Capital Projects</u> <u>Fund (39)</u>	<u>Debt Service (40)</u>	<u>Permanent (90)</u>	<u>Total</u>
Revenue from Local Sources	38,276.52	90,166.77			72,798,561.34
Revenue from State Sources					16,190,113.56
Revenue from Federal Sources					905,055.35
Other Financing Sources	866,752.00				871,352.00
Total From All Sources	\$905,028.52	\$90,166.77			\$90,765,082.25

LEA : 124158503 Unionville-Chadds Ford SD

Printed 12/11/2020 3:43:55 PM

General Fund (10)	
1000 Instruction	<u>Total</u>
100 <u>Personnel Services – Salaries</u>	
100 Personnel Services – Salaries	27,765,552.80
Total Personnel Services – Salaries	\$27,765,552.80
200 <u>Personnel Services – Employee Benefits</u>	
220 Social Security Contributions	1,960,380.31
230 PSERS Retirement Contributions	9,152,065.95
250 Unemployment Compensation	12,942.38
260 Workers' Compensation	129,720.11
270 Group Insurance – Self-Insurance	4,631,460.02
Total Personnel Services – Employee Benefits	\$15,886,568.77
300 <u>Purchased Professional and Technical Services</u>	
322 Professional Educational Services – Ius	1,986,438.54
329 Professional Educational Services – Other	1,572,723.97
330 Other Professional Services	578,154.62
390 Other Purchased Professional and Technical Services	221.33
Total Purchased Professional and Technical Services	\$4,137,538.46
400 <u>Purchased Property Services</u>	
430 Repairs and Maintenance Services	195,963.87
Total Purchased Property Services	\$195,963.87
500 <u>Other Purchased Services</u>	
530 Communications	398.77
561 Tuition To Other School Districts Within the State	81,043.78
562 Tuition To Pennsylvania Charter Schools	988,216.95
564 Tuition To Career and Technology Centers	704,443.97
567 Tuition To Approved Private Schools (APS) and PA Chartered Schools for the Deaf and Blind	56,997.42
569 Tuition – Other	44,234.39
580 Travel	65,392.11
596 Direct Payments To Intermediate Units	16,759.04
599 Other Miscellaneous Purchased Services	221,343.42
Total Other Purchased Services	\$2,178,829.85
600 <u>Supplies</u>	
610 General Supplies	347,308.29
630 Food	675.22
640 Books and Periodicals	163,411.88
650 Supplies & Fees – Technology Related	25,860.49
Total Supplies	\$537,255.88
700 <u>Property</u>	
752 Capital Equipment – Original and Additional	184,280.42
762 Capitalized Equipment - Replacement	15,222.50
Total Property	\$199,502.92
Total 1000 Instruction	\$50,901,212.55

LEA : 124158503 Unionville-Chadds Ford SD

Printed 12/11/2020 3:43:55 PM

General Fund (10)

1100 Regular Programs – Elementary / Secondary	Elementary	Secondary	Federal	Total
100 Personnel Services – Salaries				
100 Personnel Services – Salaries	10,309,275.17	10,706,170.74	82,224.23	21,097,670.14
Total Personnel Services – Salaries	\$10,309,275.17	\$10,706,170.74	\$82,224.23	\$21,097,670.14
200 Personnel Services – Employee Benefits				
220 Social Security Contributions	729,718.35	759,502.77		1,489,221.12
230 PSERS Retirement Contributions	3,413,483.18	3,552,809.02	21,772.77	6,988,064.97
250 Unemployment Compensation	4,035.67	4,200.39		8,236.06
260 Workers' Compensation	51,114.78	53,201.09		104,315.87
270 Group Insurance – Self-Insurance	1,567,327.89	1,631,300.45		3,198,628.34
Total Personnel Services – Employee Benefits	\$5,765,679.87	\$6,001,013.72	\$21,772.77	\$11,788,466.36
300 Purchased Professional and Technical Services				
322 Professional Educational Services – lus	21.15	21.15	2,449.30	2,491.60
329 Professional Educational Services – Other	330,677.40	315,329.97		646,007.37
330 Other Professional Services			4,520.65	4,520.65
Total Purchased Professional and Technical Services	\$330,698.55	\$315,351.12	\$6,969.95	\$653,019.62
400 Purchased Property Services				
430 Repairs and Maintenance Services	85,338.73	107,302.40		192,641.13
Total Purchased Property Services	\$85,338.73	\$107,302.40		\$192,641.13
500 Other Purchased Services				
530 Communications	199.39	199.38		398.77
562 Tuition To Pennsylvania Charter Schools	107,306.88	476,673.61		583,980.49
569 Tuition – Other		15,159.39		15,159.39
580 Travel	21,183.29	37,295.44	184.84	58,663.57
Total Other Purchased Services	\$128,689.56	\$529,327.82	\$184.84	\$658,202.22
600 Supplies				
610 General Supplies	85,308.91	175,141.91	1,307.20	261,758.02
640 Books and Periodicals	87,967.07	72,207.52		160,174.59
650 Supplies & Fees – Technology Related		279.99		279.99
Total Supplies	\$173,275.98	\$247,629.42	\$1,307.20	\$422,212.60
700 Property				
752 Capital Equipment – Original and Additional	89,888.51	94,391.91		184,280.42
762 Capitalized Equipment - Replacement	6,807.50	8,415.00		15,222.50
Total Property	\$96,696.01	\$102,806.91		\$199,502.92
Total 1100 Regular Programs – Elementary / Secondary	\$16,889,653.87	\$18,009,602.13	\$112,458.99	\$35,011,714.99

LEA : 124158503 Unionville-Chadds Ford SD

Printed 12/11/2020 3:43:55 PM

General Fund (10)

1110 Regular Programs

	Elementary	Secondary	Federal	Total
100 <u>Personnel Services – Salaries</u>				
100 Personnel Services – Salaries	10,309,275.17	10,706,170.74		21,015,445.91
Total Personnel Services – Salaries	\$10,309,275.17	\$10,706,170.74		\$21,015,445.91
200 <u>Personnel Services – Employee Benefits</u>				
220 Social Security Contributions	729,718.35	759,502.77		1,489,221.12
230 PSERS Retirement Contributions	3,413,483.18	3,552,809.02		6,966,292.20
250 Unemployment Compensation	4,035.67	4,200.39		8,236.06
260 Workers' Compensation	51,114.78	53,201.09		104,315.87
270 Group Insurance – Self-Insurance	1,567,327.89	1,631,300.45		3,198,628.34
Total Personnel Services – Employee Benefits	\$5,765,679.87	\$6,001,013.72		\$11,766,693.59
300 <u>Purchased Professional and Technical Services</u>				
322 Professional Educational Services – lus	21.15	21.15		42.30
329 Professional Educational Services – Other	330,677.40	315,329.97		646,007.37
Total Purchased Professional and Technical Services	\$330,698.55	\$315,351.12		\$646,049.67
400 <u>Purchased Property Services</u>				
430 Repairs and Maintenance Services	85,338.73	107,302.40		192,641.13
Total Purchased Property Services	\$85,338.73	\$107,302.40		\$192,641.13
500 <u>Other Purchased Services</u>				
530 Communications	199.39	199.38		398.77
562 Tuition To Pennsylvania Charter Schools	107,306.88	476,673.61		583,980.49
569 Tuition – Other		15,159.39		15,159.39
580 Travel	21,183.29	37,295.44		58,478.73
Total Other Purchased Services	\$128,689.56	\$529,327.82		\$658,017.38
600 <u>Supplies</u>				
610 General Supplies	85,308.91	175,141.91		260,450.82
640 Books and Periodicals	87,967.07	72,207.52		160,174.59
650 Supplies & Fees – Technology Related		279.99		279.99
Total Supplies	\$173,275.98	\$247,629.42		\$420,905.40
700 <u>Property</u>				
752 Capital Equipment – Original and Additional	89,888.51	94,391.91		184,280.42
762 Capitalized Equipment - Replacement	6,807.50	8,415.00		15,222.50
Total Property	\$96,696.01	\$102,806.91		\$199,502.92
Total 1110 Regular Programs	\$16,889,653.87	\$18,009,602.13		\$34,899,256.00

LEA : 124158503 Unionville-Chadds Ford SD

Printed 12/11/2020 3:43:55 PM

General Fund (10)				
1190 Federally-Funded Regular Programs	<u>Elementary</u>	<u>Secondary</u>	<u>Federal</u>	<u>Total</u>
100 <u>Personnel Services – Salaries</u>				
100 Personnel Services – Salaries			82,224.23	82,224.23
Total Personnel Services – Salaries			\$82,224.23	\$82,224.23
200 <u>Personnel Services – Employee Benefits</u>				
230 PSERS Retirement Contributions			21,772.77	21,772.77
Total Personnel Services – Employee Benefits			\$21,772.77	\$21,772.77
300 <u>Purchased Professional and Technical Services</u>				
322 Professional Educational Services – Ius			2,449.30	2,449.30
330 Other Professional Services			4,520.65	4,520.65
Total Purchased Professional and Technical Services			\$6,969.95	\$6,969.95
500 <u>Other Purchased Services</u>				
580 Travel			184.84	184.84
Total Other Purchased Services			\$184.84	\$184.84
600 <u>Supplies</u>				
610 General Supplies			1,307.20	1,307.20
Total Supplies			\$1,307.20	\$1,307.20
Total 1190 Federally-Funded Regular Programs			\$112,458.99	\$112,458.99

LEA : 124158503 Unionville-Chadds Ford SD

Printed 12/11/2020 3:43:55 PM

General Fund (10)

1200 Special Programs – Elementary / Secondary	Elementary	Secondary	Federal	Total
100 Personnel Services – Salaries				
100 Personnel Services – Salaries	3,748,183.53	2,464,265.80	446,199.75	6,658,649.08
Total Personnel Services – Salaries	\$3,748,183.53	\$2,464,265.80	\$446,199.75	\$6,658,649.08
200 Personnel Services – Employee Benefits				
220 Social Security Contributions	272,095.95	186,880.61	11,592.57	470,569.13
230 PSERS Retirement Contributions	1,260,898.47	839,250.90	59,671.31	2,159,820.68
250 Unemployment Compensation	2,791.73	1,914.59		4,706.32
260 Workers' Compensation	15,638.00	9,609.79		25,247.79
270 Group Insurance – Self-Insurance	855,802.09	577,029.59		1,432,831.68
Total Personnel Services – Employee Benefits	\$2,407,226.24	\$1,614,685.48	\$71,263.88	\$4,093,175.60
300 Purchased Professional and Technical Services				
322 Professional Educational Services – lus	433,944.06	1,109,796.82	440,206.06	1,983,946.94
329 Professional Educational Services – Other	391,550.66	222,922.40	292,318.46	906,791.52
330 Other Professional Services	17,090.00	556,543.97		573,633.97
390 Other Purchased Professional and Technical Services	59.54	161.79		221.33
Total Purchased Professional and Technical Services	\$842,644.26	\$1,889,424.98	\$732,524.52	\$3,464,593.76
400 Purchased Property Services				
430 Repairs and Maintenance Services	1,661.37	1,661.37		3,322.74
Total Purchased Property Services	\$1,661.37	\$1,661.37		\$3,322.74
500 Other Purchased Services				
561 Tuition To Other School Districts Within the State		13,938.59		13,938.59
562 Tuition To Pennsylvania Charter Schools	51,005.04	353,231.42		404,236.46
567 Tuition To Approved Private Schools (APS) and PA Chartered Schools for the Deaf and Blind		56,997.42		56,997.42
580 Travel	3,091.59	2,936.44		6,028.03
Total Other Purchased Services	\$54,096.63	\$427,103.87		\$481,200.50
600 Supplies				
610 General Supplies	48,976.68	36,573.59		85,550.27
630 Food	596.77	78.45		675.22
640 Books and Periodicals	2,914.37	322.92		3,237.29
650 Supplies & Fees – Technology Related	9,897.99	15,682.51		25,580.50
Total Supplies	\$62,385.81	\$52,657.47		\$115,043.28
Total 1200 Special Programs – Elementary / Secondary	\$7,116,197.84	\$6,449,798.97	\$1,249,988.15	\$14,815,984.96

LEA : 124158503 Unionville-Chadds Ford SD

Printed 12/11/2020 3:43:55 PM

General Fund (10)

1210 Life Skills Support

	Elementary	Secondary	Federal	Total
100 <u>Personnel Services – Salaries</u>				
100 Personnel Services – Salaries		1,165.00	56,264.50	57,429.50
Total Personnel Services – Salaries		\$1,165.00	\$56,264.50	\$57,429.50
200 <u>Personnel Services – Employee Benefits</u>				
220 Social Security Contributions		4,130.39		4,130.39
230 PSERS Retirement Contributions		19,508.06		19,508.06
250 Unemployment Compensation		29.42		29.42
270 Group Insurance – Self-Insurance		16,791.15		16,791.15
Total Personnel Services – Employee Benefits		\$40,459.02		\$40,459.02
300 <u>Purchased Professional and Technical Services</u>				
322 Professional Educational Services – Ius			440,206.06	440,206.06
329 Professional Educational Services – Other			111,450.91	111,450.91
Total Purchased Professional and Technical Services			\$551,656.97	\$551,656.97
500 <u>Other Purchased Services</u>				
580 Travel		(2.88)		(2.88)
Total Other Purchased Services		(\$2.88)		(\$2.88)
600 <u>Supplies</u>				
610 General Supplies	7,402.60	1,173.34		8,575.94
Total Supplies	\$7,402.60	\$1,173.34		\$8,575.94
Total 1210 Life Skills Support	\$7,402.60	\$42,794.48	\$607,921.47	\$658,118.55

LEA : 124158503 Unionville-Chadds Ford SD

Printed 12/11/2020 3:43:55 PM

General Fund (10)

1220 Sensory Support	Elementary	Secondary	Federal	Total
100 <u>Personnel Services – Salaries</u>				
100 Personnel Services – Salaries	346,857.39	111,734.96		458,592.35
Total Personnel Services – Salaries	\$346,857.39	\$111,734.96		\$458,592.35
200 <u>Personnel Services – Employee Benefits</u>				
220 Social Security Contributions	24,339.78	8,113.26		32,453.04
230 PSERS Retirement Contributions	97,191.93	32,397.31		129,589.24
250 Unemployment Compensation	110.30	36.76		147.06
260 Workers' Compensation	1,716.11	572.03		2,288.14
270 Group Insurance – Self-Insurance	54,549.38	18,183.12		72,732.50
Total Personnel Services – Employee Benefits	\$177,907.50	\$59,302.48		\$237,209.98
300 <u>Purchased Professional and Technical Services</u>				
322 Professional Educational Services – lus	43,147.62	43,923.20		87,070.82
329 Professional Educational Services – Other	5,672.63	108.72		5,781.35
Total Purchased Professional and Technical Services	\$48,820.25	\$44,031.92		\$92,852.17
500 <u>Other Purchased Services</u>				
580 Travel	496.82	60.00		556.82
Total Other Purchased Services	\$496.82	\$60.00		\$556.82
600 <u>Supplies</u>				
610 General Supplies	2,782.89	2,197.77		4,980.66
Total Supplies	\$2,782.89	\$2,197.77		\$4,980.66
Total 1220 Sensory Support	\$576,864.85	\$217,327.13		\$794,191.98

LEA : 124158503 Unionville-Chadds Ford SD

Printed 12/11/2020 3:43:55 PM

General Fund (10)

1230 Emotional Support

	Elementary	Secondary	Federal	Total
100 Personnel Services – Salaries				
100 Personnel Services – Salaries	327,333.59	347,840.55	298,764.25	973,938.39
Total Personnel Services – Salaries	\$327,333.59	\$347,840.55	\$298,764.25	\$973,938.39
200 Personnel Services – Employee Benefits				
220 Social Security Contributions	29,105.36	31,530.80	8,105.28	68,741.44
230 PSERS Retirement Contributions	142,059.62	153,897.92	44,040.04	339,997.58
250 Unemployment Compensation	352.98	382.40		735.38
260 Workers' Compensation	891.79	966.10		1,857.89
270 Group Insurance – Self-Insurance	90,704.32	98,263.02		188,967.34
Total Personnel Services – Employee Benefits	\$263,114.07	\$285,040.24	\$52,145.32	\$600,299.63
300 Purchased Professional and Technical Services				
322 Professional Educational Services – lus	218,717.72	693,327.94		912,045.66
329 Professional Educational Services – Other	145,774.39	62,154.15	180,867.55	388,796.09
Total Purchased Professional and Technical Services	\$364,492.11	\$755,482.09	\$180,867.55	\$1,300,841.75
500 Other Purchased Services				
561 Tuition To Other School Districts Within the State		13,938.59		13,938.59
567 Tuition To Approved Private Schools (APS) and PA Chartered Schools for the Deaf and Blind		14,370.00		14,370.00
Total Other Purchased Services		\$28,308.59		\$28,308.59
600 Supplies				
610 General Supplies	8,550.28	2,290.01		10,840.29
640 Books and Periodicals	2,891.90			2,891.90
Total Supplies	\$11,442.18	\$2,290.01		\$13,732.19
Total 1230 Emotional Support	\$966,381.95	\$1,418,961.48	\$531,777.12	\$2,917,120.55

LEA : 124158503 Unionville-Chadds Ford SD

Printed 12/11/2020 3:43:55 PM

General Fund (10)

1240 Academic Support

	Elementary	Secondary	Federal	Total
100 Personnel Services – Salaries				
100 Personnel Services – Salaries	2,887,361.34	1,789,573.00	91,171.00	4,768,105.34
Total Personnel Services – Salaries	\$2,887,361.34	\$1,789,573.00	\$91,171.00	\$4,768,105.34
200 Personnel Services – Employee Benefits				
220 Social Security Contributions	205,622.39	127,811.92	3,487.29	336,921.60
230 PSERS Retirement Contributions	998,097.91	620,767.37	15,631.27	1,634,496.55
250 Unemployment Compensation	2,271.09	1,435.12		3,706.21
260 Workers' Compensation	12,941.11	8,023.75		20,964.86
270 Group Insurance – Self-Insurance	696,902.02	436,444.26		1,133,346.28
Total Personnel Services – Employee Benefits	\$1,915,834.52	\$1,194,482.42	\$19,118.56	\$3,129,435.50
300 Purchased Professional and Technical Services				
322 Professional Educational Services – lus	(23,865.02)	302,207.70		278,342.68
329 Professional Educational Services – Other	189,203.30	96,420.22		285,623.52
Total Purchased Professional and Technical Services	\$165,338.28	\$398,627.92		\$563,966.20
600 Supplies				
610 General Supplies	5,921.49	2,595.20		8,516.69
640 Books and Periodicals	22.47	322.92		345.39
Total Supplies	\$5,943.96	\$2,918.12		\$8,862.08
Total 1240 Academic Support	\$4,974,478.10	\$3,385,601.46	\$110,289.56	\$8,470,369.12

LEA : 124158503 Unionville-Chadds Ford SD

Printed 12/11/2020 3:43:55 PM

General Fund (10)

1241 Learning Support – Public	Elementary	Secondary	Federal	Total
100 <u>Personnel Services – Salaries</u>				
100 Personnel Services – Salaries	2,466,813.91	1,579,512.67	91,171.00	4,137,497.58
Total Personnel Services – Salaries	\$2,466,813.91	\$1,579,512.67	\$91,171.00	\$4,137,497.58
200 <u>Personnel Services – Employee Benefits</u>				
220 Social Security Contributions	176,219.93	112,665.20	3,487.29	292,372.42
230 PSERS Retirement Contributions	858,308.74	548,754.77	15,631.27	1,422,694.78
250 Unemployment Compensation	2,135.20	1,365.12		3,500.32
260 Workers' Compensation	10,927.55	6,986.46		17,914.01
270 Group Insurance – Self-Insurance	623,499.59	398,630.88		1,022,130.47
Total Personnel Services – Employee Benefits	\$1,671,091.01	\$1,068,402.43	\$19,118.56	\$2,758,612.00
300 <u>Purchased Professional and Technical Services</u>				
322 Professional Educational Services – lus	(23,865.02)	302,207.70		278,342.68
329 Professional Educational Services – Other	189,203.30	96,420.22		285,623.52
Total Purchased Professional and Technical Services	\$165,338.28	\$398,627.92		\$563,966.20
600 <u>Supplies</u>				
610 General Supplies	4,183.21	2,595.20		6,778.41
640 Books and Periodicals	22.47	322.92		345.39
Total Supplies	\$4,205.68	\$2,918.12		\$7,123.80
Total 1241 Learning Support – Public	\$4,307,448.88	\$3,049,461.14	\$110,289.56	\$7,467,199.58

LEA : 124158503 Unionville-Chadds Ford SD

Printed 12/11/2020 3:43:55 PM

General Fund (10)

1243 Gifted Support

	Elementary	Secondary	Federal	Total
100 Personnel Services – Salaries				
100 Personnel Services – Salaries	420,547.43	210,060.33		630,607.76
Total Personnel Services – Salaries	\$420,547.43	\$210,060.33		\$630,607.76
200 Personnel Services – Employee Benefits				
220 Social Security Contributions	29,402.46	15,146.72		44,549.18
230 PSERS Retirement Contributions	139,789.17	72,012.60		211,801.77
250 Unemployment Compensation	135.89	70.00		205.89
260 Workers' Compensation	2,013.56	1,037.29		3,050.85
270 Group Insurance – Self-Insurance	73,402.43	37,813.38		111,215.81
Total Personnel Services – Employee Benefits	\$244,743.51	\$126,079.99		\$370,823.50
600 Supplies				
610 General Supplies	1,738.28			1,738.28
Total Supplies	\$1,738.28			\$1,738.28
Total 1243 Gifted Support	\$667,029.22	\$336,140.32		\$1,003,169.54

LEA : 124158503 Unionville-Chadds Ford SD

Printed 12/11/2020 3:43:55 PM

General Fund (10)

1270 Multi-Handicapped Support	<u>Elementary</u>	<u>Secondary</u>	<u>Federal</u>	<u>Total</u>
300 <u>Purchased Professional and Technical Services</u>				
322 Professional Educational Services – Ius	84,529.19	63,716.60		148,245.79
329 Professional Educational Services – Other	1,090.83	46,680.00		47,770.83
Total Purchased Professional and Technical Services	\$85,620.02	\$110,396.60		\$196,016.62
500 <u>Other Purchased Services</u>				
580 Travel	336.86	336.85		673.71
Total Other Purchased Services	\$336.86	\$336.85		\$673.71
600 <u>Supplies</u>				
610 General Supplies	156.49	156.49		312.98
Total Supplies	\$156.49	\$156.49		\$312.98
Total 1270 Multi-Handicapped Support	\$86,113.37	\$110,889.94		\$197,003.31

LEA : 124158503 Unionville-Chadds Ford SD

Printed 12/11/2020 3:43:55 PM

General Fund (10)

1280 Early Intervention Support

	<u>Elementary</u>	<u>Secondary</u>	<u>Federal</u>	<u>Total</u>
300 <u>Purchased Professional and Technical Services</u>				
322 Professional Educational Services – lus	104,599.47			104,599.47
Total Purchased Professional and Technical Services	\$104,599.47			\$104,599.47
Total 1280 Early Intervention Support	\$104,599.47			\$104,599.47

LEA : 124158503 Unionville-Chadds Ford SD

Printed 12/11/2020 3:43:55 PM

General Fund (10)				
1290 Special Programs - Other Support	<u>Elementary</u>	<u>Secondary</u>	<u>Federal</u>	<u>Total</u>
100 <u>Personnel Services – Salaries</u>				
100 Personnel Services – Salaries	186,631.21	213,952.29		400,583.50
Total Personnel Services – Salaries	\$186,631.21	\$213,952.29		\$400,583.50
200 <u>Personnel Services – Employee Benefits</u>				
220 Social Security Contributions	13,028.42	15,294.24		28,322.66
230 PSERS Retirement Contributions	23,549.01	12,680.24		36,229.25
250 Unemployment Compensation	57.36	30.89		88.25
260 Workers' Compensation	88.99	47.91		136.90
270 Group Insurance – Self-Insurance	13,646.37	7,348.04		20,994.41
Total Personnel Services – Employee Benefits	\$50,370.15	\$35,401.32		\$85,771.47
300 <u>Purchased Professional and Technical Services</u>				
322 Professional Educational Services – lus	6,815.08	6,621.38		13,436.46
329 Professional Educational Services – Other	49,809.51	17,559.31		67,368.82
330 Other Professional Services	17,090.00	556,543.97		573,633.97
390 Other Purchased Professional and Technical Services	59.54	161.79		221.33
Total Purchased Professional and Technical Services	\$73,774.13	\$580,886.45		\$654,660.58
400 <u>Purchased Property Services</u>				
430 Repairs and Maintenance Services	1,661.37	1,661.37		3,322.74
Total Purchased Property Services	\$1,661.37	\$1,661.37		\$3,322.74
500 <u>Other Purchased Services</u>				
562 Tuition To Pennsylvania Charter Schools	51,005.04	353,231.42		404,236.46
567 Tuition To Approved Private Schools (APS) and PA Chartered Schools for the Deaf and Blind		42,627.42		42,627.42
580 Travel	2,257.91	2,542.47		4,800.38
Total Other Purchased Services	\$53,262.95	\$398,401.31		\$451,664.26
600 <u>Supplies</u>				
610 General Supplies	24,162.93	28,160.78		52,323.71
630 Food	596.77	78.45		675.22
650 Supplies & Fees – Technology Related	9,897.99	15,682.51		25,580.50
Total Supplies	\$34,657.69	\$43,921.74		\$78,579.43
Total 1290 Special Programs - Other Support	\$400,357.50	\$1,274,224.48		\$1,674,581.98

LEA : 124158503 Unionville-Chadds Ford SD

Printed 12/11/2020 3:43:55 PM

General Fund (10)

1300 Vocational Education

	<u>Elementary</u>	<u>Secondary</u>	<u>Federal</u>	<u>Total</u>
500 <u>Other Purchased Services</u>				
561 Tuition To Other School Districts Within the State		10,216.00		10,216.00
564 Tuition To Career and Technology Centers		704,443.97		704,443.97
Total Other Purchased Services		\$714,659.97		\$714,659.97
Total 1300 Vocational Education		\$714,659.97		\$714,659.97

LEA : 124158503 Unionville-Chadds Ford SD

Printed 12/11/2020 3:43:55 PM

General Fund (10)

1400 Other Instructional Programs – Elementary / Secondary	Elementary	Secondary	Federal	Total
100 <u>Personnel Services – Salaries</u>				
100 Personnel Services – Salaries	1,904.20	7,329.38		9,233.58
Total Personnel Services – Salaries	\$1,904.20	\$7,329.38		\$9,233.58
200 <u>Personnel Services – Employee Benefits</u>				
220 Social Security Contributions	118.01	472.05		590.06
230 PSERS Retirement Contributions	836.06	3,344.24		4,180.30
260 Workers’ Compensation	31.29	125.16		156.45
Total Personnel Services – Employee Benefits	\$985.36	\$3,941.45		\$4,926.81
300 <u>Purchased Professional and Technical Services</u>				
329 Professional Educational Services – Other		19,925.08		19,925.08
Total Purchased Professional and Technical Services		\$19,925.08		\$19,925.08
500 <u>Other Purchased Services</u>				
561 Tuition To Other School Districts Within the State		56,889.19		56,889.19
569 Tuition – Other		29,075.00		29,075.00
580 Travel	146.80	553.71		700.51
596 Direct Payments To Intermediate Units		16,759.04		16,759.04
599 Other Miscellaneous Purchased Services		221,343.42		221,343.42
Total Other Purchased Services	\$146.80	\$324,620.36		\$324,767.16
Total 1400 Other Instructional Programs – Elementary / Secondary	\$3,036.36	\$355,816.27		\$358,852.63

LEA : 124158503 Unionville-Chadds Ford SD

Printed 12/11/2020 3:43:55 PM

General Fund (10)

1410 Drivers' Education

300 Purchased Professional and Technical Services

	<u>Elementary</u>	<u>Secondary</u>	<u>Federal</u>	<u>Total</u>
329 Professional Educational Services – Other		19,413.10		19,413.10
Total Purchased Professional and Technical Services		\$19,413.10		\$19,413.10
Total 1410 Drivers' Education		\$19,413.10		\$19,413.10

LEA : 124158503 Unionville-Chadds Ford SD

Printed 12/11/2020 3:43:55 PM

General Fund (10)				
1430 Homebound Instruction	<u>Elementary</u>	<u>Secondary</u>	<u>Federal</u>	<u>Total</u>
100 <u>Personnel Services – Salaries</u>				
100 Personnel Services – Salaries	1,904.20	7,329.38		9,233.58
Total Personnel Services – Salaries	\$1,904.20	\$7,329.38		\$9,233.58
200 <u>Personnel Services – Employee Benefits</u>				
220 Social Security Contributions	118.01	472.05		590.06
230 PSERS Retirement Contributions	836.06	3,344.24		4,180.30
260 Workers’ Compensation	31.29	125.16		156.45
Total Personnel Services – Employee Benefits	\$985.36	\$3,941.45		\$4,926.81
300 <u>Purchased Professional and Technical Services</u>				
329 Professional Educational Services – Other		511.98		511.98
Total Purchased Professional and Technical Services		\$511.98		\$511.98
500 <u>Other Purchased Services</u>				
580 Travel	146.80	553.71		700.51
Total Other Purchased Services	\$146.80	\$553.71		\$700.51
Total 1430 Homebound Instruction	\$3,036.36	\$12,336.52		\$15,372.88

LEA : 124158503 Unionville-Chadds Ford SD

Printed 12/11/2020 3:43:55 PM

General Fund (10)

1440 Alternative Regular Education Programs

	Elementary	Secondary	Federal	Total
500 <u>Other Purchased Services</u>				
561 Tuition To Other School Districts Within the State		56,889.19		56,889.19
569 Tuition – Other		29,075.00		29,075.00
596 Direct Payments To Intermediate Units		16,759.04		16,759.04
599 Other Miscellaneous Purchased Services		221,343.42		221,343.42
Total Other Purchased Services		\$324,066.65		\$324,066.65
Total 1440 Alternative Regular Education Programs		\$324,066.65		\$324,066.65

LEA : 124158503 Unionville-Chadds Ford SD

Printed 12/11/2020 3:43:55 PM

General Fund (10)				
1441 Adjudicated / Court-Placed Programs	<u>Elementary</u>	<u>Secondary</u>	<u>Federal</u>	<u>Total</u>
500 <u>Other Purchased Services</u>				
561 Tuition To Other School Districts Within the State		56,889.19		56,889.19
599 Other Miscellaneous Purchased Services		221,343.42		221,343.42
Total Other Purchased Services		\$278,232.61		\$278,232.61
Total 1441 Adjudicated / Court-Placed Programs		\$278,232.61		\$278,232.61

LEA : 124158503 Unionville-Chadds Ford SD

Printed 12/11/2020 3:43:55 PM

General Fund (10)

1442 Alternative Education Programs

500 Other Purchased Services

	<u>Elementary</u>	<u>Secondary</u>	<u>Federal</u>	<u>Total</u>
569 Tuition – Other		29,075.00		29,075.00
596 Direct Payments To Intermediate Units		16,759.04		16,759.04
Total Other Purchased Services		\$45,834.04		\$45,834.04
Total 1442 Alternative Education Programs		\$45,834.04		\$45,834.04

LEA : 124158503 Unionville-Chadds Ford SD

Printed 12/11/2020 3:44:02 PM

General Fund (10)

2000 Support Services

Total

100	<u>Personnel Services – Salaries</u>	
100	Personnel Services – Salaries	13,002,789.96
Total Personnel Services – Salaries		\$13,002,789.96
200	<u>Personnel Services – Employee Benefits</u>	
220	Social Security Contributions	918,421.12
230	PSERS Retirement Contributions	4,418,575.07
240	Tuition Reimbursement	312,716.00
250	Unemployment Compensation	6,882.99
260	Workers' Compensation	61,212.71
270	Group Insurance – Self-Insurance	2,610,557.30
Total Personnel Services – Employee Benefits		\$8,328,365.19
300	<u>Purchased Professional and Technical Services</u>	
322	Professional Educational Services – Ius	6,725.33
329	Professional Educational Services – Other	412,433.86
330	Other Professional Services	205,925.31
340	Technical Services	23,775.00
350	Security / Safety Services	6,848.75
390	Other Purchased Professional and Technical Services	9,073.49
Total Purchased Professional and Technical Services		\$664,781.74
400	<u>Purchased Property Services</u>	
410	Cleaning Services	29,370.54
420	Utility Services	123,322.59
430	Repairs and Maintenance Services	451,525.16
440	Rentals	6,111.97
Total Purchased Property Services		\$610,330.26
500	<u>Other Purchased Services</u>	
513	Contracted Carriers	1,380.00
516	Student Transportation Services From the IU	1,693.27
520	Insurance – General	5,751.00
521	Fire Insurance	143,651.00
522	Automotive Liability Insurance	105,631.00
523	General Property and Liability Insurance	117,742.00
529	Other Insurance	155,290.55
530	Communications	52,541.26
549	Other Advertising/Public Relations	5,960.18
550	Printing and Binding	4,538.60
580	Travel	47,284.78
591	Services Purchased Locally	26,789.37
595	IU Payments By Withholding	40,629.32
Total Other Purchased Services		\$708,882.33
600	<u>Supplies</u>	
610	General Supplies	828,242.14
620	Energy	1,135,115.05
630	Food	13,275.65

LEA : 124158503 Unionville-Chadds Ford SD

Printed 12/11/2020 3:44:02 PM

General Fund (10)

2000 Support Services

Total

600 <u>Supplies</u>	
640 Books and Periodicals	73,412.28
650 Supplies & Fees – Technology Related	10,850.00
Total Supplies	\$2,060,895.12
700 <u>Property</u>	
752 Capital Equipment – Original and Additional	486,858.48
762 Capitalized Equipment - Replacement	477,162.46
766 Capitalized Technology Equipment – Replacement	745,128.78
Total Property	\$1,709,149.72
800 <u>Other Objects</u>	
810 Dues and Fees	37,581.26
Total Other Objects	\$37,581.26
Total 2000 Support Services	\$27,122,775.58

LEA : 124158503 Unionville-Chadds Ford SD

Printed 12/11/2020 3:44:02 PM

General Fund (10)

2100 Support Services – Students	Elementary	Secondary	Federal	Total
100 <u>Personnel Services – Salaries</u>				
100 Personnel Services – Salaries	1,102,217.12	1,385,486.61		2,487,703.73
Total Personnel Services – Salaries	\$1,102,217.12	\$1,385,486.61		\$2,487,703.73
200 <u>Personnel Services – Employee Benefits</u>				
220 Social Security Contributions	77,887.30	97,949.19		175,836.49
230 PSERS Retirement Contributions	366,117.47	461,581.55		827,699.02
250 Unemployment Compensation	503.59	643.58		1,147.17
260 Workers' Compensation	4,451.52	5,542.00		9,993.52
270 Group Insurance – Self-Insurance	179,617.56	222,162.20		401,779.76
Total Personnel Services – Employee Benefits	\$628,577.44	\$787,878.52		\$1,416,455.96
300 <u>Purchased Professional and Technical Services</u>				
322 Professional Educational Services – lus	1,656.44	5,068.89		6,725.33
329 Professional Educational Services – Other	36,566.28	19,848.99		56,415.27
330 Other Professional Services			8,887.50	8,887.50
Total Purchased Professional and Technical Services	\$38,222.72	\$24,917.88	\$8,887.50	\$72,028.10
500 <u>Other Purchased Services</u>				
549 Other Advertising/Public Relations	1,922.83	1,922.82		3,845.65
550 Printing and Binding	232.95	232.95		465.90
580 Travel	1,433.32	4,220.00	1,428.34	7,081.66
Total Other Purchased Services	\$3,589.10	\$6,375.77	\$1,428.34	\$11,393.21
600 <u>Supplies</u>				
610 General Supplies	16,429.97	5,355.82		21,785.79
630 Food	213.75	213.75		427.50
640 Books and Periodicals	434.40	1,349.37		1,783.77
Total Supplies	\$17,078.12	\$6,918.94		\$23,997.06
700 <u>Property</u>				
752 Capital Equipment – Original and Additional	535.00	535.00		1,070.00
Total Property	\$535.00	\$535.00		\$1,070.00
Total 2100 Support Services – Students	\$1,790,219.50	\$2,212,112.72	\$10,315.84	\$4,012,648.06

LEA : 124158503 Unionville-Chadds Ford SD

Printed 12/11/2020 3:44:02 PM

General Fund (10)

2110 Supervision of Student Services	Elementary	Secondary	Federal	Total
100 <u>Personnel Services – Salaries</u>				
100 Personnel Services – Salaries	147,369.81	147,369.58		294,739.39
Total Personnel Services – Salaries	\$147,369.81	\$147,369.58		\$294,739.39
200 <u>Personnel Services – Employee Benefits</u>				
220 Social Security Contributions	10,473.48	10,473.48		20,946.96
230 PSERS Retirement Contributions	49,466.86	49,466.86		98,933.72
250 Unemployment Compensation	58.84	58.83		117.67
260 Workers' Compensation	664.93	664.93		1,329.86
270 Group Insurance – Self-Insurance	30,108.60	30,108.60		60,217.20
Total Personnel Services – Employee Benefits	\$90,772.71	\$90,772.70		\$181,545.41
300 <u>Purchased Professional and Technical Services</u>				
329 Professional Educational Services – Other	35,839.22	6,454.00		42,293.22
Total Purchased Professional and Technical Services	\$35,839.22	\$6,454.00		\$42,293.22
500 <u>Other Purchased Services</u>				
549 Other Advertising/Public Relations	1,922.83	1,922.82		3,845.65
550 Printing and Binding	232.95	232.95		465.90
580 Travel	481.20	811.92		1,293.12
Total Other Purchased Services	\$2,636.98	\$2,967.69		\$5,604.67
600 <u>Supplies</u>				
630 Food	213.75	213.75		427.50
640 Books and Periodicals	101.82	101.82		203.64
Total Supplies	\$315.57	\$315.57		\$631.14
700 <u>Property</u>				
752 Capital Equipment – Original and Additional	535.00	535.00		1,070.00
Total Property	\$535.00	\$535.00		\$1,070.00
Total 2110 Supervision of Student Services	\$277,469.29	\$248,414.54		\$525,883.83

LEA : 124158503 Unionville-Chadds Ford SD

Printed 12/11/2020 3:44:02 PM

General Fund (10)

2119 Supervision of Student Services – All Other Supervision	Elementary	Secondary	Federal	Total
100 <u>Personnel Services – Salaries</u>				
100 Personnel Services – Salaries	147,369.81	147,369.58		294,739.39
Total Personnel Services – Salaries	\$147,369.81	\$147,369.58		\$294,739.39
200 <u>Personnel Services – Employee Benefits</u>				
220 Social Security Contributions	10,473.48	10,473.48		20,946.96
230 PSERS Retirement Contributions	49,466.86	49,466.86		98,933.72
250 Unemployment Compensation	58.84	58.83		117.67
260 Workers' Compensation	664.93	664.93		1,329.86
270 Group Insurance – Self-Insurance	30,108.60	30,108.60		60,217.20
Total Personnel Services – Employee Benefits	\$90,772.71	\$90,772.70		\$181,545.41
300 <u>Purchased Professional and Technical Services</u>				
329 Professional Educational Services – Other	35,839.22	6,454.00		42,293.22
Total Purchased Professional and Technical Services	\$35,839.22	\$6,454.00		\$42,293.22
500 <u>Other Purchased Services</u>				
549 Other Advertising/Public Relations	1,922.83	1,922.82		3,845.65
550 Printing and Binding	232.95	232.95		465.90
580 Travel	481.20	811.92		1,293.12
Total Other Purchased Services	\$2,636.98	\$2,967.69		\$5,604.67
600 <u>Supplies</u>				
630 Food	213.75	213.75		427.50
640 Books and Periodicals	101.82	101.82		203.64
Total Supplies	\$315.57	\$315.57		\$631.14
700 <u>Property</u>				
752 Capital Equipment – Original and Additional	535.00	535.00		1,070.00
Total Property	\$535.00	\$535.00		\$1,070.00
Total 2119 Supervision of Student Services – All Other Supervision	\$277,469.29	\$248,414.54		\$525,883.83

LEA : 124158503 Unionville-Chadds Ford SD

Printed 12/11/2020 3:44:02 PM

General Fund (10)

2120 Guidance Services	Elementary	Secondary	Federal	Total
100 <u>Personnel Services – Salaries</u>				
100 Personnel Services – Salaries	694,298.36	978,198.08		1,672,496.44
Total Personnel Services – Salaries	\$694,298.36	\$978,198.08		\$1,672,496.44
200 <u>Personnel Services – Employee Benefits</u>				
220 Social Security Contributions	48,974.59	69,036.48		118,011.07
230 PSERS Retirement Contributions	233,044.65	328,508.73		561,553.38
250 Unemployment Compensation	341.80	481.81		823.61
260 Workers' Compensation	2,662.07	3,752.56		6,414.63
270 Group Insurance – Self-Insurance	103,858.97	146,403.61		250,262.58
Total Personnel Services – Employee Benefits	\$388,882.08	\$548,183.19		\$937,065.27
300 <u>Purchased Professional and Technical Services</u>				
329 Professional Educational Services – Other	727.06	13,394.99		14,122.05
330 Other Professional Services			8,887.50	8,887.50
Total Purchased Professional and Technical Services	\$727.06	\$13,394.99	\$8,887.50	\$23,009.55
500 <u>Other Purchased Services</u>				
580 Travel		325.94	1,428.34	1,754.28
Total Other Purchased Services		\$325.94	\$1,428.34	\$1,754.28
600 <u>Supplies</u>				
640 Books and Periodicals	332.58	1,247.55		1,580.13
Total Supplies	\$332.58	\$1,247.55		\$1,580.13
Total 2120 Guidance Services	\$1,084,240.08	\$1,541,349.75	\$10,315.84	\$2,635,905.67

LEA : 124158503 Unionville-Chadds Ford SD

Printed 12/11/2020 3:44:02 PM

General Fund (10)				
2140 Psychological Services				
	<u>Elementary</u>	<u>Secondary</u>	<u>Federal</u>	<u>Total</u>
100 <u>Personnel Services – Salaries</u>				
100 Personnel Services – Salaries	260,548.95	259,918.95		520,467.90
Total Personnel Services – Salaries	\$260,548.95	\$259,918.95		\$520,467.90
200 <u>Personnel Services – Employee Benefits</u>				
220 Social Security Contributions	18,439.23	18,439.23		36,878.46
230 PSERS Retirement Contributions	83,605.96	83,605.96		167,211.92
250 Unemployment Compensation	102.95	102.94		205.89
260 Workers' Compensation	1,124.52	1,124.51		2,249.03
270 Group Insurance – Self-Insurance	45,649.99	45,649.99		91,299.98
Total Personnel Services – Employee Benefits	\$148,922.65	\$148,922.63		\$297,845.28
300 <u>Purchased Professional and Technical Services</u>				
322 Professional Educational Services – lus	1,656.44	5,068.89		6,725.33
Total Purchased Professional and Technical Services	\$1,656.44	\$5,068.89		\$6,725.33
500 <u>Other Purchased Services</u>				
580 Travel	952.12	3,082.14		4,034.26
Total Other Purchased Services	\$952.12	\$3,082.14		\$4,034.26
600 <u>Supplies</u>				
610 General Supplies	16,429.97	5,355.82		21,785.79
Total Supplies	\$16,429.97	\$5,355.82		\$21,785.79
Total 2140 Psychological Services	\$428,510.13	\$422,348.43		\$850,858.56

LEA : 124158503 Unionville-Chadds Ford SD

Printed 12/11/2020 3:44:02 PM

General Fund (10)

2200 Support Services – Instructional Staff	Elementary	Secondary	Federal	Total
100 <u>Personnel Services – Salaries</u>				
100 Personnel Services – Salaries	1,097,812.07	861,977.72		1,959,789.79
Total Personnel Services – Salaries	\$1,097,812.07	\$861,977.72		\$1,959,789.79
200 <u>Personnel Services – Employee Benefits</u>				
220 Social Security Contributions	77,373.95	60,994.02		138,367.97
230 PSERS Retirement Contributions	364,048.22	289,471.72		653,519.94
240 Tuition Reimbursement	99,079.86	142,578.34		241,658.20
250 Unemployment Compensation	457.11	307.69		764.80
260 Workers' Compensation	5,661.87	4,546.76		10,208.63
270 Group Insurance – Self-Insurance	171,043.23	121,733.67		292,776.90
Total Personnel Services – Employee Benefits	\$717,664.24	\$619,632.20		\$1,337,296.44
300 <u>Purchased Professional and Technical Services</u>				
329 Professional Educational Services – Other	49,490.91	48,964.96	47,087.19	145,543.06
Total Purchased Professional and Technical Services	\$49,490.91	\$48,964.96	\$47,087.19	\$145,543.06
400 <u>Purchased Property Services</u>				
430 Repairs and Maintenance Services	136,109.75	131,485.63		267,595.38
Total Purchased Property Services	\$136,109.75	\$131,485.63		\$267,595.38
500 <u>Other Purchased Services</u>				
530 Communications	1,573.66	1,093.53		2,667.19
580 Travel	7,392.05	15,135.69	4,568.81	27,096.55
591 Services Purchased Locally	6,974.00			6,974.00
Total Other Purchased Services	\$15,939.71	\$16,229.22	\$4,568.81	\$36,737.74
600 <u>Supplies</u>				
610 General Supplies	71,952.50	66,710.83		138,663.33
630 Food	1,531.63	2,405.62		3,937.25
640 Books and Periodicals	18,194.54	47,712.37		65,906.91
Total Supplies	\$91,678.67	\$116,828.82		\$208,507.49
700 <u>Property</u>				
752 Capital Equipment – Original and Additional	226,632.99	247,774.38		474,407.37
762 Capitalized Equipment - Replacement	6,118.47			6,118.47
766 Capitalized Technology Equipment – Replacement	372,564.39	372,564.39		745,128.78
Total Property	\$605,315.85	\$620,338.77		\$1,225,654.62
Total 2200 Support Services – Instructional Staff	\$2,714,011.20	\$2,415,457.32	\$51,656.00	\$5,181,124.52

LEA : 124158503 Unionville-Chadds Ford SD

Printed 12/11/2020 3:44:02 PM

General Fund (10)				
2220 Technology Support Services	<u>Elementary</u>	<u>Secondary</u>	<u>Federal</u>	<u>Total</u>
100 <u>Personnel Services – Salaries</u>				
100 Personnel Services – Salaries	423,013.95	346,291.26		769,305.21
Total Personnel Services – Salaries	\$423,013.95	\$346,291.26		\$769,305.21
200 <u>Personnel Services – Employee Benefits</u>				
220 Social Security Contributions	29,856.80	24,428.29		54,285.09
230 PSERS Retirement Contributions	124,921.24	102,208.29		227,129.53
250 Unemployment Compensation	161.78	132.37		294.15
260 Workers' Compensation	2,118.97	1,733.71		3,852.68
270 Group Insurance – Self-Insurance	67,472.38	55,204.68		122,677.06
Total Personnel Services – Employee Benefits	\$224,531.17	\$183,707.34		\$408,238.51
400 <u>Purchased Property Services</u>				
430 Repairs and Maintenance Services	4,624.12			4,624.12
Total Purchased Property Services	\$4,624.12			\$4,624.12
600 <u>Supplies</u>				
610 General Supplies	18,999.15	8,050.23		27,049.38
Total Supplies	\$18,999.15	\$8,050.23		\$27,049.38
700 <u>Property</u>				
752 Capital Equipment – Original and Additional	6,993.23	1,593.89		8,587.12
762 Capitalized Equipment - Replacement	6,118.47			6,118.47
Total Property	\$13,111.70	\$1,593.89		\$14,705.59
Total 2220 Technology Support Services	\$684,280.09	\$539,642.72		\$1,223,922.81

LEA : 124158503 Unionville-Chadds Ford SD

Printed 12/11/2020 3:44:02 PM

General Fund (10)				
2240 Computer-Assisted Instruction Support Services	<u>Elementary</u>	<u>Secondary</u>	<u>Federal</u>	<u>Total</u>
300 <u>Purchased Professional and Technical Services</u>				
329 Professional Educational Services – Other	38,570.91	38,570.91		77,141.82
Total Purchased Professional and Technical Services	\$38,570.91	\$38,570.91		\$77,141.82
400 <u>Purchased Property Services</u>				
430 Repairs and Maintenance Services	131,485.63	131,485.63		262,971.26
Total Purchased Property Services	\$131,485.63	\$131,485.63		\$262,971.26
500 <u>Other Purchased Services</u>				
530 Communications	1,093.54	1,093.53		2,187.07
580 Travel	1,262.08	1,262.07		2,524.15
Total Other Purchased Services	\$2,355.62	\$2,355.60		\$4,711.22
600 <u>Supplies</u>				
610 General Supplies	48,203.43	48,203.43		96,406.86
630 Food	316.63	316.62		633.25
Total Supplies	\$48,520.06	\$48,520.05		\$97,040.11
700 <u>Property</u>				
752 Capital Equipment – Original and Additional	136,556.44	136,556.44		273,112.88
766 Capitalized Technology Equipment– Replacement	372,564.39	372,564.39		745,128.78
Total Property	\$509,120.83	\$509,120.83		\$1,018,241.66
Total 2240 Computer-Assisted Instruction Support Services	\$730,053.05	\$730,053.02		\$1,460,106.07

LEA : 124158503 Unionville-Chadds Ford SD

Printed 12/11/2020 3:44:02 PM

General Fund (10)				
2250 School Library Services	Elementary	Secondary	Federal	Total
100 Personnel Services – Salaries				
100 Personnel Services – Salaries	373,475.01	172,123.33		545,598.34
Total Personnel Services – Salaries	\$373,475.01	\$172,123.33		\$545,598.34
200 Personnel Services – Employee Benefits				
220 Social Security Contributions	26,281.06	12,367.56		38,648.62
230 PSERS Retirement Contributions	126,022.05	59,304.50		185,326.55
250 Unemployment Compensation	240.03	112.95		352.98
260 Workers' Compensation	1,821.91	857.37		2,679.28
270 Group Insurance – Self-Insurance	76,496.51	35,998.36		112,494.87
Total Personnel Services – Employee Benefits	\$230,861.56	\$108,640.74		\$339,502.30
600 Supplies				
640 Books and Periodicals	18,194.54	47,473.37		65,667.91
Total Supplies	\$18,194.54	\$47,473.37		\$65,667.91
Total 2250 School Library Services	\$622,531.11	\$328,237.44		\$950,768.55

LEA : 124158503 Unionville-Chadds Ford SD

Printed 12/11/2020 3:44:02 PM

General Fund (10)

2260 Instruction and Curriculum Development Services	Elementary	Secondary	Federal	Total
100 <u>Personnel Services – Salaries</u>				
100 Personnel Services – Salaries	264,638.51	298,939.87		563,578.38
Total Personnel Services – Salaries	\$264,638.51	\$298,939.87		\$563,578.38
200 <u>Personnel Services – Employee Benefits</u>				
220 Social Security Contributions	18,580.84	20,952.87		39,533.71
230 PSERS Retirement Contributions	100,856.66	113,731.98		214,588.64
250 Unemployment Compensation	55.30	62.37		117.67
260 Workers' Compensation	1,580.97	1,782.79		3,363.76
270 Group Insurance – Self-Insurance	27,074.34	30,530.63		57,604.97
Total Personnel Services – Employee Benefits	\$148,148.11	\$167,060.64		\$315,208.75
300 <u>Purchased Professional and Technical Services</u>				
329 Professional Educational Services – Other	820.00	2,419.05		3,239.05
Total Purchased Professional and Technical Services	\$820.00	\$2,419.05		\$3,239.05
500 <u>Other Purchased Services</u>				
530 Communications	480.12			480.12
580 Travel	516.84	1,737.21		2,254.05
Total Other Purchased Services	\$996.96	\$1,737.21		\$2,734.17
600 <u>Supplies</u>				
610 General Supplies		166.39		166.39
630 Food	405.25	480.25		885.50
640 Books and Periodicals		239.00		239.00
Total Supplies	\$405.25	\$885.64		\$1,290.89
700 <u>Property</u>				
752 Capital Equipment – Original and Additional	83,083.32	109,624.05		192,707.37
Total Property	\$83,083.32	\$109,624.05		\$192,707.37
Total 2260 Instruction and Curriculum Development Services	\$498,092.15	\$580,666.46		\$1,078,758.61

LEA : 124158503 Unionville-Chadds Ford SD

Printed 12/11/2020 3:44:02 PM

General Fund (10)

2270 Instructional Staff Professional Development Services	Elementary	Secondary	Federal	Total
100 <u>Personnel Services – Salaries</u>				
100 Personnel Services – Salaries	20,538.00	29,148.00		49,686.00
Total Personnel Services – Salaries	\$20,538.00	\$29,148.00		\$49,686.00
200 <u>Personnel Services – Employee Benefits</u>				
220 Social Security Contributions	1,451.54	2,088.79		3,540.33
230 PSERS Retirement Contributions	5,141.76	7,399.13		12,540.89
240 Tuition Reimbursement	99,079.86	142,578.34		241,658.20
260 Workers' Compensation	80.18	115.39		195.57
Total Personnel Services – Employee Benefits	\$105,753.34	\$152,181.65		\$257,934.99
300 <u>Purchased Professional and Technical Services</u>				
329 Professional Educational Services – Other	10,100.00	7,975.00	47,087.19	65,162.19
Total Purchased Professional and Technical Services	\$10,100.00	\$7,975.00	\$47,087.19	\$65,162.19
500 <u>Other Purchased Services</u>				
580 Travel	5,613.13	12,136.41	4,568.81	22,318.35
591 Services Purchased Locally	6,974.00			6,974.00
Total Other Purchased Services	\$12,587.13	\$12,136.41	\$4,568.81	\$29,292.35
600 <u>Supplies</u>				
610 General Supplies	97.86	2,310.69		2,408.55
630 Food	597.25	1,396.25		1,993.50
Total Supplies	\$695.11	\$3,706.94		\$4,402.05
Total 2270 Instructional Staff Professional Development Services	\$149,673.58	\$205,148.00	\$51,656.00	\$406,477.58

LEA : 124158503 Unionville-Chadds Ford SD

Printed 12/11/2020 3:44:02 PM

General Fund (10)

2290 Other Instructional Staff Services	Elementary	Secondary	Federal	Total
100 Personnel Services – Salaries				
100 Personnel Services – Salaries	16,146.60	15,475.26		31,621.86
Total Personnel Services – Salaries	\$16,146.60	\$15,475.26		\$31,621.86
200 Personnel Services – Employee Benefits				
220 Social Security Contributions	1,203.71	1,156.51		2,360.22
230 PSERS Retirement Contributions	7,106.51	6,827.82		13,934.33
260 Workers’ Compensation	59.84	57.50		117.34
Total Personnel Services – Employee Benefits	\$8,370.06	\$8,041.83		\$16,411.89
600 Supplies				
610 General Supplies	4,652.06	7,980.09		12,632.15
630 Food	212.50	212.50		425.00
Total Supplies	\$4,864.56	\$8,192.59		\$13,057.15
Total 2290 Other Instructional Staff Services	\$29,381.22	\$31,709.68		\$61,090.90

LEA : 124158503 Unionville-Chadds Ford SD

Printed 12/11/2020 3:44:02 PM

General Fund (10)

2300 Support Services – Administration	Elementary	Secondary	Federal	Total
100 <u>Personnel Services – Salaries</u>				
100 Personnel Services – Salaries	998,071.23	874,807.10		2,342,065.48
Total Personnel Services – Salaries	\$998,071.23	\$874,807.10		\$2,342,065.48
200 <u>Personnel Services – Employee Benefits</u>				
220 Social Security Contributions	70,051.37	62,121.02		165,215.49
230 PSERS Retirement Contributions	341,195.93	302,569.98		795,650.07
250 Unemployment Compensation	374.15	331.79		794.19
260 Workers' Compensation	5,120.36	4,540.69		11,382.04
270 Group Insurance – Self-Insurance	164,274.10	145,677.04		356,955.50
Total Personnel Services – Employee Benefits	\$581,015.91	\$515,240.52		\$1,329,997.29
300 <u>Purchased Professional and Technical Services</u>				
329 Professional Educational Services – Other	2,768.02	2,754.66		51,923.47
330 Other Professional Services				154,012.81
390 Other Purchased Professional and Technical Services				5,313.25
Total Purchased Professional and Technical Services	\$2,768.02	\$2,754.66		\$211,249.53
400 <u>Purchased Property Services</u>				
430 Repairs and Maintenance Services		7,185.91		7,185.91
Total Purchased Property Services		\$7,185.91		\$7,185.91
500 <u>Other Purchased Services</u>				
520 Insurance – General				5,751.00
530 Communications	28,405.93	11,397.83		39,803.76
549 Other Advertising/Public Relations				2,114.53
550 Printing and Binding	938.30	1,821.40		2,759.70
580 Travel				1,817.79
Total Other Purchased Services	\$29,344.23	\$13,219.23		\$52,246.78
600 <u>Supplies</u>				
610 General Supplies	7,350.73	17,675.24		27,104.19
630 Food	1,254.00	5,123.25		9,768.15
640 Books and Periodicals				5,721.60
Total Supplies	\$8,604.73	\$22,798.49		\$42,593.94
800 <u>Other Objects</u>				
810 Dues and Fees				34,233.52
Total Other Objects				\$34,233.52
Total 2300 Support Services – Administration	\$1,619,804.12	\$1,436,005.91		\$4,019,572.45

LEA : 124158503 Unionville-Chadds Ford SD

Printed 12/11/2020 3:44:02 PM

General Fund (10)				
2310 Board Services				
	<u>Elementary</u>	<u>Secondary</u>	<u>Federal</u>	<u>Total</u>
300 <u>Purchased Professional and Technical Services</u>				
329 Professional Educational Services – Other				10,875.79
Total Purchased Professional and Technical Services				\$10,875.79
500 <u>Other Purchased Services</u>				
520 Insurance – General				1,057.00
549 Other Advertising/Public Relations				2,114.53
Total Other Purchased Services				\$3,171.53
600 <u>Supplies</u>				
630 Food				1,231.48
Total Supplies				\$1,231.48
800 <u>Other Objects</u>				
810 Dues and Fees				21,810.82
Total Other Objects				\$21,810.82
Total 2310 Board Services				\$37,089.62

LEA : 124158503 Unionville-Chadds Ford SD

Printed 12/11/2020 3:44:02 PM

General Fund (10)

2330 Tax Assessment and Collection Services	<u>Elementary</u>	<u>Secondary</u>	<u>Federal</u>	<u>Total</u>
500 <u>Other Purchased Services</u>				
520 Insurance – General				4,694.00
Total Other Purchased Services				\$4,694.00
600 <u>Supplies</u>				
610 General Supplies				2,078.22
Total Supplies				\$2,078.22
Total 2330 Tax Assessment and Collection Services				\$6,772.22

LEA : 124158503 Unionville-Chadds Ford SD

Printed 12/11/2020 3:44:02 PM

General Fund (10)

2350 Legal and Accounting Services

Elementary Secondary Federal Total

300 Purchased Professional and Technical Services

330 Other Professional Services 116,357.53

390 Other Purchased Professional and Technical Services 5,313.25

Total Purchased Professional and Technical Services \$121,670.78

Total 2350 Legal and Accounting Services \$121,670.78

LEA : 124158503 Unionville-Chadds Ford SD

Printed 12/11/2020 3:44:02 PM

General Fund (10)				
2360 Office of the Superintendent / Executive Director Services	<u>Elementary</u>	<u>Secondary</u>	<u>Federal</u>	<u>Total</u>
100 <u>Personnel Services – Salaries</u>				
100 Personnel Services – Salaries				469,187.15
Total Personnel Services – Salaries				\$469,187.15
200 <u>Personnel Services – Employee Benefits</u>				
220 Social Security Contributions				33,043.10
230 PSERS Retirement Contributions				151,884.16
250 Unemployment Compensation				88.25
260 Workers' Compensation				1,720.99
270 Group Insurance – Self-Insurance				47,004.36
Total Personnel Services – Employee Benefits				\$233,740.86
300 <u>Purchased Professional and Technical Services</u>				
329 Professional Educational Services – Other				35,525.00
330 Other Professional Services				37,655.28
Total Purchased Professional and Technical Services				\$73,180.28
500 <u>Other Purchased Services</u>				
530 Communications	5,469.49	5,469.48		10,938.97
580 Travel				1,817.79
Total Other Purchased Services	\$5,469.49	\$5,469.48		\$12,756.76
600 <u>Supplies</u>				
630 Food				2,159.42
640 Books and Periodicals				5,721.60
Total Supplies				\$7,881.02
800 <u>Other Objects</u>				
810 Dues and Fees				12,422.70
Total Other Objects				\$12,422.70
Total 2360 Office of the Superintendent / Executive Director Services	\$5,469.49	\$5,469.48		\$809,168.77

LEA : 124158503 Unionville-Chadds Ford SD

Printed 12/11/2020 3:44:02 PM

General Fund (10)				
2380 Office of the Principal Services	<u>Elementary</u>	<u>Secondary</u>	<u>Federal</u>	<u>Total</u>
100 <u>Personnel Services – Salaries</u>				
100 Personnel Services – Salaries	998,071.23	874,807.10		1,872,878.33
Total Personnel Services – Salaries	\$998,071.23	\$874,807.10		\$1,872,878.33
200 <u>Personnel Services – Employee Benefits</u>				
220 Social Security Contributions	70,051.37	62,121.02		132,172.39
230 PSERS Retirement Contributions	341,195.93	302,569.98		643,765.91
250 Unemployment Compensation	374.15	331.79		705.94
260 Workers' Compensation	5,120.36	4,540.69		9,661.05
270 Group Insurance – Self-Insurance	164,274.10	145,677.04		309,951.14
Total Personnel Services – Employee Benefits	\$581,015.91	\$515,240.52		\$1,096,256.43
300 <u>Purchased Professional and Technical Services</u>				
329 Professional Educational Services – Other	2,768.02	2,754.66		5,522.68
Total Purchased Professional and Technical Services	\$2,768.02	\$2,754.66		\$5,522.68
400 <u>Purchased Property Services</u>				
430 Repairs and Maintenance Services		7,185.91		7,185.91
Total Purchased Property Services		\$7,185.91		\$7,185.91
500 <u>Other Purchased Services</u>				
530 Communications	22,936.44	5,928.35		28,864.79
550 Printing and Binding	938.30	1,821.40		2,759.70
Total Other Purchased Services	\$23,874.74	\$7,749.75		\$31,624.49
600 <u>Supplies</u>				
610 General Supplies	7,350.73	17,675.24		25,025.97
630 Food	1,254.00	5,123.25		6,377.25
Total Supplies	\$8,604.73	\$22,798.49		\$31,403.22
Total 2380 Office of the Principal Services	\$1,614,334.63	\$1,430,536.43		\$3,044,871.06

LEA : 124158503 Unionville-Chadds Ford SD

Printed 12/11/2020 3:44:02 PM

General Fund (10)				
2400 Support Services – Pupil Health	<u>Elementary</u>	<u>Secondary</u>	<u>Federal</u>	<u>Total</u>
100 <u>Personnel Services – Salaries</u>				
100 Personnel Services – Salaries				463,238.69
Total Personnel Services – Salaries				\$463,238.69
200 <u>Personnel Services – Employee Benefits</u>				
220 Social Security Contributions				32,748.07
230 PSERS Retirement Contributions				150,490.73
250 Unemployment Compensation				294.15
260 Workers' Compensation				2,190.36
270 Group Insurance – Self-Insurance				80,441.95
Total Personnel Services – Employee Benefits				\$266,165.26
300 <u>Purchased Professional and Technical Services</u>				
329 Professional Educational Services – Other				8,628.00
330 Other Professional Services				30.00
390 Other Purchased Professional and Technical Services				3,760.24
Total Purchased Professional and Technical Services				\$12,418.24
400 <u>Purchased Property Services</u>				
410 Cleaning Services				475.00
430 Repairs and Maintenance Services				210.00
Total Purchased Property Services				\$685.00
500 <u>Other Purchased Services</u>				
580 Travel				165.00
Total Other Purchased Services				\$165.00
600 <u>Supplies</u>				
610 General Supplies				10,645.99
650 Supplies & Fees – Technology Related				10,850.00
Total Supplies				\$21,495.99
Total 2400 Support Services – Pupil Health				\$764,168.18

LEA : 124158503 Unionville-Chadds Ford SD

Printed 12/11/2020 3:44:02 PM

General Fund (10)				
2440 Nursing Services				
	<u>Elementary</u>	<u>Secondary</u>	<u>Federal</u>	<u>Total</u>
100 <u>Personnel Services – Salaries</u>				
100 Personnel Services – Salaries				463,238.69
Total Personnel Services – Salaries				\$463,238.69
200 <u>Personnel Services – Employee Benefits</u>				
220 Social Security Contributions				32,748.07
230 PSERS Retirement Contributions				150,490.73
250 Unemployment Compensation				294.15
260 Workers' Compensation				2,190.36
270 Group Insurance – Self-Insurance				80,441.95
Total Personnel Services – Employee Benefits				\$266,165.26
300 <u>Purchased Professional and Technical Services</u>				
329 Professional Educational Services – Other				8,628.00
330 Other Professional Services				30.00
390 Other Purchased Professional and Technical Services				3,760.24
Total Purchased Professional and Technical Services				\$12,418.24
400 <u>Purchased Property Services</u>				
410 Cleaning Services				475.00
430 Repairs and Maintenance Services				210.00
Total Purchased Property Services				\$685.00
500 <u>Other Purchased Services</u>				
580 Travel				165.00
Total Other Purchased Services				\$165.00
600 <u>Supplies</u>				
610 General Supplies				10,645.99
650 Supplies & Fees – Technology Related				10,850.00
Total Supplies				\$21,495.99
Total 2440 Nursing Services				\$764,168.18

LEA : 124158503 Unionville-Chadds Ford SD

Printed 12/11/2020 3:44:02 PM

General Fund (10)				
2500 Support Services – Business	<u>Elementary</u>	<u>Secondary</u>	<u>Federal</u>	<u>Total</u>
100 <u>Personnel Services – Salaries</u>				
100 Personnel Services – Salaries				604,645.38
Total Personnel Services – Salaries				\$604,645.38
200 <u>Personnel Services – Employee Benefits</u>				
220 Social Security Contributions				42,779.01
230 PSERS Retirement Contributions				217,375.50
250 Unemployment Compensation				205.89
260 Workers' Compensation				2,913.96
270 Group Insurance – Self-Insurance				67,822.93
Total Personnel Services – Employee Benefits				\$331,097.29
300 <u>Purchased Professional and Technical Services</u>				
329 Professional Educational Services – Other				128,771.03
330 Other Professional Services				411.50
Total Purchased Professional and Technical Services				\$129,182.53
400 <u>Purchased Property Services</u>				
430 Repairs and Maintenance Services				(2,421.69)
Total Purchased Property Services				(\$2,421.69)
500 <u>Other Purchased Services</u>				
530 Communications				249.97
580 Travel				4,796.47
591 Services Purchased Locally				19,815.37
Total Other Purchased Services				\$24,861.81
600 <u>Supplies</u>				
610 General Supplies				30,052.25
630 Food				78.50
Total Supplies				\$30,130.75
800 <u>Other Objects</u>				
810 Dues and Fees				2,828.98
Total Other Objects				\$2,828.98
Total 2500 Support Services – Business				\$1,120,325.05

LEA : 124158503 Unionville-Chadds Ford SD

Printed 12/11/2020 3:44:02 PM

General Fund (10)				
2510 Fiscal Services	<u>Elementary</u>	<u>Secondary</u>	<u>Federal</u>	<u>Total</u>
100 <u>Personnel Services – Salaries</u>				
100 Personnel Services – Salaries				602,172.88
Total Personnel Services – Salaries				\$602,172.88
200 <u>Personnel Services – Employee Benefits</u>				
220 Social Security Contributions				42,589.87
230 PSERS Retirement Contributions				217,375.50
250 Unemployment Compensation				205.89
260 Workers' Compensation				2,913.96
270 Group Insurance – Self-Insurance				67,822.93
Total Personnel Services – Employee Benefits				\$330,908.15
300 <u>Purchased Professional and Technical Services</u>				
329 Professional Educational Services – Other				128,771.03
330 Other Professional Services				411.50
Total Purchased Professional and Technical Services				\$129,182.53
400 <u>Purchased Property Services</u>				
430 Repairs and Maintenance Services				(2,421.69)
Total Purchased Property Services				(\$2,421.69)
500 <u>Other Purchased Services</u>				
530 Communications				249.97
580 Travel				4,796.47
Total Other Purchased Services				\$5,046.44
600 <u>Supplies</u>				
610 General Supplies				30,052.25
630 Food				78.50
Total Supplies				\$30,130.75
800 <u>Other Objects</u>				
810 Dues and Fees				2,828.98
Total Other Objects				\$2,828.98
Total 2510 Fiscal Services				\$1,097,848.04

LEA : 124158503 Unionville-Chadds Ford SD

Printed 12/11/2020 3:44:02 PM

General Fund (10)				
2511 Supervision of Fiscal Services - Head of Component	<u>Elementary</u>	<u>Secondary</u>	<u>Federal</u>	<u>Total</u>
100 <u>Personnel Services – Salaries</u>				
100 Personnel Services – Salaries				340,752.76
Total Personnel Services – Salaries				\$340,752.76
200 <u>Personnel Services – Employee Benefits</u>				
220 Social Security Contributions				22,591.23
230 PSERS Retirement Contributions				127,734.54
250 Unemployment Compensation				116.51
260 Workers' Compensation				1,648.93
270 Group Insurance – Self-Insurance				38,379.09
Total Personnel Services – Employee Benefits				\$190,470.30
300 <u>Purchased Professional and Technical Services</u>				
329 Professional Educational Services – Other				18,568.00
330 Other Professional Services				411.50
Total Purchased Professional and Technical Services				\$18,979.50
400 <u>Purchased Property Services</u>				
430 Repairs and Maintenance Services				(2,421.69)
Total Purchased Property Services				(\$2,421.69)
500 <u>Other Purchased Services</u>				
530 Communications				249.97
580 Travel				3,842.24
Total Other Purchased Services				\$4,092.21
600 <u>Supplies</u>				
610 General Supplies				7,513.06
630 Food				78.50
Total Supplies				\$7,591.56
800 <u>Other Objects</u>				
810 Dues and Fees				707.24
Total Other Objects				\$707.24
Total 2511 Supervision of Fiscal Services - Head of Component				\$560,171.88

LEA : 124158503 Unionville-Chadds Ford SD

Printed 12/11/2020 3:44:02 PM

General Fund (10)				
2513 Receiving and Disbursing Funds Services	<u>Elementary</u>	<u>Secondary</u>	<u>Federal</u>	<u>Total</u>
100 <u>Personnel Services – Salaries</u>				
100 Personnel Services – Salaries				128,903.32
Total Personnel Services – Salaries				\$128,903.32
200 <u>Personnel Services – Employee Benefits</u>				
220 Social Security Contributions				9,861.10
230 PSERS Retirement Contributions				44,200.95
250 Unemployment Compensation				44.07
260 Workers' Compensation				623.78
270 Group Insurance – Self-Insurance				14,518.42
Total Personnel Services – Employee Benefits				\$69,248.32
300 <u>Purchased Professional and Technical Services</u>				
329 Professional Educational Services – Other				9,459.94
Total Purchased Professional and Technical Services				\$9,459.94
500 <u>Other Purchased Services</u>				
580 Travel				259.84
Total Other Purchased Services				\$259.84
600 <u>Supplies</u>				
610 General Supplies				7,513.06
Total Supplies				\$7,513.06
800 <u>Other Objects</u>				
810 Dues and Fees				707.25
Total Other Objects				\$707.25
Total 2513 Receiving and Disbursing Funds Services				\$216,091.73

LEA : 124158503 Unionville-Chadds Ford SD

Printed 12/11/2020 3:44:02 PM

General Fund (10)				
2514 Payroll Services				
	<u>Elementary</u>	<u>Secondary</u>	<u>Federal</u>	<u>Total</u>
100 <u>Personnel Services – Salaries</u>				
100 Personnel Services – Salaries				57,512.00
Total Personnel Services – Salaries				\$57,512.00
200 <u>Personnel Services – Employee Benefits</u>				
220 Social Security Contributions				4,399.67
230 PSERS Retirement Contributions				19,720.86
250 Unemployment Compensation				19.66
260 Workers' Compensation				278.30
270 Group Insurance – Self-Insurance				6,477.60
Total Personnel Services – Employee Benefits				\$30,896.09
300 <u>Purchased Professional and Technical Services</u>				
329 Professional Educational Services – Other				73,843.09
Total Purchased Professional and Technical Services				\$73,843.09
500 <u>Other Purchased Services</u>				
580 Travel				694.39
Total Other Purchased Services				\$694.39
600 <u>Supplies</u>				
610 General Supplies				7,513.06
Total Supplies				\$7,513.06
800 <u>Other Objects</u>				
810 Dues and Fees				707.25
Total Other Objects				\$707.25
Total 2514 Payroll Services				\$171,165.88

LEA : 124158503 Unionville-Chadds Ford SD

Printed 12/11/2020 3:44:02 PM

General Fund (10)				
2515 Financial Accounting Services	<u>Elementary</u>	<u>Secondary</u>	<u>Federal</u>	<u>Total</u>
100 <u>Personnel Services – Salaries</u>				
100 Personnel Services – Salaries				75,004.80
Total Personnel Services – Salaries				\$75,004.80
200 <u>Personnel Services – Employee Benefits</u>				
220 Social Security Contributions				5,737.87
230 PSERS Retirement Contributions				25,719.15
250 Unemployment Compensation				25.65
260 Workers' Compensation				362.95
270 Group Insurance – Self-Insurance				8,447.82
Total Personnel Services – Employee Benefits				\$40,293.44
300 <u>Purchased Professional and Technical Services</u>				
329 Professional Educational Services – Other				26,900.00
Total Purchased Professional and Technical Services				\$26,900.00
600 <u>Supplies</u>				
610 General Supplies				7,513.07
Total Supplies				\$7,513.07
800 <u>Other Objects</u>				
810 Dues and Fees				707.24
Total Other Objects				\$707.24
Total 2515 Financial Accounting Services				\$150,418.55

LEA : 124158503 Unionville-Chadds Ford SD

Printed 12/11/2020 3:44:02 PM

General Fund (10)				
2590 Other Support Services – Business	<u>Elementary</u>	<u>Secondary</u>	<u>Federal</u>	<u>Total</u>
100 <u>Personnel Services – Salaries</u>				
100 Personnel Services – Salaries				2,472.50
Total Personnel Services – Salaries				\$2,472.50
200 <u>Personnel Services – Employee Benefits</u>				
220 Social Security Contributions				189.14
Total Personnel Services – Employee Benefits				\$189.14
500 <u>Other Purchased Services</u>				
591 Services Purchased Locally				19,815.37
Total Other Purchased Services				\$19,815.37
Total 2590 Other Support Services – Business				\$22,477.01

LEA : 124158503 Unionville-Chadds Ford SD

Printed 12/11/2020 3:44:02 PM

General Fund (10)

2600 Operation and Maintenance of Plant Services	Elementary	Secondary	Federal	Total
100 <u>Personnel Services – Salaries</u>				
100 Personnel Services – Salaries				2,568,689.27
Total Personnel Services – Salaries				\$2,568,689.27
200 <u>Personnel Services – Employee Benefits</u>				
220 Social Security Contributions				181,442.01
230 PSERS Retirement Contributions				893,190.36
250 Unemployment Compensation				1,647.21
260 Workers' Compensation				13,239.94
270 Group Insurance – Self-Insurance				645,755.61
Total Personnel Services – Employee Benefits				\$1,735,275.13
300 <u>Purchased Professional and Technical Services</u>				
329 Professional Educational Services – Other				21,153.03
330 Other Professional Services				3,484.97
340 Technical Services				22,644.00
350 Security / Safety Services				6,848.75
Total Purchased Professional and Technical Services				\$54,130.75
400 <u>Purchased Property Services</u>				
410 Cleaning Services				28,895.54
420 Utility Services				123,322.59
430 Repairs and Maintenance Services				171,853.20
Total Purchased Property Services				\$324,071.33
500 <u>Other Purchased Services</u>				
521 Fire Insurance				143,651.00
523 General Property and Liability Insurance				117,742.00
529 Other Insurance				155,290.55
530 Communications				4,487.37
580 Travel				2,701.91
Total Other Purchased Services				\$423,872.83
600 <u>Supplies</u>				
610 General Supplies	243,339.88	243,339.91		486,679.79
620 Energy				946,711.64
630 Food				52.50
Total Supplies	\$243,339.88	\$243,339.91		\$1,433,443.93
700 <u>Property</u>				
752 Capital Equipment – Original and Additional				11,381.11
762 Capitalized Equipment - Replacement				30,517.80
Total Property				\$41,898.91
Total 2600 Operation and Maintenance of Plant Services	\$243,339.88	\$243,339.91		\$6,581,382.15

LEA : 124158503 Unionville-Chadds Ford SD

Printed 12/11/2020 3:44:02 PM

General Fund (10)				
2610 Supervision of Operation and Maintenance of Plant Services	<u>Elementary</u>	<u>Secondary</u>	<u>Federal</u>	<u>Total</u>
100 <u>Personnel Services – Salaries</u>				
100 Personnel Services – Salaries				191,150.40
Total Personnel Services – Salaries				\$191,150.40
200 <u>Personnel Services – Employee Benefits</u>				
220 Social Security Contributions				13,502.11
230 PSERS Retirement Contributions				66,467.24
250 Unemployment Compensation				122.58
260 Workers' Compensation				985.26
270 Group Insurance – Self-Insurance				48,054.25
Total Personnel Services – Employee Benefits				\$129,131.44
300 <u>Purchased Professional and Technical Services</u>				
330 Other Professional Services				3,484.97
Total Purchased Professional and Technical Services				\$3,484.97
500 <u>Other Purchased Services</u>				
530 Communications				4,487.37
580 Travel				2,701.91
Total Other Purchased Services				\$7,189.28
600 <u>Supplies</u>				
630 Food				52.50
Total Supplies				\$52.50
Total 2610 Supervision of Operation and Maintenance of Plant Services				\$331,008.59

LEA : 124158503 Unionville-Chadds Ford SD

Printed 12/11/2020 3:44:02 PM

General Fund (10)				
2611 Supervision of Operation and Maintenance of Plant Services – Head of Component	<u>Elementary</u>	<u>Secondary</u>	<u>Federal</u>	<u>Total</u>
100 <u>Personnel Services – Salaries</u>				
100 Personnel Services – Salaries				191,150.40
Total Personnel Services – Salaries				\$191,150.40
200 <u>Personnel Services – Employee Benefits</u>				
220 Social Security Contributions				13,502.11
230 PSERS Retirement Contributions				66,467.24
250 Unemployment Compensation				122.58
260 Workers' Compensation				985.26
270 Group Insurance – Self-Insurance				48,054.25
Total Personnel Services – Employee Benefits				\$129,131.44
300 <u>Purchased Professional and Technical Services</u>				
330 Other Professional Services				3,484.97
Total Purchased Professional and Technical Services				\$3,484.97
500 <u>Other Purchased Services</u>				
530 Communications				4,487.37
580 Travel				2,701.91
Total Other Purchased Services				\$7,189.28
600 <u>Supplies</u>				
630 Food				52.50
Total Supplies				\$52.50
Total 2611 Supervision of Operation and Maintenance of Plant Services – Head of Component				\$331,008.59

LEA : 124158503 Unionville-Chadds Ford SD

Printed 12/11/2020 3:44:02 PM

General Fund (10)				
2620 Operation of Buildings Services	<u>Elementary</u>	<u>Secondary</u>	<u>Federal</u>	<u>Total</u>
100 <u>Personnel Services – Salaries</u>				
100 Personnel Services – Salaries				2,068,458.82
Total Personnel Services – Salaries				\$2,068,458.82
200 <u>Personnel Services – Employee Benefits</u>				
220 Social Security Contributions				146,107.72
230 PSERS Retirement Contributions				719,249.11
250 Unemployment Compensation				1,326.43
260 Workers' Compensation				10,661.57
270 Group Insurance – Self-Insurance				520,000.18
Total Personnel Services – Employee Benefits				\$1,397,345.01
300 <u>Purchased Professional and Technical Services</u>				
329 Professional Educational Services – Other				20,402.15
340 Technical Services				22,644.00
Total Purchased Professional and Technical Services				\$43,046.15
400 <u>Purchased Property Services</u>				
410 Cleaning Services				28,895.54
420 Utility Services				123,322.59
430 Repairs and Maintenance Services				171,853.20
Total Purchased Property Services				\$324,071.33
500 <u>Other Purchased Services</u>				
521 Fire Insurance				143,651.00
523 General Property and Liability Insurance				117,742.00
529 Other Insurance				155,290.55
Total Other Purchased Services				\$416,683.55
600 <u>Supplies</u>				
610 General Supplies	184,831.51	184,831.52		369,663.03
620 Energy				946,711.64
Total Supplies	\$184,831.51	\$184,831.52		\$1,316,374.67
700 <u>Property</u>				
752 Capital Equipment – Original and Additional				11,381.11
762 Capitalized Equipment - Replacement				20,113.06
Total Property				\$31,494.17
Total 2620 Operation of Buildings Services	\$184,831.51	\$184,831.52		\$5,597,473.70

LEA : 124158503 Unionville-Chadds Ford SD

Printed 12/11/2020 3:44:02 PM

General Fund (10)				
2630 Care and Upkeep of Grounds Services	<u>Elementary</u>	<u>Secondary</u>	<u>Federal</u>	<u>Total</u>
100 <u>Personnel Services – Salaries</u>				
100 Personnel Services – Salaries				309,080.05
Total Personnel Services – Salaries				\$309,080.05
200 <u>Personnel Services – Employee Benefits</u>				
220 Social Security Contributions				21,832.18
230 PSERS Retirement Contributions				107,474.01
250 Unemployment Compensation				198.20
260 Workers' Compensation				1,593.11
270 Group Insurance – Self-Insurance				77,701.18
Total Personnel Services – Employee Benefits				\$208,798.68
600 <u>Supplies</u>				
610 General Supplies	35,272.05	35,272.06		70,544.11
Total Supplies				\$70,544.11
700 <u>Property</u>				
762 Capitalized Equipment - Replacement				10,404.74
Total Property				\$10,404.74
Total 2630 Care and Upkeep of Grounds Services	\$35,272.05	\$35,272.06		\$598,827.58

LEA : 124158503 Unionville-Chadds Ford SD

Printed 12/11/2020 3:44:02 PM

General Fund (10)				
2660 Safety and Security Services	<u>Elementary</u>	<u>Secondary</u>	<u>Federal</u>	<u>Total</u>
300 <u>Purchased Professional and Technical Services</u>				
329 Professional Educational Services – Other				750.88
350 Security / Safety Services				6,848.75
Total Purchased Professional and Technical Services				\$7,599.63
600 <u>Supplies</u>				
610 General Supplies	23,236.32	23,236.33		46,472.65
Total Supplies	\$23,236.32	\$23,236.33		\$46,472.65
Total 2660 Safety and Security Services	\$23,236.32	\$23,236.33		\$54,072.28

LEA : 124158503 Unionville-Chadds Ford SD

Printed 12/11/2020 3:44:02 PM

General Fund (10)				
2700 Student Transportation Services	Elementary	Secondary	Federal	Total
100 Personnel Services – Salaries				
100 Personnel Services – Salaries				1,921,390.91
Total Personnel Services – Salaries				\$1,921,390.91
200 Personnel Services – Employee Benefits				
220 Social Security Contributions				135,712.73
230 PSERS Retirement Contributions				659,093.66
250 Unemployment Compensation				1,764.85
260 Workers' Compensation				9,367.70
270 Group Insurance – Self-Insurance				685,554.57
Total Personnel Services – Employee Benefits				\$1,491,493.51
300 Purchased Professional and Technical Services				
330 Other Professional Services				10,849.53
340 Technical Services				1,131.00
Total Purchased Professional and Technical Services				\$11,980.53
400 Purchased Property Services				
430 Repairs and Maintenance Services				7,102.36
440 Rentals				6,111.97
Total Purchased Property Services				\$13,214.33
500 Other Purchased Services				
513 Contracted Carriers				1,380.00
516 Student Transportation Services From the IU				1,693.27
522 Automotive Liability Insurance				105,631.00
530 Communications				5,097.97
580 Travel				2,456.84
Total Other Purchased Services				\$116,259.08
600 Supplies				
610 General Supplies				112,968.50
620 Energy				188,403.41
630 Food				(1,137.00)
Total Supplies				\$300,234.91
700 Property				
762 Capitalized Equipment - Replacement				440,526.19
Total Property				\$440,526.19
Total 2700 Student Transportation Services				\$4,295,099.46

LEA : 124158503 Unionville-Chadds Ford SD

Printed 12/11/2020 3:44:02 PM

General Fund (10)				
2710 Supervision of Student Transportation Services	<u>Elementary</u>	<u>Secondary</u>	<u>Federal</u>	<u>Total</u>
100 <u>Personnel Services – Salaries</u>				
100 Personnel Services – Salaries				134,497.36
Total Personnel Services – Salaries				\$134,497.36
200 <u>Personnel Services – Employee Benefits</u>				
220 Social Security Contributions				9,499.89
230 PSERS Retirement Contributions				46,136.56
250 Unemployment Compensation				123.54
260 Workers' Compensation				655.74
270 Group Insurance – Self-Insurance				47,988.82
Total Personnel Services – Employee Benefits				\$104,404.55
500 <u>Other Purchased Services</u>				
522 Automotive Liability Insurance				105,631.00
530 Communications				5,097.97
580 Travel				2,456.84
Total Other Purchased Services				\$113,185.81
600 <u>Supplies</u>				
630 Food				(1,137.00)
Total Supplies				(\$1,137.00)
Total 2710 Supervision of Student Transportation Services				\$350,950.72

LEA : 124158503 Unionville-Chadds Ford SD

Printed 12/11/2020 3:44:02 PM

General Fund (10)

2711 Supervision of Student Transportation Services – Head of Component	<u>Elementary</u>	<u>Secondary</u>	<u>Federal</u>	<u>Total</u>
100 <u>Personnel Services – Salaries</u>				
100 Personnel Services – Salaries				134,497.36
Total Personnel Services – Salaries				\$134,497.36
200 <u>Personnel Services – Employee Benefits</u>				
220 Social Security Contributions				9,499.89
230 PSERS Retirement Contributions				46,136.56
250 Unemployment Compensation				123.54
260 Workers' Compensation				655.74
270 Group Insurance – Self-Insurance				47,988.82
Total Personnel Services – Employee Benefits				\$104,404.55
500 <u>Other Purchased Services</u>				
522 Automotive Liability Insurance				105,631.00
530 Communications				5,097.97
580 Travel				2,456.84
Total Other Purchased Services				\$113,185.81
600 <u>Supplies</u>				
630 Food				(1,137.00)
Total Supplies				(\$1,137.00)
Total 2711 Supervision of Student Transportation Services – Head of Component				\$350,950.72

LEA : 124158503 Unionville-Chadds Ford SD

Printed 12/11/2020 3:44:02 PM

General Fund (10)					
2720 Vehicle Operation Services		<u>Elementary</u>	<u>Secondary</u>	<u>Federal</u>	<u>Total</u>
100 <u>Personnel Services – Salaries</u>					
100 Personnel Services – Salaries					1,095,192.82
Total Personnel Services – Salaries					\$1,095,192.82
200 <u>Personnel Services – Employee Benefits</u>					
220 Social Security Contributions					77,356.26
230 PSERS Retirement Contributions					375,683.39
250 Unemployment Compensation					1,005.96
260 Workers' Compensation					5,339.59
270 Group Insurance – Self-Insurance					390,766.10
Total Personnel Services – Employee Benefits					\$850,151.30
300 <u>Purchased Professional and Technical Services</u>					
330 Other Professional Services					10,849.53
340 Technical Services					1,131.00
Total Purchased Professional and Technical Services					\$11,980.53
500 <u>Other Purchased Services</u>					
513 Contracted Carriers					1,380.00
516 Student Transportation Services From the IU					1,693.27
Total Other Purchased Services					\$3,073.27
Total 2720 Vehicle Operation Services					\$1,960,397.92

LEA : 124158503 Unionville-Chadds Ford SD

Printed 12/11/2020 3:44:02 PM

General Fund (10)				
2730 Monitoring Services				
	<u>Elementary</u>	<u>Secondary</u>	<u>Federal</u>	<u>Total</u>
100 <u>Personnel Services – Salaries</u>				
100 Personnel Services – Salaries				38,427.82
Total Personnel Services – Salaries				\$38,427.82
200 <u>Personnel Services – Employee Benefits</u>				
220 Social Security Contributions				2,714.25
230 PSERS Retirement Contributions				13,181.87
250 Unemployment Compensation				35.30
260 Workers' Compensation				187.35
270 Group Insurance – Self-Insurance				13,711.09
Total Personnel Services – Employee Benefits				\$29,829.86
Total 2730 Monitoring Services				\$68,257.68

LEA : 124158503 Unionville-Chadds Ford SD

Printed 12/11/2020 3:44:02 PM

General Fund (10)				
2740 Vehicle Servicing and Maintenance Services	<u>Elementary</u>	<u>Secondary</u>	<u>Federal</u>	<u>Total</u>
100 <u>Personnel Services – Salaries</u>				
100 Personnel Services – Salaries				153,711.27
Total Personnel Services – Salaries				\$153,711.27
200 <u>Personnel Services – Employee Benefits</u>				
220 Social Security Contributions				10,857.02
230 PSERS Retirement Contributions				52,727.49
250 Unemployment Compensation				141.19
260 Workers' Compensation				749.42
270 Group Insurance – Self-Insurance				54,844.37
Total Personnel Services – Employee Benefits				\$119,319.49
400 <u>Purchased Property Services</u>				
430 Repairs and Maintenance Services				7,102.36
440 Rentals				6,111.97
Total Purchased Property Services				\$13,214.33
600 <u>Supplies</u>				
610 General Supplies				112,968.50
620 Energy				188,403.41
Total Supplies				\$301,371.91
700 <u>Property</u>				
762 Capitalized Equipment - Replacement				440,526.19
Total Property				\$440,526.19
Total 2740 Vehicle Servicing and Maintenance Services				\$1,028,143.19

LEA : 124158503 Unionville-Chadds Ford SD

Printed 12/11/2020 3:44:02 PM

General Fund (10)				
2750 Nonpublic Transportation	<u>Elementary</u>	<u>Secondary</u>	<u>Federal</u>	<u>Total</u>
100 <u>Personnel Services – Salaries</u>				
100 Personnel Services – Salaries				499,561.64
Total Personnel Services – Salaries				\$499,561.64
200 <u>Personnel Services – Employee Benefits</u>				
220 Social Security Contributions				35,285.31
230 PSERS Retirement Contributions				171,364.35
250 Unemployment Compensation				458.86
260 Workers' Compensation				2,435.60
270 Group Insurance – Self-Insurance				178,244.19
Total Personnel Services – Employee Benefits				\$387,788.31
Total 2750 Nonpublic Transportation				\$887,349.95

LEA : 124158503 Unionville-Chadds Ford SD

Printed 12/11/2020 3:44:02 PM

General Fund (10)				
2800 Support Services – Central	<u>Elementary</u>	<u>Secondary</u>	<u>Federal</u>	<u>Total</u>
100 <u>Personnel Services – Salaries</u>				
100 Personnel Services – Salaries				655,266.71
Total Personnel Services – Salaries				\$655,266.71
200 <u>Personnel Services – Employee Benefits</u>				
220 Social Security Contributions				46,319.35
230 PSERS Retirement Contributions				221,555.79
240 Tuition Reimbursement				71,057.80
250 Unemployment Compensation				264.73
260 Workers' Compensation				1,916.56
270 Group Insurance – Self-Insurance				79,470.08
Total Personnel Services – Employee Benefits				\$420,584.31
300 <u>Purchased Professional and Technical Services</u>				
330 Other Professional Services				28,249.00
Total Purchased Professional and Technical Services				\$28,249.00
500 <u>Other Purchased Services</u>				
530 Communications				235.00
550 Printing and Binding				1,313.00
580 Travel				1,168.56
Total Other Purchased Services				\$2,716.56
600 <u>Supplies</u>				
610 General Supplies				342.30
630 Food				148.75
Total Supplies				\$491.05
800 <u>Other Objects</u>				
810 Dues and Fees				518.76
Total Other Objects				\$518.76
Total 2800 Support Services – Central				\$1,107,826.39

LEA : 124158503 Unionville-Chadds Ford SD

Printed 12/11/2020 3:44:02 PM

General Fund (10)				
2810 Planning, Research, Development and Evaluation Services	<u>Elementary</u>	<u>Secondary</u>	<u>Federal</u>	<u>Total</u>
100 <u>Personnel Services – Salaries</u>				
100 Personnel Services – Salaries				509,056.71
Total Personnel Services – Salaries				\$509,056.71
200 <u>Personnel Services – Employee Benefits</u>				
220 Social Security Contributions				35,993.38
230 PSERS Retirement Contributions				188,113.41
250 Unemployment Compensation				264.73
260 Workers' Compensation				1,916.56
270 Group Insurance – Self-Insurance				79,470.08
Total Personnel Services – Employee Benefits				\$305,758.16
Total 2810 Planning, Research, Development and Evaluation Services				\$814,814.87

LEA : 124158503 Unionville-Chadds Ford SD

Printed 12/11/2020 3:44:02 PM

General Fund (10)				
2820 Information Services	<u>Elementary</u>	<u>Secondary</u>	<u>Federal</u>	<u>Total</u>
100 <u>Personnel Services – Salaries</u>				
100 Personnel Services – Salaries				146,210.00
Total Personnel Services – Salaries				\$146,210.00
200 <u>Personnel Services – Employee Benefits</u>				
220 Social Security Contributions				10,325.97
230 PSERS Retirement Contributions				33,442.38
Total Personnel Services – Employee Benefits				\$43,768.35
300 <u>Purchased Professional and Technical Services</u>				
330 Other Professional Services				28,249.00
Total Purchased Professional and Technical Services				\$28,249.00
500 <u>Other Purchased Services</u>				
530 Communications				235.00
550 Printing and Binding				1,313.00
580 Travel				1,168.56
Total Other Purchased Services				\$2,716.56
600 <u>Supplies</u>				
610 General Supplies				342.30
630 Food				148.75
Total Supplies				\$491.05
800 <u>Other Objects</u>				
810 Dues and Fees				518.76
Total Other Objects				\$518.76
Total 2820 Information Services				\$221,953.72

LEA : 124158503 Unionville-Chadds Ford SD

Printed 12/11/2020 3:44:02 PM

General Fund (10)				
2823 Public Information Services	<u>Elementary</u>	<u>Secondary</u>	<u>Federal</u>	<u>Total</u>
100 <u>Personnel Services – Salaries</u>				
100 Personnel Services – Salaries				146,210.00
Total Personnel Services – Salaries				\$146,210.00
200 <u>Personnel Services – Employee Benefits</u>				
220 Social Security Contributions				10,325.97
230 PSERS Retirement Contributions				33,442.38
Total Personnel Services – Employee Benefits				\$43,768.35
300 <u>Purchased Professional and Technical Services</u>				
330 Other Professional Services				28,249.00
Total Purchased Professional and Technical Services				\$28,249.00
500 <u>Other Purchased Services</u>				
530 Communications				235.00
550 Printing and Binding				1,313.00
580 Travel				1,168.56
Total Other Purchased Services				\$2,716.56
600 <u>Supplies</u>				
610 General Supplies				342.30
630 Food				148.75
Total Supplies				\$491.05
800 <u>Other Objects</u>				
810 Dues and Fees				518.76
Total Other Objects				\$518.76
Total 2823 Public Information Services				\$221,953.72

LEA : 124158503 Unionville-Chadds Ford SD

Printed 12/11/2020 3:44:02 PM

General Fund (10)

2830 Staff Services

<u>Elementary</u>	<u>Secondary</u>	<u>Federal</u>	<u>Total</u>
-------------------	------------------	----------------	--------------

200 Personnel Services – Employee Benefits

240 Tuition Reimbursement			71,057.80
---------------------------	--	--	-----------

Total Personnel Services – Employee Benefits			\$71,057.80
---	--	--	--------------------

Total 2830 Staff Services			\$71,057.80
----------------------------------	--	--	--------------------

LEA : 124158503 Unionville-Chadds Ford SD

Printed 12/11/2020 3:44:02 PM

General Fund (10)

2834 Staff Development Services – Non-Instructional, Certified Staff Only	<u>Elementary</u>	<u>Secondary</u>	<u>Federal</u>	<u>Total</u>
200 <u>Personnel Services – Employee Benefits</u>				
240 Tuition Reimbursement				70,388.80
Total Personnel Services – Employee Benefits				\$70,388.80
Total 2834 Staff Development Services – Non-Instructional, Certified Staff Only				\$70,388.80

General Fund (10)

2836 Staff Development Services – Non-Instructional, Non-Certified Staff Only	<u>Elementary</u>	<u>Secondary</u>	<u>Federal</u>	<u>Total</u>
200 <u>Personnel Services – Employee Benefits</u>				
240 Tuition Reimbursement				669.00
Total Personnel Services – Employee Benefits				\$669.00
Total 2836 Staff Development Services – Non-Instructional, Non-Certified Staff Only				\$669.00

LEA : 124158503 Unionville-Chadds Ford SD

Printed 12/11/2020 3:44:02 PM

General Fund (10)

2900 Other Support Services	<u>Elementary</u>	<u>Secondary</u>	<u>Federal</u>	<u>Total</u>
500 <u>Other Purchased Services</u>				
595 IU Payments By Withholding				40,629.32
Total Other Purchased Services				\$40,629.32
Total 2900 Other Support Services				\$40,629.32

Total

40,629.32

\$40,629.32

\$40,629.32

LEA : 124158503 Unionville-Chadds Ford SD

Printed 12/11/2020 3:44:07 PM

General Fund (10)

3000 Operation of Non-Instructional Services	Total
100 <u>Personnel Services – Salaries</u>	
100 Personnel Services – Salaries	999,979.12
Total Personnel Services – Salaries	\$999,979.12
200 <u>Personnel Services – Employee Benefits</u>	
220 Social Security Contributions	70,511.60
230 PSERS Retirement Contributions	363,685.93
250 Unemployment Compensation	88.25
260 Workers' Compensation	4,634.96
270 Group Insurance – Self-Insurance	26,984.78
Total Personnel Services – Employee Benefits	\$465,905.52
300 <u>Purchased Professional and Technical Services</u>	
329 Professional Educational Services – Other	23,876.34
330 Other Professional Services	46,714.48
Total Purchased Professional and Technical Services	\$70,590.82
400 <u>Purchased Property Services</u>	
430 Repairs and Maintenance Services	14,620.23
Total Purchased Property Services	\$14,620.23
500 <u>Other Purchased Services</u>	
580 Travel	15,389.21
591 Services Purchased Locally	700.00
Total Other Purchased Services	\$16,089.21
600 <u>Supplies</u>	
610 General Supplies	123,032.94
Total Supplies	\$123,032.94
700 <u>Property</u>	
752 Capital Equipment – Original and Additional	33,010.00
Total Property	\$33,010.00
800 <u>Other Objects</u>	
810 Dues and Fees	18,612.00
Total Other Objects	\$18,612.00
Total 3000 Operation of Non-Instructional Services	\$1,741,839.84

LEA : 124158503 Unionville-Chadds Ford SD

Printed 12/11/2020 3:44:07 PM

General Fund (10)				
3200 Student Activities	<u>Elementary</u>	<u>Secondary</u>	<u>Federal</u>	<u>Total</u>
100 <u>Personnel Services – Salaries</u>				
100 Personnel Services – Salaries				985,580.04
Total Personnel Services – Salaries				\$985,580.04
200 <u>Personnel Services – Employee Benefits</u>				
220 Social Security Contributions				69,626.53
230 PSERS Retirement Contributions				358,112.20
250 Unemployment Compensation				88.25
260 Workers' Compensation				4,556.73
270 Group Insurance – Self-Insurance				26,984.78
Total Personnel Services – Employee Benefits				\$459,368.49
300 <u>Purchased Professional and Technical Services</u>				
329 Professional Educational Services – Other				23,876.34
330 Other Professional Services				46,714.48
Total Purchased Professional and Technical Services				\$70,590.82
400 <u>Purchased Property Services</u>				
430 Repairs and Maintenance Services				14,620.23
Total Purchased Property Services				\$14,620.23
500 <u>Other Purchased Services</u>				
580 Travel				15,389.21
Total Other Purchased Services				\$15,389.21
600 <u>Supplies</u>				
610 General Supplies				123,032.94
Total Supplies				\$123,032.94
700 <u>Property</u>				
752 Capital Equipment – Original and Additional				33,010.00
Total Property				\$33,010.00
800 <u>Other Objects</u>				
810 Dues and Fees				18,612.00
Total Other Objects				\$18,612.00
Total 3200 Student Activities				\$1,720,203.73

LEA : 124158503 Unionville-Chadds Ford SD

Printed 12/11/2020 3:44:07 PM

General Fund (10)

3300 Community Services

Elementary Secondary Federal Total

100 <u>Personnel Services – Salaries</u>				
100 Personnel Services – Salaries				14,399.08
Total Personnel Services – Salaries				\$14,399.08
200 <u>Personnel Services – Employee Benefits</u>				
220 Social Security Contributions				885.07
230 PSERS Retirement Contributions				5,573.73
260 Workers’ Compensation				78.23
Total Personnel Services – Employee Benefits				\$6,537.03
500 <u>Other Purchased Services</u>				
591 Services Purchased Locally				700.00
Total Other Purchased Services				\$700.00
Total 3300 Community Services				\$21,636.11

LEA : 124158503 Unionville-Chadds Ford SD

Printed 12/11/2020 3:44:20 PM

General Fund (10)

5000 Other Expenditures and Financing Uses

Total

800	<u>Other Objects</u>	
830	Interest	3,260,385.00
880	Refunds of Prior Years' Receipts	10,835.29
Total Other Objects		\$3,271,220.29
900	<u>Other Uses of Funds</u>	
910	Redemption of Principal	5,225,000.00
932	Capital Reserve Fund Transfers Applicable To Fund 32	866,752.00
Total Other Uses of Funds		\$6,091,752.00
Total 5000 Other Expenditures and Financing Uses		\$9,362,972.29

LEA : 124158503 Unionville-Chadds Ford SD

Printed 12/11/2020 3:44:20 PM

General Fund (10)

5100 Debt Service / Other Expenditures and Financing Uses	<u>Elementary</u>	<u>Secondary</u>	<u>Federal</u>	<u>Total</u>
800 <u>Other Objects</u>				
830 Interest				3,260,385.00
880 Refunds of Prior Years' Receipts				10,835.29
Total Other Objects				\$3,271,220.29
900 <u>Other Uses of Funds</u>				
910 Redemption of Principal				5,225,000.00
Total Other Uses of Funds				\$5,225,000.00
Total 5100 Debt Service / Other Expenditures and Financing Uses				\$8,496,220.29

LEA : 124158503 Unionville-Chadds Ford SD

Printed 12/11/2020 3:44:20 PM

General Fund (10)

5110 Debt Service	<u>Elementary</u>	<u>Secondary</u>	<u>Federal</u>	<u>Total</u>
800 <u>Other Objects</u>				
830 Interest				3,260,385.00
Total Other Objects				\$3,260,385.00
900 <u>Other Uses of Funds</u>				
910 Redemption of Principal				5,225,000.00
Total Other Uses of Funds				\$5,225,000.00
Total 5110 Debt Service				\$8,485,385.00

LEA : 124158503 Unionville-Chadds Ford SD

Printed 12/11/2020 3:44:20 PM

General Fund (10)

5130 Refund of Prior Year Revenues / Receipts	<u>Elementary</u>	<u>Secondary</u>	<u>Federal</u>	<u>Total</u>
800 <u>Other Objects</u>				
880 Refunds of Prior Years' Receipts				10,835.29
Total Other Objects				\$10,835.29
Total 5130 Refund of Prior Year Revenues / Receipts				\$10,835.29

LEA : 124158503 Unionville-Chadds Ford SD

Printed 12/11/2020 3:44:20 PM

General Fund (10)

5200 Interfund Transfers – Out	<u>Elementary</u>	<u>Secondary</u>	<u>Federal</u>	<u>Total</u>
900 <u>Other Uses of Funds</u>				
932 Capital Reserve Fund Transfers Applicable To Fund 32				866,752.00
Total Other Uses of Funds				\$866,752.00
Total 5200 Interfund Transfers – Out				\$866,752.00

LEA : 124158503 Unionville-Chadds Ford SD

Printed 12/11/2020 3:44:20 PM

General Fund (10)

5230 Capital Projects Fund Transfers	<u>Elementary</u>	<u>Secondary</u>	<u>Federal</u>	<u>Total</u>
900 <u>Other Uses of Funds</u>				
932 Capital Reserve Fund Transfers Applicable To Fund 32				866,752.00
Total Other Uses of Funds				\$866,752.00
Total 5230 Capital Projects Fund Transfers				\$866,752.00

LEA : 124158503 Unionville-Chadds Ford SD

Printed 12/11/2020 3:44:13 PM

Capital Reserve Fund - § 1431 (32)

4000 Facilities Acquisition, Construction and Improvement Services

Total

300 Purchased Professional and Technical Services

330 Other Professional Services	17,322.88
---------------------------------	-----------

Total Purchased Professional and Technical Services	\$17,322.88
---	-------------

700 Property

762 Capitalized Equipment - Replacement	435,257.26
---	------------

Total Property	\$435,257.26
----------------	--------------

Total 4000 Facilities Acquisition, Construction and Improvement Services	\$452,580.14
--	--------------

LEA : 124158503 Unionville-Chadds Ford SD

Printed 12/11/2020 3:44:13 PM

Capital Reserve Fund - § 1431 (32)				
4600 Existing Building Improvement Services	<u>Elementary</u>	<u>Secondary</u>	<u>Federal</u>	<u>Total</u>
300 <u>Purchased Professional and Technical Services</u>				
330 Other Professional Services				17,322.88
Total Purchased Professional and Technical Services				\$17,322.88
700 <u>Property</u>				
762 Capitalized Equipment - Replacement				435,257.26
Total Property				\$435,257.26
Total 4600 Existing Building Improvement Services				\$452,580.14

LEA : 124158503 Unionville-Chadds Ford SD

Printed 12/11/2020 3:44:14 PM

Other Capital Projects Fund (39)

4000 Facilities Acquisition, Construction and Improvement Services

Total

400 <u>Purchased Property Services</u>	
430 Repairs and Maintenance Services	112,226.66
Total Purchased Property Services	\$112,226.66
700 <u>Property</u>	
762 Capitalized Equipment - Replacement	5,121,846.40
Total Property	\$5,121,846.40
Total 4000 Facilities Acquisition, Construction and Improvement Services	\$5,234,073.06

LEA : 124158503 Unionville-Chadds Ford SD

Printed 12/11/2020 3:44:14 PM

Other Capital Projects Fund (39)

4600 Existing Building Improvement Services	<u>Elementary</u>	<u>Secondary</u>	<u>Federal</u>	<u>Total</u>
400 <u>Purchased Property Services</u>				
430 Repairs and Maintenance Services				112,226.66
Total Purchased Property Services				\$112,226.66
700 <u>Property</u>				
762 Capitalized Equipment - Replacement				5,121,846.40
Total Property				\$5,121,846.40
Total 4600 Existing Building Improvement Services				\$5,234,073.06

	<u>General Fund(10)</u>	<u>Student Sponsored Activity Fund(21)</u>	<u>Public Purpose Trust(27)</u>	<u>Other Compt Approved (28)</u>	<u>Athletic / Activity(29)</u>
1000 <u>Instruction</u>					
1100 Regular Programs - Elementary / Secondary	35,011,714.99				
1200 Special Programs - Elementary / Secondary	14,815,984.96				
1300 Vocational Education	714,659.97				
1400 Other Instructional Programs - Elementary / Secondary	358,852.63				
Total Instruction	\$50,901,212.55				
2000 <u>Support Services</u>					
2100 Support Services - Students	4,012,648.06				
2200 Support Services - Instructional Staff	5,181,124.52				
2300 Support Services - Administration	4,019,572.45				
2400 Support Services - Pupil Health	764,168.18				
2500 Support Services - Business	1,120,325.05				
2600 Operation and Maintenance of Plant Services	6,581,382.15				
2700 Student Transportation Services	4,295,099.46				
2800 Support Services - Central	1,107,826.39				
2900 Other Support Services	40,629.32				
Total Support Services	\$27,122,775.58				
3000 <u>Operation of Non-Instructional Services</u>					
3200 Student Activities	1,720,203.73				
3300 Community Services	21,636.11				
Total Operation of Non-Instructional Services	\$1,741,839.84				
4000 <u>Facilities Acquisition, Construction and Improvement Services</u>					
4600 Existing Building Improvement Services					
Total Facilities Acquisition, Construction and Improvement Services					
5000 <u>Other Expenditures and Financing Uses</u>					
5100 Debt Service / Other Expenditures and Financing Uses	8,496,220.29				
5200 Interfund Transfers - Out	866,752.00				
Total Other Expenditures and Financing Uses	\$9,362,972.29				
TOTAL ACTUAL EXPENDITURES & OTHER FINANCING USES	\$89,128,800.26				

LEA : 124158503 Unionville-Chadds Ford SD

Printed 12/11/2020 3:44:35 PM

	Capital Reserve (690.1850)(31)	Capital Reserve (1431)(32)	Other Capital Projects Fund(39)	Debt Service(40)	Permanent(90)
1000 <u>Instruction</u>					
1100 Regular Programs - Elementary / Secondary					
1200 Special Programs - Elementary / Secondary					
1300 Vocational Education					
1400 Other Instructional Programs - Elementary / Secondary					
Total Instruction					
2000 <u>Support Services</u>					
2100 Support Services - Students					
2200 Support Services - Instructional Staff					
2300 Support Services - Administration					
2400 Support Services - Pupil Health					
2500 Support Services - Business					
2600 Operation and Maintenance of Plant Services					
2700 Student Transportation Services					
2800 Support Services - Central					
2900 Other Support Services					
Total Support Services					
3000 <u>Operation of Non-Instructional Services</u>					
3200 Student Activities					
3300 Community Services					
Total Operation of Non-Instructional Services					
4000 <u>Facilities Acquisition, Construction and Improvement Services</u>					
4600 Existing Building Improvement Services		452,580.14	5,234,073.06		
Total Facilities Acquisition, Construction and Improvement Services		\$452,580.14	\$5,234,073.06		
5000 <u>Other Expenditures and Financing Uses</u>					
5100 Debt Service / Other Expenditures and Financing Uses					
5200 Interfund Transfers - Out					
Total Other Expenditures and Financing Uses					
TOTAL ACTUAL EXPENDITURES & OTHER FINANCING USES		\$452,580.14	\$5,234,073.06		

	<u>Total</u>
1000 <u>Instruction</u>	
1100 Regular Programs - Elementary / Secondary	35,011,714.99
1200 Special Programs - Elementary / Secondary	14,815,984.96
1300 Vocational Education	714,659.97
1400 Other Instructional Programs - Elementary / Secondary	358,852.63
Total Instruction	\$50,901,212.55
2000 <u>Support Services</u>	
2100 Support Services - Students	4,012,648.06
2200 Support Services - Instructional Staff	5,181,124.52
2300 Support Services - Administration	4,019,572.45
2400 Support Services - Pupil Health	764,168.18
2500 Support Services - Business	1,120,325.05
2600 Operation and Maintenance of Plant Services	6,581,382.15
2700 Student Transportation Services	4,295,099.46
2800 Support Services - Central	1,107,826.39
2900 Other Support Services	40,629.32
Total Support Services	\$27,122,775.58
3000 <u>Operation of Non-Instructional Services</u>	
3200 Student Activities	1,720,203.73
3300 Community Services	21,636.11
Total Operation of Non-Instructional Services	\$1,741,839.84
4000 <u>Facilities Acquisition, Construction and Improvement Services</u>	
4600 Existing Building Improvement Services	5,686,653.20
Total Facilities Acquisition, Construction and Improvement Services	\$5,686,653.20
5000 <u>Other Expenditures and Financing Uses</u>	
5100 Debt Service / Other Expenditures and Financing Uses	8,496,220.29
5200 Interfund Transfers - Out	866,752.00
Total Other Expenditures and Financing Uses	\$9,362,972.29
TOTAL ACTUAL EXPENDITURES & OTHER FINANCING USES	\$94,815,453.46

LEA : 124158503 Unionville-Chadds Ford SD

Printed 12/11/2020 3:44:46 PM

PSERS Salary Data (Salary Data should relate to the General Fund only)

Amount	Description	Amount
	Total Salary Base for salaries subject to PSERS withholding	41,612,537.50
	Total Federally Funded salaries subject to PSERS withholding	528,213.98

Title I Expenditure Data

Amount	Description	Amount
	Expenditures Funded with Current Title I Funds	103,787.00
	Expenditures Funded with Carry over Title I Funds	
Total Title I Expenditure Data		\$103,787.00

Benefits for Staff Relative to Collective Bargaining Agreements

	OBJECT	COVERED	NOT COVERED	TOTAL
10 General Fund				
	211 Medical Insurance			
	212 Dental Insurance			
	215 Eye Care Insurance			
	216 Prescription Insurance			
	271 Self-Insurance Medical Benefits	2,752,349.12	2,440,762.43	5,193,111.55
	272 Self-Insurance Dental Benefits	242,972.02	190,906.59	433,878.61
	275 Self-Insurance Eye Care Benefits	50,860.76	39,962.02	90,822.78
	276 Self-Insurance Prescription Benefits	822,130.26	729,058.91	1,551,189.17
	FUND TOTAL	\$3,868,312.16	\$3,400,689.95	\$7,269,002.11
50 Enterprise Fund	No Self Insurance data to report			
	211 Medical Insurance			
	212 Dental Insurance			
	215 Eye Care Insurance			
	216 Prescription Insurance			
	271 Self-Insurance Medical Benefits			
	272 Self-Insurance Dental Benefits			
	275 Self-Insurance Eye Care Benefits			
	276 Self-Insurance Prescription Benefits			
	FUND TOTAL			
60 Internal Service Fund	No Self Insurance data to report			
	211 Medical Insurance			
	212 Dental Insurance			
	215 Eye Care Insurance			
	216 Prescription Insurance			
	271 Self-Insurance Medical Benefits			
	272 Self-Insurance Dental Benefits			
	275 Self-Insurance Eye Care Benefits			
	276 Self-Insurance Prescription Benefits			
	FUND TOTAL			
Total of All Funds		\$3,868,312.16	\$3,400,689.95	\$7,269,002.11

LEA : 124158503 Unionville-Chadds Ford SD

Printed 12/11/2020 3:44:52 PM

Function	Special Education (Prior Year)	Nonspecial Education (Prior Year)	Total (Prior Year)	Special Education (Current Year)	Nonspecial Education (Current Year)	Total (Current Year)
2120 Guidance Services	899,731.22	1,670,929.22	2,570,660.44	922,567.05	1,713,338.62	2,635,905.67
2140 Psychological Services	739,671.20	38,932.95	778,604.15	808,312.64	42,545.92	850,858.56
2150 Speech Pathology and Audiology Services						
2160 Social Work Services						
2260 Instruction and Curriculum Development Services	203,836.56	815,347.81	1,019,184.37	215,751.39	863,007.22	1,078,758.61
2350 Legal and Accounting Services	59,389.02	48,377.65	107,766.67	44,643.26	76,967.52	121,610.78
2420 Medical Services						
2440 Nursing Services	179,110.97	537,330.08	716,441.05	191,042.80	573,125.38	764,168.18
2700 Student Transportation Services	436,034.60	3,756,605.81	4,192,640.41	446,690.34	3,848,409.12	4,295,099.46
Total	\$2,517,773.57	\$6,867,523.52	\$9,385,297.09	\$2,629,007.48	\$7,117,393.78	\$9,746,401.26

LEA : 124158503 Unionville-Chadds Ford SD

Printed 12/11/2020 3:44:58 PM

(PRINCIPAL AMOUNTS ONLY)

GOVERNMENTAL FUNDS/ ACTIVITIES

	Short-Term Borrowing	General Obligation Bonds/Notes	Authority Building Obligations	Other Long-Term Debt	Other Post- Employment Benefits (OPEB)	Compensated Absences	Net Pension Liability	Total
1. Debt at Beginning of Fiscal Year		80,955,000.00			6,371,325.00	3,882,067.00	136,822,177.00	228,030,569.00
2. Additional Debt Incurred During Year					301,750.00	212,299.00		514,049.00
3. Retirements and Repayments		5,225,000.00			421,486.00		3,665,485.00	9,311,971.00
4. Debt at End of Fiscal Year		75,730,000.00			6,251,589.00	4,094,366.00	133,156,692.00	219,232,647.00
5. Accreted Interest at End Of Fiscal Year								
6. Total Debt and Accreted Interest		75,730,000.00			6,251,589.00	4,094,366.00	133,156,692.00	219,232,647.00
7. Current Portion P&I - Due within 1 year		8,482,325.00				158,378.00		8,640,703.00
8. Interest Paid during current fiscal year		3,260,385.00						3,260,385.00

(PRINCIPAL AMOUNTS ONLY)

PROPRIETARY FUNDS

	Short-Term Borrowing	General Obligation Bonds/Notes	Authority Building Obligations	Other Long-Term Debt	Other Post- Employment Benefits (OPEB)	Compensated Absences	Net Pension Liability	Total
1. Debt at Beginning of Fiscal Year							1,816,162.00	1,816,162.00
2. Additional Debt Incurred During Year							135,318.00	135,318.00
3. Retirements and Repayments								
4. Debt at End of Fiscal Year							1,951,480.00	1,951,480.00
5. Accreted Interest at End Of Fiscal Year								
6. Total Debt and Accreted Interest							1,951,480.00	1,951,480.00
7. Current Portion P&I - Due within 1 year								
8. Interest Paid during current fiscal year								

LEA : 124158503 Unionville-Chadds Ford SD

Printed 12/11/2020 3:44:58 PM

Total Principal and Interest Payments Made by Your School - All Funds

Function	Fund		Principal (910)	Principal (920)	Interest (830)	Total (Principal +Interest)	Misc Other Uses (990)
5110	10	General Fund	5,225,000.00		3,260,385.00	8,485,385.00	
5110	20	Special Revenue Funds					
5110	30	Capital Projects Funds					
5110	40	Debt Service Fund					
5110	90	Permanent Fund					
5120	10	General Fund					
5120	20	Special Revenue Funds					
5120	30	Capital Projects Funds					
5120	40	Debt Service Fund					
Total Debt Payments - Governmental Funds			\$5,225,000.00		\$3,260,385.00	\$8,485,385.00	

Function	Fund		Principal (910)	Principal (920)	Interest (830)	Total (Principal +Interest)
5110	50	Enterprise Fund				
5110	60	Internal Service Fund				
5120	50	Enterprise Fund				
5120	60	Internal Service Fund				
Total Debt Payments - Proprietary Funds						

LEA : 124158503 Unionville-Chadds Ford SD

Printed 12/11/2020 3:44:58 PM

Debt Details
Governmental Funds/ Activities

Debt Category	Debt Issue Date (MM/YYYY)	Principal Amounts Only				Current Portion Due Within One Year (Principal and Interest)	Interest Paid During Fiscal Year
		Debt at Beginning of Fiscal Year	Additions	Reductions / Repayments	Debt at End of Fiscal Year		
General Obligation Bonds/Notes – CIB	05/2019	9,145,000.00		485,000.00	8,660,000.00	788,425.00	303,125.00
General Obligation Bonds/Notes – CIB	05/2019	5,260,000.00		2,440,000.00	2,820,000.00	2,634,200.00	182,400.00
General Obligation Bonds/Notes – CIB	09/2016	57,010,000.00		5,000.00	57,005,000.00	2,446,075.00	2,441,175.00
General Obligation Bonds/Notes – CIB	02/2015	8,910,000.00		2,085,000.00	6,825,000.00	2,396,537.50	316,137.50
General Obligation Bonds/Notes – CIB	09/2010	630,000.00		210,000.00	420,000.00	217,087.50	17,547.50
Compensated Absences		3,882,067.00	212,299.00		4,094,366.00	158,378.00	
Other Post-Employment Benefits (OPEB)		6,371,325.00	301,750.00	421,486.00	6,251,589.00		
Net Pension Liability		136,822,177.00		3,665,485.00	133,156,692.00		
Totals for Debt Entered:		\$228,030,569.00	\$514,049.00	\$9,311,971.00	\$219,232,647.00	\$8,640,703.00	\$3,260,385.00

Bond Details
Proprietary Funds

Debt Category	Debt Issue Date (MM/YYYY)	Principal Amounts Only				Current Portion Due Within One Year (Principal and Interest)	Interest Paid During Fiscal Year
		Debt at Beginning of Fiscal Year	Additions	Reductions / Repayments	Debt at End of Fiscal Year		
Net Pension Liability		1,816,162.00	135,318.00		1,951,480.00		
Totals for Debt Entered:		\$1,816,162.00	\$135,318.00		\$1,951,480.00		

LEA : 124158503 Unionville-Chadds Ford SD

General Fund (10)

Section 1: Tuition/Purchased Services as Reported within Expenditure Detail	Amount
Tuition Reported in General Fund Expenditures 1000-560	1,874,936.51
Purchased Services in General Fund Expenditures 1000-594 and 1000-597	
Section 1 Total	\$1,874,936.51

Section 2: Tuition Paid to Institution Types During Fiscal Year	Tuition Paid For Nonspecial Education	Tuition Paid For Special Education	Total
1 1306 Institutions			
2 Institutionalized Children's Programs			
3 Juveniles Incarcerated in Adult Facilities			
4 Residential Treatment Facilities			
5 Other Local Education Agencies	54,450.39	13,938.59	68,388.98
6 Brick and Mortar Charter Schools	78,962.90	12,532.01	91,494.91
7 Cyber Charter Schools	505,017.59	391,704.45	896,722.04
8 Career and Technology Centers	704,443.97		704,443.97
9 Approved Private Schools		56,997.42	56,997.42
10 PA Chartered Schools for the Deaf and Blind			
11 Private Residential Rehabilitative Institutions			
12 Juvenile Detention Centers	56,889.19		56,889.19
13 Special Program Jointures			
14 Other Tuition Not Included Elsewhere In This Section			
Section 2 Total	\$1,399,764.04	\$475,172.47	\$1,874,936.51

1 .	<u>Student Transportation Services for Educational Field Trips</u>	
2 .	<u>Student Transportation Services for Student Activities</u>	34,096.17
3 .	<u>Rental of Vehicles for Student Transportation Services</u>	
4 .	<u>Capital Reserve Funds</u>	

Include only district-owned transportation expenditures paid from State or local money.
DO NOT include federal expenditures or payments to contract service providers.
Contracted transportation services should not be recorded on this schedule.

LEA : 124158503 Unionville-Chadds Ford SD

Printed 12/11/2020 3:45:21 PM

Food Service / Cafeteria Operations Fund (51)

3000 Operation of Non-Instructional Services

Total

100	<u>Personnel Services – Salaries</u>	
100	Personnel Services – Salaries	613,318.28
Total Personnel Services – Salaries		\$613,318.28
200	<u>Personnel Services – Employee Benefits</u>	
220	Social Security Contributions	46,918.85
230	PSERS Retirement Contributions	389,518.76
270	Group Insurance – Self-Insurance	184,889.71
Total Personnel Services – Employee Benefits		\$621,327.32
600	<u>Supplies</u>	
610	General Supplies	655,970.12
Total Supplies		\$655,970.12
700	<u>Property</u>	
740	Depreciation	61,212.53
Total Property		\$61,212.53
Total 3000 Operation of Non-Instructional Services		\$1,951,828.25

LEA : 124158503 Unionville-Chadds Ford SD

Printed 12/11/2020 3:45:21 PM

Food Service / Cafeteria Operations Fund (51)

3100 Food Services	<u>Elementary</u>	<u>Secondary</u>	<u>Federal</u>	<u>Total</u>
100 <u>Personnel Services – Salaries</u>				
100 Personnel Services – Salaries				613,318.28
Total Personnel Services – Salaries				\$613,318.28
200 <u>Personnel Services – Employee Benefits</u>				
220 Social Security Contributions				46,918.85
230 PSERS Retirement Contributions				389,518.76
270 Group Insurance – Self-Insurance				184,889.71
Total Personnel Services – Employee Benefits				\$621,327.32
600 <u>Supplies</u>				
610 General Supplies				655,970.12
Total Supplies				\$655,970.12
700 <u>Property</u>				
740 Depreciation				61,212.53
Total Property				\$61,212.53
Total 3100 Food Services				\$1,951,828.25

LEA : 124158503 Unionville-Chadds Ford SD

Printed 12/11/2020 3:45:17 PM

Internal Service Fund (60)

2000 Support Services

Total

200 <u>Personnel Services – Employee Benefits</u>	
270 Group Insurance – Self-Insurance	7,256,623.00
Total Personnel Services – Employee Benefits	\$7,256,623.00
300 <u>Purchased Professional and Technical Services</u>	
330 Other Professional Services	12,379.00
Total Purchased Professional and Technical Services	\$12,379.00
Total 2000 Support Services	\$7,269,002.00

LEA : 124158503 Unionville-Chadds Ford SD

Printed 12/11/2020 3:45:17 PM

Internal Service Fund (60)

2800 Support Services – Central

Elementary Secondary Federal Total

200 <u>Personnel Services – Employee Benefits</u>				
270 Group Insurance – Self-Insurance				7,256,623.00
Total Personnel Services – Employee Benefits				\$7,256,623.00
300 <u>Purchased Professional and Technical Services</u>				
330 Other Professional Services				12,379.00
Total Purchased Professional and Technical Services				\$12,379.00
Total 2800 Support Services – Central				\$7,269,002.00

LEA : 124158503 Unionville-Chadds Ford SD

Printed 12/11/2020 3:45:17 PM

Internal Service Fund (60)

2830 Staff Services

Elementary Secondary Federal Total

200 <u>Personnel Services – Employee Benefits</u>				
270 Group Insurance – Self-Insurance				7,256,623.00
Total Personnel Services – Employee Benefits				\$7,256,623.00
300 <u>Purchased Professional and Technical Services</u>				
330 Other Professional Services				12,379.00
Total Purchased Professional and Technical Services				\$12,379.00
Total 2830 Staff Services				\$7,269,002.00

LEA : 124158503 Unionville-Chadds Ford SD

Printed 12/11/2020 3:45:17 PM

Internal Service Fund (60)

2835 Health Services

	<u>Elementary</u>	<u>Secondary</u>	<u>Federal</u>	<u>Total</u>
200 <u>Personnel Services – Employee Benefits</u>				
270 Group Insurance – Self-Insurance				7,256,623.00
Total Personnel Services – Employee Benefits				\$7,256,623.00
300 <u>Purchased Professional and Technical Services</u>				
330 Other Professional Services				12,379.00
Total Purchased Professional and Technical Services				\$12,379.00
Total 2835 Health Services				\$7,269,002.00

	<u>Food Service(51)</u>	<u>Child Care Operations(52)</u>	<u>Other Enterprise(58)</u>	<u>Internal Service(60)</u>	<u>Total</u>
2000 <u>Support Services</u>					
2800 Support Services - Central				7,269,002.00	7,269,002.00
Total Support Services				\$7,269,002.00	\$7,269,002.00
3000 <u>Operation of Non-Instructional Services</u>					
3100 Food Services	1,951,828.25				1,951,828.25
Total Operation of Non-Instructional Services	\$1,951,828.25				\$1,951,828.25
TOTAL ACTUAL EXPENDITURES & OTHER FINANCING USES	\$1,951,828.25			\$7,269,002.00	\$9,220,830.25

LEA : 124158503 Unionville-Chadds Ford SD

Printed 12/11/2020 3:45:33 PM

Fund	School	School Number	Local Personnel	Local Nonpersonnel	State Personnel	State Nonpersonnel	Federal Personnel	Federal Nonpersonnel	Total	Explanation
10										
	Chadds Ford El Sch	1441	5,039,419.11	498,100.32	1,106,213.95	109,339.09	110,289.56	73,891.56	6,937,253.59	
	Charles F Patton MS	6719	13,793,700.43	1,340,446.11	3,027,885.46	294,244.27	56,264.50	202,398.61	18,714,939.38	
	Hillendale El Sch	7214	5,232,311.71	492,571.65	1,148,556.23	108,125.48		74,694.72	7,056,259.79	
	Pocopson El Sch	7736	7,178,278.01	726,668.52	1,575,719.56	159,512.60	84,663.58	112,443.67	9,837,285.94	
	Unionville El Sch	1442	4,687,330.16	535,715.68	1,028,926.13	117,596.12	103,787.00	68,269.37	6,541,624.46	
	Unionville HS	1443	17,303,052.82	1,904,994.44	3,798,231.11	418,169.51	266,245.99	271,471.15	23,962,165.02	
Total			53,234,092.24	5,498,496.72	11,685,532.44	1,206,987.07	621,250.63	803,169.08	73,049,528.18	