

### Focus on New Sprecher School Building Area

There are currently 292 students living in the proposed New Sprecher school attendance area, with 163 attending Kennedy, 92 attending Elvehjem, and 24 attending Glendale. Of the 292 students, 113 live in the current Elvehjem area and 179 live in the current Kennedy area. There are also 24 open enrolling KG-5<sup>th</sup> grade students in the area.

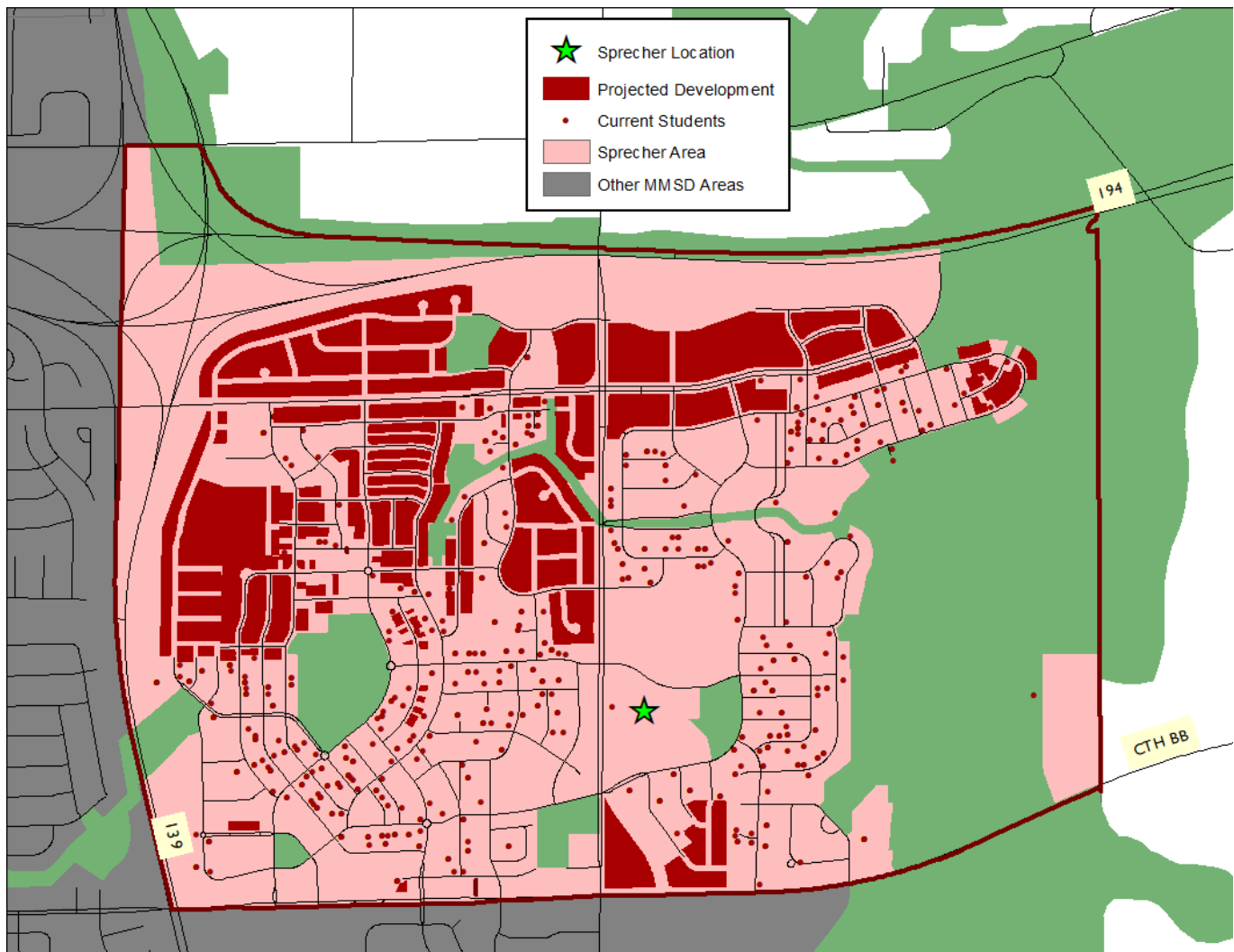
MMSD owns approximately 20 acres of land in this area (651 S Sprecher Rd [parcel 071012213014](#)) where we propose a school be built. Adjacent to the school district's property (on the west side) is Dominion Park (City of Madison park).

The area is isolated from other areas by I-94, I-39, County Highway BB (CTH BB), and a large green space. MMSD currently does not have school building east of I-39, despite large amounts of planned residential development in this area and to the south (Elvehjem's area and the Yahara Hills Neighborhood Development Plan).

There is a substantial amount of future residential development projected in the area, leading to an increase of 140 elementary students (KG-5<sup>th</sup>) in the area over the next 20+ years.

The area is projected to have approximately 365 students in the next 0-5 years and 432 students in the long run. This means that the area could support an ideal sized elementary school (450 students enrolled) in the future.

### Students and Projected Development in New Sprecher Area



Current students (points) and Projected Development (polygons) are filled with the color of the area they lie in