



Stronger together, now more than ever

We are facing a unique opportunity to invest in Madison's future, which lies in the hands of **our public school system's 27,000 growing minds.**

The needs of our schools and students existed before COVID-19, opportunity and resource gaps were magnified by school closures and quarantine, and as we begin to recover together as a city, the chance to lift Madison up as a thriving, equitable, and inclusive community for generations to come is more important than ever.

What the future could look like The school board is asking voters to consider 2020 Referenda on the November 3 ballot, which seek to invest \$350 million into Madison's public schools in order to:



Significantly update learning environments in Madison's four main high schools, benefiting MMSD students in every attendance area. Part of a \$317 million facilities investment



Bring Capital High students together in a school building we own and update that building to best serve high school scholars. Part of a \$317 million facilities investment



Build a new elementary school in the Rimrock area to give students and families a much-needed neighborhood school, reduce transportation burdens on students and families, and discontinue leasing space from another district. Part of a \$317 million facilities investment



Allow Madison's public schools to continue and grow strategic equity projects aimed at disrupting societal and systemic inequities and eliminating disparities that fall along racial and socioeconomic lines. Part of a \$33 million operational investment



Allow our schools to preserve vital student programming in the arts, music, science, technology, athletics and more, giving Madison's future citizens and leaders a wide breadth of foundational experiences. Part of a \$33 million operational investment



Place and maintain highly qualified educators in our classrooms, with a focus on teachers of color and avoiding teacher layoffs that result in increased class sizes. Part of a \$33 million operational investment



Reduce the carbon footprint of our facilities and operations, leading to a future with cleaner and operationally more efficient facilities.

You Spoke we listened...



50 Input
Sessions

Includes Targeted,
Informational and
Open Community



4456

Responses
to Community Survey.
Includes MMSD families,
students, staff and
community members

What we heard from the Madison community



Addressing urgent needs

Over the last several years and throughout fall 2019, district staff and board members collected your ideas and feedback on proposed projects and dollar amounts through community meetings, focus groups, surveys and more. The school board has taken your input and constructive feedback in specific areas and made adjustments accordingly.

Environmental sustainability is important to you

Environmental sustainability is a growing concern among many of our students, families and community members. You advocated for our high schools to combine environmental education and community engagement as teaching tools, in tandem with tangible sustainability projects. The board heard your desire for additional investments in this area and arrived at a \$2M figure to improve the sustainability and health of our high schools.

A desire for transparency and specificity

We also heard a desire for transparency and a need to be more specific when discussing exactly how operating funds would impact equity programs and projects critical to narrowing gaps and an array of student programming. In response, we've articulated equity investment priorities (see mmsd.org/equity-projects). For example, with funding, we could make 4-year-old kindergarten a full-day program for those who need it most. We could bring permanent WiFi to those families and students who need it at home. We can and will solve structural opportunity gaps together.

You want to know more about Capital High

Capital High opened as MMSD's newest high school in 2016, with two locations to serve students eager to re-engage in school through personalized learning in a smaller community that supports academic and social-emotional growth. Capital High students are goal-driven scholars, poets, musicians, athletes and more.

Meet the Capital High Community



mmsd.org



mmsd.org/future-ready

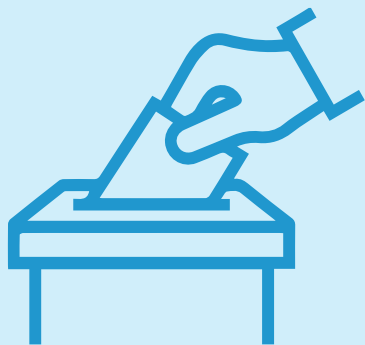
Operating referendum adjustment

The original operating referendum model that the board proposed had an incremental \$87 tax increase over 4 years for homeowners, on average*. But after getting your feedback, we explored what it might look like to decrease the operating referendum, if possible. The board landed on a \$3 million decrease from the original model, bringing the average impact on homeowners down to an \$80/year incremental increase over 4 years.



Is it the right time for this investment?

We've been watching how other communities throughout the state and country are reacting to school referenda during the pandemic. We have seen, time and again, communities staying true to their commitment before COVID-19 happened, and coming through for their youth.



Ninety-one percent, or 52 of 57 referendum questions, passed on ballots across Wisconsin in April 2020, totaling more than \$1.7 billion across 44 school districts. Six (6) recurring and 21 non-recurring referendums passed and 25 debt referendums passed.

- ▶ Racine passed a \$1 billion 30-year referendum
- ▶ Milwaukee passed with 78% of the vote, allowing Milwaukee Public Schools to increase its revenue limits through property taxes by \$87 million over four years.
- ▶ In Dane County alone in April 2019, 6 of 7 referendum questions passed across 5 districts. Two (2) of 2 facilities questions passed while 4 of 5 exceed revenue limit questions passed. In April 2020 in Dane County, 3 of 4 referendum questions passed across 3 districts. Two (2) of 3 facilities questions passed while 1 of 1 question to exceed the revenue limit passed.

Right now there are historically low interest rates, competitive construction bids and the potential for long-term higher spending on maintenance should issues in need of addressing continue to be deferred.

Planned March board vote postponed to mid-July

The school board had originally planned to vote on whether to go to referenda in March. When schools closed due to COVID-19 just days before the scheduled vote, they knew this would impact our community. As the weeks passed, MMSD shifted focus to ensuring students could access nutritious meals, educational materials, and a virtual learning infrastructure that ensured all students had access to technology devices and WiFi/internet. In addition, we felt a growing responsibility to wait, to be cautious, and to collect more information as the situation developed, before voting.

We recognize that this is an unprecedented ask for a community facing unprecedented needs, now more than ever.



Make an informed decision on November 3

Watch for opportunities to learn more about 2020 Referenda as voting day approaches, and get involved in what is shaping up to be a historic opportunity to transform Madison's future.

Find out more. Visit mmsd.org/future-ready



@MadisonSchoolsWI



@madisonschools