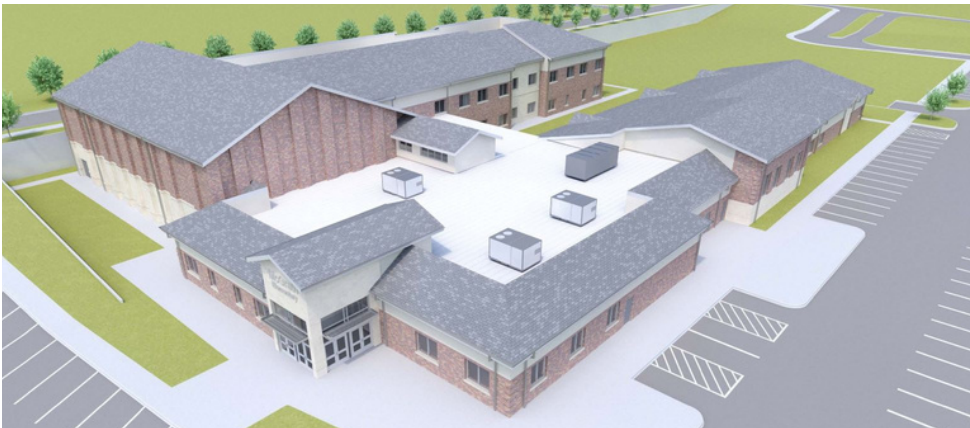


BRENTWOOD SCHOOL DISTRICT



PROPE

BECC & McGrath Elementary



CONCEPTUAL RENDERINGS

FOR THE LATEST INFORMATION, PLEASE VISIT
WWW.BRENTWOODMOSCHOOLS.ORG/FACILITIES

FREQUENTLY ASKED QUESTIONS

Why is construction taking place at McGrath before Mark Twain?

In working through the design process, the elementary facilities committee composed of parents, staff, and community members recommended a phased approach to the elementary facilities in order to limit student exposure to construction work. As such, work will be completed on the McGrath site first where the new construction will go up next to the existing McGrath structure, keeping students separated from the work. Mark Twain students will then spend a year at the old McGrath site while work is completed at Mark Twain, ensuring students are separated from construction and the classroom disruptions that it may cause.

After a year, Mark Twain students will return to their newly renovated building and the old McGrath will be demolished to make room for the remaining landscaping and sitework on the McGrath campus. In addition, we learned from the Middle/High School project what to expect in terms of disruptions during large scale construction. This approach will allow us to do more work at Mark Twain for the same amount of money and will offer fewer disruptions to student learning.

What are the security features of the new McGrath/BECC?

The new McGrath/BECC building will feature many new safety features. Visitor management will be handled by a secure vestibule. Visitors will need to be buzzed through two sets of doors in order to enter the building and many visitor tasks can be completed within the vestibule without stepping inside. Additionally, visitor management software will scan the Driver's License of visitors and complete a background check before printing a temporary ID badge. Interior doors will also be able to close portions of the building off so that the community can utilize spaces like the gym or cafeteria without interacting with classroom spaces. In addition to keeping students and staff safe from outside visitors, the building's gym will be an ICC-500 rated storm shelter capable of withstanding an F-5 tornado. The space will be able to accommodate all of the building's students and staff as well as potential community members.

What will parking and traffic be like?

As part of the project, the new McGrath site will have increased parking capacity. Additionally, when the site is completely finished (end of Phase II), traffic for pick-up and drop-off will flow through the campus, preventing backup on St. Clair Ave and Litzsinger Rd. Cars will enter one-way into the campus from St. Clair and will be able to cue up to the building for drop-off/pick-up. Approximately 80 cars will be able to fit within the campus, alleviating traffic strain on community roads. Cars will then exit onto High School Drive.

When Mark Twain, McGrath, and BECC students are all on the same campus during Mark Twain construction, additional traffic measures will be in place to help alleviate traffic. This includes staggered start/end times so that each building's traffic is entering/exiting the campus separately. The district completed a traffic study to understand the needs of the community and will be looking into further measures to help improve traffic around the McGrath campus.

Will there be enough construction parking?

Unlike the Middle/High School project, there will be ample parking for construction workers on the McGrath campus. The site will be organized to provide ample parking within the campus itself. Additionally, the district parking spaces along High School Drive will be reserved for construction parking, limiting the need for workers to park on streets in the community.

Where do we learn more?

Updates about the district's construction efforts are shared regularly on our website (www.brentwoodmoschools.org), our blog (www.brentwoodblog.org), on our social media (@BrentwoodMOSD), in the Pulse Newspaper, via email, during community and Board of Education Meetings, recordings on our YouTube channel (bit.ly/bsdyoutube), in bi-annual mailings, and in flyers and other resources sent to local community spaces and handed out to neighbors. The website will always have the most up-to-date information regarding upcoming events and details.