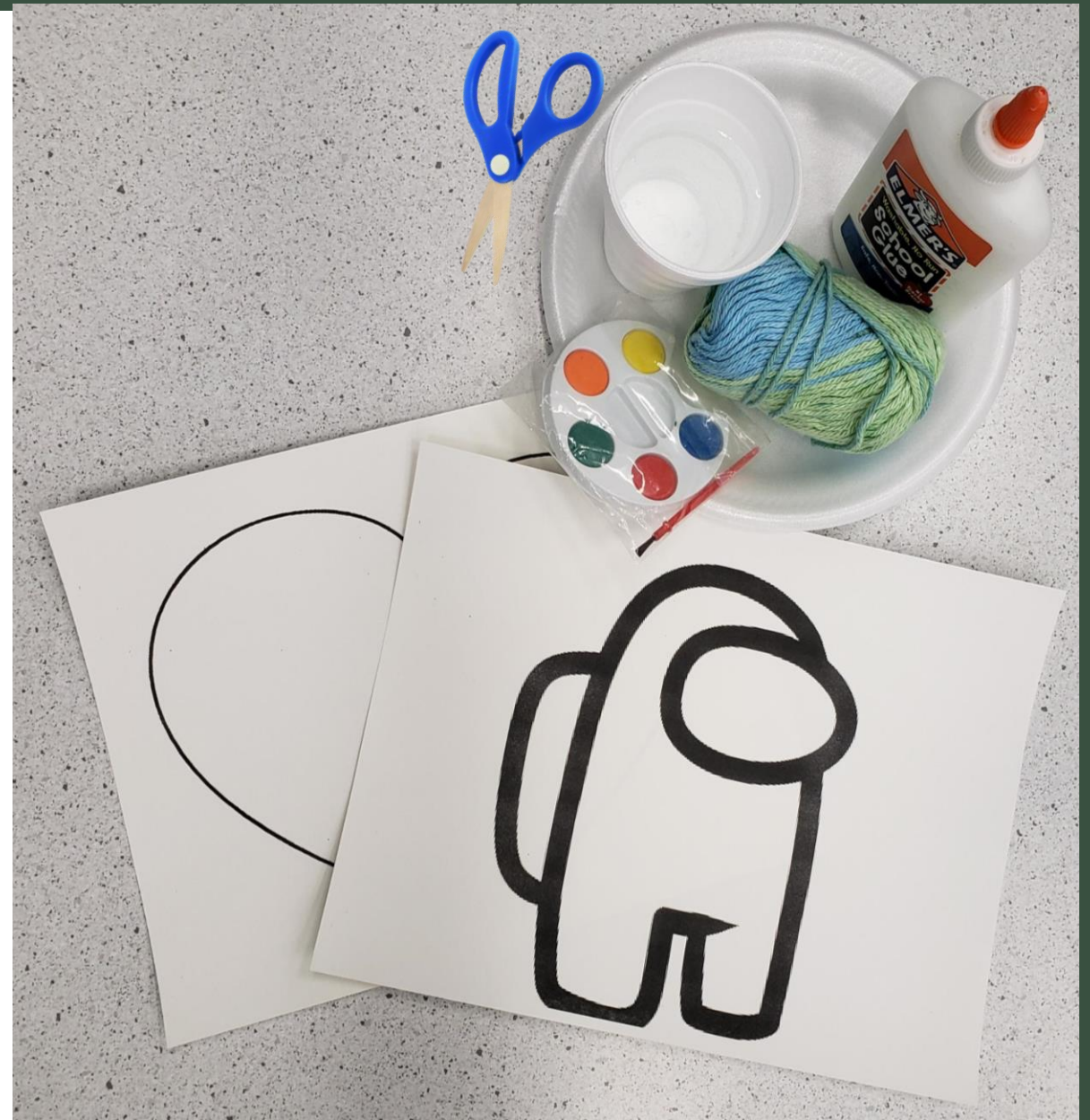


Yarn  
Painting

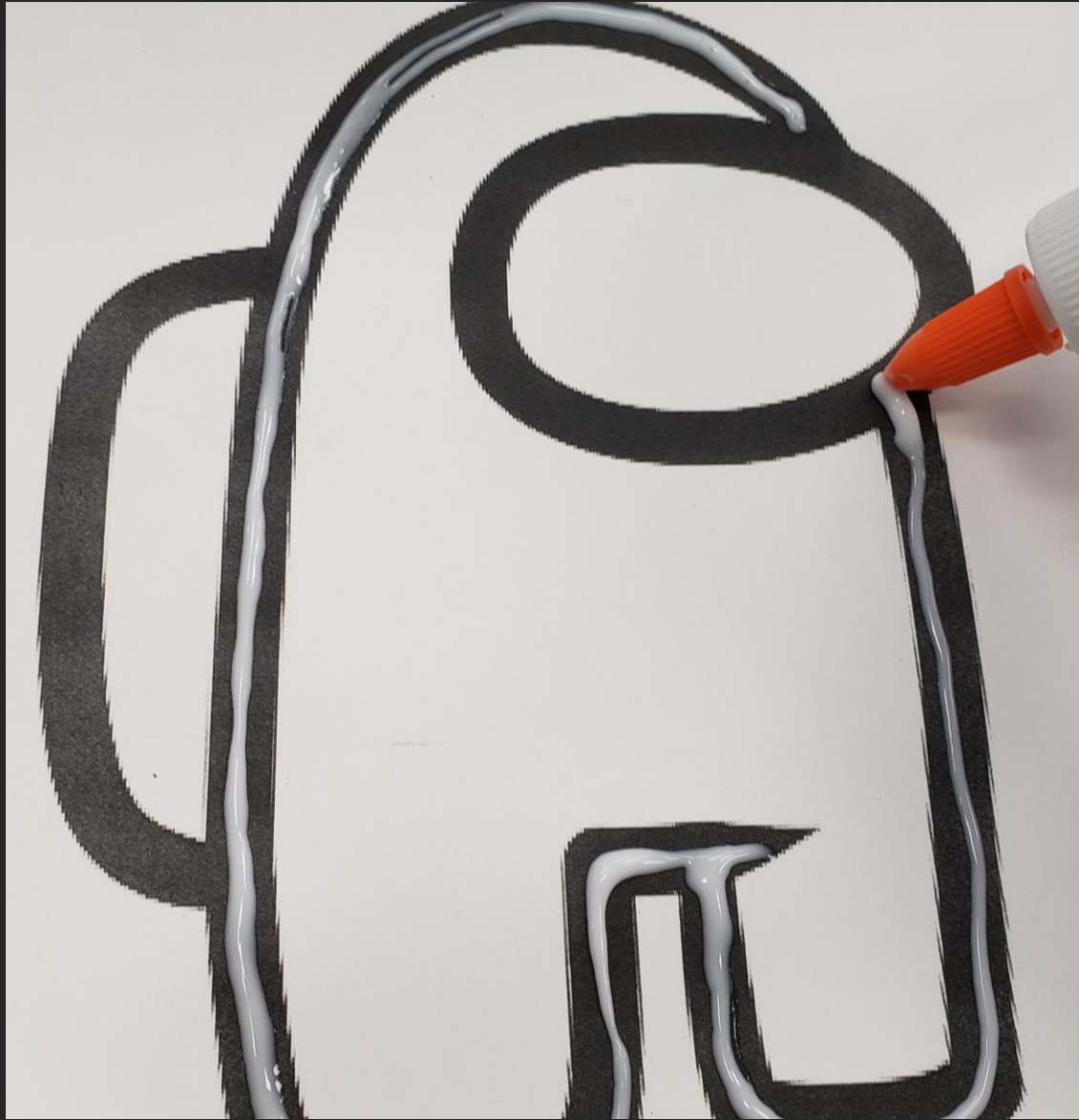


# You will need:

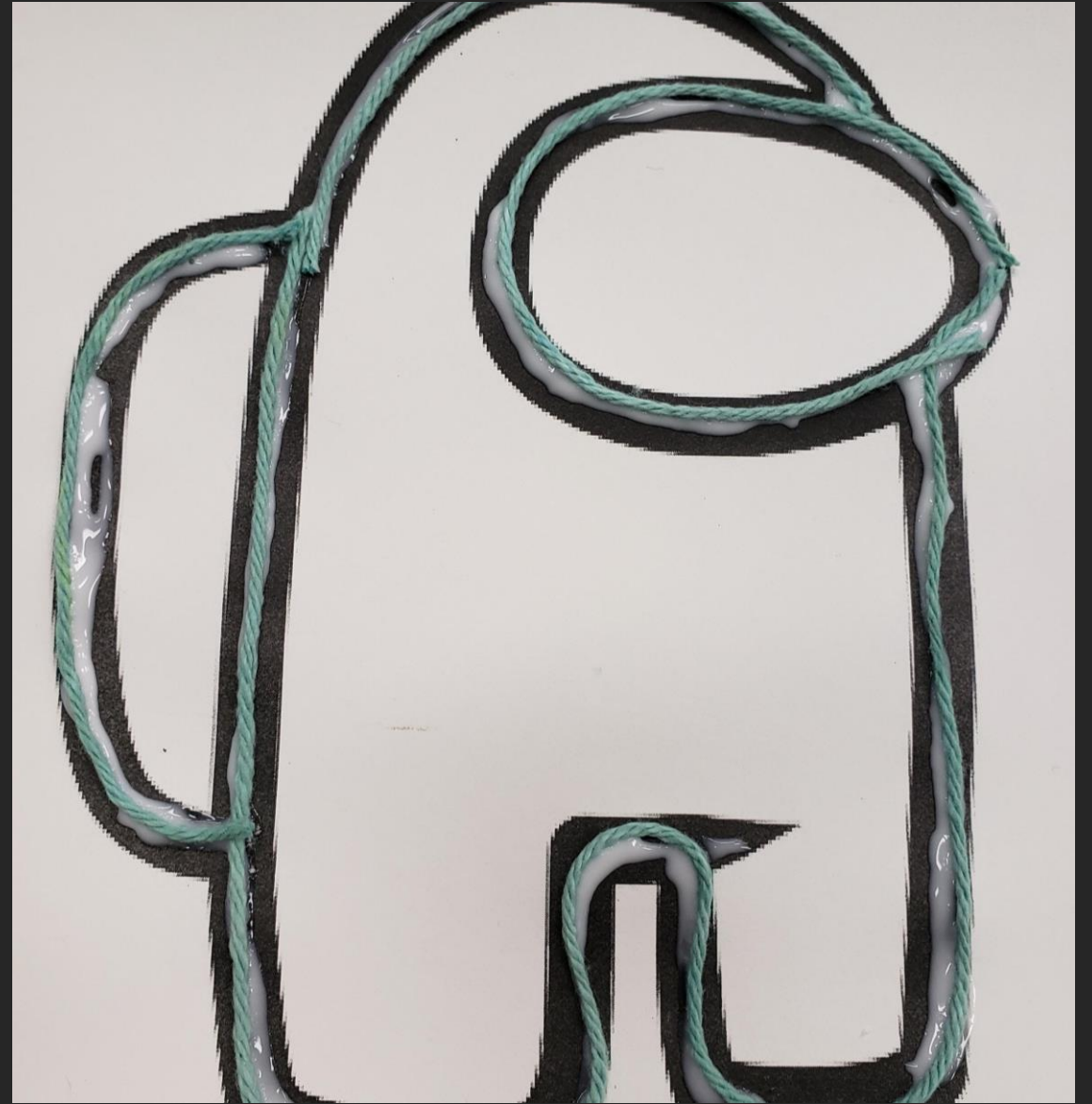
- Outline of a shape or character you like
- Glue
- Yarn
- Watercolor
- Scissors
- Water



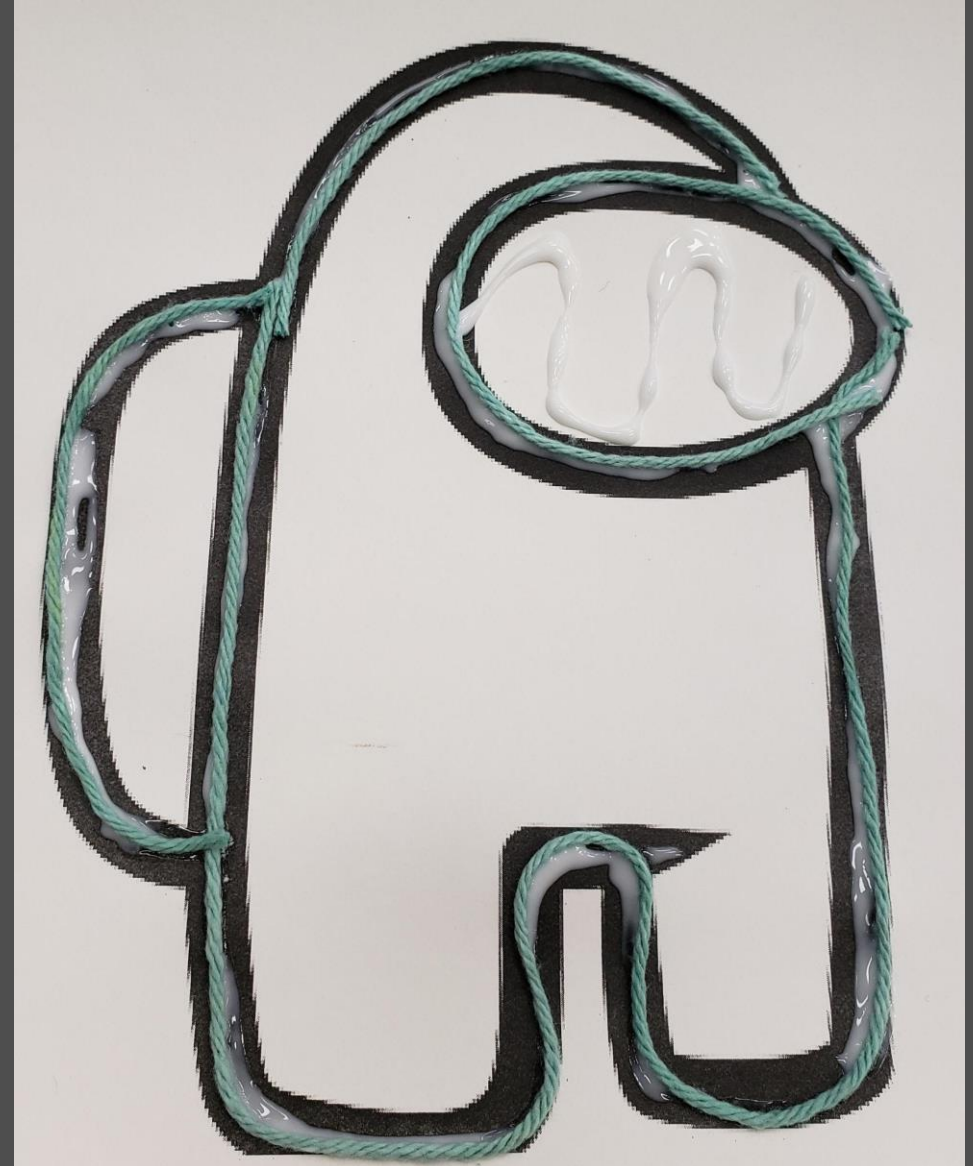
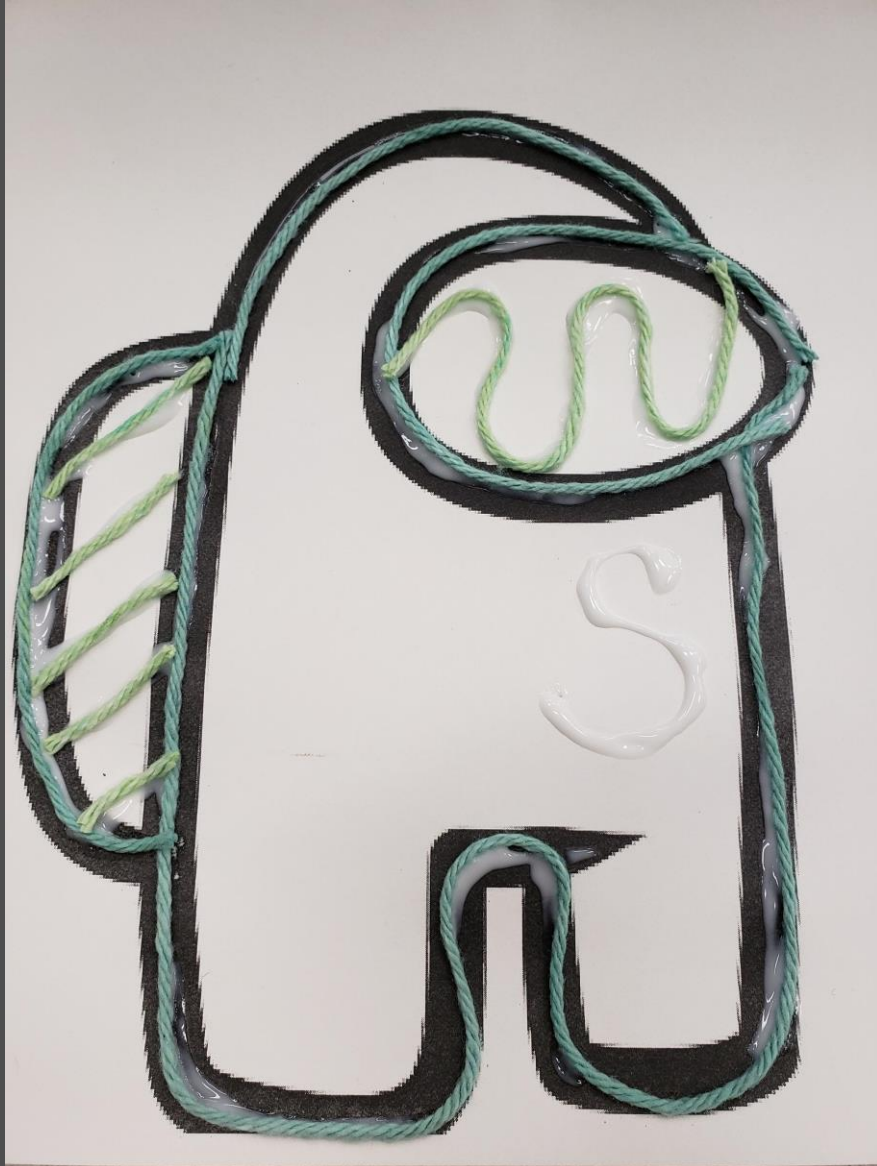
Pour the glue over the outline of the picture



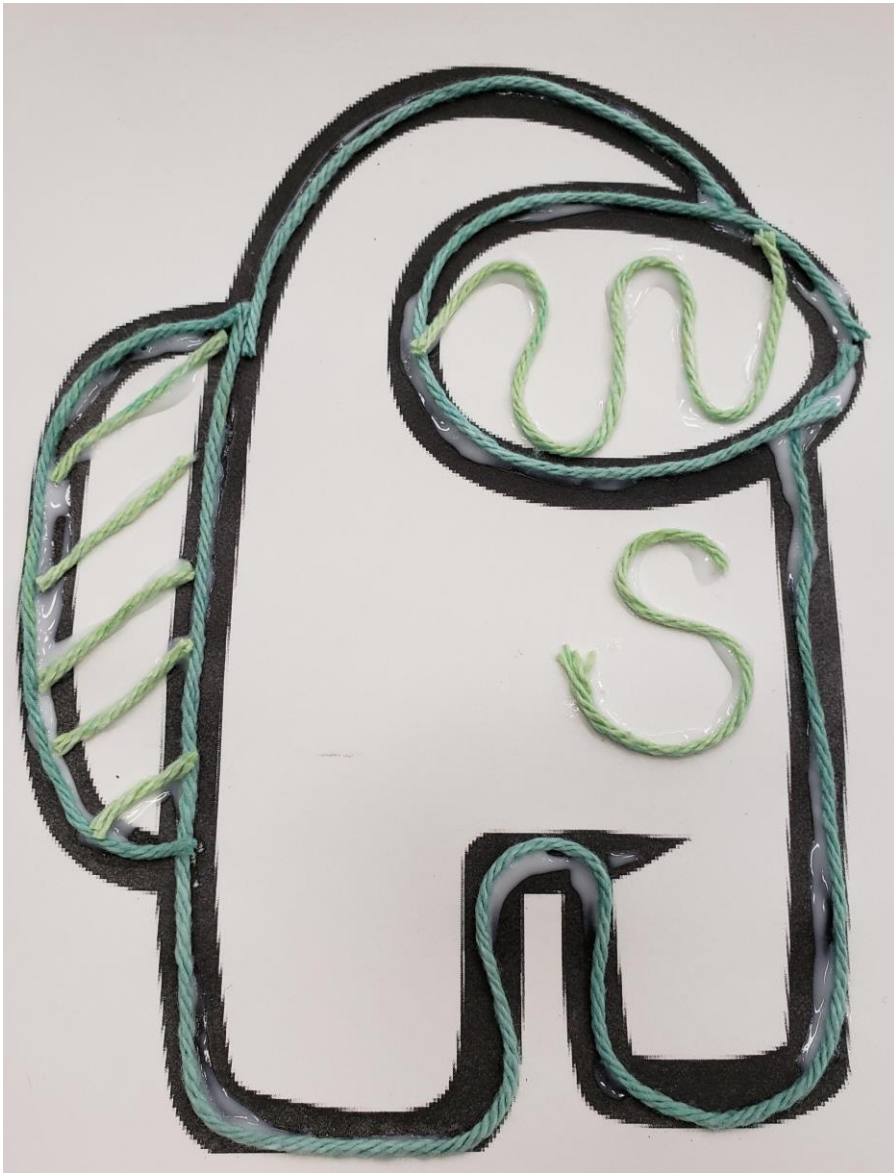
Put the yarn over your glue



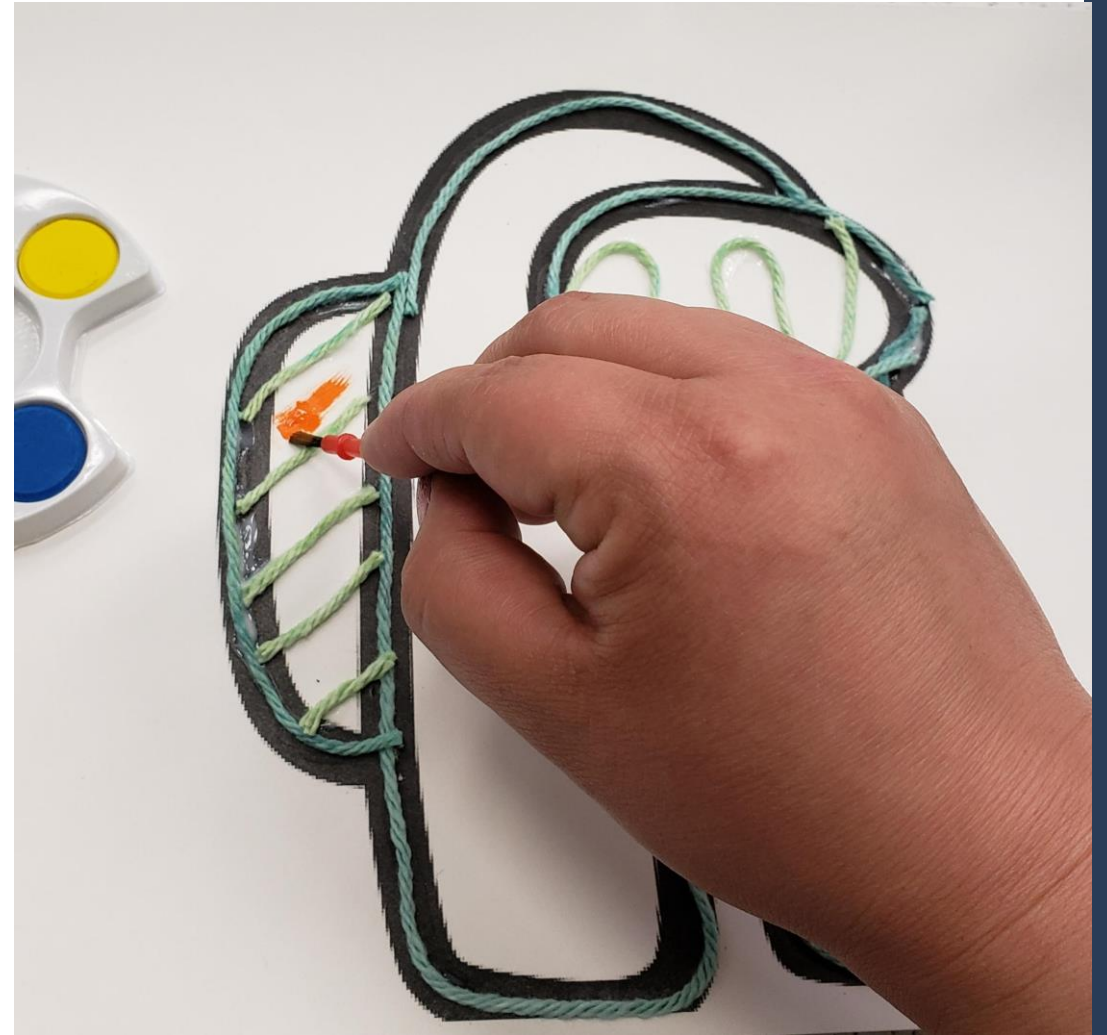
You can choose to put extra designs within the outline of the drawing using your glue. Then cover with the yarn.

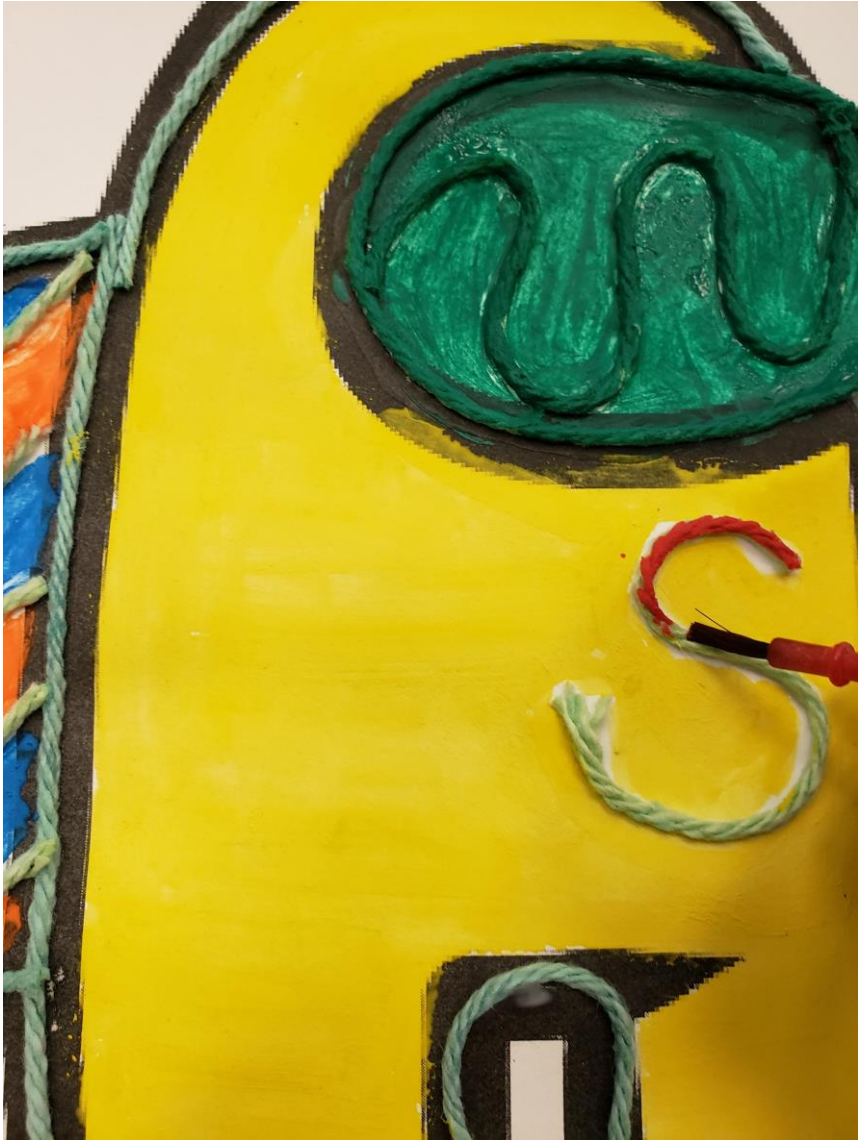


Once you are satisfied with your designs, let the glue dry.



Then start painting





Finished!

