

WELCOME STUDENTS AND FAMILIES

For our presentation this evening, we ask that you adhere to the following protocols:



Please keep your microphone muted during the presentation.



Enter questions in the Chat as you have them. We will answer them during or at the end of the presentation.



We will have time at the end of the presentation for questions not asked or answered during the presentation.



Thank you. Our meeting will begin shortly.



Ambulatory Care Network 2021 Career Launch Internship Program

Providence, Renton Technical College, Renton School District, Highline Public Schools, and WA Alliance for Better Schools are partnering to offer a cooperative-education opportunity to fast-track into a project management career as a Student Project Manager in the Providence Ambulatory Care Network.



Our Partners and Presenters



- **Kevin Smith**
- **Terry Derrig**



- **Chance Gower**
- **Donna Marsh**



- **Chelsea Good**



- **Kirsten Saint-Clair**
- **Michael McClain**
- **Allen Johnson**
- **I'Eisha Parker**



- **Shereen Henry**



What we'll cover this evening:

A program overview consisting of who we are, what we do, why we do it, where we do it and when and how you'll join us!

Who is Providence?



Mission

As expressions of God's healing love, witnessed through the ministry of Jesus, we are steadfast in serving all, especially those who are poor and vulnerable.

Vision

Health for a Better World.

Values

Compassion, Dignity, Justice, Excellence, Integrity.

Promise

Know me, care for me, ease my way.

What is Providence?

- Providence is a comprehensive health care organization, we are serving more people, advancing best practices and continuing our more than 100-year tradition of serving the poor and vulnerable.
- Together, our 120,000 caregivers (all employees) serve in 51 hospitals, 1,085 clinics and a comprehensive range of health and social services
- We help people and communities' benefit from the best health care model for the future – today.



 **51**
HOSPITALS

 **1,085**
CLINICS

 **5m**
UNIQUE
PATIENTS
SERVED

 **16**
SUPPORTIVE
HOUSING
FACILITIES

 **120k**
CAREGIVERS

 **38k**
NURSES

 **25k**
PHYSICIANS

 **2.1m**
COVERED
LIVES

 **1.2m**
HOME HEALTH
VISITS

 **HIGH SCHOOL
NURSING
SCHOOLS &
UNIVERSITY**

 **1**
HEALTH
PLAN

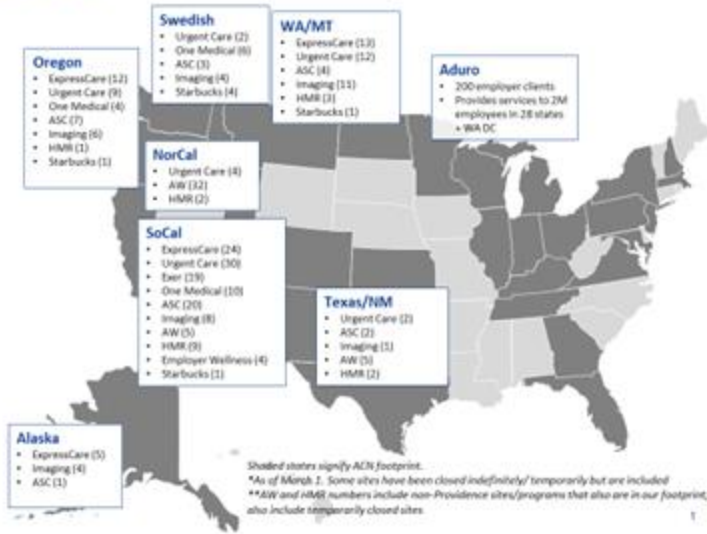
 **\$1.5b**
COMMUNITY
BENEFIT

What is the Ambulatory Care Network?



What is the Ambulatory Care Network?

ACN | A National Division



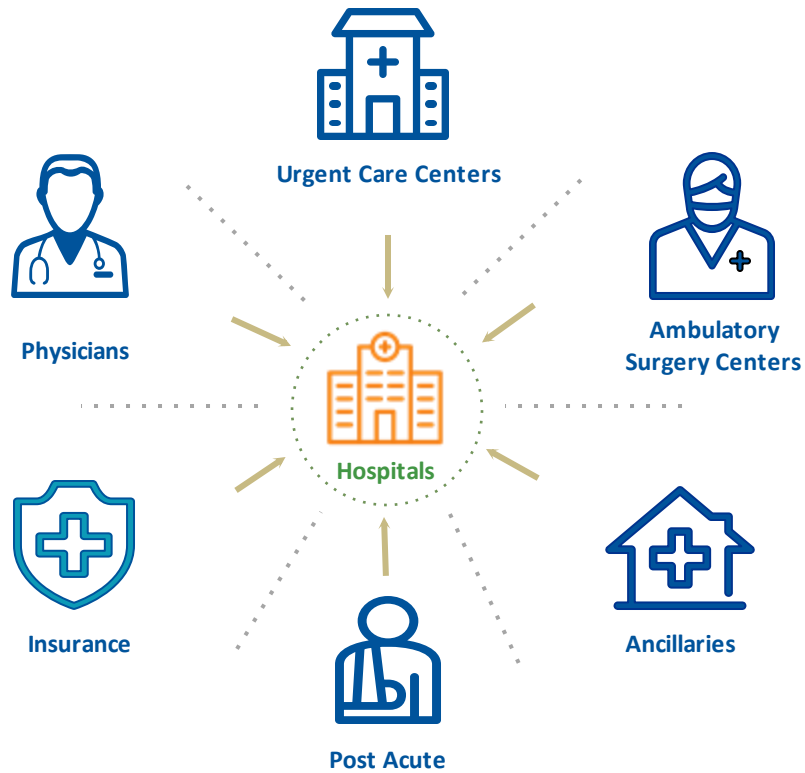
We partner in the well-being of all people by creating personalized, convenient, affordable health solutions.



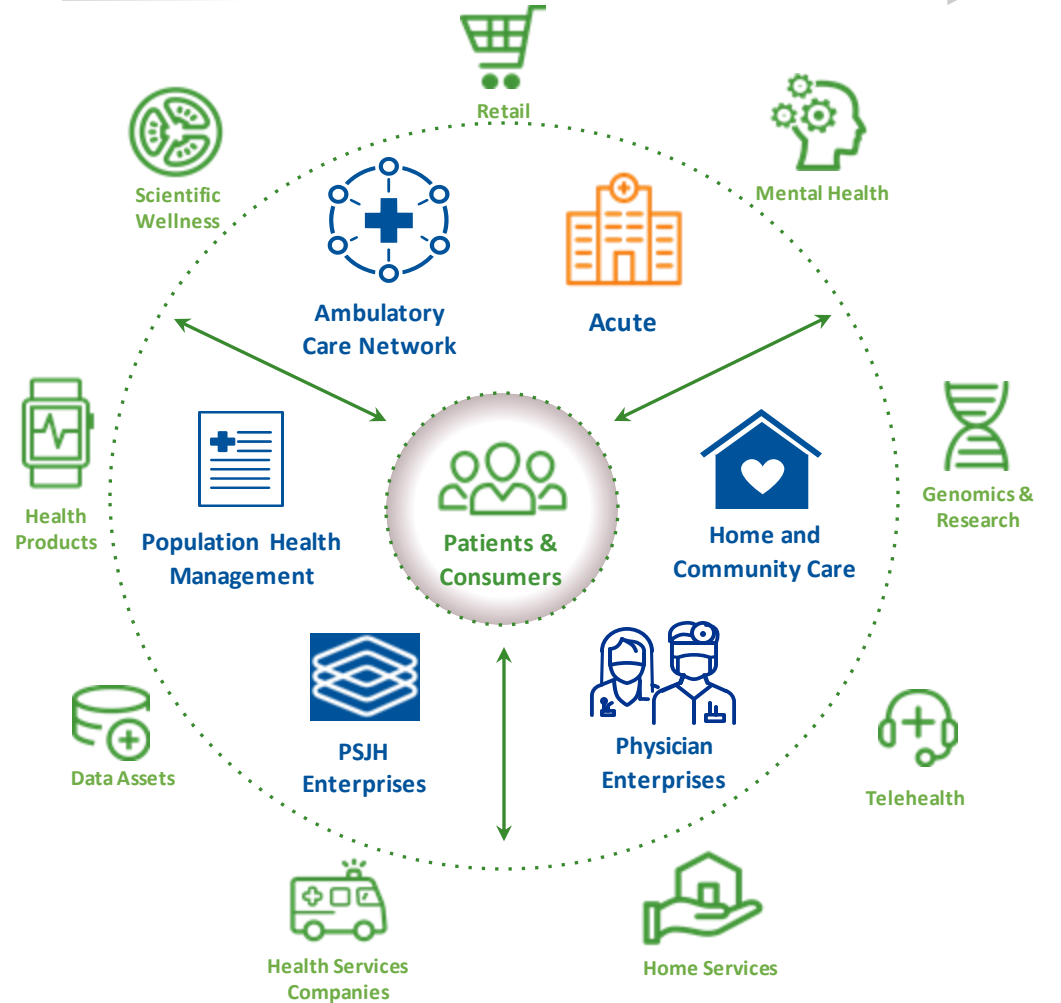
Providing patients access to an optimized, lower cost, consumer-centric, connected ambulatory care network is foundational to evolving our care delivery model and accelerating our journey to Health for a Better World.

The Work you'll enable: Health 2.0: Health for a Better World (aka “The Why”)

HEALTHCARE 1.0 GEOGRAPHICALLY ANCHORED



HEALTH 2.0 Digitally Enabled: Omni-directional



Career Pathways

There are many different ways to attain a career and be competitive against others interviewing for the same job. Some of these pathways include:

- **Traditional 2 and 4-Year degrees**
- **Apprenticeships and Certificate Programs**
- **Career Launch Programs:**

ACN Career Launch Program





PROGRAM
ELIGIBILITY AND
OVERVIEW

Program Eligibility

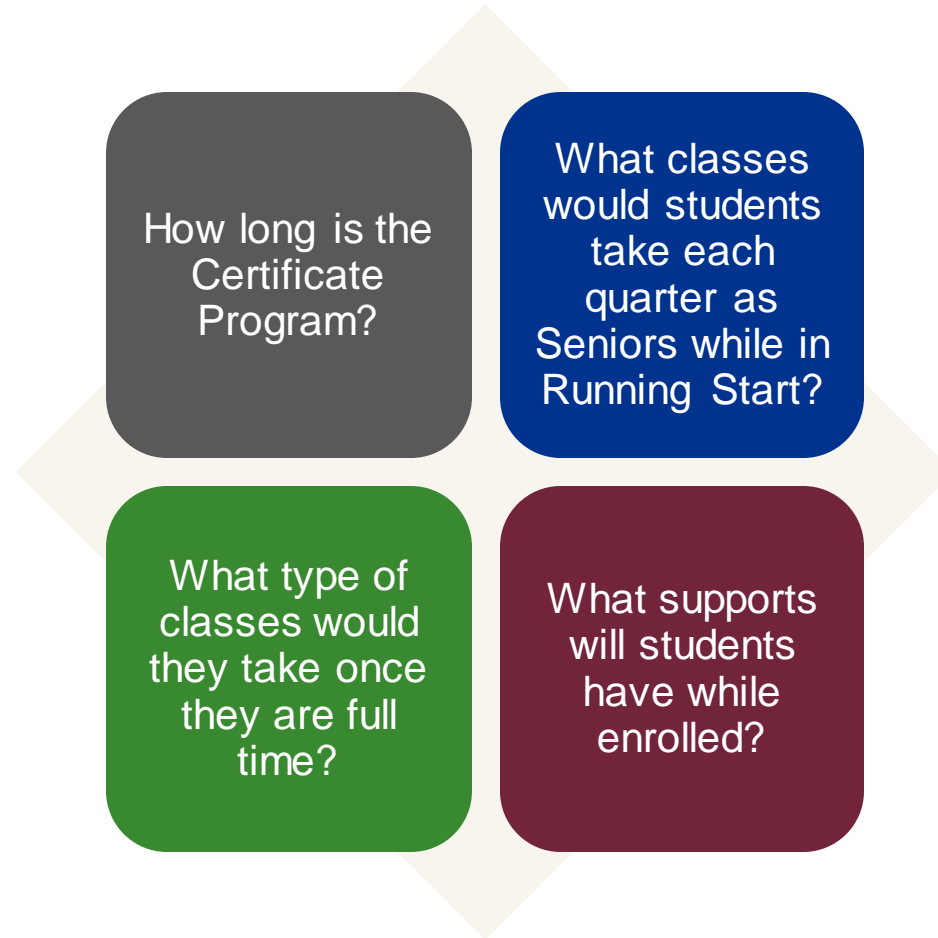
Must be a current high school junior (grade 11) in Renton or Highline Schools

Must be interested in fast tracking with a Career Launch program that includes worksite learning in internships and earning a college certificate

Must be interested in entering the workforce upon completion of the 2-Year program



Certificate program at Renton Technical College



Running start

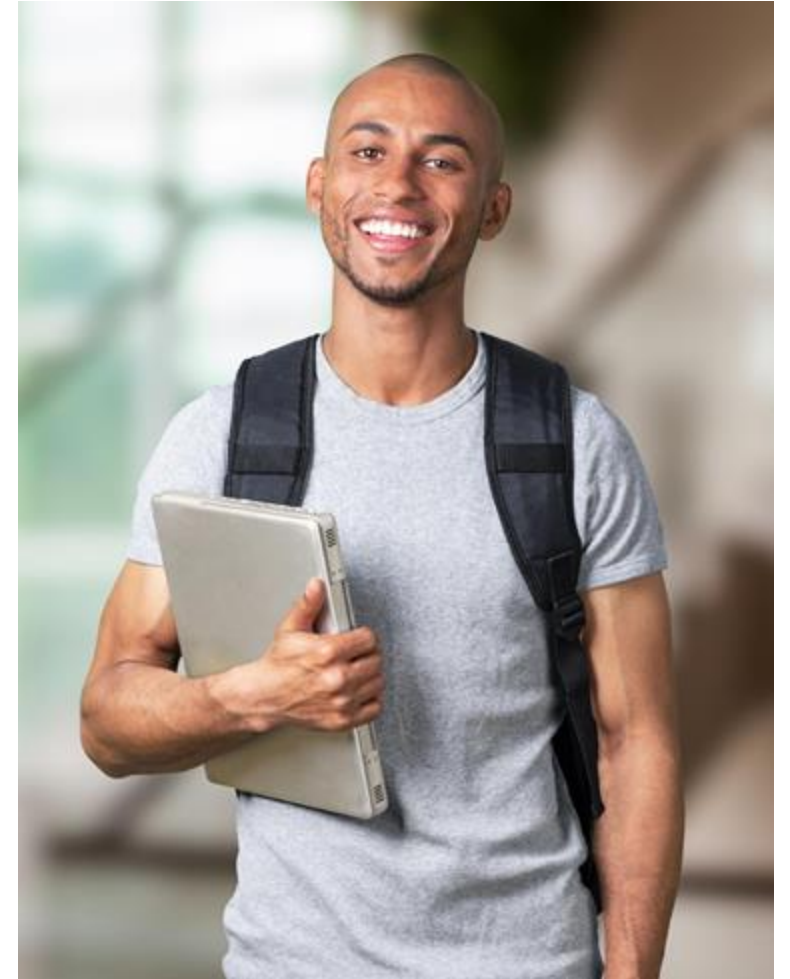
Students accepted to the program will be required to complete the Running Start application at RTC, including the Enrollment Verification Form (signed by High School Counselor)

Parents/guardians do not have access to student information (grades, classes, progress, etc.) under FERPA. Written consent from student required to release information

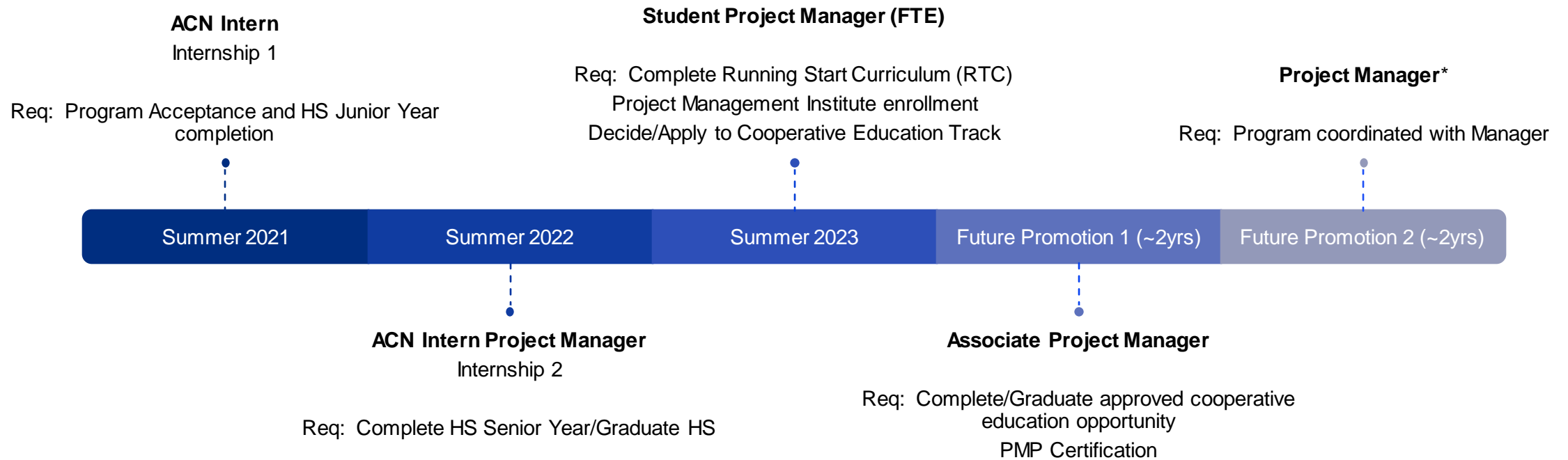
Running Start credits count as high school AND college credits, grades are on permanent record

Students required to pay for class fees, textbooks, supplies, etc. (Fee waiver available for students on free/reduced lunch)


High school and College calendars are different



Providence Internship Opportunity



* At this stage, aspirant should be highly-competitive with applicants for MHA grad programs/MHA Interns



**Planning
Resources**



**Assemble
& Lead Project
Teams**



**Time
Management**



Budget

WHAT DOES A PROJECT MANAGER DO?

PROJECT MANAGER



**Quality
& Satisfaction**



**Manage Issues
& Risks**



**Monitor
Progress**



**Reporting &
Documentation**

What do project managers do?

They plan, budget, monitor and report on the project with project management tools, sometimes pitching the idea of the project or being assigned to it once it's already been approved.

The project manager is the bridge between upper management and the teams tasked with the actual execution of the project. They make sure the scope of the project is sound, reporting regularly on the progress of the project and that it is staying on the approved schedule.



Project Managers? Program Managers?

Program managers are like project managers, only their responsibilities go beyond one project. A program manager is managing a portfolio of usually related projects, which has its own unique requirements.



Providence Internship Opportunity

- Paid, on-site, 6-week Internship Opportunity, beginning on July 5th, 2021.
- Expected to be at an office location from 9am to 5pm, weekdays (holidays excluded).*
- All technology needed and additional support; (i.e. transit passes) as applicable.
- Internship handbook and an individualized program coordinated with the Internship Program Manager and department leads.
- Expected to attend all trainings, complete a weekly assessment, and outline their learning objectives with the Internship PM.

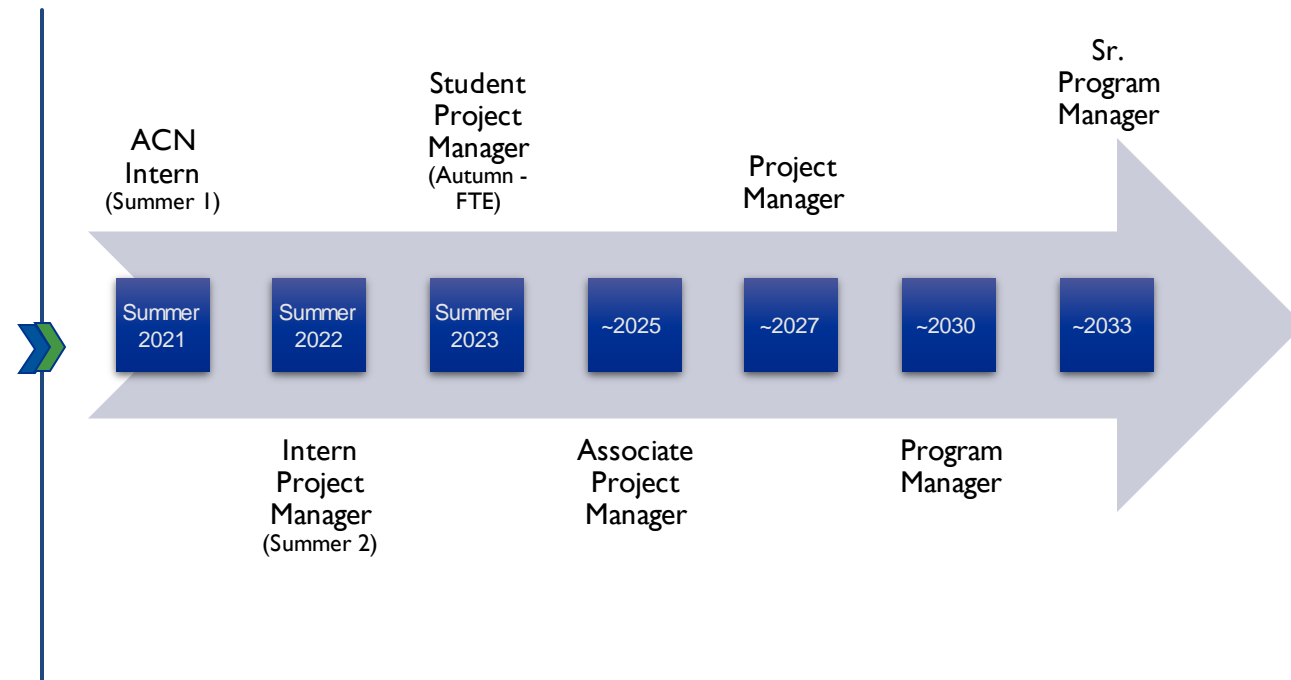


**We will be monitoring federal, state, and local guidelines regarding COVID-19 rules and regulations and will update this accordingly.*

One potential career pathway

- So, what's that look like? Making sense of the dollars and cents!
 - Interns start at \$19/hour!
 - This opportunity is geared to provide a “Living Wage” upon program completion. Upon hiring, a Student Project Manager salary is currently ~58k/year
 - According to salary.com: The average Senior Program Manager salary in Seattle, WA is \$117,574 as of February 26, 2021, but the salary range typically falls between \$99,506 and \$138,890.*

*<https://www.salary.com/research/salary/listing/senior-program-manager-salary/seattle-wa>



APPLICATION TIMELINE, ELEMENTS AND SUPPORT



Online Application Timeline: Important Dates!



Online application open March 31st



Application link and information will be sent to student's district email address following the information meeting



Online application due by 5:00 pm April 30th

Requirement: Short Answer and Paragraph Response Questions



General information short answer questions



2 written paragraph response questions:

**Where do you see yourself in two years?
Please explain why this opportunity appeals to you and what you hope to get from this program?**



Important: paragraph response questions are used to evaluate your communication, thinking and writing skills. Be thoughtful and thorough in your responses to these questions.

Requirement: Letters of Recommendation

Identify the teacher or counselor and ASK if you can list them.



Make sure you have the full name and best e-mail address for the person submitting your reference.



The letter of recommendation will be sent directly to Providence and not to you.

You will be required to have a teacher or counselor submit a Letter of Recommendation which speaks to your qualifications and character as a potential candidate for this program.

In your application, you will provide the name and email address of the teacher or counselor who be submitting this letter as a reference on your behalf.

Upon completion of your application, the teacher or counselor identified will be contacted by email with information on how and where to submit their letter. Their letter of recommendation will be sent directly to Providence and not to you.

Important: Discuss with the person you wish to write your letter before submitting their name as part of your application.

Requirement: Uploading a current résumé

- Résumé sample and instructions included in your Application notification email to your district email account
- Résumé can be any format you choose and should include:
 - **Your name and contact information (phone number and email address)**
 - **Your skills and strengths**
 - **Your work and/or volunteer experience**
 - **Relevant classes you have taken**
 - **Honors and awards you have received**
- Upload in PDF file format
- *Submitting with your application is preferred but you may also wait and submit a résumé once you have been chosen.*

Support staff - here for you.



High School Career Center Specialists

Help with developing your résumé or your application



High School Counselors

Help with Running Start questions and enrollment



Student support services at RTC



Free tutoring

Disability Resource Services

Laptop/wifi/calculator loans available

Free Food Pantry

Behavioral Health Counseling

On-campus computer labs and printing

FULL PROGRAM OVERVIEW: REQUIRED STEPS OF 2-YEAR PROGRAM

- 2-Year Program with the following required steps:
 - Step 1: Complete a paid internship at Providence during the summer between their junior and senior year of high school.
 - Step 2: Complete one Running Start class per quarter during their senior year within the Healthcare Program Manager certificate program at Renton Technical College.
 - Step 3: Complete a second paid internship at Providence during the summer after graduating from high school.
 - Step 4: Complete remaining coursework for the Healthcare Program Manager certificate at RTC during the year following high school graduation.
 - Step 5: Upon completion of the Healthcare Program Manager certificate program, receive an interview for a position with Providence as a Student Project Manager.

REMINDER: Applications are due April 30th

Questions?



**Break Out Rooms
By School District**

Please self-select