

# Fever, congestion, fatigue:

What might your symptoms mean?

## COVID-19

Incubation period: 1-14 days



### Common symptoms:

- Fever
- Dry cough
- Shortness of breath
- Difficulty breathing
- Fatigue
- Chills
- Headache

### Sometimes:

- Runny or stuffy nose
- Body aches
- Sore throat
- New loss of taste or smell
- Repeated shaking with chills

## Flu

Incubation period: 1-4 days

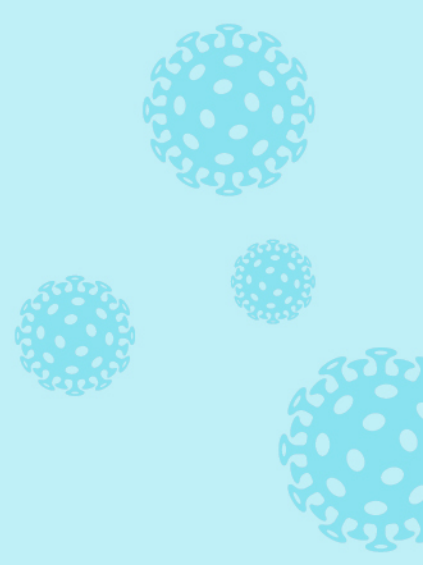


### Common symptoms:

- Fever/chills
- Cough
- Sore throat
- Fatigue
- Body aches
- Headache
- Loss of appetite

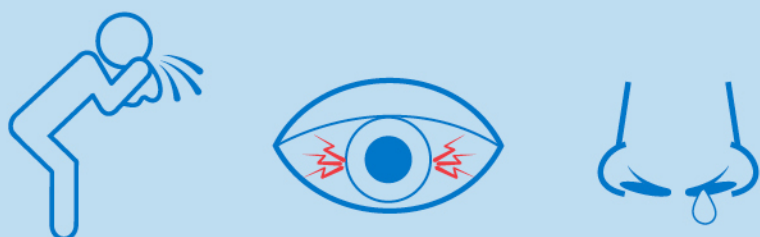
### Sometimes:

- Runny or stuffy nose



## Allergies

Incubation period: n/a



### Common symptoms:

- Sneezing
- Congestion
- Runny or stuffy nose
- Itchy/watery eyes

Allergy symptoms typically only affect parts of the head and are not accompanied by fever.