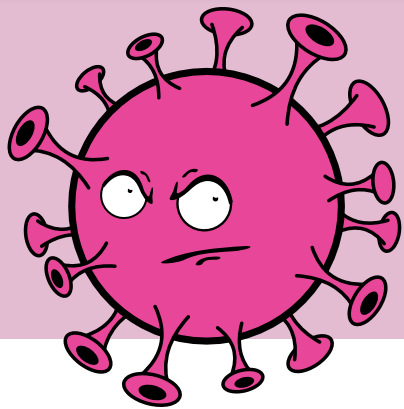


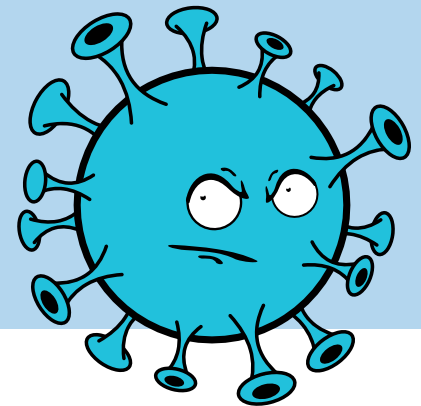
# COVID-19 and the flu

Differences and similarities



## COVID-19

## Influenza



### Symptoms

#### Common symptoms:

- Fever
- Dry cough
- Shortness of breath
- Difficulty breathing
- Fatigue
- Chills
- Headache

#### Sometimes:

- Runny or stuffy nose
- Body aches
- Sore throat
- New loss of taste or smell

#### Common symptoms:

- Fever/chills
- Cough
- Sore throat
- Fatigue
- Body aches
- Headache
- Loss of appetite

#### Sometimes:

- Runny or stuffy nose

### Duration of symptoms

#### Incubation period is 1-14 days

Typically, a person develops symptoms 5 days after being infected, but symptoms can appear as early as 2 days after infection or as late as 14 days after infection, and the time range can vary.

#### Incubation period is 1-4 days

Typically, a person develops symptoms anywhere from 1 to 4 days after infection.

### How long can someone spread the virus

#### Up to 10 days after first symptoms appeared


It's possible for people to spread the virus for about 2 days before experiencing signs or symptoms and remain contagious for at least 10 days after signs or symptoms first appeared. If someone is asymptomatic or their symptoms go away, it's possible to remain contagious for at least 10 days after testing positive for COVID-19.

#### Up to 7 days after first symptoms appeared

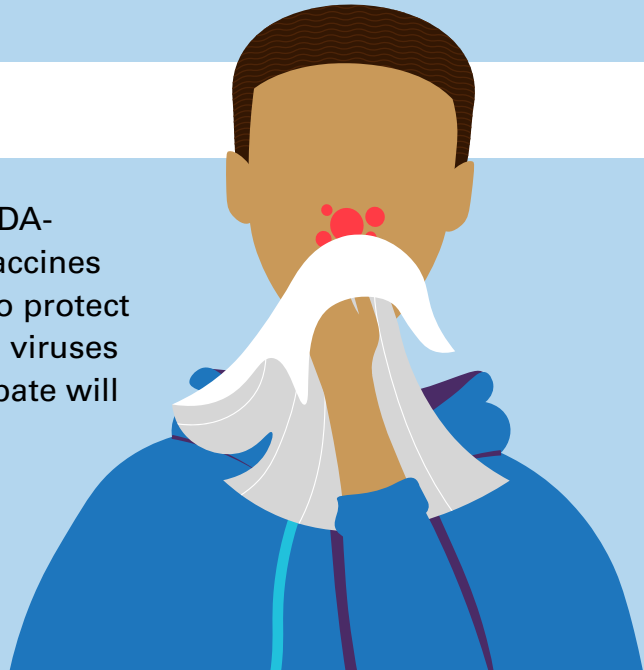
Most people with flu are contagious for about 1 day before they show symptoms. Older children and adults with flu appear to be most contagious during the initial 3-4 days of their illness but many remain contagious for about 7 days.



#### Vaccine



Vaccines for COVID-19 have been approved. Frontline workers will get the first doses and more will be available to more people in the coming months.



There are multiple FDA-licensed influenza vaccines produced annually to protect against the 3 or 4 flu viruses that scientists anticipate will circulate each year.