



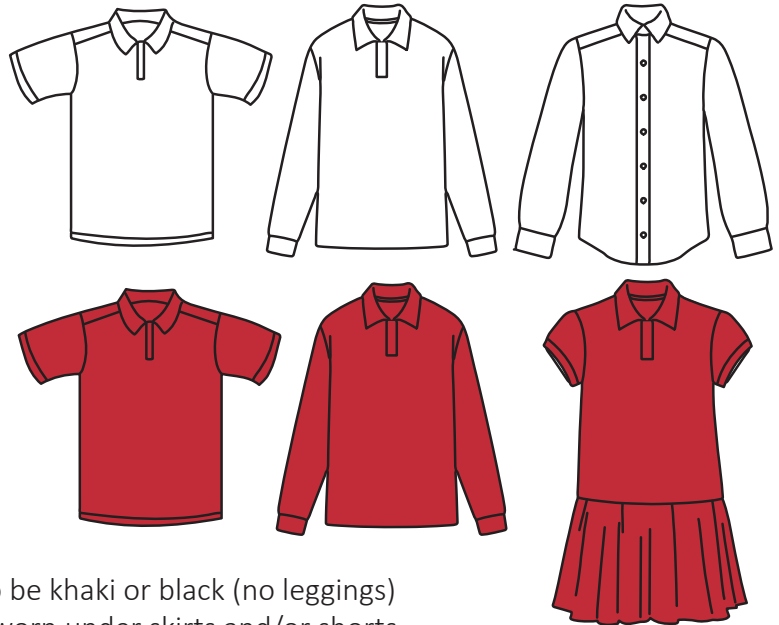
DRESS CODE - ELEMENTARY SCHOOL

STANDARDIZED DRESS GUIDELINES

Standard uniform items can be purchased at the school's store (the Spirit Shop) or other retailers, such as Uniqlo, Muji, Namdaemun Market, Lotte, Homeplus, etc. Students do wear other muted colors than noted below; the goal is for students to be comfortable and mindful of clothing type and color for school dress (ex: no clothing with logos). The recommended guidelines are stated below:

Shirts (Examples on the right)

- Solid white or red recommended
- Collared shirt- polo-style, button-up, or turtleneck
- May be short- or long-sleeve
- Spirit Shop sweatshirts
- Must completely cover the waist
- No logos or emblems (unless sold by the Spirit Shop)

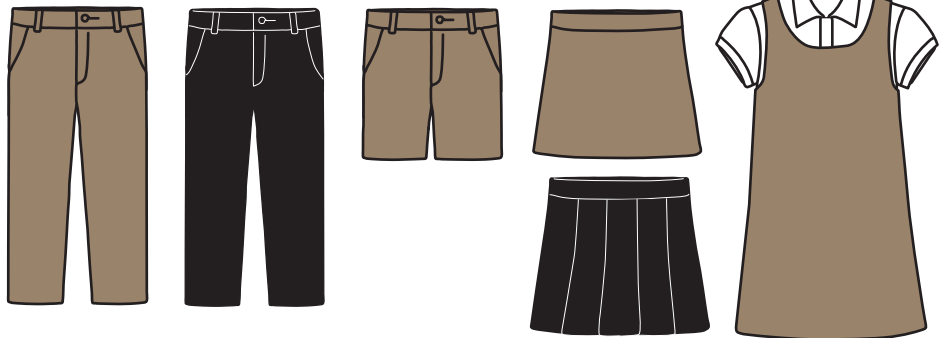


Pants, Shorts, Skirts (Examples on the right below)

- Long pants, shorts, and skirts recommended to be khaki or black (no leggings)
- Black, white, or gray leggings or tights may be worn under skirts and/or shorts
- No logos or labels (unless sold by The Spirit Shop)

PE Uniforms (Shown below)

- SFS PE kit (shirt, shorts, pants, jacket/hoodie options available from the Spirit Shop; black leggings under the PE shorts is acceptable)
- Swimming: one-piece, form-fitting swimsuit; swim cap for longer hair; towel; goggles; options available from the Spirit Shop



Summer PE Kit Shirt
for ES, MS, HS
25,000 KRW



Summer PE Kit
Shorts for ES, MS, HS
20,000 KRW



Winter PE Kit Jacket
for ES, MS, HS
45,000 KRW



Winter PE Kit Pants
for ES, MS, HS
30,000 KRW



Boy's Swim Trunk
for ES, MS, HS
45,000 KRW



Girl's Swim Tank
for ES, MS, HS
45,000 KRW

Shoes (Examples below)

- Trainers and sneakers are appropriate. Flip flops, crocs, slippers, high heels, platforms, or wedges are not allowed for safety reasons



Headwear

- Hats and hoods are for outside the buildings only, unless worn for religious purposes.

Winter Wear

- Winter coats, scarves, gloves, and caps may be any color, but must be placed in lockers or backpacks prior to classes.



UNIFORM - BRITISH SCHOOL

GUIDELINES

All uniform items, including PE kit, are available from the Spirit Shop on campus.

Shirts (Shown on the right)

- Must be solid navy collared shirt- polo-style or turtleneck for Key Stage 1 and 2
- Must be light blue button-up shirt for Key Stage 3
- May be short- or long-sleeve
- Must completely cover the waist.
- Undershirts should not be seen.
- Spirit Shop zip-up jacket and sweaters are recommended



Navy Polo T-Shirt
(Short sleeve)
for KS1 & KS2
22,000 KRW



Navy V-neck Sweater
(Long sleeve)
for KS1, KS2, KS3
45,000 KRW



Girl's Blue Shirt
for KS3
45,000 KRW



Boy's Blue Shirt
for KS3
45,000 KRW

Zip-up Jacket for
KS1, KS2, KS3
50,000 KRW



Trousers, Shorts, Skirts, Skorts

(Shown on the right)

- Must be grey
- No logos or labels (unless sold by the Spirit Shop)
- No undergarments showing



Girl's Pants
for KS1, KS2, KS3
55,000 KRW



Boy's Pants
for KS1, KS2, KS3
55,000 KRW



Boy's Shorts
for KS1, KS2, KS3
50,000 KRW



Girl's Skirt
for KS1, KS2, KS3
55,000 KRW



Girl's Skirt
for KS1, KS2, KS3
55,000 KRW

Socks, Tights

- Must be grey or black

PE Uniforms (Shown below)

- SFS PE kit (shirt, shorts, pants, jacket/hoodie options available from the Spirit Shop; black leggings under PE shorts is acceptable)
- Swimming: one-piece, form-fitting swimsuit; swim cap for longer hair; towel; goggles; options available from the Spirit Shop



Summer PE Kit Shirt
for KS1, KS2, KS3
25,000 KRW



Summer PE Kit Shorts
for KS1, KS2, KS3
20,000 KRW



Winter PE Kit Jacket
for KS1, KS2, KS3
45,000 KRW



Winter PE Kit Pants
for KS1, KS2, KS3
30,000 KRW



Boy's Swim Trunk
for KS1, KS2, KS3
45,000 KRW



Girl's Swim Tank
for KS1, KS2, KS3
45,000 KRW

Shoes (Examples on the right)

- Sports shoes are for PE only and only black shoes/trainers (**no white stripes or soles**) should be worn for the school day.



(Non-black)
PE only



Headwear (Shown on the right)

- School hats should be worn for outdoor play in the warmer/sunny weather.



Navy Sun Hat
15,000 KRW



Navy Cap
15,000 KRW

Winter Wear

- Outdoor coats in winter should be navy, black or grey to match with the school uniform colours.



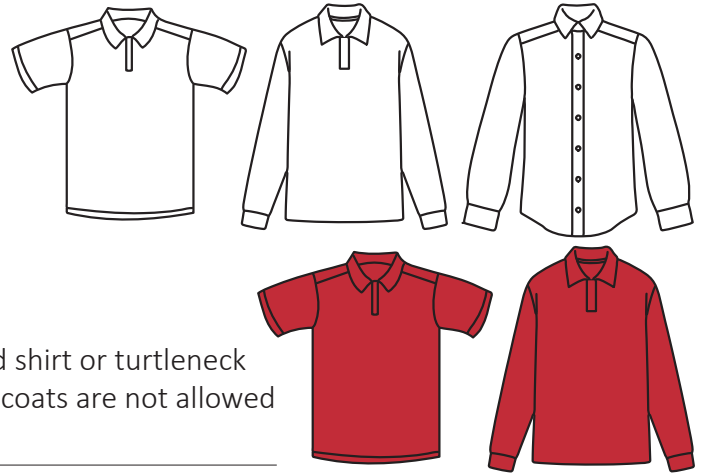
DRESS CODE - MIDDLE SCHOOL

STANDARDIZED DRESS GUIDELINES

All students will dress in a way that is appropriate for the school day or for any school sponsored event. The school is responsible for seeing that all students can comfortably engage in the educational environment and that student attire does not interfere with the health or safety of any student. Standardized dress ensures that attire contributes to a positive atmosphere for all students, and sustains a community that is inclusive of a diverse range of identities. The dress code is not meant to focus on every detail; the school expects that students respect the spirit of the code. To ensure effective and equitable implementation of this dress code, school staff shall enforce it consistently and in a manner that does not reinforce or increase marginalization or oppression of any group. The MS appreciates students and parents partnering with us on this so that we can focus less on dress and more on learning.

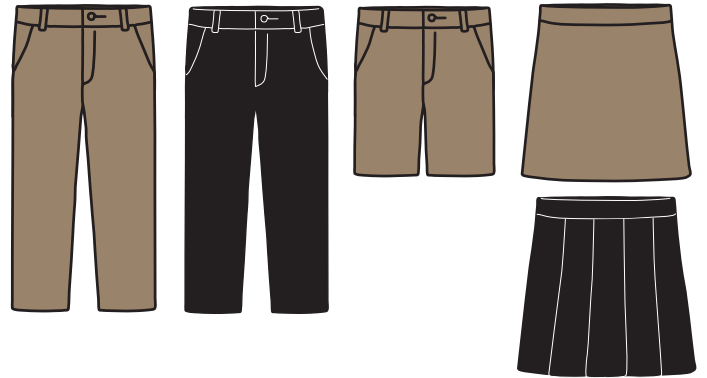
Shirts (Examples on the right)

- Must be solid white or red
- Collared shirt polo-style, button-up, or turtleneck
- May be short or long-sleeve
- Must not be ripped or frayed
- Must completely cover the waist
- No logos or emblems (unless sold by the Spirit Shop)
- Undershirts should not be seen
- Spirit Shop sweatshirts are acceptable with a collared shirt or turtleneck underneath. Other sweatshirts, sweaters, jackets, or coats are not allowed to be worn in classrooms.



Pants, Shorts, Skirts (Examples on the right)

- Long pants, shorts, and skirts must be khaki or black
- No sweatpants, athletic pants, or leggings
- Shorts or skirts must be mid-thigh or longer in length
- Black, white, or gray leggings or tights may be worn under skirts and/or shorts
- Must not be ripped or frayed
- Belt, if worn, needs to be black or brown
- No logos or labels (unless sold by the Spirit Shop)
- No undergarments showing



PE Uniforms (Shown below)

- Middle School students are expected to change into the required uniform for PE classes
- A separate pair of athletic shoes should be used for PE classes
- Only sweatshirts, hoodies, or jackets purchased from the Spirit Shop may be worn during class



Summer PE Kit Shirt
for ES, MS, HS
25,000 KRW



Summer PE Kit
Shorts for ES, MS, HS
20,000 KRW



Winter PE Kit Jacket
for ES, MS, HS
45,000 KRW



Winter PE Kit Pants
for ES, MS, HS
30,000 KRW



Boy's Swim Trunk
for ES, MS, HS
45,000 KRW



Girl's Swim Tank
for ES, MS, HS
45,000 KRW

Shoes

- Shoes must be mostly black or brown
- Flip flops, crocs, slippers, high heels, platforms, or wedges are not allowed for safety reasons

Headwear

- Hats and hoods are for outside the buildings only, unless worn for religious purposes

Winter Wear

- Winter coats, scarves, gloves, and caps may be any color, but must be placed in lockers or backpacks prior to classes



DRESS CODE - HIGH SCHOOL

GUIDELINES

Philosophy

The goal of the SFS Dress Code is to help create and contribute to a community atmosphere that is focused on learning in a school with students of varied ages. Students should dress in a manner, detailed below, that is appropriate to the situation. Teachers will warn students who are not following the Dress Code (or the spirit of the Code) and will refer students to the administration for further disciplinary measures in the case of serious offenses. Administrative actions in the case of serious offenses include, but are not limited to, sending students home to change or asking the parents to bring a change of clothes to school. The dress code does not attempt to embrace every conceivable situation in the realm of dress but is meant to provide a reasonable standard for parents, faculty and students.

Principles

- Clothing should be appropriate for promoting the goal of learning. It should therefore be comfortable for the wearer and not a distraction to learning.
- Dress should show respect for the culture of our host country, the cultures represented in our school and the students of varied ages attending SFS.

The Dress Code Specifics

- All aspects of dress should be neat, clean and modest.
- No offensive printing or offensive pictures are allowed, including references to drugs
- Tops must fit properly with a modest neckline. All tops must have wide enough sleeves to cover shoulder tops and the back. Undergarments and bare midriffs should not be visible.
- Pants should fit so that undergarments and bare skin are not visible.
- Dresses, skirts and shorts should be no shorter than a student's fingertips when a student is standing and their hands are hanging at their sides.
- Safe footwear (shoes or sandals) must be worn at all times, e.g. no open-toed footwear to be worn in Science classes.

PE Uniforms (Shown below)

- Warm weather - SFS PHE Shirt/Shorts.
- Cold weather - SFS PHE Shirt/Shorts; Black/dark Leggings with SFS shorts; SFS Tracksuit bottoms or dark sweats
- Dress code compliant Warm Athletic Hoodie/Jacket

*11th and 12th grade PHE classes are not required to wear the SFS PHE uniform, but are required to wear appropriate athletic shoes, shorts, and tops.



Summer PE Kit Shirt
for ES, MS, HS
25,000 KRW



Summer PE Kit
Shorts for ES, MS, HS
20,000 KRW



Winter PE Kit Jacket
for ES, MS, HS
45,000 KRW



Winter PE Kit Pants
for ES, MS, HS
30,000 KRW



Boy's Swim Trunk
for ES, MS, HS
45,000 KRW



Girl's Swim Tank
for ES, MS, HS
45,000 KRW

Exceptions

- Students may be asked to dress more formally for certain events.
- Students are encouraged to dress appropriately for School Spirit days.

Accountability

- Students are responsible for what they wear and the image they present of themselves.
- Parents are to ensure that their students understand and abide by the dress code.
- Teachers will be checking dress code throughout each day. Students of concern will be sent to the Assistant Principal.
- The Administration will take appropriate disciplinary measures for repeat offenders.