



R.H. Dana Middle School

2021 School Plan for Student Achievement

The Dana Middle School community is committed to providing the students with the tools and opportunities for success that create life-long learners and compassionate, productive citizens.



999 Students

Being a student at Dana means being a part of a community that addresses the needs of the whole child by promoting personalization, ownership of learning, and ownership of behavior.



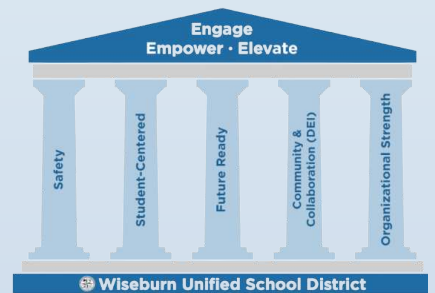
Stakeholder Involvement

The stakeholders involved in developing the SPSA include:

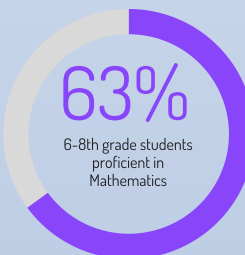
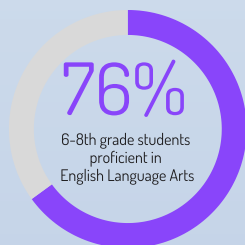
- Teaching Staff
- School Site Council
- Administrative Team
- Students and Parents



WUSD Guiding Pillars



Achievement Data CAASPP 2019*

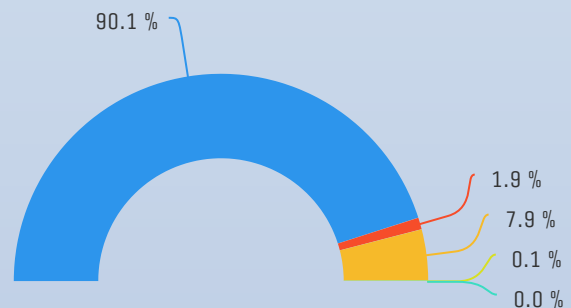


*CAASPP assessments were suspended in 2020 due to COVID-19



Budget Summary

Funding by Goal



- Goal 1 Safety
- Goal 2 Student-Centered
- Goal 3 Future Ready
- Goal 4 Community/Collaboration
- Goal 5 Organizational Strength

Goals and Key Actions

GOAL



1 Safety

Dana school will ensure equitable conditions of learning to all students through safe and secure campuses, access to highly qualified teachers and required materials, as well as programs and resources to ensure their social-emotional wellbeing.

- Custodial staff will complete daily/weekly/monthly tasks as outlined in district approved job descriptions. Custodial staff, district maintenance crew and office staff will consult regularly to address facility issues and concerns.
- New cleaning and visiting protocols are in place to maintain the health and safety of all students. This includes cleaning monitoring logs, additional equipment for sanitizing, and health screenings for all members stepping onto campus.
- 100% of teachers will be fully credentialed and appropriately assigned as measured by human resources assignment monitoring reports.
- Dana will continue to provide all students access to all the instructional materials in print or electronic formats as reported in the SARC report.
- Positive Behavior Support (PBS) to be provided by the entire school staff with oversight from our Community of Respect and Empathy (CORE) team and 2 full time counselors. Implementation of school-wide PRIDE system to encourage positive behavior across school settings is practiced by all Dana staff. Students receive student merits for their positive behavior and demonstration of preparedness, respect, integrity, determination and empathy (PRIDE).

GOAL



2 Student-Centered

Dana school will ensure an instructional program that is focused on supporting individual student growth and achievement, as well as social-emotional development, by creating systems that meet the needs of all students.

- IXL - Math support program- Offers a web-based, anytime access program that supports mathematics through a gamification based application.
- Accelerated Reader- School-wide implementation of the Accelerated Reader Program as both a universal screening tool and a reading intervention for all students.
- NewsELA program as part of the reading intervention program provides news at varied Lexile levels, primary sources, and more, with standards-aligned formative assessments.
- English Language Development (ELD) instruction provides instructional time within the core program.
- Collaborative pacing, planning, and response to data via the TCT Program.
- A Guiding Coalition team has been created to address the learning needs of all students.
- Pod Schedule and Lessons- Strategic weekly plans for Pod class ensure that students engage in social-emotional learning each week with lessons from Second Step.

Goals and Key Actions

GOAL



3

Future-Ready

Dana school will ensure that students are equipped for future success by focusing on collaboration, critical thinking, problem solving, and creativity across all curricular areas, while also nurturing student growth as confident, resilient learners, and responsible citizens.

- Every student will have access to a Chromebook device in each of their classes.
- STEM classes offered for electives
- PRIDE matrix- Students are encouraged to learn and then demonstrate Dana PRIDE (preparedness, respect, integrity, determination and empathy).
- Students interested in pushing their math thinking further can join the Math Club.
- Herndon Competition Team- An annual competition task is created by the Aerospace Corporation that includes an experiment and essay writing component. Dana students interested in joining the Herndon team can apply.
- Society of Women Engineers (SWE)- Our goal is to continue exposing young women to the world of engineering, with the hope that they will pursue a career in that field.

GOAL



4

Community and Collaboration

Dana school will increase family and community involvement in school activities and decisions and ensure regular communication with families through multiple formats.

- Parent Workshops/Tutorial Videos
- Dana FRAT members will host a series of parent nights or create tutorials on topics such as Canvas, Cyber Safety, and Literacy/Reading Resources. Some of these nights will be ran as a workshop event with parents having a hands-on experience and practice with programs on Chromebooks.
- The administration will also work with the PTSA to bring in informative documentaries or speakers that focus on middle school challenges such as managing social media and communicating with adolescents.

GOAL



5

Organizational Strength

Dana school will regularly evaluate and manage organization procedures and practices in order to maintain a strong fiscal position in support of advancing school site goals.

- A monthly budget review by the site admin with reports from the district business office.
- The annual creation of the Single Plan for Student Achievement, in collaboration with School Site Council.
- Dana is maintaining an ongoing spreadsheet to log and track ongoing expenditures, in collaboration with the front office staff.
- Maintain efficient and productive building operations.