



2017 BOND PROJECTS – BOARD UPDATE

Memorial High School

Spring Branch Independent School District

Stantec Project No. 214000633

December 31, 2020

1) PROJECT TEAM:

Owner:	Spring Branch ISD	Assoc. Supt. for Operations:	Travis Stanford
SBISD Project No.	67221	Project Manager:	Kris Drosche
Architect:	Stantec Architecture, Inc.	Partner-in-Charge:	Jennifer Henrikson
		Project Manager:	Mark Jackson

CM@Risk: Durotech

2) GENERAL SCOPE OF WORK:

Master Plan, new construction, and renovations for Memorial High School. The Master Plan will be broken out into two phases. Phase I is the current project funded and approved in the 2017 Bond Program. Phase II will be future work shown on the Master Plan.

Off-Site Transition:

Not Applicable

3) BOND PLAN PROJECT TIMELINE:

PROJECT ADVISORY TEAM	DECEMBER 2018 – DECEMBER 2019
MASTER PLAN	APRIL 2018 – JULY 2018
MASTER PLAN PHASE I	AUGUST 2018 – DECEMBER 2018
SCHEMATIC DESIGN	JANUARY – MARCH 2019
DESIGN DEVELOPMENT	APRIL – JUNE 2019
CONSTRUCTION DOCUMENTS	JULY – DECEMBER 2019
PERMIT RECEIVED EAST CAMPUS	DECEMBER 2019
PERMIT RECEIVED WEST CAMPUS	APPROX. MARCH 2020
BIDDING / BOARD APPROVAL	JANUARY – 2020
CONSTRUCTION PHASE	DECEMBER 2019 – APRIL 2022
OCCUPANCY	SUMMER 2022

Current Point

4) PROJECT STATUS OVERVIEW

Package #1 (East Campus); the Tennis Courts, Tennis Field House, and grass practice fields are complete and occupied. Package #2 (West Campus); the New Building is under construction. The Interior Renovations for Summer 2020 are complete. The Football Field replacement project is complete. The recent COVID-19 outbreak has delayed a few minor items but overall has not affected the critical path schedule so far.



5) PAST 2-4 WEEKS PROJECT HIGHLIGHTS / MILESTONES:

Package #1 (East Campus):

No current work, all complete

Western parking lot expansion will occur Summer/Fall 2021

Package #2 (West Campus) construction in progressing.

The summer 2020 renovations are complete (toilet rooms, painting, flooring, MEP, etc.)

Steel erection in Area C continues

Elevated slab concrete pours & mechanical penthouse

Mechanical duct work on going

Plumbing piping on going

Electrical conduit rough in and pull boxes

Sprinkler piping

Interior metal studs at electrical rooms

Exterior metal studs and sheathing on going

CMU block continues

Traffic light on Gaylord and Student Drive complete but not yet active

12/2; Project OAC meeting

12/8; BIM Coordination meeting

12/9; Low Voltage, Data, Cameras, etc. pre-construction meetings

12/9; Atrium stair installed

12/10; meeting with the PTA/Booster Club to discuss possible new items to fund

12/11; Mural tiles arrived and were sorted for a mockup

12/15; Level 5 mechanical penthouse concrete poured

12/15; BIM Coordination meeting

12/16; Project OAC meeting

12/17; Reviewed floor coating product with SBISD at the Katy Stadium

12/22; BIM Coordination meeting

12/24 – 12/31; Contractor worked to keep up with the project during the holiday break except on Christmas Day

COVID-19 has not yet caused a major disruption in construction activities or Stantec's ability to fulfill our responsibilities for this project. There have been minor adjustments for delayed construction materials. We continue to monitor the situation and will work with SBISD and Durotech to keep up with all work and maintain safe distances.

6) NEXT 2-4 WEEKS PROJECT HIGHLIGHTS / MILESTONES:

Stantec and consultants observing construction and attending the OAC and Pre-Install meetings
East Campus:

No new work until Summer/Fall 2021 (parking)

West Campus Main Building:

Complete major structural steel

Continue with elevated deck pours

Continue with MEP work

Continue with interior and exterior studs

Complete mockup wall

Start building insulation

Start roof work

Start interior drywall

7) **PHOTOGRAPHS:**



Railing mockup



Building mockup in progress



Long span truss staged on ground



Long span truss being installed



Plaza paving pour



North end of the building from service yard



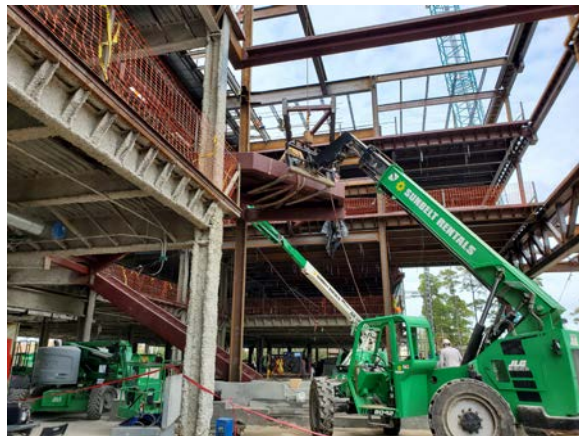
Level 3 after concrete pour



View from Level 4 at crane



Installing atrium stair



Installing atrium stair



Atrium stair



Completed field from new building



Level 5 mechanical penthouse slab pour



Level 3 spray fireproofing



Long span trusses installed in area C



Overall steel framing from atrium



Exterior metal studs (CFMF)



Overall west façade showing metal studs (CFMF)