



2017 BOND PROJECTS – BOARD UPDATE

Memorial High School

Spring Branch Independent School District

Stantec Project No. 214000633

January 31, 2021

1) PROJECT TEAM:

Owner:	Spring Branch ISD	Assoc. Supt. for Operations:	Travis Stanford
SBISD Project No.	67221	Project Manager:	Kris Drosche
Architect:	Stantec Architecture, Inc.	Partner-in-Charge:	Jennifer Henrikson
		Project Manager:	Mark Jackson

CM@Risk: Durotech

2) GENERAL SCOPE OF WORK:

Master Plan, new construction, and renovations for Memorial High School. The Master Plan will be broken out into two phases. Phase I is the current project funded and approved in the 2017 Bond Program. Phase II will be future work shown on the Master Plan.

Off-Site Transition:

Not Applicable

3) BOND PLAN PROJECT TIMELINE:

PROJECT ADVISORY TEAM	DECEMBER 2018 – DECEMBER 2019
MASTER PLAN	APRIL 2018 – JULY 2018
MASTER PLAN PHASE I	AUGUST 2018 – DECEMBER 2018
SCHEMATIC DESIGN	JANUARY – MARCH 2019
DESIGN DEVELOPMENT	APRIL – JUNE 2019
CONSTRUCTION DOCUMENTS	JULY – DECEMBER 2019
PERMIT RECEIVED EAST CAMPUS	DECEMBER 2019
PERMIT RECEIVED WEST CAMPUS	APPROX. MARCH 2020
BIDDING / BOARD APPROVAL	JANUARY – 2020
CONSTRUCTION PHASE	DECEMBER 2019 – APRIL 2022
OCCUPANCY	SUMMER 2022

Current Point

4) PROJECT STATUS OVERVIEW

Package #1 (East Campus); the Tennis Courts, Tennis Field House, and grass practice fields are complete and occupied. Package #2 (West Campus); the New Building is under construction. The Interior Renovations for Summer 2020 are complete. The Football Field replacement project is complete. The recent COVID-19 outbreak has delayed a few minor items but overall has not affected the critical path schedule so far.



5) PAST 2-4 WEEKS PROJECT HIGHLIGHTS / MILESTONES:

Package #1 (East Campus):

- Working on punchlist items related to the grass
- Western parking lot expansion will occur Summer/Fall 2021

Package #2 (West Campus) construction in progressing.

- The summer 2020 renovations are complete (toilet rooms, painting, flooring, MEP, etc.)
- Steel erection is complete
- Elevated slabs have been poured except area NC4
- Mechanical duct work on going
- Plumbing piping on going
- Electrical conduit rough in and pull boxes
- Sprinkler piping
- Interior metal studs and drywall on going
- Exterior metal studs and sheathing on going
- CMU block continues
- LWIC roofing began

- 1/5; BIM Coordination meeting
- 1/7; Meeting with SBISD to discuss move-in schedules
- 1/12; elevated deck concrete pour
- 1/12; BIM Coordination meeting
- 1/13; OAC Meeting
- 1/15; elevated deck concrete pour
- 1/19; BIM Coordination meeting
- 1/21; Mockup panel review
- 1/21; Reviewed PTA/Booster Club items
- 1/22; On-site walk through for security camera locations
- 1/25; LWIC rood deck pour
- 1/25; Review exterior lighting (at night)
- 1/26; Review tile mural art mockup
- 1/27; OAC meeting
- 1/28; Area L concrete pour

COVID-19 has not yet caused a major disruption in construction activities or Stantec's ability to fulfill our responsibilities for this project. There have been minor adjustments for delayed construction materials. We continue to monitor the situation and will work with SBISD and Durotech to keep up with all work and maintain safe distances.

6) NEXT 2-4 WEEKS PROJECT HIGHLIGHTS / MILESTONES:

Stantec and consultants observing construction and attending the OAC and Pre-Install meetings
East Campus:

- Complete remaining punch list items related to the grass field

West Campus Main Building:

- Complete elevated deck pours
- Continue with LWIC roof deck pours
- Continue with MEP work
- Continue with interior studs and drywall
- Complete mockup wall
- Start building air barrier and insulation
- Terrazzo flooring



Exterior stone on mockup wall

7) PHOTOGRAPHS:



Exterior west façade



Roadway speed humps updated



CMU work in area NA1



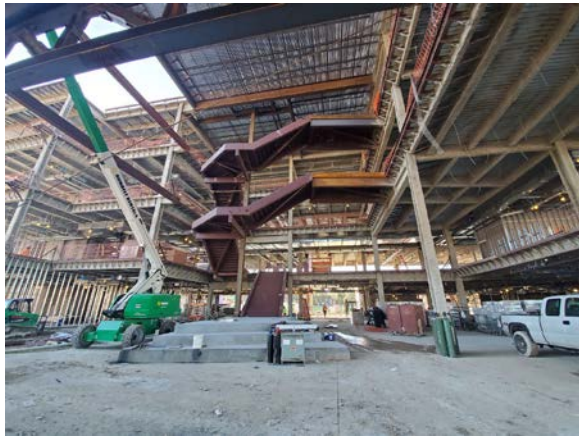
Sheathing with batt insulation at the parapets



Area NC3 deck pour prep



Overall Area NC



Atrium stair



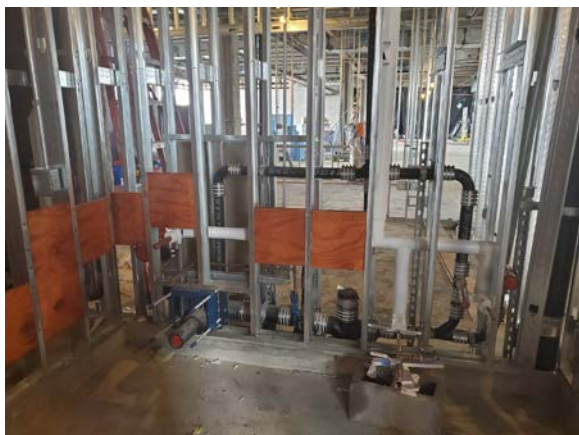
Roof over area NA



Area NC3 deck poured



Mockup panel with replaced clips



Stud framing and blocking in a toilet room



Overall Area NA (east façade)



Area NA3 drywall at science labs



Area NA1 terrazzo at servery



Overall west elevation



Area NA1 terrazzo at servery



Atrium stair from level 3



Mechanical enclosure with equipment