



## 2017 BOND PROJECTS – BOARD UPDATE

### Memorial High School

Spring Branch Independent School District

Stantec Project No. 214000633

October 31, 2020

#### 1) PROJECT TEAM:

Owner:	Spring Branch ISD	Assoc. Supt. for Operations:	Travis Stanford
SBISD Project No.	67221	Project Manager:	Kris Drosche
Architect:	Stantec Architecture, Inc.	Partner-in-Charge:	Jennifer Henrikson
		Project Manager:	Mark Jackson

CM@Risk: Durotech

#### 2) GENERAL SCOPE OF WORK:

Master Plan, new construction, and renovations for Memorial High School. The Master Plan will be broken out into two phases. Phase I is the current project funded and approved in the 2017 Bond Program. Phase II will be future work shown on the Master Plan.

##### Off-Site Transition:

Not Applicable

#### 3) BOND PLAN PROJECT TIMELINE:

PROJECT ADVISORY TEAM	DECEMBER 2018 – DECEMBER 2019
MASTER PLAN	APRIL 2018 – JULY 2018
MASTER PLAN PHASE I	AUGUST 2018 – DECEMBER 2018
SCHEMATIC DESIGN	JANUARY – MARCH 2019
DESIGN DEVELOPMENT	APRIL – JUNE 2019
CONSTRUCTION DOCUMENTS	JULY – DECEMBER 2019
PERMIT RECEIVED EAST CAMPUS	DECEMBER 2019
PERMIT RECEIVED WEST CAMPUS	APPROX. MARCH 2020
BIDDING / BOARD APPROVAL	JANUARY – 2020
<b>CONSTRUCTION PHASE</b>	<b>DECEMBER 2019 – APRIL 2022</b>
OCCUPANCY	SUMMER 2022

Current Point

#### 4) PROJECT STATUS OVERVIEW

Package #1 (East Campus); the Tennis Courts and Tennis Field House are complete. The new grass practice fields are in the “grow-in” period. Package #2 (West Campus); the New Building, and Athletic Field Events are under construction. The Interior Renovations for Summer 2020 are complete. The Football Field replacement project is complete. The recent COVID-19 outbreak has delayed a few minor items but overall has not affected the critical path schedule so far.



**5) PAST 2-4 WEEKS PROJECT HIGHLIGHTS / MILESTONES:**

Package #1 (East Campus):

- Tennis Courts and Field House are complete
- SBISD has moved in
- Stantec has re-walked the punchlist
- Grass fields are installed and are in the “grow-in” period
- Western parking lot expansion will occur next summer 2021

Package #2 (West Campus) construction in progressing.

- The summer 2020 renovations are complete (toilet rooms, painting, flooring, MEP, etc.)
- New west driveway is complete and striped
- New building foundations and slab on grades are complete
- Steel erection began in Area B and is moving towards Area A
- Created campus room numbering system with the principal
- Site fencing around field events is complete
- Grass installed and growing around the field events
- Almost complete with submittals and shop drawings

10/6; BIM Coordination meeting

10/7; Project OAC Meeting on site

10/7; On site review of field events site lighting

10/13; Re-walk Tennis building punchlist

10/13; BIM coordination meeting

10/15; Regular construction observations

10/20; Review of PTA/Booster Club items

10/20; BIM Coordination meeting

10/21; Project OAC Meeting on site

10/27; BIM coordination meeting

10/28; Regular construction observations

10/30; Installed additional safety stripes on driveway speed humps

COVID-19 has not yet caused a major disruption in construction activities or Stantec’s ability to fulfill our responsibilities for this project. There have been minor adjustments for delayed construction materials. We continue to monitor the situation and will work with SBISD and Durotech to keep up with all work and maintain safe distances.

**6) NEXT 2-4 WEEKS PROJECT HIGHLIGHTS / MILESTONES:**

Stantec and consultants observing construction and attending the OAC and Pre-Install meetings

East Campus:

- Grass growing in
- Install football goal posts

West Campus:

- Steel erection in Area A and Area C
- Slab deck pours on upper levels
- Duct work hangars
- Electrical conduit rough-in
- Install discus cage
- Install site lights at field events

7) **PHOTOGRAPHS:**



Slab pours complete



Saw cutting slabs



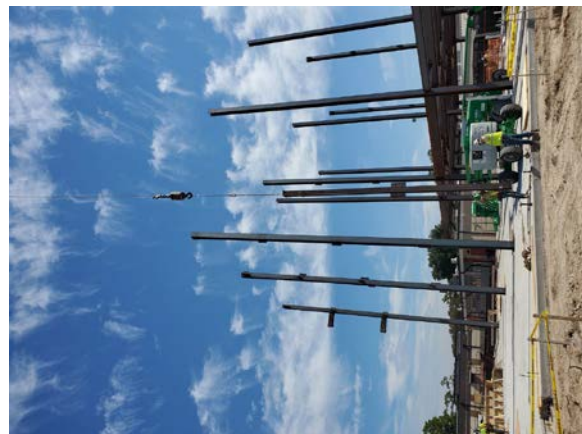
New sidewalk to existing neighborhood park



Steel erection Area B



Overall slab Area A



Steel erection Area B



Steel staging in Area C



Forming atrium stair platform



Field events netting



East campus grass growing in



Tennis building complete



Primer on long jump runways



Steel erection and detailing



Elevator pits



Field events areas (Discus)



Completed long jump / pole vault runways



Framing for mock-up wall



Overall steel Area B and partial Area A