



## 2017 BOND PROJECTS – BOARD UPDATE

### Landrum MS Replacement

Spring Branch Independent School District

Stantec Project No. 214000653

January 31, 2021

#### 1) PROJECT TEAM:

Owner:	Spring Branch ISD	Assoc. Supt. For Operations:	Travis Stanford
SBISD Project No.	67213	Project Manager:	Kris Drosche
Architect:	Stantec Architecture, Inc.	Partner-in-Charge: Project Manager:	Jennifer Henrikson Gary Dunn
CM@Risk:	Durotech		

#### 2) GENERAL SCOPE OF WORK:

Replacement of Landrum Middle School with new 1100 student campus on existing site. Scope includes demolition of existing campus, added drainage detention, construction of new building and associated site work.

##### **Off-Site Transition:**

Conceptual studies have revealed on site transition is feasible.

#### 3) BOND PLAN PROJECT TIMELINE:

PROJECT ADVISORY TEAM	JANUARY 2019 – NOVEMBER 2019
CM@R SELECTION	MARCH 2019
CONCEPTUAL SITE STUDY	AUGUST 2018 – DECEMBER 2018
SCHEMATIC DESIGN	JANUARY 2019 – MARCH 2019
DESIGN DEVELOPMENT	MARCH 2019 – MAY 2019
CONSTRUCTION DOCUMENTS	MAY 2019 – AUGUST 2019
PERMIT RECEIVED	MARCH 30, 2020
BIDDING / BOARD APPROVAL	SEPTEMBER 2019 – NOVEMBER 2019
<b>CONSTRUCTION PHASE</b>	<b>DECEMBER 2019 – OCTOBER 2021</b>
OCCUPANCY	JUNE 2021 – AUGUST 2021

← Current Point

#### 4) PROJECT STATUS OVERVIEW

Project is in Construction Phase.

#### 5) PAST 2-4 WEEKS PROJECT HIGHLIGHTS / MILESTONES:

- Underground storm pipe installation complete for Phase I
- Exterior Masonry nearing completion
- Exterior glazing systems nearing completion
- Interior glazing systems ongoing



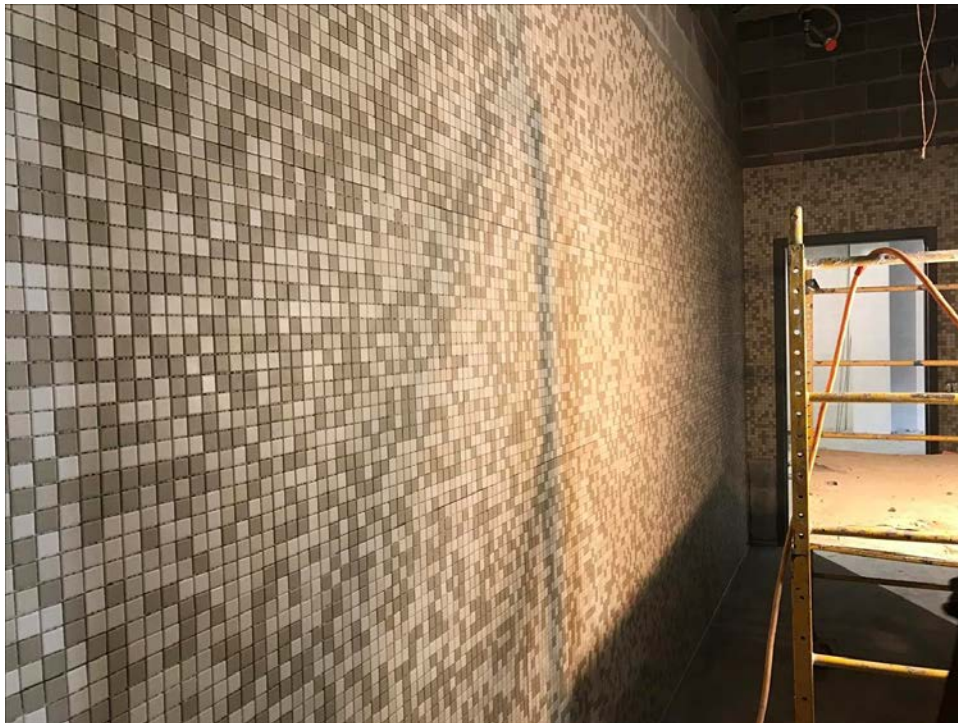
- Interior Drywall complete Areas A-D
- Ceiling Grid installation
- MEP and Data Cabling installations ongoing thru out
- Kitchen walk in cooler/freezer installation
- Classroom casework installation Areas A-C
- Terrazzo flooring nearing completion
- Building permanent power now active
- Interior wall finishes underway

**6) NEXT 2-4 WEEKS PROJECT HIGHLIGHTS / MILESTONES:**

- Complete Exterior Masonry
- Complete Terrazzo flooring
- Complete interior wall framing and drywall all areas
- Continue Ceiling installations
- Continue Exterior glazing systems
- Continue MEP and Data Cabling installations
- Continue Casework installation
- Continue Kitchen Equipment installation
- Continue Interior glazing system installation
- Continue Interior wall finishes

**7) PHOTOGRAPHS:**

Wall tile in Locker Room shower rooms



View down to CTE Flex Area from 3<sup>rd</sup> floor



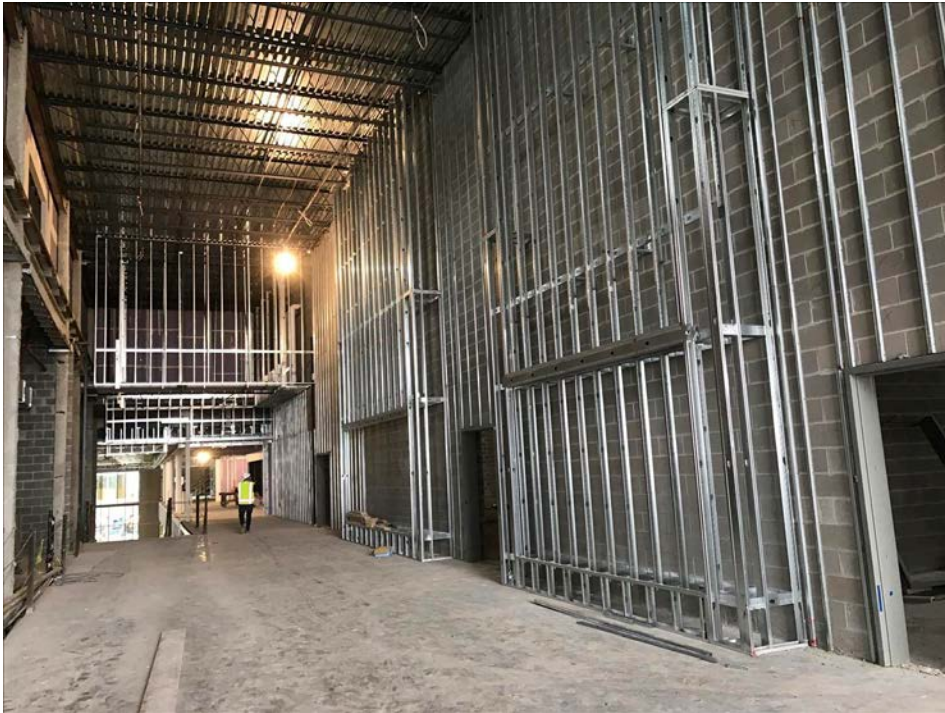
Science classroom interior







Corridor outside gyms

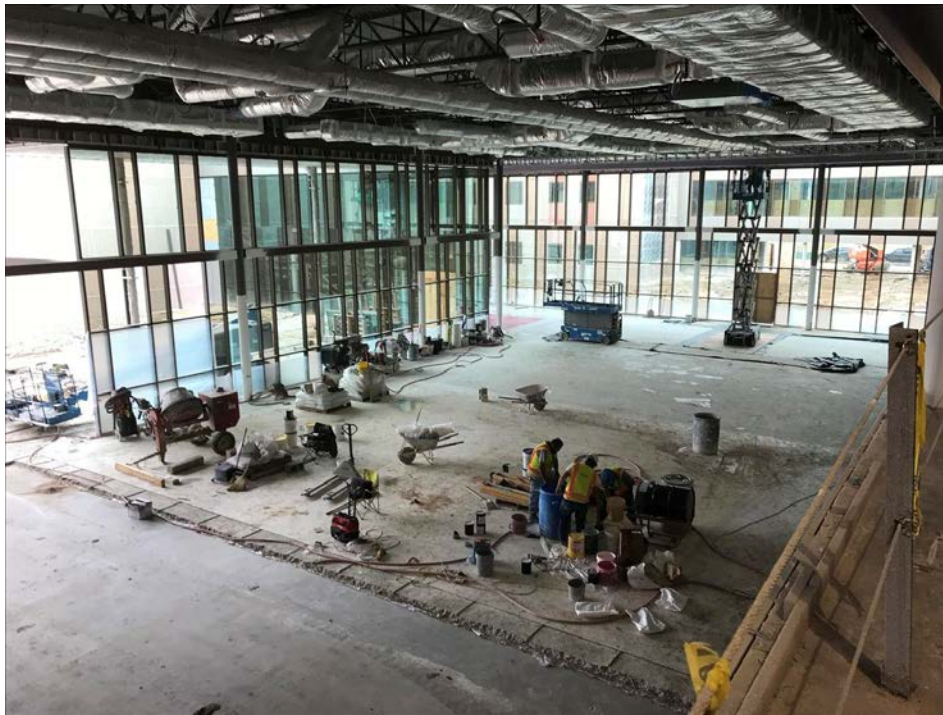


Interior of Gym





Dining Interior from 2<sup>nd</sup> floor walkway, Terrazzo flooring install ongoing



Auditorium Entry viewed from 2<sup>nd</sup> floor Admin windows







Events Courtyard. 3 recesses in brick to receive graphic tiling



View down Learning Stair to Dining from 2<sup>nd</sup> floor

