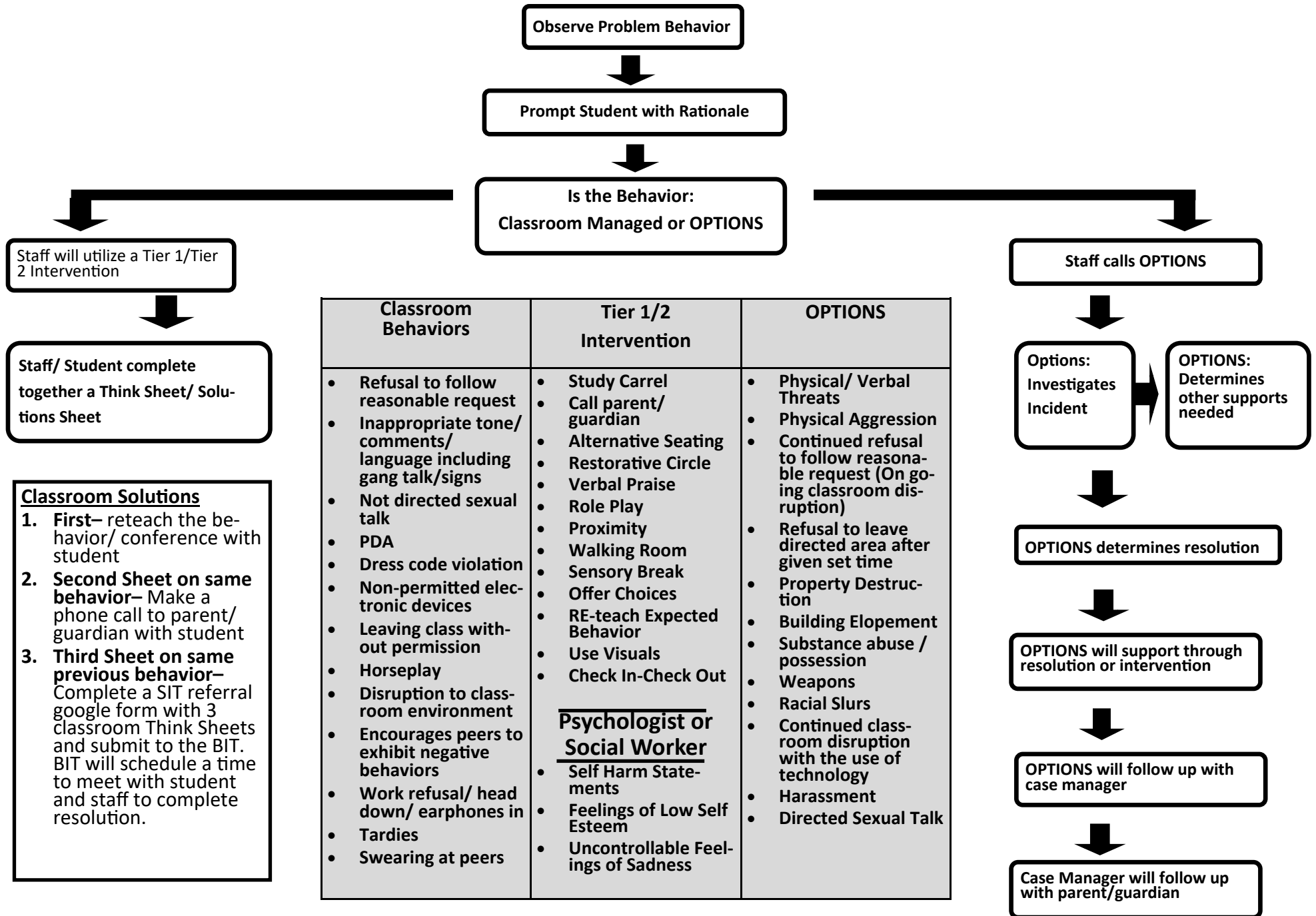


OEC Behavior Decision Flow Chart



Observe Problem Behavior

Prompt Student with Rationale

Is the Behavior:
Classroom Managed or OPTIONS

Staff will utilize a Tier 1/Tier 2 Intervention

Staff/ Student complete together a Think Sheet/ Solutions Sheet

- Classroom Solutions**
- First**– reteach the behavior/ conference with student
 - Second Sheet on same behavior**– Make a phone call to parent/ guardian with student
 - Third Sheet on same previous behavior**– Complete a SIT referral google form with 3 classroom Think Sheets and submit to the BIT. BIT will schedule a time to meet with student and staff to complete resolution.

Classroom Behaviors	Tier 1/2 Intervention	OPTIONS
<ul style="list-style-type: none"> Refusal to follow reasonable request Inappropriate tone/ comments/ language including gang talk/signs Not directed sexual talk PDA Dress code violation Non-permitted electronic devices Leaving class without permission Horseplay Disruption to classroom environment Encourages peers to exhibit negative behaviors Work refusal/ head down/ earphones in Tardies Swearing at peers 	<ul style="list-style-type: none"> Study Carrel Call parent/ guardian Alternative Seating Restorative Circle Verbal Praise Role Play Proximity Walking Room Sensory Break Offer Choices RE-teach Expected Behavior Use Visuals Check In-Check Out <p>Psychologist or Social Worker</p> <ul style="list-style-type: none"> Self Harm Statements Feelings of Low Self Esteem Uncontrollable Feelings of Sadness 	<ul style="list-style-type: none"> Physical/ Verbal Threats Physical Aggression Continued refusal to follow reasonable request (On going classroom disruption) Refusal to leave directed area after given set time Property Destruction Building Elopement Substance abuse / possession Weapons Racial Slurs Continued classroom disruption with the use of technology Harassment Directed Sexual Talk

Staff calls OPTIONS

Options: Investigates Incident

OPTIONS: Determines other supports needed

OPTIONS determines resolution

OPTIONS will support through resolution or intervention

OPTIONS will follow up with case manager

Case Manager will follow up with parent/guardian