



2020-2021

South Texas ISD

Flexible Learning Initiative



*Roadmap to
a safe return*

A COVID-19 Plan of Action

Message from the Superintendent

Marco Antonio Lara, Jr., Ed.D.



Dear STISD Family,

We are finalizing our preparations for the 2020-2021 school year and looking forward to welcoming our district community back later this month.

There is no question that the start of this school year will be different from years before. The pandemic has driven schools throughout our area, our state, our nation, and the world to take a closer look at operations and how we can adapt and evolve in an effort to keep our district communities safe.

At STISD, the safety and well-being of students and staff have always been priority, and we continue to prioritize them in our plans for the upcoming school year. As we continue to battle the coronavirus, the STISD Board of Directors and administration, along with our sister school districts and local health officials, are working tirelessly to combat the day-to-day challenges that this virus has brought to our communities. We are truly “stronger together,” and this collaboration has allowed for unity and the sharing of ideas to strengthen our back-to-school plans.

We developed an STISD “Safe Return to Work and School Plan” that is guided by two key principles: 1) Safety of all in their work and learning environment, and 2) Clear communication throughout the crisis. Our plan encompasses health and safety guidelines and processes and procedures that we will follow to better ensure safety of our district community this school year. This plan is a working document, and we will continue to update it as circumstances, knowledge and guidance change.

The key to the success of this plan is that we all adhere to these guidelines both inside and outside of the workplace. Doing so will help keep ourselves and each other safe.

I know you likely all have many questions about what this school year will look like. This document should help answer some of those questions, and you can expect additional information from your campus as we move closer to the first day of school. However, if you have additional questions or concerns, please do not hesitate to reach out.

Thank you for your partnership in this mission.

A handwritten signature in black ink, appearing to read 'MAL', which is the signature of Marco Antonio Lara, Jr.

Marco Antonio Lara, Jr., Ed.D.
Superintendent of Schools

TABLE OF CONTENTS

SECTION 1: School Health Guidelines

- General Sanitary Practices- P. 4
- Definition of Close Contact- P. 5
- Stay-at-Home Period for Close Contacts of Individuals Who...
Tested Positive- P. 5
- Student Health- P. 6-7
- Employee Health- P. 7
- Face Coverings- P. 8-9
- Campus Sanitization & Preparedness- P. 9
- Role of Campus Nursing Staff- P. 9-10
- Classroom Procedures- P. 9
- Building Procedures: Use of Non-Classroom Spaces- P. 10
 - Gymnasiums- P. 10
 - Campus Hallways- P. 10
 - Cafeteria- P. 10
 - Library- P. 10
- Respond: Practices to Respond to a Test-Confirmed Case in School- P. 11
 - Required Actions if Individuals with Test-Confirmed Cases have been in school - P. 11
- Individuals Confirmed or Suspected with COVID-19- P. 11-12
- State Reporting Regarding COVID-19- P. 12
- Daily Home Screening Checklist- P. 12
- Identifying Possible COVID-19 Cases on Campus- P. 12

SECTION 3: Instructional Plan

- General Information- P. 15
- On-Campus Instruction- P. 15-16
- Virtual Learning- P. 16
- Notice Regarding Recording Virtual Classroom Sessions- P. 17
- Sample Schedule for Virtual Learning- P. 17
- Blended Learning- P. 17-18
- Sample Schedule for all three Instructional Settings- P. 17-18
- Technology Equipment- P. 18-19
- Specialized Programs- P. 19
- Staff Expectations- P. 19
- Student Expectations and Agreements- P. 19
- Attendance- P. 19-20
- Grading- P. 20
- Tutorials- P. 20
- Parent Support in Virtual & Blended Learning- P. 20
- Social and Emotional Resources- P. 20-21
- Updating of Contact Information and Preferences- P. 21

SECTION 2: Situational Safety Guidelines

- Transportation- P. 13
 - School Buses- P. 13
- Visitors & Deliveries- P. 13
- Arrival/Dismissal/Transitions- P. 13-14
 - Arrival- P. 13-14
 - Dismissal- P. 14
 - Transitions- P. 14
- Child Nutrition/Meal Service- P. 14-15

SECTION 4: Additional Guidelines

- Registration and New Student Enrollment- P. 21
- Scheduling, Open House, and Meet the Teacher- P. 21
- Extracurricular/Non-Academic Activities- P. 21-22
- Situational Awareness and Response Teams (SARTS)- P. 22-24
- Public Health Considerations- P. 24
 - PROVIDE NOTICE: Parental and Public Notes- P. 24
- Additional Resources- P. 25-27
 - COVID-19 Screening Flow Chart- P. 25
 - COVID-19 Wellness Questionnaire- P. 26
 - STISD 2020-2021 A/B Calendar- P. 27

**Last updated April 1, 2021.
Changes + additions are
marked in red throughout
the document.**

Section 1: School Health Guidelines

STISD has been busy throughout the spring and summer preparing for the 2020-2021 school year and our return to campuses and offices this fall. When our staff and students return to our facilities, they will find a “new normal,” consisting of practices, procedures and precautions in place to better ensure the health and safety of our district community.

In planning for this school year, we researched guidelines, recommendations and best practices and found ways to embed these into our day-to-day practices at STISD. The goal of this plan is to provide the safest learning and working environment possible. Our “Safe Return to Work and School Plan” is guided by two principles:

- Safety of all in their work and learning environment
- Clear communication throughout the crisis

The following plan details the precautionary measures in place throughout the district and outlines action steps for addressing a confirmed case of COVID-19 in any one of our students or staff. This document outlines practices and procedures that will be implemented district wide on all of our campuses and departments in an effort to reduce the likelihood of a coronavirus outbreak and to control and contain it, should it occur. This is a working document, and we will continue to make revisions, as necessary, based upon changing conditions. Any changes to the plan will be shared with you.

General Sanitary Practices

- To encourage students, teachers, staff, and campus visitors to sanitize and/or wash hands frequently, campuses will have hand sanitizer at each entrance, and classrooms will provide disinfecting stations.
- Students will wash their hands and use hand sanitizer as many times as needed per day.
- On the first day a student attends school on campus, the campus will provide instruction on appropriate hygiene practices and other mitigation practices adopted in the local school system.
- Staff will encourage students to wash their hands for at least 20 seconds multiple times throughout the day, as well as after they use the restroom and before eating meals. Each campus will stagger these times so as to limit overcrowding at the sinks.
- Campuses will take opportunities to teach students good handwashing techniques.
- Students, teachers, staff, and campus visitors will be encouraged to cover coughs and sneezes with a tissue, and if not available, covered in their elbows. Used tissues should be thrown in the trash, and hands should be washed immediately with soap and water for at least 20 seconds. If soap and water is not available, hand sanitizer should be used.
- Campuses will institute more frequent cleaning practices, including additional cleaning in key areas by custodial staff, as well as provide the opportunity for children to clean their own spaces before and after they are used, in ways that are safe and developmentally appropriate.
- Additionally, working together, staff, with the assistance of custodial staff, will take extra precautions in cleaning and disinfecting surfaces that are commonly touched throughout the school day. This would include objects such as door handles, common tables/desks, shared supplies such as art supplies, and high touch devices such as shared laptops or tablets.
- The district will follow guidance from the Center for Disease Control (CDC) to clean buildings to prevent the spread of COVID-19. Products will be stored safely, and all necessary precautions will be taken to avoid using harmful cleaning products near children.
- Restrooms and any other common areas will be cleaned multiple times throughout the day to maximize sanitary conditions.
- Water fountains that allow for drinking directly from them will not be available. Students and staff members are asked to bring their own refillable water bottles to stay hydrated throughout the day.

Section 1: School Health Guidelines

Definition of Close Contact

- This document refers to “close contact” with an individual who is test-confirmed to have COVID-19. The definition of close contact is evolving with our understanding of COVID-19, and individual scenarios should be determined by an appropriate public health agency. In general, close contact is defined as:
 - a. being directly exposed to infectious secretions (e.g., being coughed on); or
 - b. being within 6 feet for a total of approximately 15 minutes throughout the course of a day ; however, additional factors like case/contact masking (i.e., both the infectious individual and the potential close contact have been consistently and properly masked), ventilation, presence of dividers, **vaccination status, prior infection status**, and case symptomology may affect this determination.

Either (a) or (b) defines close contact if it occurred during the infectious period of the case, defined as two days prior to symptom onset to 10 days after symptom onset. In the case of asymptomatic individuals who are test-confirmed with COVID-19, the infectious period is defined as two days prior to the confirming test and continuing for 10 days following the confirming test.

What counts as close contact?

- You were within 6 feet of someone who has COVID-19 for a total of 15 minutes or more
- You provided care at home to someone who is sick with COVID-19
- You had direct physical contact with the person (hugged or kissed them)
- You shared eating or drinking utensils
- They sneezed, coughed, or somehow got respiratory droplets on you

Quarantine is used to keep someone who might have been exposed to COVID-19 away from others. Quarantine helps prevent spread of disease that can occur before a person knows they are sick or if they are infected with the virus without feeling symptoms. People in quarantine should stay home, separate themselves from others, monitor their health, and follow directions from their state or local health department.

Stay-at-Home Quarantine Period for Close Contacts of Individuals Who Tested Positive

For individuals who are close contacts to individuals who tested positive, a 14-day stay-at-home period was previously advised by the CDC based on the incubation period of the virus.

As of December 2, 2020, the CDC amended their guidance to allow two shorter options for the stay-at-home period. Based on current CDC guidance, the stay-at-home period can end for individuals experiencing no symptoms:

- On Day 10 after the last close contact exposure without testing,
- On Day 7 after the last close contact exposure and after receiving a negative test result (administered at least five days after the last close contact.) The negative test result will be submitted to the school nurse for students or HR for staff.

If individuals return to school from these shorter stay-at-home windows, they should regularly monitor themselves for symptoms to ensure they remain symptom-free and take appropriate precautions for the duration of the 14-day incubation period.

Are there any exceptions to the quarantine process?

Additionally, the CDC updated guidance on March 8, 2021, to indicate that:

- A vaccinated individual does not need to stay at home following close contact exposure to a test-confirmed individual if the following conditions are true:
 - The exposed individual is fully vaccinated (at least two weeks have passed since receiving the second dose of a two-dose vaccine or the first dose of a single-dose vaccine)
 - Have not experienced any COVID-19 symptoms following close contact exposure to a test-confirmed individual.
- Individuals who have tested positive for COVID-19 within the past 3 months and recovered do not have to stay

Section 1: School Health Guidelines

Are there any exceptions to the quarantine process? Cont.

at home or get tested again, as long as they do not develop new symptoms.

- Individuals who develop symptoms again within 3 months of their first bout of COVID-19 may need to be tested again if there is no other cause identified for their symptoms.

Steps to Take During Stay-at-Home Quarantine Period

- Stay home and monitor your health
- Stay home for the advised quarantine duration.
- Watch for fever (100.0°F), cough, shortness of breath, or other symptoms of COVID-19
- If possible, stay away from others, especially people who are at higher risk for getting very sick from COVID-19

Student Health

- Parents are responsible for ensuring their child(ren) are screened daily before leaving home for school or the bus stop. This screening should consist of parents checking their child's temperature and identifying symptoms of COVID-19 prior to leaving home for school. In evaluating whether an individual has symptoms consistent with COVID-19, the following guideline will be used: Has student recently begun experiencing any of the following symptoms in a way that is not normal for them? Symptoms of COVID-19 include the following: fever/chills, cough, shortness of breath or difficulty breathing, fatigue, muscle/body aches, headache, new loss of taste or smell, sore throat, congestion or runny nose, nausea or vomiting, and diarrhea.
- Any child with a fever at or above 100.0 Fahrenheit (as established by the Texas Department of Health) or experiencing COVID-19 symptoms should not report to campus or the bus stop. If you are sick, stay home and notify your campus for instruction.
- Additionally, if the child has come into close contact with an individual who is test-confirmed with COVID-19, the parent/guardian and child should make contact with the campus, who will provide the parent/guardian and child with further instructions regarding the stay-at-home period for close contacts of individuals who tested positive. (See Stay-at-Home Quarantine Period for Close Contacts of Individuals Who Tested Positive section on pg. 5 for details.)
- All students will be instructed on methods to protect themselves and others from COVID-19 at school.
- All students should practice appropriate social distancing, hand hygiene and respiratory etiquette (i.e. cough/sneeze into arm, cover mouth with tissue, etc.).
- STISD will train all students in self-sanitization techniques and, where applicable, schedule hand washing times throughout the day. When hand washing is not feasible, students will utilize hand sanitizer as needed.
- All students will be required to undergo a screening for COVID-19 symptoms when entering their campus or boarding the bus each day, as well as any time during the day that a student leaves and comes back to the campus. Screening will include the taking of the student's temperature at designated entrances to buildings or the bus. Screening may be done several times a day. Students exhibiting COVID-19 symptoms or with a temperature at or above 100.0 Fahrenheit will not be allowed to enter the building or bus and will be sent home with their parent. The parent must remain with child upon arrival to school until cleared/checked in.
- If a student starts feeling symptomatic during the day, the student will immediately report their condition to the campus nurse and/or administrator for secondary screening.
- Screening Questionnaire Information
 - When asking individuals if they have symptoms for COVID-19, school systems must only require the individual to provide a "Yes" or "No" to the overall statement that they are symptomatic for COVID-19, as opposed to asking the individual for specific symptom confirmation. School systems are not entitled to collect information during screening on the specific health information of an individual beyond that they are symptomatic.

Section 1: School Health Guidelines

Student Health Cont.

- Once it is determined that individuals who responded “Yes” to either of these questions have met the criteria for re-entry, school systems must destroy those individuals’ responses.
- STISD will not allow any individual who fails the screening criteria to enter any facility or bus until they are cleared using the “re-entry” guidelines, as defined in the Individuals Confirmed or Suspected with COVID-19 section of this document.
- All STISD students receiving instruction on campus will have a desk shield available. The campus will have sanitation practices throughout the school day to sanitize student desk shields.

Employee Health

- All employees must conduct a self-screening daily before leaving home for work. This screening should consist of checking their temperature and identifying symptoms of COVID-19 prior to leaving home for school. In evaluating whether an individual has symptoms consistent with COVID-19, the following guideline will be used: Has the individual recently begun experiencing any of the following symptoms in a way that is not normal for them? Symptoms of COVID-19 include the following: fever/chills, cough, shortness of breath or difficulty breathing, fatigue, muscle/body aches, headache, new loss of taste or smell, sore throat, congestion or runny nose, nausea or vomiting, and diarrhea.
- Any employee with a fever at or above 100.0 Fahrenheit (as established by the Texas Department of Health) or experiencing COVID-19 symptoms should not report to work. These employees must contact their supervisor to report they will be out.
- Additionally, if the employee has come into close contact with an individual who is test-confirmed with COVID-19, the employee should make contact with Human Resources, who will provide the employee with instructions regarding the stay-at-home period for close contacts of individuals who tested positive. (See Stay-at-Home Quarantine Period for Close Contacts of Individuals Who Tested Positive section on pg. 5 for details.)
- All employees will also have their temperatures taken and be screened by the Screening Team (to be determined by principal or supervisor) for COVID-19 symptoms at the entrance of their campus or department each day. The screening will consist of the following:
 - Station 1: Temperature (team member)
 - Station 2: Hand Sanitizer (team member)
 - Station 3: Questions by Nurse (Nurse)
 - Station 4: Admit to campus (team member)
- Screening Questionnaire Information
 - When asking individuals if they have symptoms for COVID-19, school systems must only require the individual to provide a “Yes” or “No” to the overall statement that they are symptomatic for COVID-19, as opposed to asking the individual for specific symptom confirmation. School systems are not entitled to collect information during screening on the specific health information of an individual beyond that they are symptomatic.
 - Once it is determined that individuals who responded “Yes” to either of these questions have met the criteria for re-entry, school systems must destroy those individuals’ responses.
 - If an employee starts feeling symptomatic during the day, the employee will immediately report their condition to the nurse, who will walk them through next steps.
- STISD will not allow any individual who fails the screening criteria to enter any facility or bus until they are cleared using the “re-entry” guidelines, as defined in the Individuals Confirmed or Suspected with COVID-19 section of this document.
- All employees shall use, at a minimum, non-medical grade face coverings, covering their nose and mouth. STISD will issue a reusable face shield to each employee. It will be the employee’s responsibility to disinfect the face shield and maintain it for their use.

Section 1: School Health Guidelines

Face Coverings

- Following federal, state and local mandates and guidance from the Center for Disease Control, as well as the American Academy of Pediatrics, the use of non-medical grade face coverings will be required of all students, staff and visitors in all STISD facilities and on buses.
- Any individual arriving on campus during the instructional day will be required to wear a face covering in order to gain access to the building.
- **Schools must comply with the following requirements from TEA:**
 - Every student, teacher, or staff member shall wear a mask over the nose and mouth when inside a school building, school facility, facility used for school activities, or when in an outdoor space on school property or used for school activities, wherever it is not feasible to maintain six feet of social distancing from another person not in the same household; provided, however, that this mask requirement does not apply to the following:
 - Any person younger than 10 years of age, except where a school system determines it is developmentally appropriate;
 - Any person with a medical condition or disability that prevents wearing a mask;
 - Any person while the person is consuming food or drink, or is seated in a dining area to eat or drink;
 - Any person while the person is: (a) exercising outdoors or engaging in physical activity outdoors; and (b) maintaining a safe distance from other people not in the same household; or
 - Any person while the person is giving a speech for a broadcast or to an audience.
 - The above mask-wearing requirements do not apply to any school system that was exempted from the face covering requirements of Executive Order GA-29 during its effect due to a county judge attestation filed with the Texas Division of Emergency Management.
 - The governing board of a school system may modify or eliminate by formal action the above mask-related requirements.
- In addition to the mask-wearing requirements listed above, school systems may require the use of masks or face shields for adults or students for whom it is developmentally appropriate.
- It may be impractical for students to wear masks while participating in some non-UIL athletic or other extracurricular activities. When it is impractical for students to wear masks during those activities, schools must require students, teachers, staff, and visitors to wear masks when entering and exiting facilities and practice areas and when not actively engaging in those activities. Schools may, for example, allow students who are actively exercising to remove masks, as long as they maintain at least six feet of distance from other students, teachers, and staff who are not wearing masks. However, schools must require students, teachers, and staff to wear masks as they arrange themselves in positions that will allow them to maintain safe distancing.
- School administration or staff members will be stationed at entry doors to each campus to remind students to wear face coverings prior to entering the building and bus. In instances where a reusable mask belonging to a student or staff member is lost or forgotten, a disposable mask will be provided.
- For outdoor activities (such as PE classes), masks will not be required, but physical distancing will be enforced.
- Masks are required during all student and staff transitions, whether they occur outside or inside.
- Acceptable face coverings include non-medical and medical grade disposable face masks, and cloth face coverings (worn over the nose and mouth). Masks with valves/vents are not acceptable face coverings because they create micro particles that spread droplets easily, while gaiters and bandanas are not acceptable face coverings due to the loose weave of fabric and openings under the chin. Full-face shields may be used in conjunction with a mask to protect eyes, nose, and mouth.
- Students and staff members are asked to bring their own masks that align with the face covering requirements

Section 1: School Health Guidelines

Face Coverings Cont.

of STISD. Any mask deemed inappropriate will not be permitted, and a disposable mask will be provided. Staff members will be provided with a reusable face shield but may also wear a mask with it, if they so choose. It will be the employee's responsibility to disinfect the face shield and maintain it for their use.

- All STISD students receiving instruction on campus will have available a desk shield. The campus will have sanitation practices throughout the school day to sanitize student desk shields.

Campus Sanitization & Preparedness

- All STISD campuses will be equipped with desk shields (sneeze guards) and other dividers and plexiglass coverings to provide protection.
- Additional sanitization stations will be available at campus entrances, within classrooms, and at other locations throughout the building to ensure they are easily accessible.
- All restrooms and other common areas will be cleaned and sanitized frequently throughout the day and at the end of each day to maximize sanitary conditions.
- Campuses will institute more frequent cleaning practices, including additional cleaning in key areas by custodial staff, as well as provide the opportunity for children to clean their own spaces before and after they are used, in ways that are safe and developmentally appropriate.
- Additionally, working together, staff, with the assistance of custodial staff, will take extra precautions in cleaning and disinfecting surfaces that are commonly touched throughout the school day. This would include objects such as door handles, common tables/desks, shared supplies such as art supplies, and high touch devices such as shared laptops or tablets.
- The district will follow guidance from the Center for Disease Control (CDC) to clean buildings to prevent the spread of COVID-19. Products will be stored safely, and all necessary precautions will be taken to avoid using harmful cleaning products near children.

Role of Campus Nursing Staff

- STISD nursing staff will focus on preparing for, responding to, and recovering from communicable diseases in the workplace. These staff members will be training all staff in the measures of infection control and disease outbreak containment.
- The nurses will lead and coordinate the Screening Team on campus.
- In the event that an individual who has been in a school or district office is test-confirmed to have COVID-19, the STISD nurses will work alongside campus and district administration to notify the local health department, in accordance with applicable federal, state and local laws and regulations, including confidentiality requirements of the Americans with Disabilities Act (ADA) and Family Educational Rights and Privacy Act (FERPA).
- Nurses will also assist with the process of notifying all teachers, staff, and families of students in a school if a test-confirmed COVID-19 case is identified among students, teachers or staff who have had direct contact with that individual, consistent with school notification requirements for other communicable diseases, and consistent with legal confidentiality requirements.
- Nurses will assist with communicating expectations for individuals who are suspected to have COVID-19 or who are exhibiting symptoms of COVID-19 and do not pass their screening to enter a campus or building.

Classroom Procedures & Student-Teacher Interaction

- In protecting the student's educational experience, teachers and students will practice social distancing to the full extent possible.
- Students' desks will be placed at a safe distance apart with protective shields.
- All students and teachers are required to wear an approved face covering while in the classroom.
- Student will have a desk shield available for extra protection.
- Limited physical contact will be practiced. Students WILL NOT be allowed any physical contact, including

Section 1: School Health Guidelines

Classroom Procedures & Student-Teacher Interaction Cont.

- shaking hands, hugging, fist-bumps, high fives, or elbow bumps.
- Students will be required to wash hands or use hand sanitizer regularly throughout the day.
- All restrooms will be monitored to maximize sanitary conditions.
- Teachers will limit the sharing of equipment and supplies within the classroom. When this is necessary, equipment and supplies will be cleaned between uses.

Building Procedures: Use of Non-Classroom Spaces Gymnasiums

- In the initial stages of the return to on-campus learning, the gymnasium may be used as a learning space or location for eating meals. Students will be seated at a safe distance apart, and protective equipment will be in place.
- Strict social distancing will be exercised throughout the PE period.
- When possible, students will gather outside, rather than inside, due to the likely reduced risk of virus spread outdoors.
- Additionally, low intensity workouts and stretch exercises will be done in an effort to minimize students' exposure to sweat or other bodily fluids.
- Participation in extracurricular activities on campus will align with UIL and non-UIL activities guidance.
- Each campus will design entry, exit, and transition procedures based on the campus floor plan.
- To promote social distancing and better flow of traffic into and out of the gymnasium, Administration will designate an entry and exit door and provide guidance (floor decals) to maintain social distancing (six feet of distance between) as people move through the building.

Campus Hallways

- Social distancing is critical during the passing of students and staff throughout the day. While we do not anticipate students having to move throughout the campus often, when transitions do occur, it is extremely important to remain at least 6 feet apart, and take all the regular precautions such as wearing your face mask or face shield, avoiding physical contact of any kind, etc.

Cafeteria

- The cafeteria may be used as a learning space or for serving/eating meals, if campuses are able to safely accommodate students seated at a safe distance apart and with protective equipment in place.
- Staggered lunches will be used to accommodate larger groups of students to be able to eat within the cafeteria while continuing to practice social distancing.

Library

- In the initial stages of the return to on-campus learning, the library may be used as a learning space. Students will be seated at a safe distance apart, and protective equipment will be in place.
- Students will not be permitted to congregate within the library. Students who need to use the library must practice social distancing.
- Students and staff will be required to wear a face mask/face shield while in the library.
- Hand sanitizer will be available throughout the library for everyone's use.
- Reading materials and furniture will be sanitized regularly.

Section 1: School Health Guidelines

Respond: Practices to Respond to a Test-Confirmed Case in the School

Required Actions if Individuals with Test-Confirmed Cases Have Been in a School

- STISD will follow the guidelines provided by the Texas Education Agency and our local public health entities to appropriately respond to a positive COVID-19 case on campus. STISD will coordinate with local public health entities to determine the appropriate actions based on the facts of the individual case and the scientific understanding of how the virus spreads.
- If an individual who has been in a school or office is test-confirmed to have COVID-19, the campus will notify the local health department, in accordance with applicable federal, state and local laws and regulations, including confidentiality requirements of the Americans with Disabilities Act (ADA) and Family Educational Rights and Privacy Act (FERPA).
- The STISD Human Resources Department will lead the campus or office through contact tracing to ensure proper notification occurs.
- STISD Nursing staff will focus on preparing for, responding to, and recovering from biohazards in the work place. These staff members will be training all staff in the measures of infection control and disease outbreak containment.
- Consistent with school notification requirements for other communicable diseases, and consistent with legal confidentiality requirements, the campus will notify all teachers, staff, and families of students in a school if a test-confirmed COVID-19 case is identified among students, teachers or staff who participate in any on campus activities, within appropriate guidelines and with direction from Human Resources.
- Upon receipt of information that any teacher, staff member, student, or visitor at a school, including an individual working or learning remotely but who has participated in any on-campus activity, is test-confirmed to have COVID-19, the school must submit a report to the Texas Department of State Health Services via an online form. The report must be submitted each Monday for the prior seven days (Monday-Sunday).
- Schools must close off areas that are heavily used by the individual with the test-confirmed case (student, teacher, or staff) until the non-porous surfaces in those areas can be disinfected, unless more than 7 days have already passed since that person was on campus

Individuals Confirmed or Suspected with COVID-19

- Any individuals who themselves either: (a) are test-confirmed to have COVID-19; or (b) experience the symptoms of COVID-19 (listed below) must stay at home throughout the infection period, and cannot return to campus until the school system screens the individual to determine any of the below conditions for campus re-entry have been met.
- In the case of an individual who is symptomatic and is diagnosed with COVID-19, the individual may return to school when all three of the following criteria are met:
 - i. at least one day (24 hours) has passed since recovery (resolution of fever without the use of fever-reducing medications);
 - ii. the individual has improvement in symptoms (e.g., cough, shortness of breath); and
 - iii. at least ten days have passed since symptoms first appeared.
- In the case of an individual that is asymptomatic but has received a positive COVID-19 test result, the individual may not return to the campus until ten days have passed since a positive test.
- In the case of an individual who has symptoms that could be COVID-19 and who is not evaluated by a medical professional or tested for COVID-19, such individual is assumed to have COVID-19, and the individual may not return to the campus until the individual has completed the same three-step set of criteria listed above.
- If the individual has symptoms that could be COVID-19 and wants to return to school before completing the above stay at home period, the individual must either (a) obtain a medical professional's note clearing the individual for return based on an alternative diagnosis, though for health privacy reasons the note does not need to indicate what the alternative diagnosis is, or (b) obtain an acute infection test (at a physician's

Section 1: School Health Guidelines

Individuals Confirmed or Suspected with COVID-19 Cont.

- office, [approved testing location](#), or other site) that comes back negative for COVID-19.
- If the individual has tested positive for COVID-19 and believes the test was a false positive, and wants to return to school before completing the above stay at home period, the individual must either (a) obtain a medical professional's note clearing the individual for return based on an alternative diagnosis, though for health privacy reasons the note does not need to indicate what the alternative diagnosis is, or (b) obtain two PCR acute infection tests (at a physician's office, [approved testing location](#), or other site) at least 24 hours apart that come back negative for COVID-19.

State Reporting Regarding COVID-19

- As set out in TEA's Public Health Guidance, upon receipt of information that any teacher, staff member, student, or visitor at a school, including an individual working or learning remotely, but who participates in any on-campus activity, is test-confirmed to have COVID-19, the school must submit a report to the Texas Department of State Health Services via an online form. The report must be submitted each Monday for the prior seven days (Monday-Sunday).
- To allow the district to comply with state reporting requirements, STISD asks that any teacher, staff member, student or visitor at a school, including any individual who is working or learning remotely, reports to the district if test-confirmed to have COVID-19. Parents may report students who are test-confirmed to have COVID-19 to the child's campus principal, and faculty and staff members must report to the STISD Human Resources Department, of test-confirmation of COVID-19.

Daily Home Screening for Students, Staff & Visitors

Parents: Please review this checklist before sending your child to school with any symptoms of COVID-19. Have they recently begun experiencing any of the following in a way that is not normal for them?

Staff: Please review this checklist before reporting to work with any symptoms of COVID-19. If you believe you might be symptomatic, contact your immediate supervisor. Have you recently begun experiencing any of the following in a way that is not normal to you?

Section 1: Symptoms

- | | |
|--|---|
| <input type="checkbox"/> Feeling feverish or a measured temperature greater than or equal to 100.0 degrees | <input type="checkbox"/> Chills |
| <input type="checkbox"/> Loss of taste or smell | <input type="checkbox"/> Sore throat |
| <input type="checkbox"/> Cough | <input type="checkbox"/> Congestion or runny nose |
| <input type="checkbox"/> Difficulty breathing | <input type="checkbox"/> Shaking or exaggerated shivering |
| <input type="checkbox"/> Shortness of breath | <input type="checkbox"/> Significant muscle pain or ache |
| <input type="checkbox"/> Fatigue | <input type="checkbox"/> Diarrhea |
| <input type="checkbox"/> Headache | <input type="checkbox"/> Nausea or vomiting |

Section 2: Close Contact/Potential Exposure

- ☐ Had close contact with a person with confirmed COVID-19

Identifying Possible COVID-19 Cases on Campus

- If an individual begins feeling ill during the school day, contact must be made with the nurse immediately by phone. The campus/department will immediately isolate any student or employee who shows COVID-19 symptoms. If experiencing symptoms:
- The employee will be excused from work and asked to leave immediately. Immediate supervisor and the Human Resources Department will be notified.
- the student will be isolated until he/she can be picked up by a parent or guardian. The holding area for isolating students is to be determined by the administrator of each campus, and a staff member will be designated to monitor the student. If there is more than one non-related student that is suspected to have COVID-like symptoms, they will be in the same holding area wearing a mask and six feet apart. The parent or guardian will be notified of the importance of picking up the student as soon as possible to prevent spread.
- The campus/department will immediately clean and disinfect all areas used by the individual who displayed possible COVID-19 symptoms, which will include but not be limited to, the classroom and isolation room.

Section 2: Situational Safety Guidelines

To create the safest environment possible for our STISD community, we are looking closely at the way we handle each facet of school operations and campus life. This school year will look different in everything from transportation to school, check-in, transitions throughout the school day, visitor and delivery protocols, and meal service. It will be up to all of us to work together to follow the new processes and protocols in place to provide safety. The following section details the ways we are laying out movement throughout buildings and campuses.

Section 2: Situational Safety Guidelines

Transportation

School Buses

- If parents are able, they are encouraged to drop their children off at school. However, STISD will continue offering bus transportation during the 2020-2021 school year and is taking precautions to make this method of transportation as safe as possible.
- Parents are asked not to leave the bus stop location in the morning until their child has undergone a temperature screening and passed. These temperature checks will occur prior to the student boarding the bus. If a student registers a temperature at or above 100.0 Fahrenheit, the student will not be allowed to board the school bus. Bus driver will notify campus of any students unable to board bus related to high temperature.
- Hand sanitizer will be used upon boarding the bus.
- Students will be required to wear a face mask/face shield in order to enter the bus.
- Weather permitting, the windows of the bus will be lowered for proper ventilation.
- Each bus will be at half capacity to allow space for social distancing.
- Buses will be thoroughly cleaned after each bus trip, focusing on high-touch surfaces such as bus seats, steering wheels, knobs, and door handles. During cleaning, windows will be opened to allow for additional ventilation and air flow.

Visitors and Deliveries

- STISD will limit visitors to schools and offices to those essential to school operations and those with scheduled appointments to discuss student matters, when absolutely necessary.
- Virtual methods for meetings will be used as an alternative to in-person meetings to the greatest extent possible.
- Any visitor seeking to access any facility (and with an approved purpose for visiting) will be subject to the same safety guidelines as employees and students (face mask required, in addition to sanitization upon entering the facility) and will be screened for COVID-19 symptoms before entering a building using the same process.
- STISD will not allow any individual who fails the screening criteria to enter any facility or bus until they are cleared using the “re-entry” guidelines, as defined in Individuals Confirmed or Suspected with COVID-19 section.
- Parents and guardians are asked to limit drop-off of items to their children to only essential items (school materials and medications previously approved). To the fullest extent possible, campus staff will utilize a “no contact” system to allow these deliveries to students during the school day.
- No lunches are to be dropped off, unless a medical exception is in place and been previously approved by school nurse.
- Reception areas at campuses and district offices will be equipped with plexiglass barriers between the receptionist/secretary and approved visitors. The number of visitors allowed within the reception area will be limited, and those visitors must maintain social distancing.

Arrival/Dismissal/Transitions

Arrival

- The campus will establish multiple entry points.
- Students arriving on the bus will be routed through an entrance separate and apart from those driving themselves to campus or being dropped off by parents. All of these students would have already passed their morning temperature scan to be admitted to the building.
- Students arriving to campus through their own transportation or through parent drop-off will go through a screening before entering through their designated entrance to the campus. Parents/guardians are asked to remain in their vehicle at all times during the drop off/pick up of their child within the parking lot area and not to leave until the student passes the screening and is cleared to enter the building. If a student has a temperature at or above 100.0 Fahrenheit, the parent/guardian will take the student home.

Section 2: Situational Safety Guidelines

Arrival Cont.

- Once checked in, students will proceed directly to their classroom.
- Social distancing within the parking lot and path to campus is required.

Dismissal

- To promote a better flow of traffic, the campus will establish multiple exits and will put in place staggered release times for different student groupings based upon mode of transportation or other appropriate criteria – i.e. students riding the bus, those being picked up by parents, and those driving themselves.
- Parents are asked to pick up students immediately after school. Students driving themselves will be asked to leave campus immediately after dismissal.

Transitions

- Transitions throughout the school day will be limited.
- When transitions are required, it is extremely important to remain at least six feet apart and to take all the regular precautions such as wearing your face mask or face shield, avoiding physical contact of any kind, etc. Students will be asked to move directly from one class to the next without congregating within the hallway.
- Schedules and traffic patterns will be established by the campuses to promote better flow of individuals through the building while maintaining social distancing. Signage and floor markings will be posted to communicate and reinforce physical distancing expectations, and staff will be present to support these efforts.
- Students will not be allowed to use a locker for the storage of their items.

Child Nutrition/Meal Service

- From Sept. 15 through the end of June, STISD will serve free meals for all STISD students and children 18 years of age and younger from within the communities. Meals will be served curbside for non-STISD students and STISD students who are participating in virtual learning from home.
- Once the district goes back to the National School Lunch Program, meals will only be available to STISD students and will be subject to the regular prices charged for meals for the school year; they will not be available to non-STISD students within the local community. Free and reduced-price meal status will be taken into account. For additional information on the application process for free and reduced-price meals, visit the district website at www.stisd.net.
- Once students are able to return to campus for traditional (in-person) instruction, breakfast and lunch will be served within the campus for those who opt for this instructional setting, and will continue curbside for those who opt to continue with virtual instruction at home. Depending upon the number of students participating in on-campus instruction, the district will determine if meals will be served within the cafeteria (or other large venue) or individual classrooms. With either option, students will be seated at a safe distance apart, and protective equipment will be in place. The district/campuses may also plan for staggered lunch periods for groups of students, with cleaning time in between.
- Purchasing of meals will be contactless to the full extent possible. To facilitate this, all students will be issued a student ID card with a barcode on the back that can be scanned at the point of sale rather than having to use a shared keypad to enter information. Campuses will provide students with these ID cards.
- Parents are highly encouraged to put funds into their food service accounts through the Infinite Campus Parent Portal so that meal purchases can be made without the use of cash.
- Parents and students may pick up meals at any of the STISD campuses. As long as the student attends STISD, whether or not the student is enrolled at the campus to which he or she visits to pick up a meal will not matter. For example, if a student attends Medical Professions in Olmito but lives in Edinburg and decides to visit

Section 2: Instructional Plan

Child Nutrition/Meal Service Cont.

Preparatory Academy or World Scholars to pick up meals, the process will work the same.

- If siblings attend different STISD schools, they can pick up their meals at one campus rather than having to visit both campuses.
- All utensils and trays will be disposable and will be discarded after every meal.
- When the cafeteria is used for dining, students will be seated at a safe distance apart, and protective equipment will be in place.
- Hand sanitizer will be available throughout the cafeteria for everyone's use.
- Students will be required to wear a face mask/face shield while in the cafeteria, except when eating.
- The purchase of meals within the cafeteria will continue to be contactless to the extent possible, and students will be asked to use their student ID cards to pay for meals.
- Serving areas and eating areas will be cleaned and sanitized after every lunch period.

Section 3: Instructional Plan

STISD remains committed to providing the highest-quality educational experience possible during the 2020-2021 school year, no matter the method of delivery. The district will build upon its Flexible Learning Initiative, used by campuses during the school closures in the spring of 2020. Administration and faculty have gone through additional professional development to build upon their knowledge and skills and build up expertise in delivering virtual instruction.

General Information

STISD started the school year on Monday, Aug. 17, providing solely virtual instruction to students. With approval from the STISD Board of Directors, STISD submitted an application for a waiver to the Texas Education Agency to allow for the continuation of solely virtual instruction for four weeks beyond the initial four weeks allowed. As per TEA's guidance, during the second four-week period, the district began transitioning students back to campus through a gradual phased-in approach to allow for students and faculty/staff to get acclimated to the "new normal" and processes and procedures in place. See the [STISD Phased-In Return to School Plan](#) for additional details.

For the second and third quarters (Oct. 13-Dec. 17 and Jan. 5-March 11), STISD high schools offered three different instructional setting options for students and parents to choose from: On campus Instruction (traditional), Blended (combination of face-to-face at school and virtual learning at home), and Virtual Instruction (completely at home). STISD middle schools offered two instructional settings: On-Campus Instruction at school or Virtual Instruction from home. The two middle schools are not offering a blended option at this time.

Parents who wanted to change their child's instructional setting for the fourth quarter (March 22-May 26) were asked to contact their child's campus prior to Spring Break to communicate that change.

Parents and students are asked to commit to an instructional setting for an entire grading period. Students/parents will be able to transition between instructional delivery methods, if they so choose, but will not be able to do so until the end of a grading period to take effect at the beginning of the next grading period. Parents must commit to one instructional method for the duration of the **fourth** quarter.

With on-campus instruction now taking place, teachers are working with their students in-person as well as those participating in their classes remotely through virtual instruction.

On-Campus Instruction

- Using a phased-in approach, STISD began transitioning students back to campuses on Tuesday, Sept. 15. The district continued to gradually bring back students until on-campus instruction began for students district

Section 3: Instructional Plan

On-Campus Instruction Cont.

wide whose parents opted for them to participate in that instructional setting. On-campus instruction transitioned from a campus learning space, used for the initial phase of the return to campus, to face-to-face instruction leading up to the second quarter. See the [STISD Phased-In Return to School Plan](#) for additional information.

- Any student who has opted for on-campus instruction as the instructional method for the designated grading period and is absent from school due to COVID-19 symptoms, a positive COVID-19 test result, or close contact with someone test-confirmed with COVID-19, will be counted present, if the student logs on to itsLearning and participates in the virtual coursework for the days absent from on-campus instruction.
- A student who has opted for on-campus instruction cannot alternate between on-campus instruction and virtual instruction for reasons other than those associated with COVID-19. A student will be assigned back to the virtual instruction method for the grading period, if he or she continually misses classes on campus for reasons other than those associated with COVID-19.

Virtual Learning

- From Aug. 17 to Sept. 14, all STISD students participated in solely virtual instruction via STISD's Flexible Learning Initiative.
 - Starting Sept. 15, STISD began gradually bringing select groups of students back to the campuses to continue with the same virtual instruction occurring at home but within a supervised learning space environment at school. Even with face-to-face instruction now an option district wide, students and parents will continue to have the option to participate in virtual instruction from home. All students who opt for blended instruction will come to campus on select days during the week (according to the campus guidelines and schedule) and will participate in virtual instruction on all other days. See the [STISD Phased-In Return to School Plan](#) for additional information.
 - If you are in need of a device or technology equipment for virtual instruction, and you are not able to pick up curbside due to a positive case or exposure to COVID-19, please contact your school immediately to make sure you receive the necessary resources.
 - Teachers will provide online instruction from their campus classrooms using the itsLearning learning management system (LMS) platform. It is intentional in providing a structured approach to deliver curriculum and instruction. It also allows for teachers to provide students with additional time and resources as needed based on individual plans.
 - STISD will offer Asynchronous Flexible Learning Instruction with Synchronous Components (100% virtual) for all subjects following the Board Approved 2020-2021 A/B Calendar. We will offer virtual instruction for all students choosing to learn from home using the itsLearning (LMS) platform throughout the 2020-21 school year.
1. Students will follow TEA's asynchronous instructional model with synchronous components, which is self-paced with intermediate teacher instruction.
 2. Daily student engagement through itsLearning is required.
 3. Teachers and students will follow a four-period online A/B schedule.
 4. Teachers will be actively available through itsLearning chat and TEAMS/Zoom for student support according to the online schedule.

Asynchronous Option w/ Synchronous Components (Class Breakdown)

← 60 Minutes →			
10 Minutes	20 Minutes	20 Minutes	10 Minutes
Do Now	Virtual Instruction/ Student Support Session	Work Time/ Student Support	Exit Ticket

Teacher actively available through
itsLearning chat/TEAMS/ZOOM for support

Section 3: Instructional Plan

*** Notice Regarding Recording Virtual Classroom Sessions

- During the course of virtual learning, please be advised and informed that a classroom instructor, administrator or their designee may listen in and/or record the virtual classroom sessions solely for instructional purposes. Please also be advised and informed that student audio and video images may appear in such recordings as part of the instruction process and such recordings will be uploaded to the District's internal learning platform to be viewed only by authorized users and only for instructional purposes.

Sample Schedule for Virtual Learning

- STISD's A/B calendar schedule.
- Student delayed start time: 9:30 a.m.
- Teachers and students will meet remotely through the itsLearn ing platform for at least 20 minutes of instruction when new concepts are being introduced. Meetings will be recorded and posted on itsLearning.
- One-to-one/group student support and enrichment is embedded.
- Attendance: itsLearning student interaction report, including daily contact of student with teacher and/or submission of assignment(s).
- Each instructional period will be broken down into four time segments, including 10 minutes of Do Now/Bell ringer, 20 minutes of Virtual Instruction/ Student Support Session, 20 minutes of Work Time/Student Support, and 10 minutes of Exit Ticket/Lesson Summary.

Blended Learning

- At this time, the STISD middle schools will not be providing a blended option; however, the STISD high schools will provide a blended instruction option for families, which will encompass a combination of on-campus instruction (traditional) and virtual instruction (at home). The blended instruction plan will differ by campus. All students who opt for blended instruction will come to campus on select days during the week (according to the campus guidelines and schedule) and will participate in virtual instruction on all other days. Students are required to stay on campus for the entire school day (from 9:30 a.m. to 4:05 p.m.) on the days on which they report for on-campus instruction. The following are the plans for the campuses:

Campus	Blended Model
Health Professions Mercedes	The blended model at Health Professions will be available only to seniors who need to go out to the clinical sites for hours to achieve certifications. All other students will need to opt for full-time on-campus instruction or virtual learning from home.
Medical Professions Olmito	Students participating in the blended model at Medical Professions are required to attend classes on campus for a full school day (9:30 a.m. to 4:05 p.m.) on the day they are scheduled for a health science course.

Section 3: Instructional Plan

Science Academy Mercedes	Students participating in the blended model at Science Academy will attend classes on campus one full instructional day per week according to the following schedule: Monday – Freshmen, last names A-L Tuesday – Freshmen, last names M-Z Wednesday – Sophomores Thursday – Juniors Friday- Seniors. These students will participate in Virtual Instruction on all other days.
World Scholars Edinburg	The blended learning option at World Scholars will only be available to 11th and 12th grade students who are participating in product-based Dual Enrollment and International Baccalaureate (IB) courses. If students commit to this option, they will attend classes on campus on the days when they have a product-based course (i.e. Art Appreciation, IB Film, etc.) for a maximum of two days per week. Students will be required to attend classes on campus for the full school day (9:30 a.m. to 4:05 p.m.).

Sample schedule for all three Instructional Settings

- Beginning Oct. 5, the following On Campus/Remote Schedule will be followed for middle schools and high schools and for all three instructional settings – Virtual Instruction, On-Campus (Traditional) and Blended.
- The schedule reflects the regular campus model schedule, but with modifications that meet the flexibility needs of students working remotely. Students will continue to follow STISD's A/B calendar.
- Individual campuses may have alternative lunch schedules, which could slightly alter the afternoon class schedules, but the beginning and ending times of the school day will remain the same. Campuses will share schedules with their students, parents and faculty/staff, if they are different from the schedule presented in this guide.

Time	Section
8:00 a.m. - 9:25 a.m.	Student Support
9:30 a.m. - 10:30 a.m.	Period 1
10:40 a.m. - 11:40 a.m.	Period 2
11:40 a.m. - 12:15 p.m.	Lunch A/Independent Study
12:20 p.m. - 12:55 p.m.	Lunch B/Independent Study
12:55 p.m. - 1:55 p.m.	Period 3
2:05 p.m. - 3:05 p.m.	Period 4
3:15 p.m. - 4:05 p.m.	Student Support

Technology Equipment

- For students to have success in virtual learning through STISD's Flexible Learning Initiative, they will need access to the following equipment:
- Broadband Internet access
- An appropriate device, which includes a microphone and camera
- iPads, laptops, or desktop computers are preferred

Section 3: Instructional Plan

Technology Equipment Cont.

- STISD is committed to ensuring all students and teachers have access to the technology needed for success through virtual instruction or any other method. Campuses deployed surveys during the summer to identify students who may not already have access to a device or internet access at home. Campuses will work with these families to ensure their needs are fulfilled. If you did not take the survey or alert the campus to a need you might have, or if a need comes up after virtual instruction begins, parents are asked to contact their campus directly.

Specialized Programs

- STISD is committed to the continuation of services for all students in specialized programs, including (but not limited to) Special Education, Section 504, Dyslexia, ELL, Dual Language, GT, CTE or Dual Credit. The campuses will follow individual education plans, accommodations and modifications. Appropriate campus personnel will be in touch in regards to the continuation of support for those participating remotely through virtual instruction and in-person.

Staff Expectations

- All staff members must continue to meet the work expectations set by the district and their supervisors, and are subject to any applicable employment contract terms.
- Employees will be informed of and trained on the specific protocols outlined in this document and the practices adopted by STISD.
- Campuses will reduce and limit in-person staff meetings or other requirements for staff to congregate in close settings. However, when those meetings are necessary, all precautions will be required, including the use of masks, social distancing, and all precautionary measures.
- Staff members are asked not to socialize in the workplace and to maintain social distancing. They are encouraged to use phone and virtual means of communication as much as possible.
- It is highly recommended for employees to follow the CDC guidelines inside and outside of work.

Student Expectations and Agreements

- For a minimum of the first four weeks of the 2020-2021 school year, all STISD students will receive 100 percent virtual instruction via the district's Flexible Learning Initiative. This may be extended dependent upon conditions in the region and direction from the STISD Board of Directors.
- Until on-campus instruction resumes, all STISD students will be expected to complete their instruction virtually as detailed in the Virtual Instruction section of this document. Once in-person instruction is allowed, STISD plans to provide options for students and parents to select from. These options will include traditional (in-person), blended (in-person and at home), and virtual (completely a home). Students will be able to transition between methods, if they so choose, but these transitions will only be able to take place between grading periods (with the exception of transitioning to in-person instruction, should that method become available before the first grading period ends or at some point within a grading period).
- Students are expected to participate daily in all required coursework and remote lessons during normal school hours.
- Students must also participate in all tutoring sessions and videoconferencing required by the teachers.

Attendance

- Per the Texas Education Code (TEC), §25.092, students must attend 90% of the days a course is offered (with some exceptions) in order to be awarded credit for the course and/or to be promoted to the next grade. This requirement remains in effect during the 2020-2021 school year.
- As per policy FED (LEGAL), if a student fails to attend school without excuse on ten or more days or parts of days within a six-month period in the same school year, a district shall within ten school days of the student's tenth absence refer the student to a truancy court for truant conduct under Family Code 65.003(a). [See FEA]

Section 4: Additional Guidelines

Attendance Cont.

- The district may file a complaint against the student's parent in a county, justice, or municipal court for an offense under Education Code 25.093 if the district provides evidence of the parent's criminal negligence. For additional information, search for "Truancy" within the [district policy page](#) or read policy FED (LEGAL).
- Given the public health situation, student attendance may be earned through the delivery of virtual instruction. Remote attendance through the district's Flexible Learning Initiative will count the same as on-campus attendance in satisfying this requirement.
- Any student who has opted for on-campus instruction as the instructional method for the designated grading period and is absent from school due to COVID-19 symptoms, a positive COVID-19 test result, or close contact with someone test-confirmed with COVID-19, will be counted present, if the student logs on to itsLearning and participates in the virtual coursework for the days absent from on-campus instruction
- A student who has opted for on-campus instruction cannot alternate between on-campus instruction and virtual instruction for reasons other than those associated with COVID-19. A student will be assigned back to the virtual instruction method for the grading period, if he or she continually misses classes on campus for reasons other than those associated with COVID-19.

Grading

- STISD will utilize its standard grading policy in accordance with the Student Handbook for the 2020-2021 school year. Grades received through the virtual instruction format will follow the same grading guidelines as those received through in-person instruction or blended learning. Grades earned through any of the three methods will be given in numerical format and will be reported on report cards and factored into a student's GPA. Additional information about the grading guidelines will be communicated by the student's campus.

Tutorials

- Campuses will provide the opportunity for the tutoring of students through virtual methods.
- Students are expected to attend virtual tutoring, if required, for their academic success

Testing

- Whether taking courses virtually, on campus or through the blended option, all students are required to take their assessments on campus in Spring 2021, according to the decision made by the Texas Education Agency. Visit the district website for resources pertaining to the spring testing cycle, including a testing schedule and letter with additional information. For any questions, please contact your child's campus directly.

Parent Support in Virtual & Blended Learning

- Virtual instruction and blended learning open up limitless opportunities for innovation in the delivery of instruction, but also bring with them challenges and the need for additional support and collaboration. Success through these methods requires a cooperative effort between parents/guardians, students, teachers and administrators. We realize all families are in different situations during this pandemic, and parents have varying time and availability to assist their children with their education. If at any time you need to discuss your child's progress or feel you need additional support, you are encouraged to reach out to your child's campus directly.

Social and Emotional Resources

- The level of uncertainty inherent in the COVID-19 pandemic has been anxiety-provoking. Most people are experiencing some degree of re-entry anxiety when returning to work or school. STISD is prepared to provide STISD families needed mental health supports, as we are staffed with School Counselors, Social

Section 4: Additional Guidelines

Social and Emotional Resources Cont.

Workers, Licensed Professional Counselors (LPC), and a Licensed Specialist in School Psychology (LSSP). Due to current circumstances, service may be provided by means of Telemental health. Telemental health involves the use of available technology resources, such as telephone or video conferencing. Should you feel the need to receive these services, please contact your school's counseling center. A form to request a telemental health session will be available along with resources on the district website:

www.stisd.net/parents/health-and-wellness.

Updating of Contact Information and Preferences

- With remote learning and the need for more frequent communication to keep families engaged and aware of what is going on within the district and campuses, it has become even more important for STISD parents to ensure the contact information and preferences they have on file with the district are correct and up-to-date.
- Parents are asked to sign up for an Infinite Campus Parent Portal account, if they do not already have one created. This resource can be used to check grades, monitor attendance, make payments for meals, and update contact information for yourself and other members of your household.
- If you do not yet have an account created, you should have received an e-mail from your campus Instructional Technology Specialist recently sharing with you additional information about this resource and how to set it up. This e-mail includes your custom GUID/key needed to set up your account. As this is a custom code, please do not share this e-mail with others. If you did not receive this e-mail and need help getting started with the portal, please contact your child's campus directly.

Registration and New Student Enrollment

- STISD campuses will not be holding in-person registration sessions for the 2020-2021 school year. Campuses will use digital methods to collect any necessary forms or information.
- Enrollment for the 2020-2021 and 2021-2022 school years will continue through the district's online SchoolMint application. The link to this application can be accessed through the district's website at www.stisd.net. The registration packet for new students is available for parents to complete via SchoolMint as well.

Scheduling, Open House, and Meet the Teacher

- Phone and virtual methods will be used as frequently as possible during the 2020-2021 school year to deliver these types of events for district families.
- Meet the Teacher events for the 2020-2021 school year will be held virtually. Campuses will reach out to parents with invitations to "attend" these events remotely and learn more about the plans for the upcoming school year.
- Each campus will customize its Meet the Teacher event(s) to accommodate the needs of its students, parents and teachers, so these events may differ from campus to campus.
- The timing and duration of the events may differ between campuses, and the delivery of information may include live video presentations, video recordings, or other virtual methods.

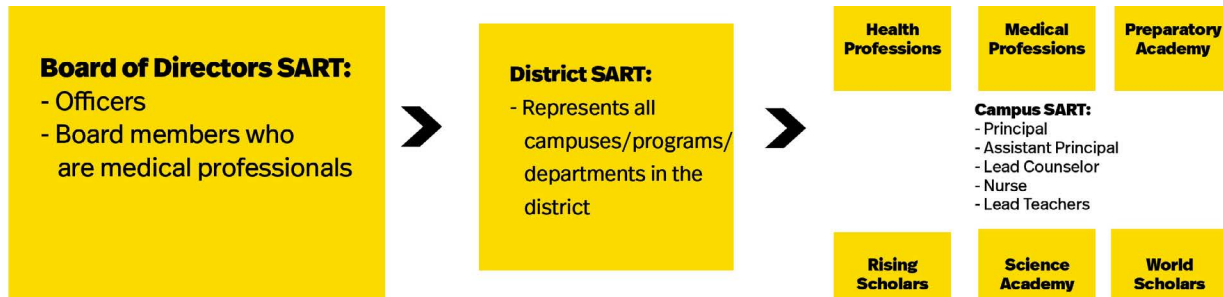
Extracurricular/Non-Academic Activities

- Participation in extracurricular activities on campus will align with UIL and non-UIL activities guidance.
- No in-person meetings may be held for clubs and campus organizations. Rather, these groups must meet virtually.
- Campuses may hold extracurricular activities in a virtual format, when possible, at the discretion of the campus administration.
- No field trips or indoor pep rallies will be held until further notice.
- Hand washing or hand sanitizing stations must be available for all in-person activities.

Section 4: Additional Guidelines

Extracurricular/Non-Academic Activities Cont.

- STISD staff will follow the response protocol detailed within this document in the event that a student or staff member tests positive for COVID-19.
- All spectators and participants attending an event must wear a face covering, unless there are documented health exceptions.



Situational Awareness and Response Teams (SARTS)

As we kick off our new school year, it is crucial to ensure an effective flow of accurate information throughout our campuses and district community. To better facilitate the sharing of feedback, concerns and ideas to be taken into account for the health and safety of our district community, we are establishing Campus and District Situational Awareness and Response Teams (SARTs).

The SARTs will serve as pipelines through which information can be discussed and shared throughout the district in a very efficient manner. The teams will represent the various campuses/departments/programs throughout the district and will address the most current conditions in an effort to provide solutions. These recommendations will be reviewed and compiled, to be shared with everyone through revisions to our Safe Return to Work and School Plan. Please refer to SART diagram, along with a complete listing and positions to be established for each one.

Campus	Campus	Campus
Health Professions	Preparatory Academy	Science Academy
Marcos L. Flores	Ana Castro	Lorena Madrigal
Rigo Olivarez	Mari Ochoa	Janis De Luna
Magdalena Ojeda	Wilmer Romero	Brenda Swinnea
Amy Pena	Maria Salinas	Sylvia Gamboa
Alicia Rios	Vivian Galloso	Cindy Key
Elizabeth Gutierrez	Christopher Morales	Patrick Montague
Aaron Flores	Raheem Muhammad	Andrew Cortez
Irene Perez	Daren Trevino	John Danielson
	Ruben Leo	Oscar (Gabe) Valdez
		Elizabeth Arriola

Section 4: Additional Guidelines

Campus	Campus	Campus
Medical Professions	Rising Scholars	World Scholars
Jose Lucio	Criselda R. Flores	San Juanita Ortiz
William McKinney	Francisco Hernandez	Eric Gutierrez
Mayela Solana	Leonel Casanova	Julia Ramirez
Elizabeth Quintero	Amy Dominguez	Victoria Marin
Deborah Cantu	Biatris Sierra	Kimberly Garza
Joseph Human	Jeremias Gonzalez	Rosie Cortez
Patricia Hernandez	Jose Perez	May Blanco
Hanani Vasquez	Amaris Vargas	Virginia Leonardelli
Francisco Vasquez	Enrique De Leon	Ana Perez
Victor Loya	Edwardo Guerra	Erika Sarabia
Gilberto Arreola		Ilina Trevino
Cheryl Fultz		
Shahn Reber		

Board of Directors SART:

Mr. Doug Buchanan, Board President

Mr. Henry LeVrier, Vice President

Dr. Sylvia Sánchez Garza, Secretary

Dr. Martin Castillo

Dr. Richard Fleming

Mr. Jaime Solis

Dr. Rick Villarreal

Dr. Tony Lara, Ex-officio member

District SART: Represents all campuses/programs/departments

Dr. Tony Lara, Superintendent

Mr. Jeff Hembree, Deputy Superintendent

Ms. Marla R. Knaub, Assistant Superintendent for Finance & Operations

Mrs. Lissa Frausto, Assistant Superintendent for Human Resources

Mr. Efrain Garza, Executive Director for Student Support

Ms. Nereyda Trevino, Chief Academic Officer

Mrs. Amanda Odom, Administrator for Public Relations & Marketing

Mrs. Ana Castro, Preparatory Academy Principal

Mrs. Cris Rodriguez, Rising Scholars Academy Principal

Mrs. San Juanita Ortiz, World Scholars Principal

Mr. Jose Lucio, Medical Professions Acting Principal

Mr. Marcos Flores, Health Professions Principal

Mrs. Lorena Madrigal, Science Academy Acting Principal

Mrs. Ann Vickman, Lead Librarian

Click to
view full TEA
Public Health
Planning
Guide

Campus SART: (Principal, Assistant Principals, Lead Counselor, Nurse & Team/Dept. Leaders)

The STISD Flexible Learning Initiative: Roadmap to a safe return includes recommendations and guidance from the CDC and the Texas Education Agency's Public Health Guidance. As per the TEA Public Health Guidance: "The guidance in this document is authorized by Executive Order GA-32, which has the effect of state law under Section 418.012 of the Texas Government Code. Executive Order GA-32 provides TEA with the legal authority to publish requirements for the operation of public school systems during the COVID-19 pandemic. TEA recommends that public school systems consult with their local public health authorities and local legal counsel before making final decisions regarding the implementation of this guidance."

Public Health Considerations

PROVIDE NOTICE: Parental and Public Notices

- School systems must post a summary of the plan they will follow to mitigate COVID-19 spread in their schools for parents and the general public, one week prior to the start of on-campus activities and instruction.
- School systems are required to provide parents a notice of their public education enrollment and attendance rights and responsibilities during the COVID-19 pandemic using a document published by TEA. This notice is posted at <https://tea.texas.gov/coronavirus> and can be found in [English](#) & [Spanish](#).

PREVENT: Required practices to Prevent the Virus from Entering the School

- School systems must require teachers and staff to self-screen for COVID-19 symptoms before coming onto campus each day.
- Parents must ensure they do not send a child to school on campus if the child has COVID-19 symptoms or is test-confirmed with COVID-19.

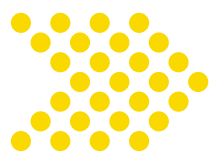
RESPOND: Required practices to Respond to a Test-Confirmed Case in the School

- Schools must close off areas that are heavily used by the individual with the test-confirmed case (student, teacher, or staff) until the non-porous surfaces in those areas can be disinfected, unless more than 7 days have already passed since that person was on campus.
- Consistent with school notification requirements for other communicable diseases, and consistent with legal confidentiality requirements, schools must notify all teachers, staff, and families of all students in a school if a test-confirmed COVID-19 case is identified among students, teachers or staff who participate on any on campus activities.

MITIGATE: Recommended and required practices to reduce the Likelihood of COVID-19 Spread inside the School.

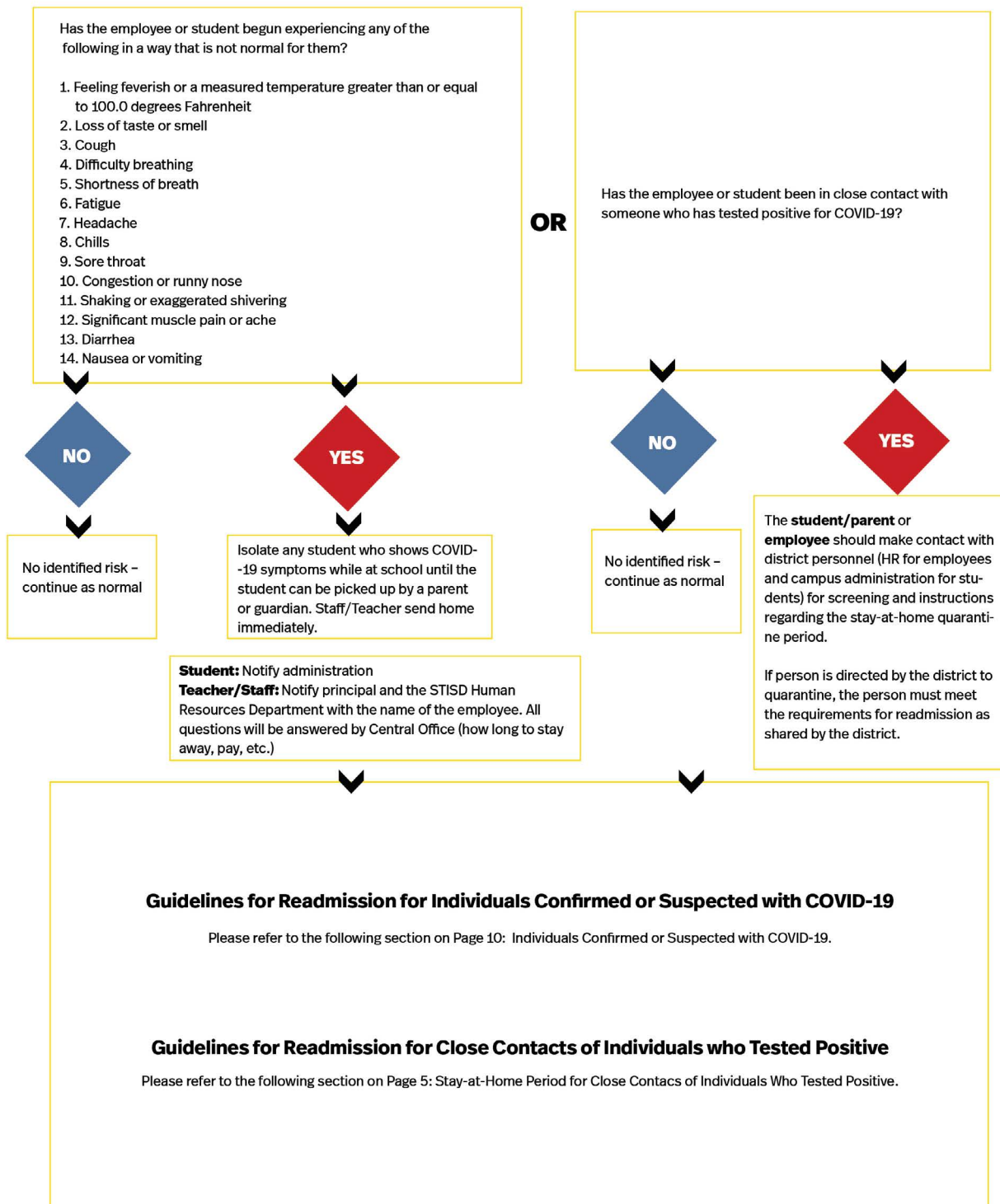
- School systems must rely on health and hygiene practices, including the use of hand sanitizer and/or handwashing stations with soap and water.
- **School systems must comply with TEA's public health guidance requirements regarding the use of masks.**
- School systems may require the use of masks by adults and students for whom it is developmentally appropriate in instances where masks are not mandated by the governor's executive order.
- School systems should encourage students to practice social distancing where feasible without disrupting the educational experience.

Additional Resources



COVID-19

SCREENING FLOW CHART



COVID-19

Wellness Questionnaire

Employee Name: _____	Yes	No
<p>Have you recently begun experiencing any of the following symptoms in a way that is not normal for you?</p> <ol style="list-style-type: none">1. Feeling feverish or a measured temperature greater than or equal to 100.0 degrees Fahrenheit2. Loss of taste or smell3. Cough4. Difficulty breathing5. Shortness of breath6. Fatigue7. Headache8. Chills9. Sore throat10. Congestion or runny nose11. Shaking or exaggerated shivering12. Significant muscle pain or ache13. Diarrhea14. Nausea or vomiting <p>Have you been in close contact with an individual who is lab confirmed positive for COVID?</p> <p>This document refers to "close contact" with an individual who is test-confirmed to have COVID-19. The definition of close contact is evolving with our understanding of COVID-19, and individual scenarios should be determined by an appropriate public health agency. In general, close contact is defined as:</p> <ol style="list-style-type: none">a. being directly exposed to infectious secretions (e.g., being coughed on); orb. being within 6 feet for a total of approximately 15 minutes throughout the course of a day ; however, additional factors like case/contact masking (i.e., both the infectious individual and the potential close contact have been consistently and properly masked), ventilation, presence of dividers, and case symptomology may affect this determination. <p>Either (a) or (b) defines close contact if it occurred during the infectious period of the case, defined as two days prior to symptom onset to 10 days after symptom onset. In the case of asymptomatic individuals who are test-confirmed with COVID-19, the infectious period is defined as two days prior to the confirming test and continuing for 10 days following the confirming test.</p> <p>I understand that the criteria for being on campus is answering no to all questions. If the answer is yes to either question, I will notify my immediate supervisor and not report to campus.</p> <p>X _____ Employee Signature Date</p>		

SOUTH TEXAS ISD 2020-2021 CALENDAR

A Days

July 2020							August 2020							September 2020						
S	M	T	W	T	F	S	S	M	T	W	T	F	S	S	M	T	W	T	F	S
			1	2	3	4							1			1	2	3	4	5
5	6	7	8	9	10	11	2	3	4	5	6	7	8	6	7	8	9	10	11	12
12	13	14	15	16	17	18	9	10	11	12	13	14	15	13	14	15	16	17	18	19
19	20	21	22	23	24	25	16	17	18	19	20	21	22	20	21	22	23	24	25	26
26	27	28	29	30	31		23	24	25	26	27	28	29	27	28	29	30			
							30	31												
October 2020							November 2020							December 2020						
S	M	T	W	T	F	S	S	M	T	W	T	F	S	S	M	T	W	T	F	S
				1	2	3	1	2	3	4	5	6	7			1	2	3	4	5
4	5	6	7	8	9	10	8	9	10	11	12	13	14	6	7	8	9	10	11	12
11	12	13	14	15	16	17	15	16	17	18	19	20	21	13	14	15	16	17	18	19
18	19	20	21	22	23	24	22	23	24	25	26	27	28	20	21	22	23	24	25	26
25	26	27	28	29	30	31	29	30						27	28	29	30	31		
Holidays							First Day of Instruction August 17							New Teacher Induction						
September 7 Labor Day							Last Day of Instruction May 26							August 4-5						
October 12 Columbus Day							Grade Reporting Periods End							District Staff Development						
Nov. 23-27 Thanksgiving							October 8 March 11							(No school for students on these days)						
Dec. 21-Jan. 1 Christmas							December 17 May 26							August 6-7&10-11, Jan. 18						
February 15 President's Day							Exam Early Release Days							Campus Instructional Design Days						
March 15-19 Spring Break							December 14, 15, 16, 17							(No school for students on these days)						
April 2, 5 Easter Break							May 21, 24, 25, 26							August 12-13, Nov. 20, Jan. 4, Mar. 12						
Weather Make-Up Days (2)							Exam Early Release Days							Teacher Work Days						
If Needed; Oct. 12, April 5							December 14, 15, 16, 17							(No school for students on these days)						
							May 21, 24, 25, 26							Aug. 14, Oct. 9, Dec. 18, May 27						
							Credit by Exam Test Dates							Saturday Faculty Work Day						
							Refer to the Campus Handbook							(No school for students on this day)						
							STAAR, AP, & IB Assessment Days							January 30 (Campus May Change The Date)						
January 2021							February 2021							March 2021						
S	M	T	W	T	F	S	S	M	T	W	T	F	S	S	M	T	W	T	F	S
					1	2		1	2	3	4	5	6		1	2	3	4	5	6
3	4	5	6	7	8	9	7	8	9	10	11	12	13	7	8	9	10	11	12	13
10	11	12	13	14	15	16	14	15	16	17	18	19	20	14	15	16	17	18	19	20
17	18	19	20	21	22	23	21	22	23	24	25	26	27	21	22	23	24	25	26	27
24	25	26	27	28	29	30	28							28	29	30	31			
31																				
April 2021							May 2021							June 2021						
S	M	T	W	T	F	S	S	M	T	W	T	F	S	S	M	T	W	T	F	S
				1	2	3							1			1	2	3	4	5
4	5	6	7	8	9	10	2	3	4	5	6	7	8	3	7	8	9	10	11	12
11	12	13	14	15	16	17	9	10	11	12	13	14	15	13	14	15	16	17	18	19
18	19	20	21	22	23	24	16	17	18	19	20	21	22	20	21	22	23	24	25	26
25	26	27	28	29	30		23	24	25	26	27	28	29	27	28	29	30			
							30	31												

South Texas ISD Board of Directors approved on March 24, 2020. Instructional time in this school calendar is 77,400 minutes (172 Instructional Days). The state requirement is for 75,600 minutes minimum of instruction.