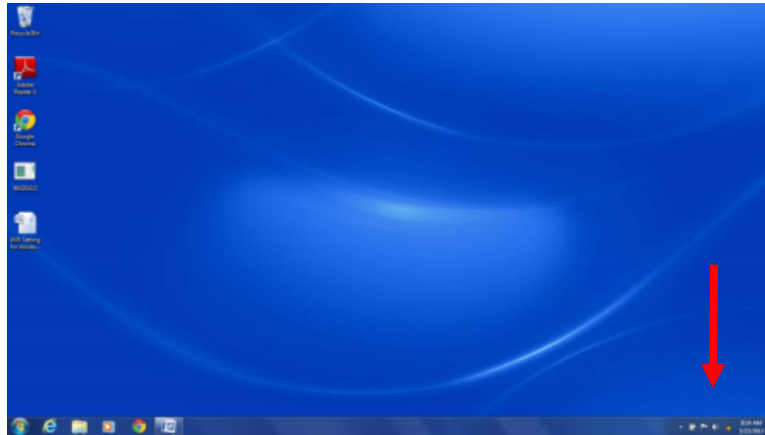


How do I connect my Windows laptop to the FUHSD WiFi?

For Windows 7 and prior

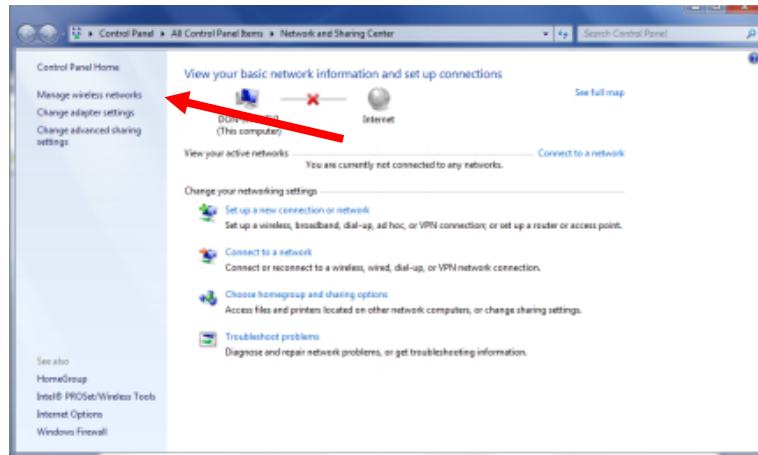
Click the wifi icon
in the system tray on the
right side of the taskbar



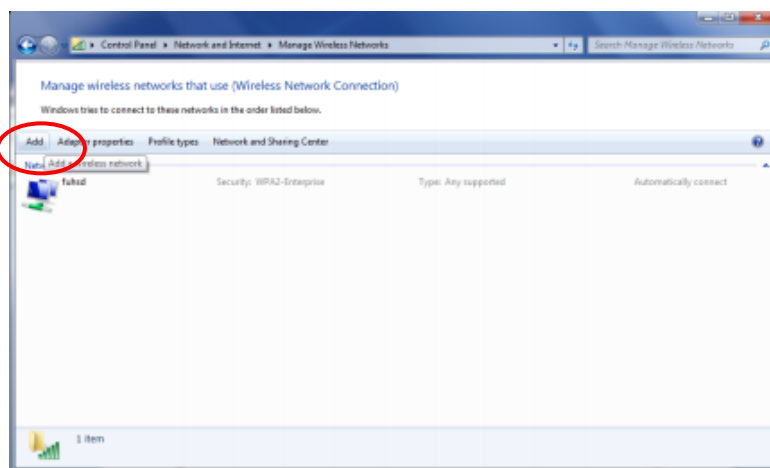
Click **Open Network and Sharing Center**



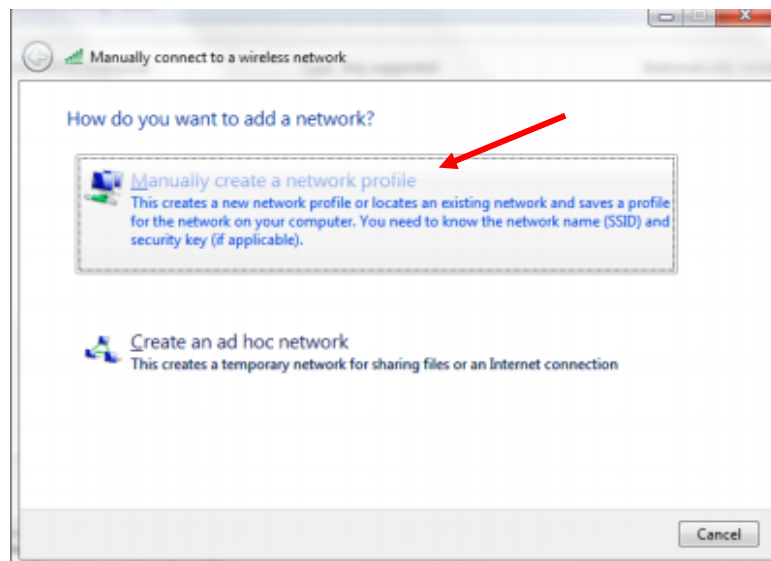
Click **Manage wireless networks** in the left-side menu



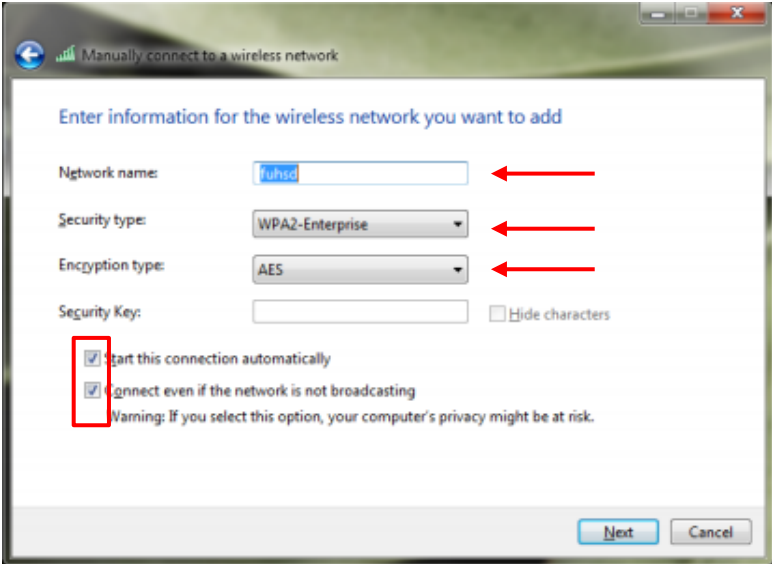
Click **Add** in the top menu



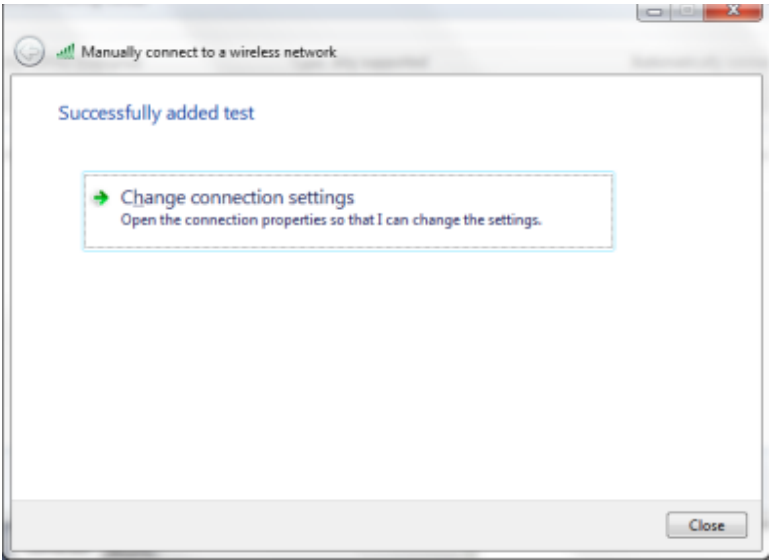
Click **Manually create a network profile**



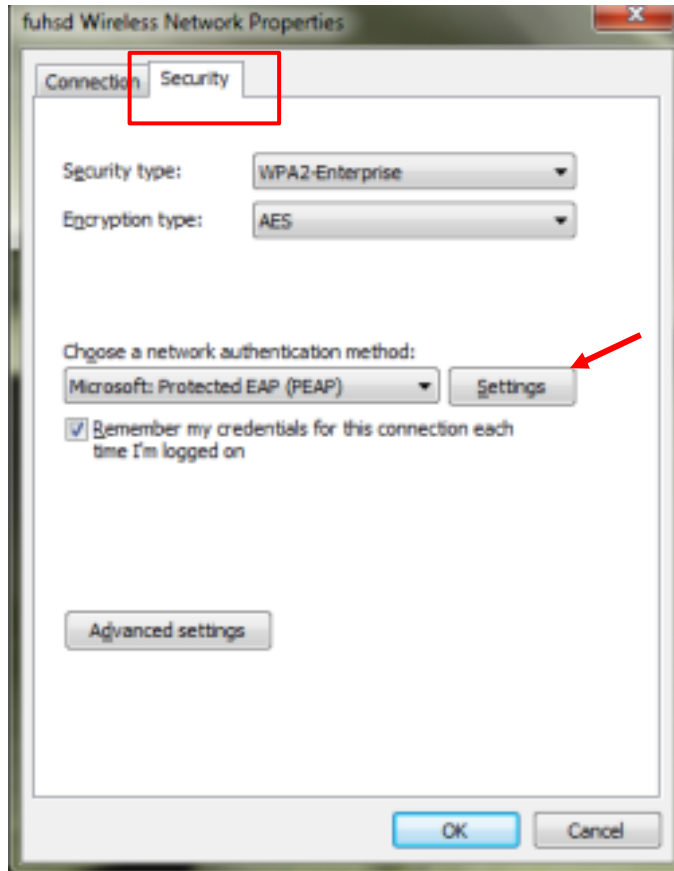
Name "fuhsd", select **WPA2-Enterprise**, check both boxes and click next



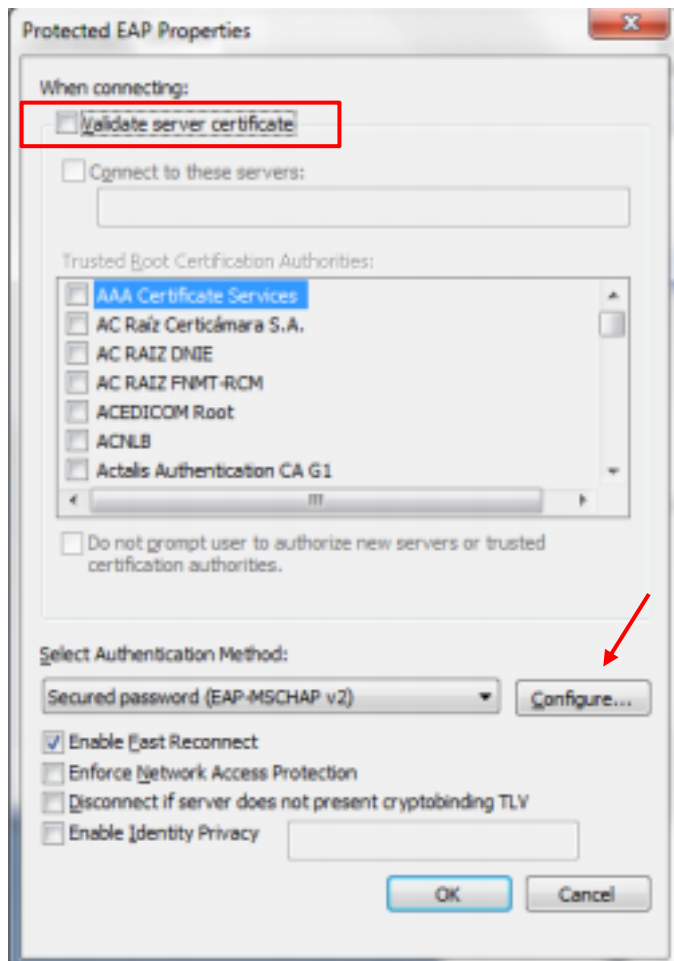
Select **Change connection settings**



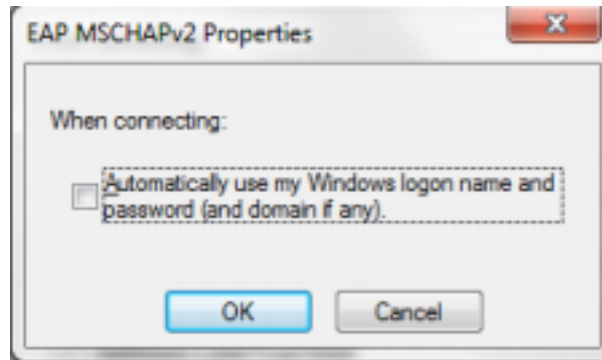
Select the **Security** tab and click **Settings** button



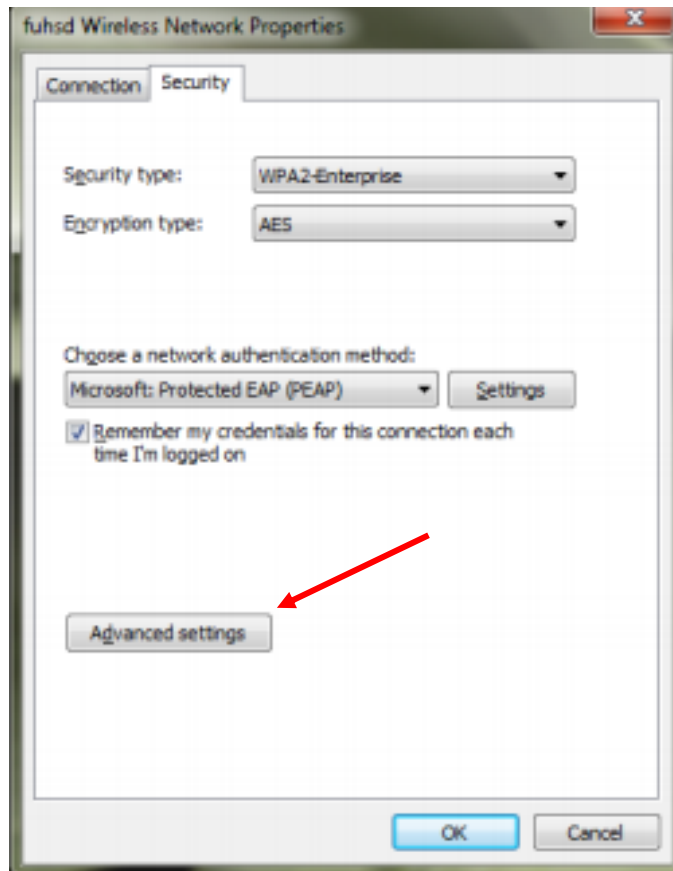
Uncheck **Validate server certificate**, then click **Configure**



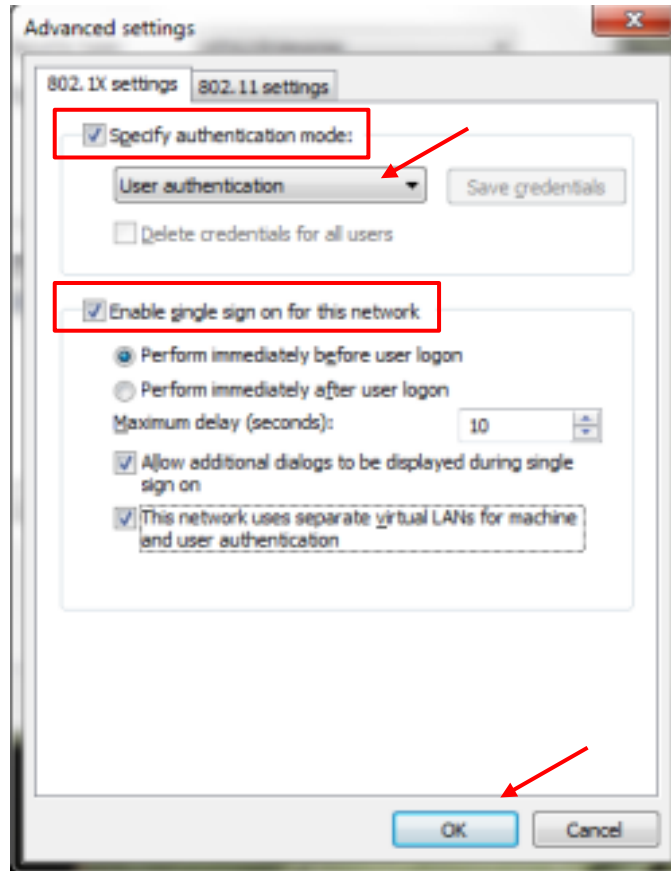
Uncheck **Automatically use my Windows logon name and password** and click OK. Click OK again.

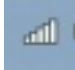


Click **Advanced settings** button



Check **Specify authentication mode** and select **User authentication**, then check **Enable single sign on for this network** and click OK.



Now you should be able to connect to the “fuhSD” network by clicking on the wireless icon  again and selecting fuhSD. It will prompt you with a username and password. Type in your domain\student number (for example, hhs\123456) and your personal password (the password you would use to log on to a library computer.)

*Sometimes the connection does not establish itself the first time and the username and password may need to be attempted a second or third time. The connection process may also take up to a few minutes before it confirms it's connected to the internet.

- [Windows 7 Wifi Connection to FUHSD Network PDF Instructions](#)
- [Windows 7 FUHSD Wifi Video Tutorial](#)

For Windows 8 and higher

Use **lynbrook\yourfuhSDid** as your username and the same password you use to log on to school computers.