A stylized graphic on the left side of the cover. It features a red outline of a person's head and shoulders in profile, facing right. The head is tilted back, and a large, jagged red lightning bolt shape is superimposed over the face. The background of the entire cover is a blue and white checkered pattern, tilted at an angle. A red diagonal band runs across the middle of the cover.

Washington High School Course Guide

2021-2022

TABLE OF CONTENTS

Franklin Pierce Schools Vision, Mission, Beliefs.....	3
Guidance, Counseling and Career Services	4
Graduation Requirements	5
Course Taking Policies, Procedures and Opportunities	6
NCAA Eligibility	7
Minimum College Entrance Requirements	11
Patriot Partnership.....	13
Four-Year Planning Sheet	14
Courses at a Glance 2020-2021	15
Advanced Placement Information	20
Advanced Placement Classes	20
Aerospace Science (JROTC).....	24
Art	25
Business	28
Career and Technical Education (CTE).....	27
Family and Consumer Science	31
Health/Physical Education	33
Job Experiences.....	35
Language Arts	35
Mathematics	38
Music	41
Science.....	43
Social Studies	45
Support Center	48
Theatre Arts Department	48
World Language Department.....	49
Additional Elective Classes	50
Pierce County Skills Center.....	52

FRANKLIN PIERCE SCHOOLS

Vision

Every Student graduates from high school prepared to succeed in post-secondary education.

Core Business

Engage all students in rigorous, relevant, high quality work.

Beliefs

- Every student can learn to think, reason, and achieve at high levels.
- Every student can learn more every day.
- Every student has potential for educational and economic success beyond high school.
- Every teacher is a “leader of learning” whose primary job is to engage students.
- Every school principal is a “leader of leaders”.
- Every staff member has the responsibility to support the core business.

Mission Statement

To provide students an engaging educational environment, built upon proven academics and high standards, resulting in successful and contributing citizens.

Goals

- Increase academic achievement of all students.
- Prepare students for success beyond high school.
- Maintain safe and caring schools.
- Promote family and community involvement in our schools.

Washington State Learning Goals

- Read with comprehension, write with skill, and communicate effectively and responsibly in a variety of ways and settings.
- Know and apply the core concepts and principles of mathematics; social, physical, and life sciences; civics, history, and geography; arts; and health and fitness.
- Think analytically, logically and creatively, and integrate experience and knowledge to form reasoned judgments and solve problems.
- Understand the importance of work and how performance, effort, and decisions directly affect future career and educational goals.

WASHINGTON HIGH SCHOOL

GUIDANCE, COUNSELING AND CAREER SERVICES

The mission of the Washington High School Counseling Program is to provide guidance and support to enable all students, regardless of individual differences, to acquire the self-knowledge, academic, post-secondary planning competencies necessary to succeed and contribute in a changing society.

The WHS Guidance Program includes:

1. **Guidance Curriculum** that consists of data-driven, developmentally appropriate activities designed to positively affect academic learning; life and career planning; personal and social; and multicultural and global citizenship.
2. **Individual Student Planning** to help students plan, monitor, and manage their own learning as well as their personal and career development.
3. **Responsive Services** to help meet the needs of immediate concerns of students requiring counseling, consultation, referral or information.
4. **System Support** to establish, maintain, and enhance the comprehensive guidance program.

Counselors are assigned to specific sections of the alphabet. Therefore, they work with students in all grades. For more information please contact:

Jamie Zapanta	Counselor A-G	253-298-4861	izapanta@fpschools.org
Eduardo Ortiz	Counselor H-O/Dept. Head	253-298-4736	eortiz@fpschools.org
Matthew Summers-Smith	Counselor P-Z	253-298-4735	msummerssmith@fpschools.org
Annie Plutko	Grad/Running Start Coach	253-298-4718	aplutko@fpschools.org
Bonnie Wiklund	Student Data Mgr.	253-298-4713	bwiklund@fpschools.org
Sheryl Moore	Career Specialist	253-298-4871	smoore@fpschools.org
Eileen Gatlin	Registration Coordinator	253-298-4734	egatlin@fpschools.org

The Guidance, Counseling and Career Department hours are 7:00am – 2:25pm

Parents are encouraged to contact their child's counselor to schedule an appointment with the counselor and/or to arrange parent teacher conferences.

GRADUATION REQUIREMENTS

In accordance with Franklin Pierce Schools Board Policy # 2410 students must have completed all requirements for graduation prior to receiving a diploma and participating in the graduation ceremony. **It is the responsibility of the student to ensure progress towards graduation is maintained and all requirements are met.**

GRADUATION REQUIREMENTS:

- ❖ Earn high school credit (see required credits below)
- ❖ Complete a High School and Beyond Plan/Culminating Project
- ❖ Pass state tests or approved alternatives

Credit: The State Board of Education has established the definition of a credit as a full year of course instruction. Washington High School students are graded on a semester basis therefore students who successfully complete one semester of coursework earn one-half (.5) credit. The school year consists of two semesters. Students have an opportunity to earn 3 credits per semester.

High School and Beyond Plan/Culminating Project: Students in Franklin Pierce Schools must successfully complete and present their portfolio to meet the state high school and beyond plan graduation requirement. During PATs Partnership students create a portfolio that showcases academic growth, career research and citizenship development. Students share the development of the portfolio with their parent/guardian at Student Led Conferences each year. Seniors present their portfolios to a community member panel.

Washington State History is required for graduation. If completed and passed in 7th/8th grade; this meets the state requirement.

Subject	Required Credits C/O eco2021 and Beyond
English	4
Mathematics	3
Science	3 (Must have 2 lab credits)
Social Studies	3
P.E.	1.5
Health	.5
Fine Arts	2 or (1 Fine Art & 1 Personal Pathway)
Career & Technical Ed. (CTE)	1
Electives	4
World Language or Personal Pathway	2
Total	24

COURSE TAKING POLICIES, PROCEDURES AND OPPORTUNITIES

Class Schedule

To take full advantage of the educational offerings, students are expected to be enrolled in six (6) classes per day. 11th and 12th graders may be granted an early release or late arrival only if requested by a parent or guardian and with the approval of a school counselor. All students are also assigned to a PAT's Partnership advisor or counselor who guides and monitors portfolio progress. Students who are participating in athletics will not be allowed to have an early dismissal during the sport season.

Schedule Changes

Students must submit a written schedule change request to their counselor by email or by completing a schedule change form. Schedule change requests must be submitted prior to the start of the new semester.

Grade Changes

Incompletes may be changed to a letter grade after twenty days at the completion of a semester with teacher permission. Incomplete grades will revert to "F" after that time. A building administrator must approve all other grade changes.

High School Credit Retrieval

Students with credit or course deficiencies will be required to make up the credit in order to meet graduation requirements. Credit recovery courses, summer school and correspondence course options may be available. Students with credit deficiencies should see their counselor for pre-approval and additional information.

CTE Dual Credit (formerly Tech Prep) courses offer students an opportunity to earn Community / Technical College credit while attending high school classes. Career and Technical Education (CTE) Dual Credit classes are taught at the high school or skills center and integrate academics with technical skills to help prepare students for advanced education and careers related to professional-technical occupations. High school students who complete selected high school courses with a grade of 'C' (2.0) or better can earn Community / Technical College credit. After June 30th of the summer after you have completed the required high school courses contact the PC3 office at 253-583-8803 for transcription of your CTE Dual credits. Contact your high school Career and Technical Education (CTE) teacher with questions about earning credit. More information about CTE Dual Credit can be found online at Pierce County Careers Connection www.pc3connect.com or Washington State Board for Community and Technical Colleges www.sbctc.edu/colleges-staff/programs-services/cte-dual-credit.

Running Start

Running Start offers qualified juniors and seniors the opportunity to earn high school graduation and college credits by taking approved courses at a community/technical college without paying tuition. To be eligible for this program, students must 1) have earned the credits necessary for junior or senior status; 2) demonstrate readiness for college-level study through their performance on a college placement exam; 3) meet course prerequisites. It is not usually advisable for students to try to transfer to the Running Start Program during the middle of the school year. The community/technical colleges are on a three quarter system that does not match starting times with our semesters. **Students planning to take Running Start courses during fall quarter must have the application process completed by early spring of the prior year.**

DIVISION I ACADEMIC REQUIREMENTS

College-bound student-athletes enrolling at an NCAA Division I school need to meet the following academic requirements to practice, compete and receive an athletics scholarship in their first year of full-time enrollment.

Core-Course Requirement

Complete 16 core courses in the following areas:

ENGLISH	MATH (Algebra I or higher)	NATURAL/ PHYSICAL SCIENCE (Including one year of lab, if offered)	ADDITIONAL (English, math or natural/physical science)	SOCIAL SCIENCE	ADDITIONAL COURSES (Any area listed to the left, foreign language or comparative religion/philosophy)
4 years	3 years	2 years	1 year	2 years	4 years

FULL QUALIFIER

- Complete 16 core courses.
 - Ten of the 16 core courses must be completed before the seventh semester (senior year) of high school.
 - Seven of the 10 core courses must be in English, math or natural/physical science.
- Earn a core-course GPA of at least 2.300.
- Earn an SAT combined score or ACT sum score matching the core-course GPA on the Division I sliding scale (see back page).
- Graduate high school.

ACADEMIC REDSHIRT

- Complete 16 core courses.
- Earn a core-course GPA of at least 2.000.
- Earn an SAT combined score or ACT sum score matching the core-course GPA on the Division I sliding scale (see back page).
- Graduate high school.

Full Qualifier

College-bound student-athletes may practice, compete and receive an athletics scholarship during their first year of full-time enrollment at an NCAA Division I school.

Academic Redshirt

College-bound student-athletes may receive an athletics scholarship during their first year of full-time enrollment and may practice during their first regular academic term, but may NOT compete during their first year of enrollment.

Nonqualifier

College-bound student-athletes will not be able to practice, compete or receive an athletics scholarship during their first year of full-time enrollment at an NCAA Division I school.

International Students

Please review the [international initial-eligibility flyer](#) for information and academic requirements specific to international student-athletes.

Click [here](#) for Division II academic requirements.



Test Scores

If a student plans to attend an NCAA Division I college or university in the 2019-20 or 2020-21 academic years, use the following charts to understand the core-course GPA he or she will need to meet NCAA Division I requirements.

A combined SAT score is calculated by adding critical reading and math subscores. An ACT sum score is calculated by adding English, math, reading and science subscores. A student may take the SAT or ACT an unlimited number of times before he or she enrolls full time in college. If a student takes either test more than once, the best subscores from each test are used for the academic certification process.

When a student registers for the SAT or ACT, he or she can use the NCAA Eligibility Center code of **9999** to send their scores directly to the NCAA Eligibility Center from the testing agency. Test scores on transcripts **CANNOT** be used in an academic certification.

DIVISION I FULL QUALIFIER SLIDING SCALE			DIVISION I FULL QUALIFIER SLIDING SCALE		
Core GPA	SAT*	ACT Sum*	Core GPA	SAT*	ACT Sum*
3.550	400	37	2.750	810	59
3.525	410	38	2.725	820	60
3.500	430	39	2.700	830	61
3.475	440	40	2.675	840	61
3.450	460	41	2.650	850	62
3.425	470	41	2.625	860	63
3.400	490	42	2.600	860	64
3.375	500	42	2.575	870	65
3.350	520	43	2.550	880	66
3.325	530	44	2.525	890	67
3.300	550	44	2.500	900	68
3.275	560	45	2.475	910	69
3.250	580	46	2.450	920	70
3.225	590	46	2.425	930	70
3.200	600	47	2.400	940	71
3.175	620	47	2.375	950	72
3.150	630	48	2.350	960	73
3.125	650	49	2.325	970	74
3.100	660	49	2.300	980	75
3.075	680	50	2.299	990	76
3.050	690	50	2.275	990	76
3.025	710	51	2.250	1000	77
3.000	720	52	2.225	1010	78
2.975	730	52	2.200	1020	79
2.950	740	53	2.175	1030	80
2.925	750	53	2.150	1040	81
2.900	750	54	2.125	1050	82
2.875	760	55	2.100	1060	83
2.850	770	56	2.075	1070	84
2.825	780	56	2.050	1080	85
2.800	790	57	2.025	1090	86
2.775	800	58	2.000	1100	86

ACADEMIC REDSHIRT

*Final concordance research between the new SAT and ACT is ongoing.

NCAA is a trademark of the National Collegiate Athletic Association.
September 2019

DIVISION II ACADEMIC REQUIREMENTS

College-bound student-athletes enrolling at an NCAA Division II school need to meet the following academic requirements to practice, compete and receive an athletics scholarship in their first year of full-time enrollment.

Core-Course Requirement

Complete 16 core courses in the following areas:

ENGLISH	MATH (Algebra I or higher)	NATURAL/ PHYSICAL SCIENCE (including one year of lab, if offered)	ADDITIONAL (English, math or natural/physical science)	SOCIAL SCIENCE	ADDITIONAL COURSES (Any area listed to the left, foreign language or comparative religion/philosophy)
3 years	2 years	2 years	3 year	2 years	4 years

FULL QUALIFIER

- Complete 16 core courses.
- Earn a core-course GPA of at least 2.200.
- Earn an SAT combined score or ACT sum score matching the core-course GPA on the Division II full qualifier sliding scale (see back page).
- Graduate high school.

PARTIAL QUALIFIER

- Complete 16 core courses.
- Earn a core-course GPA of at least 2.000.
- Earn an SAT combined score or ACT sum score matching the core-course GPA on the Division II partial qualifier sliding scale (see back page).
- Graduate high school.

Full Qualifier

College-bound student-athletes may practice, compete and receive an athletics scholarship during their first year of full-time enrollment at an NCAA Division II school.

Partial Qualifier

College-bound student-athletes may receive an athletics scholarship during their first year of enrollment and may practice during their first year of full-time enrollment at a Division II school, but may NOT compete.

Nonqualifier

College-bound student-athletes will not be able to practice, compete or receive an athletics scholarship during their first year of full-time enrollment at an NCAA Division II school.

International Students

Please review the [international initial-eligibility flyer](#) for information and academic requirements specific to international student-athletes.

Click [here](#) for Division I academic requirements.



DIVISION II FULL QUALIFIER SLIDING SCALE		
Core GPA	SAT*	ACT Sum*
3.300 & above	400	37
3.275	410	38
3.250	430	39
3.225	440	40
3.200	460	41
3.175	470	41
3.150	490	42
3.125	500	42
3.100	520	43
3.075	530	44
3.050	550	44
3.025	560	45
3.000	580	46
2.975	590	46
2.950	600	47
2.925	620	47
2.900	630	48
2.875	650	49
2.850	660	49
2.825	680	50
2.800	690	50
2.775	710	51
2.750	720	52
2.725	730	52
2.700	740	53
2.675	750	53
2.650	750	54
2.625	760	55
2.600	770	56
2.575	780	56
2.550	790	57
2.525	800	58
2.500	810	59
2.475	820	60
2.450	830	61
2.425	840	61
2.400	850	62
2.375	860	63
2.350	860	64
2.325	870	65
2.300	880	66
2.275	890	67
2.250	900	68
2.225	910	69
2.200	920	70 & above

DIVISION II PARTIAL QUALIFIER SLIDING SCALE		
Core GPA	SAT*	ACT Sum*
3.050 & above	400	37
3.025	410	38
3.000	430	39
2.975	440	40
2.950	460	41
2.925	470	41
2.900	490	42
2.875	500	42
2.850	520	43
2.825	530	44
2.800	550	44
2.775	560	45
2.750	580	46
2.725	590	46
2.700	600	47
2.675	620	47
2.650	630	48
2.625	650	49
2.600	660	49
2.575	680	50
2.550	690	50
2.525	710	51
2.500	720	52
2.475	730	52
2.450	740	53
2.425	750	53
2.400	750	54
2.375	760	55
2.350	770	56
2.325	780	56
2.300	790	57
2.275	800	58
2.250	810	59
2.225	820	60
2.200	830	61
2.175	840	61
2.150	850	62
2.125	860	63
2.100	860	64
2.075	870	65
2.050	880	66
2.025	890	67
2.000	900	68 & above

Test Scores

If a student plans to attend an NCAA Division II college or university in the 2019-20 or 2020-21 academic years, use the following charts to understand the core-course GPA he or she will need to meet NCAA Division II requirements.

A combined SAT score is calculated by adding critical reading and math subscores. An ACT sum score is calculated by adding English, math, reading and science subscores. A student may take the SAT or ACT an unlimited number of times before he or she enrolls full time in college. If a student takes either test more than once, the best subscores from each test are used for the academic certification process.

*Final concordance research between the new SAT and ACT is ongoing.

NCAA is a trademark of the National Collegiate Athletic Association.
September 2019

College Entrance Requirements

MINIMUM COLLEGE ADMISSIONS STANDARDS at Washington's Public Four-Year Colleges

**READY
SET
GRAD**



REQUIRED CREDITS

- ☐ 4 credits of English
- ☐ 3 credits of math including Algebra II or Integrated Math III
- ☐ Senior year quantitative math
- ☐ 3 credits of social science
- ☐ 2 credits of science
- ☐ 2 credits of world languages
- ☐ 1 credit of arts



GPA

- ☐ Maintain at least a 2.0 grade point average



SAT and ACT

- ☐ Take the SAT or ACT
- ☐ Have the scores sent directly to the colleges you want to attend

Some colleges have additional requirements.



Explore colleges you're interested in to see if they require more than the minimum.

What if you don't meet these standards?

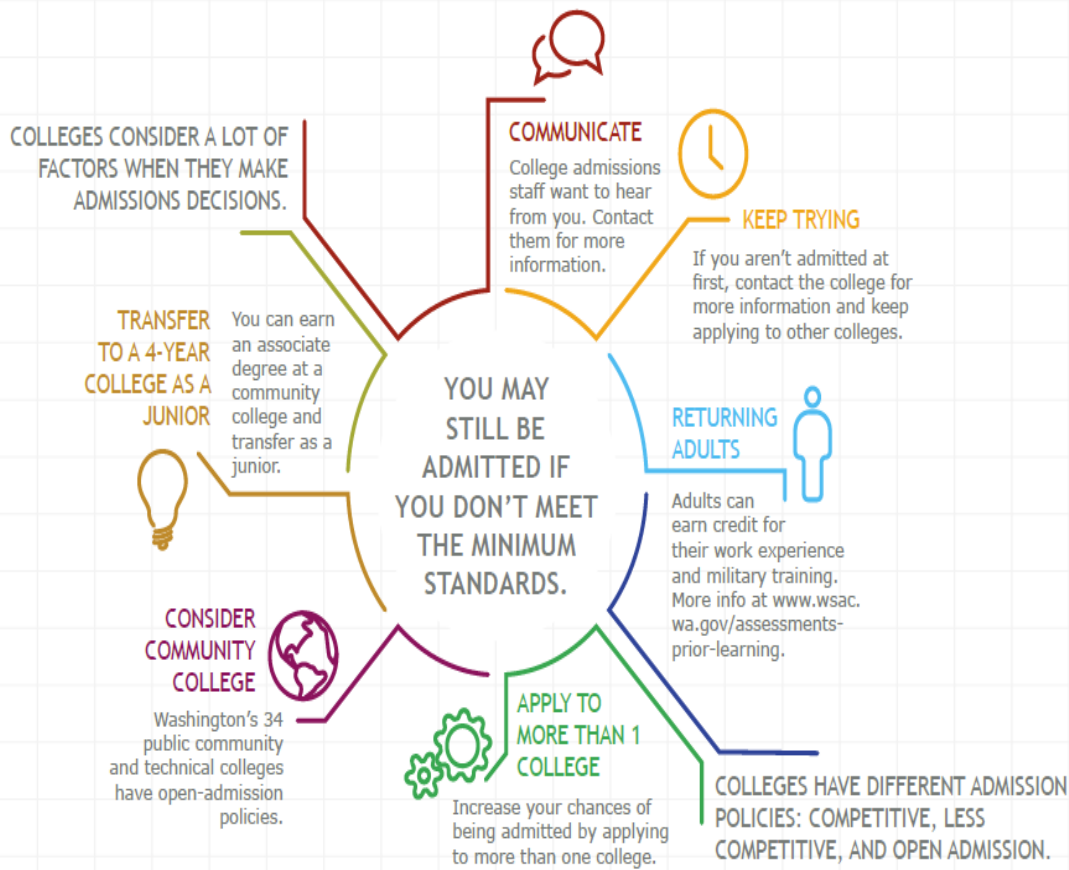
Meeting the minimum college admission standards does not guarantee admission to a public four-year college.

FACT: Continuing your education after high school is a necessity in today's economy. For more on college readiness and financial aid, visit www.readysetgrad.org, your resource to find, pay for, and complete the educational path that's right for you.

 **WASHINGTON STUDENT
ACHIEVEMENT COUNCIL**
EDUCATION • OPPORTUNITY • RESULTS

You have options.

Even if you don't meet the minimum standards.



RESOURCES: WWW.READYSETGRAD.ORG | WWW.K12.WA.US | WWW.SBE.WA.GOV | WWW.WSAC.WA.GOV

Patriot Partnership (PATs)

This program will help support students' success throughout high school and the development of the High School and Beyond Plan/Culminating Project. The advisory curriculum helps students further develop a personalized College and Career Readiness Plan. Advisories (PATs Partnership) meet every week to work on tasks related to the development of student portfolios.

PATs Partnership will enable students to:

- manage his/her 4-year plan
- plan educational and career goals
- explore post-secondary educational and career opportunities
- maintain a portfolio of their progress toward goals

The student portfolio will enable students to keep a record of their progress in these areas:

- student as learner
- student as citizen
- student as planner

Twice yearly students present their academic, citizen and planner accomplishments using their portfolios at the Student Led Conference (SLC). The culminating project (as required by district for graduation) is a presentation of the completed portfolio at the Senior Presentations.

Patriot Partnership is a Pass/Fail class. Students earn a .25 credit at the end of each year for completing all grade level requirements.

Washington High School C/O 2021-22 Four-Year Planning Sheet



Name: _____ Date: _____

<input type="checkbox"/> 4 English credits	<input type="checkbox"/> 0.5 Health credit
<input type="checkbox"/> 3 Social Studies credits	<input type="checkbox"/> 2 Fine Arts credit or 1 Fine Art & 1 Personal Pathway
<input type="checkbox"/> 3 Math credits	<input type="checkbox"/> 1 CTE credit
<input type="checkbox"/> 3 Science credits	<input type="checkbox"/> 4 Elective credits
<input type="checkbox"/> 1.5 PE credits	<input type="checkbox"/> 2 World Language or Personal Pathway
=24 credits to graduate	

Four Year College admission requires 2 years of World Language and senior year math requirement.

Freshman Year

First Semester	Second Semester
English or Pre AP	English or Pre AP
Math	Math
Science	Science
Intro to PE	Health

Sophomore Year

First Semester	Second Semester
English or Pre AP	English or Pre AP
World History or AP World	World History or AP World
Math	Math
Science	Science

Junior Year

First Semester	Second Semester
English or AP Lang. & Comp	English or AP Lang. & Comp
US History or AP US Hist.	US History or AP US Hist.
Math	Math
Science	Science

Senior Year

First Semester	Second Semester
English or AP Literature	English or AP Literature
Civics or AP Govt.	Civics or AP Govt.

WHS COURSES AT A GLANCE 2021-2022

<i>Course</i>	<i>page</i>	<i>Graduation Requirement</i>	<i>Grade Level</i>	<i>1st Sem. Course No.</i>	<i>2nd Sem. Course No.</i>
Advanced Placement Classes		pg. 20			
AP Art Studio 1,2		Fine Arts/CTE	10th-12th	FNA131	FNA132
AP Biology 1,2		Science	11th-12th	SCI131	SCI132
AP Calculus 1,2		Math	11 th -12th	MTH631	MTH632
AP Chemistry 1,2		Science	11 th -12th	SCI331	SCI332
AP Computer Science 1,2		CTE/Math (3 rd Yr)	10 th -12th	TEC231	TEC232
AP English Lang/Comp 1,2		Language Arts	11th	ENG331	ENG332
AP English Lit/Comp 1,2		Language Arts	12th	ENG431	ENG432
AP Environmental Science		Science	12th	SCI433	SCI434
AP US Government & Politics (CWP, Civics) 1,2		Social Studies	12th	SST431	SST432
AP Psychology 1,2		Social Studies/CTE	11 th -12th	SST633	SST634
AP Spanish 1,2		World Language	10 th -12th	WRL231	WRL232
AP Statistics 1,2		Math	12th	MTH635	MTH636
AP U.S. History 1,2		Social Studies	11th	SST331	SST332
AP World History 1,2		Social Studies	10th	SST231	SST232
Aerospace Science (JROTC)		pg. 24			
Cultural Studies: Intro. to Global Awareness 1&2		CTE	10th-12th	FLT213	FLT214
Drill and Ceremonies		CTE/PE	9th-12th	FLT611	FLT611
Exploring Space, The High Frontier 1&2		CTE	10th-12th	FLT311	FLT312
Management of the Cadet Corps & Leadership 1,2		CTE	12th	FLT413	FLT414
Milestones into Aviation History & Leadership 1,2		CTE	9 th -11th	FLT111	FLT112
Business & Marketing		pg. 28			
Business Management/Entrepreneurship 1&2		CTE	9-12	BUS111	BUS112
Introduction to Computer Science 1,2		CTE/Math (3 rd yr)	9 th -12th	TEC113	TEC114
Financial Literacy		CTE / Math (3 rd yr)	9 th -12th	BUS211	BUS211

Graphic Design	CTE /Fine Arts	9 th -12 th	ATC321	ATC321
Yearbook 1, 2	CTE	10 th -12 th	ATC401	ATC402
Family & Consumer Science pg. 31				
Culinary Arts Beginning	CTE	9 th -12 th	FCS111	FCS111
Culinary Arts Advanced	CTE	10 th -12 th	FCS113	FCS113
Independent Living	CTE	10 th -12 th	FCS311	FCS311
Early Childhood Education	CTE	10 th -12 th	FCS211	FCS211
Fine, Visual and Performing Arts pg. 25 & 48				
AP Studio Art 1,2	Fine Arts/CTE	10 th -12 th	FNA131	FNA132
Beginning Piano/Keyboarding	Fine Arts	9 th -12 th	FNA601	FNA601
Choir Intermediate	Fine Arts	9 th -12 th	FNA313	FNA314
Choir Advanced 1,2	Fine Arts	10 th -12 th	FNA315	FNA316
Digital Photography Beginning	Fine Arts/CTE	9 th -12 th	ATC301	ATC301
Digital Photography Advanced	Fine Arts/CTE	9 th -12 th	ATC302	ATC302
Drama	Fine Arts	9 th -12 th	FNA211	
Drama Advanced 3,4	Fine Arts	10 th -12 th	FNA213	FNA214
History of Rock & Roll	Fine Arts	9 th -12 th	FNA571	FNA571
Instrumental Jazz Ensemble 1,2	Fine Arts	9 th -12 th	FNA419	FNA420
Percussion Ensemble Beginning 1,2	Fine Arts	9 th -12 th	FNA417	FNA418
Percussion Ensemble 1,2	Fine Arts	9 th -12 th	FNA427	FNA428
Percussion Ensemble Advanced	Fine Arts	9 th -12 th	FNA437	FNA438
Pottery	Fine Arts/CTE	9 th -12 th	FNA117	FNA117
Screen Printing Beginning	Fine Arts/CTE	9 th -12 th	FNA115	FNA115
Screen Printing Advanced	Fine Arts/CTE	9 th -12 th	FNA125	FNA125
Steel Drums Ensemble Beginning 1,2	Fine Arts	9 th -12 th	FNA611	FNA612
Steel Drums Advanced 1,2	Fine Arts	10 th -12 th	FNA621	FNA622
Ukelele	Fine Arts	9 th -12 th	FNA617	
Visual Arts Design	Fine Arts	9 th -12 th	FNA111	FNA 111
Wind Ensemble 1,2	Fine Arts	9 th -12 th	FNA415	FNA416
Additional Electives Pg. 50				
AP Psychology 1, 2	Social Studies/Elective	11 th -12 th	SST633	SST634

AVID	Elective	9 th -12 th	9=ELE123 10=ELE223 11=ELE323 12=ELE423	9=ELE124 10=ELE224 11=ELE324 12=ELE424
Community Based Learning	Elective	9 th -12 th	ELE301	ELE302
Counseling & Career Center Assistant	Elective	11 th -12 th	CIE103	CIE104
Leadership-Advanced 1, 2	Elective	10 th -12 th	ELE231	ELE232
Learning Strategies (assigned by special services)	Elective	9 th -10 th	ELE103	ELE104
Advanced Learning Strategies (assigned by special services)	Elective	11 th -12 th	ELE105	ELE106
Main Office Assistant	Elective	11 th -12 th	CIE101	CIE102
Support Center	Elective	9 th -12 th	ELE201	ELE202
Teacher Assistant	Elective	11 th -12 th	CIE107	CIE108
Tools for Success (assigned by special services)	Elective	9 th -12 th	ELE101	ELE102
Health & Fitness	pg.33 To earn PE credit through varsity sport: lettering in the same varsity sport for 2 yrs; must have a 2.50 GPA; completion of health class; and verification from the Athletic Director.			
Family Health	Health/CTE	9 th -12 th	HPE111	HPE111
Intro to PE	PE	9 th -10 th	HPE112	HPE112
Advanced PE	PE	9 th -12 th	HPE122	HPE122
Unified PE	PE	9 th -12 th	HPE100	HPE100
Language Arts	pg. 35			
AP English Lang/Comp 1, 2	Language Arts	11 th	ENG331	ENG332
AP English Lit/Comp 1, 2	Language Arts	12 th	ENG431	ENG432
Bridge to College English 1, 2	Language Arts	12 th	ENG423	ENG424
ELL Level 1	Language Arts	9 th -12 th	ENG521	ENG522
ELL Level 2	Language Arts	9 th -10 th	ENG523	ENG524
ELL Level 3	Language Arts	11 th -12 th	ENG525	ENG 526
Freshman English 1,2	Language Arts	9 th	ENG111	ENG112
Freshman English (Advanced) 1,2	Language Arts	9 th	ENG 121	ENG122
Freshman Language Arts	Language Arts	9 th	ENG101	ENG102
Junior Bridge Prep 1, 2	Language Arts	11 th	ENG323	ENG324
Junior English 1, 2	Language Arts	11 th	ENG311	ENG312
Junior Language Arts	Language Arts	11 th	ENG301	ENG302
Reading Lab (Read to Achieve)	Language Arts	9 th -12 th	ENG501	ENG502

Sophomore English 1, 2	Language Arts	10 th	ENG211	ENG212
Sophomore Language Arts	Language Arts	10 th	ENG201	ENG202
Sophomore English (Advanced)1, 2	Language Arts	10 th	ENG221	ENG222
Senior Language Arts	Language Arts	12 th	ENG401	ENG402
Mathematics pg. 38				
Algebra 1,2	Math	9 th -12 th	MTH111	MTH112
Advanced Algebra 3,4	Math	9 th -12 th	MTH321	MTH322
AP Calculus 1,2	Math	11 th -12 th	MTH631	MTH632
AP Statistics 1,2	Math	12 th	MTH635	MTH636
Basic Math 1,2	Math	9 th -12 th	MTH101	MTH102
Basic Math 3,4	Math	9 th -12 th	MTH201	MTH202
Pre-Algebra 1,2	Math	10 th -12 th (9 th by recommendation only)	MTH301	MTH302
Pre-Algebra 3,4	Math	10 th -12 th (9 th by recommendation only)	MTH401	MTH402
Bridge to College Math 1,2	Math	12 th	MTH423	MTH424
Consumer Math 1,2	Math	11 th -12 th	MTH601	MTH602
Geometry 1,2	Math	9 th -12 th	MTH211	MTH212
Intermediate Algebra 1,2	3 rd Year Mathematics	11 th -12 th	MTH313	MTH314
Pre-Calculus 1,2	Math	10 th -12 th	MTH411	MTH412
Science <i>(All courses are lab science)</i> pg. 43				
AP Biology 1,2	Science	11 th -12 th	SCI131	SCI132
AP Chemistry 1,2	Science	12 th	SCI331	SCI332
AP Environmental Science 1,2	Science	12 th	SCI433	SCI434
Biology 1, 2	Science	9 th	SCI111	SCI112
Biology Advanced	Science	9 th	SCI121	SCI122
Chemistry 1, 2	Science	11 th -12 th	SCI311	SCI312
Chemistry Advanced 1,2	Science	11 th	SCI321	SCI322
ECO Design 1,2 (2 period block class)	CTE/Science (Biology, Lab Science)	9 th -12 th	SCI621	SCI622
Physics 1,2	Science	12 th	SCI411	SCI412
Physical Science 1,2	Science	10 th	SCI211	SCI212
Physical Science Advanced 1,2	Science	10 th	SCI221	SCI222

Social Studies pg. 45				
AP Psychology 1,2	Social Studies/CTE	11 th -12 th	SST633	SST634
AP US Government & Politics 1, 2	Social Studies	12 th	SST431	SST432
AP Human Geography	Elective	9 th	SST131	SST132
AP U.S. History 1, 2	Social Studies	11 th	SST331	SST332
AP World History 1, 2	Social Studies	10 th	SST231	SST232
Civics/CWP 1, 2	Social Studies	12 th	SST411	SST412
Ethnic Studies	Social Studies	12 th	SST617	SST617
U.S. History 1, 2	Social Studies	11 th -12 th	SST311	SST312
Washington State History	Elective-requirement for graduation	12 th	SST611	SST611
World History 1, 2	Social Studies	10 th	SST211	SST212
Career & Technical Education (CTE) pg. 27				
Aerospace Manufacturing 1,2	CTE/3 rd Year Math	10 th -12 th	TEC213	TEC214
Aerospace Manufacturing Advanced 3, 4	CTE/3 rd Year Math	11 th -12 th	TEC313	TEC314
AP Computer Science A1, 2	CTE	10 th -12 th	TEC231	TEC232
AP Psychology 1,2	Social Studies/Social Studies	11 th -12 th	SST633	SST634
Biomedical Innovations 1,2	CTE/Science (Lab)	11 th -12 th	SCI415	SCI416
Construction Trades Pre-Apprenticeship 1,2	CTE/Math (3 rd yr)	10 th -12 th	ARC111	ARC112
Digital Photography Beginning	CTE / Fine Arts	9 th -12 th	ATC301	ATC301
Digital Photography Advanced	CTE / Fine Arts	9 th -12 th	ATC302	ATC302
Human Body Systems 1,2	CTE/Science (Lab)	10 th -12 th	SCI215	SCI216
Intro. Engineering Design 1,2	CTE/ 3 rd Year Mathematics	9 th -12 th	TEC111	TEC112
Medical Interventions 1,2	CTE/Science (Lab)	11 th -12 th	SCI315	SCI316
Pierce County Skills Center 1,2	CTE or Other	11 th -12 th	PCS01 (3 periods)	PCS02 (3 periods)
Principles of Biomedical Sciences 1,2	CTE/Health/Science (Lab)	10 th -12 th	SCI115	SCI116
Robotics Technology	CTE/Elective	9 th -12 th	TEC115	TEC115
Teaching Academy 1,2	CTE/Elective	11 th & 12 th	CIE311	CIE312
TV Production 1,2	CTE/Fine Arts	9 th -12 th	ATC201	ATC202
Video Editing 1,2	CTE/Fine Arts	10 th -12 th	ATC211	ATC212
Yearbook 1, 2	CTE/Fine Arts	10 th -12 th	ATC401	ATC402
World Languages pg.49				

AP Spanish 1, 2	Elective/World Language	10 th -12 th	WRL231	WRL232
Spanish 1,2,3,4,5,6	Elective/World Language	9 th -12 th	WRL101,103,105	WRL102,104, 106
American Sign Language 1, 2	Elective/CTE/World Language	9 th -12 th	WRL111	WRL112
American Sign Language 3,4	Elective/CTE/World Language	10 th -12 th	WRL113	WRL114
American Sign Language 5,6	Elective/CTE/World Language	11 th -12 th	WRL115	WRL116

Advanced Placement Information

Advanced Placement tests are administered in May. Cost is covered by the school district. AP tests are **mandatory** for some of the courses listed. Students are encouraged to consult with an instructor in respective classes regarding course requirements. College credit may be earned depending upon test score.

What Are Advanced Placement (AP) Classes?

It is a program based on the fact that many young people can complete college-level studies in the secondary school. At the completion of the course each student may take the Advanced Placement examination and by scoring at a designated level, the student may earn college credit when entering college.

What Are The Advantages Of Taking The AP Examination?

Taking AP examinations may include the following benefits:

1. Exemption by your college or university from beginning courses and permission to take higher level courses in certain fields.
2. Academic credit for exams taken, which means fewer graduation requirements.
3. Tuition savings - up to a year of credit may be given for three or more qualifying AP grades.
4. Time to explore undergraduate subject areas that you wouldn't otherwise be able to study.
5. Eligibility for honors and other special programs open to students who have received AP recognition.
6. To increase your individual skills.

If I Don't Plan On Attending College, Then The AP Program Is No Benefit For Me, Right?

Wrong, this program is also for the student who wants to learn advanced skills in various classes. It will continually challenge you and you will not only be competing against yourself, but you will also be learning from the best students in your school. Because of the successful completion of an AP course, your chances on the job market will definitely be enhanced.

When Should I Start Planning If I Have An Interest In An AP Course?

Do it now! Look at the prerequisites and make sure you complete these classes with high grades or you may not be accepted into the AP class. If you are interested, be sure to tell your counselors so they can help you establish a schedule that will benefit you.

How Are Students Selected If They Want To Take An AP Course?

Criteria shall include cumulative GPA, grades in previous classes, scores in standardized tests, recommendation from counselor, parent approval and Lexile reading score.

Advanced Placement

AP Art Studio 1&2

Full Year, Grades 10,11,12

Course Number: FNA131,132

Dual Credit-CTE, credit by Exam

Graduation Requirement: CTE and Arts

Prerequisites: Teacher permission required.

The Advanced Placement Studio Art course provides students with a learning experience equivalent to that of an introductory college course in studio art foundation. In this course students will focus on career exploration in the fields of Design and Professional Production Arts. This course focuses on the theories, methods and techniques and must include the areas of glass, metal, ceramic, wood, polymers, and mixed media. Includes instruction in core art EALRs, design, concepts sketching, technical drawing, and color theory. Students will create a portfolio of work in at least one of three areas of study: Drawing, 2-D Design, or 3-D design. This body of work can be used to meet college admission portfolio requirements and will be assessed by the College Board for Advanced Placement, in lieu of an examination. *Students who earn a grade 'C' (2.0) or better in this course can earn a college credit. This course may fulfill a Career & Technical Education (CTE), Art, or an Elective credit.*

AP Biology 1&2

Full Year, Grades 11,12

Course Number: SCI131,132

Prerequisites: Received a B or better in both semesters of Advanced Physical Science

This course is designed to be the equivalent of a year-long introductory biology course taken at a 4-year college. It differs significantly from lower-level science classes with respect to the depth and breadth of concepts covered, the kind of textbook used, the kind of laboratory activities done, and the effort and time that will be required of students. This course will greatly assist students in their preparation for college study and is highly recommended for students interested in a career in science or medical careers, or who simply enjoy Biology.

AP Calculus 1&2

Full year, Grade 11,12

Course Number: MTH631, 632

Prerequisites: A grade of C or better in Pre-Calculus 1 and 2

AP Calculus is equivalent to the first year of college calculus. Students will study differential and integral calculus along with elementary functions. This course will mathematically challenge students while allowing them the opportunity to earn college credit. It is highly recommended for any student planning a career in science, engineering or mathematics. This class is a full year commitment, and students are required to take the AP exam in May. Students will need a graphing calculator (TI-84 Plus) for this course.

AP Chemistry 1&2

Full Year, Grade 12

Course Number: SCI331, 332

Prerequisites: Received a B or better in both semesters of Chemistry or Advanced Chemistry

This course is designed to be the equivalent of a year-long introductory chemistry course taken at a 4-year college. It differs significantly from lower-level science classes with respect to the depth and breadth of concepts covered, the kind of textbook used, the kind of laboratory activities done, and the effort and time that will be required of students. This course will greatly assist students in their preparation for college study and is highly recommended for students interested in science or medical careers, or who simply enjoy Chemistry.

AP Computer Science 1&2

Full Year, Grades 10,11,12

Course Number: TEC231,232

Dual Credit- CTE, Credit by Exam

Graduation Requirement: CTE and Mathematics (3rd Year)

Prerequisites: Introduction to Computer Science or teacher permission.

This course focuses on the general writing and implementation of generic and customized programs to drive operating systems and that generally prepares individuals to apply the methods and procedures of software design and programming to software installation and maintenance. Includes instruction in software design, low- and high-level languages and program writing; program customization and linking; prototype testing; troubleshooting; and related aspects of operating systems and networks. Students who earn a grade of 'C' (2.0) or better in this course can earn college credit. This course may fulfill a Career & Technical Education (CTE), Mathematics, or an Elective credit.

AP English Language & Composition 1&2

Full year, Grade 11

Course Number: ENG331,332

Prerequisites: None

Speaking and Listening skill development is a critical component of this course. The primary goal of the course is to develop an awareness of language and to sharpen skills in essay development, language analysis, and critical reading. A secondary goal of this course is to prepare students to be successful in college English courses. Students are encouraged to develop individual styles adaptable to different audiences. The course will include an in-depth study of style and focus on the analysis of prose; it will also require independent reading and analysis of texts outside of class time. Throughout the year, students will be introduced to the semantic, structural, and rhetorical resources of the language. The AP test given in May is required of all students enrolled in this class. College credit may be received from taking the AP test.

AP English Literature & Composition 1&2

Full year, Grade 12

Course Number: ENG431,432

Prerequisites: None

Speaking and Listening skill development is a critical component of this course. In Advanced Placement English students are engaged in the careful reading of literary works. Through this study, they will sharpen their awareness of language and their understanding of the writer's craft. They will also develop critical standards for the independent appreciation of any literary work and they will increase their sensitivity to literature. To achieve this, students will study individual works, the language, characters, action and theme of the works. Students will consider structure, meaning, and value as related to contemporary mores of critical analysis. Students must enjoy reading novels, plays, poetry, essays and short stories. There will be independent reading assignments and regular homework that will have to be completed outside of class time. Students are required to take the AP test given in May. College credit may be received from taking the AP test.

AP Environmental Science 1&2

Full year, Grade 12

Course Number: SCI433,434

Prerequisites: Has taken Principles of Lab Science and Biology or has taken Pre-AP Biology and Chemistry.

Explore and investigate the inter-relations of the natural world, environmental issues, and possible solutions in solving and preventing them.

AP US Government & Politics (CWP & Civics) 1&2

Full year, Grade 12

Course Number: SST431,432

Prerequisites: Senior Status, subject to teacher approval

Recommended: AP United States History

AP United States Government and Politics introduces students to key political ideas, institutions, policies, interactions, roles, and behaviors that characterize the political culture of the United States. The course examines politically significant concepts and themes, through which students learn to apply disciplinary reasoning assess causes and consequences of political events, and interpret data to develop evidence-based arguments. Students are required to take the AP Exam in May. College credit depends on AP exam score and individual college standards. This is a year-long course completing the requirement for CWP second semester.

AP Psychology 1&2

Full Year, Grades 11,12

Course Number: SST633,634

This course is designed to be the equivalent of a college introductory psychology class. This psychology course is designed to introduce you to the systematic and scientific study of the behavior and mental processes of human beings and other animals. You will be exposed to the psychological facts, principles, and phenomena associated with each of the major subfields within psychology. You will also learn about the

ethics and methods psychologists use in their science and practice. This class is a full year commitment, and students are required to take the AP exam in May. College credit may be received from taking the AP test.

AP Spanish 1&2

Full year, Grades 10,11,12

Course Number: WRL231,232

Prerequisites: Permission of teacher/counselor and/or completion of a minimum three years of language study.

Heritage speakers will be encouraged to take 3rd year Spanish before entering into AP.

Subject material will involve extensive reading and writing in the target language in addition to exclusive use of Spanish. This will be the equivalent of 300-level course work at a college/university. The course load is that of a 300-level college course.

AP Statistics 1&2

Full year, Grade 12

Course Number: MTH635,636

Prerequisites: A grade of "C" or better in Algebra 3/Trigonometry and in Pre-Calculus 1 and 2

Statistics acquaints students with the major concepts and tools for collecting, analyzing, and drawing conclusions from data. Students will frequently work on projects involving the hands-on gathering and analysis of real-world data. Ideas and computations presented in this course have immediate links and connections with actual events. This class is a full year commitment, and students are required to take the AP exam in May. Four broad conceptual themes include:

- * Exploring Data: Observing patterns and departures from patterns.

- * Planning a Study: Deciding what and how to measure.

- * Anticipating Patterns: Producing models using probability and simulation.

- * Statistical Inference: Confirming models.

Students will need a graphing calculator (T1-84 Plus) for this course.

AP United States History 1&2

Full year, Grade 11

Course Number: SST331,332

Prerequisites: Junior Status, subject to teacher approval

Recommended: AP World History, pre-AP Sophomore English

AP United States History focuses on developing students' abilities to think conceptually about U.S. history from approximately 1491 to the present and apply historical thinking skills as they learn about the past. Seven themes of equal importance — identity; peopling; politics and power; work, exchange, and technology; America in the world; environment and geography; and ideas, beliefs, and culture — provide areas of historical inquiry for investigation throughout the course. These require students to reason historically about continuity and change over time and make comparisons among various historical developments in different times and places. Students are required to take the AP exam in May. College credit depends on AP exam score and individual college standards.

AP World History 1&2

Full Year, Grade 10

Course Number: SST231,232

Prerequisites: Sophomore Status, subject to teacher approval

Recommended: AP Human Geography, pre-AP Freshman English

AP World History focuses on developing students' abilities to think conceptually about world history from approximately 1200 CE to the present and apply historical thinking skills as they learn about the past. Five themes of equal importance — focusing on the environment, cultures, state-building, economic systems, and social structures — provide areas of historical inquiry for investigation throughout the course. AP World History encompasses the history of the five major geographical regions of the globe: Africa, the Americas, Asia, Europe, and Oceania, with special focus on historical developments and processes that cross multiple regions. Students are required to take the AP Exam in May. College credit depends on AP exam score and individual college standards.

JROTC

AFJROTC Drill and Ceremonies

Semester, Grades 9,10,11,12

Course Number: FLT611

Dual Credit: No

Graduation Requirement: CTE, Physical Education and Arts

Prerequisites: Must currently be enrolled in an AFJROTC academic course.

Students already enrolled in AFJROTC may also take this zero-hour course. In Drill and Ceremonies students will learn advanced drill & ceremonies and creatively develop exhibition drill maneuvers in preparation for several performances throughout the year. Students compete and are judged at Northwest Drill & Rifle League competitions. Normally, two of the competitions require an overnight stay and the students are responsible for their portion of the hotel stay (normally \$40) and the cost of food while traveling. *This course may fulfill a Career & Technical Education (CTE), Physical Education (0.5), Art (0.5), or an Elective credit.*

AFJROTC Management of the Cadet Corps and Leadership 1&2 (AS400/LE400)

Full Year, Grade 12

Course Number: FLT413,414

Dual Credit: No

Graduation Requirement: CTE

Prerequisites: Successful Completion of Two Years of AFJROTC (One year with teacher permission).

This hands-on experience affords cadets the opportunity to put theories of previous leadership courses into practice. Planning, organizing, coordinating, directing, controlling, and decision-making will be done by cadets. Cadets apply what they learned in their leadership courses. They will put into practice their communication, decision-making, personal- interaction, managerial, and organizational skills. *This course may fulfill a Career & Technical Education (CTE) or an Elective credit.*

AFJROTC Milestones into Aviation History and Leadership 1&2 (AS100/LE100)

Full Year, Grades 9,10,11,12

Course Number: FLT111,112

Dual Credit: No

Graduation Requirement: CTE

Prerequisites: None

Study the history of aviation from the early days of flight to the present space programs. Learn about job opportunities in the aerospace industry. Build and fly a balsa wood airplane. Develop self-confidence, pride in yourself, your cadet uniform, school, and community. Leadership, community service, and management opportunities are available and stressed. Paired with LE100: Citizenship, Character, and Air Force Tradition. *This course may fulfill a Career & Technical Education (CTE) or an Elective credit.*

AFROTC Cultural Studies: An Introduction to Global Awareness 1&2 (AS200/LE300)

Full Year, Grades 10,11,12

Course: FLT213,214

Dual Credit: No

Graduation Requirement: CTE

Prerequisites: Successful Completion of Journey into Aviation History or Instructor's Permission.

This course introduces students to the world's cultures through the study of world affairs, regional studies, and cultural awareness. The course is specifically created for the US Army, Marine Corps, Navy, and Air Force Junior ROTC programs. It delves into history, geography, religions, languages, culture, political systems, economics, social issues, environmental concerns, and human rights. It looks at major events and significant figures that have shaped each region. Throughout the course, there are readings, video segments, hands-on activities, other optional activities, technology enrichment, and assessments to guide in the reinforcement of

the materials. Leadership and management will be emphasized through training that focuses on life skills and career opportunities. This course may fulfill a Career & Technical Education (CTE) or an Elective credit.

AFROTC Exploring Space, The High Frontier 1&2 (AS300/LE200)

Full Year, Grades 10,11,12

Course: FLT311,312

Dual Credit: No

Graduation Requirement: CTE

Prerequisites: Successful Completion of Journey into Aviation History or Instructor's Permission.

This course includes the latest information available in space science and space exploration. The course begins with the study of the space environment from the earliest days of interest in astronomy and early ideas of the heavens, through the Renaissance, and on into modern astronomy. It provides an in-depth study of the Earth, Sun, stars, Moon, and solar system, including the terrestrial and the outer planets. It discusses issues critical to travel in the upper atmosphere such as orbits and trajectories unmanned satellites, and space probes. It investigates the importance of entering space and discusses manned and unmanned space flights, focusing on concepts surrounding spaceflight, space vehicles, launch systems, and space missions. The section on manned spaceflight focuses on the Space Shuttle, space stations and beyond, covering milestones in the endeavor to land on the Moon and to safely orbit humans and crafts for temporary and prolonged periods. The course covers the human aspect of spaceflight, focusing on the human experience in space. It also examines the latest advances in space technology, including robotics in space, the Mars Rover, and commercial uses of space. Paired with LE200: Communication, Awareness, and Leadership. This course may fulfill a Career & Technical Education (CTE) or an Elective credit.

Art

Pottery

Semester, Grades 9,10,11,12

Course Number: FNA117

Graduation Requirement: CTE and Arts

Dual Credit: No

Prerequisites: None

This course teaches the fundamentals of Pottery. Students learn pottery and sculpture using hand building techniques. Some wheel throwing techniques are explored. Students learn finishing techniques in firing and glazing. Artistic style and ideas are developed while applying the elements of art and principles and design. Historical and contemporary pottery/ceramics are studied as students build their skills, understanding and practice their visual literacy. *This course may fulfill a Career & Technical Education (CTE), Art, or an Elective credit.*

Screen Printing Beginning

Semester, Grade 9,10,11,12

Course Number: FNA115

Dual Credit: No

Graduation Requirement: CTE and Arts

Prerequisites: none

This course will introduce the screen-printing trade that generally prepares students to apply technical knowledge and skills to plan, prepare, and execute a variety of commercial and industrial graphic communication jobs. A combination of technical laboratory applications and theory will provide the foundation for this course and you will produce a final project by designing and printing your own t-shirt. *This course may fulfill a Career & Technical Education (CTE), Art, or an Elective credit.*

Screen Printing Advanced

Semester Grades 9,10,11,12

Course Number: FNA125

Dual Credit: No

Graduation Requirement: CTE and Arts

Prerequisites: Screen Printing Beginning or teacher permission.

This course is designed to build on the basic concepts in screen-printing learned in the Beginning Screen Printing course. Advanced students will be running the Patriot Screen Print Shop with the goal to have a website, as well as control merchandise that is sold at the school store. *This course may fulfill a Career & Technical Education (CTE), Art, or an Elective credit.*

Visual Arts & Design

Semester, Grades 9,10,11,12

Course Number: FNA111

Graduation Requirement: Fine Arts

Prerequisites: None

Students in this course explore a variety of two-dimensional art media including a variety of types and styles of drawing and painting. Students may build on skills and concepts learned in middle school art classes or may be learning art skills and concepts for the first time. The focus of the course is on producing artwork with a range of media, techniques, and styles. The course also begins to explore art history, art criticism, and aesthetics. There is a focus on art skills that transfer to careers in the arts.

This course may fulfill a Fine Art, or an Elective credit.

AP Art Studio 1&2

Full Year, Grades 10,11,12

Course Number: FNA131,132

Dual credit CTE, Credit by Exam

Graduation Requirement: CTE and Arts

Prerequisites: Teacher permission required.

The Advanced Placement Studio Art course provides students with a learning experience equivalent to that of an introductory college course in studio art foundation. In this course students will focus on career exploration in the fields of Design and Professional Production Arts. This course focuses on the theories, methods and techniques and must include the areas of glass, metal, ceramic, wood, polymers, and mixed media. Includes instruction in core art EALRs, design, concepts sketching, technical drawing, and color theory. Students will create a portfolio of work in at least one of three areas of study: Drawing, 2-D Design, or 3-D design. This body of work can be used to meet college admission portfolio requirements and will be assessed by the College Board for Advanced Placement, in lieu of an examination. *Students who earn a grade 'C' (2.0) or better in this course can earn a college credit. This course may fulfill a Career & Technical Education (CTE), Art, or an Elective credit.*

Career and Technical Education- CTE

Biomedical

Biomedical Innovations 1&2

Full Year, Grades 11,12

Course Number: SCI415,416

Graduation Requirement: CTE and Science (Lab Science)

Prerequisites: Principles of Biomedical Science 1&2, Human Body Systems 1&2 and Medical Interventions 1&2 or teacher permission.

Biomedical Innovation is the final course of the PLTW Biomedical Science sequence, students build on the knowledge and skills gained from previous courses to design innovative solutions for the most pressing health challenges of the 21st century. Students address topics ranging from public health and biomedical engineering to clinical medicine and physiology. They have the opportunity to work on an independent design project with a mentor or advisor from a university, medical facility, or research institution.

This course may fulfill a Career & Technical Education (CTE), Science, or an Elective credit.

Principles of Biomedical Sciences 1&2

Full Year, Grades 9,10,11,12

Course Number: SCI115,116

Dual Credit-CTE

Graduation Requirement: CTE and Science (Lab Science) or Health & Fitness (Health)

Prerequisites: None

Students investigate the human body systems and various health conditions, including heart disease, diabetes, sickle cell disease, hypercholesterolemia, and infectious diseases. They determine the factors that led to the death of a fictional person and investigate lifestyle choices and medical treatments that might have prolonged the person's life. The activities and projects introduce students to human physiology, medicine, research processes, and bioinformatics. This course is designed to provide an overview of all the courses in the Biomedical Sciences program and lay the scientific foundation for subsequent courses. *Students who earn a grade of 'C' (2.0) or better in this course can earn college credit. This course may fulfill a Career & Technical Education (CTE), Science, or an Elective credit.*

Human Body Systems 1&2

Full Year, Grades 10,11,12

Course Number: SCI215,216

Dual Credit-CTE

Graduation Requirement: CTE and Science (Lab Science)

Prerequisites: Principles of Biomedical Sciences 1, 2 or teacher permission.

Students examine the interactions of body systems as they explore identity, communication, power, movement, protection, and homeostasis. Students design experiments, investigate the structures and functions of the human body, and use data acquisition software to monitor body functions such as muscle movement, reflex and voluntary action, and respiration. Exploring science in action, students build organs and tissues on a skeletal manikin, work through interesting real-world cases, and play the roles of biomedical professionals to solve medical mysteries. *Students who earn a grade of 'C' (2.0) or better in this course can earn college credit. This course may fulfill a Career & Technical Education (CTE), Science, or an Elective credit.*

Medical Interventions 1&2

Full Year, Grades 11,12

Course Number: SCI315,316

Dual Credit-CTE

Graduation Requirement: CTE and Science (Lab Science)

Prerequisites: Principles of Biomedical Sciences and Human Body Systems 1 & 2 or teacher permission.

Students investigate a variety of interventions involved in the prevention, diagnosis, and treatment of disease as they follow the life of a fictitious family. Students learn how to screen and fight infection; screen and evaluate the code in human DNA; prevent, diagnose, and treat cancer; and prevail when the organs of the body begin to fail. Through these scenarios, students are exposed to a range of interventions related to immunology, surgery, genetics, pharmacology, medical devices, and diagnostics. *Students who earn a grade of 'C' (2.0) or better in this course can earn college credit. This course may fulfill a Career & Technical Education (CTE), Science, or an Elective credit.*

Business

Business and Marketing is for EVERY student! The Business Department is designed to prepare graduates as viable competitors in the business world and for advanced educational opportunities. Business attitudes are essential in order to participate in the international marketplace as productive workers and consumers.

College credit may be earned through the WHS Business and Marketing classes from Bates Technical College, Clover Park Technical College, Pierce Community College, by successfully completing designated CTE Dual Credit classes with a 'C' (2.0) or better. See your business teacher for details.

Introduction to Computer Science 1&2

Full Year, Grades 9,10,11,12

Course Number: TEC113,114

Dual Credit-CTE

Graduation Requirement: CTE and Mathematics (3rd Year)

Prerequisites: None

Introduction to Computer Science will cover the foundations of computer science and basic programming, with an emphasis on helping students develop logical thinking and problem-solving skills. At a time when computer science affects how we work and live, Computer Science empowers students grades 9-12 to become creators, instead of merely consumers. Students who earn a grade of 'C' (2.0) or better in this course can earn college credit. *This course may fulfill a Career & Technical Education (CTE), Mathematics, or an Elective credit.*

AP Computer Science 1&2

Full Year, Grades 10,11,12

Course Number: TEC231,232

Dual Credit- CTE, Credit by Exam

Graduation Requirement: CTE and Mathematics (3rd Year)

Prerequisites: Introduction to Computer Science or teacher permission.

This course focuses on the general writing and implementation of generic and customized programs to drive operating systems and that generally prepares individuals to apply the methods and procedures of software design and programming to software installation and maintenance. Includes instruction in software design, low- and high-level languages and program writing; program customization and linking; prototype testing; troubleshooting; and related aspects of operating systems and networks. Students who earn a grade of 'C' (2.0) or better in this course can earn college credit. This course may fulfill a Career & Technical Education (CTE), Mathematics, or an Elective credit.

Business Management / Entrepreneurship 1 & 2

Full Year, Grade: 9,10,11,12

Course Number: BUS111,112

Dual Credit Graduation Requirement: CTE

Prerequisites: None

This course prepares individuals to develop and manage independent small businesses. Includes instruction in business administration; enterprise planning and entrepreneurship; start-up; small business operations and problems; personnel supervision; capitalization and investment; taxation; business law and regulations; e-commerce; home business operations; and applications to specific sectors, products, and services. Students who earn a grade of 'C' (2.0) or better in this course can earn college credit. This course may fulfill a Career & Technical Education (CTE) or an Elective credit.

Financial Literacy

Semester, Grades 9,10,11,12

Course Number: BUS211

Dual Credit -CTE

Graduation Requirement: CTE and Mathematics (3rd Year)

Prerequisites: none

Are you constantly running out of money and finding it difficult to pay for the movies? This course will teach you financial management skills that will help you make smart financial decisions, now and in the future. Topics include banking services, consumer credit, budgeting, saving, investing, stocks, insurance, retirement planning, how to buy a car and more. You will learn how to avoid financial mistakes by understanding your options and responsibilities. This class will help you to be financially successful in the real world. Students who earn a grade

of 'C' (2.0) or better in this course can earn college credit. *This course may fulfill a Career & Technical Education (CTE), Mathematics, or an Elective credit.*

Graphic Design

Semester, Grades 9,10,11,12

Course Number: ATC321

Dual Credit-CTE

Grad Requirement: CTE and Arts

Prerequisites: None

Unleash your creativity in this dual credit course that will develop your digital artwork skills. Using Adobe Photoshop, Illustrator and InDesign students will create works of art that are meaningful and personal. Learn the principles of design and art elements while gaining skills that make you employable. Students are exposed to the entire creative process from concept sketches to layout requirements for printing. Students who earn a grade of 'C' (2.0) or better in this course can earn college credit. *This course may fulfill a Career & Technical Education (CTE), Art, or an Elective credit.*

Engineering

Introduction to Engineering & Design 1&2

Full year, Grades 9,10,11,12

Course Number: TEC111,112

Dual Credit-CTE

Graduation- CTE and Mathematics (3rd year)

Prerequisites: None

Students will explore the engineering design process, applying math, science, and engineering standards to hands-on projects. Students will work both individually and in teams to design solutions to a variety of problems using 3-D modeling software, and apply their skills utilizing 3-D printers and laser engravers. Students who earn a grade of 'C' (2.0) or better in this course can earn college credit. This course may fulfill a Career & Technical Education (CTE), Mathematics, or an Elective credit.

Aerospace Manufacturing 1&2

Full year, Grades 10,11,12

Course Number: TEC213,214

Dual Credit-CTE

Graduation- CTE and Mathematics (3rd year)

Prerequisites: none

This course is a hands-on course that will provide an overview of mechanical behavior and characteristics of aerospace materials including metal alloys, polymers, ceramics and composites. Students will receive hands-on experience in machining, testing and assessing the properties and performance of aerospace materials. Students will apply the skills learned by designing and making various projects. Seniors who complete this course and earn an industry recognized certificate will have an opportunity to interview with local companies. Students who earn a grade of 'C' (2.0) or better in this course can earn college credit. *This course may fulfill a Career & Technical Education (CTE), Mathematics, or an Elective credit.*

Aerospace Manufacturing Advanced 3&4

Full Year, Grades 11,12

Course Number: TEC313,314

Dual Credit-CTE

Graduation Requirement: CTE and Mathematics (3rd Year)

Prerequisites: Aerospace Manufacturing 1&2

This course that prepares students to apply basic engineering principles and technical skills in support of engineers and other professionals engaged in developing, manufacturing and testing aircraft, spacecraft and their systems. Includes instruction in aircraft/spacecraft systems technology; design and development

testing, prototype and operational testing; inspection and maintenance procedures, instrument calibration, test equipment operation; maintenance and report preparation. Students who earn a grade of 'C' (2.0) or better in this course can earn college credit. *This course may fulfill a Career & Technical Education (CTE), Mathematics, or an Elective credit.*

Robotics Technology

Semester, Grades 9,10,11,12

Course Number: TEC115

Graduation Requirement: CTE

Prerequisites: None

Robotics Technology uses Spheros, LEGO EV3s, and Drone Technology to learn concepts of logic, design and computational thinking. Students will be exposed to various robotics engineering including mechanical, software, electrical, computer science, and system design engineering. Students will have the opportunity to apply principles learned and build robots for competition and industrial application. In addition, students will have the opportunity to compete in an international FIRST Tech Challenge. *This course may fulfill a Career & Technical Education (CTE) or an Elective credit.*

Media

Digital Photography Beginning

Semester, Grades 9,10,11,12

Course Number: ATC301

Dual Credit-CTE

Graduation Requirement: CTE and Arts

Prerequisites: None

This course will focus on career exploration in the fields of photography. The course will include basic theories, methods and techniques used to plan, produce, and distribute photos, Includes instruction in lighting, camera options, composition, production preparation, and related computer applications. Students who earn a grade of 'C' (2.0) or better in this course can earn college credit. *This course may fulfill a Career & Technical Education (CTE), Art, or an Elective credit.*

Digital Photography Advanced

Semester, Grades 9,10,11,12

Course Number: ATC302

Dual Credit-No

Graduation Requirement: CTE and Arts

Prerequisites: Digital Photography Beginning

This course prepares students to use computer applications and related visual imaging and editing techniques to manipulate images and information originating as digital, still photographs, digital copy, and physical objects in order to communicate messages simulating real-world content. Includes instruction in specialized camerawork and equipment operation and maintenance, image capture, lighting, software applications, and applications to specific commercial, industrial, and entertainment needs. *This course may fulfill a Career & Technical Education (CTE), Art, or an Elective credit.*

TV Production 1&2

Full Year, Grades 9,10,11,12

Course Number: ATC201,202

Dual Credit: No

Graduation Requirement: CTE and Arts

Prerequisites: None

This course prepares students to apply technical knowledge and skills to the production of television related video programming and related operations, under the supervision of studio managers, directors, editors, and producers. Includes instruction in sound, lighting, camera options and maintenance; power and feed control; studio operations; production preparation; basic broadcast engineering; related computer applications; and

specialized applications such as news, entertainment, live talk, sports, commercial and corporate production. *This course may fulfill a Career & Technical Education (CTE), Art, or an Elective credit.*

Video Editing 1&2

Full Year, Grades 10,11,12

Course Number: ATC211,212

Dual Credit-CTE

Graduation Requirement: CTE and Arts

Prerequisites: None

This is a performance-based class for those interested in the television, film, or video production industries. Coursework includes practical experience shooting and editing videos. You will produce a final project for the film festival. Students who earn a grade of 'C' (2.0) or better in this course can earn college credit. *This course may fulfill a Career & Technical Education (CTE), Art, or an Elective credit.*

Yearbook 1&2

Full year, Grades 10,11,12

Course Number: ATC401,402

Dual Credit -CTE

Graduation Requirement: CTE and Arts

Prerequisites: Digital Photography, Graphic Design or teacher permission.

In this course you will have the opportunity to develop a creative theme and design the schools' yearbook. Students will apply technical knowledge and skills to the layout, design and publication. All phases of publication including copy writing, layout, and photography are covered by applying sophisticated computer technology to contemporary design. Students will be required to work outside of class time to meet publishing deadlines. Students who earn a grade of 'C' (2.0) or better in this course can earn college credit. *This course may fulfill a Career & Technical Education (CTE), Art, or an Elective credit.*

Trades

Construction Trades (Pre-Apprenticeship) 1&2

Full Year, Grades 10,11,12

Course Number: ARC111,112

Dual Credit- CTE

Graduation Requirement: CTE and Mathematics (3rd Year)

Prerequisites: Physically fit to lift and carry heavy objects.

Construction Trades Pre-Apprenticeship may be your ticket to a high demand, high wage career in construction. As a Recognized Pre-Apprenticeship program of the Pierce County Building Trades, you will have direct and preferred entry into apprenticeships following successful completion of the program. Students will have the opportunity to earn Industry Recognized Certificates. The culminating project will be building a tiny house/structure where you will apply skills learned from all units. Students who earn a grade of 'C' (2.0) or better in this course can earn college credit. *This course may fulfill a Career & Technical Education (CTE), Mathematics, or an Elective credit.*

Family & Consumer Sciences

Culinary Arts Beginning

Semester, Grades 9,10,11,12

Course Number: FCS111

Dual Credit- CTE

Prerequisites: None

During this class students will make a study of safety and sanitation, basic culinary skills and knowledge, baked goods, and the food guide pyramid. Students will demonstrate their knowledge through individual and group activities. Students who earn a grade of 'C' (2.0) or better in this course can earn college credit. *This course may fulfill a Career & Technical Education (CTE) or an Elective credit.*

Culinary Arts Advanced

Semester, Grades 10,11,12

Course Number: FCS113

Dual Credit-CTE

Graduation Requirement: CTE

Prerequisites: Culinary Arts Beginning and teacher permission.

Students will be trained for career opportunities in the food service/culinary arts industry. Students will have the opportunity to learn and practice safety and sanitation procedures, basic communication skills and customer relations, meal planning, and more advanced food preparation skills. Students who earn a grade of 'C' (2.0) or better in this course can earn college credit. *This course may fulfill a Career & Technical Education (CTE) or an Elective credit.*

Early Childhood Education

Semester, Grades 10,11,12

Course Number: FCS211

Dual Credit-CTE

Prerequisites: None

In Early Childhood Education students learn knowledge, skills, and practices required for careers in Early Childhood, Education and Services. The course focuses on the provision and management of childcare services and prepares individuals to plan, design, and manage childcare facilities and programs that meet children's developmental needs and interests and that provide safe and healthy environments. Students who earn a grade of 'C' (2.0) or better in this course can earn college credit. *This course may fulfill a Career & Technical Education (CTE) or an Elective credit.*

Independent Living

Semester, Grades 10,11,12

Course Number: FCS311

Dual Credit: No

Graduation Requirement: CTE

Prerequisites: None

Independent Living is designed to prepare students for responsible decision making in a variety of areas that confront young adults as they leave high school. The primary focus of Independent Living is the development of essential skills for living on their own, in a family, or with others. Standards and competencies are selected from the National Standards for Family and Consumer Sciences Education. Planning systems to manage connections between human economic and environmental resources examining family responsibilities, career choices, and community involvement is an essential component of this course. *This course may fulfill a Career & Technical Education (CTE) or an Elective credit.*

Teaching Academy 1&2

Full Year, Grades 10,11,12

Course Number: CIE311,312

Dual Credit-CTE

Graduation Requirement: CTE

Prerequisites: Recommended Courses - Early Childhood Education

In this course students learn the knowledge, skills, and practices required for careers in education. The course focuses on the general theory and practice of learning and teaching; the basic principles of educational psychology; the art of teaching; the planning and administration of educational activities; and the social foundations of education. In addition, standards and competencies from the Early Childhood, Education and Services and the Family and Community Services sections of the Family and Consumer Sciences National Standards are attained by students, preparing them for the beginning levels of a variety of human service

careers. Students who earn a grade of 'C' (2.0) or better in this course can earn college credit. *This course may fulfill a Career & Technical Education (CTE) or an Elective credit.*

Health & Physical Education

Freshmen are required to take two one-semester PE classes. Freshmen are required to take a one-semester Health class and a one-semester Advanced Physical Education class. Athletic T-Shirt, athletic style shorts, socks and rubber soled athletic shoes are required. No black soled shoes are allowed in class. Sweats or warm-ups are highly recommended for winter months and outdoor cardio days.

Family Health

Semester, Grades 9,10,11,12

Course Number: HPE111

Dual Credit: No

Prerequisites: None

Graduation Requirement: Health

Family Health is designed to prepare students for life-long decision making, problem solving, critical thinking, and management skills related to health and wellness issues impacting families. The primary role is enabling students to assume an active role in developing healthy lifestyles for themselves and others. Integrating the Washington Health and Fitness essential learning's with standards and competencies from the National Standards for Family and Consumer Sciences Education, this course focuses on the interrelationships of healthy choices and a productive, satisfying life.

Individual and Team Sports

Semester, Grades 9,10,11,12

Course Number: HPE124

Prerequisites: Intro to PE

This class will be tailored to ability levels of the students in class. Emphasis will either be competitive or recreational and will involve a variety of individual and team sports designed to increase the skill levels of each student and provide active participation for each student. Sports activities include basketball, volleyball, team handball, soccer, ultimate Frisbee, badminton, flag football, and pickle ball. Grading will be based on active involvement, participation level, written tests and completed coursework. The class involves a strong emphasis on personal fitness through active participation, including: general fitness testing, aerobic exercise, and different fitness concepts and sport training principles. Athletic clothing and athletic shoes are required of all students. *Regular attendance and participation in all activities is mandatory for satisfactory completion of this course as per student handbook*

Intro to P.E.

Semester, Grade 9-10

Course Number: HPE112

Prerequisites: None

Required Course

This is the first Physical Education course to be taken at WHS and must be satisfactorily completed before enrolling in any other Physical Education courses. It will cover a wide range of beginning weight training, circuit training, cardio, team & individual sports and other activities to set students up for success in life long fitness activities after high school.

Advanced P.E.

Semester, Grade 10,11,12

Course Number: HPE122

Prerequisites: Intro to P.E.

Required Course

This class will be tailored to ability levels of the students in class. Students must pass Intro to PE (PE 1) in order to sign up for this class. It will cover a wide range of advanced weight training, circuit training, cardio, team & individual sports and other activities to set students up for success in life long fitness activities after high school. There will be a strong emphasis on personal fitness though active participation including: general fitness testing, aerobic exercise, cardiorespiratory endurance, weight room etiquette and training, and different fitness concepts and sport training principles.

Unified PE

Semester, Grades 9,10,11,12

Course Number: HPE100

Prerequisites: Teacher approval

A Physical Education class that has student leaders/mentors pairing with students in the Special Education program. Student leaders will be required to help students with a disability engage and access activities, in team/individual sports, cardiorespiratory endurance and other physical education activities. Must have teacher approval before being added to the class.

Job Experiences

Counseling and Career Center Assistant

Semester, Grades 11,12

Course Number: CIE103,104

Prerequisites: Counselor Permission.

This class provides students with experience working with counselors, teachers, secretaries, public and WHS students. Counseling and Career Center Assistants will be trained as office professionals emphasizing good public relations, filing and other general office procedures. Counseling and Career Center Assistants will be expected to demonstrate good citizenship, respect for others and maintain confidentiality. Regular attendance is required.

Main Office Assistant

Semester, Grades 11, 12

Course Number: CIE101,102

Prerequisites: Administrator Permission.

This class provides students with experience working with administrators, counselors, teachers, secretaries as well as the public. Students will be trained as office professionals emphasizing good public relations, filing and other general office procedures. Main office assistants will be expected to demonstrate good citizenship, respect for others and maintain confidentiality. Regular attendance is required.

Teacher Assistant

Semester, Grades 11,12

Course Number: CIE107,108

Prerequisites: Teacher Assistant Permission Form must be approved.

Student can earn elective credit (for a maximum of 2 semesters) in their high school career. Student will receive a letter grade for the 1st time he/she is a T.A; and pass/fail grade for the 2nd time and can T.A. only once per semester. The T.A. requirements are to be a role model for other students, stay in the classroom or the designated T.A. area unless given a specific errand. Follow the teacher's course guide requirements.

Language Arts

Each student will be required to take a full year of Freshman, Sophomore, Junior and Senior English.
The Following Courses Are Also Available with Instructor Permission.

ELL Level 1- 1&2

Full year, Grades 9,10,11,12

Course Number: ENG521,522

Prerequisites: Teacher Permission and Active Placement in ELL Program

This course is designed for the new English language learner and continuing support for learners of English. This course includes vocabulary building, basic reading skills, writing skills, phonemic awareness, speech skills, and an introduction to the U.S. school system and culture. This course will also prepare students for life after graduation including post-secondary planning, PATS portfolio support, and develop an understanding of the US system for the purpose of independent living.

ELL Level 2-1&2

Full year, Grades 9,10

Course Number: ENG523,524

Prerequisites: Teacher Permission and Active Placement in the ELL program

This course is designed for the newcomer and advanced beginner learner of English. It includes more intensive instruction in reading and writing as well as more basic grammar instruction.

ELL Level 3-1&2

Full Year, Grades 11,12

Course Number: ENG 525,526

Prerequisites: Teacher permission and Active Placement in ELL Program

This course is designed for the newcomer and advanced beginner learner of English. It includes more intensive instruction in reading and writing as well as more basic grammar instruction.

Language Arts 1&2

Full year, Grades 9,10,11,12

Course Number: Grade 9=ENG101,102

Grade 10=ENG 201,202

Grade 11=ENG 301,302

Grade 12=ENG 401,402

Prerequisites: IEP Determined

This course emphasizes intense writing and reading instruction. The Jane Schaeffer writing technique, Language! Curriculum and/or reasoning and writing curriculum will be used to strengthen literacy skills. A high level of direct instruction and student participation is utilized in all Language Arts courses.

Reading Lab (Read to Achieve) 1&2

Full Year, Grades 9,10,11,12

Course Number: ENG501,502

Prerequisites: IEP Determined

The program is based on a proven approach to improving comprehension. Read to Achieve provides two courses to boost achievement with explicit reading for understanding instruction:

1. With Comprehending Content-Area Text, students effectively read science and social studies texts, take notes from textbooks and classroom lectures and learn real world study skills and work strategies
2. With Comprehending Narrative Text students effectively read conceptually challenging text, capture main idea, key concepts, and details and engage in high quality open discussions of content.

Freshman English**Freshman English 1&2**

Full year, Grade 9

Course Number: ENG111,112

Prerequisites: None

This class will enable students to refine their writing, speaking, listening, and reading skills. They will become familiar with common literary terms, figurative language, multiple modes of writing, and general vocabulary.

Students will focus on poetry, narrative writing, short answer & extended responses, and argumentative writing as they become active participants in developing and organizing their ideas. Speaking and listening skills are also critical components of this course. In addition, students will be taught to utilize higher level thinking skills through various assignments and projects.

Freshman English (Advanced) 1&2

Full year, Grade 9

Course Number: ENG121,122

Prerequisites: None

Speaking and Listening skill development is a critical component of this course. This class will enable students to refine their writing and reading skills. They will become familiar with common literary, argumentative and analytical terms and apply their learning to various forms of media and literature. Students will learn to become active readers and learners by learning and applying various strategies such as close reading and note taking. Students will also be taught to become active participants in their writing with a focus on the expository and argumentative writing modes. In addition, students will be taught to utilize higher level thinking skills through various assignments, projects and class discussions. A main goal of Advanced Freshman English is to prepare students for Advanced Placement classes they will take during their 11th and 12th grade years. Advanced English will require more detailed and extensive writing as well as more rigorous reading assignments than the regular 9th program. Reading and completion of assignments outside of class time will be required.

Sophomore English

Sophomore English 1&2

Full Year, Grade 10

Course Number: ENG211,212

Prerequisites: None

Speaking and Listening skill development is a critical component of this course. This class will enable students to refine their writing and reading skills. Students will be given frequent writing tasks in an effort to reinforce and improve students' writing skills. Students are active participants in their writing. A variety of reading strategies will be used to expand comprehension of literary and informational text. This class will continue to prepare students to meet standards on the state content test.

Sophomore English (Advanced) 1&2

Full year, Grade 10

Course Number: ENG221,222

Prerequisites: None

Speaking and Listening skill development is a critical component of this course. Advanced Sophomore English is a course designed for the highly capable English student who is independent and who enjoys writing, reading, and thinking. Students will read literature from different genres. Assignments will require students to use their higher-level thinking skills, and to write and read critically and analytically. Students will be encouraged to develop their own writing styles. A main goal of Advanced Sophomore English is to prepare students for Advanced Placement classes they will take during their 11th and 12th grade years. Advanced English will require more detailed and extensive writing as well as more rigorous reading assignments than the regular 10 program. Reading and completion of assignments outside of class time will be required.

Junior English

Junior Bridge Prep 1&2

Full year, Grade 11

Course Number: ENG323,324

The Bridge to College English Prep language arts course is primarily for juniors who have not yet met standard on the Smarter Balanced assessment. The course curriculum emphasizes reading, writing, speaking & listening, and research based on the Common Core State Standards (CCSS) for ELA. Students will engage with rigorous texts and activities that support the standards' additional goals of developing the capacities of literacy, including deepening

appreciation of other cultures, valuing evidence and responding to varying tasks across content areas, and navigating technology to support their work.

AP English Language & Composition 1&2

Full year, Grade 11

Course Number: ENG331,332

Prerequisites: None

Speaking and Listening skill development is a critical component of this course. The primary goal of the course is to develop an awareness of language and to sharpen skills in essay development, language analysis, and critical reading. A secondary goal of this course is to prepare students to be successful in college English courses. Students are encouraged to develop individual styles adaptable to different audiences. The course will include an in-depth study of style and focus on the analysis of prose; it will also require independent reading and analysis of texts outside of class time. Throughout the year, students will be introduced to the semantic, structural, and rhetorical resources of the language. The AP test given in May is required of all students enrolled in this class. College credit may be received from taking the AP test.

Senior English

Bridge to College English 1&2

Full year, Grade 12

Course Number: ENG423,424

Prerequisites: none

The Bridge to College English language arts course is for seniors and is designed to prepare students to be college and career ready. The course curriculum emphasizes reading, writing, speaking & listening, and research based on the Common Core State Standards (CCSS) for ELA. Students will engage with rigorous texts and activities that support the standards' additional goals of developing the capacities of literacy, including deepening appreciation of other cultures, valuing evidence and responding to varying tasks across content areas, and navigating technology to support their work.

AP English Literature & Composition 1&2

Full year, Grade 12

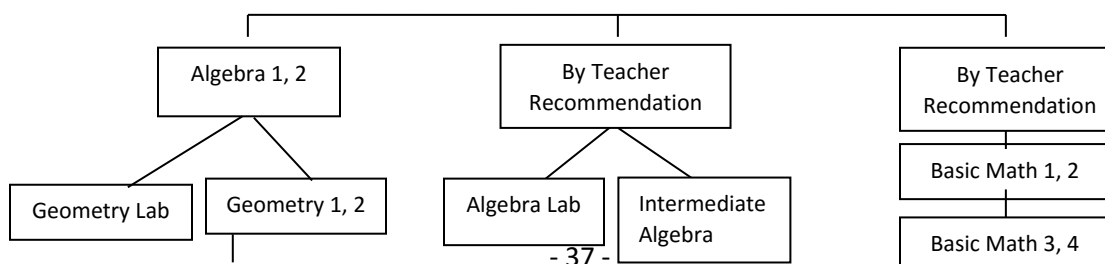
Course Number: ENG431,432

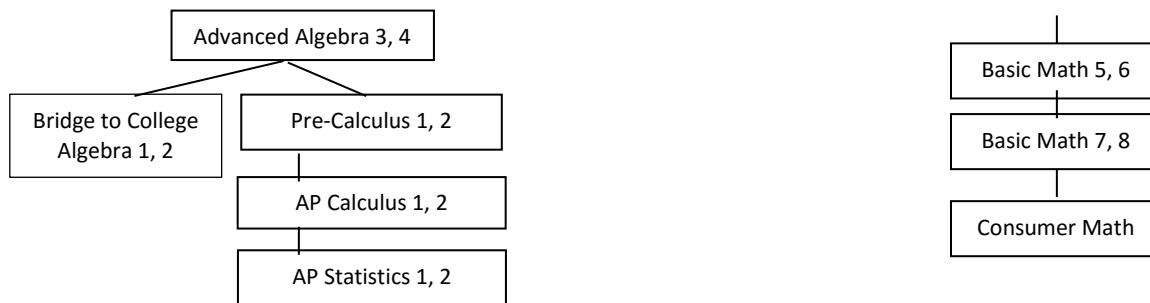
Prerequisites: None

Speaking and Listening skill development is a critical component of this course. In Advanced Placement English students are engaged in the careful reading of literary works. Through this study, they will sharpen their awareness of language and their understanding of the writer's craft. They will also develop critical standards for the independent appreciation of any literary work and they will increase their sensitivity to literature. To achieve this, students will study individual works, the language, characters, action and theme of the works. Students will consider structure, meaning, and value as related to contemporary mores of critical analysis. Students must enjoy reading novels, plays, poetry, essays and short stories. There will be independent reading assignments and regular homework that will have to be completed outside of class time. Students are required to take the AP test given in May. College credit may be received from taking the AP test.

Mathematics

MATH SEQUENCE





Pre-Algebra 1&2&3&4

Full year, Grades 10,11,12 (9th with recommendation only)

Course Number: MTH301-302, 401-402

Prerequisites: IEP determined

Essentials for Algebra integrates basic skills with pre-algebra and algebra lessons. This program expands the students' basic skills knowledge to becoming firm in the areas of solving a variety of equations using Algebra, using a coordinate system, probability and Geometry skills. Students learn to apply these skills through activities, projects and in the math curriculum. A high level of direct instruction and student participation is utilized in all Basic Math courses.

Algebra 1&2

Full year, Grades 9,10,11,12

Course Number: MTH111,112

Prerequisites: A grade of "C" or better in Mathematics 3 or Essentials for Algebra

Algebra will continue to develop both number sense and algebraic reasoning. Students will work with concepts algebraically, numerically, graphically, and verbally. Expressions and equations begin the course with a large in-depth study of linear functions carrying the majority of the coursework. Non-linear functions are also explored in the latter half of the class.

A student who fails a semester will be transferred out of the class by recommendation of the department and asked to repeat the coursework.

Advanced Algebra 1&2

Full year, Grades 9,10,11,12

Course Number: MTH321,322

Prerequisites: A "C" grade or better in Algebra 1, 2, Geometry 1, 2 or permission of the math department

Advanced Algebra continues the foundation laid by Algebra 1, 2. Students will begin with complex solving and linear functions. However, the large portion of study will be with non-linear functions and their unique properties. To finish the coursework, students will have an introduction to trigonometric functions. This course satisfies a "third credit" of math.

A student who fails a semester may be transferred out of the class by recommendation of the department and asked to repeat the coursework.

Basic Math 1&2&3&4

Full year, Grades 9,10,11,12

Course Number: MTH101-102, 201-202

Prerequisites: IEP determined

This course emphasizes intense mathematics instruction. The curriculum that is used focuses on whole number operations, fractions, decimals, and percentages as well as problem solving strategies that teach students how to apply the above skills. A high level of direct instruction and student participation is utilized in all Basic Math courses.

Bridge to College Math 1&2

Full year, Grade 12

Course Number: MTH 423,424

Prerequisites: Passing grade in Algebra 3 & 4, has not taken Pre-Calculus

This class is designed for senior students who have successfully completed Advanced Algebra and who are seeking to earn their fourth math credit. The class focuses on the algebraic skills that will be most useful to students in college and will assist in entrance into a college level math course instead of remediation.

Consumer Math 1&2

Full year, Grade 11,12

Course Number: MTH601,602

Prerequisites: Teacher Recommendation

This is a full year course designed to reinforce arithmetic skills for seniors through the study of consumer education topics. The course is intended to help students to develop in to active, knowledgeable and thoughtful consumers and to prepare them to engage in adult consumer activities with some skill and savvy, while understanding some of the mathematics that underlie their choices. Skills in the areas of whole numbers, fractions, decimals, percent and algebra are reviewed and taught as needed to deal with the consumer applications.

Geometry 1&2

Full year, Grades 9,10,11,12

Course Number: MTH211, 212

Prerequisites: A grade of "C" or better in Algebra 1, 2

Geometry is a course that studies the in-depth properties of 2- and 3-dimensional figures. Students will learn about the relationships of points, lines, planes, triangles, quadrilaterals, and polygons using the interactions of unique, proven properties. Three dimensional shapes and trigonometry are also largely supported in this class. Logical thinking and proof, a form of reasoning that will help them to explain sequentially with valid rationales, are formally developed throughout the content.

A student who fails a semester will be transferred out of the class by recommendation of the department and asked to repeat the coursework.

Intermediate Algebra 1&2

Full year, Grades 11,12

Course Number: MTH313,314

Prerequisites: Teacher Recommendation

This course uses Washington State created tasks to assist students who have not passed the Math EOC. Coursework is scaffold within each topic of study preparing students for the variety and rigor in the state Mathematics assessment. Students will complete and submit a Collection of Evidence, an alternative approach to meeting the state requirements

Pre-Calculus 1&2

Full year, Grades 10,11,12

Course Number: MTH411,412

Prerequisites: Successful completion of Algebra 3/Trig and Geometry 1,2

This course will include a more detailed approach to the concepts of functions and an introduction to calculus. Five main functions – linear, quadratic, power, exponential and trigonometric functions are further extended algebraically, numerically, verbally, and graphically. This class is highly recommended for any student planning a career in science, engineering or mathematics. Students will need a graphing calculator (TI-84 Plus) for this course.

Advanced Placement

AP Calculus 1&2

Full year, Grades 11,12

Course Number: MTH631,632

Prerequisites: A grade of C or better in Pre-Calculus 1 and 2

AP Calculus is equivalent to the first year of college calculus. Students will study differential and integral calculus along with elementary functions. This course will mathematically challenge students while allowing them the opportunity to earn college credit. It is highly recommended for any student planning a career in science, engineering or mathematics. This class is a full year commitment, and students are required to take the AP exam in May. Students will need a graphing calculator (T1-84 Plus) for this course.

AP Statistics 1&2

Full year, Grade 12

Course Number: MTH635,636

Prerequisites: A grade of "C" or better in Algebra 3/Trigonometry and in Pre-Calculus 1 and 2

Statistics acquaints students with the major concepts and tools for collecting, analyzing, and drawing conclusions from data. Students will frequently work on projects involving the hands-on gathering and analysis of real-world data. Ideas and computations presented in this course have immediate links and connections with actual events. This class is a full year commitment, and students are required to take the AP exam in May. Four broad conceptual themes include:

- * Exploring Data: Observing patterns and departures from patterns.
- * Planning a Study: Deciding what and how to measure.
- * Anticipating Patterns: Producing models using probability and simulation.
- * Statistical Inference: Confirming models.

Students will need a graphing calculator (T1-84 Plus) for this course.

Music

Choir

Intermediate Choir 1&2

Full year, Grades 9,10,11,12

Course Number: FNA313,314

Prerequisites: Previous Middle School, High School, or community choral experience only.

Performance based course for vocalists. Members of the group are expected to attend after school/evening commitments (rehearsals/concerts) throughout the year. Students will learn the intermediate and advanced vocal techniques involved in the performance of various styles of music. Students should be comfortable singing a solo melodic line alone and with others.

Required equipment (student's responsibility): Uniform (determined and purchased by students each year)

Advanced Choir 1&2

Full year, Grades 10,11,12

Course Number: FNA315,316

Prerequisites: Intermediate Choir and Instructor's permission.

Performance based course for vocalists. Members of the group are expected to attend after school/evening commitments (rehearsals/concerts) throughout the year. Students will learn the intermediate and advanced vocal techniques and choreography involved in the performance of various styles of music. Students should be more comfortable singing a solo melodic line alone and with others and harmonize with ensemble members. and be capable of light/moderate physical activity while singing. Students may also take on a leadership role as section leader or assistant director.

Required equipment (student's responsibility): Uniform (determined and purchased by students each year)

Band

Instrumental Jazz Ensemble 1&2

Full year, Grades 9,10,11,12

Course Number: FNA419,420

Prerequisites: Full group audition in September for first two weeks of school, concurrent enrollment in Wind or Percussion Ensemble.

This performance-based course is designed to develop an understanding of the components necessary to perform music in the Jazz style. The focus is on Jazz articulation, improvisation, Jazz styles, and Jazz theory. Students must audition for the course and there are a limited number of open spots. All students will receive a letter grade, course credit, and daily attendance is required. Students will be responsible for a variety of costs including uniform costs (i.e. concert black, dress shoes) and equipment costs (i.e. reeds, sticks, mutes). School instruments are available at no charge.

Percussion Ensemble 1&2

Full year, Grades 9,10,11,12

Course Number: FNA427, 428

Course Number: FNA 417, 418 (Beginning)

Course Number: FNA 437, 438 (Advanced)

Prerequisites: Open to all students by audition/instructor approval. Audition materials are available from the director.

Performance based course is for Percussion students only. Members of this group are considered members of the Wind Ensemble, Pep Band, Marching Band, and Drum Line- and will be expected to attend summer band camp as well as after school/evening performances (Concerts, Football/Basketball Games, and Parades) throughout the year. Students will learn intermediate and advanced techniques on all percussion instruments. Required equipment (student's responsibility): Drum Sticks, Mallets, Stick Bag, Uniform (concert black, band shoes).

Steel Drum Ensemble (Beginning) 1&2

Full year, Grades 9,10,11,12

Course Number: FNA611,612

Prerequisites: No previous music experience required, but preferred – willingness and eagerness to learn also a definite plus

This performance-based course is designed to teach the basics of steel drums including: reading music (notes and rhythms), sticking, concert preparation and performances. Members will be required to attend all performances of the ensemble (i.e. concerts, community events, assemblies), most of which take place in the evening. Students will be given plenty of advance notice regarding performances. Students will be graded individually.

Steel Drum Ensemble (Advanced) 1&2

Semester, Grades 9,10,11,12

Course Number: FNA621, 622

Prerequisites: One year of steel drums and/or audition with the instructor.

This performance-based course is designed to continue teaching the basics of steel drums including: reading music (notes and rhythms), sticking, concert preparation and performances with additional focus on music theory, soloing, and composition. Members will be required to attend all performances of the ensemble (i.e. concerts, community events, assemblies), most of which take place in the evening. Students will be given plenty of advance notice regarding performances. Students will be graded individually.

Wind Ensemble 1&2

Full year; Grades 9,10,11,12

Course Number: FNA415,416

Prerequisites: Open to all students by audition/instructor approval. Audition materials are available from the director.

This performance based course for Brass/Woodwind students only. The course teaches advanced instrumental technique on woodwind and brass instruments. Members of this group are also considered members of the Prep Marching Band and will be expected to attend summer band camp as well as after school/evening

commitments (rehearsals, concerts, football and basketball games, parades) throughout the year. Required equipment: (student's responsibility): Instrument, Reeds/supplies, uniform (concert black, band shoes).

Music- Other

The History of Rock and Roll

Semester, Grades 9,10,11,12

Course Number: FNA571

The History of Rock and Roll is focused on how music has affected culture and society throughout history. Students will learn about all major areas of modern Rock and Roll music from the 1940's to the present. Students will also relate their own musical experiences to music history and learn how they are personally affected by music. No prior musical experience is required to succeed in this class. Students will develop an appreciation for various styles of music through a rigorous listening regimen.

Beginning Piano/Keyboarding

Semester, Grades 9,10,11,12

Course Number: FNA601

Keyboard Class focuses on learning how to play notes, rhythms and chords using modern styles such as pop and rock music. Students will learn how to use an electric keyboard as the basis for a modern music ensemble. Performances will be considered for assemblies, concerts, or community events. Students will gain an understanding of how electric keyboards function in today's musical styles. No prior musical experience is required to succeed in this class.

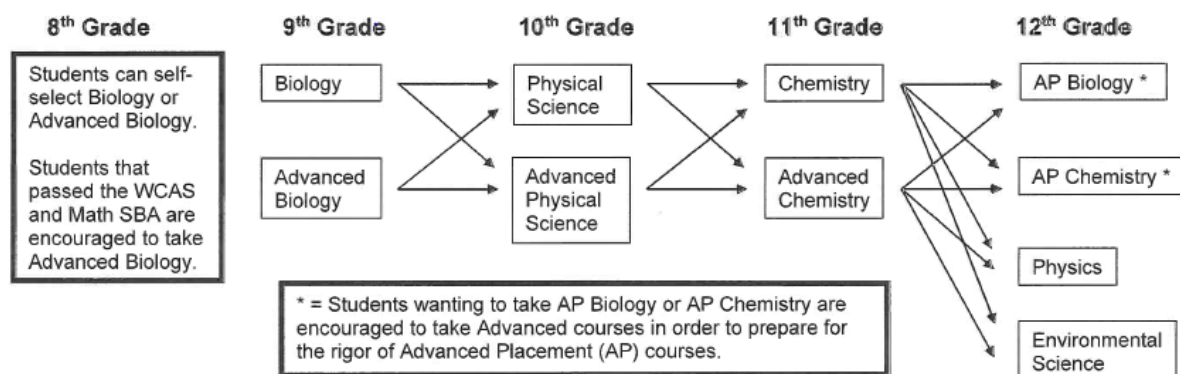
Ukulele

Semester, Grades 9,10,11,12

Course Number: FNA617,618

This course will include introductory through intermediate ukulele playing techniques. Beginners are welcome and will be matched with more experienced players as peer tutors. Students will study open chords, barre chords, finger-picking and common strum patterns, reading chords, and tablature. Playing tests are a part of our course curriculum and solo opportunities will be offered to students interested in performing individually. Performances will be considered for assemblies, concerts and community events. All materials and instruments will be provided.

Science



A = Passed 8th Grade WCAS and 8th Grade Math SBA
B = Teacher Recommendation
= Received B or better in both semesters of preceding course

NOTE: It is highly recommended that Advanced Physical Science students are concurrently enrolled in Principles of Biomedical Science (PBS) in order to gain background knowledge for AP Biology. Upon completion of PBS, students will also receive Health and CTE credits.

Biology 1&2

Full year, Grades 9

Course Number: SCI111,112

We will cover all the Life Science Core ideas of the Next Generation Science Standards (NGSS), which are used to develop the Washington Comprehensive Assessment of Science (WCAS).

Advanced Biology

Full Year, Grade 9

Course Number: SCI121,122

We will cover all the Life Science Core Ideas of the Next Generation Science Standards (NGSS), which are used to develop the Washington Comprehensive Assessment of Science (WCAS). This course will prepare students for taking AP BIOLOGY during their junior or senior year.

Chemistry 1&2

Full year, Grades 11,12

Course Number: SCI311,312

Prerequisites: Passed Biology and Physical Science

This course is a study of matter and energy in the universe. There is much more to chemistry than mixing chemicals and burning things. It is a challenging course due to the scale of atoms and molecules and trying to understand the tiny particles that make the universe. We will also be applying measurements and math to help us represent atoms, molecules, and chemical reactions. This course will cover physical science Next Generation Science Standards.

Chemistry (Advanced) 1&2

Full Year, Grade 11

Course Number: SCI321,322

Dual Credit: No

Graduation Requirement: Science (*Lab Science*)

Prerequisites: Received a 'B' or better in Biology or Physical Science, or by student request.

This course is a study of matter and energy in the universe. It is a challenging course due to the scale of atoms and molecules and trying to understand the tiny particles that make the universe. We will also be applying measurements and math to help us represent atoms, molecules, and chemical reactions. Advanced chemistry will challenge students with greater depth on many topics as well as more frequent and challenging application to math. Advanced Chemistry is recommended for students interested in AP chemistry, physics, or AP biology their senior year. This course will cover physical science Next Generation Science Standards.

Eco Design 1&2 (2 period block class)

Full year, Grades 9,10,11,12

Course Number: SCI621,622

Graduation Requirement: CTE and Science (Biology, Lab Science)

Prerequisites: None

Eco System Design studies environmental science and ecosystems through agricultural, using the FPSD Farm as a living laboratory. The course is designed as a hands-on course that digs into systems thinking, biology, and ecology concepts while learning practical skills of growing food, business, and leadership skills. Students will have access to state-of-the-art tools and resources on the Franklin Pierce Farm site and learn how to design sustainable systems by growing food from seed to harvest. This class is lab and activity heavy are held outside on the farm. *This course may fulfill a Career & Technical Education (CTE), Science, or an Elective credit.*

Physical Science 1&2

Full Year, Grade 10

Course Number: SCI211, 212

This course is designed to cover the Physical Science, Earth Science and Space Science NGSS that are a part of the Washington State Science Standards for the WCAS Exam they take during junior year.

Physical Science (Advanced) 1&2

Full year, Grade 10

Course Number: SCI221, 222

Prerequisites: Teacher recommendation. It is recommended that students take Biomedical Science in 9th grade to prepare them for AP Biology in 10th grade.

Pre-AP POLS is a freshman class introducing students to a formal lab science. Students will cover topics from Earth and Space Science and Physics while practicing science and engineering processes. This class is also preparation for future AP science classes.

Physics 1&2

Full year, Grade 12

Course Number: SCI411, 412

Prerequisites: Has taken Chemistry, Geometry, or AP Chemistry.

This course is for students that would like a 4th year of science. Emphasis is placed on problem solving skills that utilize a strong mathematical knowledge base. The course will address dimensional analysis, motion, forces, vectors, sound, light and electricity.

Advanced Placement

AP Biology 1&2

Full Year, Grades 11,12

Course Number: SCI131, 132

Prerequisites: Received a B or better in both semesters of Advanced Physical Science

This course is designed to be the equivalent of a year-long introductory biology course taken at a 4-year college. It differs significantly from lower-level science classes with respect to the depth and breadth of concepts covered, the kind of textbook used, the kind of laboratory activities done, and the effort and time that will be required of students. This course will greatly assist students in their preparation for college study and is highly recommended for students interested in a career in science or medical careers, or who simply enjoy Biology.

AP Chemistry 1&2

Full Year, Grades 11,12

Course Number: SCI331, 332

Prerequisites: Received a B or better in both semesters of Chemistry or AP Biology

This course is designed to be the equivalent of a year-long introductory chemistry course taken at a 4-year college. It differs significantly from lower-level science classes with respect to the depth and breadth of concepts covered, the kind of textbook used, the kind of laboratory activities done, and the effort and time that will be required of students. This course will greatly assist students in their preparation for college study and is highly recommended for students interested in science or medical careers, or who simply enjoy Chemistry.

AP Environmental Science 1&2

Full year, Grade 12

Course Number: SCI433, 434

Prerequisites: Has taken Principles of Lab Science and Biology or has taken Pre-AP Biology and Chemistry.

Explore and investigate the inter-relations of the natural world, environmental issues, and possible solutions in solving and preventing them.

Social Studies

Civics/CWP 1&2

Full Year, Grade 12

Course Number: SST411,412

Prerequisites: Senior Status only

This course meets state requirements for the study of the Constitution and governments of the United States. This course emphasizes the key principles of American democracy, the purpose, form and function of government institutions, and the ways in which citizens actively participate in their government. In addition, this course examines America's role in the world from a global perspective, including America's participation in international organizations and the methods through which America creates and conducts foreign policy.

Ethnic Studies

Semester, Grade 12

Course Number: SST617

Dual Credit: No

Prerequisites: none

Ethnic Studies focuses on the experiences of Native Americans, African Americans, Asian Americans, Latinxs, Chicanxs, and other racialized people in the US. The course will examine how race and racism have been, and continue to be, central to shaping, understanding, and reacting to American society. As we do this work, we will explore how these ideas create and concentrate economic, political, and social power, and how this in turn leads to inequalities. The objective to this work is for the student to gain consciousness about their personal connections to local and national history, and of their own potential as agents of social justice, civic responsibility, and cultural change.

United States History 1&2

Full year, Grades 11,12

Course Number: SST311,312

Juniors are required to complete two semesters in the area of American History 1, 2 or AP American History 1, 2. The American History 1, 2 will be a chronological study of the American States from Industrialization to present.

Washington State History

Semester, Grade 12

Course Number: SST611

Prerequisites: none

This course examines the unique impact of Northwest America's geography on the state of Washington. Native American cultures of the Pacific Northwest are studied. The history of exploration, early settlements and conflicts are reviewed. The rise of urban centers and their resulting human problems are examined.

World History 1&2

Full Year, Grade 10

Course Number: SST211,212

Prerequisites: none

World History is a class that will help students to reach an understanding of geographical relationships of historical change and development of political and economic systems as they have changed through time.

Beginning with the Enlightenment Period in the 1700's and concluding with the modern era, the course will look at the spread of ideas, customs and technologies through trade, migration and conquest.

Advanced Placement

AP Government & Politics (CWP & Civics) 1&2

Full year, Grade 12

Course Number: SST431,432

Prerequisites: Senior Status, subject to teacher approval

Recommended: AP United States History

AP United States Government and Politics introduces students to key political ideas, institutions, policies, interactions, roles, and behaviors that characterize the political culture of the United States. The course examines politically significant concepts and themes, through which students learn to apply disciplinary reasoning assess causes and consequences of political events and interpret data to develop evidence-based arguments. Students are required to take the AP Exam in May. College credit depends on AP exam score and individual college standards. This is a year-long course completing the requirement for CWP second semester.

AP Psychology 1&2

Full Year, Grades 11,12

Course Number: SST633,634

This course is designed to be the equivalent of a college introductory psychology class. This psychology course is designed to introduce you to the systematic and scientific study of the behavior and mental processes of human beings and other animals. You will be exposed to the psychological facts, principles, and phenomena associated with each of the major subfields within psychology. You will also learn about the ethics and methods psychologists use in their science and practice. This class is a full year commitment, and students are required to take the AP exam in May. College credit may be received from taking the AP test.

AP United States History 1&2

Full year, Grade 11

Course Number: SST331,332

Prerequisites: Junior Status, subject to teacher approval

Recommended: AP World History, pre-AP Sophomore English

AP United States History focuses on developing students' abilities to think conceptually about U.S. history from approximately 1491 to the present and apply historical thinking skills as they learn about the past. Seven themes of equal importance — identity; peopling; politics and power; work, exchange, and technology; America in the world; environment and geography; and ideas, beliefs, and culture — provide areas of historical inquiry for investigation throughout the course. These require students to reason historically about continuity and change over time and make comparisons among various historical developments in different times and places. Students are required to take the AP exam in May. College credit depends on AP exam score and individual college standards.

AP World History 1&2

Full Year, Grade 10

Course Number: SST231,232

Prerequisites: Sophomore Status, subject to teacher approval

Recommended: AP Human Geography, pre-AP Freshman English

AP World History focuses on developing students' abilities to think conceptually about world history from approximately 1200 CE to the present and apply historical thinking skills as they learn about the past. Five themes of equal importance — focusing on the environment, cultures, state-building, economic systems, and social structures — provide areas of historical inquiry for investigation throughout the course. AP World History encompasses the history of the five major geographical regions of the globe: Africa, the Americas, Asia, Europe, and Oceania, with special focus on historical developments and processes that cross multiple regions. Students are required to take the AP Exam in May. Cost of AP exam announced in September. College credit depends on AP exam score and individual college standards.

Support Center

Support Center 1&2

Full year, Grades 9,10,11,12+

Course Number: ELE201,202

Prerequisites: IEP determined

The Support Center at WHS is designed for students, beginning at 9th grade through the age of 21 with moderate to severe disabilities. The program focuses on preparing students for post-high school living. The curriculum focuses on the following areas:

- Functional Academics
- Occupational Guidance and Preparation
- Personal and Daily Living Skills
- Personal and Social Skills

The curriculum integrates functional academics with work-related and daily living skills. The curriculum also provides many opportunities for hands on experiences and incorporates cooperative learning principles. This curriculum works to develop self-advocacy skills and independence in all students while addressing the critical competencies students need in order to be productive individuals.

The Support Center Program currently consists of two programs, Phase I and Phase II.

- Phase I- Students in the first four years of high school are in Phase I. Their goals will be to work on functional academics, explore work, postsecondary education, independent living, and social-leisure options. They are active participants in the high school culture. Although students will spend the majority of their time in the support center class most will also attend general education classes.
- Phase II- Students in their last 3-4 years of high school, ages 18-21 years, will focus on obtaining postsecondary employment, residential, and leisure options. The intent will be to make school reflect the student's future as much as possible. Students will participate in community activities rather than high school events. They will be developing linkages with adult agencies, securing options for postsecondary employment, and developing community supports.

Theatre Arts

Drama

Semester, Grades 9,10,11,12

Course Number: FNA211

This is an introductory acting class that explores theatre performance techniques and script analysis. The class will perform monologues and create and perform in improvised scenes. This course is intended to develop acting skills and build upon the fundamentals of public speaking. Students will be expected to display an increased level of commitment and should be able to apply techniques developed in this course. The specific goal of this course is to develop skills in portraying characters on stage through their relationships to one another and to their environments. Students will be acting in improvisational scenes as well as monologues from a variety of plays by Twentieth Century playwrights. A strong emphasis will be placed on research and the analysis of play scripts in order to discover details of the environment, action, and intentions of the characters. Students are also expected to attend drama performances at WHS.

Drama (Advanced)1&2

Full Year, Grades 10,11,12

Prerequisites: Instructor's permission and must have passed Drama 1 and 2 with at least a B

Course Number: FNA213,214

Prerequisites: Students must have completed Drama 1 and 2 before enrolling in Advanced Drama.

Students will focus on methods of acting, directing technique, and theatre production. This course is designed for students who want to learn method acting technique, study theatre history through research and performance, and create their own scripts. The school play will be rehearsed during this class. Enrollment in this course requires after school rehearsals, and some Saturday rehearsals.

World Language

American Sign Language 1&2

Full Year, Grades 9,10,11,12

Course Number: WRL111,112

Dual Credit-CTE

Graduation Requirement: CTE or World Language

Prerequisites: None

American Sign Language Year 1 is a competency-based course of study. The class offers you highly specialized and technical training in the field of Deaf Studies. This class also prepares students for facilitating communication between Deaf and hearing people using American Sign Language (ASL). Students learn basic communication components of ASL, become familiar with Deaf culture, and welcome you as part of the Deaf community. *This course may fulfill a Career & Technical Education (CTE), World Language, or an Elective credit.*

American Sign Language 3&4

Full Year, Grades 10,11,12

Course Number: WRL113,114

Dual Credit: No

Graduation Requirement: CTE or World Language

Prerequisites: American Sign Language 1&2

American Sign Language Year 2 is a competency-based course of study. The class offers you highly specialized and technical training in the field of Deaf Studies. This class also prepares students for facilitating communication between Deaf and hearing people using American Sign Language (ASL). Students learn professional communication components of ASL, incorporate Deaf culture, and become participants in the Deaf community. *This course may fulfill a Career & Technical Education (CTE), World Language, or an Elective credit.*

American Sign Language 5&6

Full Year, Grades 11,12

Course Number: WRL115,116

Dual Credit: No

Graduation Requirement: CTE or World Language

Prerequisites: American Sign Language 1&2 and American Sign Language 3&4.

American Sign Language Year 3 is a competency-based course of study. The class offers you highly specialized and technical training in the field of Deaf Studies. This class also prepares students for facilitating communication between Deaf and hearing people using American Sign Language (ASL). Students learn technical communication components of ASL, incorporate Deaf culture, and become participants in the Deaf community. *This course may fulfill a Career & Technical Education (CTE), World Language, or an Elective credit.*

Spanish 1&2, 3&4, 5&6

Full year, Grades 9,10,11,12

Course Number: WRL101-102,103-104,105-106

Prerequisites: First year is open to all students. The 2nd and 3rd years are open to those students who have successfully completed the previous year or have tested out of certain years of Spanish. (ie heritage speakers of Spanish).

The objective in the first two years is to learn to understand and speak the language. Its outcome is the ability to understand the spoken language, to speak competently, to read without translation and to write adequately. The student will be exposed to the cultures represented by the language. The third year of study, a continuation of the development of oral competence and improvement is in skills in vocabulary building, reading, and writing. A variety of literature will be introduced. Native Spanish speakers are encouraged to enroll in order to develop literacy skills and enhance the immersion experience. Any student who received a grade of 'F' at the end of the semester will not continue in the class.

Advanced Placement**AP Spanish 1&2**

Full year, Grades 10,11,12

Course Number: WRL231,232

Prerequisites: Permission of teacher/counselor and/or completion of a minimum three years of language study. Heritage speakers will be encouraged to take 3rd year Spanish before entering into AP.

Subject material will involve extensive reading and writing in the target language in addition to exclusive use of Spanish. This will be the equivalent of 300-level course work at a college/university. The course load is that of a 300-level college course.

Additional Electives

Advanced Leadership 1&2

Full Year, Grades 10,11,12

Course Number: ELE231,232

Prerequisites: Subject to Advisor approval

Advanced Leadership helps students develop a deeper understanding of the characteristics of leadership and gives students the opportunity to grow as leaders through the implementation of a variety of student-led activities on campus. By teaching various leadership models, and the practical skills to apply them, Advanced Leadership prepares students to be leaders in any post-secondary setting. This class helps students grow as individuals, while promoting school spirit and helping to develop and maintain a positive and safe climate and culture at WHS. Advanced Leadership is also involved with local and state leadership programs including the SPSL Association of Student Councils, the Washington Association of Student Councils, and the Association of Washington Student Leaders, providing students the opportunity to meet and network with other student leaders around the state.

AVID

Full year, Grades 9,10,11,12

Course Number: 9th=ELE123,124

10th=ELE223,224

11th=ELE323, 324

12th=ELE423,424

Prerequisites: teacher permission (application process)

Advancement Via Individual Determination (AVID) is an academic elective course that prepares students for college readiness and success. Students receive instruction utilizing a rigorous college preparatory curriculum provided by AVID Center, tutor-facilitated study groups, motivational activities, and academic survival skills. The course emphasizes development of writing, inquiry, collaboration, organization, and reading (WICOR) skills, including rhetorical reading, analytical writing, collaborative discussion strategies,

tutorial inquiry study groups, preparation for college entrance and placement exams, college study skills and test-taking strategies, note-taking, and research. Requirements: Enrollment each year in academically challenging courses, commitment to remain in program through graduation, agree to and meet stipulations of the AVID student contract. Students must complete application and interview process to be accepted into the program.

Community Based Learning 1&2

As assigned by Special Services

Full Year, Grades 9,10,11,12

Course Number: ELE301,302

Prerequisites: Student, Parent, & Teacher Permission, IEP Determined.

The Community Based Teaching (CBT) Program is a competency-based, experiential learning environment that instills and increases a learner's social skills. The goal of the program is to create functional citizens that will have the necessary skills for employment, education enhancement, and life competencies for the 21st century: Life-long learning, personal accountability, self-responsibility, and self-confidence. Learners will become familiar with basic occupational skills, as well as the importance of teamwork, positive communications, positive human relations, job market, leadership, and self-improvement skills in academic and occupational settings (Special Education Pre-qualification.)

Learning Strategies 1&2

As assigned by Special Services

Full Year, Grades 9,10

Course Number: ELE103,104

Prerequisites: Student, Parent, & Teacher Permission, IEP Determined.

The focus of this course is to give students an opportunity to learn lifetime skills and learning strategies necessary to be successful productive students. Areas of study will include: school behaviors, organization skills, note taking, study skills, completing daily assignments, learning from verbal presentations, goal setting, and effective reading of textbooks.

Learning Strategies (Advanced) 1&2

As assigned by Special Services

Full Year, Grades 11,12

Course Number: ELE105,106

Prerequisites: Student, Parent, & Teacher Permission, IEP Determined.

This course is designed to provide students with important skills needed to be successful and productive in the workplace. It addresses the question, "What skills must I have to become an employable & effective worker?" This course focuses on knowing, planning, and selecting occupation possibilities. We also focus on appropriate work habits and behavior, as well as maintaining & securing employment while providing instruction in reading & math.

Tools for Success 1&2

Full Year, Grades 9,10,11,12

Course Number: ELE101,102

This class is designed to help special education students with study skills, self-advocacy skills, and organizational skills.

Advanced Placement

AP Psychology 1&2

Full Year, Grades 11, 12

Course Number: SST633, 634

This course is designed to be the equivalent of a college introductory psychology class. This psychology course is designed to introduce you to the systematic and scientific study of the behavior and mental processes of human beings and other animals. You will be exposed to the psychological facts, principles, and phenomena associated with each of the major subfields within psychology. You will also learn about the

ethics and methods psychologists use in their science and practice. This class is a full year commitment, and students are required to take the AP exam in May. College credit may be received from taking the AP



2021-22 Program Overview

The Pierce County Skills Center offers year-long Career and Technical Education programs designed to give students an in-depth look into specific career fields. PCSC courses are taught by industry professionals in state-of-the-art facilities. PCSC programs earn high school and college credit and prepare students to successfully transition to post-secondary education and the workforce. Additional details about PCSC programs can be viewed by visiting the PCSC website at www.pcskillscenter.org.

- Students attend their home high school for ½ day and PCSC for the other ½ day
- PCSC serves high school juniors and seniors
- Programs are tuition free, but may have program/testing fees
- Transportation is provided to and from each high school
- Students may earn up to 1.5 high school credits per trimester (total of 4.5 credits per year)
- Session Times: AM Session – 7:55am-10:25am, PM Session – 11:15am-1:45pm
- There is no cost to attend PCSC; however, some programs do have uniform and/or program fees

Students interested in attending PCSC should meet with their counselor to review credit status and complete a PCSC application. Applications for the 2021-2022 school year will be accepted beginning March 1, 2021.

To access the PCSC online application, visit our website at www.pcskillscenter.org.

2021-2022 Program Descriptions

Aerospace Composites

The Aerospace Composites program is designed to prepare students to fabricate, assemble and repair composite materials. Students design, build and repair composite parts and assemblies using the same techniques as our industry partners. Year 2 option available with instructor permission.

Dual Credit: Up to 14 credits

Certifications: First Aid/CPR, Locally-Developed Manufacturing Certificate

Credit Equivalency: Technical/3rd Year Math - 1.5, Occupational Ed - 3.0 (Per Year)

Aerospace Machining/Fabrication

The Aerospace Machining/Fabrication program is designed to teach hands-on skills, processes, and

technologies used in the aerospace and manufacturing industry. Students will learn technical sketching, precision measurement, computer-aided design/programming, fabrication/assembly, welding, and computer-aided manufacturing. Year 2 option available with instructor permission.

Dual Credit: Up to 23 credits

Certifications: First Aid/CPR, Locally-Developed Manufacturing Certificate

Credit Equivalency: Technical/3rd Year Math - 1.5, Occupational Ed - 3.0 (Per Year)

Automotive Technology

The Automotive Technology program is designed to train students for a variety of jobs within the automotive industry. Students will focus on maintenance and light repair in an environment set up just like an automotive service department. Students will service and diagnose vehicles, complete tune-ups, conduct brake and suspension repairs, and perform wheel alignments. Year 2 option available with instructor permission.

Dual Credit: Up to 13 credits

Certifications: First Aid/CPR, ASE (varies - up to 10 certifications available), Valvoline, SP2

Credit Equivalency: Occupational Ed - 4.5 (Per Year)

Construction Trades

The Construction Trades program is a State of Washington approved pre-apprenticeship program designed to prepare students for direct entry into an apprenticeship by meeting rigorous academic and industry standards. This course covers both residential and commercial construction with an emphasis on job site safety through hands-on projects, guest speakers and field trips. Students will learn framing, roofing, blueprint reading, estimating costs, and site preparation. Students who meet ALL course competencies with a B or better will be granted preferred enrollment and advanced placement in the Carpenters-Employers Apprenticeship & Training Trust Fund. Year 2 option available with instructor permission.

Dual Credit: Up to 25 credits

Certifications: First Aid/CPR, Carpenters 1, 2 & 3, Forklift, OSHA 10, Pre-Apprenticeship Certificate

Credit Equivalency: Technical/3rd Year Math - 1.5, Occupational Ed - 3.0 (Per Year)

Cosmetology

The Cosmetology program is designed to train students in haircutting, current styling trends, hair coloring, and safety and sanitation in a hair salon setting. Students will begin the program in July before their senior year through the next August after graduation and will earn the 1,400 hours (5 quarters) of instruction required to take the state licensing examination. Students are encouraged to attend Clover Park Technical College for two additional quarters to earn an Associate's Degree. Students must be prepared to attend classes in the evenings and must provide their own transportation.

Program Requirement: Students must be a senior.

Off Site: Clover Park Technical College

Dual Credit: Up to 93 credits

Certifications: Washington State Cosmetology License

Credit Equivalency: Chemistry-Other - 1.5, Occupational Ed - 3.0 (Per Year)

Criminal Justice

The Criminal Justice program is designed to prepare students with preliminary training for careers in law enforcement. Upon completion of this program, students will have a working knowledge of criminal law, policing procedures, forensics, and their application to the various divisions of the criminal justice system.

Dual Credit: Up to 17 credits

Certifications: FEMA Incident Command Systems 100, 200 & 700; First Aid/CPR

Credit Equivalency: Fitness & Conditioning Activities - 1.5, CWI or Civics - 1.5, Occupational Ed - 1.5 (Per Year)

Culinary Arts

The Culinary Arts program is designed to prepare students for a promising career in the food service or hospitality industry. Students will learn kitchen procedures, sanitation and safety, menu planning and costing, dining room service, baking/food preparation, and banquet and catering service taught by industry professionals in a state-of-the-art facility. Students will also assist in the operation of our on-site café, *The Glacier Grill*. Year 2 option available with instructor permission.

Dual Credit: Up to 15 credits

Certifications: WA State Food Handler's Permit, National ServeSafe Certification, First Aid/CPR

Credit Equivalency: Creative Arts-Sculpture - 1.0, Occupational Ed – 3.5 (Per Year)

DigiPen Video Game Development/AP Computer Science Principles

The DigiPen Video Game Development program is designed to teach students to create video games using trigonometry and higher math, computer programming in C#, as well as 2D and 3D animation. This course will prepare students with the skills necessary for the video game industry's need for qualified video game programmers and artists. Year 2 option available with instructor permission.

Prerequisite: Successful completion of *Algebra I*

Dual/College Credit: Up to 5 credits. Students will also take the Advanced Placement Computer Science Principles exam

Certifications: Unity, First Aid/CPR

Credit Equivalency: Technical/3rd Year Math - 1.5, Occupational Ed - 3.0 (Per Year)

Fire Science & Emergency Services

The Fire Science & Emergency Services program is designed to prepare students for a career as a firefighter and other emergency services careers such as, EMT, fire investigator, and building investigator. Students will learn the academic requirements associated with being a firefighter including wildland firefighting. Students will use industry firefighting equipment such as hoses, turnout gear, SCBAs, and a working fire engine. Year 2 option available with instructor permission.

Dual Credit: Up to 15 credits

Certifications: First Aid/CPR, FEMA Incident Command Systems 100, 200 & 700, Wildland Firefighting

Credit Equivalency: Fitness & Conditioning Activities - 1.5, Occupational Ed - 3.0 (Per Year)

Information Technology Services (ITS) & Cybersecurity

The ITS & Cybersecurity program is designed to provide students with a broad understanding of the installation, troubleshooting, and management of computers, hardware, and computer networks in alignment to industry standards. Students will also learn cybersecurity fundamentals and automation for factories using Programmable Logic Controllers (PLCs). Year 2 option available with instructor permission.

Dual Credit: Up to 17 credits

Certifications: A+, Network+, Security+, PC Pro, Ethical Hacker Pro, MCSE (Testing Fees May Apply)

Credit Equivalency: Technical/3rd Year Math - 1.5, Occupational Ed - 3.0 (Per Year)

Medical Careers (NA-C)

The Medical Careers program is designed to prepare students for initial certification as a Nursing Assistant (NA-C) as well as continued training in nursing. Students spend time in the classroom and in an assisted living facility learning many procedures for patient care including: taking blood pressure, temperature, pulse and respirations, as well as learning how to bathe, groom, feed, lift, exercise, and position patients. Transportation is required for clinicals. **Program Requirements:** Students must be a senior and pass a criminal background check.

Prerequisite: Successful completion of Biology or other related science class.

Dual Credit: Up to 22 credits

Certifications: First Aid/CPR, Nursing Assistant Certification, WA State HIV/AIDS Training

Credit Equivalency: Health - 1.5, Biology-Other - 1.5, Occupational Ed - 1.5(Per Year)

Pre-Pharmacy Technology

The Pre-Pharmacy Technology program introduces students to the skills needed for entry-level positions in retail, hospital or mail-order pharmacies. Students will learn how to process prescriptions, prepare IV medications, order and stock medications, as well as operate and troubleshoot automated drug dispensing systems. Students will also learn about disease, medication therapy, anatomy & physiology and medical terminology. This program will provide a foundation for students who want to pursue a career as a pharmacy technician or pharmacist.

Prerequisite: Biology or other related science class.

Dual Credit: Up to 7.5 credits

Certifications: First Aid/CPR, Pharmacy Assistant, HIPAA, WA State HIV/AIDS

Credit Equivalency: Anatomy & Physiology - 1.0, Health - 1.0, Life Science - 1.0, Occupational Ed - 1.5 (Per Year)

Pre-Physical Therapy & Sports Medicine

The Pre-Physical Therapy & Sports Medicine program is designed to provide students with a hands-on experience in evaluation, acute care and rehabilitation skills. This program will also teach students about Kinesiology (the study of human movement), human anatomy and physiology, ethics, and taping procedures. This course is a first stop for students interested in becoming a certified athletic trainer, strength and conditioning coach, physical therapy assistant or physical

therapist. Year 2 option available with instructor permission.

Prerequisite: *Biology or other related science class.*

Dual Credit: Up to 15 Credits

Certifications: First Aid/CPR

Credit Equivalency: Anatomy & Physiology - 1.5, Fitness & Conditioning Activities - 1.5, Occupational Ed - 1.5 (Per Year)

Pre-Veterinary Technology

The Pre-Veterinary Technology program is designed to prepare students for a career in animal healthcare and provides a foundation for employment in fields such as veterinary medicine, agriculture, research, and fish and wildlife, as well as, training in grooming services. Students will gain experience through classroom activities and daily handling of resident animals in a realistic setting that models worksites in the industry. Year 2 option available with instructor permission.

Prerequisite: *Successful completion of high school Biology or equivalent class.*

Dual Credit: Up to 2 credits

Certification: First Aid/CPR

Credit Equivalency: Zoology - 1.5, Occupational Ed - 3.0 (Per Year)