



Nottingham Elementary School

project advisory team

March 10, 2021 | 3:30pm – 5:30pm

design meeting #3

TEAM



Becky Hagan
Nottingham Elementary School Principal

Travis Stanford
Associate Superintendent for Operations

Max Buja
Director of Planning and Construction

Noel Moreno
Project Manager

Kris Drosche
Project Manager



Brandon Ross
Partner

Melissa Turnbaugh
Partner

Jorge Tiscareño
Design Principal

Daniel De La Garza
Principal / Senior Designer

Philip Stewart
Senior Project Manager

Juan Valdez
Project Manager

PAT TEAM

Campus Principal

Becky Hagan

Assistant Principal

Sherrie Folger

Parents

Tara Cunningham-Baker
Kristin Anderson

Campus Staff

Kelli Atkinson
Sabrina Lay

PTA President

Linda Dang

HOA Representatives

Ysella Kaseman
Peter DallePezze
Cassie McClung

CIT Members

Watson Potter
Wayne Watson
Courie Anderson
Sarah Davidson
Tonya Spell
Megan Kessler
Claire Mercaldo
Payton Kingsley
Sarah Dale
Sabrina Lay
Melanie Marshall
Thomas Debesse
Jeanette Choy
Kelly Borally
Stacey Zubair

Business Representative

James Warren

PAT #3 Meeting AGENDA

10 min	PAT Charge & Process, Project Overview & Schedule
5 min	PAT #2 Recap Guiding Principles
5 min	PAT #2 Recap – Discussion outcome on the 4 options
60 min	Present Site & Floor Plan Organization Concepts
35 min	Exterior and Interior Character images
5 min	Next Steps

SUPERINTENDENT PROJECT ADVISORY TEAM (PAT) CHARGE

GOAL

- The goal of the PAT is to ensure that parents, staff and community members have the opportunity to take part in the planning and design of new schools.
- The PAT will meet as needed throughout the project, from initial planning, through design to the start of construction.
- The PAT concludes its work once construction begins.

CHARGE

- Each Project Advisory Team's (PAT) members are charged with **providing input into planning and design development** for their school's new construction or major renovation project in the 2017 Bond Program.
- The PAT members will **serve as communicators** to and from the community during the design phases of the project and participate in discussions that will lead to recommendations.
- Recommendations will not regard standards, programs, policies, and pedagogy.
- These recommendations will be reached through consensus, and be presented to the Board of Trustees.



THOUGHTFUL EXPLORATION



HANDS ON ENGAGEMENT



INFORMED AND COLLABORATIVE DECISION MAKING

OVERALL PROJECT SCOPE

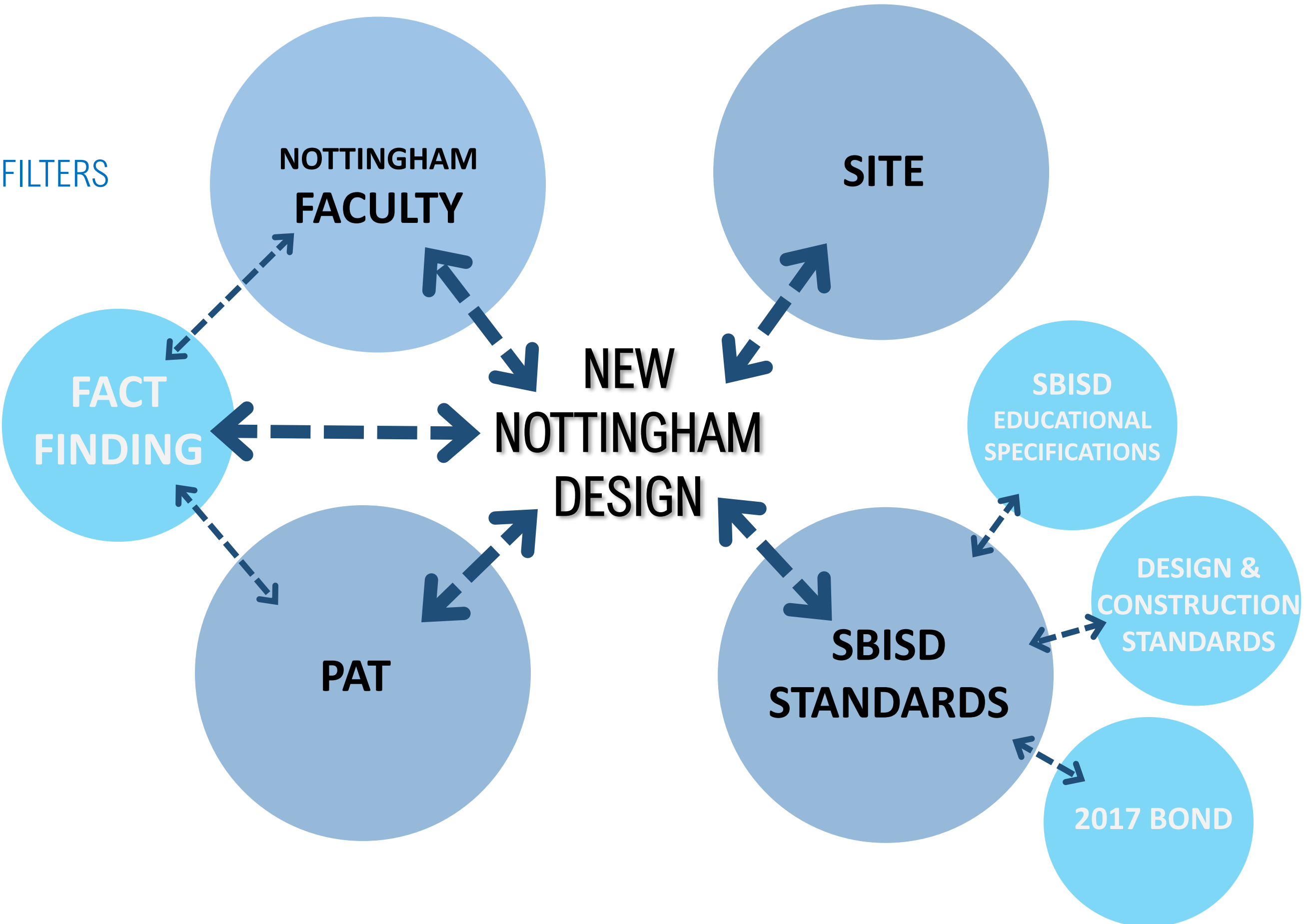
REPLACEMENT NOTTINGHAM ES
min 750 STUDENT CAPACITY
+/- 105,000 GSF

REPLACE SCHOOL ON EXISTING CAMPUS
WHILE EXISTING SCHOOL IS OPERATIONAL

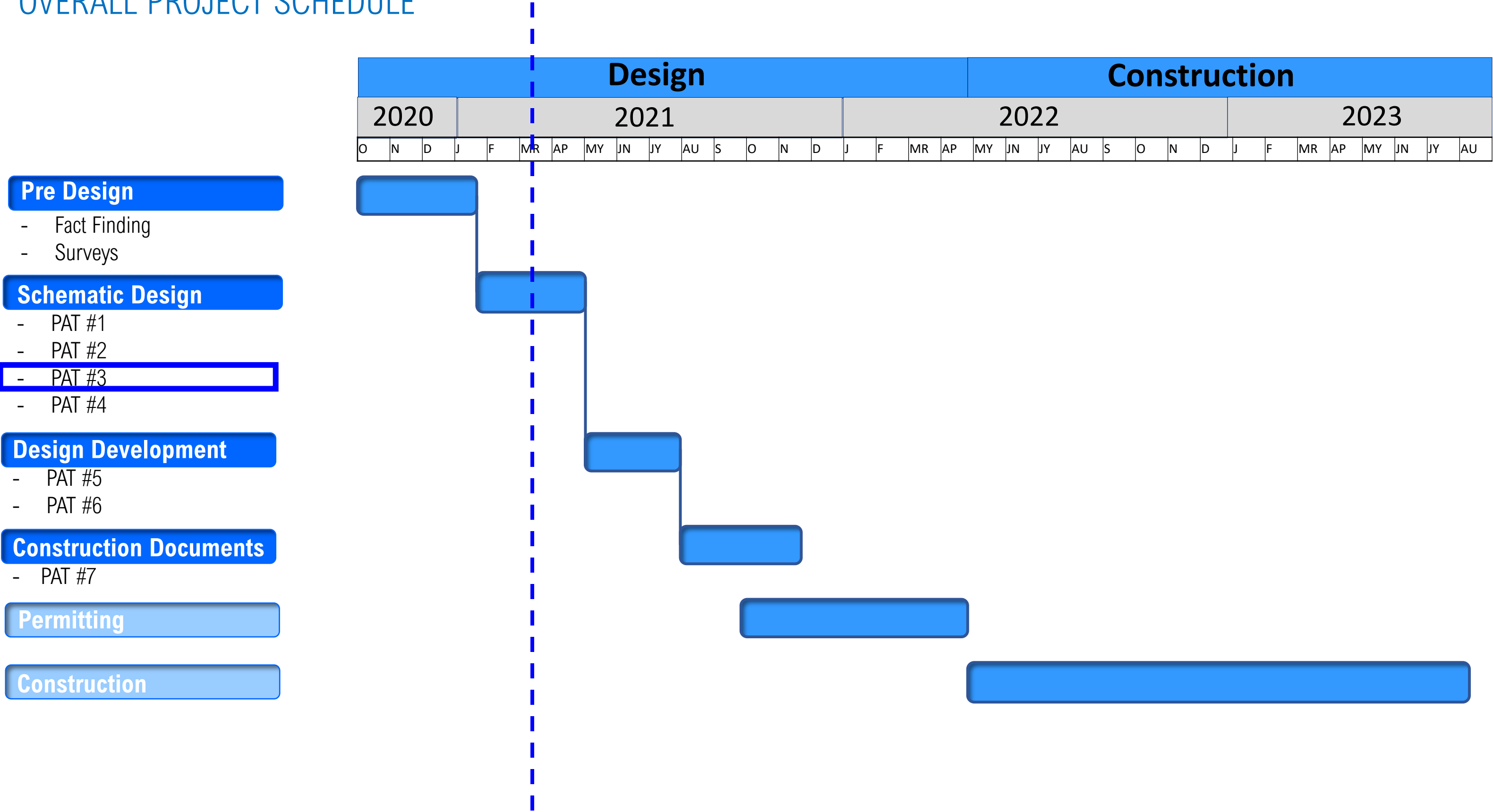
OPENING OF FALL 2023



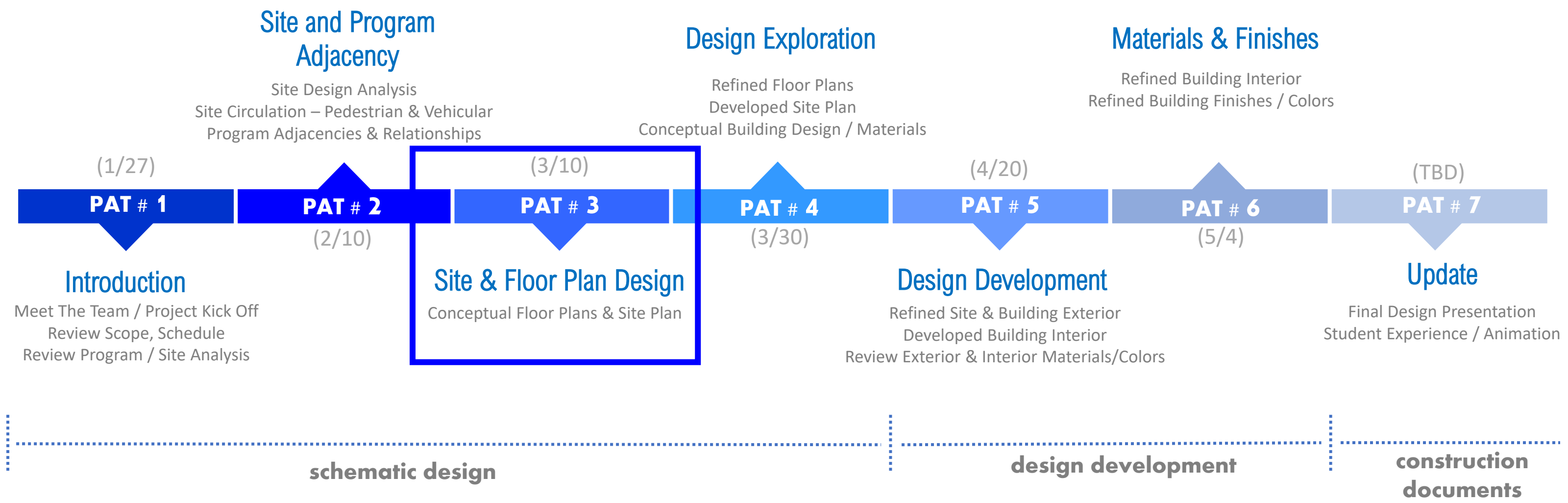
DESIGN LENS FILTERS



OVERALL PROJECT SCHEDULE



PAT SCHEDULE DETAIL (meetings 3:30 PM - 5:30 PM)



PAT BUILDING DESIGN PROCESS

SITE

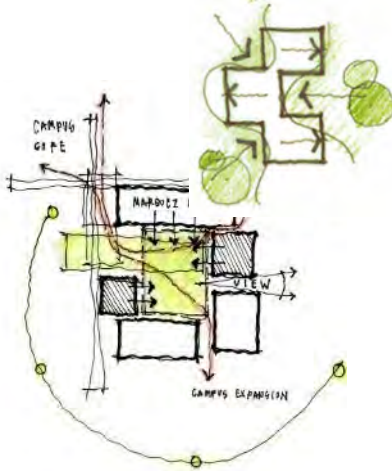
FLOOR PLAN

BUILDING

PAT # 1



PAT # 2



PAT # 3



PAT # 4



PAT # 5



PAT # 6



conceptualize

develop

refine

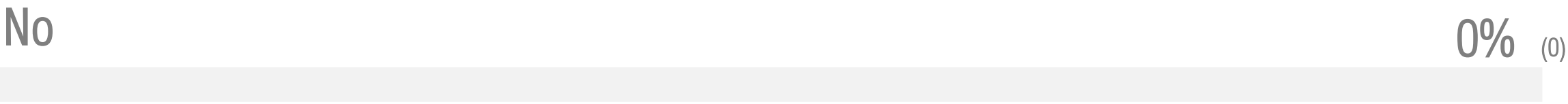
schematic design

design development

PAT #2 RIGHT DIRECTION POLL

Poll Result

Are we heading in the right direction for the New Nottingham Elementary design after PAT#2?



** 3 PAT members did not vote

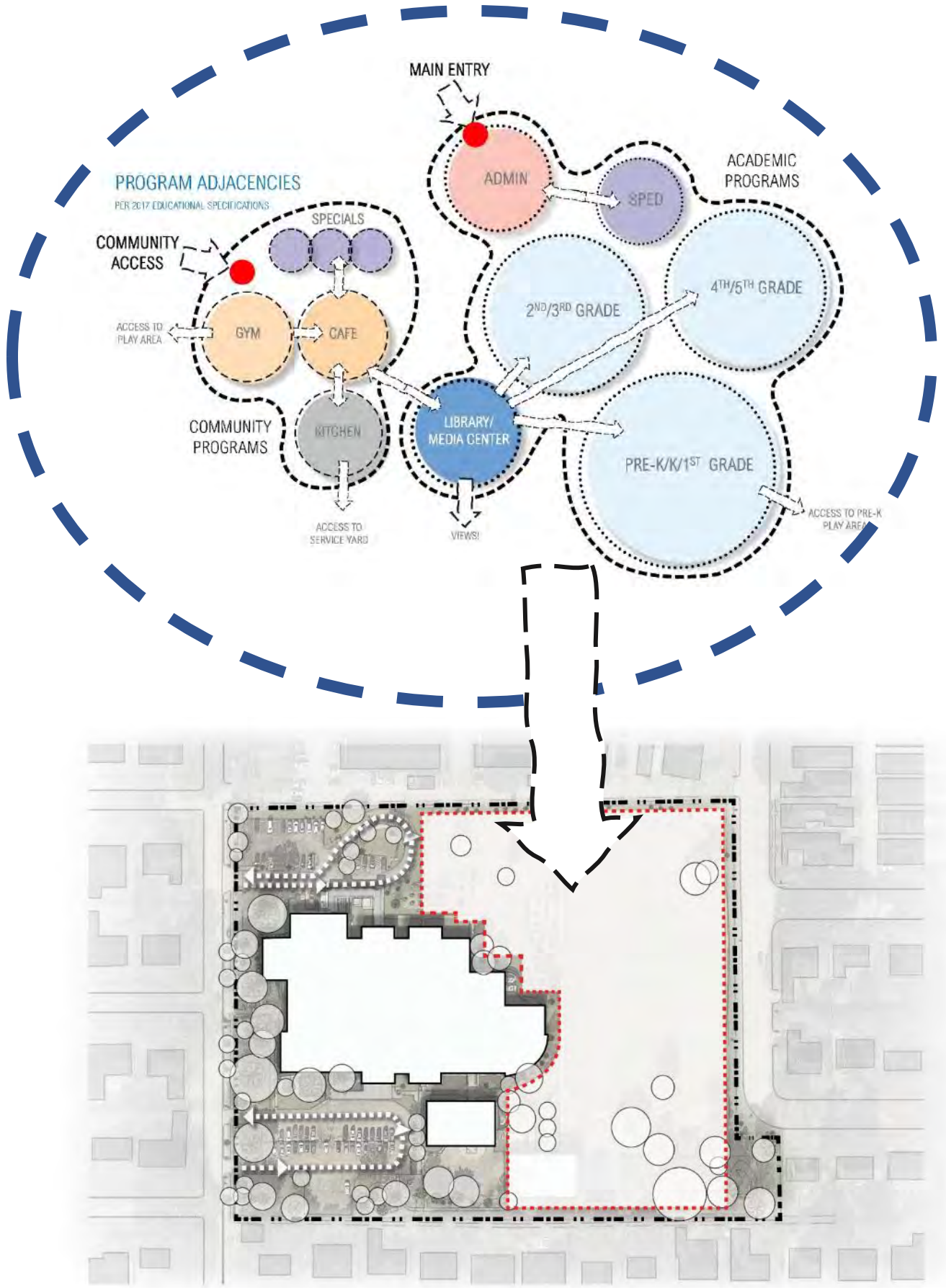
PAT GUIDING PRINCIPLES

We take these with us moving forward



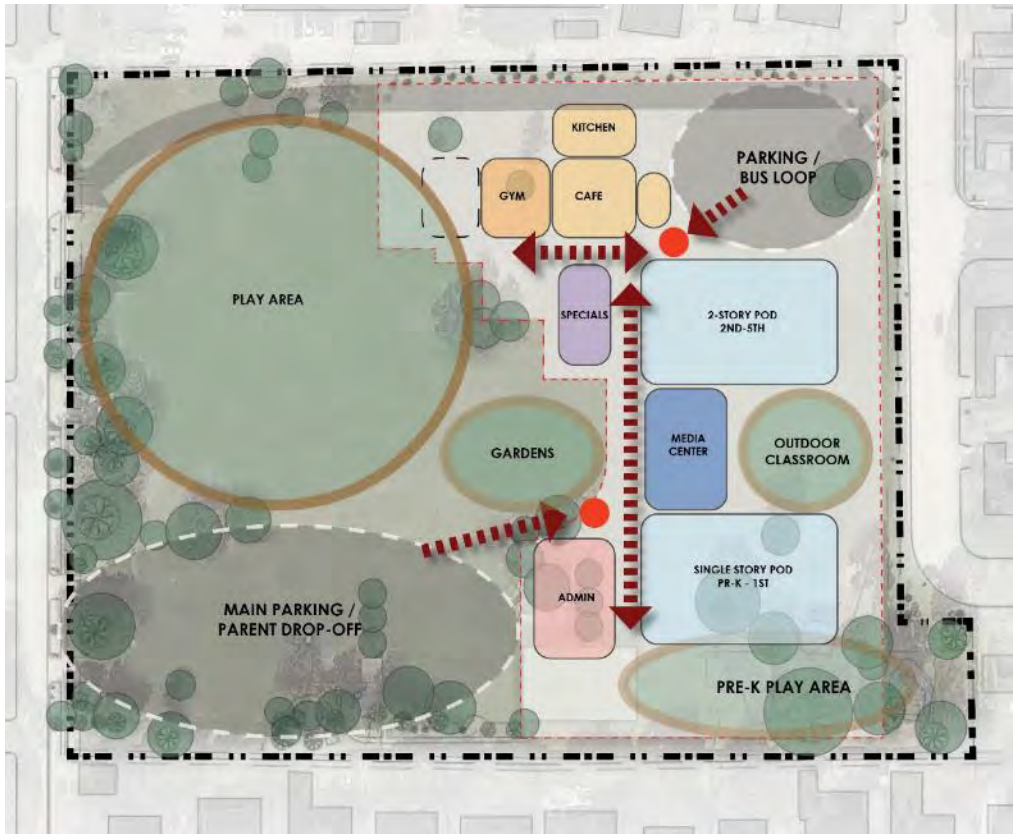
RECAP FROM PAT#2

WE EXPLORED 4 OPTIONS BASED ON PAT #1
FEEDBACK AND DISCUSSED

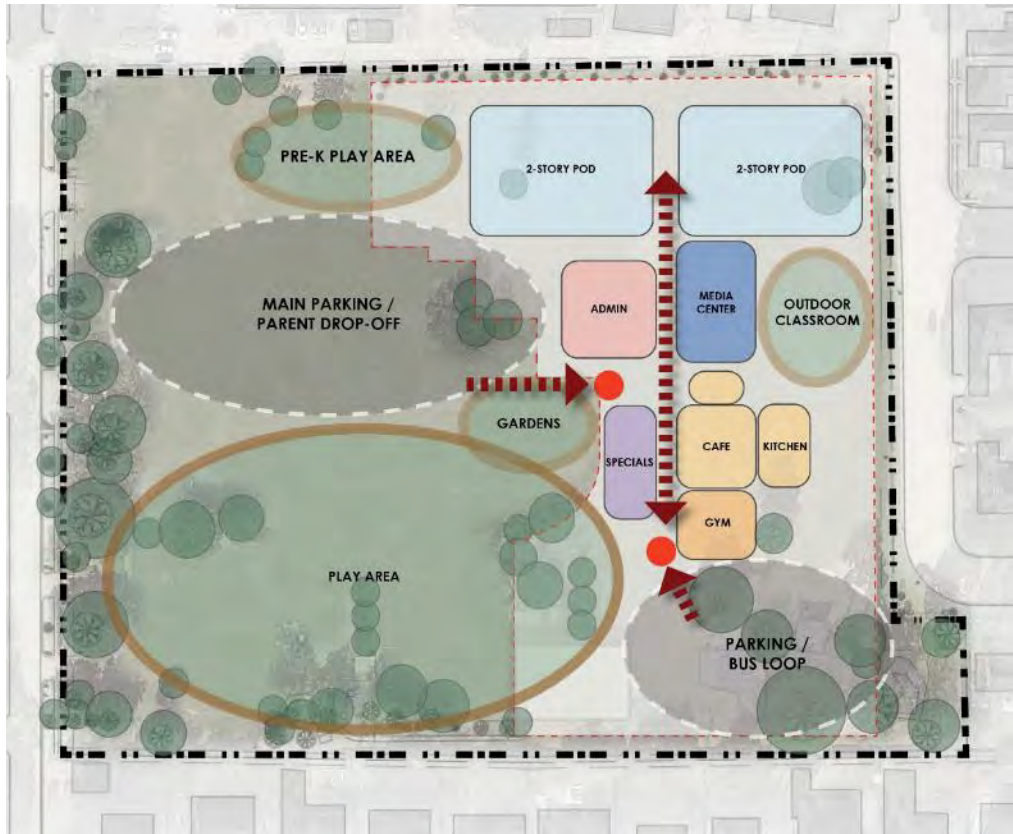


PROGRAM DIAGRAMS

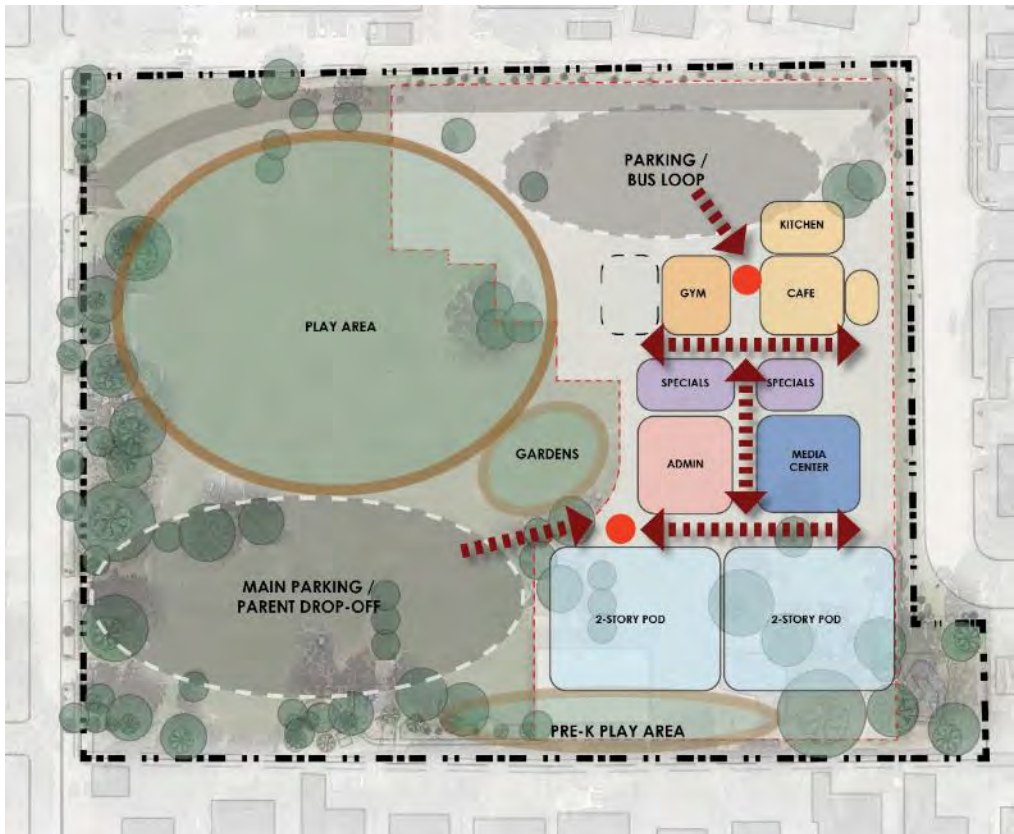
1



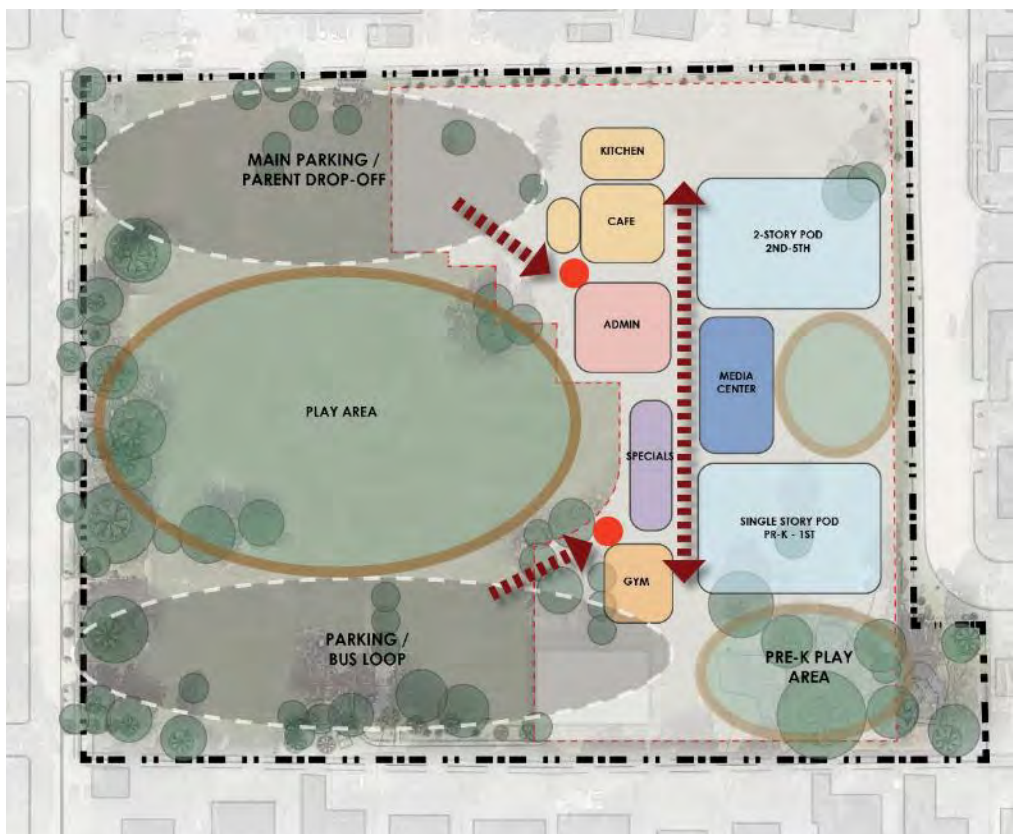
2



3

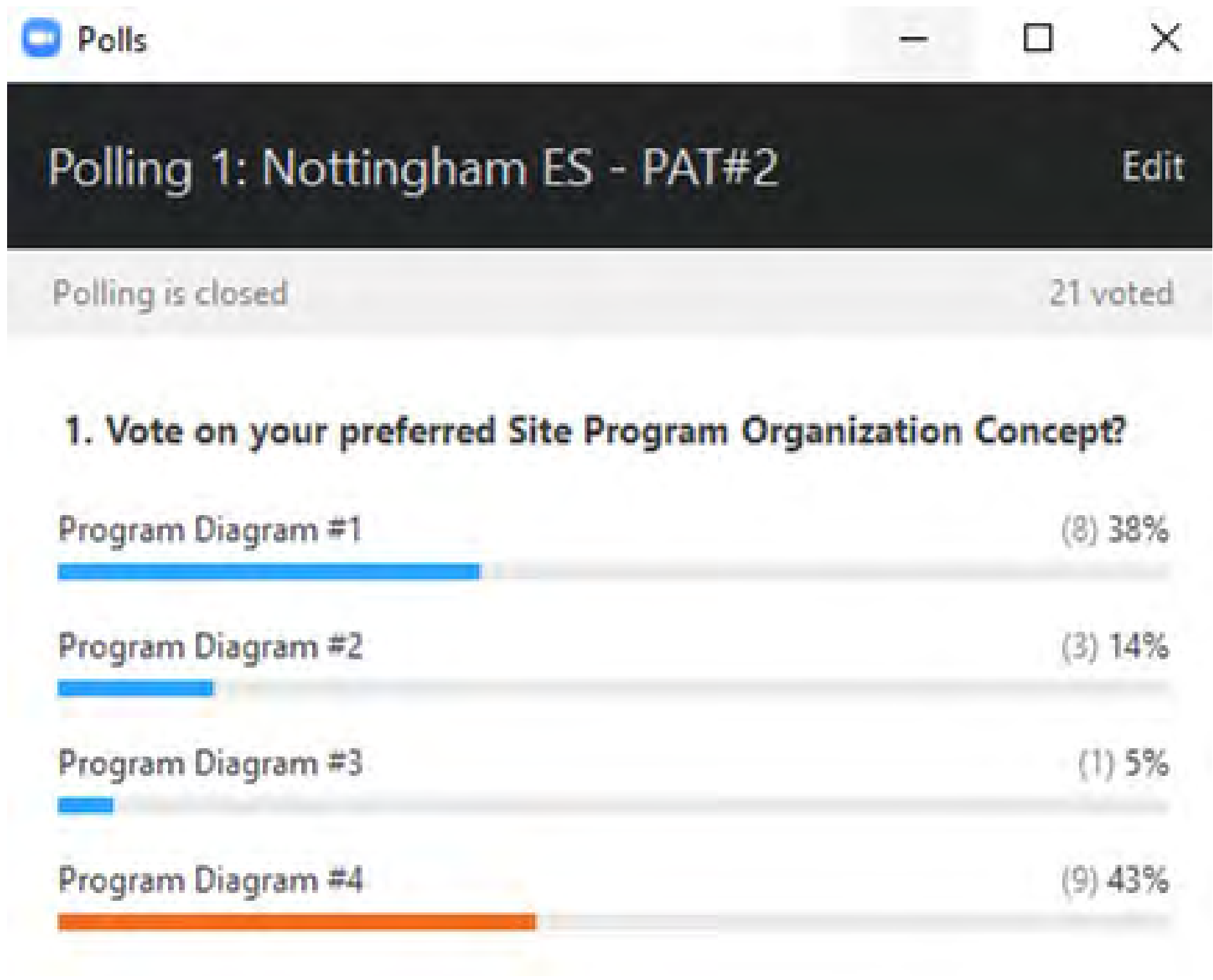


4



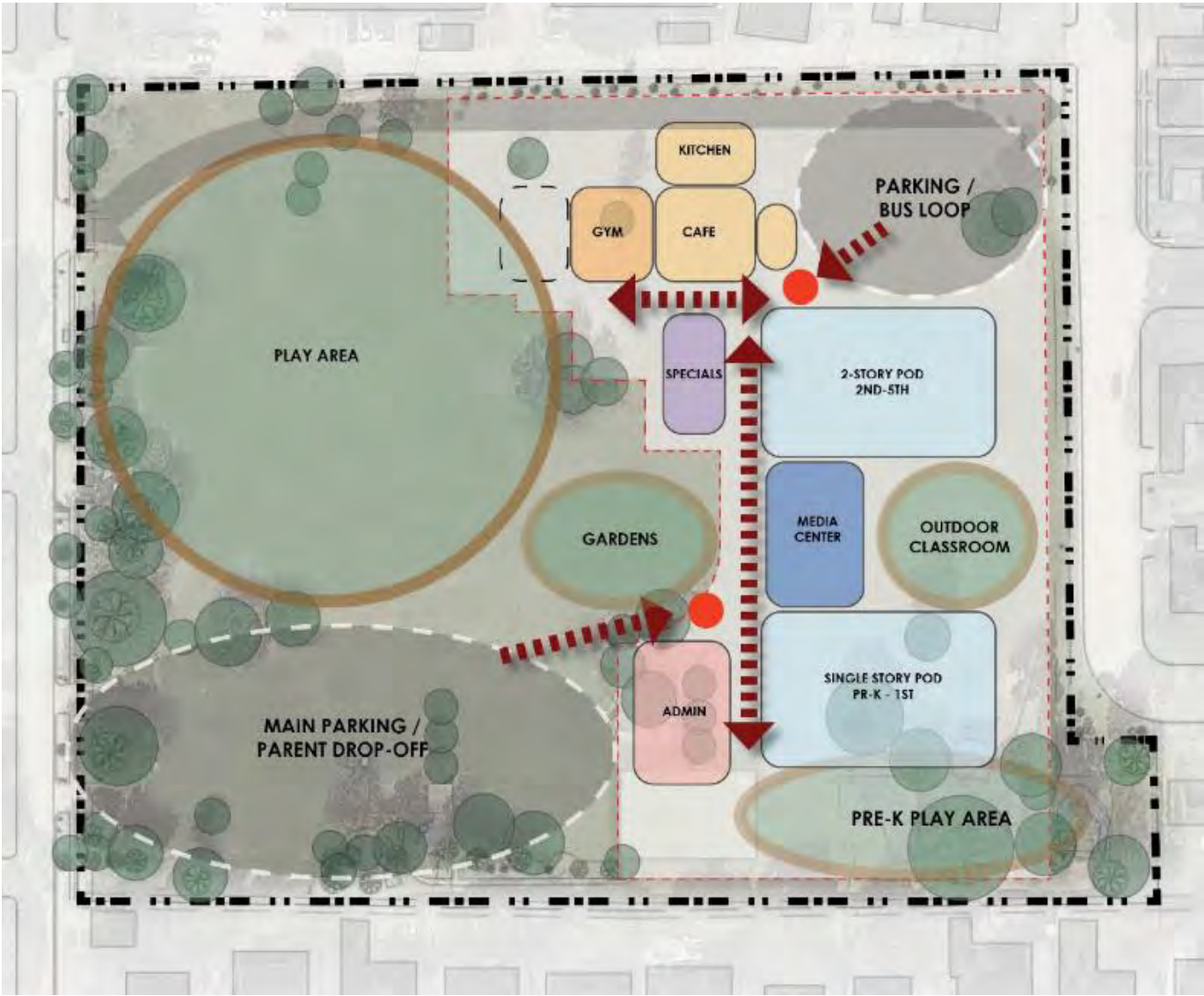
PROGRAM DIAGRAMS

VOTE RESULTS

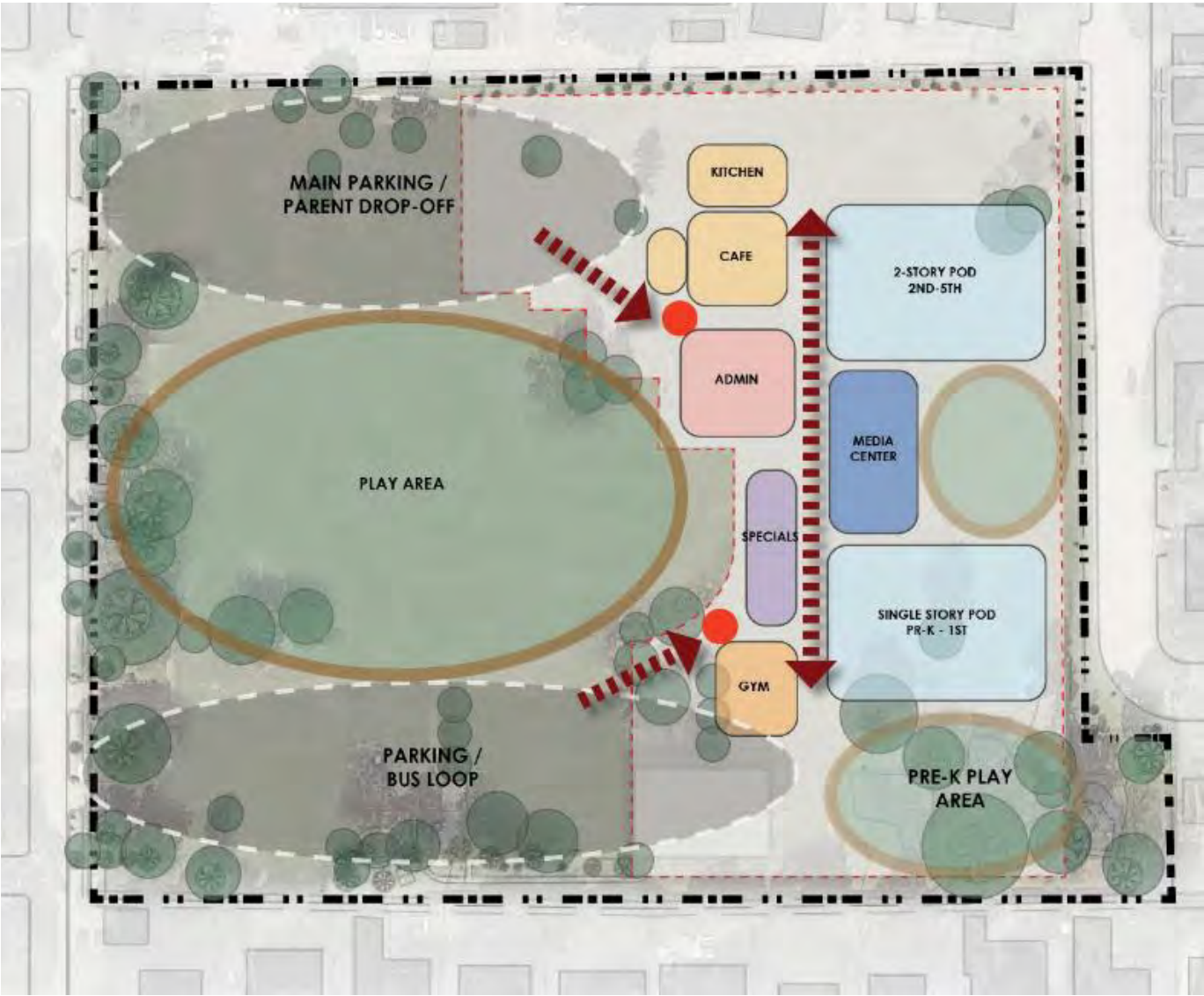


PROGRAM DIAGRAMS

1



4

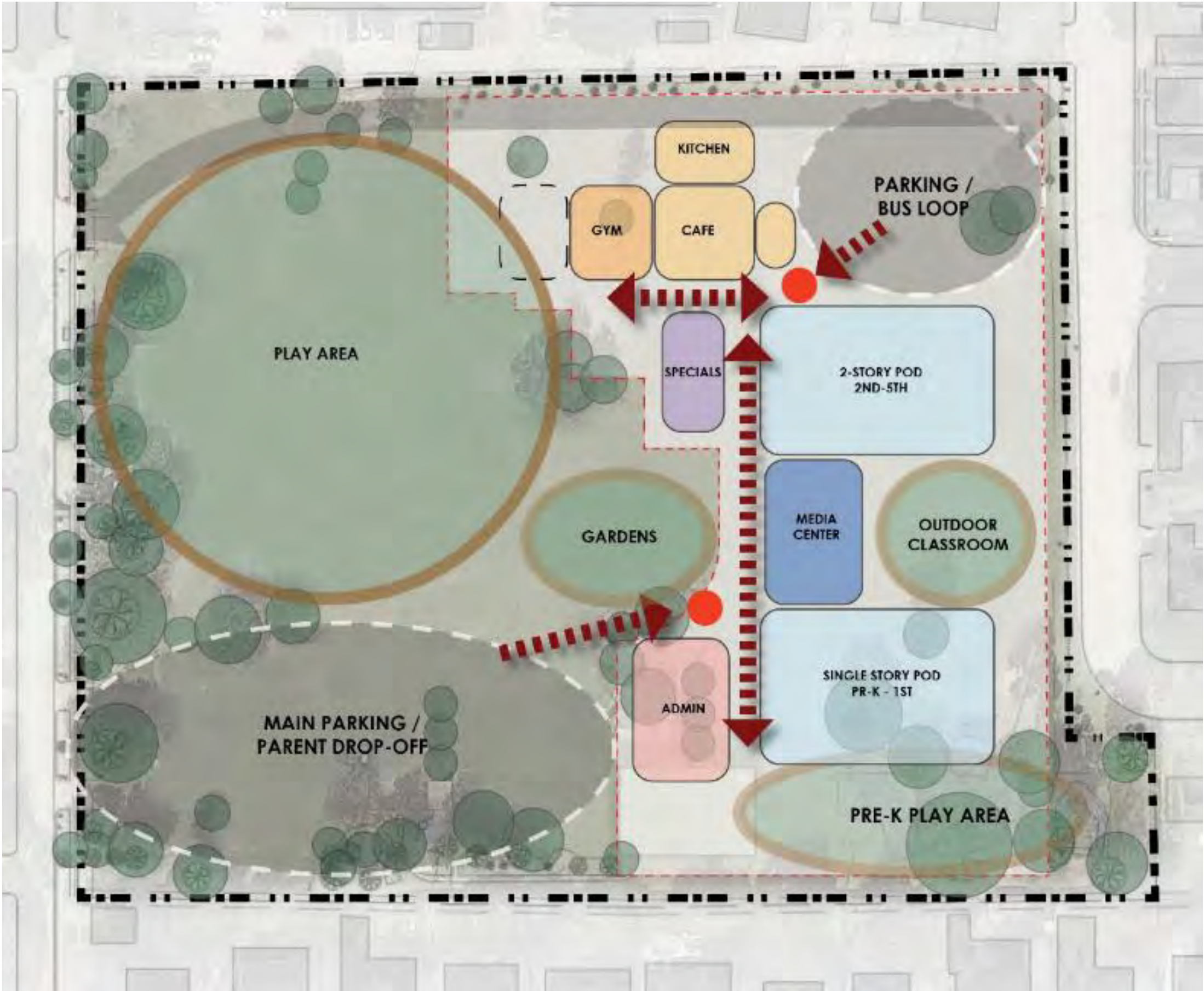


Here is what we heard...

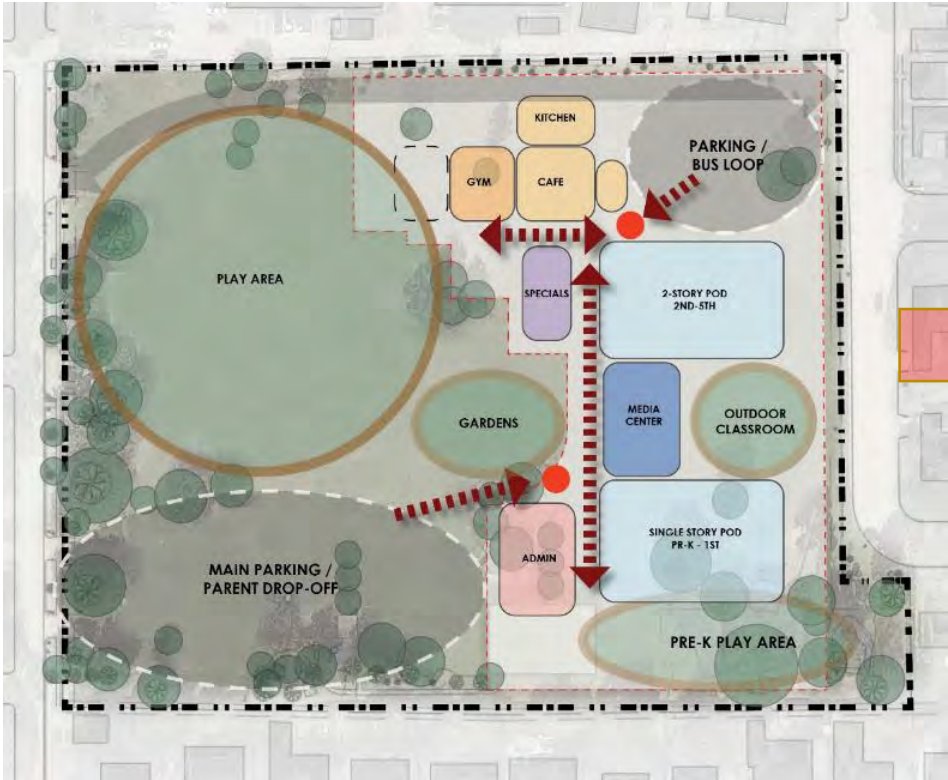
SITE AND FLOOR PLAN OPTIONS AND DISCUSSION

SITE CONCEPT 1 FROM PAT 2

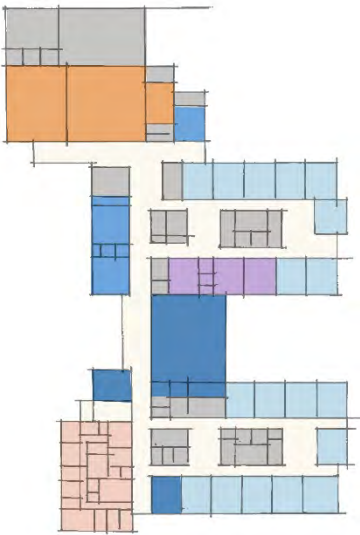
1



SITE CONCEPT 1 development



Conceptual Diagram



Initial Plan Layout

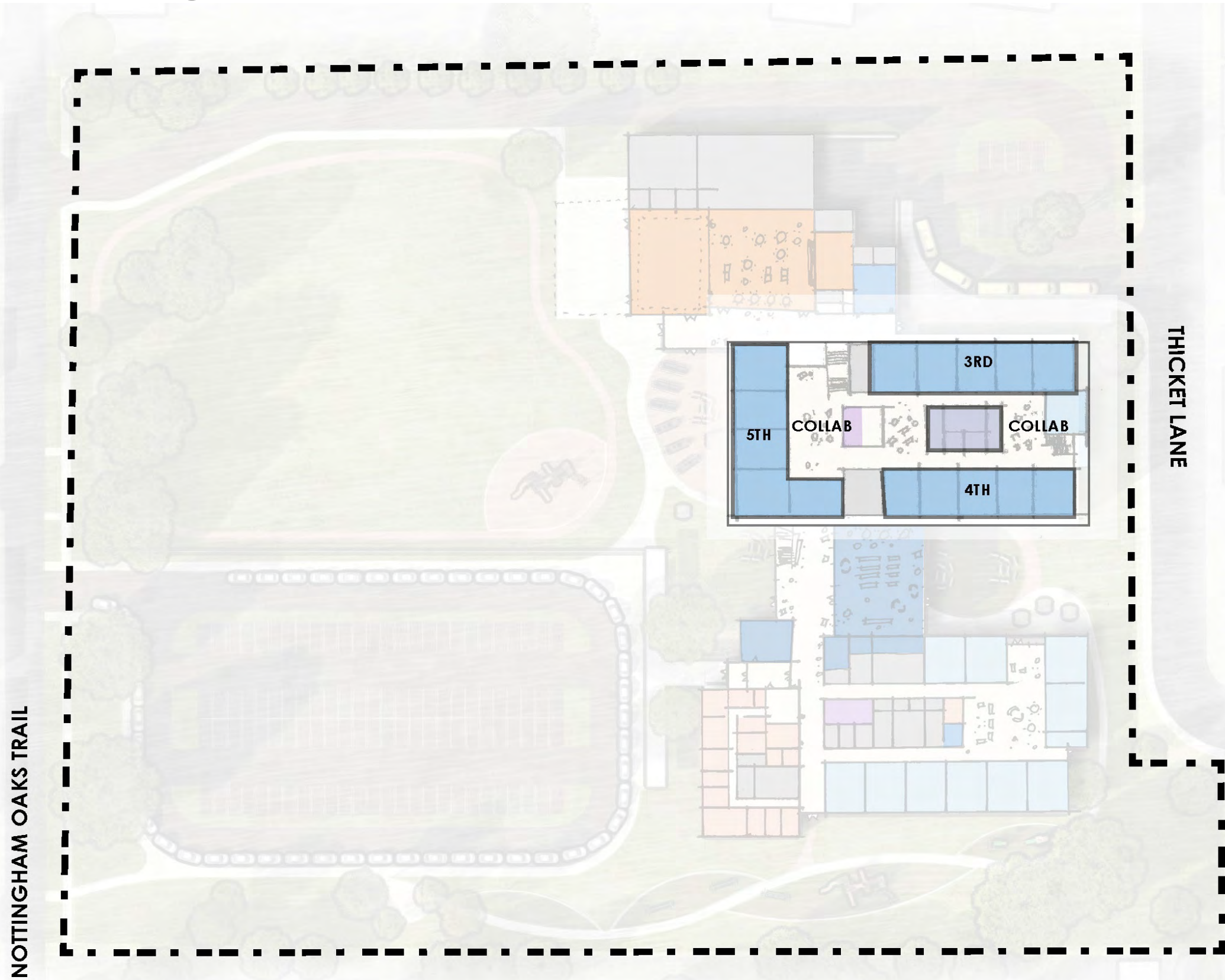


Floor Plan Refinement

SITE CONCEPT 1: program blocks FIRST FLOOR



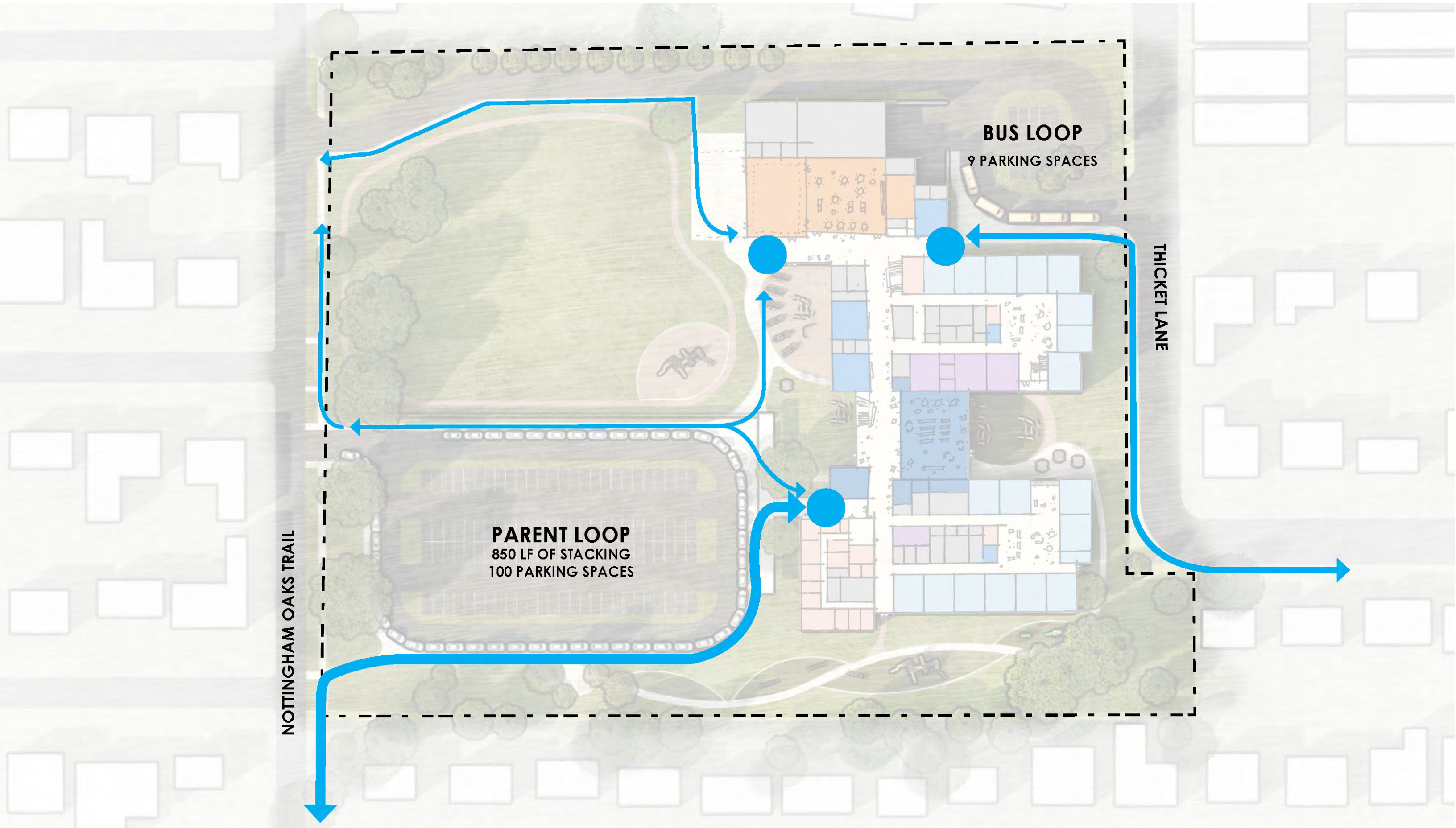
SITE CONCEPT 1: program blocks SECOND FLOOR



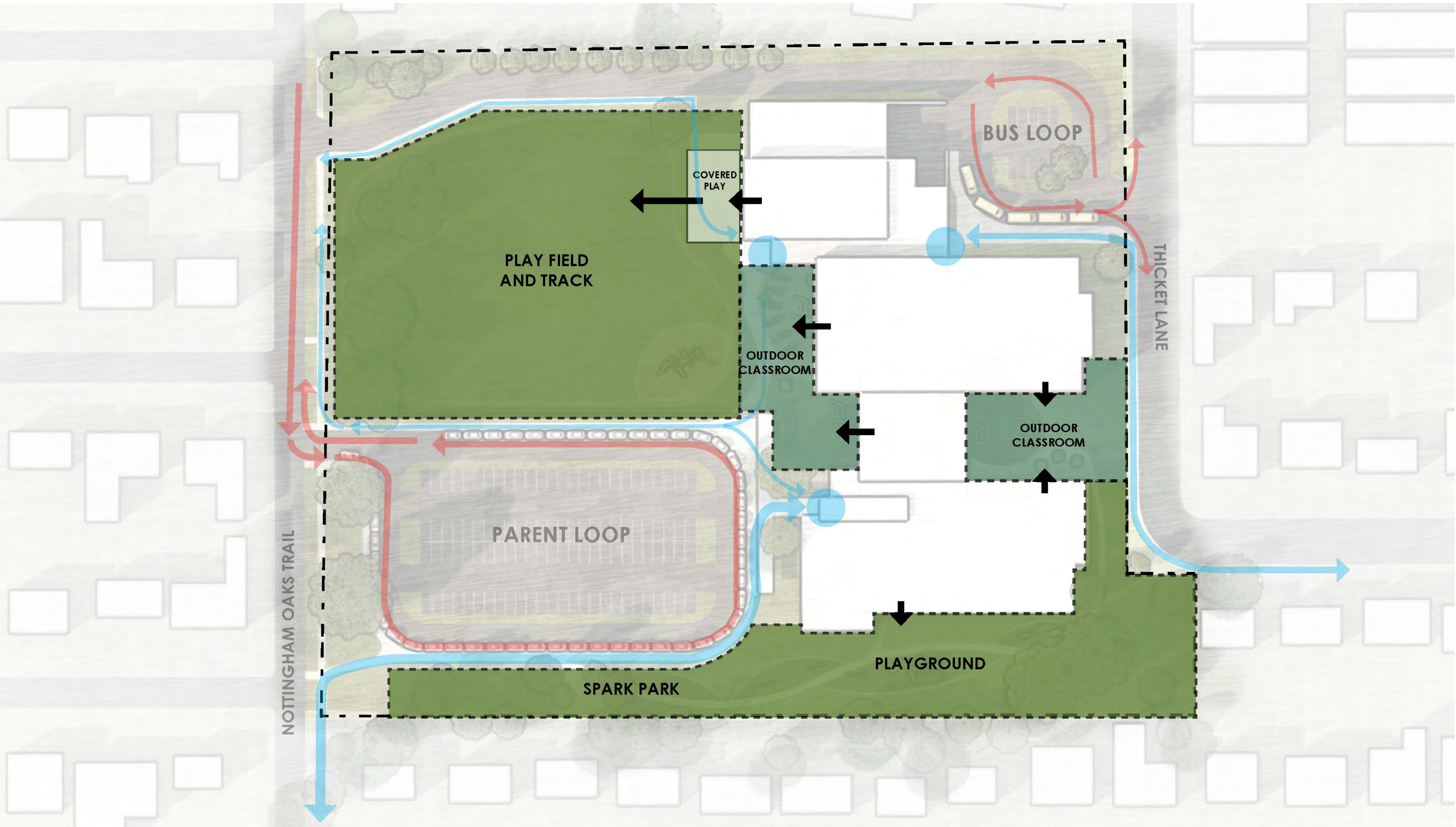
SITE CONCEPT 1: floor plan and site plan



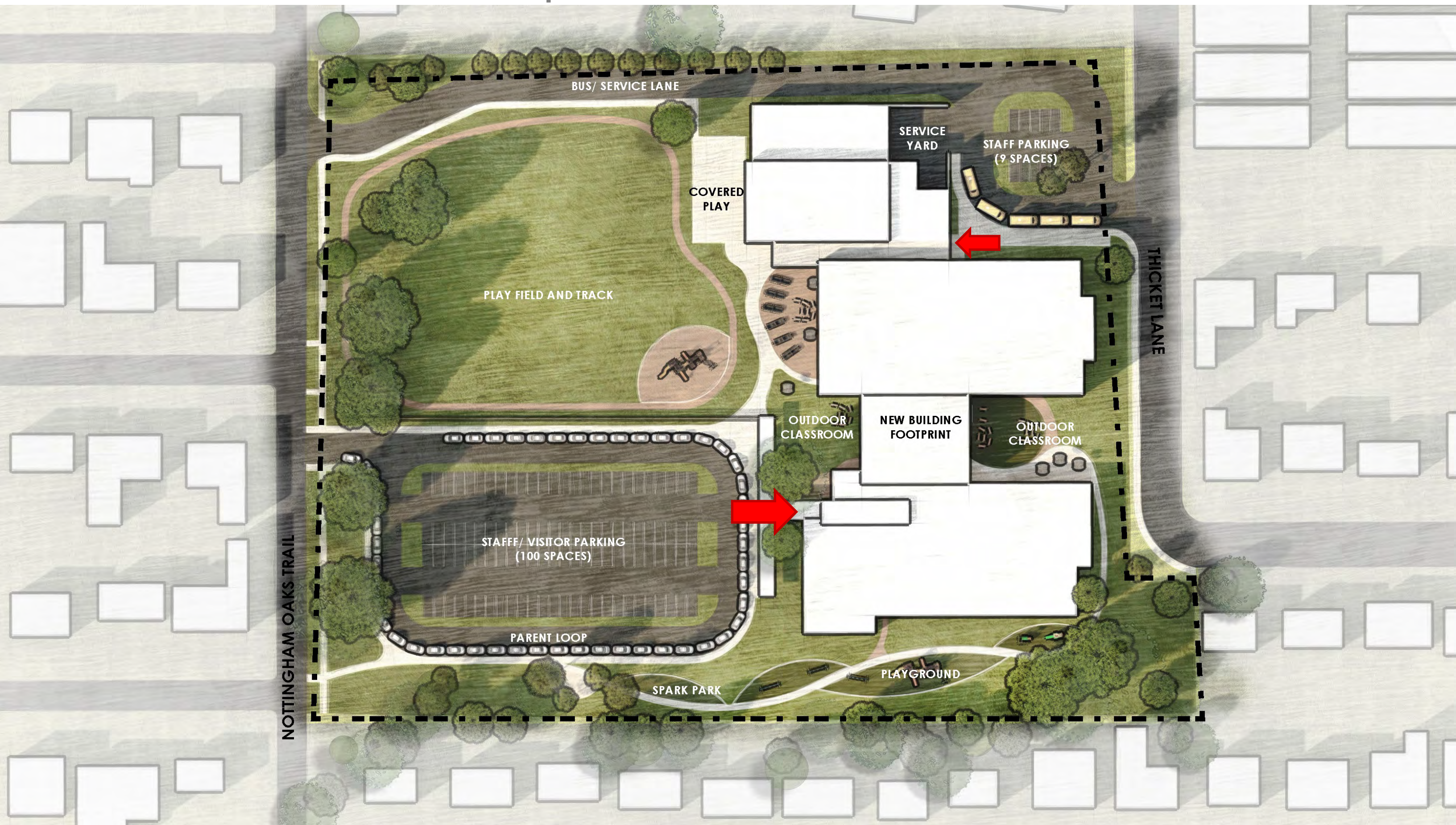
SITE CONCEPT 1: pedestrian circulation



SITE CONCEPT 1: outdoor space

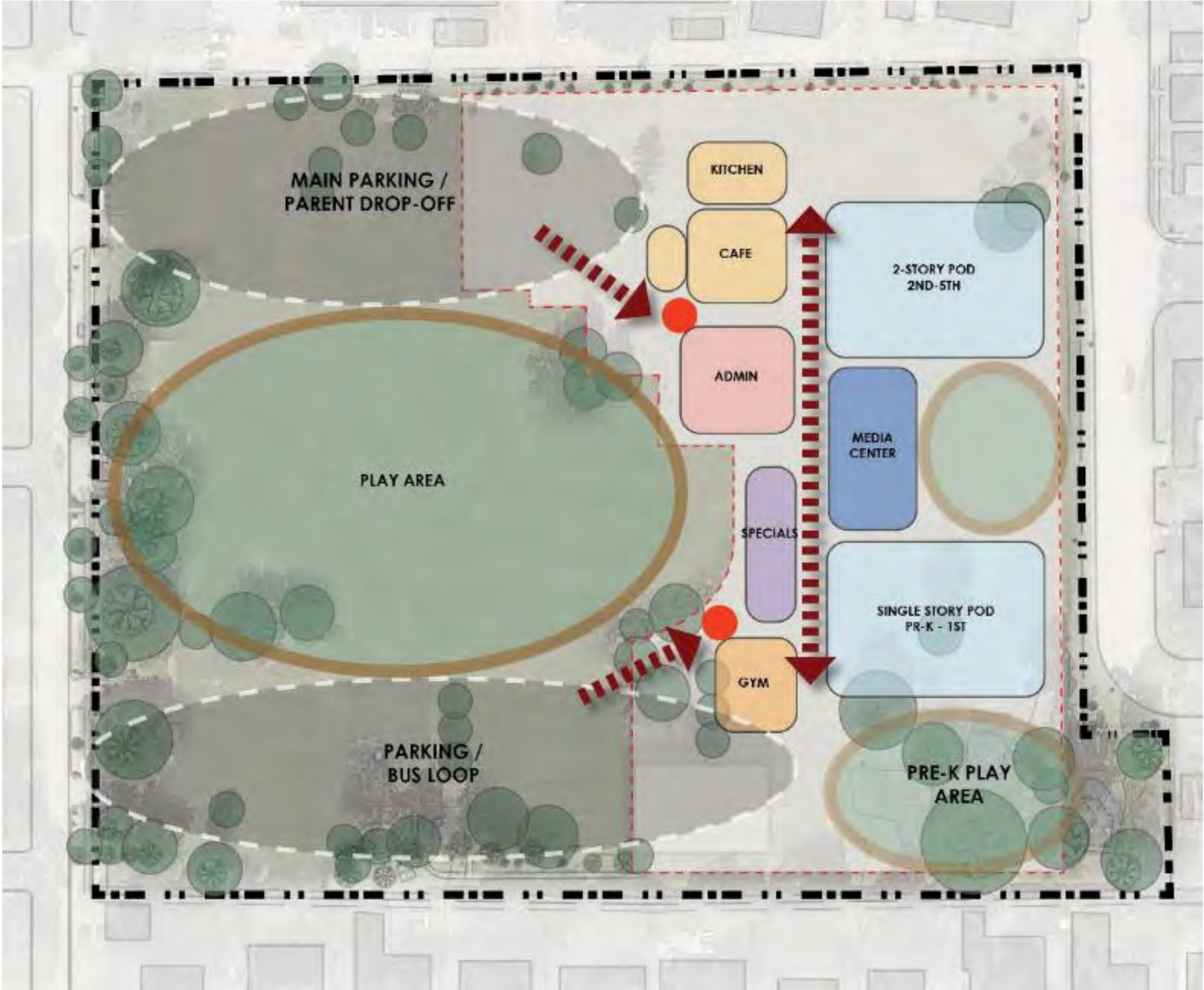


SITE CONCEPT 1: overall site plan

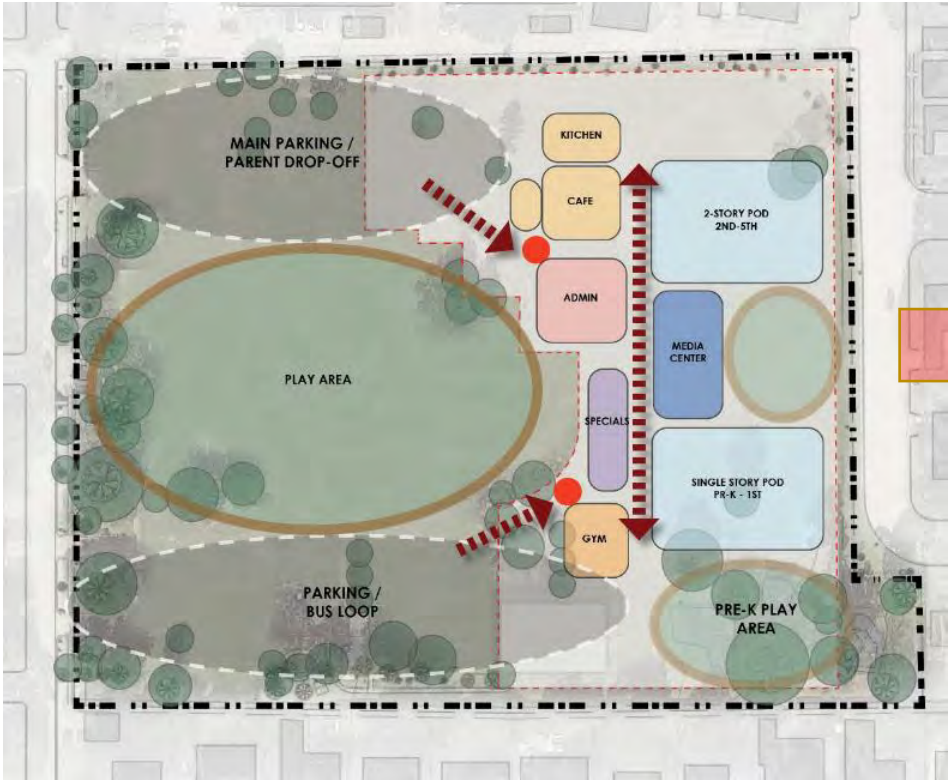


SITE CONCEPT 4 FROM PAT 2

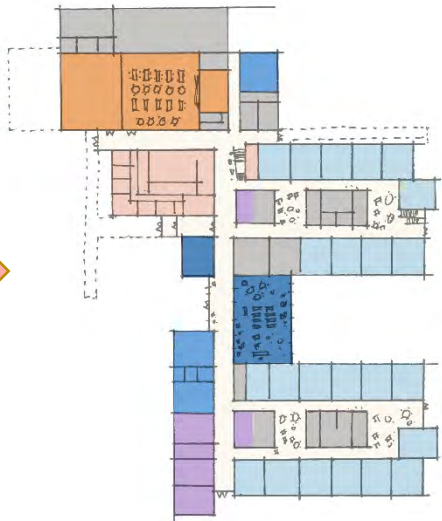
4



SITE CONCEPT 4 development



Conceptual Diagram

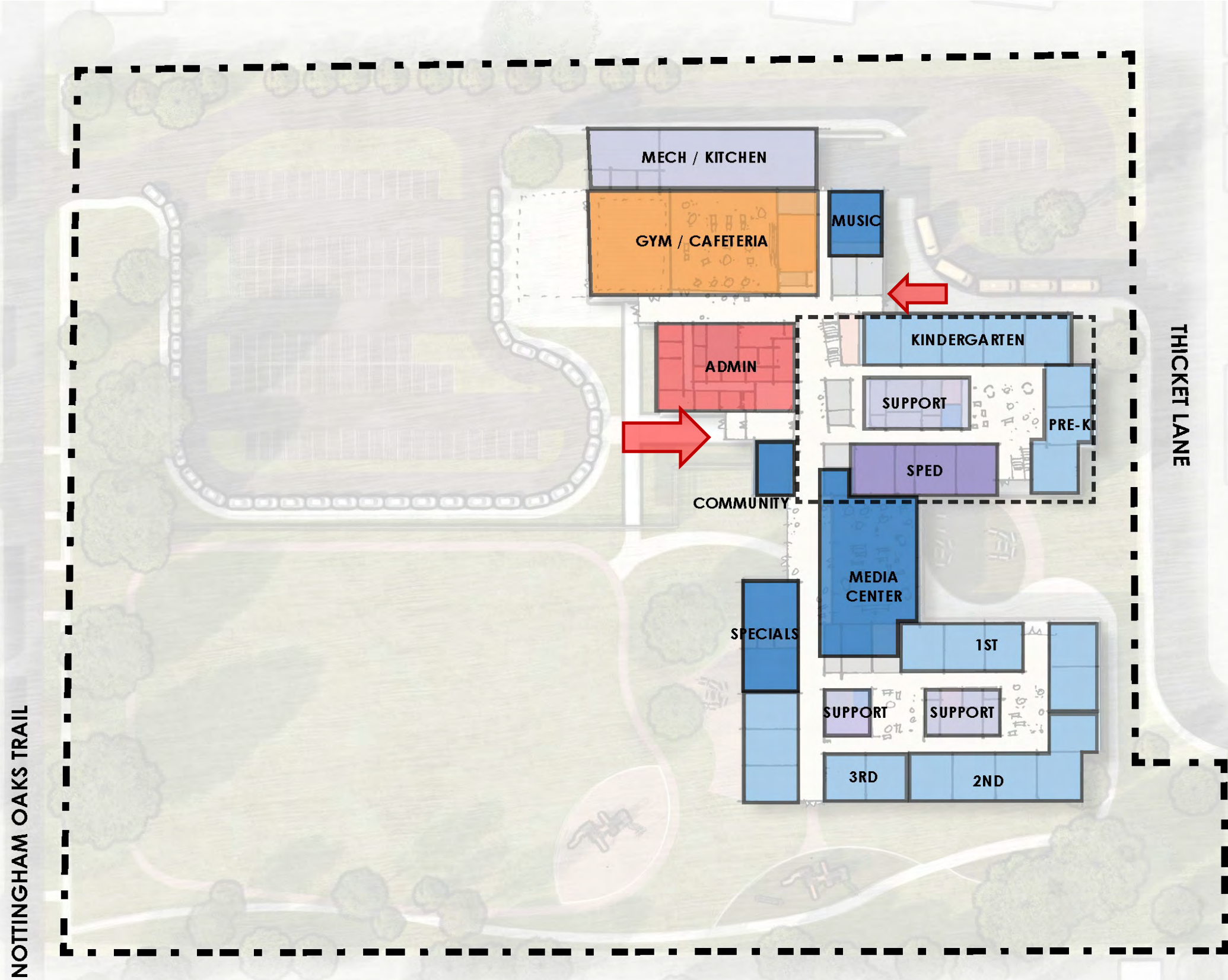


Initial Plan Layout

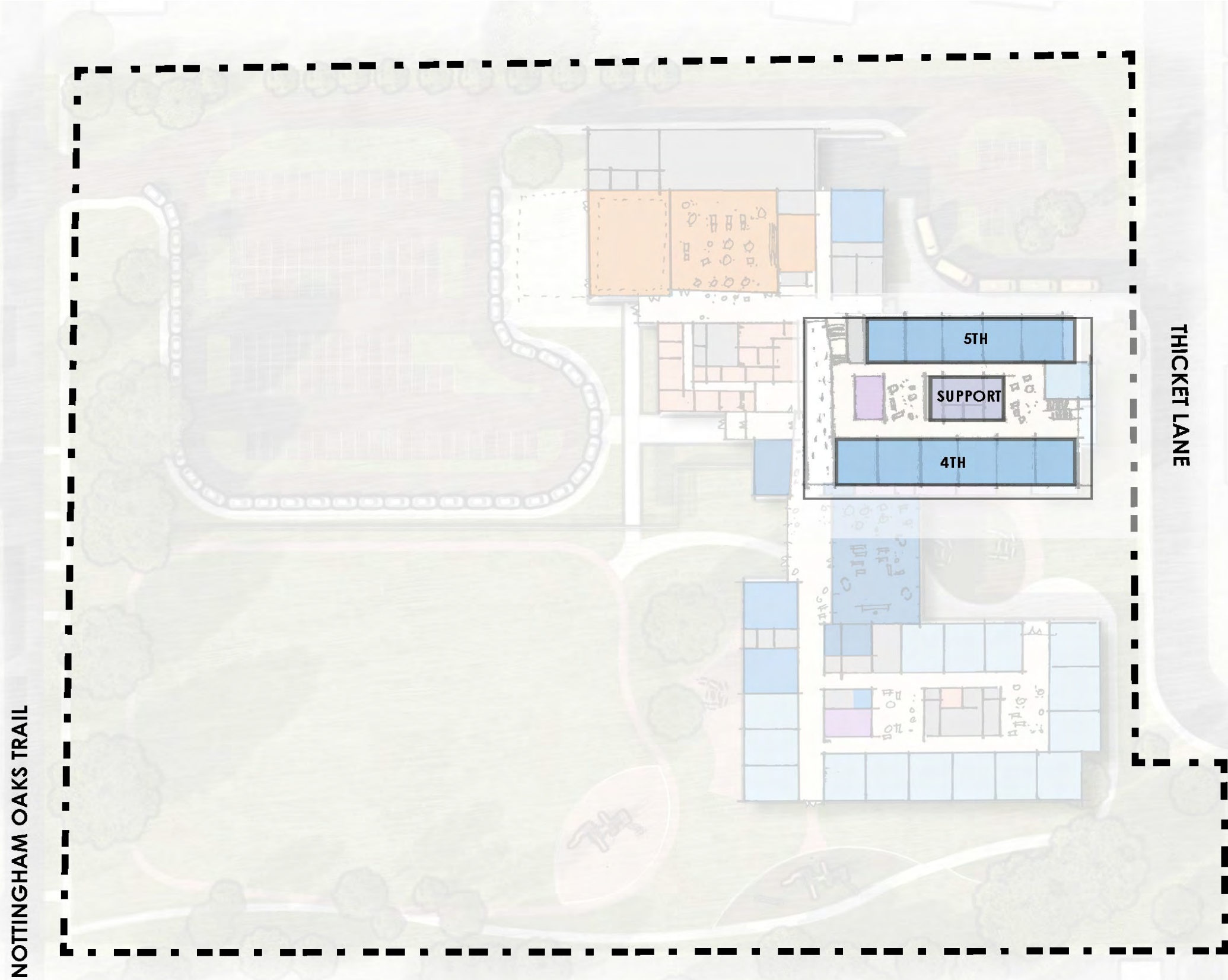


Floor Plan Refinement

SITE CONCEPT 4: program blocks FIRST FLOOR



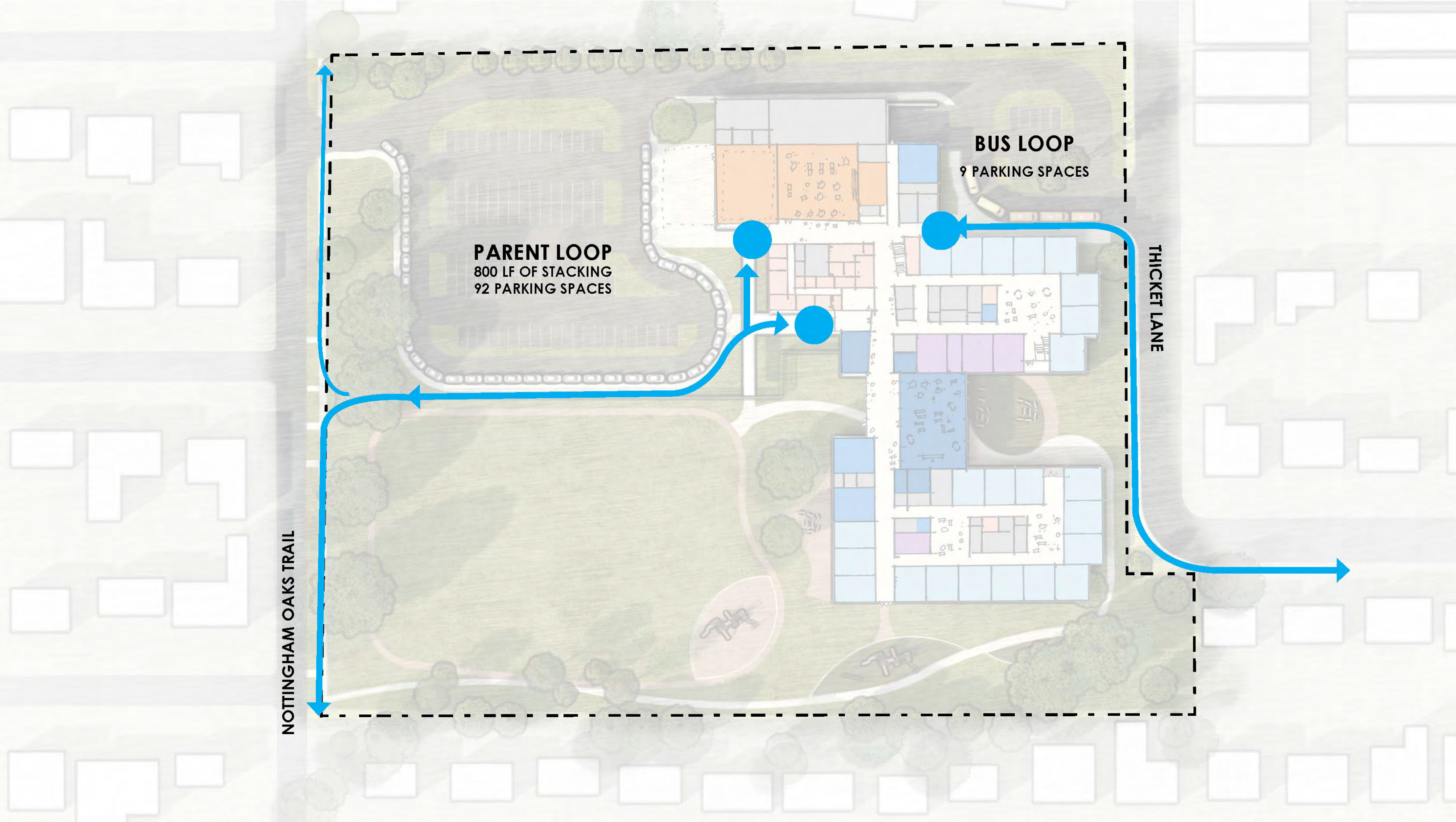
SITE CONCEPT 4: program blocks SECOND FLOOR



SITE CONCEPT 4: floor plan and site plan



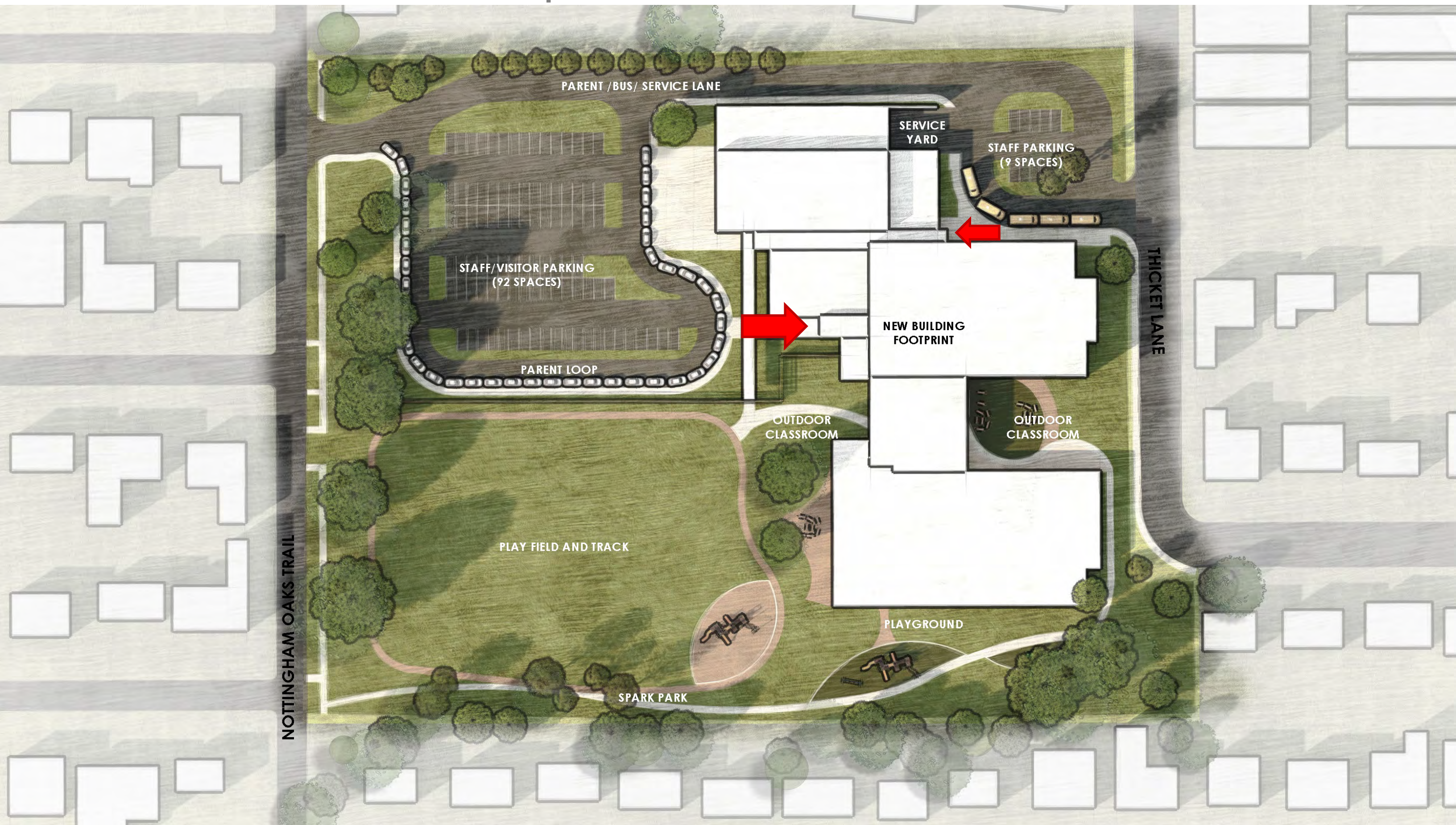
SITE CONCEPT 4: pedestrian circulation



SITE CONCEPT 4: outdoor space



SITE CONCEPT 4: overall site plan



SMALL GROUP DISCUSSIONS

SITE/ LAYOUT REVIEW AND DISCUSSION

BREAKOUT GROUPS (remain in zoom)

- Group 1 – Jorge/Juan
- Group 2 – Phillip / Melissa
- Group 3 – Daniel / Brandon

Breakout Groups Discussion 30 minutes

Regroup, Discuss and Vote 15 minutes

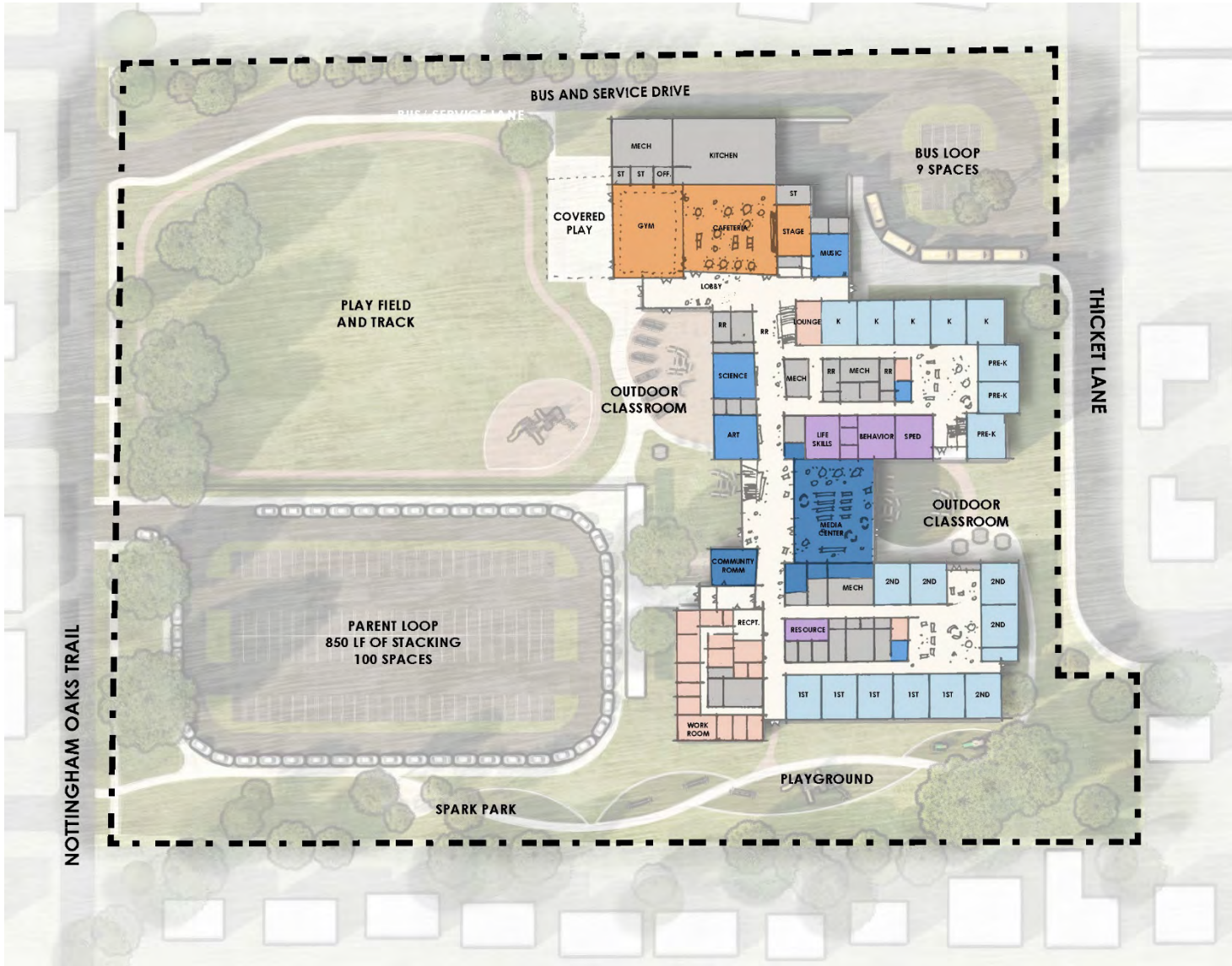


Option 1



Option 4

VOTE ON PREFERRED OPTION



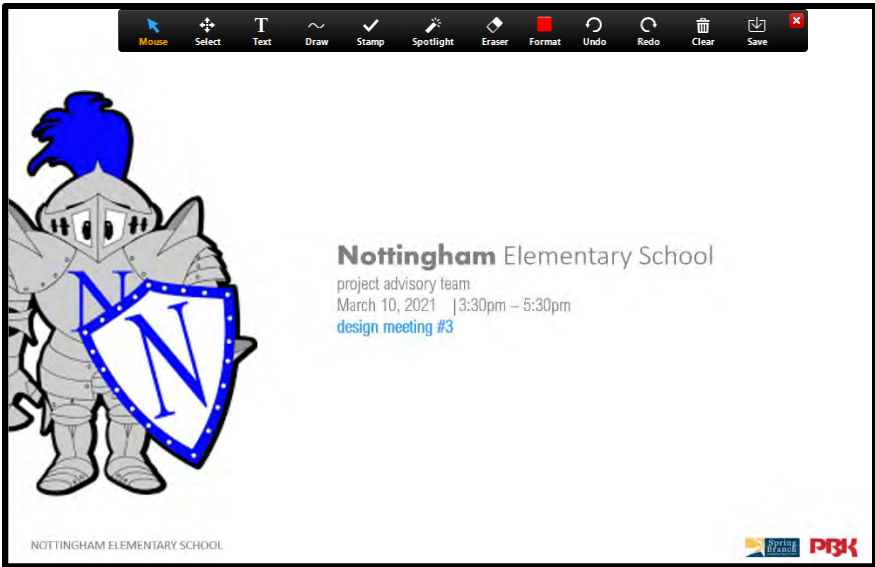
Option 1



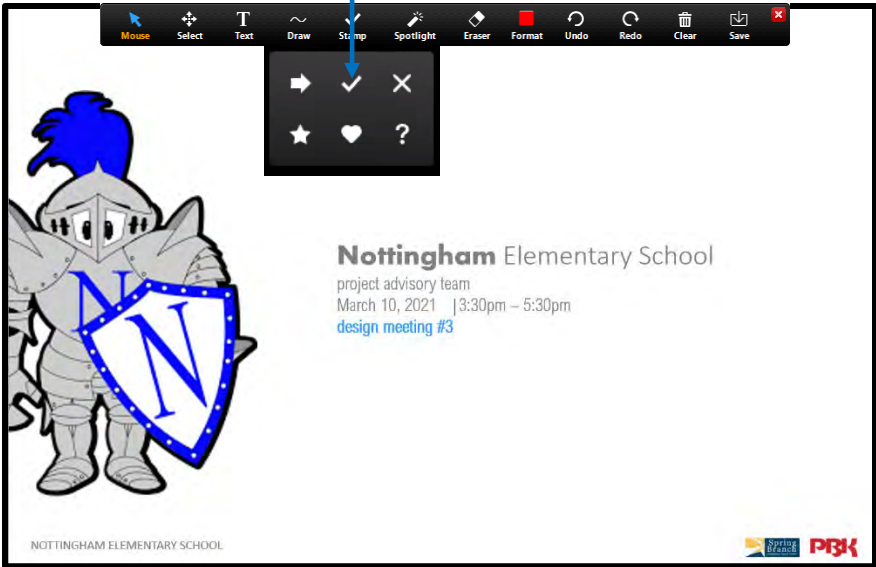
Option 4

Spirit Images

Step 1/ Move cursor to the top of the screen to use tool bar



Step 2/ Move cursor to the Stamp section to use Stamp Tool



Step 3/ Test Stamp Tool on screen
Example: What is your favorite season? Use ✓ and ✗



Spring



Summer



Fall



Winter

Exterior Character (3 ✓ and 3 ✗ per person)

Spirit Images 1



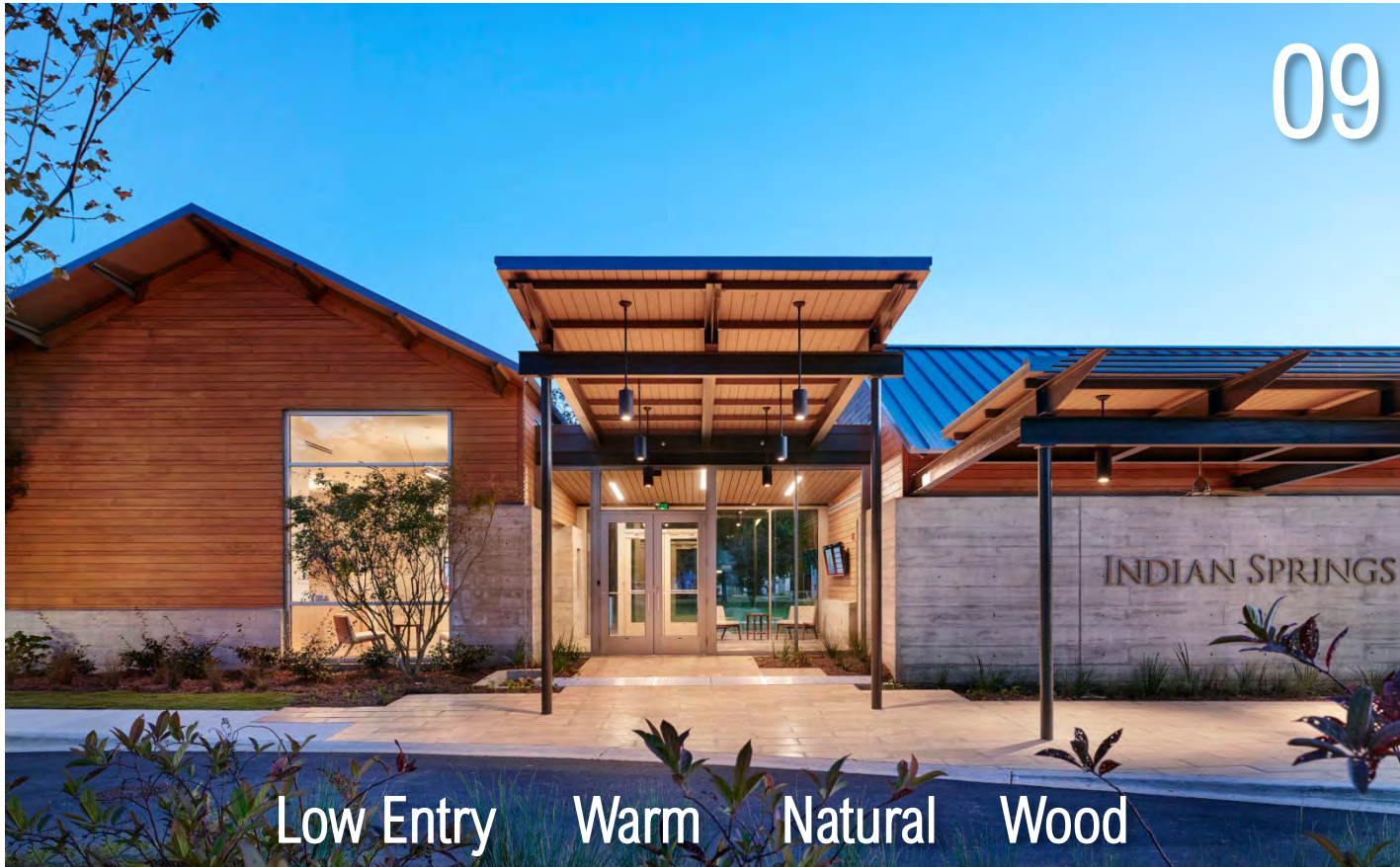
Exterior Character (3 ✓ and 3 ✗ per person)

Spirit Images 2



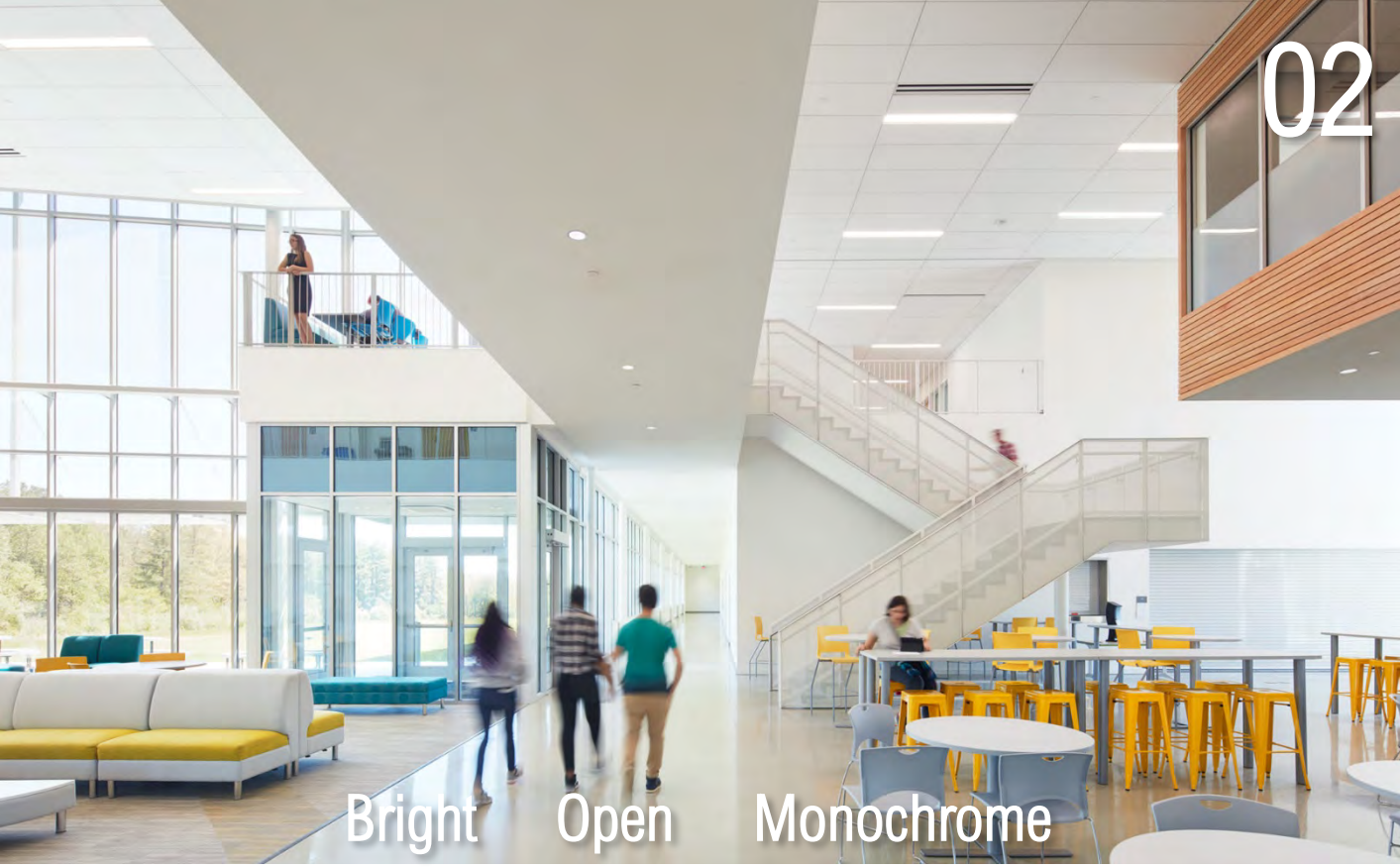
Exterior Character (3 ✓ and 3 ✗ per person)

Spirit Images 3



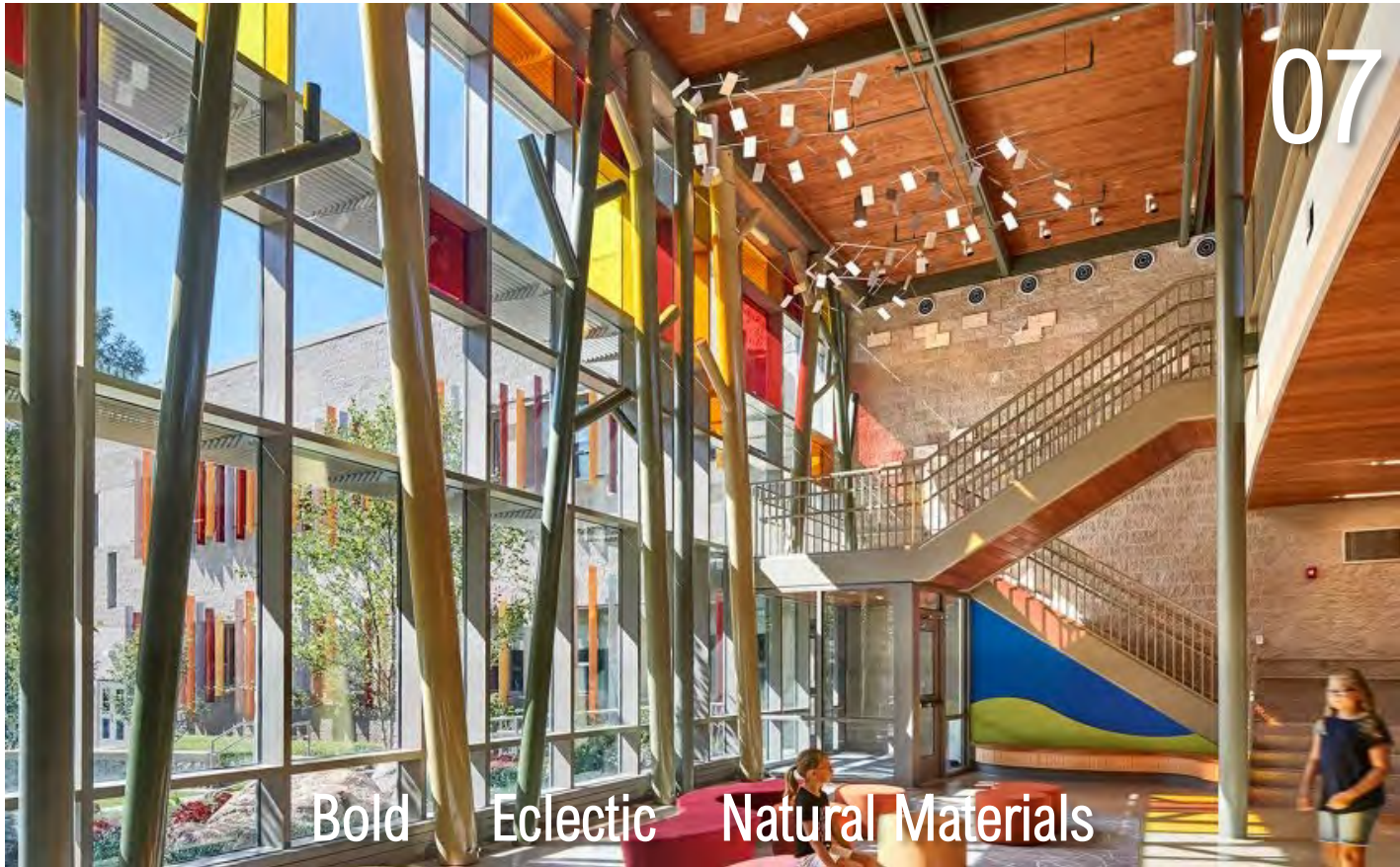
Interior Character (3 ✓ and 3 ✗ per person)

Spirit Images 1



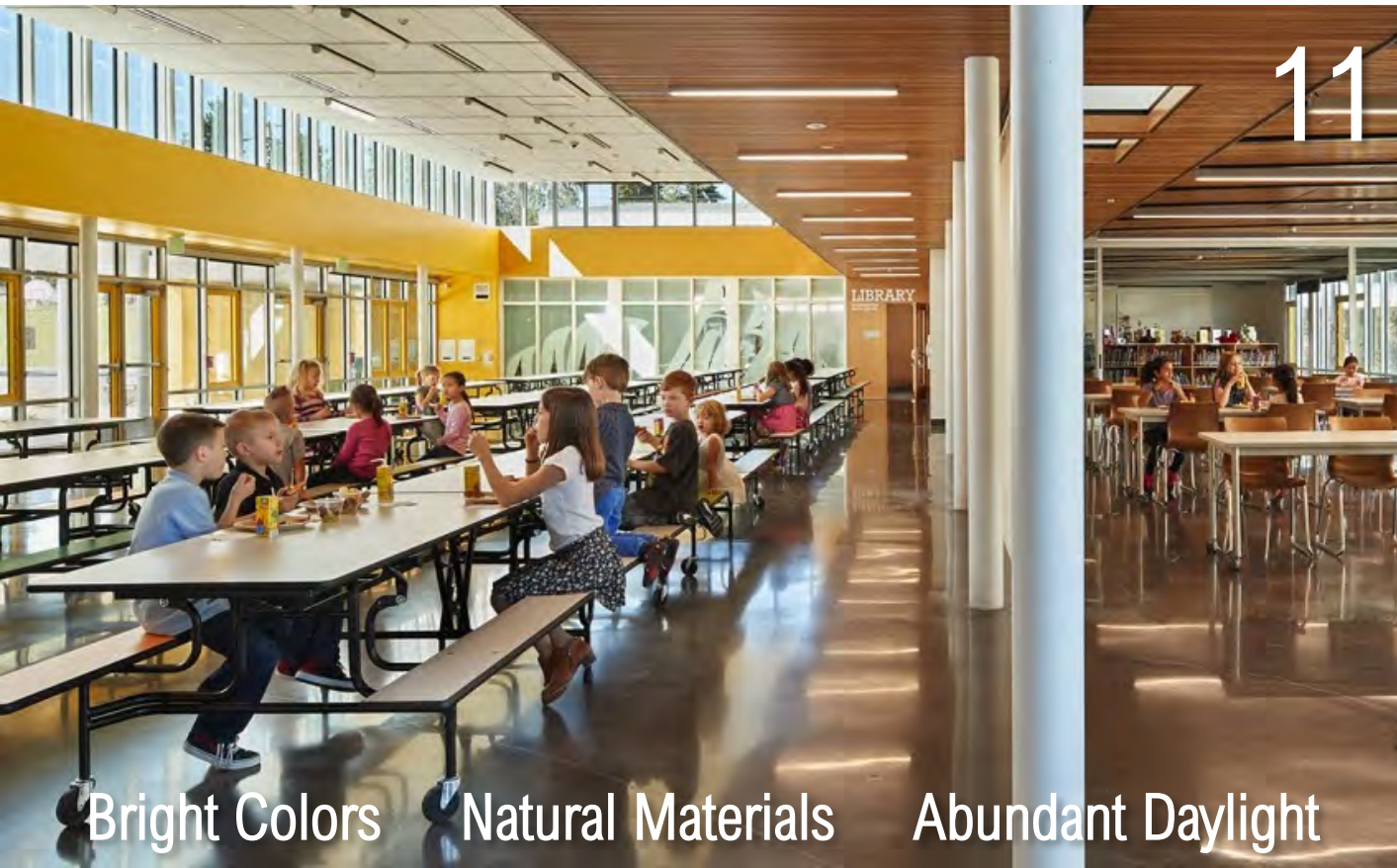
Interior Character (3 ✓ and 3 ✗ per person)

Spirit Images 2



Interior Character (3 ✓ and 3 ✗ per person)

Spirit Images 3



COMING UP ON PAT #4...

march 30, 2021 3:30 PM – 5:30 PM

Design Exploration

Refined Floor Plans

Developed Site Plan

Conceptual Building Design / Materials

PAT # 4



PAT # 5



NEXT STEPS

Closing Remarks

ARE WE HEADING IN THE RIGHT DIRECTION FOR THE NEW NOTTINGHAM DESIGN AFTER PAT #3?

Next PAT meeting

March 30, 2021 3:30 PM – 5:30 PM

Design Exploration

Refined Floor Plans

Developed Site Plan

Conceptual Building Design / Materials



Thank you!

Nottingham Elementary School