



Nottingham Elementary School

project advisory team

january 27, 2021 | 3:30pm – 5:30pm

design meeting #1

PAT #1 Meeting AGENDA

5 min	Project Introduction. WHY ARE WE HERE?
5 min	Team Introductions
10 min	Process / PAT Charge
10 min	Project Overview & Schedule
35 min	Fact Finding, Guiding Principles and Goals (VISIONING SESSION #1)
10 min	Program Overview
10 min	Site Analysis
20 min	Site Diagramming (VISIONING SESSION #2)
5 min	Next Steps

WHY ARE WE HERE?

2017 BOND: 600 STUDENT REPLACEMENT

The program has increased to:

**REPLACEMENT NOTTINGHAM ES
min 750 STUDENT CAPACITY
+/- 103,000 GSF**



MEET THE TEAM



Becky Hagan
Nottingham Elementary School Principal

Travis Stanford
Associate Superintendent for Operations

Max Buja
Director of Planning and Construction

Noel Moreno
Project Manager

Kris Drosche
Project Manager



Brandon Ross
Partner

Jorge Tiscareño
Design Principal

Melissa Turnbaugh
Principal

Daniel De La Garza
Principal / Senior Designer

Philip Stewart
Senior Project Manager

Juan Valdez
Project Manager

SUPERINTENDENT PROJECT ADVISORY TEAM (PAT) CHARGE

OVERVIEW

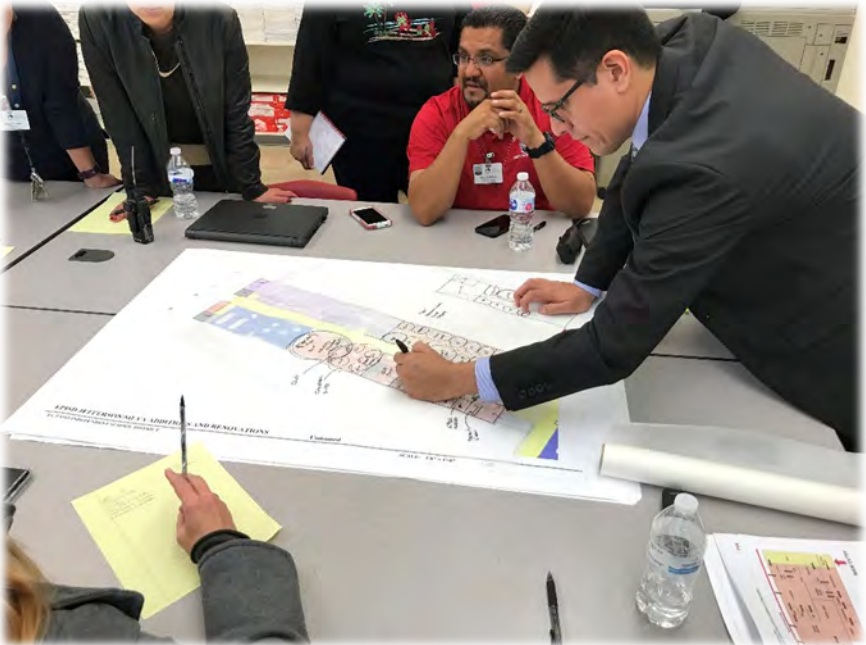
A Project Advisory Team (PAT) will be chartered for each new school construction or major renovation project in the 2017 Bond Program. Each PAT is an advisory ad hoc committee, representing the various stakeholders of a school community. As such, the PAT is chartered for a defined purpose and time and holds no statutory authority.

The goal of the PAT is to ensure that parents, staff and community members have the opportunity to take part in the planning and design of new schools.

The PAT members will serve as communicators to and from the community during the schematic design and development phases of the project and participate in discussions that will lead to recommendations. The PAT concludes its work once construction begins.



THOUGHTFUL EXPLORATION



HANDS ON ENGAGEMENT



INFORMED AND COLLABORATIVE DECISION MAKING

SUPERINTENDENT PROJECT ADVISORY TEAM (PAT) CHARGE

CHARGE

Each Project Advisory Team's (PAT) members are charged with providing input into planning and design development for their school's new construction or major renovation project in the 2017 Bond Program. The PAT will meet as needed throughout the project, from initial planning, through design to the start of construction. Meeting agendas and minutes will be posted on the school's bond project website.

At the start of the project, representatives of the project architectural firm and the SBISD Project Manager will inform the PAT of the general project scope (new construction or renovation) and the proposed schedule of the work.

The PAT will work collaboratively and cooperatively with the architect and SBISD Project Manager to conceptualize, develop and refine the project's goals and design. The PAT will work with the architect and the SBISD Planning & Construction staff to ensure meeting the project's scope and schedule as defined by the 2017 Bond Program. The PAT will reach proposed recommendations through consensus.

Any concerns identified by the PAT members should immediately be brought to the attention of the SBISD Project Manager.



THOUGHTFUL EXPLORATION



HANDS ON ENGAGEMENT



INFORMED AND COLLABORATIVE DECISION MAKING

SUPERINTENDENT PROJECT ADVISORY TEAM (PAT) CHARGE

CHARGE (continued)

The PAT will advise on recommendations regarding the interior and exterior appearance of the campus. These recommendations will be presented by the project’s architects to the Superintendent of Schools and based on the approval from the Superintendent will then be presented to the Board of Trustees for their approval. Recommendations are subject to review and change by district administration and/or the Board of Trustees. All recommendations must be in alignment with the District’s Educational Specifications and Design and Construction Standards.

The Board of Trustees may act upon the recommendations developed with PAT input by approving, amending, altering or not approving all or any part of the recommendations.

Areas of focus from which the PAT should refrain include recommendations regarding school programs, policies and procedures, boundaries of district facilities, instructional arrangements and/or educational pedagogy decided upon and/or subject to District, State and Federal laws.

Project Advisory Teams are essential participants in the planning and design process. Team members are asked to agree to participate in various meetings throughout the process.



THOUGHTFUL EXPLORATION

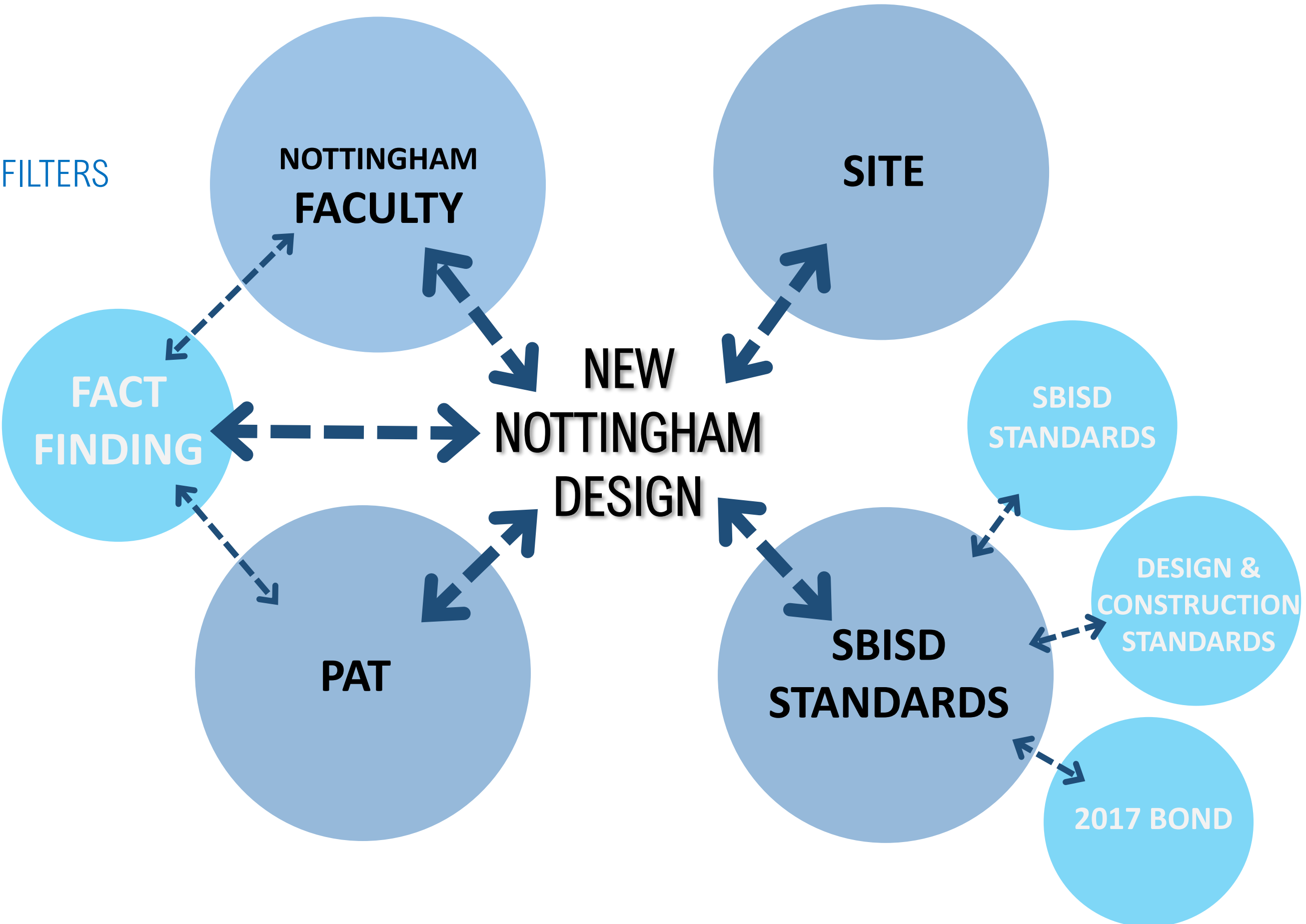


HANDS ON ENGAGEMENT



INFORMED AND COLLABORATIVE DECISION MAKING

DESIGN LENS FILTERS



PAT TEAM
24 members

Campus Principal
Becky Hagan

Assistant Principal
Sherrie Folger

Parents
Tara Cunningham-Baker
Kristin Anderson

Campus Staff
Kelli Atkinson
Sabrina Lay

PTA President
Linda Dang

**HOA
Representatives**
Ysella Kaseman
Peter DallePezze
Cassie McClung

CIT Members

Terry White
Watson Potter
Wayne Watson
Courie Anderson
Sarah Davidson
Tonya Spell
Megan Kessler
Claire Mercaldo
Payton Kingsley
Sarah Dale
Sabrina Lay
Melanie Marshall
Thomas Debesse
Jason Warren

OVERALL PROJECT SCOPE

REPLACEMENT NOTTINGHAM ES
min 750 STUDENT CAPACITY
+/- 105,000 GSF

REPLACE CAMPUS ON EXISTING CAMPUS
WHILE EXISTING CAMPUS IS OPERATIONAL

OPENING OF FALL 2023



OVERALL PROJECT SCHEDULE

Design														Construction																				
2020			2021								2022								2023															
O	N	D	J	F	MR	AP	MY	JN	JY	AU	S	O	N	D	J	F	MR	AP	MY	JN	JY	AU	S	O	N	D	J	F	MR	AP	MY	JN	JY	AU

Pre Design

- Fact Finding
- Surveys

Schematic Design

- PAT #1
- PAT #2
- PAT #3
- PAT #4

Design Development

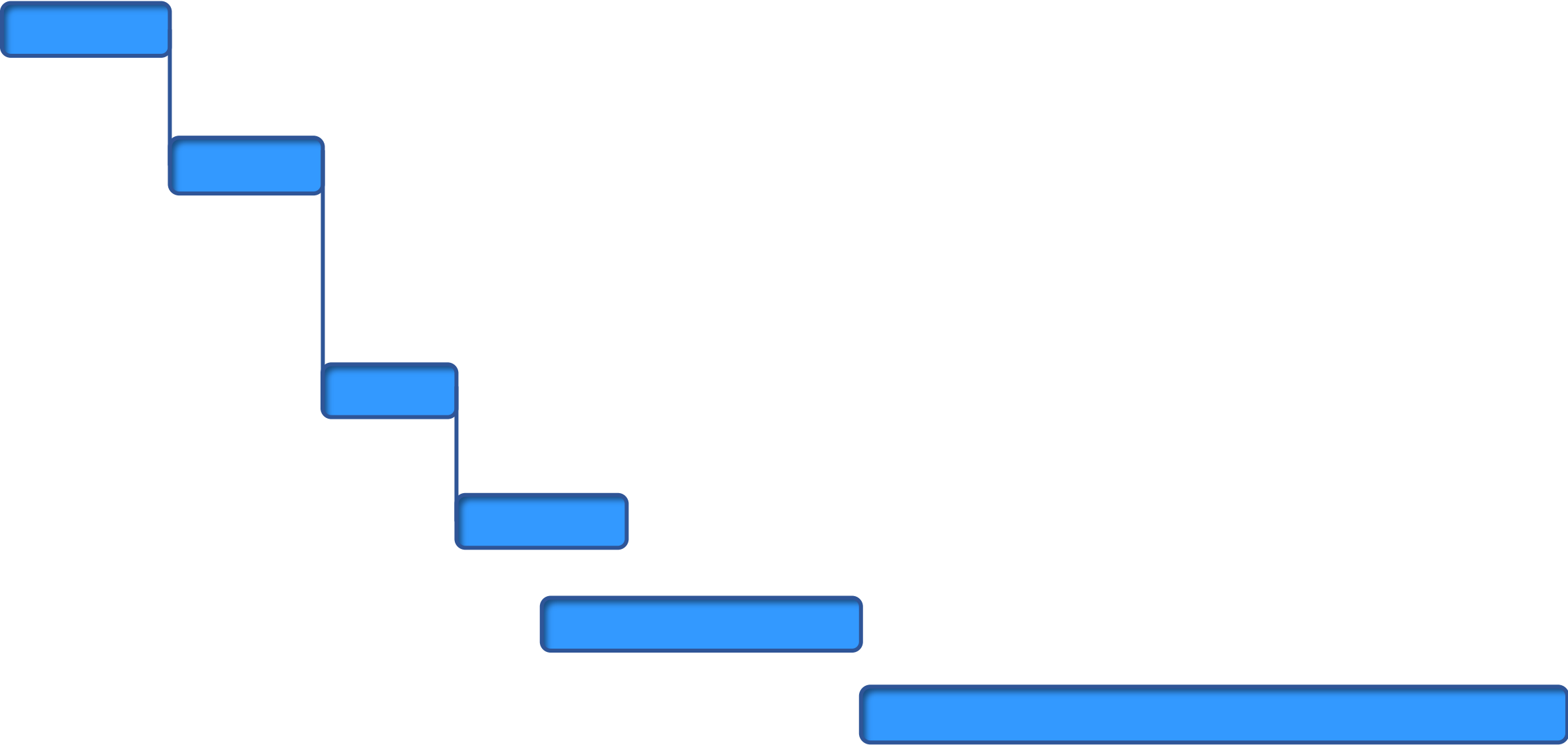
- PAT #5
- PAT #6

Construction Documents

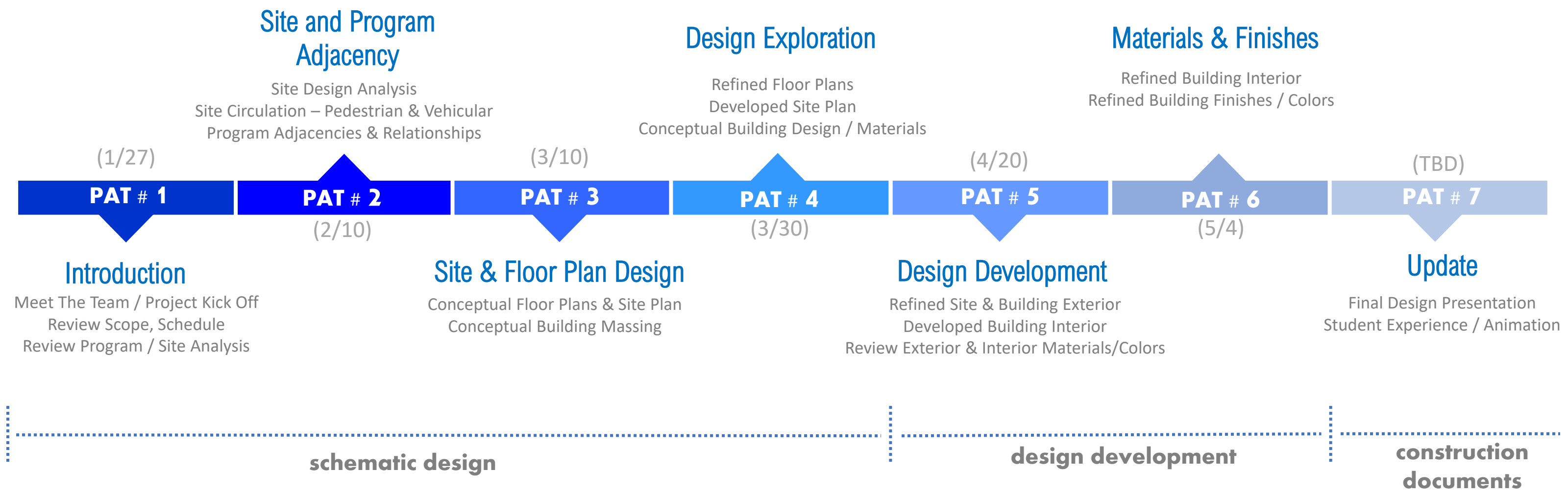
- PAT #7

Permitting

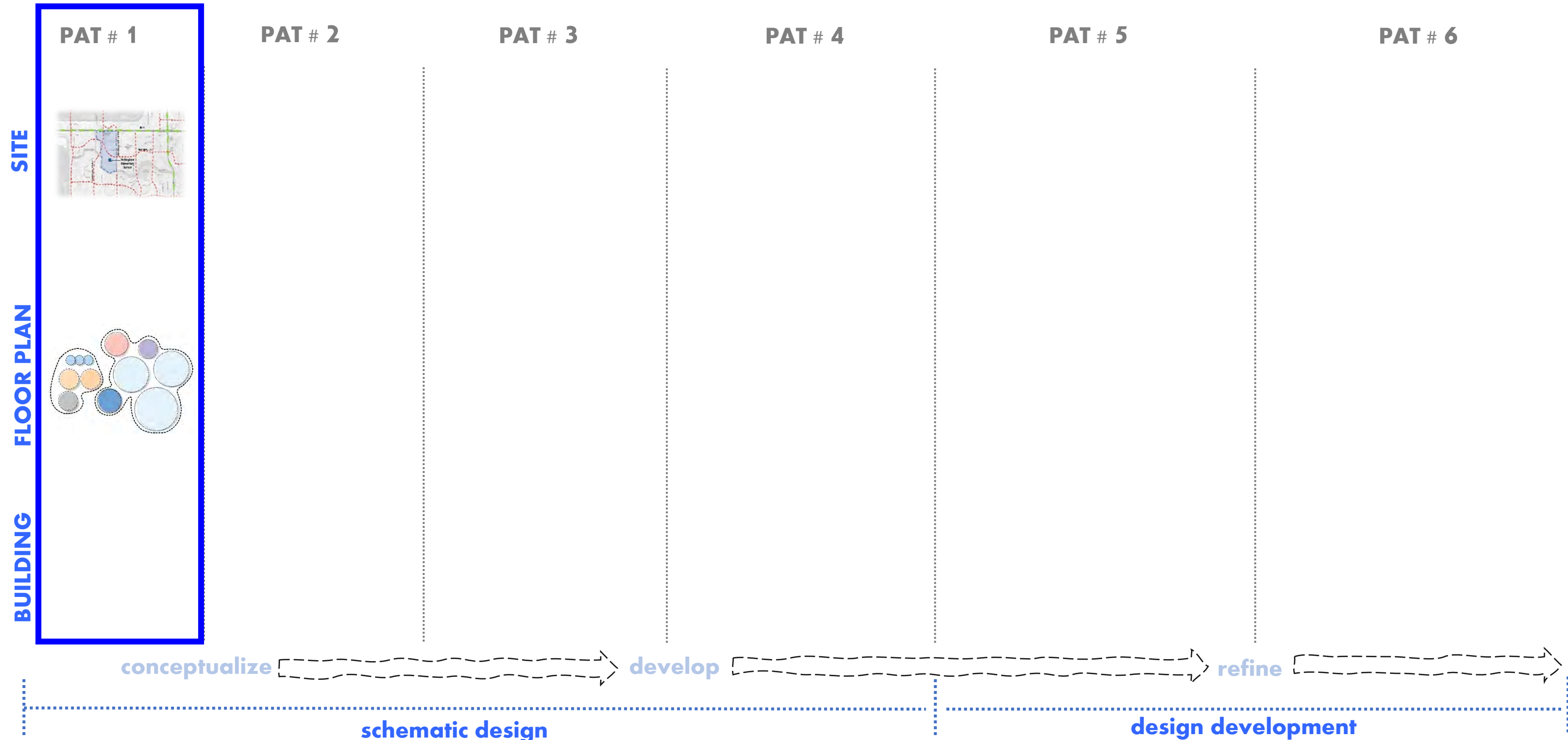
Construction



PAT SCHEDULE DETAIL (meetings 3:30 PM - 5:30 PM)



PAT BUILDING DESIGN PROCESS



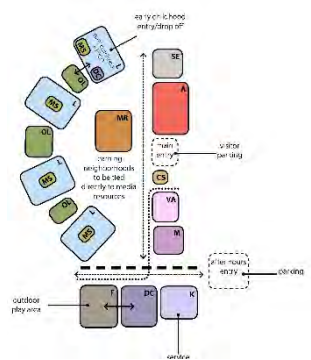
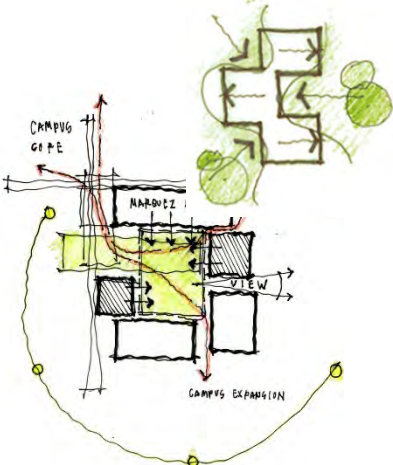
PAT BUILDING DESIGN PROCESS

SITE
FLOOR PLAN
BUILDING

PAT # 1



PAT # 2



PAT # 3

PAT # 4

PAT # 5

PAT # 6

conceptualize

develop

refine

schematic design

design development

SITE

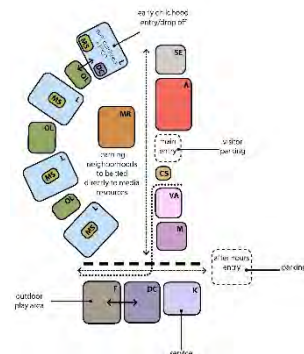
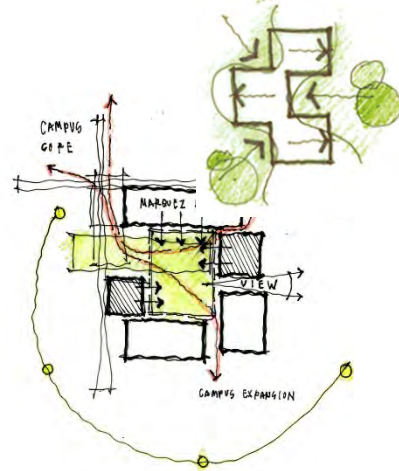
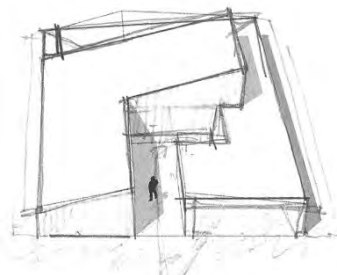
FLOOR PLAN

BUILDING

PAT # 1



PAT # 2

**PAT # 3**

PAT # 4

PAT # 5

PAT # 6

conceptualize

develop

```
➤ refine
```



schematic design

design development

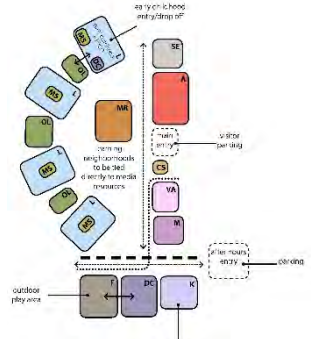
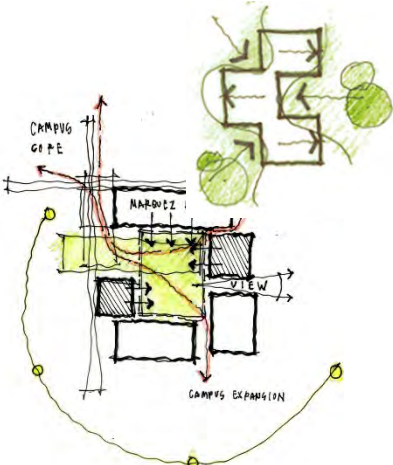
PAT BUILDING DESIGN PROCESS

SITE
FLOOR PLAN
BUILDING

PAT # 1



PAT # 2



PAT # 3



PAT # 4



PAT # 5

PAT # 6



schematic design design development

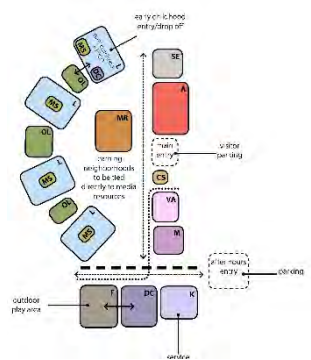
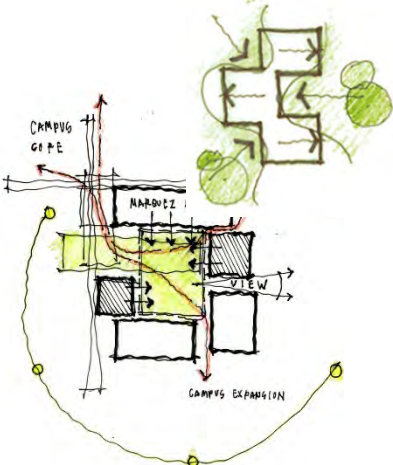
PAT BUILDING DESIGN PROCESS

SITE
FLOOR PLAN
BUILDING

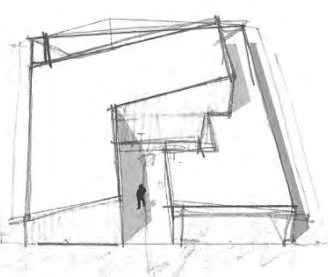
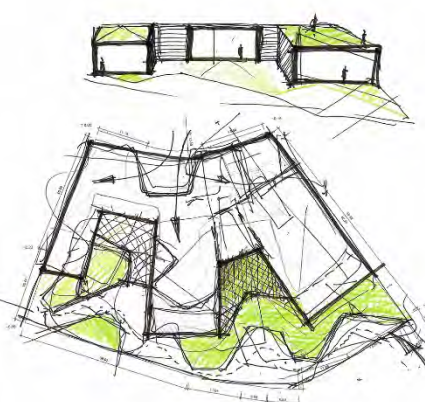
PAT # 1



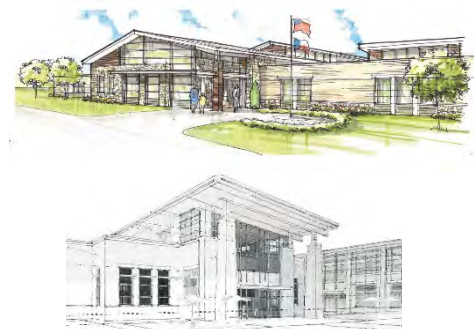
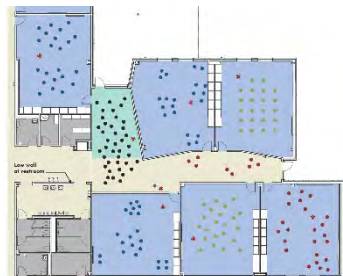
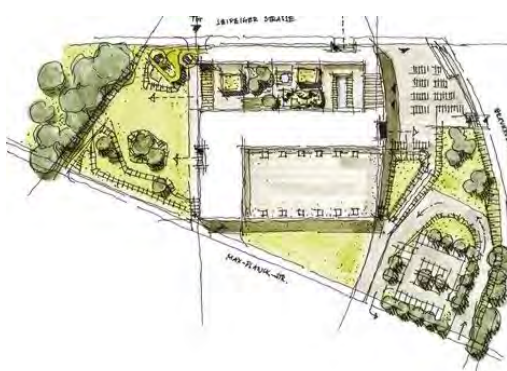
PAT # 2



PAT # 3



PAT # 4



PAT # 5



PAT # 6

conceptualize → develop → refine

schematic design

design development

PAT BUILDING DESIGN PROCESS

SITE

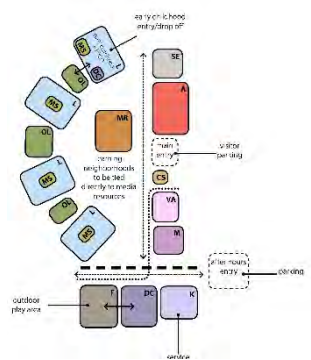
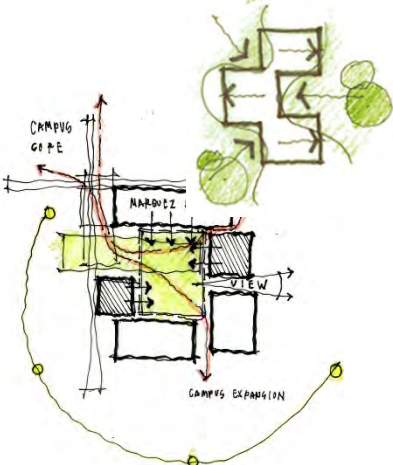
FLOOR PLAN

BUILDING

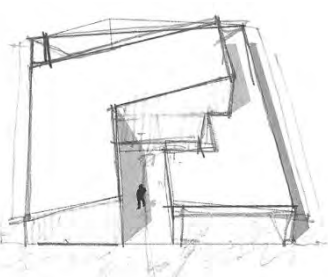
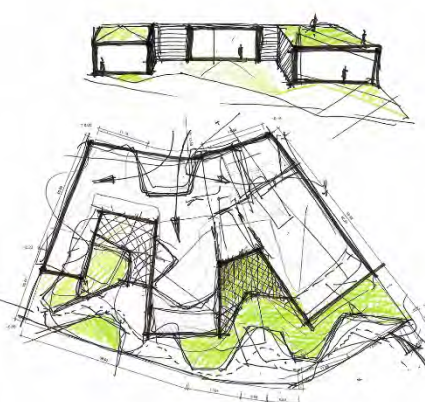
PAT # 1



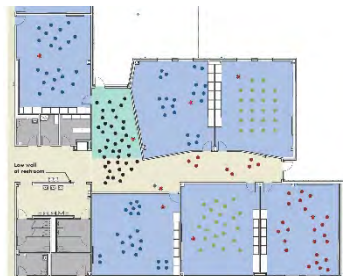
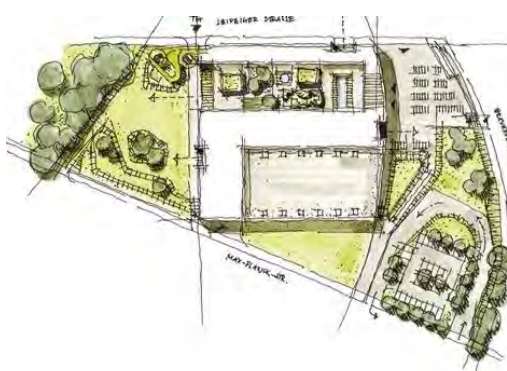
PAT # 2



PAT # 3



PAT # 4



PAT # 5



PAT # 6



conceptualize

develop

refine

schematic design

design development

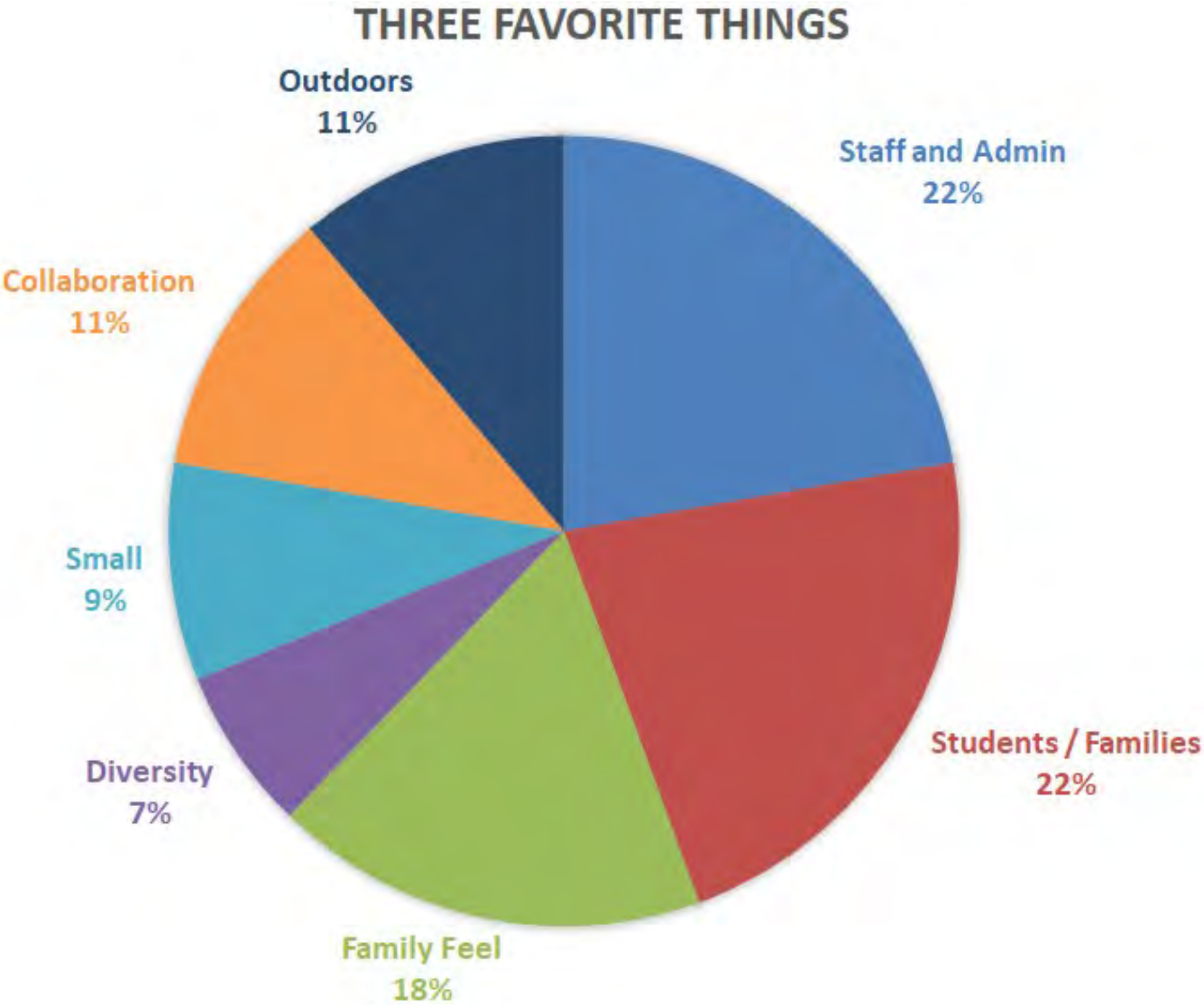
FACT FINDING

Discussion/ FACT FINDING

Staff Interviews
Questionnaires

What are your three favorite things about Nottingham Elementary School?

what was said...



FACT FINDING

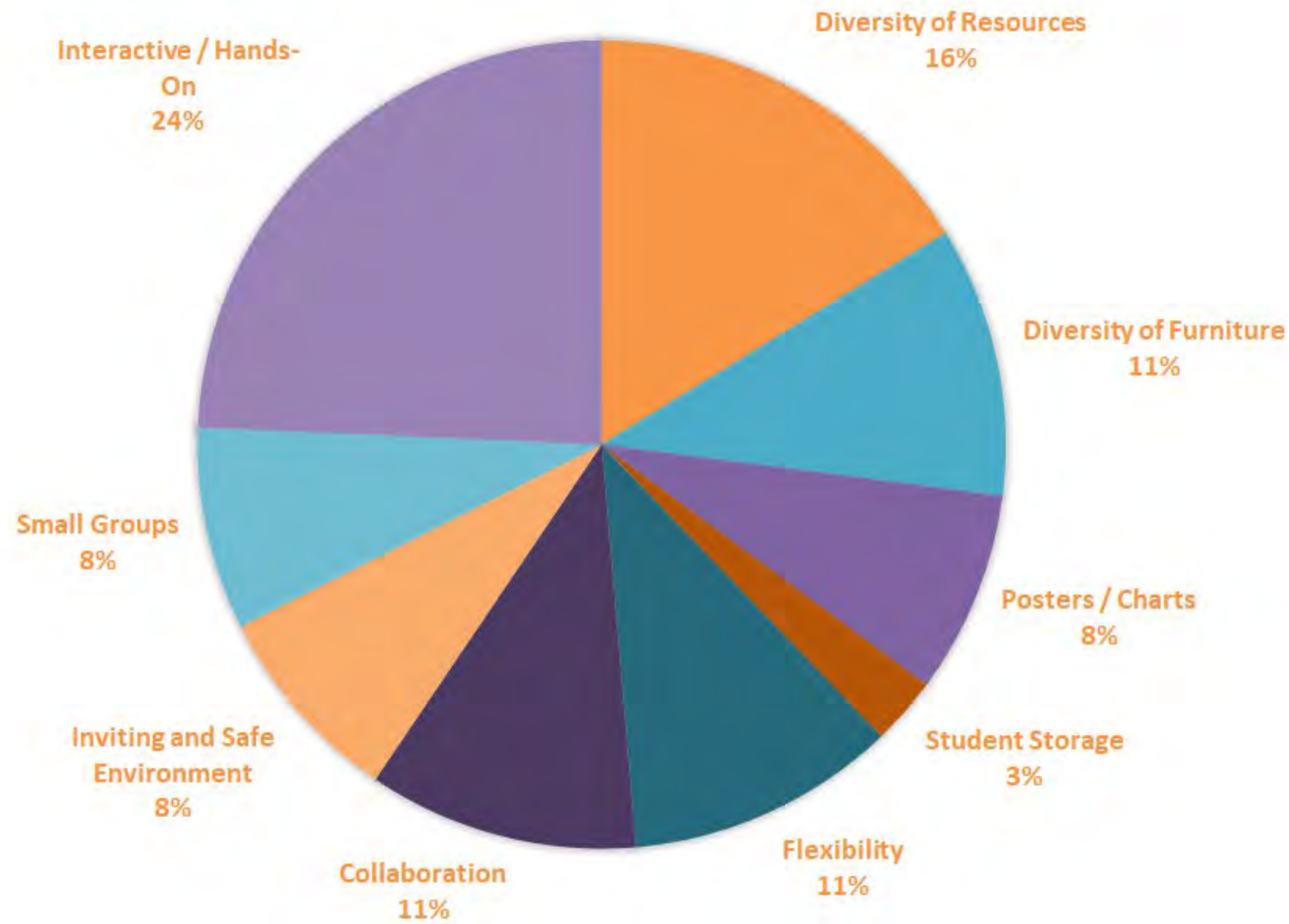
Discussion/ FACT FINDING

Staff Interviews
Questionnaires

What do you do to create opportunities
for a great / optimal learning experience?

what was said...

CREATE LEARNING OPPORTUNITIES



FACT FINDING

Discussion/ FACT FINDING

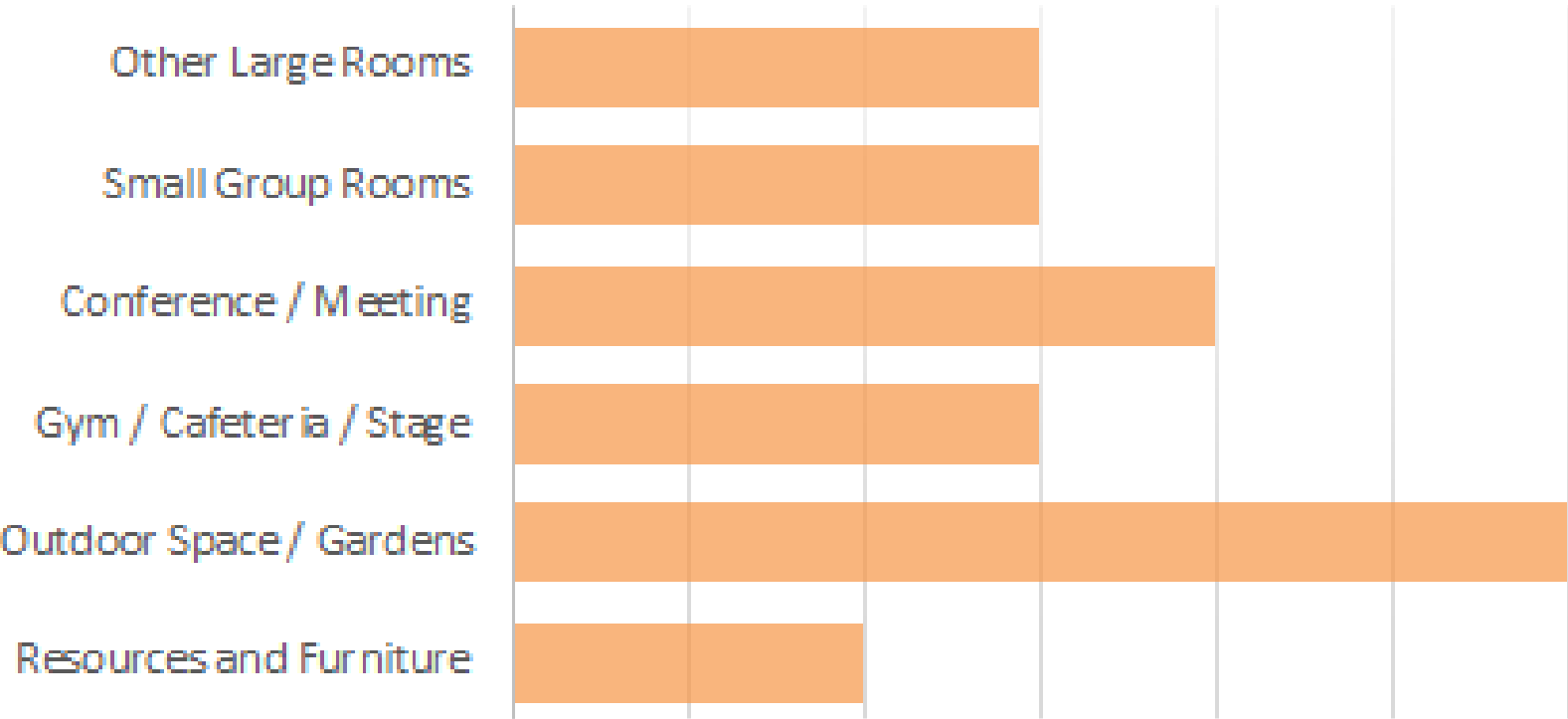
Staff Interviews
Questionnaires

[When you extend beyond the classroom]
describe the features that encourage these
experiences?

what was said...



HOW DO YOU EXTEND BEYOND THE CLASSROOM



GOALS & VISION

Visioning Session/ PAT thoughts : 20-25 minutes

Stay on zoom

Use phone or computer to go to:

www.menti.com

type in code: XXXXXXXXX

Stay on site, we will change the questions

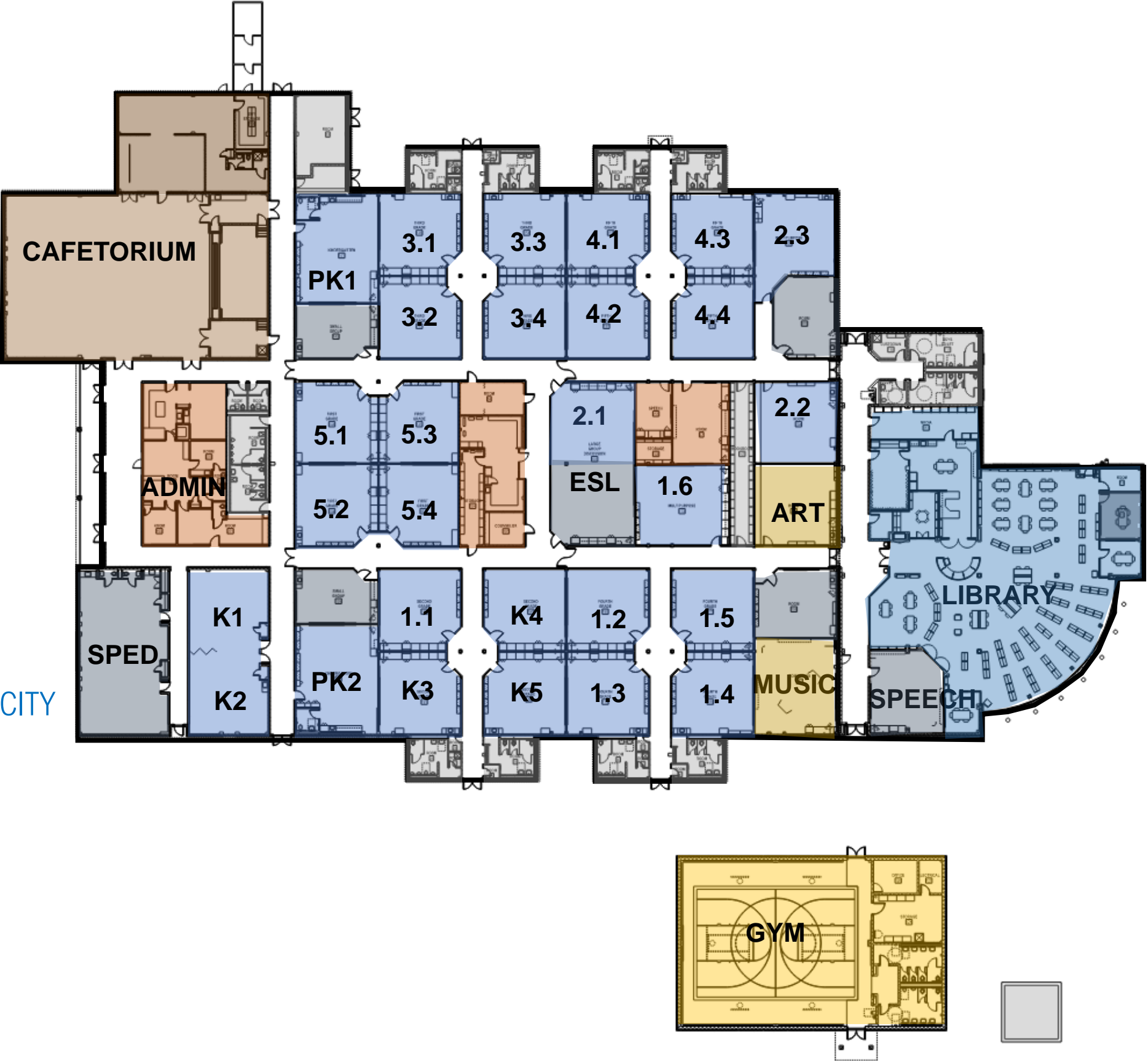
GOALS & VISION

Visioning Session/ PAT thoughts : 25-30 minutes

1. Describe what makes Nottingham Elementary so **special and unique**.
2. What is your **favorite aspect** of the existing campus you don't want to lose?
3. What is your **least favorite** aspect of the existing campus that needs to change?
4. Describe how the New NHE can support **family engagement and community activities**.
4. Name **three things** that should be included in a **NextGen learning environment**.
6. Describe **your vision** for the New Nottingham Elementary School.

PROGRAM OVERVIEW_EXISTING

GRADE	SPACES	#STUDENTS CLASS	TOTAL
PK	2	19	38
K	5	19	95
1	5	20	100
2-5	16	24	384
	28		617
SPED	2	8	16
	30 TOTAL TEACHING SPACES		633 DESIGN CAPACITY



PROGRAM OVERVIEW_NEW

GRADE | SPACES | #STUDENTS | TOTAL CLASS

PK	3	19	57
K	5	19	95
1	5	20	100
2-5	20	24	480
	33		732

SPED 3 8 24

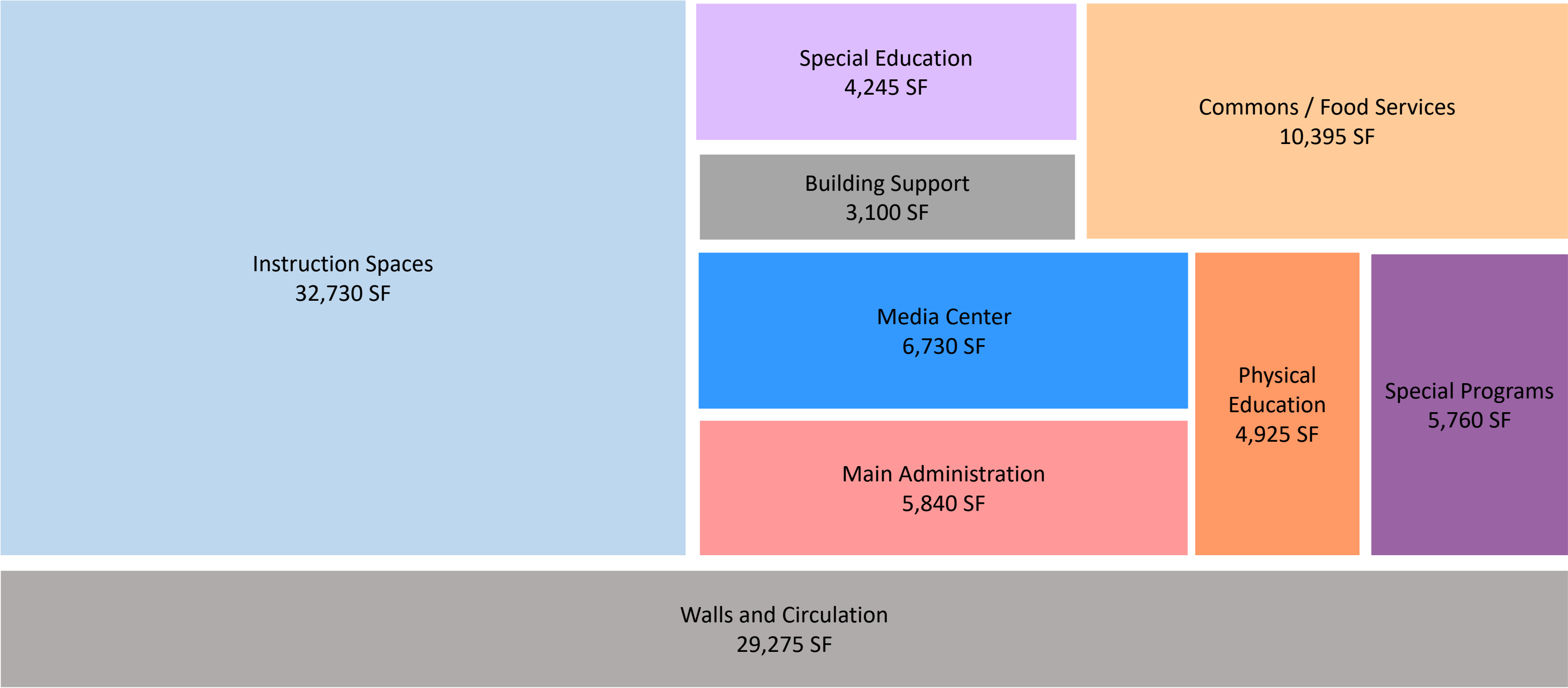
36 TOTAL TEACHING SPACES 756 DESIGN CAPACITY



PROGRAM OVERVIEW_NEW

PER 2017 EDUCATIONAL SPECIFICATIONS

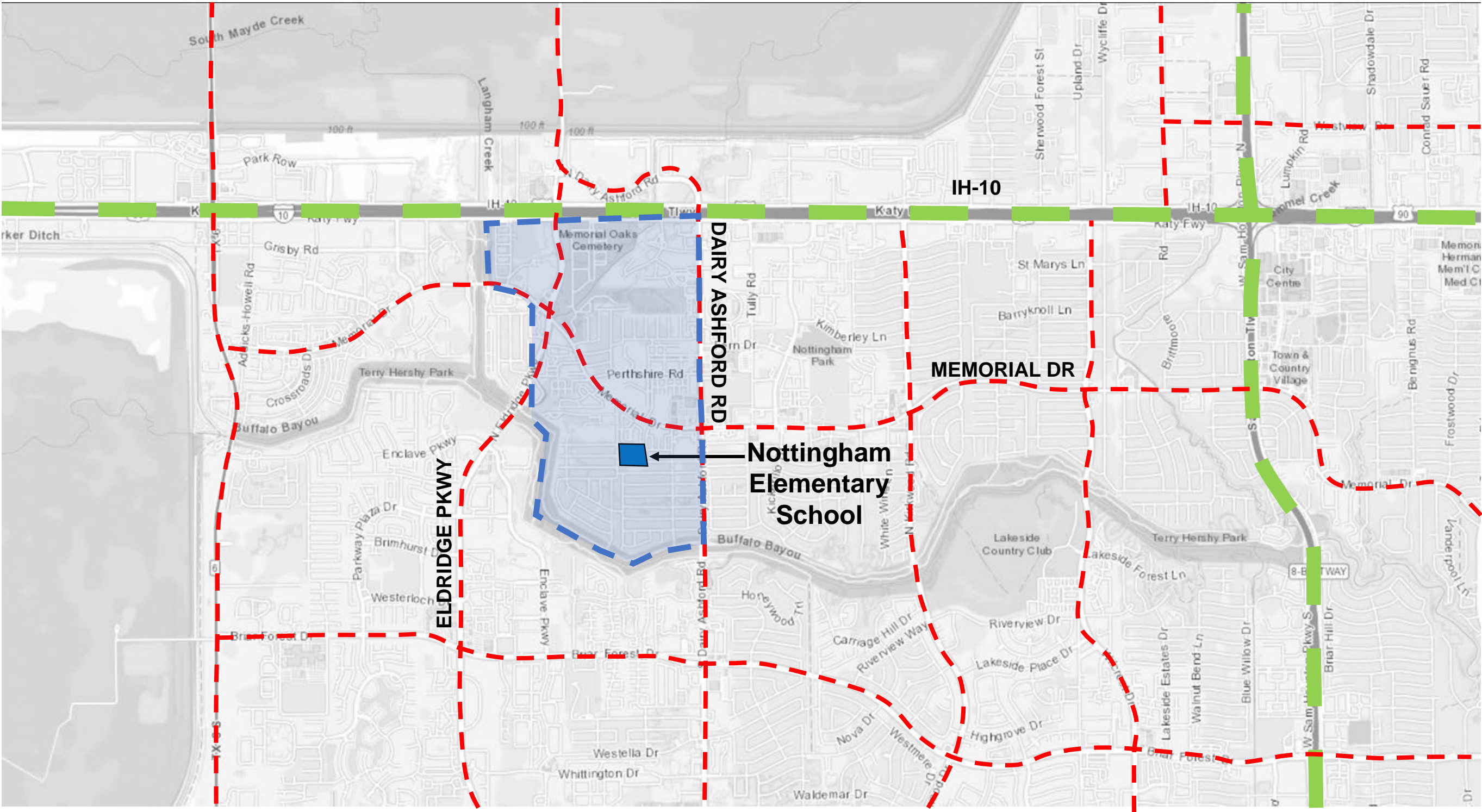
REPLACEMENT NOTTINGHAM ES
min 750 STUDENT CAPACITY
+/- 103,000 GSF



PER 2017 EDUCATIONAL SPECIFICATIONS

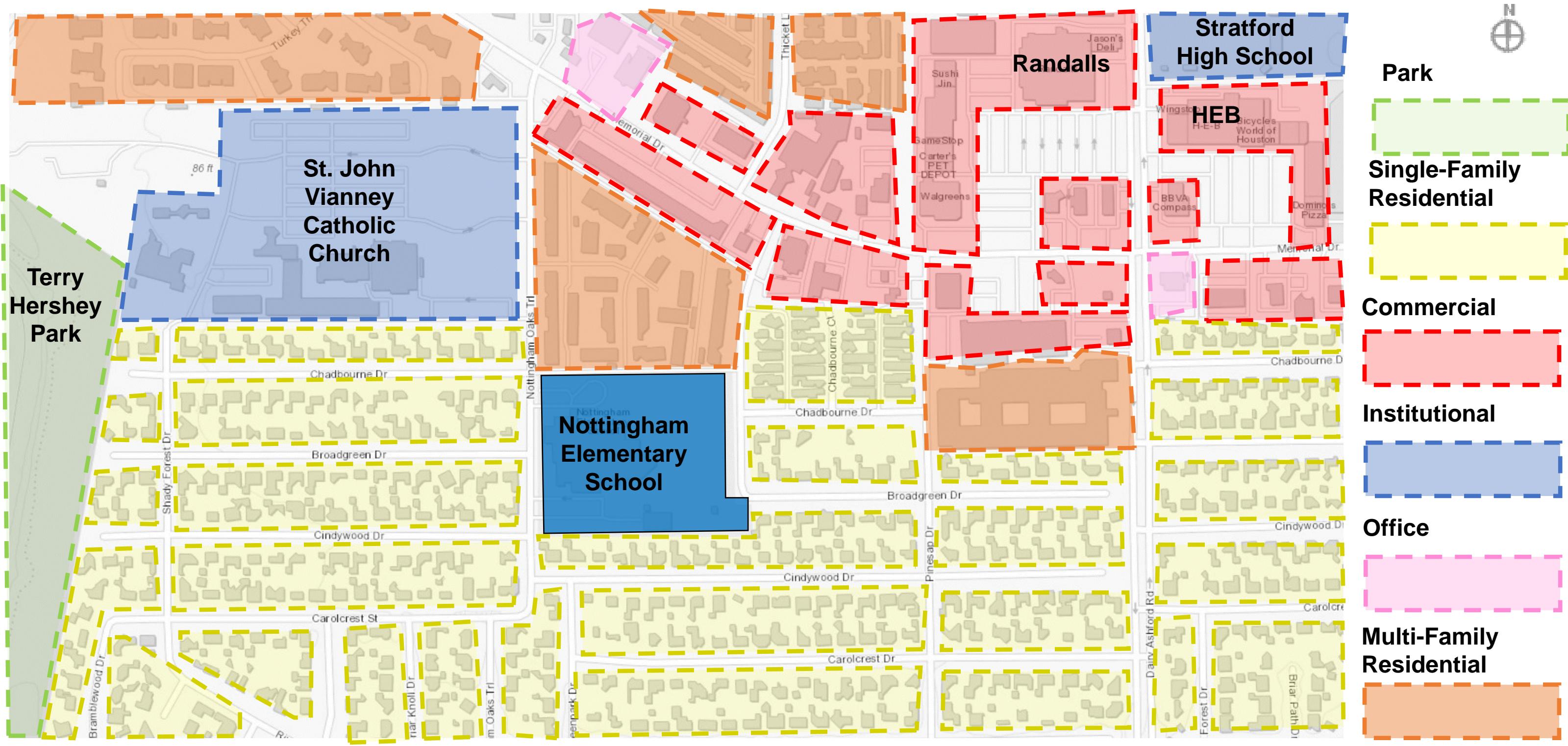


SITE ANALYSIS
Transportation



SITE ANALYSIS

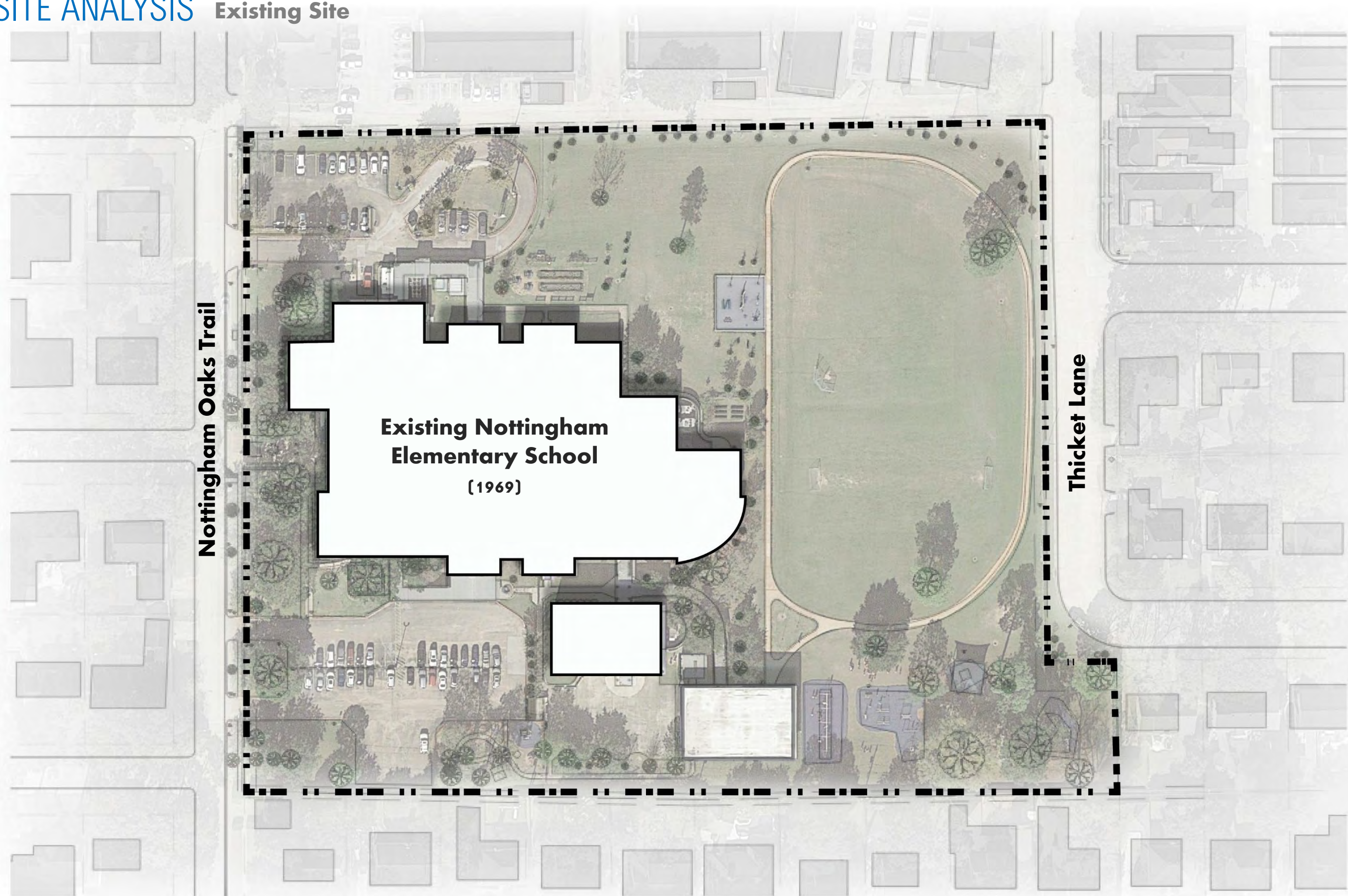
Zoning



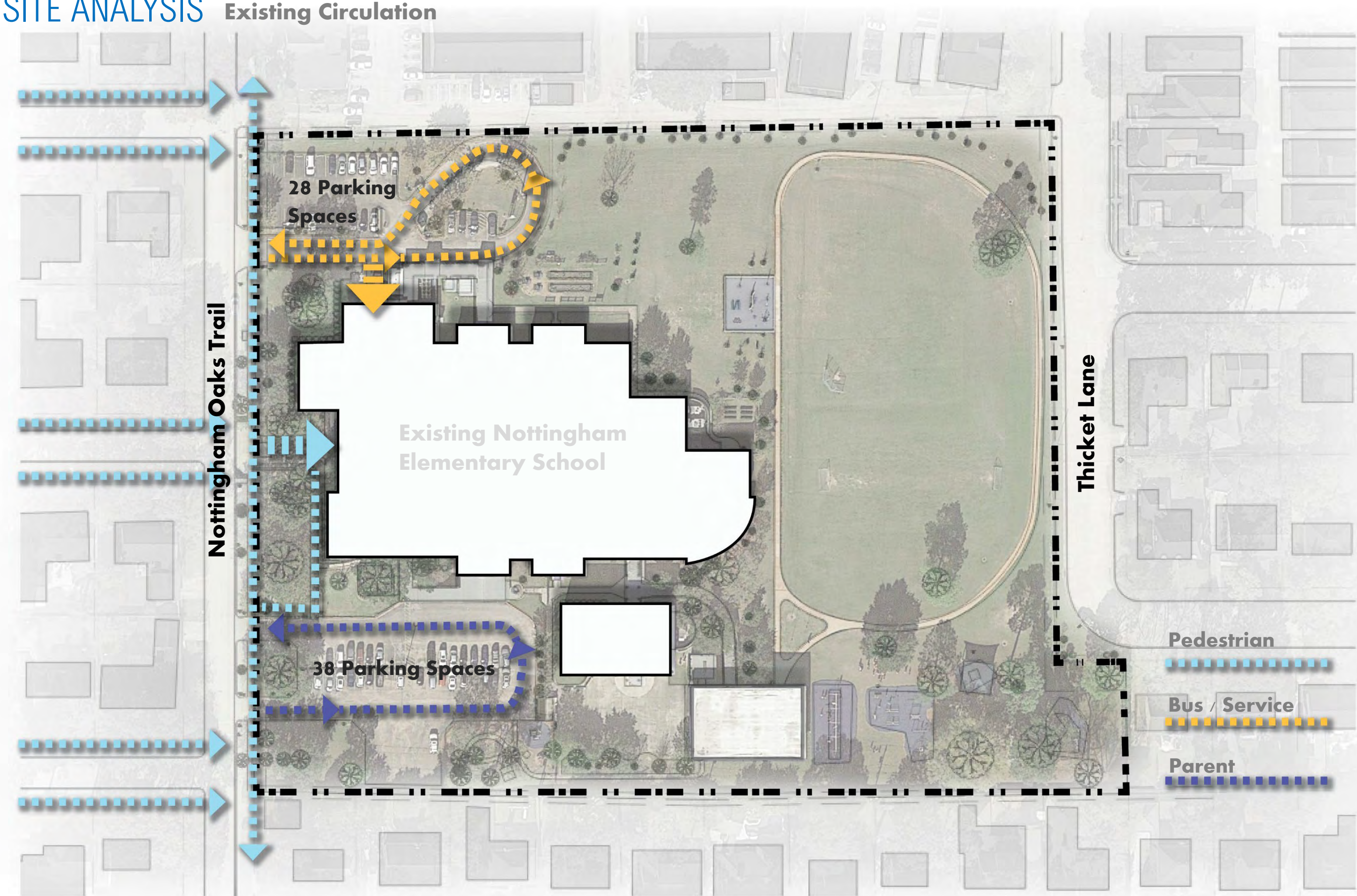
SITE ANALYSIS Existing Site



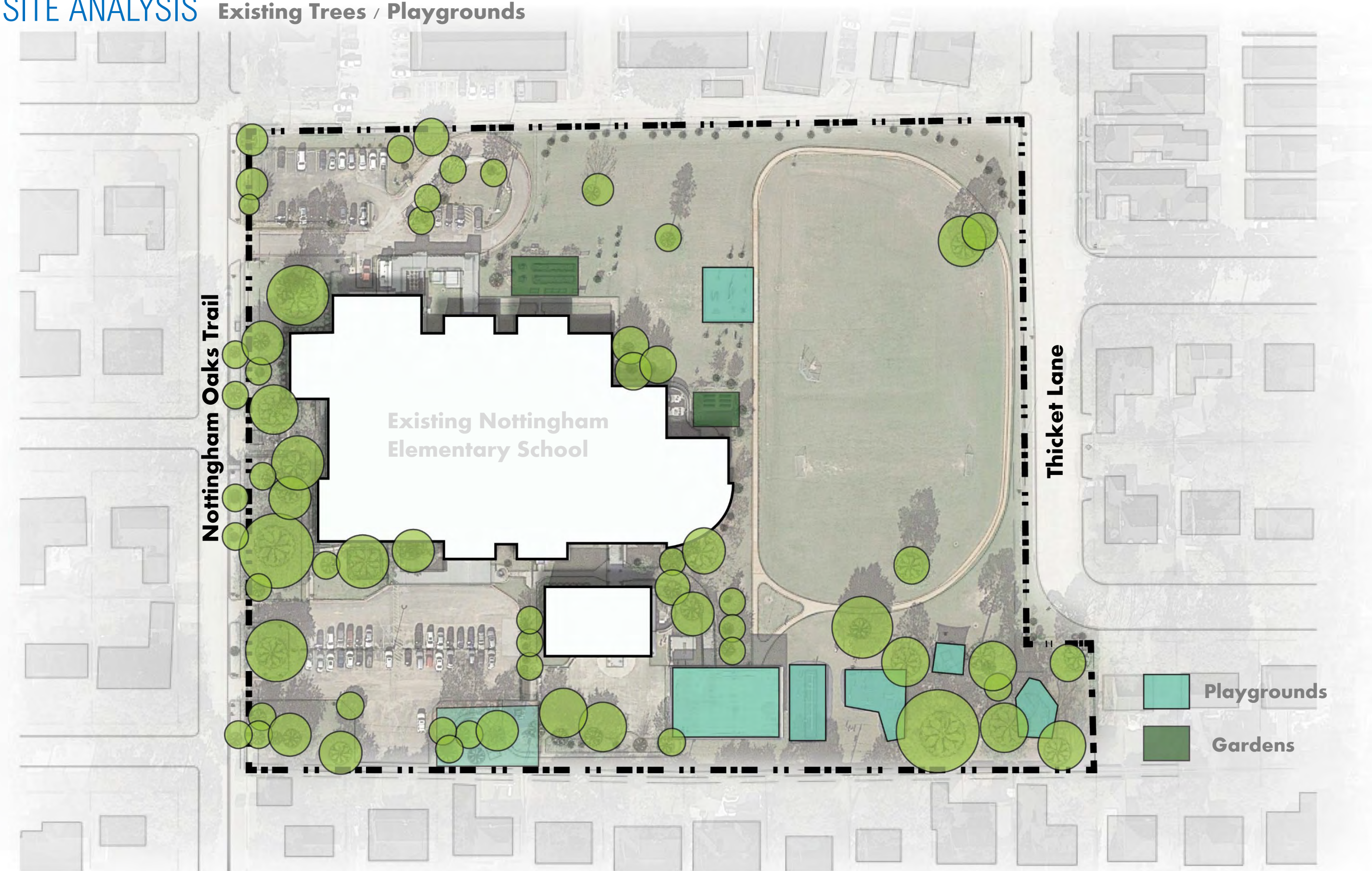
SITE ANALYSIS Existing Site



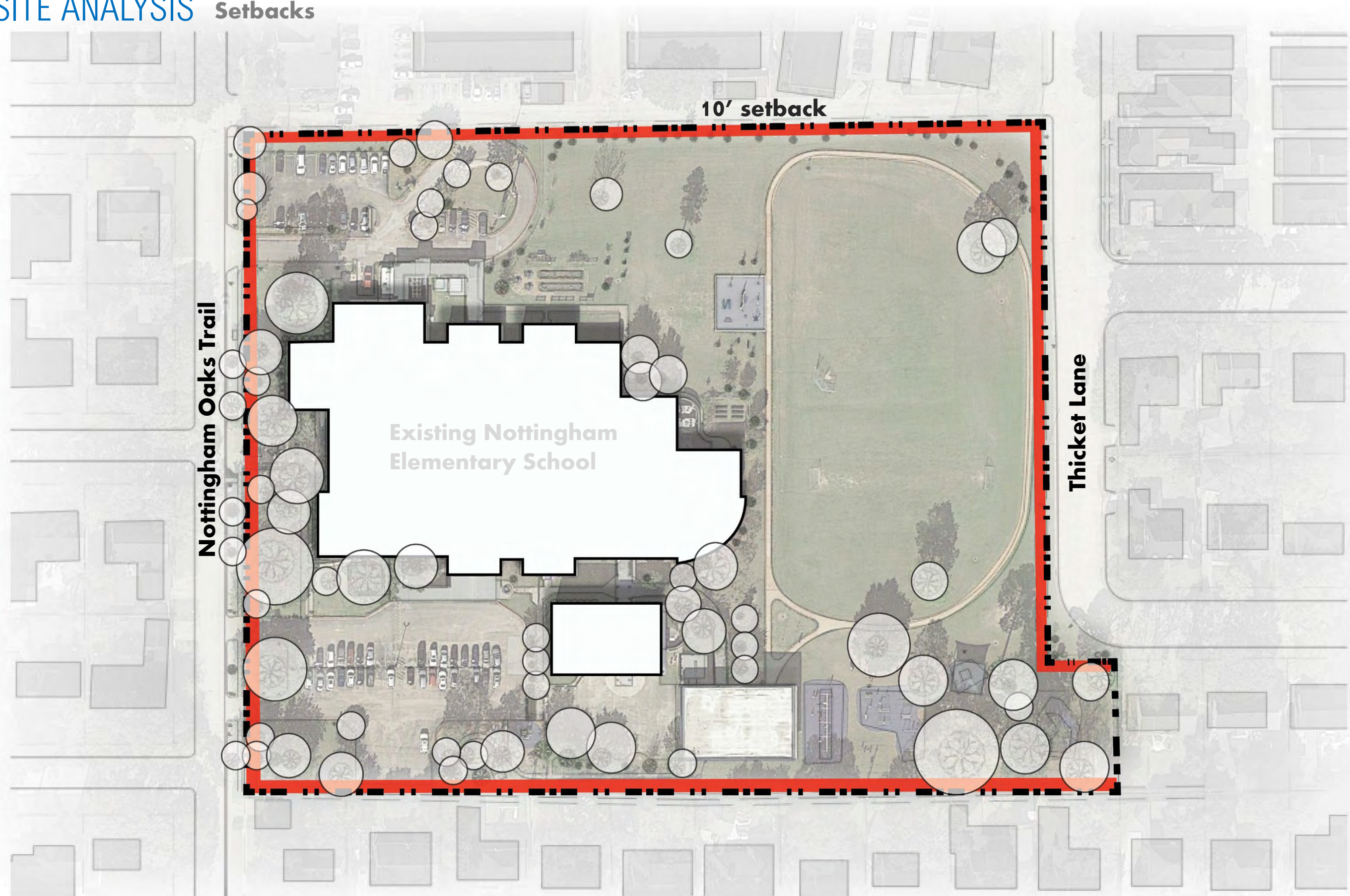
SITE ANALYSIS Existing Circulation



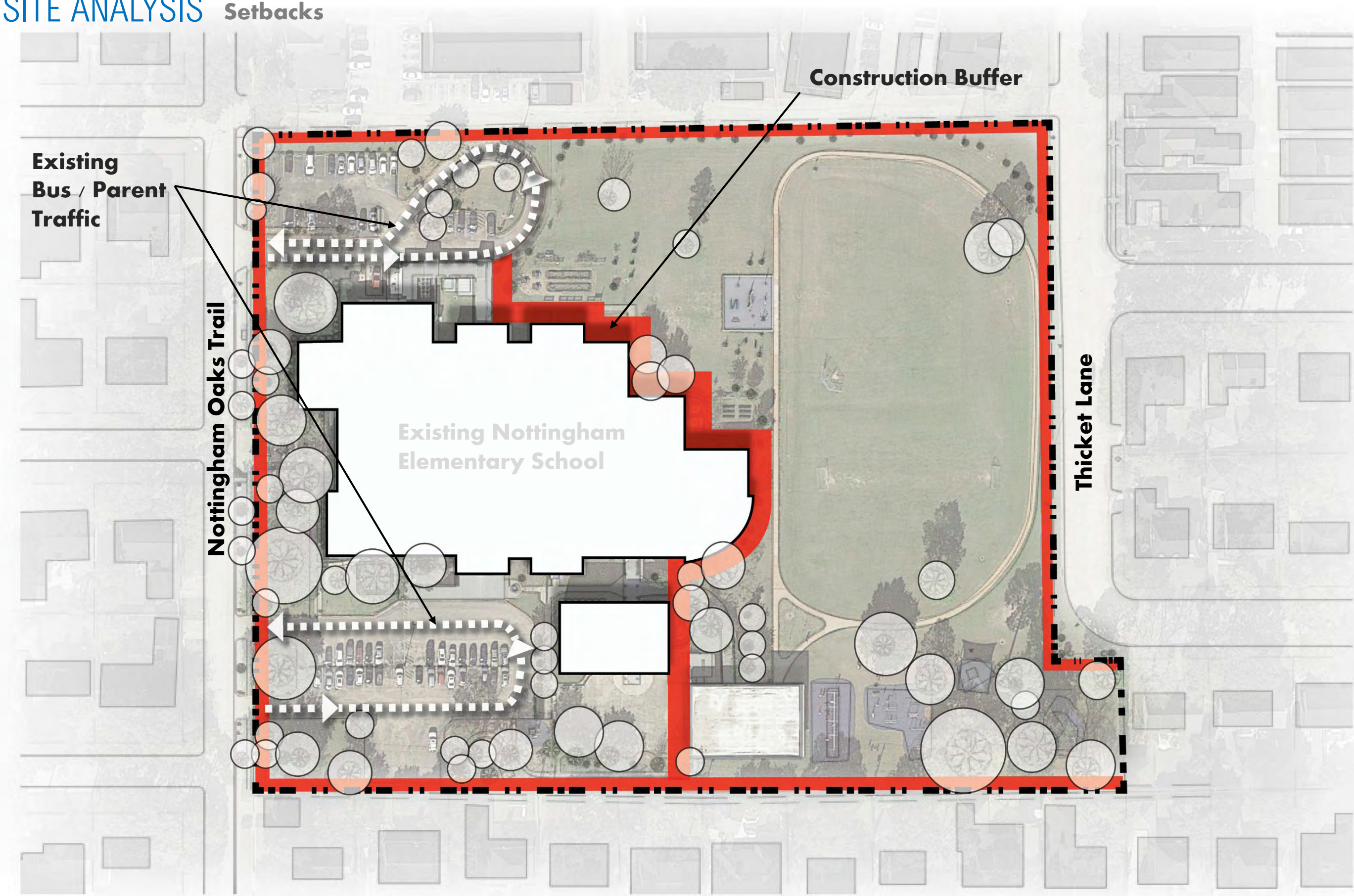
SITE ANALYSIS Existing Trees / Playgrounds



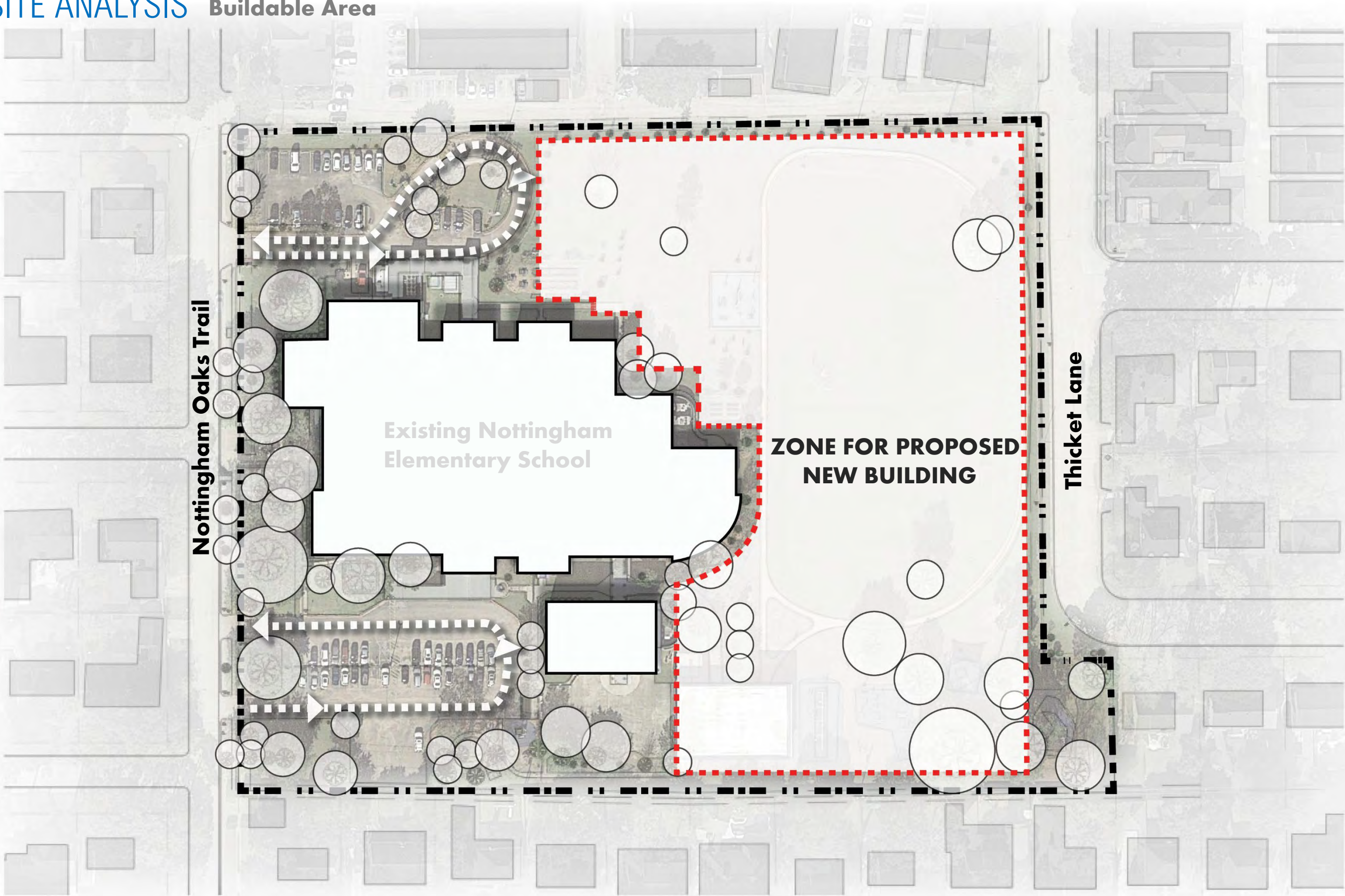
SITE ANALYSIS Setbacks



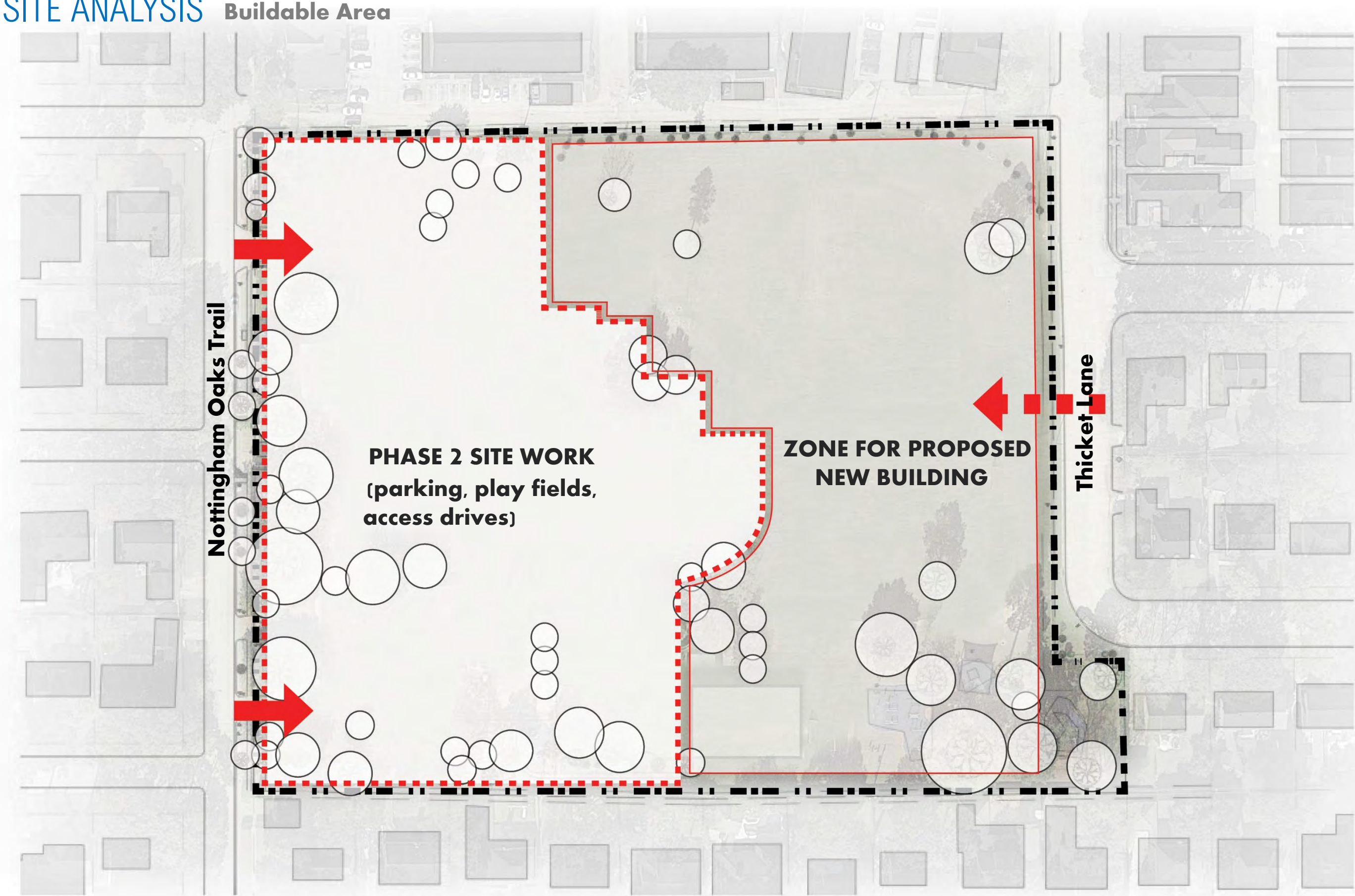
SITE ANALYSIS Setbacks



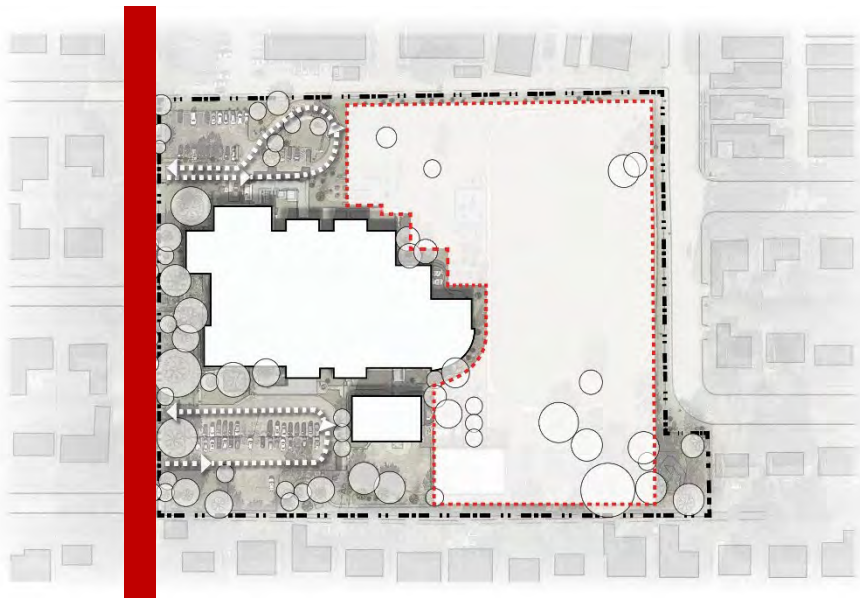
SITE ANALYSIS Buildable Area



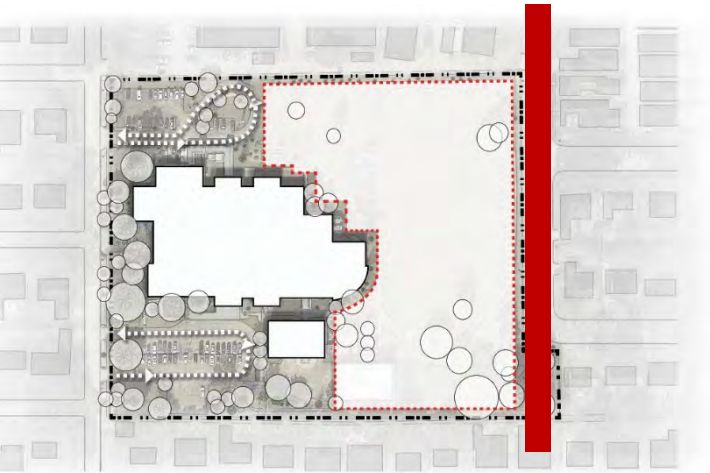
SITE ANALYSIS Buildable Area



SITE ANALYSIS Existing Site



SITE ANALYSIS Existing Site



SITE DIAGRAMMING

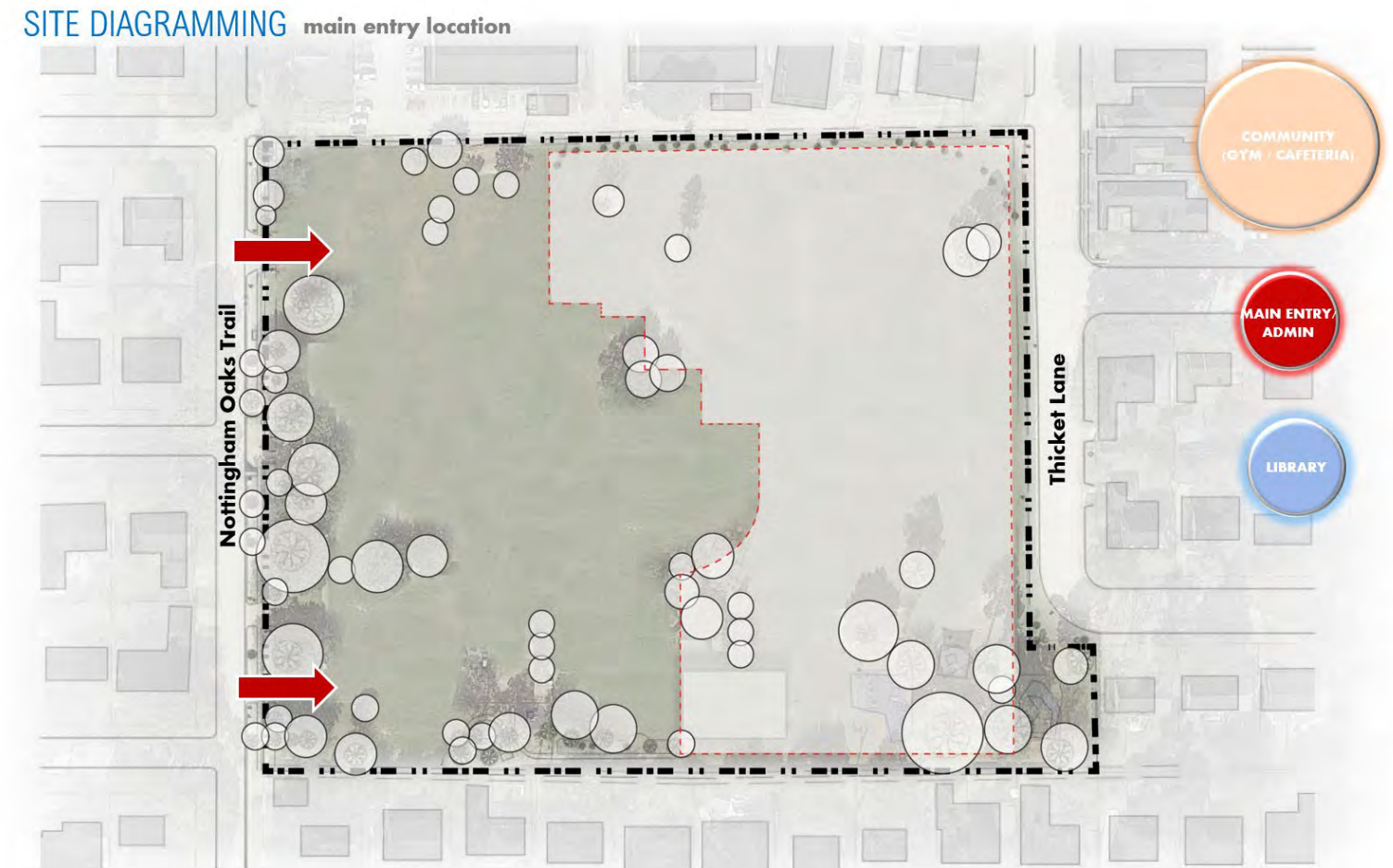
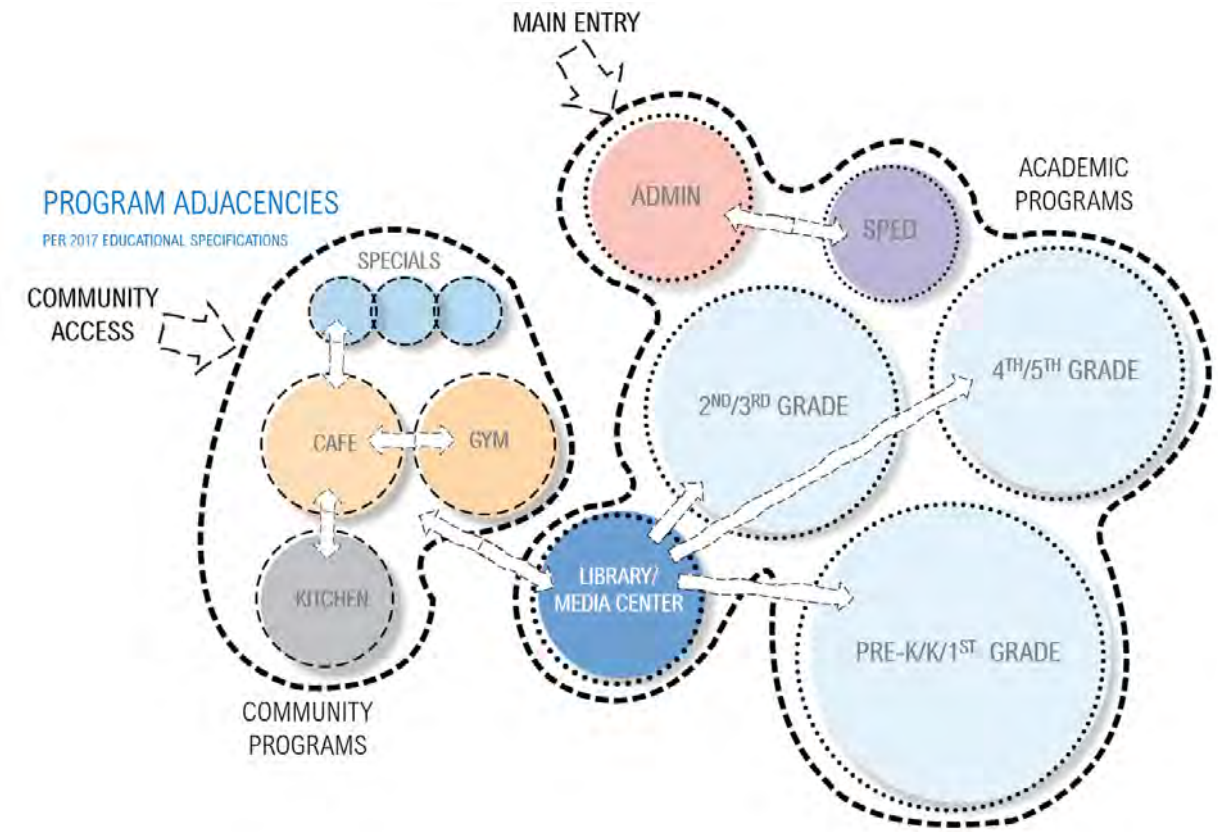
Visioning Session/ PAT thoughts : 20 minutes

BREAKOUT GROUPS (remain in zoom)

Group 1 – Jorge/Juan

Group 2 – Phillip / Melissa

Group 3 – Daniel / Brandon



NEXT STEPS

Closing Remarks

ARE WE HEADING IN THE RIGHT DIRECTION FOR THE NEW NOTTINGHAM DESIGN AFTER PAT #1?

Next PAT meeting

february 10, 2021 3:30 PM – 5:30 PM



Thank you!

Nottingham Elementary School