



July 21, 2020

Spring Branch ISD
Bunker Hill Elementary

Project Advisory Team Intermediate Meeting #7 (Zoom Mtg)





RECAP

Meeting Agenda:

1. RECAP: Mtg #1 thru Mtg #6

PAT Process: PAT Charge + PAT Engagement Process Overview

PAT Input: Design Vision + Educational Vision + Guiding Principles

PAT Voting Results: Preliminary Exterior + Interior Design

2. PAT Mtg #7 Focus: Review Current Status of BHE Design

PAT Information = Site + Floor Plan

PAT Engagement = Q/A + Feedback

PAT Information = Exterior Renderings

PAT Engagement = Q/A + Feedback

PAT Information = Interior Renderings

PAT Engagement = Q/A + Feedback

PAT Engagement = Seek Consensus on BHE Design

3. **Next PAT = August 25th - CD Update**

BHE Project Advisory Team (PAT) – Charge

OVERVIEW

A Project Advisory Team (PAT) will be chartered for the planning of a replacement for **Bunker Hill Elementary School** under the school's project in the 2017 Bond Program.

CHARGE

The PAT will work collaboratively and cooperatively with the architect and SBISD Project Manager **to conceptualize, develop and refine the project's goals and design.**

The PAT will advise on recommendations regarding the planning and development of the replacement of Bunker Hill Elementary School.

These recommendations will be presented by the project's architects:

- 1) to the **Superintendent of Schools**, and based on approval from the Superintendent,
- 2) to the **Board of Trustees** for their approval.

The Board of Trustees may act upon the recommendations developed with PAT input by approving, amending, altering or not approving all or any part of the recommendations.

PAT Engagement: Process Overview

January 2020

- 1 Site Influences
- 2 Program Space Types
- 3 Functional Relationships
- 4 Space Type Attributes
- 5 Architectural Expression

PAT #1
Jan 14th

Site Analysis

✓

PAT #2
Feb 4th

Site Concept

Bldg. Concept

✓

PAT #3
Mar 3rd

Site Concept

Bldg. Concept

Visual Listening

✓

PAT #4
April 21st

Site Plan

Floor Plan

Preliminary

3D Building Massing

PAT #5
Apr 21st

Site Plan Update

Floor Plan Update

Preliminary

3D Design Exterior Views

PAT #6
May 12th

Final Site Plan

Final Floor Plans

3D Views

Exterior + Interior

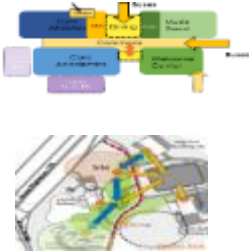
“Virtual” Meeting (4/21)

“Virtual” Meeting

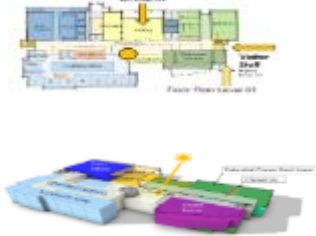
PAT Consensus

May 2020

CONCEPTUALIZE



EXPLORE



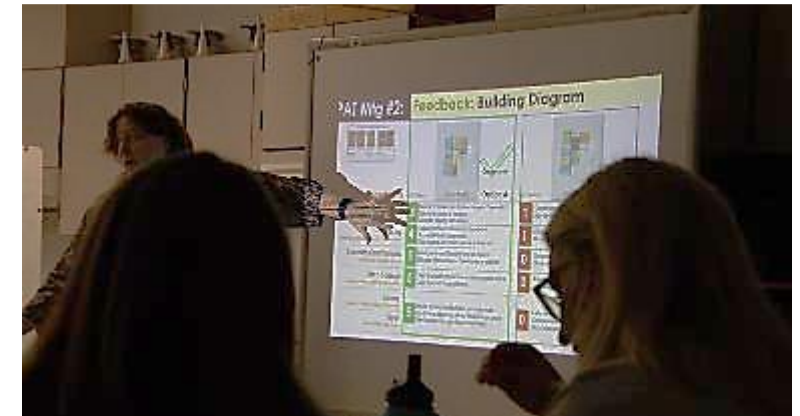
DEVELOP



REFINE



PAT Mtg #1 thru Mtg #3: PAT Engagement → PAT Input from variety of activities influenced New BHE Design



PAT Mtg #3: RECAP

PAT Mtg #3 Feedback → Guiding Principles from PAT set objectives for new BHE design

Q1: Do the proposed plan meet the objectives of the Guiding Principles?

Needs Objectives: 17 (Green checkmark) Unanimous

Essential Objectives: 0 (Red X)

Q2: Preferred Description BHE

Orthogonal Plan: 4 (Green checkmark)

Organic Plan: 6 (Green checkmark)

Hybrid Plan: 2 (Green checkmark)

Consensus: 5 (Green checkmark)

PAT Voting Results (7/7 votes):

- 4 votes - Orthogonal
- 2 votes - Organic
- 1 vote - Hybrid

Orthogonal Plan: 4 votes (Green checkmark)

Organic Plan: 2 votes (Green checkmark)

Hybrid Plan: 1 vote (Green checkmark)

BHE Personality / Character



What makes BHE unique



Existing: Favorite/Least Favorite



Bunker Hill ES | Design Vision Common Themes from PAT:

- Community Oriented / Sense of Closeness
- Embedded in Neighborhood
- Access to Outdoor Learning
- Student Centered / Inclusive
- Natural / Open / Trees / Woodsy
- Welcoming / Family / Friendly

Support Student/Community

PAT Mtg#1 Feedback: Educational Vision		
TEACHING	STUDENT/COMMUNITY	PHYSICAL ENVIRONMENT
• Larger and more flexible meeting, learning, and work areas	• Increased access to outdoor learning opportunities	• Taking advantage of natural environment on site
• Spaces that fit learning programs, performance, and community activities	• Library at center of educational space	• Work/Play
• Ability to connect inside spaces with learning community	• Increased access to outdoor learning opportunities	• Use of Natural Light
• Space will serve as work and play	• Spaces for special learning and value	• Incorporating Plant/Screen

21st Century Learning Environment

PAT Mtg#1 Feedback: Educational Vision		
TEACHING	STUDENT/COMMUNITY	PHYSICAL ENVIRONMENT
• Technology	• Access to outdoor learning opportunities	• Flexible
• Access to flexible meeting, learning, and work areas	• Increased access to outdoor learning opportunities	• Flexible
• Flexible collaborative spaces for teaching and learning	• Increased access to outdoor learning opportunities	• Flexible
• Increased access to outdoor learning opportunities	• Increased access to outdoor learning opportunities	• Flexible
• Increased access to outdoor learning opportunities	• Increased access to outdoor learning opportunities	• Flexible
• Increased access to outdoor learning opportunities	• Increased access to outdoor learning opportunities	• Flexible

Teaching and Learning

PAT Mtg#1 Feedback: Educational Vision		
TEACHING	STUDENT/COMMUNITY	PHYSICAL ENVIRONMENT
• Collaborative Teaching and Learning	• Increased access to outdoor learning opportunities	• Flexible
• Increased access to outdoor learning opportunities	• Increased access to outdoor learning opportunities	• Flexible
• Increased access to outdoor learning opportunities	• Increased access to outdoor learning opportunities	• Flexible
• Increased access to outdoor learning opportunities	• Increased access to outdoor learning opportunities	• Flexible
• Increased access to outdoor learning opportunities	• Increased access to outdoor learning opportunities	• Flexible
• Increased access to outdoor learning opportunities	• Increased access to outdoor learning opportunities	• Flexible

Bunker Hill ES | Educational Vision Common Themes from PAT:

- Library at Center of Instruction
- Natural Light / Views to Exterior
- Flexible / Collaborative Spaces
- Access to Outdoor Learning
- Safe Environment / Student Movement
- Student Focused / Build Thinking Skills

Bunker Hill ES | Guiding Principles Design Objectives from PAT:

- 1. Open and Welcoming feeling.**
Inviting to and inclusive of the diverse community.
- 2. Embedded within Natural setting.**
Connected with views and access to walkable neighborhood.
- 3. Student centered and Parent involved.**
Celebrating excellence, achievement and tradition.
- 4. Flexible, Collaborative and Forward Thinking.**
Responsive to Teaching and Learning objectives over time.

Comments:

Provide any additional comment you would like to share:

Positive Feedback: PAT general comments about the Design

- Really like how you **blended the organic and orthogonal elements** together. The **hybrid design** makes a better use of space.
- The design itself is a functional design that makes **good use of windows and natural light**.
The **trees** will break up the more modern aesthetic and help it to blend in.
- **Good blending of elements and styles**. It shows modern while still honoring the natural elements of the neighborhood.
- The building feels very modern for a very traditional areas... **brick choices** do soften the modern tones, and **darkened windows** will be a nice touch.
- **Great job!** Love the preliminary exterior design materials.

Need Clarification: PAT general questions about the Design

- **Looks like there are more classrooms on Floor 2:** How will a large 2nd grade class swing in enrollment be handled?
- **Bike Racks – Most of students come from the south:** 90 percent of the bike riders come from the south, only a few from the north.
- **How tall is the fence around the Learning Plaza?** 4 ft might be too low.... 6 ft would be better for safety.

NOT part of the Design / PAT Charge: PAT general comments outside of the PAT Committee Charge

- I am worried about **student enrollment growth + quantity of classrooms**
- **Add bridge access** across drainage from southwest corner at Taylorcrest

Comments:

Provide any additional comment you would like to share:

Positive Feedback: PAT general comments about the Design

- Overall the design is **beautiful!** Like the **artwork with the colored backdrop** in the lobby. Love the **colorful feature walls**.
- It feels pretty **contemporary** wondering about the edges/corners... prefer a soft/forgiving feel.
- The **lion mural** by Dining/Gym + Art/Science is a great idea... re-creating the current mural at a larger scale.
- Love the **natural light** that has been incorporated into the **dining** and **library** common spaces.
- **Love the details:** open **wood screen** at stairs, **feature wall** block of glass and wood looking through the library to the hall, and the **lobby wall art kid silhouette shapes** from the current school entrance.
- Like the **natural wood elements** that are proposed.

Need Clarification: PAT general questions about the Design

- **Memorial Forest Neighborhood:** Consider more organic elements on the west and north exterior sides of the building. Please provide additional information on location of security lighting and/or light poles on the west side of building. Provide more renderings of the west side of the building.
- **Building Height / Setback:** Please provide estimated height range of the 2-story parts of the building facing Memorial Forest on the west side. Please provide the estimated distance from west perimeter to the west side of the building.
- **Interior Finishes:** Would like more information on the tone/shade of the proposed colors.
- **Dining / Gym Wall:** Has it been decided if the cafeteria will be opened to the gym for additional space?

NOT part of the Design / PAT Charge: PAT general comments outside of the PAT Committee Charge

- **Appreciate the 1 additional classroom...** still concerned about **student enrollment growth + quantity of classrooms**.
- **Classroom Sinks:** Want to have sinks in all classrooms.



Meeting Agenda:

1. RECAP: Mtg #1 thru Mtg #6

PAT Process: PAT Charge + PAT Engagement Process Overview

PAT Input: Design Vision + Educational Vision + Guiding Principles

PAT Voting Results: Preliminary Exterior + Interior Design

UPDATE

2. PAT Mtg #7 Focus: Review Current Status of BHE Design

PAT Information = Site + Floor Plan

PAT Engagement = Q/A + Feedback

PAT Information = Exterior Renderings

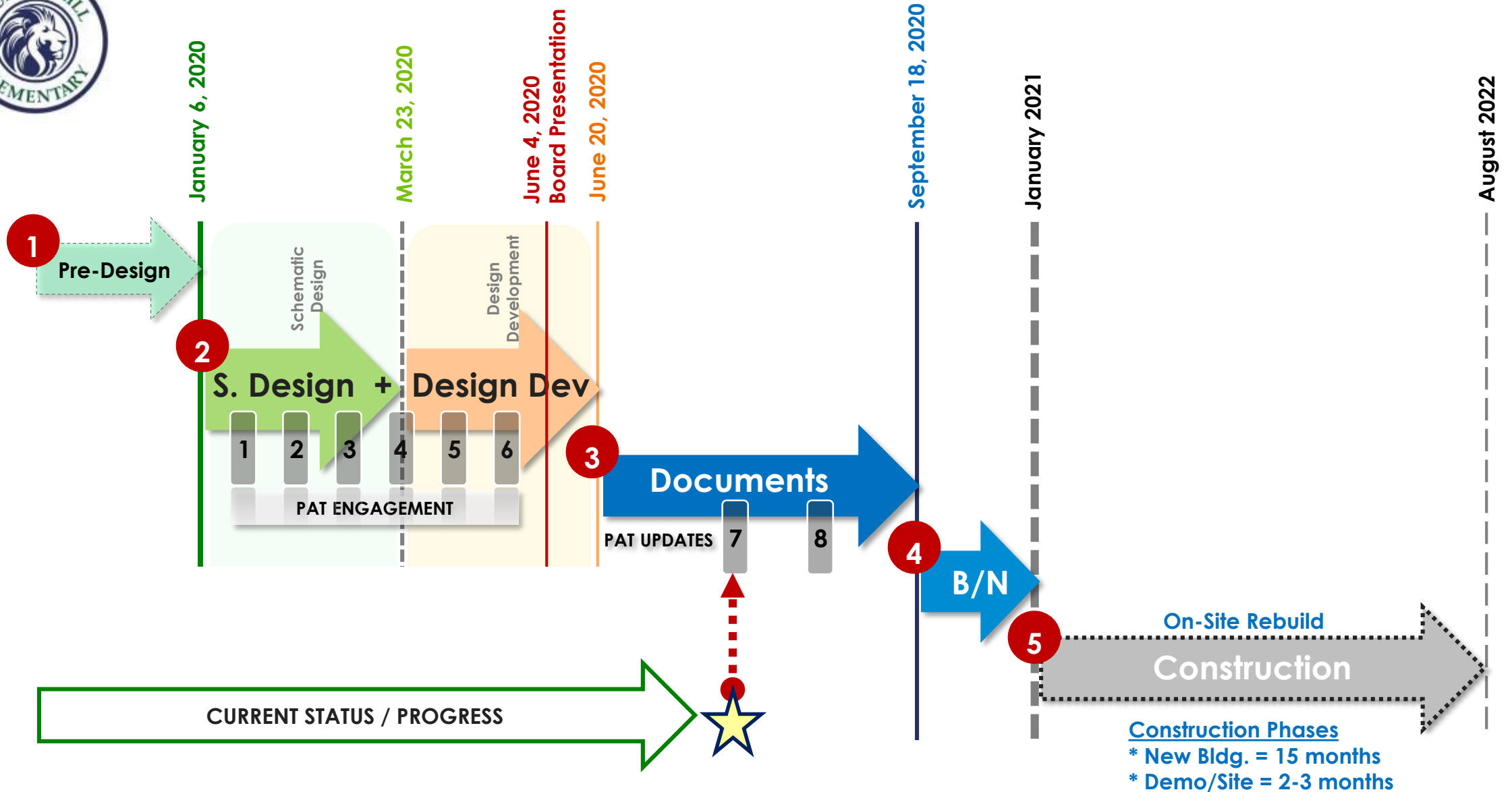
PAT Engagement = Q/A + Feedback

PAT Information = Interior Renderings

PAT Engagement = Q/A + Feedback

PAT Engagement = Seek Consensus on BHE Design

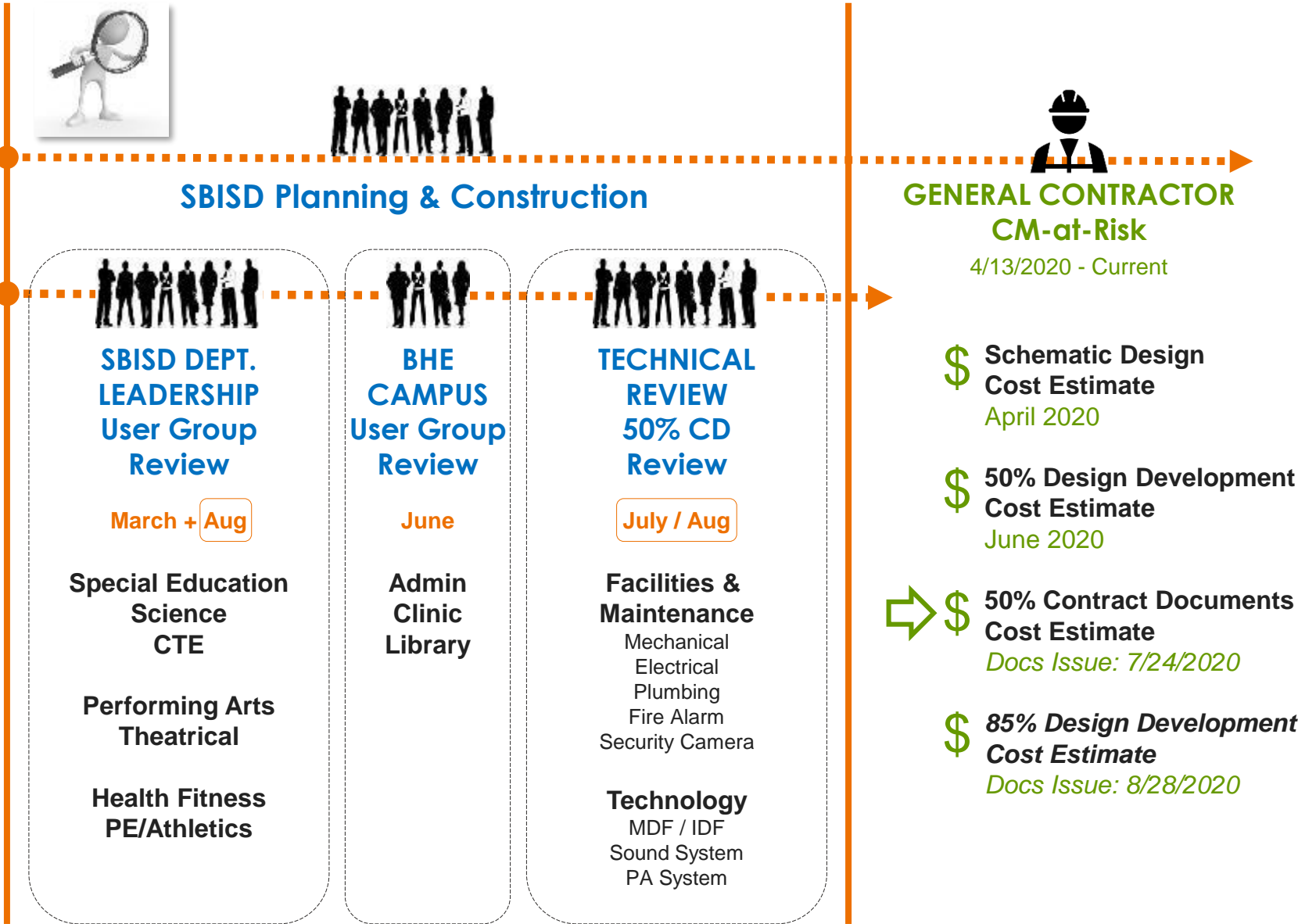
3. Next PAT = August 25th - CD Update



Milestone Activities: Design / Documentation Phase

PRESENT DESIGN BHE Recommendation

SBISD Admin (5/28) + Board (6/8)





Bunker Hill ES Design PAT Mtg#7 – Design Update

1. Site Plan Updates

- a) Site Plan
- b) Neighborhood Site Section

(Highlight Changes: SBISD Campus + District + Bunker Hill Village)
(Highlight Key Data: Relationship of School to West Neighborhood)

2. Floor Plan Updates

- a) Floor 1 + Floor 2 Plan
- b) Demographics / Capacity Study

(Highlight Changes: Summer Meetings w/ Campus + District)
(Highlight Key Data: 2020 Demographics Study)

3. Design Rendering Updates

- a) Exterior 3D Images
- b) Interior 3D Images

(Current Status: Based on Campus + District Mtgs held over summer)
(Current Status: Based on Campus + District Mtgs held over summer)

NW Entry:
Parent
Stacking
+ Pick-up
Drop-off

Pedestrian

Parent Drop-off

Bikes

Service

Back
Entry

Plaza
Entry

Bikes

Play
Fields

Learning
Plaza

Front
Entry

Bus Drop-off

Visitor Parking

Visitor / Staff Parking

Monument
Sign

Staff Parking

Playground

Gate

Pedestrian
Bridge



Bunker Hill ES Design Update Site Plan

1. Perimeter Boundary / Security

- a) **Site Access** (Existing access points to campus remain as is)
- b) **Site Access Gates** (4 Gates: Campus Controlled)
- c) **Site Fencing** (6ft at Perimeter + Playground + Learning Plaza)
- d) **Building** (Main Front Entry, Back Secondary Entry)

2. Traffic Flow

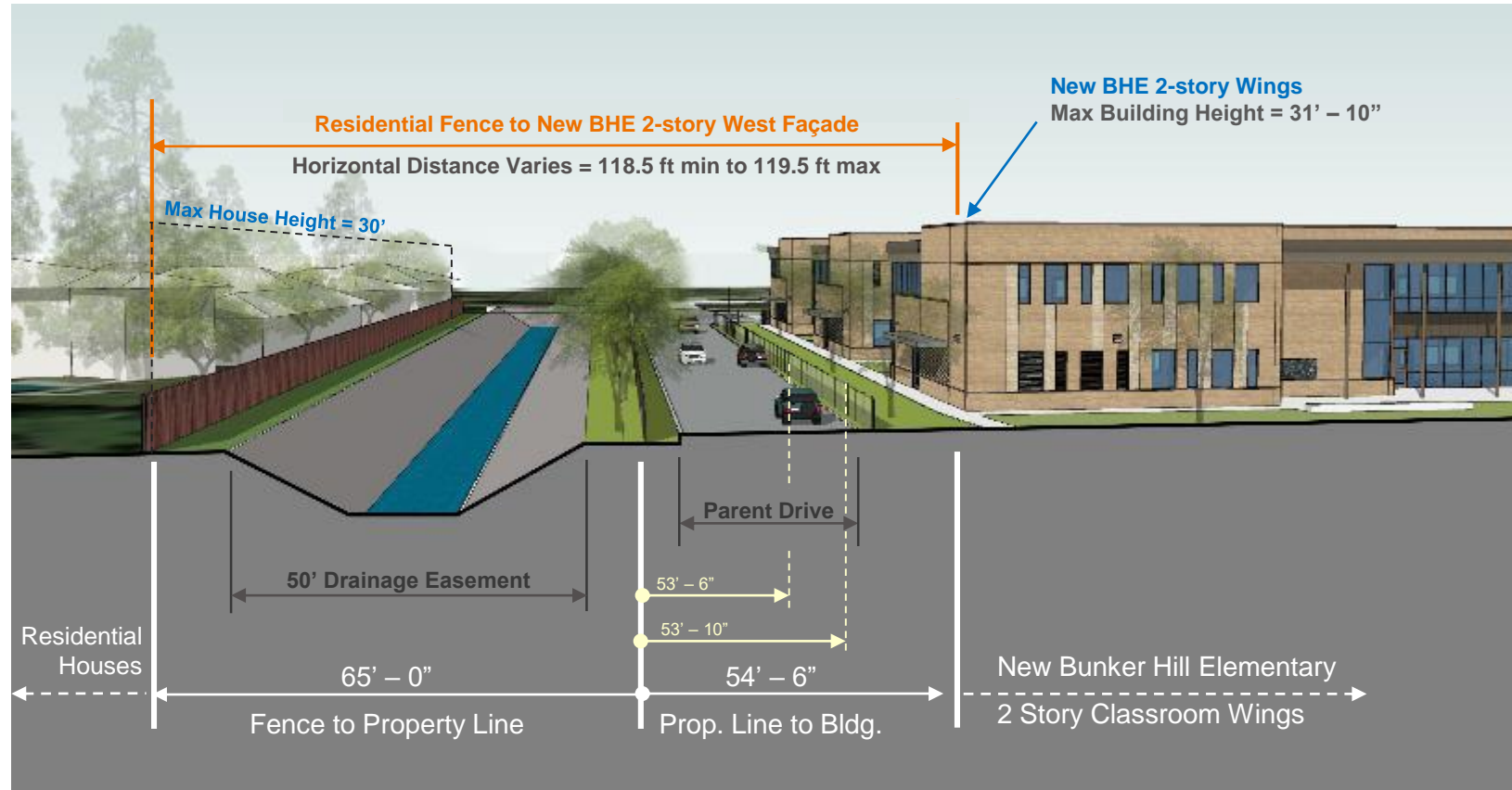
- a) **Pedestrian Walks** (3 points of entry)
- b) **Parent Drive/Drop-off** (NW corner from neighborhood)
- c) **Bus Drive/Drop-off** (SE corner from Taylorcrest)
- d) **Visitor Entry** (SE corner from Taylorcrest)
- e) **Student Bike Racks** (80 near Gym + 20 at Parent Drop-off)

SE Entry:
Pedestrian
Buses + Visitors



Bunker Hill ES Design Update

BHE Neighborhood Site Section



Site Section Diagram illustrates site context critical dimensions of new BHE in relation to the west neighbors:

Horizontal Distance: Ranges from 118.5 to 119.5 ft at the new BHE 2-story Classroom Wing

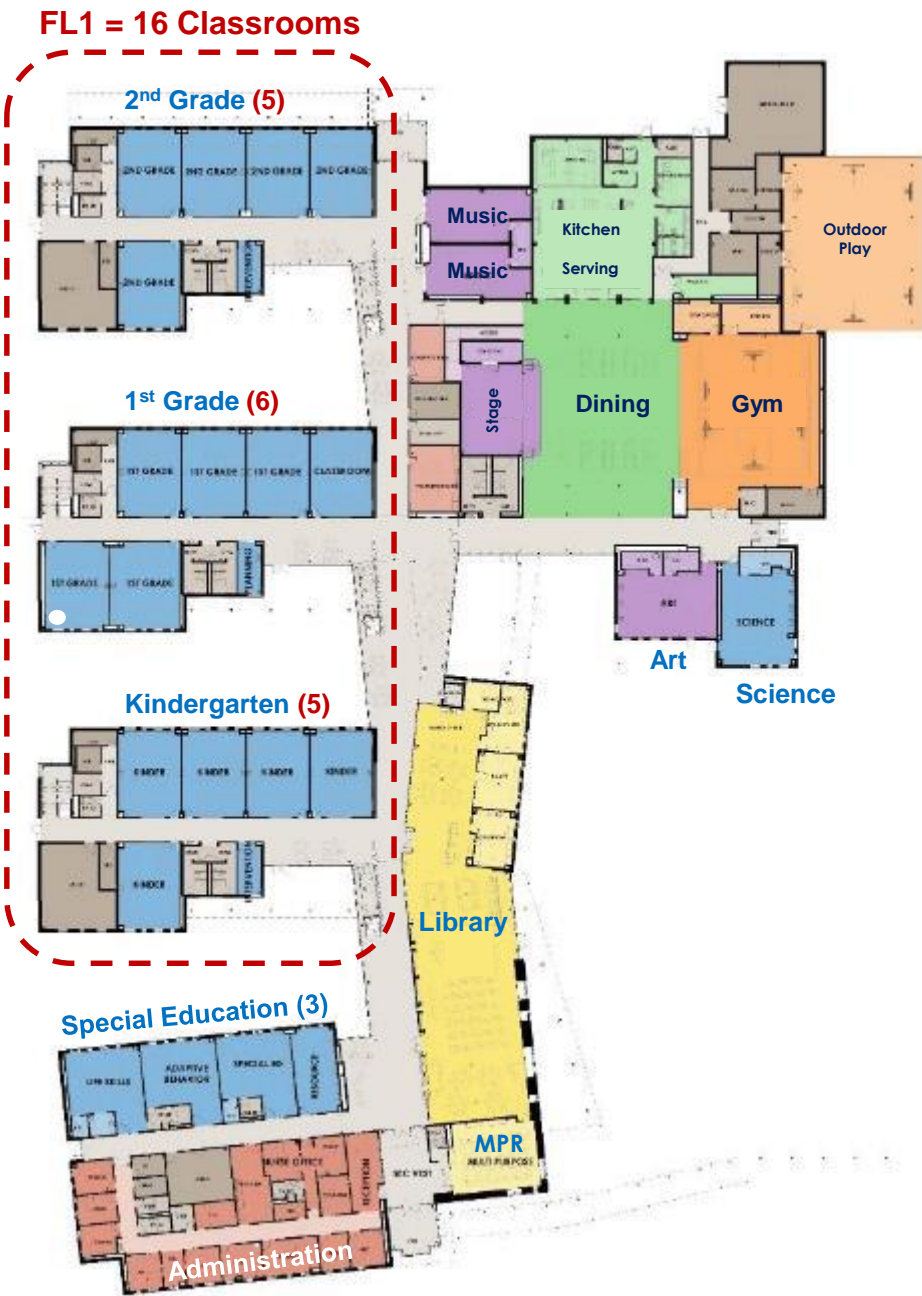
- 65' – 0" Total horizontal distance from Residential Fence to west BHE Property Line includes the 50ft drainage easement
- Horizontal distance of 2-story portion New BHE west facade varies in its location from west BHE property line.
- West Residential Houses vary in horizontal location from each respective fence that borders the drainage easement.

Vertical Building Height: Maximum Building Height of 31' – 10" from first floor level to top of new 2-story portion of the new BHE Building.

- West Residential Houses vary in height (1 & 2-story).

Bunker Hill ES Design Update

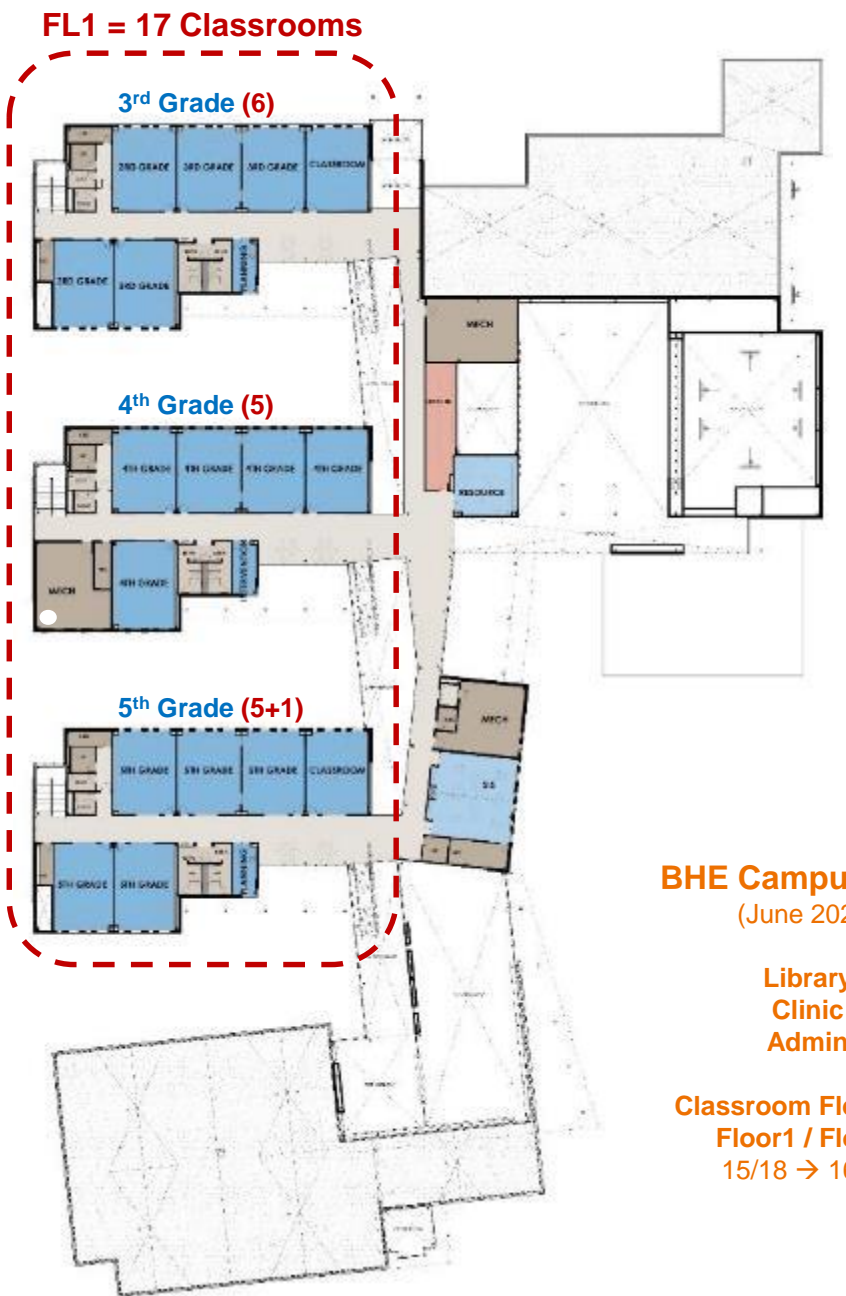
Floor Plans



- 5 = PK/Kinder
 - 6 = 1st grade
 - 5 = 2nd grade
 - 6 = 3rd grade
 - 5 = 4th grade
 - 6 = 5th grade (5+1)
- 33 Classrooms Total**

Legend

- Administration
- Media Center
- K-5th, SPED, Science
- Collaboration/Flex
- Dining Commons
- Gym / C. Play
- Art / Music
- Building Support
- Circulation



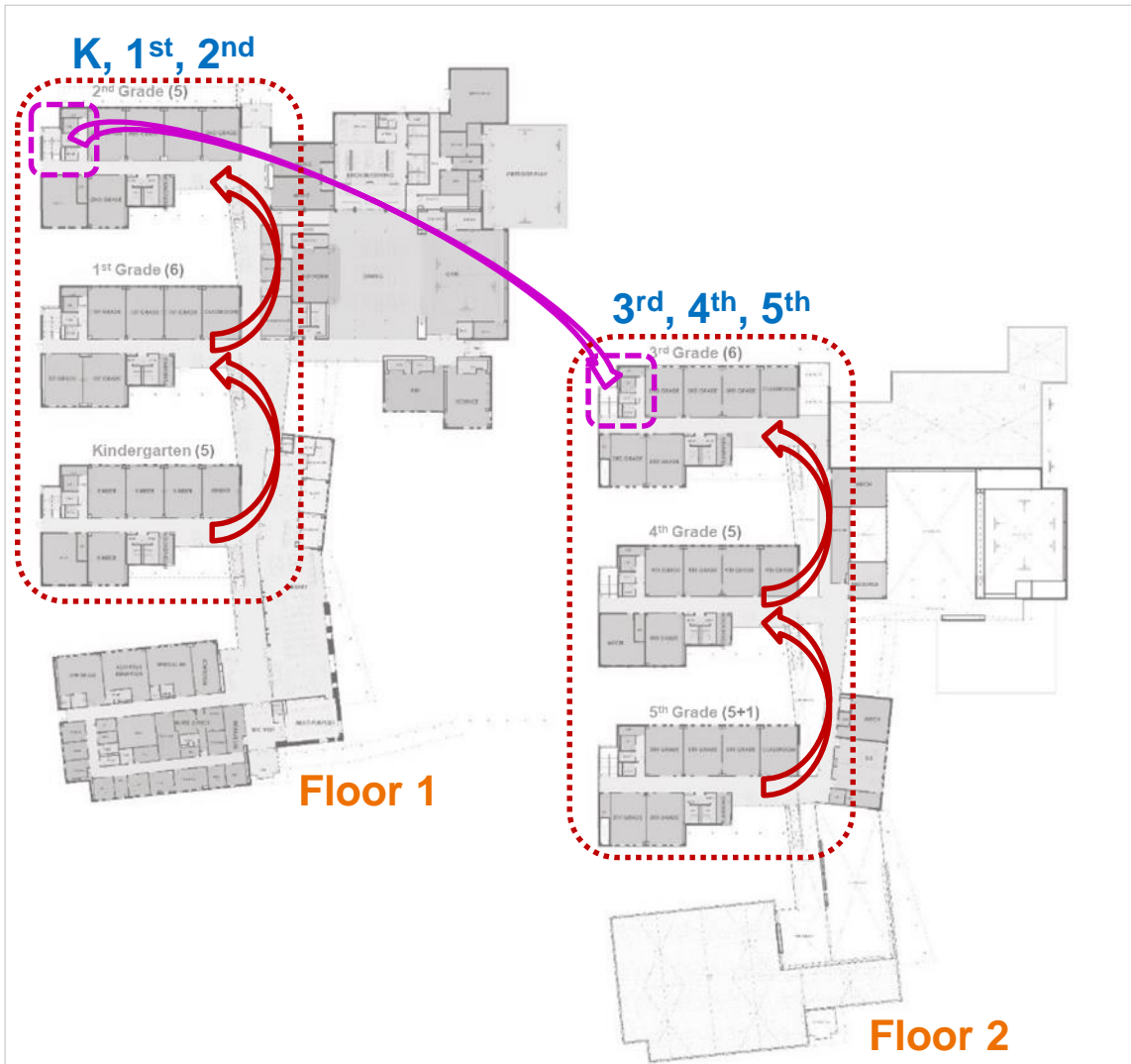
BHE Campus Input
(June 2020)

Library
Clinic
Admin

Classroom Flexibility
Floor1 / Floor2
15/18 → 16/17



Bunker Hill ES Design Update Classroom Quantity + Location



Floor Plan Update

Floor Plan Update:

- New BHE Design provides 33 Classrooms (K - 5th Grade)**

The design provides one extra classroom than originally planned (32 + 1 flex classroom) as a result of the building design layout. This provides grade level swing space and will also accommodate any future enrollment growth.

Classroom Floor Plan Locations:

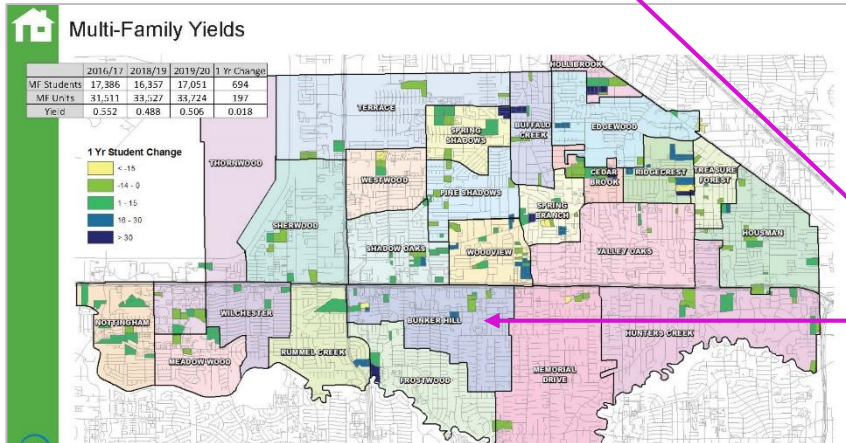
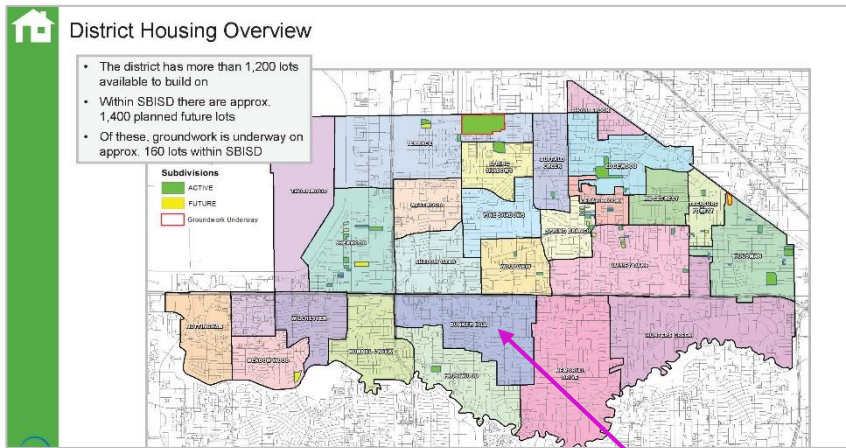
- Floor 1 = **16 Classrooms** (Kinder, 1st, 2nd Grade)
 - Floor 2 = **17 Classrooms** (3rd, 4th, 5th Grade).
- Grade Level Swing Flexibility:** The design provides flexibility for grade level classrooms as student enrollment adjusts over time.
 - Enrollment changes impacting the number of grade level classrooms can shift between wings on the same floor.
 - If K-2nd grade classroom quantity needed exceeds the quantity on floor 1, a 2nd grade classroom can be located on floor 2 near designated stairway for 2nd Grade students use.



Bunker Hill ES Design Update

Demographic Study: Process Overview + Bunker Hill ES Data

		Year 1 - 5 Projections					Year 6 - 10 Projections				
	Fall	ENROLLMENT PROJECTIONS									
Campus Name	2019/20	2020/21	2021/22	2022/23	2023/24	2024/25	2025/26	2026/27	2027/28	2028/29	2029/30
Bunker Hill Elementary	614	629	631	655	680	690	689	697	695	702	695



- **Templeton Demographics: Presented to Board on May 4, 2020**
- **Demographic Study: Factors**
 - Review Previous Trends** (Enrollment, Housing)
 - Review Development Conditions** (Single Family, Multi-Family, Redevelopment areas)
 - Economic Factors** (Job growth and Unemployment)
 - Mobility Factors** (Charter impact, Harvey impact, Transfer patterns)
 - Birthrate Ratio to Kindergarten**
- **Demographic Study: Research**
 - Metro Study Housing Survey** (Recording New Home - Starts, Closings, Under Construction)
 - Deed Transaction Data** (All Home Sales within the District)
 - City Planning Research** (Platting Activity)
 - Apartment Research** (New Construction, Occupancy Rates, Rent Rates, Year Built, Class)
- **Demographic Study: Bunker Hill ES Data**
 - Single Family Housing:** No Active or Future Developments Planned
 - Multi-family Housing:** BHE Zone Elementary Student Yield = 0.07 students (District ES Yield = 0.50 students)
 - 10-year Enrollment Forecast:** Range from (low) 629 students to (high) 702 students



Bunker Hill ES Design Update

Demographic Study / Capacity Study – Bunker Hill ES Data

CAMPUS	CAPACITY		Year 1 - 5 Projections							Year 6 - 10 Projections				
	Perm.	Total	SCHOOL YEAR- Projected Enrollment (including transfers) vs. Capacity											
			2019/20	2020/21	2021/22	2022/23	2023/24	2024/25	2025/26	2026/27	2027/28	2028/29	2029/20	
ELEMENTARY SCHOOLS			Current	YR 1	YR 2	YR 3	YR 4	YR 5	YR 6	YR 7	YR 8	YR 9	YR 10	
Bunker Hill Elementary			614	629	631	655	680	690	689	697	695	702	695	
Design Capacity		735	735	735	735	735	735	735	735	735	735	735	735	
% of Capacity			84%	86%	86%	89%	93%	94%	94%	95%	95%	96%	95%	

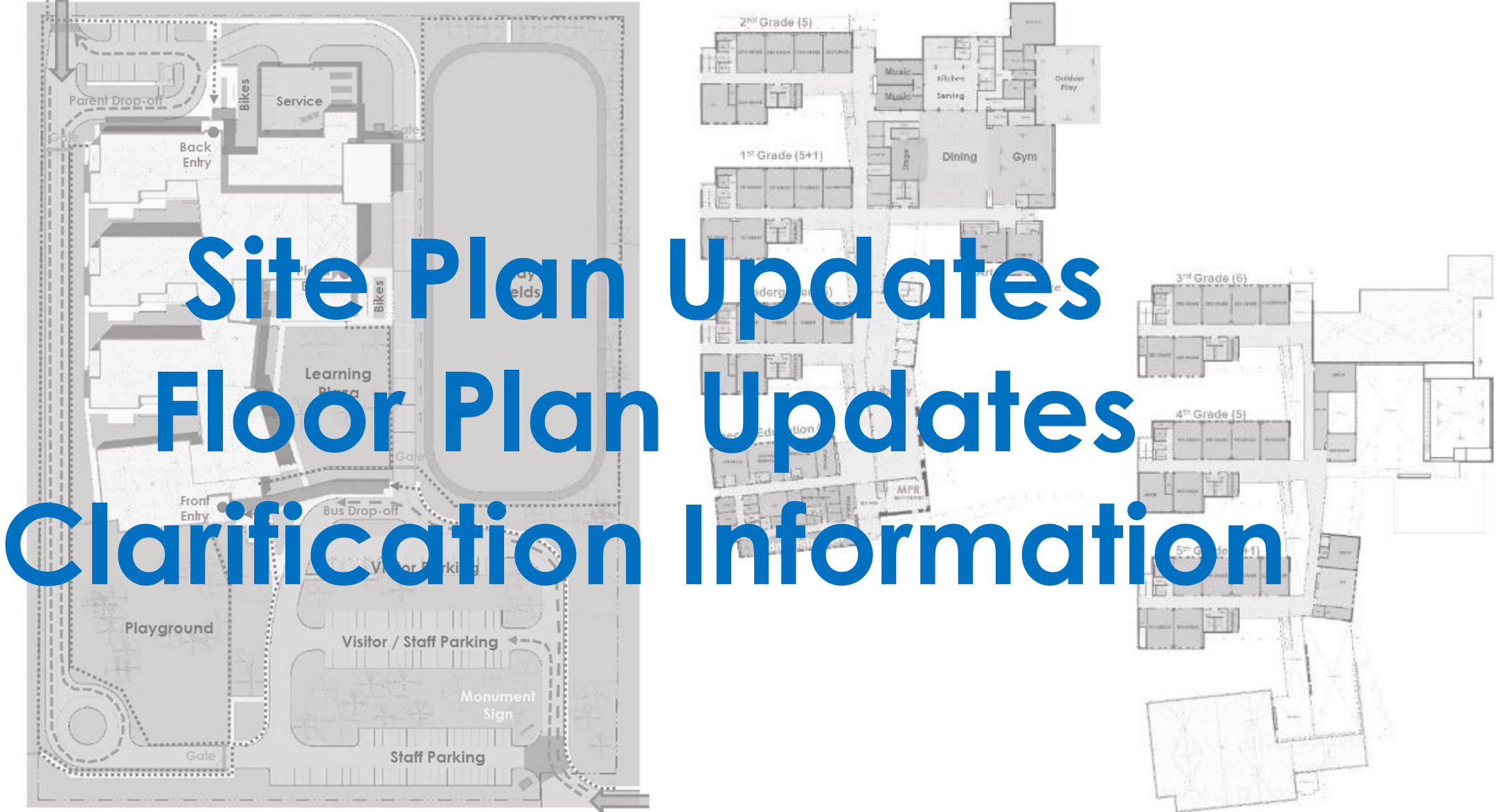
Information from 2020 Demographic Study and 2020 Capacity Study:

- **Future Enrollment Forecast:** Range over the next 10 years = **629 – 702 students**
- **New BHE Capacity Data:** 2020 District wide Capacity Study
Building Capacity Range: “**Design**” Occupancy and “**Building**” Occupancy
Occupant Planning Quantity varies by Grade Level + Special Education Classrooms

The new BHE “**Design / Building Capacity**” = **Approximately 735 - 770 students**
This range includes the 33 Grade Level classrooms + 3 Special Education classrooms

BHE future enrollment forecast can be accommodated within the number of classrooms in the design.







Updated Exterior 3D Views

Building Shape / Forms + Exterior Finish Materials shown in the following 3D images communicate the proposed exterior expression of the new BHE design.

You will see how the **proposed exterior building materials** help create a new facility that **compliments** and fits into the surrounding **neighborhood context**.

Brick colors allow the building to **blend into a natural park like campus** setting.

Wood tone under the canopy and overhangs **with the slender columns evoke the image of trees**.

Use of **glass** provides **views and reflects** the trees and sky.

The organic shape of the **Library embraces the Learning Plaza** anchored by the Art + Science.

Decisions made and direction set from PAT Mtgs #1 thru #6 together influenced the Exterior Development of the Design you are about to see in the next group of slides.



Aerial View

View of Front of School

The scale/height of front entry blends with the neighborhood park like setting and preserves existing trees. Glass entry vestibule at front entry is clearly defined extending an inviting welcome to visitors.



View from Bus Drop-off

The building height steps up in scale from the 1-story portion front entry to the 2-story portion set back from the main pedestrian path under the Bus Drop-off canopy that borders the Learning Plaza green space.



View of East Bldg. Facade

The use of materials and window design of the Library sets it apart from the other building parts.

The Library is the academic heart and central architectural feature and directly connects to the Learning Plaza.



View of Learning Plaza

The patio area provides an area for outdoor learning and space for parents when they visit their children and attend community activities on campus. The canopy provides shade and filters sunlight through the baffles.



View at Gym Entrance

Art and Science has its own dedicated outdoor patio area with direct access to Learning Plaza. Students have direct access to the Bike Racks, Gym, Covered Play and extended activity zone.



View at Parent Drop-off

Parent Drop-off entrance has smaller entry plaza and landscaping elements like the front entry.
The pedestrian plaza provides space for students in cars independent of the student walkers and bike riders..



View at Parent Drop-off / West Facade of Classroom Wings

West façade of the 2-story Classroom Wings provides natural light into the classroom corridors at the stairwells while maintaining minimal views to the neighboring properties to the west.



View at West Façade: Learning Communities / Courtyards

The view along the parent drive stacking lane is a rhythm of Classroom Wings and Learning Courtyards. Trees screen the building and there is limited amounts of glass on this side of the new school.



View at Learning Community Courtyard

Outdoor Learning Community Courtyards have a combination of hardscape and landscape elements supporting a variety of activities (learning, socializing, connecting with nature) including a covered canopy area.





Exterior 3D Images





Bunker Hill ES Design Update Design Rendering Updates

Updated Interior 3D Views

Building Shape / Forms + Interior Finish Materials shown in the following 3D images communicate the proposed interior expression of the new BHE design.

You will see how the **proposed interior finish materials** help create a new facility that **compliments and responds** to the exterior expression.

Exterior brick and stone walls **continue into the interior spaces to connect** the students and staff **with the outdoor learning environments**.

Character of wood tones and color palette recall **organic patterns and textures of sky, water, plants and earth**.

Use of glass provides **natural daylight to the interior and views of the outdoor** park-like setting.

The playful **design of the feature wall** in the main corridor **engages the students** with the Library at the heart of the school.

Decisions made and direction set from PAT Mtgs #1 thru #6 together influenced the Interior Development of the Design you are about to see in the next group of slides.

Lobby / Main Corridor

The School Lobby reinforces the school identity. The Main Corridor is filled with colors found in nature and provides immediate visual connection to the Library plus views to the Learning Community Courtyard.



Library: View to Exterior

Interior finish colors and textures reflect the natural park like campus setting. The connection to the outdoor Learning Plaza is heightened by the large glass view and exterior stone wall with reading nooks.



Library: View to Interior

Flexible furniture provides a variety of individual and group spaces within the Library. Large amount of glazing provides interior views to the 2-story Learning Community and outdoor Learning Courtyard beyond.



Main Corridor at Learning Communities:

Students, teachers and parents are invited to flex zones and collaborative areas along the main circulation path with views to outdoor. Color is used as wayfinding for the 2-story grade level wings.



Dining Commons + Stage

This multi-purpose area provides space for student dining and large group assembly acoustical softening at stage wall and ceiling areas. The Commons is directly connected to the outdoor Learning Plaza.



Learning Community: Collaboration Space within Classroom Wing

Each Grade Level Classroom Wing has its own Collaboration Space near the Main Corridor for easy supervision. Floor 1 has direct access to courtyard. Floor 2 overlooks into the courtyard.



Learning Community: Classroom View to Corridor

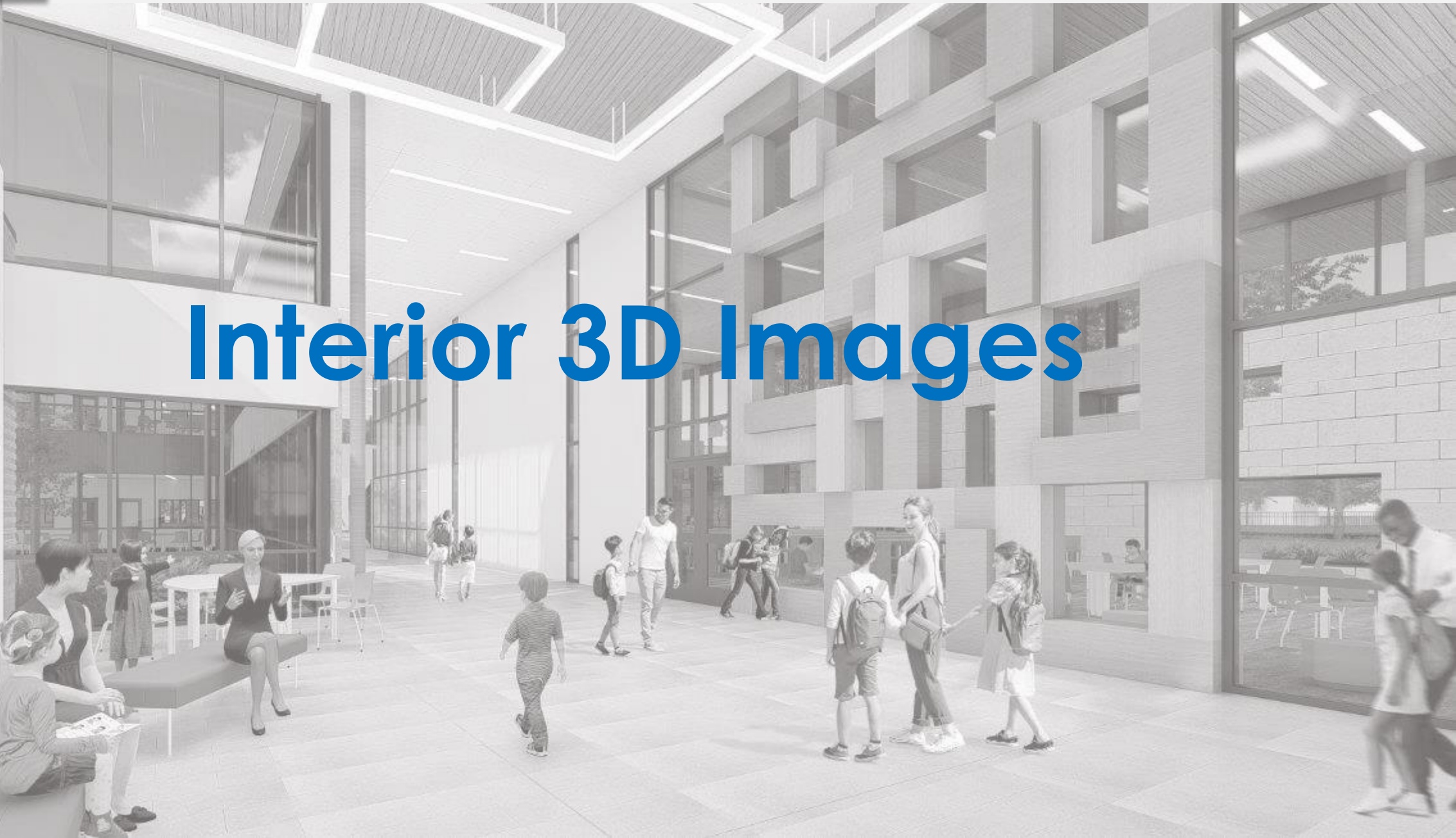
Classroom wall facing the corridor has large view windows for easy supervision of the collaboration space. Flexible student furniture and casework is consistent among grade level classrooms.



Learning Community: Classroom View to Exterior

The presentation wall is located on the entry wall of each classroom. The furniture is flexible and easy to re-arrange for collaborative work. Classroom exterior wall has north/south view windows to the exterior.





Interior 3D Images

*The Bunker Hill ES design creates a **welcoming and inviting approach to the school** with a lower scale at the entry blending into the neighborhood. The building shapes and color tones **reflecting the surrounding natural environment** creates an engaging 21st century learning environment.*





**Thank you to the PAT Committee team members for your engagement!
Your input and feedback has led us to this wonderful proposed design for the new Bunker Hill Elementary School.**



Meeting Agenda:

1. RECAP: Mtg #1 thru Mtg #6

PAT Process: PAT Charge + PAT Engagement Process Overview

PAT Input: Design Vision + Educational Vision + Guiding Principles

PAT Voting Results: Preliminary Exterior + Interior Design

2. PAT Mtg #7 Focus: Review Current Status of BHE Design

PAT Information = Site + Floor Plan

PAT Engagement = Q/A + Feedback

PAT Information = Exterior Renderings

PAT Engagement = Q/A + Feedback

PAT Information = Interior Renderings

PAT Engagement = Q/A + Feedback

PAT Engagement = Seek Consensus on BHE Design

NEXT STEP

3. Next PAT = August 25th - CD Update