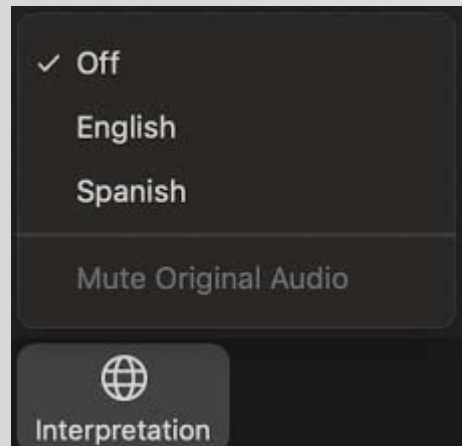




In Person ORIENTATION

March 29, 2021

Haga clic en interpretación para la traducción al español.



AGENDA

1. Expectations
2. Safety
3. Instruction
4. Screening Protocol/Drop Off & Pick Up
5. Passing Protocol
6. PE/Band/Sports

Welcome and Introductions

Congratulations as we're finally at the stage of welcoming students back to campus!

Ms. Del Bono, Principal

Ms. Dimas, Assistant

EMPOWER

◆ **Work Hard!** ◆ **Be Kind!** ◆ **Success is NO Accident!** ◆



◆ **Enthusiasm** ◆ **Mindfulness** ◆ **Perseverance** ◆ **Ownership** ◆ **Work Ethic** ◆ **Equity**
◆ **Rigor** ◆ **Enthusiasm** ◆ **Mindfulness** ◆ **Perseverance** ◆ **Ownership** ◆ **Work Ethic** ◆ **Equity**

01.

Expectations



Returning Is a Choice

- ❖ You are choosing to prioritize safety.
- ❖ You are choosing to prioritize learning by maximizing instructional time.
- ❖ You are choosing to help make it work for everyone to ensure it's a positive experience.

Survey Results

All stakeholders prioritized needs for in-person in this order:

1. Safety
2. Learning Needs
3. Socializing to Promote Mental Health

02.

Safety



To Stay Safe, We Will...

- ❖ Screen daily to promote greater awareness of symptoms
- ❖ Stay home when exhibiting symptoms
- ❖ Wear masks properly on campus
- ❖ Wash our hands prior to the 1st period of the day
- ❖ Wash our hands/use hand sanitizer when entering class
- ❖ Maintain 3ft social distancing outside
- ❖ Move through the campus using a one-way pattern
- ❖ Position desks between 4-6 ft apart in the classroom
- ❖ Tell an adult or utilize the STOP IT app to report any concerns regarding unsafe practices

Progressive Measures to Ensure Safety

- ◆ We will teach the expectations.

Properly Wearing A Mask & Handwashing

Additional videos will be shared by the end of the week.

- ◆ We will reinforce the expectations daily.

What Is The Impact

- ◆ Ms. Del Bono and Ms. Dimas will address each issue compromising the safety of students and staff.
- ◆ We have (7) weeks of instruction to enjoy this on-campus environment- Let's make it work!
- ◆ ***If an individual can not prioritize safety, they will return to distance learning.***

If COVID Symptoms Occur?

All guidance regarding isolation, quarantining, and returning will be filtered by Murphy through Noel Weeks as she is the coordinator with County Public Health)

- ❖ Students will need to get tested or provide a note from medical provider after they develop one or more COVID-19 symptoms OR if one of their household members or non-household close contacts tested positive for COVID-19.

Positive COVID Test Results?

- ❖ Parents/guardians must notify school immediately if the student tested positive for COVID-19 or if one of their household members or non-household close contacts tested positive for COVID-19.
 - ❑ Upon receiving notification that a student has tested positive for COVID-19 or been in close contact with a COVID-19 case, Murphy will contact Noel Weeks or Human Resources IMMEDIATELY.
 - ❑ Students will resume distance learning if quarantine is required
- ❖ Students who test positive and have completed isolation requirements as recommended by COVID Coordinator Noel Weeks, do not require a medical note or a negative test prior to returning to school/work.

Negative Test Results

- ❖ Symptomatic individuals who are not close contacts and who test negative for COVID-19 can return to in-person school after at least 24 hours from fever resolution (if any) and improvement in other symptoms.
- ❖ Close contacts to a COVID-19 case who test negative can return to in-person school/work only after completion of 14 days of quarantine from last exposure.

Isolation Tent

Students suspected (exhibiting symptoms) or confirmed cases of COVID-19 on campus will be supported in our isolation tent outside the health office. **Parents/guardians will be notified and required to pick up their student within 30 minutes upon notification.** *Please establish a system to ensure that this can occur if needed.*

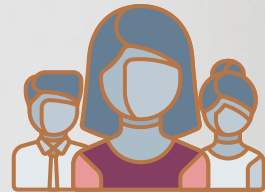
Murphy Stands Against Hate, Racism, and Bullying

To further EMPOWER our students and families as allies, join us for a brief, yet powerful presentation on Thursday April 1st from 5-5:30pm

[Link to join Webinar](#)

03.

Instruction



In-Person Instruction

- ❖ In-person students will be required to bring their Chromebook to school fully-charged daily.
- ❖ The “classroom” will combine in-person students with distance learner students simultaneously. They will be partnered during class. The only exception is PE.
- ❖ Google Classroom and Zoom will be constant.

How Will My Child Get Extra Support?

- ❖ Students will need to ask for help
- ❖ The teacher will be able to better gauge a student's understanding in person
- ❖ Patience will be needed- this is a new process of simultaneous instruction

How Will My Child Get Extra Support?

- ❖ Tutorial is structured for support.
- ❖ Office Hours are still available and encouraged.
- ❖ Cal-SOAP tutoring available M/T/W/TH/Sat.
- ❖ Contact our Counseling Team.

Tutorial and Asynchronous

- ❖ Students have been informed about the processes for both these days.
- ❖ Students will have ample time to get home, eat, and log in for Tutorial
- ❖ Attendance will be taken in Tutorial and Asynchronous Wednesday-determined by work completion
- ❖ Extra support with submitting assignments is available. Email Ms. King (7th & 8th) or Mr. Makhoul (6th).
- ❖ Attendance = Communication to you.

04.

Screening/Drop Off/Pick UP



No student, staff, or approved visitor shall enter campus if they have any COVID-19 symptoms, including:

- ☐ Fever or chills
- ☐ Cough
- ☐ Shortness of breath or difficulty breathing
- ☐ Fatigue
- ☐ Muscle or body aches
- ☐ Headache
- ☐ Sore throat
- ☐ Loss of taste or smell
- ☐ Nausea/vomiting or diarrhea.

Daily Screening

If symptoms occur, contact Jenni Burkholder at burkholderj@mhusd in the Attendance office to report that you will be participating via distance learning (DL). *This is not considered an absence as long as students participate in DL.* Teachers will be notified.

Screening Flowchart



**Temp
Check**



**Wash
Hands**

1

2

3

4

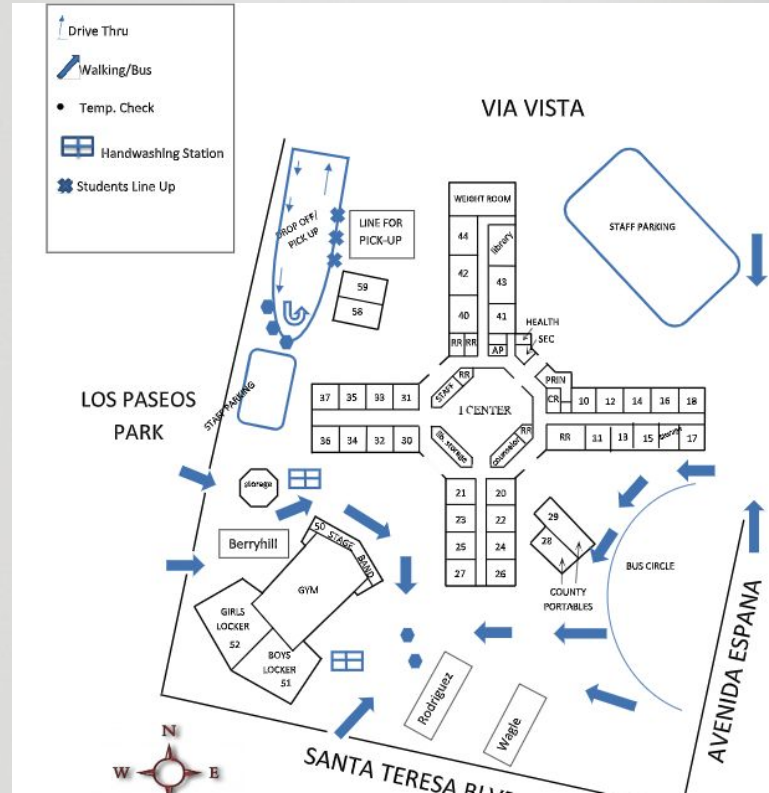
**Symptom
Check**



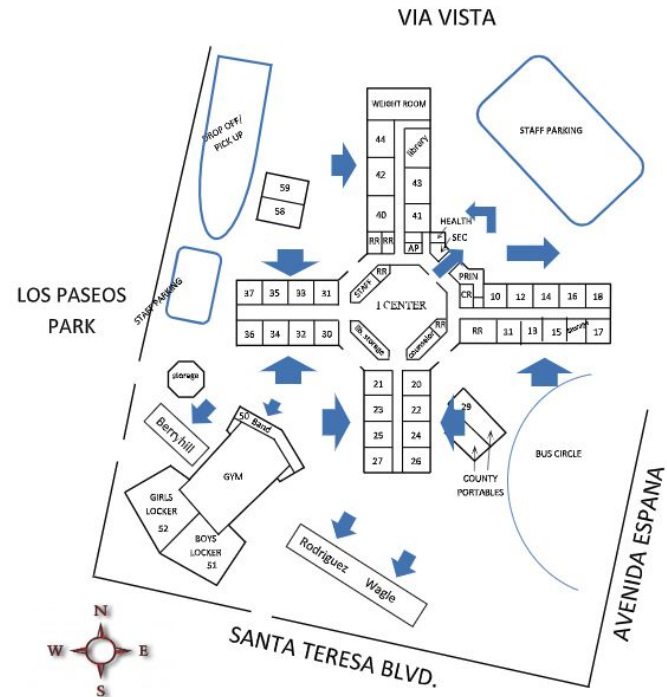
Bracelet



- ❖ At 8:45am we will begin the screening process for students arriving by car, bus, and walkers
- ❖ (3) screeners will support students dropped off by car at the drop off/pick up area to expedite the process
- ❖ (2) screeners will support the walkers and bus riders near the gym
- ❖ Cross walking guards will be present on April 12th



- ❖ At 9:15 am students may enter the classroom from the outside door.
- ❖ Rms. 41, 12, 14, & 16 will enter the main building, exit the front doors to enter classrooms from the outside.

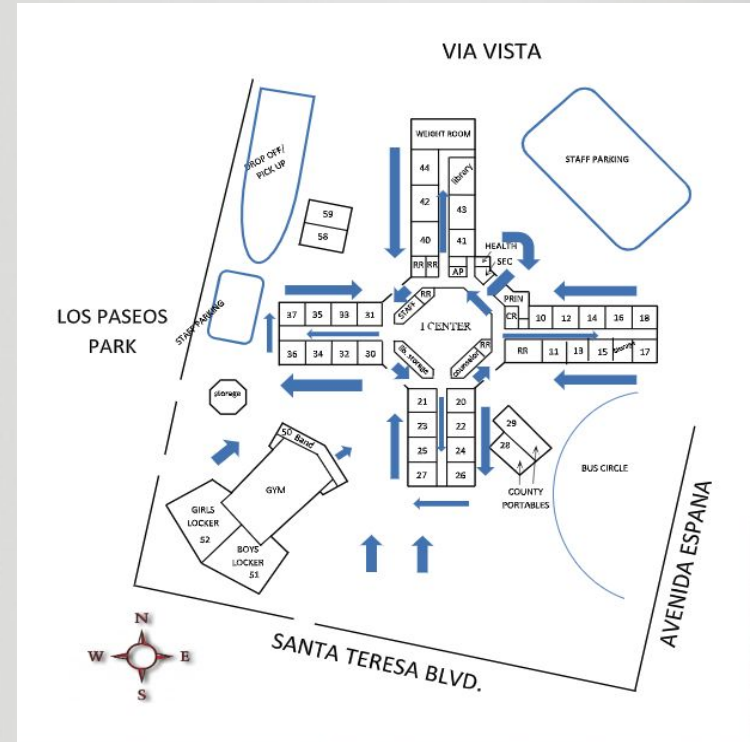


05.

Passing Protocol



- ❖ Students will exit through the exterior door and move to the right
- ❖ Move to the right when entering the building
- ❖ Arrows indicate the directions
- ❖ Enter hallways and enter classroom from the interior
- ❖ It's a movement break!
- ❖ Bathrooms will be open



06.

PE/Band/Sports



- ❖ Locker rooms are closed
- ❖ Dress out on PE days



Band

- ❖ Enter from the stage
- ❖ Bring your instrument



Sports

❖ YMCA



❖ Track & Field

Transportation/Routes



Click here to apply for bus
passes and free and reduced
lunches for the 2021/2022 school year

Saturday, April 10th

The campus will be
open from 10-Noon for
you!



Thank You for Joining Us

Please find this presentation and lots of other resources on our website.

<https://martinmurphy.mhusd.org/>

Questions:

Ms. Del Bono:

Delbonoj@mhusd.org

Ms. Dimas:

Dimasa@mhusd.org

[SIGN IN LINK](#)