



FOLLOW DR. K /DRK_ISD624

ISD624.ORG

Looking back

It is hard to believe that it's only a year ago this month that our students left for Spring Break 2020... and didn't come back to the classroom for learning until six months later, at the start of the next school year. Conversely, it also seems like it was just yesterday.

In the 12 months that have passed since the fateful March that seemingly came in like lamb and went out like a lion, we have had much to overcome and many successes to celebrate as a school community.

Our students quickly adjusted last spring to emergency distance learning, with teachers turning on a dime to create lesson plans to keep students engaged and growing in a model that was new to everybody. Other staff members got to work as well, providing Tier 1 childcare to essential workers, preparing and distributing free meals to students throughout the district, and providing technology and learning support for students and families alike. Recognizing that specialized assistance would be necessary in the uncertain time, initiatives such as the Support Hub, Free Bear Care Health & Wellness Clinic, and Free Bear Care Mental Wellness Support Line were born. The programs will continue serving students and families for a long time to come.

Summertime brought a new list of traditions and celebrations that were changed or altogether canceled, as the community took a break from Marketfest fun and learned new ways to socially distance in line at Cup and Cone.

Continued on District News page VII

Translations:

Para Español por favor llame al 651-407-7625

Xav tau ntawv Hmoob hu rau 651-407-7623

Flip book to see
Community Services &
Recreation Catalog



In this issue

- » **TEACHER OF THE YEAR NOMINEES**
Accomplishments, Page II
- » **KINDERGARTEN ENROLLMENT**
School News, Page III
- » **SCHOOL BOARD STUDENT RECOGNITION**
District News, Page V
- » **IMPORTANT DATES**
Upcoming Events, Page VIII

Non-Profit Org
US Postage
PAID
St. Paul, MN
Permit #183

District receives DLI Youth Skills Training Grant

The White Bear Lake Area Schools Career Pathways & and the Automotive Career Pathway are Round 4 recipients of the MN DLI Youth Skills Training grant for \$100,000. The 2021 Youth Skills Training grants announced in February are part of a Minnesota Department of Labor and Industry's Youth Skills Training (YST@DLI) program. White Bear's grant is one of only eleven recently distributed throughout the state, funding development and implementation of paid-learning opportunities for students 16 years of age and older.

2021-22 Teacher of the Year nominees

The WBLAE Teacher of the Year committee recognized the 600+ educators of White Bear Lake Area Educators, Local #7286 as this year's Honorary Teachers of the Year (2020-21) for their extraordinary dedication to students and families during emergency distance learning this past spring and their efforts this school year.

The 2021-22 class of nominees includes new honorees and all nominees who submitted teacher surveys as part of the 2020-21 selection process.

Eligible nominees now have the opportunity to submit written responses to a series of questions regarding teaching and learning and their personal educational philosophies. From those responses, six finalists will be selected to interview with members of the community, administration and their fellow teachers.



White Bear Lake Area
EDUCATORS
Local #7286

Area Learning Center

Ben Craig

Birch Lake

Kathleen Elletson
Lucinda Ethen
Adriana Kolodny*
Taylor Nelson
Summer Parzyck
Gina Prescott-
Harmon
Julie Skildum
Kari Solheim
Jenny Storhaug
Megan Wells

Central

Josh Bilskemper
Tracy Blodgett*
Rachel Garcia
Kristie Holman
Pamela Johnstone**
Amy Jorgenson
Jesse Maloney
Karlie Myette
Katie Nohr
Carrie Reisdorfer
Timothy Sager
Molly Vadnais

Hugo

Sean Johnson
Mary Maloy
Lakeaires
Kelly Humphrey
Paige Kazak
Nancy Krocak
Nicholas Marty**
Beth Olson

Lincoln

Teri Beckers
Becky Butters
Brenda Heaton
Traci Indlecoffer
Abby Kath**
Alleks Kornbaum
Jamie Kovacs
Anna Levins
Josh Maloy
Teresa Ogden
Emily Scanlon
Leah Sitka
Nancy Thom

Matoska

Jody Eastburn
Kendall Gonzalez
Kim Jeske-Walfoort
Alyssa Larson
Heidi Lilla
Jeanne Mack
Dawn Maple
Ananth Pai

Matoska cont.

Ashley Peterson
Jennifer Reckinger
Kyra Scanlan
Shannon Sullivan
Sarah Treanor

Normandy Park

Denise Deen
Martha Norton

North Campus

Omar Ali
Ryan Brown
Colleen Cameron*
Arthur Crutch
Mark Domschot
Julie Fulton
Faith Hagestuen
Caleb Hardacre
Katelin Held
Hannah Hensley
Ben Kirkham
Katie Manley
Tyler McCormick
Chad O'Leary
Joshua Lehr
Jonathan Pratt
Kari Reed
Daniel Rossiter
Eliza Snortland*
Erin Synan
Joanna Trudgeon
Amanda Vernon

NC cont.

Tony Walfoort**
John Weisbrod
Tim Whalen
Melissa Wickert
Hui Xu*

Oneka

Kathy Berlin
Maggie Clark**
Amy Corner
Joan Haug
Katie Solem
Greta Thun
Elizabeth Ulmer

Otter Lake

Aimee Eriksen
Emily Gallatin
Shaun Hocking
Erika Jagiella
Jennifer Misgen
Denise Ryan*
Mary Vanden Berg

South Campus

Robert Anderson*
Stacey Bacigalupo
Barbara Bursack
Leroux
Alexander Carlson
Jim Christensen**
Kerry Feirn
Anne Hittesdorf

SC cont.

Dustin Holman*
Brietta Hutson
Stephanie Kerbage
Cassandra Knutson
Lindsay Lamwers
Joshua Lane
Wendy Suoja**
Troy Strand
Philip Wacker**
Sunrise Park
Cheryl Bertelsen
Emily Biske
Kirk Gednalske
Huy Nguyen
Megan Perry
Brett Shand
Phil Sundblad
Todd Weinhold

Vadnais Heights

Barb Bliss
Marissa Lane
Nancy Jones
Rachael Lapinski
Lai Lau
Angie Rider

Willow Lane

Debra Hibbard
Elizabeth Lilja
Shane Whalen

*Indicates the individual teaches in multiple buildings

**Indicates former WBLAE Teacher of the Year

Kindergarten enrollment

The district is currently accepting kindergarten enrollments for the 2021-22 school year. Families may register their Class of 2034 student by completing the online enrollment process or by filling out a kindergarten enrollment packet available at any district elementary building or the Centralized Enrollment Office at District Center.



We have something to send your way after you've enrolled your incoming kindergartner.

Get your "I'm a Bear" t-shirt!



Find online enrollment or paper enrollment packets at www.isd624.org/Kindergarten.

Questions? Contact our Centralized Enrollment Office at 651-407-7674 or any of our elementary school offices (contacts on reverse).

Why Be a Bear?

The District's elementary program offers:

- Safe, nurturing and challenging environments.
- Differentiated literacy and math instruction.
- Hands-on learning.
- World language experiences.
- Focus on academic, social and personal development of all students.



White Bear Lake Area Schools

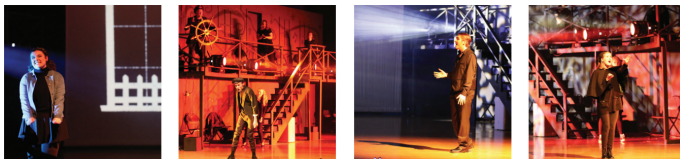
isd624.org/Kindergarten



"Songs for a New World" WBLAHS musical

The WBLAHS Fall Musical "Songs for a New World" is now available as a rent-to-view video performance. The musical, which is generally delivered each year in a packed theater to a live audience, was delivered in a virtual fashion this year due to the pandemic.

The rental functions just like renting a movie from Amazon Prime Video and other VOD Streaming Services. The movie can be found, rented, and viewed from our ShowTix4U Box Office. Find additional information about the opportunity at <https://sites.google.com/isd624.org/musical-theatre/sfanw>.



District launches Elementary Distance Learning Academy

When elementary students returned to in-person learning in January, White Bear Lake Area Schools launched an Elementary Distance Learning Academy to offer a distance learning option to families who chose to remain in that learning model.

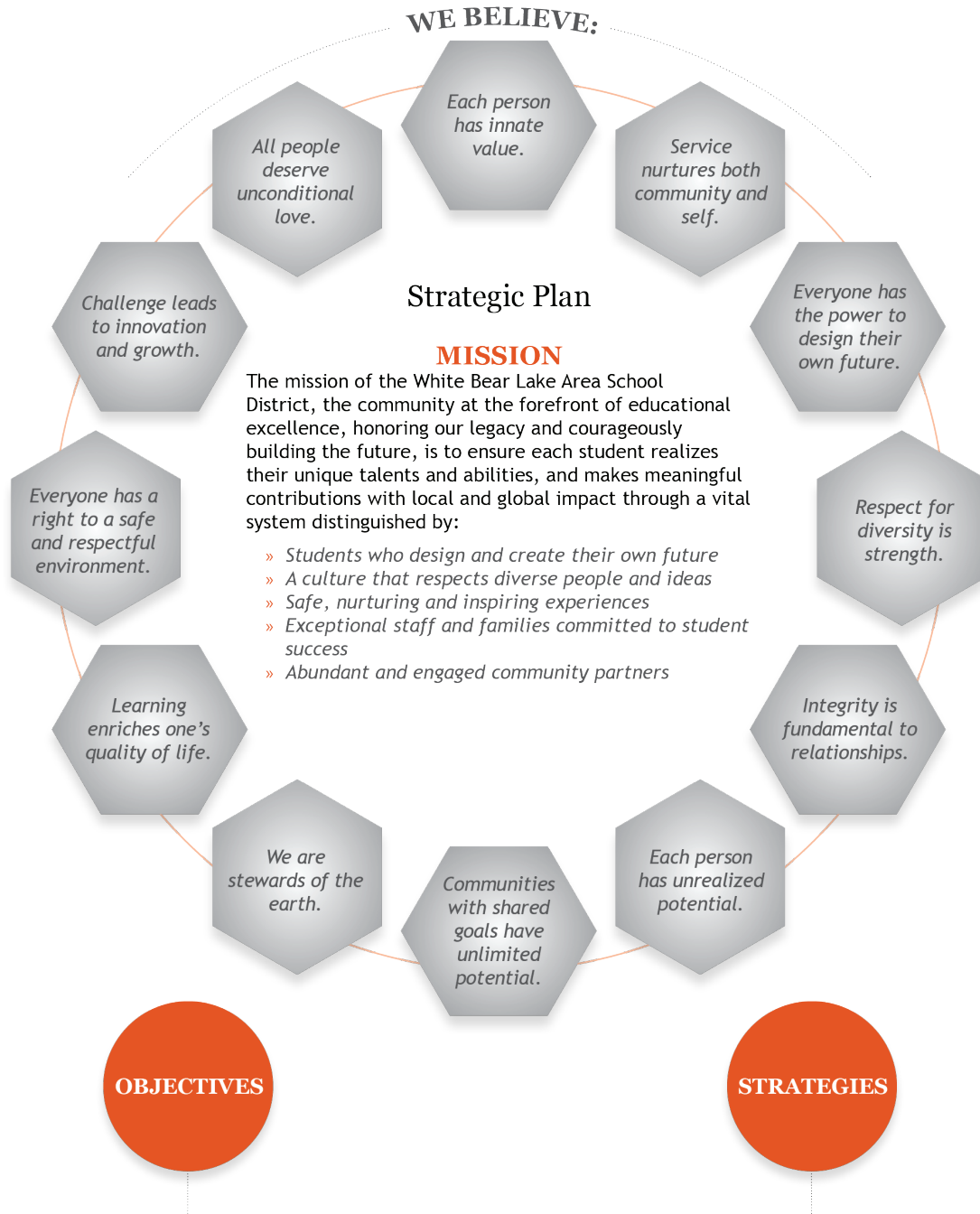
Students in the district's Elementary Distance Learning Academy attend school online each day and work with their teachers to complete learning activities specifically designed for their grade level. Students learn the same concepts and curriculum as their in-school counterparts, but the delivery is adapted to help students succeed in an online environment.

The Elementary Distance Learning Academy is taught by district teachers, aligned with the district's curriculum and Minnesota state standards, and designed to meet the same high levels of academic rigor present in traditional in-person school.

Amber Walsh, who previously served as dean at Central Middle School and has prior experience as an elementary principal, serves as the Distance Learning Academy principal.

When the middle school and high school level recently returned to offering in-person learning, distance learning continued to be an option for families who choose that learning model for their student.

MISSION & STRATEGIC PLAN



Each student meaningfully contributes to community.

100% OF STUDENTS:

- feel valued.
- accomplish their personalized learning plan.
- are prepared for and implement their design for their future.
- graduate.
- creatively adapt to an ever-changing world.

WE WILL:

- ensure that each student is the primary agent in their learning.
- provide expanding access to a broad range of opportunities for all students.
- foster community engagement and partnerships.
- build organizational capacity.
- embrace all cultures with humility and respect.
- ensure learning environments enhance students' educational experience.
- engage families as partners in the education of their children.
- ensure the social and emotional growth of each student.
- imagine new concepts in learning and teaching at White Bear Lake Area High School.

2020-21 District 624 School Board



SCOTT ARCAND
scott.arcand@isd624.org
 Term expires 12/31/23



DEB BELOYED
deb.beloyed@isd624.org
 Term expires 12/31/21



KIM CHAPMAN
kim.chapman@isd624.org
 Term expires 12/31/21



JESSICA ELLISON
jessica.ellison@isd624.org
 Term expires 12/31/21



DON MULLIN
don.mullin@isd624.org
 Term expires 12/31/21



MARGE NEWMASER
margaret.newmaster@isd624.org
 Term expires 12/31/23



ANGELA THOMPSON
angela.thompson@isd624.org
 Term expires 12/31/23

GENERAL SCHOOL BOARD EMAIL ADDRESS:
schoolboard@isd624.org

2020-21 STUDENT REPRESENTATIVES:

- Jennifer Adams, Gr 12, WBLAHS-South, Representative
- Bemnet Tessema, Gr 11, WBLAHS-South, Alternate Representative

School Board Meetings

- Apr 12.....Regular Mtng
- Apr 26.....Work Session
- May 10.....Regular Mtng
- May 24.....Work Session
- June 14.....Regular Mtng
- July 12.....Regular Mtng
- Aug 9.....Regular Mtng

- » All Board meetings through the remainder of the 2020-21 academic year will begin at 5:30 p.m. and will be viewable via electronic means. Find information on the district's online calendar at isd624.org.
- » Agendas, Board Packets, Minutes, Highlights and Video links are posted on the District's website as they become available.
- » Regular School Board meetings are re-broadcast on Cable Channel 20 in the local viewing area the week of a regular business meeting:
 - Wed at 7 p.m. & 11 p.m.
 - Thurs at 10 a.m.

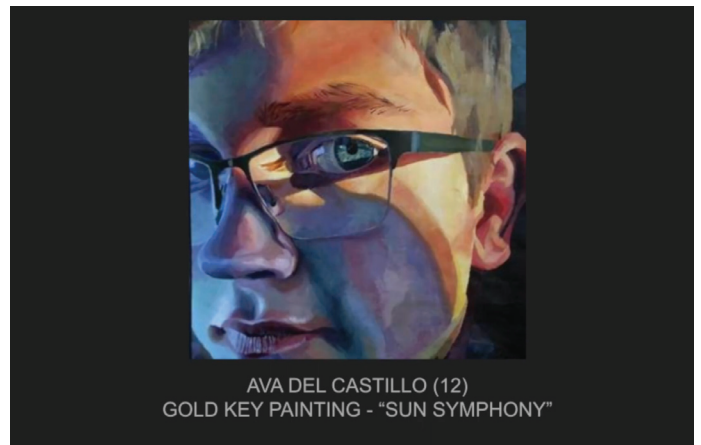
School Board Student Recognitions

White Bear Lake Area Schools Student Recognition Ceremonies honoring students for state- and national-level honors have traditionally taken place prior to School Board meetings. The initiative has recently received a facelift, with students being honored in a prepared video that is shared during Regular School Board meetings.

The videos are also shared in various ways throughout the district after the initial Board meeting viewing. The certificates and Bear pins traditionally awarded in-person are delivered to students at school or by mail.

At the March 1, 2021 School Board meeting, district middle school and high school students were recognized for 2021 Scholastic Art Awards honors.

Students who were recognized in the inaugural Student Recognition video include: Lynn Fastner, Ava Del Castillo, Mia Binsfeld, Margaret Petersen, Celia Fuhrman, Astrid Scharff, and Morgan Holmstrom.



The recognition video, complete with images of the students' award-winning artwork, can be found at <https://youtu.be/5u563WB5UyY>



Stay Connected

E-NEWSLETTER

The Community e-Newsletter is sent out each week, with alternating text and video editions. The text editions cover student and staff successes, school and Community Education offerings, and School Board proceedings. Those who wish to be added to the Community e-Newsletter list may contact us at communications@isd624.org.

STAY SOCIAL

Join White Bear Lake Area Schools' social media circles - Facebook, Twitter and YouTube for daily *624 Fact* posts and *The Week in 62.4 Seconds* video share-outs.

Find links on the District's website.



Early Childhood Screening - Screen at 3

Early Childhood Screening is a free and simple check of how your child is growing, developing and learning. Screening at age 3 is preferred, but a child may be screened between ages 3 and the start of kindergarten as required by law.

The White Bear Lake Area School District provides this screening at no charge.

3 REASONS TO SCREEN AT 3:

- Screening can ensure school success
- If health or developmental concerns are identified, educational services are available
- It is fun and provides parents/guardians with valuable information regarding child development

Register online at <https://whitebear.ce.eleyo.com> or 651-653-3100

Early Childhood Screening takes place at Normandy Park Education Center (2482 East County Road F, White Bear Lake, MN 55110).

Find information and a video describing the Importance of Screening at Three at <https://earlychildhood.isd624.org/programs/screenings>



The Importance of Screening at 3



Digital Backpack

The Community Services Department distributes electronic flyers on the 1st and 3rd Thursday of each month. Flyers include announcements from the school district, as well as local organizations that offer opportunities for youth.

Find the link to the Digital Backpack on the Community Services & Rec website at communityservices.isd624.org/

School Community Core Values

<p>Building quality lives and strong communities through our community core values</p> <p>COMPASSION</p>  <p>White Bear Lake Area Schools</p>	<p>Building quality lives and strong communities through our community core values</p> <p>INTEGRITY</p>  <p>White Bear Lake Area Schools</p>	<p>Building quality lives and strong communities through our community core values</p> <p>RESPECT</p>  <p>White Bear Lake Area Schools</p>	<p>Building quality lives and strong communities through our community core values</p> <p>RESPONSIBILITY</p>  <p>White Bear Lake Area Schools</p>	<p>Building quality lives and strong communities through our community core values</p> <p>SERVICE</p>  <p>White Bear Lake Area Schools</p>
---	--	---	---	--

Continued from front page

The summer months also saw our staff members preparing for a school year that we weren't able to fully envision with all of the lingering unknowns.

Beginning the 2020-21 school year in September in a hybrid format, with some choosing distance learning, students and teachers got used to these new experiences while learning and making connections in new ways. When switches to the learning model have happened in the months since, our students, staff and families have pivoted to adjust to the environment and make the most of the situation. The agency, creativity and perseverance shown by our students when facing this unusual, unpredictable year have been remarkable and are certainly worth celebrating.

The same characteristics have also been on display in our families, staff and community members during these months. Adults have reached out to support students in various ways, whether they be drive-thru student celebrations, offers to provide free food pick-ups for neighbors, or general messages of support for students. The community has come together to recognize the impact the pandemic has had on students and families, and community members have modeled for our learners what it means to pull together for the greater good.

And so here we are at this one year anniversary of our collective COVID-19 journey. Although things seem to be looking up, we do still have more questions than answers for what the next weeks and months will bring. What we do not question, however, is our students' ability to overcome challenges - or the incredible amount of support they will receive from the school and broader community on their path to success.

Thank you for your part in helping our school community weather the unforgettable last 12 months.

Dr. Wayne A. Kazmierczak
Superintendent of White Bear Lake Area Schools



SUPPORT HUB

We know that connections and relationships are an important part of our students' educational experiences, and we remain committed to the social emotional well-being of those in our school community.

The District launched a Support Hub last spring in order to provide families with resources to address barriers & enhance well-being.

This comprehensive resource gives families and community members access to information for essential services including crisis response, basic needs, mental health and well-being, physical health, social emotional learning and more.

The button can be found linked on the front page of the White Bear Lake Area School District's website, isd624.org.

Cultural Liaisons

The district's cultural liaisons work with students, families, and staff throughout the district to increase student and parent engagement with various programs and district activities.

The district's Equity and Engagement Department offers support to students and families through our cultural liaisons, the district's Equity Action Plan, our Equity Commitment, and the district's American Education Program.

Information about all of these programs can be found at the district's website, isd624.org/departments/equity-engagement



MILES WEBB SR.
African American Liaison
miles.webb@isd624.org



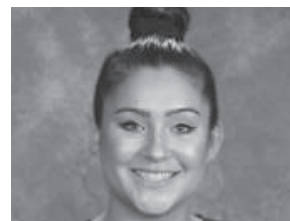
AMY OTTAVIANI
Early Childhood Latino Liaison
amy.ottaviani@isd624.org



BRIANA SANTOSCOY
K-12 Latino Liaison
Student, Family, Community Engagement Coordinator
briana.santoscoy@isd624.org



NIRVANA YANG
Hmong & Asian Amer. Liaison
nirvana.yang@isd624.org



JORDAN ZICKERMANN
Native American Liaison
jordan.zickermann@isd624.org

Coffee with Dr. K

Community members are invited to mark their calendars to join Superintendent Kazmierczak for an informal chat over a cup of coffee from 4:30-5:30 p.m. on April 6. Find details on the district's online calendar the week prior to the event.



Send Us Your Bear Wear Pics!

We are looking for photos of little ones in their Bear Wear!

Email photos to communications@isd624.org and you may find your little one(s) featured in a District publication.

The "Born to be a Bear" onesies are sent along with Early Childhood information to all families who live in the district upon the arrival of a little one. "I'm a Bear" t-shirts accompany Screen at 3 information sent to households with toddlers. Incoming kindergartners receive kid-sized "I'm a Bear" t-shirts once they are officially enrolled in the district.



Important Dates

- » **APRIL 6**
COFFEE WITH DR. K
(COMMUNITY EVENT)
4:30-5:30 p.m.
- » **APRIL 12**
SCHOOL BOARD REGULAR MEETING
5:30 p.m.
- » **APRIL 26**
SCHOOL BOARD WORK SESSION
5:30 p.m.
- » **MAY 10**
SCHOOL BOARD REGULAR MEETING
5:30 p.m.
- » **MAY 24**
SCHOOL BOARD WORK SESSION
5:30 p.m.
- » **JUNE 14**
SCHOOL BOARD REGULAR MEETING
5:30 p.m.

2021-22 Calendar

The School Board has approved the 2021-22 Academic Calendar, which can be found on the district website Calendar pages and as a News item.

WELCOME TO
WHITE BEAR
2021

Get to know us!

Families are invited to check out our schools. Find information on the district website or contact our schools directly to learn more about being a Bear!

www.isd624.org/Welcome





White Bear Lake Area Schools

Leading minds to learning, hearts to compassion, and lives to community service.

Serving the communities of Birchwood, Gem Lake, Hugo, Lino Lakes, Little Canada, Maplewood, North Oaks, Vadnais Heights, White Bear Lake, and White Bear Township.



OUR MISSION

The mission of the White Bear Lake Area School District, the community at the forefront of educational excellence, honoring our legacy and courageously building the future, is to ensure each student realizes their unique talents and abilities, and makes meaningful contributions with local and global impact through a vital system distinguished by:

- Students who design and create their own future
- A culture that respects diverse people and ideas
- Safe, nurturing, and inspiring experiences
- Exceptional staff and families committed to student success
- Abundant and engaged community partners