

Reopening Our Schools

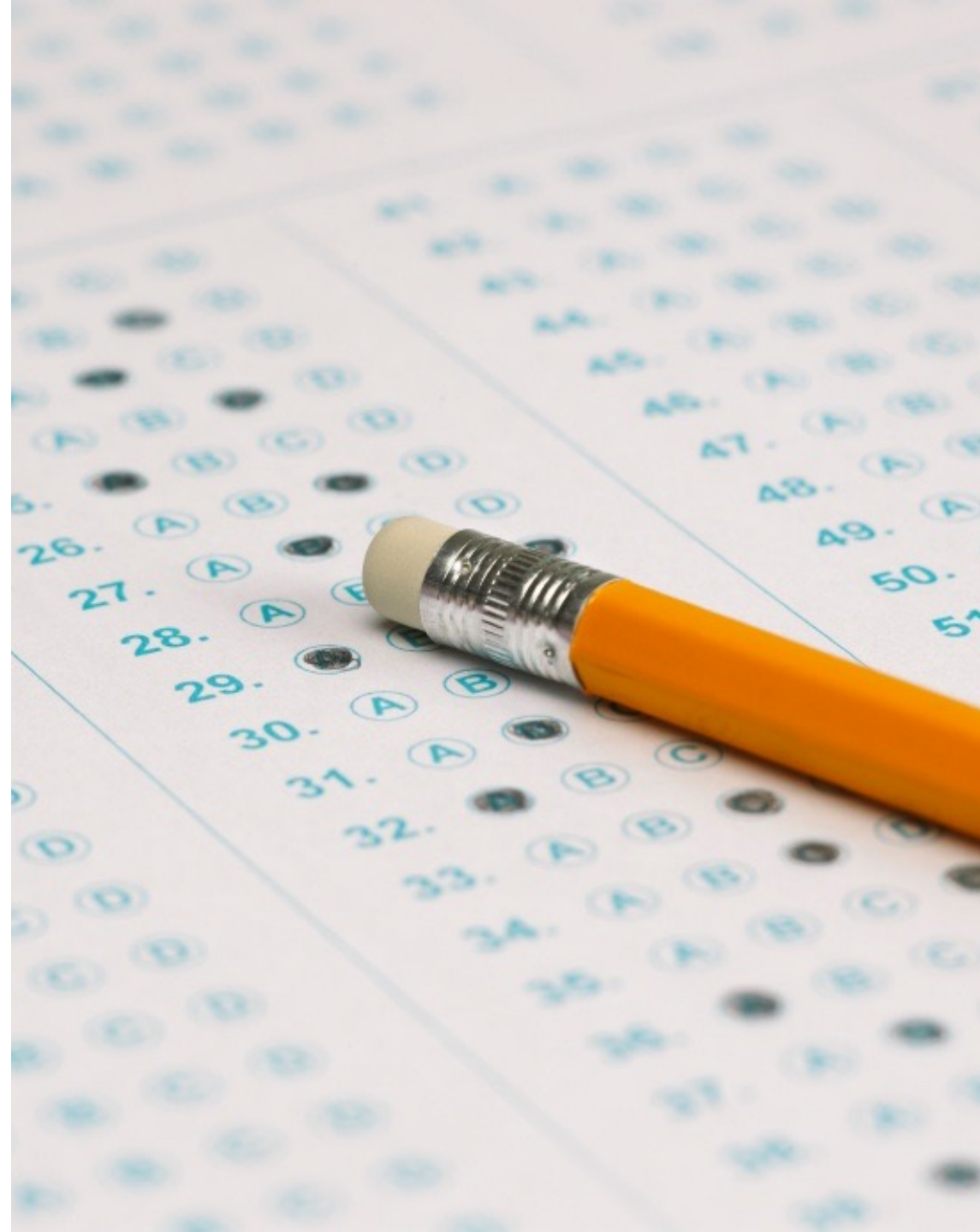


-March 24, 2021-

Testing Update

California State Board of Education (SBE) took action to direct the California Department of Education (CDE) to seek a waiver from the Department of Education (ED) for testing specifically:

- Waive the California Science Test (CAST)
- Extend the testing window to July 30
- Waive federal penalties for less than 95% participation rate
- Decouple state assessments from federal accountability requirements



Testing Update

California State Board of Education (SBE) took action to direct the California Department of Education (CDE) to seek a waiver from the Department of Education (ED) to allow districts to use the best assessment tool available for the local context this spring so long as it:

- Is aligned with California Common Core State Standards for English language arts and math
- Is available to assess students in grades 3-8 and 11
- Is uniformly administered across a grade span, school, and/or district
- Provides results that can be reported to parents/guardians, and educators about individual students, and to the public by school and by district and are disaggregated by student group



FILTERS



Upgrading HVAC Filters

- On all campuses
- Filters made from N95 mask material



PURE & CLEAN



The Aerus Pure & Clean eliminated 99.96% of airborne SARS-CoV-2 virus within 3 minutes in testing done at a FDA-compliant military lab.

HOW IT WORKS

- Our proprietary ActivePure® Technology uses UVC light waves and a catalytic process to produce super oxide molecules and hydro-peroxides that destroy contaminants on surfaces and in the air
- Advanced Active PCO Technology continuously protects and purifies the environment around you

NOTABLE ACTIVEPURE® FACTS

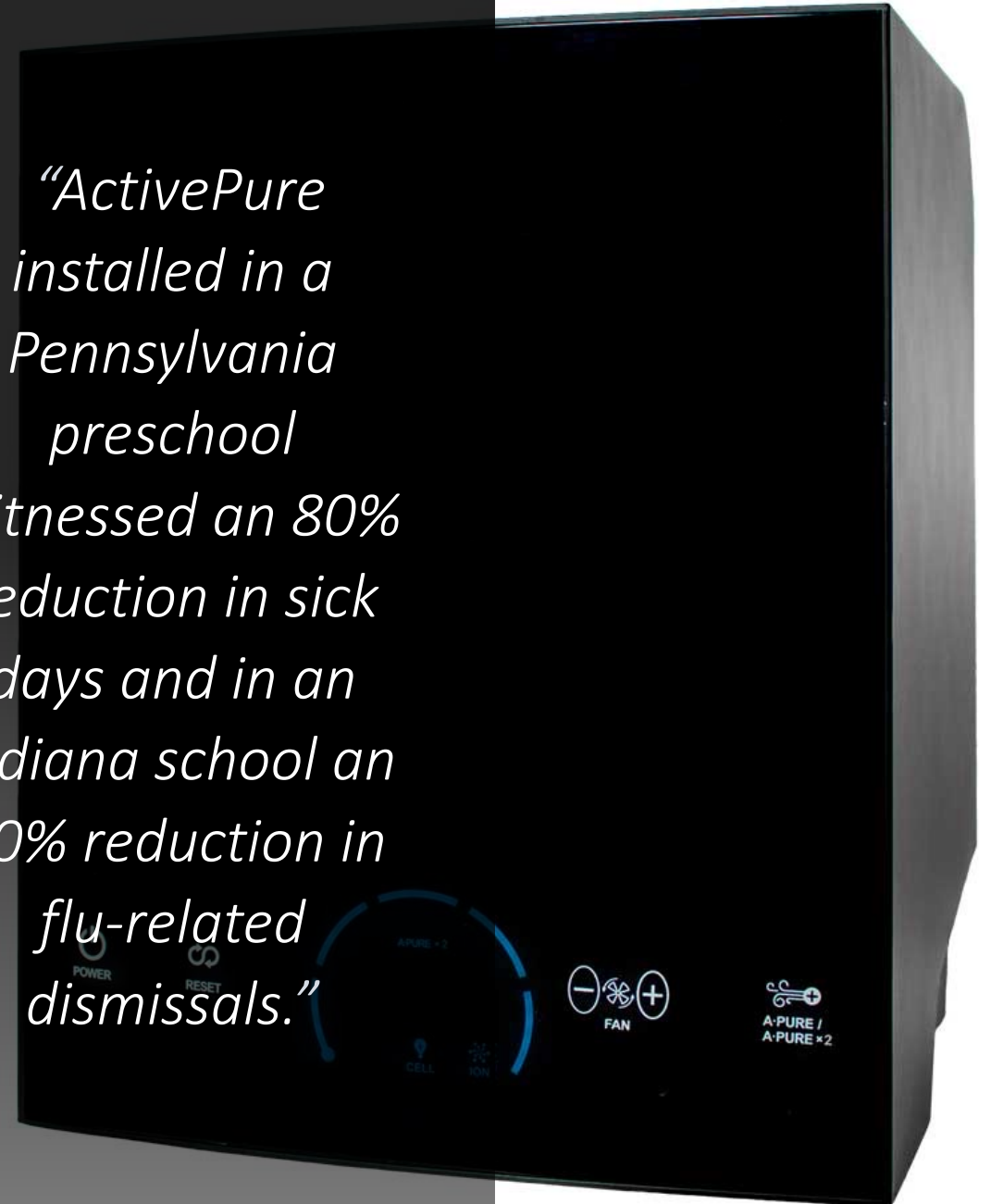
- Used by 29 US Professional Sports Teams and multiple X-games athletes
- Primary technology in a FDA-Cleared Class II Medical Device
- Inducted into the Space Technology Hall of Fame in 2017 and is the only Certified Space Technology product in its class
- Ongoing 2-year double-blind study with the Cleveland Clinic

Active Pure Technology

The Aerus Pure & Clean and Vollara Air & Surface Pro

- Teachers have full control of it
- The unit can be turned off and on
- Serviceable in house
- Replacement is one unit vs. a whole system
- Stand alone units add no stress to our current HVAC systems
- Can be cleaned in between filter changes (filters changed annually)

“ActivePure installed in a Pennsylvania preschool witnessed an 80% reduction in sick days and in an Indiana school an 80% reduction in flu-related dismissals.”



Staying Safe while Supporting Language Acquisition



Signage



ALL STAFF, STUDENTS & VISITORS ARE REQUIRED TO...

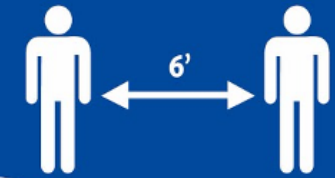
TODO EL PERSONAL, LOS ESTUDIANTES Y LOS VISITANTES ESTÁN OBLIGADOS A...
我们要求全体教职员、学生和到访者都必须做到：



Have your symptoms screened, with temperature check.

Realizarse un examen de detección de síntomas, con toma de temperatura.

您做过症状筛查和体温检测了吗？



Keep a physical distance of 6' between yourself and others.

Mantener una distancia física de 6 pies entre usted y los demás.

在您和他人之间保持6英尺的社交距离。



Stay home if you have Covid-19 symptoms, tested positive, or had contact with someone COVID+.

Quédese en casa si tiene síntomas de COVID-19, ha dado positivo o ha estado en contacto con alguien COVID+.

如果您出现COVID-19的症状，核酸检测阳性，或者和患者有过密切接触，请您居家隔离观察。



Wear a face covering over nose and mouth at all times except when eating or drinking.

Utilice una cobertura facial sobre la nariz y la boca en todo momento, excepto cuando coma o beba.

Requerido para personas mayores de dos años. 除进餐和饮水外，全时佩戴口罩遮盖您的口鼻部位 2岁以上必须执行。



Wash or sanitize your hands frequently.

Lávase o desinfectese las manos con frecuencia.

勤洗手，或者用干洗手液勤消毒。



LACDPH Visits

In anticipation of our reopening, Los Angeles County Department of Public Health has been conducting site visits.

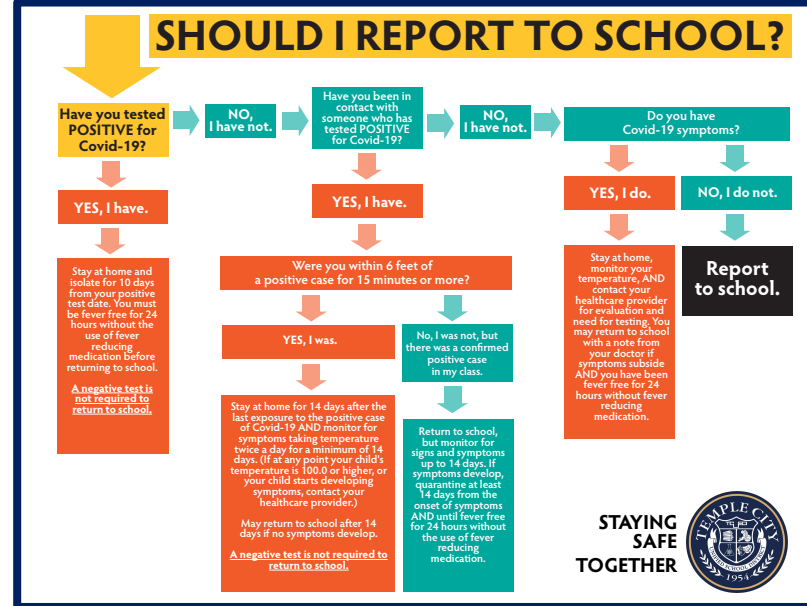
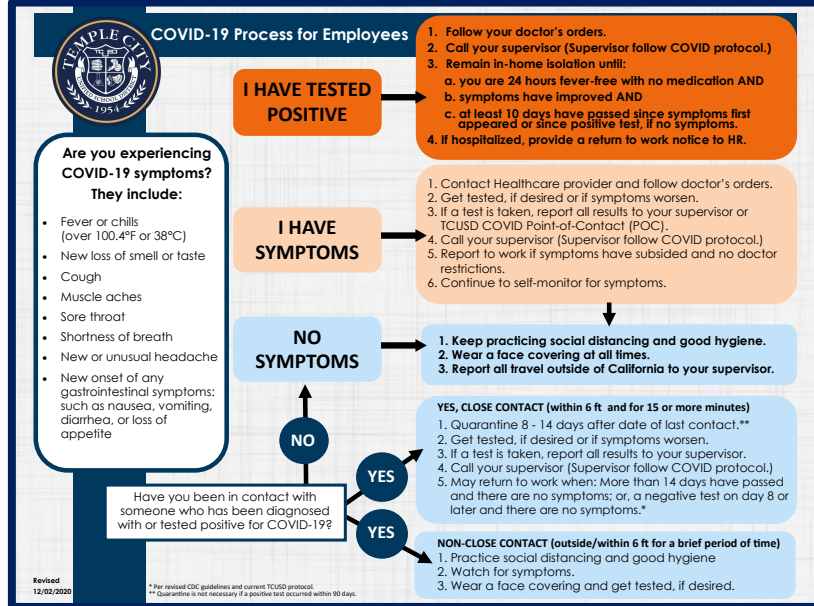
Appendix T1 – Reopening Protocols for K-12 Schools

- Classroom setup/layout
- Screening process
- Mitigation Strategies
- Isolation Tent

Appendix T2 - Protocol for COVID-19 Exposure Management Plan in TK-12 Schools

- Covid-19 Compliance Task Force
- Notification/Communication Process
- Exposure Management for 1, 2, and 3+ cases

Procedures to Prevent COVID Exposures



Temple City Unified School District
A District of Award-Winning Schools

Temple City Unified School District

COVID-19 Health Screening
Daily Self-Screening Form

You must complete and submit this form each day before reporting to campus. If the answer to any of the following questions is YES, you must stay home.

Date: _____

This form applies to:

Student Name	Student Grade	Body Temperature

In the last 14 days, has anyone in your household had close contact with someone who has or is suspected to have COVID-19?

☐ Yes ☐ No

**Employee
Flowchart**

**Student
Flowchart**

**Parent Square Daily
Health Screener**

FACILITIES USE

Governed by LACDPH Appendix T1 Re-Opening of TK-12 Schools Plan

Use of school facilities for non-school purposes (community meetings, events, on-site clinic visits by people who are not students nor staff, etc.) is not permitted.

One exception is the use of outdoor athletic fields by non-school youth sports teams, leagues, or clubs, which is permitted when school is not in session and staff and students are not present.

Navigating a Global Pandemic



December/ January

- Campuses remain closed
- Data from Parent Surveys gathered
- Superintendent Taskforce reconvenes
- Local districts begin announcing distance learning for the remainder of the school year
- PTA Council Meetings



February

- COVID-19 Prevention Program (CPP) – OSHA Guidelines
- CDPH COVID-19 Guidance Checklist
- Met initial February 1st deadline
- Phased in reopening of staff
- Vaccine shortages



March

- Reopening Visits from LACDPH
- Spring parent survey released
- LA County moves to red tier
- Education sector eligible for vaccine
- Reopening Plan presented
- ELP waivers for essential worker childcare at multiple sites submitted

TCUSD

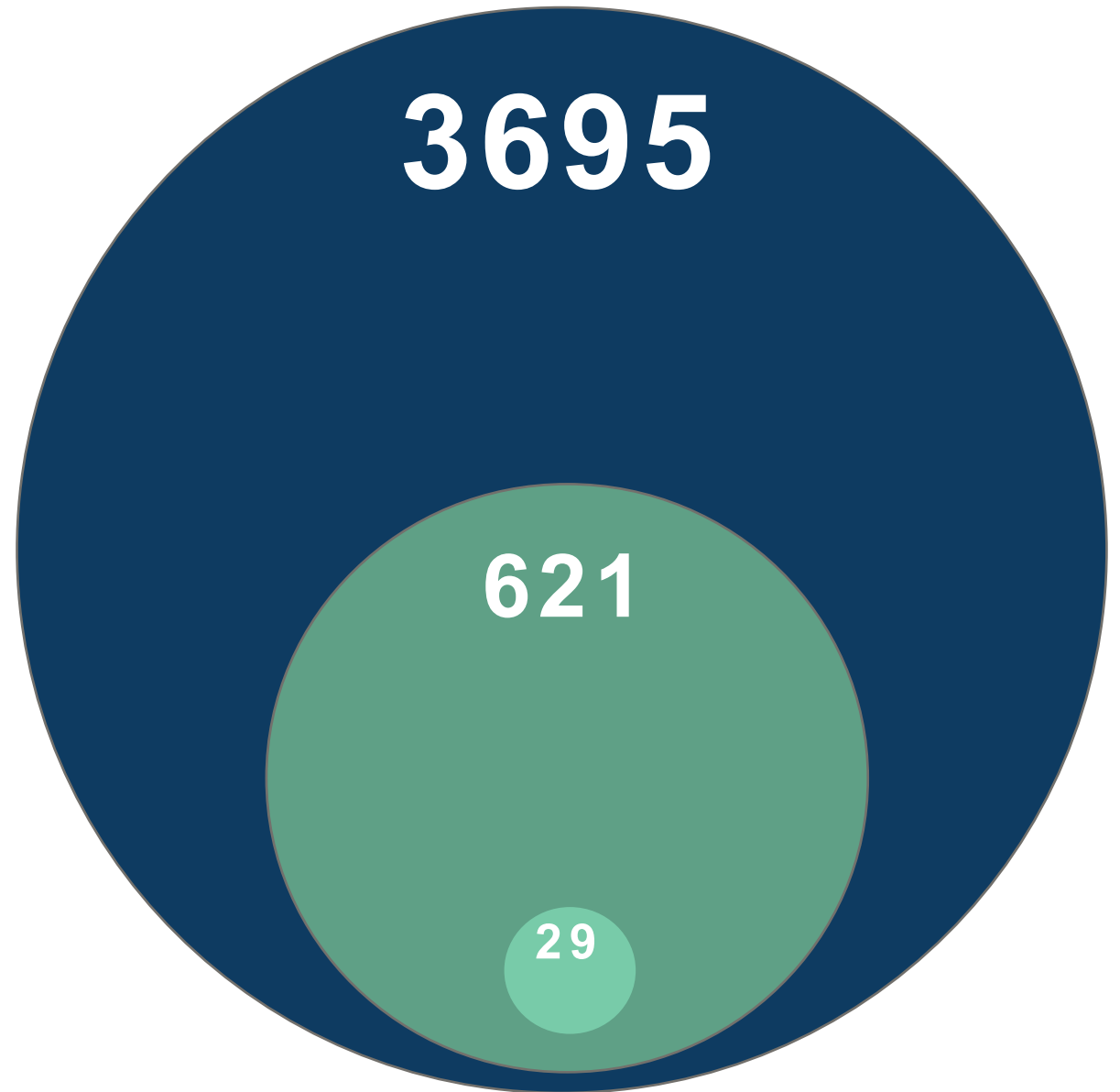
Our Program



- Distance Learning for TK – 6th Grade: 8:00 AM – 11:30 AM; Secondary remains the same
- All grades continue with asynchronous work to meet instructional minute requirement
- All sites have specialized morning cohorts for supervised distance learning
- Afternoon cohorts available for secondary students; all 12th grade students may attend afternoon sessions
- ELP childcare offered to TK- 6th grade for supervision during morning Distance Learning instruction
- Additional ELP childcare offered to TK- 6th grade students for after In-Person Instruction (cost applies)

621 Comments Received

- Combined 50% (311)
Stay Distance Learning/
Not worth the risk/ Grateful the
plan
- Combined 4.7% (29)
Disappointed/Do not like plan



Remaining comments are questions about safety, Special Education, teachers, and reopen in fall.

In an article published by NPR

"Parents of kids doing blended learning are more concerned about their kids' mental health, more concerned about them falling behind, more concerned about them not getting enough instructional support, more concerned about them getting bad grades, failing, or not finishing," ParentsTogether co-founder Justin Ruben said.



**Image from Learning Accelerator*

"Taken together, results suggest the importance of continually monitoring the progress of SEL programs in schools not just on students themselves, but on the classroom settings in which they are embedded."

McCormick et al., 2017, p.21



Summer School Options

- Credit recovery for TCHS - all core subjects
- Intervention courses for Oak - English and math
- Reading intervention courses for grades 2 – 6
- Fundamental math support courses for grades 2 – 6
- Summer Transitional Education Program (STEP) –
 - One – two week sessions
 - Campus familiarity
 - Review expectations
 - Build excitement for 2021 - 2022

Summer Schedule & Format

- Distance and In-Person Instruction available
- Monday – Thursday; dates and times TBA

Looking Ahead



- Parent Q&A session Friday, March 26 6:00pm
- April 5 – June 10 (47 Days)
- Focus on Summer Expanded Learning Programs
- Plan for fall 2021
- Future parent Q&A to discuss program planning for summer and fall