



 **INTERNATIONAL SCHOOL  
OF ZUG AND LUZERN**  
respect | motivate | achieve

## THE EARLY YEARS COMMUNITY AT ISZL

Designed to give our youngest  
learners the best start on their  
educational journey

**AGES  
3 – 6**



The Early Years at ISZL focuses on the unique needs of our youngest learners and provides children with the foundation for academic success. Being part of our Early Years Community enables children to enjoy their learning now and into their future.

Our highly qualified and experienced team includes the following specialists for Early Years:

- German Teacher and Assistant
- Music Teacher
- Physical Education Teacher / Forest Leader
- Teacher Librarian
- Educational Technology Coach
- English as an Additional Language Teacher



## EARLY CHILDHOOD CURRICULUM AT THE INTERNATIONAL SCHOOL OF ZUG AND LUZERN

Our school is committed to the **International Baccalaureate®** Primary Years Programme (PYP) curriculum, meaning that our teaching is inquiry-based and planned around our students' developing needs and interests.

The ISZL Early Years Programme focuses on the following pillars of learning.

### PLAY

The daily schedule is built around opportunities for adult-supported, freely chosen play alongside adult-led, small group activities.

### OUTDOOR LEARNING AND PHYSICAL DEVELOPMENT

The children participate in daily outdoor learning sessions and regular forest visits led by our dedicated forest learning educators. In our Early Years Playground, students have access to a range of

materials and resources as well as to the outdoor stage, mud kitchen, sandpit, climbing tree, pond area, fire pit and vegetable garden. Our Early Years Gym is equipped with a range of equipment to develop coordination and physical skills.

### LITERACY DEVELOPMENT

Teachers understand the vital role of literacy for learning and focus on encouraging children's enjoyment of reading alongside their developing interest in signs, symbols, letters and writing. Children and families have access to our library to support their learning. Our library has an amazing collection of over 48,000 books in over 20 different languages and our Early Years Teacher Librarian is always on hand to assist.

### MULTILINGUALISM

Our Early Years German teacher and Assistant Teacher encourage integration with the Swiss community by offering German language tuition and focusing on Swiss culture. For children from non-

English speaking backgrounds, we offer English as an Additional Language (EAL) support.

### ARTS AND MUSIC

Children have regular visits to our music room equipped with an array of different instruments and supported by the Early Years music teacher. All of our learning spaces have an emphasis on the creative arts with well-equipped studio areas.

### MATHEMATICAL DEVELOPMENT

Our learning spaces provide children with opportunities for reasoning and problem-solving, supported by teachers. Cooking and baking provide real contexts for mathematics and are incorporated into our weekly routines.

*“Play is the highest  
form of research.”*

Albert Einstein



# EXTRA CURRICULAR PROGRAMMES AND SERVICES

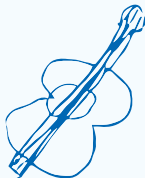
**Eagles Club After-School Care**  
*Our tailor-made solution for working parents offering after-school care daily until 6 pm*

**Lunch Programme**  
*Optional healthy lunch offered by our in-house chefs.*

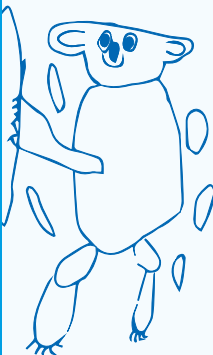
**Bus Services**  
*Fixed route, supervised transit service to and from class for our youngest learners.*

**Nursing Team**  
*To care for the health and wellness needs of each child.*

**Student Support Services Team**  
*Providing access to specialist support for all our learners' needs.*



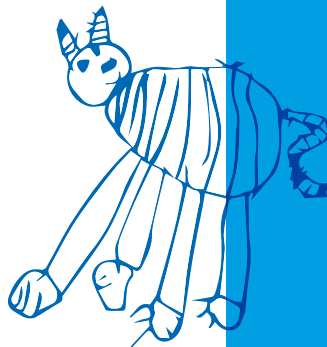
	Monday	Tuesday	Wednesday	Thursday	Friday
08.30 – 09.00	Morning class meeting	Morning class meeting	Morning class meeting	Morning class meeting	Morning class meeting
09.00 – 11.00	Arts & Music	German	Physical Education	Library visit	
11.00 – 12.00	Outdoor learning	Outdoor learning	Outdoor learning	Outdoor learning	Outdoor learning
12.00 – 13.00	Lunch	Lunch	Lunch	Mittagstisch (German)	Mittagstisch (German)
13.00 – 14.30		Guided Play	German	Guided Play	
14.30 – 15.30	Outdoor learning	Outdoor learning	Outdoor learning	Outdoor learning	Outdoor learning



## WHY THE INTERNATIONAL SCHOOL OF ZUG AND LUZERN?

ISZL's Early Years Community is open and welcoming, fostering a deep sense of wellbeing for all of our families. Teaching is personalised to meet the needs of all learners through engaging and meaningful experiences. Parents are seen as partners in their child's education and we work with them in an atmosphere of collaboration and trust.

When you choose ISZL for your child, you are choosing an established school in Central Switzerland with a reputation in the international school community for best practice in Early Childhood Education.



## WHAT PARENTS SAY ABOUT OUR EARLY YEARS PROGRAMME

*We are really impressed with the results our children demonstrate under the ISZL teachers' supervision.*

*(ISZL Parent, Kindergarten)*

*ISZL allows children to be children and to learn at their own pace. They see positives in everyone, which enables children to flourish and become confident individuals.*

*(ISZL Parent, Early Years 2)*

*Our son had an amazing time and we would like to thank all the staff for their exceptional support and the quality of education.*


*(ISZL Parent, Kindergarten)*

*A great environment fostering happy children.*

*(ISZL Parent, Early Years 1)*

*Thanks for a great experience for our kids. We appreciate the love and care our children have received at ISZL.*

*(ISZL Parent, Early Years 2)*

- 
- 1 Parent and Visitor Car Park
  - 2 Drop-off/Pick-up Area
  - 3 Outdoor Learning Area
  - 4 Old School House (Early Years 1)
  - 5 Rigi Building (Early Years 2 – Grade 1)
  - 6 Outdoor Learning Area (Early Years)

Interested to  
learn more about our  
Early Years Community?

Connect with us:



**ZUG CAMPUS (MAIN OFFICE)** | Walterswil | 6340 Baar | Switzerland  
Phone +41 41 768 2900 | Fax +41 41 768 2901 | office.zug@iszl.ch

**[WWW.ISZL.CH](http://WWW.ISZL.CH)**

ISZL is registered as a non-profit foundation (Stiftung) in Switzerland.

