



— Spirit of Shelton —

# THE HORIZON

A Newsletter for Alumni, Families and Friends of Shelton School

February 2021



## 2019-2020 Annual Report of Gifts

June 1, 2019 - May 31, 2020

(See Page 21)





# The Horizon Table of Contents

## February 2021

1	From the Executive Director
2	Development Doings
3	Outreach / Training Offerings
4	Shelton Outreach Is Everywhere
5	Shelton Speech / Language / Hearing Therapy Program
6	Shelton Evaluation Center
7	From the Associate Heads of School
8	Lower School News
9	Upper Elementary School News
10	Middle School News
11	Upper School News
12	Fine Arts Features
13	Community Connections Beyond the Campus
14	Parents' Page
15	Spotlight on Sports
16	Alumni Connections
17	Off the Shelf Library Update
18	Staff Stuff
19	Technology Trends
20	Mission and Vision Statements
21	Annual Report of Gifts 2019-2020

The Horizon is published by the Public Relations Department. This issue includes Shelton's 2019-2020 Annual Report of Gifts.

**Suzanne Stell**, M.Ed., CALT, Executive Director, Head of School

**Anne Hendrick-Thomas**, APR, Director of Public Relations and Marketing

**Theresa Bruno**, CRFE, Director of Development

*Special thanks to Christy Fowler and her digital photography students, and to Kyle Belz, Digital Communications Manager.*

*Architectural photos front and back cover  
© Charles Davis Smith, FAIA*

## FROM THE EXECUTIVE DIRECTOR

**Suzanne Stell**, M.Ed., CALT

### Grateful for This Year

What a year this has been. When it's all said and done, at Shelton we're living proof of one of our mantras—*we're charging forward*. And there are many things I am thankful for:

- Our Shelton community, and the many connections within it
- Our awesome students
- Teams, taskforces and cohorts that continue to tackle a global pandemic
- Incredible activities that did happen and were not cancelled
- Creativity of so many as we did nearly everything a new way
- Courage of others who charged ahead despite undercurrents of change
- Patience when everything needed to be done faster
- Unparalleled collaboration
- Kindness and caring for one another
- Core values that continue to ground us when making difficult decisions
- Fun and belly laughter at just the right moment
- Inspiration when it has been most needed
- Flexibility when "we used to do it this way" wouldn't work any longer
- Faith in our colleagues—camaraderie and "we're in this together" attitude
- Planning, perseverance and celebration as we opened our world-class new campus
- Unique gifts of time, talent, energy and resources found in so many



### A Vision 2020 Realized at a New Campus

Forty-five years later, June Shelton's mission has a new address. In the midst of COVID, we were meeting with contractors, wearing



Suzanne Stell touring with Christy Contreras, Director of Capital Campaign

hardhats on the grounds at 17301 Preston Road as we checked progress on a new wing or space, and finishing out furniture and supplies orders. Spring Break was extended, and so was our construction. Then came our move from the Ward Campus on Hillcrest - what an ongoing event. Teachers returned in May to pack up year-end for the move, while central administration stayed

until late June. What's more, our staff was not allowed on the new Preston Road campus for a good while, and yet we charged forward, knowing we'd all get here. Our Class of 2020 finally got to do an outdoor graduation in late July. Calendar dates changed, and things were sometimes done out of order. And yet, it all came together, and here we are.



## Partners

We continue to link up with others more often, more collegially, and at deeper levels. To cite but a few of our impressive partners:

- Nurses, healthcare networks, including Dallas County Health and Human Services and the Centers for Disease Control
- Counselors who share resources on social and emotional health
- University of Texas Southwestern Medical Center / Texas Health Resources, with whom we are doing a COVID-19 Prevalence Study
- School affiliations, e.g. Independent Schools Association of the Southwest, local and regional ISAS schools, local ISDs
- SAGE Dining Services
- Architects, engineers, maintenance and security personnel
- Shelton Parents' Association
- Texas Association of Private and Parochial Schools
- Shelton's Board of Trustees

## Events

This year we had to cancel many events without any choice. Others were imaginatively re-envisioned. Notable ones included:

- Grandparents' Day – one of our most popular events of the year was done virtually. We used staff to film a video that showed “a day in the life” at Shelton. Our student stars were outstanding. This is something we will do again, though we hope to have our grandparents on our new campus to tour them personally—nothing replaces in-person for such things.
- Homecoming – we trimmed some of the activities, while keeping several core for the week. We hosted our first football playoff game on our new field, and we planned it with social distancing in mind.
- Stampede Auction – our Parents' Association switched venues from The Bomb Factory to a virtual one, with such creativity you'd never guess it wasn't planned that way from the start.

## Four Business Entities

Sometimes we forget to mention the fact that we have four major business components at Shelton. Borrowing the business jargon of others, we have incredible *bundled services* that distinguish us from other educational providers. We have a workforce of 260 dedicated employees whose skills laser-target particular needs of our students and clients.

- 1) **School** – the largest independent school worldwide serving intelligent students who happen to have a learning difference
- 2) **Evaluation Center** – a place where multiple types of evaluations are offered to families, each seeking a diagnosis and appropriate and targeted recommendation for remediation and accommodations
- 3) **Speech Language Hearing Center** – a center that provides year-round therapy – in-person or virtually – to the community at-large, including screenings at other schools
- 4) **Outreach / Teacher Training Department** – a group that trains teachers and other professionals, offers a summer program, provides a community tutoring program, and carries Shelton's mission locally, statewide, nationwide, and even internationally



## Faculty and Staff

I have been at Shelton since 1985, and I am humbled and proud to have witnessed the grit and spirit exhibited this year. The personal and professional pivots required have been extraordinary. With added technology, teamwork, and a basic desire to preserve relationships at every turn, we are using new teaching models. Some are here to stay, and we continue to vet and improve at every step. Starting the week of March 13, 2020, we ramped up for a fast learning curve that has had a huge return of investment. We also designed policies that were real-time and relevant for our employees. Our Board made it possible for us to give raises at a time unheard of for so many. This was possible through the support of many and careful budgeting. Our staff are the heart of Shelton and what make it happen for our students and clients.

## Charging Forward with Courage and the Qualities of Youth

Celebrating the seniors of 2020, faculty member **Sam Crabtree** delivered a wonderful message and quoted the acclaimed judge and writer Richard Goodwin: “Our answer is the world's hope; it is to rely on youth...The world demands the qualities of youth; not so much a time of life but a state of mind.” To Goodwin's words, Mr. Crabtree added his own—“Create ripples of hope. Demonstrate kindness toward others, especially those who don't often receive kindness; truly listen to those who largely go unheard; seek to understand people before you start labeling them; honor in others the sense of human dignity you'd like others to honor in you. Don't forget about the part you play in what Goodwin calls those ‘numberless diverse acts of courage and belief’ that shape history.”

I champion Shelton's youth in state of mind, and, as Mr. Crabtree said, “Never take yourself too seriously, but take seriously the things you really care about, the values and ideals you've invested yourself in.” I believe we are creating ripples of hope in Shelton's youth and for Shelton's next chapter in its history.

**Cindy Ward**, widow of Shelton's former Board Chairman Bill Ward, and her daughter Katy, a former Shelton student, were recently given a tour of our new campus by Joyce Pickering, my predecessor as Executive Director, a person still working to share Shelton's mission. Says Cindy, “Katy and I are bowled over with what we see here. Bill would have been over the moon to see this campus. The Ward Family is proud of this warm and inviting place for all the future students who will reap the benefit of a Shelton education.”

*Here's to new horizons and endless opportunities.*

# DEVELOPMENT DOINGS

Theresa Bruno, CFRE, Director of Development



## Supporting Shelton - NEW HORIZONS...ENDLESS OPPORTUNITIES

There was so much excitement as we moved into our new campus this fall, and it is extraordinary. The teachers have been troopers through everything, making sure students have every opportunity to learn. And no matter where you turn, there is a dedicated staff member or employee committed to putting Shelton students first.

We are all thrilled to learn, teach and work on this beautiful campus. Even the students seem to walk through the halls differently, knowing that they are surrounded by endless opportunities in learning and activities, especially now as extracurriculars and academics are all on the same campus. We always say that no other school offers the expertise, experience, academics and reputation under one roof as does Shelton.

By now, you have received information on this year's Annual Fund **New Horizons...Endless Opportunities**. Making sure our students have the best faculty, teaching the way our children learn, is one of the reasons the Annual Fund is so important.

Your gift to the Annual Fund is the first and most important way you can support Shelton and benefit every student with endless opportunities.

Everyone at Shelton travels on a unique path. Our journey will take us through challenges, adventures, opportunities and accomplishments. Every year, our students' achievements and dreams are made possible by the generous support and involvement of our Shelton community. We are grateful for the giving spirit that is so evident in our community. Please continue to be a part of our collaborative journey together and support Shelton as best you can with your energy and resources.

In the Annual Report of Gifts section of this *Horizon*, we recognize and acknowledge the gifts of our supporters and celebrate the generosity and giving spirit seen throughout the year. It is with deep gratitude that we express our sincere thanks to all of the generous members of our Shelton community: our trustees, parents, grandparents, alumni, friends, faculty, staff, volunteers and especially our talented students. Our community makes it possible for us to provide **New Horizons...Endless Opportunities** everyday. We are grateful for your continued involvement and support.

## Shelton 2020-2021 Annual Fund Leadership

### Parent Co-Chairs

Jessica Slaven and Holly Vitullo

### Ambassador Chair

Julie Seedig

### Shelton Annual Fund Ambassadors

Emily Chapman	Jennifer Greenlee	Stephenie Patrick
Kimberly Curvey	Thelma Hall	Kristal Roberts
Jennifer Dix	Blair Miller	Suzanne Sauder
Jennifer Gampper	Debbie Myers	Tia Smith
Heather Hunt Graham	Tammy Olsen	Brooke Zasa
Prudence Graham	Paige Orth	



We are absolutely thrilled to serve as this year's 2020-2021 Annual Fund Co-Chairs. A new school year, a new campus and new horizons. This year may look somewhat different, but our excitement has never been stronger. That's because, at Shelton, we know our students have endless opportunities.



Jessica Slaven (L) and Holly Vitullo

It's an honor and pleasure to work with the Annual Fund Ambassadors and other members of our community. We are so humbled by the Shelton community's generous support of our amazing students and school. We truly believe that a contribution to Shelton's

Annual Fund is one of the most important ways to support Shelton's mission to serve and empower the lives of students who learn differently.

This year's Annual Fund campaign "**New Horizons...Endless Opportunities**" benefits every student every day! In these challenging times, we remain committed to offering Shelton students endless opportunities. When you make a gift to the Annual Fund 100 percent of your gift benefits our students. Your generosity directly impacts:

- Excellent Faculty
- Small Student to Teacher Ratio
- Amazing Opportunities
- Specialized Educational Programs
- Tuition Assistance Program
- Professional Development

What better way to acknowledge the impact Shelton has had on our students' lives than to have every family support the Annual Fund! Our goal this year is \$950,000. Help us to continue providing "New Horizons and Endless Opportunities" for every student—please make your gift today!

### North Texas Giving Day - September 17, 2020

Thanks to all our donors who supported Shelton on North Texas Giving Day. The event, sponsored by the Communities Foundation of Texas, was a wonderful way to kick off our 2020-21 Annual Fund Drive - New Horizons...Endless Opportunities. This year, 219 donors generously contributed \$108,445 to support Shelton.

We are grateful for all who helped make this event a success.



# SPEECH/LANGUAGE/HEARING CENTER NEWS

Krista Norwood, M.S., CCC/SLP, Director

## Embracing Teletherapy

Max McKeown, English author and researcher has said, *"All failure is failure to adapt, all success is successful adaptation."* This school year has been overflowing with opportunities to adapt. Along with other educational professionals, the staff members of the Shelton Speech Center now consider ourselves qualified experts in the field of cheerful adaptation! When area schools closed in March 2020, we faced the task of transitioning all our speech therapy clients to teletherapy. While admittedly daunting at first, our therapists were soon amazed at the amount of research that had already been done in this field and were invigorated by the collaboration of speech therapists around the country and the extensive resources available. We spent hours in continuing education webinars, attending technology courses and compiling and sharing digital materials—all within a week. By the end of March, we were able to begin providing therapy to our community and Shelton clients via an online platform. From early childhood language, stuttering and articulation, to reading and social language, we did it all, sometimes scheduling up to fourteen therapy sessions a day.

Studies have shown that the majority of speech therapy clients find tele-therapy as effective as in-person therapy, and this has been our experience as well. Some students will always be a better fit for face-to-face therapy, but we are grateful to have new, relevant skills that allow us to provide quality therapy services without the hindrance of schedule or location considerations. Teletherapy has opened the door to new opportunities to serve a wider variety of therapy clients.

## Our Community Mission

Part of the mission of the Shelton Speech Center is to aid parents and schools by identifying students with speech, language and reading delays and recommending appropriate early intervention. We accomplish this goal each year through our outreach screening program where we provide comprehensive hearing, vision, and speech-language screenings in private schools throughout the metroplex. As expected, this year our screening program looked a little different as some schools opted to provide screenings virtually. We were up to the challenge and were still able to provide over 700 such assessments. Currently, our Shelton Speech Center therapists continue to provide therapy in five other area schools, in addition to our work at Shelton.

## Back to School and Looking Ahead!

While we've loved becoming teletherapists, Speech Center therapists were enthusiastic to move into our new space and welcome some of our clients back for in-person therapy in the fall. We are eagerly anticipating the day when our waiting area can once again come to life with families and children, visiting and playing together. Planning has already begun for our highly successful summer programs. Using a summer-camp format, our therapists provide intensive language therapy to students with significant language delay in *Language Adventures* and pragmatic language therapy for students with challenges in social competencies in *iSocialize*. We are anticipating an exciting and productive 2021 spring and summer offering quality therapy services to our Shelton students and community clients.

## Speech/Language/Hearing Center Staff



Krista Norwood



Marilyn Aaron



Lindsay Cobert



Lauren Edwards



Lori Johnson



Avie Nikolopoulos



Stephanie Weatherford



# OUTREACH OFFERINGS

Christine Bedenbaugh, MAE, LDT, CALT, QI, Director Shelton Outreach/Training



This past year certainly looked radically different than last, but we have managed to continue training teachers throughout the COVID-19 pandemic. We rapidly transformed to a virtual model via Zoom that we continue to use. Currently we are not training in-person but will resume as soon as safely possible, using a customized program at Shelton's new training lab, or on-site at the client's school. Online training is here to stay as an option.

Shelton offers three accredited teacher training courses for educators serving students with dyslexia, at both the Associate / Teaching and Therapy Levels.

- 1) Shelton Academic Language Approach (SALA / MTA, based on Margaret Taylor Smith's Multisensory Training Approach), directed by **Chris Bedenbaugh**
- 2) Shelton Academic Reading Approach (SARA, based on Texas Scottish Rite Hospital's Take Flight), directed by **Nancy Coffman**
- 3) Sequential English Education (SEE), directed by **Joyce Pickering**

Each is accredited by the International Multisensory Structured Language Education Council (IMSLEC) and the International Dyslexia Association (IDA). This year, we trained 279 teachers using these three courses.

We continue to partner with Quantitative Research Evaluation & Measurement (QREM) for impact studies on teachers trained through our MSLE courses. Says QREM President Didi Fahey, "As teachers trained by Shelton themselves often train, mentor, or guide other teachers, the reach of Shelton training extends well beyond the number of teachers who actually attended Shelton courses." A recent study cited the full reach of Shelton approaches at over one million students per year.

Currently Shelton has training cohorts in Alabama, Arkansas, Louisiana, Mississippi, Utah and Texas. Related to this, I have earned Texas Reading Academy Cohort Leader status. Cohort Leaders are the lead facilitators for the new K-3 Reading Academies which resulted from Texas HB 3. Cohort Leaders are hired by an Authorized Provider to administer the Reading Academies Blended



(online) course, while "Facilitators" similarly administer the Comprehensive (on-site, live) course.

In January we hosted the Academic Language Therapy Association (ALTA) Regional Summit conference. Coordinated by Shelton's **G-g Shryer** and **Susmita Sarma**, there were 525 attendees for the first-ever virtual conference.

**Dr. Laure Ames**, Director of Shelton's Evaluation Center (see pg. 6), conducted a virtual *Screening for Dyslexia* workshop February 6. Attendees were from California, Colorado, Wisconsin, Arkansas, Mississippi, and Texas.

We continue to offer six workshops a year to new Shelton parents, also open to the public at no charge. Teachers may also attend and earn continuing education units (CEUs).

- Overview of Learning Differences
- Social Skills / Organization and Study Skills
- Oral and Written Language: Decoding, Spelling, Comprehension and Composition
- Freedom from Chemical Dependency
- Math, Science and Social Studies

On February 5, we were pleased to be a sponsor of the virtual Dallas Branch IDA Regional Conference, *Deeper Than Words*.

**Patricia Gallaher** and **Jennifer Drake** are coordinating *Summer, the Shelton Way*, to be held on Shelton's new campus starting in June.



For more information about our many offerings, please contact **Consuela Teague**, Executive Assistant, 972.774.1772 Ext. 2223.





# SHELTON OUTREACH IS EVERYWHERE

Joyce S. Pickering, Hum.D., Shelton Executive Director Emerita

**Dr. Joyce Pickering** directs the Outreach component of the Executive Director Emerita's office. This includes the Multisensory Structured Language Education (MSLE) courses in Sequential English Education (SEE) and co-directing Shelton Montessori Training (SMT). She is also a SEE Instructor, Montessori Instructor and presenter of workshops and conference worldwide.

We, like many others, made a major shift in delivering our training services to an online model. It has been a challenge, but the silver lining is that recording our trainings will make it possible to offer our courses anytime, anywhere. We look forward to in-person trainings soon and will continue some offerings online, enabling Shelton to reach more teachers and students. Shelton Outreach is still worldwide.

## MSLE - SEE Training

Usually this office provides one to two trainings in SEE per year, but this year we have given six. Twenty-four teachers have been certified this year by Shelton's MSLE course in SEE from six instructors.



John Hodges conducts Scholars session

**John Hodges** is a SEE Instructor, Coordinator of the SEE program at Shelton School and Coordinator of Shelton's Saturday and Summer *Scholars* offerings. *Scholars* provides remediation at a reasonable cost to children who cannot attend a fulltime school like Shelton. John also coordinated the establishment of the Wesley-Rankin Scholars program in West Dallas and has

delivered Shelton's *Overview of Learning Differences* to seven area schools and parent groups this year.

**Danyle Duke** is a SEE Instructor and manages the records of SEE trainees. She has been instrumental in revising the SEE manuals the past two years. **Amy Cushner**, Head of Upper Elementary School and Associate Head of School at Shelton, is also a SEE Instructor and gives presentations on- and off-campus. **Pam Brockway** manages appointments, travel and record-keeping for all Outreach staff.

Our training and collaboration with ASPIRE (formerly LIFT) for Adult Literacy in Dallas continues to be important. SEE training will continue at the Brighton School in Baton Rouge, LA and at the May Center in Santa Fe, NM. Training began at The Bridgemark School in Tyler, TX this year. A project to offer SEE training in the North Mississippi Literacy Project is underway. Eighty teachers will be trained and 1,900 students will be reached through this program.

## Montessori Training

**Gulzar Babool** is Co-Director of SMT, along with Dr. Pickering. This year we have received the Montessori Accreditation Council for Teacher Education (MACTE) Accreditation and the American Montessori Society (AMS) Affiliation of the Montessori

Elementary II Standalone program. In addition, SMT has received AMS Affiliate Applicant status for the Montessori Administrator Course and the Montessori Inclusion Endorsement (MIE). Currently, we have two principals each from Dallas and Fort Worth ISD as part of the Administrator course. We have started our

second cohort for the MIE. Last year, we had 108 teachers doing Montessori coursework and/or practicum, and we have more than 18 Montessori Instructors teaching our courses.

In response to the pandemic, SMT pivoted effectively in creating virtual Montessori courses. **Gulzar Babool** and **Marija Roberson**, our E-Learning Assistant, were able to create ten courses on Canvas, a learning management system provided by AMS. We have also created several self-paced virtual professional development modules that teachers can complete using our virtual platform. Gulzar and Joyce presented at the International LEAD Conference in Prague virtually, where administrators from Montessori schools worldwide linked up to learn about learning differences. Gulzar has conducted a virtual professional development session for the Fort Worth ISD. Gulzar and **Cathy Luby** continue to conduct virtual field visits to support our teachers during these trying times. SMT continues to meet the needs of our adult learners and school administrators and to provide them with continuous support virtually.

## MACAR

Montessori for Children at Risk for Learning Difference (MACAR) has been offered at Shelton for over 25 years. In the 2019-2020 school year 19 teachers and administrators attended the training. We look forward to offering both the Beginning and Advanced courses this summer.

## Short-Term Workshops

Many of our short-term workshops were postponed this year but we were able to meet with many schools virtually or reschedule. Next fall workshops will be presented at Trine University in IN, as well as for groups in Fort Smith, AR, Minneapolis, MN and St. Louis, MO.

Shelton Outreach continues to serve students and teachers in the Dallas area and to provide information and training internationally in the unique *Shelton Way*.



Joyce Pickering (L) and Gulzar Babool team for presentations



# SHELTON EVALUATION CENTER

Laure Ames, Ph.D., Director



The Shelton Evaluation Center has had a busy year and our staff has worked with clients from Louisiana, Oklahoma, Arkansas, and all over Texas. When we evaluate a client through either a psychoeducational, Autism Spectrum Disorder, and/or ADHD evaluation, our goal is to obtain a comprehensive picture of the client's functioning so that we can make appropriate recommendations. If any student is struggling, we should want to know why. Correct diagnoses help guide how to best help the

student be as successful as possible. The remediation and/or accommodations that we recommend are tied to the diagnoses we make.

## Common Diagnoses

The most common diagnoses that we make at the Evaluation Center are Specific Learning Disorder with impairment in reading (dyslexia), Language Disorder, dysgraphia, Attention Deficit / Hyperactivity Disorder (ADHD), and Autism Spectrum Disorder.

### Dyslexia

Dyslexia is a specific language-based learning disability that is neurological in origin. It is characterized by difficulties with accurate and/or fluent word recognition and by poor spelling and decoding abilities (IDA 2012). Once dyslexia is identified, we would recommend academic language therapy with a Certified Academic Language Therapist (CALT). The most intensive therapy would be through a special school like the June Shelton School. Examples of accommodations for dyslexia might include extended time for reading assignments, using books on tape, or waiving a foreign language requirement.

### Language Disorder

A spoken language disorder, also known as a Language Disorder, represents a significant impairment in the acquisition and use of language across any of the five language domains (i.e., phonology, morphology, syntax, semantics, pragmatics). Work with a speech-language pathologist would be the recommended remediation. Examples of accommodations might include being given extra time to process and formulate

You and the Evaluation Center  
were the answer to my prayers. It's a huge relief to  
know how to help my child moving forward, after  
three years exhausting everything I knew how to do.

Shelton Evaluation  
Center Client (Parent)

answers, or encouraging teachers to ensure understanding of the assignment, rephrase the information using less complex language, or re-deliver instructions on a one-to-one basis.

### Dysgraphia

Dysgraphia can refer to problems with handwriting. Remediation would be through occupational therapy, and accommodations might include the use of a laptop or word processor during class lectures, receiving copies of the instructor's lecture notes, or using a tape recorder during class lectures.

### Attention Deficit / Hyperactivity Disorder (ADHD)

ADHD is a persistent pattern of inattention and/or hyperactivity-impulsivity. Treatment is usually through consultation with a psychiatrist or neurologist for medication management. An organizational coach is often beneficial. Accommodations might include preferential seating, separate room for tests, assistance keeping track of assignments and materials, and being permitted to take breaks during class and testing.

### Autism Spectrum Disorder

Finally, Autism Spectrum Disorder is a developmental disorder characterized by persistent deficits in social communication and social interaction across multiple contexts and restricted, repetitive patterns of behavior, interests, or activities. Treatment may be through the Social Thinking curriculum, speech-language therapy, social skills training, and/or Applied Behavior Analysis.

The Shelton Evaluation Center is unique in the Dallas area because our staff is experienced in offering multiple kinds of evaluations and integrating the information from these different evaluations in order to make appropriate and targeted recommendations for remediation and accommodations. Please call extension 2244 if you have any questions.

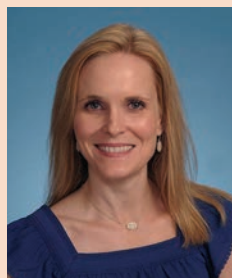
## Evaluation Center Staff



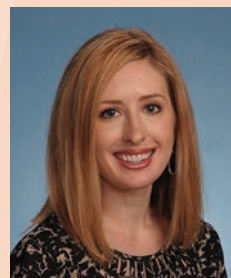
Joni Williams



Jacquie Pack



Stephanie McCain



Catherine Harris



# FROM THE HEADS OF SCHOOL



## Shelton Participates in COVID-19 Prevalence Study with Local Medical Institutions

**Amy Cushner**, Associate Head of School

Shelton was chosen to participate in an important project, the *DFW COVID-19 PREVALENCE STUDY*, that will help combat and contain COVID-19. It involves a collaboration with local movers and shakers UT Southwestern Medical Center and Texas Health Resources. The purpose of the study was to find out how many non-medical, essential frontline

workers in the DFW community have COVID-19 now or have had it in the past. We, along with other businesses and schools, were chosen because we have front line employees who provide essential services to the community. We have worked with Drs. Amit Singal and Jasmine Tiro, two of the three leading researchers involved with the study, to execute our role in the study, which was voluntary and free for all our staff.

Participation included:

- Taking a survey in January
- Getting a COVID-19 nasal swab for active infection (conveniently on our campus) February 1-2, or elsewhere at 14 other community sites through February 28
- Getting a COVID-19 antibody blood test to learn of prior infection (on campus)
- Getting quick results and advice on next steps
  - o Note: Test results were kept confidential, to the limits allowed by law. As has been required thus far, positive tests for COVID-19 are reported to Shelton's **Eve Herman**, MN / Coordinator of Health Services, and to the Texas Department of State Health Services. Antibody tests of individuals are not identified to employers. Personal data and demographics are confidential.



Amie Jennings signs in for testing



Marsha Harris screened for antibodies

We felt fortunate to have participated in this unique opportunity, because it allowed us to do a small part to make a real impact in educating others as we seek to combat COVID-19. Working with others, and using the results of this study, we hope to save the lives of many.

## Shelton Affiliates with National Organizations

**Mellany Barnett**, Associate Head of School



Shelton has recently joined NAIS, the National Association of Independent Schools, and we look forward to utilizing all of the resources this organization provides. NAIS serves independent schools by offering research and trend analysis, guidance for leadership and governance, and many professional development opportunities for school and board leaders. Many staff members have already taken advantage of webinars related to admissions and enrollment, staff contracts, and diving into deep learning for students on campus and online.



# LOWER SCHOOL NEWS



Lower School students were precious in parade



Family fun at Lower School drive-thru parade

## Young Students Have Big Generosity

Lower School families were generous with their donations to a community toy drive. It's fun when our families help other families.



So proud of all of our generous families helping others



Students and critters enjoy new Shelton campus

## Home Learners Connect to All Classes

Lower School's Shelton @Home learners have been involved in their daily classes as well as their Specials groups. They participate through the Zoom platform for meetings and language therapy. Teachers have also been conducting one-on-one Zoom meetings with students daily for check-ins and lesson delivery.



## Lower School Loves Outdoors

The students have loved our brand new outdoor space on the new campus.

## Moving to the Preston Road Location

We were excited to tour everyone at our new location, starting with our faculty and staff. Our Montessori-aligned classrooms are a dream come true, for students and staff alike.

## Red Ribbon Week Brought Learning and Fun

Each day during Red Ribbon Week, which focuses everyone on safety and freedom from chemical dependency, was celebrated in some way.



We will team up against drugs

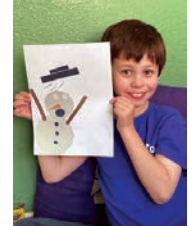


## Honoring Others

We paid respect to veterans with a ceremony on our new field.

## Young Artists Prove Creative

**Gretchen Goldstucker**, our new art teacher for Lower School and Upper Elementary, has made Art fun and educational. Shelton students are engaged, learning and being creative!



Let it snow!

## STEM Begins at Ground Level

STEM (Science, Technology, Engineering, Math) curriculum now starts at the Lower School level. STEM lessons involve problem-solving, creativity, and collaborative learning, robots and coding, all adaptable to the youngest mind.







## Upper Elementary Sticks Together

The Togetherness Picnic is an annual event in Upper Elementary. Students are typically grouped into “families” combining third-, fourth-, and fifth-graders to enjoy a day of fun with games both inside and outside. With COVID-19 protocols in place, this year looked a little different.

Students created Togetherness projects, like a birdhouse, within cohorts, rather than in large groups. They played games within cohorts and enjoyed a hamburger lunch with all the fixings from Chef Tom in our Dining Hall. The event culminated with a project that all students contributed to.



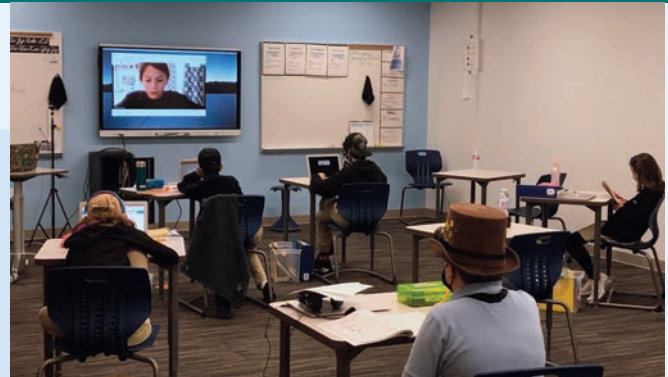
## Students Visit Trumpetland and Louis Armstrong

After reading a book about Louis Armstrong, one of the third- / fourth-grade advisories decided to take a field trip to “Trumpetland” with music teacher **Ken Utz**. He educated them about the trumpet, played tunes for the class, and found the perfect Louis Armstrong videos to enhance the lesson. All listened and learned, tapping toes all the while. Upper Elementary likes blending academics and specials with its talented teachers.



## Using Every Inch of 30 Acres

Upper Elementary classes have been taking advantage of gorgeous outdoor space at our new 30-acre campus.



## Lessons Go Online with Math and Games

Using online sessions, the students are actively engaged in several large and fine motor exercises following the teacher’s guidance. Another segment of the session is dedicated to the practice of mathematical operations using the Stamp Game. In this lesson, the teacher is demonstrating how to solve a division problem. The students are sharing the progress on the screen.

Students learn through their daily online lessons with teachers and within the classroom setting through Mevo cameras.



Susmita Sarma coaches students



## Montessori a Plus in the Classroom

Upper Elementary students regularly work with Montessori manipulatives and geometric forms. Basic geometric forms offer endless possibilities for creativity.



Students study angles and geometric shapes



# MIDDLE SCHOOL NEWS

## At a Glance

It's been an exciting year thus far. Moving onto a new campus and into the classrooms took real team effort and created a real synergy. The division sports a crisp asparagus green in its classroom and its own common space, complete with

contemporary and comfy furniture for future larger fun gatherings.

August highlights included in-service, when faculty and staff were feted with treats delivered by parents, followed by campus tours conducted for individual advisories.



A smart student at a SmartBoard



Patricia Gallaher (center) conducts back-to-school tour

Today the division has 316 students and 50 faculty engaged in academics, electives and collaboration. Whether on-campus or at-home, the educational approach has been creative and expansive for all.

Middle School has a robust STEM emphasis this year. Projects have included building a Rube Goldberg Machine (one student's resulting in a hot chocolate mix landing in a cup of hot water), using Tinkercad 3D printing to design keychains, nameplates, rings and phone stands, and designing a roller coaster and using online simulations to test its physics.



Science experiments are cool

## Electives

**Life Hacks** is new this year for seventh- and eighth-graders. Modeled after the old Home Ec concept, students are being taught life skills by **Courtney Dios**: laundry, cooking, first aid, composting and gardening, and sewing. Students used new sewing machines to sew COVID-19 safety masks as a first project.



Blair King's choir students rehearse song for Grandparents' Day

## Outdoor Classes

P.E. and Athletics aren't the only outdoor offerings. To assemble safely during COVID-19, choir classes have met outside on good-weather days. A portable piano and SmartBoard helped the process.

## Student Council

Faculty sponsors **Ann Wright** and **Lauren Sanders** help 84 Student Council officers and representatives with their activities, including a welcome video for students and teachers, community service projects (see pg. 13), designing t-shirts and decorating student lockers. They conduct two weekly Zoom meetings to plan.



Students gather blankets and socks

## Sports

Shelton is fortunate to have offered sports this year, as some local middle schools did not. We have offered football, cross country, basketball and soccer. Girls and boys basketball teams made it through semi-finals.



Middle School Cross Country team

## Social Skills

**Middle School Counselor Dayna Kline** assists students and teachers with resources for social and emotional well-being. This has been especially important for the current year.



## Homecoming 2020

Shelton held its first Homecoming at the new Preston Road campus.



Pep rally on new field

Homecoming Court members were presented at the football game halftime, escorted by their parents:

Homecoming Queen and King **Kennedy Moore** and **Seth Kassanoff**

Senior Homecoming Court **Shae Galardi, Annie Skaggs, Ryan Bentson, Jedidiah Gibson**



King Seth Kassanoff and Queen Kennedy Moore

## StuCo News

Upper School Student Council made treat bags, planned an activity, and made a video for the fifth-graders at Halloween. They joined ranks with Middle School's holiday sock and

blanket drive and gathered a big box of donations. Members also assembled cute stockings full of treats for all the Upper School staff for Christmas. **Tobin Knox** is faculty sponsor for the organization.



## National Honor Society Connects with COVID-19 First Responders

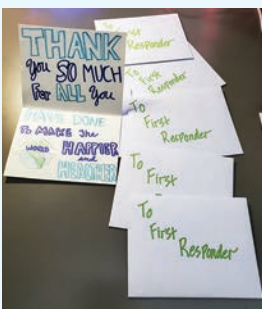
Since 2012, Upper School has had a chapter of the National Honor Society (NHS), a nationwide organization that recognizes students of high academic achievement, good character, and strong leadership skills. This year members selected a service project of writing and delivering personal thank-you notes to COVID-19 frontline responders and healthcare workers.



### Officers for 2020 - 2021

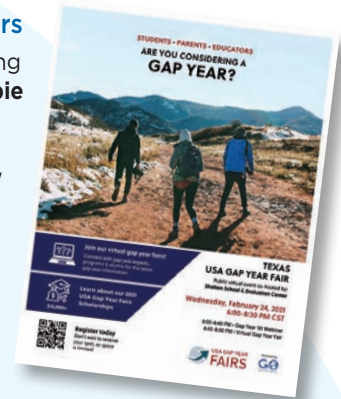
President - **Ryan Kassanoff**  
Vice-President - **Eric Hershman**  
Secretary / Parliamentarian - **Annie Skaggs**  
Historian - **Christian Valade**  
Treasurer - **Ava Aidala**

Faculty advisor is **Samantha Franklin**.



## Seniors Plan for College and Careers

Members of the Class of 2021 are making plans for the future, working with **Debbie Knox**, Director of College and Career Advising. Seventy-four seniors are studying options in a year that has new educational models made necessary by COVID-19. Some will go directly to college. Others may take a gap year for a different experience. Shelton has again partnered with USA Gap Year Fairs to host an event, this year being held virtually on March 30.



## Clubs Hope to Expand

COVID-19 has curtailed participation in many of our Upper School clubs. A few continue, if even informally. **Rosanne Brooks'** Quizbowl students have not participated in any tournaments this year, but they remain connected.



Quizbowl club action continues via Zoom

## American Sign Language Spans Divisions

Upper School students have been sharing their American Sign Language (ASL) skills with younger students. ASL instructor **Carrie Shillingburg** sent student ambassadors to share their knowledge with Upper Elementary students.



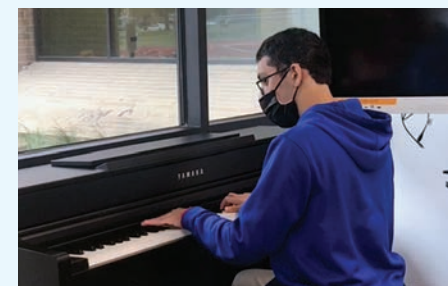
It's good to communicate in another language



Always good to keep the brain active

## Senior Lounge a Popular Gathering Spot

The new campus sports a popular and versatile lounge for seniors. Students gather in the mornings, plus other times throughout the day. The room was a temporary classroom for part of the year, and the piano in the lounge was put to use by several performers.



Ishan Purin enjoys playing in the lounge



# FINE ARTS FEATURES

Fall 2020 found Shelton's Fine Arts program focused on blooming where it was planted at the new campus. Construction of the incredible and long-dreamed-for facilities was in process, inspiring students, staff, parents, community donors and supporters of the arts. Due for completion in Spring 2021, the new world-class Fine Arts Center will feature:

Theatre / Main Stage seating 450 (coming in Phase 2)

Black Box Theatre seating 200

Dedicated art gallery space to showcase Shelton creativity

Film studio equipped with edit bays, control room, dedicated sound studio for radio and podcasts

Three high school arts rooms to house 2-D art, ceramics and sculpture studios

Band hall, choir and drumline classrooms / rehearsal space

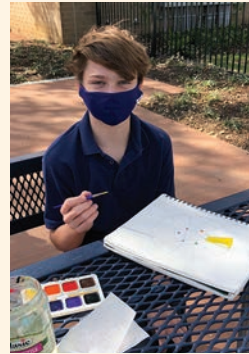
Upper School theatre classroom

Digital photography room

All arts, Lower School through Upper School, housed in proximity



New Fine Arts entrance



Outdoor classes are a plus

Director of Fine Arts **Anné Hughes** says, "Our new Fine Arts Center will create abundant synergy, which is exponential in nature. Whether virtual or in-person, our students are thriving in the arts, performing and creating works that lift all of our spirits."

Art can now be found throughout the new campus. High school students are producing the daily *Charger News*. Band and Drumline are creating spirit at every turn. Our youngest students are creating art, music and drama content that is then captured in a video for families to enjoy. Our choirs are performing virtually and in-person, impromptu or orchestrated. Productions like *The Secret Garden* are perfect for campus spaces like our outdoor courtyard.

Life is better experienced with and through all the arts, and Shelton can finally realize the consolidated backdrop for all of them.



Woodworking project



*The Secret Garden* was perfect for new courtyard



Aspiring actors from Upper Elementary



Drumline performs on field



# COMMUNITY CONNECTIONS BEYOND THE CAMPUS

Shelton continues to be involved with numerous service projects that benefit both individuals and community organizations. The COVID-19 environment for all citizens has limited many traditional service opportunities this year, including Branch Out Dallas, Shelton seniors' community service day off-campus, a trip to the North Texas Food Bank, and our annual Ethics Symposium. Shelton's heart and spirit remain large, however, and we have continued to help many.



Shelton packed the trunk

## Dallas Children's Advocacy Center

Middle School Student Council coordinated a schoolwide collection of toys for this deserving nonprofit organization.



(L to R) Eddie Moreno, Chris Brendel and Lauren Sanders with school's collection



Upper School students round up gifts

## Austin Street Shelter

Middle and Upper School Student Councils teamed up to spearhead a collection of socks and blankets.

## Sudden Arrhythmia Death Syndrome (SADS)

Middle School Student Council is doing its annual Valentine candy bar sale to benefit SADS.

## Family Victim of Fire

Shelton held an organization-wide clothing drive to help Shelton security officer Felicia Redd, whose home burned in December.

## Upper School

Community Service Coordinator **Wil Matthews** reports that Upper School students completed 3,115 community service hours for 2019-20, despite no-fault elimination of numerous activities. To date, 320 hours have been provided by seniors for 2020-2021.

## Community Networking

Shelton continues to affiliate and serve many like-minded organizations:



**North Dallas Chamber of Commerce**  
For the 18th year, Shelton participates with the NDCC's Education Committee, chaired by Shelton's **Anne Thomas**.

## Speakers Series

Shelton participates in joint ventures to sponsor notable authors and motivational speakers



## Professional Conferences

Shelton sponsors conferences, e.g. Texas ALTA North Regional Meeting. While our dream was to have hosted the event on our new campus, we did it virtually this year for some 525 attendees. The event was planned by faculty members **G-g Shryer** and **Susmita Sarma**.



# PARENTS' PAGE

## Shelton SPA Is Unmatched in Its Service

**Chuck Marlett** (James David, Gr. 8) and **Michelle Rivera** (Nico, Gr. 10) head the Shelton Parents' Association (SPA) as co-presidents for 2020-2021. Each has a long track record of service to Shelton—Chuck as Vice President of Communications for three years, and Michelle as running the Charger Corral for five years. We are grateful for their continuing leadership.

## SPA Lineup of Activities

Beginning with a term of office in Summer 2020, the SPA officers and volunteers have operated in the environment of COVID-19 and have had an amazing track record of designing and redesigning its events to support the school. Parallel with the school's hybrid educational experience, the SPA has amazingly adapted its many activities to virtual experiences

when in-person has been impossible or unwise.



Karon Jones (L) and Michelle Rivera set up new campus school store



Plenty of spirit apparel in The Charger Corral



(L to R) Michelle Rivera, Karon Jones and Chuck Marlett on hand to help

Activities have included:

- Back-to-school divisional socials, handled virtually and creatively
- Stocking of fun and creative spirit items in the new campus' Corral school store, including online orders and campus send-home fulfillment
- Weekly e-communication of SPA activities through *The Scoop*, posted by **Corrie Shores** (Cooper, Gr. 4)
- Spirit-rousing support of many other activities that add to Shelton Pride, e.g. providing grab 'n go lunches for Shelton staff during parent conference days
- Assistance with Shelton's 2020-2021 Annual Fund Drive
- Senior Rally Day, with help from parents of Class of 2021 seniors



Julie Kuntz (L) and Susan Goodiel help decorate for Senior Rally Day



Stampede '21



Gina Rangel sorts T-shirts for Stampede Week



Mandy Evans (L) and JoAnna Sudbeck deliver prize bags to auction donors

## Stampede '21 Plans Off to the Races

Auction co-chairs **Mandy Evans** (Caden, Gr. 7) and **Kimber Hartmann** (Brooks, Gr. 5), along with **Shelly Lloyd**, Shelton's Director of Volunteer Relations and Events (Garrett, Gr. 10), are planning this year's benefit auction on March 26. The event features events that combine online and virtual components. This year's theme is *Stampede '21*. The school enjoyed *Stampede Week* January 25 - 29, with daily student activities.

We couldn't do school without our dedicated and amazing SPA.



# SPOTLIGHT ON SPORTS



Track and football fields



Basketball courts



Weight room

New spaces were the big news for the first part of the 2020-2021 year. Fall found us using the football / soccer field, the Charger Stadium that seats 1,500, gyms and weight rooms.

## Staff Changes

**Freddie Jones**, Director of Athletics and PE, retired mid-year. Coach **Marco Rivera**, a 15-year member of the Shelton community, is serving as Interim Director of Athletics.

## Shelton Signings

*Shelton Pride* is high, with four seniors signing letters of intent to play sports at the collegiate level:

- Anthony Apollaro** (baseball, Pace University)
- Trinity Byars** (soccer, University of Texas Austin)
- Mack Giles** (golf, Hofstra University)
- Caitlyn Groff** (swimming, University of Wyoming; State TAPPS Champion, 200 & 100 Free)
- Sophia Reynolds** (volleyball, University of Arkansas Little Rock)
- Isaac Singleton** (football, SW Oklahoma State University)



## Fall Upper School Teams

### Varsity Football (TAPPS Division III-2)

Shelton made the playoffs for the fifth consecutive year and hosted its first playoff game at our new Charger Field.

<b>Matthew Akgerman</b>	Honorable Mention All District Kicker
<b>Ryan Bentson</b>	Honorable Mention All District Defensive Back
<b>Jedi Gibson</b>	2nd Team All District Running Back
<b>Ty Harrigan</b>	2nd Team All District Offensive Lineman Honorable Mention All District Defensive Lineman Academic All State
<b>Trey Myers</b>	Honorable Mention All District Linebacker
<b>Henry Wooldridge</b>	2nd Team All District Offensive / Defensive Lineman
<b>Coaches</b>	Mark Malcolm, Ed Barry, Kris Briggs, Kevin Burnett, Phillip Carroll, Chase Inman, Tana Patrick, Marco Rivera

### Girls Cross Country (TAPPS 4A)

### Boys Cross Country (TAPPS 4A)

<b>Coaches</b>	Cecil Young, Michael Wiloughby
----------------	--------------------------------

### Varsity Volleyball (TAPPS 4A-3)

<b>Isabella Phan</b>	2nd Team All District
<b>Chandler Tolbert</b>	2nd Team All District
<b>Jesi Roberts</b>	Honorable Mention All District
<b>Coaches</b>	Harry Keane, Windy Barron



## Shelton Spirit

**Chargerettes** fared well January 19th with Texas Association of Parochial Schools (TAPPS) Division II honors.

<b>Kathryn Brockette</b>	Honorable Mention All State
<b>Ella Cohen</b>	2nd Team All State, Academic All State
<b>Tessa Davidsohn</b>	1st Team All State, Academic All State
<b>Annie Skaggs</b>	1st Team All State, Academic All State
<b>Sydney Stewart</b>	2nd Team All State
<b>Annie Skaggs</b>	Division Rating 1 for Solo
<b>Team</b>	Division Superior Rating at State
<b>Coaches</b>	Christina Rosen, Georgana Jinks
<b>Spirit Organization Director</b>	Debbie Brooke



Varsity Cheer won 4th in State at TAPPS Competition.

<b>Maisie Doerr</b>	1st Team All State
<b>Shae Galardi</b>	1st Team All State, Academic All State
<b>Maddie Orendain</b>	2nd Team All State
<b>Coaches</b>	Meredith Mathews, Britt Mitchell



## Winter and Spring Sports

Soccer, Basketball, Track, Golf, Swim, Tennis, Baseball to be reported year-end

**BELIEVE COMPETE FINISH!! #bcf #gochargers**

# ALUMNI CONNECTIONS

**Chuck Locke**, Director of Alumni Relations and Community Engagement, Middle School Football and Baseball Coach



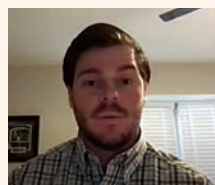
The impact of the COVID-19 situation has altered almost every aspect of our world. Schools were forced to go to Plan B with everything from learning to sports to all kinds of gatherings. Shelton Alumni and Exes were also impacted in many areas. Reunions and tours of the new campus were cancelled as far back as last March and we plan to move those events forward to 2021. Stay tuned and stay connected for upcoming events and activities.

## College and High School Graduates

The High School Seniors of 2020 finally got to have an official graduation in July at the Hillcrest Campus. Many of our college graduates of 2020 were forced to have video graduations since most colleges would not host large gatherings.

## Recent College Graduates

<b>Shelby Brand</b>	University of Georgia
<b>Becca Burroughs</b>	Abilene Christian University
<b>Hope Curtis</b>	Concordia College
<b>Brandon Douglas</b>	University of Texas
<b>Cassidy Duan</b>	University of North Texas
<b>Trigg Edwards</b>	Southern Methodist University Masters
<b>Aidan Eefting</b>	University of North Texas
<b>Sam Feroze</b>	University of Arizona
<b>Maddie Greenberg</b>	University of Oklahoma
<b>Alex Ikard</b>	Texas Tech University
<b>Lauren Jenkins</b>	University of Arkansas
<b>Mary Judge</b>	Schreiner University



Nathan Patton on recent alumni zoom presentation

<b>Alex Maese</b>	University of North Texas
<b>James Mitchell</b>	Oklahoma State/Kansas University PHD
<b>Nathan Patton</b>	University of Dallas
<b>Sam Roach</b>	Texas Christian University
<b>Zach Schwartz</b>	University of Oklahoma
<b>Madeline Stoneham</b>	Abilene Christian University

## In Memoriam

Shelton unfortunately shares news of the passing of a few special persons who walked our hallways in the past. Our thoughts and prayers go with their families and friends.

**Stephen Hargrove** - Class of 2005

**Nick La Mastra** - Graduate of 2009

**Michael Bailee** - Class of 2014



Stanhope Denegre is new Dad

## New Kids on the Block

**Stanhope** (Class 2007) and **Katie Denegre** welcomed O'Connor Ross Denegre (L)

**Adam** (Class 2000) and **Tiffany Webb** welcomed Birdie Ann Webb

## Engaged

**Maddie Greenberg** (Class 2016) and **Zach Schwartz** (Class 2017)

**Caroline Keehn** (Class 2015) and **Josh Dickerman**

**Brooke Lamothe** (Class 2009) and **Torrey Frank Theall**



Frank Theall and Brooke Torrey Lamothe

## Where They Are/What They're Doing



**Gabriella Greif** (Class 2010) has opened a mobile concierge physical therapy practice in Dallas, after receiving bachelor's and doctorate from Northwestern University.

**David Harrel** (Class 2000) is COO of Durkin Enterprises, LLC, and is involved in a major urban adaptive development in old downtown Richardson.



## Got News?

One of the best parts of my job is keeping up with Shelton students and alumni. If you want to do the same, learn about recent news of engagements, marriages, births, careers and memorials through the weekly postings on June Shelton Alumni Facebook page. Or Contact Coach Locke at [clocke@shelton.org](mailto:clocke@shelton.org)



# OFF THE SHELF LIBRARY UPDATE

Kelli Yonker, Library Media Coordinator

Now more than ever, Shelton libraries and media specialists are collaborating with teachers and students to support learning opportunities with books, digital resources, technology and much more.

## Facts and Figures

Every year a significant portion of the Shelton Library budget is used to provide databases for research purposes. These databases allow students 24-7 access to information for curriculum needs which is more critical than ever. We have 25 databases available with over 350,000 searches by students and staff. This is an increase of 32,000 searches from last year. Popular examples include PebbleGo and Tumblebooks (Elementary) and World Book and Facts on File (Secondary).

## Note These Numbers

*Did You Know ...*

*that one month's average  
circulation is 2,249 items,  
with 1,120 patrons?*

## Take note of these other numbers:

Circulation numbers:  
Total catalogued items **56,501**

**56** Books per student  
American Library Association recommends 18  
Texas recommends 8

Secondary: **27,513**  
books and catalogued items

Elementary: **29,091**  
books and catalogued items

**\$1,500** Online Book Fair  
raised this year



(L to R) Kelli Yonker, Mary Drexler, Marissa Montgomery, Margaret Simmons

## Library Staff

<b>Kelli Yonker</b>	Library Media Coordinator and Upper School Librarian
<b>Mary Drexler</b>	Early Childhood Librarian
<b>Marissa Montgomery</b>	Upper Elementary Librarian
<b>Margaret Simmons</b>	Middle School Librarian

# STAFF STUFF

## Welcome on Board

Shelton welcomed the following new employees for the 2020-2120 academic year:

Shannon Bell	Lower School
Samone Briscoe	Finance Accounting Associate
Laura Calley	Upper School
Carrie Crutcher	Finance Accounting Associate
Amy Delaney	Middle School
Candace DeWaal	Upper Elementary
Kristi Dow	Upper Elementary
Karen Ferguson	Lower School
Gretchen Goldstucker	Lower School
Marianne Guzman	Lower School
Evan Hampton	Upper School
Ashley Heath	Middle School
Kyle Hughes	Lower School
Amie Jennings	Capital Campaign Manager
Tiffanie Keys	Middle School
Mike Lagattuta	Upper School
Shelly Lloyd	Director of Volunteer Relations and Events
Susan Manguera	Middle School

MaryAnne Mathews	Upper Elementary
Nya Matthews	Middle School
Christina Miller	Middle School
Marissa Montgomery	Library Media Specialist
Eden Moore	Middle School
Alayna Mosteller	Annual Fund Coordinator
Blythe Mundlin	Upper School
Taiesha Olden	Athletics Administrative Assistant
Marco Rivera	Acting Athletics Director
Abby Rodriguez	Upper Elementary
Ginnette Serrano	Upper Elementary
Denise Smith	Middle School Administrative Assistant
Katelyn Spain	Middle School
Ana Maria Teodorescu	Upper Elementary
Rob Traeger	Athletics Upper School
DeBryan Tyson	Upper School
Shelly Whitfield	Upper School

In addition to new staff, several returning employees have new roles:

<b>Sally Baird</b>	Upper School Teacher
<b>Laura Berend</b>	Administrative Associate and Parent Relations Liaison
<b>Mellany Barnett</b>	Associate Head of School, Assistant Head of Middle School
<b>Amy Cushner</b>	Associate Head of School, Head of Upper Elementary School
<b>Patricia Gallaher</b>	Assistant Head of Middle School
<b>Zac Ladd</b>	Assistant Head of Upper School, Dean of Students
<b>Wil Matthews</b>	Assistant Dean of Students, Upper School
<b>Meghan Miller</b>	Director, Testing Department
<b>Jessica Sudler</b>	Lower School to Upper Elementary Faculty
<b>Consuela Teague</b>	Executive Assistant, Outreach & Training
<b>Lisa Tyler</b>	Head of Middle School

## You Did It!



Drive-by for parents, greeted by Shelton staff



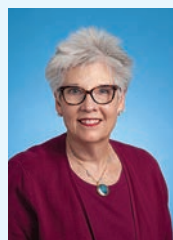
(L to R) Ahren Willms, Corey Smith, Eddie Moreno, Tina Larson, Chris Brendel

## SPARK Awards Announced for 2019-20

Six employees were the recipients of the 2019-2020 Shelton Parents' Association Recognition Kudos (SPARK) Award. They were announced at the year-end staff appreciation event, this year held via Zoom. Each awardee received a SPARK crystal award and a check for \$500 from SPA representative **Emily Touchstone**. Winners were **Amie Moyer** (Lower School), **Dyana Payne** (Upper Elementary), **Cheryl Doerr** (Middle School) and **Wil Matthews** (Upper School). All-Around winner was Shelton's Technology Department comprising **Tina Larson, Chris Brendel, Eddie Moreno, Corey Smith** and **Ahren Willms**.



**SPARK AWARD**



Amie Moyer



Cheryl Doerr



Dyana Payne



Wil Matthews



# TECHNOLOGY TRENDS

Tina Larson, Director of Technology

## The Technology Team continues to support Shelton's four entities—School, Evaluation Center, Speech Language Hearing Program, and Outreach & Training.

All was business as usual until early March 2020, when the unlikely possibility of a shutdown due to COVID-19 became a real possibility and, ultimately, the reality. The Technology Team quickly put plans in place for teacher, student, and parent training. Google Classroom was deployed for students in grades 3-12, while Seesaw was deployed for students EC-2nd. Technology support hours were increased and remote support software was implemented. While the learning curve was steep, teachers, students, parents, and staff adapted and at-home work and learning ensued. In May, the Technology Team was awarded a 2020 Spark Award for going above and beyond.

## New Campus News

Our move to the tech-ready Preston Road Campus allowed a successful implementation of blended learning - i.e. concurrent on- and off-campus learning. This model would not have been possible at the Ward (Hillcrest Road) Campus without a large investment in the infrastructure, nor would it have been possible without the generosity of a donor who purchased a Mevo Camera for every classroom, as well as an iPad for every teacher. The end result is an environment in which students may move between on- and off-campus learning with little disruption.

Many of these efforts, initially driven by a pandemic, will long bear return on investment of time, energy and resources. Everyone has learned much and relied increasingly on technology this past year. The Technology Team was challenged, invigorated and rewarded by facilitating a part of the process.

## Preston Campus at a Glance

**80+** miles of cable  
(fiber and copper)

**State-of-the-art network configuration**

**An Interactive Flat Panel** (SmartBoard)  
**in every classroom**

**A full-time Technology Integration Specialist** (Chris Brendel) **to lead, coach, and innovate**

**1,700+** devices  
managed by outstanding computer specialists  
**Eddie Moreno, Corey Smith**  
and **Ahren Willms**

- Computers
- iPads
- Mevo Cameras
- Interactive Flat Panels (SmartBoard)
- Printers



Tina Larson  
Director of  
Technology



Chris Brendel  
Technology  
Integration Specialist



Eddie Moreno  
Computer Systems  
Specialist



Corey Smith  
Computer Systems  
Specialist



Ahren Willms  
Computer Systems  
Specialist

# MISSION STATEMENT

Shelton on a mission  
a school and resource center dedicated to  
— making a difference —  
by serving and empowering the lives of  
— students who learn differently —  
Because Not All Great Minds Think Alike



# VISION STATEMENT

— a world model of education —  
for  
— individuals who learn differently —  
through  
Education — Evaluation — Therapy  
Research — and — Outreach





# ANNUAL REPORT OF GIFTS

Shelton School and Evaluation Center

June 1, 2019 - May 31, 2020

Annual Fund  
Endowment  
Financial Aid

Heritage Society  
Matching Gifts  
Parents' Association Gifts

Designated Gifts  
In-Kind Gifts  
Delphi Society

*Since 1976, Shelton has been blessed with gifts that have helped us make the difference in a student's life. We are grateful to all who have given a gift of any type. No return on investment will ever be greater than that of a child's education.*

*Your gifts make it possible for our amazing students to achieve great things.*

This Annual Report reflects gifts received between June 1, 2019 and May 31, 2020. We have made every effort to give proper credit to all who have contributed to the Shelton School during the 2019-2020 fiscal year. We regret any errors or omissions and request that any such oversights be reported to the Development Office. Thank you to everyone who contributed to this report.

# BOARD OF TRUSTEES 2019-2020



Front row (L to R): Nancy Diebolt, Diane Byrd, Patti Pace, Suzanne Stell, Heather Hunt Graham, Glen Brown, Bill Rapier  
 Second row: Holly Vitullo, Joyce Pickering, Kelli Valade, Bobbie Sparks Williams, Janice Ryan, Tommy Gilbreath, Jr.,  
 Third row: Keith Williams, David Helffrich, Gary Webb, David F. Martineau, Bert Blair, Benton Markey, Ken Hughes  
 Back row: Chuck Dannis, Boots Reeder, Leon Kaplan, Ted Casey, Phillip Wiggins, Chuck Rubin, Keith Conlon, Christopher Dreiling, Win Bell, Crozier Brown

## Executive Committee

Chairman of the Board	<b>Gary L. Webb</b>
Vice Chairman	<b>Paul Neubach, M.D.</b>
Chairman Emeritus	<b>James B. (Boots) Reeder</b>
Executive Director/CEO	<b>Suzanne Stell</b>
Executive Director Emerita	<b>Joyce S. Pickering, Hum.D.</b> (ex-officio Member)
Secretary	<b>Leon Kaplan</b>
Treasurer	<b>Glen Brown</b> (ex-officio member)
Additional Members	<b>Benton W. Markey</b> <b>David Martineau</b> <b>Holly Vitullo</b> <b>Teresa L. West</b>

## Trustees

<b>Edwin S. Bell</b>	<b>Edward J. Heffernan</b>
<b>Bert Blair</b>	<b>David T. Helffrich, Jr.</b>
<b>J. Crozier Brown</b>	<b>Kenneth J. Hughes</b>
<b>Diane Byrd</b>	<b>Charlotte Jones</b>
<b>Theodore R. Casey</b>	<b>Ken Luce</b>
<b>William Keith Conlon</b>	<b>Barbara Novotny</b>
<b>Charles G. Dannis</b>	<b>Patricia A. Pace</b>
<b>Nancy Diebolt</b>	<b>William Frederick Rapier</b>
<b>Jennifer Dix, PhD.</b>	<b>Chuck Rubin</b>
<b>Christopher K. Dreiling, M.D.</b>	<b>Janice Ryan</b>
<b>Christopher Geymuller</b>	<b>Kelli Valade</b>
<b>Tommy Gilbreath, Jr.</b>	<b>Phillip F. Wiggins</b>
<b>Heather Hunt Graham</b>	<b>Bobbie Sparks Williams</b>
<b>Susan Griffiths</b>	<b>Keith Williams</b>
<b>Clifford Hahne</b>	

*Shelton is grateful to Board members  
 for their vision, service and countless  
 expressions of support.*



# REPORTS OF GIFTS AND SOURCES 2019-2020

June 1, 2019 - May 31, 2020

Type of Donation	Amount
Annual Fund/Designated	1,005,153
Legacy Foundation	97,000
Parents' Association	578,300
New Campus	7,725,000

## The Return on the Investment: Successful Shelton Students

We are grateful for all Shelton supporters and donors. Through the generous gifts of many, we are able to provide a fine educational model to many students. Donors may wonder about the return on their investment. We witness the return on their investment every day—in the young student who gains self-esteem, the teen who learns team spirit, the parents whose child no longer struggles but thrives, and the graduate who confidently leaves Shelton to become a citizen of the world. We celebrate the return on our donors' investments with gratitude.



**Lindsay Kaplan**  
at DePaul University, Chicago,  
The Theatre Center School  
Majoring in Theatre Management



**Sam Korman**  
at Oklahoma State University  
Majoring in Mechanical and Aerospace Engineering



**Ronak Patel**  
at Stephen F. Austin



**Jack Wilson**  
at The University of Oklahoma  
Majoring in Petroleum Engineering



**Sami Roberts**  
at Texas A&M University  
Majoring in Communications

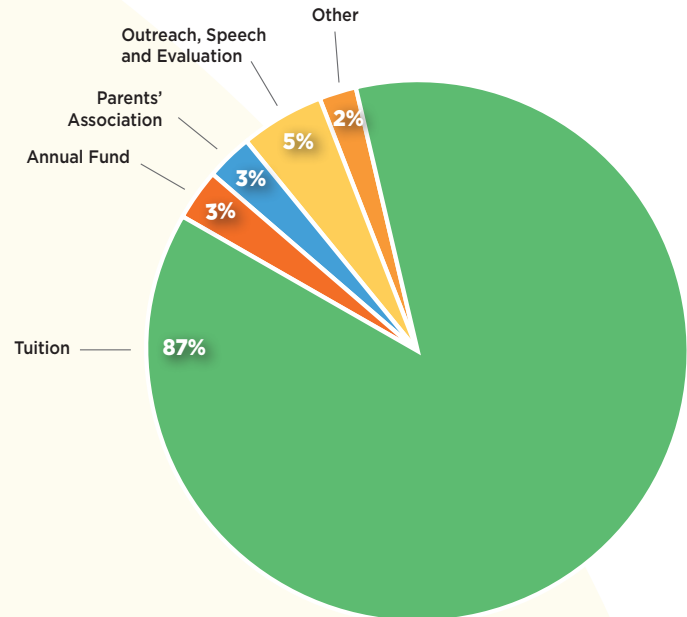
*We cannot thank you enough for a successful first semester! We know it has been extraordinarily hard to do in-person school during 2020. You have had to re-invent how school is done in every aspect. Our boys come home happy and they are thriving during this time, and it's all because of you. Thank you for persevering and for pouring your heart and soul into making in-person school not only a reality, but a success! There is light at the end of this tunnel, and we just have to keep our heads up and keep moving forward.*

*Shelton Parent*

# REVENUES AND EXPENSES 2019-2020

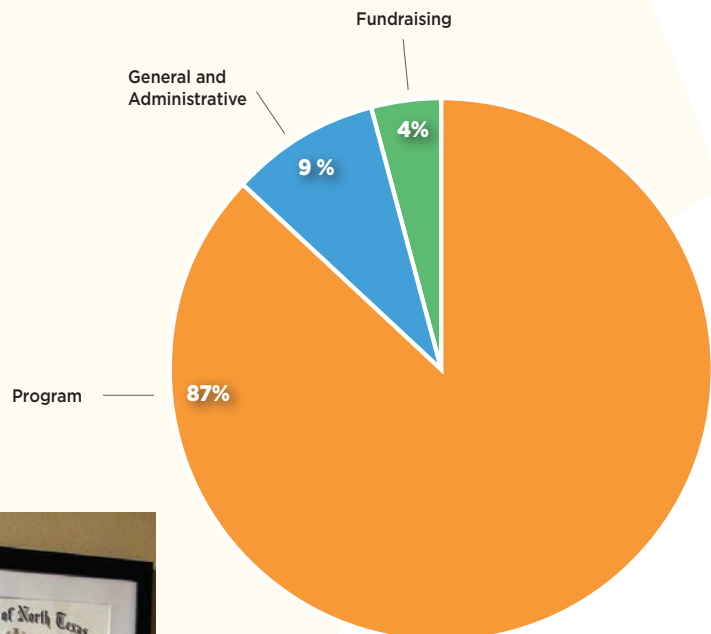
## Revenue

Tuition	87%
Annual Fund	3%
Parents' Association	3%
Outreach, Speech and Evaluation	5%
Other	2%



## Expenses

Program	87%
General and Administrative	9%
Fundraising	4%



### How Do You Compute a Child's School Success? Here's how:

*I also want to thank everyone who helped me in my journey which is a lot of people so I will simply say you know who you are. Also shout out to UNT| UPC, Overflow Denton, and University of North Texas, for hooking me up with some life long friends. Another shout out to June Shelton School & Evaluation Center for helping me become the person I am today. I am blessed to have come as far as I have and there is more to come hopefully so stay tuned.*

*Cullen Kampine  
Posted on his Facebook page*





# SHELTON PARENTS' ASSOCIATION BOARD 2019-2020

## Executive Committee\*

Presidents*	Shelly Lloyd Brandy Stafford
Past Presidents*	Darcy Preheim Jessica Slaven
President Elect*	Chuck Marlett Michelle Rivera
Secretary*	Jennifer Dix
Treasurer*	Lindsay Mayer
VP Communications*	Chuck Marlett
VP Lower School*	Kimberly Kahn
VP Upper Elementary*	Kimberly Lynch
VP Middle School*	Amy Biesman
VP Upper School*	Sonja Skaggs
Corral Chair*	Michelle Rivera
Dads' Club Chair*	Tyson Harmon
Stampede Chairs*	Emily Sarche JoAnna Sudbeck Julie Crozier
Book Fair Chair	Robin Sells Gabrielle Ott
Book Fair Chair-Elects	Robin Sells Gabrielle Ott Alisa Richardson
Boosterthon Chair	Hayle Podesta
Charger Pen Chairs	Lauren Eastburn Megan Carpenter
Communications Project Manager/ VP Communication Elect	Corrie Shores

Communications Advertising/ Graphics Chair	Jill Frady
Community Partners	Lisa Milliken
Holiday Happiness Chair	Gina Rangel
Community Spirit Chair	Lisa Harrigan
Corral Assistant Manager	Karon Jones
Corral Volunteer Chair	Gina Rangel
End of Year Luncheon Chairs	Gabriella Davis Kristie Raymond
Food Truck Chair	Heidi Weinstein-Levy
Grandparents' Day Chairs	Jenny Dougherty Kari Grzych
Hospitality Chairs	Lisa Byrnes
Lunch with Dad Chair	Jame Frey
Moms and Sons Chair	Cat Wall
New Parent Dinner Chair	Dina Brantman
Princess Ball Chair	Jill Price
Staff Appreciation Chairs	Angela Cheves Kristin Elveback
Stampede Treasurer	Michelle Copollino
SPARK Award Chair	Emily Touchstone
Volunteer Chair	Renee Jansen
Welcoming Chairs	Julie Seedig Kinsey Weegar

\*Executive Board Member

## Grade Level Liaisons 2019-2020

### EC/PP

Elle Lopez  
Jennifer Goeres

### 3rd/4th Grade

Jessica Meyer  
Robin Sells  
Renee Jansen

### 7th Grade

Dina Brantman  
Kara Prescott

### 10th Grade

Meg Rockman  
Carrie Eggart

### Primary - 1st/2nd Grade

Liza Collins  
Jennie Jones

### 5th Grade

Alexis Magids  
Elizabeth Wilson

### 8th Grade

Shelley Capriotti  
Tessa Mosteller

### 11th Grade

Holly Vitullo  
Jennifer Dix

### 6th Grade

Mandy Evans  
Elizabeth Jennette

### 9th Grade

Jill Bergus  
Jennifer Thompson  
Debbie Mitchell

### 12th Grade

Melissa Lipshy  
Kim Clay  
Vicky Riley

# THE JUNE SHELTON HERITAGE SOCIETY 2019-2020



The June Shelton Heritage Society honors benefactors who have contributed \$50,000 or more to the needs of the school.

Edward & Wihelmina Ackerman Foundation  
Alliance Data  
Dr. Kenneth Altshuler & Mrs. Ruth Altshuler\*  
Mr. & Mrs. Shy Anderson  
Anonymous  
Mr. & Mrs. Tony Apollaro  
The Mary C. Ashby Estate  
Mr. & Mrs. F. William Barnett  
Mr. & Mrs. Benny Barton  
Dr. & Mrs. Ernest E. Beecherl  
Lynn & Win Bell  
Mr. & Mrs. Paul Billings  
Mr. & Mrs. Bert Blair  
Mr. & Mrs. James Boney  
Mr. & Mrs. Kevin Boscamp  
The Bosque Foundation  
Mrs. Peggy Braecklein  
Dr. James Brodsky &  
Dr. Cynthia Schneidler  
The Brodsky Foundation  
Melissa & Stephen Brooks  
Rita & Crozier Brown  
Patti & Glen Brown  
Mr. & Mrs. D. Harold Byrd III  
Mrs. Jane Browning\*  
The Jane & Bill Browning Family  
Mr. & Mrs. William H. Bulmer  
The Cantrell Family  
Mr. & Mrs. Thomas Carlson  
Katherine C. Carmody Charitable Trust  
Mr. & Mrs. Mark Carney  
Mr. & Mrs. Royal Carson III  
Mr. & Mrs. Robert Carter  
Mr. Ted Casey & Mrs. Angela Wommack  
Mr. & Mrs. Clay Cash  
Mr. & Mrs. Richard Cheatham  
The Chilton Foundation  
Barbi & Scott Cohen  
Mr. & Mrs. Leonard Collins  
Mr. & Mrs. Peter Collins

Communities Foundation  
The Conlon Family  
The Constantin Foundation  
Mr. & Mrs. Harold D. Cook  
The Corrigan-Goddard Foundation  
Jennifer & Tony Cox  
Hope & Gene Cramm, Jr.  
Mr. Stuart Cutshall\* &  
Mrs. Hannah Cutshall  
The Dallas Foundation  
The Dannis Family  
The Dardick Family  
Mr. & Mrs. J. Stewart Dawson  
Mr. Joe M. Dealey  
Beth & Greg Delagi  
Ms. Paula Dennard\*  
Mr. Steven DeWolf\* & Mrs. Tammy DeWolf  
Ms. Nancy Diebolt  
The Discovery Foundation  
Jennifer & Richard Dix  
Dr. & Mrs. Christopher Dreiling  
Mr. & Mrs. Todd Eaddy  
Mr. & Mrs. Mark Eichorn  
Mr. & Mrs. Van Ellis  
Dr. & Mrs. Roger Emerson  
Esping Family Foundation  
The Evans Family  
Mr. & Mrs. David N. Farmer  
Mr. Danny Faulkner, Sr.\* &  
Mrs. Jonelle Faulkner  
The Fenerty Family  
Mr. & Mrs. Charles Fioretti  
Florence Foundation  
Mr. Steve Free  
Free Family Foundation  
Betsy & Jesse Garza  
Kara & Peter Gehan  
Sally & Christopher Geymuller  
Mr. & Mrs. Bennett Glazer  
The Charles B. Goddard Foundation  
Goldman, Sachs & Co. Matching Gift Program  
Jennifer & Thomas Greenlee  
Susan & Evan Griffiths  
Mr. & Mrs. Clifford A. Hahne  
The Patrick & Beatrice Haggerty Foundation  
Fanchon & Howard Hallam  
Mr. & Mrs. James L. Halperin  
Mr. & Mrs. Tim Harrigan  
Mr. John Hawkins  
Ms. Heather Hunt Graham  
Heffernan Family  
Devra & David T. Helffrich, Jr.  
Mr. Jeffrey Heller\* & Mrs. Carol Heller  
Mr. & Mrs. Don Henley  
The Henry Foundation  
Hillcrest Foundation  
Rogers Hipp Family

Hoak Foundation  
Nancy & James Hoak  
Hoblitzelle Foundation  
Mr. & Mrs. Forrest Hoglund  
The Hoglund Foundation  
The Hollman Family  
Mr. & Mrs. Kevin C. Howe  
Mr. & Mrs. Kenneth J. Hughes  
Mr. & Mrs. Hunter Hunt  
Nancy Ann & Ray Hunt  
The Nancy Ann & Ray L. Hunt Foundation  
Suki & Paul Jarzemsky  
Mr. & Mrs. Jerry W. Jones  
Gene & Jerry Jones Family Charity  
Mr. & Mrs. Charles Josephs, Jr.  
Michele Valdez & Gary Kennedy  
The Kincaid Foundation  
Mr. & Mrs. Jerry King  
The Carl B. & Florence E. King Foundation  
Mr. & Mrs. Robert Lavie  
Mr. & Mrs. William Lenox  
Ms. Veronica S. Lewis  
Lightner Sams Foundation, of Dallas  
Shelly & Chris Lloyd  
Ken, Nancy & Andrew Luce  
The J.E. & L.E. Mabee Foundation, Inc.  
Mr. & Mrs. John Madden  
Judy & Benton Markey Family  
Mr. Charles D. Marlett  
David F. & Sara Martineau  
Liz & Ira Matsil  
Mr. & Mrs. Christopher McAdam  
Mrs. Susan McAdam-Weisman  
The McCamey Family  
The McGee Foundation  
Tonya & Charlie McKinney  
The Meadows Foundation  
Ms. Denese Mills  
The Mitchell Family  
Mr. & Mrs. Michael Mitchell  
The Moody Foundation  
Mr. Alan Moore  
Mr. & Mrs. Mike Mullen  
Paul & Vivienne Neubach  
Mrs. Walter Neustadt  
Mr. John Newby & Mrs. Maria "Kiki" Karos  
Mr. & Mrs. Harold Nix  
Ms. Tracy Nix  
Ms. Barbara Novotny  
Mr. Connor Novotny  
Ann & Michael Ochstein  
David & Patti Pace  
The Jonathan Pace Foundation  
Mr. Dennis Parravano\* &  
Mrs. Teresa Parravano  
The Paulos Foundation  
Mr. & Mrs. Trevor Pearlman  
Mr. & Mrs. John Penson\*  
The Vernon Peppard Foundation



Drs. Robert & Joyce Pickering  
 The Joyce Pickering Endowed  
 Scholarship Fund  
 Mr. Lonnie Pilgrim\* & Mrs. Patty Pilgrim  
 Mr. & Mrs. Jack E. Pratt, Sr.  
 The Aileen & Jack Pratt Foundation  
 Mr. & Mrs. Howard Rachofsky  
 Mrs. Lynne Mohamed Raouf  
 The William & Melanie Rapier Family  
 Mr. James (Boots) Reeder  
 Ms. Kristy Robinson  
 Ms. Tori Robinson  
 Mr. & Mrs. Richard R. Rogers  
 Mr. & Mrs. Carl S. Rubin  
 The Rupe Foundation  
 Janice & Will Ryan  
 Mr. & Mrs. Rodger Sanders  
 Rachel Rucker-Schmidt & Jason Schmidt  
 Ms. Susan Schwartz  
 Ms. Melinda Foster Sellers



The Ruth C. & Charles S. Sharp Foundation  
 Mr. & Mrs. Scott Sheffield  
 Shelton Parents' Association  
 Shelton School & Evaluation Center  
 Mr. & Mrs. Anthony Sherman  
 The Harold Simmons Foundation  
 Mr. & Mrs. R. Daniel Slaven  
 Pat & Ray Smerge  
 The Smerge Family Foundation  
 Anne Q. & Brien P. Smith  
 Mr. & Mrs. Emmitt J. Smith III  
 The Sparrow Foundation  
 Stallings Family  
 Tina & Dan Stansbury  
 The Steinhart Family  
 Mr. & Mrs. Gary Stell  
 Mr. & Mrs. Gerald Stool  
 The Edward B. Summerhill Estate\*  
 The Louis T. Swift Foundation  
 Mr. & Mrs. Thomas Swift III  
 Mr. & Mrs. Andrew Teller  
 The Richard & Mary Templeton  
 Foundation  
 Mr. & Mrs. E. Todd Tracy  
 Mike & Jeanie Uhrick  
 Mr. & Mrs. Myron E. Ullman  
 Kelli & Don Valade  
 Dee & Trey Velvin  
 Holly & Lenny Vitullo  
 Wal-Dot Foundation  
 Mr. William C. Ward\* & Mrs. Cindy Ward  
 The Ward Family Foundation



Mr. & Mrs. Gary Webb  
 Terri & Mike West  
 Jennifer & Cory Whitaker  
 Peter & Madeleine White  
 Mr. Peter Wiggins\* & Mrs. Barbara Wiggins  
 Donell & Phillip Wiggins  
 Mr. & Mrs. Zolon Wilkins  
 J. L. Williams Foundation  
 Dr. & Mrs. Craig Williams  
 Bobbie Sparks Williams &  
 J. R. Williams, II, MD  
 Ms. Jonell H. Williams  
 Keith & Stacey Williams  
 The George & Fay Young Foundation  
 The William & Sylvia Zale Foundation  
 Celeste & Kurt Zuch

\* Deceased



## DELPHI SOCIETY 2019-2020

Delphi is a small town in the mountains of Greece where the famous oracle of Apollo supposedly took place, announcing the future. It is a symbol for seeking to know and shape the future.

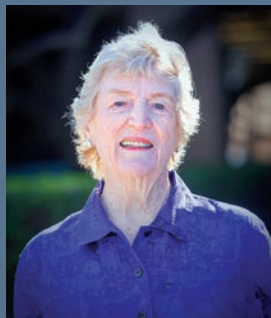
To honor those individuals who seek to shape the future of Shelton School, the Delphi Society was established in 2003. The Society recognizes and thanks alumni and friends of Shelton who have created provisions in their wills or estate plans to benefit Shelton School.

Estate of Mrs. Mary Ashby\*  
 Mrs. Kaye Aylesworth  
 Mr. and Mrs. Edwin Bell  
 Mr. Jerry Chapman  
 Mr. and Mrs. David Farmer  
 Mr. Andrew Frankel and Ms. Janell Eilers

Mr. and Mrs. Kenneth Hughes  
 Mr. and Mrs. David Martineau, Sr.  
 Mr. Ric Middlekauf  
 Drs. Bob and Joyce Pickering  
 Dr. and Mrs. William Ryan  
 Estate of Mr. Edward B. Summerhill\*  
 Mr. William Ward\* and Mrs. Cindy Ward

\* Deceased

# ENDOWMENT GIFTS 2019-2020



## Betty Glasheen Endowed Faculty Fund

Dan & Molly Bresnahan  
Marty Cooley  
Drue Gawel  
Robert Hinds  
Raymond Pittet  
Mr. & Mrs. Gary Stell

## Joseph Wolf Endowed Scholarship Fund

Amanda Conner  
Glen Rummel  
Mr. & Mrs. Gary Stell  
Dudley Wolf



*“Some are bound to die young.*

*By dying young a person stays*

*young in people’s memory. If he*

*burns bright before he dies, his*

*brightness shines for all time.”*

*Author unknown*



## Kierstin Eaddy Endowed Scholarship Fund

Susan Coleman  
Christi Rogers  
Mr. & Mrs. Gary Stell

## Danny Cumiskey Memorial Endowed Fund

Therese Larrabe  
Marie Quintana  
Douglas Rekerdres  
Mark Smerge





# ANNUAL FUND DONORS 2019-2020

## Annual Fund Leadership

### Parent Annual Fund Co-Chairs

Darcy Preheim & Jessica Slaven

### Annual Fund Ambassadors

Emily Chapman  
Kimberly Curvey  
Jennifer Dix  
Jennifer Gampper  
Heather Graham  
Jennifer Greenlee  
Thelma Hall  
Suzette Switzer  
Debbie Myers  
Tracy Nix  
Paige Orth  
Kristal Roberts  
Julie Seeding  
Kristin Strickland  
Holly Vitullo  
Angela Wommack  
Brooke Zasa



### Thank you from Shelton's 2019-2020 Annual Fund Co-Chairs

We surpassed our goal and are so grateful to the Shelton community for generously donating over \$1,000,000 to last year's Annual Fund Drive! Because of your generous giving, our students continue to benefit from our school's excellent teachers and staff who provide outstanding academic programs and enriching extracurriculars in our new state of the art school. All funds donated to the Annual Fund benefit every student at Shelton! Your support furthers Shelton's commitment to engage, enrich and empower our students to become the leaders and achievers of tomorrow.

We were honored to serve as this past year's Annual Fund Co-Chairs, and owe our success to the commitment of our Parents, Teachers, Board and Alumni. It takes consistent, generous, and broad support from our family, friends and community to help Shelton achieve their mission of teaching children who learn differently. The opportunities available to our students at Shelton are life changing. Thank you for your continued support in providing this amazing gift to our students here at Shelton!



SPA co-chairs Jessica Slaven (L) and Darcy Preheim

### Executive Director's Society (\$20,000 & above)

Anonymous  
Mr. & Mrs. Robert Vannuccini  
Mr. & Mrs. Kurt Zuch

### Leadership Council (\$10,000 - \$19,999)

Anonymous  
Mr. & Mrs. Jonathan R. Bond  
Dr. & Mrs. Paul Neubach  
Mr. & Mrs. Robert Craycraft  
Mr. Alan Moore  
Mr. & Mrs. James L. Halperin  
Mr. & Mrs. Kimberley &  
Scott Sheffield  
Mrs. Carol Heller  
Mrs. Ann Moody

### Founder's Circle (\$5,000 - \$9,999)

Anonymous  
Mr. & Mrs. Tommy Gilbreath  
Mr. Ted Casey &  
Mrs. Angela Wommack  
Mr. & Mrs. Daniel Collins

Ms. Michelle Coppolino  
Mr. & Mrs. Linda & Bill Custard  
Mrs. Hannah Cutshall  
Mr. & Mrs. Michael Dardick  
Mr. & Mrs. Todd Eaddy  
Mr. & Mrs. Randall Ebner  
Mr. & Mrs. James Frary  
Ms. Heather Hunt Graham  
Mr. & Mrs. Bill & Cheryl Henry  
Mr. & Mrs. Charles &  
Barbara Hollweg  
Ms. Lyle Jackson  
John & Charlotte Kimberlin  
Mr. & Mrs. Michael Konradi  
Ms. Lesli Levine  
Mr. & Mrs. Benton Markey  
Mack Pogue  
Mr. & Mrs. Van Roberts  
Jay & Sherry Roth  
Drs. Jason & Rachel Schmidt  
Janice Schoellkopf  
Mr. & Mrs. Stephen Shankle  
Shared Studios  
Mr. & Mrs. Brian Sipes  
Ms. Dianne Sztamenits  
Jan Thomson  
Mr. & Mrs. Michael Uhrick  
Mr. & Mrs. Charlie Visconsi  
Inez Watson

### Directors' Club (\$3,000- \$4,999)

Anonymous  
Ben E. Keith Foundation  
Mr. William Blankenship  
Mr. & Mrs. Scott Brady  
Mrs. Geraldine Byrnes  
Mr. & Mrs. Tom Castillo  
Ms. Marian Cline  
Ms. Judy Clymer  
Mr. & Mrs. Tony Cox  
Ms. Patricia Crocker  
Mr. & Mrs. Reuben Davidsohn  
Mr. & Mrs. Philip Durst  
Fannie Mae  
Mr. & Mrs. David Frey  
Mr. & Mrs. James Grace  
Mr. & Mrs. Tim Harrigan  
Mr. & Mrs. David Helffrich  
Mr. & Mrs. Michael Holmes  
Mr. & Mrs. Taylor Hunt  
Mr. & Mrs. Kirk &  
Denice Lipscomb  
Mr. & Mrs. Giovanni  
Nieto-Giovanini  
Dr. & Mrs. Charles Orth  
Paulos Foundation  
Mr. & Mrs. Mike Sawicki  
Mr. & Mrs. Nick Schaeffer  
Mr. & Mrs. Robert A. Sells  
Mr. & Mrs. Dan Stansbury  
Daniel & Terry Taylor  
Mr. & Mrs. Son Tran

### Gold Charger Club (\$1,000-2,999)

#### Anonymous

Ms. Kimberly Aaron  
Steve & Carol Aaron  
Mr. Craig Abbott  
George & Tearesa Adams  
Mr. & Mrs. Michael Alexander  
Michael Alexander  
Mr. & Mrs. Michael Anderson  
Mr. & Mrs. Tony Apollaro  
Mr. & Mrs. David Armour  
Dr. & Mrs. Roy Ashton  
Mr. & Mrs. Aaron Babcock  
Mr. & Mrs. Mark Ball  
Bill & Sue Balthrope  
Mr. & Mrs. Edwin S. Bell  
Mr. & Mrs. Laura Berlin  
Mr. & Mrs. Sam Bloom  
Mike & Susan Bradley  
Mr. & Mrs. Robert  
Brandenberger  
Mr. & Mrs. Robert Brantman  
Todd & Frances Bratton  
Catherine Bruff  
Sherry Buck  
Kaye Burkhardt  
Laura Burnett  
Castle Hills School Foundation  
Mr. & Mrs. Brad Cheves  
Mr. & Mrs. Mark Cooper  
Mr. & Mrs. Geoffrey Crumrine  
Mr. & Mrs. Charles G. Dannis

# ANNUAL FUND DONORS 2019-2020 CONTINUED

Dr. & Mrs. Dan Davis  
Mr. & Mrs. Steve Davis  
Paul Davis  
Stewart & Averille Dawson  
Thomas & Rosemarie Del Core  
Mr. & Mrs. Hugues delaVergne  
Ms. Nancy Diebolt  
Mr. & Mrs. Richard Dix  
Mr. Mark Doom  
Mr. William R. Dorward &  
Dr. Susan McKinney  
Mr. & Mrs. Christopher Dupre  
Mr. & Mrs. Miles Eggart  
Mr. & Mrs. David Farmer  
Betty Finley  
Mr. & Mrs. Jeff Forbus  
Ms. Jennifer Frank-Paramo  
James & Susan Galbraith  
Lorelei Garratt  
Kara Gehan  
Mr. Andrew Gellman  
Mr. & Mrs. Brian Geyer  
Mr. & Mrs. Ross Gilger  
Mr. Mike Goldman &  
Dr. Bridget Goldman  
Drs. Conan Gomez & Dania  
Wierzbicki  
Ruth Griesser  
Mr. & Mrs. Donald Growbowski  
Mr. & Mrs. Greg Groff  
Ms. Joanna Grovenstein  
David Haspel  
Mr. & Mrs. Mark Hayes  
Mr. & Mrs. Lorin Henton  
Mr. & Mrs. Joe Hickman  
Mr. Stephen Hipp &  
Mr. Brian Rogers  
James & Nancy Hoak  
Ms. Angela Horowitz  
Hunt Consolidated  
Jimmy & Sue Irish  
Donald & Susan Jarzemsky  
Mr. & Mrs. John E. Johnson  
Janet Johnson  
Mr. Jeffrey Kaplan &  
Mrs. Lisa Newman  
Mr. & Mrs. Ben Koch  
Chuck & Janice LaBelle  
Mr. & Mrs. Steven Lawrence  
Becky Leffler  
Mr. & Mrs. Marc Lipshy  
Mr. & Mrs. Kenneth Luce  
Courtney & John Madden  
Mr. & Mrs. Scott Magids  
Mr. & Mrs. David F. Martineau  
Mr. & Mrs. James Mathis  
Mr. & Mrs. Ira Matsil  
Mr. & Mrs. Blaine McAnally  
Mr. & Mrs. Michael McCabe  
Roger & Sharon McCabe  
Dr. & Mrs. Gregory Miller  
Mills Uniform Company  
Mr. & Mrs. Russell Mitts

Mr. & Mrs. Russell Moon  
Steve & Betsy Myers  
Julie Niederer  
Mr. & Mrs. Dale B. Nixon  
Mr. & Mrs. Michael Nowell  
Sam & Jan Orendain  
Mr. & Mrs. Scott Palmer  
Angela D. Paulos  
Mr. Robert Pechar & Ms. Que Le  
Mr. & Mrs. Alan Pierce  
Mr. Mick Piper & Dr. Beth  
Kassanoff-Piper  
Mr. & Mrs. Raymond Pittet  
Ms. Anastasia Popova  
Carrie Postolos  
Mr. & Mrs. William Power  
Mr. Jeffrey Prescott &  
Dr. Kara Prescott  
Mr. & Mrs. William Rapier  
Glynn Rasor  
Lee & Charlene Raymond  
Mr. & Mrs. J. Blake Rice  
Celanese Foundation  
Mr. & Mrs. Scott Richardson  
Mr. & Mrs. Marco Rivera  
Mr. & Mrs. Doug Robison  
Mr. & Mrs. Joshua Rothstein  
Larry & Michelle Rutt  
Dr. & Mrs. William Ryan  
Ms. Suzanne Sauder  
Mr. & Mrs. Jon Sayah  
Mr. & Mrs. Andrew Schildcrout  
Dr. James Brodsky &  
Dr. Cynthia Schneider  
Larry Seedig  
Lawrence Siegel  
Mr. & Mrs. Steven Silverman  
Thomas Simmons Jr.  
Mr. & Mrs. Dan Slaven  
Rick & Bettye Slaven  
Mr. & Mrs. Doug Smith  
Brien & Anne Smith  
Mr. David Smith  
Mr. & Mrs. Cole Snadon  
Lee Snadon  
Beverly Snyder  
Dr. & Mrs. Tommy Spain  
Steinhart Family Advised Fund  
Mr. & Mrs. Gary Stell  
Suzanne Stell  
James Baker Group, INC  
Chris Tomasides  
Dr. & Mrs. David Touchstone  
Mr. & Mrs. Mark Vitek  
Ms. Bev Vuckovich  
Mr. Pingying Wang &  
Mrs. Maximilian Antich  
Mr. & Mrs. Mark Wayne  
Mr. & Mrs. Cory Whitaker  
Kirk & Kathleen Williams  
Mr. & Mrs. Brad Willson  
Mrs. Lawrence Wilson  
Philip Wolf

Mr. & Mrs. Travis Wood  
Kathryn Woods  
Mr. & Mrs. Cloyse Woolley  
ORIX Foundation  
Pepsico

## Partner's Club (\$1-999)

Anonymous  
Mr. & Mrs. Greg Adair  
Bill & Jan Adkison  
Mr. & Mrs. Josue J. Aguilar  
Mr. & Mrs. Paul Aidala  
Mr. & Mrs. Enis Akgerman  
Ms. Sandy Alarcon  
Judith Albano  
Harry & Julie Albert  
Jayne Allums  
Dr. Stephanie Alotaiba  
Mr. & Mrs. Joe Altadonna  
Neil & Mary Anderson  
Lori Anderson  
Susan Andrews  
Mr. & Mrs. Michael Androvett  
Betsy Arciniaga  
Mr. & Mrs. Shae Armstrong  
Mr. & Mrs. Philip Armstrong  
Mr. & Mrs. Rohit Arora  
Mr. & Mrs. Andrew Ashmore  
Lolly Ashwill  
AT&T Employee Giving  
Campaign  
Bill & Sandra Attmore  
Honey Austin  
Gulzar Babool  
Mr. & Mrs. Raymond Baehr  
Mr. & Mrs. Kenneth Baker  
Susan Baker  
Alexander Balko  
Meghan Ball  
Theresa Ball  
Mr. & Mrs. C. William Balthrope  
Kelly Barker  
Jay Barlow  
Casey Barnett  
Liz Barnett  
Mellany Barnett  
Judy Barrett  
Gary Baugh  
Jay Beck  
Mr. & Mrs. Casey Becker  
Christine Bedenbaugh  
Alan Beery  
Mr. Masoud Beheshti &  
Mrs. Theresa Byrne  
Mr. & Mrs. Jay Bengel  
Mr. Earle Bensing  
Laura Berend  
Mr. & Mrs. Jeffrey Bergus  
Mr. & Mrs. Jonathan Bernstein  
Dr. & Mrs. Michael J. Biavati

Kim Bice  
Mr. & Mrs. Adam Bielecki  
Mr. Nicklaus Biewenga &  
Mrs. Hannah Cutshall  
Elaine Biewenga  
Penny Bigbie  
Blackbaud  
Mr. & Mrs. Bert Blair  
Mr. & Mrs. Matthew Blaylock  
Cary Blum  
Jack & Linda Boden  
Firmin Boul  
Ms. Anjanette Boul &  
Ms. Juli Gonzalez  
Ms. Virginia J. Bowers  
Mrs. Susan Bowman  
Boxtops For Education  
Mr. & Mrs. Robert Boyle  
Buddy & Nita Braddock  
Linda Bradford  
Dr. & Mrs. Aaron Bransky  
Troy & Marsha Braswell  
Jim & Beverly Breedlove  
Chris Brendel  
Carol Brock  
Mr. & Mrs. Jeff Brockette  
Lauren Brockman  
Pam Brockway  
The Brodsky Foundation  
Mary Ann Broussard  
Mr. & Mrs. J. Crozier Brown  
Glen Brown  
Theresa Bruno  
Sherry Bryant  
Mr. & Mrs. James Buchanan  
Jim Buchanan  
Mr. & Mrs. William H. Bulmer  
Virgil Burkhardt  
Nan Burnam  
Pamela Busbee  
Mr. & Mrs. Charles Byars  
Mr. & Mrs. D. Harold Byrd  
Mr. & Mrs. William Byrnes  
Lisa Byrnes  
Linda Caldwell  
Jackie Capra  
Judy Carpenter  
Mr. & Mrs. Jonathan Carriwer  
Bitsy & Harold Carter  
Leslie Cashdollar  
Tris Casillas  
Sydney Cessna  
Mr. & Mrs. Steven Chapman  
Gwen Chapman Ziegler  
Candise Chatman  
Siew Chen  
Mr. & Mrs. Trey Christensen  
Eunice Christman  
C-III Asset Management LLC  
Mr. James Clark &  
Ms. Lynne Collier-Clark



Mr. William Cleary &  
Mrs. Julie Malanoski  
Dr. & Mrs. Joseph Clifford  
Larry & Judie Cline  
Coca-Cola  
Nancy Coffman  
Mr. & Mrs. Scott Cohen  
Ronnie & Dan Cohen  
Mr. & Mrs. William Coin  
Mr. Chris Cole &  
Mrs. Laurie Sprouse  
Dr. Robert Collier &  
Ms. Kris Keesy  
Rebecca Collins  
Kay Collins  
Claire Collins  
Susan Collins  
Mr. & Mrs. Brian Colwill  
Alison Conger  
Mary Connolly  
Christi Contreras  
Charles & Jeannine Cook  
Gloria Cook  
Jackie Cook  
Mr. & Mrs. Bill Cook  
Mr. & Mrs. Arthur Cooper  
Bill & Jane Corbellini  
Mr. & Mrs. Federico Cornejo  
Mr. & Mrs. Todd Cornelius  
Suzanne Crawford  
Lee & Nancy Crisler  
Mr. & Mrs. Michael Curvey  
Mr. & Mrs. Chris Cuzalina  
Mark & Laura Davidson  
Malcolm & Lois Davidson  
Alan & Patricia Davis  
Marshall Davis  
Jennifer Davis  
Chris & Licia Dawe  
Mr. Iain Day &  
Ms. Christina de Leon  
Mr. & Mrs. Jim Dayton  
Mathieu Debic  
Mr. & Mrs. Neil Degani  
Mr. & Mrs. Thomas Del Core  
Wendy Deppe  
Mr. & Mrs. Randy Deschenes  
Brian & Anne Dethrow  
Margaret DeTullio  
Glenn & Dahl Dickey  
Sally Fryer Dietz  
Courtney Dios  
Larry Dix  
Mandy Dockweiler  
Melissa Dodd  
Mr. & Mrs. Dahlem Dodson  
Cheryl Doerr  
LuAnn Dolly  
Mrs. Alexis Dopson  
Mickey & Mary Jo Dorn  
Mr. Adam Dougherty &  
Dr. Jenny Dougherty

Mr. Andrew Doughtie  
Dr. & Mrs. Daniel Dow  
Jennifer Drake  
Mimi Drew  
Mary Drexler  
Claire Duesing  
Jenny Duncan  
Jacqueline Dunworth  
Rich & Nancy DuVall  
Ebby Halliday Advantage  
Program  
Maribeth Ebner  
Jennifer Eckert  
Mr. & Mrs. Mark Edmisten  
Lauren Edwards  
Mr. & Mrs. Mark Ehrenreich  
Fran & David Eisenberg  
Philanthropic Fund of the Dallas  
Jewish Community Foundation  
Dr. & Mrs. Bryan Elvebak  
Dr. & Mrs. Joshua Emmett  
Rachel & Michael Emmett  
Ericsson Community  
Dan Esmon  
Bill & Heather Esping  
Maggie & Marty Evans  
Libby Evans  
Bernard & Andrea Falk  
Ms. Michelle Fallon  
Gregory Farnsworth  
Susan Feick  
Ernest & Barbara Feldgus  
Mr. & Mrs. Matthew Feldman  
Mr. & Mrs. Richard Ferro  
Jerry Feters  
Bruce & Cynthia Fick  
Robert & Judith Finkelman  
Charlotte Fisher  
David Fletcher  
Elgia Florianic  
George & Carole Floyd  
Mrs. Elizabeth Forgan  
Christy Fowler  
Mr. & Mrs. Kevin Frady  
Mr. Richard S. Frankl  
Ms. Shelley Frankl  
Laurie Frey  
Howard & Sandra Frysh  
Mr. & Mrs. Ryan Fulton  
Mr. & Mrs. Russell Fusco  
Ms. Janet Gadol  
Mr. Jeff Galbraith  
Patricia Gallaheer  
Mr. Matthew Garratt  
Drue Gawel  
Mr. & Mrs. Richard Genovese  
Irma George  
Laura Gershenson  
Dr. Fred Ghali &  
Dr. Tessa Anderson  
Amanda Gildersleeve  
John & Susan Gilger

Mr. & Mrs. Larry Gingold  
Brett & Jill Giroir  
Betty Glasheen  
Harold & Rita Gold  
Sue Goldston  
Sara Golieb  
Donna Gonzalez  
Liz Gonzalez  
Mr. John Goodnow  
Ms. Laura Gordon  
Kathleen Goree  
Sharon & Frank Graham  
Ms. Kal Grant  
Mary Grant  
Tina Graves  
Great American Opportunities  
Mr. Jason Green &  
Mrs. Lana Shvarts  
Deborah Brown Grissen  
Richard Groff  
Mr. & Mrs. Todd Grzych  
Dr. & Mrs. Daniel Gunn  
Hal & Betsi Gunnerson  
Mr. & Mrs. John Gura  
Laurie Guthrie  
Mr. & Mrs. Karl Gutttag  
Lynette Hagaman  
Rutledge & Susan Haggard  
Mr. & Mrs. Clifford Hahne  
Ms. Thelma Jane Hall  
Kelly Hall  
Marilyn Hall  
Fanchon & Howard Hallam  
Dr. Ethan Halm &  
Ms. Diana Sheehan  
Smith, Stern, Friedman, &  
Nelms, P.C.  
Tricia Harden  
Jan Harkins  
John & Donna Harley  
Mr. & Mrs. Tyson Harmon  
Dr. & Mrs. Erik Harrington  
Marsha Harris  
Mr. & Mrs. Michael Hartmann  
Shirley Haspel  
Samantha Hawkins  
Adrain Hayes  
Sarah Helffrich  
Bonnie Helm  
Anne Hendrick-Thomas  
Julie & Bob Herman  
Abe & Janet Hershman  
Ms. Debbie Herskovitz  
William & Susan Hess  
Hewlett Packard Enterprise  
Foundation  
David & June Hickman  
Pamela & Jay Hilbert  
Lena Hilbert  
Mr. & Mrs. James Hildenbrand  
Mr. & Mrs. Robert Hinds  
Ray Hodge



Former Shelton student Holt Haynsworth now school's yearbook photographer

Kathryn Hodge  
John Hodges  
Mr. & Mrs. Matthew Hoffer  
Barbara Horowitz  
Mr. & Mrs. Frank Houseman  
Clay Houston  
Jean Huddleston  
Mr. & Mrs. John Hudson  
Mr. & Mrs. Kenneth J. Hughes  
Drs. Carroll & Linda Hughes  
Anné Hughes  
Doug & Ann Hunt  
Dr. Jodie Hurwitz  
Vanette Hutcheson  
Gloria Inlander  
Mr. John Innes &  
Dr. Kristen Innes  
Mr. & Mrs. David Jackson  
Mr. & Mrs. Mark E. Jacobs  
Mr. & Mrs. Scott Jansen  
Mr. & Mrs. Benjamin E. Jared  
Gwen Jensen  
Nohemy Jimenez  
Georgana Jinks  
Mr. & Mrs. Randy G. Johnson  
Mr. & Mrs. Steve Johnson  
Ronald & Sharon Johnson  
Lori Johnson  
Mr. & Mrs. Charles Jones



Take MY photo

# ANNUAL FUND DONORS 2019-2020 CONTINUED



Trinity Byars (L) and Caitlyn Groff on signing day

Connie Jones  
 Jones Lang LaSalle  
 Brittany Jones  
 Freddie Jones, Jr.  
 Laine Jones  
 Mr. & Mrs. Charles Josephs, Jr.  
 Mr. & Mrs. Joseph Jouvenal  
 JPMorgan Chase Workplace  
 Giving-Employee Funds  
 Mr. & Mrs. Dan Kahle  
 Rick & Mitzi Kahn  
 Mr. & Mrs. Alex Kamen  
 Dorothy Kanagy  
 Sam & Rosie Kartalis  
 David & Molly Kattes  
 Barbara Katz  
 Gene Keesy  
 Amy Kelton  
 Mr. & Mrs. Ray Kembel  
 Jill Keppler  
 Barron U. Kidd  
 Sandra King  
 Mary C. King  
 Blair King  
 CJ Kinney  
 The Kirschner-Bookatz Family  
 Foundation, a Supporting  
 Foundation of the Dallas  
 Jewish Community Foundation  
 Jay & Eileen Klitsch  
 Linda Kneese  
 Debbie Knox  
 Tobin Knox  
 Patricia Koester  
 Mr. & Mrs. Jeffrey Kollinger  
 Mr. & Mrs. Blake Kresl  
 Steve & Nancy Kress  
 Kroger  
 Peggy Krug  
 Jan Paul Kruger  
 Mrs. Susan Kuddes  
 Mr. & Mrs. Robert Kunovich  
 Sandy Kuntz  
 Terry & Jeff Kurz  
 David & Sara Laizerovich

Anh Lam  
 Jean Lange  
 Tina Larson  
 Mr. & Mrs. Sam Leake  
 Alisa LeBlanc  
 Mr. Francisco Ledesma &  
 Ms. Elizabeth Lopez  
 Charlotte Lee  
 Mr. Brian Lemery &  
 Dr. Elyse Lemery  
 Mark Lerman  
 Mr. & Mrs. Jeffrey A. Leuschel  
 Mr. Ricky Levy & Ms. Heidi  
 Weinstein-Levy  
 Liberty Mutual  
 Amanda Liese  
 Diana Liese  
 Chuck Locke  
 Nicolas & Rosa Lopez  
 Mr. & Mrs. Peter Lorenzen  
 Mr. & Mrs. David Love  
 Courtney Lubbers  
 Mr. & Mrs. Jeff Lurie  
 Ms. Sara Macha  
 Jan & Jack Magids  
 Patsy Mahfouz  
 Mr. & Mrs. Joseph Malanoski  
 Mark Malcolm  
 Mr. & Mrs. Brian Mantzey  
 Mr. & Mrs. James Mantzurani  
 Chris & Genny Mantzurani  
 Dr. & Mrs. Jason Marchetti  
 Aasha Marietta-Coleman  
 Mr. Jason Marina  
 Shedonna Mark  
 Mr. & Mrs. Mark Marshall  
 Charles Martin  
 Dona Martinez  
 Mass Mutual  
 Deborah Massey  
 Mr. & Mrs. John C. Matthews  
 Wil Matthews  
 Mr. & Mrs. Kevin Mattison  
 David Mattison  
 Ms. Alyssa Maxson

Mr. James Allen Mayfield &  
 Mrs. Linda Levy  
 McAfee  
 Mr. & Mrs. Josh McArtor  
 Mr. & Mrs. Shawn McBride  
 Debbie McCabe  
 Becky & Bob McCamey  
 Nancy McCann  
 Mr. & Mrs. Keith McCook  
 Nancy McCord  
 Mr. & Mrs. Mark McCrary  
 Sabrina McCulloch  
 Mr. & Mrs. Kevin McDermott  
 Leonor McGinn  
 Joan McGraw  
 Mr. & Mrs. Tim McSorley  
 Dr. & Mrs. Douglas Menendez  
 Mr. & Mrs. Andrew Metrailler  
 Mr. & Mrs. Steven Meyer  
 Mr. & Mrs. Scott Michaelis  
 Lynn & Carolyn Michaelis  
 Drs. Steve & Lauren Michelsen  
 Microsoft  
 Mr. & Mrs. Donald Miller  
 Mr. & Mrs. Richard Milliken  
 Scott Moize  
 Mr. & Mrs. Ken Monk  
 Mr. & Mrs. Michael Monroe  
 Mr. & Mrs. Jeff Moody  
 Ms. Carrie Moore  
 Charlotte Moore  
 Eddie Moreno  
 Marianne Morris  
 Mrs. Kay Morris  
 Mr. & Mrs. Travis Moss  
 Amie Moyer  
 Patricia Mullins  
 Clint Murchison  
 Mr. & Mrs. Frasher Murphy  
 Ann & Jay Murphy  
 Anne Music  
 Carolyn Myers  
 Lisa Nagid  
 Ken & Sharron Neal  
 Beverly Nedwed  
 Mr. & Mrs. Greg Nelson  
 Mrs. Johanna Nelson  
 Network For Good  
 Neuberger Berman Group  
 Mr. & Mrs. William Neuhoff  
 Ms. Jennifer Neuhoff  
 Delane Newell  
 Jessica Newman  
 Laura Nichols  
 Amanda Nikolopoulos  
 Maria Nikolopoulos  
 Robert Nissen  
 Mr. & Mrs. David Norman  
 Krista Norwood  
 Carol Oakes  
 Oath Inc.  
 Mr. & Mrs. Christopher Ogden

Mr. & Mrs. Walter Olsen  
 Mr. & Mrs. Daniel O'Neil  
 Mr. & Mrs. Michael O'Neill  
 Ms. Shelby Onic  
 Tony & Carolyn Orbegoso  
 Monica Orr  
 Mr. & Mrs. Frederic Ortiz  
 Janet & Luke Ott  
 Mr. & Mrs. Mark Owens  
 Mr. & Mrs. Jerald Pace  
 Don & Marine R. Padgett  
 Ms. Diane Padgett &  
 Ms. Stacey Padgett  
 Mr. Reynaldo Padilla &  
 Mrs. Doyletta Minix  
 Ms. Erin Paisan  
 Richard & Jean Palamar  
 Mr. & Mrs. John Parteli  
 Ms. Jasmine Patel  
 Mr. & Mrs. Mark Patrick  
 Elizabeth Patterson  
 Zach Paxton  
 Robert & Gail Payne  
 Dyana Payne  
 Paypal Giving Fund  
 Mr. & Mrs. Andrew Pena  
 Guillermina Pena  
 Tim & Heidi Perry  
 Susan Perry  
 Mrs. Carol Peterson  
 Sonia Philipson  
 Joyce Pickering  
 Mr. & Mrs. David Pierre  
 Lisa Pitch  
 Mr. & Mrs. John Pitlik  
 Mr. & Mrs. S.H. Pogir  
 Gussie Pokorny  
 Win Pongsakul  
 Danny & Sue Potter  
 Happy Power  
 John Dale Powers  
 Mr. & Mrs. David Primeaux  
 Cheryl Prince  
 Prudential Foundation Matching  
 Gifts Program  
 Peggy Puckett  
 Martin Pulido  
 Mr. & Mrs. Clark Pulliam  
 Sherri Pulliam  
 Peggy Purser  
 Ms. Alba Quinones  
 Mr. & Mrs. John Raleigh  
 Bridget Ralston  
 Mr. Mark Ralston &  
 Mrs. Tricia Heaney  
 Dan & Karen Randall  
 Rev. & Mrs. Paul Rasmussen  
 Raytheon  
 Kathleen Reaves  
 Mr. & Mrs. Josh Redstone  
 Harold & Jill Reed  
 James B. Reeder



Lisa Reese  
 Mr. William Reid &  
 Mrs. Aida Walter-Reid  
 Mr. & Mrs. Douglas Rekerdres  
 Howard & Anita Remus  
 Ms. Vicky Reyes  
 Mrs. Susan Rice  
 David & Mary Lou Richardson  
 Will Riemer  
 Ms. Auna Riggs  
 Beth Riggs  
 Drs. Thomas Ritz &  
 Alicia Meuret  
 Mr. & Mrs. Mark Robbins  
 Marija Roberson  
 Dr. & Mrs. David Roberts  
 Mr. & Mrs. Drew Robertson  
 Ms. Janie Robertson  
 Mr. & Mrs. Rogelio Rodriguez  
 Mr. & Mrs. Lee Roever  
 Mr. & Mrs. Richard Rogers  
 Mr. & Mrs. Zack Rogers  
 Amanda Rollen  
 Christina Rosen  
 Ellen Rosenbaum  
 Mrs. Christene Ross  
 Marilyn & Stanley Rothstein  
 Donald Rowland  
 Mr. & Mrs. Carl S. Rubin  
 Mr. & Mrs. Stuart Rubin  
 Warren & Sherry Rubin  
 Susan Ruff  
 Glen Rummel  
 Hal Ryan  
 Mr. & Mrs. John Sallaway  
 Cliff & Letah Samuelson  
 Lauren Sanders  
 Carol W. & Max M. Sandfield  
 Philanthropic Fund of the  
 Dallas Jewish Community  
 Foundation  
 Rhonda Santoyo  
 Mr. & Mrs. Brian Sarche  
 Sara F. Saver  
 Ms. Marina Sbrochi  
 Dominique Scales  
 Mr. & Mrs. Sam Schachter  
 Mr. & Mrs. S. Andrew Schendle  
 Mr. & Mrs. Jon Schimmels  
 John & Katherine Schlaerth  
 Mr. & Mrs. Wheeler Sears  
 Nancy Seay  
 Mr. & Mrs. Todd Sedwick  
 Ms. Stacey Segal &  
 Ms. Debbie Jenkins  
 Mr. & Mrs. David Serota  
 Mayo & Jeannie Sexton  
 Cathy & Kevin Shade  
 Drs. Abhijit & Neepa Shah  
 Pilar Shankle  
 Ms. Shannon Sharp  
 Karen Shaw  
 Ted & Sherry Sheil

Ms. Betty Sue Sheinberg  
 Debbie Shelton  
 Mr. & Mrs. Joel Sherman  
 Mr. Ray Sherman  
 Anne-Marie Shiflet  
 G-g Shryer  
 Mr. & Mrs. Christopher Shurley  
 Margaret Simmons  
 Mr. & Mrs. Rodney Singleton  
 Judy Skiles  
 Ms. Kelly Slaven &  
 Ms. Jessica Brazeal  
 Mr. Cary Slobin &  
 Mrs. Lauren Kaplan  
 Amanda Smart  
 Norman & Janet Smith  
 Bonita Smith  
 Dana Smith  
 Mr. & Mrs. Richard Smith  
 Mr. & Mrs. Ryan Smith  
 Mr. & Mrs. Shannon Smitherman  
 Mr. & Mrs. Sean Sneathern  
 Mr. & Mrs. David Snyder  
 Mr. & Mrs. Paul Solomons  
 Steve Spencer  
 Teresa Stadelman  
 Mrs. Janice Stae  
 Mr. & Mrs. Ryan Stafford  
 Bob & Jackie Stafford  
 Joan Stansbury  
 Clare Stein  
 Lawrence & Karla Steinberg  
 Ms. Randi Steinhart  
 Claudia Stevens  
 Jennifer Stevens  
 Mr. & Mrs. Dan Stewart  
 Patricia Stewart  
 Mr. & Mrs. Michael Stitt  
 Rachel Stock  
 Mrs. Kristi Stokes  
 Dr. & Mrs. David Strawman  
 Mr. & Mrs. Neill Strickland  
 John & Patricia Stroh  
 Ann Stroth  
 Brenda Sturzl  
 Mr. & Mrs. Luke Stutler  
 Mr. & Mrs. Peter Sudbeck  
 Jessica Sudler  
 Mr. & Mrs. Brian Summerall  
 Vasan Sundaram  
 Susan Sutton  
 Mr. & Mrs. Carl Swan  
 Mr. & Mrs. Jonathan Swartz  
 Mr. & Mrs. Jeff Swearingen  
 Mr. & Mrs. Nicola Tamburrino  
 Mr. & Mrs. Beau Taylor  
 Consuela Teague  
 Bruce & Kathy Tedesco  
 Kelsey Temple  
 Mark & Joan Terstriep  
 Mr. & Mrs. Stewart Thomas  
 Christy Thomas  
 Todd & Xan Thompson

Gary & Liz Thompson  
 Jere Thompson  
 Kendra Thornock  
 TIAA Serves  
 Debbie Tilger  
 Ms. Cheryl Tolbert  
 Mr. & Mrs. Harry Tomasides  
 Mr. & Mrs. Ben Tompkins  
 Dr. & Mrs. Fernando Torres  
 Jeffrey & Fran Toubin  
 Mr. & Mrs. Rene Trevino  
 Janet Trompert  
 Karen Truitt  
 Mr. & Mrs. Scott Tuthill  
 Lisa Tyler  
 Mr. & Mrs. Donald Valade  
 Tabitha Valdez  
 Kelly Van Den Handel  
 Heather Van Houten  
 Nancy Van Zee  
 Anna Vander Pluym  
 Leroy Vego  
 Mr. & Mrs. Dee & Trey Velvin  
 Mr. & Mrs. Michael Viracola  
 Jack & Peggy Vitek  
 Mr. & Mrs. Lenny Vitullo  
 Vizient  
 Mr. Curtis Wales  
 Catherine Walhood  
 Deanna Wallace  
 Jerry & Marlena Warthan  
 Mr. & Mrs. Daniel Washburn  
 Marvel Washington  
 Ms. Kristy Waters  
 Mr. & Mrs. Matt Watson  
 Randa Watson  
 Stephanie Weatherford  
 Mr. Gary L. Webb  
 Ms. Brooke Weidenbaker  
 Mr. Todd Weidenbaker &  
 Dr. Julie Lo  
 Mr. & Mrs. Andrew Weinberg  
 Myron & Jeanette Weiner  
 Drs. Rick & Eleise Weisberg  
 Robert Weisburg  
 Wendy Krispin Caterer, Inc.  
 George Wheeler  
 Mr. & Mrs. Mark White  
 James & Dortha White  
 Judy & Paul Whitman  
 Mr. & Mrs. Leonard Wierzbicki  
 Philip & Irena Wierzbicki  
 Dr. & Mrs. J R Williams II  
 Amber Williams  
 Joni Williams  
 Mr. & Mrs. Keith Williams  
 Mrs. Cindy Willson  
 Mr. & Mrs. John S. Wilson  
 Ms. Kaylyn Wilson  
 Sherry & Robert Wilson  
 Tracy Wilson  
 Mary Wilson-Keener  
 Lisa Winkler



Let new campus landscape begin

Mr. & Mrs. Walter Winthrop  
 Rene & Jimmy Wisch Charitable  
 Fund of the Dallas Jewish  
 Community Foundation  
 Kathleen Wohlegagen  
 Mr. Richard Wojciechowski  
 Mr. & Mrs. Christian Wolf  
 Bill & Charlene Wolf  
 Beth Womble  
 Mr. & Mrs. Brandon Wood  
 Ellen Woodbridge  
 Jim & Claire Woodcock  
 Mr. & Mrs. Scott Woodruff  
 Mrs. Grace Anne Woodruff  
 Martha Woodson  
 Workday  
 Ann Wright  
 Jean Wright  
 Carol Yartym  
 Kelli Yonker  
 Mr. & Mrs. Trey Yost  
 Harvey Yost III  
 Ms. Melanie Young  
 Mr. & Mrs. Joe Zasa  
 Jennifer Zeavin

# FACULTY AND STAFF GIFTS 2019-2020



Mrs. Lori Anderson  
 Mrs. Lolly Ashwill  
 Ms. Honey Austin  
 Ms. Gulzar Babool  
 Mrs. Theresa Ball  
 Ms. Kelly Barker  
 Ms. Liz Barnett  
 Ms. Christine Bedenbaugh  
 Ms. Kim Bice  
 Ms. Penny Bigbie  
 Ms. Carol Brock  
 Ms. Lauren Brockman  
 Mrs. Pam Brockway  
 Ms. Mary Ann Broussard  
 Mr. Glen Brown  
 Mrs. Theresa Bruno  
 Ms. Lisa Byrnes  
 Ms. Linda Caldwell  
 Ms. Leslie Cashdollar  
 Mrs. Tris Casillas  
 Ms. Sydney Cessna  
 Mrs. Gwen Chapman Ziegler  
 Ms. Candise Chatman  
 Ms. Siew Chen  
 Mrs. Nancy Coffman  
 Ms. Susan Collins  
 Ms. Alison Conger  
 Ms. Mary Connolly  
 Mrs. Christi Contreras  
 Ms. Jennifer Davis  
 Mr. Mathieu Debic  
 Mrs. Wendy Deppe  
 Mrs. Margaret DeTullio  
 Mrs. Courtney Dios  
 Mrs. Mandy Dockweiler  
 Mrs. Melissa Dodd  
 Mrs. Cheryl Doerr  
 Ms. Jennifer Drake  
 Ms. Mimi Drew

Mrs. Claire Duesing  
 Mrs. Jenny Duncan  
 Ms. Jennifer Eckert  
 Mrs. Lauren Edwards  
 Mrs. Libby Evans  
 Mr. Gregory Farnsworth  
 Ms. Charlotte Fisher  
 Ms. Christy Fowler  
 Mrs. Laurie Frey  
 Mrs. Laura Gershenson  
 Ms. Sara Golieb  
 Mrs. Liz Gonzalez  
 Ms. Kathleen Goree  
 Mrs. Tina Graves  
 Ms. Laurie Guthrie  
 Ms. Lynette Hagaman  
 Ms. Kelly Hall  
 Ms. Marilyn Hall  
 Ms. Tricia Harden  
 Ms. Marsha Harris  
 Ms. Samantha Hawkins  
 Ms. Adrain Hayes  
 Ms. Sarah Helffrich  
 Mrs. Anne Hendrick-Thomas  
 Ms. Lena Hilbert  
 Ms. Kathryn Hodge  
 Mr. John Hodges  
 Ms. Jean Huddleston  
 Ms. Anné Hughes  
 Ms. Vanette Hutcheson  
 Ms. Gwen Jensen  
 Ms. Georgana Jinks  
 Ms. Lori Johnson  
 Ms. Brittany Jones  
 Mr. Freddie Jones, Jr.  
 Ms. Barbara Katz  
 Ms. Jill Keppler  
 Ms. Lisa King  
 Mr. CJ Kinney

Mrs. Kara Kinney  
 Ms. Linda Kneese  
 Ms. Peggy Krug  
 Mrs. Tina Larson  
 Ms. Charlotte Lee  
 Mrs. Amanda Liese  
 Mrs. Diana Liese  
 Ms. Courtney Lubbers  
 Mr. Mark Malcolm  
 Mrs. Aasha Marietta-Coleman  
 Mrs. Shedonna Mark  
 Ms. Mary Markey  
 Mrs. Debbie McCabe  
 Ms. Nancy McCann  
 Mrs. Joan McGraw  
 Mr. Eddie Moreno  
 Mrs. Amie Moyer  
 Ms. Lisa Nagid  
 Ms. Jessica Newman  
 Mrs. Laura Nichols  
 Mrs. Julie Niederer  
 Ms. Amanda Nikolopoulos  
 Ms. Maria Nikolopoulos  
 Ms. Krista Norwood  
 Ms. Monica Orr  
 Ms. Elizabeth Patterson  
 Mr. Zach Paxton  
 Ms. Dyana Payne  
 Dr. Joyce Pickering  
 Ms. Lisa Pitch  
 Mrs. Cheryl Prince  
 Mr. Martin Pulido  
 Mrs. Peggy Purser  
 Ms. Glynn Rasor  
 Mrs. Kathleen Reaves  
 Ms. Lisa Reese  
 Mr. Will Riemer  
 Ms. Marija Roberson  
 Mrs. Amanda Rollen  
 Ms. Christina Rosen  
 Ms. Susan Ruff  
 Mr. Hal Ryan  
 Ms. Lauren Sanders  
 Ms. Rhonda Santoyo  
 Mr. Dominique Scales  
 Ms. Debbie Shelton  
 Ms. G-g Shryer  
 Ms. Amanda Smart  
 Ms. Bonita Smith  
 Ms. Dana Smith  
 Mr. Steve Spencer  
 Ms. Teresa Stadelman  
 Ms. Clare Stein  
 Mrs. Suzanne Stell  
 Ms. Jennifer Stevens  
 Ms. Rachel Stock  
 Ms. Ann Stroth  
 Ms. Jessica Sudler  
 Mrs. Susan Sutton  
 Mrs. Consuela Teague  
 Ms. Kelsey Temple  
 Mrs. Kendra Thornock  
 Ms. Debbie Tilger

Mrs. Lisa Tyler  
 Ms. Tabitha Valdez  
 Mrs. Kelly Van Den Handel  
 Ms. Heather Van Houten  
 Ms. Anna Vander Pluym  
 Ms. Catherine Walhood  
 Mrs. Marvel Washington  
 Ms. Amber Williams  
 Ms. Tracy Wilson  
 Mrs. Beth Womble  
 Ms. Ellen Woodbridge  
 Ms. Ann Wright  
 Mrs. Jean Wright  
 Ms. Carol Yartym  
 Mrs. Jennifer Zeavin  
 Mrs. Betsy Arciniega  
 Ms. Meghan Ball  
 Ms. Casey Barnett  
 Mrs. Mellany Barnett  
 Mrs. Laura Berend  
 Mr. Chris Brendel  
 Ms. Suzanne Crawford  
 Ms. Mary Drexler  
 Mr. David Fletcher  
 Ms. Patricia Gallaher  
 Ms. Sue Goldston  
 Ms. Donna Gonzalez  
 Mr. Clay Houston  
 Ms. Laine Jones  
 Ms. Amy Kelton  
 Mr. Blair King  
 Mrs. Debbie Knox  
 Mr. Tobin Knox  
 Mrs. Alisa LeBlanc  
 Mr. Chuck Locke  
 Mrs. Patsy Mahfouz  
 Ms. Nancy McCord  
 Ms. Beth Riggs  
 Ms. Karen Shaw  
 Ms. Anne-Marie Shiflet  
 Ms. Margaret Simmons  
 Ms. Claudia Stevens  
 Mrs. Christy Thomas  
 Ms. Karen Truitt  
 Ms. Deanna Wallace  
 Ms. Stephanie Weatherford  
 Mrs. Lisa Winkler  
 Ms. Kelli Yonker  
 Mrs. Joni Williams



Joey Newman ready for action



# ANNUAL FUND | GRANDPARENTS 2019-2020

Anonymous

Steve & Carol Aaron  
Maxwell Horowitz 2026

George & Tearesa Adams  
Oliver Adams-Davis 2026

Bill & Jan Adkison  
Xavier Kunovich 2026

Harry & Julie Albert  
Hayden Hipp 2026  
Ellie Hipp 2029

Jayne Allums  
Anne Pierce 2025

Neil & Mary Anderson  
Alex Anderson 2026  
Luca Anderson 2030

Bill & Sandra Attmore  
Lily Attmore 2023

Raymond & Lynne Baehr  
Avery Viracola 2023

Susan Baker  
Alexander Winston 2024

Alexander Balko  
Luc Reichenstein 2023

Bill & Sue Balthrope  
William Balthrope 2020

Gary Baugh  
Madeline Deasy 2023

Alan Beery  
Avery Macha 2025

Elaine Biewenga  
Everett Biewenga 2029

Cary Blum  
Ethan Blum 2026

Jack & Linda Boden  
Lucas Floreano 2024

Firmin Boul  
Maxwell Boul 2027

Mrs. Susan Bowman  
Kennedy Moore 2021

Buddy & Nita Braddock  
Ryan Monk 2023

Mike & Susan Bradley  
Jack Bradley 2028

Troy & Marsha Braswell  
Helena Wood 2026

Todd & Frances Bratton  
John Capriotti 2024

Jim & Beverly Breedlove  
Henry Kauffman 2027

Sherry Bryant  
Reagan Pogue 2024

Jim Buchanan  
Hudson Buchanan 2029

Sherry Buck  
Kathryn Brockette 2024

Virgil Burkhardt  
Grant Miller 2024

Kaye Burkhardt  
Grant Miller 2024

Nan Burnam  
Chase Burnam 2024

Laura Burnett  
Crew Seeding 2029  
Brett Seedig 2025

Geraldine Byrnes  
Lily Byrnes 2027  
Catherine Byrnes 2027  
Anna Byrnes 2027  
Margaret Byrnes 2021

Jackie Capra  
Nate Murphy 2025

Judy Carpenter  
Wyllys Carpenter 2028

Larry & Judie Cline  
Dylan Holliday 2024

Marian Cline  
Macy Cline 2024

Judy Clymer  
Andrew Ogden 2023  
Taylor Ogden 2025  
Parker Holmes 2031

Ronnie & Dan Cohen  
Cooper Shores 2025  
Jackson Shores 2029

Rebecca Collins  
Meredith Dodson 2024  
Davis Dodson 2028

Kay Collins  
Ryan Wierzbicki 2027

Gloria Cook  
Chandler Tolbert 2022

Jackie Cook  
Chandler Tolbert 2022

Bill & Robbie Cook  
Carson Watson 2030

Lee & Nancy Crisler  
Alexander Frank 2023



Fiona Dorward  
Valedictorian 2020

Patricia Crocker  
Leira Rivera 2029

Linda & Bill Custard  
George Hurt IV 2023

Mark & Laura Davidson  
Ainsley Mullins 2025

Malcolm & Lois Davidson  
Zachary Taylor 2022  
Nathan Taylor 2027

Paul Davis  
Will Holmes 2025

Alan & Patricia Davis  
Kate Priest 2026

Thomas & Rosemarie Del Core  
Christopher Del Core 2026

Glenn & Dahl Dickey  
Madeline Bates 2021

Larry Dix  
Gracie Dix 2021

Mickey & Mary Jo Dorn  
Alex De La Cerda 2025

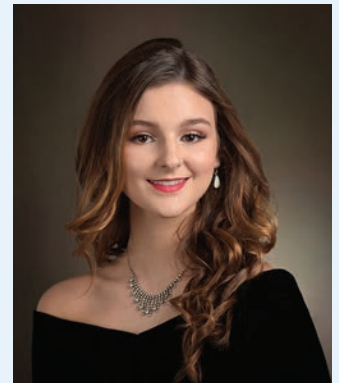
Rich & Nancy DuVall  
Henry Kauffman 2027

Maribeth Ebner  
Ellie Goodno 2026

David & Fran Eisenberg  
Addison Boyle 2026

Rachel & Michael Emmett  
Isaac Emmett 2026  
David Emmett 2031

Dan Esmon  
Benjamin Stafford 2023



Josie Hostin  
Valedictorian 2020

Maggie & Marty Evans  
Luke Baird 2024

Bernard & Andrea Falk  
David Falk 2031

Susan Feick  
Chelsea Feick 2026  
Claire Feick 2022

Ernest & Barbara Feldgus  
Shae Galardi 2021

Jerry Fetters  
Blake Fetters 2023

Bruce & Cynthia Fick  
Kathryn Guerra 2025  
John Guerra 2027

Robert & Judith Finkelman  
Maya Kamen 2024

Betty Finley  
Maggie Tipton 2024

Elgia Florianic  
Finley Florianic 2026

George & Carole Floyd  
Wilson Hunt 2030

Howard & Sandra Frysh  
Devyn Norton 2027

James & Susan Galbraith  
Jackson Galbraith 2025

Lorelei Garratt  
Jackson Garratt 2025

Irma George  
Josiah Triggs 2021

John & Susan Gilger  
Ryan Gilger 2026  
Grace Gilger 2028

# ANNUAL FUND | GRANDPARENTS 2019-2020 CONTINUED

Harold & Rita Gold  
Zoe Evangelist 2020

Mr. John Goodnow  
Theodore Matthews 2026

Sharon & Frank Graham  
Ryan Blake 2027

Mary Grant  
Isabella Grant 2020

Ruth Griesser  
Emmy Kaighan 2025  
Matthew Kaighan 2027

Don & Jan Grobowsky  
Kaush Bergus 2023  
Cade Bergus 2025

Richard Groff  
Caitlyn Groff 2021

Hal & Betsi Gunnerson  
Rees Gunnerson 2022

Rutledge & Susan Haggard  
Jonathan Meier 2027

Fanchon & Howard Hallam  
Matthew Hallam 2024

Jan Harkins  
Enzo Wanderley 2032

John & Donna Harley  
Grant Young 2023

David Haspel  
Wyatt Haspel 2029

Carol Heller  
Ford Myers 2025

Bill & Cheryl Henry  
Lauren Ladd 2024

Abe & Janet Hershman  
Eric Hershman 2021

William & Susan Hess  
Athens Aschaffenburg 2020

David & June Hickman  
Stevie Hickman 2026

James & Nancy Hoak  
Jack Power 2022

Ray Hodge  
Ellie Dodge 2021

Charles & Barbara Hollweg  
Carson Watson 2030

Barbara Horowitz  
Eric Hershman 2021

Nancy Ann Hunt  
Cooper Graham 2026

Doug & Ann Hunt  
Wilson Hunt 2030

Gloria Inlander  
Dante Rivera 2019  
Roman Rivera 2020  
Nico Rivera 2023

Jimmy & Sue Irish  
Beau Irish 2028

David & Ginger Jackson  
Jackson Galbraith 2025

Nohemy Jimenez  
Brady Koujoumjian 2027

Steve & Christi Johnson  
Abbey Euting 2021

Janet Johnson  
Catherine Johnson 2025  
Connor Johnson 2028

Ronald & Sharon Johnson  
Parker Eastburn 2029

Connie Jones  
Jones Lundy 2032

Rick & Mitzi Kahn  
Brooke Kahn 2030

Dorothy Kanagy  
Bella Allen 2025

Sam & Rosie Kartalis  
Jackson Young 2021

David & Molly Kattes  
Hudson Cooper 2025

Gene Keesy  
Katherine Keesy 2026

John & Charlotte Kimberlin  
Hayden Goodiel 2021

Sandra King  
Gibson Shurley 2031

Mary C. King  
Meredith Touchstone 2029

Jay & Eileen Klitsch  
Jack Klitsch 2029

Patricia Koester  
Donovan Yost 2032

Steve & Nancy Kress  
Henry Schimmels 2032

Jan Paul Kruger  
Jan Kruger 2024  
Bella Kruger 2027

Sandy Kuntz  
Aiden Kuntz 2021  
Brady Kuntz 2026

Chuck & Janice LaBelle  
Matthew Strickland 2020

David & Sara Laizerovich  
Jordan Laizerovich 2024

Jean Lange  
Jenna McDermott 2021

Becky Leffler  
Josh Leffler 2025

Mark Lerman  
Jesse Serota 2028

Kirk & Denice Lipscomb  
Kirk Deppe 2030

Nicolas & Rosa Lopez  
Iker Ledesma 2032

Jeff & Jeanette Lurie  
Refaela Lurie 2027

Jan & Jack Magids  
Charlie Magids 2027

Joe & Charma Malanoski  
Maggie Cleary 2026  
Madelyn Cleary 2028

Chris & Genny Mantzuranis  
Vail Mantzuranis 2032

Deborah Massey  
Eoin Brendel 2032

David Mattison  
Matthew Mattison 2020

Roger & Sharon McCabe  
Arden McCabe 2024  
Owen McCabe 2026

Leonor McGinn  
Amelia Curtis 2024

Lynn & Carolyn Michaelis  
Hunter Michaelis 2022

Scott Moize  
Lydia Moize 2028

Ann Moody  
Alexis Moody-Dahlberg 2027

Charlotte Moore  
Blake Brady 2020

Marianne Morris  
Brady Kuntz 2026  
Aidan Kuntz 2021

Kay Morris  
Stevie Hickman 2026

Patricia Mullins  
Ainsley Mullins 2025

Clint Murchison  
Isabel Murchison 2030

Ann & Jay Murphy  
Nate Murphy 2025

Anne Music  
Wyatt Haspel 2029

Steve & Betsy  
Owen Myers 2026

Ken & Sharron Neal  
Jack Grace 2025

Beverly Nedwed  
Makayla Sherman 2023

Johanna Nelson  
Maximilian Innes 2024

Delane Newell  
Charlie Kline 2033

Dale & Karen Nixon  
Kiley Nixon 2032

Carol Oakes  
Rider Harrington 2023

Dan & Patti O'Neil  
Zach Ryan Heisz-O'Neil 2025

Tony & Carolyn Orbegoso  
Lily Attmore 2023



A work in progress



Sam & Jan Orendain  
Madison Orendain 2021

Janet & Luke Ott  
Luke Ott 2025

Don & Marine R. Padgett  
Jacob Padgett 2021  
Hunter Padgett 2023

Richard & Jean Palamar  
Bond Palamar 2029

Angela D. Paulos  
Dimitri Paulos 2029

Robert & Gail Payne  
Trenton Thompson 2023

Guillermina Pena  
Owen McCabe 2024  
Arden McCabe 2026

Susan Perry  
Cole Osborn 2022  
Jack Osborn 2025

Carol Peterson  
Beatrix Peterson 2025

Mack Pogue  
Reagan Pogue 2024

Gussie Pokorny  
Will Pokorny 2025

Carrie Postolos  
Marki Tomasides 2025

Danny & Sue Potter  
James McDonald 2028

John Dale Powers  
John Austin Powers 2027

Peggy Puckett  
Peyton Frady 2022

Sherri Pulliam  
Ford Pulliam 2029

Bridget Ralston  
Max Ralston 2020

Dan & Karen Randall  
Madison Stevens 2024

Lee & Charlene Raymond  
Nicholas Raymond 2026

Harold & Jill Reed  
Lillian Richardson 2023

Howard & Anita Remus  
Ryan Abernathy 2022

Susan Rice  
Colman Rice 2031

David & Mary Lou Richardson  
Lillian Richardson 2023

Ellen Rosenbaum  
Carter Weisberg 2026

Christene Ross  
Victoria Mitchell 2023

Jay & Sherry Roth  
Jackson O'Donnell 2025

Marilyn & Stanley Rothstein  
Abby Rothstein 2028

Donald Rowland  
Liam Neuhooff 2026

Warren & Sherry Rubin  
Spencer Rubin 2021

Larry & Michelle Rutt  
Baer Schamerich 2029

John & Katherine Schlaerth  
Katherine Williams 2025  
Todd Williams 2027

Janice Schoellkopf  
Whit Emanuelson 2028

Nancy Seay  
Marina Guandolo 2024

Larry Seedig  
Brett Seedig 2029  
Crew Seedig 2025

Mayo & Jeannie Sexton  
Adeline Ulrich 2033

Ted & Sherryl Sheil  
Collin Sheil 2028

Betty Sue Sheinberg  
Jackson Greenman 2021

Ray Sherman  
Makayla Sherman 2023

Lawrence Siegel  
Sloan Armstrong 2031

Thomas Simmons Jr.  
Jack Klitsch 2029

Judy Skiles  
Paul David Slavin 2023

Rick & Bettye Slaven  
Thomas Schaefer 2023

Norman & Janet Smith  
Joe Smith 2022

Lee Snadon  
Liam Snadon 2030

Beverly Snyder  
Phoebe Rupp 2027

Janice Stae  
Karis Shillingburg 2027

Bob & Jackie Stafford  
Benjamin Stafford 2023

Joan Stansbury  
Daniel Stansbury 2020

Patricia Stewart  
Sydney Stewart 2023

John & Patricia Stroh  
Lydia Stroh 2025

Brenda Sturzl  
Molly Morris 2021  
Hudson Morris 2019

Vasan Sundaram  
Sahil Sundaram 2028

Nicola & Livia Tamburrino  
Nicholas Davis 2026

Daniel & Terry Taylor  
Luke Noller 2025

Bruce & Kathy Tedesco  
Brent Venable 2028

Mark & Joan Terstriep  
Thomas Schaefer 2023  
Josie Schaefer 2027

Gary & Liz Thompson  
Trenton Thompson 2023

Jan Thomson  
Ella Houstoun 2020

Chris Tomasides  
Marki Tomasides 2025

Bruno & Pamela Ulrich  
Adeline Ulrich 2033

Nancy Van Zee  
Ellie Goodwin 2020

Leroy Vego  
Carli Michelsen 2020

Jack & Peggy Vitek  
Nathan Vitek 2026

Jerry & Marlena Warthan  
Harper Jones 2031  
Lincoln Jones 2028

Inez Watson  
Ford Jouvenal 2026

Randa Watson  
Grayson Tracy 2021

Myron & Jeanette Weiner  
Hannah Harmon 2020

Robert Weisburg  
Carter Weisberg 2026

George Wheeler  
Matthew Preheim 2025

James & Dortha White  
Garrett White 2022

Philip & Irena Wierzbicki  
Rylan Gomez 2026

Kirk & Kathleen Williams  
Weston Williams 2027

Cindy Willson  
Andrew Willson 2027

Lawrence Wilson  
John Wilson 2020

Sherry & Robert Wilson  
Beckley Wilson 2027

Mary Wilson-Keener  
Drew Macrini 2029

Walter & Jeanette Winthrop  
Benjamin Delagi 2022

Bill & Charlene Wolf  
Jennifer Dayton 2025

Philip Wolf  
Elizabeth Wolf 2028

Jim & Claire Woodcock  
Ryan Kassinoff 2021  
Seth Kassinoff 2021

Kathryn Woods  
Wesley Kirtland 2022

Martha Woodson  
Charles Mitts 2024

Harvey Yost III  
Harrison Yost 2032



# ANNUAL FUND | PARENTS OF ALUMS 2019-2020

Anonymous  
Mr. & Mrs. Michael Alexander  
Ms. Hallie Alford  
Mr. Claiborne Alford  
Ms. Susan Andrews  
Mr. Charles Martin  
Mr. & Mrs. Kenneth Baker  
Mr. & Mrs. J. Raegan Barringer  
Ms. Megan Barringer &  
Ms. Mandy Waller  
Mr. Masoud Beheshti &  
Mrs. Theresa Byrne  
Ms. Eve Bell  
Mr. David Bell  
Mr. & Mrs. Jay Bengé  
Mr. Rafael Betances &  
Dr. Maria Donato  
Dr. & Mrs. Michael J. Biavati  
Dr. Sean Black &  
Dr. Jennifer Edwards  
Mr. William Blankenship  
Mr. & Mrs. Robert Brown  
Ms. Catherine Bruff  
Ms. Pamela Busbee  
Ms. Linda Caldwell  
Dr. & Mrs. Joseph Clifford  
Mr. & Mrs. Daniel Colonna  
Mr. & Mrs. Brian Colwill  
Mr. & Mrs. Charles &  
Jeannine Cook  
Mr. & Mrs. Bill & Jane Corbellini  
Mrs. Hannah Cutshall  
Mr. & Mrs. Michael Dardick

Mr. & Mrs. Chris & Licia Dawe  
Mr. & Mrs. Stewart &  
Averille Dawson  
Mr. & Mrs. Hugues delaVergne  
Mr. & Mrs. Kelly DeLay  
Mr. & Mrs. Brian & Anne Dethrow  
Mr. Andrew Doughtie  
Mr. & Mrs. Joe Dwyer  
Mr. & Mrs. Mark Ehrenreich  
Mr. & Mrs. Wade Erickson  
Mr. & Mrs. Bill & Heather Esping  
Mr. Richard S. Frankl  
Ms. Shelley Frankl  
Ms. Janet Gadol  
Ms. Kara Gehan  
Dr. Fred Ghali &  
Dr. Tessa Anderson  
Ms. Amanda Gildersleeve  
Mr. & Mrs. Brett & Jill Giroir  
Mr. & Mrs. Karl Guttag  
Dr. Ethan Halm &  
Ms. Diana Sheehan  
Mr. & Mrs. James L. Halperin  
Ms. Debbie Herskovitz  
Mr. & Mrs. Pamela & Jay Hilbert  
Mr. & Mrs. James Hildenbrand  
Mr. & Mrs. Frank Houseman  
Dr. Jodie Hurwitz  
Mr. & Mrs. Benjamin E. Jared  
Mr. & Mrs. Donald &  
Susan Jarzemyk  
Mr. & Mrs. Randy G. Johnson  
Mr. & Mrs. Charles Josephs, Jr.

Mrs. Susan Kuddes  
Mr. & Mrs. Blake Kresl  
Mr. & Mrs. Jeffrey A. Leuschel  
Mr. & Mrs. Peter Lorenzen  
Courtney & John Madden  
Mr. & Mrs. Ira Matsil  
Mr. & Mrs. Becky &  
Bob McCamey  
Mrs. Sabrina McCulloch  
Mr. & Mrs. Steven Meyer  
Ms. Erin Paisan  
Mr. & Mrs. Tim & Heidi Perry  
Mr. & Mrs. Raymond Pittet  
Mr. & Mrs. John Raleigh  
Mr. & Mrs. William Rapier  
Mr. & Mrs. Douglas Rekerdres  
Mr. & Mrs. Mark Robbins  
Mr. & Mrs. Lee Roeber  
Dr. James Brodsky &  
Dr. Cynthia Schneider  
Mr. & Mrs. Cathy & Kevin Shade  
Mr. & Mrs. Kimberley &  
Scott Sheffield  
Mr. Cary Slobin &  
Mrs. Lauren Kaplan  
Mr. & Mrs. Brien & Anne Smith  
Mr. & Mrs. Ryan Smith  
Mr. & Mrs. Sean Sneathern  
Mr. & Mrs. David Snyder  
Mr. & Mrs. Lawrence &  
Karla Steinberg  
Mr. & Mrs. Stewart Thomas



Let's go, Chargers!

Mr. & Mrs. Todd &  
Xan Thompson  
Mr. & Mrs. Jeffrey & Fran Toubin  
Mrs. Janet Trompert  
Mr. & Mrs. Michael Uhrick  
Mr. & Mrs. Spencer &  
Cindy Van Ness  
Mr. & Mrs. Dee & Trey Velvin  
Mr. Curtis Wales  
Mr. Pingying Wang &  
Mrs. Maximilian Antich  
Ms. Kristy Waters  
Ms. Kaylyn Wilson  
Mr. Richard Wojciechowski

# CORPORATE | MATCHING GIFTS 2019-2020

AT&T  
Ben E. Keith Foundation  
Benevity  
Blackbaud  
BNSF Railway Foundation  
Boxtops For Education  
Brodsky Foundation  
Capital Distributing  
Capital One  
Communities Foundation of Texas  
Fidelity Charitable Gift Fund  
Castle Hills School Foundation  
Cherry Pie Designs  
C-III Asset Management LLC  
Dallas Foundation  
Dallas Jewish Community Foundation  
Ebby Halliday Advantage Program  
Fran & David Eisenberg Philanthropic Fund  
of the Dallas Jewish Community Foundation  
Elvebak Orthodontics  
Fannie Mae Match Program  
Frost Bank  
Goldman Sachs  
Great American Opportunities

Hoak Foundation  
James Baker Group, INC  
JP Morgan Chase  
The Kirschner-Bookatz Family Foundation, a  
Supporting Foundation of the Dallas Jewish  
Community Foundation  
Kroger  
Mckamy Hayes Group  
Mills Uniform Company  
Moody Foundation  
Network For Good  
Park Place Lexus of Plano  
Paulos Foundation  
Paypal Giving Fund  
PepsiCo  
Sage Dining  
Carol W. & Max M. Sandfield Philanthropic Fund  
of the Dallas Jewish Community Foundation  
Shared Studios  
Smith, Stern, Friedman, & Nelms, P.C.  
Steinhart Family Advised Fund  
Texas Instruments Foundation  
Wendy Krispin Caterer, Inc.  
Rene & Jimmy Wisch Charitable Fund of the  
Dallas Jewish Community Foundation



# ANNUAL FUND | TRIBUTE GIFTS 2019-2020

## In Honor Of:

Ryan Abernathy  
 Alex & Luca Anderson  
 Athens Aschaffenburg  
 Lily Attmore  
 Luke Baird  
 Meghan Ball  
 William Balthrope  
 Judi Bauerlein  
 Chris Bedenbaugh  
 Michael & Michelle Beheshti  
 Jack Bendalin  
 Laura Berend  
 John Biavati  
 Brennen Bliss  
 Patti Bongiorno  
 Maxwell Boul  
 Parker Brigham  
 Andrew & Kyle Brown  
 Nicholas & Ross Campise  
 Jonathan Capriotti  
 Avery Casey  
 Etan Cohn  
 Ethan Conklin  
 Lauren Coon  
 Hudson Cooper  
 Mary Covington  
 Amelia Curtis  
 Tessa Davidsohn  
 Carlos Davis  
 Landon Davis  
 Oliver Adams Davis  
 JenJen Dayton  
 Madeline Deasy  
 Benjamin Delagi  
 Hugues delaVergne  
 Chris Del Core  
 Stanhope Denegre  
 Kirk Deppe  
 Andrew DeTullio  
 Nancy Diebolt  
 Am&a Dockweiler  
 Timothy Dodd  
 LuAnn Dolly  
 Mimi Drew  
 Colin Drummond  
 Danyle Duke  
 Mackenzie Dupre  
 Oscar Eakett  
 Jacob Eckart  
 Tian Ehrenreich  
 John (Whit) Whitlow  
 Emanuelson  
 Isaac Emmett  
 Zoe Evangelist  
 Caden Evans  
 David Falk  
 Darcy & Ellie Fisher  
 Lucas Floreano  
 Mack Frary  
 Shae Galardi  
 Ryan Gilger & Grace Gilger

Betty Glasheen  
 Gray Goldman  
 Cordelia A. Gonsalves  
 Hayden Goodiel  
 Ellie Goodwin  
 Jack Henry Grace  
 Marina Guandolo  
 Rees Gunnerson  
 Matthew Halbeisen  
 Mary Keene Hanson  
 Hannah Harmon  
 Caroline Harris  
 Brooks Hart  
 Wyatt Haspel  
 Samantha Hawkins  
 Riley Hayes  
 Walter Hencken  
 Korbin Hines  
 Will Holmes  
 Patrick Horstman  
 Ella Houstoun  
 Jean Huddleston - Upper  
 Elementary  
 Beau Irish  
 Harrison Jackson  
 Brooke Kahn  
 Emmy Kaighan & Matthew  
 Kaighan  
 Marsha Kaspareit  
 Ryan Kassanoff  
 Seth Kassanoff  
 Rob Kelton  
 Braden Krumholz  
 Aidan & Brady Kuntz  
 Kate & Lauren Ladd  
 Celeste Leuschel  
 Julee Lewin  
 Reese Littrell  
 Drew Macrini & Ethan Macrini  
 Charlie Magids  
 Ella Louise Margiotta  
 Benton Markey's Birthday  
 David F. Martineau  
 Meredith Mathews  
 Chris & Jeanne Matthews  
 Matthew Mattison  
 Owen & Arden McCabe  
 Marshall McCamey  
 Jenna McDermott  
 Sharon McEachern  
 Joan McGraw  
 Hunter Michaelis  
 Grant Miller  
 Charles Mitts  
 Ryan Monk  
 Ainsley Mullins  
 Cam Myers  
 Ford Myers  
 Janessa Myers  
 Liam Davis Neuhoff  
 Kiley Nixon  
 Kimmie Nixon, Class of 2010

Jack O'Donnell  
 Andrew & Taylor Ogden  
 Luke Ott  
 Bond Palamar  
 Anne Pierce  
 John Austin Powers  
 Jordan Powers  
 Matthew Preheim  
 Ethan Proctor  
 Max Ralston  
 Nicholas Raymond  
 Luc G. Reichenstein  
 Cooper Rhodes  
 Reilly Rickert  
 Dante Rivera  
 Leira Rivera  
 Nico Rivera  
 Roman Rivera  
 Cliff Samuelson  
 Letah Samuelson  
 Crew Seedig  
 Josh Segert  
 Logan Shaffner  
 Madison Shankle  
 Jared Shaw  
 Shelton 5th Grade Faculty  
 Shelton Middle School Faculty  
 Georgia Sigalos  
 Edward Slaven  
 Kate Slaven  
 Liam Snadon  
 Dylan Sneathern & Skylar  
 Sneathern  
 Sarah B. Solomons  
 Jeff & Kristi Stokes & Dyslexia  
 Training  
 Matthew Strickland  
 Zachary & Nathan Taylor  
 Josie Terstriep  
 Schaefer Terstriep  
 Luke Thompson  
 Trenton Thompson  
 Maggie Tipton  
 Chandler Tolbert  
 Marki Tomasides  
 Meredith Touchstone  
 Grayson Tracy  
 Zach True  
 Avery Viracola  
 Nathan Vitek  
 Enzo W&erley  
 Ellie Weinberg  
 Noah Wertz  
 Garrett White  
 Annie Wiggins  
 Ben Wiggins  
 Jordan Williams  
 Katherine Isabella Williams  
 Jack Wilson  
 Lizzie Wolf  
 Grant Young  
 Gwen Ziegler

## In Memory Of:

Jane Cary  
 Barton R. Chambers  
 Uncle Joe Coen  
 Harvey Conklin  
 Mrs. John S. Cook  
 Scott F. Cooley  
 Jackie Coulter  
 Wanna Cox  
 Danny Cummiskey  
 Kierstin Eaddy  
 Joe Eckert  
 Linda Edwards  
 Gerry Farnsworth  
 Sydney Galway  
 Cathy Gilmore  
 Mary Givens  
 Aaron Gordon  
 Callan Harrison Vanlandingham  
 Jay Don Hays  
 Jean Hecht  
 Jeffrey Heller  
 Mark Howe  
 Kelton William Jared  
 Larry Jinks  
 Elizabeth Lynn Jones  
 Andy Knippner  
 Justin Lane  
 Lollie & Pop  
 Meredith Lyon  
 Shawn Martin  
 Vella Jo Martin  
 Mary McNeil  
 Neil Millman  
 Laura Monroe  
 Carolyn Nesbitt  
 Alex Paccone  
 Jonathan Pace  
 Florence Page  
 Jane Parnell  
 Joseph Pearce  
 Judge Henry Pena  
 Linda Heidi Primo  
 Brian Price  
 Charles Queen  
 Emma Lou Quinius  
 Lolly Reese  
 Mary Elizabeth Reppeto  
 Elizabeth Rogers  
 Ellen F. Rossini  
 Evelyn Schaerdel  
 June Shelton  
 Ben Stephens  
 Frank J. Sturzl  
 Scott Holland Taylor  
 Mary Tomasides  
 Cornelius Van Den Handel Jr.  
 William Ward  
 Haydon White  
 Joseph Paul Wolf

# DESIGNATED GIFTS 2020

Edward & Wilhelmina  
Ackerman Foundation  
Allie Beth Allman & Associates  
Mr. Joe Altadonna  
Mr. & Mrs. Theodore Alter  
Ms. Mary Anderson  
Anonymous  
Mr. & Mrs. Anthony Apollaro  
Mr. & Mrs. Mark Ashby  
Ms. Susan Baldwin  
Mr. & Mrs. William L. Ball  
Mrs. Jean Ann Brock  
Nexera Performance  
Mr. Chad Baird, C-III Capital  
Partners  
Family of William Balthrope  
Ms. Sloan Barber  
Mr. Michael (Tucker) Barber  
Ms. Brenda B. Barbutti  
Mr. Chad Barrett  
Mr. Roger Beck  
Lynn & Win Bell  
Miss Shannon K. Bell  
Mr. & Mrs. Bert Blair  
Mr. & Mrs. Edward Blessing  
Mr. Sam Bloom  
Mr. Oliver Bloom  
Mr. Tim Bond  
Ms. Cindy K. Boss  
Angela & Brad Bowman  
Ms. Kathy P. Boyett  
Ms. Del Boyette  
The Brackbill Family  
Brancheau Consulting Services  
B.J. & Elisha Brandenberger  
Mr. Clay Brandenburg  
Melissa & Stephen Brooks  
Ms. Ann Brookshire  
Rita & Crozier Brown  
Patti & Glen Brown  
Jane & Bill Browning Family  
Fund  
Cathy Bruff  
Ms. Linda Bullard  
Mr. & Mrs. William H. Bulmer  
Mr. & Mrs. D. Harold Byrd, III  
Mrs. Robin Calcagno  
Mr. & Mrs. Robert Caldwell  
The Cantrell Family  
Katherine C. Carmody  
Charitable Trust  
Ms. Katherine W. Caroland  
Mr. John Carter  
Mr. & Mrs. Peter D. Carter  
Mr. & Mrs. Robert Carter  
Mrs. Sydney Carter  
Mr. Ted Casey &  
Mrs. Angela Wommack  
Ms. Leslie Cashdollar  
Ms. Eunice Ann Christman  
Barbi & Scott Cohen  
Mr. Christopher Coker  
Ms. Alexis Collard

Mr. & Mrs. Peter G. Collins  
The Conlon Family  
The Constantin Foundation  
Ms. Tara Conway  
Mr. & Mrs. Harold D. Cook  
Mr. Hudson Cooper  
Ms. Michelle Coppolino  
The Corrigan-Goddard  
Foundation  
Jennifer & Tony Cox  
Hope & Gene F. Cramm, Jr.  
Mr. & Mrs. Curtis Crozier  
The Crozier Family Foundation  
The Dannis Family  
The Dardick Family  
Mr. & Mrs. Stephen &  
Kathleen Davis  
Mr. Hank Davis  
Mr. & Mrs. J. Stewart Dawson  
Beth & Greg Delagi  
Mrs. Tammy DeWolf  
Dex Imaging  
Mr. & Mrs. Doug Diebolt  
Ms. Nancy J. Diebolt  
Mr. & Mrs. Tyke &  
Connie Dipprey  
Jennifer & Richard Dix  
Ms. Joan Dodd  
Dr. & Mrs. Christopher Dreiling  
Ms. Mimi Drew  
Mr. Tommy Drew  
Ms. Helen F. Dunn  
Ms. Talley Dunn  
Mr. & Mrs. Miles Eggart  
Mr. & Mrs. Mark D. Eichorn  
Fran & David Eisenberg  
Philanthropic Fund of the  
Dallas Jewish Community  
Foundation  
Mrs. Lindsey Ellington  
Mr. & Mrs. Terry & Zeldia Ellison  
Dr. & Mrs. Roger Emerson  
Mr. & Mrs. Jim English  
Esping Family Foundation  
The Evans Family  
Evergreen Alliance Golf LTD  
Mr. & Mrs. Barb & David Farmer  
Mr. Tom Farris  
Fee, Smith, Sharp & Vitullo  
The Fenerty Family  
Mr. Bradley Feters  
Mrs. Stan Finney  
Flexjet LLC  
The Florence Foundation  
FNTS Holdings LLC  
Ms. Jennifer Frank  
Mr. & Mrs. Mark &  
Jennifer Gampper  
Mr. Brady Gampper  
Mr. & Mrs. Tom Gay  
Kara & Peter Gehan  
Sally & Christopher Geymuller  
Mr. Gary O. Giles

Mrs. Sally Glennan &  
Mrs. Alison Davidson Slaton  
Mr. William Gore  
Jennifer & Thomas Greenlee  
Suan & Evan Griffiths  
Mr. Levi Gwin  
Mr. & Mrs. Clifford A. Hahne  
Fanchon & Howard Hallam  
Mr. & Mrs. TC Hamilton  
Mr. & Mrs. Tim Harrigan  
Mr. Rider Harrington  
Mr. John Hawkins  
Heffernan Family  
Devra & David Helffrich, Jr.  
Jeff & Carol Heller  
Henry Foundation  
The Hensarling Family  
Mr. & Mrs. J. Patrick Heptig  
Teri & Michael Hershman  
Mr. Joe Hickman  
Ms. Melanie Hill Anderson  
The Hillcrest Foundation  
Rogers Hipp Family  
Nancy & James Hoak  
The Hoblitzelle Foundation  
Mr. & Mrs. Forrest Hogle  
The Hogle Foundation  
The Hollman Family  
Mrs. Anné Hughes  
Paula & Kenneth J. Hughes  
Nancy Ann & Ray Hunt  
Ms. Heather Hunt Graham  
Ms. Laura Hurt  
Mr. Henry Hurt  
Huselson, Morgan &  
Maultsby, P.C.  
Mr. & Mrs. Jabez Jackson  
Mrs. Joan Sandfield Jackson  
Mr. Jimmy Jackson  
Ms. Marian James &  
Mr. Richard Peel  
Mrs. Amy Jared  
Mr. Matt Jared  
Mr. John Jared  
Mr. Eugene Jared  
Mrs. Patricia Jared  
Suki & Paul Jarzemsky  
Ms. Harriet H. Jeffers  
Ms. Gwen Jensen  
Ms. Yaasmiyn Jensen  
Mr. & Mrs. Randy &  
Marc Johnson  
Ms. Sally Johnson  
Ms. Vicki Johnson  
Mr. & Mrs. Charles Jones  
Ben E. Keith Company  
Mr. & Mrs. Bill Kennedy  
Michele Valdez &  
Gary Kennedy  
Ms. Santina Kornajcik  
Mr. Caden Krehbiel  
Mr. Robert Lamoreaux  
Ms. Danine Lawrence

Lee Lewis Construction  
Mr. Laker Lee  
Ms. Sara Lefever  
Ms. Veronica S. Lewis  
Shelly & Chris Lloyd  
Ken, Nancy & Andrew Luce  
The J.E. & L.E. Mabee  
Foundation  
Mr. & Mrs. John Madden  
Judy & Benton Markey Family  
Mr. Charles D. Marlett  
Mr. & Mrs. Donald M. Marshall  
David F. & Sara Martineau  
Liz & Ira Matsil  
The McCamey Family  
Ms. Peggy McCowie &  
Ms. Judy Albro  
Mr. Christian McMahon  
The Meadows Foundation  
Mr. and Mrs. Mark D. Miller  
Rebekah & Marshall Mills  
Ms. Basia Mitchell  
The Mitchell Family  
Mr. Carter Monroe  
Mr. & Mrs. John G. Monroe  
The Moody Foundation  
Mr. Alan Moore  
Ms. Kennedy Moore  
Ms. Kelly Morgan  
Mrs. Stephanie Mueller  
Paul & Vivienne Neubach  
Mr. John Newby &  
Mrs. Maria "Kiki" Karos  
Ms. Madison Niederhauser  
Mr. & Mrs. Harold Nix  
Ms. Tracy Nix  
Ms. Barbara Novotny  
Mr. Conner Novotny  
Ann & Michael Ochstein  
Mr. Noah O'Connor  
Ms. Deborah Olufolaju  
David & Patti Pace  
Jonathan Pace Foundation  
Mr. Steven Pangborn  
Mr. Holt Parker  
The Paulos Foundation  
Ms. Carolyn Pearson  
Drs. Bob & Joyce Pickering  
Mr. & Mrs. Robert G. Pickering  
Mr. & Mrs. Charles C. Pierce, Jr.  
Mr. Westin Pitlik  
Mr. Amos Poole  
Kathleen & William Power  
Thomas & Darcy Preheim  
Mr. Howard E. Rachofsky  
Mr. Michael Rader  
Mr. Max Ralston  
Mr. Ralph Randall  
Robbie & John A. Raphael  
Philanthropic Fund  
The William & Melanie Rapier  
Family  
Mr. & Mrs. Mark Redd



Mr. James (Boots) Reeder  
 Mr. Charles Reeg  
 Mr. James Reese  
 Ms. Karen Reynolds  
 Rhino Operating Co.  
 Mr. & Mrs. Marco &  
 Michelle Rivera  
 Mr. & Mrs. Douglas &  
 Lisa Robison  
 Ms. Kristy Robinson  
 Mr. & Mrs. Robert L. Robinson, IV  
 Ms. Tori Robinson  
 Mr. Zac Robison  
 Mr. & Mrs. Rick Rogers  
 Mr. & Mrs. Carl S. Rubin  
 Janice & Will Ryan  
 Rachel Rucker-Schmidt &  
 Jason Schmidt  
 Mr. & Mrs. Richard P. Schweitzer  
 Ms. Patricia Seevers  
 Ms. Melinda Foster Sellers  
 Dr. Larry G. Shadid  
 Mr. Daniel Shaeffer  
 Ms. Sally Shaw  
 Mr. & Mrs. Peter A. Sherman

Mr. & Mrs. Dean Sides  
 Ms. Peta Silansky  
 Harold Simmons Foundation  
 Mr. & Mrs. R. Daniel Slaven  
 Pat & Ray Smerge  
 Smerge Family Foundation  
 Ms. Beth Smith  
 Anne Q. & Brien P. Smith  
 Ms. Pat Smith  
 Mr. John D. Solana  
 Mr. Sam Sorensen  
 Mr. Robert F. Spies  
 The Stallings Family  
 Tina & Dan Stansbury  
 The Steinhart Family  
 Mr. & Mrs. Gary Stell  
 Ms. Claudia Stevens  
 Mr. Matthew Strickland  
 Mr. Keith Strouble  
 Mr. Drew Stuckey  
 Roy & Christine Sturgis  
 Charitable Foundation  
 Ms. Eve Sullivan  
 Bharat & Anila Sundaram

Ms. Dianne &  
 Miss Hardin Sztamenits  
 Mr. & Mrs. Beau &  
 Stephanie Taylor  
 Mr. Edwin Teeter  
 The Richard & Mary Templeton  
 Foundation  
 Texas Instruments Foundation  
 Texas Rangers Baseball  
 Foundation  
 Mrs. Anne Hendrick-Thomas  
 Mr. Josh Tolleson  
 Mr. Michael Tow  
 Mr. & Mrs. E. Todd Tracy  
 Ms. Susan W. Truitt  
 Mike & Jeanie Uhrick  
 Kelli & Don Valade  
 Mr. Gary L. Van Winkle  
 Dee & Trey Velvin  
 Holly & Lenny Vitullo  
 Ms. Callie Wakefield  
 Williard & Pat Walker  
 Charitable Foundation  
 Ward Family Foundation  
 Mrs. Cindy Ward (Bill\*)

Mr. Russell Warren  
 Mr. Gary L. Webb  
 Rabbi Stefan J. Weinberg  
 Mr. & Mrs. Tully Weiss  
 Terri & Mike West  
 Ms. Paula Whisenant  
 Jennifer & Cory Whitaker  
 Peter & Madeleine White  
 Donell & Phillip Wiggins  
 Ms. Denise Williams  
 Keith & Stacey Williams  
 Bobbie Sparks Williams &  
 J.R. Williams, II, MD  
 J. L. Williams Foundation  
 Ms. Jonell H. Williams  
 Mrs. Renee Williams  
 Mr. & Mrs. John S. Wilson  
 Mr. & Mrs. A. H. Witte, Jr.  
 Wood-Wilson Company  
 Mr. Greg Zemanek  
 Celeste & Kurt Zuch

\* Deceased

## IN-KIND GIFTS 2020

ABCO, Inc.  
 Anonymous  
 Mr. and Mrs. Bert Blair  
 Frost Bank  
 Betty Glasheen

Ms. Melissa Harrison  
 Mr. Harry Harrison, Mint Dentistry  
 Dr. Charles Matthews  
 Shelton Annual Fund Ambassadors  
 Shelton Parents' Association

Mrs. Carla Ratcliff  
 Ms. April Snider, Susan Saffron Jewelry Boutique  
 Ms. Amanda Smart  
 Texas Republic Bank

## NORTH TEXAS GIVING DAY 2019-2020



Anonymous  
 Drs. Kimberly Aaron &  
 Steven White  
 Abbott Family  
 Brigitte & Greg Adair  
 Paul & Mary Aidala  
 Connie & Enis Akgerman  
 Stephanie Al Otaiba  
 Androvett Family  
 Tony & Penny Apollaro  
 The Armour Family  
 Shae Armstrong  
 Philip & Amanda Armstrong

Honey Austin  
 Gulzar & Jalal Babool  
 Raymond & Lynne Baehr  
 Ken & Susan Baker  
 Kelly Barker  
 Michael & Michelle Beheshti  
 Brittany Benge  
 Earle J. Bensing  
 The Bergus Family  
 Dottie Bernstein Family  
 Michael & Amy Biavati  
 Bielecki Family  
 Nick Biewenga  
 Sarah & Sam Bloom  
 Johnny & Betsy Bond  
 Anjanette Boul  
 Virginia Bowers  
 The Boyle Family  
 Linda & Chad Bradford  
 The Bransky Family  
 James & Lisa Buchanan  
 Lisa & William Byrnes  
 Jonathan & Angela Carrier  
 Angela Wommack & Ted Casey

Steven & Emily Chapman  
 William Christensen  
 James Clark  
 The Cleary Family  
 Jennifer & Joe Clifford  
 Zachary Cole  
 The Collier - Keesy Family  
 Brian & Becky Colwill  
 Mary Connolly  
 Bill & Robbie Cook  
 Arthur & Kim Cooper  
 Mark & Kelly Cooper  
 Michelle Coppolino  
 Michael Curvey  
 Chris Cuzalina  
 The Dannis Family  
 Michael & Jill Dardick  
 Christina deLeon & Iain Day  
 Jim & Leigh Dayton  
 Andrew De Tullio  
 Tom, Julie & Chris Del Core  
 The Deschenes Family  
 The Dios Family  
 The Dodson Family

Mark Doom  
 The Dougherty Family  
 Kristi Dow  
 Claire Duesing  
 Jenny Duncan  
 Jacqui Dunworth  
 Michelle & Chris Dupre  
 Shannon & Philip Durst  
 Eaddy Family  
 Ricki & Randy Ebner  
 Edmisten Family  
 Mark & Annie Ehrenreich  
 Bryan & Kristin Elvebak  
 Michelle Fallon  
 Susan & Matthew Feldman  
 Forbus Family  
 Christy Fowler  
 Frady Family  
 Jennifer Frank-Paramo  
 Richard Frankl  
 Shelley Frankl  
 Ryan & Kate Fulton  
 Russ & Sandy Fusco  
 Janet S. Gadol

# NORTH TEXAS GIVING DAY 2019-2020 CONTINUED



Andrew Gellman  
Genovese Family  
Laura & Eli Gershenson  
Brian Geyer  
Tessa & Fred Ghali  
Ross & Courtney York Gilger  
Myra & Larry Gingold  
Bridget & Mike Goldman  
Israel & Liz Gonzalez  
Laura Bloom Gordon  
Kal Grant  
Greg & Cathy Groff  
Kari & Todd Grzych  
Amanda Gunn  
Laurie Guthrie  
Mr. & Mrs. Karl Guttag  
Lynette Hagaman  
Kelly Hall  
Tricia Harden  
Kimber & Michael Hartmann  
Tricia Heaney & Mark Ralston  
Debbie & Jonathan Herskovitz  
Lena Hilbert  
Jim & Angie Hildenbrand  
Suzette Switzer Hinds  
Stephen Hipp & Brian Rogers  
John Hodges  
Hoffer Family  
Drs. Carroll & Linda Hughes  
Ginger & David Jackson  
Mark & Irene Jacobs  
Renee & Scott Jansen  
Mr. & Mrs. Ben Jared  
Elaine & John Johnson  
Randy & Marci Johnson  
Steve & Christi Johnson  
Brittany Jones  
Charles & Kirsten Josephs  
Joseph & Maryanne Jouvenal  
Dawn & Dan Kahle  
Lauren Kaplan & Cary Slobin

Leon J. Kaplan  
Dr. Beth Kassanoff & Mick Piper  
Barbara Katz  
Ray & Trudy Kembel  
Susan Kinser  
Leigh & Ben Koch  
Mrs. Patricia Koester  
Lisa & Blake Kresl  
Wendy Krispin & Family  
Peggy Krug  
Terry & Jeff Kurz  
Francisco Ledesma &  
Elizabeth Lopez  
The Lemery Family  
Jeff & Jani Leuschel  
Zachary & Ricky Levy &  
Heidi Weinstein- Levy  
Lee Drummond Lorenzen &  
Peter Lorenzen  
Jeff & Jeanette Lurie  
Joe & Charma Malanoski  
Brian K. Mantzey  
James & Chrissy Mantzuranis  
Colleen & Jason Marchetti  
Mark & Erin Marshall  
James & Gayla Mathis  
Liz & Ira Matsil  
Alyssa Maxson  
Robin McBride  
Michael & Carmen McCabe  
Nancy McCann  
Shoshana & Mark McCrary  
Beth & Kevin McDermott  
Susan McKinney & Will Dorward  
The McSorley Family  
Paula & Douglas Menendez  
Metrailler Family  
Scott & Fay Michaelis  
Blair & Greg Miller  
Don & Donna Miller  
Doyletta Minix & Rocky Padilla

Lanier & Ken Monk  
Eddie Moreno  
The Monty Mueller Family  
Frasher & Adrienne Murphy  
Gordon & Beverly Nedwed  
Johanna Nelson  
Jenny Neuhooff  
Bill & Trisha Neuhooff  
Giovanni & Gretchen Nieto  
Dale B. & Karen A. Nixon  
Mike & Jill Nowell  
Jenn & Chris Ogden  
The O'Neill Family  
Jennifer & Frederic Ortiz  
Mark & Kayla Owens  
Stacey & Diane Padgett  
Erin Paisan  
Dana & Scotty Palmer  
Darees Patrick  
Dyana Payne  
Robert Pechar  
Arwen Pena  
Kacy & Alan Pierce  
S. H. & Linsey Pogir  
Jeff & Kara Prescott  
David & Shaina Primeaux  
Clark & Adrienne Pulliam  
Margaret A. Purser  
Alba G. Quinones  
John & Stephanie Raleigh  
Bill & Melanie Rapier  
Glynn H. Rasor  
The Redstone Family  
The Rice Family  
Auna Hay Riggs  
Thomas Ritz & Alicia Meuret  
Charlie Robbins  
Kristal Roberts  
Janie Robertson  
Raeann Robertson  
Mr. & Mrs. Lee Roever  
Brock Rogers  
The Ross-Mitchell Family  
Rachel Rucker-Schmidt &  
Jason Schmidt  
Dr. & Mrs. William H. Ryan  
Brian & Emily Sarche  
Suzanne Sauder  
Marina Sbrochi  
Miles Schendle  
Alysa & Andrew Schildcrout  
Robyn Schimmels  
Nicole & Bo Sears  
Stacey Segal & Debbie Jenkins  
Robin & Bob Sells  
Steve & Lara Shankle  
Shannon Sharp  
Diana Sheehan & Ethan Halm  
Betty Sue Sheinberg  
Joel & Erin Sherman  
Cash & Andi Shurley

Rodney & Kimberly Singleton  
Ryan & Carrie Smith  
David Smith  
Richard & Renee Smith  
Shannon & Tanya Smitherman  
Sean & Carri Sneathern  
Dave & Debbie Snyder  
Gage Spain  
Steven Spencer  
Ryan & Brandy Stafford  
Randi Steinhart  
Gary & Suzanne Stell  
Dan & A. K. Stewart  
David & Michelle Strawman  
Ann Stroth  
Luke & Jenny Stutler  
Shelley Swan  
Jonathan & Sarah Swartz  
Lynn & Jeff Swearingen  
Nicola Tamburrino  
Zachary & Nathan Taylor  
Deborah Tilger  
Christine & Harry Tomasides  
Ben & Jenn Tompkins  
Torres Family  
Son & Chin Chin Tran  
Amanda & Rene Trevino  
Scott & Tatum Tuthill  
Lisa Tyler  
Anna & Joe VanderPluym  
Andrea & Mark Vitek  
Curtis Wales  
Catherine Walhood  
Aida Walter-Reid & William Reid  
Daniel & LaDana Washburn  
Kaitlyn Waters  
Ashley Hollweg Watson  
Watson Family  
Gary L .Webb  
Brooke Weidenbaker  
The Weidenbakers  
Ellie Weinberg  
Drs. Rick & Eleise Weisberg  
Cory Whitaker  
Mark & Jen White  
The Wierzbicki Family  
Bradley Willson  
Kaylyn Wilson  
Tracy Wilson  
Beth Womble  
Brandon & Heather Wood  
Travis & Andrea Wood  
Dawn Woodruff  
Grace Anne & Ray Woodruff  
Cloyse & Kerri Woolley  
Yost Family  
Melanie Young  
Mr. & Mrs. Joe Zasa



# NORTH TEXAS GIVING DAY 2020-2021

Anonymous  
Maggie Adams  
Enis & Connie Akgerman  
Mike & Crystal Androvett  
The Angel Family Foundation  
The Armour Family  
Gulzar & Jalal Babool  
Ken & Susan Baker  
Mary Bashara  
Michael & Michelle Beheshti  
Earle J. Bensing  
Dottie Bernstein & Family  
The Bertino Family  
Brenda & Ron Bliss  
Sarah & Sam Bloom  
Locie Boggs  
Johnny & Betsy Bond  
Anjanette Boul  
Virginia J. Bowers  
Linda Bradford  
Adrienne Bransky  
James & Lisa Buchanan  
Marc & Stephanie Cabrera  
Laura B. Calley  
Ceitlin Family  
Jim Clark & Lynne Collier  
Jennifer & Joe Clifford  
Nancy Coffman  
Mary E. Connolly  
William Cook  
Arthur & Kimberley Cooper  
Mark Cooper  
Spark & Elizabeth Corwin  
Michael & Kim Curvey  
Chris Cuzalina  
Charles Dannis  
Elizabeth Darden  
Macey & Steve Davis  
Julie Del Core  
Brian & Anne Dethrow  
Dahl Dickey  
Mr. & Mrs. Aaron Dios  
Adam & Jenny Dougherty  
Claire Duesing  
Jenny Duncan  
Jacqui Dunworth  
Michelle & Chris Dupre  
Philip & Shannon Durst  
Randall Ebner  
Mark & Anne Ehrenreich  
Bryan & Kristin Elvebak  
Stephen & Michelle Falk  
The Feldmans  
Hersh Foundation  
Christy Fowler  
Jennifer Frank  
Richard Frankl  
Shelley Frankl  
David & Jame Frey  
Janet & Adam Gadol  
Betsy & Jesse Garza  
Laura Gershenson  
Brian Geyer  
The Geymullers

Tessa & Fred Ghali  
Courtney York & Ross Gilger  
Cathy Gilmore & Betty Glasheen  
Bridget & Mike Goldman  
Liz & Israel Gonzalez  
George & Kathleen Goodno  
Laura Bloom Gordon  
Cathy & Greg Groff  
Jeff & Lonnie Grover  
The Grzych Family  
Karen Gutttag  
Susan Gwin Burks  
Lynette Hagaman  
Matthew Halbeisen  
Kelly Hall  
Patricia Harden  
Tyson Harmon  
Kimber & Michael Hartmann  
Haystack Burgers & Barley  
Tricia Heaney & Mark Ralston  
Bill & Cheryl Henry  
Debbie & Jonathan Herskovitz  
Lena Hilbert  
Jim & Angie Hildenbrand  
Suzette Hinds  
Stephen Hipp & Brian Rogers  
John Hodges  
John & Carol Holden  
Holliday Family  
Garnett Holmes  
Savannah Hostin  
Laura Custard Hurt  
Vanette Hutcheson  
Ginger & David Jackson  
Jake Johnson  
Randy & Marci Johnson  
Karon & Barry Jones  
Scott & Lori Jones  
Darla Beam Jordan  
Joseph & Maryanne Jouvenal  
Katie & David Junod  
Kim & Alex Kamen  
Lauren Kaplan  
Leon J. Kaplan  
Robert S. Kaplan  
Elizabeth Kassanoff  
The Keesy-Collier Family  
Kevin & Anne King  
Daniella & Wayne Kling  
Lisa & Blake Kresl  
Jan & Bella Kruger  
Ashley Lamb  
Ashley & Sam Leake  
Preston LeBlanc  
Ledesma Family  
Shanon & Rebecca Leonard  
Jeff & Jani Leuschel  
Chuck Locke  
Peter & Lee Lorenzen  
Jeffery Lurie  
Shelley & David Lurie  
Linda Manning  
Randall Marchant  
David & Sara Martineau

Gayla Mathis  
Liz & Ira Matsil  
Don McCann  
McCrary Family  
Shoshana & Mark McCrary  
The McDermott Family  
McSorley Family  
The Meier Family  
Paula Menendez  
William Mercer  
Metrailler Family  
Scott & Fay Michaelis  
Grant Miller & Family  
Doyletta Minix  
Lanier & Ken Monk  
Terry Moody  
Carrie Moore  
Eddie Moreno  
Tripp Moss & Family  
Frasher & Adrienne Murphy  
Lisa & Jerry Nagid  
Charles & Jodi Norton  
Jill Nowell  
Jennifer & Chris Ogden  
Bradly Oliver  
The O'Neill Family  
Chase & Katita Palamar  
Dana & Scotty Palmer  
Mr. & Mrs. Mark Patrick  
Mary Jean Pearle  
The Pechar Family  
Gina Rangel Pena  
Mrs. Bob & Joyce Pickering  
Kacy & Alan Pierce  
Linsey & S. H. Pogir  
Anastasia Popova  
David, Shaina & Tyler Primeaux  
Clark & Adrienne Pulliam  
Margaret A. Purser  
Alba G. Quinones  
Glynn Rasor  
James Boots Reeder  
Van & Laurie Roberts  
Janie Robertson  
Zac Robison Family  
Shelly Rogers  
Rachel Rucker-Schmidt  
Stacey Segal & Debbie Jenkins  
Bob & Robin Sells, R.A.Sells  
Partners  
Sapna Shah  
Sharon Sharp  
Karen Shaw  
Steve & Jane Simmons  
Tyler Simmons  
Rodney & Kimberly Singleton  
Skaggs Family  
Kimberly Sloan  
Richard & Renee Smith  
Shannon & Tanya Smitherman  
Steve Spencer  
Suzanne & Gary Stell

Dan & A. K. Stewart  
Bishop Ray & Susan Sutton  
Carl & Shelley Swan  
Shelley Swan  
Jonathan & Sarah Swartz  
Swearingen Family  
Dianne Hardin Sztamenits  
Scott & Tatum Tuthill  
Dee & Trey Velvin  
The Vitullo Family  
Aida Walter-Reid & Bill Reid  
Daniel & LaDana Washburn  
Ashley Watson  
WDW Financial  
Mr. & Mrs. Andrew Weinberg  
Keri & Brad Weinstein  
In honor of Garrett & Gracie White  
Emily & Brian Sarche  
Dania Wierzbecki  
Diane T. Williamson  
Tracy Wilson  
Kathleen Wohlgehausen  
Christian Wolf  
Scott & Dawn Woodruff  
Cloyse & Kerri Woolley  
Melanie Young & Tom Dehmer  
Mr. & Mrs. Joe Zasa



Gifts made possible this room on our new campus

# STAMPEDE AUCTION DONORS 2020

Anonymous  
 Ally & Sami Abbasi  
 Kimberly Aaron  
 Craig Abbott  
 Absolute Zero Cyro  
 Connie Akgerman  
 Sandy Alarcon  
 Kim Devlin Allen  
 ALTO  
 Amazing Lash Studio  
 Alex Anderson  
 Giovanna & Michael Anderson  
 Philip & Amanda Armstrong  
 Kimberly Armour  
 Chaitalee Arora  
 Ashton Podiatry Association  
 Athleta  
 Jennifer & William Attmore  
 Ms. Austin  
 Claire & Aaron Babcock  
 Amy Rosellini & Benjamin Bain  
 Kim Ball  
 Heather & Alex Barbieri  
 Mellany Barnett  
 Win Bell  
 Bellacures  
 Ben E. Keith Beverages  
 Earle Bensing  
 Jennifer & Frank Beres  
 Jill & Jeff Bergus  
 Kristi Bernstein  
 Ms. Shannon Bertino  
 Bibbentuckers  
 Amy & Marc Biesman  
 Nick Biewenga  
 Billy Bob's Texas  
 Kimbers & Derek Bogard  
 Elizabeth & Jonathan Bond  
 Bosco Pet Photography  
 Anjanette Boul  
 Bonnie Boyle  
 Anne Bradley  
 Dawn Brady  
 Elisha & BJ Brandenberger  
 Dina & Rob Brantman  
 Kimberly & Jay Brigham  
 Ms. Carol Brock  
 Broussard & Evans Advisory  
 Amie & Chris Brunner  
 Theresa & Don Bruno  
 Lisa & James Buchanan  
 Tari & Bill Bulmer  
 Ms. Kaye Burkhardt  
 Patti Cadigan  
 California Pizza Kitchen  
 Camp Twin Creeks  
 Marcia & Joel Campagna  
 Campisi's Restaurant  
 Tracy Cantrell  
 Capital Distributing  
 Carol Slobin Fine Art  
 Hunter & Megan Carpenter  
 Amber & Travis Carter

Sadie & Colin Carter  
 Angela Wommack & Ted Casey  
 Celebration Restaurant  
 Chamberlain Studios of  
 Self Defense  
 Dr. James & Rebecca Chanez  
 Jenny Cheatham  
 Cherry Pie Designs  
 Family of Drew Clane  
 Jim Clark  
 Julie Malanoski & William Cleary  
 Britt Coke  
 Anne Hendrick-Thomas  
 Liza & Justin Collins  
 Collins & Rogers Advisory  
 Christi & Robert Contreras  
 Kelly & Mark Cooper  
 Cooper Clinic/ Nutrition  
 Services  
 Michelle Coppolino  
 Irma Cornejo  
 Elizabeth Corwin  
 Lacy & Ryan Cox  
 Louise Crain  
 Bob & Christy Craycraft  
 Julie & Curt Crozier  
 CycleBar  
 Dallas Holocaust Museum  
 Dallas Pediatric Associates  
 Dallas Zoo  
 Christine Davis  
 Gabriella & Dan Davis  
 Macey Davis  
 Rosemarie Delcore  
 Iain Day & Christina DeLeon  
 Christina deLeon Day  
 Wendy & William Deppe  
 Detullio & Dodd  
 Courtney & Aaron Dios  
 Jennifer & Richard Dix  
 Dodson & Johnson Family  
 Mark Doom  
 Alexis & Richard Dopson  
 Jenny & Adam Dougherty  
 Kerry & JR Douglas  
 Drybar  
 Jenny Duncan  
 Michelle & Chris Dupre  
 Shannon & Philip Durst  
 Michelle & Allen Dye  
 Lauren & Justin Eastburn  
 Ricki & Randy Ebner  
 Mark Edmisten  
 Carrie & Miles Eggart  
 Mr. & Mrs. James Ehlert  
 Element Moving  
 Elements Massage  
 Carlton Ellis  
 Kristin & Bryan Elvebak  
 Elvebak Orthodontics  
 Nicole & Joshua Emmet  
 Jessica & Tim Euting  
 Teresa & Scott Evans

Mandy & Chase Evans  
 Vangie & Marc Farmer  
 Fee, Smith, Sharp & Vitullo  
 Kelly Feick  
 Nancy Ferguson  
 Tasha & Justin Ferguson  
 Fisher, Lee, & Smith Advisory  
 Dave Fletcher  
 Flower Child  
 Fort Worth Museum of  
 Science & History  
 Fort Worth Zoological  
 Friends of Shelton  
 Frost Bank  
 Kate & Ryan Fulton  
 Jennifer & Mark Gampper  
 Audrey Garnett  
 Carole George  
 Heather & James Gianopoulos  
 Gretchen Nieto-Giovanini  
 Laura & Tommy Gilbreath  
 Courtney York & Ross Gilger  
 Jennifer & Ryan Goeres  
 Judith Goins  
 Ms. Donna Gonzalez  
 Susan & Chris Goodiel  
 Kaie & George Goodno  
 Laura Gordon  
 Kathleen Goree  
 Grand Targhee Resort  
 Kal Grant  
 Great Outdoor Sub Shops  
 Brittany & John Graham  
 Prudence Graham  
 Jennifer & Silas Graham  
 Jennifer & Thomas Greenlee  
 Joanna Grovenstein  
 Kari Grzych  
 Pauline & Joe Guerra  
 Daniel & Amanda Gunn  
 H5 Trophy Ranch  
 Lynette Hagaman  
 Thelma Hall  
 Lisa & Tim Harrigan  
 Jennifer Harriman  
 Ms. Harris & Ms. Austin  
 Kimber & Michael Hartmann  
 Meredith & Mark Hayes  
 Haynsworth Photography  
 Matthew Hebard  
 Devra & David Helffrich Jr  
 Anne Hendrick-Thomas  
 Sharon & Don Henley  
 Sarah & Bryn Henry  
 Family of Wyatt Henry  
 Beth Henton  
 Hiatus Spa & Retreat  
 Erin Hickman  
 Hilbert & Womble  
 Stephen Hipp & Brian Rogers  
 John Hodges  
 Julianne Hoerman  
 Stephanie & Travis Hollman

Garnett & Michael Holmes  
 Mary Jane & William Holmes  
 Hopdoddy Burger Bar  
 Lynne & William Howison  
 Lance & Jessica Hudes  
 Anné Hughes  
 Anné Hughes/ Blair King  
 Jennifer & David Hull  
 Heather Hunt  
 Elizabeth & Taylor Hunt  
 i Fratelli  
 il Bracco Restaurant  
 Elizabeth & Salim Jabbour  
 James Avery Artisan Jewelry  
 JD's Chipperry  
 Elizabeth & Damian Jennette  
 Stacey Segal & Debbie Jenkins  
 Cheri Johnson  
 Grant Johnson  
 Melissa Johnson  
 Paige Johnson  
 Jennie & Charles Jones  
 Gene & Jerry Jones Family  
 Foundation  
 Laine Jones  
 Judy Nordseth Photography  
 Kimberly & Ryan Kahn  
 Kasart  
 Barbara Katz  
 Kris Keesy & Rob Collier  
 Amy Kelton  
 Kendra Scott  
 Kenny's Italian Kitchen (Village  
 on the Parkway)  
 Kent Rathbun Concepts  
 Blair King  
 Alex Klitsch  
 John Klitsch  
 Ms. Linda Kneese  
 Sheri & Robert Kunovich  
 Kona Ice  
 Wendy & Michael Konradi  
 Krug & Wilson Advisory  
 Monica & Jan Kruger  
 Ku Sushi Japanese Cuisine  
 Meredith Ladd  
 Zac Ladd  
 Traci & Orone Laizerovich  
 Ashley & Allen Lamb  
 Lyn & Bill LaMothe  
 Tina Larson  
 Coach Chuck Locke  
 Elizabeth Lopez &  
 Francisco Ledesma  
 Lee & Smith Advisory  
 Kerith Leffler  
 Claudia & Martin Leon  
 Lepley Orthodontics  
 Ann & Troy Lindsey  
 Lisa Buchanan Designs  
 Little Greek Restaurant  
 Live Nation  
 Shelly & Chris Lloyd



<p>Julie Lo Coach Chuck Locke Lombardi Family Concepts Lower School Speech &amp; Language Lucky Dog Bakery Leigh Erin &amp; David Lundy Kimberly &amp; John Lynch Beth Macrini Beth Burk &amp; Alexis Magids Makler Optical Charles (Chuck) Marlett James Marlett-Vasilas Marriott Dallas Plano at Legacy Town Center Gustav Marroquin Sara &amp; David Martineau Mash'd Gayla &amp; James Mathis Michelle &amp; Josh McArtor Carmen &amp; Michael McCabe McCann &amp; Miller Advisory Michael &amp; Kym McCranie Beth &amp; Kevin McDermott Andy &amp; Beth McDonald Heather &amp; Eric McGehearty McKamy Hayes Group Tiffany &amp; Stephen Meier Kristi Meinecke Phil Melton Paula &amp; Douglas Menendez Mr. William Mercer Jessica &amp; Colin Meyer Middle School Speech Department Blair Miller Lindsey &amp; Justin Miller Dr. &amp; Mrs. Greg Miller Mine Boutique Doyletta Minix &amp; Rocky Padilla Mirror Art Design Traci Moilanen Traci Moilanen Terry &amp; Jeffrey Moody Moody Foundation Tessa &amp; Travis Moss Move Studio Amie Moyer Moyer &amp; Truitt Advisory Ms. Harris &amp; Ms. Austin Ms. Miller - Ms. McCann Ms. Sanders, Ms. Wright, Ms. Smart Ms. Taylor &amp; Ms. Zeavin Mr. &amp; Mrs. Chris Myers Patricia &amp; Robert Myles Lisa Najid Neiman Marcus at Willow Bend Tricia &amp; William Neuhoﬀ Nick &amp; Sam's Rene &amp; Jaime Noris North Dallas Veterinary Hospital NorthPark Center Jill &amp; Mike Nowell Gina &amp; Dan O'Donnell</p>	<p>Tammy &amp; Walter Olsen Henrik Olund Mr. &amp; Mrs. Michael O'Neill Jay Oppenheimer Paige &amp; Charles Orth Traci &amp; Sean Owen Pampillonia Jewelers Paper Affair Pappas Restaurants Park Place Lexus of Plano Darees &amp; Mark Patrick Lamarion Patterson Cheryl &amp; Larry Patterson Aphrodite &amp; Sam Paulos Que Le &amp; Robert Pechar Gina Rangel &amp; Andrew Pena Keith &amp; Brooke Peterson Dr. Joyce Pickering Kacy &amp; Alan Pierce Lindy &amp; David Pierre Melissa &amp; Zoltan Pocza Hayley &amp; Pete Podesta Melissa Pogue Michele &amp; Steve Pokorny Erika &amp; Edward Popejoy Paige &amp; Michael Poray Kara &amp; Jeff Prescott Kara &amp; Jeff Prescott Jill &amp; Lance Price Shaina &amp; David Primeaux Donald Puckett Adrienne &amp; Clark Pulliam Pure Barre of Preston Hollow Peggy Purser Kent Rathbun Nikki &amp; Tony Ramji Hunter &amp; Amanda Ramsey Brandy &amp; Bryan Redmond Nellie Sciutto &amp; Chris Reeg Renaissance Dallas @ Legacy West Jennipher &amp; Blake Rice Alisa &amp; Ryan Richardson Will Riemer Michelle &amp; Marco Rivera Laurie &amp; Van Roberts Leonard Roberts Robin Jackson Photography Chris &amp; Eva Robles Dr. &amp; Mrs. Reynaud Rodrigue Shelly &amp; Zack Rogers Rosen &amp; Wrinkler Advisory Amy &amp; Tres Rouquette Lisa Rothstein Roti Royal China Angela Ruble Ashley &amp; Jeff Rupp Jennifer Russell Cherise Sallaway Ms. Sanders Emily &amp; Brian Sarche Susmita Sarma Nancy &amp; Mike Sawicki Scardello Cheese</p>	<p>Melissa &amp; Sam Schachter Heather &amp; Ryan Schamerloh Robyn &amp; Jon Schimmels Rachel &amp; Jason Schmidt Family of Alex Schnudt Screenmobile of Dallas Amy &amp; Dax Seale Seale Wealth Management Eija &amp; Geoffrey Seaman Julie &amp; Lyle Seedig Stacey Segal Robin &amp; Robert Sells Sevy's Grill Carrie Shallingburg Lara &amp; Stephen Shankle Marc Shepherd Carrie &amp; Jon Shillingburg ShinSei Corrie &amp; Todd Shores Gigi &amp; Eric Shryer Andi &amp; Cash Shurley Julia Simon Kate &amp; Scott Simons Sonja &amp; Mike Skaggs Ski Taos Anna &amp; Kevin Slaton Jessica &amp; Dan Slaven Alicia Slay Ms. Smart Patricia &amp; Emmitt Smith Tia &amp; Doug Smith Heidi Snadon Melissa Solomons Sorted Out, LLC Karen &amp; Dave Spain Speech Clinic at Shelton SpeedZone of Dallas SportsClips Sprinkles Teresa Stadelman Melissa Stallings Stanley Korshak Brandy &amp; Ryan Stafford Tina &amp; Dan Stansbury State Fair of Texas Stein &amp; Garza Advisory Suzanne &amp; Gary Stell Taylor Stell Stevens &amp; Sudler Advisory Neill Strickland Kristin &amp; William Strickland Jeff &amp; Dena Stroh Allison &amp; Shawn Stuckey JoAnna &amp; Peter Sudbeck Subdeck, Nelson, &amp; Cantrell Families Michelle &amp; Charles Summerall Anila &amp; Bharat Sundaram Susie Cakes Susan Sutton Shelley &amp; Carl Swan Sarah &amp; Jonathan Swartz Lynn &amp; Jeff Swearingen Dianne Sztamenits Ms. Leigh Taylor</p>	<p>TekHelp Department @ Shelton Texas Air Systems Texas Coffee Co Texas Discovery Gardens Texas Motor Speedway Anne Thomas Tidy for Good Tongue in Cheek Ice Cream Tootsies Top Ten Nails Angelika &amp; Fernando Torres Emily &amp; David Touchstone True Food Kitchen Amy Turner Christopher Turner Tatum &amp; Scott Tuthill Lisa Tyler Jennifer &amp; Jeremy Tyrrell United Mechanical Utopia Food &amp; Fitness Ken Utz Tabitha Valdez Mythili &amp; Nikhil Venkatesh Manereet Tanasarnsaenee &amp; Nalin Vij Julie &amp; Charlie Visconsi Holly &amp; Lenny Vitullo Bev &amp; Alan Vuckovich Karen &amp; Blake Walker Deanna Wallace Amber &amp; Matt Wallock LaDonna &amp; Daniel Washburn WaterTower Theatre Matt Watson Brandy &amp; Mark Wayne Gary Webb Kinsey &amp; Brent Weegar Lauren &amp; Steve Weiner Sara White Laura &amp; Mark Whitfield Whole Earth Provison Co. Conan Gomez &amp; Dania Wierzbicki Kimberly &amp; Matthew Williams Bobbie &amp; J.R. Williams Caroline Wilson Jennifer Willson Mary &amp; John Wilson Kelly &amp; John Wilson Elizabeth Wilson Marina &amp; Christian Wolf Estela &amp; Kevin Wolfe Alicia &amp; Scott Wood Ellen Woodbridge Woodhill Dental Specialties Woodhouse Day Spa Ms. Wright Mr. &amp; Mrs. Timothy Wyatt Jeff &amp; Yvonne Yeager Ylang 23 YOLK Savannah Zasa Ms. Jennifer Zeavin Michelle Zivaljevic</p>
---	---	---	---

# HOLIDAY HAPPINESS 2020



Kimberly Aaron  
Ally Abbasi  
Paul Aidala  
Sandy Alarcon  
Michael Alexander  
Ursula Alford  
Shema Ampolini  
Tessa Anderson  
Giovanna Anderson  
John Andrews  
Crystal Androvett  
Penny Apollaro  
Brooke Armbrister  
Samantha Armstrong  
Colleen & Roy Ashton  
Chere Babcock  
Kimberly Ball  
Lindsay Batie  
Jen Becker  
Lauren Belcher  
Adi Beltzman  
Shana Bentson  
Jill Bergus  
Kristi Bernstein  
Shannon Bertino  
Kimberly Bice  
Amy Biesman  
Nicklaus Biewenga  
Thomas Billings  
Sarah Bloom  
Amy Bloom  
Michelle Bogan  
Derek Bogard  
Locie Boggs  
Kim Bohling  
Anjanette Boul  
Anne Bradley  
Elisha Brandenberger  
Cristy Brandenburg  
Adrienne Bransky  
Dina Brantman  
Kristin Brockette  
Lisa Buchanan  
Tari Bulmer  
Diane Byrd  
Stephanie Cabrera  
Steve Cadigan  
Monique Callagy  
Megan Carpenter  
Angela Carrier  
Amber Carter  
David Caviness  
Jennifer Cecil  
Keri Chambers  
Emily Chapman  
Stephanie Chloupek

Nancy Christensen  
Samantha Clague  
Tonya & Andy Clark  
Barbi Cohen  
Mary Cohen  
Dana Coin  
Daniel Collins  
Arthur Cooper  
Kelly Cooper  
Niesha Copeland  
Michelle Coppolino  
Elizabeth Cornelius  
Elizabeth Corwin  
Lacy Cox  
Jennie Cox  
Christy Craycraft  
Tiffany & Craig Crock  
Julie Crozier  
Paula Crumrine  
Joanna Cunningham  
Katherine Curtis  
Amy Curtis  
Kimberly Curvey  
Chris Cuzalina  
Christine Danuser  
Deborah Dauber  
Macey Davis  
Macey Davis  
Gabriella Davis  
Christopher Davis  
Leigh Dayton  
Susan de la Cerda  
Marie Deasy  
Michele Degani  
Julie Del Core  
Christina deLeon  
Michael Devereaux  
Kim Devlin-Allen  
Jennifer Dix  
Kim Dixon  
Natalie Dodge  
Amy Dodson  
Will Dorward  
Kerry Douglas  
Michelle Dupre  
Michelle Dye  
Sid Earle  
Kellie Early  
Stephanie Edmisten  
Kristin Elvebak  
Nicole Emmett  
Mandy Evans  
Michelle Falk  
Michelle Fallon  
Barb Farmer  
Marc Farmer  
Nicki Farris  
Kelly Feick  
Melanie Feigenbaum  
Liz Feldman  
Matthew Feldman  
Jerry Fenerty  
Soeon Fenyes  
Pamela Fick-Guerra  
Marissa Fontanez  
Heather Foster  
Jill Frady  
Jennifer Frank  
Marty Frank  
Kate Fulton  
Sally Galbraith  
Jeff Galbraith

Jennifer Gampper  
Audrey Garnett  
Mahie Ghoraiishi  
Deborah Gibbins  
Tommy Gilbreath  
Ashley Givens  
Jennifer Goeres  
Michael Goldman  
Susan Goodiel  
Kathleen Goodno  
Laura Gordon  
Kendra Grace  
Jennifer Graham  
Prudence Graham  
Leah Grandstaff  
Jennifer Greenlee  
Paula Greenman  
Kari Grzych  
Amber Guirguis  
Trey & Patricia Gum  
Amanda Gunn  
Kristin Gunnerson  
Tricia Gura  
Kaitlin Guthrow  
Adrian Hall  
Amanda Hansen  
Lisa Harrigan  
Amy & Erik Harrington  
Debbie Harris  
Molly Hayes  
Meridith Hayes  
Brettne Hemley  
Julie Henderson  
Pauline Henry  
Melissa Hensarling  
Beth Henton  
Erin Hickman  
Stephanie Hilliard  
Stephen Hipp  
Caron Hoffer  
Mary Holmes  
Mica Hopkins  
Savannah Hostin  
Amy Houstoun  
Sandy Howard  
Lynne Howison  
Lindsay Hudson  
Angela Hughey  
Jennifer Hull  
Elizabeth Hunt  
Michele Hunt  
Heather Hunt  
Laura Hurt  
Elizabeth Jabbour  
Renee Jansen  
Grant Johnson  
Melissa Johnson  
Caleb Johnson  
Elaine Johnson  
Karon Jones  
Jennie Jones  
Scott Jones  
Jodi Jones-Lee  
Maryanne Jouvenal  
David Junod  
Kimberly Kahn  
Karen Kaighan  
Kim Kamen  
Robert Kaplan  
Christine Keating  
Johanna Keen  
Kris Keesy

Natalya Kiley  
Anne Killebrew  
Carrie King  
Carrie Kirby  
Wayne Kling  
Leigh Koch  
Melinda Kollinger  
Michael Konradi  
Gil Krengel  
Sarah Krueger  
Jan Kruger  
Sheri Kunovich  
Julie Kuntz  
Quincy Lacerte  
Meredith Ladd  
Christina LaFleur  
Karen Laker  
Ashley Lamb  
Ashley Leake  
Tammy LeBlanc  
Kerith Leffler  
Jennifer LeLash  
Elyse Lemery  
Martin Leon  
Rebecca Leonard  
Valerie Levi-Derrick  
Shelley Lewis  
Shelly Lloyd  
Julie Lo  
Vivian Lombardi  
Elizabeth Lopez  
Shelly Love  
Lisa Lowry  
Leigh Erin Lundy  
Kimberly Lynch  
Philip Macha  
Sara Macha  
John Macrini  
Beth Macrini  
Julie Malanoski  
Chrissy Mantzuranis  
Cynthia Marchant  
Colleen Marchetti  
Stacey & Kevin Maris  
Chris Markey  
Charles Marlett  
Amanda Marrone  
Billy & Shannon Martin  
Jennifer Matheny  
Jeanne Matthews  
Lindsay Mayer  
Donielle Mayes  
Jana McAnally  
Carmen McCabe  
Jennifer McCann







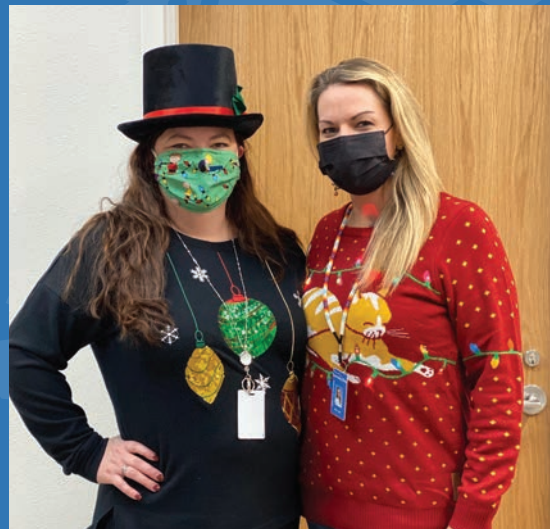
Heather McClure  
Jenny McClure  
Kristina McCook  
Beth McDermott  
Elizabeth McDonald  
Sharon Mceachern  
Jordana McGee  
Jennifer McNairy  
Jill McSorley  
Tiffany Meier  
Mary Melle  
Phil & Reagan Melton  
Paula Menendez  
Holly Merritt  
Andrea Metrailler  
Colin & Jessica Meyer  
Blair Miller  
Lindsey Miller  
Deborah Mitchell  
Lisa Mitts  
Lanier Monk  
Amy Monroe  
Barbara Montero  
Marissa Montgomery  
Terry Moody  
Carrie Moore  
Dina Morales  
Christie Morris  
Tessa Moss  
DeLana Mullins  
Marissa Murchison  
Adrienne Murphy  
Stefani Musick  
Sarah Mutscheller  
Debbie Myers  
Michele & Greg Nelson  
John Newby  
Gretchen Nieto Giovanini  
Karen Nixon  
Rene Noris  
Mike and Dss Jill Nowell  
Katie O'Neil  
Mallory O'Connor  
Tammy Olsen  
Jill O'Neill  
Jennifer Ortiz  
Anne Osborn  
Gabrielle and Luther Ott  
Nilly Ovadia  
Traci Owen  
Kayla and Mark Owens  
Christine Paddock  
Chase Palamar  
Dana Palmer  
Heidi Parker  
LaMarion Patterson  
Aphrodite Paulos  
Mary Jean Pearle  
Gina Pena

Laura Pendleton  
Ashley Peron  
Alan Pierce  
Lindy Pierre  
Hayley and Pete Podesta  
Michele Pokorny  
Erika Popejoy  
Anastasia Popova  
Paige Poray  
Kathleen Power  
Darcy Preheim  
Kara Prescott  
Melissa Price  
Lance Price  
Shaina Primeaux  
Lara Proctor  
Amy Puig  
Sondra Puorro  
Nikki & Tony Ramji  
Amanda Ramsey  
Kristie Raymond  
Nico Raynaud  
Regan Redstone  
Holly Reichenstein  
Jennipher Rice  
Caroline Rinaldi  
Michelle Rivera  
Laurie Roberts  
Tana Roberts  
Jennifer Robinson  
Chris and Eva Robles  
Sonya Rodrigue  
Aimee Rodriguez  
Shelly Rogers  
Lisa Rothstein  
Meridith Royall  
Staci Rubin  
Stephanie Rubin  
Rachel Rucker-Schmidt  
Ashley Rupp  
Clarke and Lynda Russell  
Tara Rydl  
Wendi Ryland  
Christy Ryzman  
Cherise Sallaway  
Emily Sarche  
Suzanne Sauder  
Darcy Scarborough  
Sam Schachter  
Michele Schaeffer  
Ashley Scheer  
Erin Schendle  
Alysa Schildcrout  
Stacey Schulte  
Amber Seale  
Robin Sells  
Marci Serota  
Abhijit Shah  
Lara Shankle  
Heather Shapan  
Shannon Sharp  
Patrick Sherman  
Erin Sherman  
Carrie Shillingburg  
Liz Shmueli  
Corrie Shores  
Meagan Shoults  
Jaime Shrayber  
Matt and Janna Shuford  
Andrea Shurley  
Rennie Silverman  
Mary Kate Simons  
Melissa Sipes  
Anna Slaton  
Kelly Slaven  
Jessica C. Slaven

Cindy Slavin  
David Smades  
Julianna Smith  
Tia Smith  
Renee Smith  
Missy Spears  
Laurie Sprouse  
Brandy Stafford  
Joel Steelman  
Lisa Sterling  
Stephanie Stevens  
Denise Stewart  
Dan & AK Stewart  
Kristi Stokes  
Vanessa Stone  
Dena Stroh  
Michael Stuart  
Allison Stuckey  
Jenny Stutler  
JoAnna Sudbeck  
Michele Summerall  
Anila Sundaram  
Shelley Swan  
Lynn Swearingen  
Beau Taylor  
Jennifer Thompson  
Emily Touchstone  
Amanda Tracy  
Rene Trevino  
Kelly Turner  
Tatum Tuthill  
Ken Utz  
Robert Vannuccini  
Julie Visconsi  
Mark & Andrea Vitek  
Holly Vitullo  
Jean Voute  
Ginny Walker  
Rachel Wallace  
Amber Wallock  
Aida Walter-Reid  
LaDana Washburn  
Stephanie Watson  
Brandy Wayne  
Katherine Weaver  
Sally Weeks  
Melanie Weinberg  
Steven Weiner  
Keri Weinstein  
Eleise Weisberg  
Kristin Wertz  
Lawrence Westerman



Amy Whaley  
Jennifer Whitaker  
Sara White  
Laura Whitfield  
Jeff Whitfield  
Elizabeth Wierzbicki  
Dania Wierzbicki  
Shelly Wilfong  
Kimberly Williams  
Allison Williams  
Jennifer Willson  
Mary Wilson  
Caroline Wilson  
Elizabeth Winkler  
Jason Wohlgehagen  
Dorothy Wolf  
Kevin Wolfe  
Andrea Wood  
Alicia Wood  
Heather Wood  
Kerri Woolley  
Elizabeth Wright  
Jeff & Yvonne Yeager  
Erin Yoakam  
Courtney York Gilger  
Melanie Young  
Brooke and Joe Zasa  
Michelle Zivaljevic  
Celeste Zuch



# SHELTON SCHOOL 2020-2021 BOARD OF TRUSTEES

*I offer a heartfelt thank-you to all Shelton staff, administration, board, and parents for your dedication to Shelton during this unprecedented time in our history. Our staff and administration have been amazing in working together in unimaginable ways to make Shelton a better place than we were. We are the largest school in the world for children with learning differences, and you are the heart and soul of Shelton. I am awed by all you have done and am proud to be associated with you and this amazing school.*

*We ended school year 2019/2020, began 2020/2021 in the world of COVID-19, and in the middle, we made a monumental move to our new campus. I look forward to a time, in the near future, when we can truly enjoy our new home all together at one time.*

*Please know that entire board salutes and supports you and thank you for making Shelton the great school we are today!*

**Gary L. Webb**  
Chairman of the Board

## Trustees

Edwin S. Bell	Kenneth J. Hughes
Bert Blair	Charlotte Jones
J. Crozier Brown	John Newby
Diane Byrd	Barbara Novotny
William Keith Conlon	Patricia A. Pace
Charles G. Dannis	William Frederick Rapier
R. Greg Delagi	Chuck Rubin
Jennifer Dix, PhD.	Janice Ryan
Christopher K. Dreiling, M.D.	Kelli Valade
Christopher Geymuller	Phillip F. Wiggins
Tommy Gilbreath, Jr.	Bobbie Sparks Williams
Heather Hunt Graham	Keith Williams
Susan Griffiths	Celeste Zuch
Clifford Hahne	
Edward J. Heffernan	
David T. Helffrich, Jr.	

## Executive Committee

Chairman of the Board <b>Gary L. Webb</b>	Secretary <b>Leon Kaplan</b>
Vice Chairman <b>Paul Neubach, M.D.</b>	Treasurer <b>Glen Brown</b> (ex-officio member)
Chairman Emeritus <b>James B. (Boots) Reeder</b>	Additional Members <b>Benton W. Markey</b> <b>David Martineau</b> <b>Holly Vitullo</b> <b>Teresa L. West</b>
Executive Director/CEO <b>Suzanne Stell</b>	
Executive Director Emerita <b>Joyce S. Pickering, Hum.D.</b> (ex-officio member)	

## New Faces On Board



### Greg Delagi

Greg Delagi and his wife Beth are parents to five children, including Ben, a Shelton junior. Their son Evan graduated from Shelton in 2017 and currently attends Syracuse University.

Greg is a former senior vice president and general manager of Texas Instruments (TI). A 35-year TI veteran, Greg held a number of leadership roles, the most recent leading TI's Embedded Processing business, where he managed its transition into a high performing business with a broad worldwide customer base, diversity of growth engines and expanded margin contribution. Greg is a graduate of Nichols College in Dudley, MA, where he earned a Bachelor of Science in Business Administration.



### John Newby

John Newby and his wife, Maria "KiKi" Karos, have two teenage children. The older, Julia, is at the University of Georgia in Athens, GA. Carson is a former Shelton student (Grades 3-9) who graduated high school in May from Prince of Peace Christian School in Plano and is now attending the University of Wisconsin at Madison.

John is a founding partner of Mullis Newby Hurst (MNH), an independent insurance agency specializing in insurance and surety bonds for commercial contractors. Founded in 2002, MNH has four locations in Texas and Arkansas and was the Southwest's largest construction-only agency before selling to Acrisure LLC in late 2015. John is the managing partner of MNH/Acrisure and oversees all production, operations and financial administration with a team of 45.

John has a bachelor's degree in economics from the University of Michigan in Ann Arbor and a Master of Business Administration from Pepperdine University.



### Celeste Zuch

Celeste Zuch and husband Kurt are parents to two Shelton students – sons Andrew (freshman) and Connor (Grade 8). Daughter Kaki attends Parsons School of Design in New York City. Their other son, Alexander, is a senior at St. Mark's School, where Celeste served as Homecoming Co-Chair.

Celeste and Kurt decided to put their skills and acquired experience to use by becoming entrepreneurs. They established Pathways Consulting, a software consulting firm specializing in the utility industry. The firm was only two years old when it was sold to a public company that was itself later acquired by Computer Associates.

Celeste is a graduate of the McIntire School of Commerce at the University of Virginia (UVA).





### Class of 2020 Heads for New Horizons

Seventy-one seniors received 291 acceptances to 119 colleges and universities and together earned \$4,483,064 in merit scholarships. We celebrate their diverse paths and look forward to following their futures.

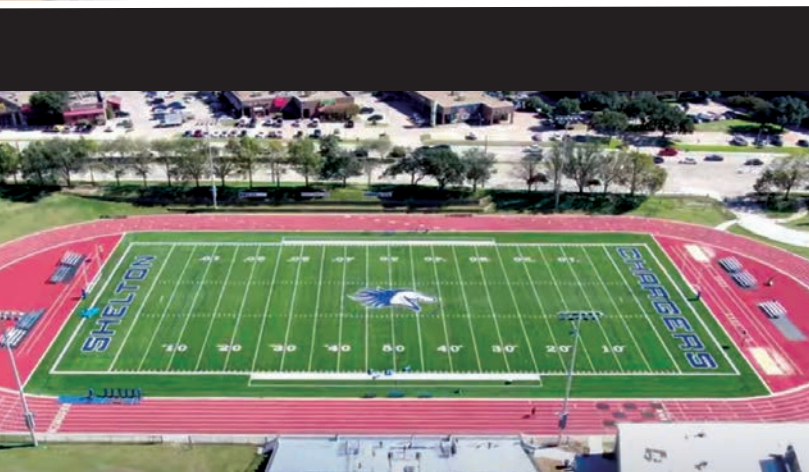
Abilene Christian University  
University of Alabama at Birmingham  
University of Alabama  
Arizona State University  
The University of Arizona  
University of Arkansas  
Auburn University  
Austin College  
Bard College  
Baylor University  
Beacon College  
Berklee College of Music  
Brown University  
Butler University  
California Lutheran University  
Cal Poly, San Luis Obispo  
Chapman University  
College of Charleston  
Clemson University  
Collin College  
University of Colorado at Boulder  
Colorado State University  
Dallas Baptist University  
Dean College  
Defiance College  
University of Delaware  
University of Denver  
DePaul University  
Drake University  
Drexel University  
Elon University  
Embry-Riddle Aeronautical University

Emerson College  
Emory and Henry College  
Florida College  
University of Florida  
University of Georgia  
Gonzaga University  
Grayson College  
Hardin-Simmons College  
High Point University  
Houston Baptist University  
University of Houston  
University of Illinois at Urbana-Champaign  
Indiana University at Bloomington  
The University of Iowa  
University of Kansas  
University of Kentucky  
Kenyon College  
Lamar University  
Louisiana State University  
Loyola University New Orleans  
Lynn University  
University of Mary Hardin-Baylor  
University of Maryland, Baltimore County  
Marymount Manhattan College  
Massachusetts College of Liberal Arts  
McKendree University  
Michigan State University  
University of Minnesota- Twin Cities  
University of Mississippi  
Missouri Southern State University

Missouri State University  
University of Missouri- Columbia  
Montclair State University  
University of Nevada- Las Vegas  
University of New Mexico  
University of North Texas  
University of Northern Colorado  
Northwest Florida State College  
Oklahoma State University  
University of Oklahoma  
University of Oregon  
Pace University, New York City  
Penn State University  
University of Pittsburgh  
Purdue University  
Queens University of Charlotte  
Rhode Island School of Design  
Rhodes College  
Richmond, The American International University in London  
Sam Houston State University  
Savannah College of Art and Design  
Sewanee: The University of the South  
Smith College  
Southeast Missouri State University  
Southern Methodist University  
Southwestern University  
Spring Hill College  
St. Edward's University  
St. Francis Xavier University  
St. John's College  
Stephen F. Austin State University

Syracuse University  
The University of Tampa  
Texas A&M University  
Texas A&M University- Kingsville  
Texas Christian University  
Texas State University  
Texas Tech University  
Texas Wesleyan University  
The University of Texas at Arlington  
The University of Texas at Austin  
The University of Texas at Dallas  
The University of Texas at Permian Basin  
The University of Texas at San Antonio  
The University of Texas at Tyler  
The Art Institute of Dallas  
The New School  
Trinity University  
Tufts University  
University of Tulsa  
Valparaiso University  
Vassar College  
Virginia Tech  
University of Washington- Seattle  
West Texas A&M University  
Western Kentucky University  
Whitman College  
William Paterson University of New Jersey  
University of Wyoming





## Shelton School 2020-2021 Calendar Clips

### MARCH

- 15 - 19 Spring Break
- 26 Parents' Association *Stampede* Auction

### APRIL

- 2 No School—Easter Holiday

### MAY

- 7 Mayfest and Powder Puff Game
- 22 Senior Graduation
- 26 Parent Conferences
- 31 No School—Memorial Day

### JUNE

- 14 *Summer, the Shelton Way* Programs
  - Summer School Scholars
  - Speech, Language, Hearing
  - Teacher Training
  - Sports

