

MARCH 2021

IN-PERSON

UPDATE



CONTENTS

Information you'll find:

- In-Person so far
- Timeline
- In-Person: 3 IMPORTANT questions before arrival
- Schedule
- Arrival, Departure, Bussing & Traffic Safety
- Visitors on Campus
- Restroom Procedures
- Meals
- Potential Positive Case
- Parent Conferences
- Resource Links

IN - PERSON

- TK = 11 SCHOLARS - 1 CLASS
- K = 77 SCHOLARS - 4 CLASSES
- 1ST = 68 SCHOLARS - 3 CLASSES
- 2ND = 61 SCHOLARS - 2.5 CLASSES
- 3RD = 55 SCHOLARS - 2.5 CLASSES

TOTAL: 272 SCHOLARS, 13 CLASSES

OUR IN-PERSON SO FAR

TOTAL

428 SCHOLARS, 19 CLASSES

Soon to Join

- 4TH = 46 SCHOLARS - 2 CLASSES
- 5TH = 52 SCHOLARS - 1.5 CLASS
- 6TH = 58 SCHOLARS - 2.5 CLASS

TOTAL: 156 SCHOLARS, 6 CLASSES



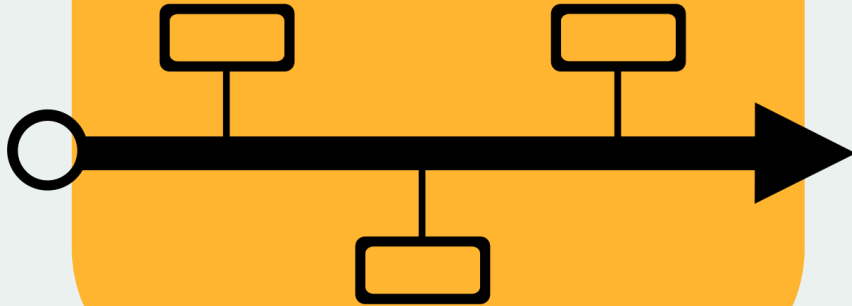
Hapgood ASES CURRENTLY ENROLLING

The Lompoc Boys & Girls Club ASES Program is currently enrolling students who are continuing with distant learning only for grades K-6th.

The program runs on Monday, Wednesday & Friday from 7:30am-4:00pm. For enrollment, please contact the Lompoc Boys & Girls Club at 805-736-4978



UPDATED TIMELINE



All students start their updated schedule/classes on Monday, March 8

Distance Learning:

- ❖ Scholars who are in Distance Learning Schedules will continue with their current schedule, some teachers may have changed

In-Person:

- ❖ Week 1: March 8th Grade TK–1st & Room 39
- ❖ Week 2: March 15th Grades 2nd–3rd & Room 24
- ❖ Week 3: March 22 Grades 4th– 6th

3 QUESTIONS BEFORE ARRIVAL:

Do you believe your child may have been in contact with an individual who tested positive for COVID-19?

Is your child ill with cold/flu-like symptoms?
(congestion, sore throat, persistent cough, difficulty breathing, headache, chills, loss of taste/smell, significant muscle pain/aches, diarrhea, or vomiting)

Does your child have a fever of 100.0° F or higher?

[LINK](#)

Can my child go to school today? (Answer the 3 questions in the blue boxes.)

Do you believe your child may have been in contact with an individual who tested positive for COVID-19?

YES

- Stay at home.
- Inform the school.
- Call your healthcare provider.
- Student must stay home for 14 days from date of last contact with positive individual.

NO

- Come to school.
- If your child has not been absent for illness, they may go directly to class.

Is your child ill with cold/flu-like symptoms?
(congestion, sore throat, persistent cough, difficulty breathing, headache, chills, loss of taste/smell, significant muscle pain/aches, diarrhea, or vomiting)

YES

- Stay at home.
- Inform the school.
- Rest and recover.
- Call your healthcare provider if symptoms worsen.

NO

- Come to school.
- If your child has not been absent for illness, they may go directly to class.

Does your child have a fever of 100.0° F or higher?

YES

- Stay at home.
- Inform the school.
- Rest and recover.
- Call your healthcare provider if symptoms worsen.

NO

- Come to school.
- If your child has not been absent for illness, they may go directly to class.

*** Notify the school if your child tests positive and follow the Return-to-School criteria before returning to school .**

RETURN-TO-SCHOOL CRITERIA:

If your child has fever or other symptoms that could be from COVID-19 and does not get tested **OR** is not cleared by their healthcare provider, it is assumed the child has COVID-19 and may **NOT** return to school until the **following 3** criteria are met:

1. Has been fever free for 24 hours without the use of medication
2. **AND** child has improved symptoms,
3. **AND** at least 10 days have passed since symptoms first appeared.

Has your child been fever free without medication for 24 hours **AND** were they seen by their healthcare provider and diagnosed with something other than COVID-19?

YES

- Come to school.
- Give the school nurse the healthcare provider note for return to school.

NO

Follow **Return-to-School Criteria.**

LUSD AM/PM Schedule

Monday

In-Person Instruction

Cohort A
8:00-10:30

Teacher Prep

10:30-11:15

Teacher Lunch

11:15-11:45

Classroom Cleaning

10:30-11:45

In-Person Instruction

Cohort B
12:00-2:30

Tuesday

In-Person Instruction

Cohort A
8:00-10:30

Teacher Prep

10:30-11:15

Teacher Lunch

11:15-11:45

Classroom Cleaning

10:30-11:45

In-Person Instruction

Cohort B
12:00-2:30

Wednesday

Virtual Day

Cohort A & B
online learning
Tk-6th 8:00-10:30

Teacher
Professional
Development, PLC,
Prep & Lunch

[LINK](#)

Thursday

In-Person Instruction

Cohort A
8:00-10:30

Teacher Prep

10:30-11:15

Teacher Lunch

11:15-11:45

Classroom Cleaning

10:30-11:45

In-Person Instruction

Cohort B
12:00-2:30

Friday

In-Person Instruction

Cohort A
8:00-10:30

Teacher Prep

10:30-11:15

Teacher Lunch

11:15-11:45

Classroom Cleaning

10:30-11:45

In-Person Instruction

Cohort B
12:00-2:30

Instructional Minutes

Tk/K: 150 minutes of in-person instruction and 30 minutes per day of asynchronous learning

1st-3rd: 150 minutes of in-person instruction and 80 minutes per day of asynchronous learning

4th-6th: 150 minutes of in-person instruction and 90 minutes per day of asynchronous learning

Nutrition

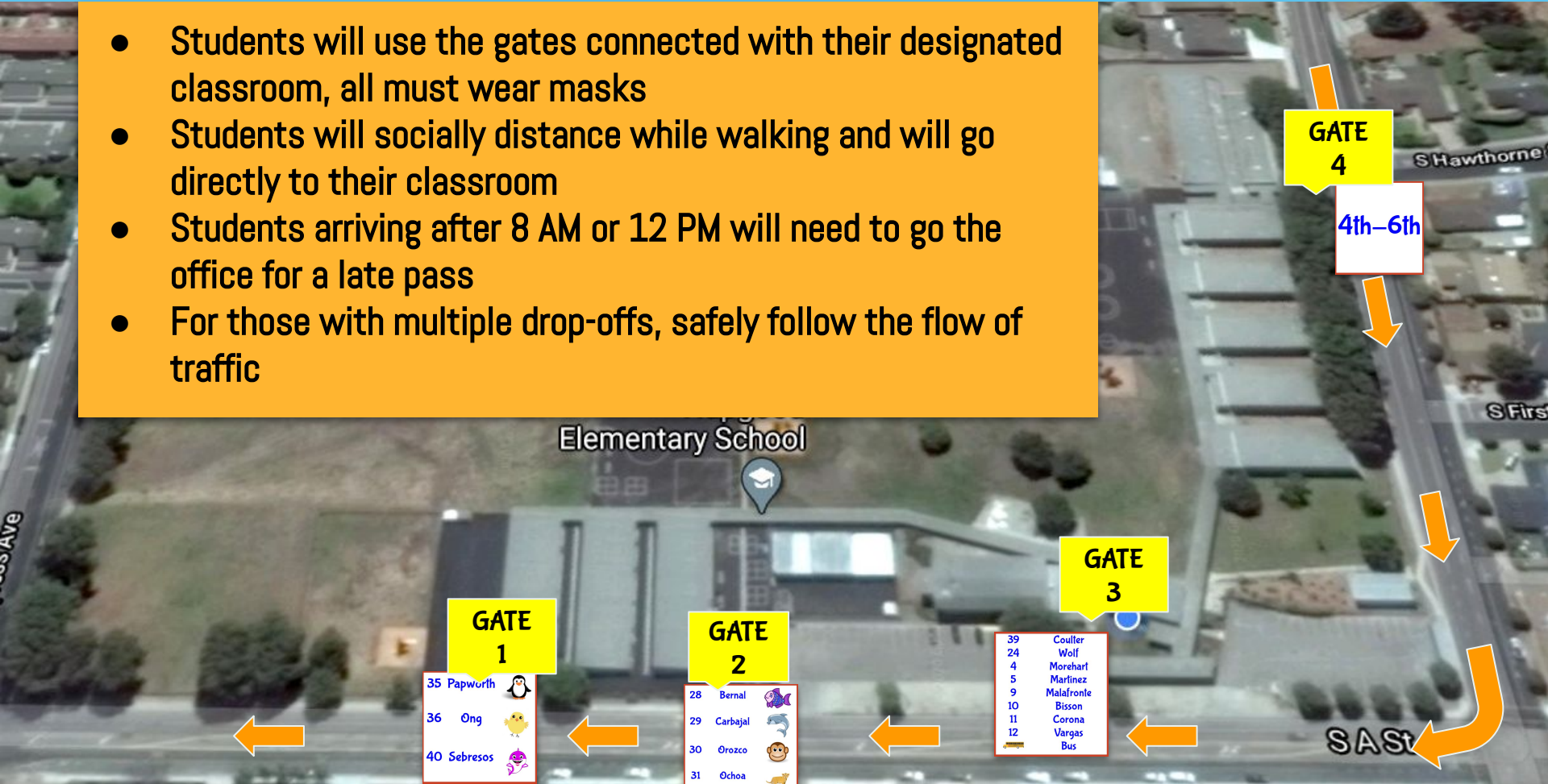
Cohort A GRAB & GO Meals: 10:30 am

Cohort B GRAB & GO Meals: 2:30 pm

100% Virtual Learner Meal Pick Up: Mondays, Wednesdays, Fridays from 11:00am-1:00pm at LHS, LVMS, CHS, & Maple

ARRIVAL, DEPARTURE & TRAFFIC SAFETY

- Students will use the gates connected with their designated classroom, all must wear masks
- Students will socially distance while walking and will go directly to their classroom
- Students arriving after 8 AM or 12 PM will need to go the office for a late pass
- For those with multiple drop-offs, safely follow the flow of traffic



Elementary School

GATE 4

4th-6th

GATE 3

GATE 1

GATE 2

35 Papworth
36 Ong
40 Sebresos

28 Bernal
29 Carbajal
30 Orozco
31 Ochoa

39 Coulter
24 Wolf
4 Morehart
5 Martinez
9 Malafronte
10 Bisson
11 Corona
12 Vargas
Bus

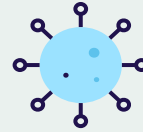
BUSSING

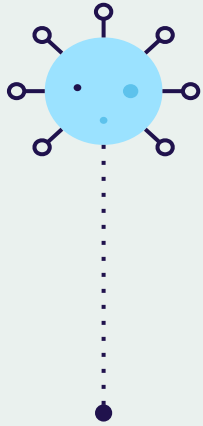
El Camino Bus Stop:

- Cohort A must be at the bus stop before **7:38** am.
- Cohort A will be dropped off after school at El Camino at **10:50** am.
- Cohort B must be at the bus stop by **11:40** am at the latest.
- Cohort B will be dropped off after school at El Camino at **2:50** pm.

SPED: Individual times and locations

ALL BUS STUDENTS WILL USE GATE #3





CAMPUS VISITORS

Due to COVID-19 & the recommendations of the Santa Barbara Public Health Office, LUSD must limit campus visitors for student and staff safety:

- Parents/Guardians can make appointments in the office, (limit 3 people, including staff)
- Waiting areas: designated gates, while maintain social distancing recommendations
- Visitors, even vaccinated, should not be allowed access to the main areas of campus while school is in session.

RESTROOM USE

- Students are permitted to use the restroom as needed.
- Only 2 students can use the restroom at a time
- Students will have designated restrooms that are nearest their classrooms
- All restrooms will be cleaned throughout the day

Hapgood
Elementary School

K-1



3-4

1-2

5-6

S A St

S Hawthorne

S First

MEALS

In Person Learners:

- ❖ Students will be offered breakfast and lunch at dismissal to take home for the next day.
- ❖ Meals will be sent home for virtual learning days.



UPDATE: Distance Learners can pick up meals from 2 **LOCATIONS:**

- ❖ **El Camino Learning Center**, MPR door on corner of West Chestnut & I Street
- ❖ **Maple High School**, 4010 Jupiter Ave
- ❖ **Days:** Mondays, Wednesdays, and Fridays
- ❖ **Times:** 11:00 AM–12:00 PM

LINK

POTENTIAL POSITIVE CASE

Any students or staff exhibiting symptoms should immediately be required to wait in an isolation area until they can be transported home or to a healthcare facility, as soon as practicable.

• Establish procedures to arrange for safe transport home or to a healthcare facility, as appropriate, when an individual is exhibiting COVID–19 symptoms:

- o Fever**
- o Cough**
- o Shortness of breath or difficulty breathing**
- o Chills**
- o Repeated shaking with chills**
- o Muscle pain**
- o Headache**
- o Sore throat**
- o New loss of taste or smell**



PARENT TEACHER CONFERENCES

OUR PARENT TEACHER CONFERENCES WILL BE HELD THE MONDAY, TUESDAY & WEDNESDAY AFTER SPRING BREAK, APRIL 12, 13 & 14

On Monday & Tuesday, Teachers will check in with students via Zoom each day, take attendance, provide asynchronous work, and then log off to start Parent Teacher Conferences Appointments.

On Wednesday, regular Zoom schedule will take place with virtual instruction from 8-10:30 AM. Conference appointments available after 10:30 AM.

Monday & Tuesday

APRIL 12

Students sign in to zoom at 8 AM, followed by zoom Parent Teacher Conferences

APRIL 13

Students sign in to zoom at 8 AM, followed by zoom Parent Teacher Conferences

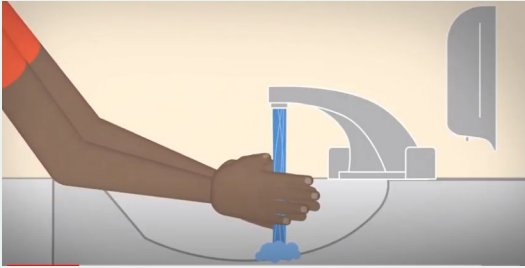
Wednesday

APRIL 14

Regular Wednesday Zoom Schedule, 8-10:30 Conference appointments available after 10:30 AM

VIDEOS

WASHING HANDS



WEARING FACE COVERING



STAYING HOME WHEN SICK



VIDEOS FOR STAFF AND FAMILIES

Transportation: <https://youtu.be/qHHqcr2dprk>

Food Services: <https://youtu.be/WTsYeEbVDN0>

Maintenance & Operations: <https://youtu.be/i95B9hBdCtc>

Health Services:

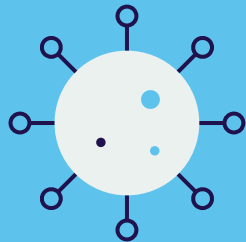
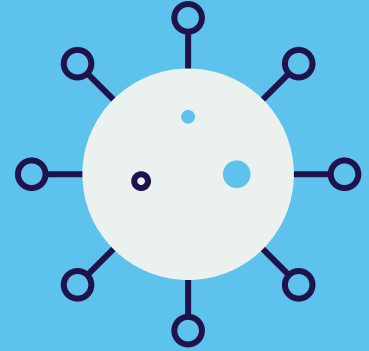
https://docs.google.com/presentation/d/1PVshGtKBppT04nPP-fHRKU8U-cC_Tf6_bAJuDBhXvjw0/edit?usp=sharing



THANKS!

Do you have any questions?

Contact Hapgood at
805.742.2200



CREDITS: This presentation template was created by Slidesgo, including icons by Flaticon, and infographics & images by Freepik

Please keep this slide for attribution