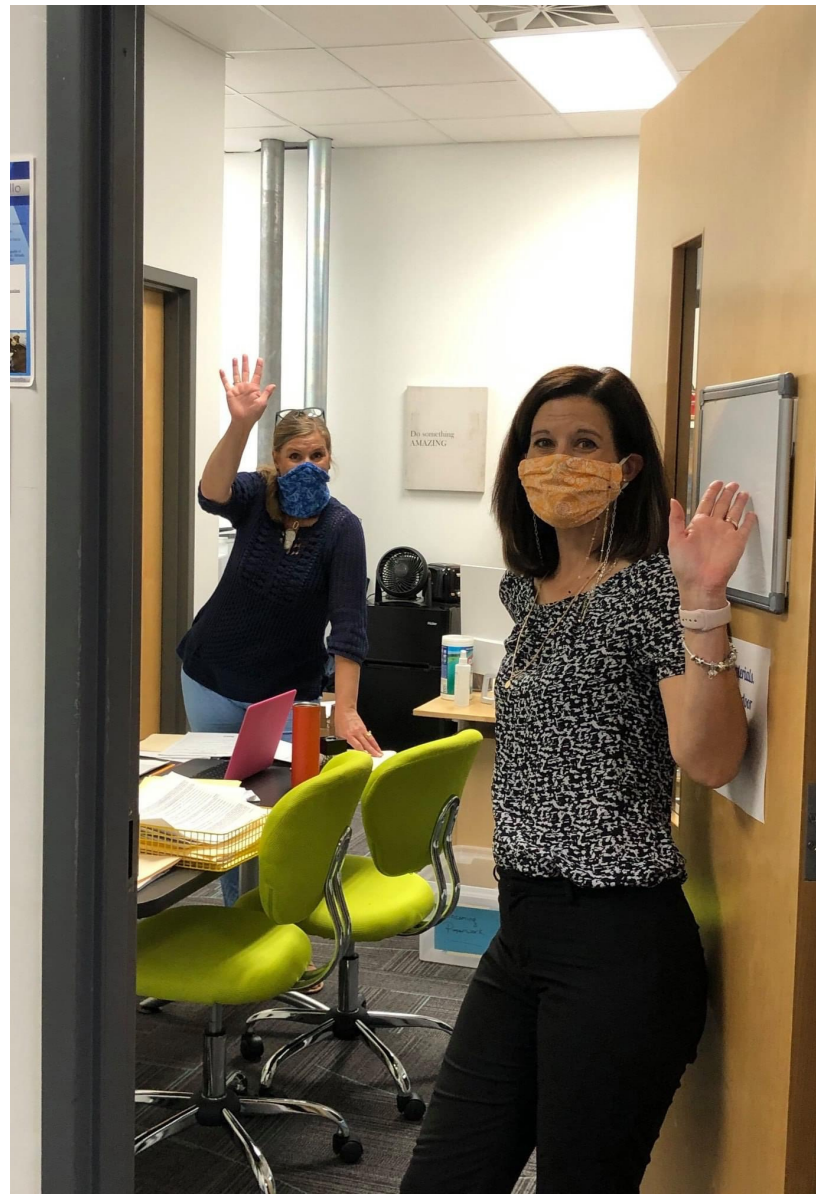
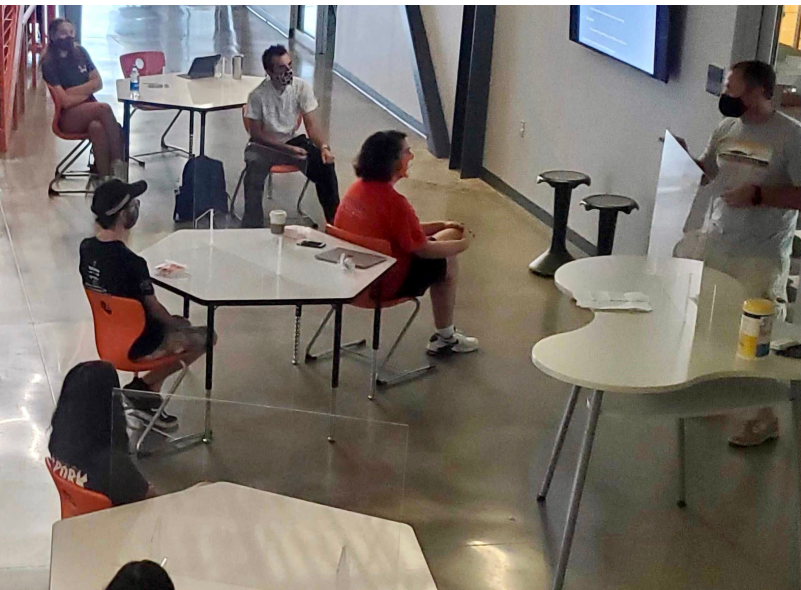




# MODIFIED PLAN B UPPER SCHOOL

## SCHOOL REOPENING PLAN US FREQUENTLY ASKED QUESTIONS

WEDNESDAY, JANUARY 26, 2021





# Modified Plan B: Hybrid Learning

.....



Under Plan B, we will be operating at a limited capacity - 50%. Safety Protocols will be in place and we will run a hybrid learning model that would include both face-to-face instruction and remote learning each week.

# Upper School

## Frequently Asked Questions

---

### How was the decision made to transition from Plan C remote learning to Modified Plan B hybrid learning?

Pine Lake Preparatory and the Board of Directors have been closely monitoring research, data and trends associated with COVID-19. In addition we have also leaned on consultation from local and state health departments, collaboration with other schools/districts, and consultation with health experts as we navigate the pandemic.

- As we expected, we have seen both New Daily Cases and Percent Positive in Iredell and Mecklenburg start to level off and begin a slight downward trend following the holiday season. We are experiencing similar trends with our internal school data.
- We have successfully opened K-8 with effective Health and Safety Protocols to limit the potential spread of COVID-19.
- We recognize the immense academic and developmental value of in-school instruction and also recognize the potential implications to emotional wellness in a prolonged Plan C.
- Pine Lake Preparatory has developed a strong and effective Modified Plan B learning model that prioritizes health and safety procedures proven to minimize the spread of COVID-19.

### What will the Upper School *weekly* schedule look like under a Modified Plan B?

The Modified Plan B at the Upper School is a hybrid in-person/remote experience for our students. Under the Modified Plan B, all students would get on campus one day per week (Monday: Group 1 or Friday: Group 2) while continuing to receive real time remote instruction Tuesday – Thursday. This schedule ultimately increases instructional time each week, and provides a face to face on campus experience while also avoiding the three days of self-paced asynchronous instruction that existed in the original US Plan B. We believe that the modified Plan B will help us increase academic value, engagement and emotional wellness.

MONDAY	TUESDAY	WEDNESDAY	THURSDAY	FRIDAY
Group 1: On Campus Group 2: Off Campus	All Students Remote Periods: 1st - 4th	All Students Remote Periods: 5th - 7th	All Students Remote Periods: 1st - 7th	Group 1: Off Campus Group 2: On Campus

### What will the Upper School *daily* schedule look like under a Plan B?

Students will have seven (55 minute) classes per day.

The daily bell schedule(s) can be found in **Appendix A**.

## **Will students and staff be required to wear masks while on campus under a Plan B?**

Yes, under all three Plans (Plan A, B and C) each of the Pine Lake Preparatory Health and Safety Protocols will be required so that we may promote a safe and healthy campus for the 2020-2021 school year.

All students and staff (K-12) are required to wear a cloth face covering that covers their nose and mouth. Students and staff may remove the cloth face covering during lunchtime. Please note that face shields are not a substitute for the cloth face coverings; however, they may be worn in addition to the face covering. The expectation is that students will have their mask on prior to exiting their vehicle upon arrival on campus and should remain on until they are back in their vehicle at the end of the day.

The cloth face covering is an extension of the school uniform. They can be any color or print, but may not contain words or inappropriate symbols. All cloth face coverings should fit snugly against the face and cover the nose and mouth with no gaps. Reusable cloth face coverings should be laundered after being worn to school and checked frequently as they may become tattered, weakened or loosened over time. Neck gaiters must fit snugly around the nose, covering the mouth and chin. It is also important that neck gaiters have at least two layers of fabric/cloth or are folded over to create two or three layers. We sincerely appreciate your support in helping keep our students, teachers and staff safe.

Pine Lake Preparatory will provide each child with five (5) cloth face coverings that were provided by the state of North Carolina. You are welcome to use the cloth face coverings provided, or you may choose to provide your own. We encourage all families to choose whatever mask is most comfortable for their student to wear for the duration of the school day.

We encourage students to pack two (2) cloth face coverings each day so that they may switch to a clean cloth face covering after lunch.

We can not overstate the necessity of effective masking in an effort to keep our students and staff safe each day. Please help communicate this to your children at home.

## **Can my child switch from one Group to another?**

Unfortunately, no. Currently, switching groups is not possible, recognizing the restrictions necessary to ensure effective distancing in the classroom.

## **What will Monday and Friday look like for my student(s) when they are not on campus?**

Students will be expected to check in on CANVAS by 10:00 am - this check-in is important as it will count towards their attendance for the day. Students are expected to use this time to catch up on classes, study, work through college guidance items and complete potentially assigned Advanced Placement, Math and/or PLTW Capstone coursework.

Counselors will be available to consult with students remotely for academic and/or social-emotional needs.

## **Should my student bring his/her MacBook to school under Plan B, or should it be left at home?**

Yes, students should bring their school issued MacBook Air to school each day on campus. Please ensure the computer has been charged.



## **What will the daily attestation look like for Upper School Students?**

The daily attestation is a necessary safety protocol implemented as an additional layer of safety for our students and staff on campus. In addition to having their temperature taken, students must attest that they are not currently required to isolate because of a positive COVID diagnosis, are not exhibiting any of the signs or symptoms, and have not been told to quarantine as a result of a close contact or exposure.

Please understand that your student(s) should remain at home if anyone in the household is experiencing symptoms – fever, chills, shortness of breath or difficulty breathing, new cough, new congestion or runny nose and/or new loss of taste and smell. Again, the attestation reads, “if you, or anyone in your household, is experiencing any of the following symptoms...”.

While students will self attest, we ask that you support our efforts by checking in with your children at home regarding their health and the presence of any potential symptoms. The health and safety of our campus is our collective responsibility.

## **What will lunch look like for Upper School Students under a Modified Plan B?**

Hot lunch options be available to order through the Mama's Pizza portal ([Click Here](#)), under a Modified Plan B. All ordered lunches will be delivered to your child by a staff member or volunteer utilizing safety protocols. Lunches will be eaten within the 4th period classroom or in a designated space provided by that teacher. In addition to the classrooms, Pine Lake has created several additional outdoor areas where classes will be invited to eat on a rotating basis. Lunch processes will be re-evaluated monthly.

We anticipate opening the Hot Lunch portal for ordering mid February for the month of March.

## **What should my Upper School student bring to school each day?**

Outside of necessary school supplies, lunch and their Macbook, other personal belongings should be kept at home. With that being said, we do encourage students to carry their own water bottle daily. While we will have water bottle fillers available in each building, we have disconnected our traditional water fountains.

## **Will my child need to wear their school uniform to each day they are on campus?**

Yes, students should come to school dressed in their PLP school uniform. Students are also invited to wear a PLP spirit shirt with a uniform bottom on their designated day (Monday or Friday).

## **Will there be any changes to the master calendar under a Modified Plan B?**

A Modified Plan B Calendar has been created to communicate the schedule for the year. In the event that we are operating at a Modified Plan B at any point during the year, this calendar will be in effect.

See **Appendix B** for the Modified Plan B Calendar.

## **Will PLP buses be on the road under a Plan B? Are seats still available on any of the routes?**

Yes, PLP buses are in operation in Plan B, with appropriate spacing. All afternoon shuttles are full, however there are spots open in the mornings, with pickup locations in Huntersville, Cornelius, and Mooresville. Please contact [Joe.Webb@pinelakeprep.org](mailto:Joe.Webb@pinelakeprep.org) to request to be added to a morning route. If you would like to join a waitlist for afternoon shuttles, please [Click Here](#).

## **Will Pine Lake Preparatory continue to participate in competitive athletics at the Upper School this year?**

Yes, as a member of the North Carolina High School Athletic Association we plan to continue to offer sports in accordance with their Amended 2020-2021 Sports Calendar and modified guidelines. Additional information can be found at [PineLakePrep.org](http://PineLakePrep.org)

## **What will arrival look like each morning under a Plan B?**

Upon arrival on campus, all students should report to the front doors of the Upper School, Fine Arts or STEM Building depending on where their first period class is located. Upon arrival at the front door, your child(ren) will be greeted by a Pine Lake Preparatory staff member. At that time, the student will verbally self-attest before having their temperature taken. It is important to recognize that this is the first, and an important layer of health protocols/procedures we have in place to ensure a healthy and clean campus. Please practice/review the attestation questions with your student prior to the first day of school.

See **Appendix C** for the document. After completing the self-attestation all students are expected to report directly to their first period class.

All students must put their cloth face covering on prior to exiting their vehicle in front of the Upper School or in the parking lot.

A flow chart has been included in **Appendix D** to help families better understand the screening protocols.

## **What will dismissal look like each afternoon under a Plan B?**

PikmyKid will be used daily for dismissal. Directions specific to PikMyKid will be released the week of February 1st. We will also detail the application in the Parent Webinar on February 4th at 1:00 pm.

Upper School Families with Lower School siblings may begin arriving on campus at 3:10 pm. Families who are not picking up a LS student (US and MS/US only families) should not arrive prior to 3:25 pm.

All students must be picked up by 3:50 pm.

## **What will my child's classroom look like?**

Classrooms have been redesigned to facilitate appropriate distancing while remaining both welcoming and conducive to instruction. Most rooms will have individual desks to facilitate distancing to the best of our ability, while a few will have classroom tables that will be shared by 2 students equipped with a plexiglass divider.

Within the classroom, we will limit sharing of personal items and school supplies and students will keep personal items separate. Outside of necessary school/instructional supplies, other personal belongings should be kept at home.

## **In addition to cloth face coverings, what other safety protocols will be in place under this Modified Plan B?**

The Pine Lake Preparatory Health and Safety Protocols have been developed to support a safe and healthy campus for the 2020-2021 school year. The ability to open our doors, and keep them open, will rely on a community effort to support and adhere to each guideline. These protocols include, and will be in place during in-person/on-campus instruction under the Modified Plan B:

- The Three W's - Wear, Wash and Wait.
- Social Distancing and Minimizing Potential for Exposure.
- Cloth Face Coverings and Monitoring for Symptoms.
- A Healthy and Clean Campus - routine cleaning and sanitizing throughout the day.

For the complete list and description of Health and Safety Protocols please see the Pine Lake Preparatory Reopening Plan.

## **Is there a way I can track the number of current confirmed positive COVID-19 tests at Pine Lake Preparatory?**

Yes. Pine Lake Preparatory is working hard to protect its approximately 1,800 students and 200 employees from COVID-19, but it's important to recognize that there will be positive cases this school year. While we are not immune to COVID-19, we can help to limit potential exposure/spread through the effective adherence to our Health and Safety Protocols.

Our current dashboard is live and published on the COVID-19 portal of PineLakePrep.org and will be updated every Friday by 5:00 p.m. See **Appendix E** for the template. While it has been inclusive of Lower and Middle School since their return to in-person instruction, we will start to include Upper School data on the Dashboard beginning Friday, February 26th. Pine Lake will also continue to send weekly communication (Sundays) regarding campus case counts. Upper School counts will be included following their return to in-person instruction on Sunday.

## **What additional COVID-19 related communication will be sent to families?**

In addition to the COVID dashboard and weekly (Sunday) communication, the family of any student who is identified as a close contact (6 feet for 15 minutes) will be notified by the school. Please understand that Pine Lake Preparatory will be working closely with the Iredell Health Department anytime there is a suspected, presumptive or confirmed case.

## How can I find out more information?

We will host a parent/guardian webinar on February 4th at 1:00 pm. The target audience for the session is parents, however, students are welcome to participate. Information for students will be implemented into the school day over the next two weeks to ensure a smooth transition. Please recognize that the session will be recorded if you are unable to attend. You are welcome to send questions in advance to be addressed during the webinar.

Please send questions to [Communications@pinelakeprep.org](mailto:Communications@pinelakeprep.org) with the title US Family Webinar.

[Click Here](#) to register for the webinar.

## How will my child know if he/she has a parking pass to park on campus?

Eligible juniors and seniors who have requested a parking space may pick up their parking pass on the following dates:

- Wednesday, February 10, 1pm - 3pm
- Wednesday, February 17, 1pm - 3pm
- During ACT practice days (Juniors Only)

Please sign up in advance using the following link: [Click Here](#).

The parking contract will be emailed the first week of February. In order to pick up your parking pass, you must have the following completed:

- \$60.00 (MyPaymentsPlus) paid in in conjunction with drug test
- Signed Student Parking Contract (by student and parent/guardian)
- Photocopy of your driver's license and car registration
- You must have completed/passed mandatory drug test
  - If you have not completed the drug testing please email [susan.kesterson@pinelakeprep.org](mailto:susan.kesterson@pinelakeprep.org) to schedule a drug test

### Eligibility Requirements:

- Juniors and seniors must have a valid driver's license.
- Students must have at least 40 cumulative service hours (unless they are a new student to PLP).
- Students must have completed the parking survey that was sent in January.



# Appendix A: Daily Bell Schedules

The following daily bell schedules will be in place during a Modified Plan B.

---



## On Campus Day: Monday/Friday

**1st block:** 8:00 am - 8:55 am

**2nd block:** 9:00 am - 9:55 am

**3rd block:** 10:00 am - 10:55 am

**4th block:** 11:00 am - 12:20 am

**5th block:** 12:25 pm - 1:20 pm

**6th block:** 1:25 pm - 2:20 pm

**7th block:** 2:25 pm - 3:20 pm

*Please note: Lunch will occur during 4th block.*

# Appendix A (cont.): Daily Bell Schedules

The following daily bell schedules will be in place during a Modified Plan B.

---



## 4-Period Remote Day

---

**1st/5th block:** 8:00 am - 9:00 am

**2nd/6th block:** 9:10 am - 10:10 am

**3rd/7th block:** 10:20 am - 11:20 am

**4th/Support block:** 11:30 am - 12:30 pm

## 7-Period Remote Day

---

**1st block:** 8:00 am - 8:30 am

**2nd block:** 8:40 am - 9:10 am

**3rd block:** 9:20 am - 9:50 am

**4th block:** 10:00 am - 10:30 am

**5th block:** 10:40 am - 11:10 am

**6th block:** 11:20 am - 11:50 am

**7th block:** 12:00 am - 12:30 am

# Appendix B: Modified Plan B Calendar

## Pine Lake Preparatory PLAN B UPPER SCHOOL Calendar

### 2020-2021 School Calendar, When Plan B is In Effect

July 2020						
Su	M	Tu	W	Th	F	Sa
			1	2	3	4
5	6	7	8	9	10	11
12	13	14	15	16	17	18
19	20	21	22	23	24	25
26	27	28	29	30	31	

August 2020						
Su	M	Tu	W	Th	F	Sa
						1
2	3	4	5	6	7	8
9	10	11	12	13	14	15
16	17	18	19	20	21	22
23	24	25	26	27	28	29
30	31					

September 2020						
Su	M	Tu	W	Th	F	Sa
		1	2	3	4	5
6	7	8	9	10	11	12
13	14	15	16	17	18	19
20	21	22	23	24	25	26
27	28	29	30			

October 2020						
Su	M	Tu	W	Th	F	Sa
				1	2	3
4	5	6	7	8	△	10
11	12	13	14	15	16	17
18	19	20	21	22	23	24
25	26	27	28	29	30	31

November 2020						
Su	M	Tu	W	Th	F	Sa
1	2	3	4	5	6	7
8	9	10	11	12	13	14
15	16	17	18	19	20	21
22	23	24	25	26	27	28
29	30					

December 2020						
Su	M	Tu	W	Th	F	Sa
		1	2	3	4	5
6	7	8	9	10	11	12
13	14	15	16	17	△	19
20	21	22	23	24	25	26
27	28	29	30	31		

January 2021						
Su	M	Tu	W	Th	F	Sa
					1	2
3	4	5	6	7	8	9
10	11	12	13	14	15	16
17	18	19	20	21	22	23
24	25	26	27	28	29	30
31						

February 2021						
Su	M	Tu	W	Th	F	Sa
	1	2	3	4	5	6
7	8	9	10	11	12	13
14	15	16	17	18	19	20
21	22	23	24	25	26	27
28						

March 2021						
Su	M	Tu	W	Th	F	Sa
	1	2	3	4	5	6
7	8	9	10	11	12	13
14	15	16	17	18	19	20
21	22	23	24	25	26	27
28	29	30	31			

April 2021						
Su	M	Tu	W	Th	F	Sa
				1	2	3
4	5	6	7	8	9	10
11	12	13	14	15	16	17
18	19	20	21	22	23	24
25	26	27	28	29	30	

May 2021						
Su	M	Tu	W	Th	F	Sa
						1
2	3	4	5	6	7	8
9	10	11	12	13	14	15
16	17	18	19	20	21	22
23	24	25	26	27	28	29
30	31					

June 2021						
Su	M	Tu	W	Th	F	Sa
		1	2	3	4	5
6	7	8	9	10	11	12
13	14	15	16	17	18	19
20	21	22	23	24	25	26
27	28	29	30			

GROUP 1 In Person; Group 2 Off Campus  
GROUP 2 In Person; Group 1 Off Campus

Periods 1-4  
Periods 5-7; Teacher hours

Classes 1-7  
Quarter End

Feb. 23	ACT for Juniors: NO SCHOOL Grades 9, 10, 12
Feb. 24	Classes 1-4
Feb. 25	Classes 5-7
March 5	End of Q3
March 8	Staff Planning; No School for Students
March 10	Classes 1-4
March 11	Classes 5-7
April 5-9	Spring Break
May 28	Last Day of School; early release
May 29	Class of 2021 Graduation



# Appendix C: Symptom Attestation Document

---



**Have you had close contact (within 6 feet for at least 15 minutes) in the last 14 days with someone diagnosed with COVID-19, or has any health department or health care provider been in contact with you and advised you to quarantine?**

☐ Yes - The person should not be at school. The person can return 14 days after the last time they had close contact with someone with COVID-19, or as listed below.

☐ No - The person can be at school if they are not experiencing symptoms.

**In the past 14 days, have you, or anyone in your household had any of these symptoms?**

- ☐ Fever
- ☐ Chills
- ☐ Shortness of breath or difficulty breathing
- ☐ New cough
- ☐ New congestion and/or runny nose
- ☐ New loss of taste or smell
- ☐ Sore Throat

☐ Yes - If a person has any of these symptoms, they should go home, stay away from other people, and call their health care provider

☐ No - The person can be at school if they are not experiencing symptoms

**In the past 14 days, have you been diagnosed with COVID-19?**

☐ Yes - If a person is diagnosed with COVID-19 based on a test, their symptoms, or does not get a COVID-19 test but has had symptoms, they should not be at school and should stay at home.

☐ No - The person can be at school if they are not experiencing symptoms

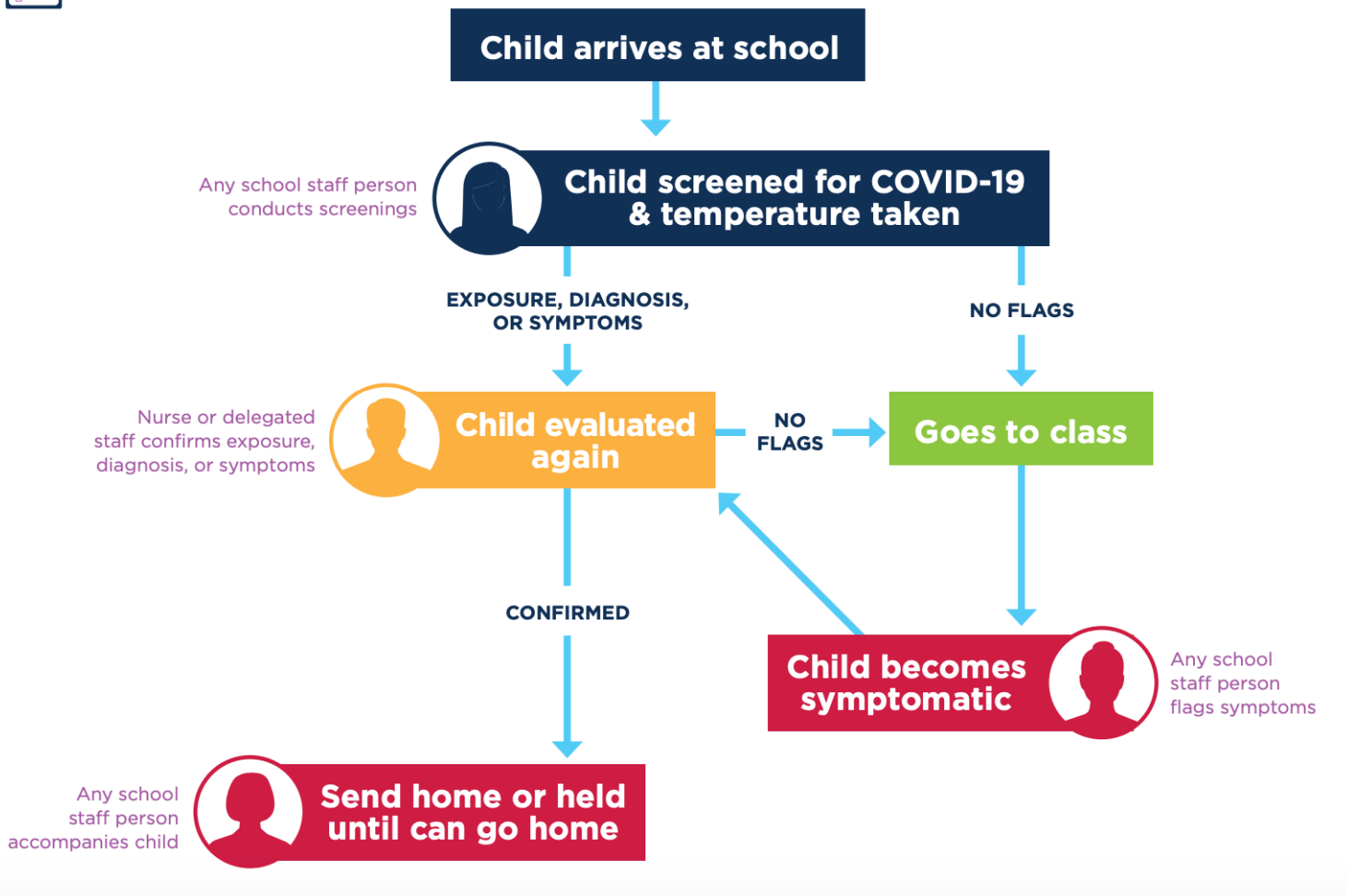
# Appendix D: Daily Screening

Before students enter the building, Upper School students will be screened for symptoms as part of the attestation. Students will verbally self-attest each morning.

Pine Lake Preparatory will follow the North Carolina Health and Human Services guidelines for screening students as outlined in the flow chart below:

## Daily Screening for COVID-19

### Staff Roles Flow Chart



### Daily Temperature Checks

In addition to the symptom attestation, Each student will have their temperature taken prior to entering the building. Anyone with a temperature above 100.3 degrees will not be permitted to enter the building. A second, follow up temperature will be taken by a school nurse or designated staff member to confirm a temperature above 100.3 degrees.

# Appendix E: COVID-19 Dashboard

Pine Lake Preparatory is working hard to protect its approximately 1,800 students and 200 employees from COVID-19, but it's important to recognize that there will likely be positive cases this school year. While we are not immune to COVID-19, we can help to limit potential exposure/spread through the effective adherence to our Health and Safety Protocols.

Pine Lake Preparatory and the Iredell County Health Department will be working together to implement contact tracing when members of our school community test positive. We are committed to providing timely and transparent information to individuals who have potentially been exposed to COVID-19. At the same time, we must comply with state and federal mandates – including the Family Educational Rights and Privacy Act (FERPA) and the Health Insurance Portability and Accountability Act of 1996 (HIPAA) – to protect the privacy of our students and employees.

With that in mind, we will use the following COVID-19 Dashboard to communicate positive tests in the school community. This information will be available on the COVID-19 portal of PineLakePrep.org.

Pine Lake Preparatory COVID-19 Dashboard

Building	Total Number of Individuals in the Building	Current Number of COVID-19 Positive	Current Percent of COVID-19 Positive
Lower School	X students/staff	0	0%
Middle School	X students/staff	0	0%
Upper School	X students/staff	0	0%

Last Updated: Friday, October 2nd

