



# Welcome

**2022**

**Capital Bond Task Force  
Meeting # 2!**

## OBJECTIVES

- Where we are in the process of bond planning
- Three pronged approach to building assessments
- General understanding of needs in the district by building
- Analysis of the data in breakout groups

01

02

03

04

05

06

Recap of Last  
Meeting

Bond Planning  
Introduction

Building  
Condition  
Assessment &  
Facility  
Rankings

Enrollment &  
Design  
Capacity  
Assessment

Functional  
Performance  
Assessment &  
Facility  
Rankings

Synthesis

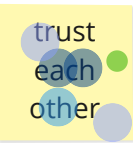
# Group "Norms"



treat each  
other with  
respect



avoid  
hidden  
agendas




trust  
each  
other

ask for  
help

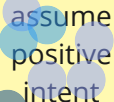
no  
defenses  
needed



foster  
positive  
change



have  
compassion



assume  
positive  
intent

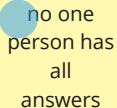


listen  
to learn

maintain  
confidentiality  
for students,  
teachers, staff  
in discussions




value  
opinions  
of others



no one  
person has  
all  
answers



be open  
to ideas



kind  
language



ask if you  
don't  
understand

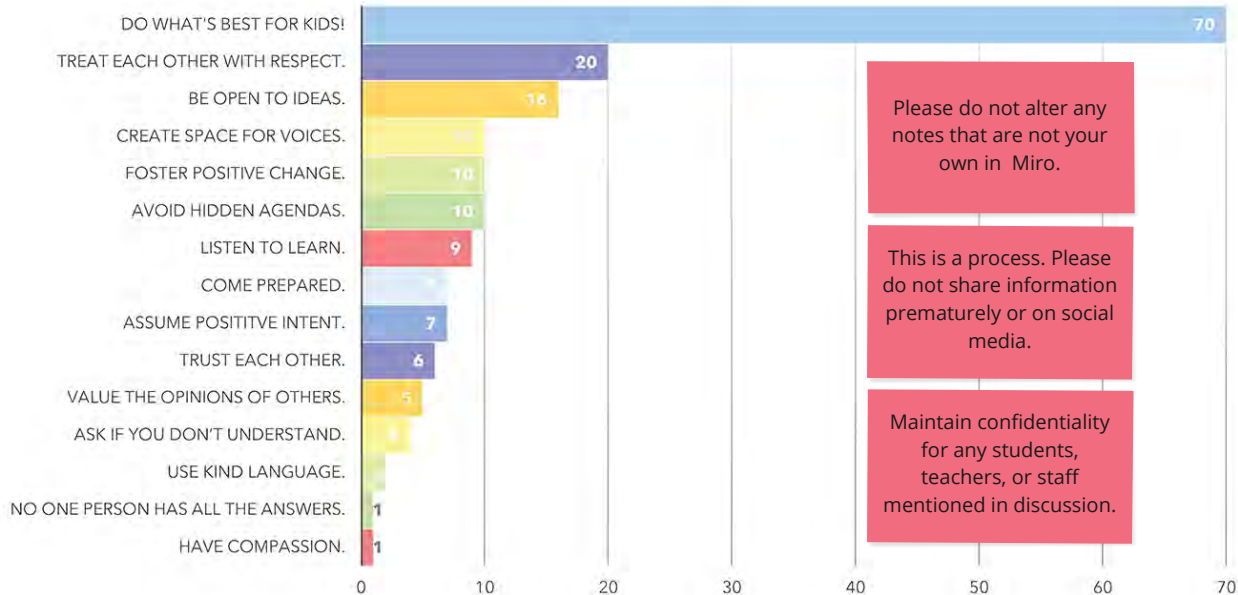


create  
space for  
voices



come  
prepared

# Group "Norms"



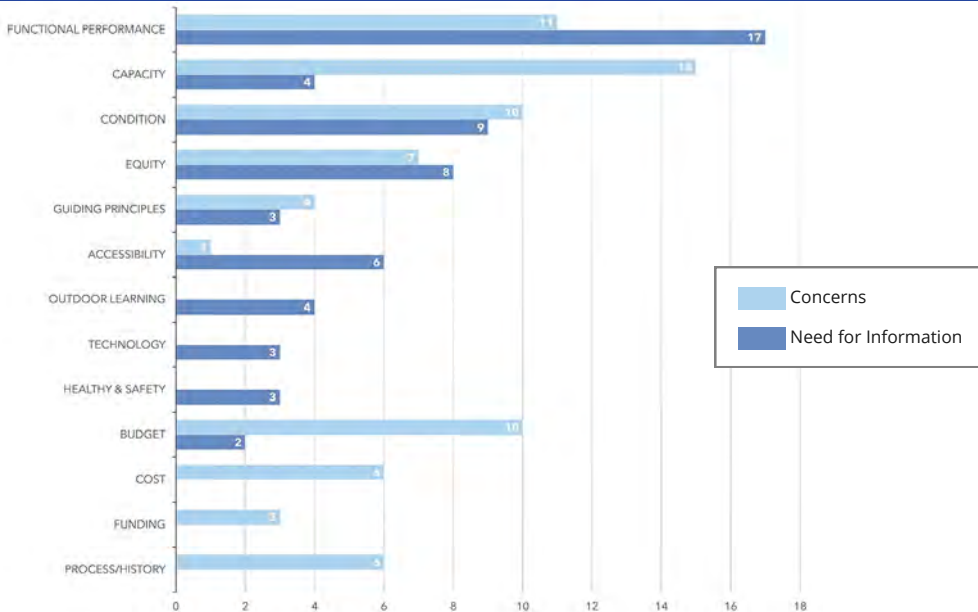
What have you learned today?

What was surprising?

What user issues should NSD focus on with the 2022 bond?

What would you need to know more about in order to make decisions?

# Breakout: Info Needs & Concerns

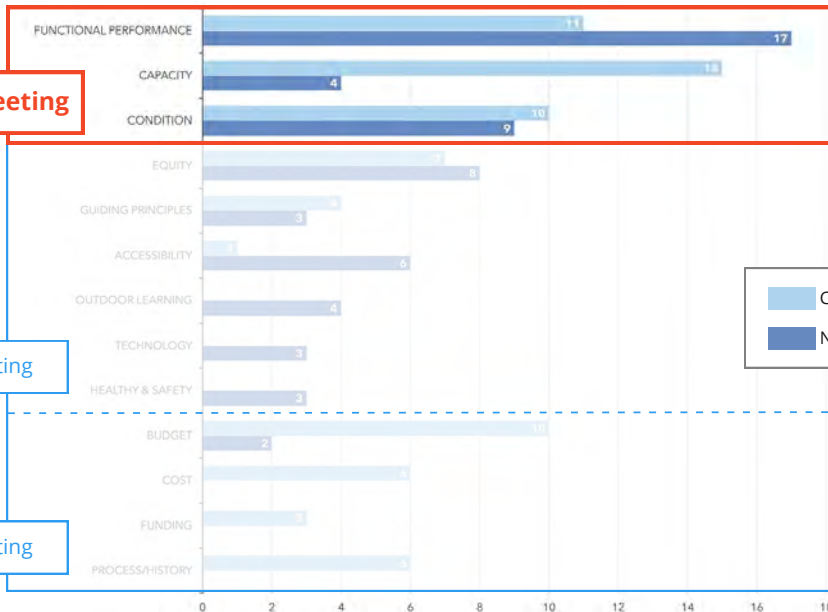


# Breakout: Info Needs & Concerns

Today's Meeting

04 | 05 Meeting

04 | 19 Meeting



Concerns  
Need for Information



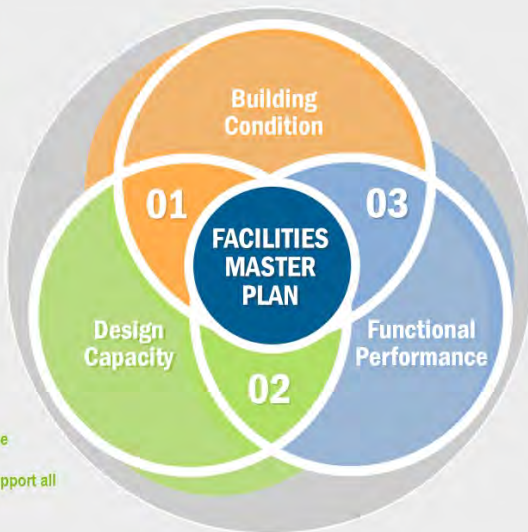


## Facilities Master Plan Components

### DESIGN CAPACITY

Number of students determined to be an ideal occupancy for the number of instructional program support spaces at the onset of programmatic design of each NSD facility. This number varies by grade level and can vary by facility depending on when the school was designed.

- Number of classrooms
- Classroom size
- Associated program support space
- Administrative spaces
- Adequate circulation spaces to support all



### BUILDING CONDITION

Systematic inspection and rating on every NSD building structure, system, and component. Ratings for these purposes are reviewed specifically for systems in which replacement extends the useful life of the facility. They are also focused to identify issues with the greatest impact to the user if the system fails, remaining useful life of the components, and efficiencies of the system.

- Walls, roofs, windows, & floors
- HVAC/mechanical systems
- Major plumbing components
- Life Safety
- Fields & courts

### FUNCTIONAL PERFORMANCE

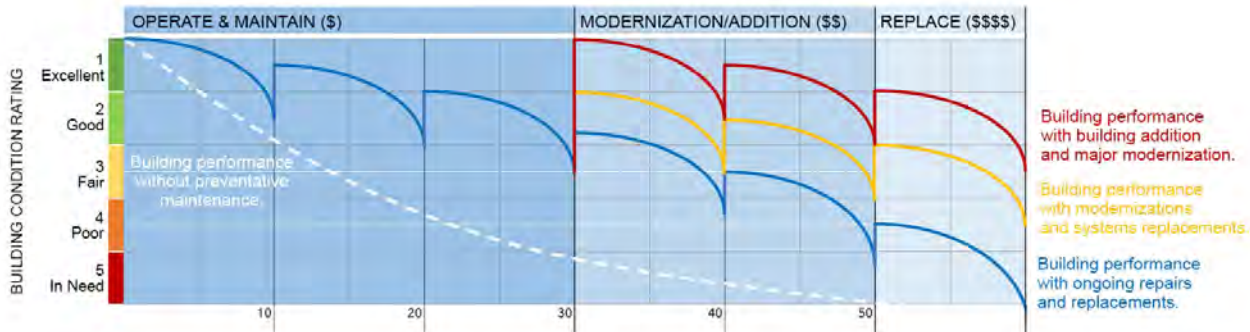
A 36-point systematic inspection and rating on every NSD facility, learning setting and supporting space. Ratings are given based on the flexibility and agility of each facility and the degree to which each serves as an extension of the curriculum by grade level.

- Flexibility of learning settings
- Overall configuration
- Quality of Environment

# Life of a Building

## BUILDING AGE IN YEARS

1-5	10	20	30	40	50
Maintain warranties, filters, motors & pumps. Building and end-user commissioning. Every 5 years: Inspect all exterior painted and sealed transitions for weather tightness	Every 10 years: Interior & exterior painting, technology upgrade & replacement, synthetic turf field replacement	Year 20 - marks the end of the life cycle for many building systems: roofing, gutters, downspouts, window systems, mechanical air handling units, boilers, generators, floor finishes, turf fields, and asphalt paving	Modernization & building additions to meet new Code requirements, capture added enrollment and respond to changing educational delivery approaches	Most building systems have reached or exceeded their life cycle expectation, and approaches to educational delivery have moved away from the model for which the building was originally designed.	Life safety and other comfort and operational needs will likely drive the need for a major renovation or replacement.



# Replace vs. Remodel vs. Rebuild

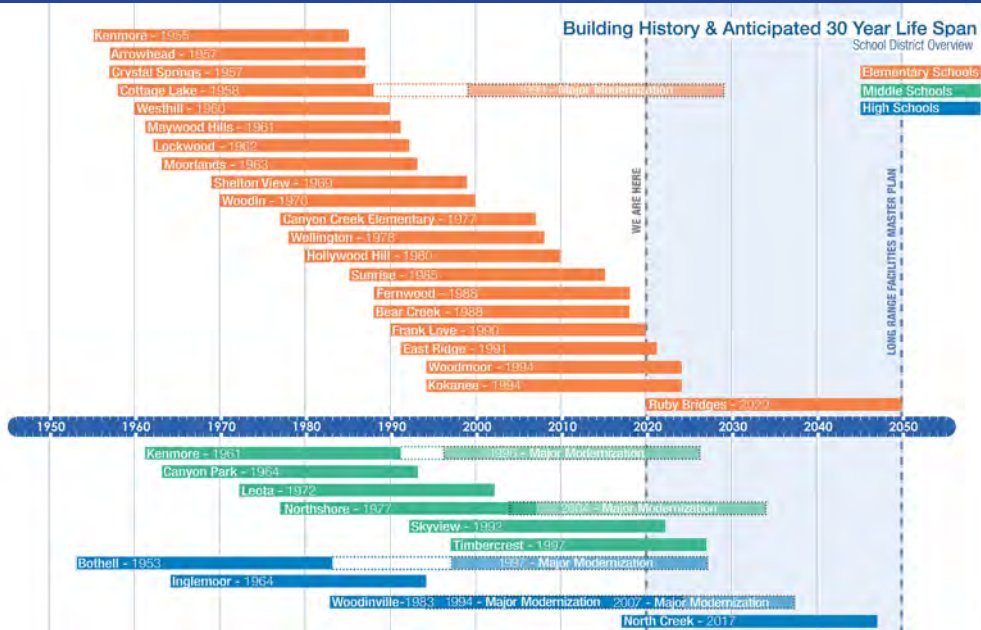


2% - 3% OF TOTAL NEW BUILDING COST

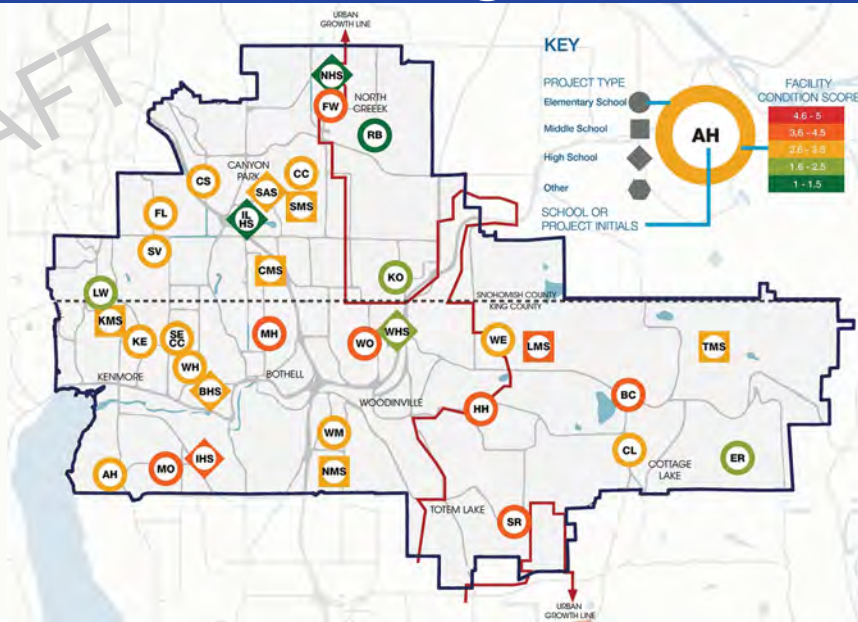


2% - 3% OF TOTAL NEW BUILDING COST

# NSD Facilities Timeline

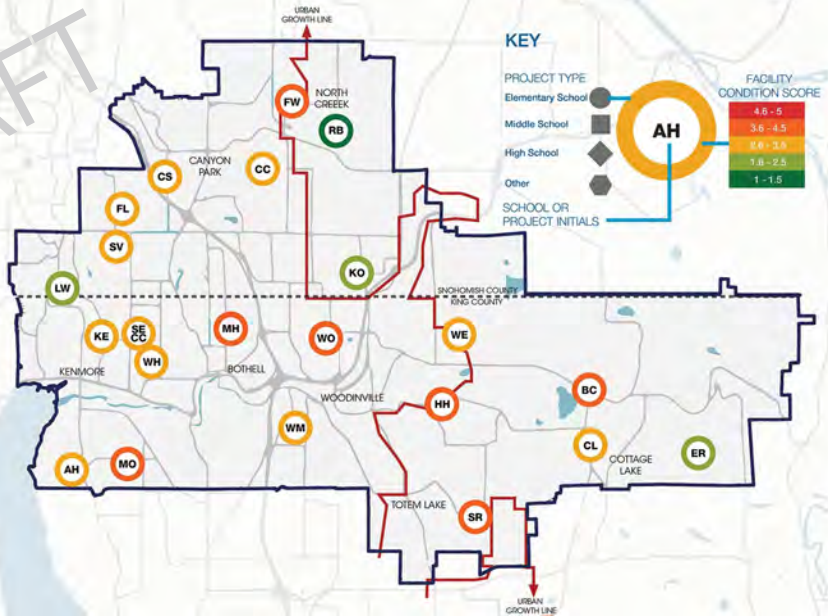


# Building Condition – Overview



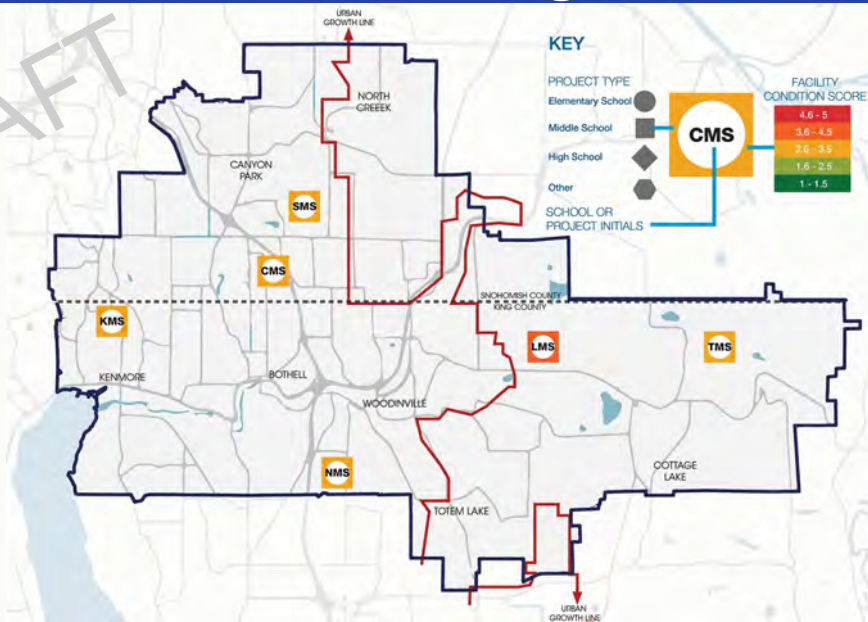
# Building Condition – Elementary

DRAFT

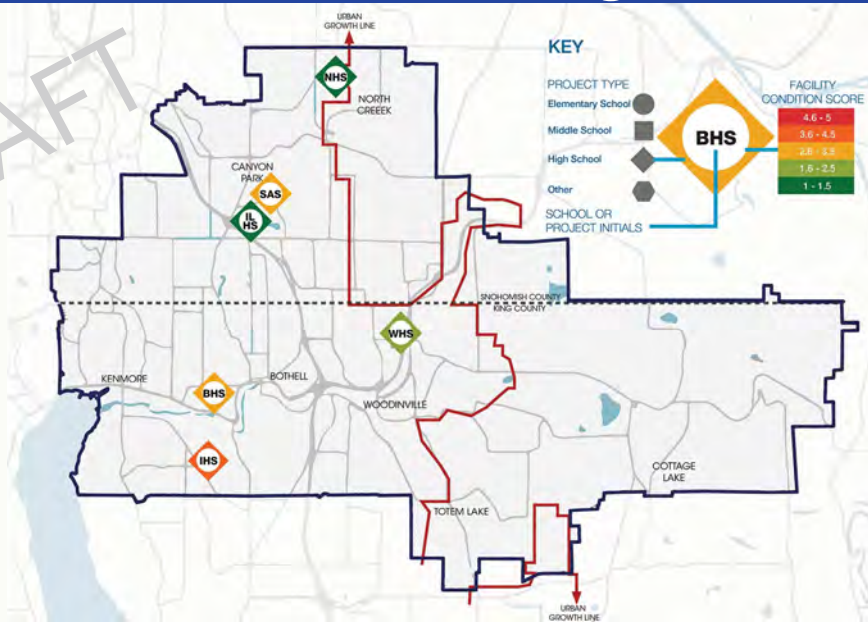




# Building Condition – Middle



# Building Condition – High

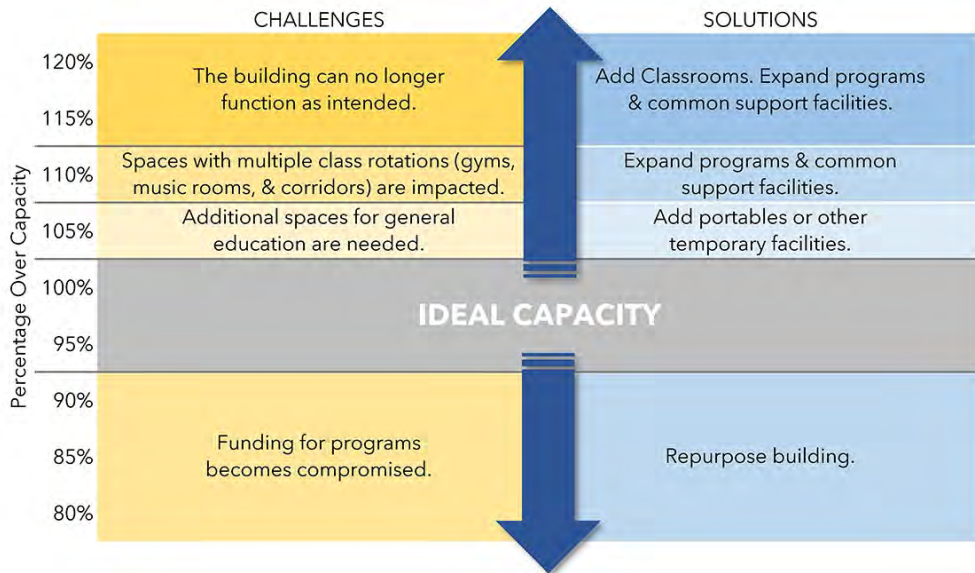




ELEMENTARY SCHOOL   MIDDLE SCHOOL   HIGH SCHOOL   OTHER PROGRAMS

			Color by Grade Level																																	
1988	1985	1980	1964	1963	1961	1961	1960	1978	1977	1964	1997	1958	1957	1955	2001	1969	1957	1953	1994	1999	1999	1977	1977	2010	1990	1970	1992	1962	1983	1994	1991	2017	2020	2021		
2011	1998	2001	2002	2011	2002	2002	2002	1995	2000	2004	2000		2005	1994	2002		1999	2001	2005		2008	2008	2008			2003	2020	2004	2008	2011	2020	2020		2020		
0	2	2	5	7	8	7	12	8	3	1	6	1	0	6	5	2	1	9	6	0	9	1	0	15	3	2	6	0	12	0	0	0	0	0		
Bear Creek ES	Sunrise ES	Hollywood Hill ES	Inglemoor HS	Moorlands ES	Maywood Hills ES	Leota MS	Fernwood ES	Westhill ES	Wellington ES	Northshore MS	Canyon Park MS	Timbercrest MS	Cottage Lake ES	Arrowhead ES	Kenmore ES	Sorenson Early Childcare Center	Shelton View ES	Crystal Springs ES	Bothell HS	Woodmoor ES	Canyon Creek ES	Kenmore MS	Secondary Academy for Success	Frank Love ES	Woodin ES	Skyview MS	Lockwood ES	Woodinville HS	Kokanee ES	East Ridge ES	North Creek HS	Ruby Bridges ES	Innovation Lab HS	Facility		
4.31	4.38	4.21	3.91	3.77	3.76	3.61	3.59	3.53	3.36	3.32	3.25	3.25	3.23	3.21	3.21	3.17	3.14	3.07	3.01	2.74	2.74	2.70	2.66	2.60	2.57	2.54	2.46	2.28	2.19	1.78	1.71	1.00	1.00	Combined Rating Score		

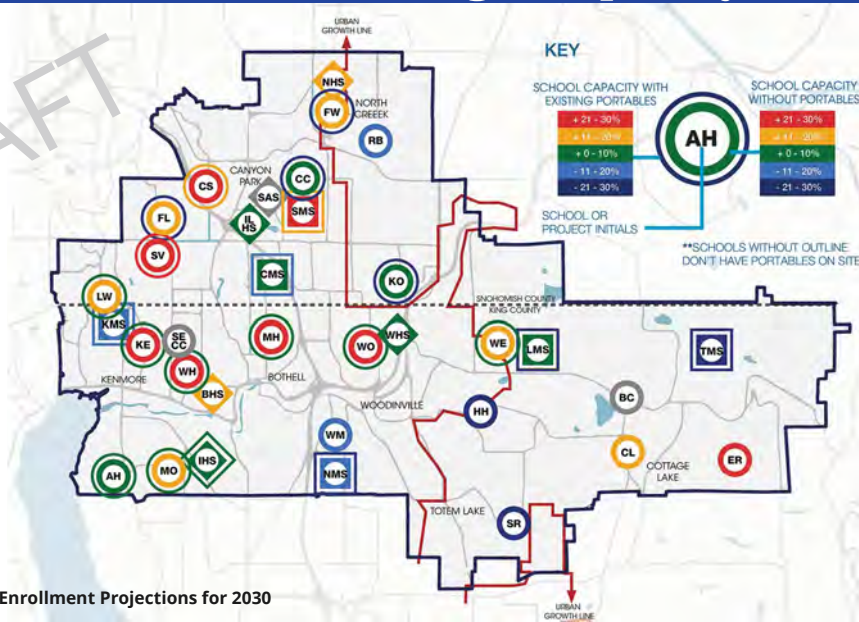
# Design Capacity Solutions



# 2024-25 Enrollment Projections

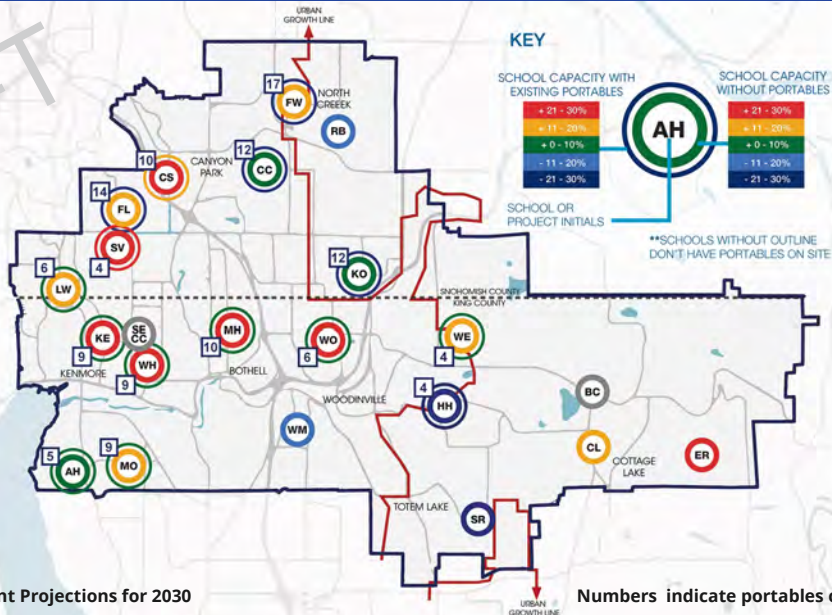
	<b>2024-25 Projected Enrollment</b>	Permanent Capacity	<b>Permanent Capacity Delta</b>	Portable Capacity	Total Capacity	<b>Total Capacity Delta</b>
Elementary Students	<b>10,622</b>	7,735	<b>(2,887)</b>	2,345	10,080	<b>(542)</b>
Middle School Students	<b>5,697</b>	6,276	<b>579</b>	432	6,708	<b>1,011</b>
High School Students	<b>7,535</b>	7,330	<b>(205)</b>	162	7,492	<b>(43)</b>
Total	<b>23,854</b>	21,341	<b>(2,513)</b>	2,939	24,280	<b>426</b>

# Design Capacity – Overview



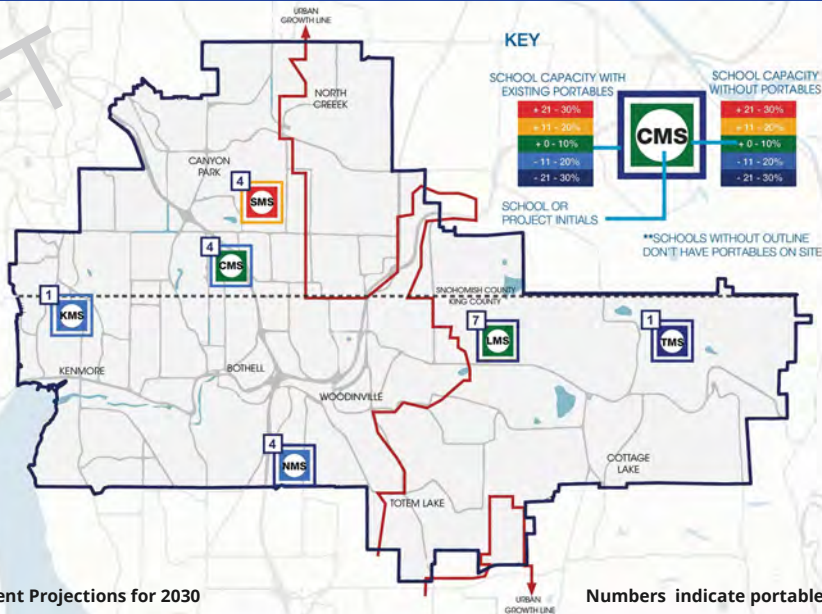
# Design Capacity – Elementary

DRAFT



# Design Capacity – Middle

DRAFT

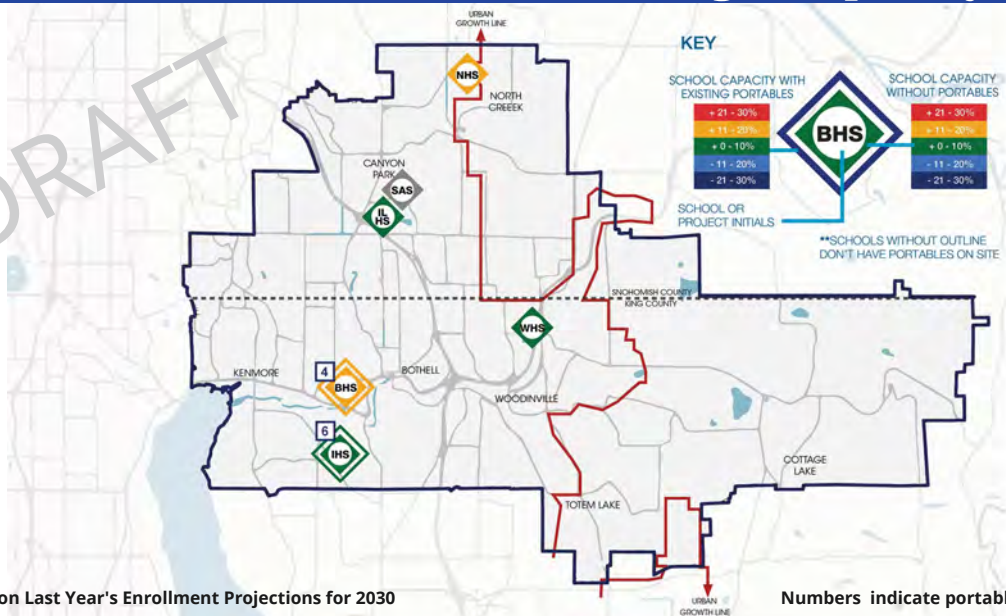


Based on Last Year's Enrollment Projections for 2030

Numbers indicate portables currently on site.

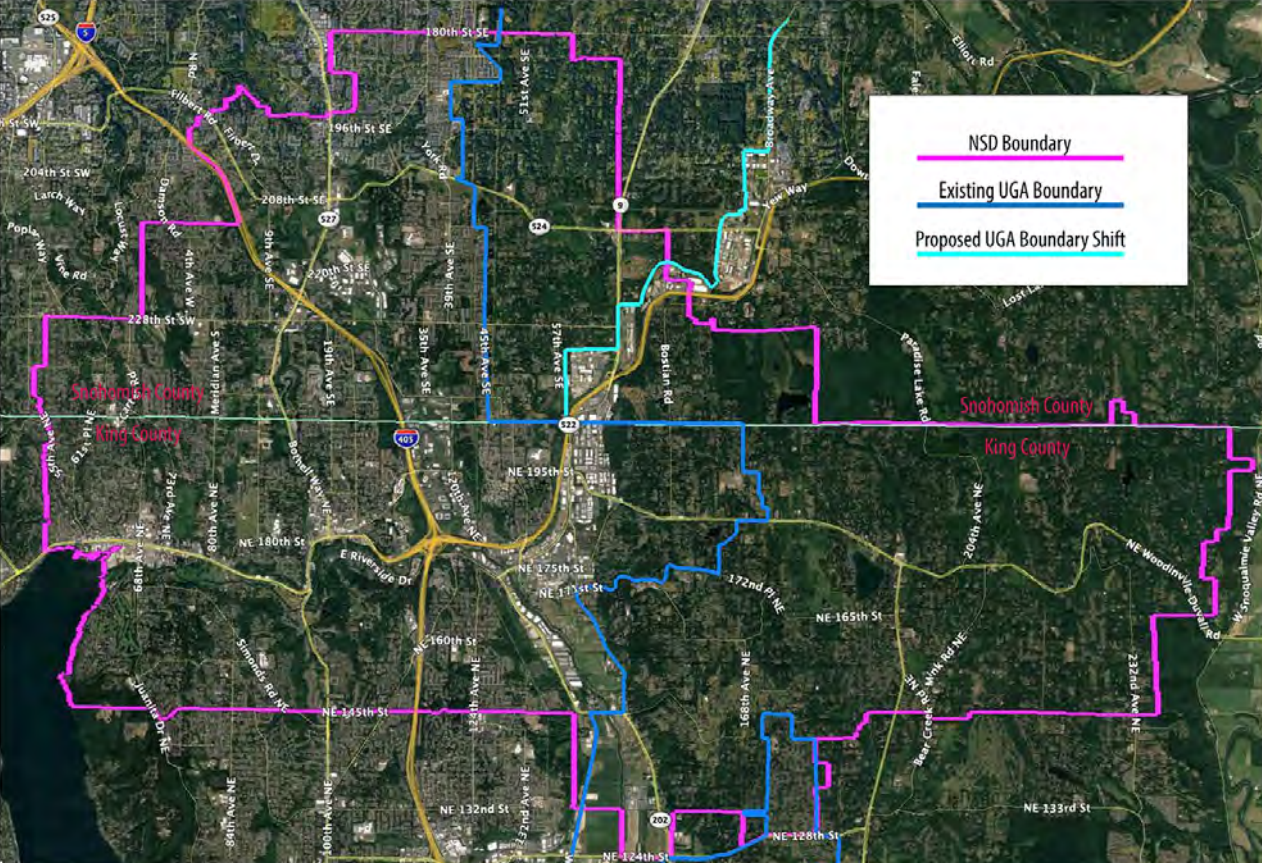


# Design Capacity – High

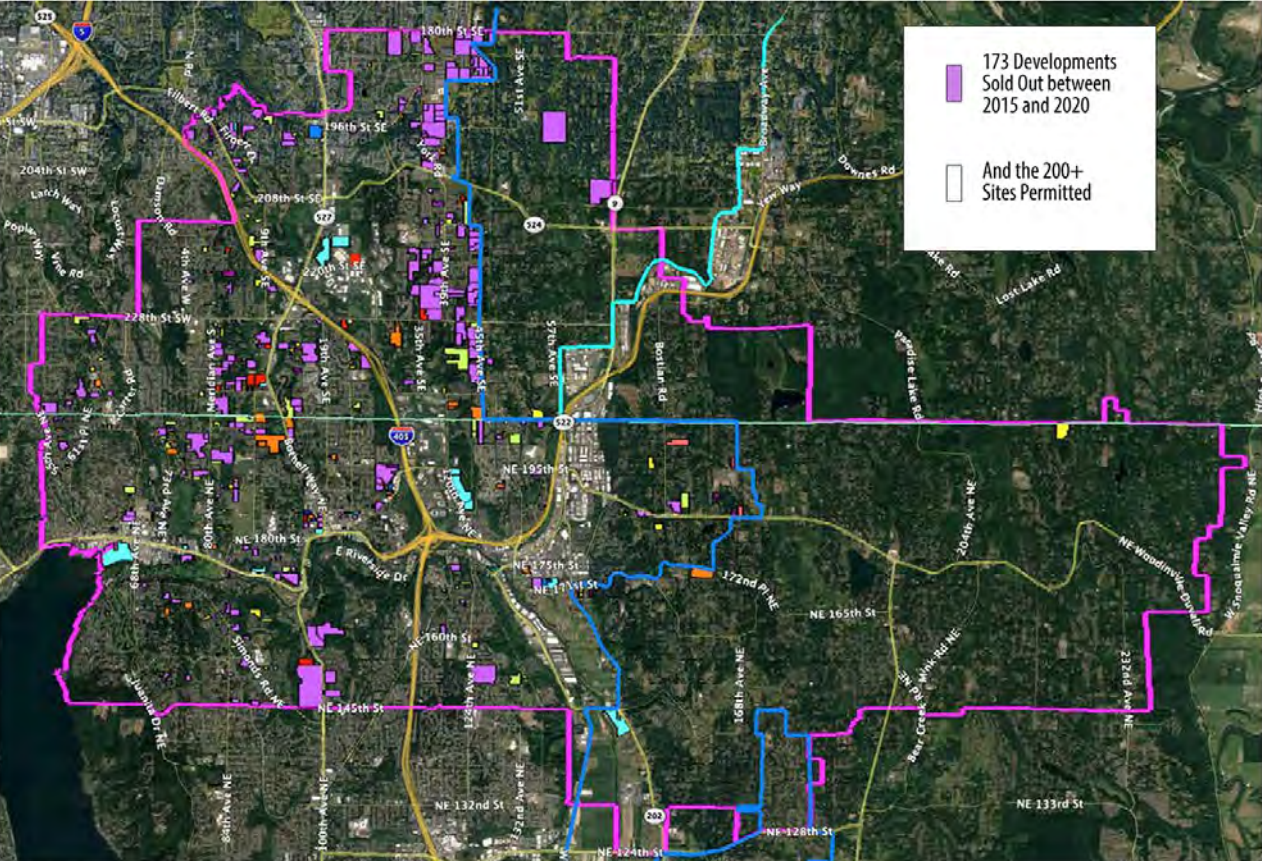


Based on Last Year's Enrollment Projections for 2030

Numbers indicate portables currently on site.







## OTHER PROGRAMS

DRAFT

																																	Color by Grade Level		
1957	1991	1994	1961	1969	1960	1970	1992	1958	1961	1990	1961	1962	1963	1978	1953	2017	1957	1994	1985	1997	1964	1983	1977	1994	2001	2020	1984	1977	1961	1977	1988	2010	2021	Year Built	
2001 2010	2020	2020	2002	1999 2011	1995 2011	2003	2020	2005	2002		2002	2004 2011 2020	2002 2011	2000 2011	2005		1994 2011	2020			1993 1995 1996 2011 2020	1994 2008 2011 2016	1999 2008 2020			2000 2005	1999 2008 2020	2002	2004	2011			Modernizations		
-9	0-	5	8	1	8	3	2	0	17	15	2	6	7	3	6	0	6	12	2	1	5	0	9	0	2	0	6	1	7	1	0	0	0	Number of Portables	
Crystal Springs ES	East Ridge ES	Kenmore ES	Maywood Hills ES	Shelton View ES	Westhill ES	Woodin ES	Skyview MS	Cottage Lake ES	Fernwood ES	Frank Love ES	Hollywood Hill ES	Lockwood ES	Moorlands ES	Wellington ES	Bothell HS	North Creek HS	Arrowhead ES	Kokanee ES	Sunrise ES	Timbercrest MS	Inglemoor HS	Woodinville HS	Canyon Creek ES	Woodmoor ES	Sorenson Early Childcare Center	Ruby Bridges ES	Canyon Park MS	Kenmore MS	Leota MS	Northshore MS	Bear Creek	Secondary Academy for Success	Innovation Lab HS	Facility	
A	B	C	D	E	F	G	H	I	J	K	L	M	N	O	P	Q	R	S	T	U	V	W	X	Y	Z	a	b	c	d	e	f	g	h	i	Continued Rating Scale



# Time Out!

Take a brief Zoom  
Poll and please  
return at: 6:25

How has learning changed since you attended school?





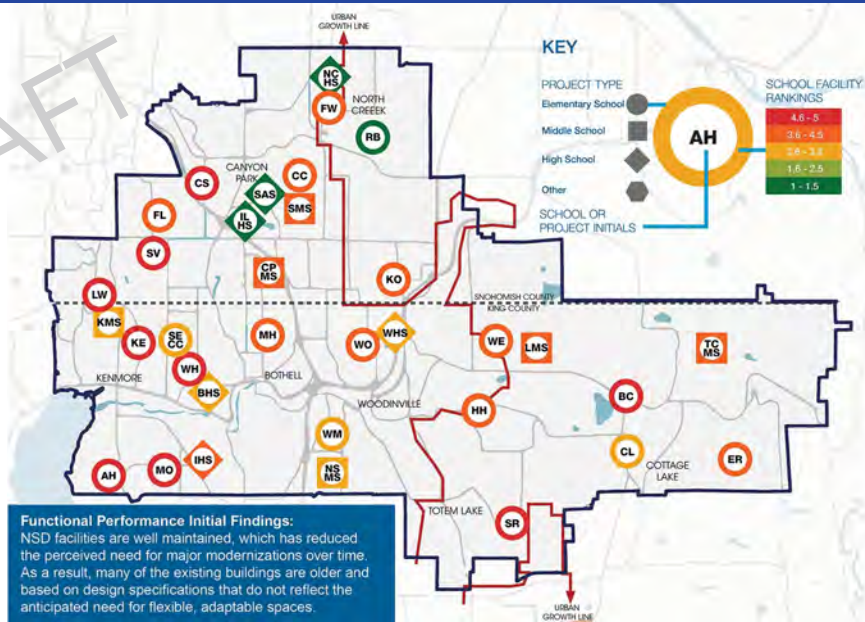
Flexible & Adaptable  
Community Based  
Collaborative





### Quality of Environment

# Functional Performance – Overview

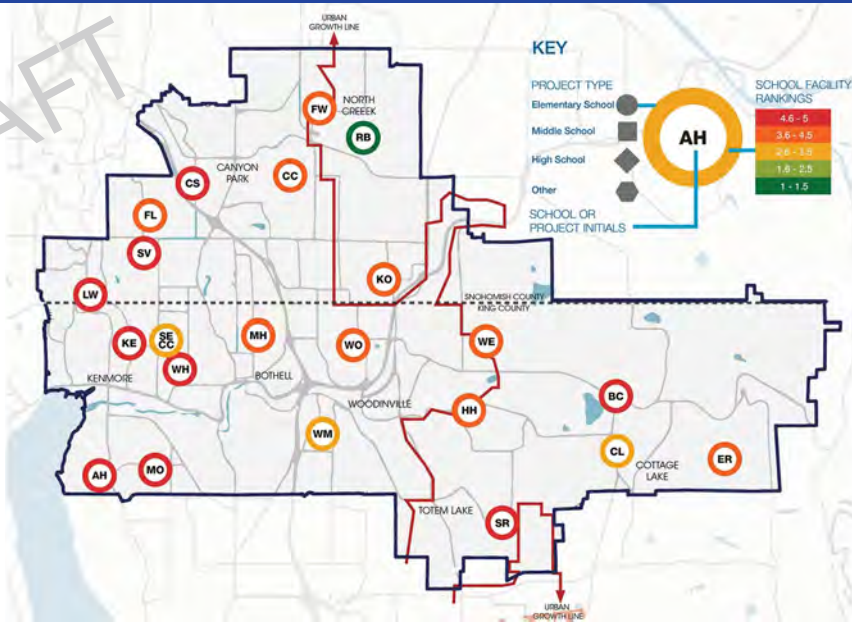


## Functional Performance Initial Findings:

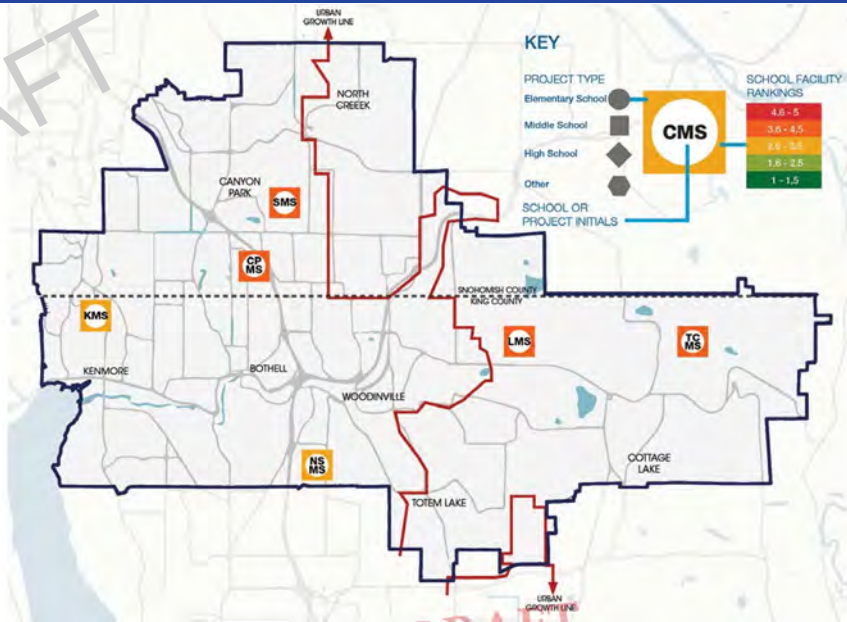
NSD facilities are well maintained, which has reduced the perceived need for major modernizations over time. As a result, many of the existing buildings are older and based on design specifications that do not reflect the anticipated need for flexible, adaptable spaces.



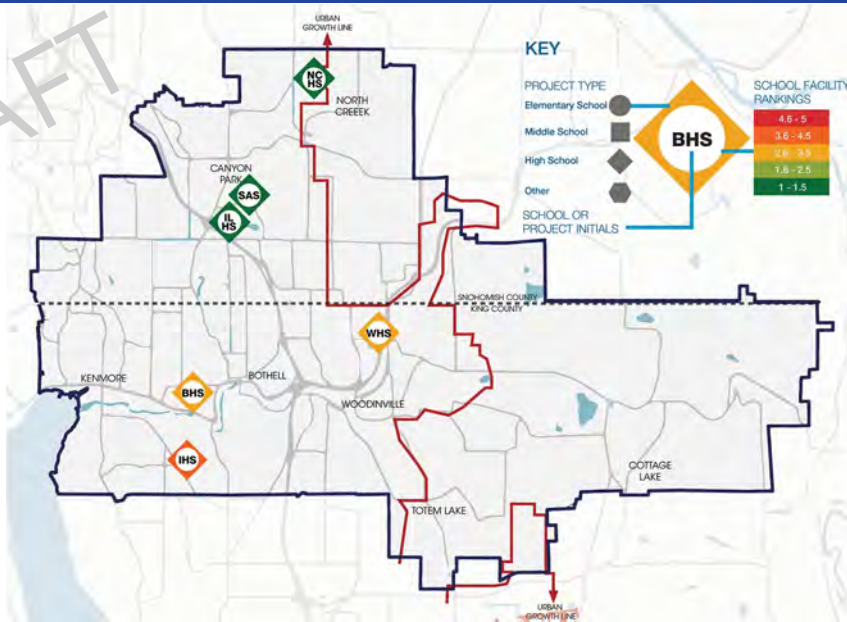
# Functional Performance – Elementary



# Functional Performance – Middle



# Functional Performance – High



## OTHER PROGRAMS

DRAFT

[illegible]

# Varying Priorities

Condition & Capacity Equally Weighted.  
Functional Performance Not Considered.

Elementary Schools										Middle Schools										High Schools										Other Programs									
Maywood Hills ES	Westhill ES	Hollywood Hill ES	Kenmore ES	Shelton View ES	Crystal Springs ES	Moorlands ES	Fernwood ES	Woodin ES	Skyview MS	Wellington ES	Sunrise ES	Cottage Lake ES	Bothell HS	Inglemoor HS	East Ridge ES	Frank Love ES	Lockwood ES	Timbercrest MS	Arrowhead ES	North Creek HS	Bear Creek ES	Woodinville HS	Kokanee ES	Canyon Creek ES	Leota MS	Northshore MS	Canyon Park MS	Sorenson Early Childcare Center	Woodmoor ES	Kenmore MS	Secondary Academy for Success	Ruby Bridges ES	Innovation Lab HS						
1.00	1.00	1.01	1.01	1.01	1.01	1.00	1.00	1.01	1.01	1.01	1.01	1.00	1.00	1.00	1.00	1.00	1.00	1.01	1.01	1.00	1.00	1.01	1.01	1.01	1.00	1.00	1.01	1.01	1.01	1.00	1.00	1.00	1.00						
Facility																																						Covered Walkway	

Condition & Performance Equally Weighted.  
Capacity Not Considered.

Elementary Schools										Middle Schools										High Schools										Other Programs									
Bear Creek ES	Sunrise ES	Moorlands ES	Hollywood Hill ES	Westhill ES	Inglemoor HS	Shelton View ES	Maywood Hills ES	Arrowhead ES	Fernwood ES	Leota MS	Kenmore ES	Crystal Springs ES	Wellington ES	Lockwood ES	Timbercrest MS	Canyon Park MS	Frank Love ES	Cottage Lake ES	Woodin ES	Canyon Creek ES	Kokanee ES	Sorenson Early Childcare Center	Bothell HS	Skyview MS	East Ridge ES	Northshore MS	Woodmoor ES	Kenmore MS	Woodinville HS	Secondary Academy for Success	North Creek HS	Ruby Bridges ES	Innovation Lab HS						
1.00	1.00	1.00	1.00	1.00	1.00	1.00	1.00	1.00	1.00	1.00	1.00	1.00	1.00	1.00	1.00	1.00	1.00	1.00	1.00	1.00	1.00	1.00	1.00	1.00	1.00	1.00	1.00	1.00	1.00	1.00	1.00	1.00							
Family																														Cooksonville Barnes, Jr.									

All Factors Equally Weighted.

Elementary Schools																																Middle Schools										High Schools										Other Programs									
Westhill ES	Shelton View ES	Maywood Hills ES	Crystal Springs ES	Moorlands ES	Hollywood Hill ES	Kenmore ES	Sunrise ES	Fernwood ES	Wellington ES	Woodin ES	Skyview MS	East Ridge ES	Inglemoor HS	Lockwood ES	Arrowhead ES	Frank Love ES	Cottage Lake ES	Bothell HS	Bear Creek ES	Timbercrest MS	Kokanee ES	Leota MS	Canyon Creek ES	Woodinville HS	Canyon Park MS	Sorenson Early Childcare Center	Northshore MS	Woodmoor ES	North Creek HS	Kenmore MS	Secondary Academy for Success	Ruby Bridges ES	Innovation Lab HS																												
1.00	1.00	1.00	1.00	1.00	1.00	1.00	1.00	1.00	1.00	1.00	1.00	1.00	1.00	1.00	1.00	1.00	1.00	1.00	1.00	1.00	1.00	1.00	1.00	1.00	1.00	1.00	1.00	1.00	1.00	1.00	1.00	1.00	1.00																												
Color by Facility																																																													



# Break Out!

**Think. Pair. Share.**





# Thank you!

The next meeting is:

**Monday, April 5, 5:30-7:30 p.m.**

Summaries of today's meeting will be sent to each of you and posted to the website.

Please continue to fill out the *"Tell Us About Yourself"* boards.

Data sets will be distributed before the next meeting.

If you have any questions please contact:

Ashley McClaran [amccclaran@oacsvcs.com](mailto:amccclaran@oacsvcs.com)

and

Steve Murakami [smurakami@oacsvcs.com](mailto:smurakami@oacsvcs.com)