



Meet the Teachers of IB



Eric Adair



Christopher
Ancheta



Mathew Arnold



Anais Arteaga



Eneida Bejko



Charles Blanco



Jeannie Chipps



Beth Cox



Jane Dinh



Veronique
Fastre-Blavier



Kelly Gomez



David Gumbiner



Wendy Hagan



Stephen Herr



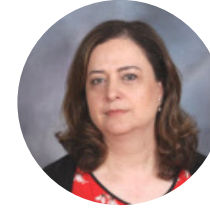
Christina Hoppe



Sean Lewis



Brian Luko



Manar Mayalah



Meghan
McGovern-Garcia



Reena Mistry



Cindy Quintana



Colin Strand



Dennis Tanner



Stefani Thomas



Spencer Wolf



Heather Yoo



FAQs

Inside this guide, you will find answers to the following frequently asked questions:

- How is IB different from AP?
- Can you earn college credit for IB classes?
- Are IB classes weighted?
- Can an IB student also take AP classes?
- What does it take to earn an IB diploma?
- What do IB students do for community service?
- What assessments do IB students take?
- Which teachers teach in the program?
- How does the IB Programme help a student manage their rigorous courseload?
- What does an IB schedule look like?
- How can IB help students to be competitive on their college applications?
- Can an IB student still participate in extracurricular activities and sports?
- Where do IB students go to school after high school?

If you have any other questions, please don't hesitate to reach out to one of our coordinators or counselor.

General and Academic Information

Sean Lewis
IB Coordinator
slewis@ghctk12.com

Community Service

Cindy Quintana
CAS Coordinator
cquintana@ghctk12.com

Scheduling and Graduation Requirements

Melisa Jimenez
IB Counselor
mjimenez@ghctk12.com

What Sets IB Apart?

Community

When you join IB, you join an international network of schools and students with similar educational experiences, but more importantly you join a cohort of learners on this campus who go through the program together

Sense of Identity

On a campus of nearly 5,000 students, it can be easy to disappear into the crowd at GHC. IB gives students a chance to find their niche and develop a sense of self

College Planning and Results

Only program on campus with workshops designed to help students find the right college fit and to complete the application
IB students go on to top-tier institutions ranging from the Ivy League to elite liberal arts colleges and the UC and CSU systems

College Scholarships and Major Awards

IB students are frequently in contention for and win major full-ride scholarships and awards from programs like QuestBridge, Posse Scholars, Milken Scholars, Coca-Cola Scholars and Bezos Scholars among many others

Community Service

Service is built into the program to help our students connect to the issues that matter to them as well as prepare them for life beyond high school at college and beyond

Dedicated Study Spaces

Only program on campus with dedicated study spaces for IB students during gap period and after school. This includes a weekly stress-management and mindfulness workshop

Dedicated Coordinators and Counselor

IB Coordinator Sean Lewis, CAS Coordinator Cindy Quintana, and counselor Melisa Jimenez guide students through every aspect of their high school experience from course selection to the college application process

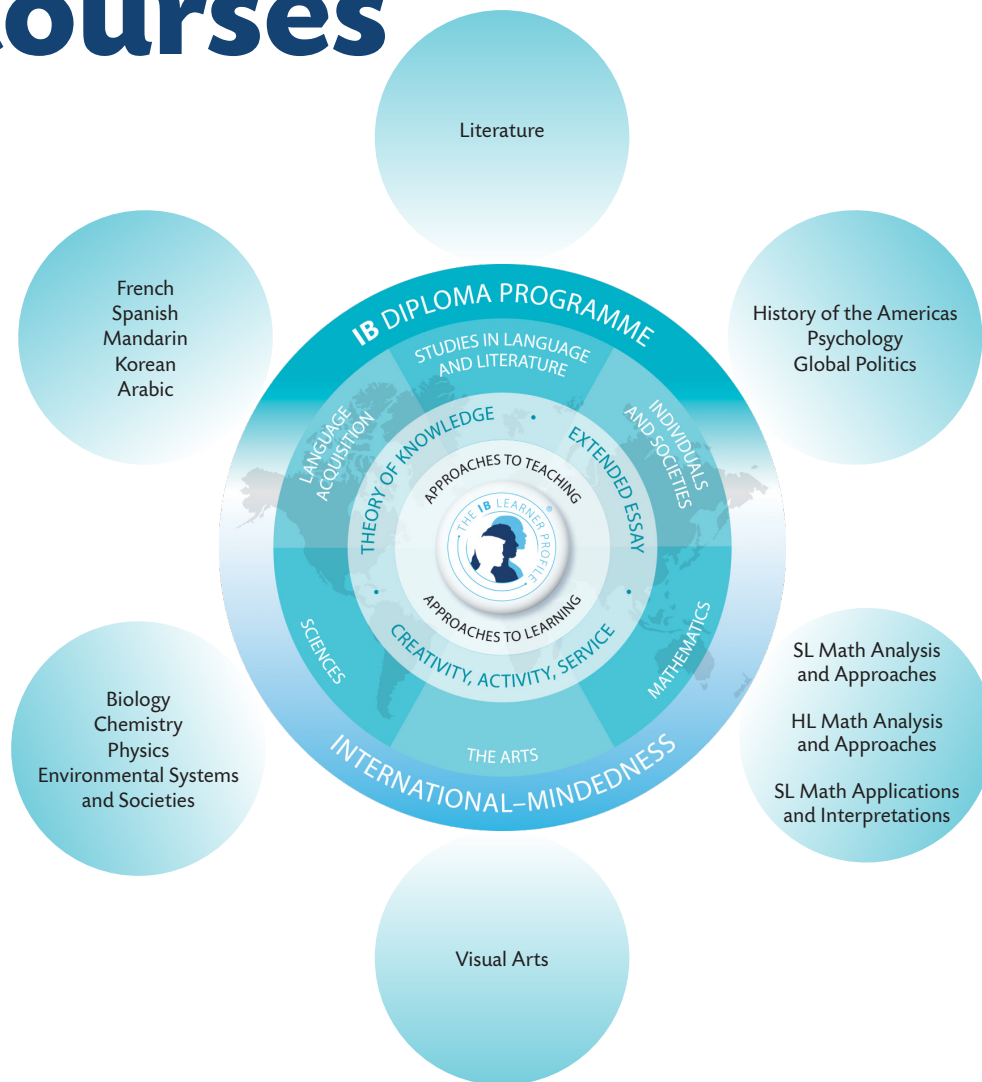
Great Teachers

IB teachers receive special training to teach IB courses and are carefully chosen from GHC's great faculty for their ability to foster collaboration and challenge students to excel

Alum Network

Because of the personal connections made in the program, IB alumni remain in contact with the program's coordinators and teachers and are a resource for current students

IB Courses



IB Diploma Requirements

- All IB Diploma Programme candidates must meet the following requirements:
- Successfully test in six subjects; one from each of the subject areas
 - Students may choose not to take a class in the arts, and may instead take an additional science course, language course or individuals and societies course as their elective.
 - Complete the Extended Essay
 - 4,000-word research project on a subject of the student's choice
 - IB's version of the senior project
 - Meet all CAS requirements
 - Community Service Project
 - Pass the Theory of Knowledge Assessments
 - Presentation in 11th grade
 - Essay in 12th grade

Grade Weighting

- All IB classes are weighted
- All IB classes, with the exception of Theory of Knowledge and Environmental Systems and Societies, are available at the Higher Level (HL) or Standard Level (SL)
 - HL classes are weighted exactly like AP classes with a 1.0 GPA boost
 - SL classes are weighted like honors classes with a .5 GPA boost.
 - When applicable, SL classes are listed as AP classes (e.g. AP Psychology) on the student's transcript in order to ensure the strongest GPA possible
 - As a general rule, IB students have the strongest GPAs on campus (5 of the top 10 this year are IB students)

IB Assessments - AP vs. IB

- IB is assessed on a scale of 0 - 7. Scores of 5 or higher on HL exams earn college credit comparable to AP exams
- Unlike AP scores, which are determined solely by one exam in May for most classes, IB scores are comprised over several assessments completed over the course of the two-year program
 - Internal Assessments: Scored by GHC teachers and completed in class with the help of teachers. This includes presentations, lab experiments, research papers, and oral exams. Approximately 20% of the overall course grade in most subjects.
 - External Assessments: Scored externally by IB examiners. Some are completed in class and sent to IB (e.g. writing assignments in English and world language courses). This also includes the end-of-program exams in May.
 - The additional assessments and the teacher feedback means that IB students have more opportunities to earn a qualifying score on IB subjects than AP students do.
- Although colleges do not offer college credit for SL exams, many IB students choose to take the AP equivalent (e.g. AP Psychology) in order to gain that credit.

Model Schedules from IB Alum



Junior Year

HL IB Biology 1A/1B
HL IB History 2A/2B
HL IB Mathematics 1A/1B
HL IB English 1A/1B
SL IB Spanish 1A/1B
CP Advanced Orchestra A/B
IB Theory of Knowledge 1A/1B

Current Student at Yale
STEM focus
MUN, Captain
First Chair, Cello
Mission Ignition

Senior Year

HL IB History 1A/1B
HL IB Spanish 1A/1B
HL IB Mathematics 2A/2B
HL IB English 2A/2B
HL IB Biology 2A/2B
CP Advanced Orchestra A/B
IB Theory of Knowledge 1A/1B



Junior Year

HL IB History 2A/2B
HL IB Physics 1A/1B
SL IB Mathematics 1A/1B
HL IB Spanish 2A/2B
HL IB English 1A/1B
HL IB Visual Arts 1A/1B
IB Theory of Knowledge 1A
Track & Field Boys'

Current Student at
Cal Poly SLO
Architecture Major
Cross Country

Senior Year

HL IB English 2A/2B
HL IB History 1A/1B
AP Calculus B/C
CP French 1 A/1B
HL IB Chemistry 1A/1B
IB Theory of Knowledge 1A/1B
Cross Country Boys' Var



Junior Year

HL IB History 2A/2B
HL IB Biology 1A/1B
HL IB Mathematics 1A/1B
HL IB English 1A/1B
Associated Student Body 1/2
AP Psychology A/B
Track Conditioning/ Track & Field

Current Student at Harvard
Electric Engineering
ASB Treasurer
Speech and Debate,
Treasurer
MUN, Captain
Science Team, Science Bowl
ALA Boys State

Senior Year

HL IB English 2A/2B
HL IB Mathematics 2A/2B
HL IB History 1A/1B
Associated Student Body 1/2
HL IB Biology 2A/2B
HL IB Global Politics 1A/1B



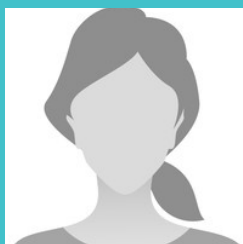
Junior Year

HL IB Chemistry 1A/1B
HL IB History 2A/2B
SL IB Mathematics 1A/1B
HL IB English 1A/1B
Associated Student Body 1/B
SL IB Spanish 1A/1B
IB Theory of Knowledge 1A/1B
Track & Field Boys'

Current Student at
Georgetown
Track Captain
ASB President
Show Choir

Senior Year

HL IB History 1A/1B
HL IB Mathematics 1A/1B
CP Show Choir
HL IB English 2A/2B
Associated Student Body 1/2
HL IB Chemistry 2A/2B
Cross Country Boys' Var/Track & Field



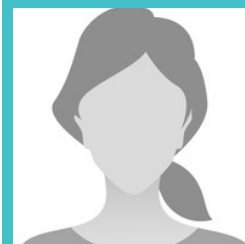
Junior Year

HL IB Biology 1A/1B
HL IB History 2A/2B
HL IB Mathematics 1A/1B
SL IB Spanish 1A/1B
HL IB English 1A/1B
AP Psychology A/B
Volleyball Girls'
IB Theory of Knowledge 1B

Current Student at Bucknell
Posse Scholar
Volleyball

Senior Year

HL IB Spanish 2A/2B
HL IB History 1A/1B
AP Statistics A/B
HL IB English 2A/2B
HL IB Biology 2A/2B
IB Theory of Knowledge 1A/1B
Volleyball Girls'



Junior Year

HL IB Chemistry 1A/1B
HL IB History 2A/2B
SL IB Mathematics 1A/1B
SL IB Mandarin A/B
HL IB Biology 2A/2B
HL IB English 1A/1B
IB Theory of Knowledge 1A/1B

Current Student at Yale
Chemistry Major
Science Bowl/
Chemistry Olympiad
SAT Tutor

Senior Year

HL IB English 2A/2B
HL IB Mandarin 2A/2B
AP Calculus B/C
HL IB History 1A/1B
HL IB Biology 1A/1B
HL IB Chemistry 2A/2B
AP Physics 1A/1B

IB Students Beyond the Classroom

The academic schedule takes up a significant portion of the typical IB student's day, but our students are still able to incorporate rich and extracurricular activities and garner major awards outside of class.

Clubs

Not only do many IB students participate in on-campus clubs, but 24 of GHC's clubs had IB students for presidents in the 2018-19 school year.

Academic Teams

IB students are well-represented on most academic teams on campus including Speech & Debate, Model United Nations, Robotics, Science Team and Envirothon.

Athletic Teams

Many IB students play one or more sports including football, volleyball, water polo, golf, soccer, tennis, cross country and track & field

Awards

IB students have applied for and received grants totalling over \$10,000 for community service projects from a wide array of sources and competitions

Community Service

Service is built into the IB Programme, and as a result IB students enjoy a rewarding and rich opportunity to serve their communities, gain meaningful life experiences and build their resumes.

Scholarships and Scholar Programs

As a result of everything listed above, IB students are excellent candidates for major programs and full-ride scholarships. Each year sees a number of QuestBridge and Posse Scholarship finalists from the IB Programme. The list of honors and scholarships that IB students have won also includes The Gates Foundation, Milken Scholars Program and the Bezos Scholars Foundation.

How Can IB Help with College?

IB students have an edge in all seven of the facets that colleges consider for admission

Objective Elements

GPA

- IB grades are weighted at a level comparable with AP courses.
- 80% of IB 12th grade students have at least a 4.0 GPA
- 52% of IB 12th grade students rank in the top 100 at GHC
- 5 of GHC's top 10 12th grade students are in IB

Test Scores

- Ongoing advising and test-taking plans
- Students receive intensive writing instruction in all IB courses
- 23 of Granada's top 50 PSAT scores were earned by IB students

Strength of Schedule

- IB students are required to take more weighted courses than other programs
- IB students can graduate with 6-7 years of science
- IB students can graduate with 4-6 years of a world language
- IB students have access to the highest level calculus course (beyond Calculus BC)

Subjective Elements

Letters of Recommendation

- Many IB courses have smaller class sizes
- IB students work one-on-one with teachers on research projects
- IB students will have some teachers for 2-3 years
- Full-time coordinator and counselor who write letters

Extracurricular and Service

- Community service is a required part of the IB program
- IB students design and implement a 2-year mission-driven service project
- Full-time community service coordinator for support
- 40% of IB students participate in a GHC extracurricular activity or sport

Personal Statement Essays & Interviews

- Reflective writing is an essential component of IB courses
- Presentations and oral assessments are essential components of IB courses
- IB students participate in workshops designed specifically to help with college application essays
- IB students have meaningful experiences through service to write about in their personal statements

Where We Go

4 Year Institutions with GHC IB Alum

