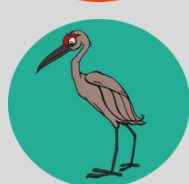


**in
this
together**



Grades K-5

Phase 3 Reopening Plans Finishing the Year Strong

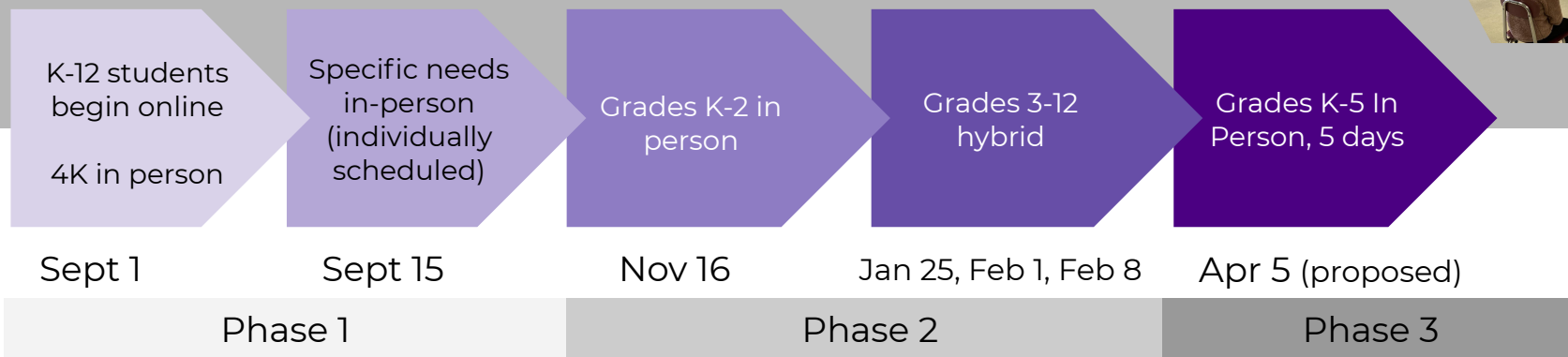
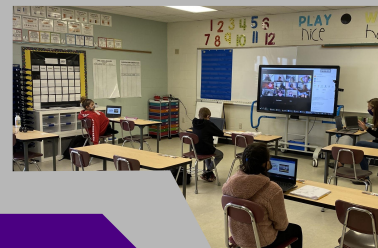
Monday, March 15, 2021





Maximizing Student Engagement

SASD Phased Reopening



SASD Virtual Vikings

Full virtual learning all year



Progress and Opportunity

Vaccinations

Numbers as of March 15 at 3 p.m.

Staff Members & Service Providers

522

total

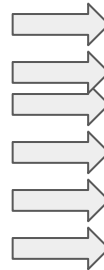
91%

said they intended
to get the vaccine

401 (77%)

have received the vaccine
or have an appointment
scheduled that we know of

includes



All full and part-time staff
Taher food service
Pool staff
Community coaches
Substitutes
etc.

Progress and Opportunity

Emergency Order #14

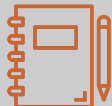
- In effect March 10
- Loosened 6' distancing requirement
- "Greatest extent possible"
- Continue to emphasize cohorting

CDC Guidance

- Quarantine guidelines for people who are vaccinated

Learning Goal

All students will



- be **engaged** in learning appropriate for their grade level,
- **held to standards** that further and expand their options in and beyond school,
- **assigned meaningful activities** that are equitably assessed,
- **supported** in their physical, social/emotional and mental health needs

in any school model.

Family Choice



Families may choose to have their child attend school virtually.



Families may choose to send their children to school 5 days a week.

What Changes and What Stays the Same (✓):

	Current Model	Proposed Model
Student Daily Schedules	✓	✓
Curriculum	✓	✓
Embedded Community building	✓	✓
Asynchronous Specials	✓	✓
Additional Supports for students	✓	✓
Distancing	6 feet	Decreased (3-6 Feet)

The Day to Day



Arrival & dismissal

Mid-day pick up

Health visits & isolation rooms

Bathrooms & drinking fountains

Recess

Lunch & snacks

Masks, sanitizing, distancing

Question: How will we continue to engage 3-5 Virtual Vikings when smaller in number?

Enhance clarity, deepen learning, & foster community by continuing to:



[Click to view](#)

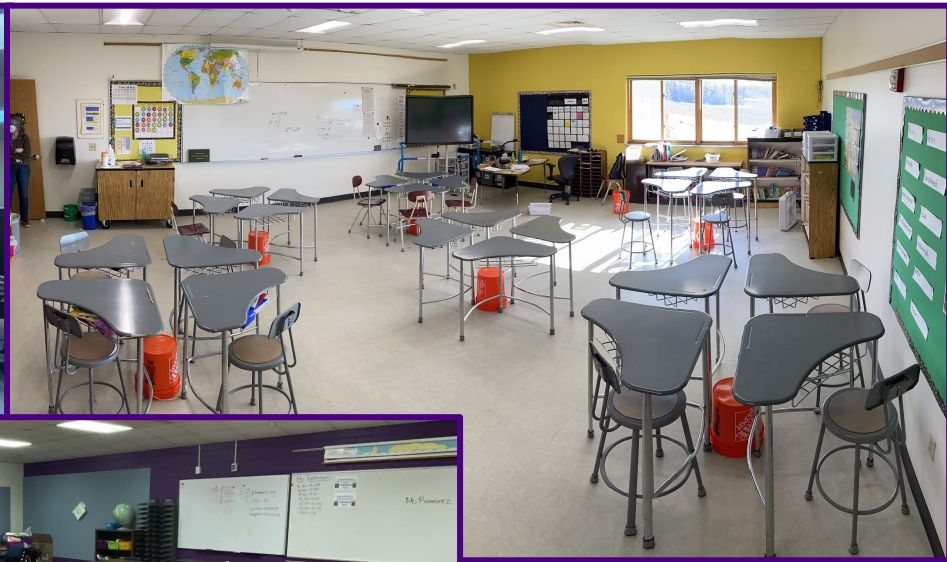
- Facilitate interactivity & connection across cohorts
- Leverage Google Classroom to gauge & respond to student learning
- Balance synchronous time with need for breaks
- Manage transitions among content areas, instructional delivery and/or Zoom breaks
- Support students with IEPs & other exceptional needs

Question: How are we serving students with disabilities?

- Each IEP team considered the **individual needs** of students based on IEP goal progress/gen ed curriculum and with the parent made a determination on the prioritization of in person services.
- For parents who choose to remain virtual IEP team members students will continue to receive services virtually in collaboration with parents.
- Each student with a disability has what is called a contingency plan for what services look like during in person and during distance learning.
- IEP teams (including parents) will also consider **additional services** for each student with a disability in the district based on progress on IEP goals, access to gen ed curriculum and any additional needs that have come up due to the spring closure and continued virtual instruction (WI DPI requires this to be done for every student with an IEP by 3/1/2021).
 - Additional services may include either increased services during the school year or services that will be provided over the summer (2021)



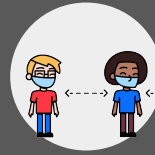
Classrooms at a Glance



We meet all School Requirements provided by Public Health Madison & Dane County. These can be found at [stoughton.k12.wi.us > COVID-19 > Health & Safety](https://stoughton.k12.wi.us/COVID-19/Health%20Safety).



Health & Safety



Physical distancing (distance as much as possible yet distances of 2'-4' may be necessary)



Frequent hand washing & sanitizing is an essential. Stations are set up around our buildings.



Mask wearing is required of all staff and all students.



Symptom monitoring is a responsibility of our families, staff and students.



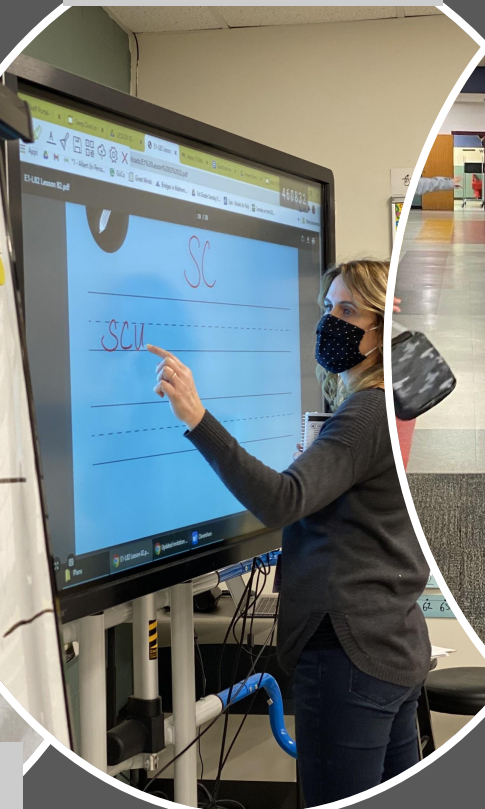
New air filtration technology - "Needlepoint Bipolar Ionization" is a newly installed technology to keep our air clean.



Lunch



Instruction



Hallways



Let's go to
elementary school

Providing Meals to Students



	No change	How it works
Virtual (K-12)	✓	Onsite pick up
In-Person (K-2)	✓	Breakfast, lunch at school. Grab & go on the weekends
In-Person (3-5)		Receive lunch at school when desired Onsite pick up includes lunch for Saturday and Sunday and breakfast for 7 days
Hybrid (6-12)	✓	2 options available. May participate in option 1 and/or option 2

Transportation

As we move closer to a transition, more information will be sent to families who are eligible for transportation.

Health & Safety

- Assigned seats
- Masks required
- Families encouraged to transport children
- Target the lowest numbers possible on a bus

Family Communication

- Families who are bus eligible will receive an email directly from transportation
- Due to the pandemic, physical distancing goals, and general space needs, we will be unable to accommodate requests for transportation for ineligible children or requests to alternate locations.



Remember our bus expectations video?



Suspected or Confirmed Case Criteria

If an individual meets one or more of these three criteria, we will follow our [Suspected or Confirmed Case Action Plan](#).



1. Individual has tested positive for COVID-19



2. Individual is experiencing symptoms of COVID-19



3. Individual has had close contact with someone who has tested positive for COVID-19

Suspected or Confirmed Case Procedure - Student

If a student meets one of the Three Criteria, we will follow the procedure below:

Student at School

Staff member contacts health office



Student is escorted to isolation room for evaluation



District nurse determines next steps based on criteria met and DPI and PHMDC guidance



Student at home

Students stay home. Parent calls school. Parent fills out the Student COVID Form.

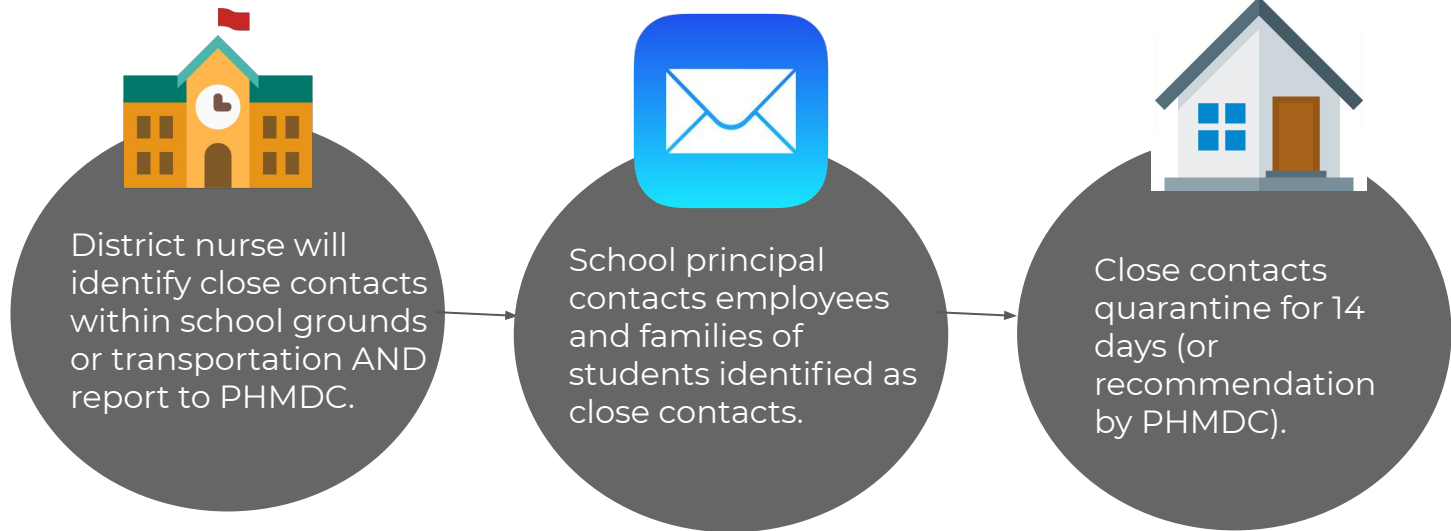
Health Assistant evaluates the form & may decide to call for more info.

Health assistant & District nurse determine next steps based on criteria met and DPI and PHMDC guidance

Staff follow a similar process but involve the HR director and notify their supervisor.

A Look at Contact Tracing

If an individual tests positive for COVID-19, we work collaboratively as a health office, school and with PHMDC to identify close contacts.



The nurse makes the final determination on close contacts and determines the quarantine dates and date of return. Only those who are determined close contacts are notified.

Question: As a staff member, what do I do if....?



...I tested positive
for COVID-19?



...I'm experiencing
symptoms of
COVID-19?



...I had close contact with
someone who has tested
positive for COVID-19?

Question: As a parent, what do I do if my student....?

Step 1: Immediately notify your supervisor and fill out the Staff COVID-19 Form. In general, if you do not meet any of the three criteria, you do not need to fill out the form.

Step 2: HR will be in contact with you to further assess your situation and determine next steps.

Step 1: Keep your student at home.

Step 2: Call your school's attendance line to report the absence.

Step 3: Fill out the Student COVID-19 Form at stoughton.k12.wi.us under the "COVID-19" Tab.

Step 4: Our health team will be in contact with you if additional info is needed and to determine next steps.

Supporting More K-2 Students in Person

Data as of March 15 at 3 p.m.

	KG	1st	2nd	Total (K-2)
Fox Prairie	4	5	9	18
Kegonsa	4	5	3	12
Sandhill	1	7	5	13

In-Person and Virtual Vikings by school and grade

Data as of March 15 at 3 p.m.

	Total by School (%*) (Full Time In Person)	Virtual to In Person (K-2)	Hybrid back to Virtual (3-5)	Virtual to In Person (3-5)
Fox Prairie	83.16%	18	1	23
Kegonsa	88.73%	12	1	13
Sandhill	82.46%	13	2	16

*Percentages are based on either 1. March survey response OR 2. if we haven't received a response, their current learning model.

- 4 students total across 3 buildings went from hybrid back to virtual.
- 95 virtual students now want to attend in person 5 days a week.



Questions?

