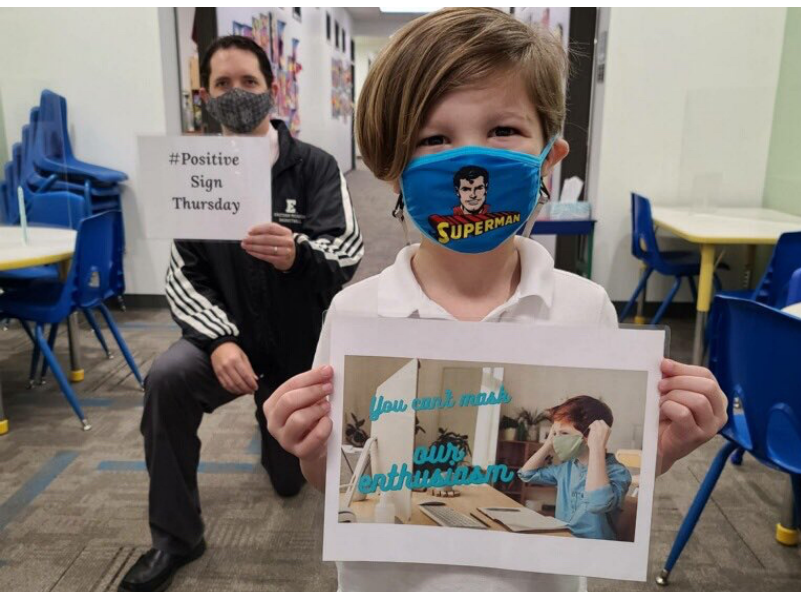




PLAN A

SCHOOL REOPENING PLAN LS FREQUENTLY ASKED QUESTIONS

MARCH 2021



The Lower School Day: Plan A

Under a Plan A, all public health requirements in addition to Pine Lake Preparatory health and safety protocols will be in place with the exception of the six foot social distancing requirements. It is important to understand that while we will support distancing within the classroom to the best of our ability, the increased classroom capacity will negate the opportunity to distance six feet.

The Daily Schedule: *Please note that the school hours will change, affecting arrival and dismissal times.*

MONDAY	TUESDAY	WEDNESDAY	THURSDAY	FRIDAY
Doors Open: 7:15 am Start Time 7:45 am End Time: 2:30 pm	Doors Open: 7:15 am Start Time 7:45 am End Time: 2:30 pm	Doors Open: 7:15 am Start Time 7:45 am End Time: 2:30 pm	Doors Open: 7:15 am Start Time 7:45 am End Time: 2:30 pm	Doors Open: 7:15 am Start Time 7:45 am End Time: 2:30 pm

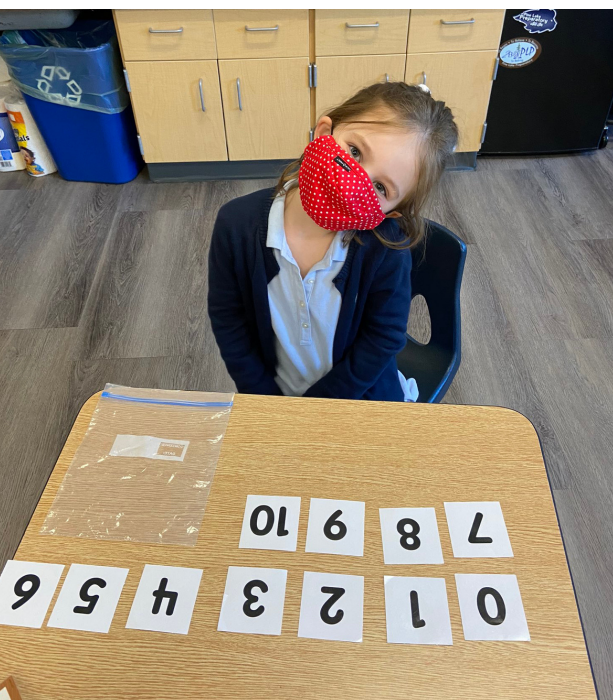
The Classroom Experience

Students will have English/Language Arts, Spanish, Social Studies, Science and Math each day.

- A rotation of encores will include STEM, Literacy, Music, Visual Arts and Physical Education
- Students will participate in recess each day
- Hot lunch options will be available daily

Lower School doors will open each day at 7:15 am for students and dismissal will begin at 2:30 pm.

- Kindergarten K-Wave: Families should arrive to pick up at 1:50 pm and will load between 1:55 pm and 2:05 pm. This helps us ensure the continued flow of traffic each afternoon.
- Traditional bus service will be available daily.



A Healthy and Safe Campus Through Layered Safety Protocols

To protect students, staff and the broader community, Pine Lake Preparatory has implemented mitigation strategies and encouraged behaviors that reduce the spread of COVID-19.

Family Attestation and Temperature Checks

Daily screening for symptoms and ongoing monitoring helps reduces the potential for exposure. The recognition of emerging trends and subsequent addition of symptoms (sore throat, congestion, runny nose) on the attestation has also supported additional preventative measures at PLP.

Availability and Adherence to Mask Use.

Masks offer some protection to the wearer and are also meant to protect others, in case the wearer is infected with the virus that causes COVID-19. All students and staff are required to wear a cloth face covering while on campus, with a medical exemption being the only exception.

Availability of Hand Hygiene Supplies and Opportunities for Use.

Washing hands with soap for 20 seconds or using hand sanitizer reduces the spread of disease. Pine Lake Preparatory has the supplies and opportunities to support effective hand hygiene.

Appropriate Air Ventilation.

Pine lake has taken steps to increase the delivery of clean air and dilute potential contaminants in the school. In addition to running MERV-13 filters, portable HEPA filters have also been installed in every classroom in an effort to support clean air. The HVAC systems on campus are set to maximize outside airflow for 2 hours before and after the school is occupied.

Routine Cleaning and Disinfection

In addition to regular and routine evening cleaning, Pine Lake has established a schedule for ongoing and routine cleaning and disinfection of high touch areas and spaces (doors handles, stair rails, faucet handles, toilets handles, light switches, etc.) throughout the school day.

Contract Tracing and Family Communication.

Through the employment of two full time nurses and an established relationship with the Iredell Health Department, Pine Lake Preparatory has been able to support effective contract tracing and communication.

Vaccine Availability for Staff.

School leadership has worked hard to advocate for the prioritization of vaccinations for all public frontline workers, such as teachers, school administrators, and K-12 support staff. Since vaccine eligibility was extended to educators on February 24th Pine Lake Preparatory has created access for all of its employees. Emerging research has suggested that the vaccines are not only preventing potential illness, but also limiting the potential for shedding/spread from those who have received the vaccine.

Protecting Vulnerable Populations

Full Remote (Plan D) Family Offering

Pine Lake Preparatory is committed to providing school choice options that meet the needs of our students and families. The development of a Full Remote (Plan D) is not only a good fit for families who remain concerned about the COVID-19 pandemic, but also for those who simply enjoy the benefits of learning from home during this time, while still having access to certified teachers and a challenging curriculum.

Teachers in the Full Remote, Plan D model will provide face-to-face instruction. Leveraging our iPads, students will be able to see and hear dedicated teachers deliver standards-based content, ask questions, participate in classroom discussions and independent work, and turn in class work from home.

What will my child's day look like?

Your child will have structured synchronous learning time on a consistent daily schedule, and also asynchronous activities that can be completed on a schedule that works for your family.

- Synchronous learning time is live instruction with a teacher. Live instruction with a teacher will include a math and reading/language arts instruction.
- Asynchronous learning time will consist of a combination of recorded instruction, assigned activities, and reading.

Who will teach my child?

Our Full Remote (Plan D) teachers are experienced classroom educators who have been assigned to the full remote students/families.

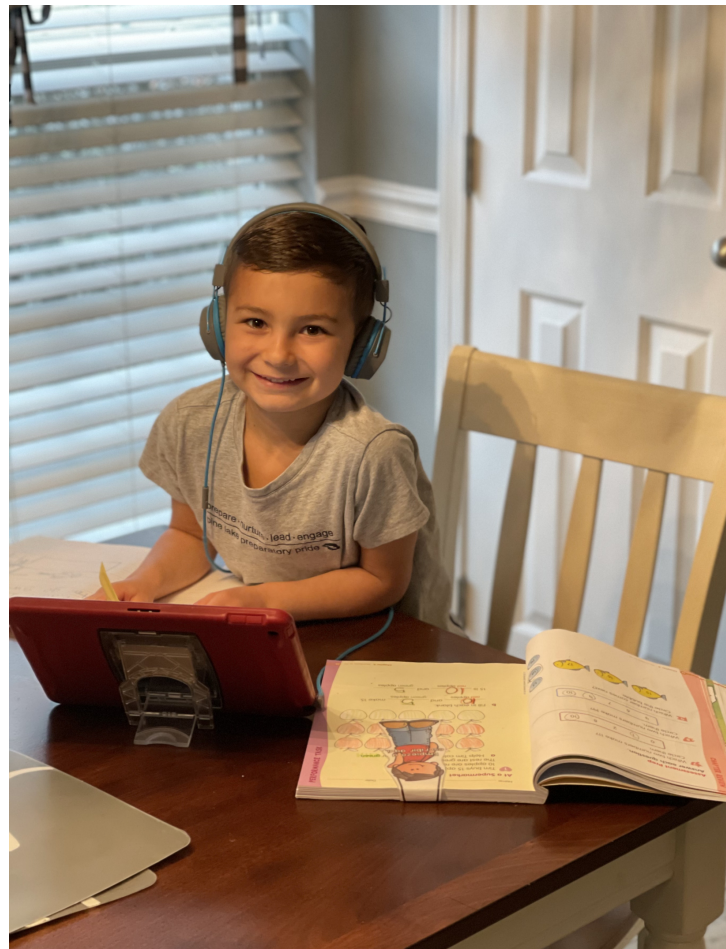
How do I know if this is the right fit for my child?

Consider your family's health and personal dynamics, as well as your child's needs for social interaction, consistency in the learning environment, tolerance and focus for screen time

What are student/family attendance expectations in the Full Remote Plan D program?

Attendance will be taken and recorded by the Full Remote (Plan D) teacher at the live teaching sessions. The expectation is that your child attends and participates in both live sessions as scheduled to be counted as Present.

***Information related to Enrollment in the Full Remote Program will be released the week of March 8th.**



Communication and Operational Protocols When Dealing With Positive Covid-19 Case in the Classroom Under a Plan A

Will I be notified if a student in my child's classroom tests positive for COVID-19?

Yes, if a student/adult in your child's classroom tests positive for COVID-19 you will receive notification from the school. Please understand that Pine Lake Preparatory will be working closely with the Iredell Health Department anytime there is a suspected, presumptive or confirmed case. See Appendix C for a sample classroom letter.

We will also continue to update the COVID-19 Dashboard to communicate positive tests in the school community. This information, will be available on the COVID-19 portal of PineLakePrep.org and will be updated every Friday by 5:00 p.m. See Appendix D for the template.

In the absence of six foot distancing, will the potential for exposure and classroom closures increase?

Yes, increasing capacity without the ability to increase the square footage of the classrooms will increase the potential for exposures.

Anyone determined to have been in “close contact” with the COVID-19 positive individual during the time he/she was contagious must be excluded from school for at least 10 days. Close contact is defined as being within 6-feet of a COVID-positive individual for more than 15 minutes (cumulative, with or without a mask), living in the same house with a COVID-positive individual, caring for someone who is recovering from COVID-19, or being in direct contact with respiratory droplets from someone who is COVID-19 positive. Those determined to have had “close contact” will be contacted personally by PLP.

While students are seated 6 feet apart under a Plan B, that will not be the case under a Plan A. We will distance to the best of our ability within the classroom, limiting potential of larger exposures. It is possible, and likely, that if a student tests positive within 24 hours of being in the classroom (or presenting the first symptom) we would need to shift the cohort to full remote for 14 days. During that time we would close the impacted classroom as we monitored for symptoms, cleaned and disinfected all areas of the classroom according to the recommendations from the Centers for Disease Control and Prevention and the North Carolina Department of Health and Human Services. See Appendix C.



Transportation

Shuttle Safety Protocols

Pine Lake Preparatory will continue to run morning and afternoon buses at reduced capacity and will follow necessary state safety guidelines for providing public transportation during this time:

- Screening protocols will be in place for all students, prior to boarding school transportation. This will include the temperature check and symptom attestation.
- Allowing only one passenger per seat with the exception of family members who will be asked to share a seat.
- All students will be required to wear a cloth face covering.
- Windows will be kept open while the vehicle is in motion to help reduce spread of the virus by increasing air circulation, when appropriate and safe.
- Busses will be sanitized following each run/route.

Route and Time Information

Morning shuttles and times will remain unchanged.

The first afternoon run will depart from PLP at 2:25 pm and should arrive at the shuttle stops no later than 2:45 pm. All Lower School students will need to ride the first shuttle. A second run carrying Middle and Upper School riders will depart from PLP at 3:20 pm and should arrive at each stop by 3:50 pm.

As bus capacity allowances increase, PLP will continue to reach out to families who are currently on the waitlists. For questions related to transportation please contact Joe Webb at Joe.Webb@PineLakePrep.org.



Appendix A: Symptom Attestation Document

Before students exit their vehicle during arrival, Lower School families will have already completed the symptom attestation through PikMyKid. Please take time to familiarize yourself with the questions. Families will need to complete the attestation any time their child is on campus.



Have you had close contact (within 6 feet for at least 15 minutes) in the last 14 days with someone diagnosed with COVID-19, or has any health department or health care provider been in contact with you and advised you to quarantine?

- ☐ Yes - The person should not be at school. The person can return 14 days after the last time they had close contact with someone with COVID-19, or as listed below.
- ☐ No - The person can be at school if they are not experiencing symptoms.

In the past 14 days, have you, or anyone in your household had any of these symptoms?

- ☐ Fever
- ☐ Chills
- ☐ Shortness of breath or difficulty breathing
- ☐ New cough
- ☐ New loss of taste or smell
- ☐ Sore Throat
- ☐ New congestion or runny nose

- ☐ Yes - If a person has any of these symptoms, they should go home, stay away from other people, and call their health care provider
- ☐ No - The person can be at school if they are not experiencing symptoms

In the past 14 days, have you been diagnosed with COVID-19?

- ☐ Yes - If a person is diagnosed with COVID-19 based on a test, their symptoms, or does not get a COVID-19 test but has had symptoms, they should not be at school and should stay at home.
- ☐ No - The person can be at school if they are not experiencing symptoms

Appendix B: Daily Screening

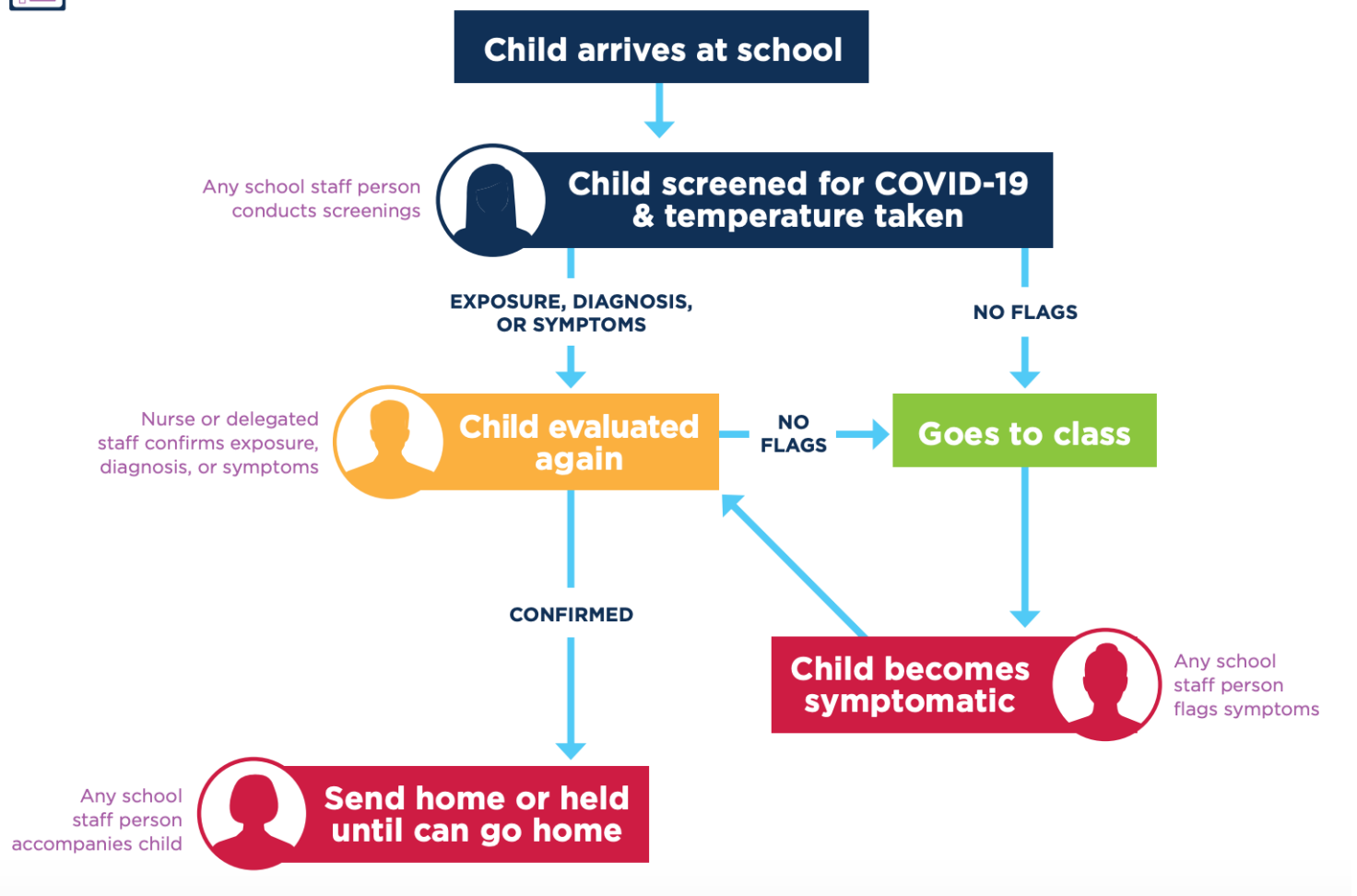
Before students exit their vehicle during arrival, Lower School students will be screened for symptoms as part of the attestation.

Pine Lake Preparatory will follow the North Carolina Health and Human Services guidelines for screening students as outlined in the flow chart below:

Daily Screening for COVID-19



Staff Roles Flow Chart



Daily Temperature Checks

In addition to the symptom attestation, Each student will have their temperature taken prior to exiting their vehicle. Anyone with a temperature above 100.3 degrees will not be permitted to enter the building. A second, follow up temperature will be taken by a school nurse or designated staff member to confirm a temperature above 100.3 degrees.

Appendix C: Sample Parent Notification



Good morning/afternoon/evening,

On Day, Month Date Pine Lake Preparatory received notification that a student/employee in **Teacher's, Grade Level classroom (Group 1/2)** has tested positive for COVID-19 (Coronavirus). While we must protect the privacy of the individual involved, we are committed to transparency in our community.

We have worked in collaboration with the individual, school staff and the Iredell Health Department to determine that there were no close contacts to the individual who tested positive.

Close contact is defined by being within six feet of a person that has been diagnosed with COVID-19 for at least 15 minutes, with or without a mask. Out of an abundance of caution, we will close the impacted classroom for **X days** as we continue to clean and disinfect all areas of the classroom, including any areas of potential impact in the building, according to the recommendations from the Centers for Disease Control and Prevention and the North Carolina Department of Health and Human Services.

Once more, please understand that you are receiving this letter in an effort to provide continual and transparent communication. Staff, as well as families in the classroom are receiving this note. The effective adherence to safety protocols and procedures have resulted in zero close contacts/exposures.

Attached you will find a formal communication from the Iredell County Health Department further illustrating our partnership, the dedication to ensuring a healthy and safe campus, and the handling of the positive test. We continue to encourage all parents to monitor students closely for any sign of potential illness. Students should remain at home if they are exhibiting any symptoms of COVID-19 including fever, chills, shortness of breath or difficulty breathing, new or persistent cough, and/or new loss of taste or smell.

We appreciate your continued support. If you have any questions, feel free to contact Rebecca Long (School Nurse) at Rebecca.Long@PineLakePrep.org or Andrew Mocerri (Executive Director) at Andrew.Mocerri@PineLakePrep.org.

Sincerely,

Andrew Mocerri
Executive Director
Pine Lake Preparatory

Appendix D: COVID-19 Dashboard



Pine Lake Preparatory is working hard to protect its approximately 1,800 students and 200 employees from COVID-19, but it's important to recognize that there will likely be positive cases this school year. While we are not immune to COVID-19, we can help to limit potential exposure/spread through the effective adherence to our Health and Safety Protocols.

Pine Lake Preparatory and the Iredell County Health Department will be working together to implement contact tracing when members of our school community test positive. We are committed to providing timely and transparent information to individuals who have potentially been exposed to COVID-19. At the same time, we must comply with state and federal mandates – including the Family Educational Rights and Privacy Act (FERPA) and the Health Insurance Portability and Accountability Act of 1996 (HIPAA) – to protect the privacy of our students and employees.

With that in mind, we will use the following COVID-19 Dashboard to communicate positive tests in the school community. This information will be available on the COVID-19 portal of PineLakePrep.org on Monday, September 28th and will be updated every Friday by 5:00 p.m.

Pine Lake Preparatory COVID-19 Dashboard

Building	Total Number of Individuals in the Building	Current Number of COVID-19 Positive	Current Percent of COVID-19 Positive
Lower School	X students/staff	0	0%
Middle School	X students/staff	0	0%
Upper School	X students/staff	0	0%

Last Updated: Friday, October 2nd