



Mt. Lebanon School District



March 2021

**Return to Full Day
Instruction**

*Presentation for
JES Families*



Mt. Lebanon School District

Arrival - K and Grades 1-5

- Time - 8:25-8:35 am
 - Encourage staggered arrival
- Masks **required** on school property
- Playground **CLOSED**
- Entrance Point - Moffett Street Location / GO Zone
- Report immediately to Homerooms
 - Lockers will be utilized and visited after Arrival
- Late bell - 8:35 am
 - JES Doors Close at 8:35 - All late arrivals must then use Ruth Street





Mt. Lebanon School District

Dismissal - K

- Time - 11:20 am
- Masks **required** on school property
- Playground **CLOSED**
- Exit Point - Moffett Street Location / GO Zone

Dismissal - Grades 1-5

- Time - 3:30-3:45 pm
- Masks **required** on school property
- Playground **CLOSED**
- Exit Point - Moffett Street Location / GO Zone





Mt. Lebanon School District

Lunch & Recess Schedule

- Maintain the traditional hour Lunch/Recess period
 - 12:00-12:20 (Grade 1)
 - 12:20-12:40 (Grades 2 & 5)
 - 12:40-1:00 (Grades 3 & 4)
- Recess will make up the additional 40 minutes of time
 - Please dress appropriately for the weather
- We will utilize outdoor eating and recess options at every opportunity

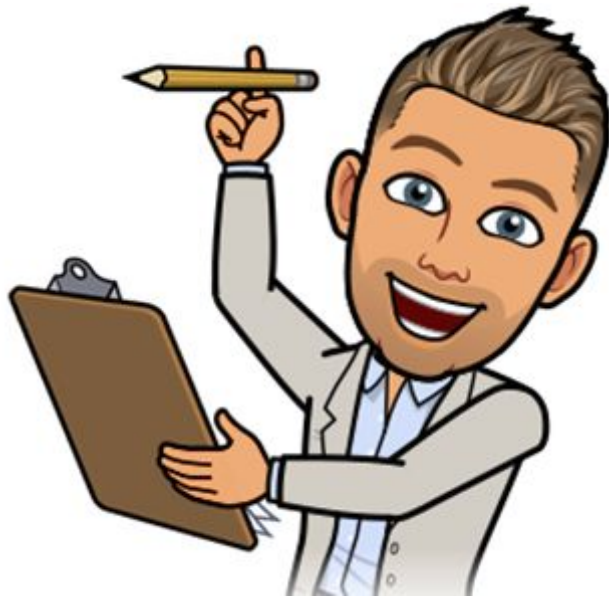




Mt. Lebanon School District

Lunch Protocols

- 20 minutes per grade level
- 6 feet of separation between all students
- Wash/sanitize hands **before** and **after**
- Masks **required** except when eating
- JES Gymnasium for Lunch
 - [Lunch/Recess Request to Return Home](#)
 - Cleaned before and after Lunch Hour
- Students **MUST** sit at chosen and assigned "Lunch Spot"
 - Optional "Tray Tables" for each student





Mt. Lebanon School District

Lunch Protocols

- Grab and Go meal service
 - Place order each morning in homeroom
 - Hot, Deli, Salad and Bagel Bag
 - On tables outside of JES Gymnasium
 - For remote/CLA students and families:
 - Maintain JES Ruth Street Location
 - MTLSD Food Services [FAQ](#)
- Packed lunches - please make it easy for students to manage on own
- Students mask up when done eating or when requesting help





Mt. Lebanon School District

Recess Protocols - Outdoor

- 40 minutes - Grades 1-5
 - Combination of 20 minute increments
- May use play structures
 - 1st and 2nd Grade
- Equipment for each grade level
- Wash/sanitize hands **before** and **after**
- Masks **required**
- Designated play spaces for each grade level
 - Upper Blacktop / Lower Blacktop / JES Back Playground





Mt. Lebanon School District

Recess Protocols - Indoor

- 40 minutes - Grades 1-5
- In various locations at JES (depending on Day/Availability)
- Students are encouraged to bring appropriate items to use
 - Books, Coloring, Mazes, Legos, etc.
 - When in doubt - ASK! :)
- Wash/sanitize hands **before** and **after**
- Supervised by JES Personnel
- Masks **required**

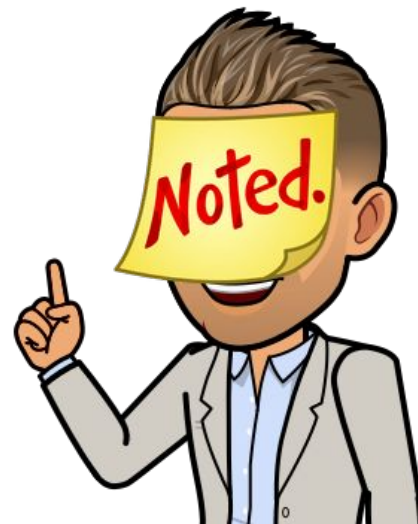




Mt. Lebanon School District

Schedule and Encores

- Resuming typical Encore offerings
- All encores to be held in typical locations
 - Sanitize/Wash BEFORE and AFTER
 - Takes place in the Homeroom
 - Distancing to greatest extent possible
 - Optional wipes for Encore Specific items
- All learning support, reading support, math support and related services will be in person
- Students travel to Encore and Support Services locations
- Homerooms will maintain cohorts during instructional day and LEBO

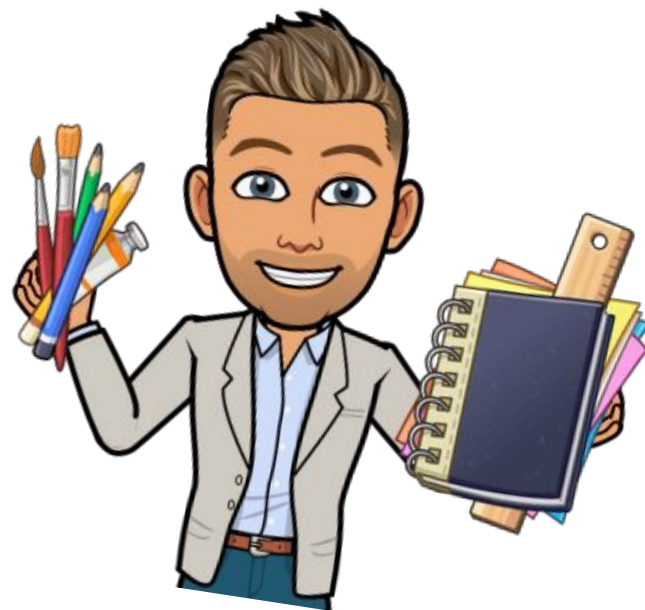




Mt. Lebanon School District

Building Specific Details

- Water bottles kept in lockers
 - Only drinks taken at lockers
- Please keep a spare mask in locker/bookbag
- Mask Breaks will remain
 - 10 minute intervals
 - Outdoor Locations
- Students must have a pencil box of supplies
 - Pencils, crayons, scissors, glue
 - Minimizes "shared supplies"
 - Used for Encore Classes





Mt. Lebanon School District

Safety Protocols

- Barrier Boards available in ALL instructional spaces
 - Shared in Encores where 6 feet cannot be attained
- Wash/sanitize hands **frequently**
- Masks **required** at all times
- One way directional hallways and traffic patterns
- Limiting students in restroom at same time
- Physical distancing marked at all communal spaces
 - JES Restrooms, Office, Health Suite, Counseling Corner

