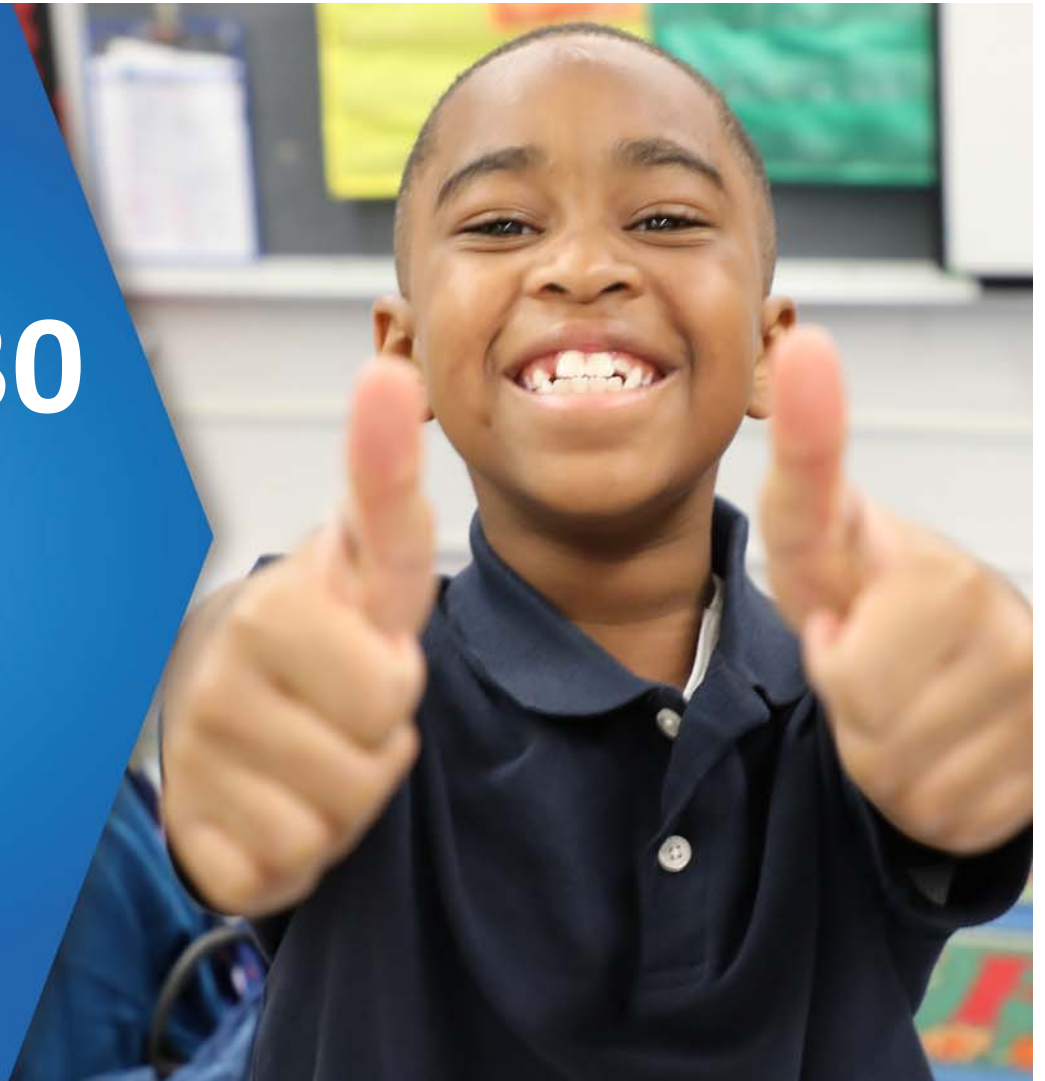


Blueprint 2030

Advisory Team Meeting
April 16, 2020

KANSAS CITY

PUBLIC SCHOOLS



Welcome/Introductions

- Dr. Mark Bedell
 - Superintendent
- Shannon Jaax
 - Director of Planning and Real Estate
- Linda Quinley
 - Chief Financial and Operations Officer
- Kelly Wachel
 - Chief Marketing and Communications Officer



Virtual Meeting Agenda and Tips

Agenda

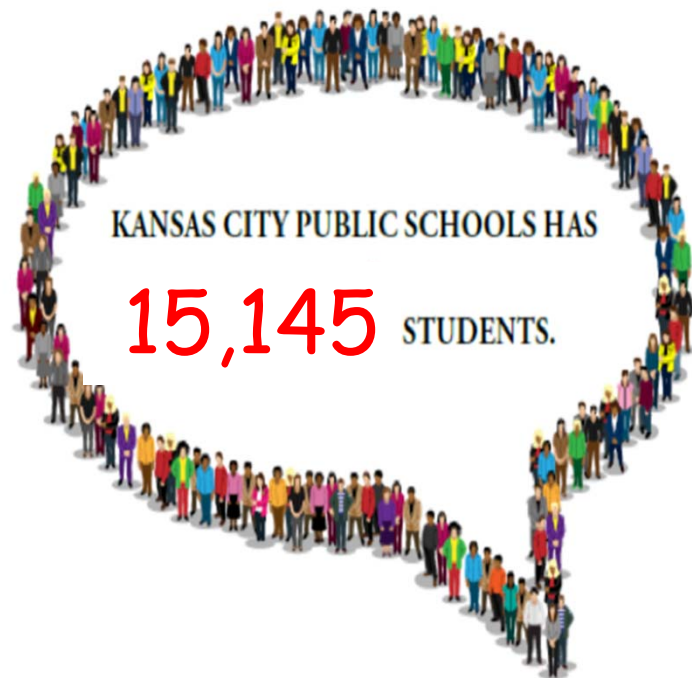
- Large Team Group
 - KCPS Overview and Highlights
 - Blueprint 2030 Overview
 - Blueprint 2030 Timeline
 - Background Information
 - Communication Planning
- Small Group Breakout Discussion

Meeting quick tips

- Meeting format
- Feel free to use the chat function
- We will moderate and answer the questions through the chat function
- “Mute” is your friend



KCPS Demographics



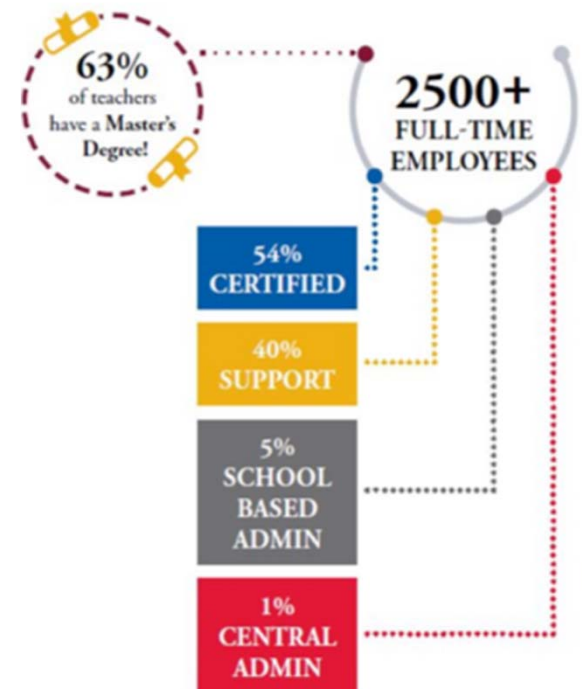
STUDENT DEMOGRAPHICS

56% African American

28% Hispanic

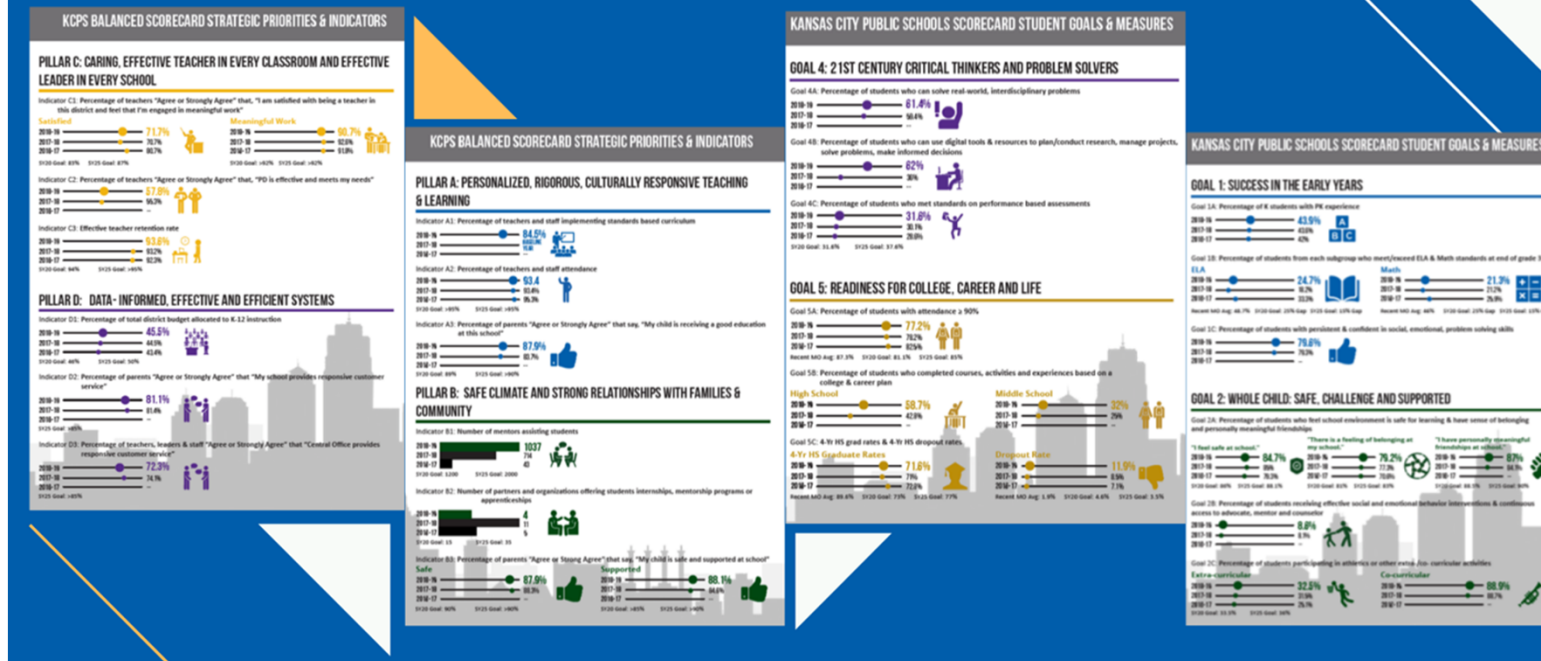
10% Caucasian

6% Other



Recent highlights

Priorities > Scorecard > Budget



Recent highlights

ACADEMICS AND CAREER EDUCATION

• REAL WORLD LEARNING • CARDINAL CAFÉ • WASTEWATER MANAGEMENT

PRESS RELEASE

KANSAS CITY PUBLIC SCHOOLS
DEPARTMENT OF COMMUNICATION AND COMMUNITY ENGAGEMENT
2901 TROOST AVENUE, KANSAS CITY, MO 64109
816.418.7420 • KCPUBLICSCHOOLS.ORG

Cardinal Café Takes Flight at Manual Career Tech

New café provides real-world learning experiences for culinary arts students

Kansas City, February 6, 2020: Coffee lovers have a new spot to roost in Kansas City thanks to the students of Manual Career and Technical Education Center.

Students, staff and leaders from across Kansas City Public Schools celebrated the grand opening of the new Cardinal Café during an event Tuesday morning, Feb. 4 at Manual Career Tech, which is located at 1215 E. Truman Rd.

PRESS RELEASE

KANSAS CITY PUBLIC SCHOOLS
DEPARTMENT OF COMMUNICATION AND COMMUNITY ENGAGEMENT
2901 TROOST AVENUE, KANSAS CITY, MO 64109
816.418.7420 • KCPUBLICSCHOOLS.ORG

Wastewater Management Student Earns National Distinction *Nasson Toban becomes the first high school student to pass certification exam*

Kansas City, December 13, 2019: East High School senior Nasson Toban wants to make sure you can have a glass of clean drinking water.

Mr. Toban recently became the first high school student in the nation to pass the Wastewater Treatment Plant Operator Certification exam, thanks to his participation in Kansas City Public Schools' new Wastewater Management program at Manual Career and Technical Education Center. As a result, he's now in line for a potential career opportunity with KC Water.



Recent highlights

Optional Programs KCPS



Kansas City Public Schools

•MIDDLE COLLEGE ACADEMY

Path for HS graduation for 17-24 year olds who dropped out of school.

•EARLY COLLEGE ACADEMY EXPANSION

Students earn HS and college credits on MCC-Penn Valley campus.

•CENTRAL EARLY HEAD START CENTER

Provides Early Head Start programming during the school day for children of KCPS students.



What is Blueprint 2030?

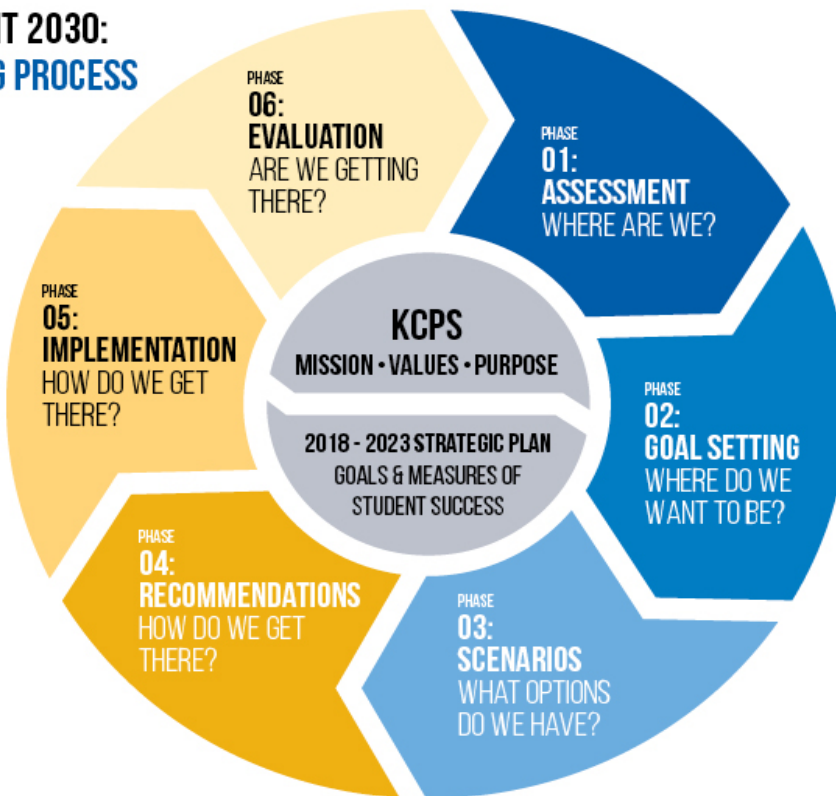
Will define how KCPS should serve students in the future... and the system-level changes we need to take to get there.

It is a blueprint that maximizes KCPS resources, improves efficiencies, and enhances the educational experience and academic outcomes for all students... to ensure all children living within the KCPS boundaries have access to a quality Pre-K through 12 educational experience and graduate ready for college, career and life.



What is Blueprint 2030?

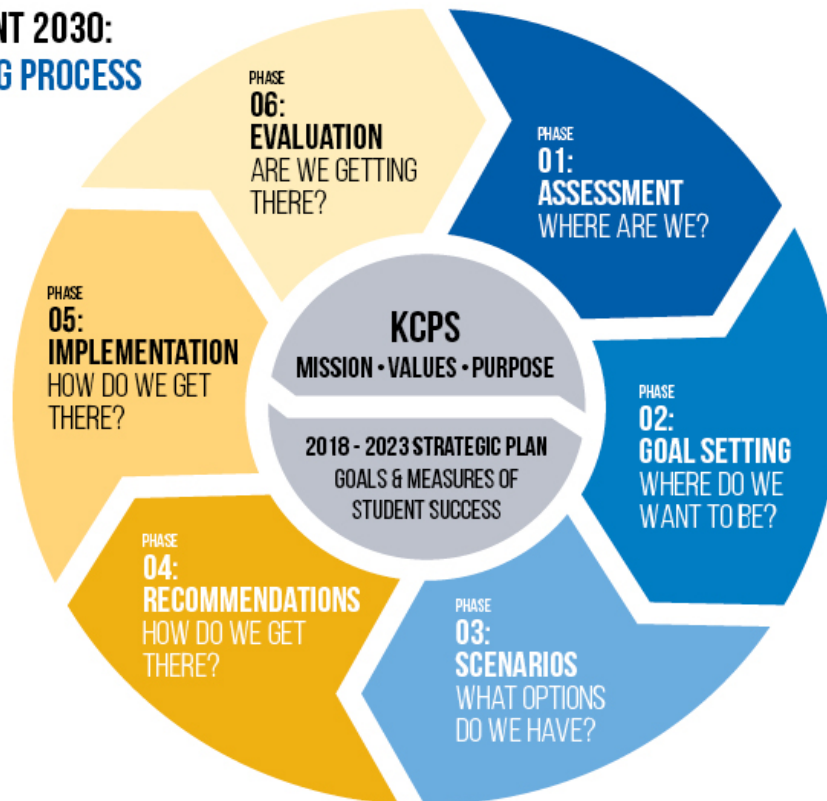
BLUEPRINT 2030: PLANNING PROCESS



- Phase 1: Conduct an assessment and evaluation of KCPS
July 2019 – March 2020
- Phase 2: Establish goals for the future
October 2019 – May 2020
- Phase 3: Evaluate scenarios/options to get us from where we are today to where we want to be in 2030
May 2020 – Summer 2020
- Phase 4: Identify recommendations
September/October 2020
- Phase 5: Implement recommendations
Beginning in Fall/Winter 2020
- Phase 6: Conduct regular evaluations
Annually

Blueprint 2030 Schedule: **Post** COVID-19

BLUEPRINT 2030: PLANNING PROCESS



- Phase 1: Conduct an assessment and evaluation of KCPS
July 2019 – May 2020
- Phase 2: Establish goals for the future
October 2019 – June 2020
- Phase 3: Evaluate scenarios/options to get us from where we are today to where we want to be in 2030
June 2020 – September 2020
- Phase 4: Identify recommendations
October - November 2020
- Phase 5: Implement recommendations
Beginning in Winter 2021 (in prep for SY22)
- Phase 6: Conduct regular evaluations
Annually

What is Blueprint 2030?

WHAT IT IS

- **Inclusive and community-driven:** A ten-year blueprint for and created by [Kansas City stakeholders](#)
- **Student-centered:** The KC community must provide [all children living within the KCPS boundaries](#) with access to a quality Pre-K through 12 educational experience and ensure they graduate ready for college, career and life
- **Data-driven:** Recommendations will be grounded in [data and research](#)

VS

WHAT IT IS NOT

- Just a KCPS plan
- Just a school facilities plan
- Just a school opening/closure/co-location plan
- Just an educational program plan
- Replacement of KCPS' Strategic Plan
- A marketing plan



Why do we need Blueprint 2030?

Approach

A sustainable future for all

KCPS wants to ensure all children living within the school district boundaries have access to a quality Pre-K through 12 educational experience and graduate ready for college, career and life. KCPS has been making great strides in academic achievement and providing engaging academic programming, but we know that additional progress is needed to better serve all our students.



Why do we need Blueprint 2030?

Questions that Blueprint 2030 will answer

How are neighborhood demographics/population changing?

What facility improvements are needed?

What will student enrollment be in the future?

How do we ensure all students achieve the Five Goals for Student Success from the KCPS Strategic Plan?

How do grade configuration, feeder patterns, signature themes, secondary options, special programs, contribute/detract from achievement expectations of KCPS and community stakeholders?

How can we address our operating inefficiencies?

Why do students/families choose our KCPS system and what keeps them with us?

How do we continue to provide greater equity?

How can we pay for school improvements?

Slide 13

SJ [2]2

The larger font items are the components that we want to downplay - more emphasis (larger font) on student offerings/achievement...

Shannon Jaax, 3/12/2020

Roles/Responsibilities

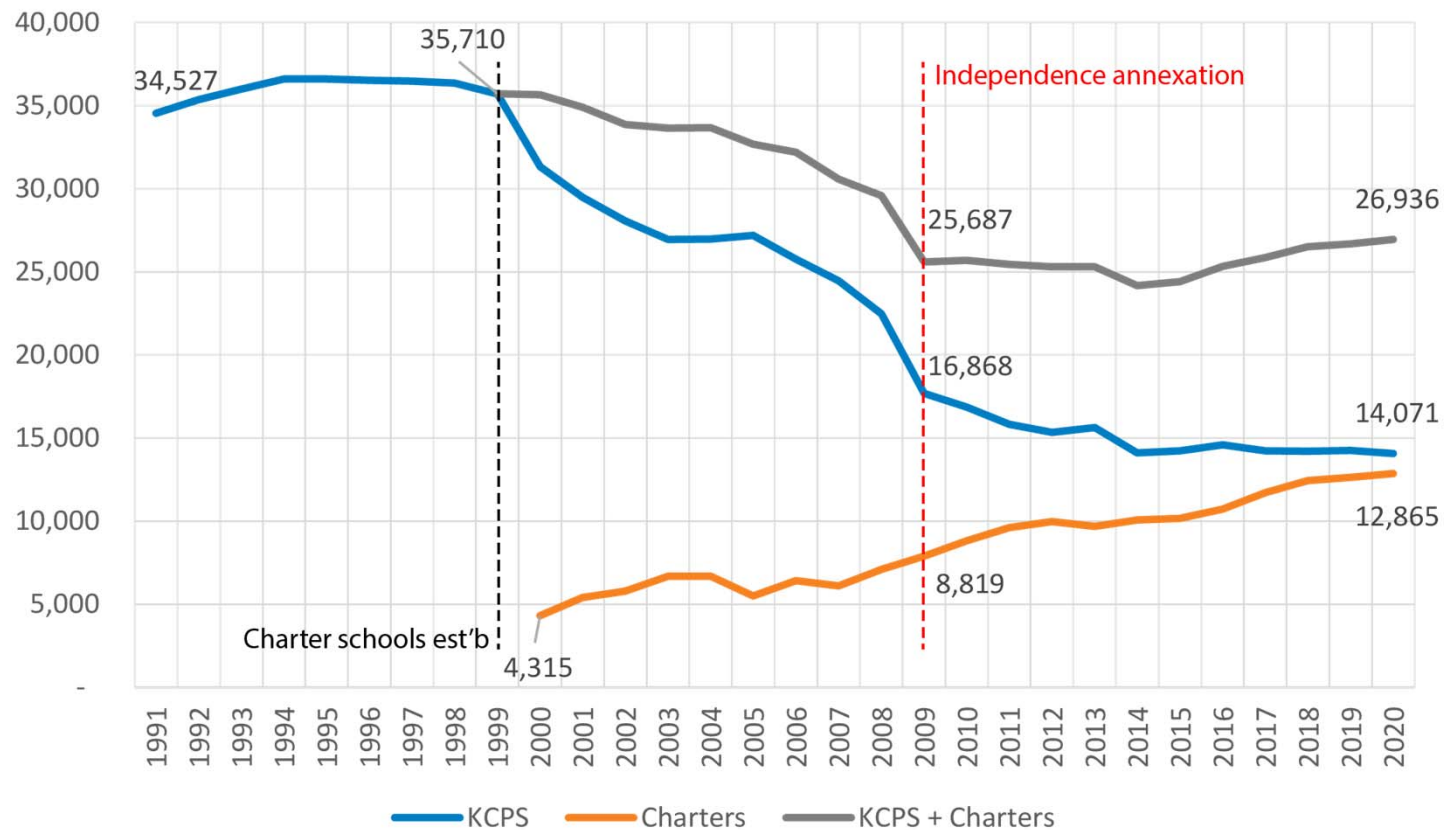
- Superintendent and Board of Education
- Blueprint 2030 Advisory Team
- Technical Team
- Communications Team



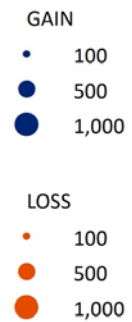
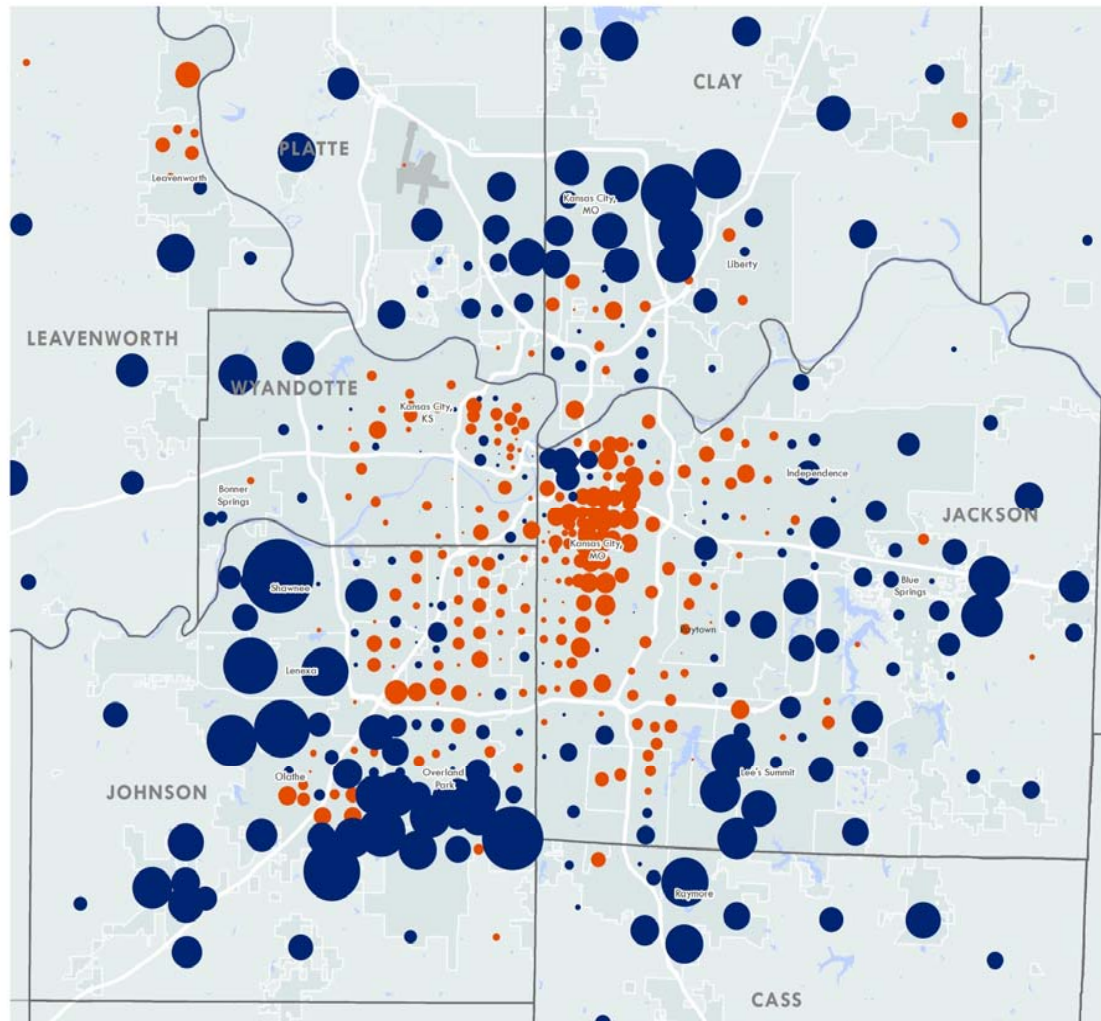
Background Info



K-12 Historical Enrollment

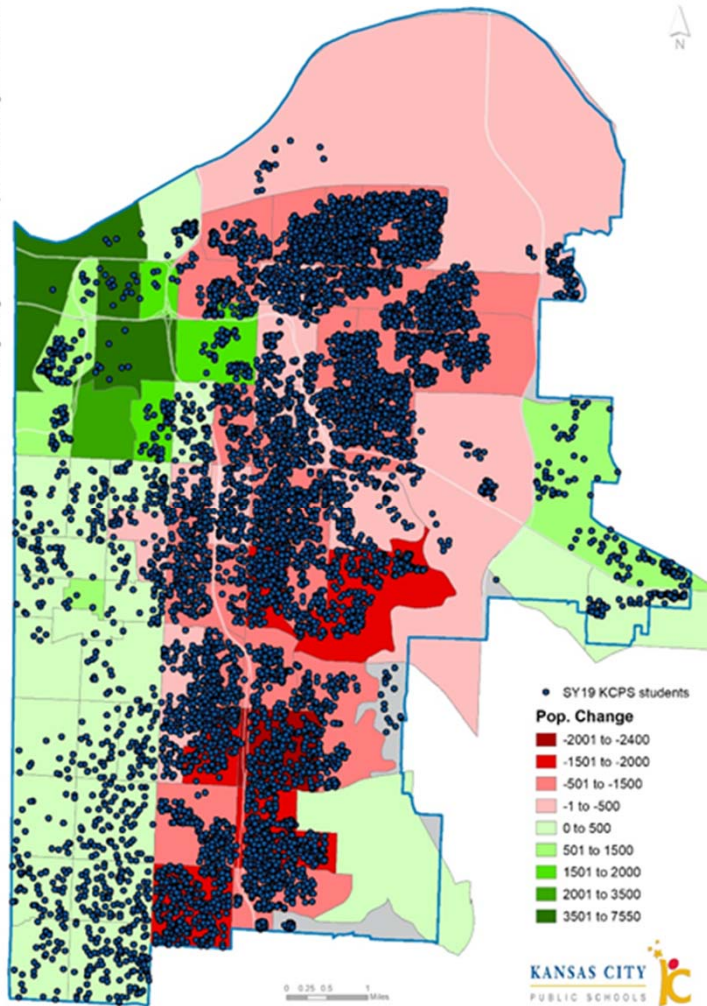


POPULATION SHIFTS TO SUBURBS IMPACT ENROLLMENT



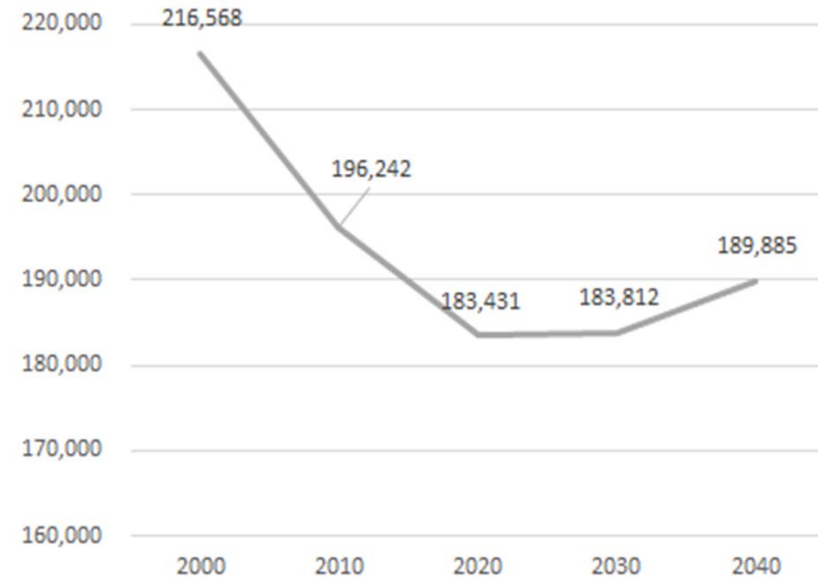
Kansas City Public Schools

Long-Range Forecast: Population Change 2010-2040

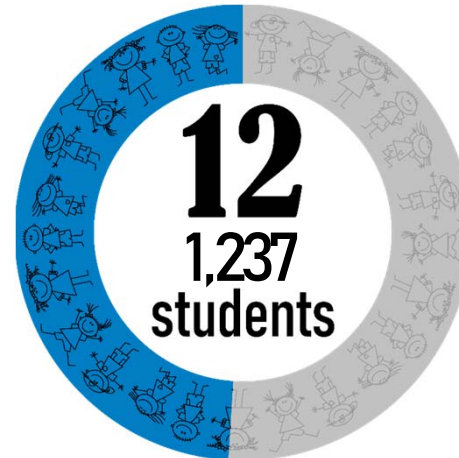
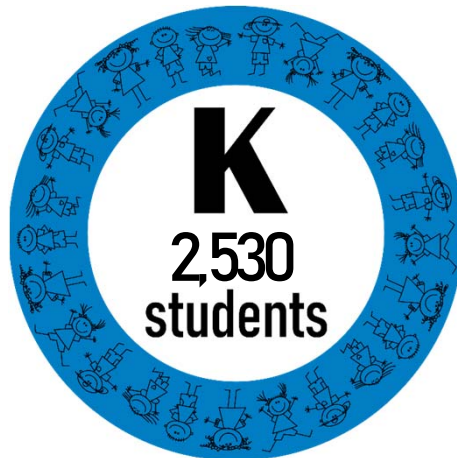


FUTURE DEMOGRAPHIC TRENDS

2040 Population Projection for KCPS Boundaries



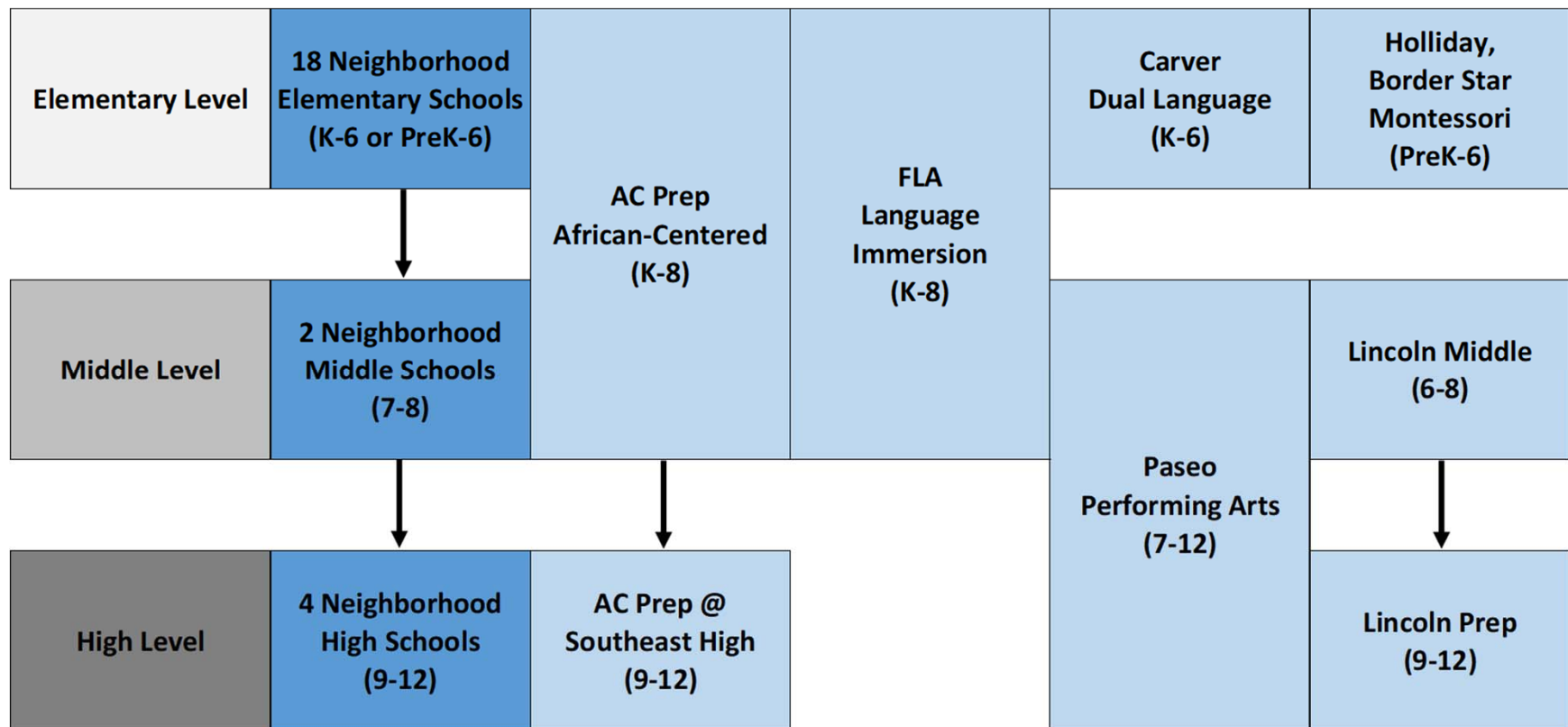
KCPS/CHARTER SYSTEM HAS RETENTION CHALLENGES



KCPS/Charter system serves **51% fewer** students at 12th grade than at Kindergarten

*Based upon SY19 K and 12th grade enrollment

KCPS HAS MANY SCHOOL OPTIONS, BUT LACKS CONSISTENT GRADE CONFIGURATIONS & ESTABLISHED FEEDER PATTERNS



KCPS/CHARTER SYSTEM COMPARISON

KCPS/CHARTER SYSTEM

26,742 students
SY2019

- 15 HIGH SCHOOL OPTIONS
- 21 MIDDLE SCHOOL OPTIONS
- 44 ELEMENTARY OPTIONS
- 4 CHARTER SPONSORS
- 21 CHARTER SCHOOL OPERATORS

SPRINGFIELD MO PUBLIC SCHOOLS

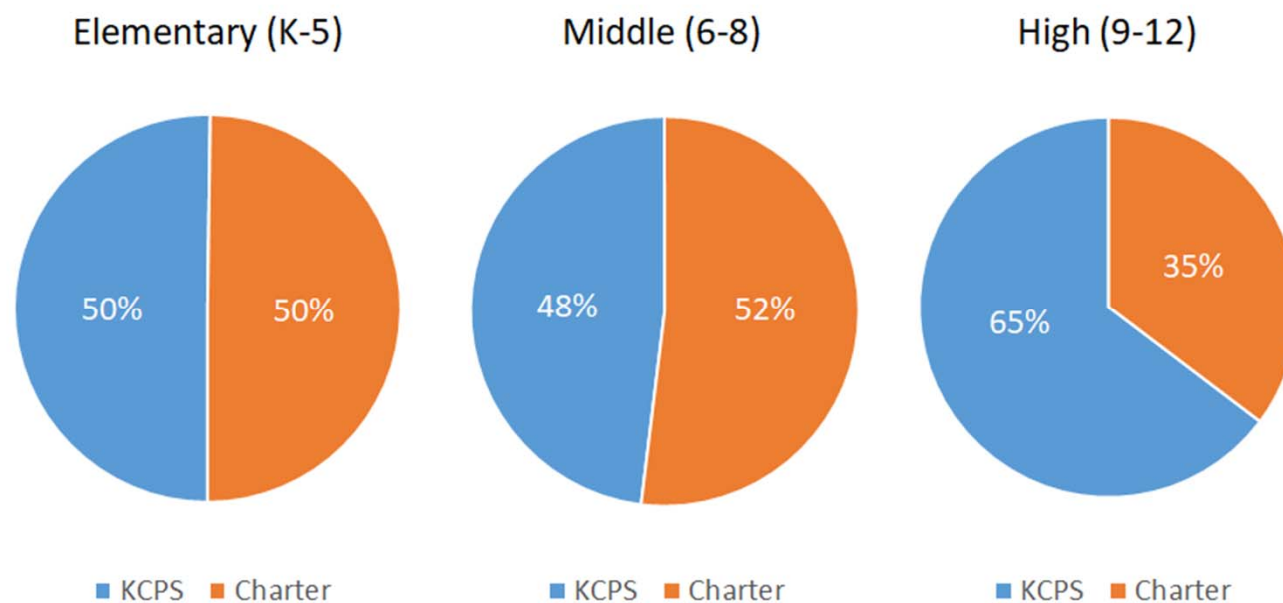
24,931 students
SY2019

- 5 HIGH SCHOOL OPTIONS
- 9 MIDDLE SCHOOL OPTIONS
- 36 ELEMENTARY OPTIONS



CHARTER SCHOOLS NOW SERVE MORE STUDENTS THAN KCPS AT ELEMENTARY & MIDDLE SCHOOL LEVEL

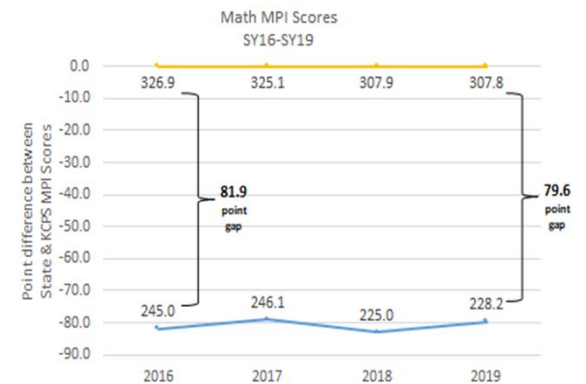
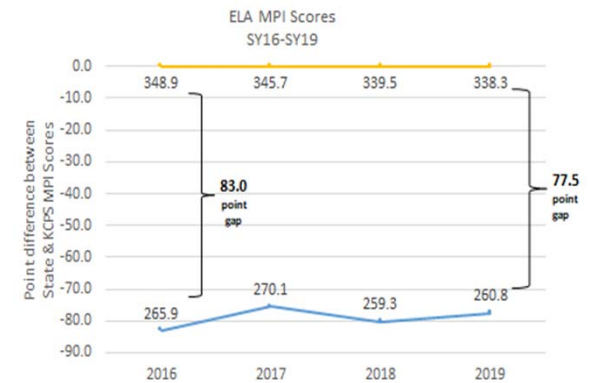
SY2019 Enrollment by Grade Levels



Academic Achievement

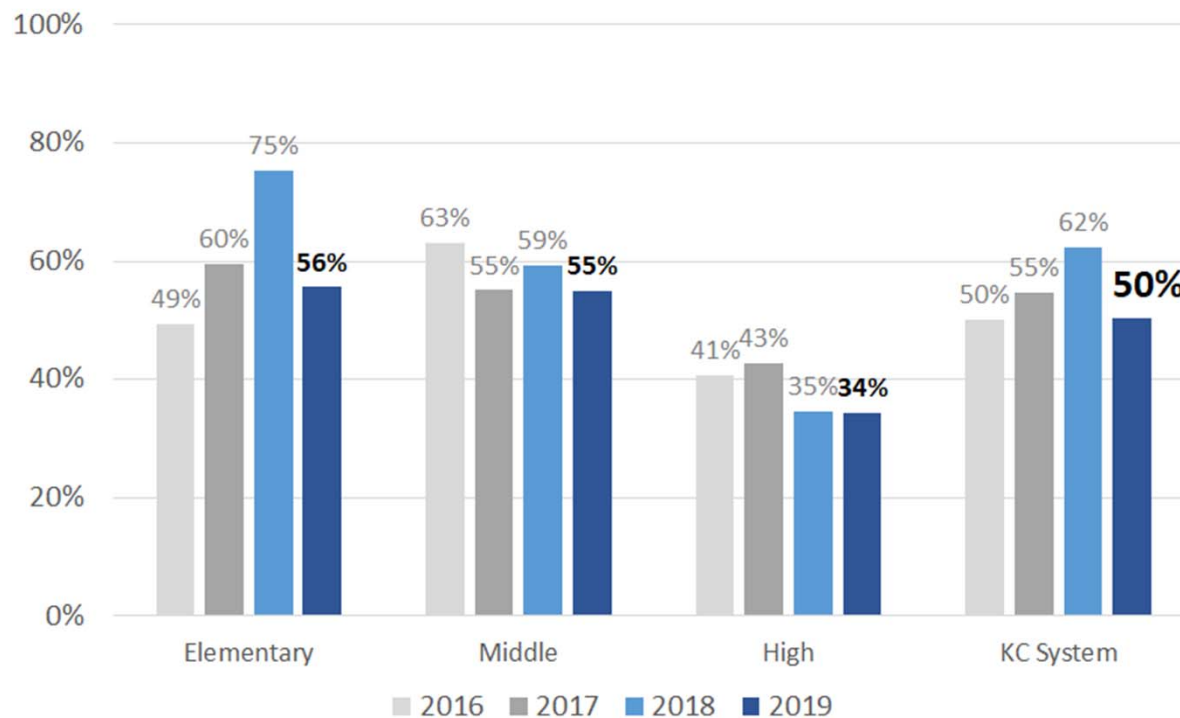
KCPS Lags Behind State of Missouri, but is Reducing the Gap in ELA & Math State Assessment Scores

- KCPS made gains on the State in ELA/Math in 2 of the last 3 years
- Since SY16, KCPS reduced the gap:
 - by 7% in ELA
 - by 3% in Math



Academic Achievement

KCPS & Charter Students Enrolled in Fully Accredited School
by Grade Level



Only 50% of
KCPS & Charter
Students
Attended a
Fully Accredited
School in SY19

Attendance & Mobility Impact Academic Achievement & Graduation Rates

KCPS high school students who stay at KCPS for 4 years have

20% Higher

Grad Rates

than KCPS students who are mobile



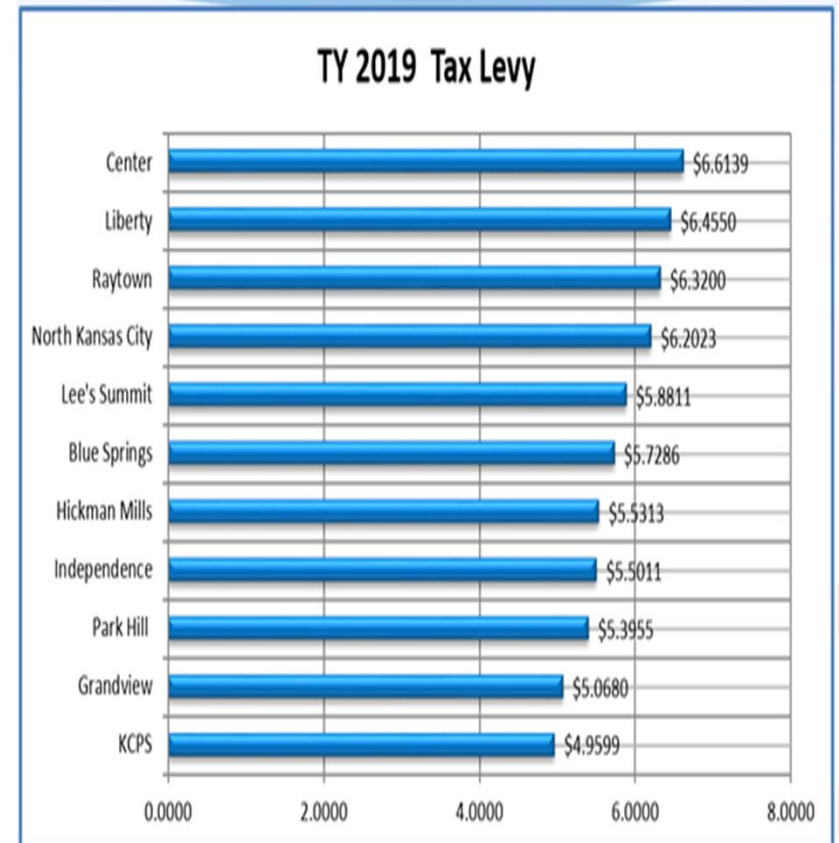
KCPS' mobility rate is **2 times higher** than the State

73% of KCPS students meet State attendance targets vs **87%** statewide



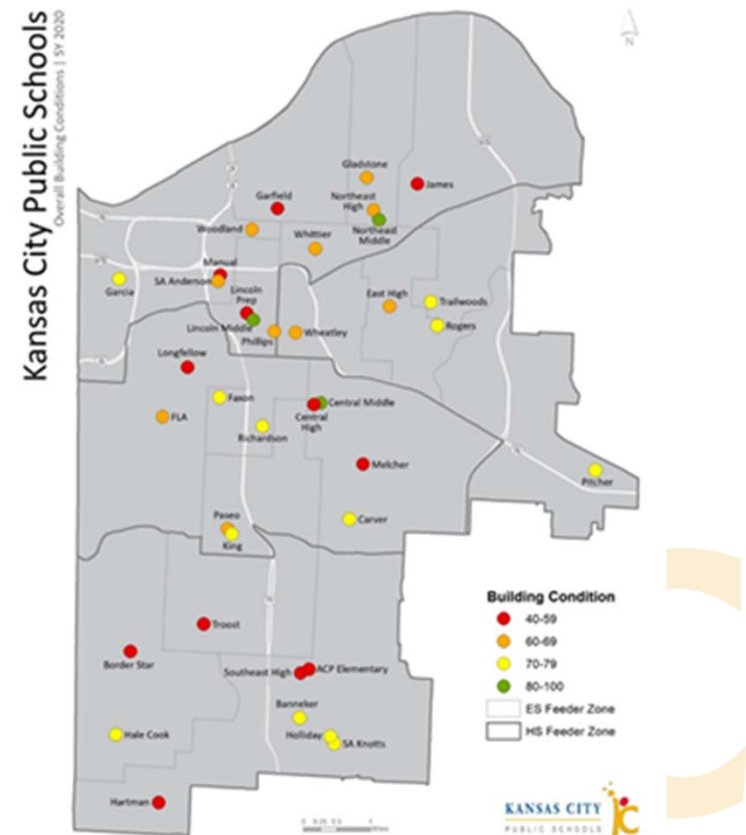
Funding Challenges

- KCPS voters have not approved a General Obligation Bond since the late 1960s
- The investment in our schools in the 1990s with desegregation funds are now nearly 40 years old and need replacement
- KCPS has lowest total levy in KC region at \$4.9599 and no debt service levy (used for capital improvements)
- KCPS/charters lost over \$70 million in property tax revenues from 2008-2018 during recession due to falling property values
- KCPS has no protection under Hancock Amendment (part of desegregation order) and could not adjust levy upward during recession to soften the impact (all other school districts have this ability)



Critical Capital Needs & Operating Inefficiencies

- KCPS has \$450 million in deferred maintenance/facility improvements
- All recent improvements have been done using operating budget, reducing money available for schools
- Due to our small enrollment per building and large number of buildings, KCPS spends a high amount per pupil on
 - Utilities & maintenance
 - Administration & security
 - Student transportation



Blueprint 2030 Assessment Areas

- Human Capital Recruitment/Retention
- Facility Needs & Utilization
- Operating (In)efficiencies & Impacts
- Market Research
- Student retention/recruitment (market research)
- Signature school/secondary school evaluations
- SY19 System Analysis update



Report out &
discussion at
next meeting

Communications Planning



Blueprint 2030 Engagement Series Timeline			
Project/Activity	Dates	Topic	Specific Date
Hanover Focus Groups	February 18-20	Targeted focus groups	
Blueprint 2030 Advisory Team (BAT) Meeting	Late February	Introduce and overview Blueprint 2030 and role of BAT	March 12, 5:30-7 p.m.
Board meeting	25-Mar	Hanover & Mass Insight findings	25-Mar
BAT Meeting	First of April	Key findings of assessment phase; identify priorities for BAT to inform goal-setting	
Board meeting	8-Apr	KCPS internal assessment findings	8-Apr
BAT Meeting	mid April	identify priorities for BAT to inform goal-setting	
Board meeting	22-Apr	Board meeting presentation	22-Apr
		Testing priorities and/or goal	

Blueprint 2030
Communications Plan
December 2019-Spring 2020

Internal audience: district leadership, principals, staff, students and Board of Education

External audience: Current/Prospective/Former KCPS Families, Families of School-Aged Children within KCPS boundaries, Business/Civic Organizations (KC Chamber, Civic Council, etc), Civic Organizations/Partners (More2, Urban League, Pre-K Providers, DAC, Education Foundation Board, etc) Elected officials (Mayor's office, city council, etc), SDAC, media, ...

Feedback

Closing the Feedback Loop

It is important to us that we release thoughts, feedback and input from these focus group and survey results. These staff and community feedback items are starting points that we will continue to refine based on our engagement efforts and further analysis with our partners.

Blueprint 2030 Engagement Series Exit Survey



[29]

Next steps

- Establish meeting schedule – [Doodle Poll Link](#)
- More data (review/discussion of Phase 1 assessments)
- 2030 Goal Setting
- Scenarios

Homework:

Review Market Research presentation/information from April 8 Board meeting



Small Group Discussions

- What stands out to you about the data? What are the most critical issues you believe we need to address as part of Blueprint 2030?
- How can you/your organization assist KCPS during Blueprint 2030? How can you be part of the message moving forward?

