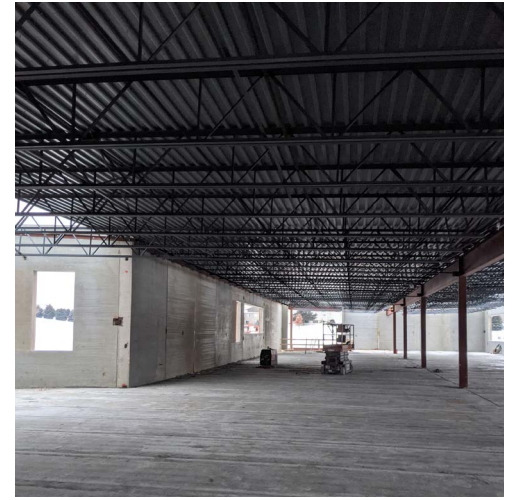


2019 ROCHESTER PUBLIC SCHOOLS OVERLAND ELEMENTARY



IN THE LOOP

Monday, March 2, 2020



CONSTRUCTION PROGRESS

WATCH LIVE

To watch construction of the new 2019 Rochester Public Schools Middle School and Elementary School in real-time, you can access the **OxBlue webcam link** here: <https://app.oxblue.com/open/knutson/RPS>

or **scan the QR code** with your mobile device camera.

THIS MONTH'S ACTIVITIES

- Interior concrete is being poured on lower level and upper level.
- Masonry and interior framing has begun. Each corridor has masonry walls half height and stud framing the remaining height.
- Installation of windows has started.
- Roofing has started.

Fun Fact:

Approximately 59,000 Square Feet of steel roof decking has been installed onsite which equals about 1,967 classroom white boards.

Photo Descriptions:

- Left - All 3 cranes onsite setting precast walls and structural steel
- Middle - Steel I-Beams creating the structure of the roof
- Right - Interior photo facing East in the kindergarten wing

