

FRANKLIN PIERCE CARDINALS 2021-2022 COURSE CATALOG

FRANKLIN PIERCE HIGH SCHOOL

PRINCIPAL:

RON HARTLEY

ASSISTANT PRINCIPALS:

BRIXEY MARZANO STACEY WRIGHT



Personal Pathway Preference

The Franklin Pierce School District strives to place students in academic classes that accelerate their learning and meet their academic needs. Based on board policy 2195 (Academic Acceleration Policy) students will be placed in the appropriate English and Math class based on: state test scores, teacher/counselor recommendation, and current grades. There is strong evidence that participation in advanced programs lead to success in college and the work force.

Pathway Selection: Students, counselors and parents are encouraged to use the career pathways, course descriptions, and graduation requirements in determining the individual course of study for each student. Counselors and advisors are prepared to assist students and parents with additional help, if needed.

Pathway Planning: Students will have the opportunity to work with a counselor and their Cardinal Connections Advisor to determine credits earned, review graduation requirements, and to develop or revise their post-secondary plan.

Personal Pathway Course Preference: Course preferences will be completed online through Cardinal Connections based on students' post-secondary plans and personal pathway goals. Counselors will guide the process to ensure all students are meeting graduation requirements according to Washington State. Families are encouraged to discuss post-secondary goals and personal pathway planning. Please contact your counselor for additional support.

Once Pathway courses have been scheduled, students will not be able to make changes to their schedule unless they fall into the categories below:

1. Incorrect placement level (i.e. student does not have the required prerequisite).
2. Student has already successfully completed class.
3. Student failed class & needs to retake for graduation.
4. Missing a class for graduation requirement.
5. Missing a class from schedule (i.e. fewer than 6 classes).

Post-Secondary Planning: The Three E's

Enlist:

Military- The military field of your choice has many valuable training programs for qualified high school graduates. Top-notch instructors and experiences are available for those students who are ready to make a long-term commitment (two or more years) and who are able and willing to adjust to a structured environment. Training varies from vocational skills-oriented programs to more college-oriented instruction and experiences. We recommend that you and your parents meet with the recruiter for an explanation of options before you make a final decision.

Enroll:

Technical: There are many technical (vocational) colleges that can provide specific training in a trade of your choice ranging from cosmetology, health services, industrial trades, technical jobs, business or service professions is available. Students in these programs find that they often can obtain marketable skills in a relatively short period of time.

2-Year: Earn an Associate degree and job skills from a variety of community colleges. There are a wide range of programs and extracurricular activities, and there are many community colleges throughout the state. The costs are far less than a 4-year college /university. You can learn the skills necessary to get a good job and enter into the workforce after two years or get your basic requirements out of the way and transfer to a 4-year college/university after two years.

4-Year: There are many college/universities to choose from both in State and out, with a wide range of programs, costs and extracurricular activities. Spend the time to visit each institution that you are interested in so that you can make a more informed decision as to the university of your choice. Be sure to prepare in high school by taking English, math, science, social studies, selected elective and CTE classes that will help you explore possible areas of further study.

Employment: Workforce

Apprenticeship: This type of experience will train you for a trade such as carpentry, plumbing, electric work, tile setting, etc., and pay you a working wage while you learn. Both Washington State Apprenticeship Council and the United States Employment Service can assist you here. Be sure that you prepare yourself, as the competition is tough. Courses such as English, math and CTE classes will be helpful to you.

Post-Secondary Planning Options

Graduation Requirements by Credit

Below are the credit requirements to graduate according to Washington State guidelines.

Course Requirements	24 Credits over 4 years
English Language Arts	4.0
Mathematics	3.0
Science	3.0
Social Studies	3.0
<ul style="list-style-type: none"> • WA State History (*) • World History (1.0) • American History (1.0) • Civics (0.5) • CWP (0.5) • Ethnic Studies (0.5) 	
Arts	2.0
Health and Fitness	2.0
<ul style="list-style-type: none"> • Physical Ed. (1.5) • Health (0.5) 	
Career and Tech Ed.	1.0
Electives	4.0
World Language or Personalized Pathway Requirement	2.0
Total Credits Needed	24

(*) = Washington State History is a required course for graduation. If taken in 7th/8th grade and passed, this meets the State requirement. Algebra and Geometry grades from middle school will be added to the transcript automatically.

Franklin Pierce High School

Graduation Requirement Check Sheet



Name: _____

Career Pathway: _____

Credits required to graduate: 24

Graduation Year: 2022 and Beyond

IEP / 504

Example:

Student currently in class:

Health

Completed and Earned Credit

Month →

01	21

← Year

Language Arts (ENG): 4 credits

9 th Grade	9 th Grade	10 th Grade	10 th Grade	11 th Grade	11 th Grade	12 th Grade	12 th Grade

Social Studies (SST): 3.5 credits

WSH	World Hist	Amer Hist	Amer Hist	CWIP Ethnic Studies	Civics	

Mathematics (MTH): 3 credits*

--	--	--	--	--	--

*If high school courses were taken in middle school, they can be included on your high school credit check/transcript. See Counselor for further information.

Science (SCI): 3 credits

Biology	Biology	Physical Sci.	Physical Sci.		

College Bound _____
IEP Case Mgr. _____
504 Plan _____

Physical Education (PED): 1.5 credits

Intro to PE		

Health (HTH): .5 credits

Health/ Bio Med. Eval. Yr.

State Tests

☐ SBA ELA ☐ SBA Math ☐ WCAS Sci.

Fine & Performing Arts FNA/ATC): 2.0 credits

--	--	--	--

Portfolio 1.0 credits (.25 per year)

9th ___ 10th ___ 11th ___ 12th ___
☐ Requirements
☐ Presentation

CTE Career & Technical Education Electives: 1.0 credits

--	--

Course Codes Ex.:
ATC, BUS, CIE, FCS,
FNA, MDC, SCI., TEC
WRL (ASL only)

World Language or Personalized Pathway (WRL) 2.0

--	--	--	--

Electives (ELE or any credits above the graduation requirement) 4.0

--	--	--	--	--	--	--	--

General Information

Athletic Eligibility: A student must have passed five (5) academic courses (out of a 6-period day) from the previous term and be passing in five (5) academic courses during the sports season to be eligible to participate in athletics. Refer to athletic code (<http://www.wiaa.com/conDocs/Con1782/Eligibility%208-24.pdf>) for additional athletic eligibility requirements and NCAA eligibility requirements (if playing sports at the college level).

Pathway Course Preference: Student courses are selected based off student post-secondary plans and State graduation requirements. Using the credit check as a guide, students will work with their counselor to determine which course selections work best with each student's pathway and graduation goals. Students will be asked to declare a post-secondary pathway each spring and will make course preference requests based on the three E's (Enrollment, Enlistment, Employment).

Changing Classes: A student must remain in the registered class until an official change has been made through counselors and the administration. Changes must meet State graduation and personal pathway requirements.

Daily Schedule: Students are expected to select six (6) classes each semester according to their pathway in order to obtain the 24 credits required for Washington State Graduation. All students are assigned to a Cardinal Connection class/advisor in addition to their daily classes.

Credits: The State Board of Education has established the definition of a credit as a full year of instruction in a course. A one-semester course receives one-half (0.5) credit upon completion. The total number of credits required for graduation is 24 credits in specific content areas.

Grading System: Standards Based Grading The State Board of Education has established the following grades and corresponding points to be used by all high schools in the State of Washington:

A = 4.0	B+ = 3.3	C+ = 2.3	F = 0.0 (see below)
A- = 3.7	B = 3.0	C = 2.0	P = Pass (a credit but not figured into GPA)
	B- = 2.7	C- = 1.7	

Franklin Pierce School District utilizes Standards Based Grading, wherein students' proficiency is assessed in course specific standards. Students receive, 1=Below Basic, 2=Basic, 3=Proficient, 4=Advanced. Grades are based, in large part, on summative assessments.

'NC' Grades (No Credit Earned): Students who receive a NC at the end of the semester will need to retake the entire course for credit.

"I" Grades (No Credit Earned): Students who receive an I grade have the opportunity to make up that course with their teacher.

High School and Beyond Plan:

Portfolio: Completion of a high school and beyond plan is required for graduation in the state of Washington and for the Franklin Pierce School District including completion and presentation of the portfolio. Students are placed in a Cardinal Connections course where portfolios are the main focus of this class. Students can earn .25 credits annually upon successful completion of the portfolio. Grades for this course are Pass/Fail. The portfolio consists of a culmination of student work and a post-secondary plan. It is utilized in our student-led conferences and presented at Senior Presentations in the Spring.

Cardinal Connections: Is the advisory class that was developed to assist students with the development of a high school and beyond plan over the course of four years. Each student is assigned an advisory teacher and meets weekly to complete tasks related to the development of students' portfolio. In 2012 the district approved a one-quarter (.25) yearly credit for advisory upon successful completion of Cardinal Connections. Yearly grades for Cardinal Connections will be P (pass) and F (fail).

Semester: Franklin Pierce High School operates on a semester schedule. Students take a given schedule of classes for a period of 18 weeks. If a student successfully completes the class requirements, one-half (0.5) credit is earned. There are two semesters in a year.

Credit Options

Summer School: To be determined by district in Spring 2021.

APEX: Is an online credit recovery curriculum that provides schools with a flexible way to help students pass courses and earn high school credits needed to graduate. Our credit recovery courses are offered to juniors and seniors only for previously failed courses. Courses must be assigned by the student's counselor.

Correspondence Courses: Correspondence is used for remedial purposes. Courses offered through accredited institutions may be approved with permission of the student's counselor or an administrator. Up to 1.5 credits may be earned, see your high school counselor for more information.

CTE Dual Credit (formerly Tech Prep) courses offer students an opportunity to earn Community / Technical College credit while attending high school classes. Career and Technical Education (CTE) Dual Credit classes are taught at the high school or skills center and integrate academics with technical skills to help prepare students for advanced education and careers related to professional-technical occupations. High school students who complete selected high school courses with a grade of 'C' (2.0) or better can earn Community / Technical College credit. After June 30th once you have completed the course contact the PC3 office at 253-583-8803 for transcription of your CTE Dual credits. Contact your high school Career and Technical Education (CTE) teacher with questions about earning credit. More information about CTE Dual Credit can be found online at Pierce County Careers Connection www.pc3connect.com or Washington State Board for Community and Technical Colleges www.sbctc.edu/colleges-staff/programs-services/cte-dual-credit.

Advanced Placement (AP) Credit by Exam: Students who have passed the state exams will be automatically enrolled in advanced placement courses. Students will have the opportunity to gain college credit if they earn a qualifying score on the corresponding AP exam. AP courses are rigorous and require a high degree of dedication from students, including the commitment to spend an average of three to ten hours per week in study outside of the classroom. AP courses on a student's transcript are evaluated by universities as highly significant. They indicate the student has been willing to take high-level, challenging courses and is capable of functioning successfully with college level materials and expectations.

Students earn regular high school credit upon successful completion of the course and then have the opportunity to earn college credit through examinations each May. The examinations are administered through Franklin Pierce High School and are developed nationally by the Educational Testing Service. AP examinations are graded on a scale of 1 (minimum) to 5 (maximum). University credit is generally granted for test scores of 3 and above however, each university has their own standard. However, even a score of 1 or 2 enhances the opportunity for scholarships and university admission. For more information on the AP program go to www.collegeboard.com/ap.

Important AP Information: Students enrolling in three or more concurrent AP classes must have prior approval from their counselor. If a student enrolls in an AP course, they **will be required** to take the AP examination. Exam fees will be covered by Franklin Pierce District. Students who enroll in year-long AP courses are expected to remain in those courses for the entire year.

For a complete list of AP courses offered, please see course offerings page.

Pierce County Skills Center (PCSC): The Pierce County Skills Center will serve high school **juniors and seniors** under the age of 21 and is open to 10 school districts in this area. PCSC focuses on hands-on learning and offers a variety of courses to choose from. Each course is individually tailored to give student the necessary skills to advance in very particular areas, while also giving the opportunity to earn high school and even college credit in selected areas. FPHS students will attend 3 periods at FPHS and then 3 periods at the PCSC. To participate in PCSC students must be on track with State graduation requirements, grade level portfolio requirements and must have met state testing requirements and should have good attendance (95% or higher). A list of course descriptions can be found on pages 55-56. For more information please see your counselor or go to www.pcskillscenter.org.

College Course Completion: Running Start allows eligible **juniors and seniors** to enroll tuition free in courses at local community colleges or career/technical schools. The course work completed can earn both college and Franklin Pierce High School credit.

Running Start enrollment is limited to classes numbered 100 and above in both academic and career/technical areas. Students will receive high school credit towards graduation as well as college credit towards a transfer or career/technical degree.

The Running Start program is limited to juniors and seniors who can demonstrate their ability to succeed in college level courses through the Community College Assessments and Placement Program in combination with their high school records. To enroll in any non-math course, students must place into college level reading and English 101. To enroll in a math course, or any course that requires math as a prerequisite, students must place into college level reading and Math 141.

We partner with Tacoma Community College, Pierce College, and Clover Park Technical College. The tuition will be paid for by the school district up to 15 credits. Books, supplies, other college fees and transportation are the responsibility of the student.

Graduation requirements for completing a high school diploma are established by Franklin Pierce High School, and students must consult their high school counselor to identify how community college courses will apply towards graduation. If students choose to enroll part time in Running Start

classes and part time at Franklin Pierce High School, they will need to plan their Running Start classes around their Franklin Pierce High School classes.

Home School Courses: Any credit received for work outside of the regular school program requires the superintendent of the school district (or a designee) to approve the course work. Home-schooled students are encouraged to participate in activities and athletics at Franklin Pierce High School. See your high school counselor for more information.

Pathways of Study

Agriculture, Food & Natural Resources: Production, processing, marketing, distribution, financing, and development of agricultural commodities and resources including food, fiber, wood products, natural resources, horticulture, and other plant and animal products/resources.

Architecture & Construction: Designing, planning, managing, building and maintaining structures such as buildings, homes and bridges, or machinery.

Arts, A/V Technology & Communications: Designing, producing, exhibiting, performing, writing, and publishing multimedia content including visual and performing arts and design, journalism, and entertainment services.

Business Management & Administration: Planning, organizing, directing and evaluating business functions essential to efficient and productive business operations.

Education & Training: Planning, managing and providing education and training services, and related learning support services.

Finance: Planning, services for financial and investment planning, banking, insurance, and business financial management.

Government & Public Administration: Planning and performing government functions at the local, state and federal levels, including governance, national security, foreign service, planning, revenue and taxation, and regulations.

Health Science: Planning, managing, and providing therapeutic services, diagnostic services, health informatics, support services, and biotechnology research and development.

Hospitality & Tourism: The management, marketing and operations of restaurants and other food services, lodging, attractions, recreation events and travel related services.

Human Services: Preparing individuals for employment in career pathways that relate to families and human needs such as counseling and mental health services, family and community services, personal care, and consumer services.

Information Technology: Building linkages in IT occupations for entry level, technical and professional careers related to the design, development, support and management of hardware, software, multimedia and systems integration services.

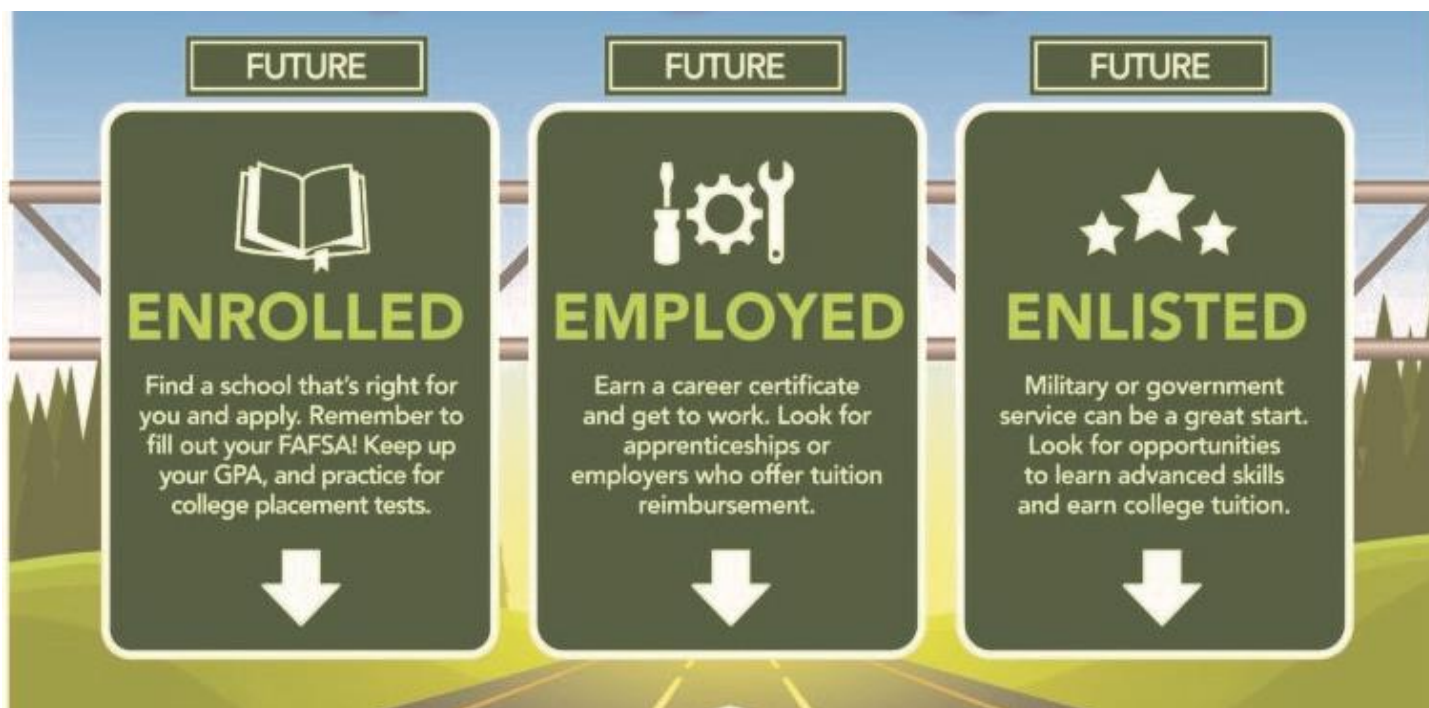
Law, Public Safety, Corrections & Security: Planning, managing, and providing legal, public safety, protective services and homeland security, including professional and technical support services.

Manufacturing: Planning, managing and performing the processing of materials into intermediate or final products and related professional and technical support activities such as production planning and control, maintenance and manufacturing/process engineering.

Marketing: Planning, managing and performing marketing activities to reach organizational objectives.

Science, Technology, Engineering & Mathematics: Planning, managing and providing scientific research and professional and technical services (e.g., physical science, social science, engineering) including laboratory and testing services, and research and development services.

Transportation, Distribution & Logistics: Planning, management, and movement of people, materials, and goods by road, pipeline, air, rail and water and related professional support services such as transportation infrastructure planning and management, logistics services, mobile equipment and facility maintenance.



The Three Es

Although a student's "E" may change over the next four years, all students are asked to select and review their E each year. Each student's E will help students align their course choices with their pathway.

Enrolled is defined as attending a 2 year, Technical or 4 Year college after high school.

Employed is defined as a student seeking a job-not planning on going to any type of schooling after high school or.

Enlisting is defined as enlisting into any branch of the Military.

Pathways of Study

The next two pages show the Pathways of Study as outlined by the State of Washington. Each pathway of study listed has a variety of career choices beneath.

Under Perkins V, local education agencies and postsecondary institutions should offer more than one program of study that: A) incorporates challenging State academic standards; B) addresses both academic and technical knowledge and skills, including employability skills; C) is aligned with the needs of industries in the economy of the State, region, Tribal community, or local area; D) progresses in specificity (beginning with all aspects of an industry or career cluster and leading to more occupation-specific instruction); E) has multiple entry and exit points that incorporate credentialing; and F) culminates in the attainment of a recognized postsecondary credential.

The resources below are to support Program of Study.

Pathways of Study

Pathways of Study		
Agriculture Sciences	Business & Marketing	Family & Consumer Sciences
Agriculture, Food, & Natural Resources:	Business Management & Administration; Finance Information & Technology; Marketing; Hospitality & Tourism	Education & Training; Human Services
Agriculture, Food, & Natural Resources	Business Management	Education & training
Animal Systems • Agribusiness Systems • Environmental Service Systems • Food Products & Processing Systems • Natural Resources Systems • Plant Systems • Power, Structural, and Technical Systems	Accounting • Business Information Management • Human Resources Management • Operations Management • Administrative Support	Teaching & Training • Administration & Administrative Support • Professional Support Services
	Finance:	Human Services:
	Banking Services • Business Finance • Securities & Investments • Insurance	Consumer Services • Counseling & Mental Health Services • Early Childhood Development & Services • Family & Community Services • Personal Care Services
	Information & Technology:	
	Information Support & Services • Web & Digital Communications • Network Systems • Programming & Software Development	
	Marketing:	
	Management & Research • Marketing Communications • Marketing Management • Merchandising • Professional Sales	
	Hospitality & Tourism:	
	Lodging • Recreation, Amusement, & Attractions • Restaurants & Food & Beverage Services • Travel & Tourism	

Continued

Health Sciences		Skilled & Technical Sciences	STEM	Government & Public Administration
Health Science		Arts, A/V Technology, & Communications; Architecture & Construction;	Science, Technology, Engineering & Mathematics:	Law, Public Safety, Corrections & Security; Government & Public Administration
Health Science		Arts, A/V Technology	Science, Technology, Engineering & Mathematics:	Law, Public Safety, Corrections & Security
Therapeutic Services • Support Services • Biotechnology Research & Development • Diagnostic Services • Health Informatics		Visual Arts • Telecommunications • Printing Technology • Audio & Video Technology & Film • Journalism & Broadcasting • Performing Arts	Engineering & Technology • Science & Math	Law Enforcement Services • Emergency & Fire Management • Security & Protective Services • Correction Services • Legal Services
		Architecture & Construction		Government & Public Administration:
		Construction • Design & Pre-Construction • Maintenance & Operations		Governance • National Security • Foreign Service • Planning • Public Management & Administration • Revenue & Taxation • Regulation
		Manufacturing		
		Production • Maintenance, Installation & Repair • Manufacturing Production Process Development • Health, Safety, & Environmental Assurance • Logistics & Inventory Control • Quality Assurance • Health		
		Transportation, Distribution, & Logistics		
		Sales & Services • Health, Safety & Environmental Management • Logistics Planning & Management Services • Facility & Mobile Equipment Maintenance • Planning, Management, & Regulation • Warehousing & Distribution Center Operations • Transportation Systems & Infrastructure • Transportation Operations		

AT-A-GLANCE 2021 - 2022

Language Arts

Course	Page #	Graduation Requirement	Grade Level	Pathway
Freshman English 1 & 2	21	ELA	9	Graduation Requirement
Freshman Lang Art 1 & 2	21	ELA	9	IEP Pathway Determined
ADV Freshman English 1 & 2	21	ELA	9	Pathway Determined
Sophomore English 1 & 2	21	ELA	10	Graduation Requirement
Sophomore Lang Art 1 & 2	21	ELA	10	IEP Pathway Determined
ADV Sophomore English 1 & 2	21	ELA	10	Pathway Determined
Junior English 1 & 2	22	ELA	11	Graduation Requirement
Junior Lang Art 1 & 2	21	ELA	11	IEP Pathway Determined
AP English Language and Composition 1 & 2	22	ELA	11	Pathway Determined
Bridge to College English 1 & 2	22	ELA	12	Graduation Requirement
AP English Literature and Composition 1 & 2	22	ELA	12	Pathway Determined
Reading Lab 1 & 2	22	ELA	9 – 10	IEP Pathway Determined
Reading Lab 3 & 4	22	ELA	11 – 12	IEP Pathway Determined
ELL Beginning 1 & 2	23	Elective	9 – 12	Pathway Determined

Mathematics

Course	Page #	Graduation Requirement	Grade Level	Pathway
Aerospace Manufacturing 1 & 2	27	Mathematics (3 rd year), CTE	10 – 12	Pathway Determined
Aerospace Manufacturing Advanced 3 & 4	27	Mathematics (3 rd year), CTE	11 – 12	Pathway Determined
ADV Algebra 3 & 4	25	Mathematics	9 – 10	Pathway Determined
ADV Geometry 1 & 2	25	Mathematics	9	Pathway Determined
ADV Pre-Calculus 1 & 2 (UW in the High School)	26	Mathematics	10 – 11	Pathway Determined
Algebra 1 & 2	25	Mathematics	10 – 11	Graduation Requirement
Algebra 3 & 4	25	Mathematics	10 – 12	Graduation Requirement
AP Calculus AB 1 & 2	26	Mathematics	11 – 12	Pathway Determined
AP Calculus BC 1 & 2	26	Mathematics	12	Pathway Determined
AP Computer Science 1 & 2	52	Mathematics (3 rd Year), CTE	10-12	Pathway Determined
Basic Math 1 & 2		Mathematics	9 – 12	IEP Pathway Determined
Bridge to College Mathematics 1 & 2	26	Mathematics	12	Pathway Determined
Consumer Math 1 & 2	25	Mathematics	11 – 12	Pathway Determined
Financial Literacy 1 & 2	27	Mathematics (3 rd Year), CTE	9 – 12	Pathway Determined
Geometry 1 & 2	25	Mathematics	10 – 12	Graduation Requirement
Introduction to Engineering Design 1 & 2	27	Mathematics (3 rd Year), CTE	9 – 12	Pathway Determined
Introduction to Computer Science 1 & 2	27	Mathematics (3 rd Year), CTE	9 – 12	Pathway Determined
Pre-Algebra 1 & 2		Mathematics	9 – 12	IEP Pathway Determined
Pre-Algebra 3 & 4		Mathematics	9 – 12	IEP Pathway Determined
Pre-Calculus 1 & 2	26	Mathematics	10 – 12	Pathway Determined
Statistics 1 & 2	26	Mathematics	11 – 12	Pathway Determined

Science

Course	Page #	Graduation Requirement	Grade Level	Pathway
ADV Chemistry 1 & 2	30	Science (Lab)	11	Pathway Determined
ADV Physical Science 1 & 2	29	Science (Lab)	9	Pathway Determined
AP Biology 1 & 2	29	Science (Lab)	10 – 12	Pathway Determined
AP Chemistry 1 & 2	30	Science (Lab)	11-12	Pathway Determined
AP Environmental Science 1 & 2	29	Science (Lab)	10-12	Pathway Determined
AP Physics 1 & 2	30	Science (Lab)	11 – 12	Pathway Determined
Biology 1 & 2	28	Science (Lab)	9	Graduation Requirement
Biomedical Innovation 1 & 2	31	Science (Lab), CTE	11 – 12	Pathway Determined
Chemistry 1 & 2	29	Science (Lab)	10 – 12	Pathway Determined
Eco System Design 1 & 2	30	Science (Biology or Lab Science), CTE	9 – 12	Pathway Determined
Forensic Science 1 & 2	31	Science (Lab)	10 – 12	Pathway Determined
Human Body Systems (HBS) 1 & 2	31	Science (Lab), CTE	10 – 12	Pathway Determined
Medical Interventions 1 & 2	31	Science (Lab), CTE	11 – 12	Pathway Determined
Physical Science 1 & 2	29	Science (Lab)	10	Graduation Requirement
Principles of Biomedical Science 1 & 2	30	Science (Lab), Health, CTE	9 – 12	Pathway Determined

Social Studies

Course	Page #	Graduation Requirement	Grade Level	Pathway
AP Human Geography 1 & 2	32	Social Studies	9 – 12	Pathway Determined
AP US Government and Politics 1 & 2	34	Social Studies	12	Pathway Determined
AP Psychology	34	Social Studies	11-12	Pathway Determined
AP US History 1 & 2	33	Social Studies	11	Pathway Determined
AP World History 1 & 2	33	Social Studies	10	Pathway Determined
Civics	33	Social Studies	12	Graduation Requirement
Contemporary World Problems (CWP)	33	Social Studies	12	Pathway Determined
US History 1 & 2	33	Social Studies	11	Graduation Requirement
Washington State History	34	Social Studies	11 – 12	Graduation Requirement
World History 1 & 2	32	Social Studies	10	Graduation Requirement
Ethnic Studies	33	Social Studies	9 – 12	Pathway Determined

Health & Fitness

Course	Page #	Graduation Requirement	Grade Level	Pathway
Club Fitness	37	Health & Fitness	9 – 12	Pathway Determined
Family Health	37	Health, CTE	9 - 12	Graduation Requirement
Fitness Specialist 1 & 2	38	Physical Education, CTE	11 – 12	Pathway Determined
Individual and Dual Sports	37	Health & Fitness	9 – 12	Pathway Determined
Intro to PE	37	Physical Education	9	Graduation Requirement
Strength Training	38	Health & Fitness	9 – 12	Pathway Determined
Team Sports	38	Health & Fitness	9 – 12	Pathway Determined
Walking Fitness	38	Health & Fitness	9 – 12	Pathway Determined
Sports Medicine Advanced 3 & 4	39	CTE	11 – 12	Pathway Determined
Sports Medicine Beginning 1 & 2	38	CTE	10 – 12	Pathway Determined
Principles of Biomedical Science (PBS) 1 & 2	39	Science (Lab), Health, CTE	9 – 12	Pathway Determined

Arts

Course	Page #	Graduation Requirement	Grade Level	Pathway
Advanced Choir 1 & 2	40	Arts	10 – 12	Pathway Determined
Bach to Tupac	41	Arts	9 – 12	Pathway Determined
Beginning Guitar	41	Arts	9-12	Pathway Determined
Concert Band 1 & 2	40	Arts	9 – 12	Pathway Determined
Digital Photography Beginning	43	Arts, CTE	9 – 12	Pathway Determined
Drumline Adv.	41	Arts	9 – 12	Pathway Determined
Glass Art Advanced	43	Arts, CTE	9 – 12	Pathway Determined
Glass Art Beginning	42	Arts, CTE	9 – 12	Pathway Determined
Graphic Design	42	Arts, CTE	9 – 12	Pathway Determined
Jazz Ensemble 1 & 2	41	Arts	9 – 12	Pathway Determined
Pottery	43	Arts, CTE	9 – 12	Pathway Determined
Beginning Choir 1 & 2	40	Arts	9 – 12	Pathway Determined
Intermediate Choir 1 & 2	40	Arts	9 – 12	Pathway Determined
Symphonic Band 1 & 2	41	Arts	10 – 12	Pathway Determined
Technology Exploration 1 & 2	42	Arts, CTE	9 – 12	Pathway Determined
Advanced Choir 1 & 2	40	Arts	9 – 12	Pathway Determined
Video Editing 1 & 2	43	Arts, CTE	9 – 12	Pathway Determined
Visual Art Design	42	Arts	10 – 12	Pathway Determined
World Music Ensemble	41	Arts	9- 12	Pathway Determined
Yearbook 1 & 2	43	Arts, CTE	10 – 12	Pathway Determined

Electives

Course	Page #	Graduation Requirement	Grade Level	Pathway
AP Human Geography 1 & 2	44	Elective	9 – 12	Pathway Determined
AVID Freshman 1 & 2	44	Elective	9	Pathway Determined
AVID Junior 1 & 2	44	Elective	11	Pathway Determined
AVID Senior 1 & 2	45	Elective	12	Pathway Determined
AVID Sophomore 1 & 2	44	Elective	10	Pathway Determined
Leadership Advanced 1 & 2	45	Elective	10 – 12	Pathway Determined
Learning Strategies 1 & 2	45	Elective	9	Pathway Determined
Sociology	45	Elective	10 – 12	Pathway Determined
Tools for Success 1 & 2	45	Elective	10	Pathway Determined

World Language

Course	Page #	Graduation Requirement	Grade Level	Pathway
American Sign Language (ASL) 1 & 2	46	World Language, CTE	9 – 12	Pathway Determined
American Sign Language (ASL) 3 & 4	46	World Language, CTE	10 – 12	Pathway Determined
Spanish 1 & 2	47	World Language	9 – 12	Pathway Determined
Spanish 3 & 4	47	World Language	10 – 12	Pathway Determined
Spanish 5 & 6	47	World Language	11 – 12	Pathway Determined
Spanish Native Speaker 1 & 2	47	World Language	9 – 12	Pathway Determined
AP Spanish Language 1 & 2	44	World Language	11-12	Pathway Determined

CTE Courses

Course	Page #	Graduation Requirement	Grade Level	Pathway
Aerospace Manufacturing 1 & 2	55	Mathematics (3 rd Year), CTE	10 – 12	Pathway Determined
Aerospace Manufacturing 3 & 4	55	Mathematics (3 rd Year), CTE	11 – 12	Pathway Determined
American Sign Language (ASL) 1 & 2	51	CTE, World Language	9 – 12	Pathway Determined
American Sign Language (ASL) 3 & 4	51	CTE, World Language	10 – 12	Pathway Determined
AP Computer Science 1 & 2		CTE	10-12	Pathway Determined
Biomedical Innovation 1 & 2	53	Science (Lab), CTE	11 – 12	Pathway Determined
Business Management/Entrepreneurship 1 & 2	50	CTE	9 – 12	Pathway Determined
Culinary Advanced	54	CTE	10 – 12	Pathway Determined
Culinary Beginning	54	CTE	9 – 12	Pathway Determined
Digital Photography Beginning	49	Arts, CTE	9 – 12	Pathway Determined
Early Childhood Education	54	CTE	10 – 12	Pathway Determined
Eco System Design 1 & 2	48	Science (Biology or Lab Science), CTE	9 – 12	Pathway Determined
Family Health	52	Health, CTE	9 - 12	Graduation Requirement
Financial Literacy 1 & 2	50	Mathematics (3 rd Year), CTE	9 – 12	Pathway Determined
Fitness Specialist 1 & 2	53	Health & Fitness (PE), CTE	11 – 12	Pathway Determined
Glass Art Advanced	49	Arts, CTE	10 – 12	Pathway Determined
Glass Art Beginning	48	Arts, CTE	9 – 12	Pathway Determined
Graphic Design	48	Arts, CTE	9 – 12	Pathway Determined
Human Body Systems (HBS) 1 & 2	52	Science (Lab), CTE	10 – 12	Pathway Determined
Introduction to Computer Science 1 & 2	54	Mathematics (3 rd Year), CTE	9 – 12	Pathway Determined
Introduction to Engineering Design 1 & 2	55	Mathematics (Algebra Year 1), CTE	9 – 12	Pathway Determined
Medical Interventions 1 & 2	52	Science (Lab), CTE	11 – 12	Pathway Determined

CTE Courses continued....

Course	Page #	Graduation Requirement	Grade Level	1st Semester Course No.
Pottery	49	Art, CTE	9 – 12	Pathway Determined
Principles of Biomedical Science (PBS) 1 & 2	52	Science (Lab), Health, CTE	9 – 12	Pathway Determined
Robotics Technology	55	CTE	9 – 12	Pathway Determined
Sports Medicine Beginning 1 & 2	53	Physical Education, CTE	10 – 12	Pathway Determined
Sports Medicine Advanced 3 & 4	53	Physical Education, CTE	11 – 12	Pathway Determined
Teaching Academy 1 & 2	51	CTE	10 – 12	Pathway Determined
Technology Exploration 1 & 2	54	Arts, CTE	9 – 12	Pathway Determined
Video Editing 1 & 2	49	Arts, CTE	9 – 12	Pathway Determined
Yearbook 1 & 2	49	Arts, CTE	10 – 12	Pathway Determined

Language Arts

General Information

1. All students are required to earn **eight semesters** of English Language Arts (ELA) credit.
2. Freshman, sophomore, junior and senior English are full-year, required English Language Arts courses.
3. Students may not repeat any course for additional credit.
4. College-bound courses, such as ADV and AP require a significant amount of reading and writing.
5. All eight language arts semester requirements may be earned in Special Education.
6. Juniors and seniors may take English elective courses. These courses do not meet English Language Arts graduation requirements but do meet elective graduation requirements. See the Electives section of the course catalog for more information on these courses.

English Course Placement: Graduation Cut Score = 2548						
Grade	SBA Level	= Course Placement	SBA Level	= Course Placement	SBA Level	= Course Placement
Freshman	1,2	Freshman English	3	Freshman English	4	Advanced Freshman English
Sophomore*	1,2	Sophomore English	3	Sophomore English	4	Advanced Sophomore English
Junior	1 or 2 (below 2548)	Junior English	3	Junior English	4	AP Language and Composition
Senior	1 or 2 (below 2548)	Bridge to College Senior English	3	Bridge to College Senior English	4	AP Literature and Composition

*Sophomores will be placed based on 8th grade SBA scores, 9th grade SBA Interim Assessments, 9th grade teacher recommendations, and 9th grade Fast Bridge assessments.

The Franklin Pierce School District strives to place students in academic classes that accelerate their learning and meet their academic needs. Based on board policy 2195 (Academic Acceleration Policy) students will be placed in the appropriate English and Math class based on: state test scores, teacher/counselor recommendation, and current grades. There is strong evidence that participation in advanced programs lead to success in college and the work force.

Freshman Lang Art 1 & 2

Grade: 9 **Course ID#:** ENG101/102 **Credit:** Full Year (1.0) **Dual Credit:** No

Graduation Requirement: ELA

Prerequisites: Placement by counselor / teacher recommendation only.

This is Freshman English 1 & 2 with additional support provided by a second teacher being in the room.

Freshman English 1 & 2

Grade: 9 **Course ID#:** ENG111/112 **Credit:** Full Year (1.0) **Dual Credit:** No

Graduation Requirement: ELA

Prerequisites: None.

The emphasis of this course is enhancing reading comprehension through the following genres of literature: memoir, short story, poetry, plays, and the novel. A secondary focus will be on expository and persuasive writing.

ADV Freshman English 1 & 2

Grade: 9 **Course ID#:** ENG121/122 **Credit:** Full Year (1.0) **Dual Credit:** No

Graduation Requirement: ELA

Prerequisites: None.

In addition to the regular Freshman English curriculum, emphasis is placed on class discussion and critical thinking skills. The multi-paragraph essay is used throughout the honor's curriculum. Students are expected to complete most assigned reading outside of class.

Sophomore Lang Art 1 & 2

Grade: 10 **Course ID#:** ENG201/202 **Credit:** Full Year (1.0) **Dual Credit:** No

Graduation Requirement: ELA

Prerequisites: Placement by counselor / teacher recommendation only.

Additional support provided by a second teacher being in the room.

This class focuses on World literature which reflects eras in World history. Students read a variety of literary forms, with emphasis on novels, short stories, and poetry by World authors. Students also refine writing, reading, speaking, and listening skills. A major focus for this course will be on explanatory and argumentative writing to prepare students for the SBA.

Sophomore English 1 & 2

Grade: 10 **Course ID#:** ENG211/212 **Credit:** Full Year (1.0) **Dual Credit:** No

Graduation Requirement: ELA

Prerequisites: None

This class focuses on World literature which reflects eras in World history. Students read a variety of literary forms, with emphasis on novels, short stories, and poetry by World authors. Students also refine writing, reading, speaking, and listening skills. A major focus for this course will be on explanatory and argumentative writing to prepare students for the SBA.

ADV Sophomore English 1 & 2

Grade: 10 **Course ID#:** ENG221/222 **Credit:** Full Year (1.0) **Dual Credit:** No

Graduation Requirement: ELA

Prerequisites: None

Sophomore Pre-AP English is for students who want an additional challenge in English. Course content is similar to regular Sophomore English but with a more sophisticated level of critical thinking, with more emphasis on advanced writing skills, and with a more accelerated reading pace. Students are expected to complete most assigned reading outside of class.

Junior Lang Art 1 & 2

Grade: 11 **Course ID#:** ENG301/302 **Credit:** Full Year (1.0) **Dual Credit:** No

Graduation Requirement: ELA

Prerequisites: Placement by counselor / teacher recommendation only.

This is Junior English 1 & 2 with additional support provided by a second teacher being in the room.

Junior English 1 & 2

Grade: 11 **Course ID#:** ENG311/312 **Credit:** Full Year (1.0) **Dual Credit:** No
Graduation Requirement: ELA
Prerequisites: None

This class focuses on American literature which reflects eras in American history. Students read a variety of literary forms, with emphasis on novels by American authors. Students also refine writing, reading, and research skills. All juniors write a major research paper.

AP English Language and Composition 1 & 2

Grade: 11 **Course ID#:** ENG331/332 **Credit:** Full Year (1.0) **Dual Credit:** Yes – Credit by Exam
Graduation Requirement: ELA

Prerequisites: Students will be **required** to take the AP examination (refer to page 7 for more information).

Course content emphasizes critical thinking, in-depth discussion, development of close reading skills, analysis of rhetorical style, research skills, understanding argumentative and persuasive techniques in language, and improved writing skills. Literature includes both fiction and non-fiction writings. Students are expected to complete assigned readings and projects outside of class. This course is taught in accordance with the Advanced Placement standards of the College Board.

Bridge to College English 1 & 2

Grade: 12 **Course ID#:** ENG423/424 **Credit:** Full Year (1.0) **Dual Credit:** No
Graduation Requirement: ELA

Prerequisites: Placement by ELA SBA scores (Recommend High Level 2: SBA).

This course will develop students' college and career readiness by building skills in critical reading, academic writing, speaking and listening, research and inquiry, and language use as defined by the new state English language arts learning standards for high school. Students will read complex nonfiction and fiction texts focusing on issues of both current and enduring importance. Students will learn to evaluate the credibility of information, critique others' opinions, and construct their own opinions based on evidence. By the end of the course, students will be able to use strategies for critical reading, argumentative writing, and independent thinking while reading unfamiliar texts and responding to them in discussion and writing. The course will also develop essential habits of mind necessary for student success in college, including independence, productive persistence, and metacognition. Students who earn a B or better will ensure that they can take credit bearing classes at community college without a placement test.

AP English Literature and Composition 1 & 2

Grade: 12 **Course ID#:** ENG431/432 **Credit:** Full Year (1.0) **Dual Credit:** Yes – Credit by Exam
Graduation Requirement: ELA

Prerequisites: Students will be **required** to take the AP examination (refer to page 7 for more information).

This is a rigorous advanced literature and composition class. Emphasis is on style analysis, essay writing, and in-depth discussion. At the conclusion of the class students are expected to take the College Board AP exam on the subject. If the student scores high enough on the exam, participating colleges and universities may grant college credit. This course is taught in accordance with the Advanced Placement standards of the College Board.

ELA Support Courses

Reading Lab 1 & 2

Grade: 9, 10 **Course ID#:** ENG501/502 **Credit:** Full Year (1.0) **Dual Credit:** No
Graduation Requirement: ELA

Prerequisites: Prior **teacher permission** required.

This class is for students with an Individual Education Plan that focuses on individualized skill areas.

Reading Lab 3 & 4

Grade: 11, 12 **Course ID#:** ENG503/504 **Credit:** Full Year (1.0) **Dual Credit:** No
Graduation Requirement: ELA

Prerequisites: Prior **teacher permission** required.

This class is for students with an Individual Education Plan that focuses on individualized skill areas.

EL Courses

EL English Elective- Beginning 1 & 2

Grade: 9, 10, 11, 12 **Course ID#:** ELE521/522

Credit: Semester (.50)

Dual Credit: No

Graduation Requirement: Elective

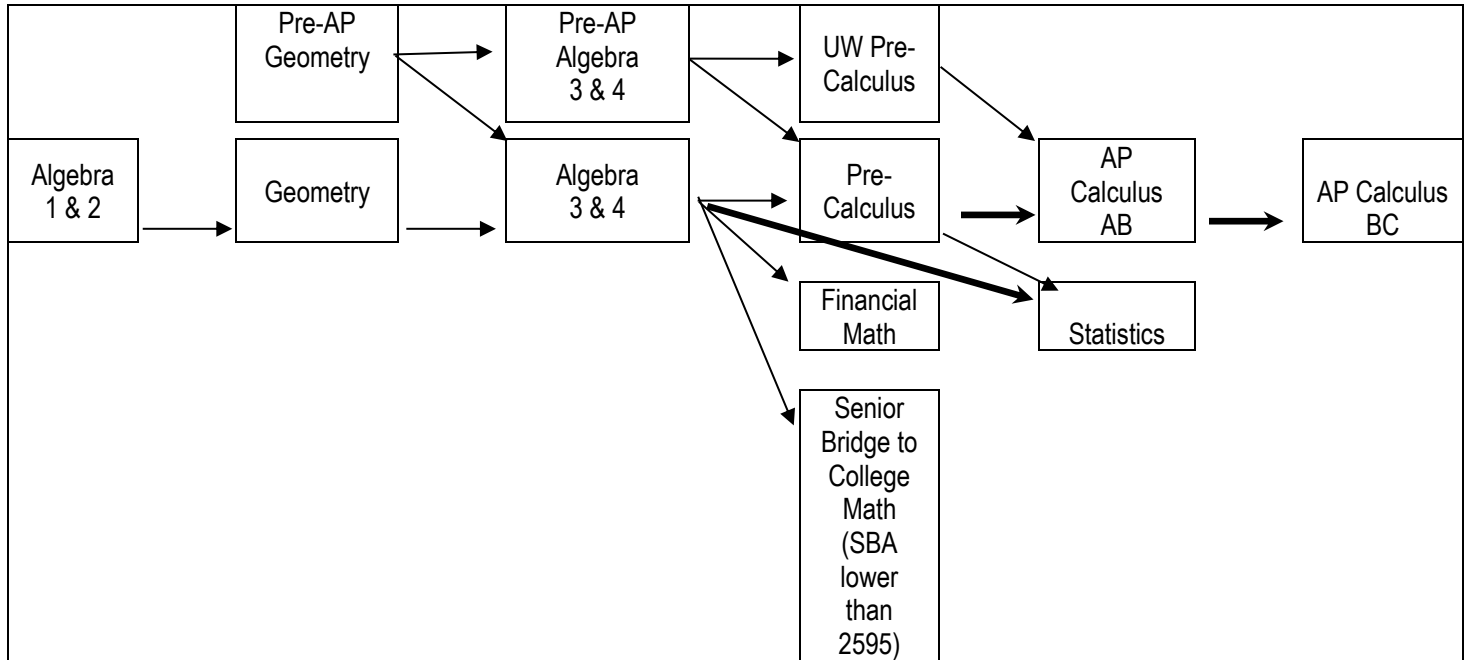
Prerequisites: Prior **teacher permission** required.

Qualification through WELPA or other state designated ELL placement test.

This course is designed for the emerging English language learner. The course work is aligned with English Language Proficiency standards with a focus on vocabulary building, basic reading skills, writing skills, phonemic awareness, speech skills, and an introduction to the U.S. school system. Emphasis in the class will be on the receptive (reader or listener/viewer), the productive (speaker or writer), and interactive (collaborative speaker/listener and reader/writer) modalities. This class is an elective and does not count towards an English Language Arts credit.

Mathematics

NOTE: Sequence placement is decided by multiple data points (Aims Web, AP Potential, SBA, EOC).



The Franklin Pierce School District strives to place students in academic classes that accelerate their learning and meet their academic needs. Based on board policy 2195 (Academic Acceleration Policy) students will be placed in the appropriate English and Math class based on: state test scores, teacher/counselor recommendation, and current grades. There is strong evidence that participation in advanced programs lead to success in college and the work force.

Basic Math 1 & 2

Grade: 9, 10, 11, 12 **Course ID#:** MTH101/102 **Credit:** Full Year (1.0) **Dual Credit:** No
Graduation Requirement: Mathematics
Prerequisites: Prior teacher permission required.
 This class is for students with an Individual Education Plan that focuses on individualized skill areas.

Pre-Algebra 1 & 2

Grade: 9, 10, 11, 12 **Course ID#:** MTH301/302 **Credit:** Full Year (1.0) **Dual Credit:** No
Graduation Requirement: Mathematics
Prerequisites: Prior teacher permission required.
 This class is for students with an Individual Education Plan that focuses on individualized skill areas.

Pre-Algebra 3 & 4

Grade: 9, 10, 11, 12 **Course ID#:** MTH401/402 **Credit:** Full Year (1.0) **Dual Credit:** No
Graduation Requirement: Mathematics
Prerequisites: Prior teacher permission required.
 This class is for students with an Individual Education Plan that focuses on individualized skill areas.

Algebra 1 & 2

Grade: 9, 10, 11 **Course ID#:** MTH111/112 **Credit:** Full Year (1.0) **Dual Credit:** No
Graduation Requirement: Mathematics
Prerequisites: None

Algebra is the extension of the ideas of arithmetic to more abstract forms. Algebra 1 & 2 is a prerequisite for geometry. A student who fails first semester may be transferred out of class by the recommendation of the teacher. *(TI-83plus or TI-84 calculator recommended.)*

ADV Geometry 1 & 2

Grade: 9, 10 **Course ID#:** MTH221/222 **Credit:** Full Year (1.0) **Dual Credit:** No
Graduation Requirement: Mathematics
Prerequisites: Successful completion (B or better) in Algebra 1/2.

Pre-AP Geometry 1 & 2 is a continuation of topics taught in Algebra 1 & 2 and Geometry. Critical thinking will be essential in covering concepts with greater depth and intensity. Students should expect to complete additional learning requirements outside of class. The course includes basic trigonometric functions and identities to help prepare students for Pre-Calculus. *(TI-83Plus, TI-84, or TI-89 graphing calculator required.)*

Geometry 1 & 2

Grade: 10, 11, 12 **Course ID#:** MTH211/212 **Credit:** Full Year (1.0) **Dual Credit:** No
Graduation Requirement: Mathematics
Prerequisites: Must have passed Algebra 1 & 2.

Geometry is the study and exploration of two and three-dimensional figures where algebraic concepts will be integrated throughout the course. Students will gain skills in logic, measurement, spatial sense, and learn the fundamentals of Trigonometry. Students will also see how modern technology can be used to test conjectures and discover geometric relationships. A student who fails first semester may be transferred out of the class by the recommendation of the teacher.

Algebra 3 & 4

Grade: 10, 11, 12 **Course ID#:** MTH311/312 **Credit:** Full Year (1.0) **Dual Credit:** No
Graduation Requirement: Mathematics
Prerequisites: Successful completion of Algebra 1 & 2 and Geometry 1 & 2.

Algebra 3 & 4 is a continuation of topics taught in Algebra 1 & 2 and Geometry with greater depth emphasized. The course also includes basic right triangle functions and identities. *(TI-83, TI-84 or TI-89 graphing calculator required.)*

ADV Algebra 3 & 4

Grade: 9, 10, 11 **Course ID#:** MTH321/322 **Credit:** Full Year (1.0) **Dual Credit:** No
Graduation Requirement: Mathematics
Prerequisites: Must have passed Algebra 1 & 2 and Geometry 1 & 2.

Must have B or better in Geometry 1 & 2 with qualifying assessment scores and current teacher recommendation.

Pre-AP Algebra 3 & 4 is a continuation of topics taught in Algebra 1 & 2 and Geometry. Critical thinking will be essential in covering concepts with greater depth and intensity. Students should expect to complete additional learning requirements outside of class. The course includes basic trigonometric functions and identities to help prepare students for Pre-Calculus. A student who fails 1st semester will be transferred out of the class. *(TI-83Plus, TI-84, or TI-89 graphing calculator required.)*

Consumer Math 1, 2

Grade: 11, 12 **Course ID#:** MTH601/602 **Credit:** Full Year (1.0) **Dual Credit:** No
Graduation Requirement: Mathematics
Prerequisites: Teacher Recommendation

This is a full year course designed to reinforce arithmetic skills for seniors through the study of consumer education topics. The course is intended to help students to develop in to active, knowledgeable and thoughtful consumers and to prepare them to engage in adult consumer activities with some skill and savvy, while understanding some of the mathematics that underlie their choices. Skills in the areas of whole numbers, fractions, decimals, percent and algebra are reviewed and taught as needed to deal with the consumer applications

Bridge to College Mathematics 1 & 2

Grade: 12 **Course ID#:** MTH423/424

Credit: Full Year (1.0)

Dual Credit: No

Graduation Requirement: Mathematics

Prerequisites: Placement by counselor / teacher recommendation only.

The Bridge to College Mathematics course is a math course for seniors who score a 2 on the Smarter Balanced Math Assessment and **are planning to attend a community college in Washington State**. The course curriculum emphasizes core concepts from Algebra 3/4 with some Pre-Calculus concepts. Topics include building and interpreting functions (linear, quadratic and exponential), writing, solving and reasoning with equations and inequalities, and summarizing, representing, and interpreting data. This course will be taught using the Bridge to College Mathematics course materials. Students who earn a B or better AND score a 2 on the Smarter Balanced Math Assessment will ensure that they can take credit bearing classes at community college without a placement test.

Pre-Calculus 1 & 2

Grade: 10, 11, 12 **Course ID#:** MTH411/412

Credit: Full Year (1.0)

Dual Credit: No

Graduation Requirement: Mathematics

Prerequisites: Successful completion (B or better) in Algebra 3 & 4.

This class is an extension of Algebra 3 & 4 with a more detailed approach to the function concept. Included are topics of probability, logarithms, complex numbers, functions, systems of equations, extensive study of trigonometry and vectors. **(TI-83, TI-84 or TI-89 graphing calculator required.)**

ADV Pre-Calculus 1 & 2 (UW in the High School)

Grade: 10, 11, 12 **Course ID#:** MTH421/422

Credit: Full Year (1.0)

Dual Credit: Yes – College Course Completion

Graduation Requirement: Mathematics

Prerequisites: Successful completion (B or better) in Pre-AP Algebra 3 & 4.

This class is an extension of Algebra 3 & 4 with a more detailed approach to the function concepts. Included are types functions, an extensive study of trigonometry, properties of elementary functions/ logarithms, conics, polynomial and rational functions, limits and derivatives. This course is intended to be taken as a prep class to AP Calculus. Students can earn University of Washington credit for this course. **(TI-83, TI-84 or TI-89 graphing calculator required.)**

Statistics 1 & 2

Grade: 11, 12 **Course ID#:** MTH413/414

Credit: Full Year (1.0)

Dual Credit: No

Prerequisites: Algebra 3 & 4

Looking for a math class that will help you in your college studies in science, psychology, business, or social sciences? Most college majors today require an introductory statistics course. This class will give you a head start for success. This activities based class will introduce you to the world of data analysis. We will collect data using surveys and experiments and interpret the data to make informed decisions. The topics include the use of graphs such as histograms, stem plots, time plots, and scatter plots to display data, using numbers such as median, mean, and standard deviation to describe data, and evaluating data distributions. Students examine relationships using correlations and least square regression. They calculate the probability of simple and compound events. They learn to estimate with confidence as well as to explore tests of significance, and to evaluate the validity of statistics contained within published reports. Strong reading and interpretation skills essential.

AP Calculus AB 1 & 2

Grade: 11, 12 **Course ID#:** MTH631/632

Credit: Full Year (1.0)

Dual Credit: Yes – Credit by Exam

Graduation Requirement: Mathematics

Prerequisites: Successful completion (B or better) in Pre-AP Pre-Calculus 1 & 2 and/or SBA score of 3 or better with qualifying assessment scores and current teacher recommendation. Students will be **required** to take the AP examination (refer to page 7 for more information).

Calculus is the study of the operations and applications of derivatives, integrals, and limits. **(TI-83, TI-84 or TI-89 graphing calculator required.)** This course is taught in accordance with the Advanced Placement standards of the College Board.

AP Calculus BC 1 & 2

Grade: 12 **Course ID#:** MTH633/634

Credit: Full Year (1.0)

Dual Credit: Yes – Credit by Exam

Graduation Requirement: Mathematics

Prerequisites: Successful completion (B or better) in Calculus 1 & 2, SBAC score of 3 or better. Students will be **required** to take the AP examination (refer to page 7 for more information).

This course expands the student's previous knowledge of derivatives, integrals and limits, and includes the study of series and sequences. **(TI-83, TI-84 or TI-89 graphing calculator required.)** This course is taught in accordance with the Advanced Placement standards of the College Board.

3rd Credit Math Options, if SBA has been passed by Junior Year

Financial Literacy 1 & 2

Grade: 9, 10, 11, 12 **Course ID#:** BUS211/212 **Credit:** Full Year (1.0) **Dual Credit:** Yes – CTE Dual Credit

Graduation Requirement: Mathematics (3rd Year) and CTE

Prerequisites: None

Are you constantly running out of money and finding it difficult to pay for the movies? This course will teach you financial management skills that will help you make smart financial decisions, now and in the future. Topics include: banking services, consumer credit, budgeting, saving, investing, stocks, insurance, retirement planning, how to buy a car and more. You will learn how to avoid financial mistakes by understanding your options and responsibilities. This class will help you to be financially successful in the real world.

Students who earn a grade of 'C' (2.0) or better in this course can earn college credit.

Aerospace Manufacturing 1 & 2

Grade: 10, 11, 12 **Course ID#:** TEC213/214 **Credit:** Full Year (1.0) **Dual Credit:** Yes – CTE Dual Credit

Graduation Requirement: CTE and Mathematics (3rd Year)

Prerequisites: None

This course is a hands-on course that will provide an overview of mechanical behavior and characteristics of aerospace materials including metal alloys, polymers, ceramics and composites. Students will receive hands-on experience in machining, testing and assessing the properties and performance of aerospace materials. Students will apply the skills learned by designing and making various projects. Seniors who complete this course and earn an industry recognized certificate will have an opportunity to interview with local companies. Students who earn a grade of 'C' (2.0) or better in this course can earn college credit. *This course may fulfill a Career & Technical Education (CTE), Mathematics, or an Elective credit.*

Aerospace Manufacturing Advanced 3 & 4

Grade: 11, 12 **Course ID#:** TEC313/314 **Credit:** Full Year **Dual Credit:** Yes – CTE Dual Credit

Graduation Requirement: CTE and Mathematics (3rd Year)

Prerequisites: Aerospace Manufacturing 1 & 2

This course that prepares students to apply basic engineering principles and technical skills in support of engineers and other professionals engaged in developing, manufacturing and testing aircraft, spacecraft and their systems. Includes instruction in aircraft/spacecraft systems technology; design and development testing, prototype and operational testing; inspection and maintenance procedures, instrument calibration, test equipment operation; maintenance and report preparation. Students who earn a grade of 'C' (2.0) or better in this course can earn college credit. *This course may fulfill a Career & Technical Education (CTE), Mathematics, or an Elective credit.*

Introduction to Engineering Design 1 & 2

Grade: 9, 10, 11, 12 **Course ID#:** TEC111/112 **Credit:** Full Year **Dual Credit:** Yes – CTE Dual Credit

Graduation Requirement: CTE and Mathematics (3rd Year)

Prerequisites: None

Students will explore the engineering design process, applying math, science, and engineering standards to hands-on projects. Students will work both individually and in teams to design solutions to a variety of problems using 3-D modeling software, and apply their skills utilizing 3-D printers and laser engravers. Students who earn a grade of 'C' (2.0) or better in this course can earn college credit. *This course may fulfill a Career & Technical Education (CTE), Mathematics, or an Elective credit.*

Introduction to Computer Science 1 & 2

Grade: 9, 10, 11, 12 **Course ID#:** TEC113/114 **Credit:** Full Year (1.0) **Dual Credit:** Yes – CTE Dual Credit

Graduation Requirement: CTE and Mathematics (3rd Year)

Prerequisites: None

Introduction to Computer Science will cover the foundations of computer science and basic programming, with an emphasis on helping students develop logical thinking and problem-solving skills. At a time when computer science affects how we work and live, Computer Science empowers students grades 9-12 to become creators, instead of merely consumers. Students who earn a grade of 'C' (2.0) or better in this course can earn college credit. *This course may fulfill a Career & Technical Education (CTE), Mathematics, or an Elective credit.*

Science

General Information

The FPHS science requirement is 3 years of science and with the class of 2017, passing the biology End-of-Course Exam (EOC) and with the class of 2018, the Washington State Assessment in Science.

Pathways		
1 st Year	Biology	ADV Physical Science
2 nd Year	Physical Science	AP Biology / AP Env Science
3 rd Year	Chemistry	ADV Chemistry
4 th Year and/or concurrently	Chemistry AP Biology AP Chemistry AP Physics Forensic Science Eco System Design	

Our Science department also has a dynamic STEM (science, technology, engineering, and math) component. These courses are introduced during the freshman year but can be started at any year in high school.

Biomedical Sciences	
1 st Year	Principles of Biomedical Science
2 nd Year	Human Body Systems
3 rd Year	Medical Interventions
4 th Year	Biomedical Innovations

Biology 1 & 2

Grade: 9

Course ID#: SCI111/112

Credit: Full Year (1.0)

Dual Credit: No

Graduation Requirement: Science (*Lab Science*)

Prerequisites: None

Biology is a course that investigates the characteristics of life and living things from the simplest through the most complex animals and plants. Laboratory activities and written assignments are used to explore first-hand experiences that show the characteristics of living things and their environment. Course will include modeling, dissection, lab reports, research projects and unit assessments. This course is specifically designed to meet Life Science portion of the Washington State K-12 Science Learning Standards.

ADV Physical Science 1 & 2

Grade: 9 **Course ID#:** SCI221/222 **Credit:** Full Year (1.0) **Dual Credit:** No

Graduation Requirement: Science (Lab science)

Prerequisites: Placement by **counselor / teacher recommendation**

This course uses laboratory practices to explore physical, earth, and space sciences. Through modeling, engineering, and design, students will discover the interactions between matter and energy through the lens of physics, climate, geology, and astronomy. The course is specifically designed to address the Washington State K-12 Science Learning Standards of HS-ESS1 (Earth's Place in the Universe), HS-ESS2 (Earth's Systems), HS-ESS3 (Earth and Human Activity), HS-PS2 (Motion and Stability: Forces and Interactions), HS-PS3 (Energy), and HS-PS4 (Waves and Their Application in Technologies for Information Transfer).

Physical Science 1 & 2

Grade: 10 **Course ID#:** SCI211/212 **Credit:** Full Year (1.0) **Dual Credit:** No

Graduation Requirement: Science (*Lab Science*)

Prerequisites: None

This course uses laboratory practices to explore physical, earth, and space sciences. Through modeling, engineering, and design, students will discover the interactions between matter and energy through the lens of physics, climate, geology, and astronomy. The course is specifically designed to address the Washington State K-12 Science Learning Standards of HS-ESS1 (Earth's Place in the Universe), HS-ESS2 (Earth's Systems), HS-ESS3 (Earth and Human Activity), HS-PS2 (Motion and Stability: Forces and Interactions), HS-PS3 (Energy), and HS-PS4 (Waves and Their Application in Technologies for Information Transfer).

AP Biology 1 & 2

Grade: 10, 11, 12 **Course ID#:** SCI131/132 **Credit:** Full Year (1.0) **Dual Credit:** Yes – Credit by Exam

Graduation Requirement: Science (*Lab Science*)

Prerequisites: Successful completion of Chemistry 1 & 2 or Pre-AP level science course. Students will be **required** to take the AP examination (refer to [page 7](#) for more information).

This course is designed to be the equivalent of a college introductory biology. AP Biology helps students develop an understanding of the concepts of modern biology and gain an appreciation of science inquiry. The goal is for students to understand science as a process rather than as an accumulation of facts, to have personal experience in scientific inquiry, and apply this knowledge and critical thinking to environmental and social concerns. Topics that will be included in coursework and extended labs includes: cells and cellular reactions, genetics and heredity, molecular biology, anatomy and physiology, evolution and ecology. This course is taught in accordance with the Advanced Placement standards of the College Board.

AP Environmental Science 1 & 2

Grades 10, 11, 12 **Course#:** SCI433/434 **Credit:** Full Year (1.0) **Dual Credit:** Yes – Credit by Exam

Graduation Requirement: Science (*Lab Science*)

Prerequisites: *Successful completion of Biology and/or Physical Science*

Recommended Courses: *Chemistry 1 & 2*

AP Environmental science is a comprehensive science course that helps students utilize a basic understand of biology and physical science to investigate and analyze current environmental issues. We will explore how humans interact with the natural world and the impact that our society has on local and global ecosystems. The course will include labs, outdoor fieldwork, research, writing, critical thinking, and reading to explore current environmental issues. This course is taught in accordance with the Advanced Placement standards of the College Board. **Students will be required to take the AP examination (refer to [page 7](#) for more information).**

Chemistry 1 & 2

Grade: 10, 11, 12 **Course ID#:** SCI311/312 **Credit:** Full Year (1.0) **Dual Credit:** No

Graduation Requirement: Science (*Lab Science*)

Prerequisites: Algebra 1 & 2, Geometry 1 & 2, and Biology 1 & 2. Students must have passed Algebra and Geometry EOC by start of class. Students may take Chemistry if taking Algebra 3 & 4 or higher lever math.

Chemistry deals with the composition, structure, and properties of substances and the transformations that they undergo. This chemistry course is recommended for admission into many colleges and in some cases even required. It is highly recommended for students interested in science-related careers such as medicine and engineering. The course is specifically designed to address the Washington State K-12 Science Learning Standards.

ADV Chemistry 1 & 2

Grade: 11 **Course ID#:** SCI321/322 **Credit:** Full Year (1.0) **Dual Credit:** No

Graduation Requirement: Science (*Lab Science*)

Prerequisites: Pre-AP level or AP level science course

Chemistry deals with the composition, structure, and properties of substances and the transformations that they undergo. This chemistry course is recommended for those students who are highly motivated and desire a career in medicine, engineering, or science. Chemistry is recommended for admission into many colleges and in some cases even required. The course is specifically designed to address the Washington State K-12 Science Learning Standards

AP Chemistry 1 & 2

Grade: 11, 12 **Course ID#:** SCI331/332 **Credit:** Full Year (1.0) **Dual Credit:** Yes – Credit by Exam

Graduation: Science (*Lab Science*)

Prerequisites: Successful completion (B or better) in both Chemistry 1 & 2 and Algebra 3 & 4. All students enrolled are expected to attempt the AP test in the spring. Students should be prepared to complete work outside of class-time due to pacing requirements. Students will be **required** to take the AP examination (refer to [page 7](#) for more information).

This course is designed to be the equivalent of the general chemistry course usually taken during the first college year. The second-year chemistry class will utilize the first-year chemistry course content as a foundation for discussion of these following complete topics: chemical kinetics, equilibrium, thermodynamics, electrochemistry, materials science, and biochemistry. Students are expected to spend extended time in the laboratory outside of regularly scheduled class time. This course is taught in accordance with the Advanced Placement standards of the College Board.

AP Physics 1 & 2

Grade: 11, 12 **Course ID#:** SCI431/432 **Credit:** Full Year (1.0) **Dual Credit:** No

Graduation Requirement: Science (*Lab Science*)

Prerequisites: Geometry and concurrently Algebra 3/4 or above

AP Physics 1 is an algebra-based, introductory college-level physics course. Students cultivate their understanding of physics through inquiry-based investigations as they explore these topics: kinematics, dynamics, circular motion and gravitation, energy, momentum, simple harmonic motion, torque and rotational motion, electric charge and electric force, DC circuits, and mechanical waves and sound. Students will be **required** to take the AP examination (refer to [page 7](#) for more information).

Eco System Design 1 & 2

Grade: 9, 10, 11, 12 **Course ID#:** SCI621/622 **Credit:** Full Year block class (2.0) **Dual Credit:** No

Graduation Requirement: CTE and Science (*Biology or Lab Science*)

Prerequisites: None

Eco System Design studies environmental science and ecosystems through agricultural, using the FPSD Farm as a living laboratory. The course is designed as a hands-on course that digs into systems thinking, biology, and ecology concepts while learning practical skills of growing food, business, and leadership skills. Students will have access to state-of-the-art tools and resources on the Franklin Pierce Farm site and learn how to design sustainable systems by growing food from seed to harvest. This class is lab and activity heavy and are held outside on the farm. *This course may fulfill a Career & Technical Education (CTE), Science, or an Elective credit.*

Principles of Biomedical Science 1 & 2

Grade: 9, 10, 11, 12 **Course ID#:** SCI115/116 **Credit:** Full Year **Dual Credit:** Yes – CTE Dual Credit

Graduation Requirement: CTE and Science (Lab Science) or Health & Fitness (Health)

Prerequisites: None

Students investigate the human body systems and various health conditions, including heart disease, diabetes, sickle cell disease, hypercholesterolemia, and infectious diseases. They determine the factors that led to the death of a fictional person and investigate lifestyle choices and medical treatments that might have prolonged the person's life. The activities and projects introduce students to human physiology, medicine, research processes, and bioinformatics. This course is designed to provide an overview of all the courses in the Biomedical Sciences program and lay the scientific foundation for subsequent courses. Students who earn a grade of 'C' (2.0) or better in this course can earn college credit. *This course may fulfill a Career & Technical Education (CTE), Science, Health or an Elective credit.*

Human Body Systems 1 & 2

Grade: 10, 11, 12

Course ID#: SCI215/216

Credit: Full Year

Dual Credit: Yes – CTE Dual Credit

Graduation Requirement: CTE and Science (Lab Science)

Prerequisites: *Principles of Biomedical Science 1 & 2 or teacher permission.*

Students examine the interactions of body systems as they explore identity, communication, power, movement, protection, and homeostasis. Students design experiments investigate the structures and functions of the human body and use data acquisition software to monitor body functions such as muscle movement, reflex and voluntary action, and respiration. Exploring science in action, students build organs and tissues on a skeletal manikin, work through interesting real-world cases, and play the roles of biomedical professionals to solve medical mysteries. Students who earn a grade of 'C' (2.0) or better in this course can earn college credit. *This course may fulfill a Career & Technical Education (CTE), Science, or an Elective credit.*

Medical Interventions 1 & 2

Grade: 11, 12

Course ID#: SCI315/316

Credit: Full Year

Dual Credit: Yes – CTE Dual Credit

Graduation Requirement: CTE and Science (Lab Science)

Prerequisites: *Principles of Biomedical Science 1 & 2 and Human Body Systems 1 & 2 or teacher permission.*

Students investigate a variety of interventions involved in the prevention, diagnosis and treatment of disease as they follow the life of a fictitious family. Students learn how to screen and fight infection; screen and evaluate the code in human DNA; prevent, diagnose and treat cancer; and prevail when the organs of the body begin to fail. Through these scenarios, students are exposed to a range of interventions related to immunology, surgery, genetics, pharmacology, medical devices, and diagnostics. Students who earn a grade of 'C' (2.0) or better in this course can earn college credit. *This course may fulfill a Career & Technical Education (CTE), Science, or an Elective credit.*

Biomedical Innovation 1 & 2

Grade: 11, 12

Course ID#: SCI415/416

Credit: Full Year

Dual Credit: No

Graduation Requirement: CTE and Science (Lab Science)

Prerequisites: *Principles of Biomedical Science 1 & 2, Human Body Systems 1 & 2 and Medical Interventions 1 & 2.*

Biomedical Innovation is the final course of the PLTW Biomedical Science sequence, students build on the knowledge and skills gained from previous courses to design innovative solutions for the most pressing health challenges of the 21st century. Students address topics ranging from public health and biomedical engineering to clinical medicine and physiology. They will have the opportunity to work on an independent design project with a mentor or advisor from a university, medical facility, or research institution. *This course may fulfill a Career & Technical Education (CTE), Science, or an Elective credit.*

Forensic Science 1 & 2

Grade: 10, 11, 12

Course ID#: SCI701/702

Credit: Full Year

Dual Credit: No

Graduation Requirement: Lab Science

Prerequisites: *None*

Forensic Science is the application of the biological, physical, biomedical, and social sciences to analyze and evaluate physical evidence, human testimony and criminal suspects. Students will be able to properly document a crime scene. Collect evidence, conduct lab processes, and analyze evidence. The course includes instruction in forensic medicine and laboratory technology, anthropology, fingerprint technology, crime scene analysis, examinations in autopsy, patterns, and documents, application of laws and regulations as well as professional careers, standards, and ethics.

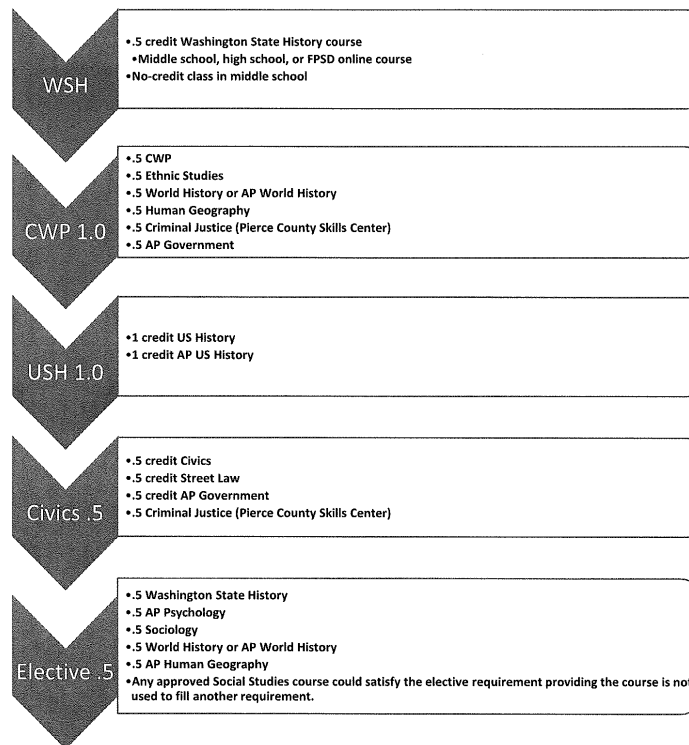
Social Studies

General Information

FPSD Social Studies Course Sequencing and Graduation Requirements

State and district requirements: 3 credits

- Washington State History: required
- United States History: 1 credit
- Contemporary World Problems: 1 credit
- Civics (stand-alone course by 2020-2021): .5 credit
- Social Studies Elective: .5 credit



AP Human Geography 1 & 2

Grade: 9, 10, 11, 12 **Course ID#:** SST131/132

Credit: Full Year (1.0)

Dual Credit: Yes – Credit by Exam

Graduation Requirement: Elective

Prerequisites: SBA ELA score of 3 or better - grade 8. Students will be **required** to take the AP examination (refer to [page 7](#) for more information).

AP Human Geography course introduces students to the systematic study of patterns and processes that have shaped human understanding, use, and alteration of Earth's surface. Students employ spatial concepts and landscape analysis to examine human social organization and its environmental consequences. They also learn about the methods and tools geographers use in their science and practice. This course is taught in accordance with the Advanced Placement standards of the College Board. Summer work will be REQUIRED for this class.

World History 1 & 2

Grade: 10 **Course ID#:** SST211/212

Credit: Full Year (1.0)

Dual Credit: No

Graduation Requirement: Social Studies

Prerequisites: None

World History includes the study of differing cultures in Europe from early global contact to modern global conflict. The examination in this class will focus on the development of Modern world history. The class will also help students to reach an understanding of world geography. World History will examine themes of power, conflict, oppression, change, technology, and nationalism. World History is a state-mandated requirement for graduation.

AP World History 1 & 2

Grade: 10 **Course ID#:** SST231/232 **Credit:** Full Year (1.0) **Dual Credit:** Yes – Credit by Exam

Graduation Requirement: Social Studies

Prerequisites: Students will be **required** to take the AP examination (refer to [page 7](#) for more information).

This course will provide highly motivated students a college level survey of World History. Students will do extensive reading of history materials outside of class. Essay writing and independent research will be required. This course is taught in accordance with the Advanced Placement standards of the College Board. Summer work will be REQUIRED for this class.

US History 1 & 2

Grade: 11 **Course ID#:** SST311/312 **Credit:** Full Year (1.0) **Dual Credit:** No

Graduation Requirement: Social Studies

Prerequisites: None

US History is a chronological survey of the nation's history from 1850 to the present day. Students will learn about various eras in American History through five major themes: opportunity, democracy, liberty, rights, and equality. US History is a state- mandated requirement for graduation.

AP US History 1 & 2

Grade: 11 **Course ID#:** SST331/332 **Credit:** Full Year (1.0) **Dual Credit:** Yes – Credit by Exam

Graduation Requirement: Social Studies

Prerequisites: Successful completion (B or better) in World History 1 & 2, SBA ELA score of 3 or better. Students will be **required** to take the AP examination (refer to [page 7](#) for more information).

This course will provide highly motivated students with a college level survey of American History. Students will do extensive reading of history materials outside of class. Essay writing and independent research will be required. This course is taught in accordance with the Advanced Placement standards of the College Board. Summer work will be REQUIRED for this class.

Civics 1

Grade: 12 **Course ID#:** SST411 **Credit:** Semester (0.5) **Dual Credit:** No

Graduation Requirement: Social Studies

Prerequisites: None

This course satisfies the state requirements to study the constitutions and governments of the United States and the state of Washington. This course is designed to acquaint students with the many choices that they will be required to make as functioning citizens. It deals with how various agencies of government help and limit our patterns of living and how citizen involvement can impact those agencies. The course will examine how non-governmental forces such as the media affect our lives and what people can do to influence those forces. Through simulation and actual practice, students will be given practical experience in the art of politics. The course will enable students to understand what they can do, both as individuals and collectively, to protect their rights and fulfill their responsibilities as citizens.

Contemporary World Problems 2 (CWP)

Grade: 12 **Course ID#:** SST412 **Credit:** Semester (0.5) **Dual Credit:** No

Graduation Requirement: Social Studies

Prerequisites: None

This course will utilize a thematic approach while exploring current global events. Some themes include United States values and international relations; current world military conflicts; the politics of world economics; environment and human rights. Students will be required to find foreign media sources and compare them with American sources that cover similar topics. Students will also use a regional/geographic study approach to address current issues in Europe, the Americas, Asia, Africa, the Middle East, and the United States. The specific intention of the course is to provide opportunities for critical analysis and to increase student understanding of America's role in the global community. You will be expected to express your views and opinions, orally and in writing, on a regular basis. You will be expected to support those views in the face of contradictory ones.

Ethnic Studies (can be taken instead of CWP)

Grade: 9-12 **Course ID#:** SST617 **Credit:** Semester (0.5) **Dual Credit:** No

Graduation Requirement: Social Studies

Prerequisites: None

Ethnic Studies focuses on the experiences of Native Americans, African Americans, Asian Americans, Latinxs, and Chicanxs, and other racialized people in the US. The course will examine how race and racism have been, and continue to be, central to shaping, understanding, and reacting to American society. As we do this work, we will also explore how these ideas create and concentrate economic, political, and social power, and how this in turn leads to inequalities. The objective to this work is for the student to gain consciousness about their personal connections to local and national history, and of their own potential as agents of social justice, civic responsibility, and cultural change.

AP Psychology 1 & 2

Grade: 11, 12

Course ID#: SST655/656

Credit: Full Year (1.0)

Dual Credit: Yes – Credit by Exam

Graduation Requirement: Elective and Social Studies

Prerequisites: SBA ELA score of 3 or better. Students will be **required** to take the AP examination (refer to page 7 for more information).

This course is designed to be the equivalent of a college introductory psychology class. This psychology course is designed to introduce you to the systematic and scientific study of the behavior and mental processes of human beings and other animals. You will be exposed to the psychological facts, principles, and phenomena associated with each of the major subfields within psychology. You will also learn about the ethics and methods psychologists use in their science and practice. This course is taught in accordance with the Advanced Placement standards of the College Board. Summer work will be **REQUIRED** for this class.

AP US Government and Politics 1 & 2

Grade: 12

Course ID#: SST431/432

Credit: Full Year (1.0)

Dual Credit: Yes – Credit by Exam

Graduation Requirement: Social Studies - This course meets the Civics & CWP requirement.

Prerequisites: Successful completion (B or better) in US History 1 & 2 **or** must have passed AP US History 1 & 2, SBA ELA score of 3 or better. Students will be **required** to take the AP examination (refer to page 7 for more information).

Advanced Placement Government is a course designed to be the equivalent of an Introduction to Government course usually taken in the first year of college. This course is about the American political system. This course will discuss the foundation of our nation's government and the development thereof. Students will be able to evaluate the role of the federal government in society and the concepts that flow from this. The course will examine political culture today within the context of elections, campaigns, lobbying and lawmaking. This course differs from other government courses with the respect to the textbook used, the topics covered, and the intensity of study. This course is taught in accordance with the Advanced Placement standards of the College Board.

Washington State History

Grade: 11, 12

Course ID#: SST611

Credit: Semester (0.5)

Dual Credit: No

Graduation Requirement: Social Studies

Prerequisites: None

Washington State History includes the study of Northwest geography and the migration flows of people into the region. The history of the region from territorial times to the present is studied. The natural and human resources of the state are examined with emphasis on present economic and ecological problems. The structure of state government is presented. Washington State History is a state-mandated requirement for graduation.

Health & Fitness

General Information

1. All students are required to complete three (3) semesters of Physical Education and one (1) semester of Health in grades 9 through 12.
2. Students may complete their physical education requirements during any semesters of grades 9 through 12.
3. All courses are offered co-ed.
4. Students are required to dress in acceptable workout clothes and shoes for credit.
5. Students may take any semester long course multiple times with the exception of Intro to PE.

Family Health

Grade: 9, 10, 11, 12 **Course ID#:** HPE111 **Credit:** Semester **Dual Credit:** No

Graduation Requirement: Health

Prerequisites: None

Family Health is designed to prepare students for life-long decision making, problem solving, critical thinking, and management skills related to health and wellness issues impacting families. The primary role is enabling students to assume an active role in developing healthy lifestyles for themselves and others. Integrating the Washington Health and Fitness essential learning's with standards and competencies from the National Standards for Family and Consumer Sciences Education, this course focuses on the interrelationships of healthy choices and a productive, satisfying life.

Intro to PE

Grade: 9 **Course ID#:** HPE112 **Credit:** Semester (0.5) **Dual Credit:** No

Graduation Requirement: Health & Fitness (PE)

Prerequisites: None

This is the first Physical Education course to be taken and must be satisfactorily completed before enrolling in any other Physical Education course. Grading will be based on active involvement, participation level, written tests, and completed coursework. The class involves a strong emphasis on personal fitness through participation, including, but not limited to, the following: general fitness testing, aerobic exercise, weight-lifting activities, individual and dual activities, team activities, and general fitness principles. **Gym clothes and fitness shoes are required of all students. Regular attendance and participation in all activities is mandatory for satisfactory completion of this course as per student handbook.**

Club Fitness

Grade: 9, 10, 11, 12 **Course ID#:** HPE116 **Credit:** Semester (0.5) **Dual Credit:** No

Graduation Requirement: Health & Fitness (PE)

Prerequisites: Intro to PE

This class consists of both aerobic and anaerobic workouts. The goal for this class is to provide students with the opportunity to improve their fitness levels, improve self-esteem by creating a positive concept of themselves, and to have a better understanding of the importance of the role of physical activity in living a long, healthy life. Workout opportunities include: floor aerobics, step, circuit, fitness days, muscular fitness, flexibility, and a chance to create personalized routines. This class may be repeated for credit. **Gym clothes and fitness shoes are required of all students. Regular attendance and participation in all activities is mandatory for satisfactory completion of this course as per student handbook.**

Individual and Dual Sports

Grade: 9, 10, 11, 12 **Course ID#:** HPE114 **Credit:** Semester (0.5) **Dual Credit:** No

Graduation Requirement: Health & Fitness (PE)

Prerequisites: Intro to PE

This course will provide a strong emphasis on fitness through participation in a variety of activities related to individual and dual sports and lifetime fitness activities. Students will be tested regularly on knowledge, skills, and fitness throughout the class. Grading will be based upon mastery of skills, rules, regulations and participation. Potential activities include tennis, badminton, paddle ball, bowling, golf, ultimate Frisbee, fitness testing, and others. This class may be repeated for credit. **Gym clothes and fitness shoes are required of all students. Regular attendance and participation in all activities is mandatory for satisfactory completion of this course as per student handbook.**

Strength Training

Grade: 9, 10, 11, 12 **Course ID#:** HPE115

Credit: Semester (0.5) **Dual Credit:** No

Graduation Requirement: Health & Fitness (PE)

Prerequisites: Intro to PE

This class is a high-level conditioning class. The course is designed for the student desiring to improve strength and endurance through a highly structured weight-lifting program. The class is designed to develop an understanding of strength training and its effects on the mind and body. This is a physically demanding course. Grading will be based upon mastery of skills, rules, regulations, participation and record keeping. This class may be repeated for credit. **Gym clothes and fitness shoes are required of all students. Regular attendance and participation in all activities is mandatory for satisfactory completion of this course as per student handbook.**

Team Sports

Grade: 9, 10, 11, 12 **Course ID#:** HPE118

Credit: Semester (0.5) **Dual Credit:** No

Graduation Requirement: Health & Fitness (PE)

Prerequisites: Intro to PE

This course will provide a strong emphasis on fitness through participation in a variety of team sports activities. Students will be tested regularly on knowledge, skills, and fitness throughout the class. Grading will be based upon mastery of skills, rules, regulations and participation. Potential activities include basketball, fleet ball, Frisbee football, football, hockey, volleyball, softball, soccer, track & field, and others. This class may be repeated for credit. **Gym clothes and fitness shoes are required of all students. Regular attendance and participation in all activities is mandatory for satisfactory completion of this course as per student handbook.**

Walking Fitness

Grade: 9, 10, 11, 12 **Course ID#:** HPE117

Credit: Semester (0.5) **Dual Credit:** No

Graduation Requirement: Health & Fitness (PE)

Prerequisites: Intro to PE

This course is designed to teach and apply the principles of lifetime physical fitness, utilizing the five major components of cardio-respiratory endurance, muscular strength, muscular endurance, flexibility and body composition. A variety of health and wellness issues will be addressed. The components of fitness will be met through structured individually paced fitness walking techniques and strength conditioning exercises.

Fitness Specialist 1 & 2

Grade: 11, 12 **Course ID#:** HPE211/212

Credit: Full Year (1.0) **Dual Credit:** Yes – CTE Dual Credit

Graduation Requirement: CTE and Physical Education

Prerequisites: *Successful completion (C or better) in Intro to PE or teacher permission. Human Body Systems 1 & 2 (can be taken concurrently).*

The fitness specialist program is designed to prepare students to work in the fitness industry. Upon completion of this program and graduation students will be able to gain personal fitness trainer certification. This course prepares students for employment in health and fitness clubs, wellness centers, public and private recreation facilities, hospitals and corporate fitness programs. In this class students will apply what they learn in the weight room with student athletes. Students will also receive certification in CPR and First Aid. *This course may fulfill a Career & Technical Education (CTE), Physical Education, or an Elective credit.*

Principles of Biomedical Science 1 & 2

Grade: 9, 10, 11, 12 **Course ID#:** SCI115/116

Credit: Full Year (1.0)

Dual Credit: Yes – CTE Dual Credit

Graduation Requirement: CTE and Science (Lab Science) or Health & Fitness (Health)

Prerequisites: None

Students investigate the human body systems and various health conditions, including heart disease, diabetes, sickle cell disease, hypercholesterolemia, and infectious diseases. They determine the factors that led to the death of a fictional person and investigate lifestyle choices and medical treatments that might have prolonged the person's life. The activities and projects introduce students to human physiology, medicine, research processes, and bioinformatics. This course is designed to provide an overview of all the courses in the Biomedical Sciences program and lay the scientific foundation for subsequent courses. Students who earn a grade of 'C' (2.0) or better in this course can earn college credit. *This course may fulfill a Career & Technical Education (CTE), Science, Health or an Elective credit.*

Arts

General Information

Students are encouraged to consider the Arts courses when choosing their electives as they enrich all career paths.

Performing Arts

Beginning Choir 1 & 2

Grade: 9, 10, 11, 12 **Course ID#:** FNA301/302 **Credit:** Full Year (1.0) **Dual Credit:** No

Graduation Requirement: Arts

Prerequisites: All performances are required.

This large vocal ensemble is open to all freshmen and/or first-year singers capable of matching pitch. Course content will include training in basic vocal production, concert preparation and performance, sight singing, ear training, and music theory. Some costs may be expected for uniform needs and extra needs of the class. Course content will include training in vocal production and concert preparation.

Intermediate Choir 1 & 2

Grade: 9, 10, 11, 12 **Course ID#:** FNA313/3124 **Credit:** Full Year (1.0) **Dual Credit:** No

Graduation Requirement: Arts

Prerequisites: Audition and teacher permission.

This vocal ensemble is a select glee club. Course content includes the preparation and performance soprano and alto literature in all styles. Intermediate Choir participates in concerts, contests and variety of special performances at the school and in the community. Attendance at all performances is required. No one admitted without audition.

Advanced Choir 1 & 2

Grade: 10, 11, 12 **Course ID#:** FNA315/316 **Credit:** Full Year (1.0) **Dual Credit:** No

Graduation Requirement: Arts

Prerequisites: Audition or **teacher permission** only.

The Advanced Choir will participate in concerts, contests, and festivals, and in a variety of special performances at the school and in the community. Each member may be required to purchase a uniform. Attendance and participation in all performances is required.

Concert Band 1 & 2

Grade: 9, 10, 11, 12 **Course ID#:** FNA411/412 **Credit:** Full Year (1.0) **Dual Credit:** No

Graduation Requirement: Arts

Prerequisites: Prior experience on a band instrument. All other student's teacher permission required.

Concert Band is a non-audition group that focuses on the basics of technique, tone production, ensemble performance, and individual study. Through rigorous rehearsals and practices, students will gain valuable experience on their instruments, learn teamwork, and gain self-confidence through performance. Concert Band members are required to attend all Pep Band functions including all school assemblies, football games, eight basketball games, and the Daffodil Parade.

World Music Ensemble

Grade: 9, 10, 11, 12 **Course ID#:** FNA603 **Credit:** Semester (0.5) **Dual Credit:** No

Graduation Requirement: Arts

Prerequisites: None.

The WME is multicultural ensemble with a foundation in world music drumming. We will explore percussion, singing and dance from a variety of cultures across the globe. Coursework will be influenced by student interests and backgrounds. No prior musical experience is required, but ensemble members are expected to exhibit enthusiasm, respect for other cultures and a willingness to try new things. We will perform several times throughout the year.

Drumline

Grade: 9, 10, 11, 12

Course ID#: FNA567

Credit: Full Year (1.0)

Dual Credit: No

Graduation Requirement: Arts

Prerequisites: None

Any student who desires to learn about the basics of drumming and playing with a drumline should register of this class. Students will learn how to be part of an ensemble, learn teamwork, strategies for personal practice, and grow musically through performance experiences. Students should expect to purchase drum sticks in order to participate in class.

Jazz Ensemble 1 & 2

Grade: 9, 10, 11, 12

Course ID#: FNA419/420

Credit: Full Year (1.0)

Dual Credit: No

Graduation Requirement: Arts

Prerequisites: Audition and teacher permission required.

Concurrent enrollment in Symphonic or Concert Band required. All students who wish to participate in Jazz Band must pass an audition. Students will learn the basics of jazz through performance in a full-sized jazz ensemble. This ensemble has a more rigorous performance schedule than either the Symphonic or Concert Bands. Students must be able to commit to the performance schedule or arrange absences with the teacher in order to succeed in the class.

Symphonic Band 1 & 2

Grade: 10, 11, 12

Course ID#: FNA413/414

Credit: Full Year (1.0)

Dual Credit: No

Graduation Requirement: Arts

Prerequisites: Prior experience on a band instrument. All other student's teacher permission required.

Symphonic Band is an audition group that focuses on more advanced technique, tone production, ensemble performance, and individual study. Through rigorous rehearsals and practices, students will gain valuable experience on their instruments, learn teamwork, and gain self-confidence through performance. Symphonic Band members are required to attend all Pep Band functions including all school assemblies, football games, eight basketball games, and the Daffodil Parade.

Bach to Tupac

Grade: 9, 10, 11, 12

Course ID#: FNA571

Credit: Semester (0.5)

Dual Credit: No

Graduation Requirement: Arts

Prerequisites: None

Bach to Rock is focused on how music has affected and is affected by culture and society throughout history. Students will learn about all major eras of music history and how they relate to our modern musical world. Students will also relate their own musical experiences to music history and learn how they are personally affected by music on a daily basis. No prior musical experience is required to succeed in this class. Students will gain an appreciation for various styles of music through rigorous listening regimen.

Beginning Guitar

Grade: 9, 10, 11, 12

Course ID#: FNA615

Credit: Semester (0.5)

Dual Credit: No

Graduation Requirement: Arts

Prerequisites: None

In beginning guitar, students will learn basic notes and chords for guitar or ukulele. After mastering this, we will learn simple folk songs and twelve bar blues. Required equipment is an acoustic guitar or ukulele and a notebook for music.

Visual Arts

Technology Exploration 1 & 2

Grade: 9, 10, 11, 12 **Course ID#:** ATC311/312

Credit: Full Year (1.0)

Dual Credit: Yes – CTE Dual Credit

Graduation Requirement: CTE and Arts

Prerequisites: None

Do you want to work with computers? Do you like taking photos or creating designs? In this class you will learn the basics of digital photography as well as basic design principles using Photoshop and InDesign and computer science skills. You will also learn Microsoft Word and Microsoft PowerPoint 2010 with the opportunity to earn industry certification. Students who earn a grade of 'C' (2.0) or better in this course can earn college credit.

Graphic Design

Grade: 9, 10, 11, 12 **Course ID#:** ATC321

Credit: Semester (0.5)

Dual Credit: Yes – CTE Dual Credit

Graduation Requirement: CTE and Arts

Prerequisites: None

Unleash your creativity in this dual credit course that will develop your digital artwork skills. Using Adobe Photoshop, Illustrator and InDesign students will create works of art that are meaningful and personal. Learn the principles of design and art elements while gaining skills that make you employable. Students are exposed to the entire creative process from concept sketches to layout requirements for printing. Students who earn a grade of 'C' (2.0) or better in this course can earn college credit. *This course may fulfill a Career & Technical Education (CTE), Art, or an Elective credit.*

Visual Art and Design

Grade: 9, 10, 11, 12 **Course ID#:** FNA111

Credit: Semester (0.5)

Dual Credit: No

Graduation Requirement: Arts

Prerequisites: None

Students in this course explore a variety of two-dimensional art media including a variety of types and styles of drawing and painting. Students may build on skills and concepts learned in middle school art classes or may be learning art skills and concepts for the first time. The focus of the course is on producing artwork with a range of media, techniques, and styles. The course also begins to explore art history, art criticism, and aesthetics. There is a focus on art skills that transfer to careers in the arts. Students who earn a grade of 'C' (2.0) or better in this course can earn college credit. *This course may fulfill a Career & Technical Education (CTE), Art, or an Elective credit.*

Glass Art Beginning

Grade: 9, 10, 11, 12 **Course ID#:** FNA113

Credit: Semester (0.5)

Dual Credit: No

Graduation Requirement: CTE and Arts

Prerequisites: None

This course prepares students to apply knowledge and technical skills in creating, producing, and selling products in the fields of glass and mixed media. Instruction includes art theory, design, safety, technical skills, production skills and marketing, sales, entrepreneurship, and management functions associated with operating a small business in professional arts. *This course may fulfill a Career & Technical Education (CTE), Art, or an Elective credit.*

Glass Art Advanced

Grade: 10, 11, 12 **Course ID#:** FNA114

Credit: Semester (0.5)

Dual Credit: No

Graduation Requirement: CTE and Arts

Prerequisites: *Glass Art Beginning or teacher permission*

In this course the student will continue to develop personal expression through glass art. Students design their own artworks, determining the best media and techniques to communicate their ideas to further develop their artistic style expanding their glass art portfolio. Instruction includes project planning, art analyses, and critiques. *This course may fulfill a Career & Technical Education (CTE), Art, or an Elective credit.*

Pottery

Grade: 9, 10, 11, 12 **Course ID#:** FNA117

Credit: Semester (0.5) **Dual Credit:** No

Graduation Requirement: CTE and Arts

Prerequisites: None

This course teaches the fundamentals of Pottery. Students learn pottery and sculpture using hand building techniques. Some wheel throwing techniques are explored. Students learn finishing techniques in firing and glazing. Artistic style and ideas are developed while applying the elements of art and principles and design. Historical and contemporary pottery/ceramics are studied as students build their skills, understanding and practice their visual literacy. *This course may fulfill a Career & Technical Education (CTE), Art, or an Elective credit.*

Digital Photography Beginning

Grade: 9, 10, 11, 12 **Course ID#:** ATC301

Credit: Semester (0.5) **Dual Credit:** Yes – CTE Dual Credit

Graduation Requirement: CTE and Arts

Prerequisites: None

This course will focus on career exploration in the fields of photography. The course will include basic theories, methods and techniques used to plan, produce, and distribute photos. Includes instruction in lighting, camera options, composition, production preparation, and related computer applications. Students who earn a grade of 'C' (2.0) or better in this course can earn college credit. *This course may fulfill a Career & Technical Education (CTE), Art, or an Elective credit.*

Video Editing 1 & 2

Grade: 9, 10, 11, 12 **Course ID#:** ATC211/212

Credit: Full Year (1.0) **Dual Credit:** Yes – CTE Dual Credit

Graduation Requirement: CTE and Arts

Prerequisites: None

This is a performance-based class for those interested in the television, film, or video production industries. Coursework includes practical experience shooting and editing videos. You will produce a final project for the film festival. Students who earn a grade of 'C' (2.0) or better in this course can earn college credit. *This course may fulfill a Career & Technical Education (CTE), Art, or an Elective credit.*

Yearbook 1 & 2

Grade: 10, 11, 12 **Course ID#:** ATC401/402

Credit: Full Year (1.0) **Dual Credit:** Yes – CTE Dual Credit

Graduation Requirement: CTE and Arts

Prerequisites: Digital Photography, Graphic Design or teacher permission

In this course you will have the opportunity to develop a creative theme and design the schools' yearbook. Students will apply technical knowledge and skills to the layout, design and publication. All phases of publication including copy writing, layout, and photography are covered by applying sophisticated computer technology to contemporary design. Students will be required to work outside of class time to meet publishing deadlines. Students who earn a grade of 'C' (2.0) or better in this course can earn college credit. *This course may fulfill a Career & Technical Education (CTE), Art, or an Elective credit.*

Electives

AP Human Geography 1 & 2

Grade: 9, 10, 11, 12 **Course ID#:** SST131/132 **Credit:** Full Year (1.0) **Dual Credit:** Yes – Credit by Exam

Graduation Requirement: Elective

Prerequisites: SBA ELA score of 3 or better - grade 8. Students will be **required** to take the AP examination (refer to [page 7](#) for more information).

AP Human Geography course introduces students to the systematic study of patterns and processes that have shaped human understanding, use, and alteration of Earth's surface. Students employ spatial concepts and landscape analysis to examine human social organization and its environmental consequences. They also learn about the methods and tools geographers use in their science and practice. This course is taught in accordance with the Advanced Placement standards of the College Board. Summer work will be REQUIRED for this class.

AVID Freshman 1 & 2

Grade: 9 **Course ID#:** ELE123/124 **Credit:** Full Year (1.0) **Dual Credit:** No

Graduation Requirement: Elective

Prerequisites: None

The AVID course is an elective class for students who are college-bound. The AVID curriculum focuses on writing, inquiry, collaboration, organization and reading (WICOR) through the AVID High School curriculum which is both teacher and tutor-led activities. Twice a week, current college students lead tutorials where students clarify points of confusion in their classes. Students will increase awareness of their personal contributions to their learning, as well as their involvement in their school and community. Students will prepare for and participate in college entrance and placement exams, while refining study skills and test-taking, note-taking, and research techniques. Students will also participate in college visits and interviewing guest speakers to get motivated for college admissions.

AVID Sophomore 1 & 2

Grade: 10 **Course ID#:** ELE223/224 **Credit:** Full Year (1.0) **Dual Credit:** No

Graduation Requirement: Elective

Prerequisites: None

The AVID course is an elective class for students who are college-bound. The AVID curriculum focuses on college visits, guest speakers, writing, inquiry, collaboration, organization and reading (WICOR) through the AVID High School curriculum which is both teacher and tutor-led activities. Twice a week, current college students lead tutorials where students clarify points of confusion in their classes. The 10th grade AVID Elective course, students will continue to refine their academic learning plans and goals, increasing awareness of their actions and behaviors, as well as develop an increased ability to self-monitor, self-regulate, and manage time. Students will expand their writing portfolio to include: analyzing prompts, supporting arguments and claims, character analysis and detailed reflections. Lastly, students will narrow down their college and careers of interest, based on personal interests and goals.

AVID Junior 1 & 2

Grade: 11 **Course ID#:** ELE323/324 **Credit:** Full Year (1.0) **Dual Credit:** No

Graduation Requirement: Elective

Prerequisites: None

The AVID course is an elective class for students who are college-bound. The course emphasizes rhetorical reading, analytical writing, collaborative discussion strategies, tutorial inquiry study groups, preparation for college entrance and placement exams (writing college admissions essays and taking the SAT), college study skills and test-taking strategies, note-taking and research. The 11th grade AVID Elective course is the first part in a junior/senior seminar course that focuses on writing and critical thinking expected of first and second-year college students. In addition to the academic focus of the AVID seminar, there are college-bound activities, methodologies and tasks that should be undertaken during the junior year to support students as they apply to four-year universities and confirm their postsecondary plans.

AVID Senior 1 & 2

Grade: 12 **Course ID#:** ELE423/424 **Credit:** Full Year (1.0) **Dual Credit:** No

Graduation Requirement: Elective

Prerequisites: None

The AVID course is an elective class for students who are college-bound. The course emphasizes rhetorical reading, analytical writing, collaborative discussion strategies, tutorial inquiry study groups, preparation for college entrance and placement exams, college study skills and test-taking strategies, note-taking and research. The 12th grade AVID Elective course, students complete their college, scholarship, and financial aid applications in class. Students will continue to refine their academic learning plans and goals, create legacy projects including service learning projects/mentoring, as well as develop an increased ability to self-monitor, self-regulate, and manage time. Students will expand their writing portfolio to include: an argumentative research paper on a social issue and detailed reflections. Lastly, students will prepare for college using inquiry based collaborative study groups utilizing higher order thinking questioning techniques.

Leadership Advanced 1 & 2

Grade: 10, 11, 12 **Course ID#:** ELE231/232 **Credit:** Full Year (1.0) or Semester (0.5) **Dual Credit:** No

Graduation Requirement: Elective

Prerequisites: ASB executive officers are required to enroll. Class officers are strongly encouraged to enroll. All other students are selected through an application process.

This classroom-based course investigates the integral skills needed to empower effective student leaders. Students will learn leadership skills such as decision making, goal setting, event management and process analysis by exploring case studies and examples from popular culture. Students will also develop and execute projects designed to increase student pride and motivation.

Learning Strategies 1 & 2

Grade: 9 **Course ID#:** ELE103/104 **Credit:** Full Year (1.0) **Dual Credit:** No

Graduation Requirement: Elective

Prerequisites: Prior **teacher permission** required.

Focuses on social, emotional and behavioral needs for students with an Individualized Education Plan. Class focuses on secondary transition and independent study skills along with how to recognize and manage behaviors.

Tools for Success 1 & 2

Grade: 10 **Course ID#:** ELE101/102 **Credit:** Full Year (1.0) **Dual Credit:** No

Graduation Requirement: Elective

Prerequisites: Prior **teacher permission** required.

Focuses on social, emotional and behavioral needs for students with an Individualized Education Plan. Class focuses on post-secondary transitioning, job exploration and independent living along with how to recognize and manage behaviors.

Sociology

Grade: 10, 11, 12 **Course ID#:** SST615 **Credit:** Semester (0.5) **Dual Credit:** No

Graduation Requirement: Elective

Prerequisites: None

Sociology is the study of human relationships. Explore the meaning behind behavior and society's impact on the individual. This is a survey course that explores introductory sociology concepts. This course will help enable students to see the connection between themselves and society.

AP Psychology 1 & 2

Grade: 11, 12 **Course ID#:** SST655/656 **Credit:** Full Year (1.0) **Dual Credit:** Yes – Credit by Exam

Graduation Requirement: Elective and Social Studies

Prerequisites: SBA ELA score of 3 or better. Students will be **required** to take the AP examination (refer to **page 7** for more information).

This course is designed to be the equivalent of a college introductory psychology class. This psychology course is designed to introduce you to the systematic and scientific study of the behavior and mental processes of human beings and other animals. You will be exposed to the psychological facts, principles, and phenomena associated with each of the major subfields within psychology. You will also learn about the ethics and methods psychologists use in their science and practice. This course is taught in accordance with the Advanced Placement standards of the College Board. Summer work will be REQUIRED for this class.

World Language

In the World Language program, students will demonstrate essential language skills needed to meet their basic needs and to communicate in real life situations through listening, speaking, reading, and writing. Additionally, students will develop an understanding of the various cultures of the target language. Students will learn through a variety of instructional strategies such as listening input, modeling, group work, working with technology, games, and simulations.

In the second, third- and fourth-year programs, students will build upon previously learned skills and use the target language to explore problem solving, communication with others, literature, and culture. Service in the community can be included in these courses.

You must pass 1st semester to continue to the next level at semester or get teacher permission to continue.

1st Year	American Sign Language (ASL) 1/2	Spanish 1/2	For Heritage Speakers: Spanish 5/6 or Spanish Native Speaker
2nd Year	American Sign Language (ASL) 3/4	Spanish 3/4	Spanish Native Speaker
3rd Year		Spanish 5/6	
4th Year			

American Sign Language 1 & 2

Grade: 9, 10, 11, 12 **Course ID#:** WRL111/112

Credit: Full Year (1.0)

Dual Credit: Yes – CTE Dual Credit

Graduation Requirement: CTE or World Language

Prerequisites: None

American Sign Language 1 and 2 is a competency-based course of study. This class prepares students for facilitating communication between Deaf and hearing people using American Sign Language (ASL). The class offers you highly specialized and technical training in the field of Deaf Studies. Students learn basic communication components of ASL, become familiar with Deaf culture, and welcome you as part of the Deaf community. Students who earn a grade of 'B' (3.0) or better in this course can earn college credit. *This course may fulfill a Career & Technical Education (CTE), World Language, or an Elective credit.*

American Sign Language 3 & 4

Grade: 10, 11, 12 **Course ID#:** WRL113/114

Credit: Full Year (1.0)

Dual Credit: No

Graduation Requirement: CTE or World Language

Prerequisites: American Sign Language 1 & 2

American Sign Language 3 and 4 is a competency-based course of study. It offers you highly specialized and technical training in the field of Interpreting. Students are given instruction as a whole group and then work towards mastery of those competencies listed in the state standards. This class prepares students for facilitating communication between deaf and hearing people using American Sign Language (ASL). All projects are signed LIVE in class in front of your peers. Students learn the functional components of ASL as well as becoming familiar with Deaf Culture and the community. *This course may fulfill a Career & Technical Education (CTE), World Language, or an Elective credit.*

Spanish Courses

In the Spanish program, students who speak Spanish at home or have any degree of fluency and who are interested in improving their language skills should speak with a Spanish teacher or counselor for recommendations before enrolling. No English is spoken in the Spanish program. We do not use desks but are constantly interacting and participating.

Spanish 1 & 2

Grade: 9, 10, 11, 12 **Course ID#:** WRL101/102 **Credit:** Full Year (1.0) **Dual Credit:** No

Graduation Requirement: World Language

Prerequisites: None

The Spanish program is a participation-based, Spanish-only environment. Students do not use English in class. Students will demonstrate essential language skills needed to meet their basic needs and to communicate in real life situations through reading, writing, speaking and listening. Students will develop an understanding of the various cultures of Spanish-speaking people. Students will learn through a variety of instructional strategies such as listening, modeling, group work, games and simulations. We do not sit at desks. Speaking and participation are emphasized. Students who speak Spanish at home should **not** sign up for this class.

Spanish 3 & 4

Grade: 10, 11, 12 **Course ID#:** WRL103/104 **Credit:** Full Year (1.0) **Dual Credit:** No

Graduation Requirement: World Language

Prerequisites: Spanish 1 & 2

In the 2nd-year of the Spanish program, students will demonstrate essential language skills needed to meet their basic needs and to communicate in real life situations through reading, writing, speaking and listening. Students will develop an understanding of the various cultures of Spanish-speaking people. Students will learn through a variety of instructional strategies such as listening, modeling, group work, games and simulations. We do not sit at desks. Speaking and participation are emphasized.

Spanish 5 & 6

Grade: 11, 12 **Course ID#:** WRL105/106 **Credit:** Full Year (1.0) **Dual Credit:** No

Graduation Requirement: World Language

Prerequisites: Successful completion (B or better) in Spanish 3 & 4 or teacher permission.

In the 3rd-year of the Spanish program, students will elaborate on their essential language skills needed to meet their basic needs and to communicate in real life situations through reading, writing, speaking and listening. Students will develop an understanding of the various cultures of Spanish-speaking people. Students will learn through a variety of instructional strategies such as listening, modeling, group work, games and simulations.

Spanish Native Speaker 1 & 2

Grade: 9, 10, 11, 12 **Course ID#:** WRL201/202 **Credit:** Full Year (1.0) **Dual Credit:** No

Graduation Requirement: World Language

Prerequisites: None

A heritage speaker is someone whose first language is Spanish. This class will help you further develop the reading and writing skills in Spanish while learning more about the Spanish-speaking culture. We will be reading and analyzing works of Spanish authors. One of the main goals in this class is to improve your Spanish writing skills.

AP Spanish Language 1 & 2

Grade: 11, 12 **Course ID#:** WRL231/232 **Credit:** Full Year (1.0) **Dual Credit:** No

Graduation Requirement: World Language

Prerequisites: Successful completion (B or Better) of Spanish 5 & 6, Spanish Native Speaker 1 & 2 or **teacher permission**.

In AP Spanish, student's complete college-level work as they prepare to take the AP Exam in May. Spanish is the only language spoken in class. Students continue to refine skills and knowledge needed to communicate fluently in reading, writing, speaking, and listening. In addition to taking practice exams, students will build fluency through interacting with numerous authentic sources, including short stories, poetry, history, encyclopedic entries, news articles, and radio broadcasts. Class members produce written or spoken samples representative of their abilities on a regular basis. There are daily notes and homework. **Students will be required to take the AP examination. Failure to take the exam will result in failing grade.**

Career & Technical Education

Agriculture, Food and Natural Resources

Eco System Design 1 & 2

Grade: 9, 10, 11, 12 **Course ID#:** SCI621/622 **Credit:** Full Year (2.0) **Dual Credit:** No

Graduation Requirement: CTE and Science (*Biology or Lab Science*)

Prerequisites: None

Eco System Design studies environmental science and ecosystems through agricultural, using the FPSD Farm as a living laboratory. The course is designed as a hands-on course that digs into systems thinking, biology, and ecology concepts while learning practical skills of growing food, business, and leadership skills. Students will have access to state-of-the-art tools and resources on the Franklin Pierce Farm site and learn how to design sustainable systems by growing food from seed to harvest. This class is lab and activity heavy and is held outside on the farm. *This course may fulfill a Career & Technical Education (CTE), Science, or an Elective credit.*

Arts, Audio/Video Technology & Communications

AP Studio Arts

Grade: 10, 11, 12 **Course ID#:** FNA131/132 **Credit:** Full Year (1.0) **Dual Credit:** Yes – CTE Dual Credit

Graduation Requirement: CTE and Arts

Prerequisites: *Teacher Permission Required*

The Advanced Placement Studio Art course provides students with a learning experience equivalent to that of an introductory college course in studio art foundation. In this course students will focus on career exploration in the fields of Design and Professional Production Arts. This course focuses on the theories, methods and techniques and must include the areas of glass, metal, ceramic, wood, polymers, and mixed media. Includes instruction in core art EALRs, design, concepts sketching, technical drawing, and color theory. Students will create a portfolio of work in at least one of three areas of study: Drawing, 2-D Design, or 3-D design. This body of work can be used to meet college admission portfolio requirements and will be assessed by the College Board for Advanced Placement, in lieu of an examination. *This course may fulfill a Career & Technical Education (CTE), Art, or an Elective credit.* Students will be **required** to take the AP examination (refer to [page 7](#) for more information).

Graphic Design

Grade: 9, 10, 11, 12 **Course ID#:** ATC321 **Credit:** Semester (0.5) **Dual Credit:** Yes – CTE Dual Credit

Graduation Requirement: CTE and Arts

Prerequisites: None

Unleash your creativity in this dual credit course that will develop your digital artwork skills. Using Adobe Photoshop, Illustrator and InDesign students will create works of art that are meaningful and personal. Learn the principles of design and art elements while gaining skills that make you employable. Students are exposed to the entire creative process from concept sketches to layout requirements for printing. Students who earn a grade of 'C' (2.0) or better in this course can earn college credit. *This course may fulfill a Career & Technical Education (CTE), Art, or an Elective credit.*

Glass Art Beginning

Grade: 9, 10, 11, 12 **Course ID#:** FNA113 **Credit:** Semester (0.5) **Dual Credit:** No

Graduation Requirement: CTE and Arts

Prerequisites: None

This course prepares students to apply knowledge and technical skills in creating, producing, and selling products in the fields of glass and mixed media. Instruction includes art theory, design, safety, technical skills, production skills and marketing, sales, entrepreneurship, and management functions associated with operating a small business in professional arts. *This course may fulfill a Career & Technical Education (CTE), Art, or an Elective credit.*

Glass Art Advanced

Grade: 10, 11, 12

Course ID#: FNA114

Credit: Semester

Dual Credit: No

Graduation Requirement: CTE and Arts

Prerequisites: *Glass Art Beginning or teacher permission*

In this course the student will continue to develop personal expression through glass art. Students design their own artworks, determining the best media and techniques to communicate their ideas to further develop their artistic style expanding their glass art portfolio. Instruction includes project planning, art analyses, and critiques. *This course may fulfill a Career & Technical Education (CTE), Art, or an Elective credit.*

Pottery

Grade: 9, 10, 11, 12

Course ID#: FNA117

Credit: Semester

Dual Credit: No

Graduation Requirement: CTE and Arts

Prerequisites: None

This course teaches the fundamentals of Pottery. Students learn pottery and sculpture using hand building techniques. Some wheel throwing techniques are explored. Students learn finishing techniques in firing and glazing. Artistic style and ideas are developed while applying the elements of art and principles and design. Historical and contemporary pottery/ceramics are studied as students build their skills, understanding and practice their visual literacy. *This course may fulfill a Career & Technical Education (CTE), Art, or an Elective credit.*

Digital Photography Beginning

Grade: 9, 10, 11, 12

Course ID#: ATC301

Credit: Semester

Dual Credit: Yes – CTE Dual Credit

Graduation Requirement: CTE and Arts

Prerequisites: None

This course will focus on career exploration in the fields of photography. The course will include basic theories, methods and techniques used to plan, produce, and distribute photos. Includes instruction in lighting, camera options, composition, production preparation, and related computer applications. Students who earn a grade of 'C' (2.0) or better in this course can earn college credit. *This course may fulfill a Career & Technical Education (CTE), Art, or an Elective credit.*

Video Editing 1 & 2

Grade: 9, 10, 11, 12

Course ID#: ATC211/212

Credit: Full Year (1.0)

Dual Credit: Yes – CTE Dual Credit

Graduation Requirement: CTE and Arts

Prerequisites: None

This is a performance-based class for those interested in the television, film, or video production industries. Coursework includes practical experience shooting and editing videos. You will produce a final project for the film festival. Students who earn a grade of 'C' (2.0) or better in this course can earn college credit. *This course may fulfill a Career & Technical Education (CTE), Art, or an Elective credit.*

Yearbook 1 & 2

Grade: 10, 11, 12

Course ID#: ATC401/402

Credit: Full Year (1.0)

Dual Credit: Yes – CTE Dual Credit

Graduation Requirement: CTE and Arts

Prerequisites: Digital Photography, Graphic Design or teacher permission

In this course you will have the opportunity to develop a creative theme and design the schools' yearbook. Students will apply technical knowledge and skills to the layout, design and publication. All phases of publication including copy writing, layout, and photography are covered by applying sophisticated computer technology to contemporary design. Students will be required to work outside of class time to meet publishing deadlines. Students who earn a grade of 'C' (2.0) or better in this course can earn college credit. *This course may fulfill a Career & Technical Education (CTE), Art, or an Elective credit.*

Business, Management & Administration

Business Management / Entrepreneurship 1 & 2

Grade: 9, 10, 11, 12 **Course ID#:** BUS111/112 **Credit:** Full Year (1.0) **Dual Credit:** Yes – CTE Dual Credit

Graduation Requirement: CTE

Prerequisites: None

This course prepares individuals to develop and manage independent small businesses. Includes instruction in business administration; enterprise planning and entrepreneurship; start-up; small business operations and problems; personnel supervision; capitalization and investment; taxation; business law and regulations; e-commerce; home business operations; and applications to specific sectors, products, and services. Students who earn a grade of 'C' (2.0) or better in this course can earn college credit. *This course may fulfill a Career & Technical Education (CTE) or an Elective credit.*

Finance

Financial Literacy 1 & 2

Grade: 9, 10, 11, 12 **Course ID#:** BUS211/212 **Credit:** Full Year (1.0) **Dual Credit:** Yes – CTE Dual Credit

Graduation Requirement: CTE and Mathematics (3rd Year)

Prerequisites: None

Are you constantly running out of money and finding it difficult to pay for the movies? This course will teach you financial management skills that will help you make smart financial decisions, now and in the future. Topics include: banking services, consumer credit, budgeting, saving, investing, stocks, insurance, retirement planning, how to buy a car and more. You will learn how to avoid financial mistakes by understanding your options and responsibilities. This class will help you to be financially successful in the real world. Students who earn a grade of 'C' (2.0) or better in this course can earn college credit.

Education & Training

American Sign Language 1 & 2

Grade: 9, 10, 11, 12 **Course ID#:** WRL111/112

Credit: Full Year

Dual Credit: Yes – CTE Dual Credit

Graduation Requirement: CTE or World Language

Prerequisites: None

American Sign Language 1 and 2 is a competency-based course of study. This class prepares students for facilitating communication between Deaf and hearing people using American Sign Language (ASL). The class offers you highly specialized and technical training in the field of Deaf Studies. Students learn basic communication components of ASL, become familiar with Deaf culture, and welcome you as part of the Deaf community. Students who earn a grade of 'B' (3.0) or better in this course can earn college credit. *This course may fulfill a Career & Technical Education (CTE), World Language, or an Elective credit.*

American Sign Language 3 & 4

Grade: 10, 11, 12 **Course ID#:** WRL113/114

Credit: Full Year

Dual Credit: No

Graduation Requirement: CTE or World Language

Prerequisites: American Sign Language 1 & 2.

American Sign Language 3 and 4 is a competency-based course of study. It offers you highly specialized and technical training in the field of Interpreting. Students are given instruction as a whole group and then work towards mastery of those competencies listed in the state standards. This class prepares students for facilitating communication between deaf and hearing people using American Sign Language (ASL). All projects are signed LIVE in class in front of your peers. Students learn the functional components of ASL as well as becoming familiar with Deaf Culture and the community. *This course may fulfill a Career & Technical Education (CTE), World Language, or an Elective credit*

Teaching Academy 1 & 2

Grade: 10, 11, 12 **Course ID#:** CIE311/312

Credit: Full Year (1.0)

Dual Credit: Yes – CTE Dual Credit

Graduation Requirement: CTE

Prerequisites: Recommended Courses - Early Childhood Education.

In this course students learn the knowledge, skills, and practices required for careers in education. The course focuses on the general theory and practice of learning and teaching; the basic principles of educational psychology; the art of teaching; the planning and administration of educational activities; and the social foundations of education. In addition, standards and competencies from the Early Childhood, Education and Services and the Family and Community Services sections of the Family and Consumer Sciences National Standards are attained by students, preparing them for the beginning levels of a variety of human service careers.

Students who earn a grade of 'C' (2.0) or better in this course can earn college credit. *This course may fulfill a Career & Technical Education (CTE) or an Elective credit.*

Health Science

Family Health

Grade: 9, 10, 11, 12 **Course ID#:** HPE111

Credit: Semester (0.5) **Dual Credit:** No

Graduation Requirement: Health

Prerequisites: None

Family Health is designed to prepare students for life-long decision making, problem solving, critical thinking, and management skills related to health and wellness issues impacting families. The primary role is enabling students to assume an active role in developing healthy lifestyles for themselves and others. Integrating the Washington Health and Fitness essential learning's with standards and competencies from the National Standards for Family and Consumer Sciences Education, this course focuses on the interrelationships of healthy choices and a productive, satisfying life.

Principles of Biomedical Science 1 & 2

Grade: 9, 10, 11, 12 **Course ID#:** SCI115/116

Credit: Full Year (1.0)

Dual Credit: Yes – CTE Dual Credit

Graduation Requirement: CTE and Science (Lab Science) or Health & Fitness (Health)

Prerequisites: None

Students investigate the human body systems and various health conditions, including heart disease, diabetes, sickle cell disease, hypercholesterolemia, and infectious diseases. They determine the factors that led to the death of a fictional person and investigate lifestyle choices and medical treatments that might have prolonged the person's life. The activities and projects introduce students to human physiology, medicine, research processes, and bioinformatics. This course is designed to provide an overview of all the courses in the Biomedical Sciences program and lay the scientific foundation for subsequent courses. Students who earn a grade of 'C' (2.0) or better in this course can earn college credit. *This course may fulfill a Career & Technical Education (CTE), Science, Health or an Elective credit.*

Human Body Systems 1 & 2

Grade: 10, 11, 12 **Course ID#:** SCI215/216

Credit: Full Year (1.0)

Dual Credit: Yes – CTE Dual Credit

Graduation Requirement: CTE and Science (Lab Science)

Prerequisites: *Principles of Biomedical Science 1 & 2 or teacher permission.*

Students examine the interactions of body systems as they explore identity, communication, power, movement, protection, and homeostasis. Students design experiments investigate the structures and functions of the human body and use data acquisition software to monitor body functions such as muscle movement, reflex and voluntary action, and respiration. Exploring science in action, students build organs and tissues on a skeletal manikin, work through interesting real-world cases, and play the roles of biomedical professionals to solve medical mysteries. Students who earn a grade of 'C' (2.0) or better in this course can earn college credit. *This course may fulfill a Career & Technical Education (CTE), Science, or an Elective credit.*

Medical Interventions 1 & 2

Grade: 11, 12 **Course ID#:** SCI315/316

Credit: Full Year (1.0)

Dual Credit: Yes – CTE Dual Credit

Graduation Requirement: CTE and Science (Lab Science)

Prerequisites: *Principles of Biomedical Science 1 & 2 and Human Body Systems 1 & 2 or teacher permission.*

Students investigate a variety of interventions involved in the prevention, diagnosis and treatment of disease as they follow the life of a fictitious family. Students learn how to screen and fight infection; screen and evaluate the code in human DNA; prevent, diagnose and treat cancer; and prevail when the organs of the body begin to fail. Through these scenarios, students are exposed to a range of interventions related to immunology, surgery, genetics, pharmacology, medical devices, and diagnostics. Students who earn a grade of 'C' (2.0) or better in this course can earn college credit. *This course may fulfill a Career & Technical Education (CTE), Science, or an Elective credit.*

Biomedical Innovation 1 & 2

Grade: 11, 12 **Course ID#:** SCI415/416 **Credit:** Full Year (1.0) **Dual Credit:** No

Graduation Requirement: CTE and Science (Lab Science)

Prerequisites: *Principles of Biomedical Science 1 & 2, Human Body Systems 1 & 2 and Medical Interventions 1 & 2.*

Biomedical Innovation is the final course of the PLTW Biomedical Science sequence, students build on the knowledge and skills gained from previous courses to design innovative solutions for the most pressing health challenges of the 21st century. Students address topics ranging from public health and biomedical engineering to clinical medicine and physiology. They will have the opportunity to work on an independent design project with a mentor or advisor from a university, medical facility, or research institution. *This course may fulfill a Career & Technical Education (CTE), Science, or an Elective credit.*

Sports Medicine Beginning 1 & 2

Grade: 10, 11, 12 **Course ID#:** MDC111/112 **Credit:** Full Year (1.0) **Dual Credit:** Yes – CTE Dual Credit

Graduation Requirement: CTE

Prerequisites: *None*

This course focuses on an introduction to sports medicine. It covers all aspects of the profession of athletic training. The sports medicine course offers students hands-on training in sports therapy and athletic training. Students will become CPR/First Aid Certified. There is a requirement of 20 hours per semester that will be necessary to achieve the maximum grade for the course's practicum component. Students who earn a grade of 'C' (2.0) or better in this course can earn college credit. *This course may fulfill a Career & Technical Education (CTE), Physical Education, or an Elective credit.*

Sports Medicine Advanced 3 & 4

Grade: 11, 12 **Course ID#:** MDC121/122 **Credit:** Full Year (1.0) **Dual Credit:** Yes – CTE Dual Credit

Graduation Requirement: CTE

Prerequisites: *Sports Medicine Beginning 1 & 2.*

This course focuses on advanced sports medicine concepts and refining athletic training skills. Included is assisting beginning student athletic trainers in lab, presenting sports medicine topics, completing independent projects, managing and running the training room. The sports medicine course offers students hands-on training in sports therapy and athletic training. Students will become CPR/First Aid Certified. There is a requirement of 30 hours per semester that will be necessary to achieve the maximum grade for the course's practicum component. Students who earn a grade of 'C' (2.0) or better in this course can earn college credit. *This course may fulfill a Career & Technical Education (CTE), Physical Education, or an Elective credit.*

Fitness Specialist 1 & 2

Grade: 11, 12 **Course ID#:** HPE211 / 212 **Credit:** Full Year (1.0) **Dual Credit:** Yes – CTE Dual Credit

Graduation Requirement: CTE and Physical Education

Prerequisites: *Successful completion (C or better) in Intro to PE or teacher permission. Human Body Systems 1 & 2 (can be taken concurrently).*

The fitness specialist program is designed to prepare students to work in the fitness industry. Upon completion of this program and graduation students will be able to gain personal fitness trainer certification. This course prepares students for employment in health and fitness clubs, wellness centers, public and private recreation facilities, hospitals and corporate fitness programs. In this class students will apply what they learn in the weight room with student athletes. Students will also receive certification in CPR and First Aid. *This course may fulfill a Career & Technical Education (CTE), Physical Education, or an Elective credit.*

Hospitality & Tourism

Culinary Beginning

Grade: 9, 10, 11, 12 **Course ID#:** FCS111

Credit: Semester (0.5) **Dual Credit:** No

Graduation Requirement: CTE

Prerequisites: None

During this class students will make a study of safety and sanitation, basic culinary skills and knowledge, baked goods, and the food guide pyramid. Students will demonstrate their knowledge through individual and group activities. *This course may fulfill a Career & Technical Education (CTE) or an Elective credit.*

Culinary Advanced

Grade: 10, 11, 12 **Course ID#:** FCS113

Credit: Semester (0.5) **Dual Credit:** Yes – CTE Dual Credit

Graduation Requirement: CTE

Prerequisites: Culinary Beginning and teacher permission.

Students will be trained for career opportunities in the food service/culinary arts industry. Students will have the opportunity to learn and practice safety and sanitation procedures, basic communication skills and customer relations, meal planning, and more advanced food preparation skills. Students who earn a grade of 'C' (2.0) or better in this course can earn college credit. *This course may fulfill a Career & Technical Education (CTE) or an Elective credit.*

Human Services

Early Childhood Education

Grade: 10, 11, 12 **Course ID#:** FCS211

Credit: Semester (0.5) **Dual Credit:** Yes – CTE Dual Credit

Graduation Requirement: CTE

Prerequisites: None

In Early Childhood Education students learn knowledge, skills, and practices required for careers in Early Childhood, Education and Services. The course focuses on the provision and management of childcare services and prepares individuals to plan, design, and manage childcare facilities and programs that meet children's developmental needs and interests and that provide safe and healthy environments. Students who earn a grade of 'C' (2.0) or better in this course can earn college credit. *This course may fulfill a Career & Technical Education (CTE) or an Elective credit*

Information Technology

Technology Exploration 1 & 2

Grade: 9, 10, 11, 12 **Course ID#:** ATC311/312

Credit: Full Year (1.0) **Dual Credit:** Yes – CTE Dual Credit

Graduation Requirement: CTE and Arts

Prerequisites: None

Do you want to work with computers? Do you like taking photos or creating designs? In this class you will learn the basics of digital photography as well as basic design principles using Photoshop and InDesign and computer science skills. You will also learn Microsoft Word and Microsoft PowerPoint 2010 with the opportunity to earn industry certification.

Students who earn a grade of 'C' (2.0) or better in this course can earn college credit.

Introduction to Computer Science 1 & 2

Grade: 9, 10, 11, 12 **Course ID#:** TEC113/114

Credit: Full Year (1.0) **Dual Credit:** Yes – CTE Dual Credit

Graduation Requirement: CTE and Mathematics (3rd Year)

Prerequisites: None

Introduction to Computer Science will cover the foundations of computer science and basic programming, with an emphasis on helping students develop logical thinking and problem-solving skills. At a time when computer science affects how we work and live, Computer Science empowers students grades 9-12 to become creators, instead of merely consumers. Students who earn a grade of 'C' (2.0) or better in this course can earn college credit. *This course may fulfill a Career & Technical Education (CTE), Mathematics, or an Elective credit.*

AP Computer Science 1 & 2

Grade: 10, 11, 12 **Course ID#:** TEC113/114 **Credit:** Full Year (1.0) **Dual Credit:** Yes – CTE Dual Credit

Graduation Requirement: CTE and Mathematics (3rd Year)

Prerequisites: Exploring Computer Science or teacher permission.

AP Computer Science A is both a college-prep course for potential computer science majors and a foundation course for students planning to study in other technical fields such as engineering, physics, chemistry, and geology. The course emphasizes programming methodology, procedural abstraction, and in-depth study of algorithms, data structures, and data abstractions, as well as a detailed examination of a large case study program. Instruction includes preparation for the AP Computer Science Exam. This course may fulfill a Career & Technical Education (CTE), Mathematics, or an Elective credit.

Manufacturing

Aerospace Manufacturing 1 & 2

Grade: 10, 11, 12 **Course ID#:** TEC213/214 **Credit:** Full Year (1.0) **Dual Credit:** Yes – CTE Dual Credit

Graduation Requirement: CTE and Mathematics (3rd Year)

Prerequisites: None

This course is a hands-on course that will provide an overview of mechanical behavior and characteristics of aerospace materials including metal alloys, polymers, ceramics and composites. Students will receive hands-on experience in machining, testing and assessing the properties and performance of aerospace materials. Students will apply the skills learned by designing and making various projects. Seniors who complete this course and earn an industry recognized certificate will have an opportunity to interview with local companies. Students who earn a grade of 'C' (2.0) or better in this course can earn college credit.

Aerospace Manufacturing Advanced 3 & 4

Grade: 11, 12 **Course ID#:** TEC313/314 **Credit:** Full Year (1.0) **Dual Credit:** Yes – CTE Dual Credit

Graduation Requirement: CTE and Mathematics (3rd Year)

Prerequisites: Aerospace Manufacturing 1 & 2

Advanced Machining will provide students with advance manufacturing skills in both composites and metals. It will focus on mechanical behavior and character of aerospace materials including metal alloys, polymers, ceramics, and composites. Students will also be introduced to principles of metallurgy and welding. Advance students will have to the opportunity to apply their skills by building self-selected projects. Seniors who complete this course and earn an industry recognized certificate will have an opportunity to interview with local companies. Students who earn a grade of 'C' (2.0) or better in this course can earn college credit.

STEM

Introduction to Engineering Design 1 & 2

Grade: 9, 10, 11, 12 **Course ID#:** TEC111/112 **Credit:** Full Year (1.0) **Dual Credit:** Yes – CTE Dual Credit

Graduation Requirement: CTE and Mathematics (3rd Year)

Prerequisites: None

Students will explore the engineering design process, applying math, science, and engineering standards to hands-on projects. Students will work both individually and in teams to design solutions to a variety of problems using 3-D modeling software, and apply their skills utilizing 3-D printers and laser engravers. This course is the first in the Project Lead the Way sequence for engineering. Students who earn a grade of 'C' (2.0) or better in this course can earn college credit.

Robotics Technology

Grade: 9, 10, 11, 12 **Course ID#:** TEC115 **Credit:** Semester (0.5) **Dual Credit:** No

Graduation Requirement: CTE

Prerequisites: None

Robotics Technology uses Spheros, LEGO EV3s, and Drone Technology to learn concepts of logic, design and computational thinking. Students will be exposed to various robotics engineering including mechanical, software, electrical, computer science, and system design engineering. Students will have the opportunity to apply principles learned and build robots for competition and industrial application. In addition, students will have the opportunity to compete in an international FIRST Tech Challenge. This class may be repeated for credit. *This course may fulfill a Career & Technical Education (CTE) or an Elective credit.*

Sample Student Schedules

The next two pages include sample student schedules based off student's Es. These are not all inclusive but are examples of what students could choose to align with their post-secondary E choice.

Sample Schedule - Enrollment

	9 th		10 th		11 th		12 th	
Math	Algebra 1	Algebra 2	Geometry 1	Geometry 2	Algebra 3	Algebra 4	Pre-Calc	Pre-Calc
Science	Adv Physical Science	Adv Physical Science	AP Bio/AP Env Science	AP Bio/AP Env Science	Adv Chem	Adv Chem	AP Chem/AP Physics	AP Chem/AP Physics
English	9 th grade LA	9 th grade LA	10 th grade LA Honors	10 th grade LA Honors	AP Lit	AP Lit	AP LA	AP LA
Social Studies			AP World History	AP World History	AP US History	AP US History	AP Gov	AP Gov
PE/Health	Intro	Health	Team Sports	Weight Training				
CTE	Technology Exploration (2 for 1)	Technology Exploration (2 for 1)						
Art	Technology Exploration (2 for 1)	Technology Exploration (2 for 1)			Glass Art Beg	Glass Art Adv		
World Language	Spanish 1	Spanish 2	Spanish 3	Spanish 4	Spanish 5	Spanish 6		
Additional Courses							Financial Literacy	Financial Literacy
Additional Courses							AP Psych	AP Psych

Sample Schedule - Enlist

	9 th		10 th		11 th		12 th	
Math	Algebra 1	Algebra 2	Geometry 1	Geometry 2	Algebra 3	Algebra 4	Financial Literacy	Financial Literacy
Science	Biology	Biology	Physical Science	Physical Science	Chemistry/Forensic Science	Chemistry/Forensic Science		
English	9 th grade LA	9 th grade LA	10 th grade LA	10 th grade LA	11 th grade LA	11 th grade LA	12 th grade LA	12 th grade LA
Social Studies			World History	World History	US History	US History	Civics	Ethnic Studies/CWP
PE/ Health	Intro	Health	Indiv./dual Sports	Walking Fitness			Fitness Specialist	Fitness Specialist
CTE	Technology Exploration (2 for 1)	Technology Exploration (2 for 1)					Business Mgmt	Business Mgmt
Art	Technology Exploration (2 for 1)	Technology Exploration (2 for 1)			Pottery	World Music		
World Language	Spanish 1	Spanish 2	Spanish 3	Spanish 4				
Additional Courses					Leadership	Leadership	Sociology	Culinary Arts
Additional Courses								

Sample Schedule - Employed

	9 th		10 th		11 th		12 th	
Math	Algebra 1	Algebra 2	Geometry 1	Geometry 2	Algebra 3	Algebra 4	Financial Literacy	Financial Literacy
Science	Biology	Biology	Physical Science	Physical Science	Chemistry/Forensic Science	Chemistry/Forensic Science		
English	9 th grade LA	9 th grade LA	10 th grade LA	10 th grade LA	11 th grade LA	11 th grade LA	12 th grade LA	12 th grade LA
Social Studies			World History	World History	US History	US History	Civics	Ethnic Studies/CWP
PE/ Health	Intro	Health	Indiv./dual Sports	Walking Fitness				
CTE	Technology Exploration (2 for 1)	Technology Exploration (2 for 1)			Intro to Computer Science	Intro to Computer Science	Business Mgmt	Business Mgmt
Art	Technology Exploration (2 for 1)	Technology Exploration (2 for 1)			Pottery	World Music		
World Language	Spanish 1	Spanish 2	Spanish 3	Spanish 4				
Additional Courses							Sociology	Culinary Arts
Additional Courses							Leadership	Leadership



The Pierce County Skills Center offers yearlong Career and Technical Education programs designed to give students an in-depth look into specific career fields. PCSC courses are taught by industry professionals in state-of-the-art facilities. PCSC programs earn high school and college credit and prepare students to successfully transition to post-secondary education and the workforce.

- Students attend their home high school for ½ day and PCSC for the other ½ day
- PCSC serves high school juniors and seniors
- Programs are tuition free, but may have program/testing fees
- Transportation is provided to and from each high school
- Students may earn up to 1.5 high school credits per trimester (total of 4.5 credits per year)
- Session Times: AM Session – 7:55am-10:25am, PM Session – 11:15am-1:45pm

Students interested in attending PCSC should meet with their counselor to review credit status and complete a PCSC application. Applications for the 2020-201 school year will be accepted beginning March 2, 2020.

2020-21 Program Descriptions

Aerospace Composites

The Aerospace Composites program is designed to prepare students to fabricate, assemble and repair composite materials. Students design, build and repair composite parts and assemblies using the same techniques as our industry partners. Students also earn a locally-developed manufacturing certificate.

Aerospace Machining & Fabrication

The Aerospace Machining/Fabrication program is designed to teach hands-on skills, processes, and technologies used in the aerospace and manufacturing industry. Students will learn technical sketching, precision measurement, computer-aided design/programming, fabrication/assembly, welding, and computer-aided manufacturing.

Automotive Technology

The Automotive Technology program is designed to train students for a variety of jobs within the automotive industry. Students will focus on maintenance and light repair in an environment set up just like an automotive service department. Students will service and diagnose vehicles, complete tune-ups, conduct brake and suspension repairs, and perform wheel alignments.

Construction Trades

The Construction Trades program is a State of Washington approved pre-apprenticeship program designed to prepare students for direct entry into an apprenticeship by meeting rigorous academic and industry standards. This course covers both residential and commercial construction with an emphasis on job site safety through hands-on projects, guest speakers and field trips. Students will learn framing, roofing, blueprint reading, estimating costs, and site preparation. Students who meet ALL course competencies with a B or better will be granted preferred enrollment and advanced placement in the Carpenters-Employers Apprenticeship & Training Trust Fund.

Cosmetology

The Cosmetology program is designed to train students in haircutting, current styling trends, hair coloring, and safety and sanitation in a hair salon setting. Students will begin the program in July before their senior year through the next August after graduation and will earn the 1,400 hours (5 quarters) of instruction required to take the state licensing examination. Students may also attend Clover Park Technical College for two additional quarters to earn an Associate's Degree. Students must be prepared to attend class in the evenings and must provide their own transportation.

Criminal Justice

The Criminal Justice program is designed to prepare students with preliminary training for careers in law enforcement. Upon completion of this program, students will have a working knowledge of criminal law, policing procedures, forensics, and their application to the various divisions of the criminal justice system. **Program Requirement:** Must be able to pass a criminal background check.

Culinary Arts

The Culinary Arts program is designed to prepare students for a promising career in the food service or hospitality industry. Students will learn kitchen procedures, sanitation and safety; menu planning and costing, dining room service, baking/food preparation, and banquet and catering service taught by industry professionals in a state-of-the-art facility. Students will also assist in the operation of our on-site café, *The Glacier Grill*.

DigiPen Video Game Development

The DigiPen Video Game Development program is designed to teach students to create video games using trigonometry and higher math, computer programming in C#, as well as 2D and 3D animation. This course will prepare students with the skills necessary for video game industry's need for qualified video game programmers and artists.

Fire Science & Emergency Services

The Fire Science & Emergency Services program is designed to prepare students for a career as a firefighter and other emergency services careers such as, EMT, fire investigator, and building investigator. Students will learn the academic requirements associated with being a firefighter including wildland firefighting. Students will use industry firefighting equipment such as hoses, turnout gear, SCBAs, and a working fire engine.

Medical Careers

The Medical Careers program is designed to prepare students for initial certification as a Nursing Assistant (NA-C) as well as continued training in nursing. Students spend time in the classroom and in an assisted living facility learning many procedures for patient care including: taking blood pressure, temperatures, pulse and respirations, as well as learning how to bathe, groom, feed, lift, exercise, and position patients. Transportation is required for clinicals.

PC Networking & Hardware Repair

The PC Networking & Hardware Repair program is designed to provide students with a broad understanding of the installation, troubleshooting and management of computers, hardware, and computer networks in alignment to industry standards. Students will also learn cybersecurity fundamentals and automation for factories using Programmable Logic Controllers (PLC's).

Pre-Pharmacy Technology

The Pre-Pharmacy Technology program introduces students to the skills needed for entry-level positions in retail, hospital or mail-order pharmacies. Students will learn how to process prescriptions, prepare IV medications, order and stock medications, as well as operate and troubleshoot automated drug dispensing systems. Students will also learn about disease, medication therapy, anatomy & physiology and medical terminology. This program will provide a foundation for students who want to pursue a career as a pharmacy technician or pharmacist.

Pre-Physical Therapy & Sports Medicine

The Pre-Physical Therapy & Sports Medicine program is designed to provide students with a hands-on experience in evaluation, acute care and rehabilitation skills. This program will also teach students about Kinesiology (the study of human movement), human anatomy and physiology, ethics, and taping procedures. This course is a first stop for students interested in becoming a certified athletic trainer, strength and conditioning coach, physical therapy assistant or physical therapist.

Pre-Veterinary Technology

The Pre-Veterinary Technology program is designed to prepare students for a career in animal healthcare and provides a foundation for employment in fields such as veterinary medicine, agriculture, research, fish and wildlife as well as training in grooming services. Students will gain experience through classroom activities and daily handling of resident animals in a realistic setting that models worksites in the industry.