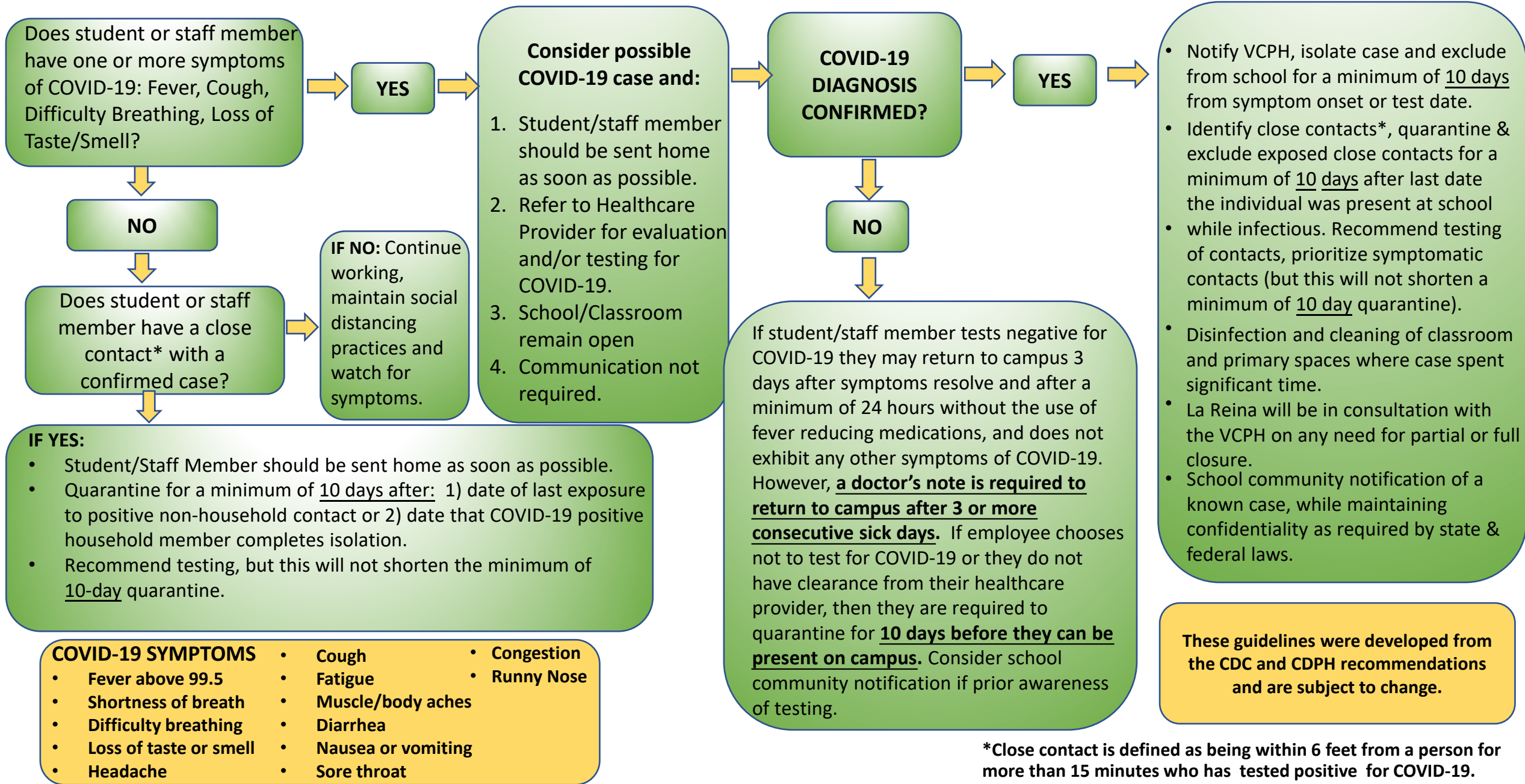


LA REINA HIGH SCHOOL & MIDDLE SCHOOL DECISIONS & NOTIFICATIONS FOR COVID-19



Does student or staff member have one or more symptoms of COVID-19: Fever, Cough, Difficulty Breathing, Loss of Taste/Smell?

YES

- Consider possible COVID-19 case and:**
1. Student/staff member should be sent home as soon as possible.
 2. Refer to Healthcare Provider for evaluation and/or testing for COVID-19.
 3. School/Classroom remain open
 4. Communication not required.

COVID-19 DIAGNOSIS CONFIRMED?

YES

- Notify VCPH, isolate case and exclude from school for a minimum of 10 days from symptom onset or test date.
- Identify close contacts*, quarantine & exclude exposed close contacts for a minimum of 10 days after last date the individual was present at school while infectious. Recommend testing of contacts, prioritize symptomatic contacts (but this will not shorten a minimum of 10 day quarantine).
- Disinfection and cleaning of classroom and primary spaces where case spent significant time.
- La Reina will be in consultation with the VCPH on any need for partial or full closure.
- School community notification of a known case, while maintaining confidentiality as required by state & federal laws.

NO

Does student or staff member have a close contact* with a confirmed case?

IF NO: Continue working, maintain social distancing practices and watch for symptoms.

NO

If student/staff member tests negative for COVID-19 they may return to campus 3 days after symptoms resolve and after a minimum of 24 hours without the use of fever reducing medications, and does not exhibit any other symptoms of COVID-19. However, **a doctor's note is required to return to campus after 3 or more consecutive sick days.** If employee chooses not to test for COVID-19 or they do not have clearance from their healthcare provider, then they are required to quarantine for **10 days before they can be present on campus.** Consider school community notification if prior awareness of testing.

- IF YES:**
- Student/Staff Member should be sent home as soon as possible.
 - Quarantine for a minimum of 10 days after: 1) date of last exposure to positive non-household contact or 2) date that COVID-19 positive household member completes isolation.
 - Recommend testing, but this will not shorten the minimum of 10-day quarantine.

- COVID-19 SYMPTOMS**
- Fever above 99.5
 - Shortness of breath
 - Difficulty breathing
 - Loss of taste or smell
 - Headache
 - Cough
 - Fatigue
 - Muscle/body aches
 - Diarrhea
 - Nausea or vomiting
 - Sore throat
 - Congestion
 - Runny Nose

These guidelines were developed from the CDC and CDPH recommendations and are subject to change.

*Close contact is defined as being within 6 feet from a person for more than 15 minutes who has tested positive for COVID-19.