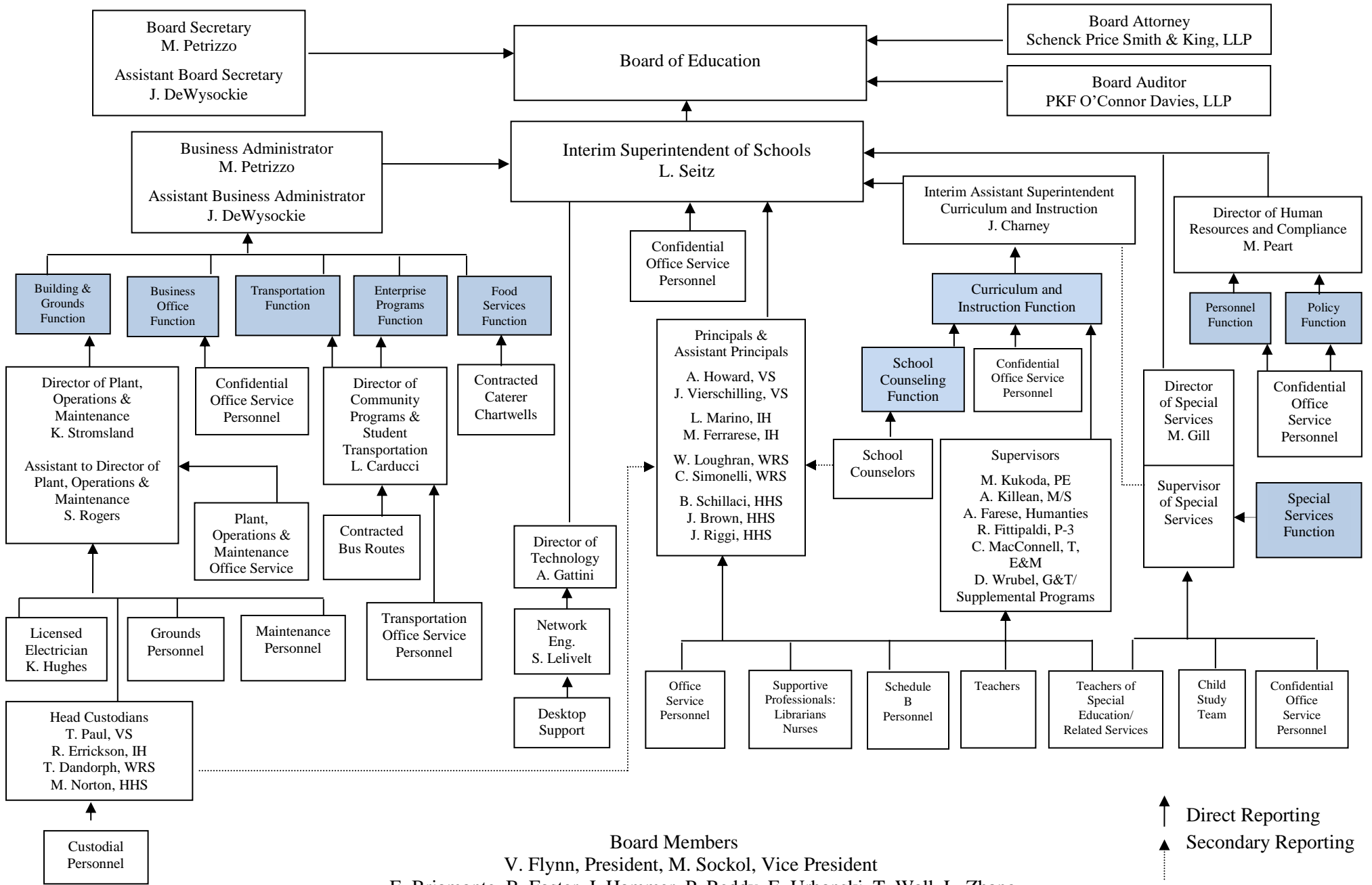


HOLMDEL TOWNSHIP BOARD OF EDUCATION ORGANIZATIONAL CHART



↑ Direct Reporting
 ▲ Secondary Reporting
 Dotted Reporting

Board Members
 V. Flynn, President, M. Sockol, Vice President
 E. Briamonte, B. Foster, J. Hammer, P. Reddy, E. Urbanski, T. Wall, L. Zhang